

Data Path : Z:\voasrv\HPCHEM1\MSVOA_X\Data\VX021924\
 Data File : VX040328.D
 Acq On : 19 Feb 2024 14:18
 Operator : JC/MD
 Sample : P1395-01
 Misc : 4.42g/5.0mL/100uL/5.0mL/MSVOA_X/MEOH
 ALS Vial : 12 Sample Multiplier: 1

Instrument :
 MSVOA_X
 ClientSampleId :
 B-4(4-6)

Quant Time: Feb 20 01:14:47 2024
 Quant Method : Z:\voasrv\HPCHEM1\MSVOA_X\Method\82X020924W.M
 Quant Title : SW846 8260
 QLast Update : Mon Feb 12 00:21:14 2024
 Response via : Initial Calibration

Compound	R.T.	QIon	Response	Conc	Units	Dev(Min)
Internal Standards						
1) Pentafluorobenzene	5.544	168	94265	50.000	ug/l	0.00
34) 1,4-Difluorobenzene	6.757	114	163853	50.000	ug/l	0.00
63) Chlorobenzene-d5	10.055	117	148710	50.000	ug/l	0.00
72) 1,4-Dichlorobenzene-d4	12.024	152	78873	50.000	ug/l	0.00
System Monitoring Compounds						
33) 1,2-Dichloroethane-d4	5.952	65	66446	47.381	ug/l	0.00
Spiked Amount	50.000	Range	78 - 117	Recovery	=	94.760%
35) Dibromofluoromethane	5.385	113	50595	44.216	ug/l	0.00
Spiked Amount	50.000	Range	75 - 124	Recovery	=	88.440%
50) Toluene-d8	8.647	98	201013	46.962	ug/l	0.00
Spiked Amount	50.000	Range	92 - 112	Recovery	=	93.920%
62) 4-Bromofluorobenzene	11.079	95	74573	42.718	ug/l	0.00
Spiked Amount	50.000	Range	83 - 123	Recovery	=	85.440%
Target Compounds						
						Qvalue
4) Vinyl Chloride	1.624	62	327	0.282	ug/l #	43
5) Bromomethane	1.611	94	337	0.515	ug/l #	3
10) Methyl Iodide	2.440	142	326	0.294	ug/l #	52
11) Tert butyl alcohol	2.946	59	93	0.340	ug/l #	78
16) Acetone	2.416	43	829	1.439	ug/l	98
18) Methyl Acetate	2.721	43	1468	0.951	ug/l	96
20) Methylene Chloride	2.782	84	1259	Below Cal	#	78
21) trans-1,2-Dichloroethene	3.081	96	1312	1.197	ug/l	90
27) cis-1,2-Dichloroethene	4.483	96	10598	8.476	ug/l	87
31) Cyclohexane	5.544	56	2613	1.562	ug/l #	31
36) 1,1-Dichloropropene	5.550	75	8407	5.245	ug/l #	49
38) Carbon Tetrachloride	5.544	117	10156	6.664	ug/l #	14
39) Methylcyclohexane	7.373	83	3484	1.870	ug/l	98
40) Benzene	6.025	78	2747	0.613	ug/l #	89
43) Isopropyl Acetate	6.604	43	2123	0.763	ug/l #	62
44) Trichloroethene	7.116	130	489	0.395	ug/l	93
48) Methyl methacrylate	7.659	41	329	0.231	ug/l #	73
52) Toluene	8.714	92	27017	9.202	ug/l	93
53) t-1,3-Dichloropropene	8.903	75	420	2.161	ug/l #	43
55) 1,1,2-Trichloroethane	9.098	97	501	0.400	ug/l #	17
59) 2-Hexanone	9.378	43	693	0.460	ug/l #	26
65) Chlorobenzene	10.079	112	3076	0.991	ug/l	96
67) Ethyl Benzene	10.195	91	645441	116.768	ug/l	99
68) m/p-Xylenes	10.299	106	36246	17.362	ug/l	95
69) o-Xylene	10.640	106	15016	7.402	ug/l	95
70) Styrene	10.652	104	1960	0.581	ug/l #	1
73) Isopropylbenzene	10.963	105	3864	0.696	ug/l	99
76) 1,2,3-Trichloropropane	11.079	75	40020	25.056	ug/l #	39
78) n-propylbenzene	11.305	91	13199	1.962	ug/l	98
79) 2-Chlorotoluene	11.378	91	7043	1.734	ug/l #	43
80) 1,3,5-Trimethylbenzene	11.451	105	23144	4.949	ug/l	95
81) trans-1,4-Dichloro-2-b...	11.079	75	40020	68.915	ug/l #	5
82) 4-Chlorotoluene	11.451	91	2900	0.603	ug/l #	53
83) tert-Butylbenzene	11.713	119	1332	0.290	ug/l	94
84) 1,2,4-Trimethylbenzene	11.750	105	70125	14.821	ug/l	98
85) sec-Butylbenzene	11.890	105	2825	0.479	ug/l	95

Data Path : Z:\voasrv\HPCHEM1\MSVOA_X\Data\VX021924\
 Data File : VX040328.D
 Acq On : 19 Feb 2024 14:18
 Operator : JC/MD
 Sample : P1395-01
 Misc : 4.42g/5.0mL/100uL/5.0mL/MSVOA_X/MEOH
 ALS Vial : 12 Sample Multiplier: 1

Instrument :
 MSVOA_X
 ClientSampleId :
 B-4(4-6)

Quant Time: Feb 20 01:14:47 2024
 Quant Method : Z:\voasrv\HPCHEM1\MSVOA_X\Method\82X020924W.M
 Quant Title : SW846 8260
 QLast Update : Mon Feb 12 00:21:14 2024
 Response via : Initial Calibration

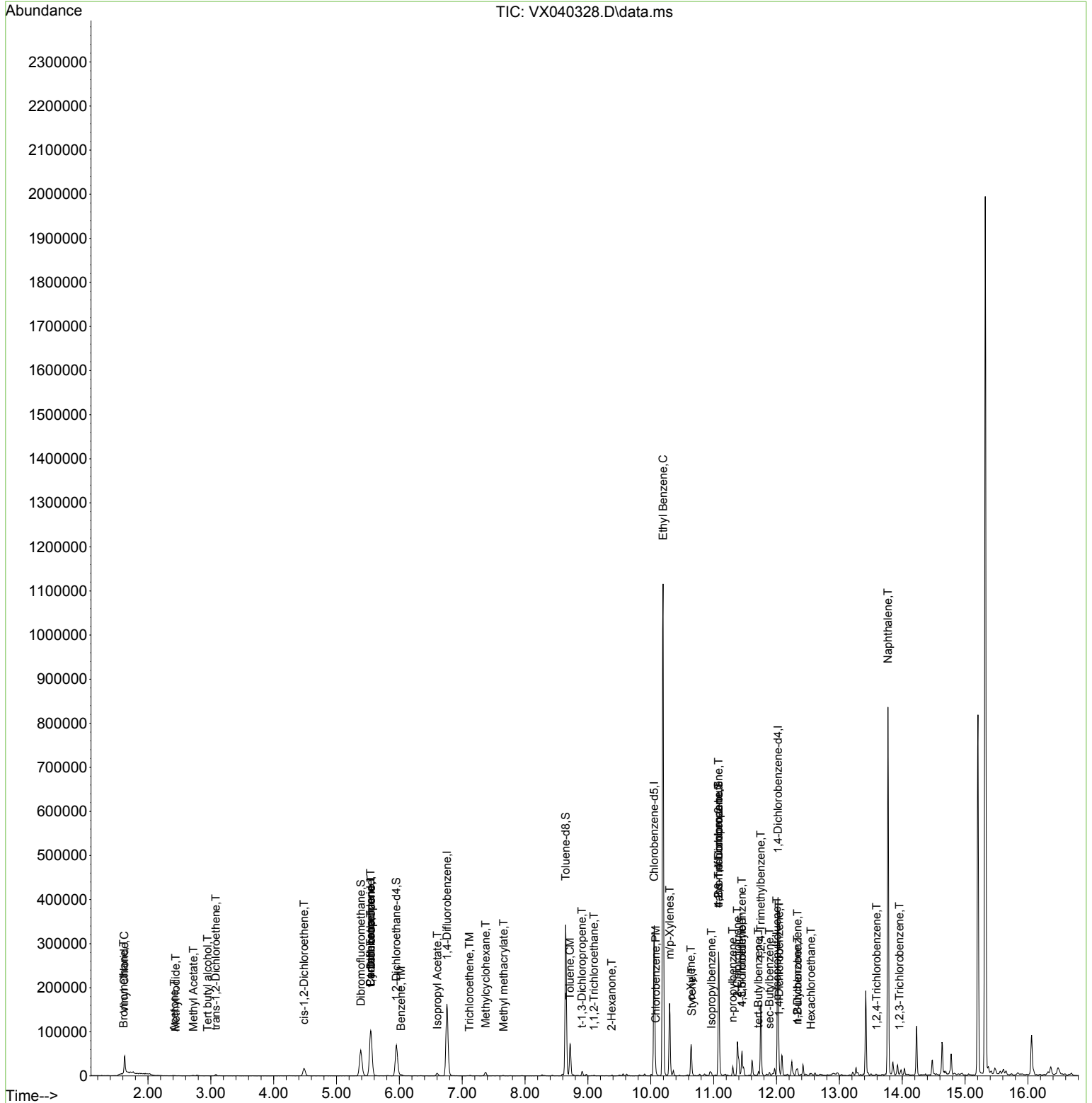
Compound	R.T.	QIon	Response	Conc	Units	Dev(Min)
86) p-Isopropyltoluene	12.006	119	4753	0.984	ug/l #	83
88) 1,4-Dichlorobenzene	12.042	146	3746	1.361	ug/l #	81
89) n-Butylbenzene	12.335	91	4257	0.913	ug/l #	66
90) Hexachloroethane	12.548	117	351	0.461	ug/l #	17
91) 1,2-Dichlorobenzene	12.335	146	1797	0.714	ug/l	91
93) 1,2,4-Trichlorobenzene	13.591	180	481	0.279	ug/l	76
95) Naphthalene	13.774	128	478906	88.005	ug/l	100
96) 1,2,3-Trichlorobenzene	13.957	180	514	0.313	ug/l #	69

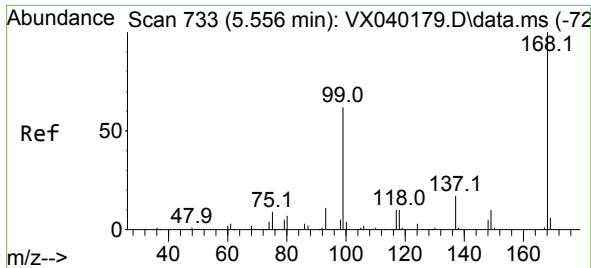
(#) = qualifier out of range (m) = manual integration (+) = signals summed

Data Path : Z:\voasrv\HPCHEM1\MSVOA_X\Data\VX021924\
 Data File : VX040328.D
 Acq On : 19 Feb 2024 14:18
 Operator : JC/MD
 Sample : P1395-01
 Misc : 4.42g/5.0mL/100uL/5.0mL/MSVOA_X/MEOH
 ALS Vial : 12 Sample Multiplier: 1

Instrument :
 MSVOA_X
 ClientSampleId :
 B-4(4-6)

Quant Time: Feb 20 01:14:47 2024
 Quant Method : Z:\voasrv\HPCHEM1\MSVOA_X\Method\82X020924W.M
 Quant Title : SW846 8260
 QLast Update : Mon Feb 12 00:21:14 2024
 Response via : Initial Calibration

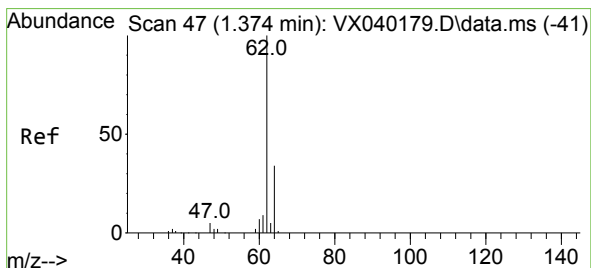
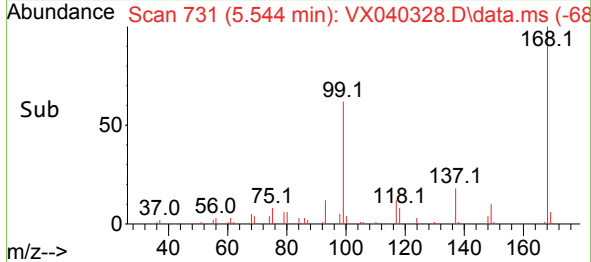
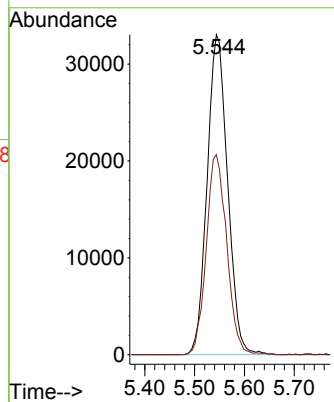
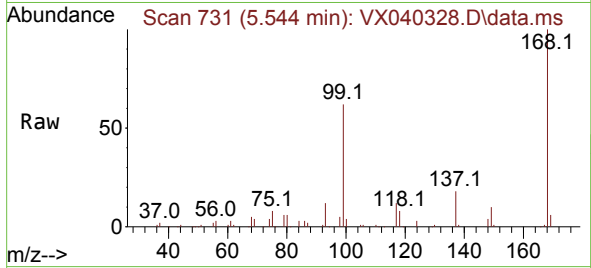




#1
 Pentafluorobenzene
 Concen: 50.000 ug/l
 RT: 5.544 min Scan# 71
 Delta R.T. -0.006 min
 Lab File: VX040328.D
 Acq: 19 Feb 2024 14:18

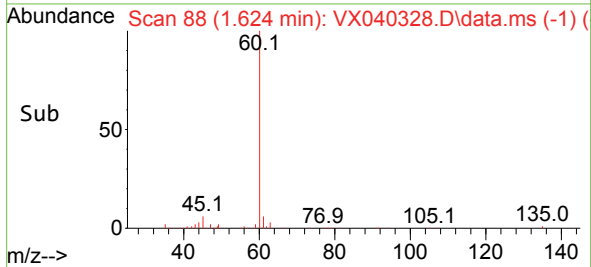
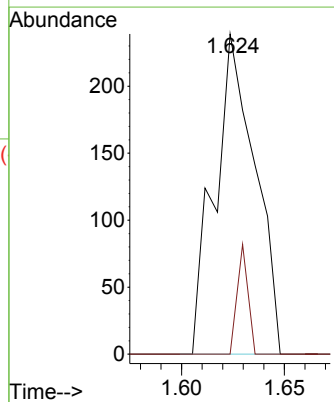
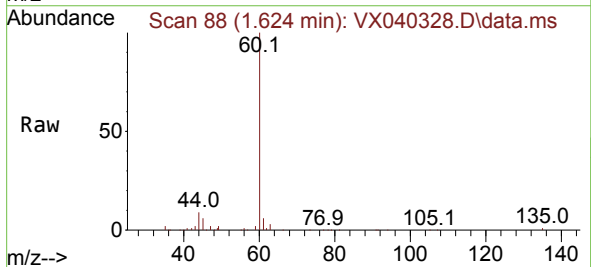
Instrument : MSVOA_X
 ClientSampleId : B-4(4-6)

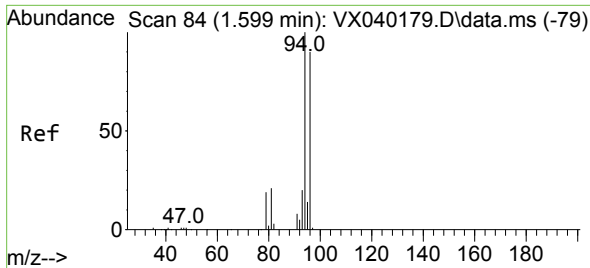
Tgt Ion:168 Resp: 94265
 Ion Ratio Lower Upper
 168 100
 99 62.5 56.6 85.0



#4
 Vinyl Chloride
 Concen: 0.282 ug/l
 RT: 1.624 min Scan# 88
 Delta R.T. 0.250 min
 Lab File: VX040328.D
 Acq: 19 Feb 2024 14:18

Tgt Ion: 62 Resp: 327
 Ion Ratio Lower Upper
 62 100
 64 0.0 25.4 38.0#

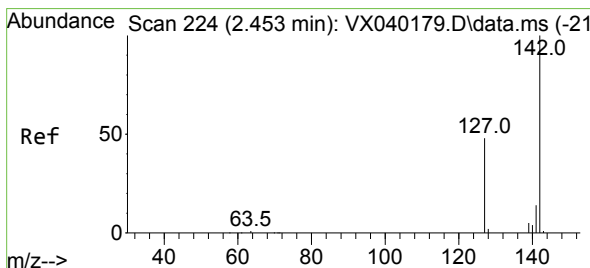
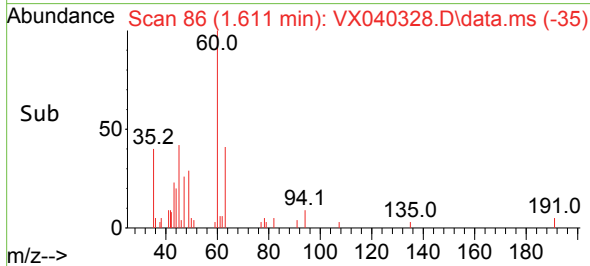
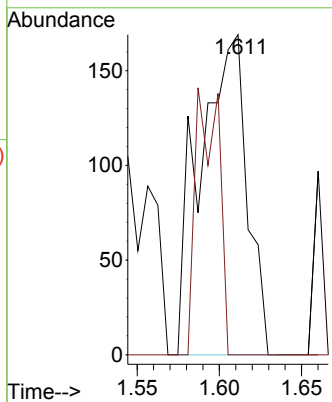
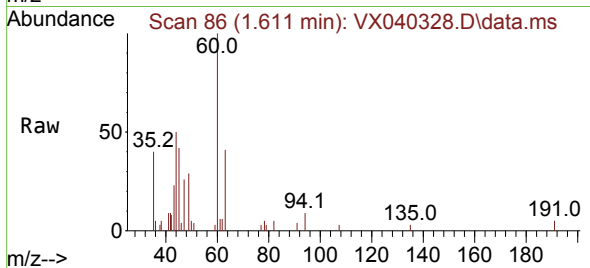




#5
 Bromomethane
 Concen: 0.515 ug/l
 RT: 1.611 min Scan# 80
 Delta R.T. 0.012 min
 Lab File: VX040328.D
 Acq: 19 Feb 2024 14:18

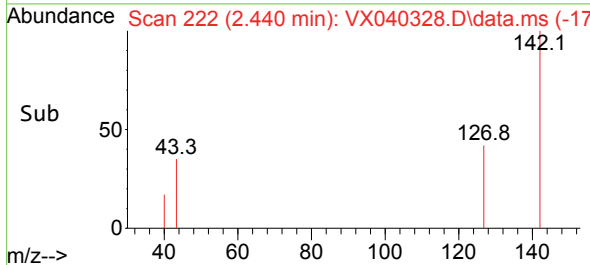
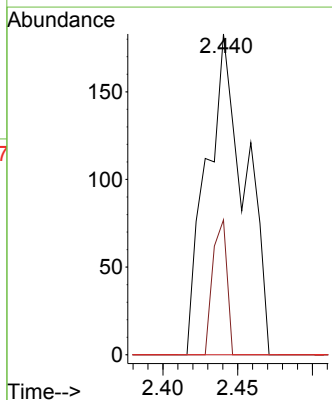
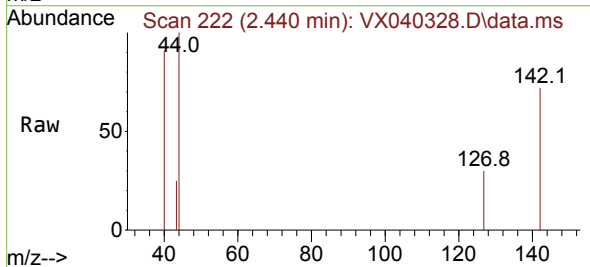
Instrument :
 MSVOA_X
 ClientSampleId :
 B-4(4-6)

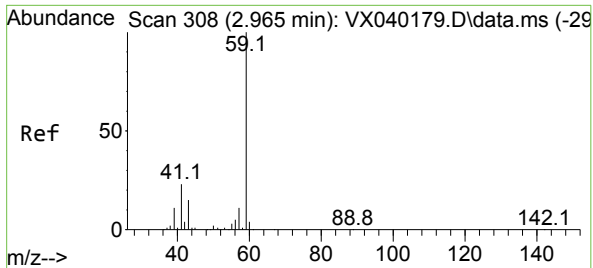
Tgt Ion: 94 Resp: 337
 Ion Ratio Lower Upper
 94 100
 96 0.0 74.6 111.8#



#10
 Methyl Iodide
 Concen: 0.294 ug/l
 RT: 2.440 min Scan# 222
 Delta R.T. -0.012 min
 Lab File: VX040328.D
 Acq: 19 Feb 2024 14:18

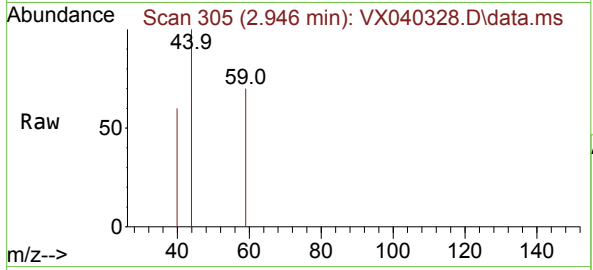
Tgt Ion:142 Resp: 326
 Ion Ratio Lower Upper
 142 100
 127 15.6 41.6 62.4#
 141 0.0 11.6 17.4#



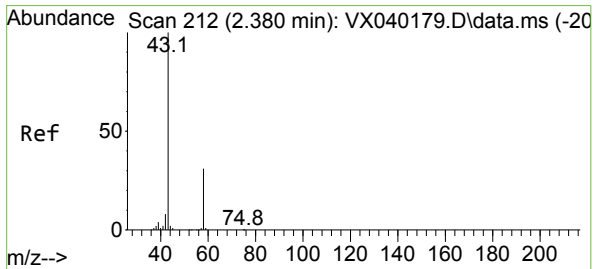
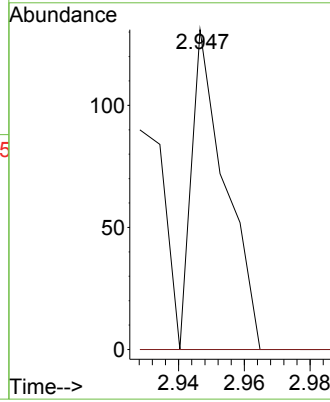
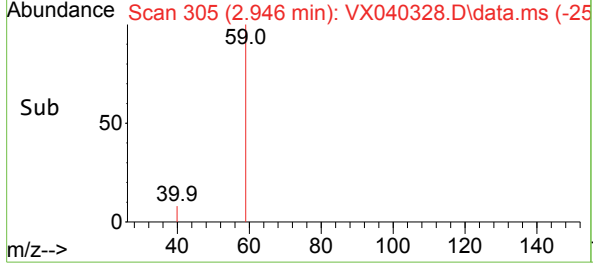


#11
 Tert butyl alcohol
 Concen: 0.340 ug/l
 RT: 2.946 min Scan# 30
 Delta R.T. -0.018 min
 Lab File: VX040328.D
 Acq: 19 Feb 2024 14:18

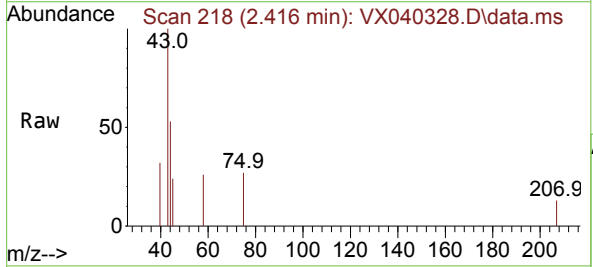
Instrument : MSVOA_X
 ClientSampleId : B-4(4-6)



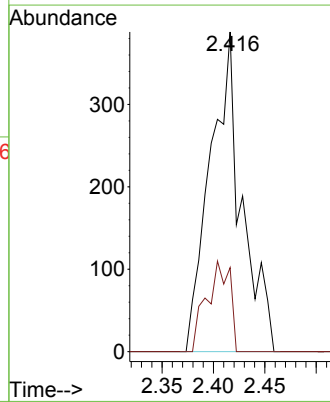
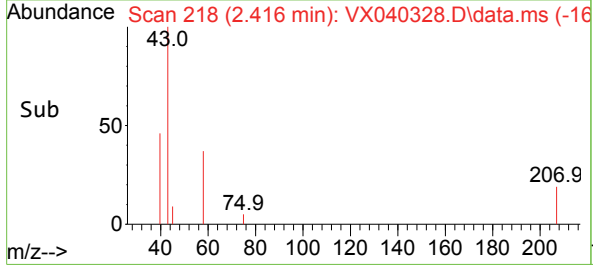
Tgt Ion: 59 Resp: 93
 Ion Ratio Lower Upper
 59 100
 57 0.0 6.0 9.0#

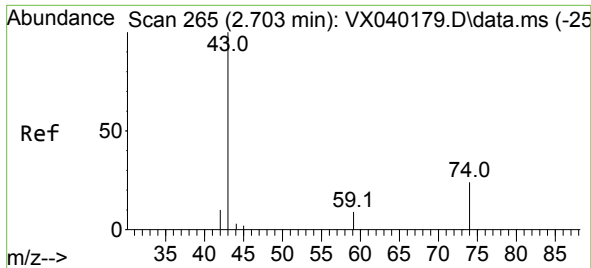


#16
 Acetone
 Concen: 1.439 ug/l
 RT: 2.416 min Scan# 218
 Delta R.T. 0.037 min
 Lab File: VX040328.D
 Acq: 19 Feb 2024 14:18



Tgt Ion: 43 Resp: 829
 Ion Ratio Lower Upper
 43 100
 58 26.3 21.9 32.9

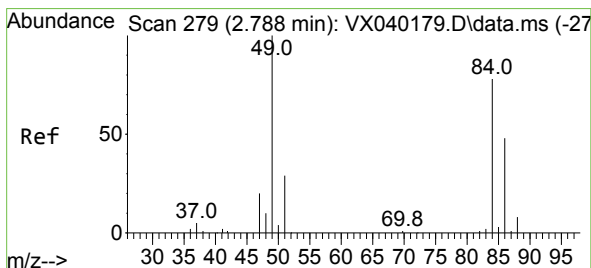
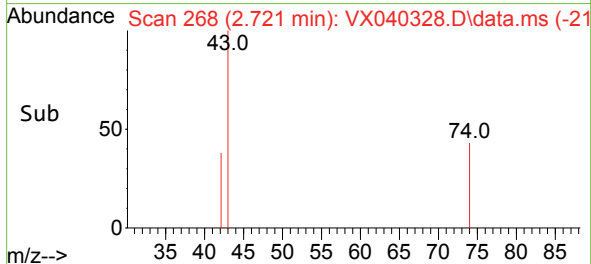
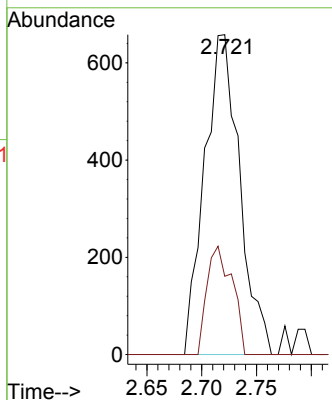
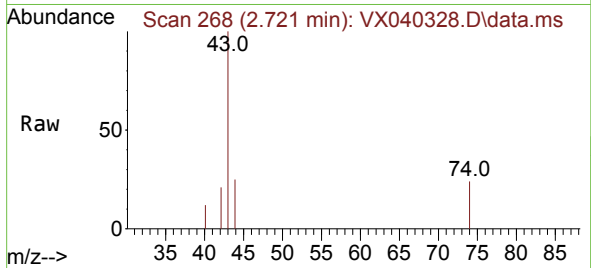




#18
 Methyl Acetate
 Concen: 0.951 ug/l
 RT: 2.721 min Scan# 20
 Delta R.T. 0.018 min
 Lab File: VX040328.D
 Acq: 19 Feb 2024 14:18

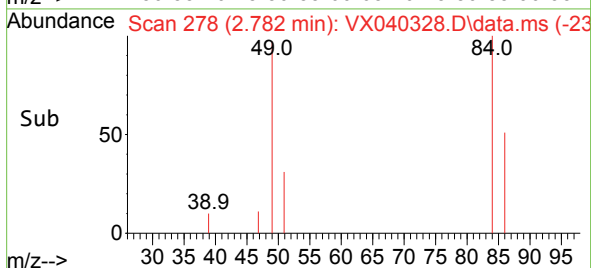
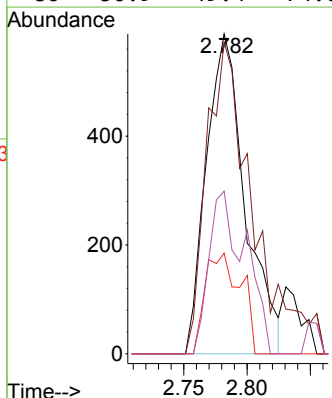
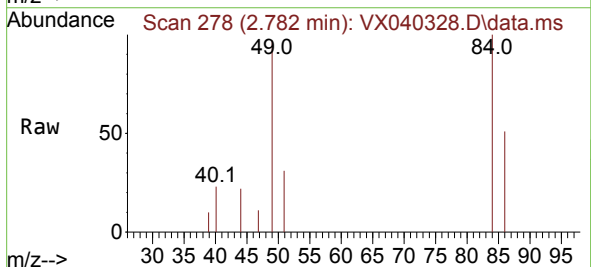
Instrument :
 MSVOA_X
 ClientSampleId :
 B-4(4-6)

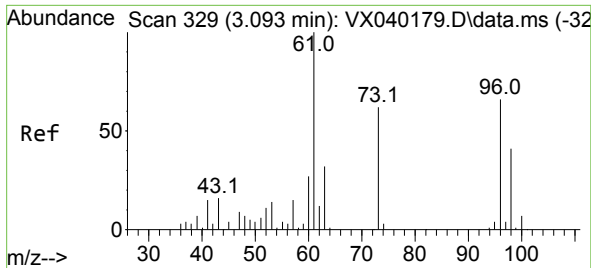
Tgt Ion: 43 Resp: 1468
 Ion Ratio Lower Upper
 43 100
 74 24.3 17.8 26.8



#20
 Methylene Chloride
 Concen: Below Cal
 RT: 2.782 min Scan# 278
 Delta R.T. -0.006 min
 Lab File: VX040328.D
 Acq: 19 Feb 2024 14:18

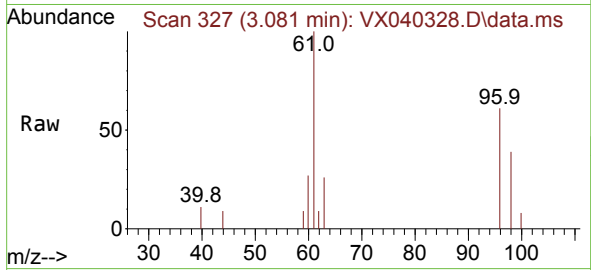
Tgt Ion: 84 Resp: 1259
 Ion Ratio Lower Upper
 84 100
 49 97.4 103.6 155.4#
 51 31.5 33.8 50.6#
 86 50.9 49.4 74.0



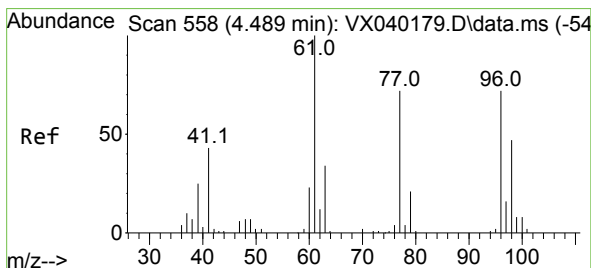
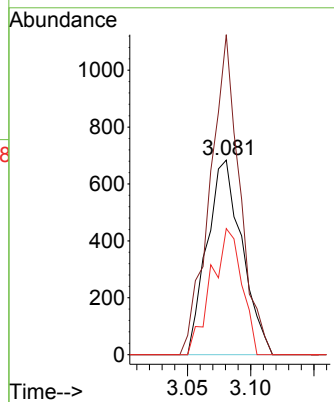
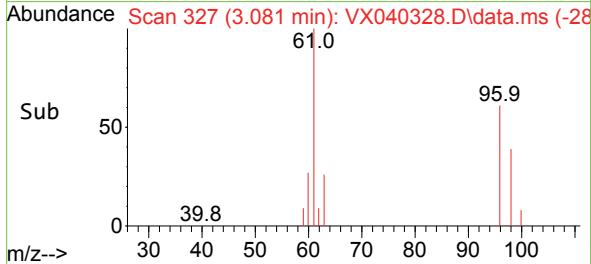


#21
 trans-1,2-Dichloroethene
 Concen: 1.197 ug/l
 RT: 3.081 min Scan# 31
 Delta R.T. -0.012 min
 Lab File: VX040328.D
 Acq: 19 Feb 2024 14:18

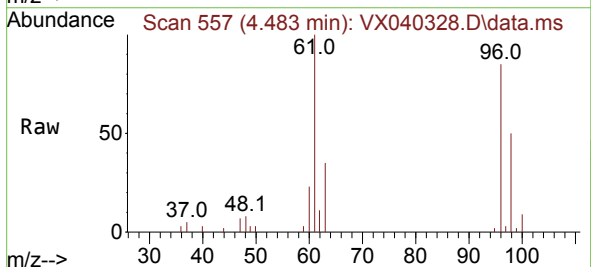
Instrument :
 MSVOA_X
 ClientSampleId :
 B-4(4-6)



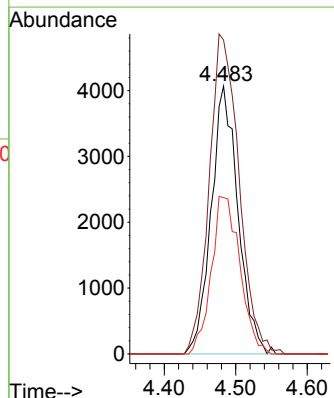
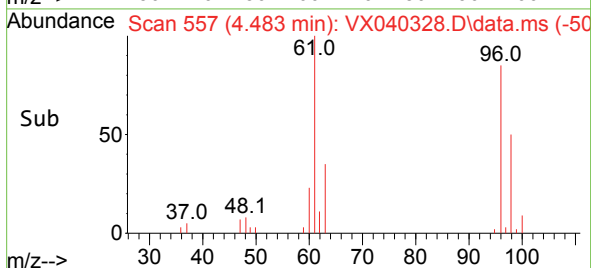
Tgt Ion: 96 Resp: 1312
 Ion Ratio Lower Upper
 96 100
 61 164.5 119.2 178.8
 98 64.8 48.7 73.1

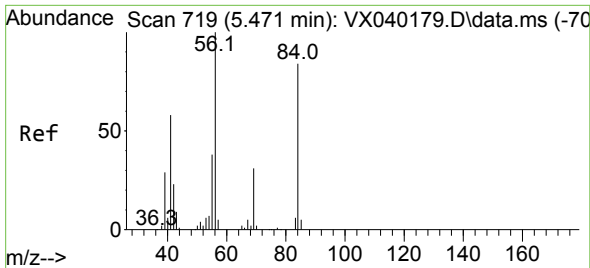


#27
 cis-1,2-Dichloroethene
 Concen: 8.476 ug/l
 RT: 4.483 min Scan# 557
 Delta R.T. -0.006 min
 Lab File: VX040328.D
 Acq: 19 Feb 2024 14:18



Tgt Ion: 96 Resp: 10598
 Ion Ratio Lower Upper
 96 100
 61 132.8 0.0 312.2
 98 62.7 0.0 129.0



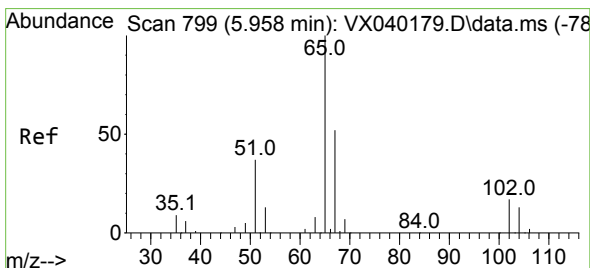
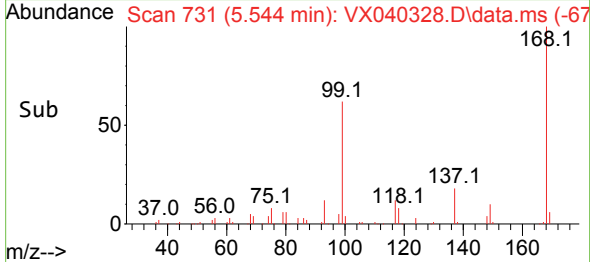
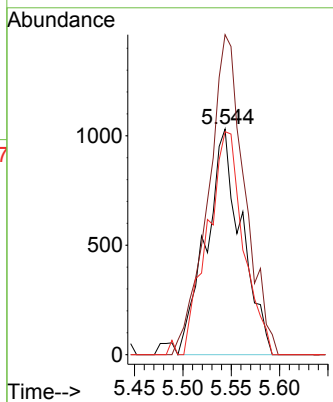
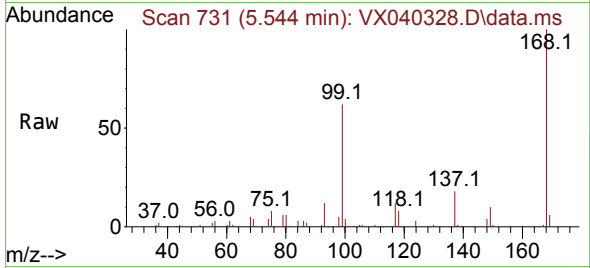


#31
 Cyclohexane
 Concen: 1.562 ug/l
 RT: 5.544 min Scan# 719
 Delta R.T. 0.073 min
 Lab File: VX040328.D
 Acq: 19 Feb 2024 14:18

Instrument :
 MSVOA_X
 ClientSampleId :
 B-4(4-6)

Tgt Ion: 56 Resp: 2613

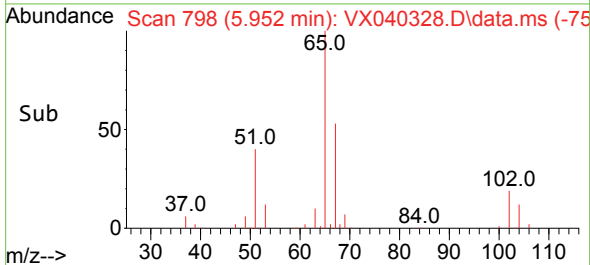
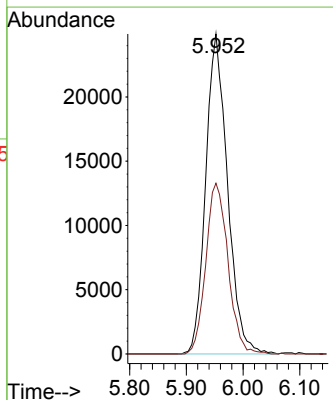
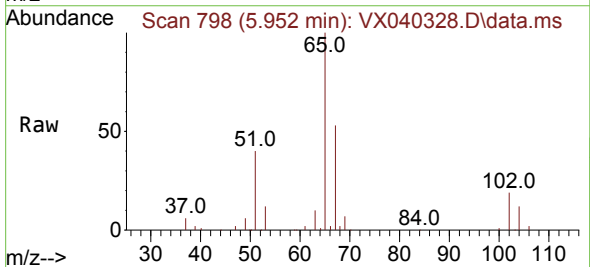
Ion	Ratio	Lower	Upper
56	100		
69	141.8	23.4	35.2#
84	98.8	65.9	98.9

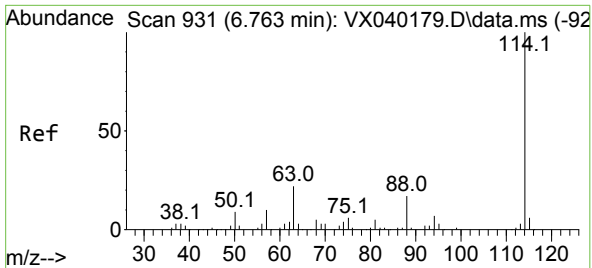


#33
 1,2-Dichloroethane-d4
 Concen: 47.381 ug/l
 RT: 5.952 min Scan# 798
 Delta R.T. -0.006 min
 Lab File: VX040328.D
 Acq: 19 Feb 2024 14:18

Tgt Ion: 65 Resp: 66446

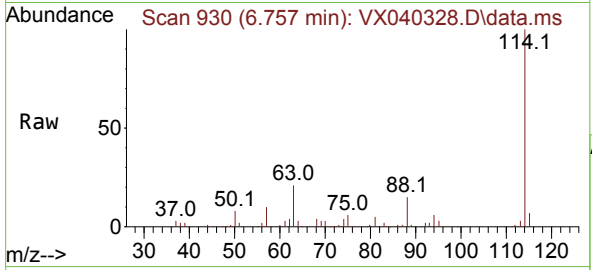
Ion	Ratio	Lower	Upper
65	100		
67	54.4	0.0	100.2





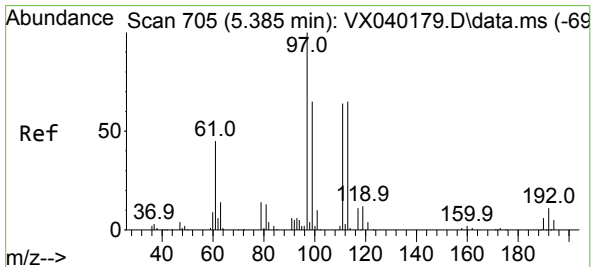
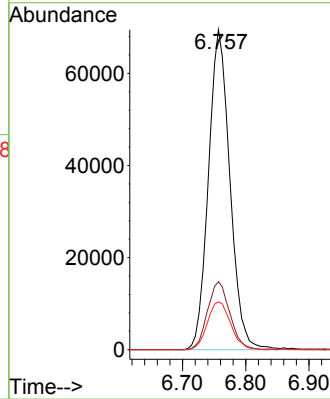
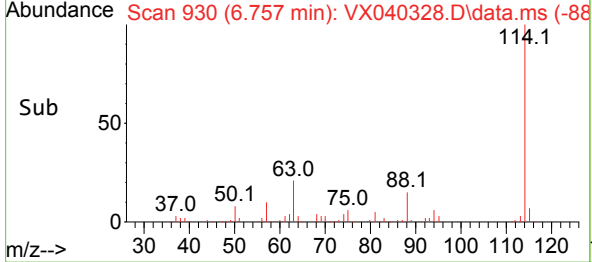
#34
 1,4-Difluorobenzene
 Concen: 50.000 ug/l
 RT: 6.757 min Scan# 911
 Delta R.T. -0.006 min
 Lab File: VX040328.D
 Acq: 19 Feb 2024 14:18

Instrument : MSVOA_X
 ClientSampleId : B-4(4-6)

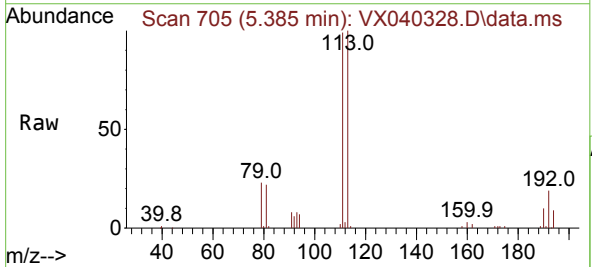


Tgt Ion:114 Resp: 163853

Ion	Ratio	Lower	Upper
114	100		
63	21.2	0.0	45.0
88	15.0	0.0	36.6

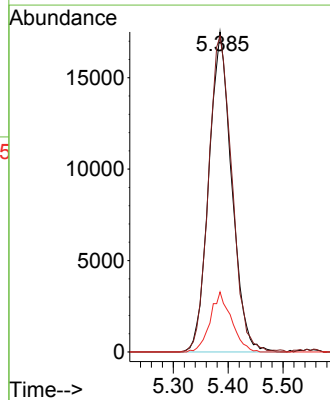
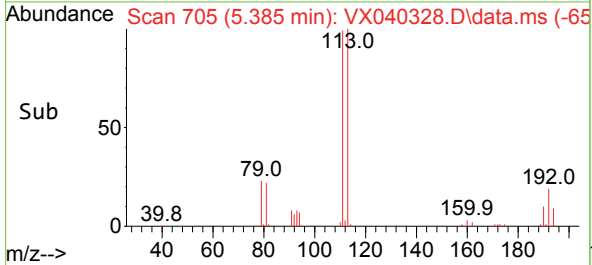


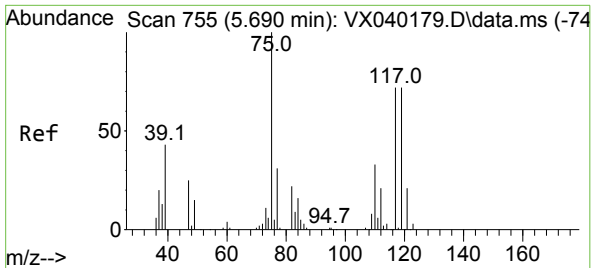
#35
 Dibromofluoromethane
 Concen: 44.216 ug/l
 RT: 5.385 min Scan# 705
 Delta R.T. 0.000 min
 Lab File: VX040328.D
 Acq: 19 Feb 2024 14:18



Tgt Ion:113 Resp: 50595

Ion	Ratio	Lower	Upper
113	100		
111	101.2	82.9	124.3
192	17.5	13.3	19.9

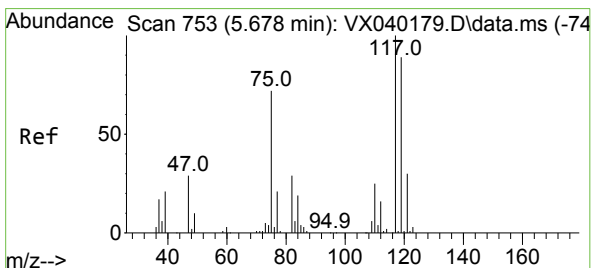
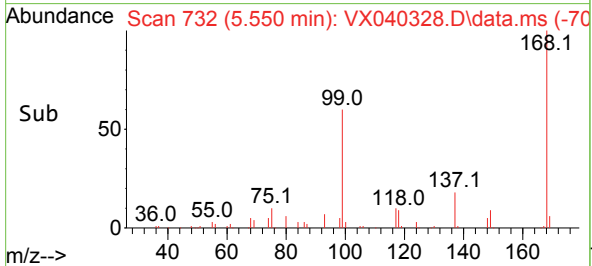
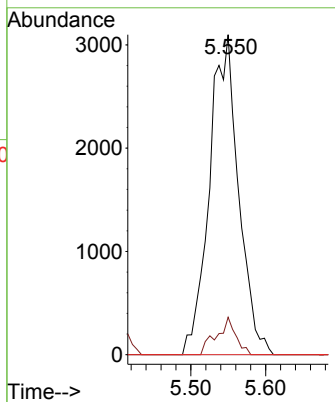
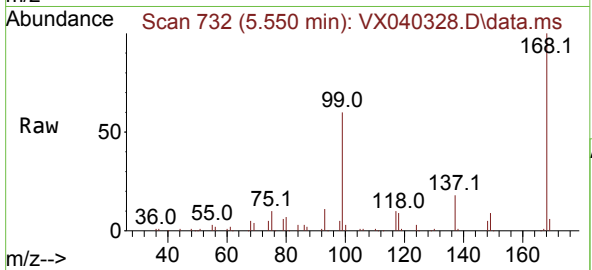




#36
 1,1-Dichloropropene
 Concen: 5.245 ug/l
 RT: 5.550 min Scan# 711
 Delta R.T. -0.146 min
 Lab File: VX040328.D
 Acq: 19 Feb 2024 14:18

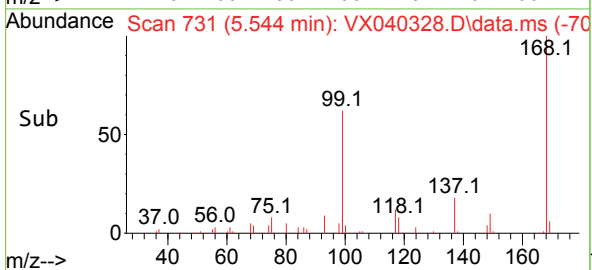
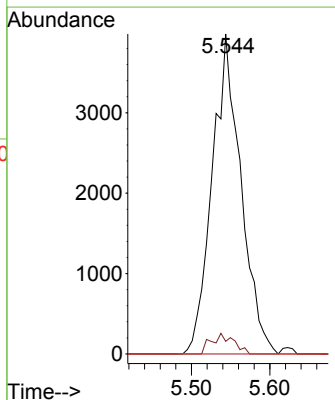
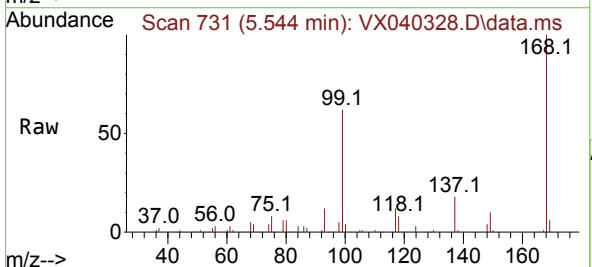
Instrument : MSVOA_X
 ClientSampleId : B-4(4-6)

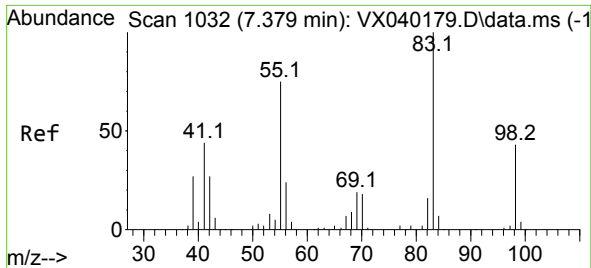
Tgt Ion:	Resp:	Lower	Upper
75	8407		
75	100		
110	7.7	17.0	50.9#
77	0.0	24.7	37.1#



#38
 Carbon Tetrachloride
 Concen: 6.664 ug/l
 RT: 5.544 min Scan# 731
 Delta R.T. -0.128 min
 Lab File: VX040328.D
 Acq: 19 Feb 2024 14:18

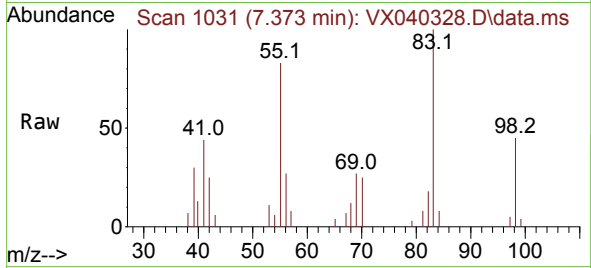
Tgt Ion:	Resp:	Lower	Upper
117	10156		
117	100		
119	4.0	78.2	117.2#
121	0.0	24.4	36.6#



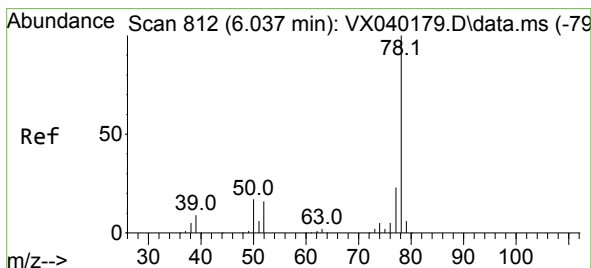
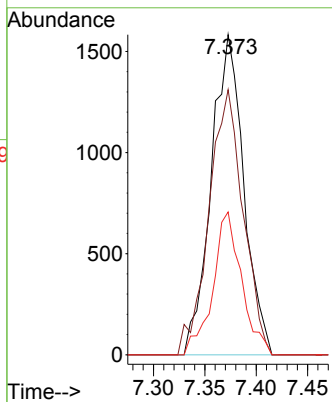
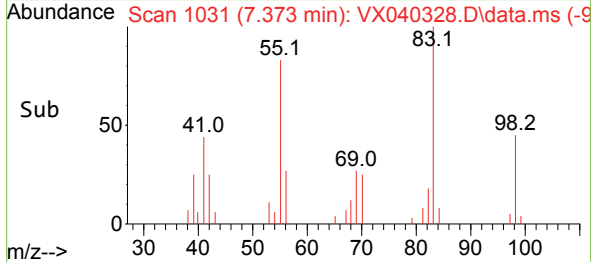


#39
 Methylcyclohexane
 Concen: 1.870 ug/l
 RT: 7.373 min Scan# 1031
 Delta R.T. -0.006 min
 Lab File: VX040328.D
 Acq: 19 Feb 2024 14:18

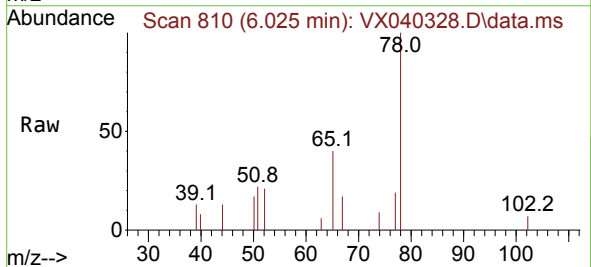
Instrument : MSVOA_X
 ClientSampleId : B-4(4-6)



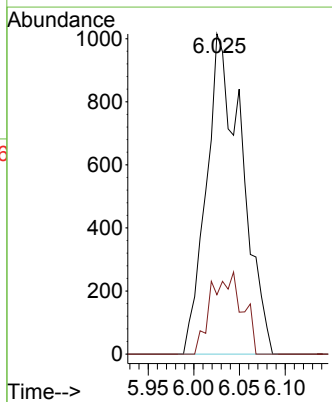
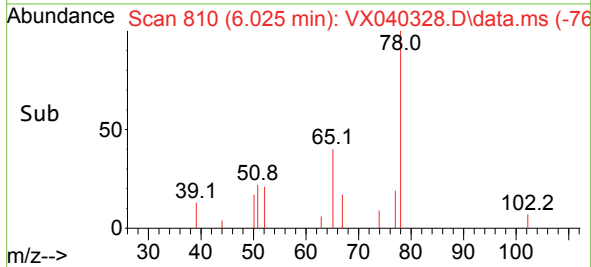
Tgt Ion: 83 Resp: 3484
 Ion Ratio Lower Upper
 83 100
 55 82.8 64.6 97.0
 98 44.6 36.7 55.1

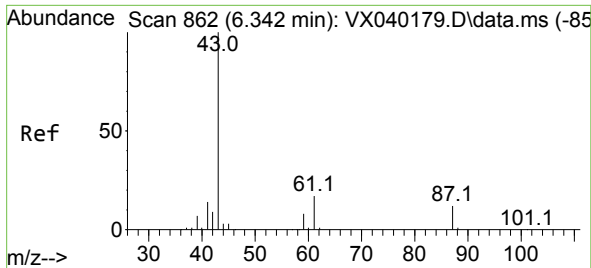


#40
 Benzene
 Concen: 0.613 ug/l
 RT: 6.025 min Scan# 810
 Delta R.T. -0.012 min
 Lab File: VX040328.D
 Acq: 19 Feb 2024 14:18



Tgt Ion: 78 Resp: 2747
 Ion Ratio Lower Upper
 78 100
 77 18.5 19.3 28.9#



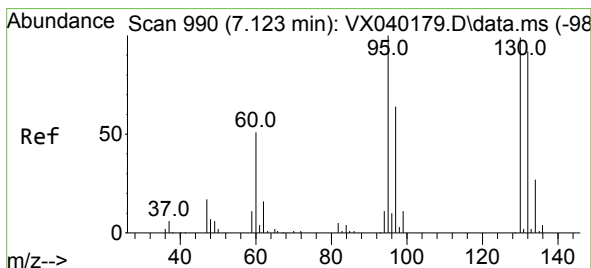
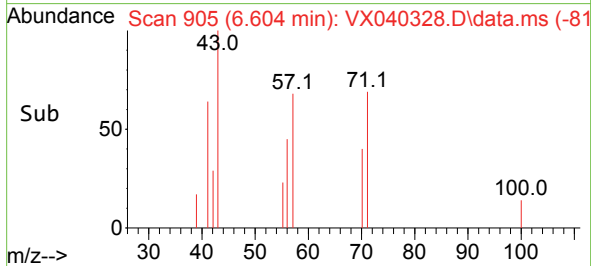
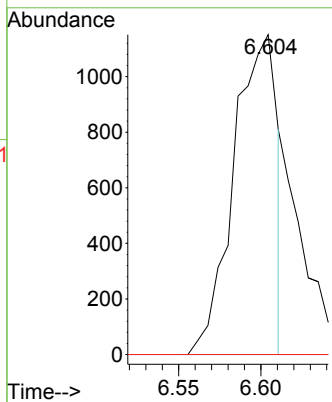
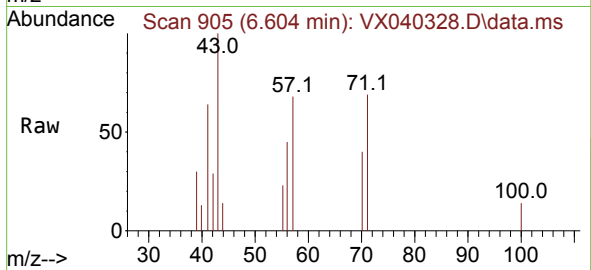


#43
 Isopropyl Acetate
 Concen: 0.763 ug/l
 RT: 6.604 min Scan# 905
 Delta R.T. 0.262 min
 Lab File: VX040328.D
 Acq: 19 Feb 2024 14:18

Instrument : MSVOA_X
 ClientSampleId : B-4(4-6)

Tgt Ion: 43 Resp: 2123

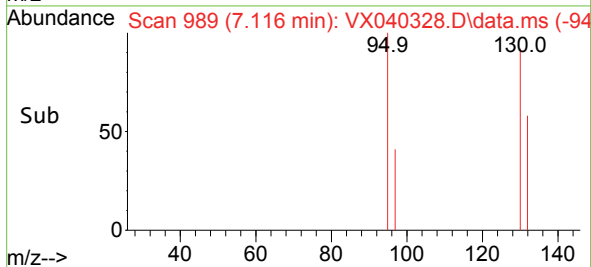
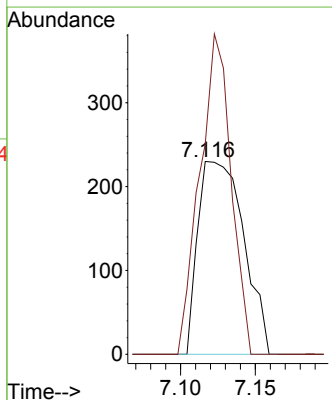
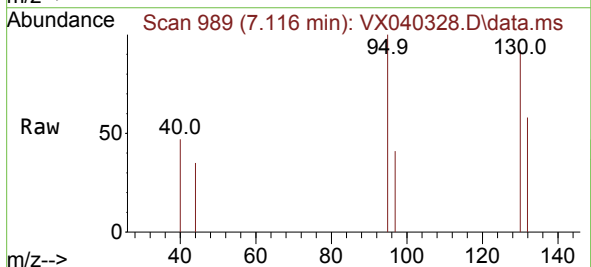
Ion	Ratio	Lower	Upper
43	100		
61	0.0	15.2	22.8#
87	0.0	9.8	14.6#

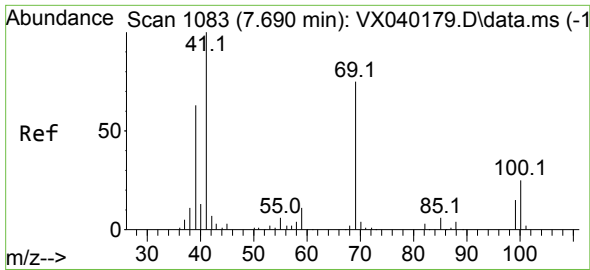


#44
 Trichloroethene
 Concen: 0.395 ug/l
 RT: 7.116 min Scan# 989
 Delta R.T. -0.012 min
 Lab File: VX040328.D
 Acq: 19 Feb 2024 14:18

Tgt Ion: 130 Resp: 489

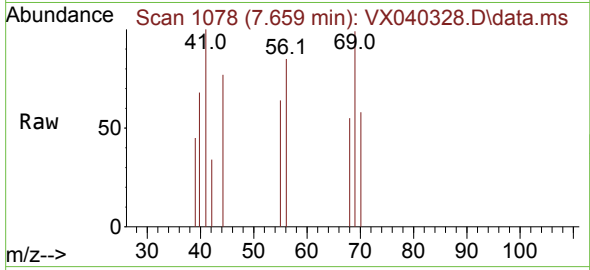
Ion	Ratio	Lower	Upper
130	100		
95	109.1	0.0	204.4



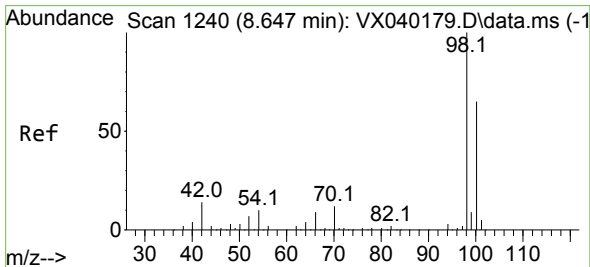
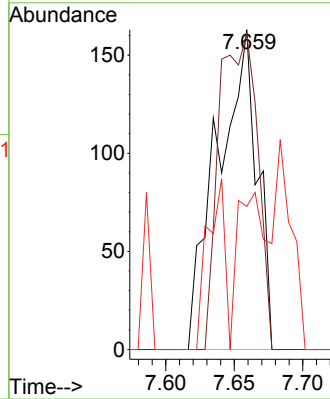
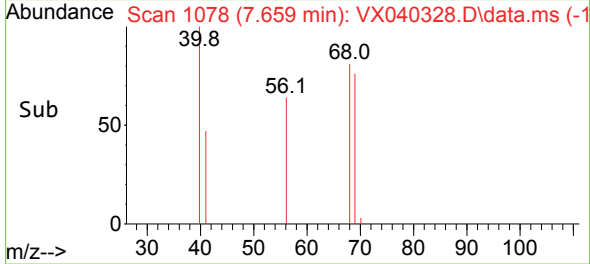


#48
 Methyl methacrylate
 Concen: 0.231 ug/l
 RT: 7.659 min Scan# 1083
 Delta R.T. -0.037 min
 Lab File: VX040328.D
 Acq: 19 Feb 2024 14:18

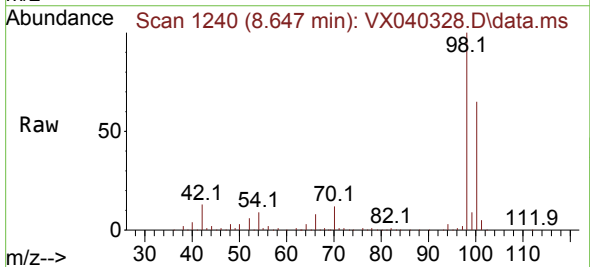
Instrument : MSVOA_X
 ClientSampleId : B-4(4-6)



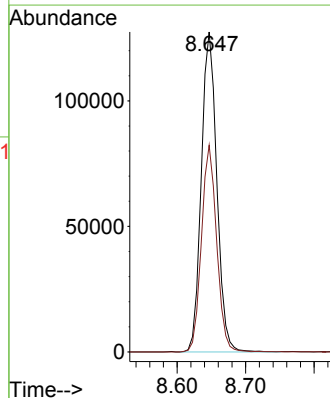
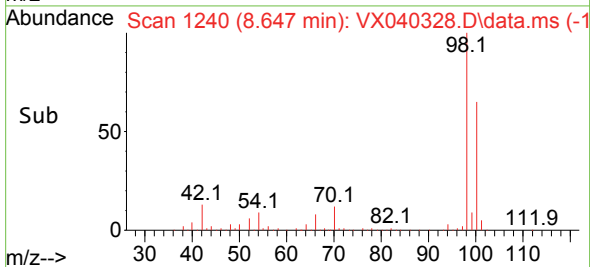
Tgt Ion: 41 Resp: 329
 Ion Ratio Lower Upper
 41 100
 69 95.1 59.2 88.8#
 39 37.7 47.7 71.5#

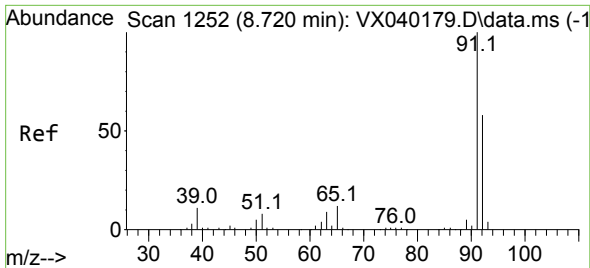


#50
 Toluene-d8
 Concen: 46.962 ug/l
 RT: 8.647 min Scan# 1240
 Delta R.T. -0.006 min
 Lab File: VX040328.D
 Acq: 19 Feb 2024 14:18



Tgt Ion: 98 Resp: 201013
 Ion Ratio Lower Upper
 98 100
 100 63.5 53.1 79.7

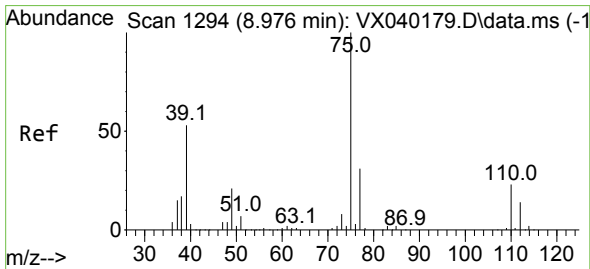
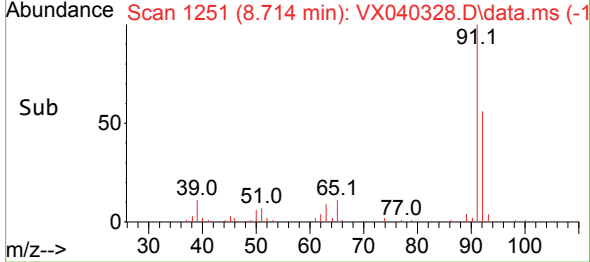
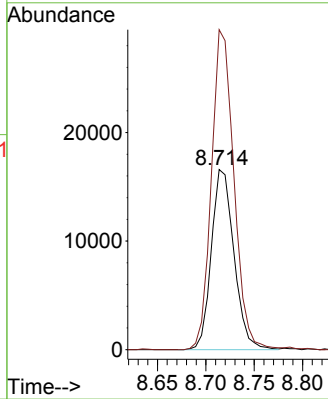
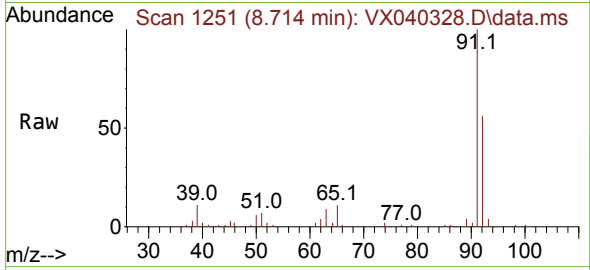




#52
 Toluene
 Concen: 9.202 ug/l
 RT: 8.714 min Scan# 11
 Delta R.T. -0.006 min
 Lab File: VX040328.D
 Acq: 19 Feb 2024 14:18

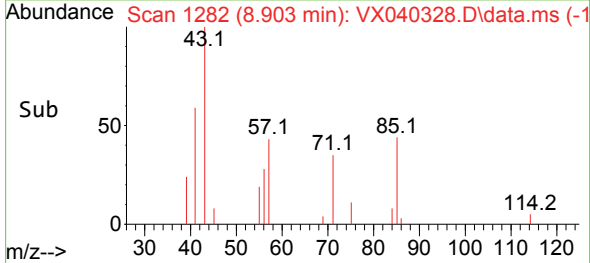
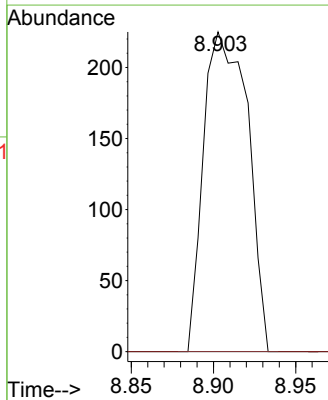
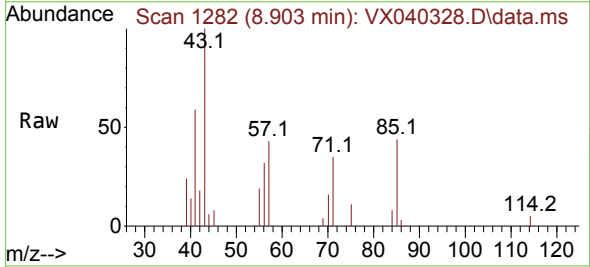
Instrument :
 MSVOA_X
 ClientSampleId :
 B-4(4-6)

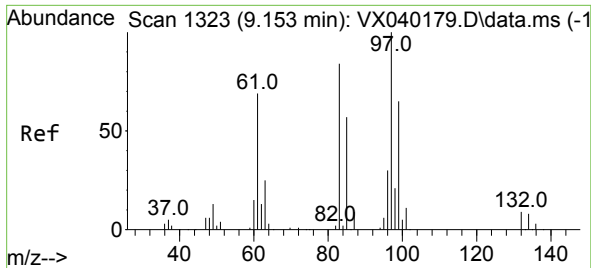
Tgt Ion: 92 Resp: 27017
 Ion Ratio Lower Upper
 92 100
 91 177.4 134.2 201.2



#53
 t-1,3-Dichloropropene
 Concen: 2.161 ug/l
 RT: 8.903 min Scan# 1282
 Delta R.T. -0.073 min
 Lab File: VX040328.D
 Acq: 19 Feb 2024 14:18

Tgt Ion: 75 Resp: 420
 Ion Ratio Lower Upper
 75 100
 77 0.0 25.7 38.5#

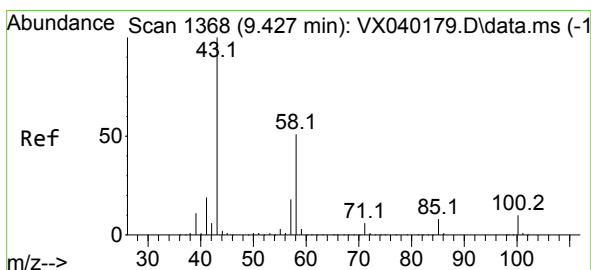
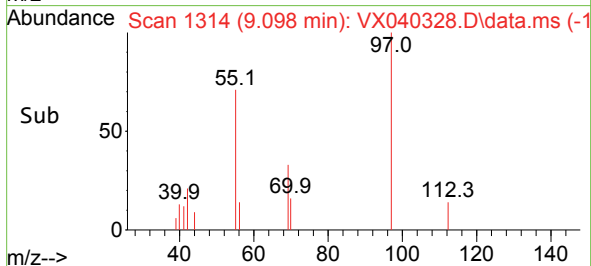
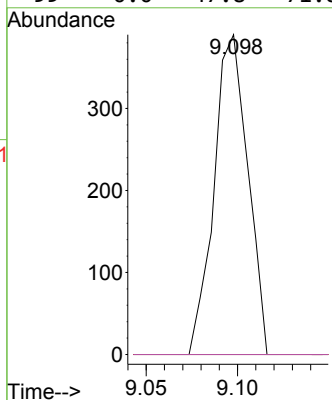
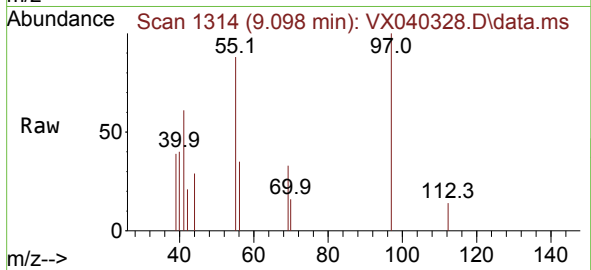




#55
 1,1,2-Trichloroethane
 Concen: 0.400 ug/l
 RT: 9.098 min Scan# 111
 Delta R.T. -0.055 min
 Lab File: VX040328.D
 Acq: 19 Feb 2024 14:18

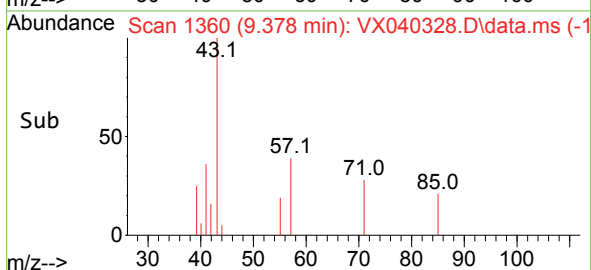
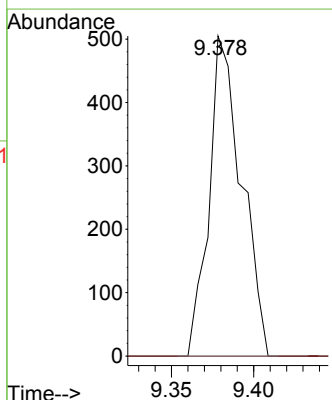
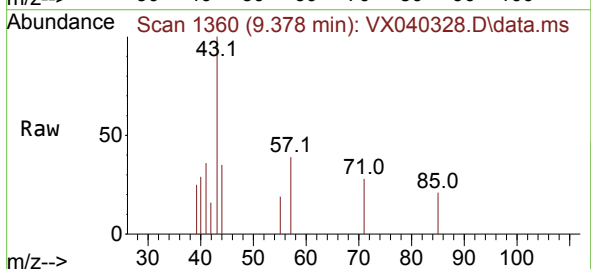
Instrument : MSVOA_X
 ClientSampleId : B-4(4-6)

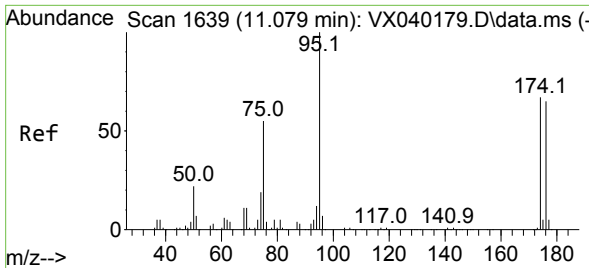
Tgt Ion	Resp	Lower	Upper
97	100		
83	0.0	65.8	98.8#
85	0.0	41.6	62.4#
99	0.0	47.8	71.8#



#59
 2-Hexanone
 Concen: 0.460 ug/l
 RT: 9.378 min Scan# 1360
 Delta R.T. -0.049 min
 Lab File: VX040328.D
 Acq: 19 Feb 2024 14:18

Tgt Ion	Resp	Lower	Upper
43	100		
58	0.0	26.2	78.5#



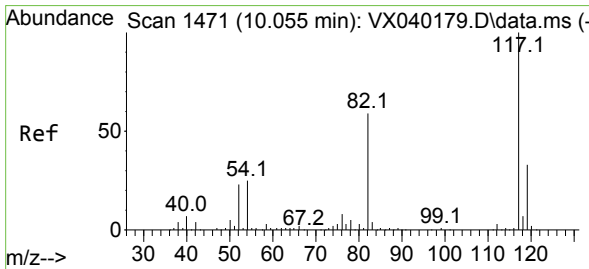
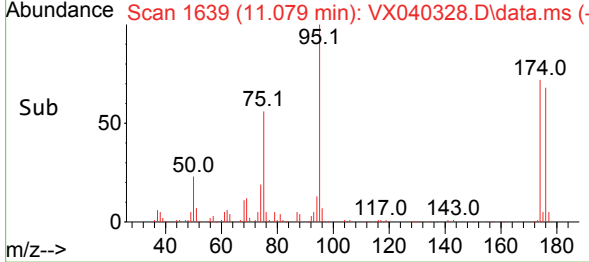
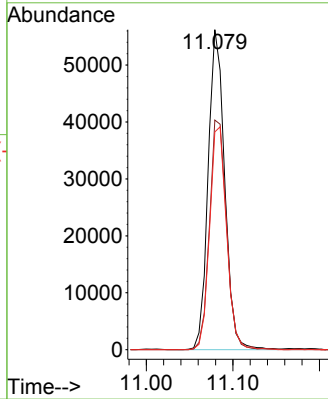
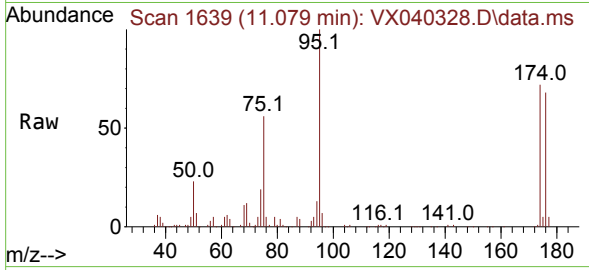


#62
 4-Bromofluorobenzene
 Concen: 42.718 ug/l
 RT: 11.079 min Scan# 1639
 Delta R.T. 0.000 min
 Lab File: VX040328.D
 Acq: 19 Feb 2024 14:18

Instrument : MSVOA_X
 ClientSampleId : B-4(4-6)

Tgt Ion: 95 Resp: 74573

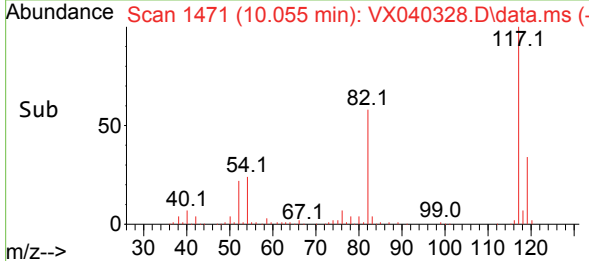
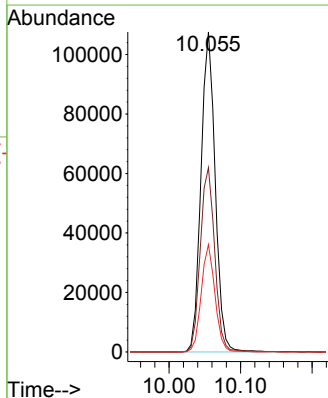
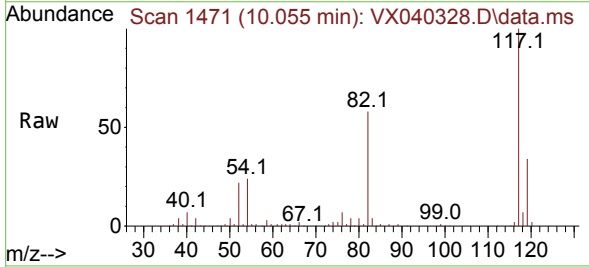
Ion	Ratio	Lower	Upper
95	100		
174	74.2	0.0	135.6
176	71.4	0.0	131.0

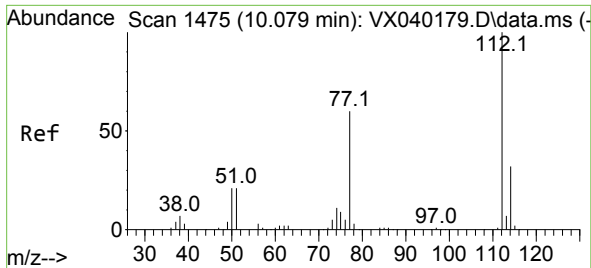


#63
 Chlorobenzene-d5
 Concen: 50.000 ug/l
 RT: 10.055 min Scan# 1471
 Delta R.T. 0.000 min
 Lab File: VX040328.D
 Acq: 19 Feb 2024 14:18

Tgt Ion: 117 Resp: 148710

Ion	Ratio	Lower	Upper
117	100		
82	57.6	46.2	69.4
119	33.5	25.5	38.3

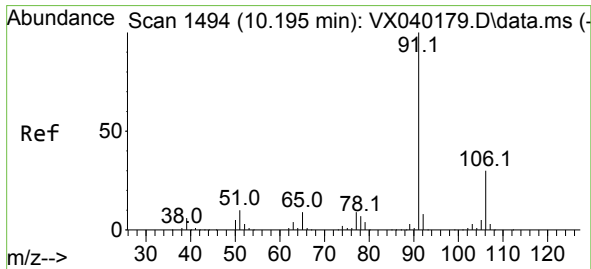
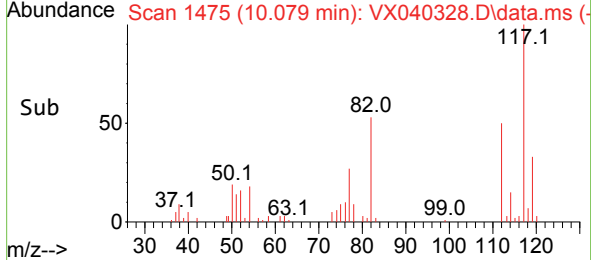
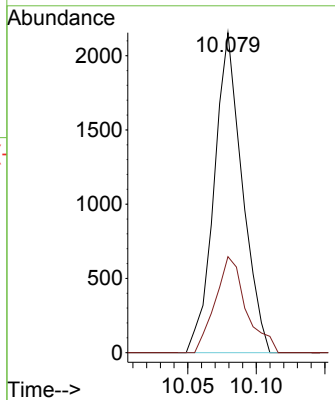
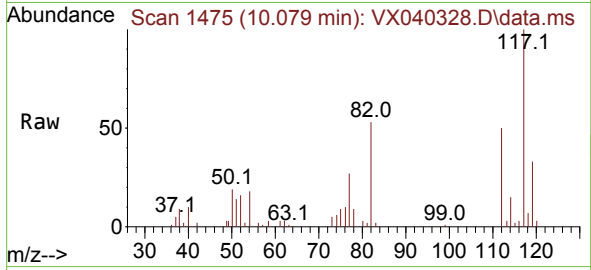




#65
 Chlorobenzene
 Concen: 0.991 ug/l
 RT: 10.079 min Scan# 1475
 Delta R.T. 0.000 min
 Lab File: VX040328.D
 Acq: 19 Feb 2024 14:18

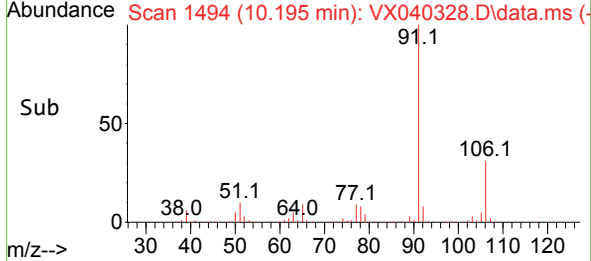
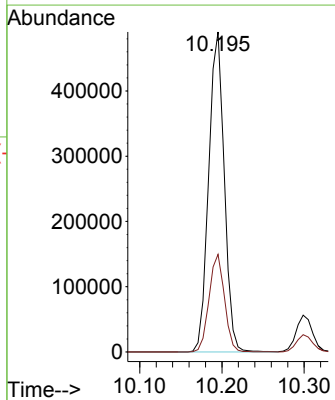
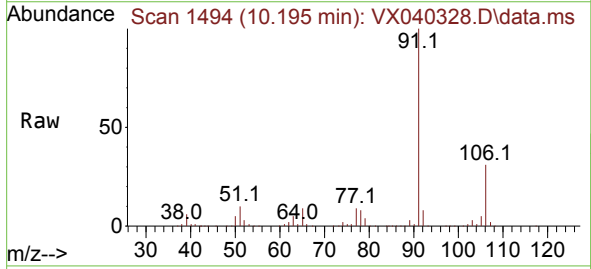
Instrument : MSVOA_X
ClientSampleId : B-4(4-6)

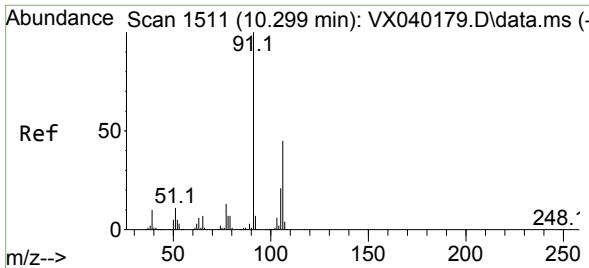
Tgt Ion	Resp	Ion Ratio	Lower	Upper
112	3076	100		
114		30.0	25.7	38.5



#67
 Ethyl Benzene
 Concen: 116.768 ug/l
 RT: 10.195 min Scan# 1494
 Delta R.T. 0.000 min
 Lab File: VX040328.D
 Acq: 19 Feb 2024 14:18

Tgt Ion	Resp	Ion Ratio	Lower	Upper
91	645441	100		
106		30.5	24.9	37.3

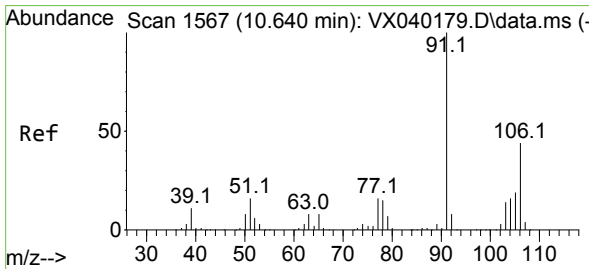
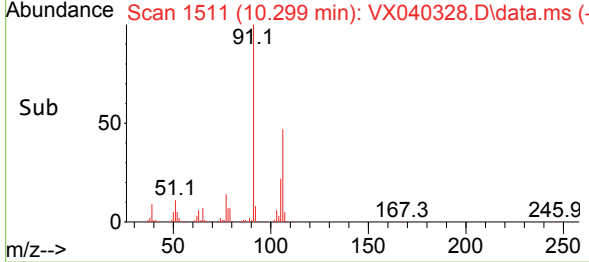
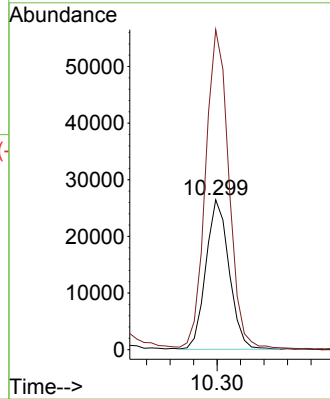
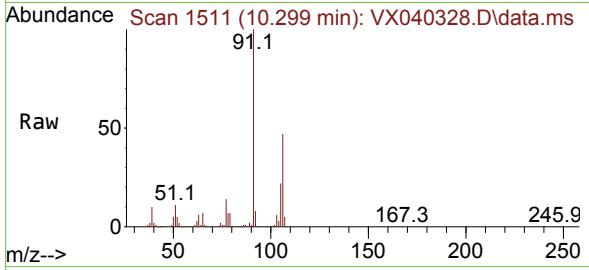




#68
 m/p-Xylenes
 Concen: 17.362 ug/l
 RT: 10.299 min Scan# 1511
 Delta R.T. 0.000 min
 Lab File: VX040328.D
 Acq: 19 Feb 2024 14:18

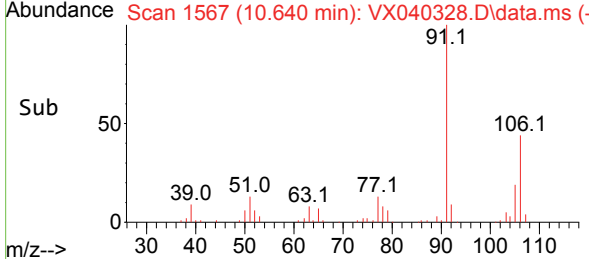
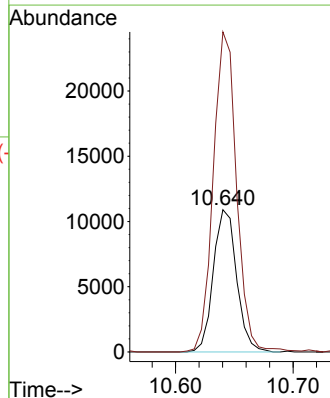
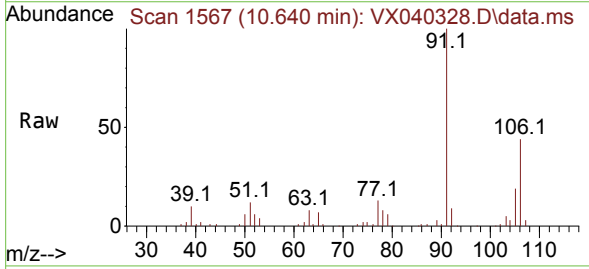
Instrument : MSVOA_X
 ClientSampleId : B-4(4-6)

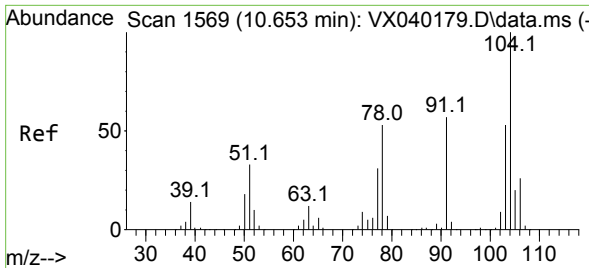
Tgt Ion:106 Resp: 36246
 Ion Ratio Lower Upper
 106 100
 91 215.2 165.5 248.3



#69
 o-Xylene
 Concen: 7.402 ug/l
 RT: 10.640 min Scan# 1567
 Delta R.T. 0.000 min
 Lab File: VX040328.D
 Acq: 19 Feb 2024 14:18

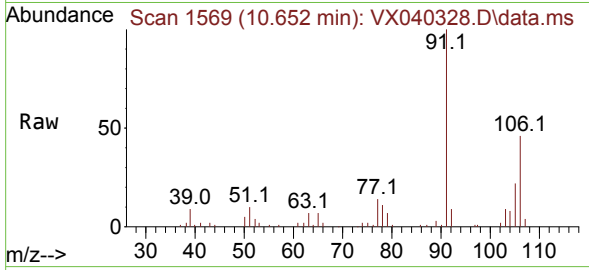
Tgt Ion:106 Resp: 15016
 Ion Ratio Lower Upper
 106 100
 91 225.3 108.9 326.8



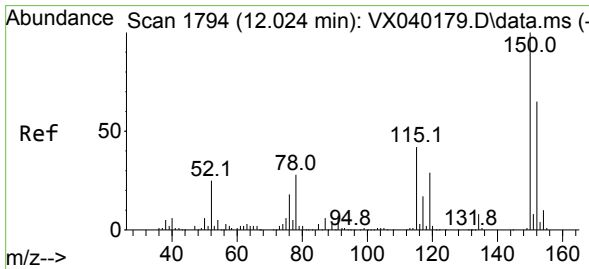
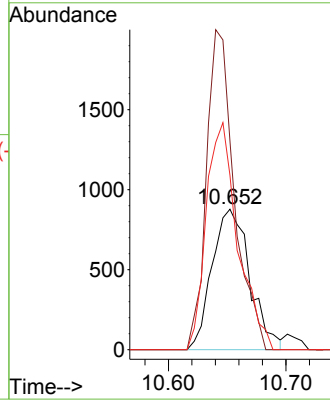
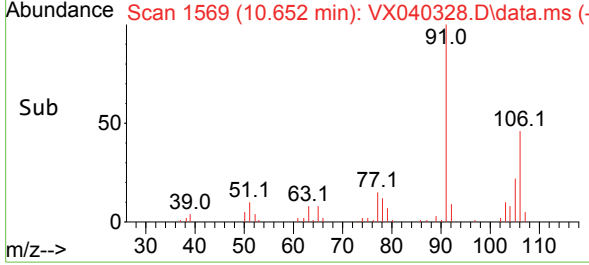


#70
 Styrene
 Concen: 0.581 ug/l
 RT: 10.652 min Scan# 11
 Delta R.T. 0.000 min
 Lab File: VX040328.D
 Acq: 19 Feb 2024 14:18

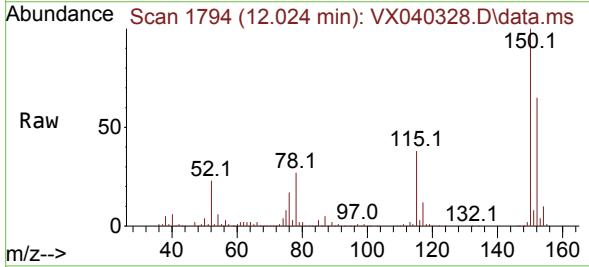
Instrument :
 MSVOA_X
 ClientSampleId :
 B-4(4-6)



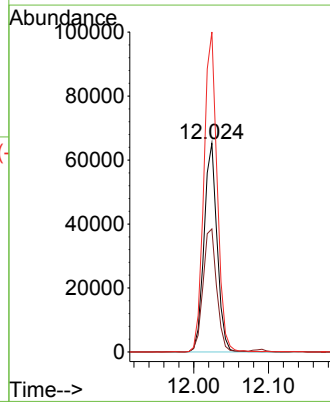
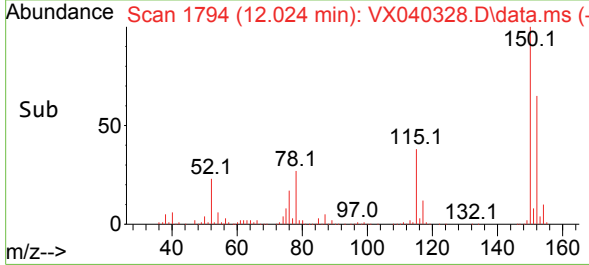
Tgt Ion:104 Resp: 1960
 Ion Ratio Lower Upper
 104 100
 78 167.9 43.6 65.4#
 103 135.0 43.6 65.4#

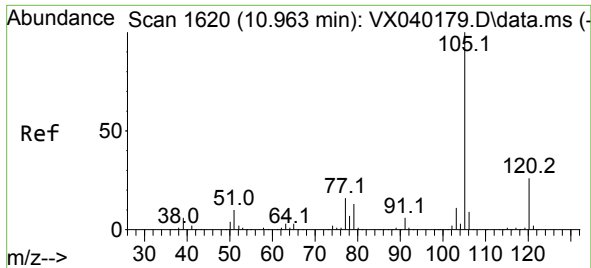


#72
 1,4-Dichlorobenzene-d4
 Concen: 50.000 ug/l
 RT: 12.024 min Scan# 1794
 Delta R.T. 0.000 min
 Lab File: VX040328.D
 Acq: 19 Feb 2024 14:18



Tgt Ion:152 Resp: 78873
 Ion Ratio Lower Upper
 152 100
 115 62.1 43.3 129.9
 150 156.2 0.0 345.0

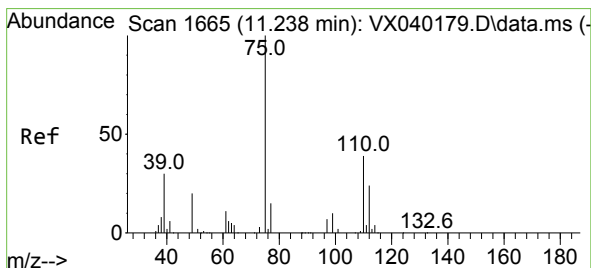
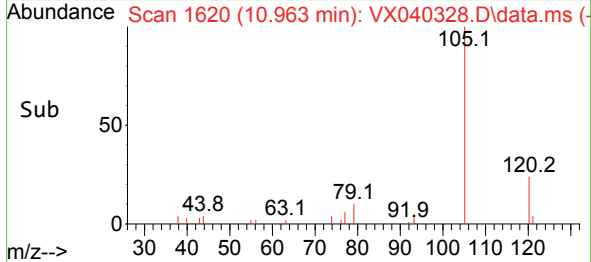
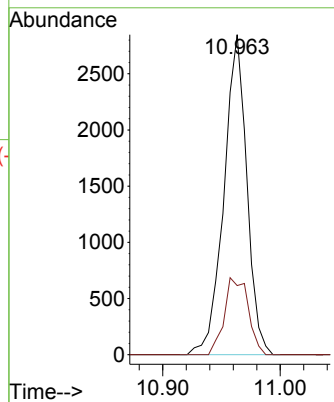
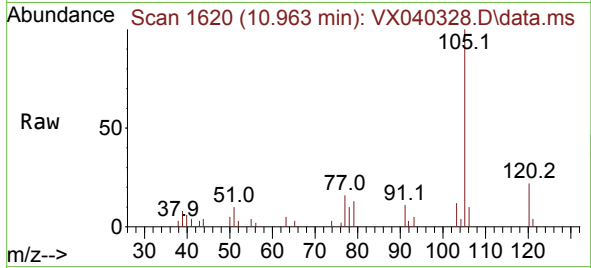




#73
 Isopropylbenzene
 Concen: 0.696 ug/l
 RT: 10.963 min Scan# 1639
 Delta R.T. 0.000 min
 Lab File: VX040328.D
 Acq: 19 Feb 2024 14:18

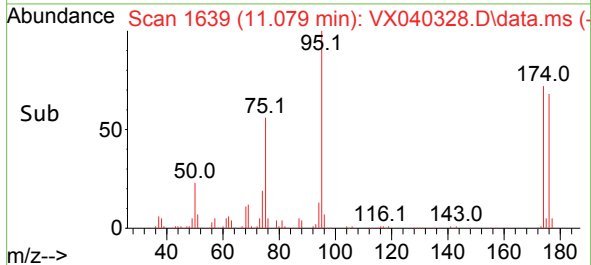
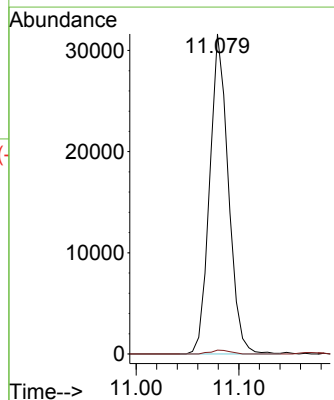
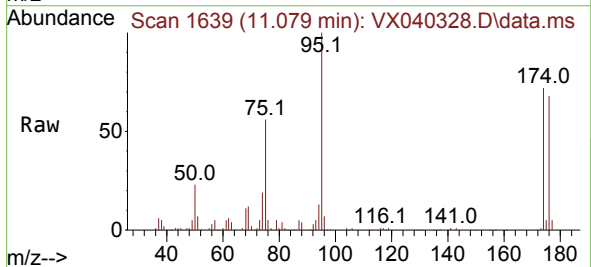
Instrument :
 MSVOA_X
 ClientSampleId :
 B-4(4-6)

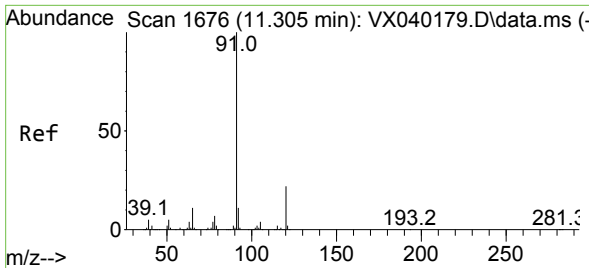
Tgt Ion:105 Resp: 3864
 Ion Ratio Lower Upper
 105 100
 120 25.0 12.9 38.6



#76
 1,2,3-Trichloropropane
 Concen: 25.056 ug/l
 RT: 11.079 min Scan# 1639
 Delta R.T. -0.159 min
 Lab File: VX040328.D
 Acq: 19 Feb 2024 14:18

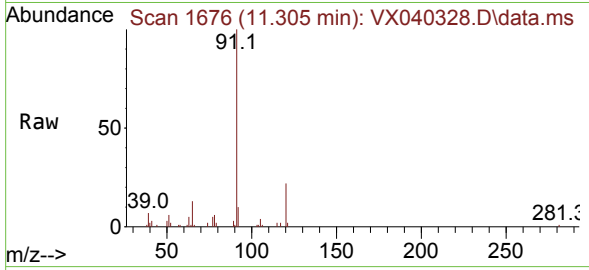
Tgt Ion: 75 Resp: 40020
 Ion Ratio Lower Upper
 75 100
 77 1.3 19.1 57.5#



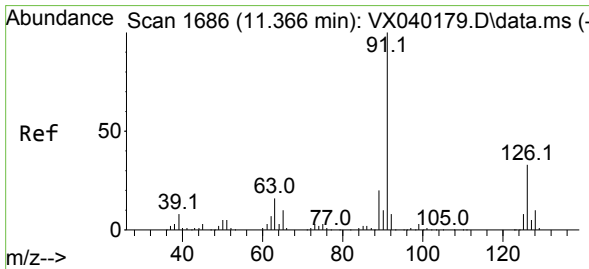
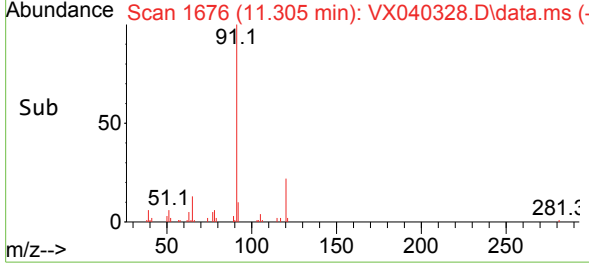
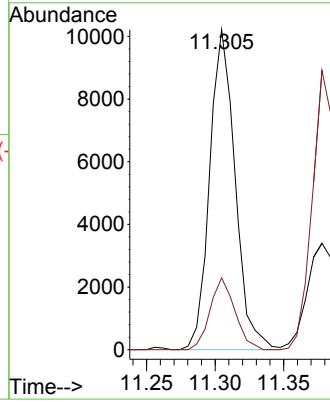


#78
 n-propylbenzene
 Concen: 1.962 ug/l
 RT: 11.305 min Scan# 1676
 Delta R.T. 0.000 min
 Lab File: VX040328.D
 Acq: 19 Feb 2024 14:18

Instrument : MSVOA_X
 ClientSampleId : B-4(4-6)

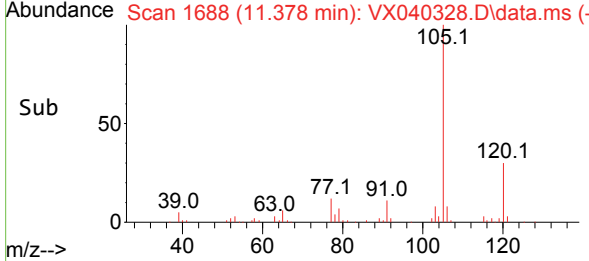
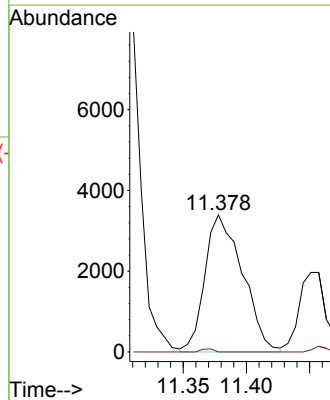
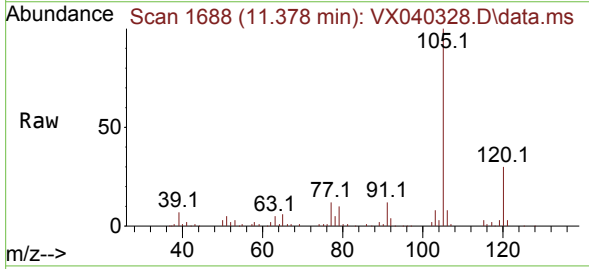


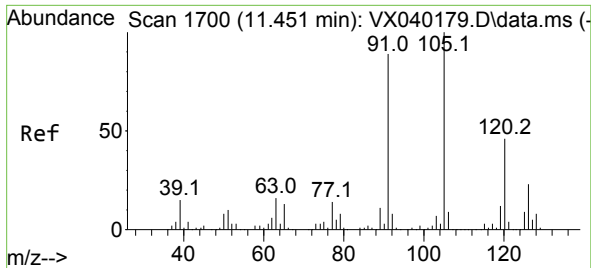
Tgt Ion: 91 Resp: 13199
 Ion Ratio Lower Upper
 91 100
 120 21.8 11.5 34.4



#79
 2-Chlorotoluene
 Concen: 1.734 ug/l
 RT: 11.378 min Scan# 1688
 Delta R.T. 0.012 min
 Lab File: VX040328.D
 Acq: 19 Feb 2024 14:18

Tgt Ion: 91 Resp: 7043
 Ion Ratio Lower Upper
 91 100
 126 0.8 16.3 48.8#

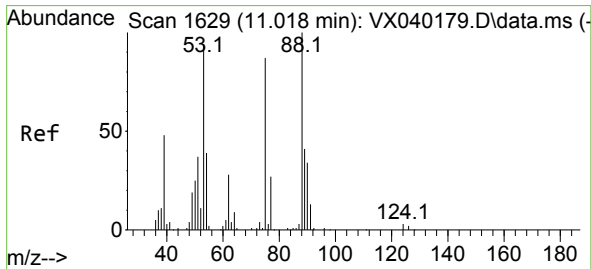
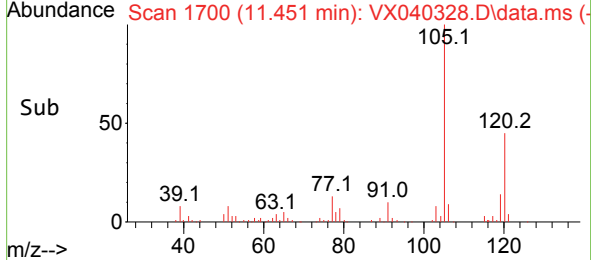
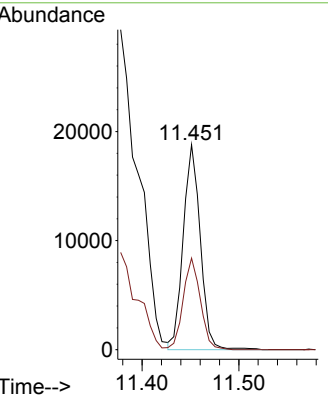
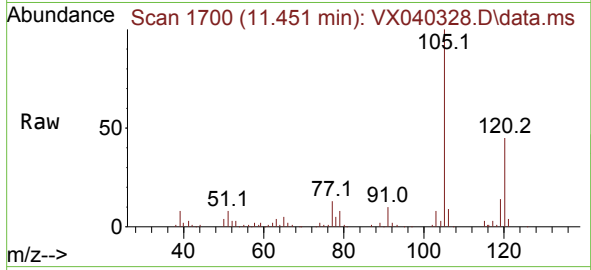




#80
 1,3,5-Trimethylbenzene
 Concen: 4.949 ug/l
 RT: 11.451 min Scan# 11
 Delta R.T. 0.000 min
 Lab File: VX040328.D
 Acq: 19 Feb 2024 14:18

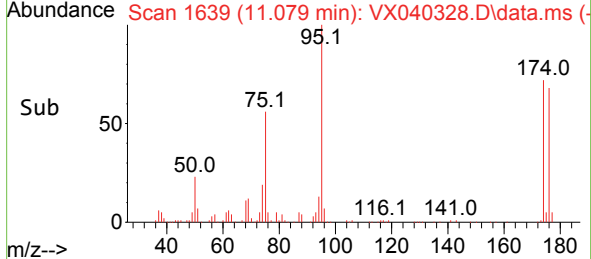
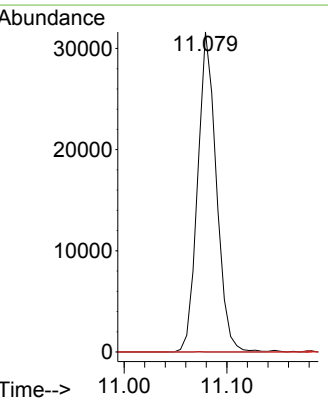
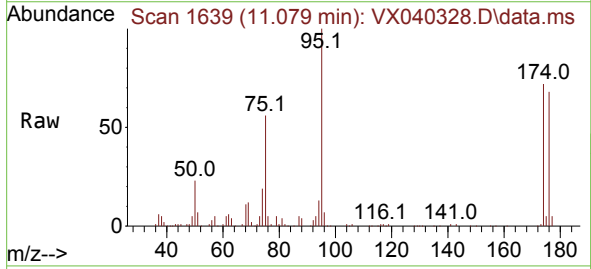
Instrument :
 MSVOA_X
 ClientSampleId :
 B-4(4-6)

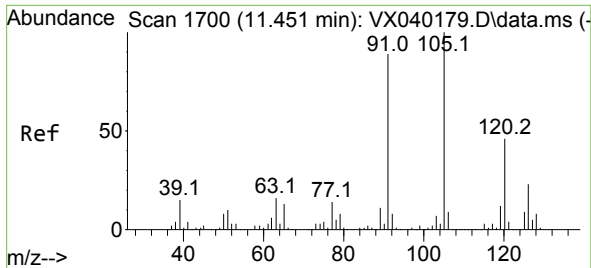
Tgt Ion:105 Resp: 23144
 Ion Ratio Lower Upper
 105 100
 120 45.1 24.1 72.3



#81
 trans-1,4-Dichloro-2-butene
 Concen: 68.915 ug/l
 RT: 11.079 min Scan# 1639
 Delta R.T. 0.061 min
 Lab File: VX040328.D
 Acq: 19 Feb 2024 14:18

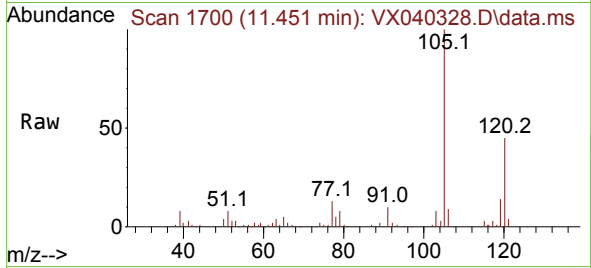
Tgt Ion: 75 Resp: 40020
 Ion Ratio Lower Upper
 75 100
 53 0.0 90.5 135.7#
 89 0.0 36.9 55.3#



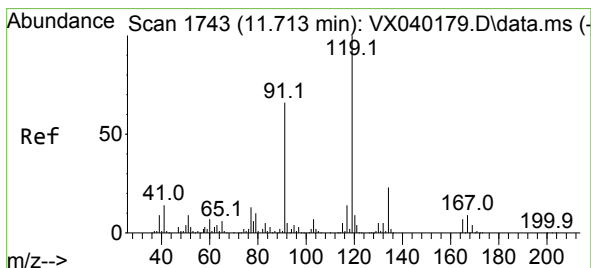
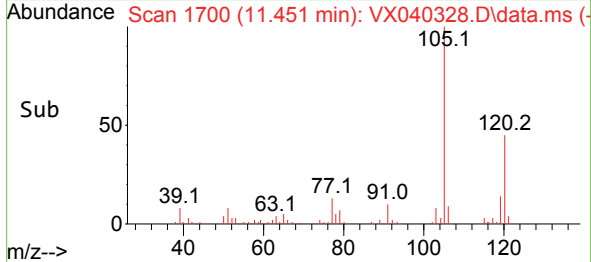
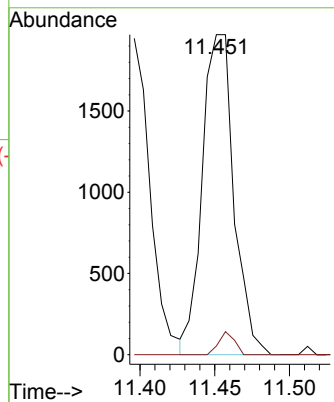


#82
 4-Chlorotoluene
 Concen: 0.603 ug/l
 RT: 11.451 min Scan# 1700
 Delta R.T. 0.000 min
 Lab File: VX040328.D
 Acq: 19 Feb 2024 14:18

Instrument : MSVOA_X
 ClientSampleId : B-4(4-6)

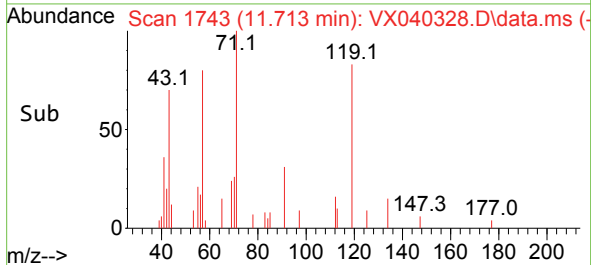
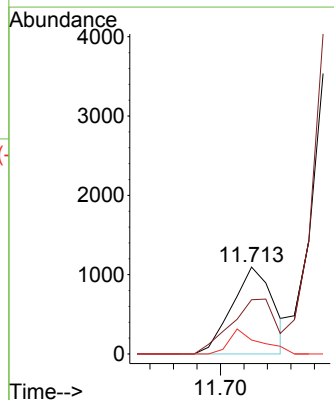
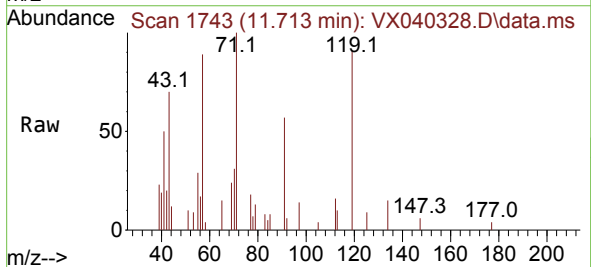


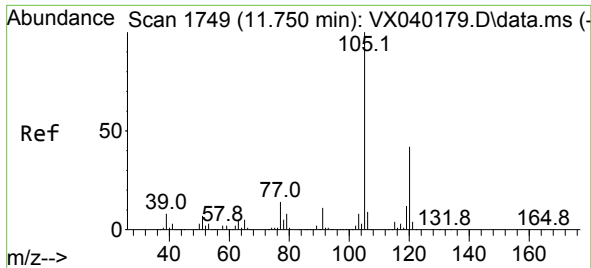
Tgt Ion: 91 Resp: 2900
 Ion Ratio Lower Upper
 91 100
 126 3.6 14.2 42.6#



#83
 tert-Butylbenzene
 Concen: 0.290 ug/l
 RT: 11.713 min Scan# 1743
 Delta R.T. 0.000 min
 Lab File: VX040328.D
 Acq: 19 Feb 2024 14:18

Tgt Ion: 119 Resp: 1332
 Ion Ratio Lower Upper
 119 100
 91 68.0 31.2 93.6
 134 21.3 11.7 35.0

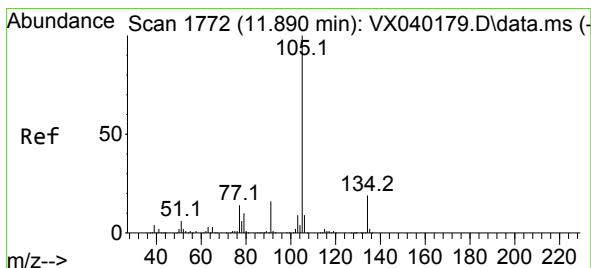
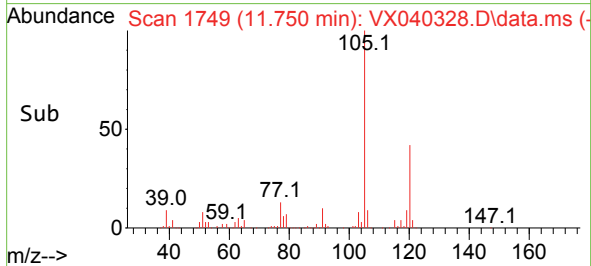
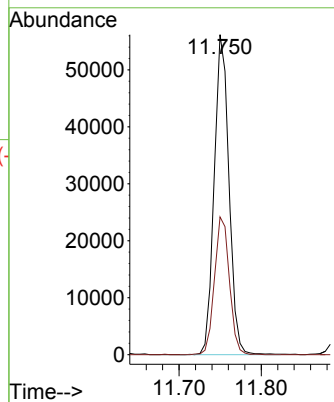
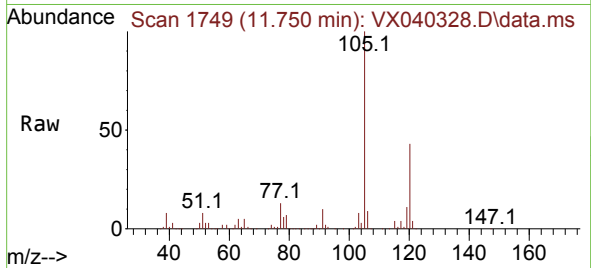




#84
 1,2,4-Trimethylbenzene
 Concen: 14.821 ug/l
 RT: 11.750 min Scan# 1749
 Delta R.T. 0.000 min
 Lab File: VX040328.D
 Acq: 19 Feb 2024 14:18

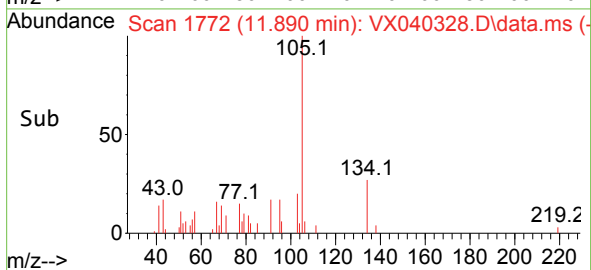
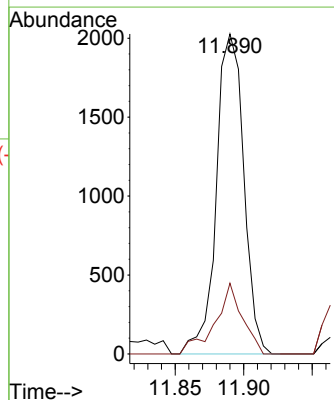
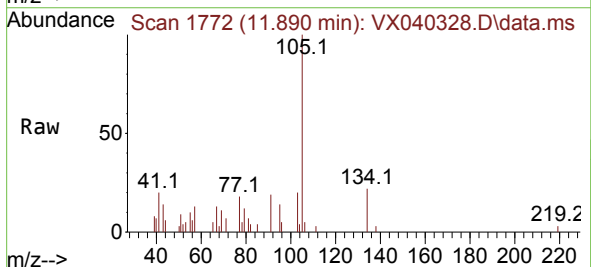
Instrument : MSVOA_X
 ClientSampleId : B-4(4-6)

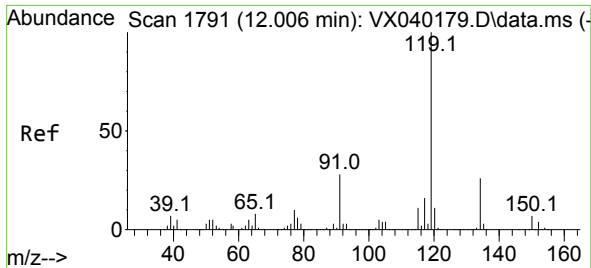
Tgt Ion:105 Resp: 70125
 Ion Ratio Lower Upper
 105 100
 120 43.5 21.2 63.6



#85
 sec-Butylbenzene
 Concen: 0.479 ug/l
 RT: 11.890 min Scan# 1772
 Delta R.T. 0.000 min
 Lab File: VX040328.D
 Acq: 19 Feb 2024 14:18

Tgt Ion:105 Resp: 2825
 Ion Ratio Lower Upper
 105 100
 134 21.9 9.8 29.4



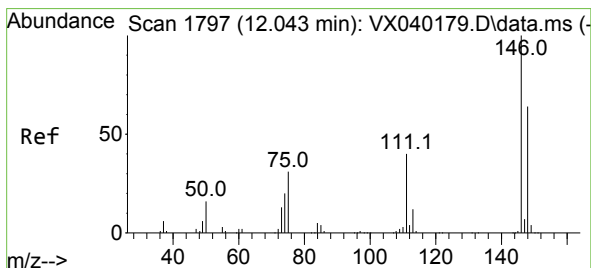
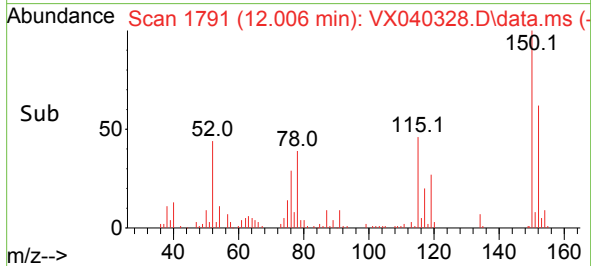
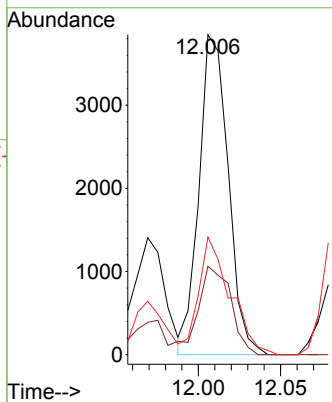
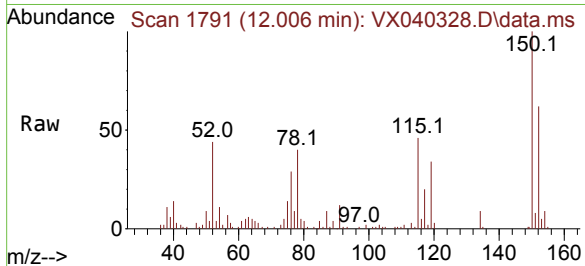


#86
 p-Isopropyltoluene
 Concen: 0.984 ug/l
 RT: 12.006 min Scan# 1791
 Delta R.T. 0.000 min
 Lab File: VX040328.D
 Acq: 19 Feb 2024 14:18

Instrument :
 MSVOA_X
 ClientSampleId :
 B-4(4-6)

Tgt Ion:119 Resp: 4753

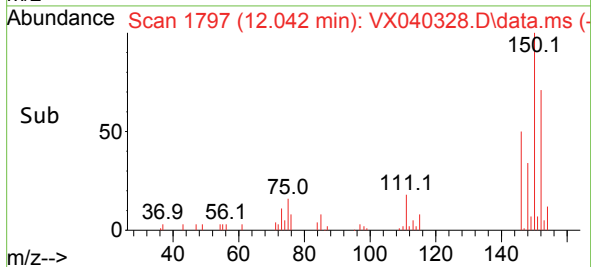
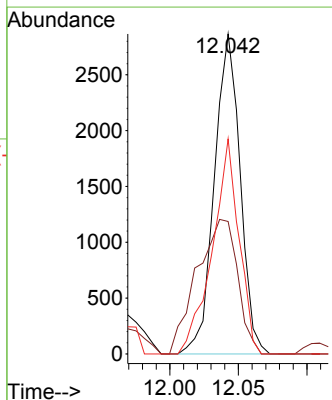
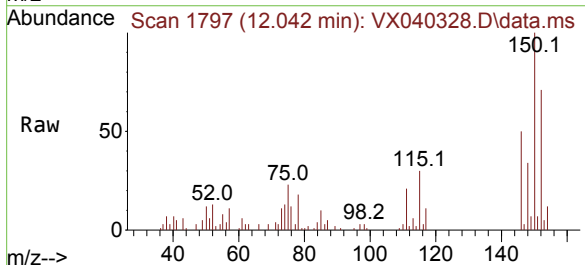
Ion	Ratio	Lower	Upper
119	100		
134	29.0	12.8	38.3
91	40.2	13.1	39.3#

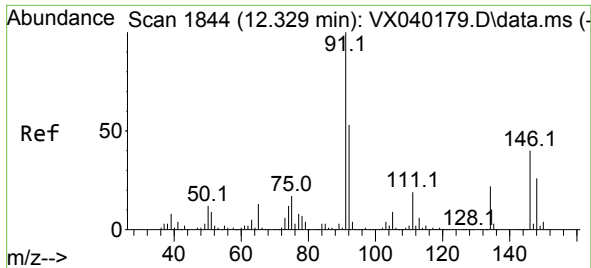


#88
 1,4-Dichlorobenzene
 Concen: 1.361 ug/l
 RT: 12.042 min Scan# 1797
 Delta R.T. 0.000 min
 Lab File: VX040328.D
 Acq: 19 Feb 2024 14:18

Tgt Ion:146 Resp: 3746

Ion	Ratio	Lower	Upper
146	100		
111	66.3	21.3	63.7#
148	69.4	31.8	95.4



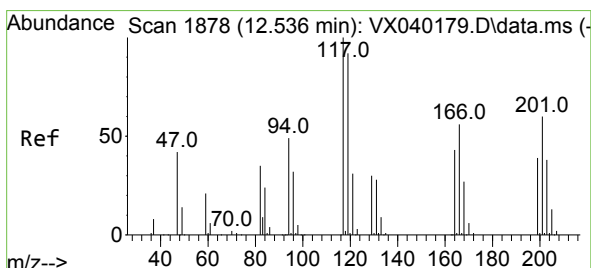
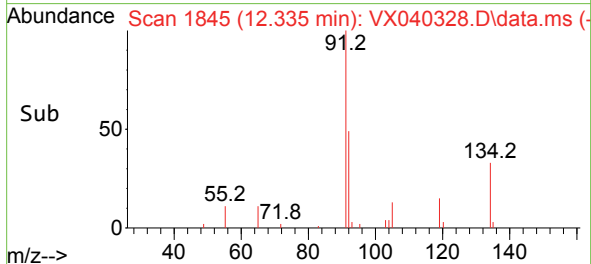
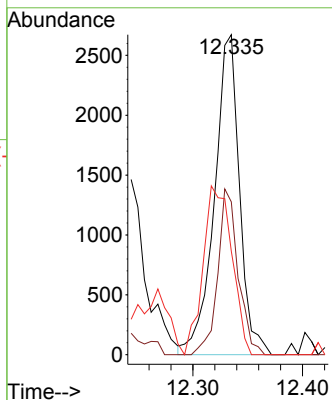
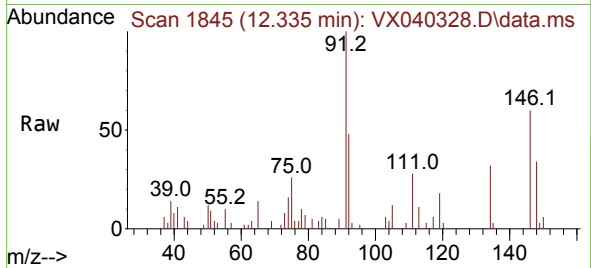


#89
 n-Butylbenzene
 Concen: 0.913 ug/l
 RT: 12.335 min Scan# 1845
 Delta R.T. 0.000 min
 Lab File: VX040328.D
 Acq: 19 Feb 2024 14:18

Instrument : MSVOA_X
 ClientSampleId : B-4(4-6)

Tgt Ion: 91 Resp: 4257

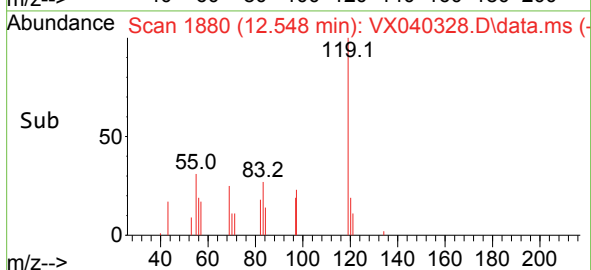
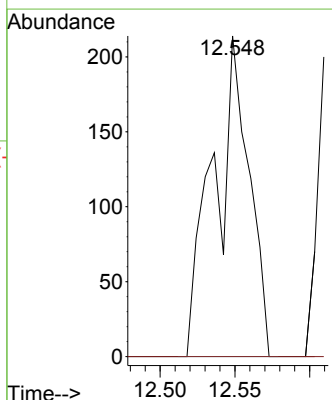
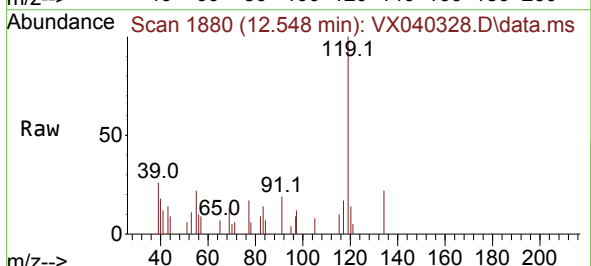
Ion	Ratio	Lower	Upper
91	100		
92	42.3	27.4	82.0
134	60.2	12.6	37.8#

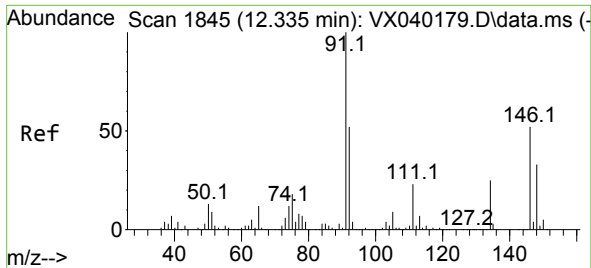


#90
 Hexachloroethane
 Concen: 0.461 ug/l
 RT: 12.548 min Scan# 1880
 Delta R.T. 0.012 min
 Lab File: VX040328.D
 Acq: 19 Feb 2024 14:18

Tgt Ion: 117 Resp: 351

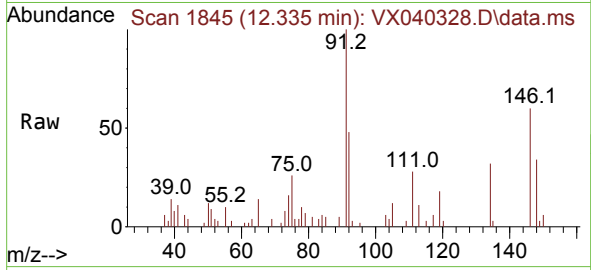
Ion	Ratio	Lower	Upper
117	100		
201	0.0	32.9	98.6#



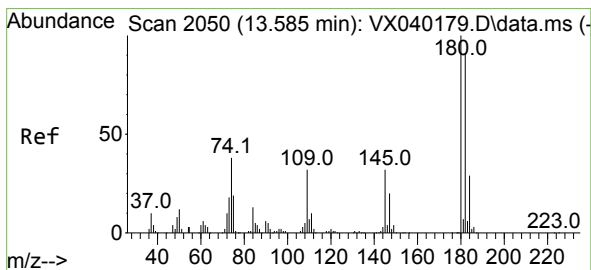
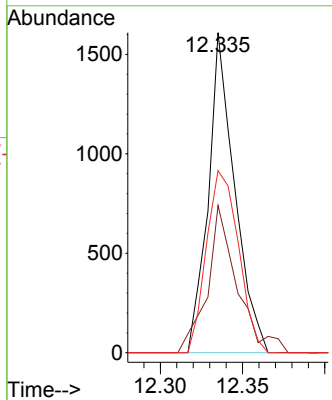
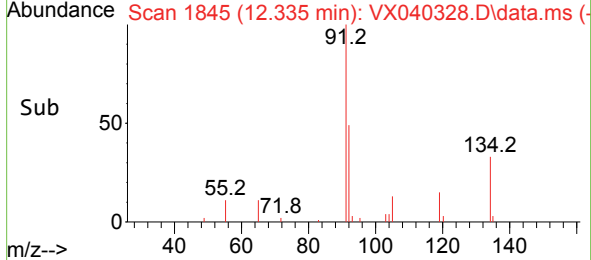


#91
 1,2-Dichlorobenzene
 Concen: 0.714 ug/l
 RT: 12.335 min Scan# 1845
 Delta R.T. 0.000 min
 Lab File: VX040328.D
 Acq: 19 Feb 2024 14:18

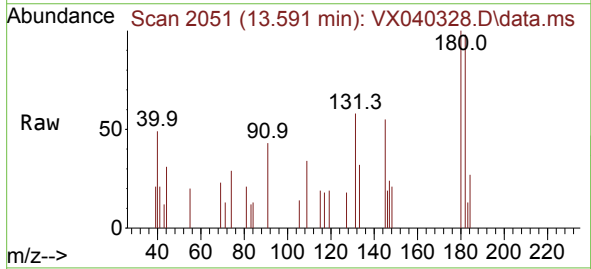
Instrument : MSVOA_X
 ClientSampleId : B-4(4-6)



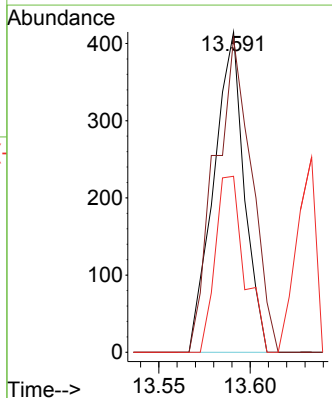
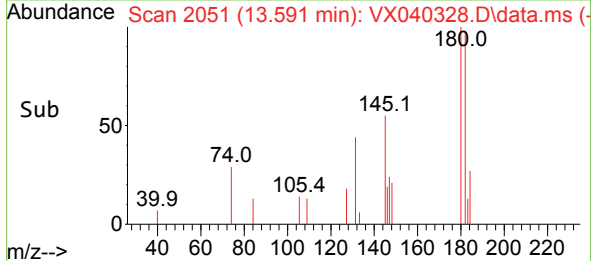
Tgt Ion:146 Resp: 1797
 Ion Ratio Lower Upper
 146 100
 111 51.8 22.4 67.0
 148 69.2 31.6 95.0

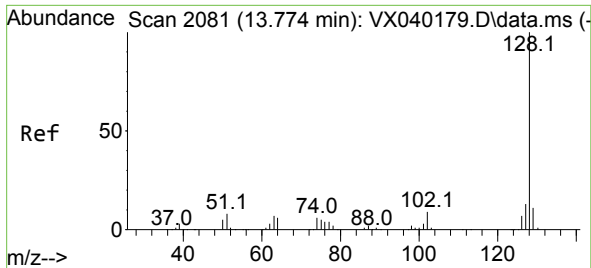


#93
 1,2,4-Trichlorobenzene
 Concen: 0.279 ug/l
 RT: 13.591 min Scan# 2051
 Delta R.T. 0.006 min
 Lab File: VX040328.D
 Acq: 19 Feb 2024 14:18



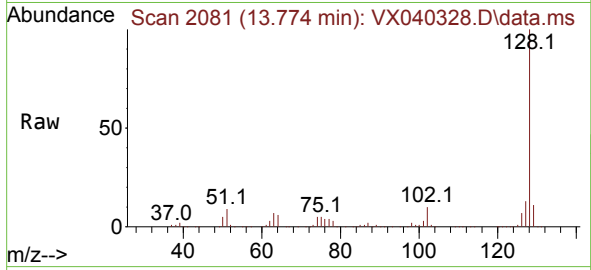
Tgt Ion:180 Resp: 481
 Ion Ratio Lower Upper
 180 100
 182 118.1 48.3 144.8
 145 53.0 18.0 54.0





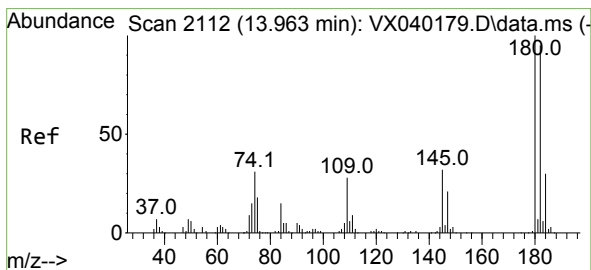
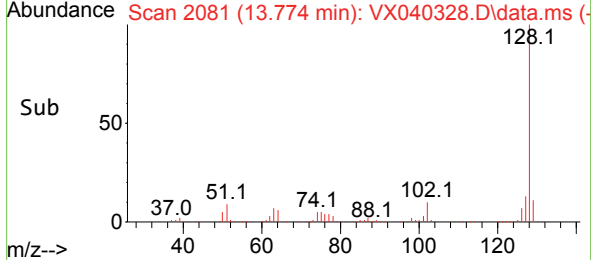
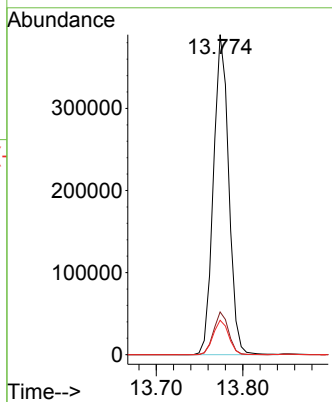
#95
 Naphthalene
 Concen: 88.005 ug/l
 RT: 13.774 min Scan# 2081
 Delta R.T. 0.000 min
 Lab File: VX040328.D
 Acq: 19 Feb 2024 14:18

Instrument : MSVOA_X
 Client Sample Id : B-4(4-6)

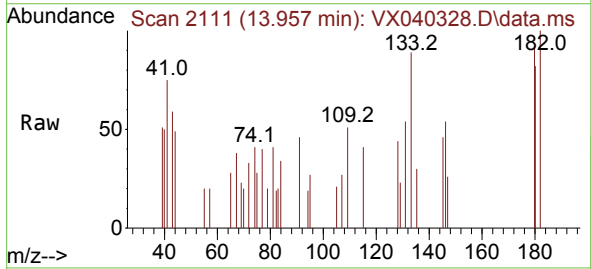


Tgt Ion:128 Resp: 478906

Ion	Ratio	Lower	Upper
128	100		
127	13.1	10.3	15.5
129	11.0	8.8	13.2



#96
 1,2,3-Trichlorobenzene
 Concen: 0.313 ug/l
 RT: 13.957 min Scan# 2111
 Delta R.T. -0.006 min
 Lab File: VX040328.D
 Acq: 19 Feb 2024 14:18



Tgt Ion:180 Resp: 514

Ion	Ratio	Lower	Upper
180	100		
182	119.6	46.9	140.6
145	59.9	17.8	53.5#

