

Data Path : Z:\voasrv\HPCHEM1\MSVOA_X\Data\VX021925\
 Data File : VX044997.D
 Acq On : 19 Feb 2025 11:20
 Operator : JC/MD
 Sample : VX0219MBL01
 Misc : 5.00g/10mL/100uL/5.00mL/MSVOA_X/MEOH
 ALS Vial : 3 Sample Multiplier: 1

Instrument :
 MSVOA_X
 ClientSampleId :

Quant Time: Feb 20 02:34:40 2025
 Quant Method : Z:\voasrv\HPCHEM1\MSVOA_X\Method\82X021025W.M
 Quant Title : SW846 8260
 QLast Update : Tue Feb 11 03:41:08 2025
 Response via : Initial Calibration

Compound	R.T.	QIon	Response	Conc	Units	Dev(Min)

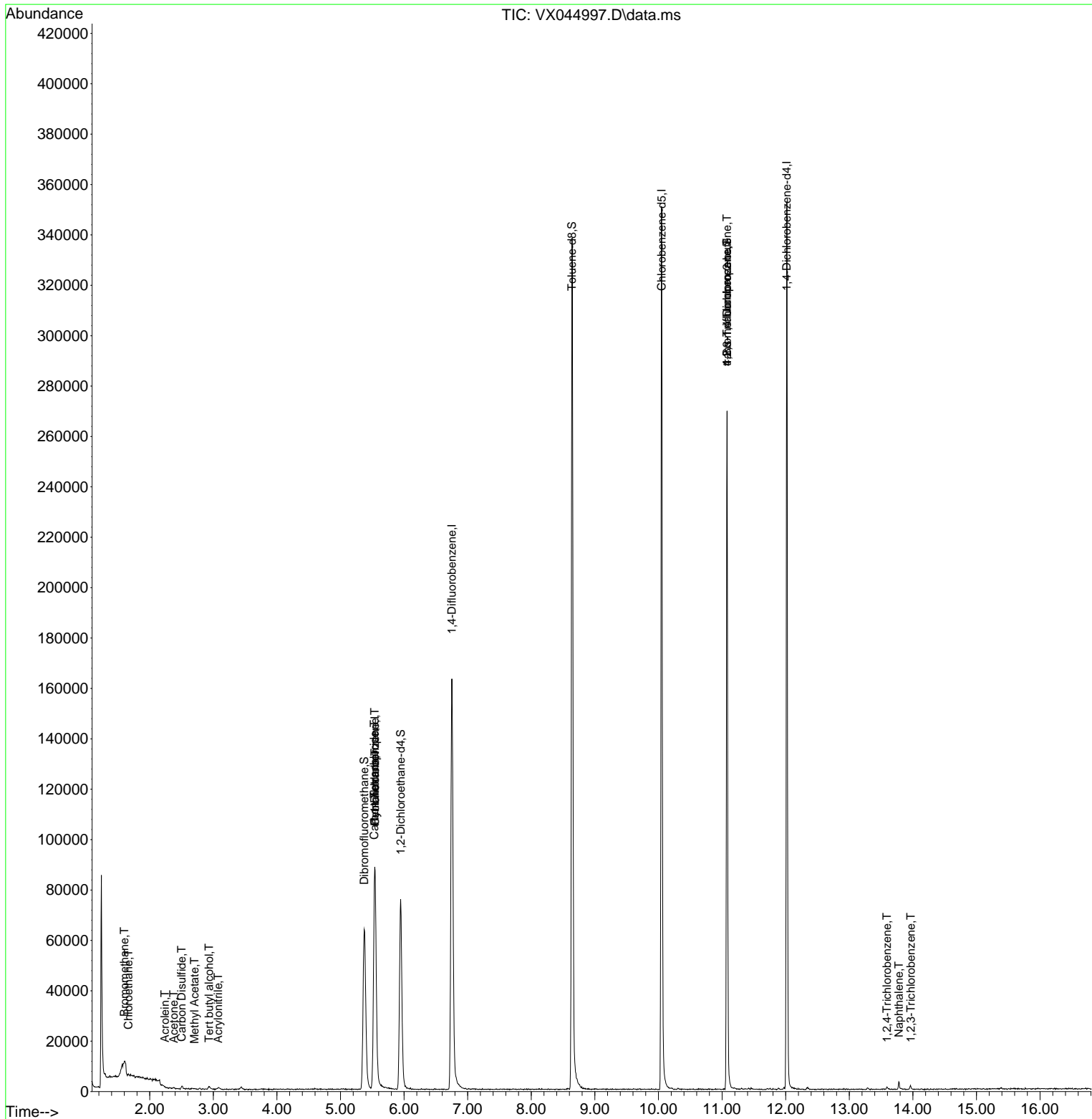
Internal Standards						
1) Pentafluorobenzene	5.544	168	86481	50.000	ug/l	0.00
34) 1,4-Difluorobenzene	6.751	114	174826	50.000	ug/l	0.00
63) Chlorobenzene-d5	10.049	117	155107	50.000	ug/l	0.00
72) 1,4-Dichlorobenzene-d4	12.018	152	66044	50.000	ug/l	0.00
System Monitoring Compounds						
33) 1,2-Dichloroethane-d4	5.946	65	67978	53.698	ug/l	0.00
Spiked Amount	50.000	Range 74 - 125	Recovery	=	107.400%	
35) Dibromofluoromethane	5.373	113	57678	50.743	ug/l	0.00
Spiked Amount	50.000	Range 75 - 124	Recovery	=	101.480%	
50) Toluene-d8	8.641	98	213412	49.652	ug/l	0.00
Spiked Amount	50.000	Range 86 - 113	Recovery	=	99.300%	
62) 4-Bromofluorobenzene	11.079	95	72583	50.092	ug/l	0.00
Spiked Amount	50.000	Range 77 - 121	Recovery	=	100.180%	
Target Compounds						
						Qvalue
5) Bromomethane	1.599	94	226	0.528	ug/l #	63
6) Chloroethane	1.666	64	3463	6.421	ug/l #	49
11) Tert butyl alcohol	2.934	59	593	2.525	ug/l #	73
13) Acrolein	2.239	56	263	1.085	ug/l #	58
15) Acrylonitrile	3.075	53	386	0.616	ug/l #	75
16) Acetone	2.380	43	511	1.004	ug/l #	85
17) Carbon Disulfide	2.501	76	1489	0.487	ug/l #	95
18) Methyl Acetate	2.703	43	352	0.219	ug/l #	52
31) Cyclohexane	5.544	56	2169	1.103	ug/l #	11
36) 1,1-Dichloropropene	5.538	75	7376	4.498	ug/l #	52
38) Carbon Tetrachloride	5.531	117	9107	5.667	ug/l #	18
76) 1,2,3-Trichloropropane	11.079	75	39192	26.765	ug/l #	34
81) trans-1,4-Dichloro-2-b...	11.079	75	39192	68.850	ug/l #	11
93) 1,2,4-Trichlorobenzene	13.591	180	533	0.404	ug/l #	84
95) Naphthalene	13.780	128	2454	0.515	ug/l	98
96) 1,2,3-Trichlorobenzene	13.969	180	690	0.519	ug/l	87

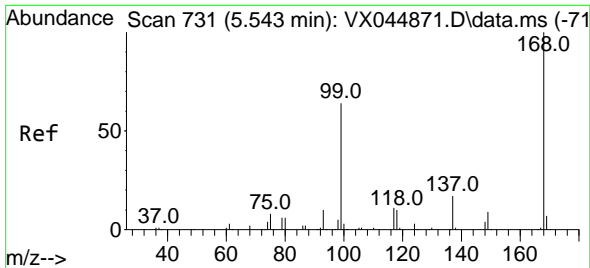
(#) = qualifier out of range (m) = manual integration (+) = signals summed

Data Path : Z:\voasrv\HPCHEM1\MSVOA_X\Data\VX021925\
 Data File : VX044997.D
 Acq On : 19 Feb 2025 11:20
 Operator : JC/MD
 Sample : VX0219MBL01
 Misc : 5.00g/10mL/100uL/5.00mL/MSVOA_X/MEOH
 ALS Vial : 3 Sample Multiplier: 1

Instrument :
 MSVOA_X
 ClientSampleId :

Quant Time: Feb 20 02:34:40 2025
 Quant Method : Z:\voasrv\HPCHEM1\MSVOA_X\Method\82X021025W.M
 Quant Title : SW846 8260
 QLast Update : Tue Feb 11 03:41:08 2025
 Response via : Initial Calibration

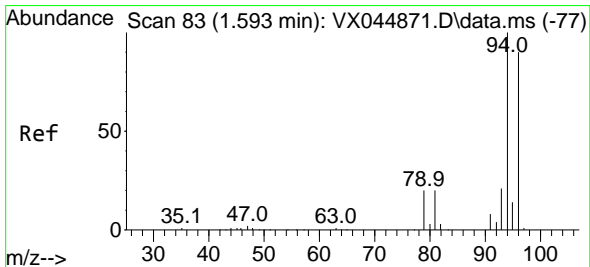
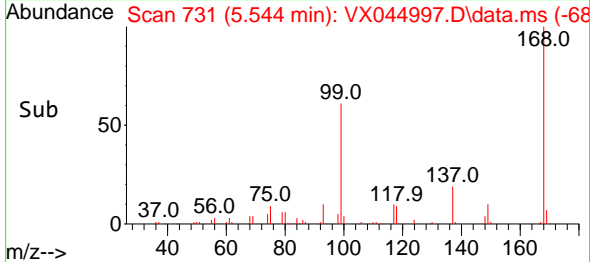
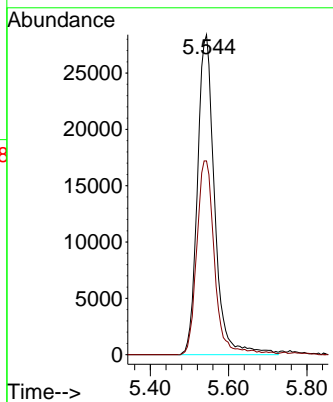
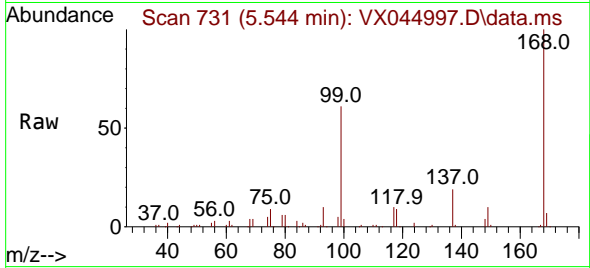




#1
 Pentafluorobenzene
 Concen: 50.000 ug/l
 RT: 5.544 min Scan# 71
 Delta R.T. 0.001 min
 Lab File: VX044997.D
 Acq: 19 Feb 2025 11:20

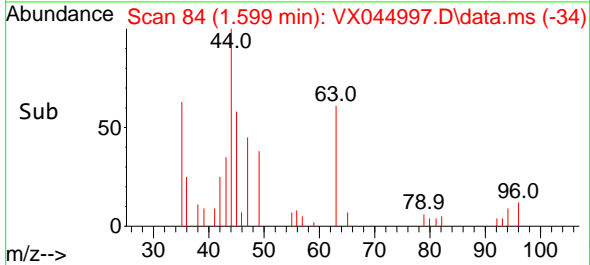
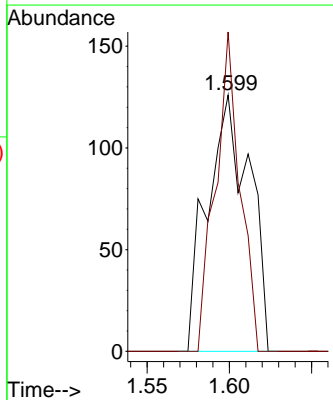
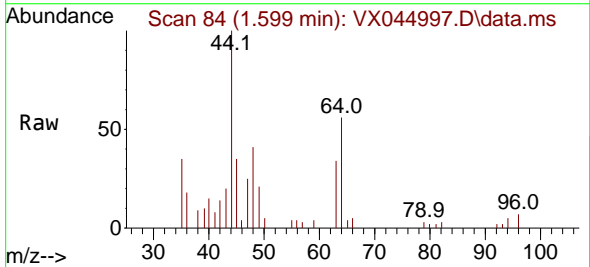
Instrument :
 MSVOA_X
 ClientSampleId :

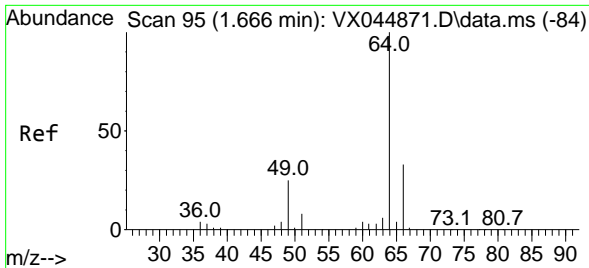
Tgt Ion:168 Resp: 86481
 Ion Ratio Lower Upper
 168 100
 99 60.6 51.2 76.8



#5
 Bromomethane
 Concen: 0.528 ug/l
 RT: 1.599 min Scan# 84
 Delta R.T. 0.006 min
 Lab File: VX044997.D
 Acq: 19 Feb 2025 11:20

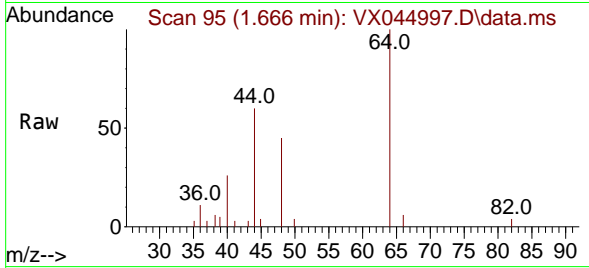
Tgt Ion: 94 Resp: 226
 Ion Ratio Lower Upper
 94 100
 96 124.6 71.6 107.4#



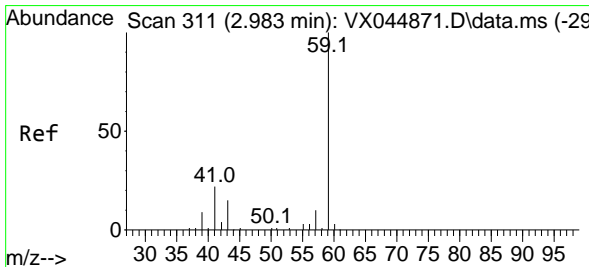
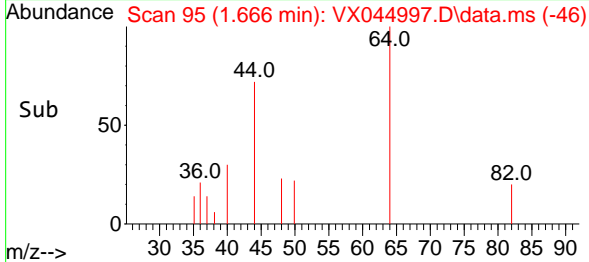
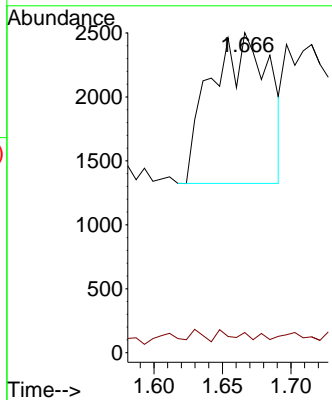


#6
 Chloroethane
 Concen: 6.421 ug/l
 RT: 1.666 min Scan# 91
 Delta R.T. 0.000 min
 Lab File: VX044997.D
 Acq: 19 Feb 2025 11:20

Instrument :
 MSVOA_X
 ClientSampleId :

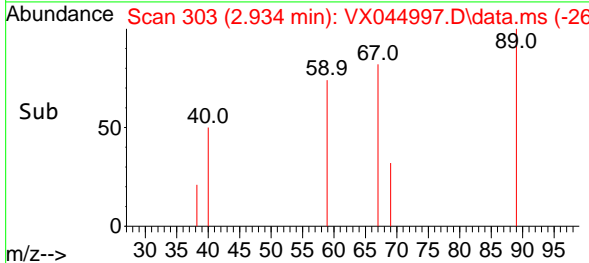
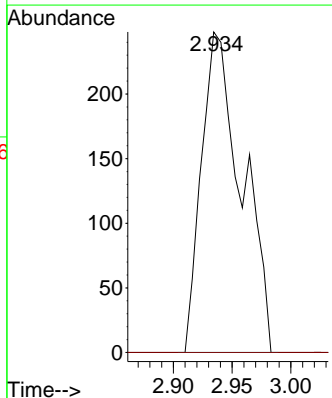
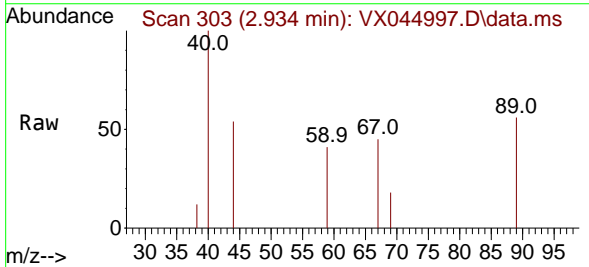


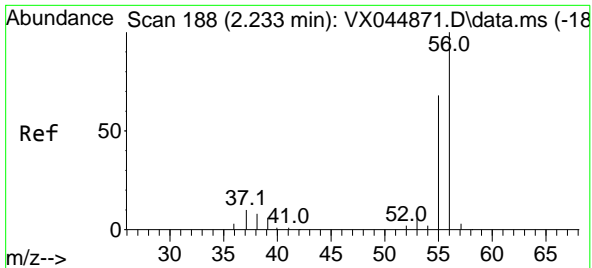
Tgt Ion: 64 Resp: 3463
 Ion Ratio Lower Upper
 64 100
 66 4.1 25.9 38.9#



#11
 Tert butyl alcohol
 Concen: 2.525 ug/l
 RT: 2.934 min Scan# 303
 Delta R.T. -0.048 min
 Lab File: VX044997.D
 Acq: 19 Feb 2025 11:20

Tgt Ion: 59 Resp: 593
 Ion Ratio Lower Upper
 59 100
 57 0.0 8.1 12.1#

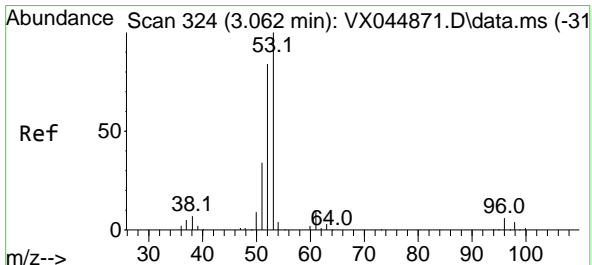
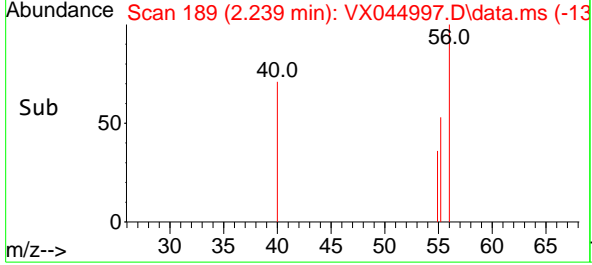
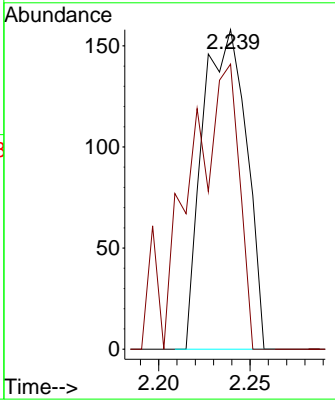
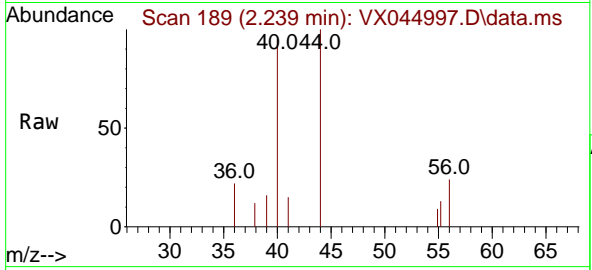




#13
 Acrolein
 Concen: 1.085 ug/l
 RT: 2.239 min Scan# 11
 Delta R.T. 0.006 min
 Lab File: VX044997.D
 Acq: 19 Feb 2025 11:20

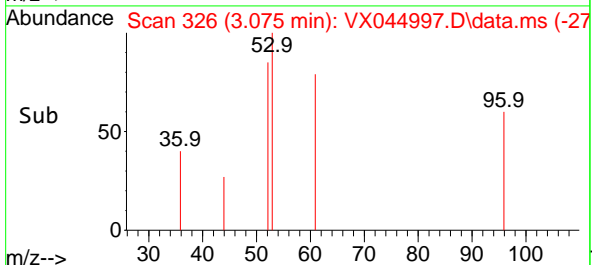
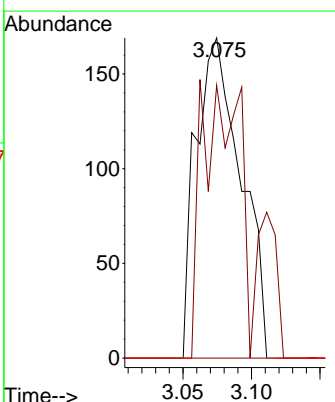
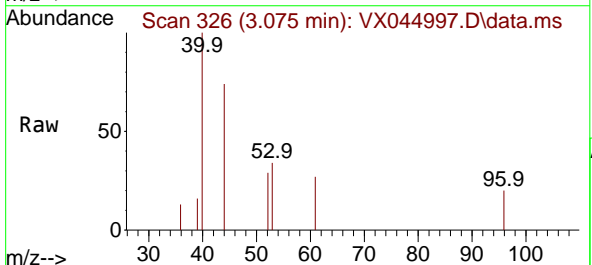
Instrument : MSVOA_X
 ClientSampleId :

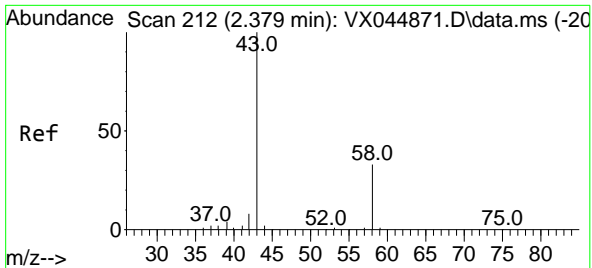
Tgt Ion: 56 Resp: 263
 Ion Ratio Lower Upper
 56 100
 55 104.2 55.7 83.5#



#15
 Acrylonitrile
 Concen: 0.616 ug/l
 RT: 3.075 min Scan# 326
 Delta R.T. 0.012 min
 Lab File: VX044997.D
 Acq: 19 Feb 2025 11:20

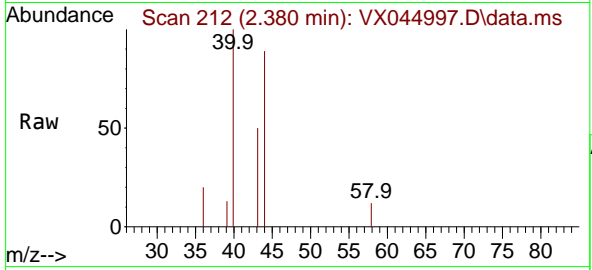
Tgt Ion: 53 Resp: 386
 Ion Ratio Lower Upper
 53 100
 52 72.0 65.0 97.6
 51 0.0 28.0 42.0#



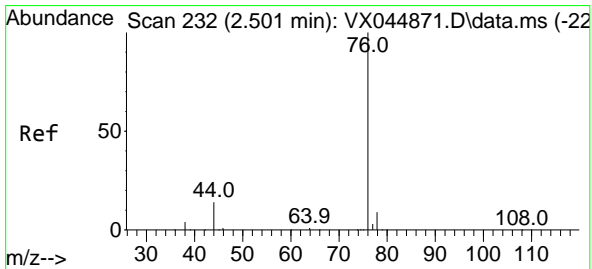
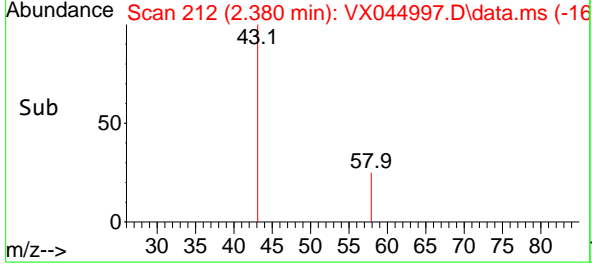
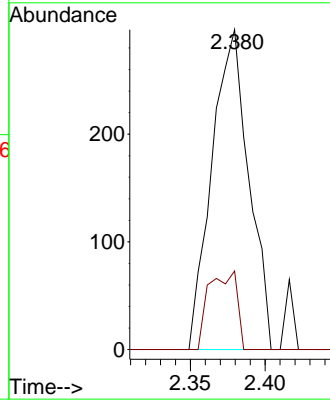


#16
 Acetone
 Concen: 1.004 ug/l
 RT: 2.380 min Scan# 211
 Delta R.T. 0.000 min
 Lab File: VX044997.D
 Acq: 19 Feb 2025 11:20

Instrument : MSVOA_X
 ClientSampleId :

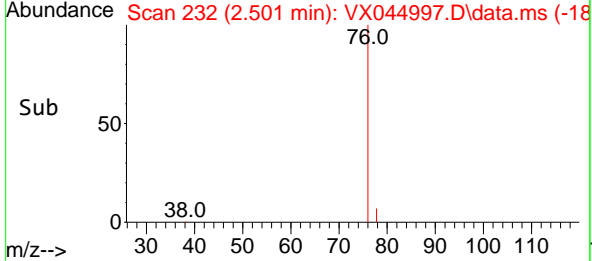
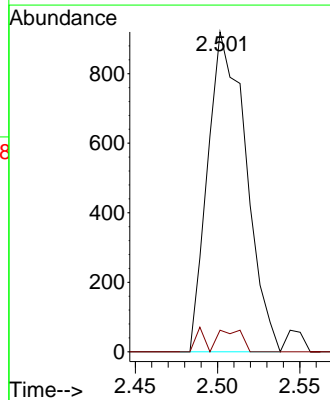
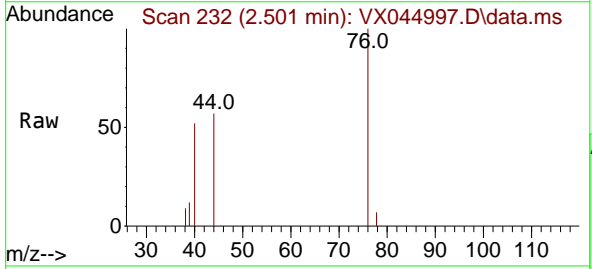


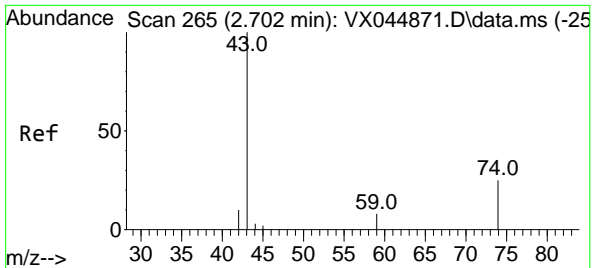
Tgt Ion: 43 Resp: 511
 Ion Ratio Lower Upper
 43 100
 58 24.6 26.5 39.7#



#17
 Carbon Disulfide
 Concen: 0.487 ug/l
 RT: 2.501 min Scan# 232
 Delta R.T. 0.000 min
 Lab File: VX044997.D
 Acq: 19 Feb 2025 11:20

Tgt Ion: 76 Resp: 1489
 Ion Ratio Lower Upper
 76 100
 78 6.7 7.0 10.4#

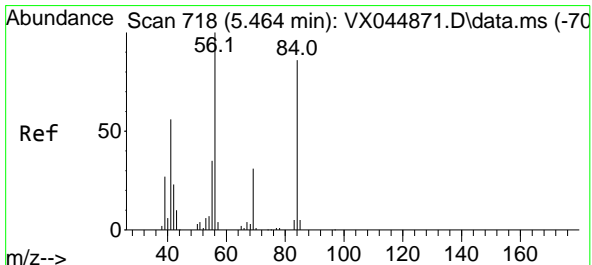
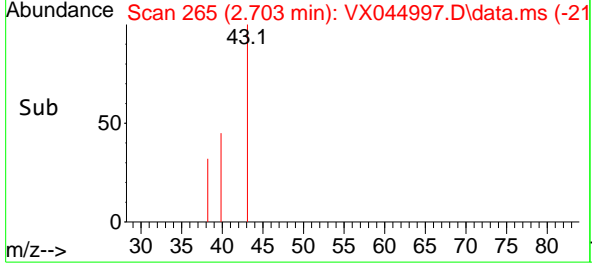
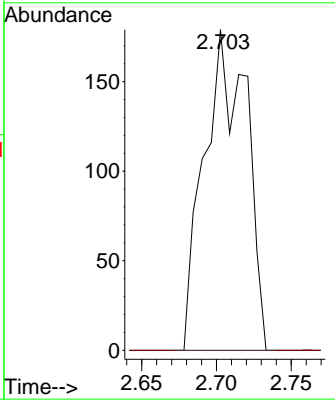
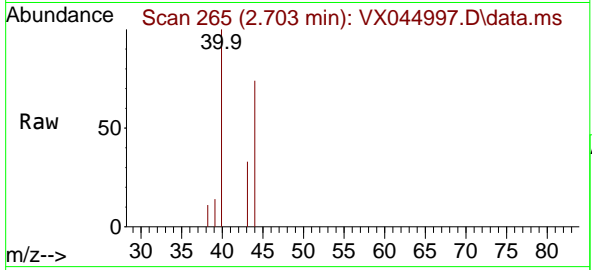




#18
 Methyl Acetate
 Concen: 0.219 ug/l
 RT: 2.703 min Scan# 20
 Delta R.T. 0.000 min
 Lab File: VX044997.D
 Acq: 19 Feb 2025 11:20

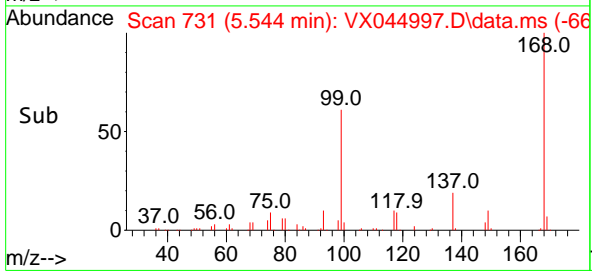
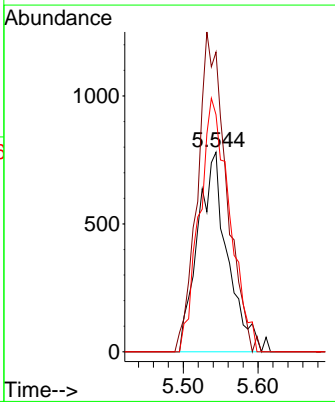
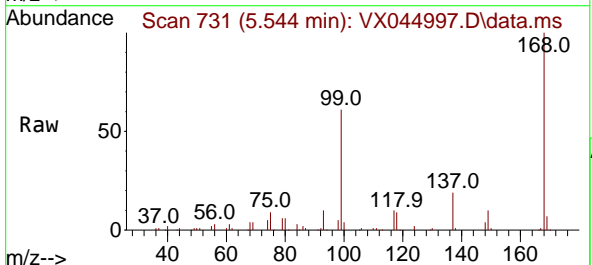
Instrument : MSVOA_X
 ClientSampleId :

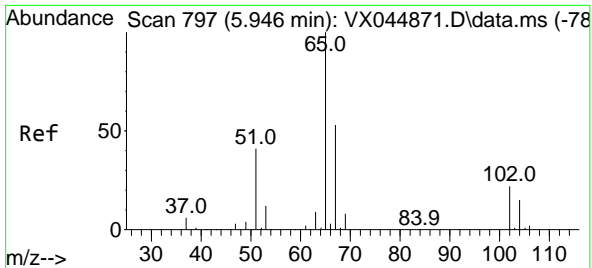
Tgt Ion	Resp	Lower	Upper
43	100		
74	0.0	18.9	28.3#



#31
 Cyclohexane
 Concen: 1.103 ug/l
 RT: 5.544 min Scan# 731
 Delta R.T. 0.080 min
 Lab File: VX044997.D
 Acq: 19 Feb 2025 11:20

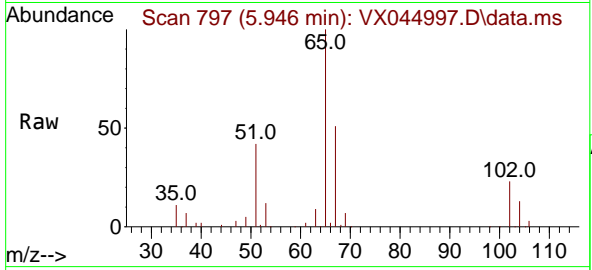
Tgt Ion	Resp	Lower	Upper
56	100		
69	150.1	24.4	36.6#
84	125.8	69.0	103.6#



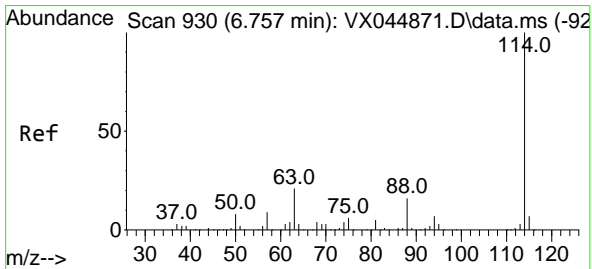
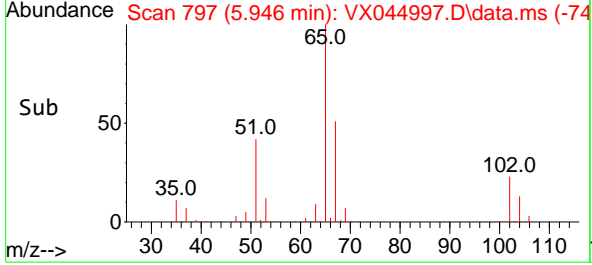
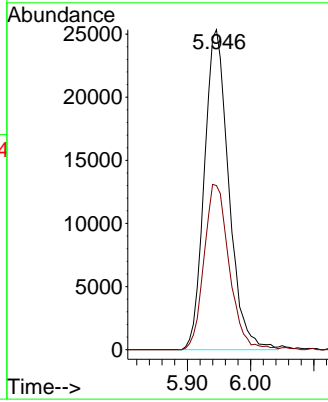


#33
 1,2-Dichloroethane-d4
 Concen: 53.698 ug/l
 RT: 5.946 min Scan# 797
 Delta R.T. 0.000 min
 Lab File: VX044997.D
 Acq: 19 Feb 2025 11:20

Instrument :
 MSVOA_X
 ClientSampleId :

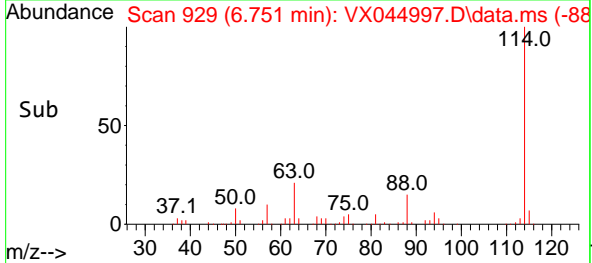
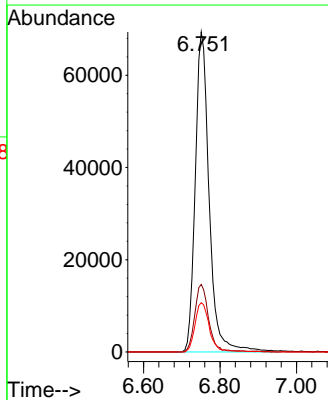
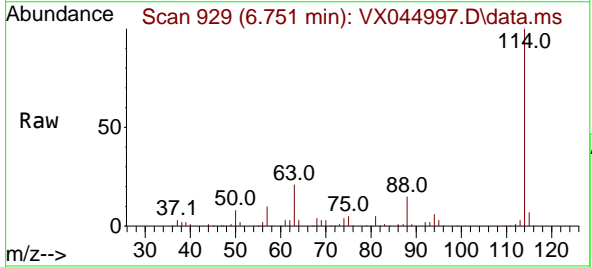


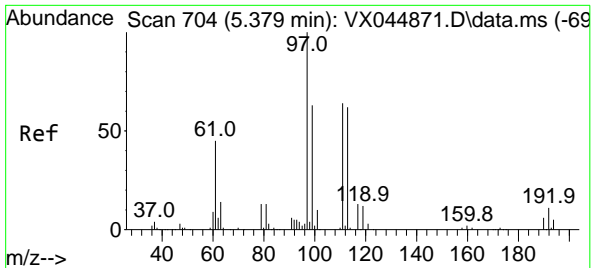
Tgt Ion: 65 Resp: 67978
 Ion Ratio Lower Upper
 65 100
 67 53.1 0.0 108.2



#34
 1,4-Difluorobenzene
 Concen: 50.000 ug/l
 RT: 6.751 min Scan# 929
 Delta R.T. -0.006 min
 Lab File: VX044997.D
 Acq: 19 Feb 2025 11:20

Tgt Ion: 114 Resp: 174826
 Ion Ratio Lower Upper
 114 100
 63 21.1 0.0 42.4
 88 15.4 0.0 31.4

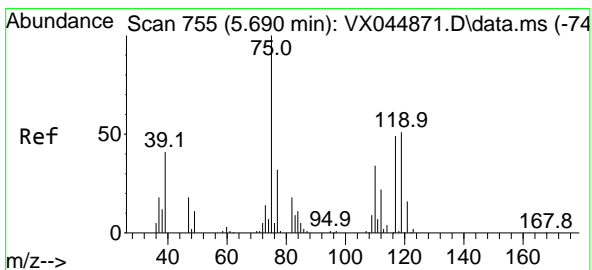
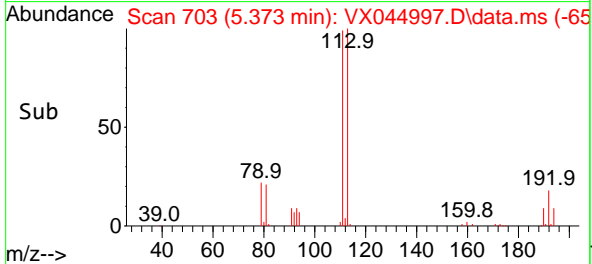
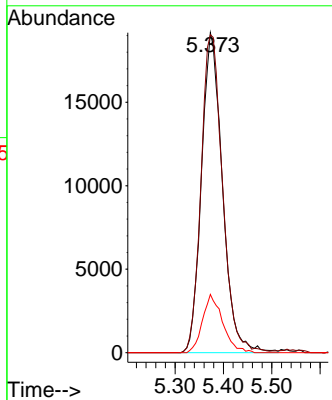
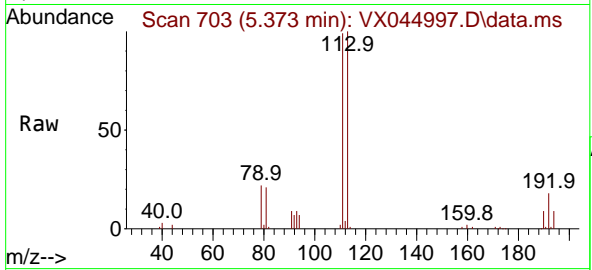




#35
 Dibromofluoromethane
 Concen: 50.743 ug/l
 RT: 5.373 min Scan# 703
 Delta R.T. -0.006 min
 Lab File: VX044997.D
 Acq: 19 Feb 2025 11:20

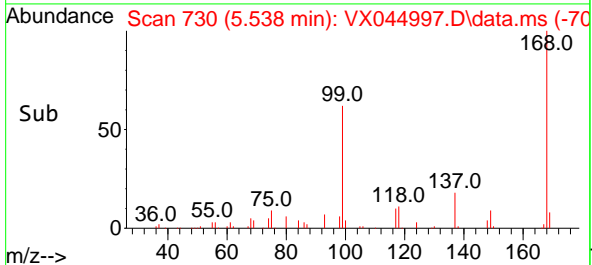
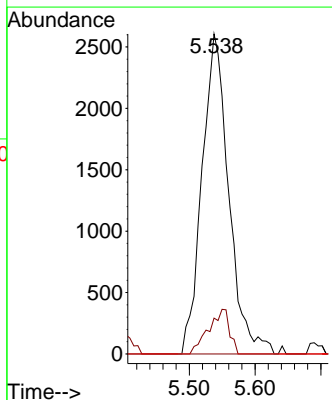
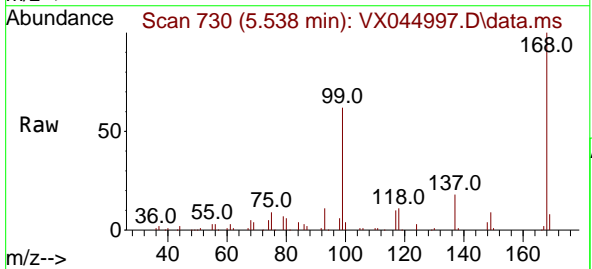
Instrument : MSVOA_X
 ClientSampleId :

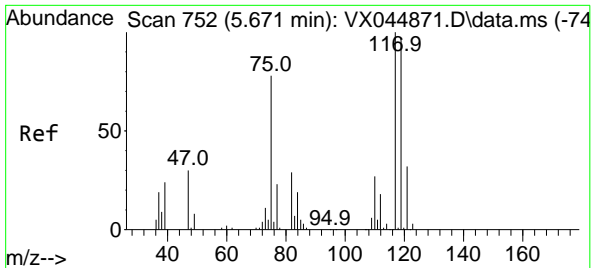
Tgt Ion	Resp	Lower	Upper
113	57678		
113	100		
111	101.8	83.5	125.3
192	17.5	14.4	21.6



#36
 1,1-Dichloropropene
 Concen: 4.498 ug/l
 RT: 5.538 min Scan# 730
 Delta R.T. -0.152 min
 Lab File: VX044997.D
 Acq: 19 Feb 2025 11:20

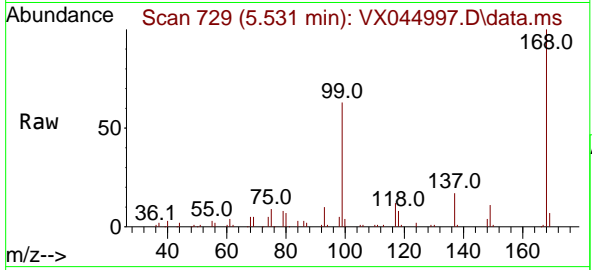
Tgt Ion	Resp	Lower	Upper
75	7376		
75	100		
110	10.9	17.2	51.6#
77	0.0	24.6	37.0#



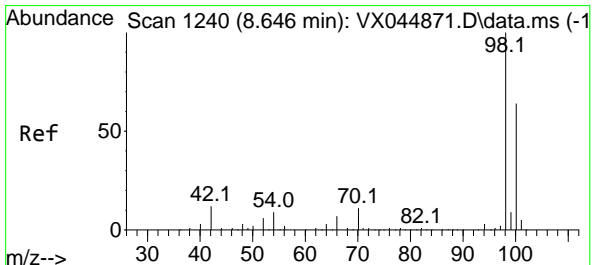
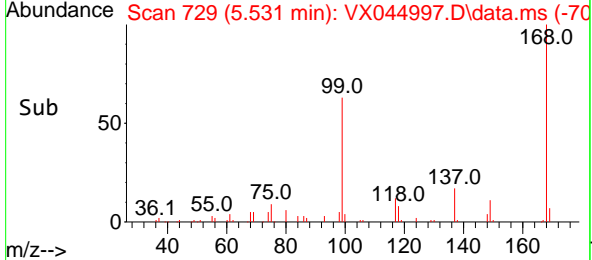
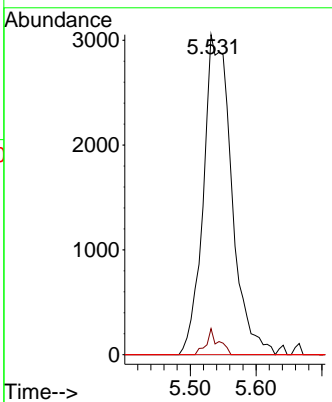


#38
 Carbon Tetrachloride
 Concen: 5.667 ug/l
 RT: 5.531 min Scan# 71
 Delta R.T. -0.140 min
 Lab File: VX044997.D
 Acq: 19 Feb 2025 11:20

Instrument : MSVOA_X
 ClientSampleId :

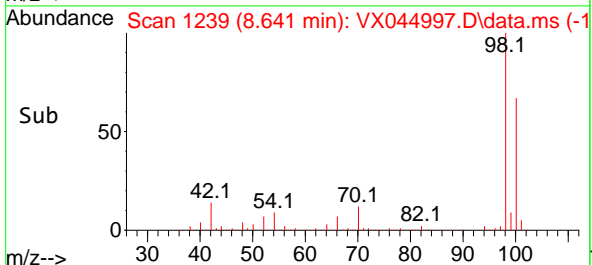
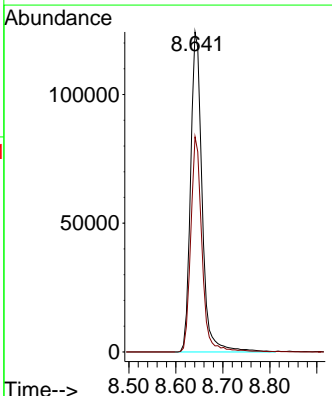
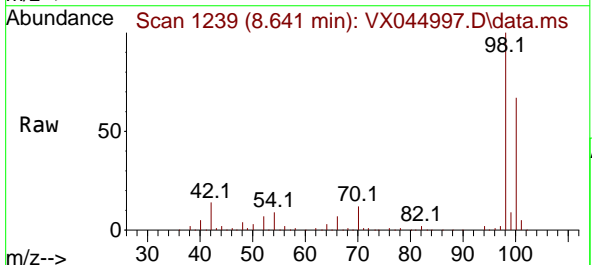


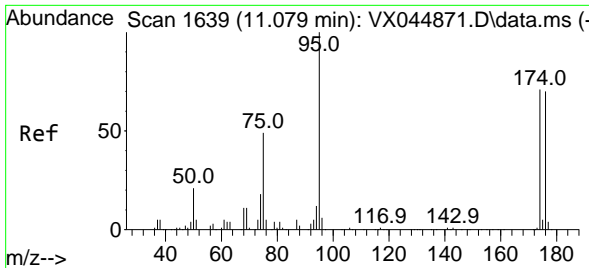
Tgt Ion: 117 Resp: 9107
 Ion Ratio Lower Upper
 117 100
 119 8.1 77.5 116.3#
 121 0.0 25.6 38.4#



#50
 Toluene-d8
 Concen: 49.652 ug/l
 RT: 8.641 min Scan# 1239
 Delta R.T. -0.006 min
 Lab File: VX044997.D
 Acq: 19 Feb 2025 11:20

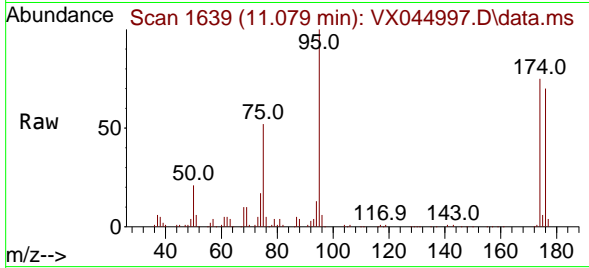
Tgt Ion: 98 Resp: 213412
 Ion Ratio Lower Upper
 98 100
 100 65.4 52.7 79.1



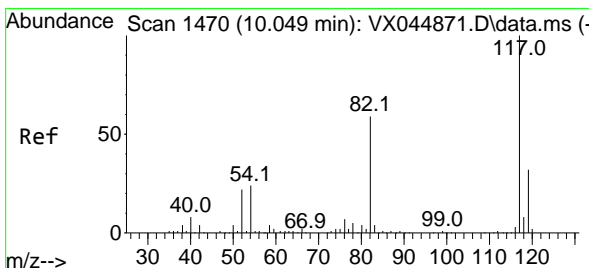
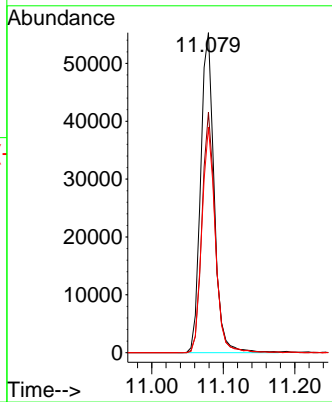
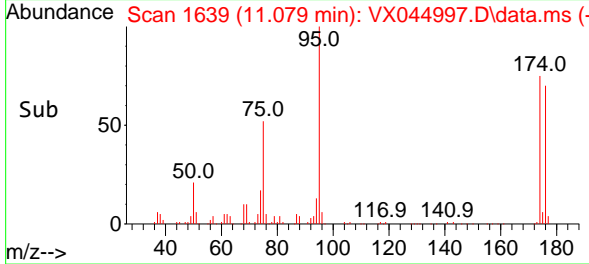


#62
 4-Bromofluorobenzene
 Concen: 50.092 ug/l
 RT: 11.079 min Scan# 1639
 Delta R.T. 0.000 min
 Lab File: VX044997.D
 Acq: 19 Feb 2025 11:20

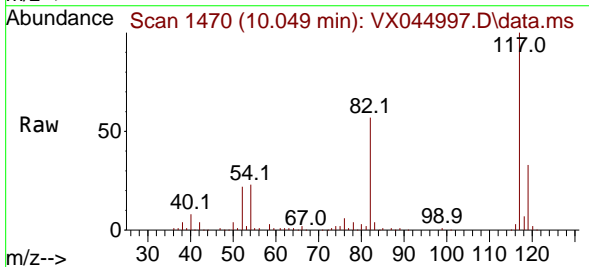
Instrument :
 MSVOA_X
 ClientSampleId :



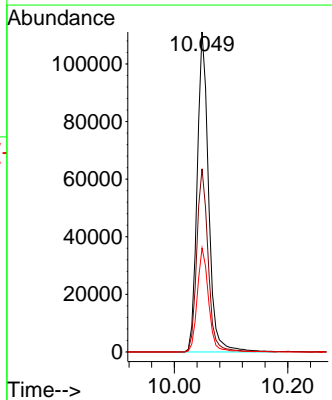
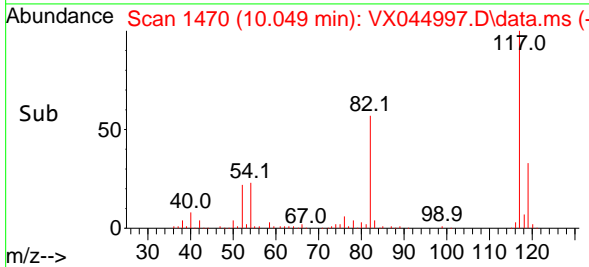
Tgt Ion: 95 Resp: 72583
 Ion Ratio Lower Upper
 95 100
 174 73.1 0.0 142.6
 176 70.3 0.0 141.6

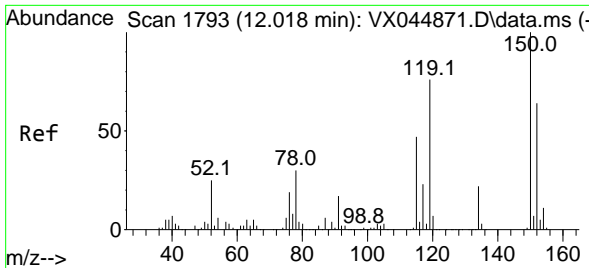


#63
 Chlorobenzene-d5
 Concen: 50.000 ug/l
 RT: 10.049 min Scan# 1470
 Delta R.T. 0.000 min
 Lab File: VX044997.D
 Acq: 19 Feb 2025 11:20



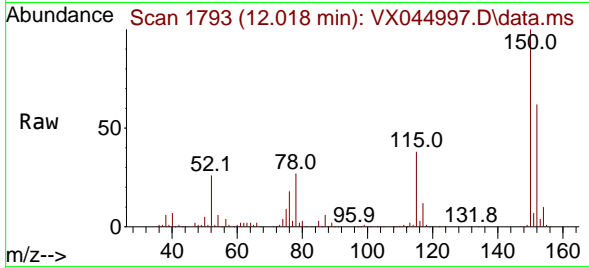
Tgt Ion: 117 Resp: 155107
 Ion Ratio Lower Upper
 117 100
 82 57.3 47.5 71.3
 119 32.5 25.4 38.0



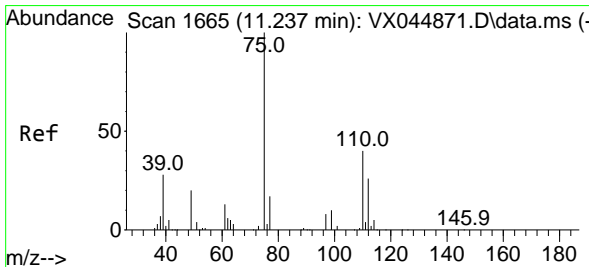
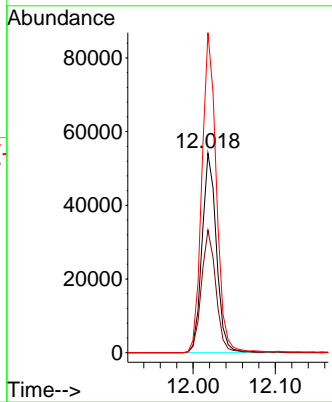
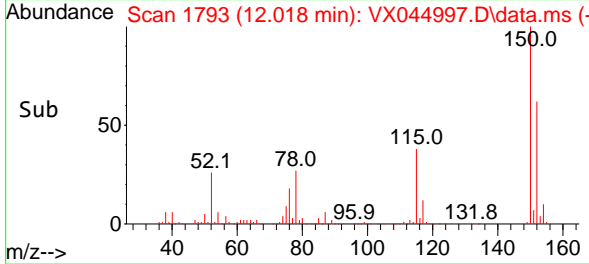


#72
 1,4-Dichlorobenzene-d4
 Concen: 50.000 ug/l
 RT: 12.018 min Scan# 1
 Delta R.T. 0.000 min
 Lab File: VX044997.D
 Acq: 19 Feb 2025 11:20

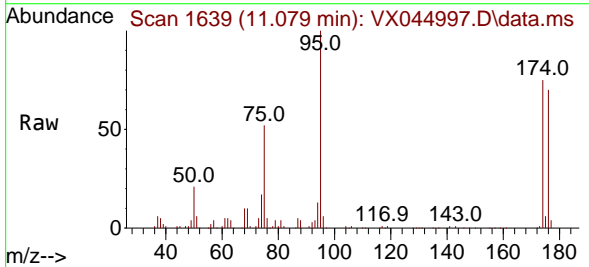
Instrument :
 MSVOA_X
 ClientSampleId :



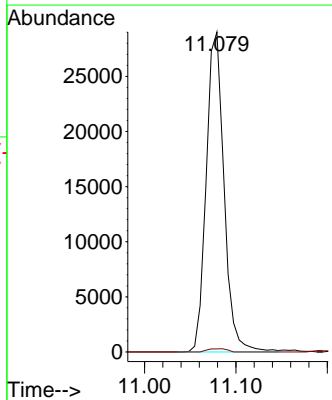
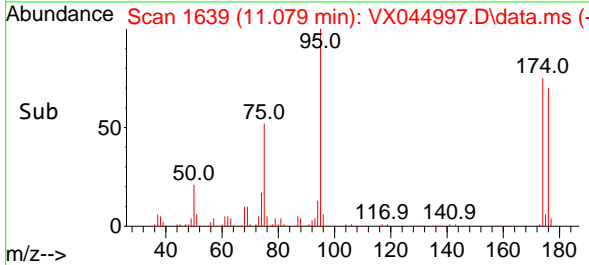
Tgt Ion:152 Resp: 66044
 Ion Ratio Lower Upper
 152 100
 115 61.7 43.4 130.1
 150 160.6 0.0 350.4

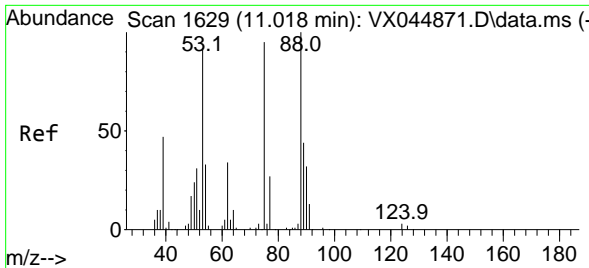


#76
 1,2,3-Trichloropropane
 Concen: 26.765 ug/l
 RT: 11.079 min Scan# 1639
 Delta R.T. -0.158 min
 Lab File: VX044997.D
 Acq: 19 Feb 2025 11:20



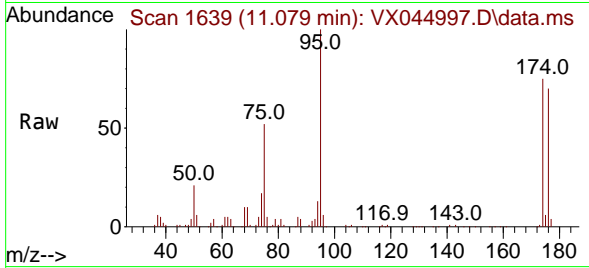
Tgt Ion: 75 Resp: 39192
 Ion Ratio Lower Upper
 75 100
 77 1.1 21.9 65.7#



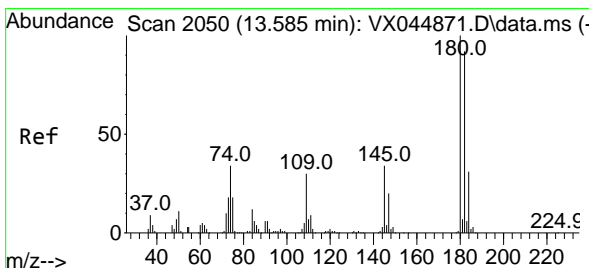
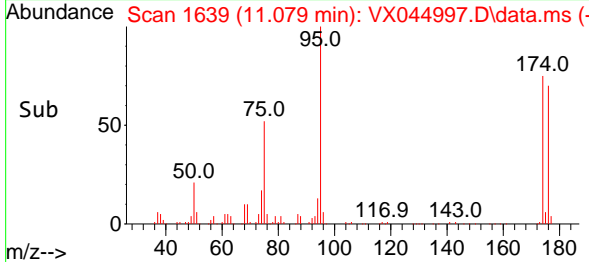
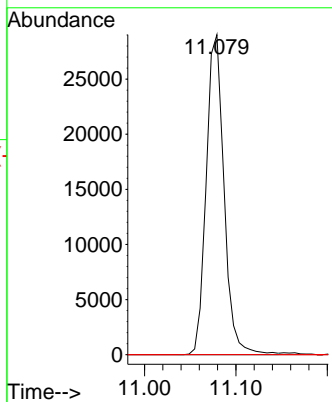


#81
 trans-1,4-Dichloro-2-butene
 Concen: 68.850 ug/l
 RT: 11.079 min Scan# 1639
 Delta R.T. 0.061 min
 Lab File: VX044997.D
 Acq: 19 Feb 2025 11:20

Instrument : MSVOA_X
 ClientSampleId :

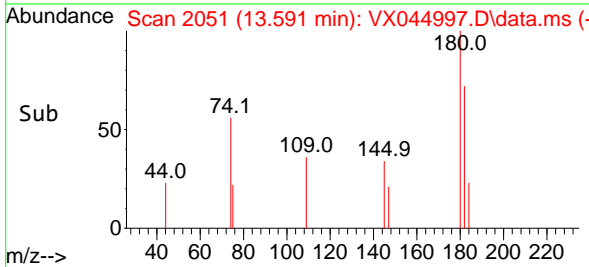
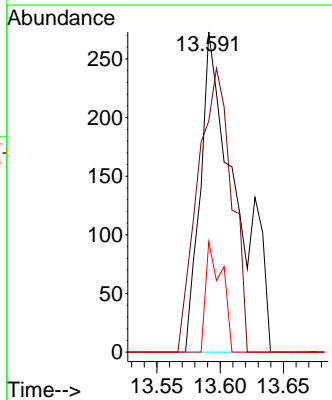
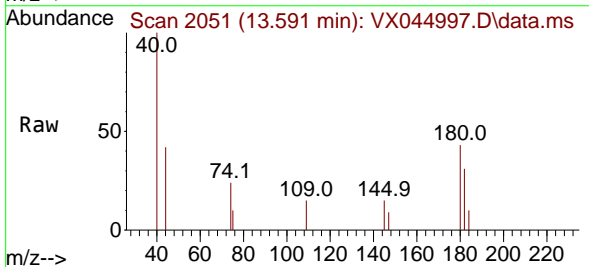


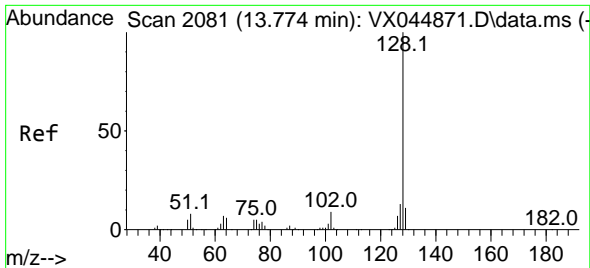
Tgt Ion: 75 Resp: 39192
 Ion Ratio Lower Upper
 75 100
 53 0.0 78.0 117.0#
 89 0.0 36.6 54.8#



#93
 1,2,4-Trichlorobenzene
 Concen: 0.404 ug/l
 RT: 13.591 min Scan# 2051
 Delta R.T. 0.006 min
 Lab File: VX044997.D
 Acq: 19 Feb 2025 11:20

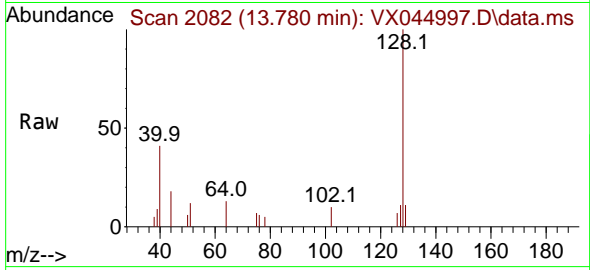
Tgt Ion: 180 Resp: 533
 Ion Ratio Lower Upper
 180 100
 182 84.6 47.6 142.8
 145 15.6 16.4 49.1#





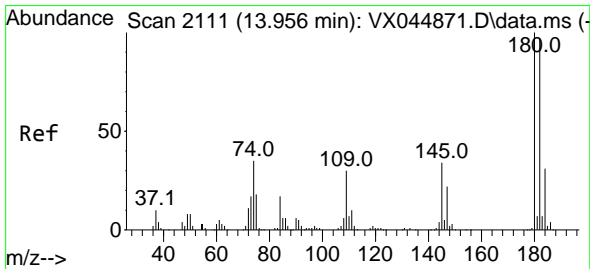
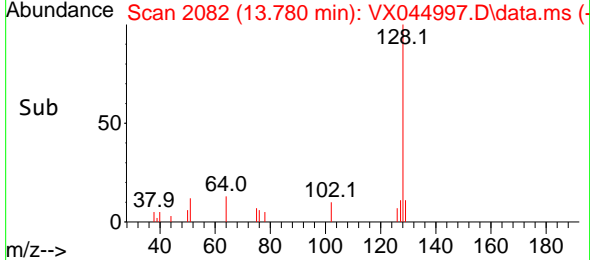
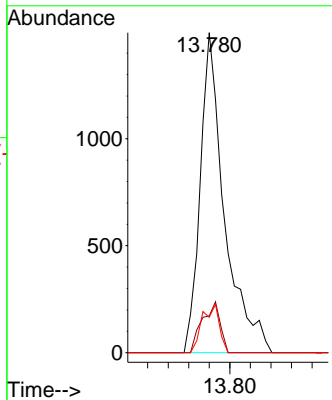
#95
 Naphthalene
 Concen: 0.515 ug/l
 RT: 13.780 min Scan# 2082
 Delta R.T. 0.006 min
 Lab File: VX044997.D
 Acq: 19 Feb 2025 11:20

Instrument : MSVOA_X
 ClientSampleId :



Tgt Ion:128 Resp: 2454

Ion	Ratio	Lower	Upper
128	100		
127	11.7	10.1	15.1
129	10.6	8.9	13.3



#96
 1,2,3-Trichlorobenzene
 Concen: 0.519 ug/l
 RT: 13.969 min Scan# 2113
 Delta R.T. 0.012 min
 Lab File: VX044997.D
 Acq: 19 Feb 2025 11:20

Tgt Ion:180 Resp: 690

Ion	Ratio	Lower	Upper
180	100		
182	82.8	47.9	143.6
145	27.7	17.1	51.3

