

Data Path : Z:\voasrv\HPCHEM1\MSVOA_X\Data\VX022123\
 Data File : VX034203.D
 Acq On : 21 Feb 2023 11:58
 Operator : JC/MD
 Sample : 01613-01RE
 Misc : 5.0mL/MSVOA_X/WATER
 ALS Vial : 8 Sample Multiplier: 1

Instrument :
 MSVOA_X
 ClientSampleId :

Quant Time: Feb 21 15:52:39 2023
 Quant Method : Z:\voasrv\HPCHEM1\MSVOA_X\Method\82X021723W.M
 Quant Title : SW846 8260
 QLast Update : Fri Feb 17 12:33:35 2023
 Response via : Initial Calibration

Compound	R.T.	QIon	Response	Conc	Units	Dev(Min)

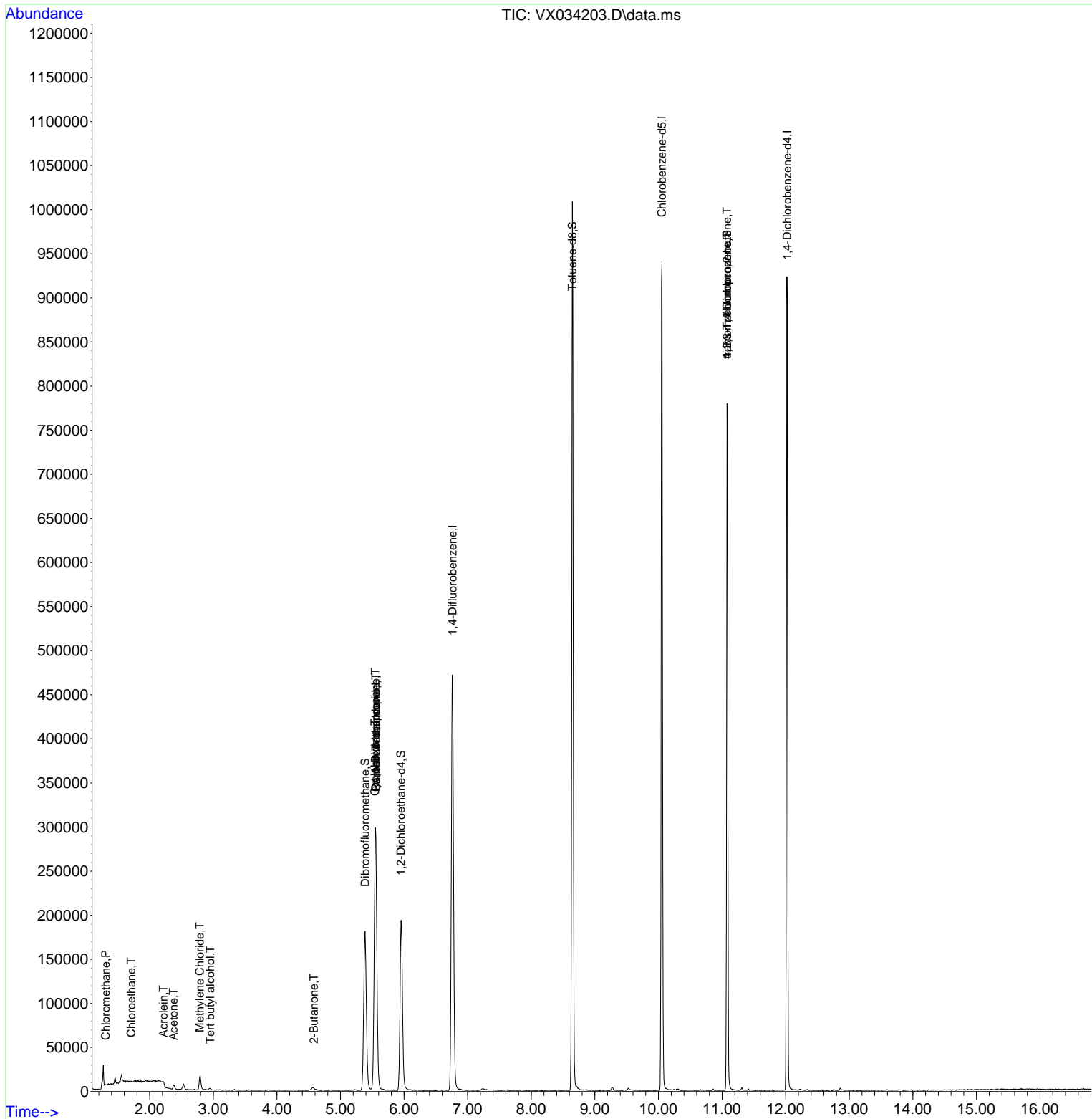
Internal Standards						
1) Pentafluorobenzene	5.556	168	301894	50.000	ug/l	0.00
34) 1,4-Difluorobenzene	6.763	114	503774	50.000	ug/l	0.00
63) Chlorobenzene-d5	10.055	117	445579	50.000	ug/l	0.00
72) 1,4-Dichlorobenzene-d4	12.024	152	198683	50.000	ug/l	0.00
System Monitoring Compounds						
33) 1,2-Dichloroethane-d4	5.952	65	178694	43.951	ug/l	0.00
Spiked Amount	50.000	Range 78 - 117	Recovery	=	87.900%	
35) Dibromofluoromethane	5.385	113	157731	48.088	ug/l	0.00
Spiked Amount	50.000	Range 75 - 124	Recovery	=	96.180%	
50) Toluene-d8	8.647	98	602405	51.153	ug/l	0.00
Spiked Amount	50.000	Range 92 - 112	Recovery	=	102.300%	
62) 4-Bromofluorobenzene	11.079	95	206286	45.795	ug/l	0.00
Spiked Amount	50.000	Range 83 - 123	Recovery	=	91.580%	
Target Compounds						
						Qvalue
3) Chloromethane	1.307	50	1068	0.284	ug/l #	86
5) Bromomethane	1.624	94	341	Below Cal		85
6) Chloroethane	1.709	64	505	0.294	ug/l #	42
11) Tert butyl alcohol	2.953	59	1958	2.153	ug/l #	93
13) Acrolein	2.215	56	253	0.609	ug/l #	18
16) Acetone	2.373	43	5537	2.640	ug/l	97
20) Methylene Chloride	2.788	84	7579	2.006	ug/l	96
25) 2-Butanone	4.580	43	2031	0.669	ug/l	97
31) Cyclohexane	5.544	56	6266	1.032	ug/l #	1
36) 1,1-Dichloropropene	5.550	75	22190	4.574	ug/l #	48
38) Carbon Tetrachloride	5.556	117	28328	5.675	ug/l #	15
76) 1,2,3-Trichloropropane	11.079	75	101504	20.303	ug/l #	34
81) trans-1,4-Dichloro-2-b...	11.079	75	101504	52.157	ug/l #	8

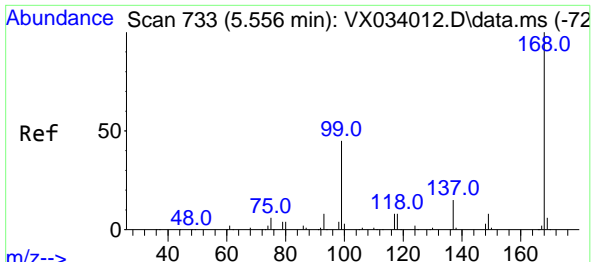
(#) = qualifier out of range (m) = manual integration (+) = signals summed

Data Path : Z:\voasrv\HPCHEM1\MSVOA_X\Data\VX022123\
 Data File : VX034203.D
 Acq On : 21 Feb 2023 11:58
 Operator : JC/MD
 Sample : 01613-01RE
 Misc : 5.0mL/MSVOA_X/WATER
 ALS Vial : 8 Sample Multiplier: 1

Instrument :
 MSVOA_X
 ClientSampleId :

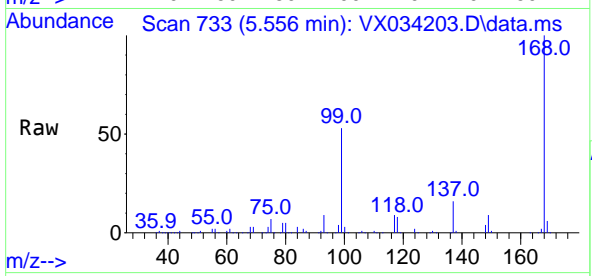
Quant Time: Feb 21 15:52:39 2023
 Quant Method : Z:\voasrv\HPCHEM1\MSVOA_X\Method\82X021723W.M
 Quant Title : SW846 8260
 QLast Update : Fri Feb 17 12:33:35 2023
 Response via : Initial Calibration



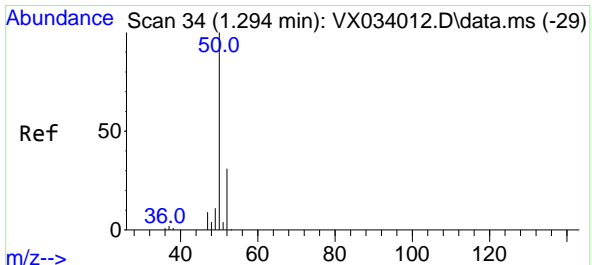
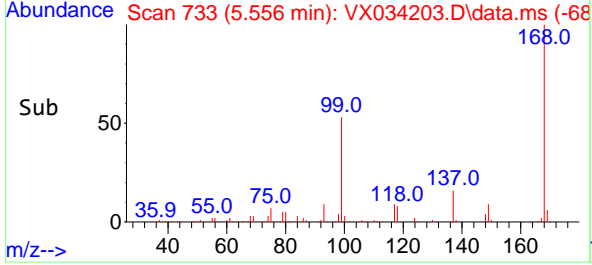
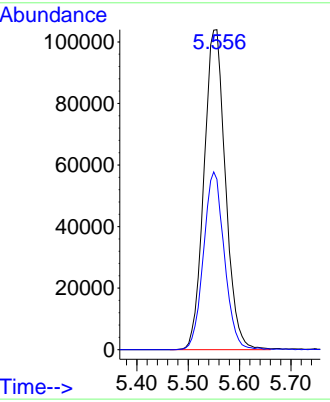


#1
 Pentafluorobenzene
 Concen: 50.000 ug/l
 RT: 5.556 min Scan# 71
 Delta R.T. 0.006 min
 Lab File: VX034203.D
 Acq: 21 Feb 2023 11:58

Instrument : MSVOA_X
 ClientSampleId :

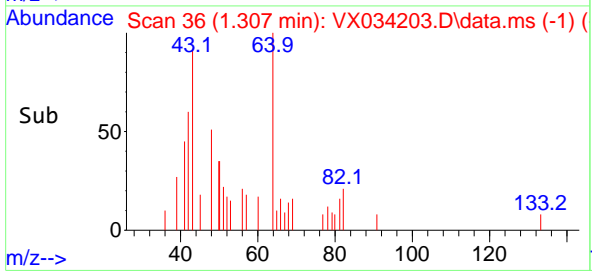
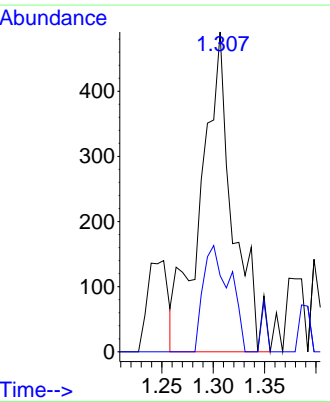
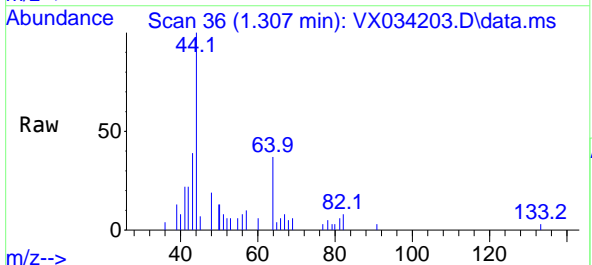


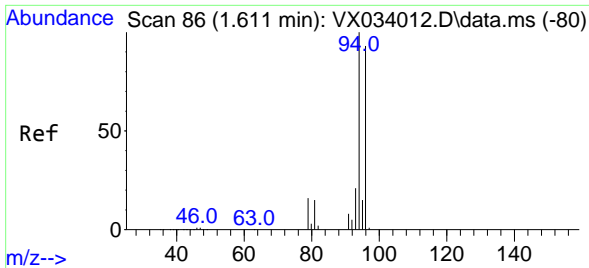
Tgt Ion:168 Resp: 301894
 Ion Ratio Lower Upper
 168 100
 99 53.3 39.6 59.4



#3
 Chloromethane
 Concen: 0.284 ug/l
 RT: 1.307 min Scan# 36
 Delta R.T. 0.012 min
 Lab File: VX034203.D
 Acq: 21 Feb 2023 11:58

Tgt Ion: 50 Resp: 1068
 Ion Ratio Lower Upper
 50 100
 52 23.8 25.2 37.8#

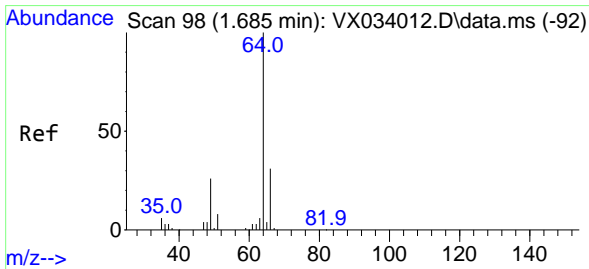
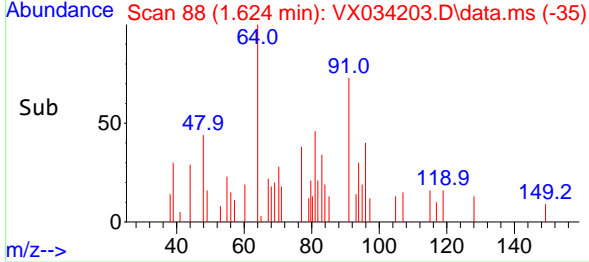
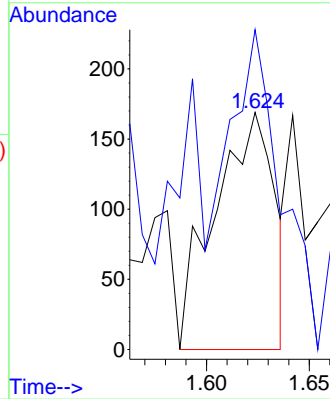
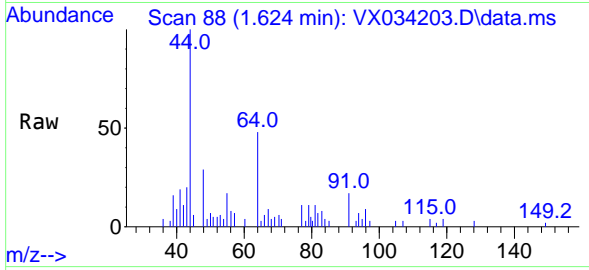




#5
 Bromomethane
 Concen: Below Cal
 RT: 1.624 min Scan# 81
 Delta R.T. 0.025 min
 Lab File: VX034203.D
 Acq: 21 Feb 2023 11:58

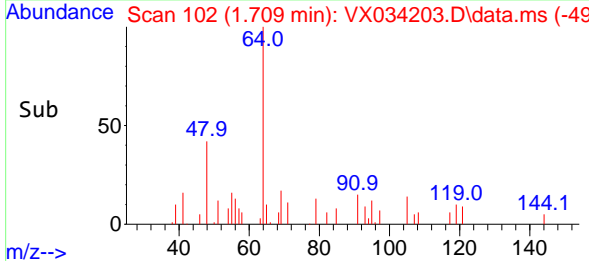
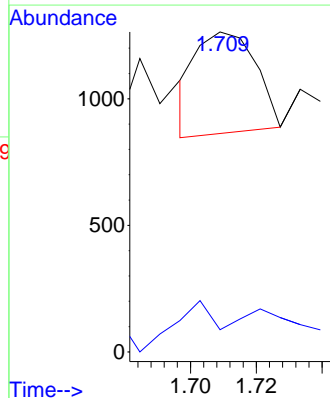
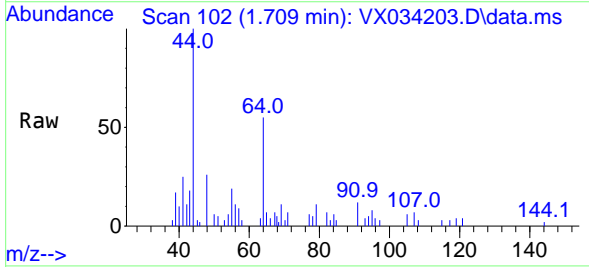
Instrument :
 MSVOA_X
 ClientSampleId :

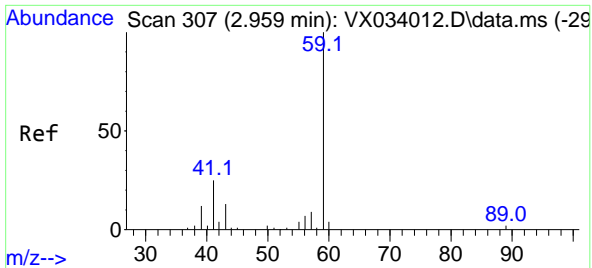
Tgt Ion: 94 Resp: 341
 Ion Ratio Lower Upper
 94 100
 96 78.1 74.3 111.5



#6
 Chloroethane
 Concen: 0.294 ug/l
 RT: 1.709 min Scan# 102
 Delta R.T. 0.025 min
 Lab File: VX034203.D
 Acq: 21 Feb 2023 11:58

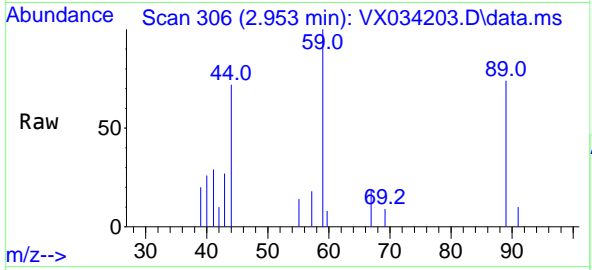
Tgt Ion: 64 Resp: 505
 Ion Ratio Lower Upper
 64 100
 66 0.0 26.1 39.1#



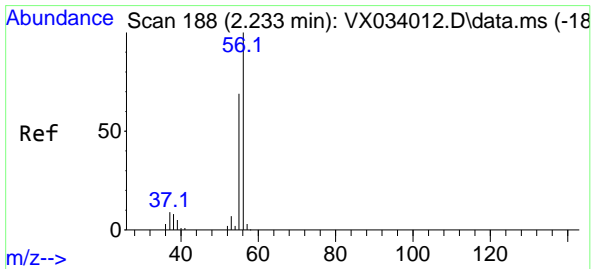
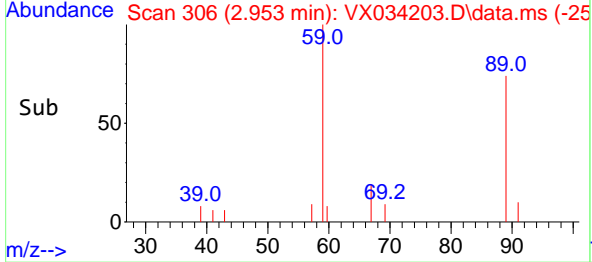
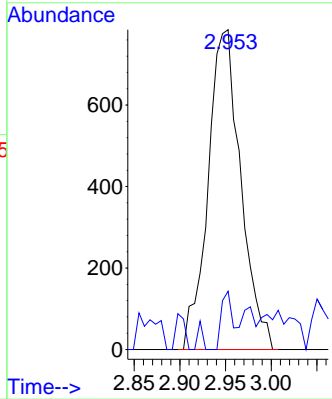


#11
 Tert butyl alcohol
 Concen: 2.153 ug/l
 RT: 2.953 min Scan# 307
 Delta R.T. 0.000 min
 Lab File: VX034203.D
 Acq: 21 Feb 2023 11:58

Instrument : MSVOA_X
 ClientSampleId :

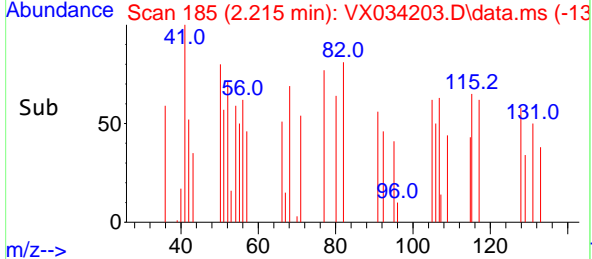
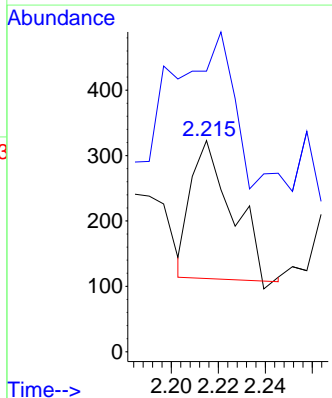
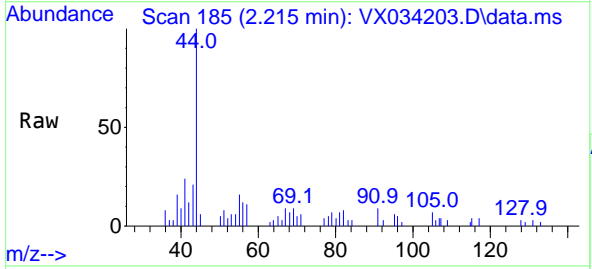


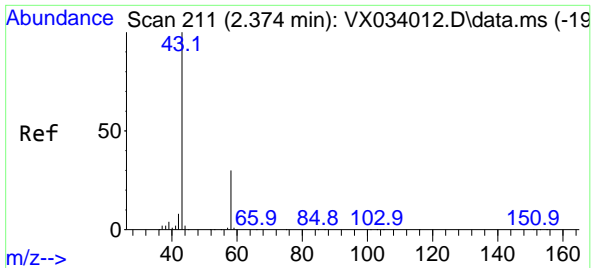
Tgt Ion: 59 Resp: 1958
 Ion Ratio Lower Upper
 59 100
 57 6.9 3.7 5.5#



#13
 Acrolein
 Concen: 0.609 ug/l
 RT: 2.215 min Scan# 185
 Delta R.T. -0.018 min
 Lab File: VX034203.D
 Acq: 21 Feb 2023 11:58

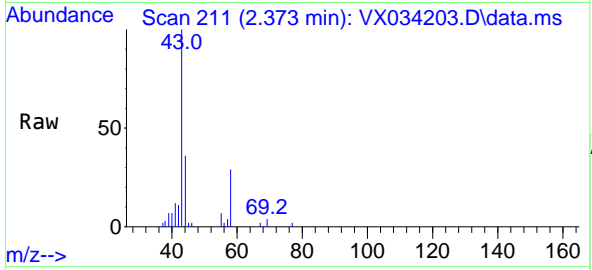
Tgt Ion: 56 Resp: 253
 Ion Ratio Lower Upper
 56 100
 55 137.5 56.3 84.5#



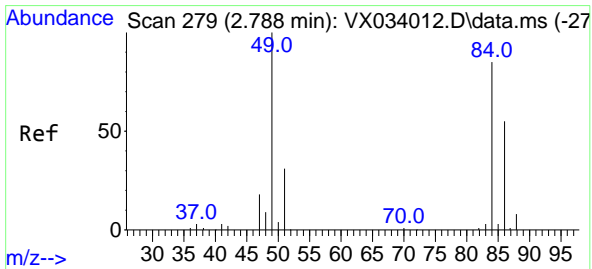
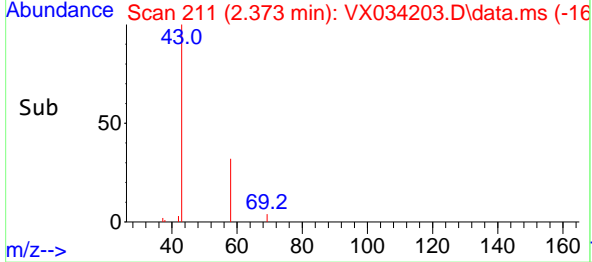
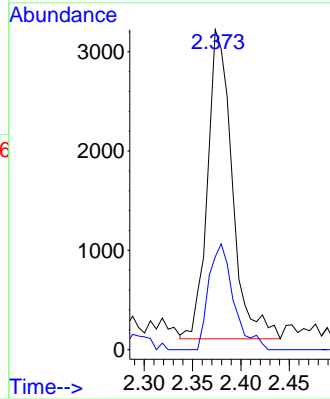


#16
 Acetone
 Concen: 2.640 ug/l
 RT: 2.373 min Scan# 211
 Delta R.T. 0.000 min
 Lab File: VX034203.D
 Acq: 21 Feb 2023 11:58

Instrument :
 MSVOA_X
 ClientSampleId :

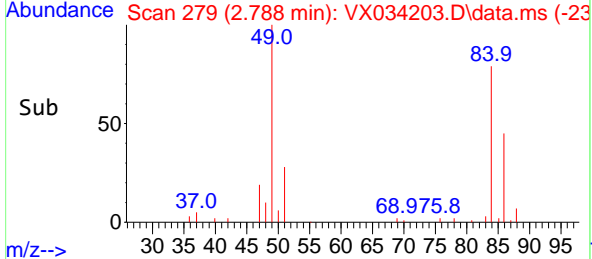
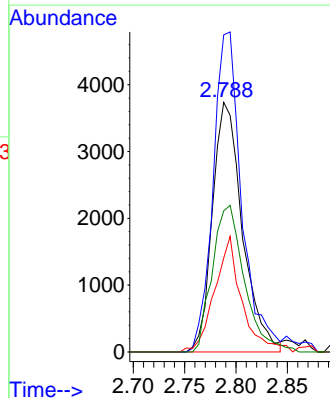
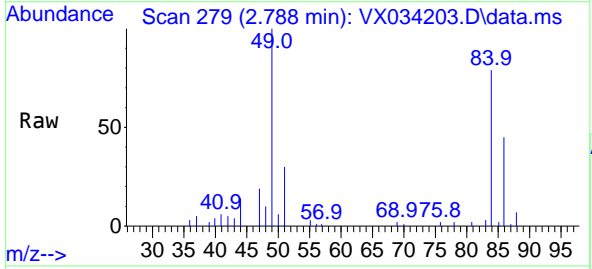


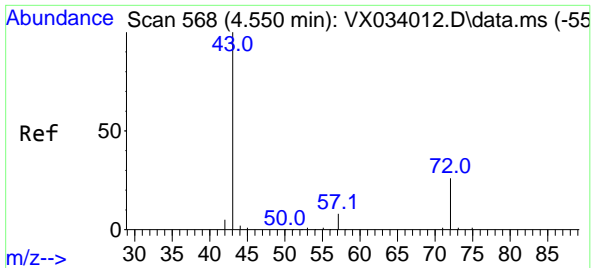
Tgt Ion: 43 Resp: 5537
 Ion Ratio Lower Upper
 43 100
 58 30.0 22.6 33.8



#20
 Methylene Chloride
 Concen: 2.006 ug/l
 RT: 2.788 min Scan# 279
 Delta R.T. 0.000 min
 Lab File: VX034203.D
 Acq: 21 Feb 2023 11:58

Tgt Ion: 84 Resp: 7579
 Ion Ratio Lower Upper
 84 100
 49 127.0 101.1 151.7
 51 37.6 31.0 46.6
 86 56.5 52.6 79.0

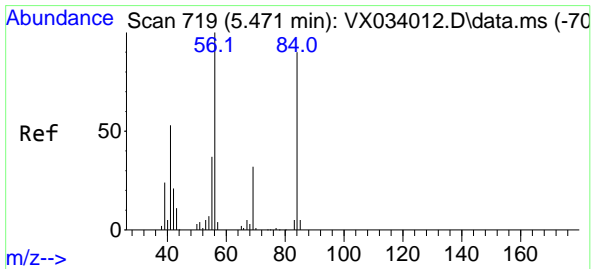
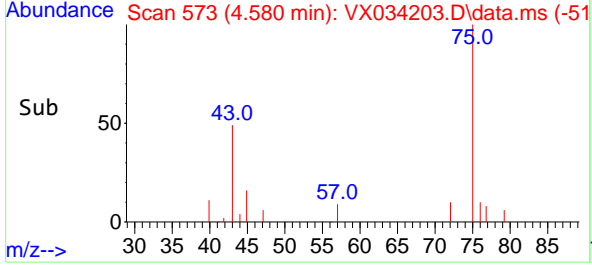
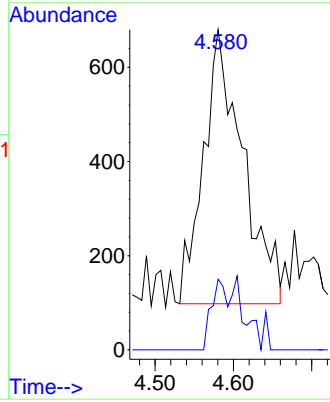
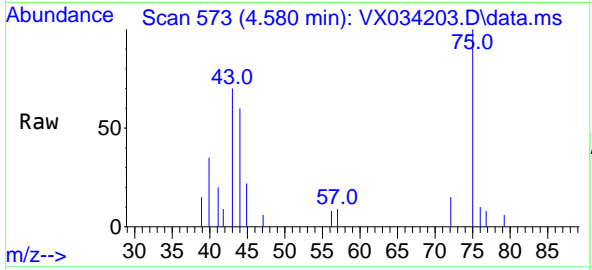




#25
 2-Butanone
 Concen: 0.669 ug/l
 RT: 4.580 min Scan# 51
 Delta R.T. 0.037 min
 Lab File: VX034203.D
 Acq: 21 Feb 2023 11:58

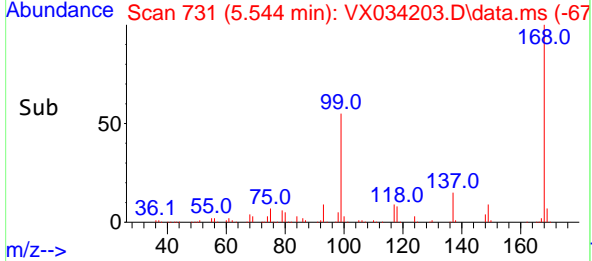
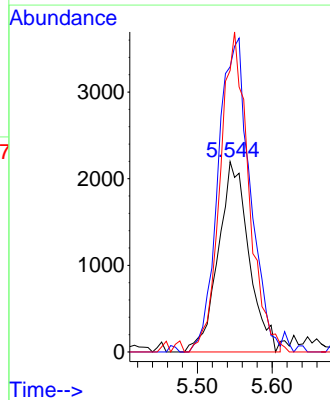
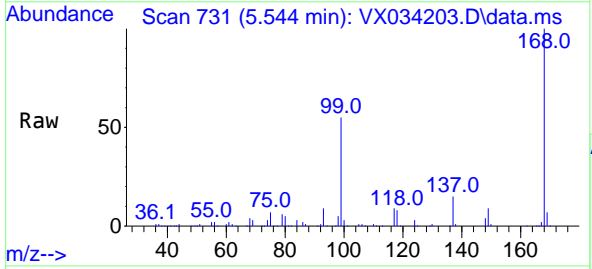
Instrument :
 MSVOA_X
 ClientSampleId :

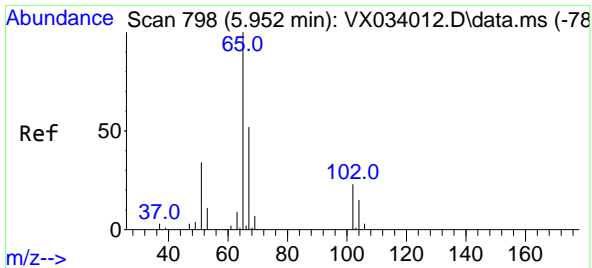
Tgt Ion: 43 Resp: 2031
 Ion Ratio Lower Upper
 43 100
 72 25.8 19.4 29.2



#31
 Cyclohexane
 Concen: 1.032 ug/l
 RT: 5.544 min Scan# 731
 Delta R.T. 0.073 min
 Lab File: VX034203.D
 Acq: 21 Feb 2023 11:58

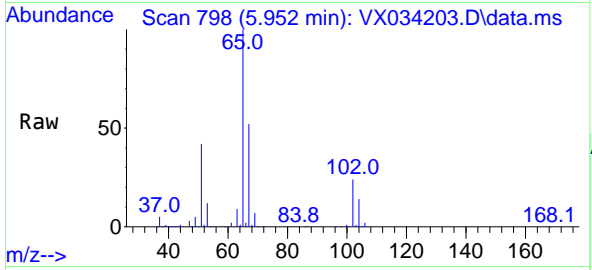
Tgt Ion: 56 Resp: 6266
 Ion Ratio Lower Upper
 56 100
 69 149.9 24.6 37.0#
 84 143.6 71.0 106.6#



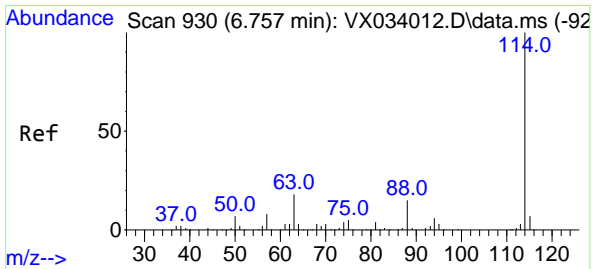
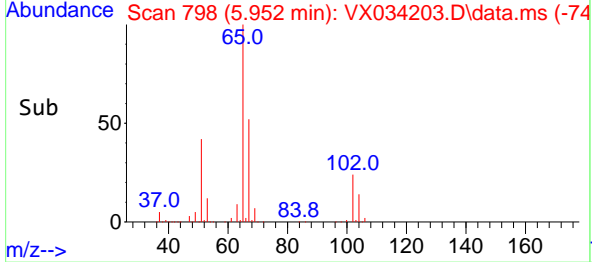
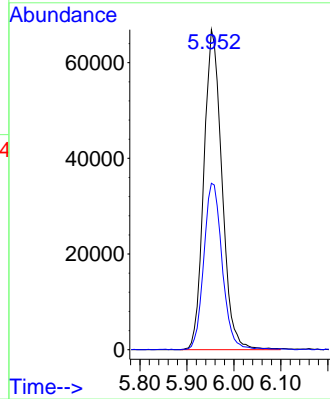


#33
 1,2-Dichloroethane-d4
 Concen: 43.951 ug/l
 RT: 5.952 min Scan# 798
 Delta R.T. 0.000 min
 Lab File: VX034203.D
 Acq: 21 Feb 2023 11:58

Instrument :
 MSVOA_X
 ClientSampleId :

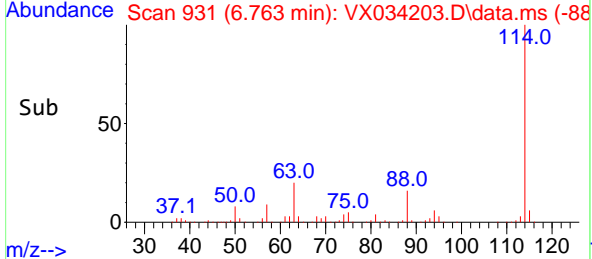
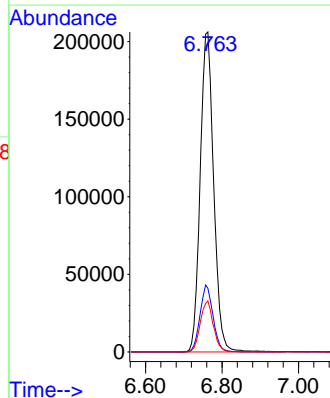
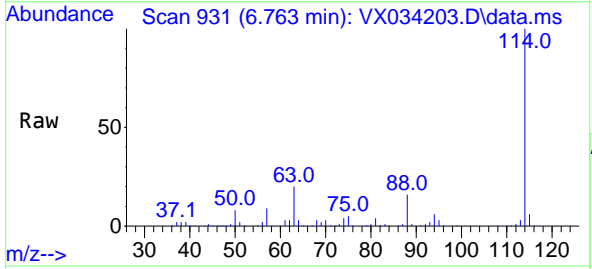


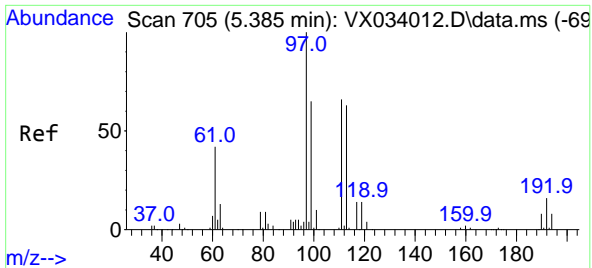
Tgt Ion: 65 Resp: 178694
 Ion Ratio Lower Upper
 65 100
 67 52.6 0.0 104.8



#34
 1,4-Difluorobenzene
 Concen: 50.000 ug/l
 RT: 6.763 min Scan# 931
 Delta R.T. 0.006 min
 Lab File: VX034203.D
 Acq: 21 Feb 2023 11:58

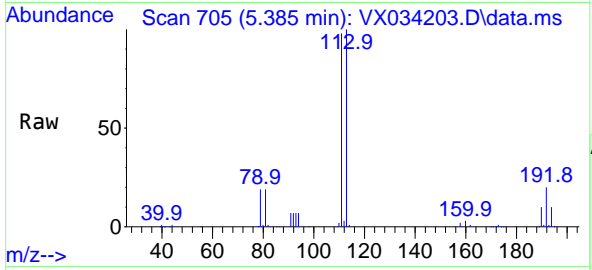
Tgt Ion: 114 Resp: 503774
 Ion Ratio Lower Upper
 114 100
 63 19.9 0.0 37.4
 88 16.0 0.0 30.6



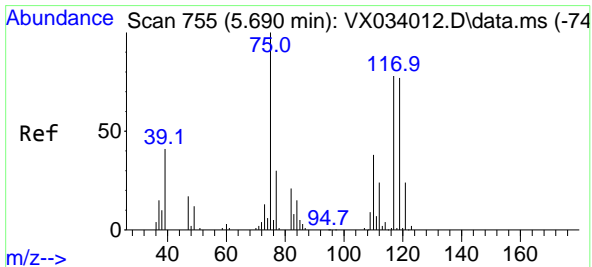
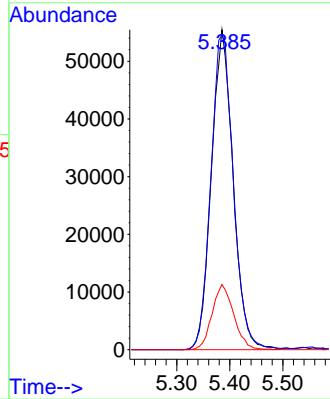
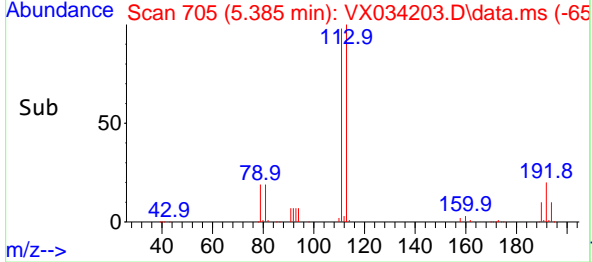


#35
 Dibromofluoromethane
 Concen: 48.088 ug/l
 RT: 5.385 min Scan# 705
 Delta R.T. 0.000 min
 Lab File: VX034203.D
 Acq: 21 Feb 2023 11:58

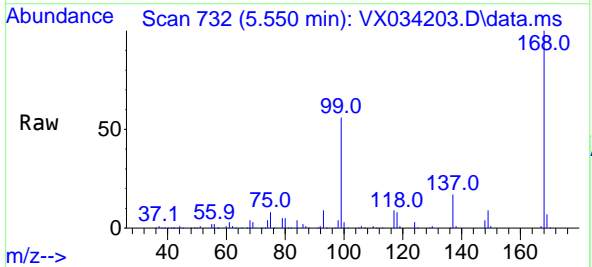
Instrument : MSVOA_X
 ClientSampleId :



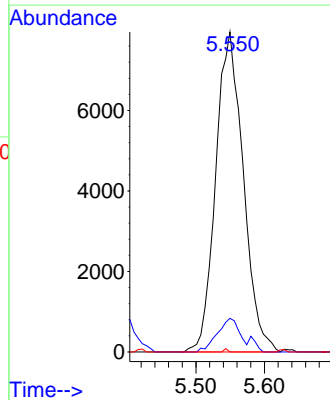
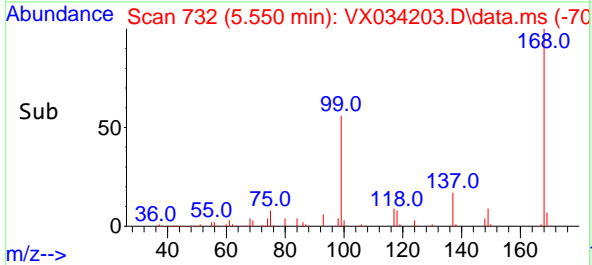
Tgt Ion:113 Resp: 157731
 Ion Ratio Lower Upper
 113 100
 111 102.0 83.0 124.6
 192 20.3 19.0 28.4

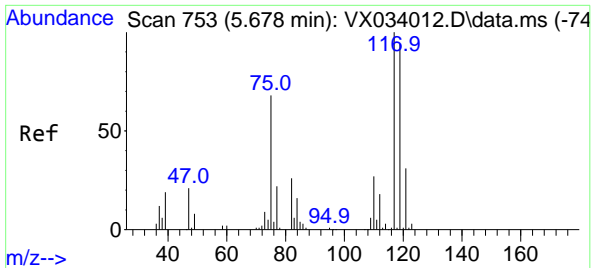


#36
 1,1-Dichloropropene
 Concen: 4.574 ug/l
 RT: 5.550 min Scan# 732
 Delta R.T. -0.140 min
 Lab File: VX034203.D
 Acq: 21 Feb 2023 11:58



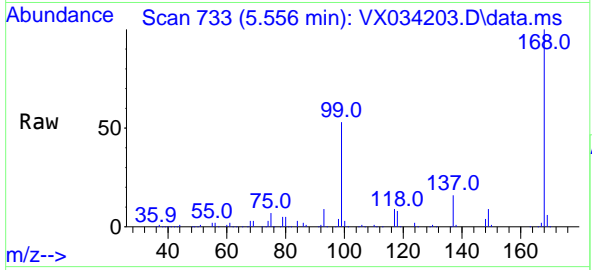
Tgt Ion: 75 Resp: 22190
 Ion Ratio Lower Upper
 75 100
 110 8.5 18.8 56.4#
 77 0.1 25.1 37.7#



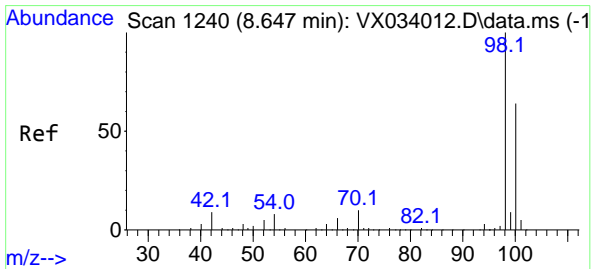
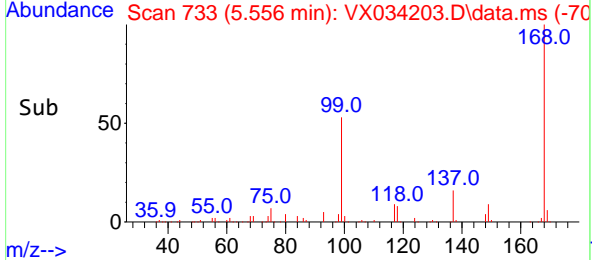
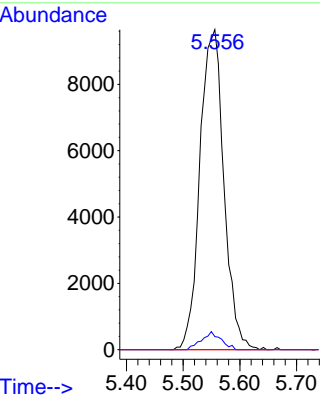


#38
 Carbon Tetrachloride
 Concen: 5.675 ug/l
 RT: 5.556 min Scan# 71
 Delta R.T. -0.116 min
 Lab File: VX034203.D
 Acq: 21 Feb 2023 11:58

Instrument : MSVOA_X
 ClientSampleId :

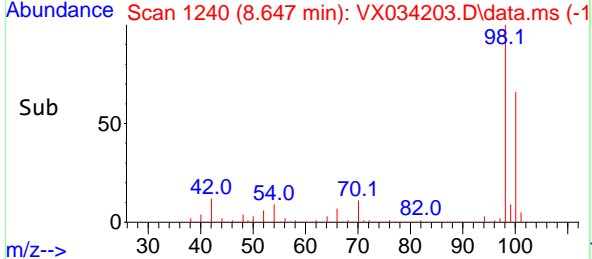
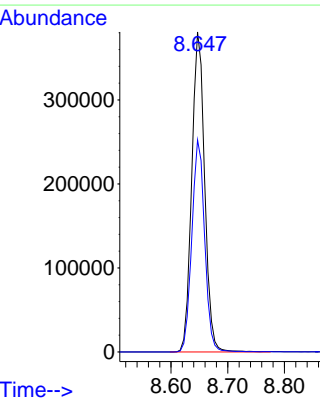
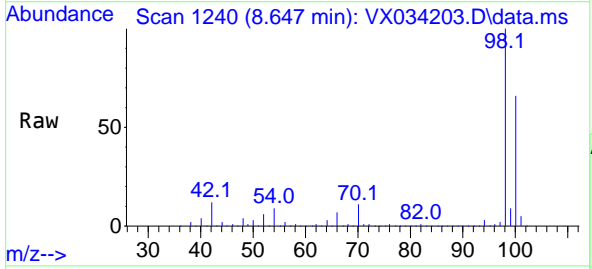


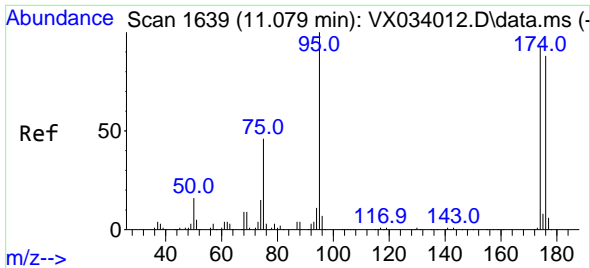
Tgt Ion:117 Resp: 28328
 Ion Ratio Lower Upper
 117 100
 119 4.1 78.0 117.0#
 121 0.0 24.4 36.6#



#50
 Toluene-d8
 Concen: 51.153 ug/l
 RT: 8.647 min Scan# 1240
 Delta R.T. 0.000 min
 Lab File: VX034203.D
 Acq: 21 Feb 2023 11:58

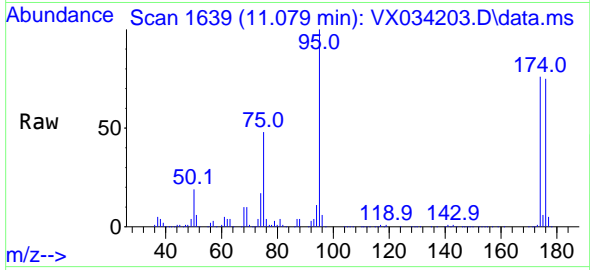
Tgt Ion: 98 Resp: 602405
 Ion Ratio Lower Upper
 98 100
 100 66.0 53.6 80.4



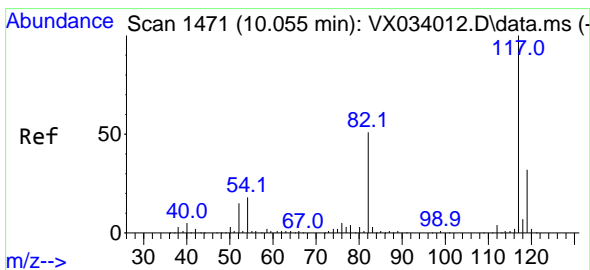
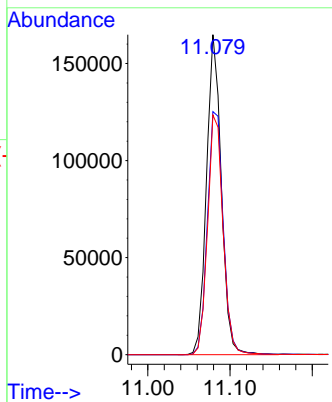
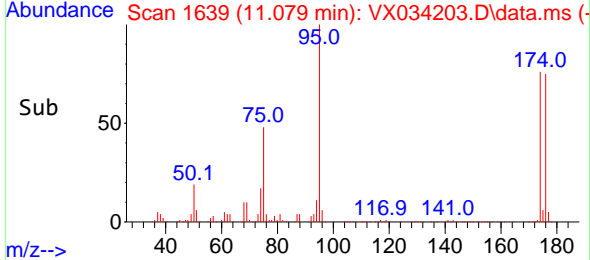


#62
 4-Bromofluorobenzene
 Concen: 45.795 ug/l
 RT: 11.079 min Scan# 1
 Delta R.T. 0.000 min
 Lab File: VX034203.D
 Acq: 21 Feb 2023 11:58

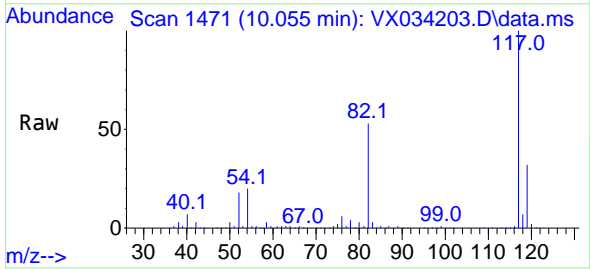
Instrument :
 MSVOA_X
 ClientSampleId :



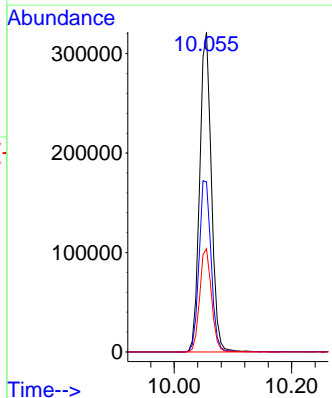
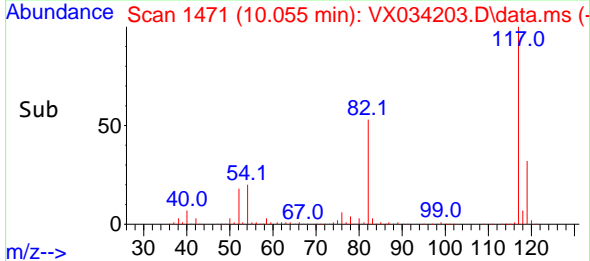
Tgt Ion: 95 Resp: 206286
 Ion Ratio Lower Upper
 95 100
 174 81.5 0.0 184.4
 176 78.1 0.0 178.8

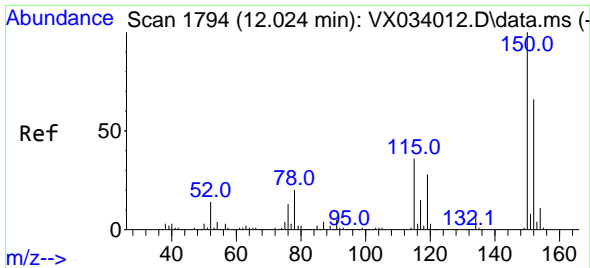


#63
 Chlorobenzene-d5
 Concen: 50.000 ug/l
 RT: 10.055 min Scan# 1471
 Delta R.T. 0.000 min
 Lab File: VX034203.D
 Acq: 21 Feb 2023 11:58



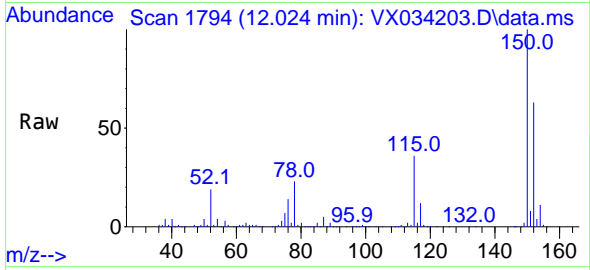
Tgt Ion: 117 Resp: 445579
 Ion Ratio Lower Upper
 117 100
 82 53.2 40.6 60.8
 119 32.2 25.6 38.4



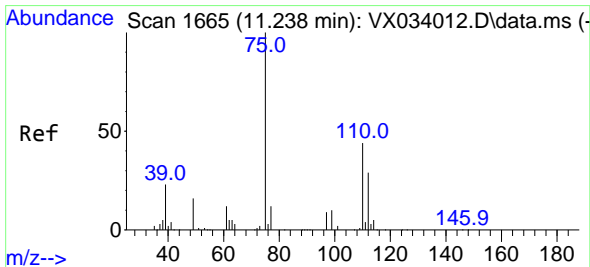
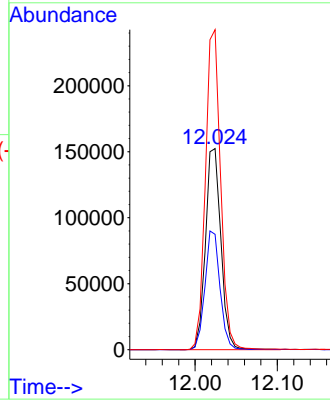
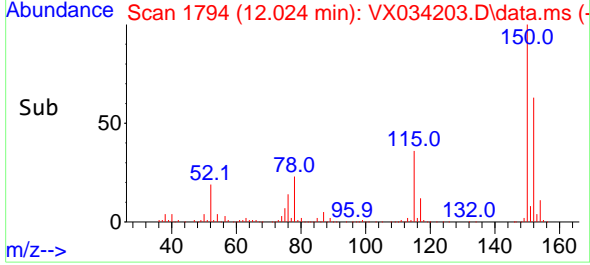


#72
 1,4-Dichlorobenzene-d4
 Concen: 50.000 ug/l
 RT: 12.024 min Scan# 11
 Delta R.T. 0.000 min
 Lab File: VX034203.D
 Acq: 21 Feb 2023 11:58

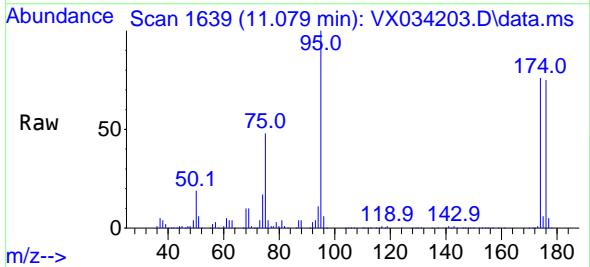
Instrument :
 MSVOA_X
 ClientSampleId :



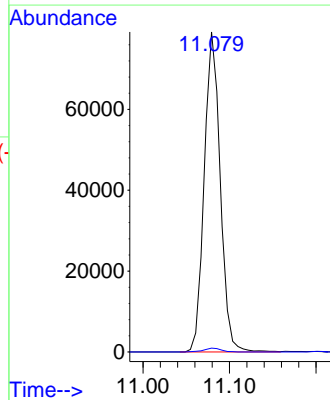
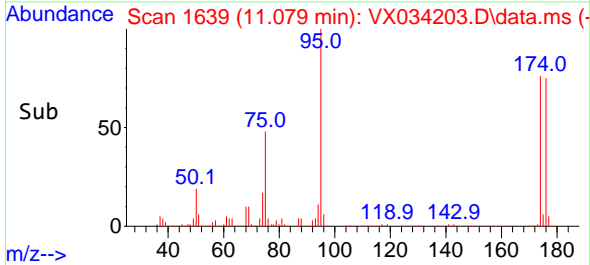
Tgt Ion:152 Resp: 198683
 Ion Ratio Lower Upper
 152 100
 115 57.6 38.7 116.1
 150 156.5 0.0 348.2

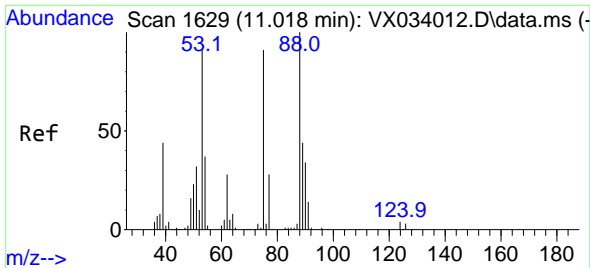


#76
 1,2,3-Trichloropropane
 Concen: 20.303 ug/l
 RT: 11.079 min Scan# 1639
 Delta R.T. -0.158 min
 Lab File: VX034203.D
 Acq: 21 Feb 2023 11:58



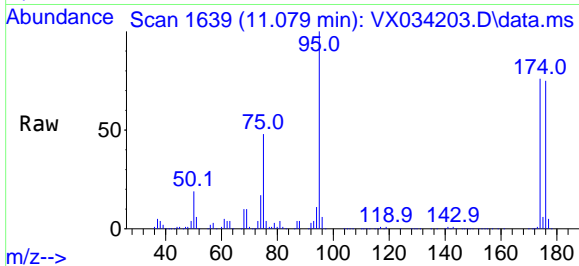
Tgt Ion: 75 Resp: 101504
 Ion Ratio Lower Upper
 75 100
 77 1.3 21.8 65.4#





#81
 trans-1,4-Dichloro-2-butene
 Concen: 52.157 ug/l
 RT: 11.079 min Scan# 10
 Delta R.T. 0.061 min
 Lab File: VX034203.D
 Acq: 21 Feb 2023 11:58

Instrument :
 MSVOA_X
 ClientSampleId :



Tgt Ion: 75 Resp: 101504
 Ion Ratio Lower Upper
 75 100
 53 0.0 83.0 124.6#
 89 0.0 37.7 56.5#

