

Data Path : Z:\voasrv\HPCHEM1\MSVOA_N\Data\VN022425\
 Data File : VN085838.D
 Acq On : 24 Feb 2025 15:37
 Operator : JC\MD
 Sample : Q1405-11
 Misc : 5.0mL/MSVOA_N/WATER
 ALS Vial : 12 Sample Multiplier: 1

Instrument :
 MSVOA_X
 ClientSampleId :

Quant Time: Feb 24 15:54:48 2025
 Quant Method : Z:\voasrv\HPCHEM1\MSVOA_N\methods\82N021825W.M
 Quant Title : SW846 8260
 QLast Update : Wed Feb 19 03:43:32 2025
 Response via : Initial Calibration

Compound	R.T.	QIon	Response	Conc	Units	Dev(Min)

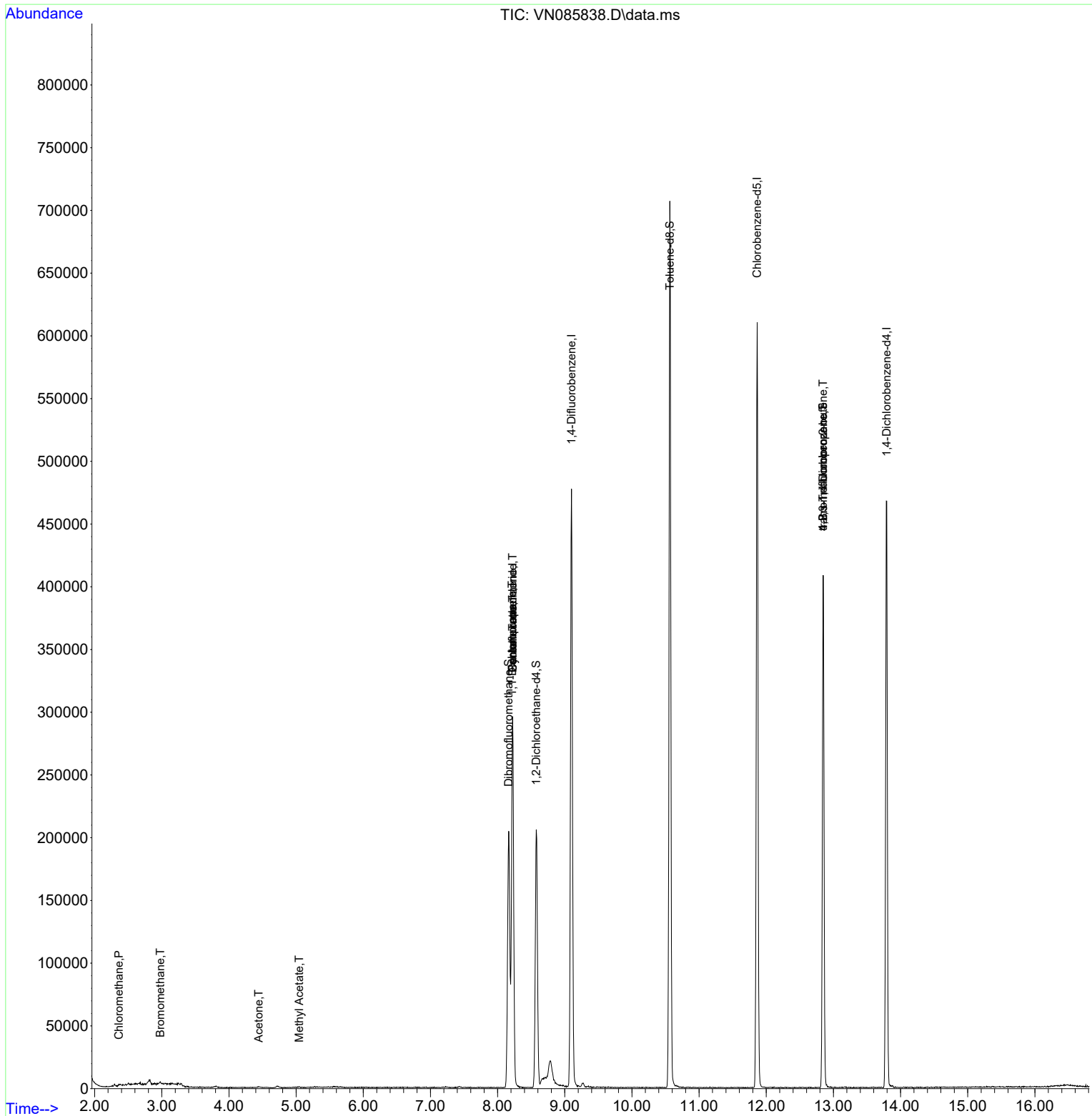
Internal Standards						
1) Pentafluorobenzene	8.224	168	212384	50.00	ug/l	0.00
34) 1,4-Difluorobenzene	9.100	114	411076	50.00	ug/l	0.00
63) Chlorobenzene-d5	11.865	117	362397	50.00	ug/l	0.00
72) 1,4-Dichlorobenzene-d4	13.794	152	137032	50.00	ug/l	0.00
System Monitoring Compounds						
33) 1,2-Dichloroethane-d4	8.576	65	168666	61.26	ug/l	0.00
Spiked Amount	50.000	Range 74 - 125	Recovery	=	122.52%	
35) Dibromofluoromethane	8.165	113	147765	54.93	ug/l	0.00
Spiked Amount	50.000	Range 75 - 124	Recovery	=	109.86%	
50) Toluene-d8	10.565	98	490740	50.14	ug/l	0.00
Spiked Amount	50.000	Range 86 - 113	Recovery	=	100.28%	
62) 4-Bromofluorobenzene	12.847	95	143968	44.65	ug/l	0.00
Spiked Amount	50.000	Range 77 - 121	Recovery	=	89.30%	
Target Compounds						
						Qvalue
3) Chloromethane	2.359	50	930	0.32	ug/l #	84
5) Bromomethane	2.977	94	731	0.37	ug/l #	66
16) Acetone	4.441	43	1239	1.42	ug/l #	40
18) Methyl Acetate	5.047	43	875	0.29	ug/l #	60
31) Cyclohexane	8.224	56	4811	1.22	ug/l #	1
36) 1,1-Dichloropropene	8.218	75	17918	4.71	ug/l #	48
38) Carbon Tetrachloride	8.224	117	22606	5.00	ug/l #	18
76) 1,2,3-Trichloropropane	12.847	75	72640	23.86	ug/l #	1
81) trans-1,4-Dichloro-2-b...	12.847	75	72640	69.63	ug/l #	12

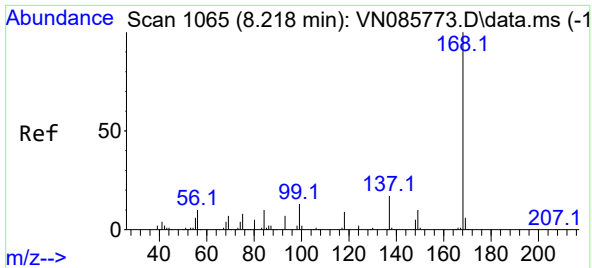
(#) = qualifier out of range (m) = manual integration (+) = signals summed

Data Path : Z:\voasrv\HPCHEM1\MSVOA_N\Data\VN022425\
 Data File : VN085838.D
 Acq On : 24 Feb 2025 15:37
 Operator : JC\MD
 Sample : Q1405-11
 Misc : 5.0mL/MSVOA_N/WATER
 ALS Vial : 12 Sample Multiplier: 1

Instrument :
 MSVOA_X
 ClientSampleId :

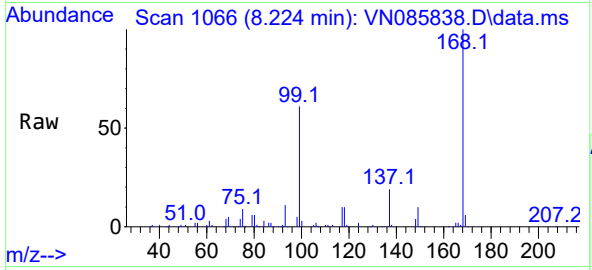
Quant Time: Feb 24 15:54:48 2025
 Quant Method : Z:\voasrv\HPCHEM1\MSVOA_N\methods\82N021825W.M
 Quant Title : SW846 8260
 QLast Update : Wed Feb 19 03:43:32 2025
 Response via : Initial Calibration



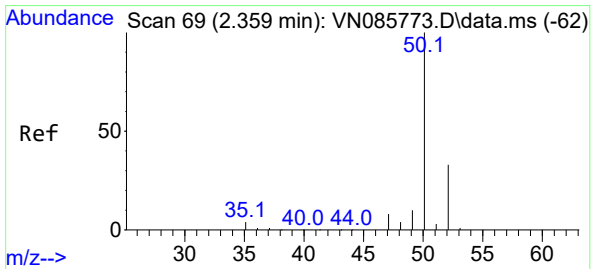
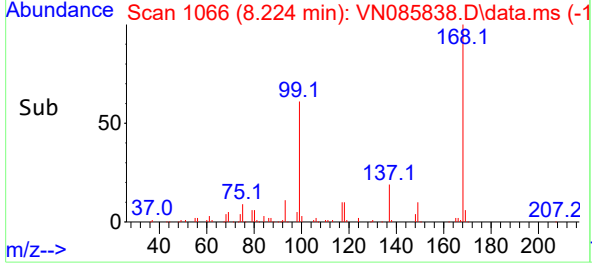
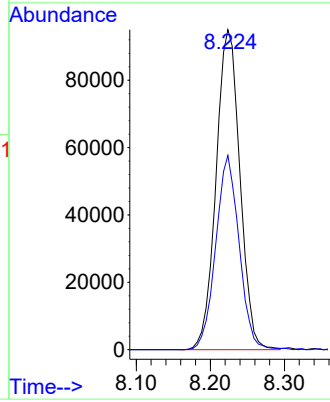


#1
 Pentafluorobenzene
 Concen: 50.00 ug/l
 RT: 8.224 min Scan# 10
 Delta R.T. 0.006 min
 Lab File: VN085838.D
 Acq: 24 Feb 2025 15:37

Instrument :
 MSVOA_X
 ClientSampleId :

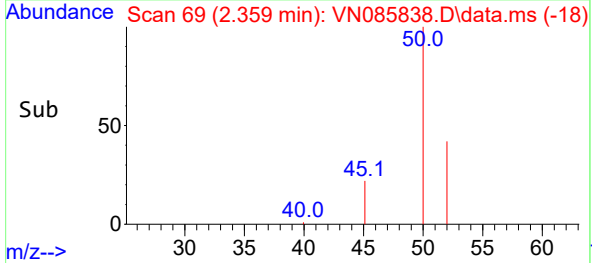
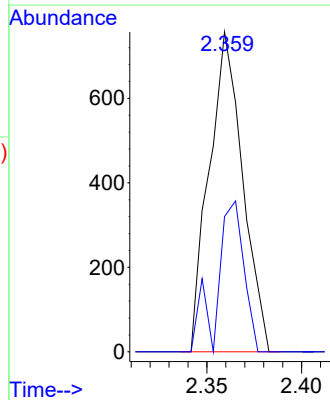
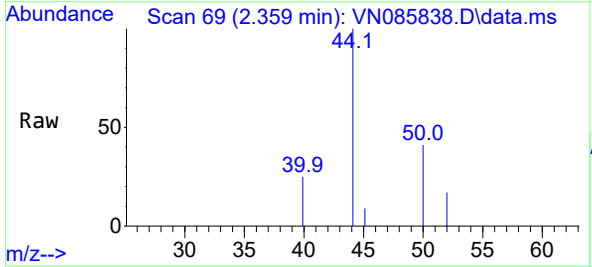


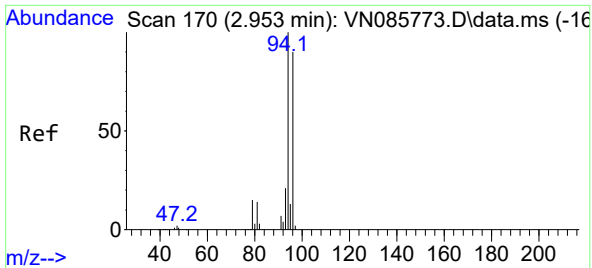
Tgt Ion:168 Resp: 212384
 Ion Ratio Lower Upper
 168 100
 99 60.7 47.9 71.9



#3
 Chloromethane
 Concen: 0.32 ug/l
 RT: 2.359 min Scan# 69
 Delta R.T. -0.000 min
 Lab File: VN085838.D
 Acq: 24 Feb 2025 15:37

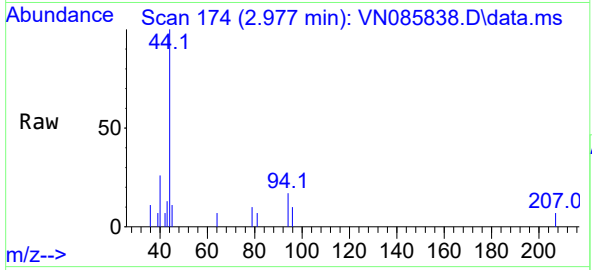
Tgt Ion: 50 Resp: 930
 Ion Ratio Lower Upper
 50 100
 52 42.3 26.7 40.1#



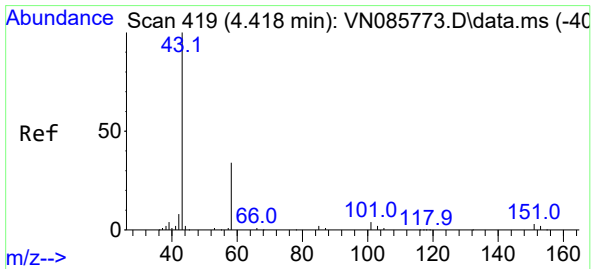
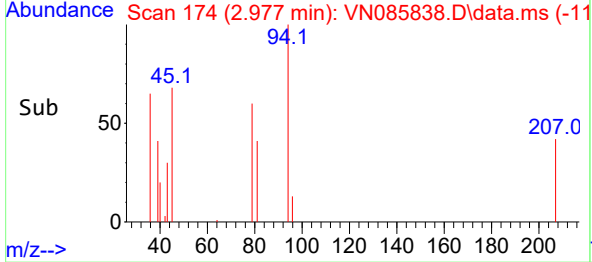
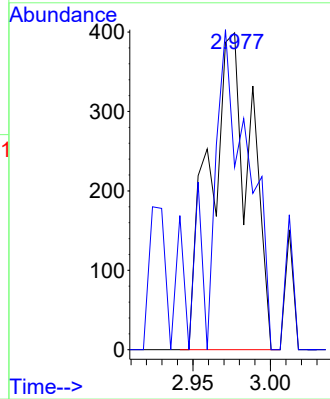


#5
 Bromomethane
 Concen: 0.37 ug/l
 RT: 2.977 min Scan# 11
 Delta R.T. 0.023 min
 Lab File: VN085838.D
 Acq: 24 Feb 2025 15:37

Instrument :
 MSVOA_X
 ClientSampleId :

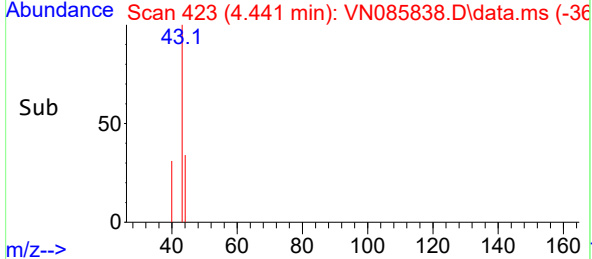
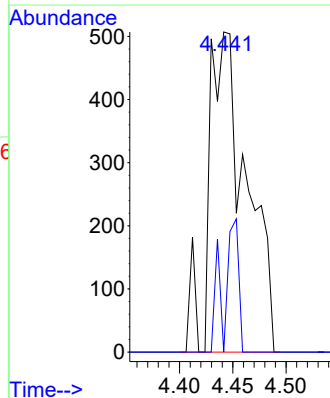
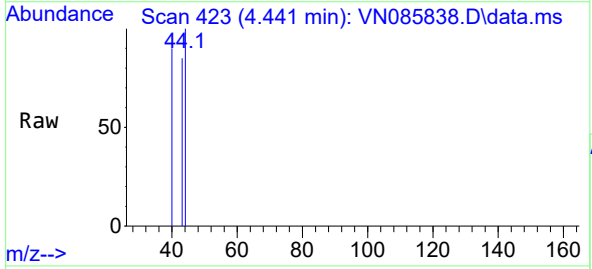


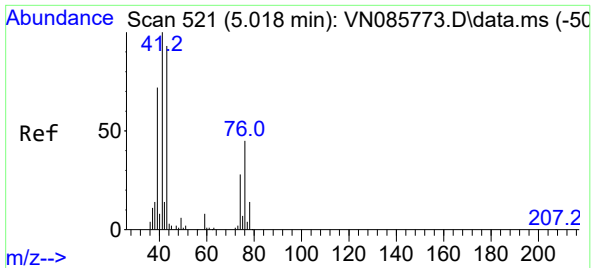
Tgt Ion: 94 Resp: 731
 Ion Ratio Lower Upper
 94 100
 96 57.6 71.7 107.5#



#16
 Acetone
 Concen: 1.42 ug/l
 RT: 4.441 min Scan# 423
 Delta R.T. 0.023 min
 Lab File: VN085838.D
 Acq: 24 Feb 2025 15:37

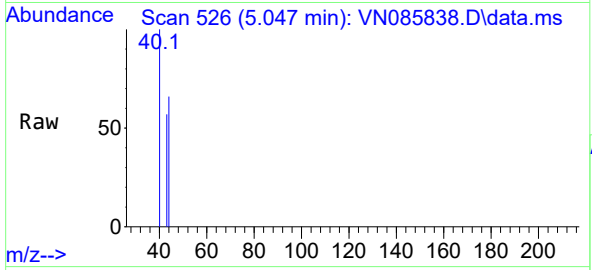
Tgt Ion: 43 Resp: 1239
 Ion Ratio Lower Upper
 43 100
 58 0.0 27.5 41.3#



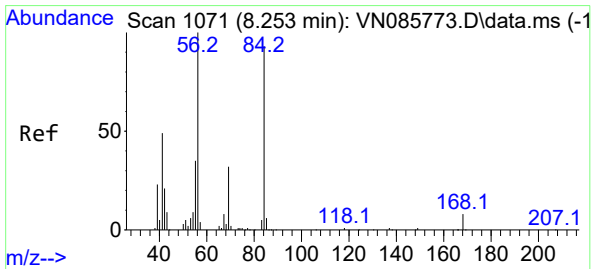
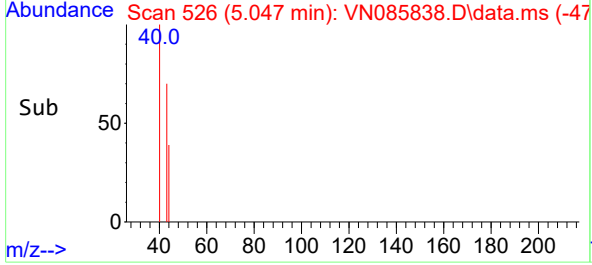
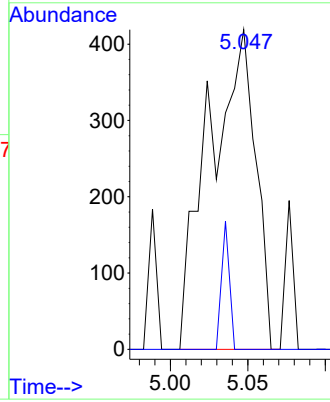


#18
 Methyl Acetate
 Concen: 0.29 ug/l
 RT: 5.047 min Scan# 51
 Delta R.T. 0.029 min
 Lab File: VN085838.D
 Acq: 24 Feb 2025 15:37

Instrument :
 MSVOA_X
 ClientSampleId :

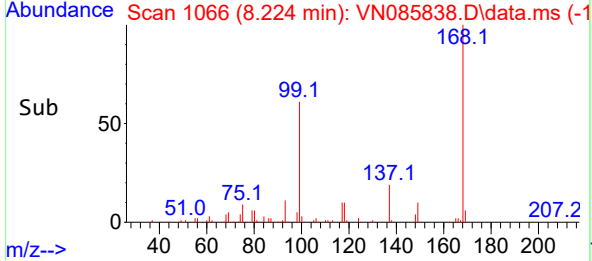
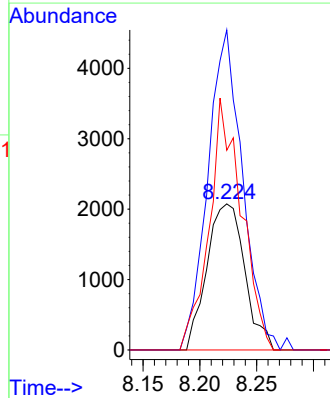
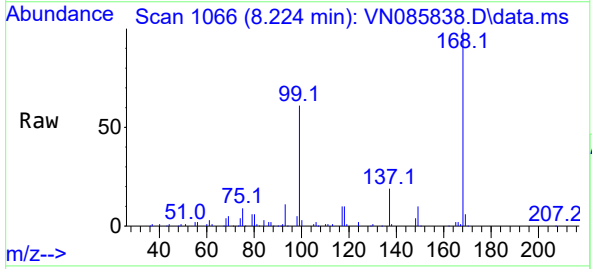


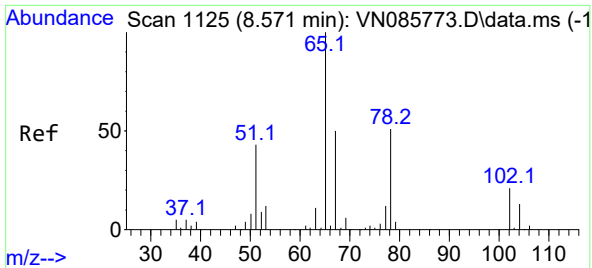
Tgt Ion: 43 Resp: 875
 Ion Ratio Lower Upper
 43 100
 74 6.7 22.2 33.4#



#31
 Cyclohexane
 Concen: 1.22 ug/l
 RT: 8.224 min Scan# 1066
 Delta R.T. -0.030 min
 Lab File: VN085838.D
 Acq: 24 Feb 2025 15:37

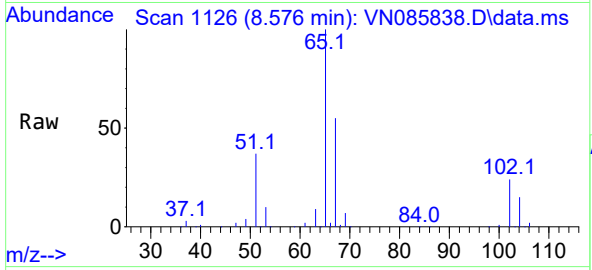
Tgt Ion: 56 Resp: 4811
 Ion Ratio Lower Upper
 56 100
 69 218.9 25.8 38.6#
 84 136.7 74.5 111.7#



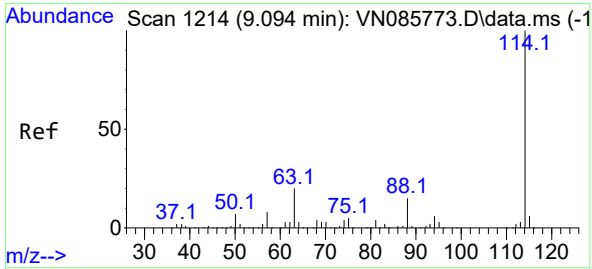
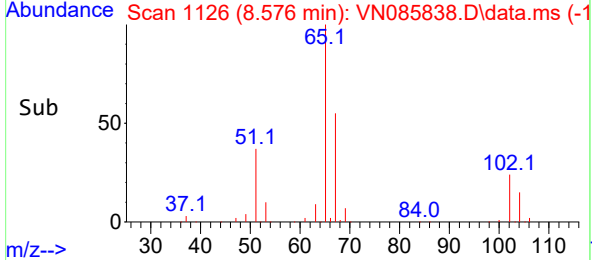
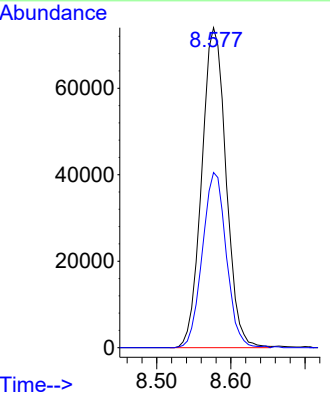


#33
 1,2-Dichloroethane-d4
 Concen: 61.26 ug/l
 RT: 8.576 min Scan# 1125
 Delta R.T. 0.006 min
 Lab File: VN085838.D
 Acq: 24 Feb 2025 15:37

Instrument : MSVOA_X
 ClientSampleId :

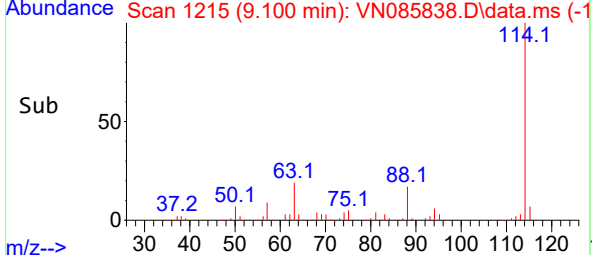
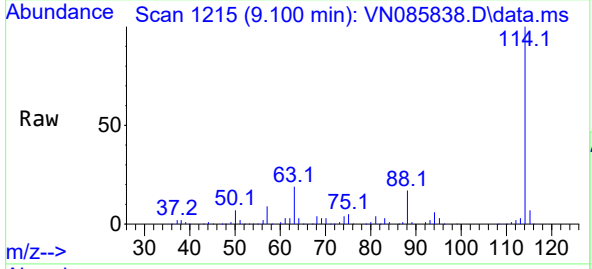
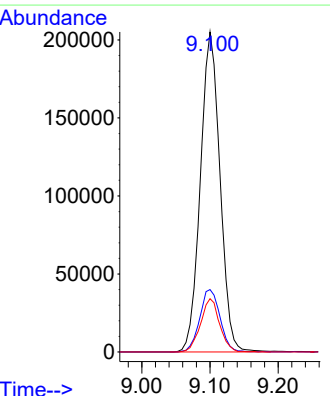


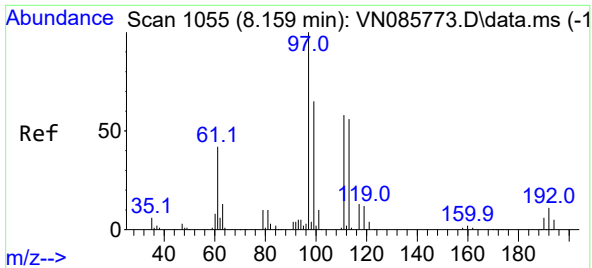
Tgt Ion: 65 Resp: 168666
 Ion Ratio Lower Upper
 65 100
 67 53.8 0.0 106.2



#34
 1,4-Difluorobenzene
 Concen: 50.00 ug/l
 RT: 9.100 min Scan# 1215
 Delta R.T. 0.006 min
 Lab File: VN085838.D
 Acq: 24 Feb 2025 15:37

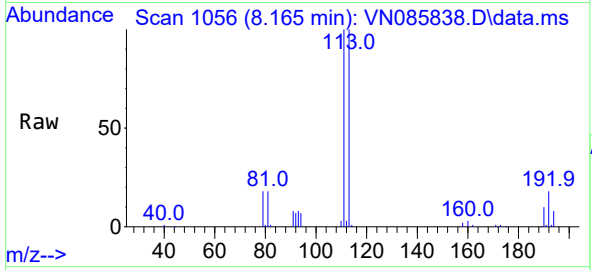
Tgt Ion: 114 Resp: 411076
 Ion Ratio Lower Upper
 114 100
 63 19.5 0.0 39.2
 88 16.7 0.0 30.0



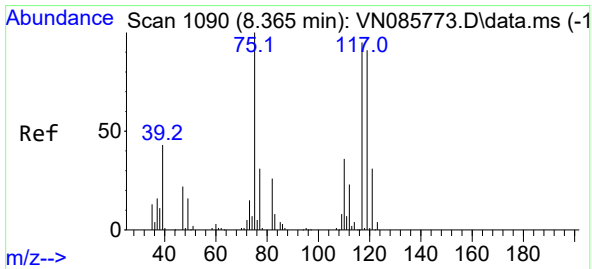
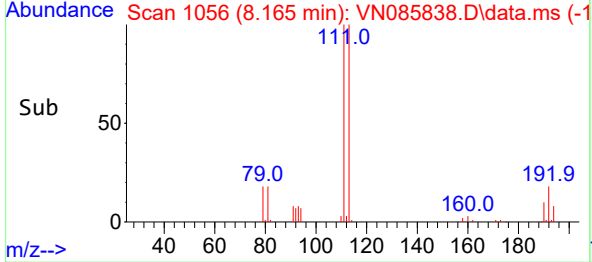
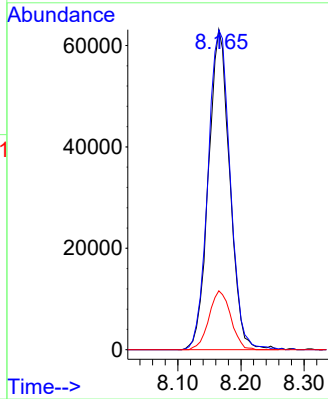


#35
 Dibromofluoromethane
 Concen: 54.93 ug/l
 RT: 8.165 min Scan# 1065
 Delta R.T. 0.006 min
 Lab File: VN085838.D
 Acq: 24 Feb 2025 15:37

Instrument : MSVOA_X
 ClientSampleId :

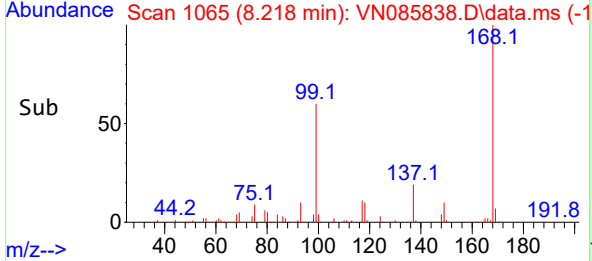
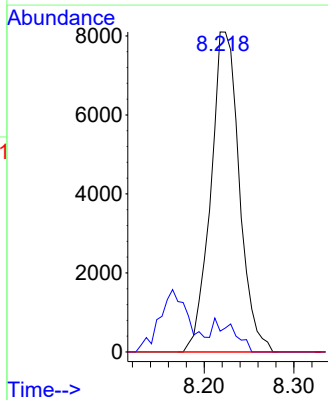
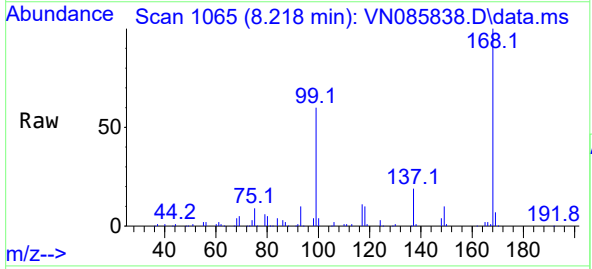


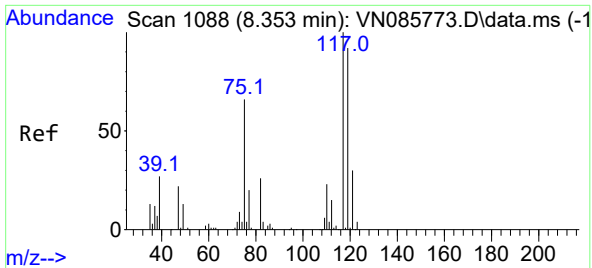
Tgt Ion:113 Resp: 147765
 Ion Ratio Lower Upper
 113 100
 111 104.5 82.2 123.4
 192 18.8 14.7 22.1



#36
 1,1-Dichloropropene
 Concen: 4.71 ug/l
 RT: 8.218 min Scan# 1065
 Delta R.T. -0.147 min
 Lab File: VN085838.D
 Acq: 24 Feb 2025 15:37

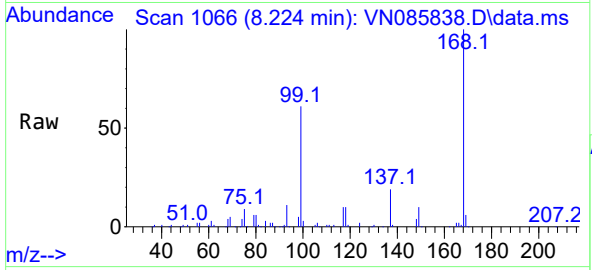
Tgt Ion: 75 Resp: 17918
 Ion Ratio Lower Upper
 75 100
 110 7.3 17.3 52.0#
 77 0.0 24.6 37.0#



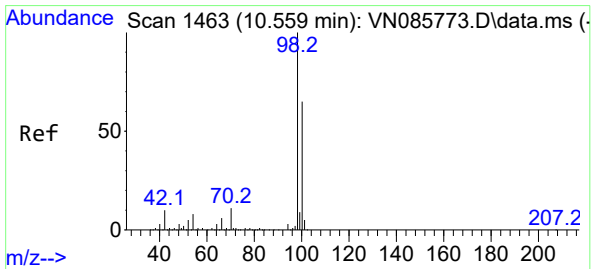
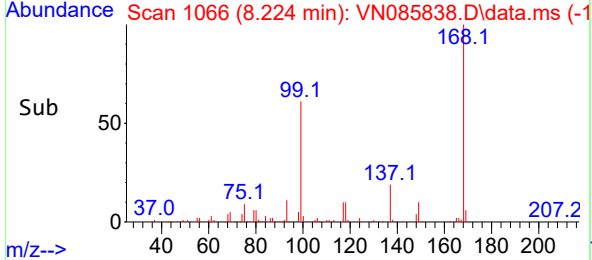
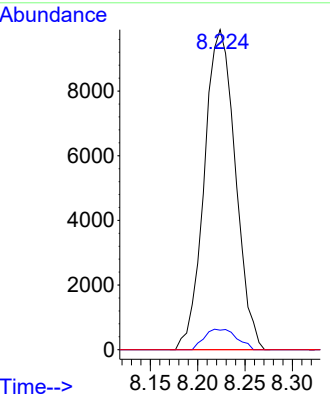


#38
 Carbon Tetrachloride
 Concen: 5.00 ug/l
 RT: 8.224 min Scan# 10
 Delta R.T. -0.130 min
 Lab File: VN085838.D
 Acq: 24 Feb 2025 15:37

Instrument : MSVOA_X
 ClientSampleId :

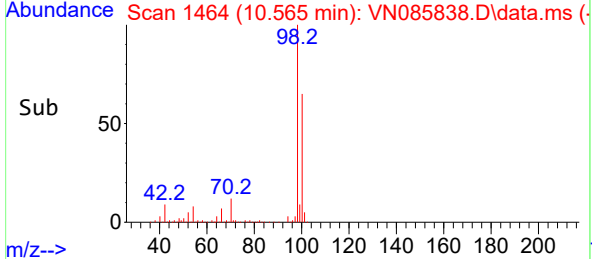
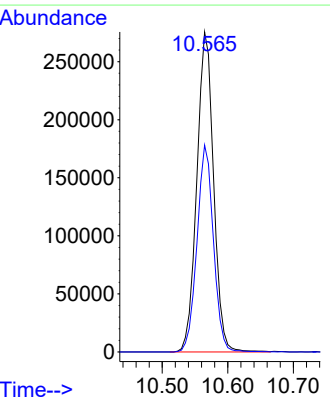
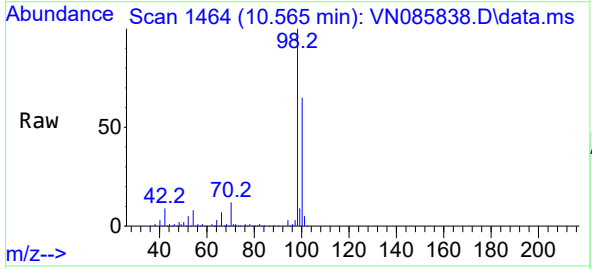


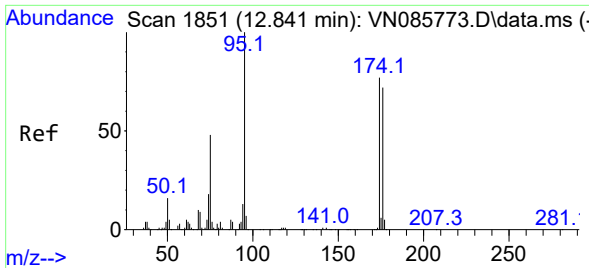
Tgt Ion:117 Resp: 22606
 Ion Ratio Lower Upper
 117 100
 119 6.1 73.8 110.6#
 121 0.0 24.3 36.5#



#50
 Toluene-d8
 Concen: 50.14 ug/l
 RT: 10.565 min Scan# 1464
 Delta R.T. 0.006 min
 Lab File: VN085838.D
 Acq: 24 Feb 2025 15:37

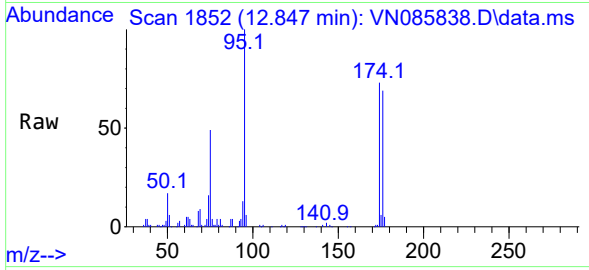
Tgt Ion: 98 Resp: 490740
 Ion Ratio Lower Upper
 98 100
 100 63.5 52.1 78.1



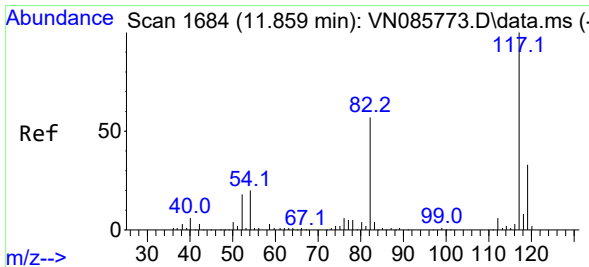
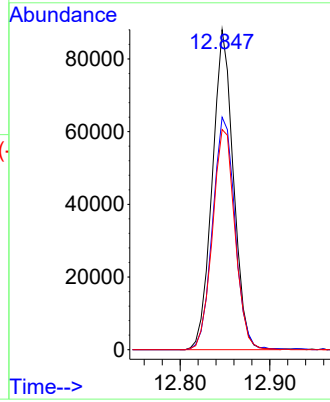
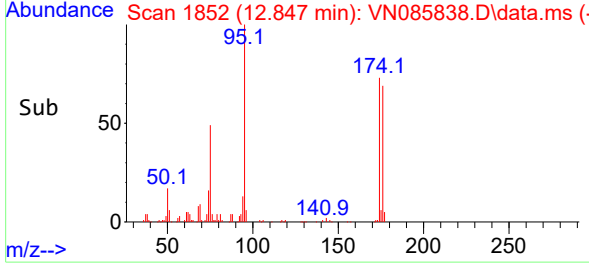


#62
 4-Bromofluorobenzene
 Concen: 44.65 ug/l
 RT: 12.847 min Scan# 11
 Delta R.T. 0.006 min
 Lab File: VN085838.D
 Acq: 24 Feb 2025 15:37

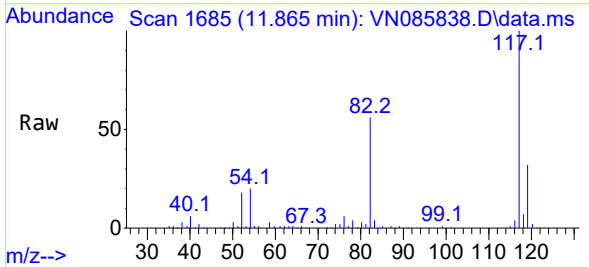
Instrument :
 MSVOA_X
 ClientSampleId :



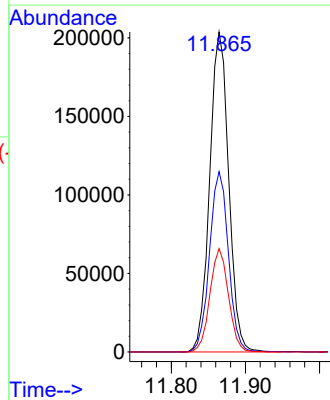
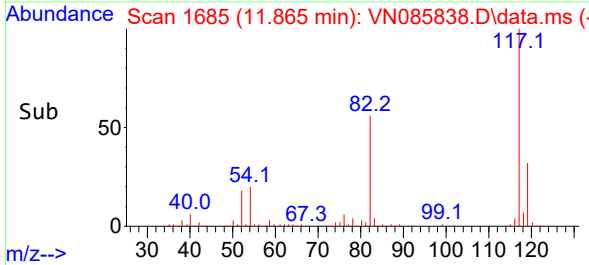
Tgt Ion: 95 Resp: 143968
 Ion Ratio Lower Upper
 95 100
 174 76.8 0.0 152.4
 176 73.1 0.0 146.6

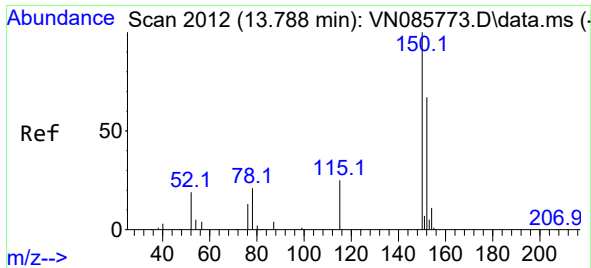


#63
 Chlorobenzene-d5
 Concen: 50.00 ug/l
 RT: 11.865 min Scan# 1685
 Delta R.T. 0.006 min
 Lab File: VN085838.D
 Acq: 24 Feb 2025 15:37



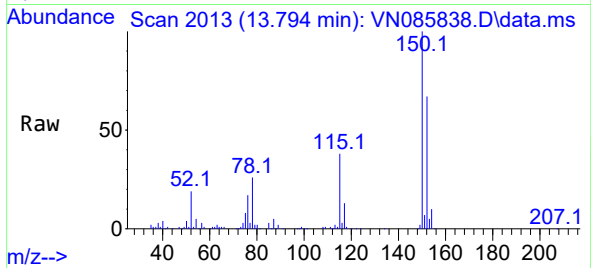
Tgt Ion: 117 Resp: 362397
 Ion Ratio Lower Upper
 117 100
 82 56.4 45.7 68.5
 119 32.3 26.2 39.2



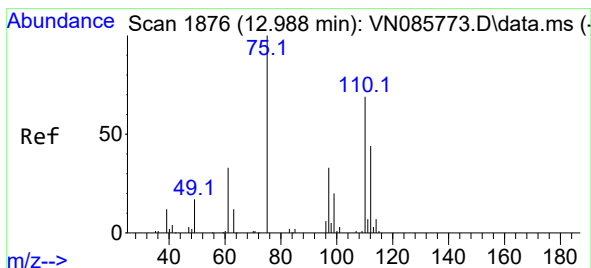
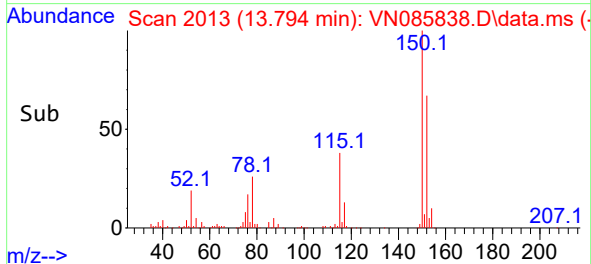
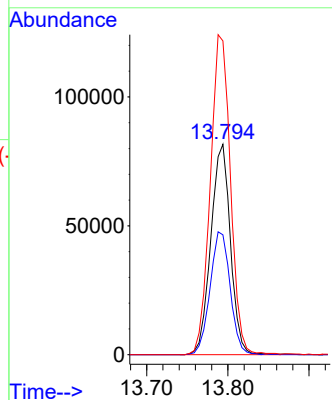


#72
 1,4-Dichlorobenzene-d4
 Concen: 50.00 ug/l
 RT: 13.794 min Scan# 20
 Delta R.T. 0.006 min
 Lab File: VN085838.D
 Acq: 24 Feb 2025 15:37

Instrument :
 MSVOA_X
 ClientSampleId :

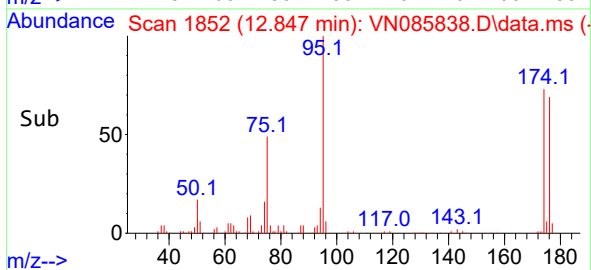
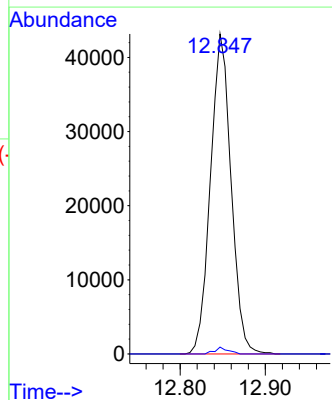
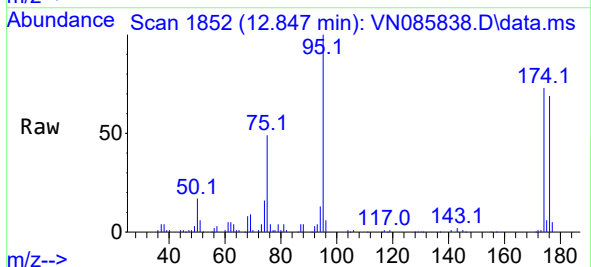


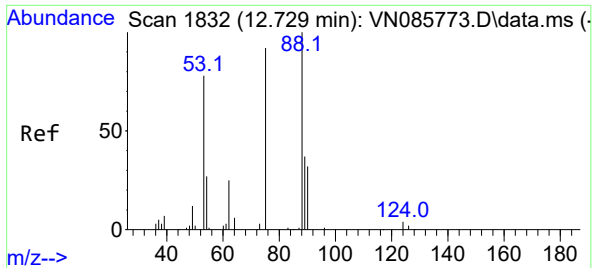
Tgt Ion:152 Resp: 137032
 Ion Ratio Lower Upper
 152 100
 115 59.8 30.4 91.3
 150 156.3 0.0 345.4



#76
 1,2,3-Trichloropropane
 Concen: 23.86 ug/l
 RT: 12.847 min Scan# 1852
 Delta R.T. -0.141 min
 Lab File: VN085838.D
 Acq: 24 Feb 2025 15:37

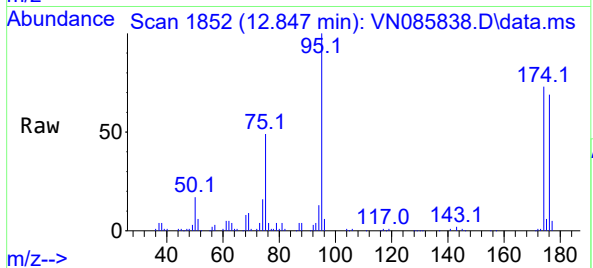
Tgt Ion: 75 Resp: 72640
 Ion Ratio Lower Upper
 75 100
 77 1.4 100.0 300.0#





#81
 trans-1,4-Dichloro-2-butene
 Concen: 69.63 ug/l
 RT: 12.847 min Scan# 11
 Delta R.T. 0.117 min
 Lab File: VN085838.D
 Acq: 24 Feb 2025 15:37

Instrument :
 MSVOA_X
 ClientSampleId :



Tgt Ion: 75 Resp: 72640

Ion	Ratio	Lower	Upper
75	100		
53	0.0	74.2	111.4#
89	0.0	34.9	52.3#

