

Data Path : Z:\voasrv\HPCHEM1\MSVOA_X\Data\VX022222\
 Data File : VX027127.D
 Acq On : 22 Feb 2022 11:10
 Operator : JC/MD
 Sample : VX0222MBL01
 Misc : 5.00g/10.0mL/100uL/5.00mL/MSVOA_X/MEOH
 ALS Vial : 3 Sample Multiplier: 1

Instrument :
 MSVOA_X
 ClientSampleId :
 VX0222MBL01

Integration Parameters: RTEINT.P

Integrator: RTE
 Smoothing : ON Filtering: 5
 Sampling : 1 Min Area: 3 % of largest Peak
 Start Thrs: 0.2 Max Peaks: 100
 Stop Thrs : 0 Peak Location: TOP

If leading or trailing edge < 100 prefer < Baseline drop else tangent >
 Peak separation: 5

Method : Z:\voasrv\HPCHEM1\MSVOA_X\Method\82X020822W.M
 Title : SW846 8260

Signal : TIC: VX027127.D\data.ms

peak #	R.T. min	first scan	max scan	last scan	PK TY	peak height	corr. area	corr. % max.	% of total
1	5.385	693	705	718	rBV	60439	177864	34.92%	6.545%
2	5.556	721	733	744	rBV	107302	302392	59.37%	11.128%
3	5.958	788	799	814	rBV	64200	171725	33.71%	6.320%
4	6.763	921	931	950	rBV	164412	389183	76.41%	14.322%
5	8.647	1234	1240	1250	rBV	330324	509351	100.00%	18.744%
6	10.055	1465	1471	1483	rBV	332894	440306	86.44%	16.203%
7	11.079	1634	1639	1651	rBV	249895	328876	64.57%	12.103%
8	12.024	1789	1794	1807	rBV	330974	397666	78.07%	14.634%

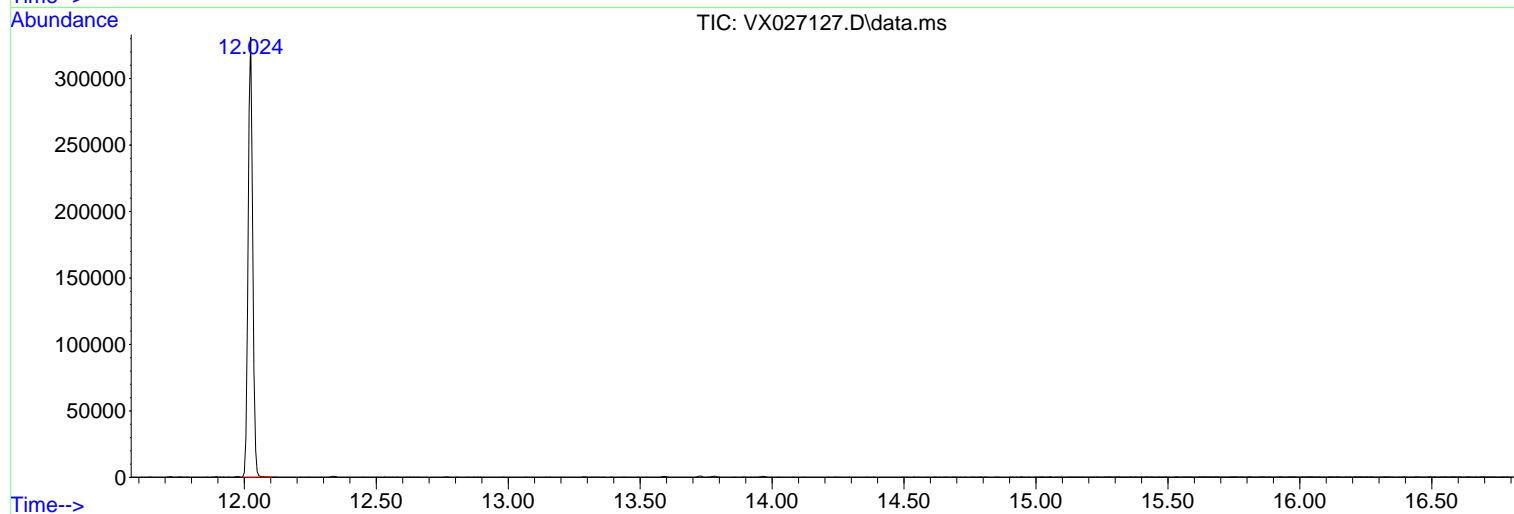
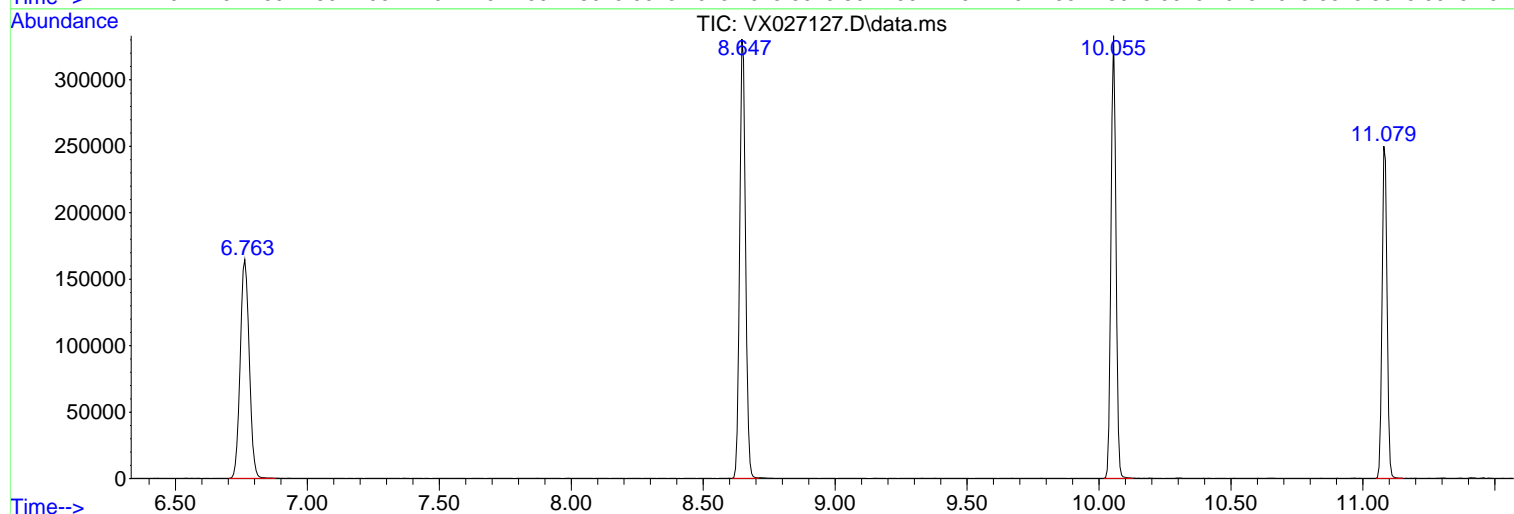
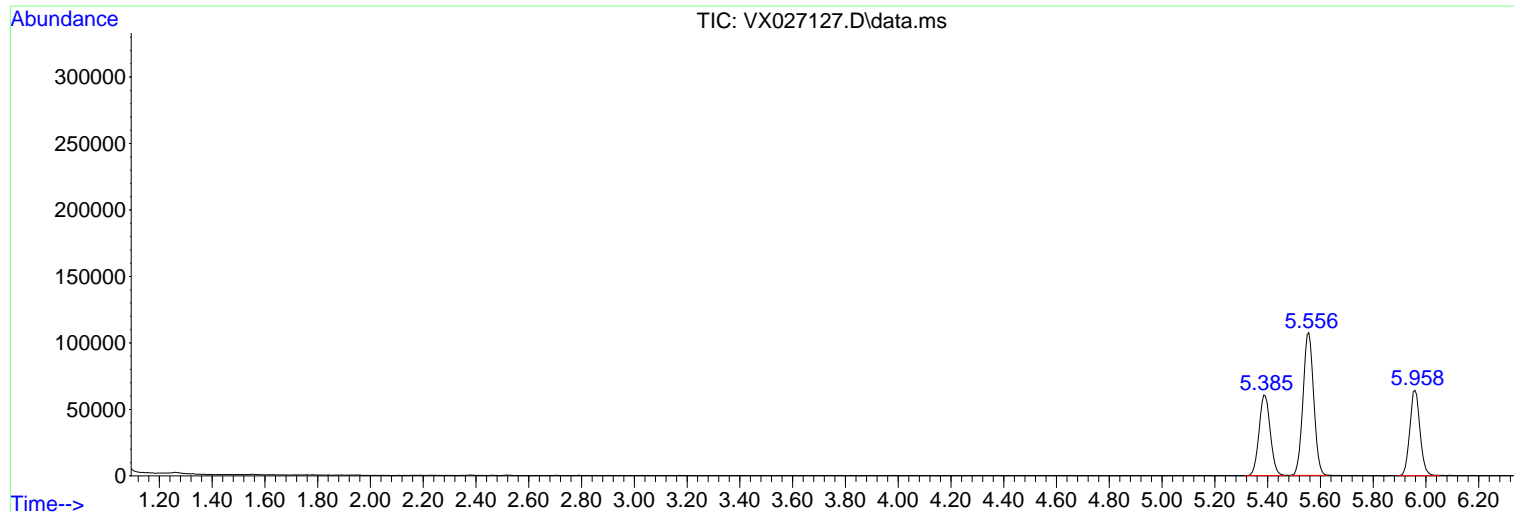
Sum of corrected areas: 2717363

Data Path : Z:\voasrv\HPCHEM1\MSVOA_X\Data\VX022222\
Data File : VX027127.D
Acq On : 22 Feb 2022 11:10
Operator : JC/MD
Sample : VX0222MBL01
Misc : 5.00g/10.0mL/100uL/5.00mL/MSVOA_X/MEOH
ALS Vial : 3 Sample Multiplier: 1

Instrument :
MSVOA_X
ClientSampleId :
VX0222MBL01

Quant Method : Z:\voasrv\HPCHEM1\MSVOA_X\Method\82X020822W.M
Quant Title : SW846 8260

TIC Library : C:\Database\NIST20.L
TIC Integration Parameters: LSCINT.P



Library Search Compound Report

Data Path : Z:\voasrv\HPCHEM1\MSVOA_X\Data\VX022222\
Data File : VX027127.D
Acq On : 22 Feb 2022 11:10
Operator : JC/MD
Sample : VX0222MBL01
Misc : 5.00g/10.0mL/100uL/5.00mL/MSVOA_X/MEOH
ALS Vial : 3 Sample Multiplier: 1

Instrument :
MSVOA_X
ClientSampleId :
VX0222MBL01

Quant Method : Z:\voasrv\HPCHEM1\MSVOA_X\Method\82X020822W.M
Quant Title : SW846 8260

TIC Library : C:\Database\NIST20.L
TIC Integration Parameters: LSCINT.P

No Library Search Compounds Detected

Data Path : Z:\voasrv\HPCHEM1\MSVOA_X\Data\VX022222\
Data File : VX027127.D
Acq On : 22 Feb 2022 11:10
Operator : JC/MD
Sample : VX0222MBL01
Misc : 5.00g/10.0mL/100uL/5.00mL/MSVOA_X/MEOH
ALS Vial : 3 Sample Multiplier: 1

Instrument :
MSVOA_X
ClientSampleId :
VX0222MBL01

Quant Method : Z:\voasrv\HPCHEM1\MSVOA_X\Method\82X020822W.M
Quant Title : SW846 8260

TIC Library : C:\Database\NIST20.L
TIC Integration Parameters: LSCINT.P

TIC Top Hit name	RT	EstConc	Units	Response	--Internal Standard--			
					#	RT	Resp	Conc
