

Data Path : Z:\voasrv\HPCHEM1\MSVOA_X\Data\VX022323\
 Data File : VX034240.D
 Acq On : 23 Feb 2023 11:18
 Operator : JC/MD
 Sample : VX0223WBL01
 Misc : 5.0mL/MSVOA_X/WATER
 ALS Vial : 4 Sample Multiplier: 1

Instrument :
 MSVOA_X
 ClientSampleId :
 VX0223WBL01

Integration Parameters: RTEINT.P
 Integrator: RTE
 Smoothing : ON Filtering: 5
 Sampling : 1 Min Area: 3 % of largest Peak
 Start Thrs: 0.2 Max Peaks: 100
 Stop Thrs : 0 Peak Location: TOP

If leading or trailing edge < 100 prefer < Baseline drop else tangent >
 Peak separation: 5

Method : Z:\voasrv\HPCHEM1\MSVOA_X\Method\82X021723W.M
 Title : SW846 8260

Signal : TIC: VX034240.D\data.ms

peak #	R.T. min	first scan	max scan	last scan	PK TY	peak height	corr. area	corr. % max.	% of total
1	5.385	693	705	721	rBV	172717	505211	33.02%	6.435%
2	5.550	721	732	750	rVB	294076	832635	54.42%	10.605%
3	5.958	787	799	812	rBV	192710	506422	33.10%	6.450%
4	6.763	921	931	949	rBV	456775	1106396	72.32%	14.092%
5	8.647	1233	1240	1256	rBV	987292	1529951	100.00%	19.486%
6	10.055	1465	1471	1488	rBV	939605	1282557	83.83%	16.335%
7	11.079	1634	1639	1653	rBV	761174	952368	62.25%	12.130%
8	12.018	1788	1793	1805	rBV	852127	1135864	74.24%	14.467%

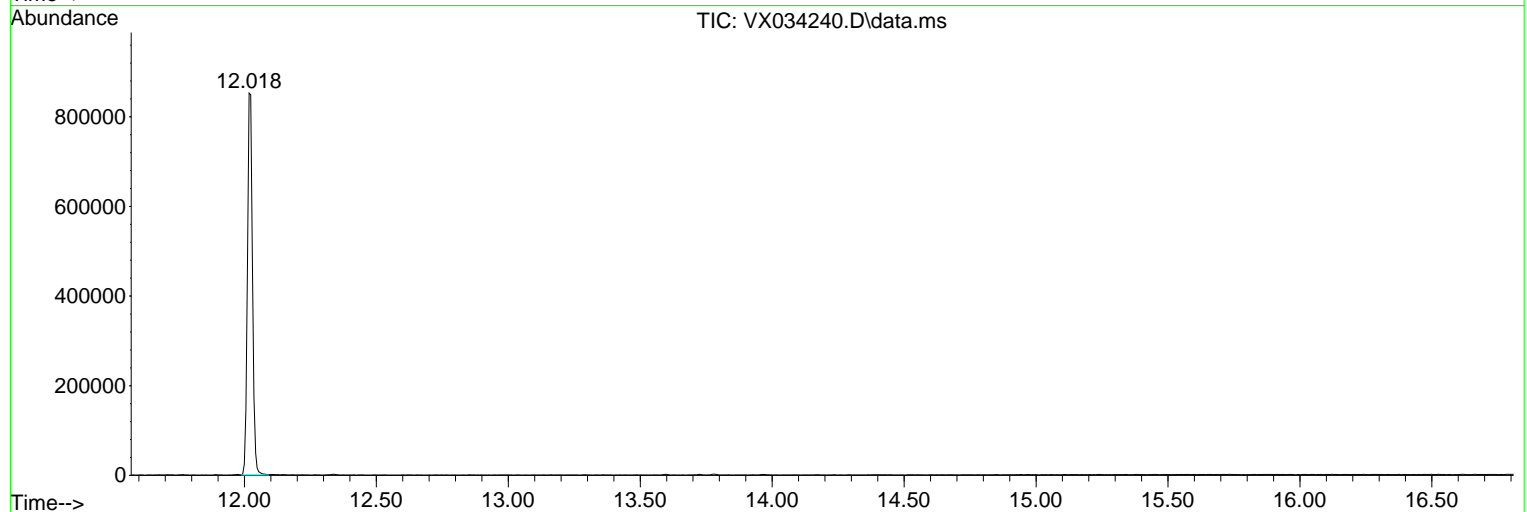
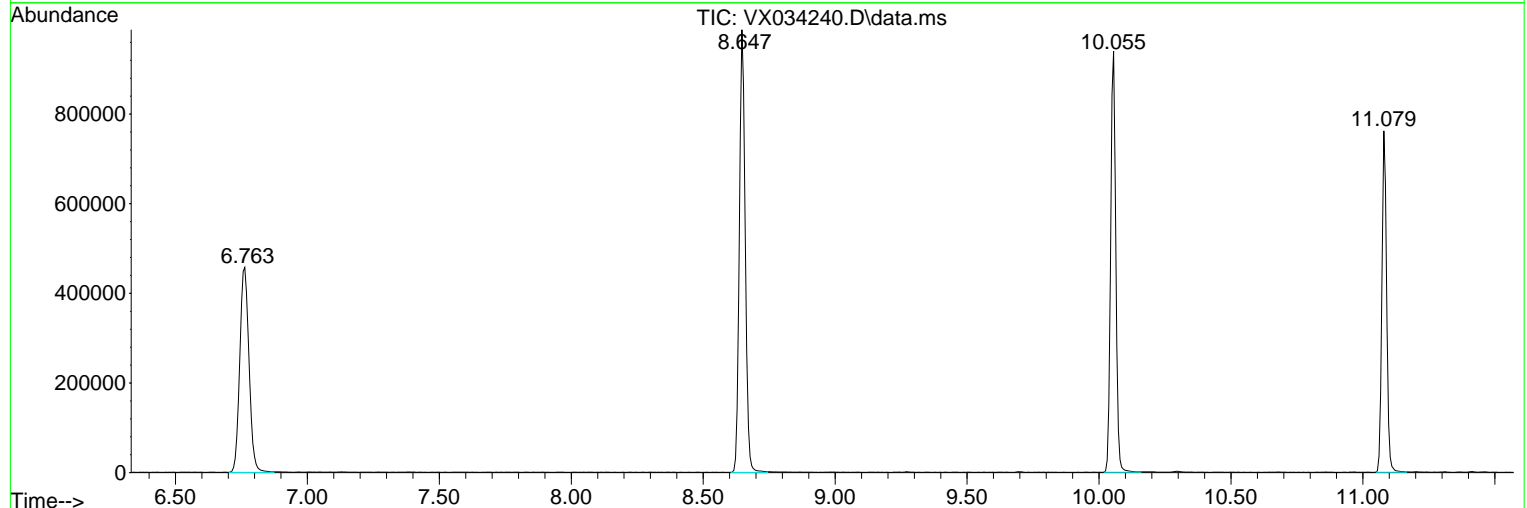
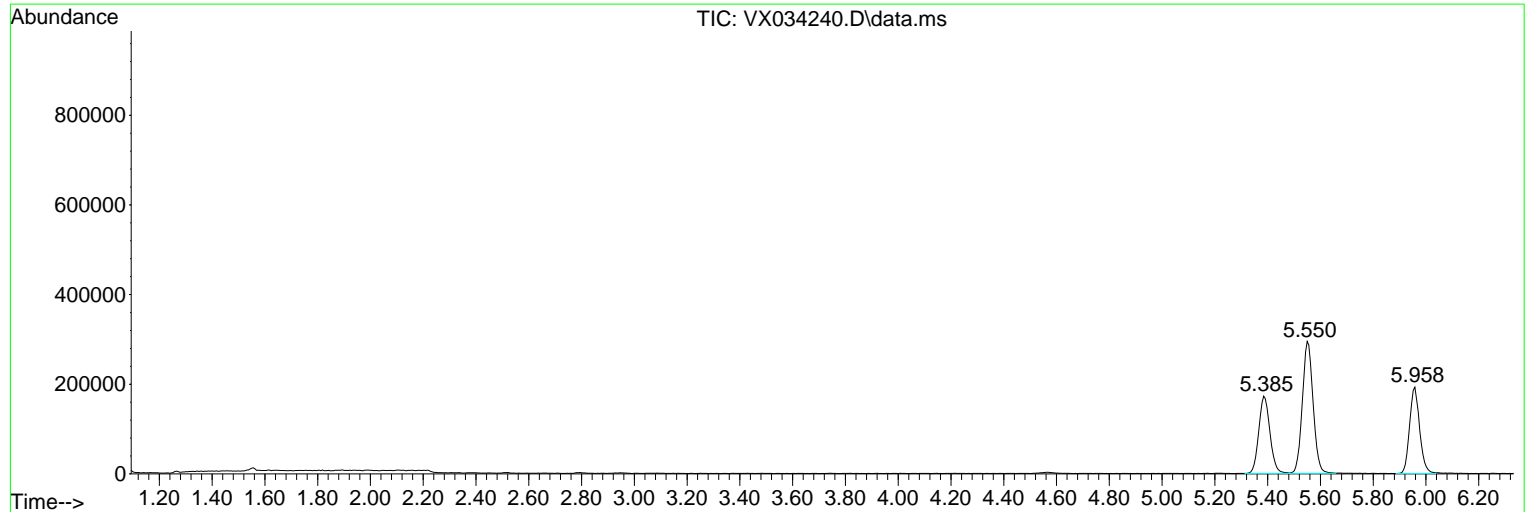
Sum of corrected areas: 7851404

Data Path : Z:\voasrv\HPCHEM1\MSVOA_X\Data\VX022323\
 Data File : VX034240.D
 Acq On : 23 Feb 2023 11:18
 Operator : JC/MD
 Sample : VX0223WBL01
 Misc : 5.0mL/MSVOA_X/WATER
 ALS Vial : 4 Sample Multiplier: 1

Instrument :
 MSVOA_X
ClientSampleId :
 VX0223WBL01

Quant Method : Z:\voasrv\HPCHEM1\MSVOA_X\Method\82X021723W.M
 Quant Title : SW846 8260

TIC Library : C:\Database\NIST20.L
 TIC Integration Parameters: LSCINT.P



Library Search Compound Report

Data Path : Z:\voasrv\HPCHEM1\MSVOA_X\Data\VX022323\
Data File : VX034240.D
Acq On : 23 Feb 2023 11:18
Operator : JC/MD
Sample : VX0223WBL01
Misc : 5.0mL/MSVOA_X/WATER
ALS Vial : 4 Sample Multiplier: 1

Instrument :
MSVOA_X
ClientSampleId :
VX0223WBL01

Quant Method : Z:\voasrv\HPCHEM1\MSVOA_X\Method\82X021723W.M
Quant Title : SW846 8260

TIC Library : C:\Database\NIST20.L
TIC Integration Parameters: LSCINT.P

No Library Search Compounds Detected

Data Path : Z:\voasrv\HPCHEM1\MSVOA_X\Data\VX022323\
Data File : VX034240.D
Acq On : 23 Feb 2023 11:18
Operator : JC/MD
Sample : VX0223WBL01
Misc : 5.0mL/MSVOA_X/WATER
ALS Vial : 4 Sample Multiplier: 1

Instrument :
MSVOA_X
ClientSampleId :
VX0223WBL01

Quant Method : Z:\voasrv\HPCHEM1\MSVOA_X\Method\82X021723W.M
Quant Title : SW846 8260

TIC Library : C:\Database\NIST0.L
TIC Integration Parameters: LSCINT.P

TIC Top Hit name	RT	EstConc	Units	Response	--Internal Standard--		
					#	RT	Resp Conc
