

Data Path : Z:\voasrv\HPCHEM1\MSVOA\_X\Data\VX022525\  
 Data File : VX045031.D  
 Acq On : 25 Feb 2025 12:07  
 Operator : JC/MD  
 Sample : VX0225WBL01  
 Misc : 5.0mL/MSVOA\_X/WATER  
 ALS Vial : 4 Sample Multiplier: 1

Instrument :  
 MSVOA\_X  
 ClientSampleId :  
 VX0225WBL01

Integration Parameters: RTEINT.P

Integrator: RTE  
 Smoothing : ON Filtering: 5  
 Sampling : 1 Min Area: 3 % of largest Peak  
 Start Thrs: 0.2 Max Peaks: 100  
 Stop Thrs : 0 Peak Location: TOP

If leading or trailing edge < 100 prefer < Baseline drop else tangent >  
 Peak separation: 5

Method : Z:\voasrv\HPCHEM1\MSVOA\_X\Method\82X021025W.M  
 Title : SW846 8260

Signal : TIC: VX045031.D\data.ms

peak #	R.T. min	first scan	max scan	last scan	PK TY	peak height	corr. area	corr. % max.	% of total
1	1.240	21	25	32	rBV	21585	31148	6.10%	1.169%
2	1.563	73	78	79	rBV3	3605	5414	1.06%	0.203%
3	1.587	79	82	87	rVB5	4768	7850	1.54%	0.295%
4	2.940	297	304	312	rVB2	3582	7586	1.49%	0.285%
5	5.379	693	704	719	rBV	58025	172629	33.79%	6.480%
6	5.544	721	731	751	rVV	82636	242122	47.40%	9.089%
7	5.952	788	798	811	rBV2	65120	174987	34.25%	6.569%
8	6.757	922	930	947	rBV	151438	375714	73.55%	14.104%
9	8.647	1233	1240	1262	rBV	312615	510838	100.00%	19.176%
10	10.049	1465	1470	1490	rBV	316434	453723	88.82%	17.032%
11	11.079	1634	1639	1651	rBV	240960	308728	60.44%	11.589%
12	12.018	1788	1793	1808	rBV	296675	373222	73.06%	14.010%

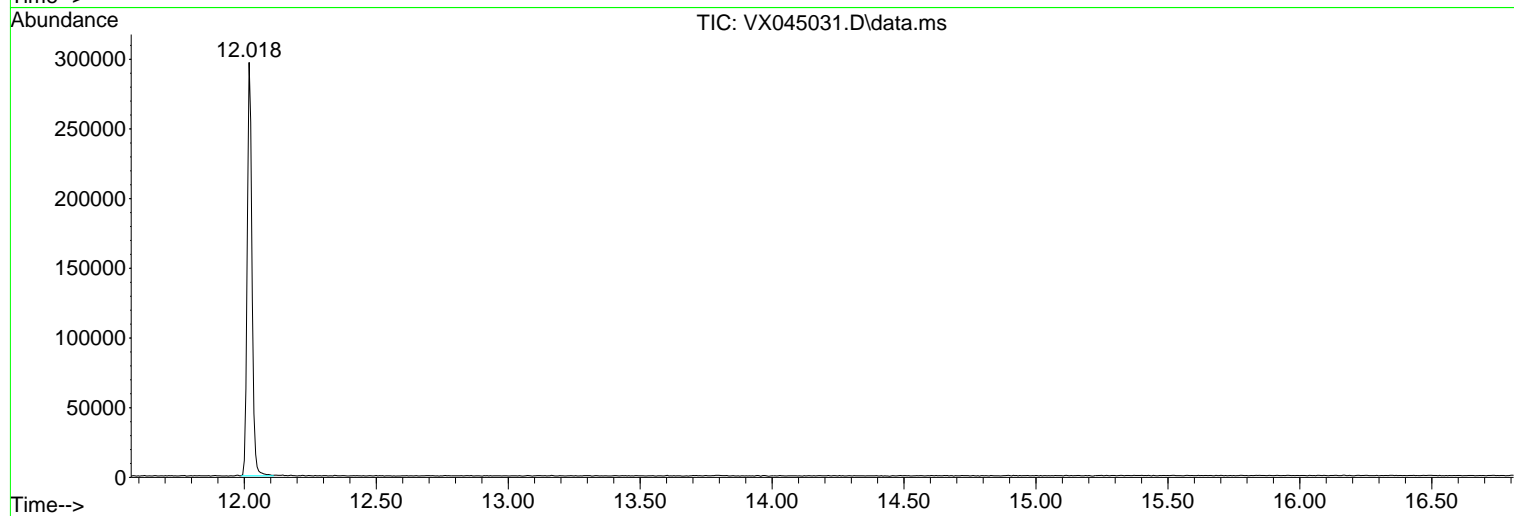
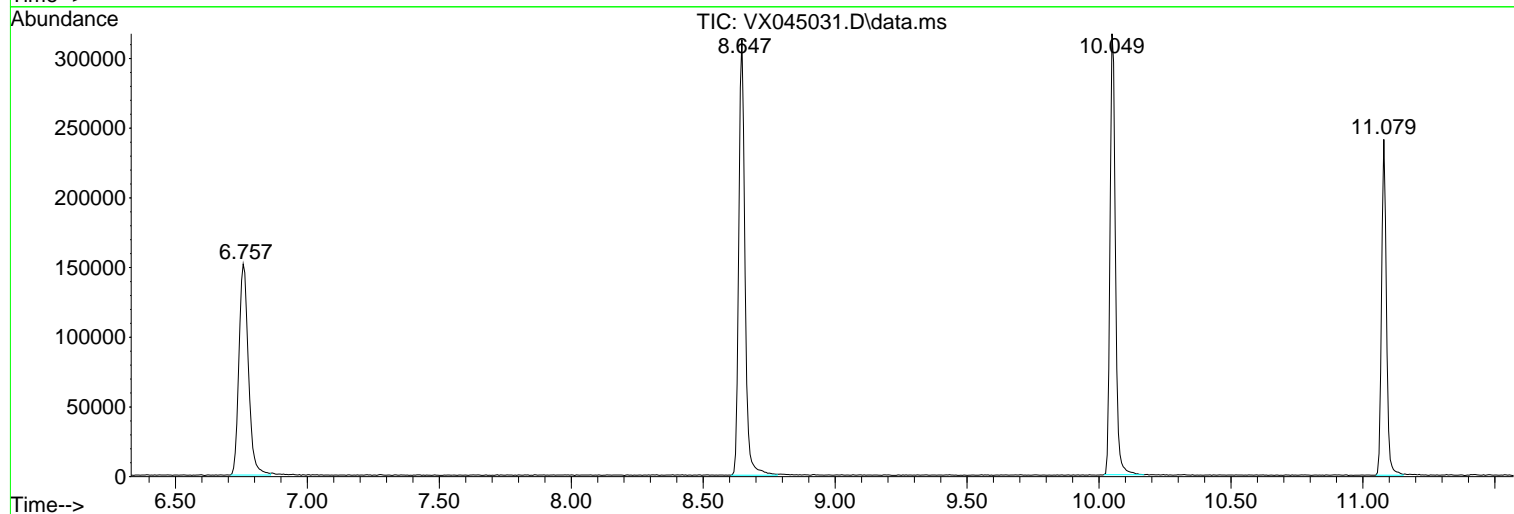
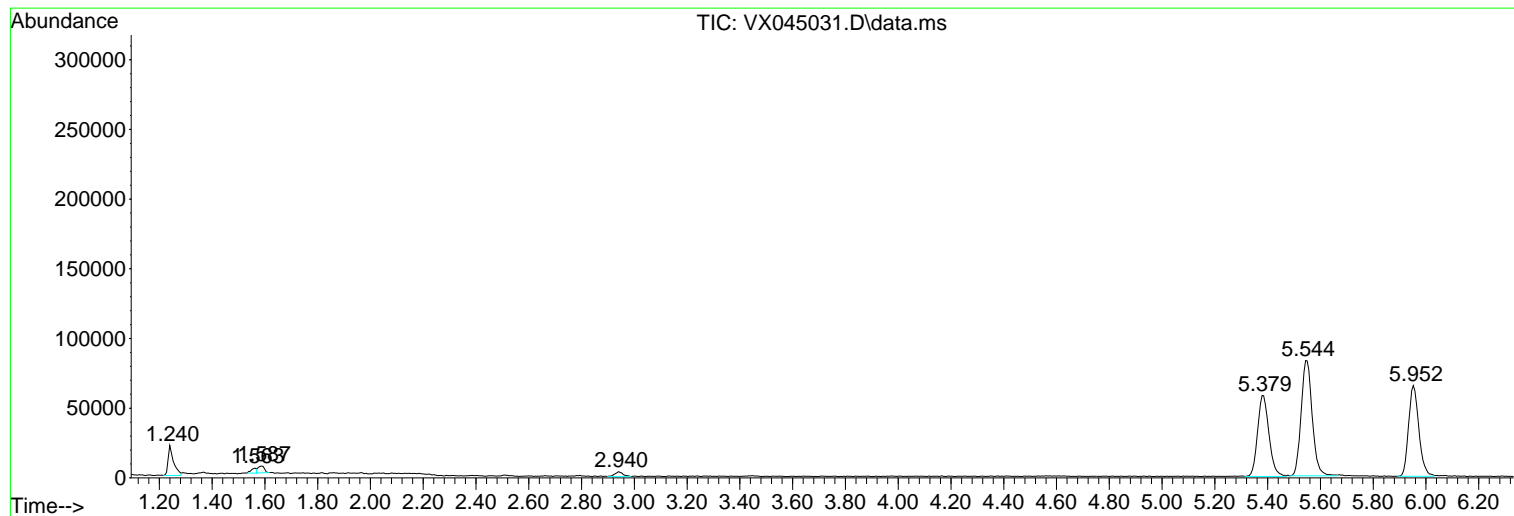
Sum of corrected areas: 2663961

Data Path : Z:\voasrv\HPCHEM1\MSVOA\_X\Data\VX022525\  
Data File : VX045031.D  
Acq On : 25 Feb 2025 12:07  
Operator : JC/MD  
Sample : VX0225WBL01  
Misc : 5.0mL/MSVOA\_X/WATER  
ALS Vial : 4 Sample Multiplier: 1

Instrument :  
MSVOA\_X  
ClientSampleId :  
VX0225WBL01

Quant Method : Z:\voasrv\HPCHEM1\MSVOA\_X\Method\82X021025W.M  
Quant Title : SW846 8260

TIC Library : C:\Database\NIST20.L  
TIC Integration Parameters: LSCINT.P



Data Path : Z:\voasrv\HPCHEM1\MSVOA\_X\Data\VX022525\  
Data File : VX045031.D  
Acq On : 25 Feb 2025 12:07  
Operator : JC/MD  
Sample : VX0225WBL01  
Misc : 5.0mL/MSVOA\_X/WATER  
ALS Vial : 4 Sample Multiplier: 1

**Instrument :**  
MSVOA\_X  
**ClientSampleId :**  
VX0225WBL01

Quant Method : Z:\voasrv\HPCHEM1\MSVOA\_X\Method\82X021025W.M  
Quant Title : SW846 8260

TIC Library : C:\Database\NIST0.L  
TIC Integration Parameters: LSCINT.P

No Library Search Compounds Detected

\*\*\*\*\*

Data Path : Z:\voasrv\HPCHEM1\MSVOA\_X\Data\VX022525\  
Data File : VX045031.D  
Acq On : 25 Feb 2025 12:07  
Operator : JC/MD  
Sample : VX0225WBL01  
Misc : 5.0mL/MSVOA\_X/WATER  
ALS Vial : 4 Sample Multiplier: 1

Instrument :  
MSVOA\_X  
ClientSampleId :  
VX0225WBL01

Quant Method : Z:\voasrv\HPCHEM1\MSVOA\_X\Method\82X021025W.M  
Quant Title : SW846 8260

TIC Library : C:\Database\NIST0.L  
TIC Integration Parameters: LSCINT.P

TIC Top Hit name	RT	EstConc	Units	Response	--Internal Standard--			
					#	RT	Resp	Conc

---