

Data Path : Z:\voasrv\HPCHEM1\MSVOA\_X\Data\VX022525\  
 Data File : VX045035.D  
 Acq On : 25 Feb 2025 13:44  
 Operator : JC/MD  
 Sample : Q1401-01  
 Misc : 5.0mL/MSVOA\_X/WATER  
 ALS Vial : 8 Sample Multiplier: 1

Instrument :  
 MSVOA\_X  
 ClientSampleId :  
 BP-VPB-192-TB-20250217

Integration Parameters: RTEINT.P

Integrator: RTE  
 Smoothing : ON Filtering: 5  
 Sampling : 1 Min Area: 3 % of largest Peak  
 Start Thrs: 0.2 Max Peaks: 100  
 Stop Thrs : 0 Peak Location: TOP

If leading or trailing edge < 100 prefer < Baseline drop else tangent >  
 Peak separation: 5

Method : Z:\voasrv\HPCHEM1\MSVOA\_X\Method\82X021025W.M  
 Title : SW846 8260

Signal : TIC: VX045035.D\data.ms

peak #	R.T. min	first scan	max scan	last scan	PK TY	peak height	corr. area	corr. % max.	% of total
1	1.239	21	25	34	rBV	19369	28976	5.79%	1.078%
2	1.587	71	82	83	rBV6	4995	13842	2.76%	0.515%
3	5.385	695	705	720	rBV2	58403	170537	34.05%	6.346%
4	5.550	722	732	747	rVV	86670	248962	49.72%	9.264%
5	5.952	789	798	815	rBV2	65687	175277	35.00%	6.522%
6	6.757	920	930	945	rBV	157055	384376	76.76%	14.303%
7	8.647	1233	1240	1256	rBV	317639	500771	100.00%	18.634%
8	10.049	1465	1470	1488	rBV	324692	465437	92.94%	17.319%
9	11.079	1634	1639	1653	rBV	240105	310059	61.92%	11.538%
10	12.018	1788	1793	1806	rBV	295034	389124	77.70%	14.480%

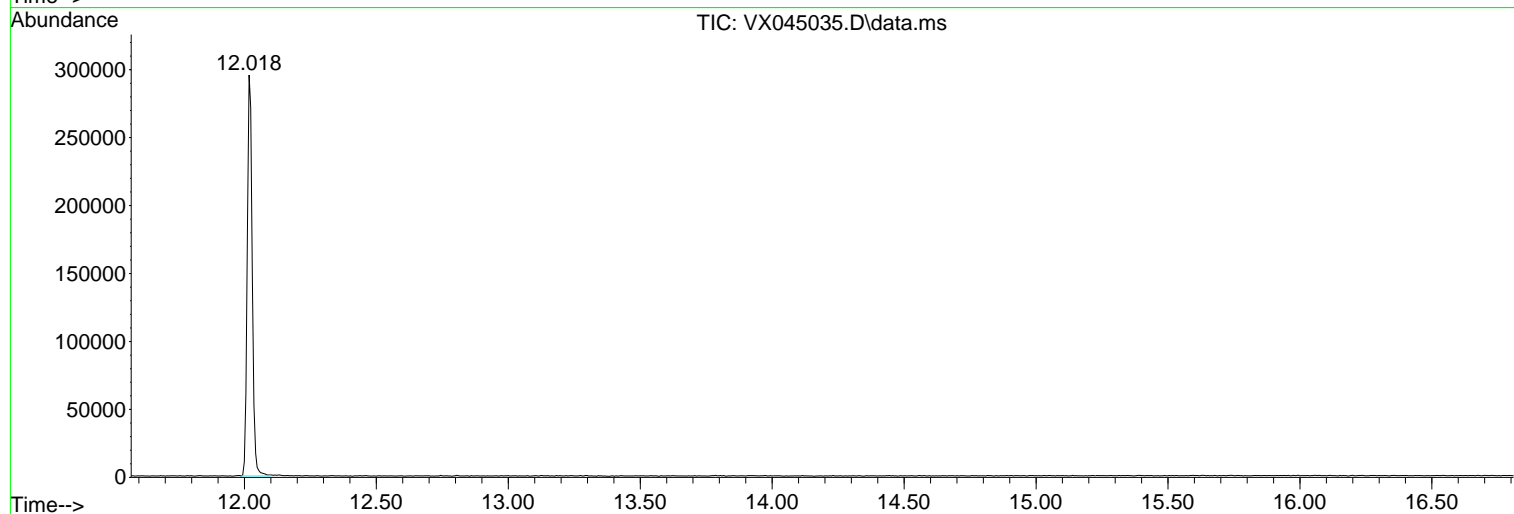
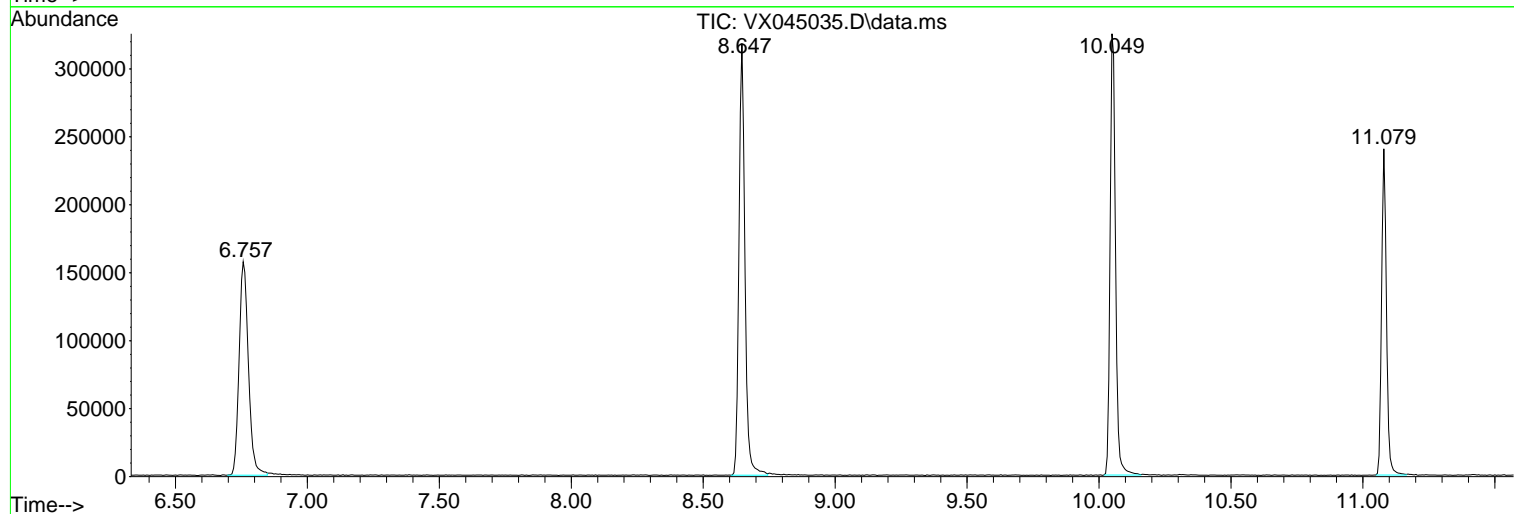
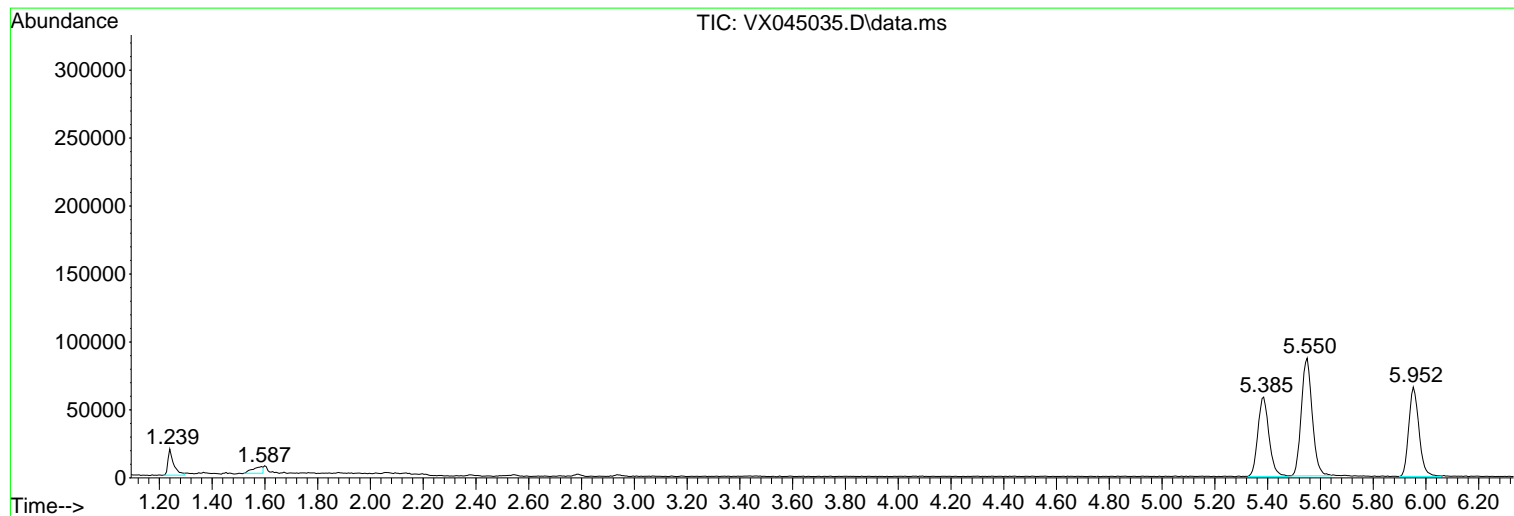
Sum of corrected areas: 2687361

Data Path : Z:\voasrv\HPCHEM1\MSVOA\_X\Data\VX022525\  
Data File : VX045035.D  
Acq On : 25 Feb 2025 13:44  
Operator : JC/MD  
Sample : Q1401-01  
Misc : 5.0mL/MSVOA\_X/WATER  
ALS Vial : 8 Sample Multiplier: 1

Instrument :  
MSVOA\_X  
ClientSampleId :  
BP-VPB-192-TB-20250217

Quant Method : Z:\voasrv\HPCHEM1\MSVOA\_X\Method\82X021025W.M  
Quant Title : SW846 8260

TIC Library : C:\Database\NIST20.L  
TIC Integration Parameters: LSCINT.P



Library Search Compound Report

Data Path : Z:\voasrv\HPCHEM1\MSVOA\_X\Data\VX022525\  
Data File : VX045035.D  
Acq On : 25 Feb 2025 13:44  
Operator : JC/MD  
Sample : Q1401-01  
Misc : 5.0mL/MSVOA\_X/WATER  
ALS Vial : 8 Sample Multiplier: 1

Instrument :  
MSVOA\_X  
ClientSampleId :  
BP-VPB-192-TB-20250217

Quant Method : Z:\voasrv\HPCHEM1\MSVOA\_X\Method\82X021025W.M  
Quant Title : SW846 8260

TIC Library : C:\Database\NIST20.L  
TIC Integration Parameters: LSCINT.P

No Library Search Compounds Detected

\*\*\*\*\*

Data Path : Z:\voasrv\HPCHEM1\MSVOA\_X\Data\VX022525\  
Data File : VX045035.D  
Acq On : 25 Feb 2025 13:44  
Operator : JC/MD  
Sample : Q1401-01  
Misc : 5.0mL/MSVOA\_X/WATER  
ALS Vial : 8 Sample Multiplier: 1

Instrument :  
MSVOA\_X  
ClientSampleId :  
BP-VPB-192-TB-20250217

Quant Method : Z:\voasrv\HPCHEM1\MSVOA\_X\Method\82X021025W.M  
Quant Title : SW846 8260

TIC Library : C:\Database\NIST20.L  
TIC Integration Parameters: LSCINT.P

TIC Top Hit name	RT	EstConc	Units	Response	--Internal Standard--			
					#	RT	Resp	Conc

---