

Data Path : Z:\VOASRV\HPCHEM1\MSVOA X\DATA\VX022719\  
 Data File : VX007739.D  
 Acq On : 27 Feb 2019 17:38  
 Operator : JC/SP  
 Sample : K1628-03ME  
 Misc : 6.49µ/5mL/100uL/5.00mL/MSVOA\_X/MEOH  
 ALS Vial : 11 Sample Multiplier: 1

Instrument :  
 MSVOA\_X  
 ClientSampleId :

Quant Time: Feb 28 03:59:45 2019  
 Quant Method : Z:\VOASRV\HPCHEM1\MSVOA\_X\METHOD\82X022519W.M  
 Quant Title : SW846 8260  
 QLast Update : Tue Feb 26 01:53:13 2019  
 Response via : Initial Calibration

Internal Standards	R.T.	QIon	Response	Conc	Units	Dev(Min)
1) Pentafluorobenzene	5.65	168	258059	50.00	ug/l	-0.01
34) 1,4-Difluorobenzene	6.86	114	398551	50.00	ug/l	0.00
63) Chlorobenzene-d5	10.12	117	389661	50.00	ug/l	0.00
72) 1,4-Dichlorobenzene-d4	12.08	152	208631	50.00	ug/l	0.00

## System Monitoring Compounds

33) 1,2-Dichloroethane-d4	6.07	65	155477	48.64	ug/l	0.00
Spiked Amount	50.000		Recovery	=	97.28%	
35) Dibromofluoromethane	5.50	113	123718	46.44	ug/l	0.00
Spiked Amount	50.000		Recovery	=	92.88%	
50) Toluene-d8	8.71	98	496103	48.64	ug/l	0.00
Spiked Amount	50.000		Recovery	=	97.28%	
62) 4-Bromofluorobenzene	11.14	95	189111	50.52	ug/l	0.00
Spiked Amount	50.000		Recovery	=	101.04%	

## Target Compounds

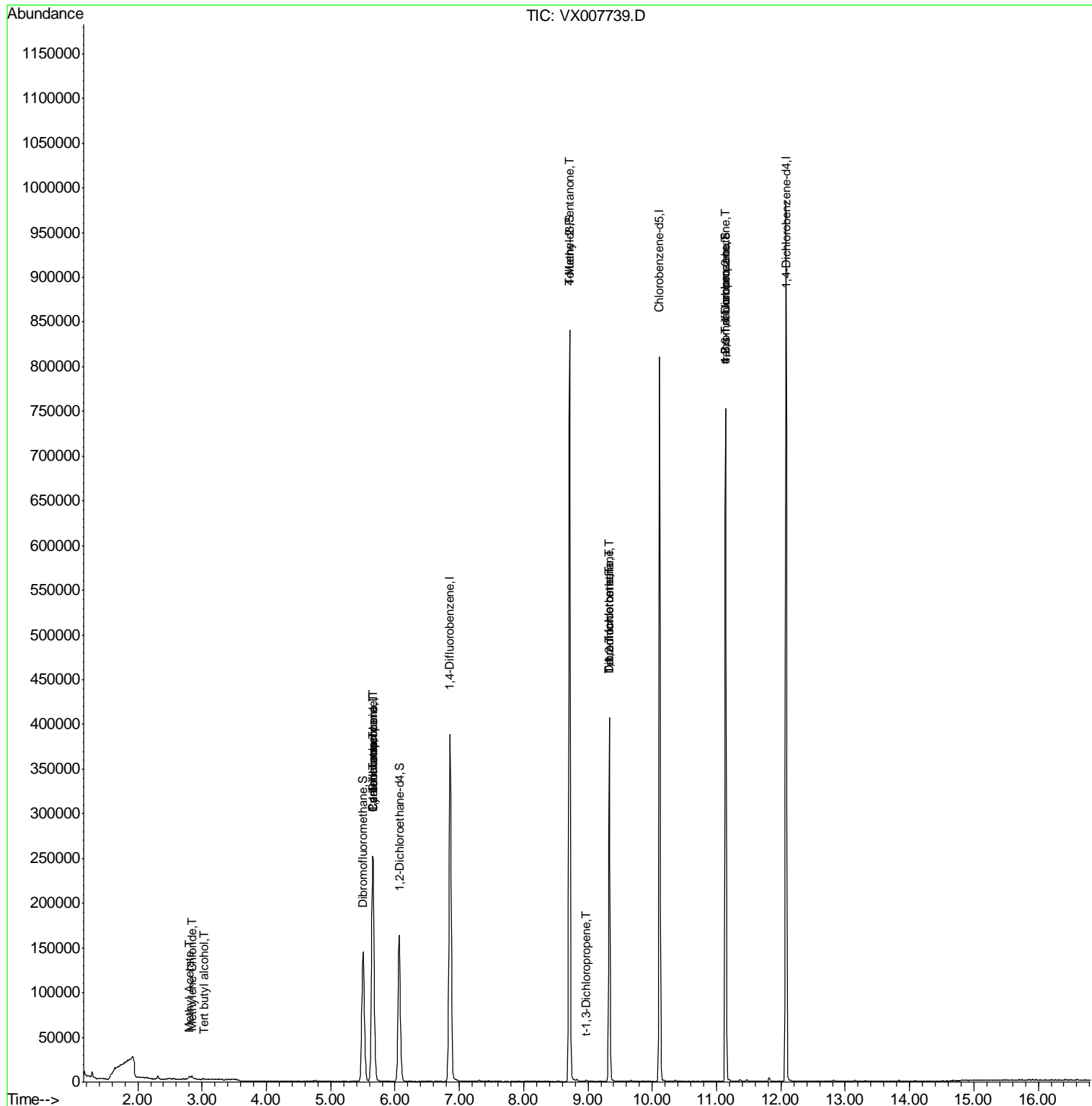
					Qvalue	
5) Bromomethane	1.64	94	803	Below Cal	#	76
11) Tert butyl alcohol	3.03	59	351	0.579	ug/l	98
18) Methyl Acetate	2.80	43	2350	0.758	ug/l #	89
20) Methylene Chloride	2.84	84	1627	0.620	ug/l #	87
31) Cyclohexane	5.65	56	4598	1.035	ug/l #	1
36) 1,1-Dichloropropene	5.66	75	16866	4.707	ug/l #	48
38) Carbon Tetrachloride	5.65	117	22423	6.230	ug/l #	17
51) 4-Methyl-2-Pentanone	8.71	43	2605	0.635	ug/l #	1
53) t-1,3-Dichloropropene	8.97	75	395	2.889	ug/l #	43
55) 1,1,2-Trichloroethane	9.32	97	647	0.222	ug/l #	13
60) Dibromochloromethane	9.33	129	75048	26.815	ug/l #	12
64) Tetrachloroethene	9.33	164	84849	26.823	ug/l	98
76) 1,2,3-Trichloropropane	11.14	75	91827	20.649	ug/l #	32
81) trans-1,4-Dichloro-2-buten	11.14	75	91827	55.012	ug/l #	9

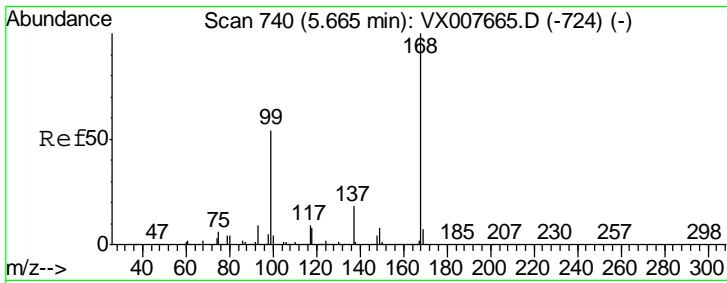
(#) = qualifier out of range (m) = manual integration (+) = signals summed

Data Path : Z:\VOASRV\HPCHEM1\MSVOA X\DATA\VX022719\  
 Data File : VX007739.D  
 Acq On : 27 Feb 2019 17:38  
 Operator : JC/SP  
 Sample : K1628-03ME  
 Misc : 6.49µ/5mL/100uL/5.00mL/MSVOA\_X/MEOH  
 ALS Vial : 11 Sample Multiplier: 1

Instrument :  
 MSVOA\_X  
 ClientSampled :

Quant Time: Feb 28 03:59:45 2019  
 Quant Method : Z:\VOASRV\HPCHEM1\MSVOA\_X\METHOD\82X022519W.M  
 Quant Title : SW846 8260  
 QLast Update : Tue Feb 26 01:53:13 2019  
 Response via : Initial Calibration

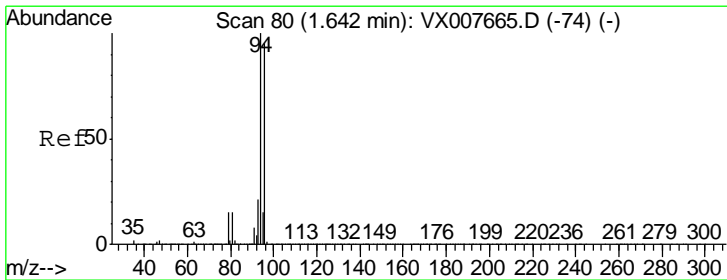
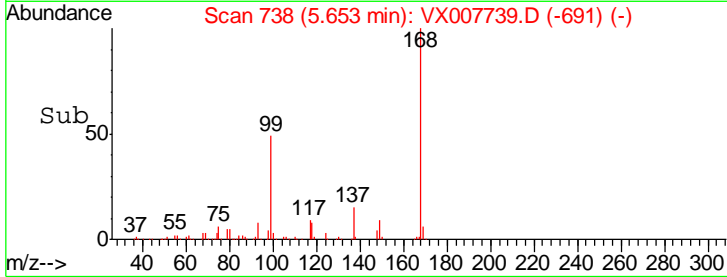
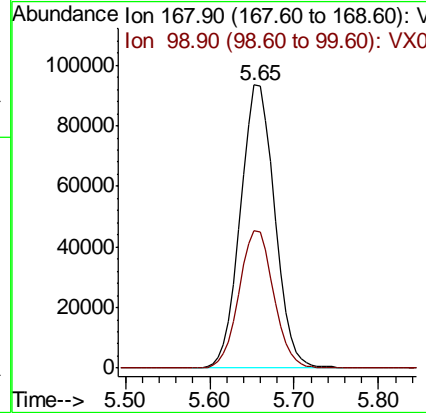
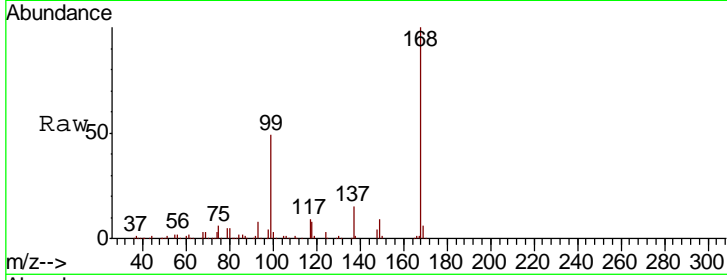




#1  
 Pentafluorobenzene  
 Concen: 50.000 ug/l  
 RT: 5.65 min Scan# 738  
 Delta R.T. -0.01 min  
 Lab File: VX007739.D  
 Acq: 27 Feb 2019 17:38

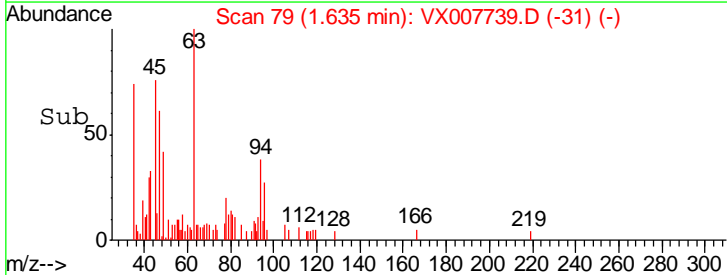
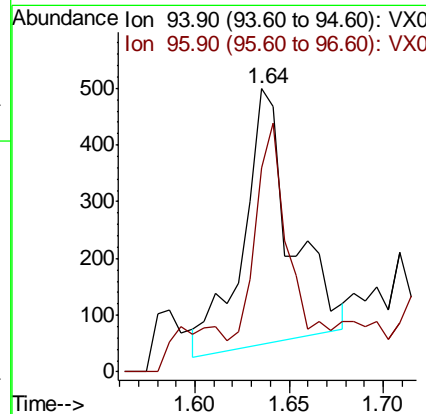
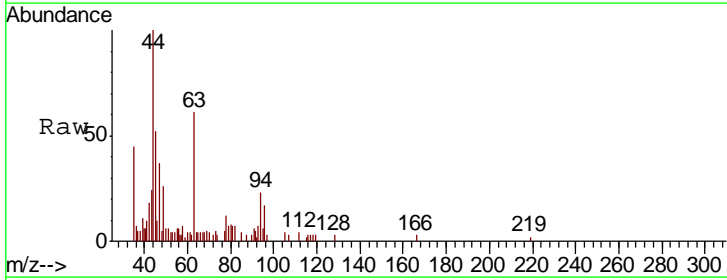
Instrument : MSVOA\_X  
 ClientSampled :

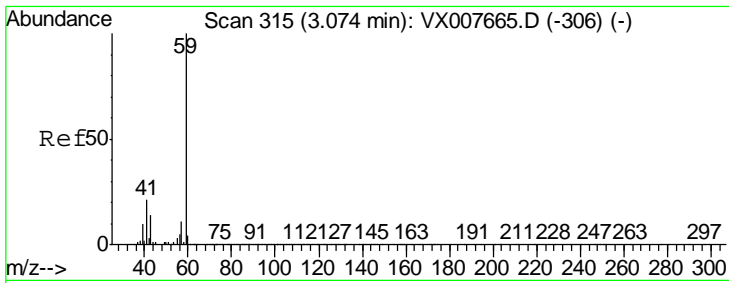
Tgt Ion	Resp	Lower	Upper
168	100		
99	48.7	37.9	56.9



#5  
 Bromomethane  
 Concen: Below Cal  
 RT: 1.64 min Scan# 79  
 Delta R.T. -0.01 min  
 Lab File: VX007739.D  
 Acq: 27 Feb 2019 17:38

Tgt Ion	Resp	Lower	Upper
94	100		
96	69.3	73.9	110.9#

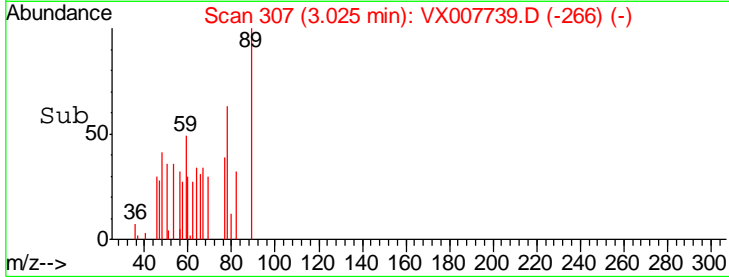
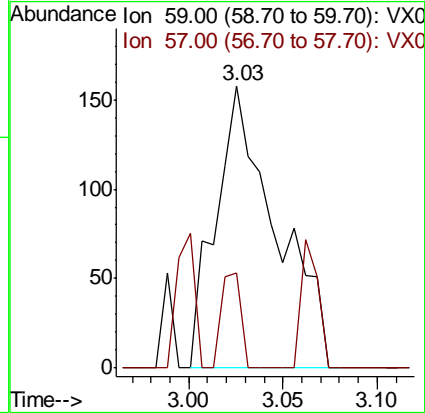
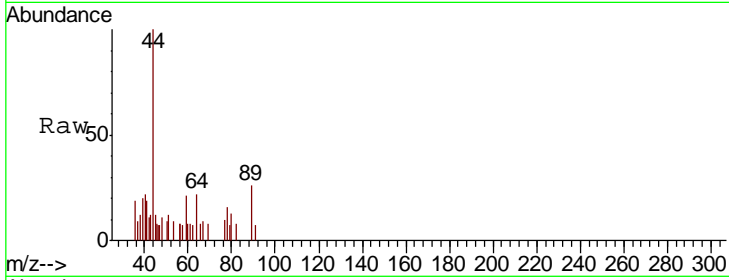




#11  
 Tert butyl alcohol  
 Concen: 0.579 ug/l  
 RT: 3.03 min Scan# 307  
 Delta R.T. -0.05 min  
 Lab File: VX007739.D  
 Acq: 27 Feb 2019 17:38

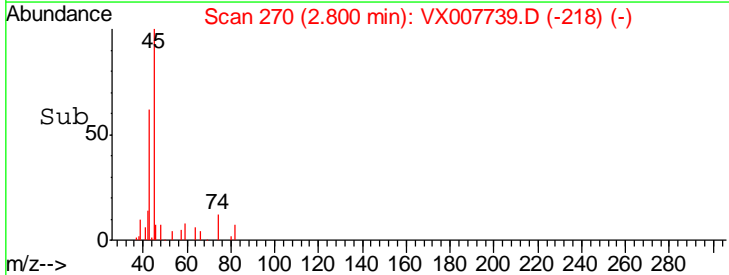
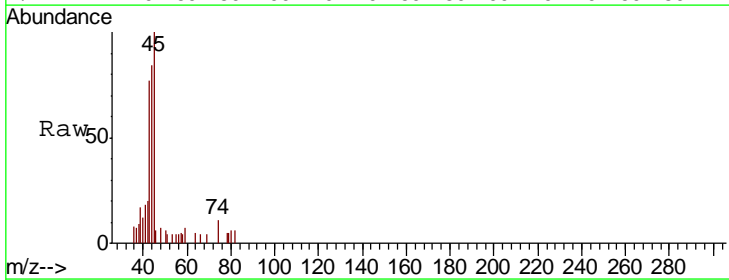
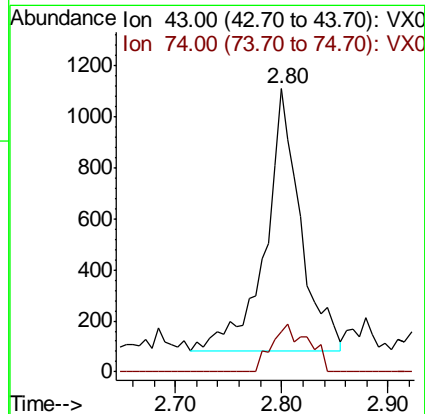
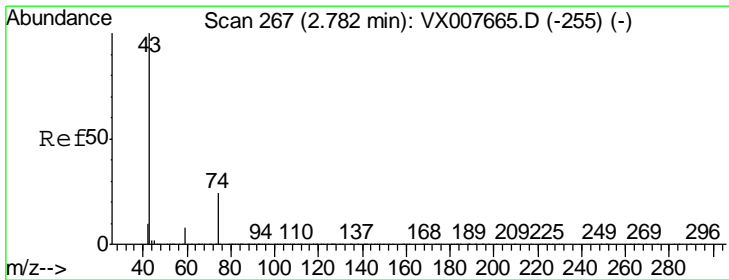
Instrument : MSVOA\_X  
 ClientSampled :

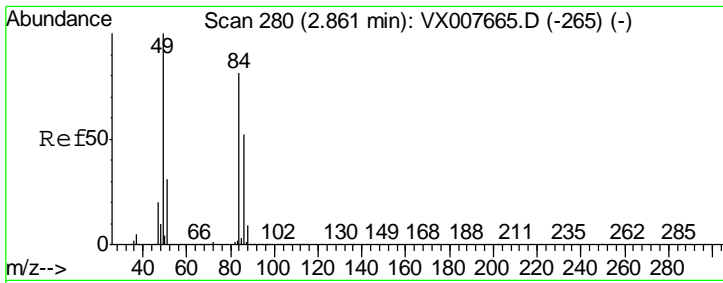
Tgt Ion	Resp	Lower	Upper
59	100		
57	10.8	8.1	12.1



#18  
 Methyl Acetate  
 Concen: 0.758 ug/l  
 RT: 2.80 min Scan# 270  
 Delta R.T. 0.02 min  
 Lab File: VX007739.D  
 Acq: 27 Feb 2019 17:38

Tgt Ion	Resp	Lower	Upper
43	100		
74	19.0	19.4	29.2#

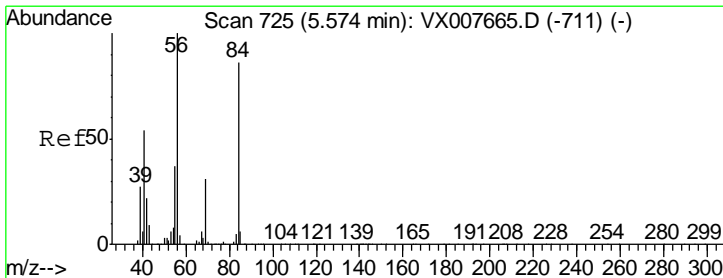
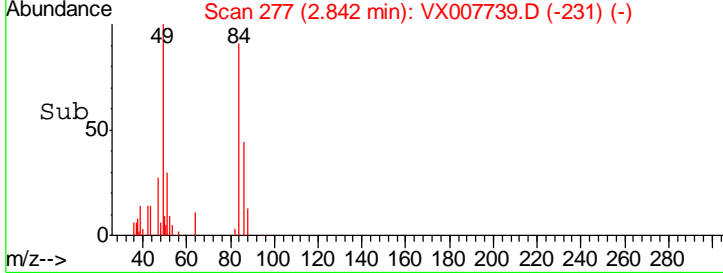
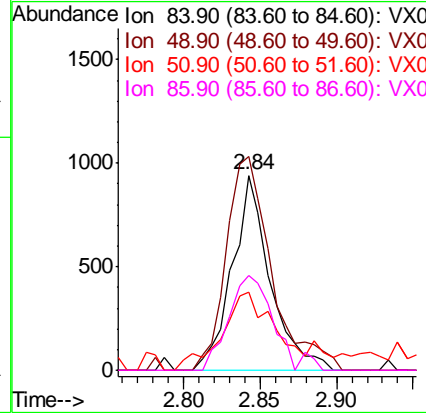
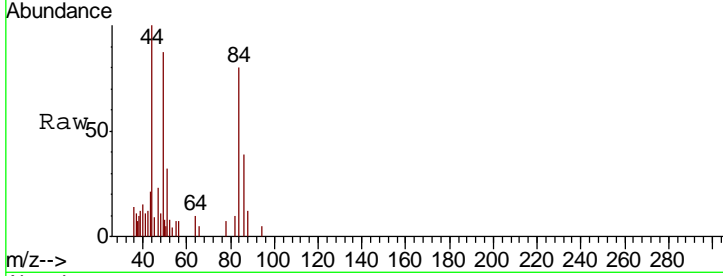




#20  
 Methylene Chloride  
 Concen: 0.620 ug/l  
 RT: 2.84 min Scan# 277  
 Delta R.T. -0.02 min  
 Lab File: VX007739.D  
 Acq: 27 Feb 2019 17:38

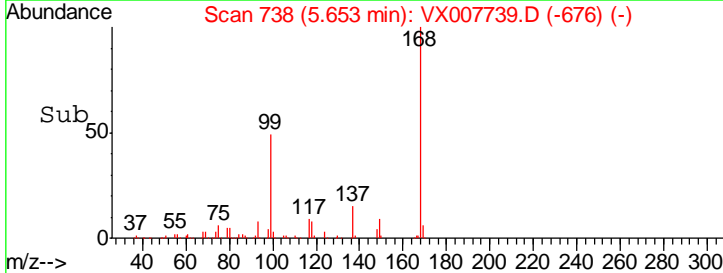
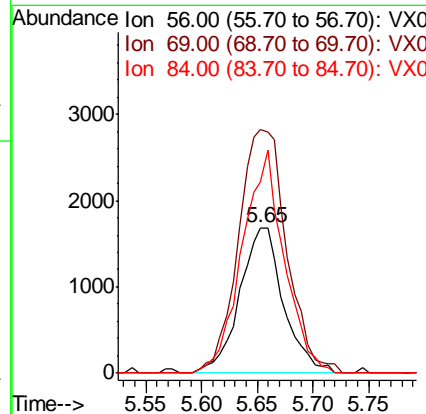
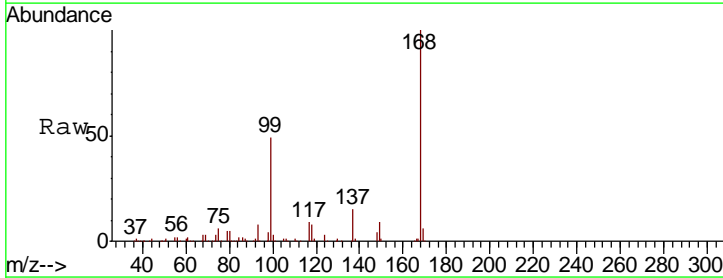
Instrument :  
 MSVOA\_X  
 ClientSampled :

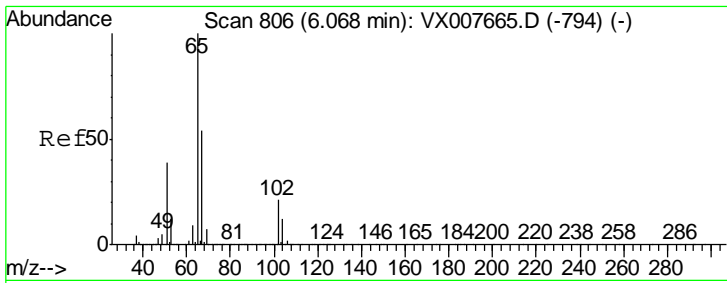
Tgt Ion	Resp	Lower	Upper
84	1627		
49	109.6	94.8	142.2
51	31.7	29.8	44.8
86	48.5	54.1	81.1#



#31  
 Cyclohexane  
 Concen: 1.035 ug/l  
 RT: 5.65 min Scan# 738  
 Delta R.T. 0.08 min  
 Lab File: VX007739.D  
 Acq: 27 Feb 2019 17:38

Tgt Ion	Resp	Lower	Upper
56	4598		
69	167.5	23.0	34.6#
84	131.2	69.8	104.6#

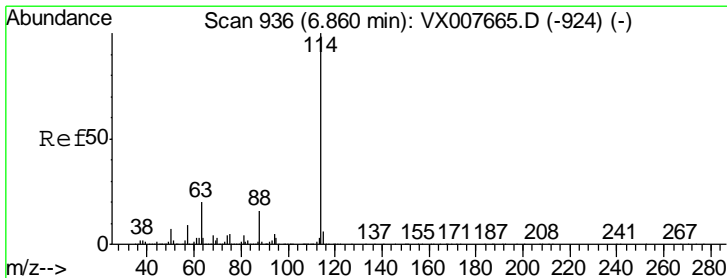
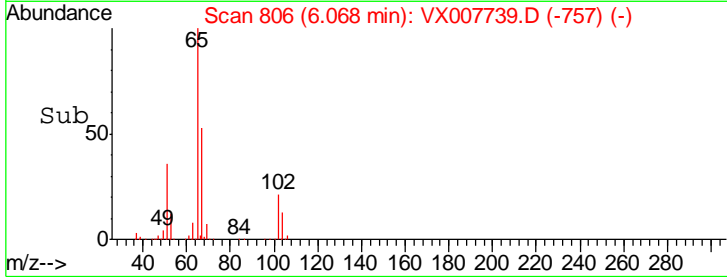
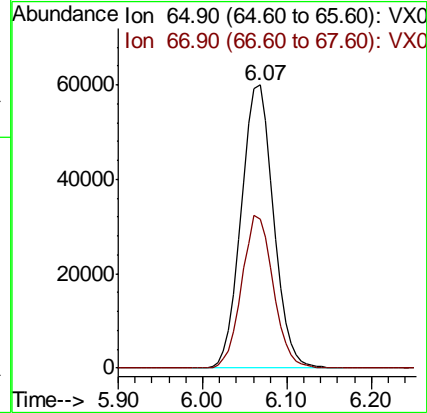
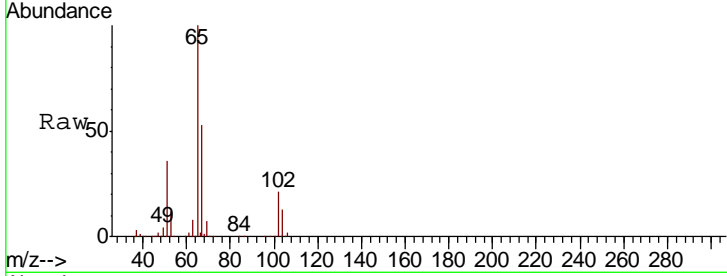




#33  
 1,2-Dichloroethane-d4  
 Concen: 48.639 ug/l  
 RT: 6.07 min Scan# 806  
 Delta R.T. -0.00 min  
 Lab File: VX007739.D  
 Acq: 27 Feb 2019 17:38

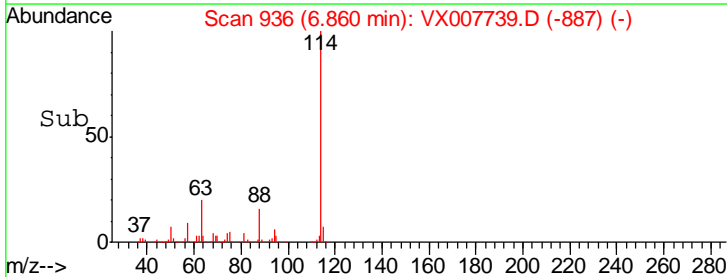
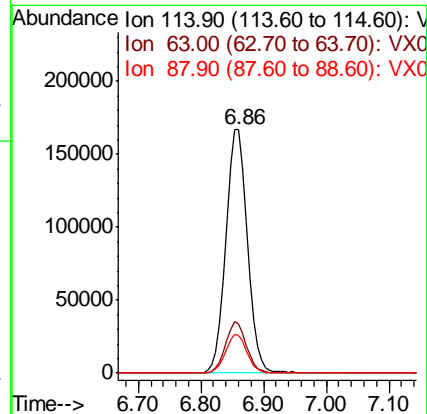
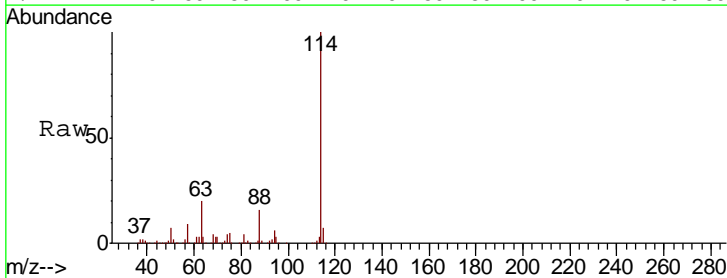
Instrument :  
 MSVOA\_X  
 ClientSampled :

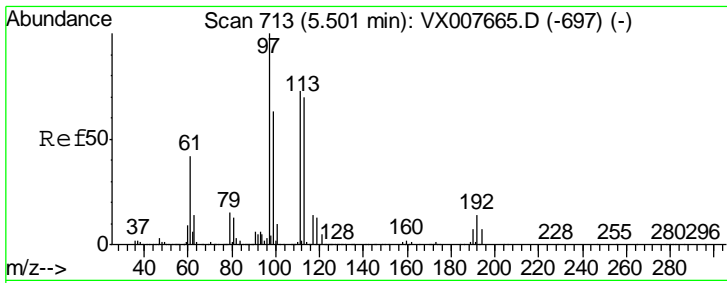
Tgt Ion	Resp	Lower	Upper
65	155477		
67	52.4	0.0	108.8



#34  
 1,4-Difluorobenzene  
 Concen: 50.000 ug/l  
 RT: 6.86 min Scan# 936  
 Delta R.T. -0.00 min  
 Lab File: VX007739.D  
 Acq: 27 Feb 2019 17:38

Tgt Ion	Resp	Lower	Upper
114	398551		
63	20.1	0.0	35.6
88	15.6	0.0	29.6

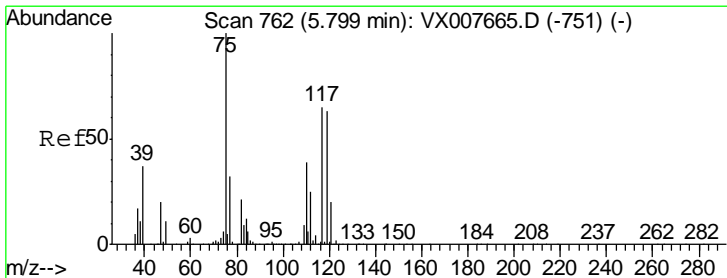
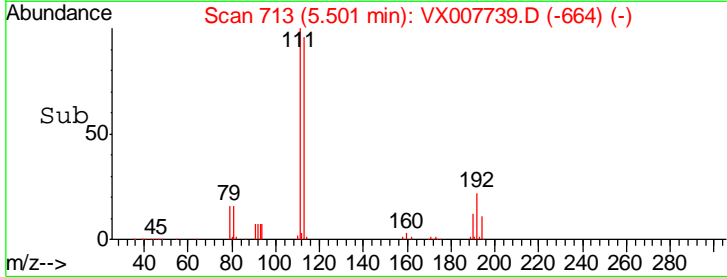
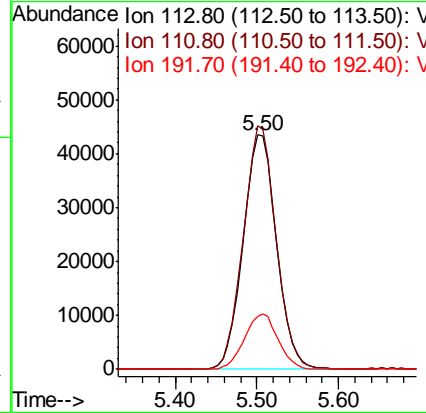
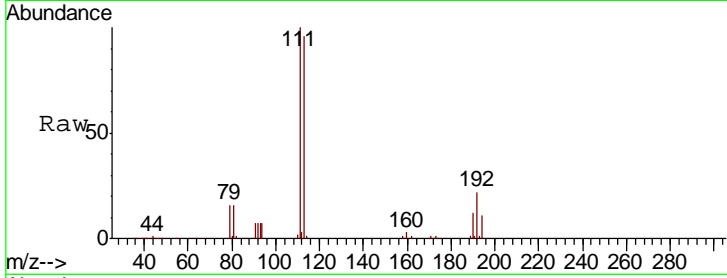




#35  
 Dibromofluoromethane  
 Concen: 46.437 ug/l  
 RT: 5.50 min Scan# 713  
 Delta R.T. -0.00 min  
 Lab File: VX007739.D  
 Acq: 27 Feb 2019 17:38

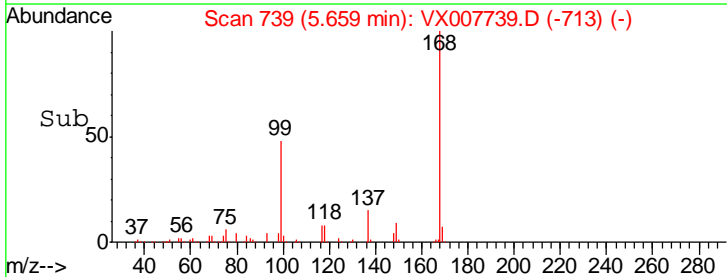
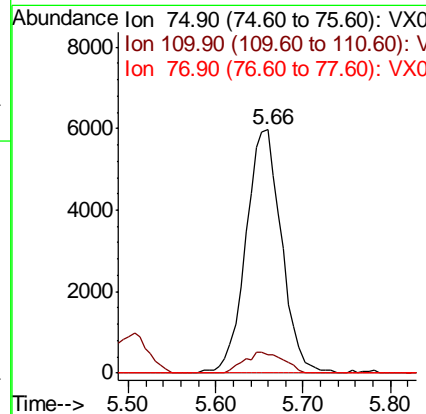
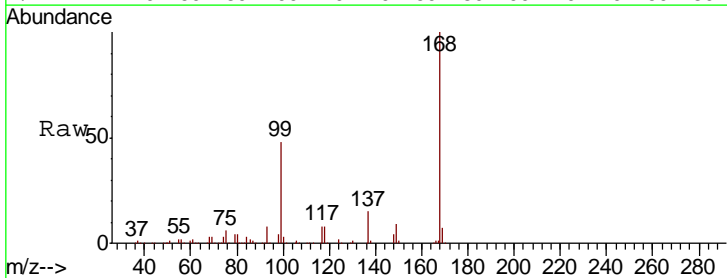
Instrument :  
 MSVOA\_X  
 ClientSampled :

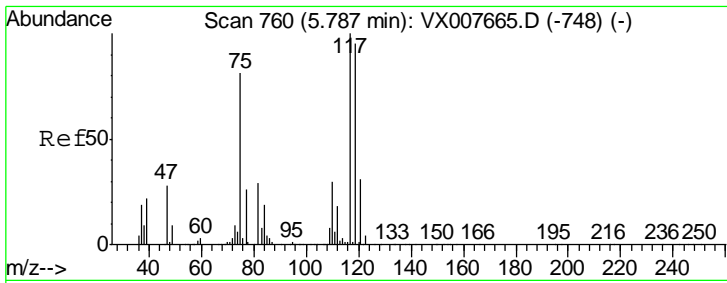
Tgt Ion	Resp	Lower	Upper
113	123718		
113	100		
111	101.9	81.8	122.8
192	23.7	18.5	27.7



#36  
 1,1-Dichloropropene  
 Concen: 4.707 ug/l  
 RT: 5.66 min Scan# 739  
 Delta R.T. -0.14 min  
 Lab File: VX007739.D  
 Acq: 27 Feb 2019 17:38

Tgt Ion	Resp	Lower	Upper
75	16866		
75	100		
110	9.6	20.0	59.9#
77	0.0	24.7	37.1#

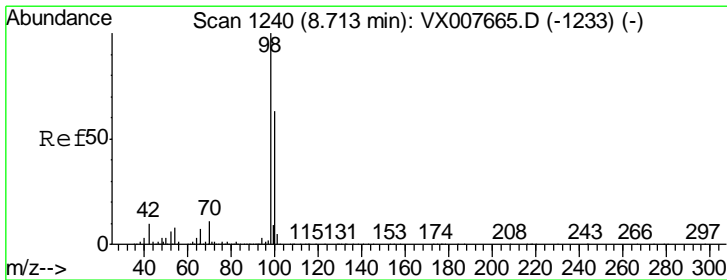
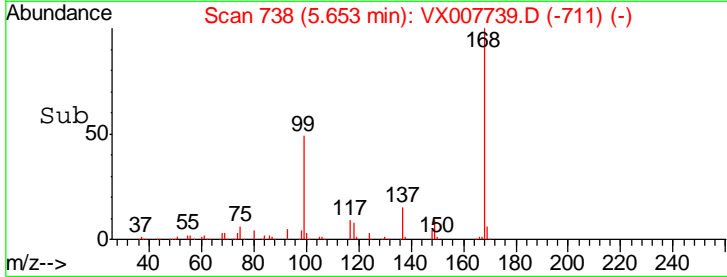
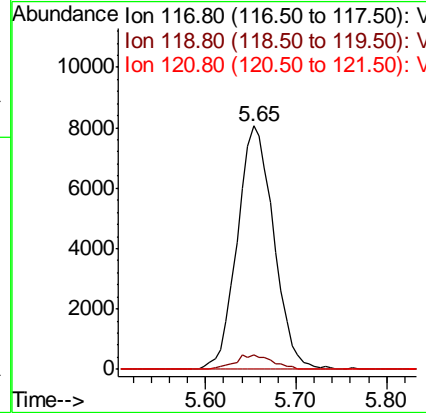
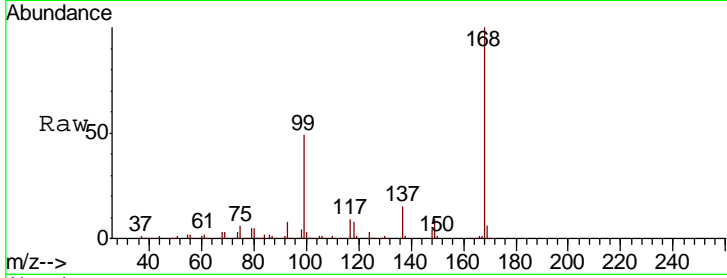




#38  
 Carbon Tetrachloride  
 Concen: 6.230 ug/l  
 RT: 5.65 min Scan# 738  
 Delta R.T. -0.13 min  
 Lab File: VX007739.D  
 Acq: 27 Feb 2019 17:38

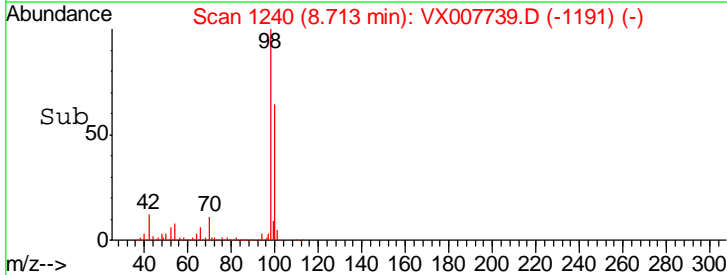
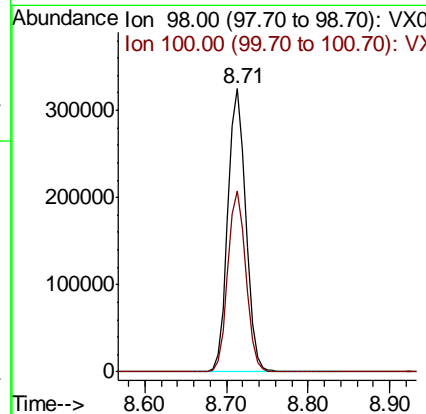
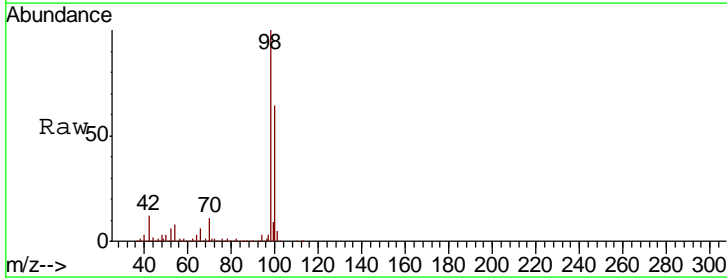
Instrument :  
 MSVOA\_X  
 ClientSampled :

Tgt Ion	Resp	Lower	Upper
117	100		
119	6.0	75.3	112.9#
121	0.0	25.0	37.4#

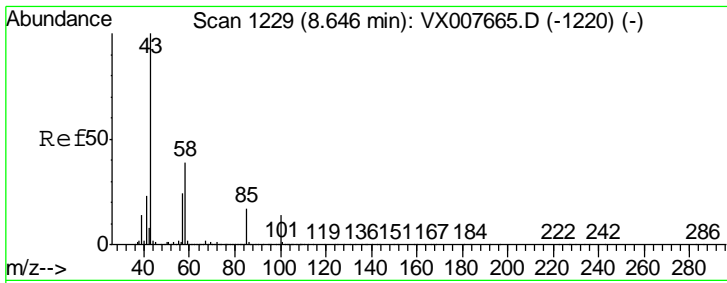


#50  
 Toluene-d8  
 Concen: 48.640 ug/l  
 RT: 8.71 min Scan# 1240  
 Delta R.T. -0.00 min  
 Lab File: VX007739.D  
 Acq: 27 Feb 2019 17:38

Tgt Ion	Resp	Lower	Upper
98	100		
100	64.2	51.6	77.4



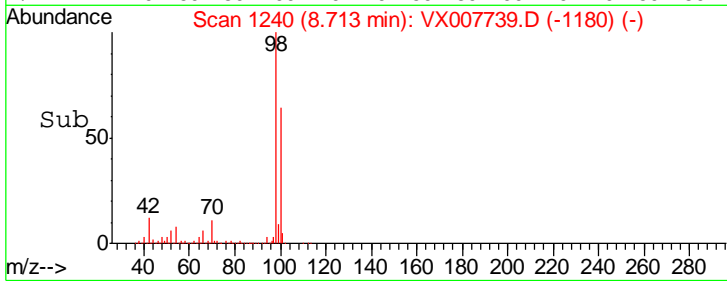
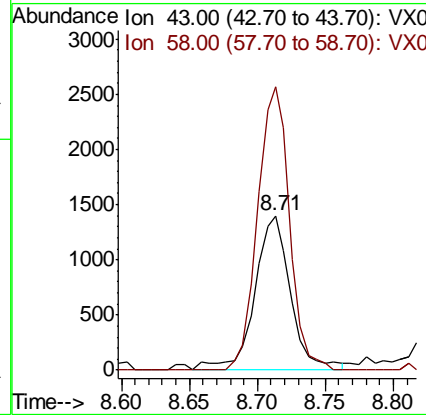
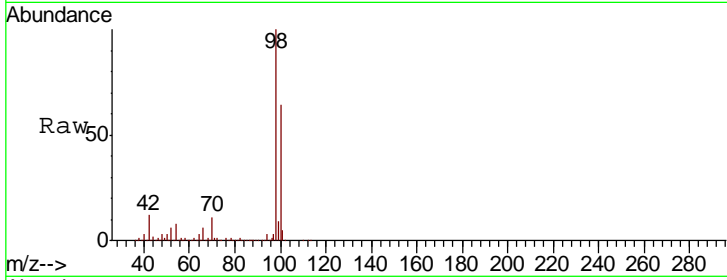




#51  
 4-Methyl-2-Pentanone  
 Concen: 0.635 ug/l  
 RT: 8.71 min Scan# 1240  
 Delta R.T. 0.07 min  
 Lab File: VX007739.D  
 Acq: 27 Feb 2019 17:38

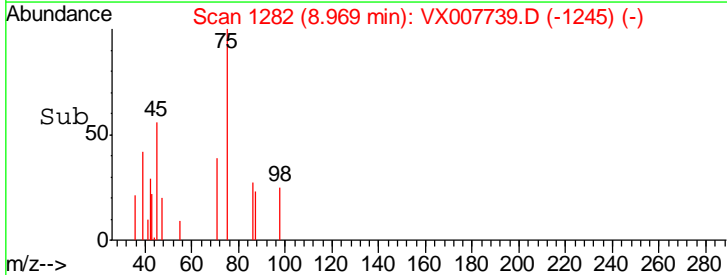
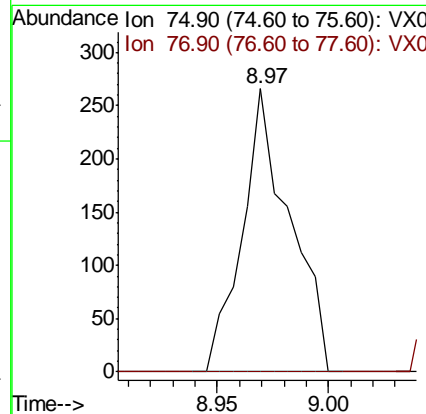
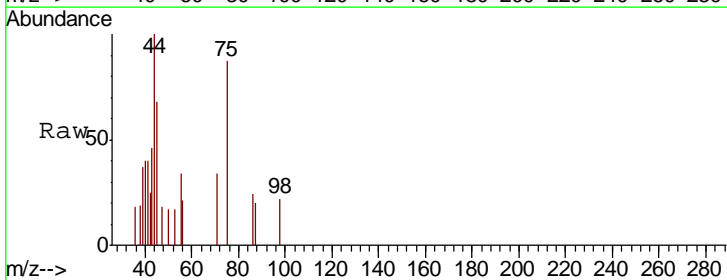
Instrument :  
 MSVOA\_X  
 ClientSampled :

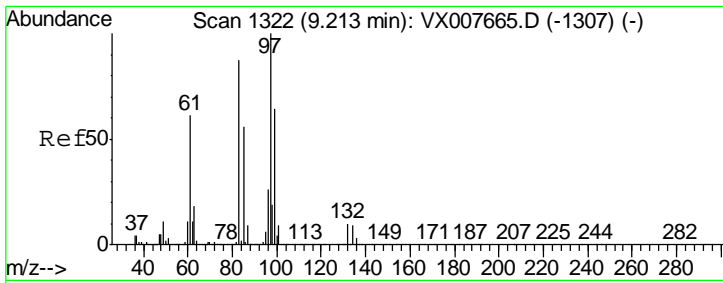
Tgt Ion	Resp	Lower	Upper
43	100		
58	161.9	31.2	46.8#



#53  
 t-1,3-Dichloropropene  
 Concen: 2.889 ug/l  
 RT: 8.97 min Scan# 1282  
 Delta R.T. -0.07 min  
 Lab File: VX007739.D  
 Acq: 27 Feb 2019 17:38

Tgt Ion	Resp	Lower	Upper
75	100		
77	0.0	25.2	37.8#

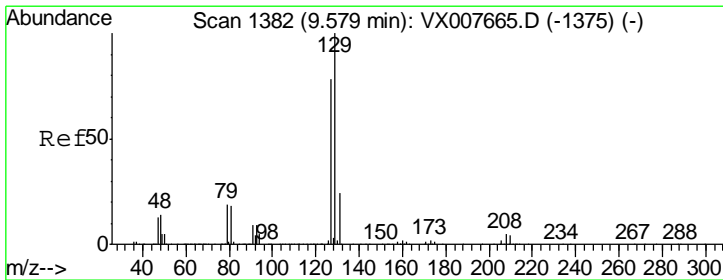
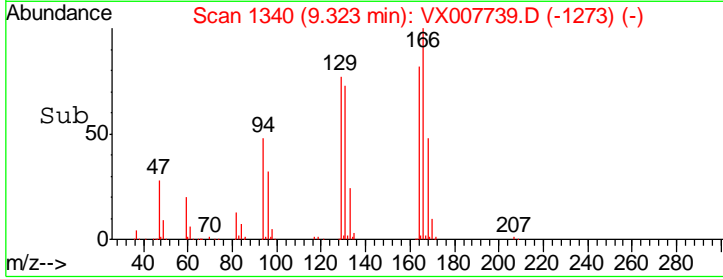
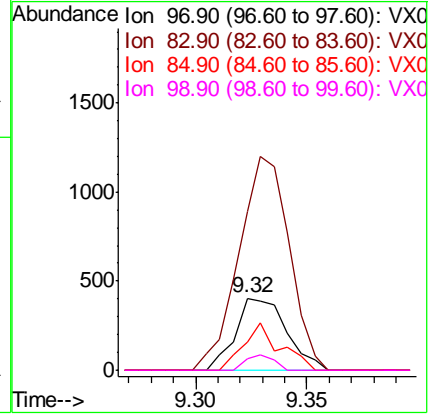
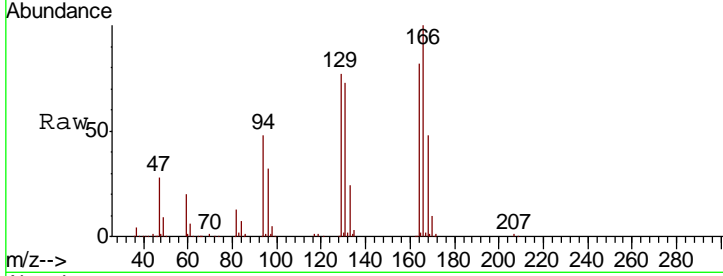




#55  
 1,1,2-Trichloroethane  
 Concen: 0.222 ug/l  
 RT: 9.32 min Scan# 1340  
 Delta R.T. 0.11 min  
 Lab File: VX007739.D  
 Acq: 27 Feb 2019 17:38

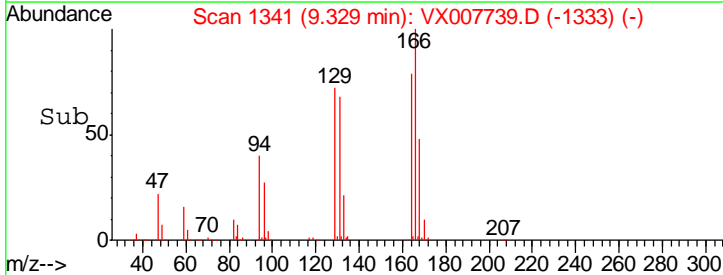
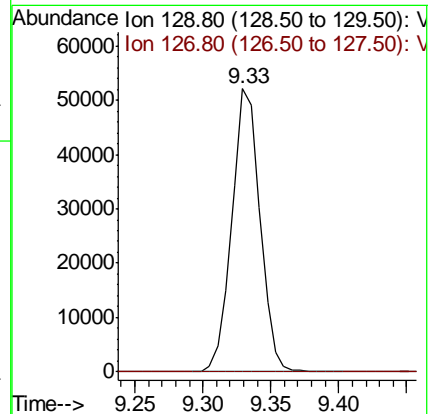
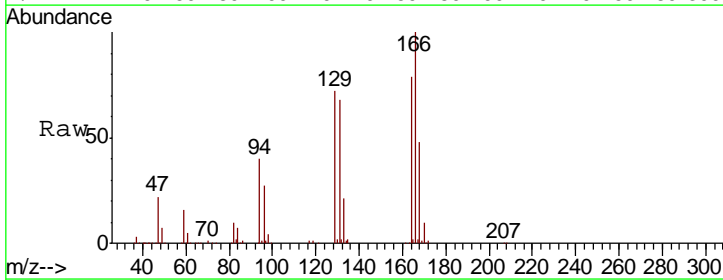
Instrument : MSVOA\_X  
 ClientSampled :

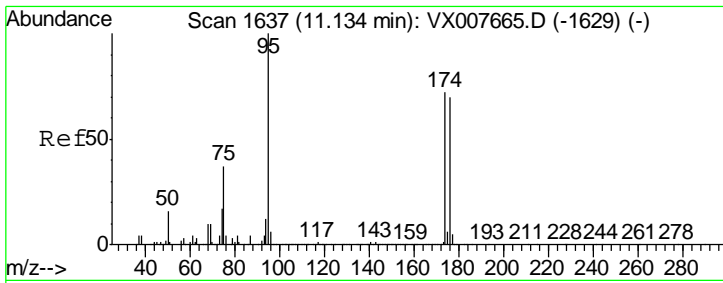
Tgt Ion	Resp	Lower	Upper
97	100		
83	220.0	68.6	102.8#
85	39.7	44.5	66.7#
99	15.5	52.2	78.4#



#60  
 Dibromochloromethane  
 Concen: 26.815 ug/l  
 RT: 9.33 min Scan# 1341  
 Delta R.T. -0.25 min  
 Lab File: VX007739.D  
 Acq: 27 Feb 2019 17:38

Tgt Ion	Resp	Lower	Upper
129	100		
127	0.0	37.8	113.4#

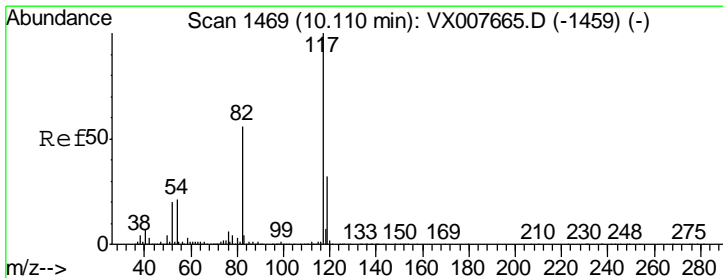
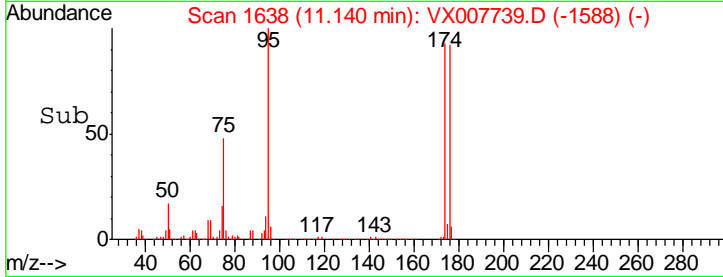
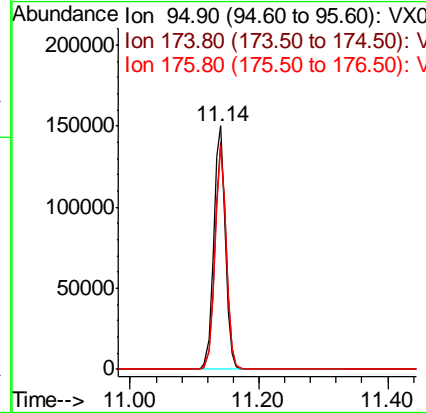
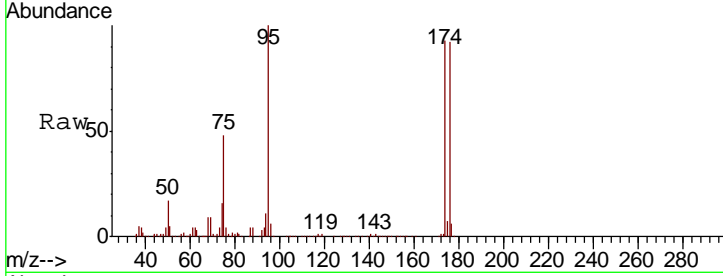




#62  
 4-Bromofluorobenzene  
 Concen: 50.516 ug/l  
 RT: 11.14 min Scan# 1638  
 Delta R.T. 0.01 min  
 Lab File: VX007739.D  
 Acq: 27 Feb 2019 17:38

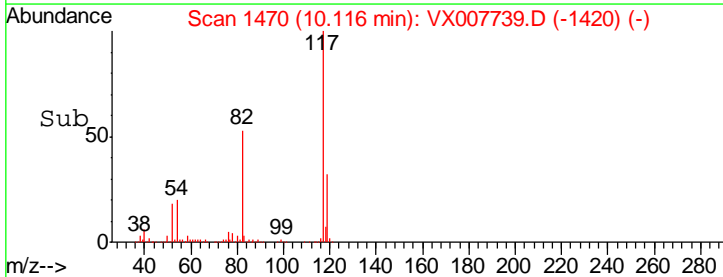
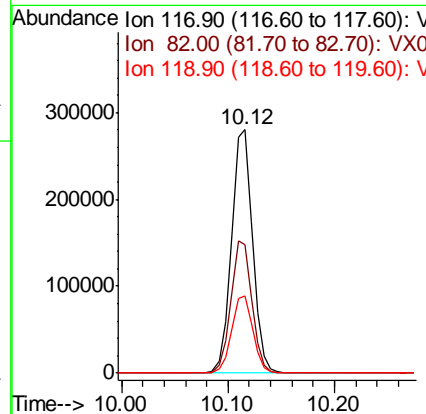
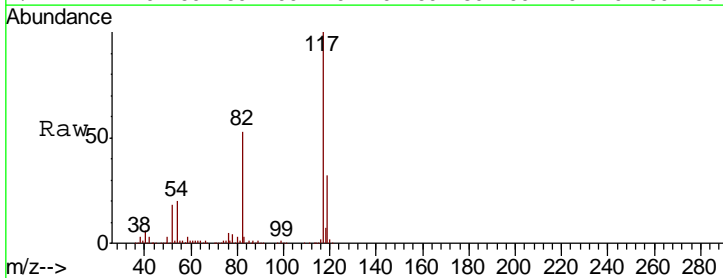
Instrument : MSVOA\_X  
 ClientSampled :

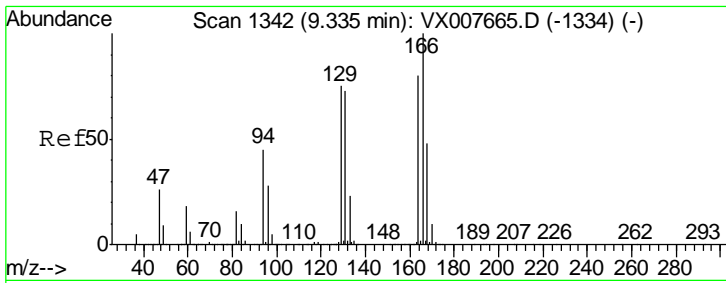
Tgt Ion	Resp	Lower	Upper
95	189111		
174	91.4	0.0	189.2
176	89.2	0.0	186.2



#63  
 Chlorobenzene-d5  
 Concen: 50.000 ug/l  
 RT: 10.12 min Scan# 1470  
 Delta R.T. 0.01 min  
 Lab File: VX007739.D  
 Acq: 27 Feb 2019 17:38

Tgt Ion	Resp	Lower	Upper
117	389661		
82	52.6	42.1	63.1
119	31.9	26.5	39.7

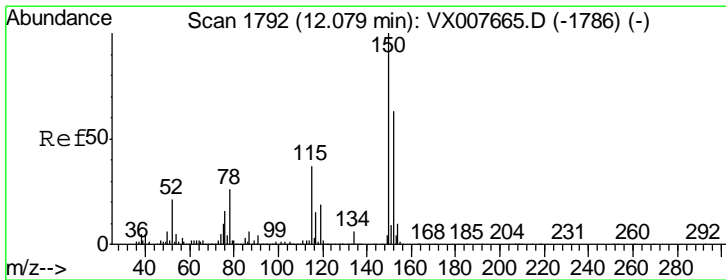
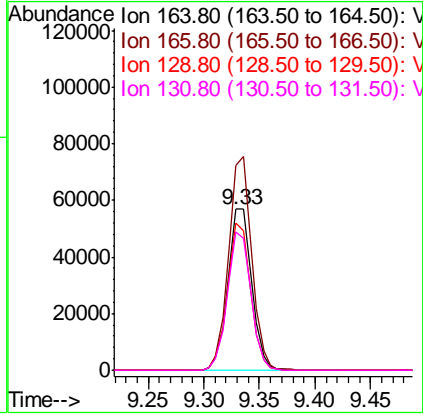
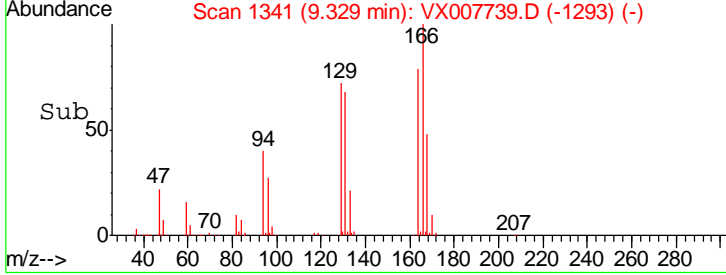
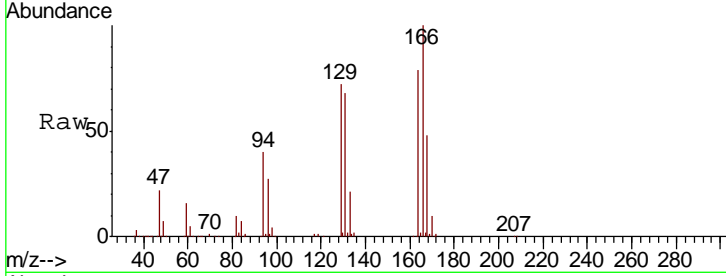




#64  
 Tetrachloroethene  
 Concen: 26.823 ug/l  
 RT: 9.33 min Scan# 1341  
 Delta R.T. -0.01 min  
 Lab File: VX007739.D  
 Acq: 27 Feb 2019 17:38

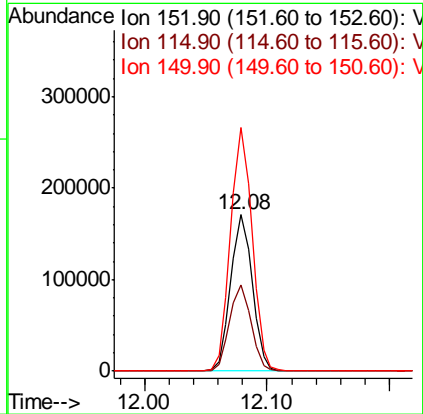
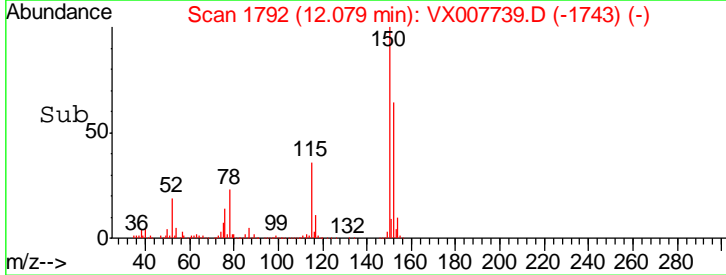
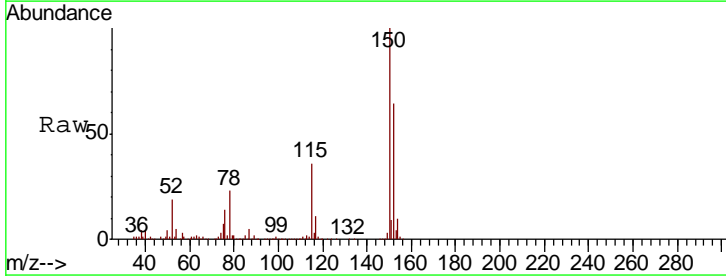
Instrument :  
 MSVOA\_X  
 ClientSampled :

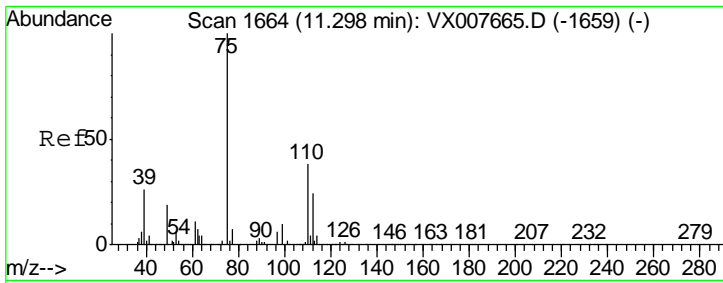
Tgt Ion	Resp	Lower	Upper
164	100		
166	126.8	101.0	151.4
129	91.5	70.5	105.7
131	85.9	69.8	104.6



#72  
 1,4-Dichlorobenzene-d4  
 Concen: 50.000 ug/l  
 RT: 12.08 min Scan# 1792  
 Delta R.T. -0.00 min  
 Lab File: VX007739.D  
 Acq: 27 Feb 2019 17:38

Tgt Ion	Resp	Lower	Upper
152	100		
115	55.2	38.0	114.0
150	155.4	0.0	346.4

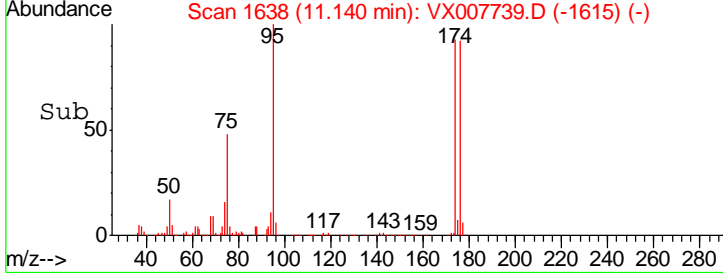
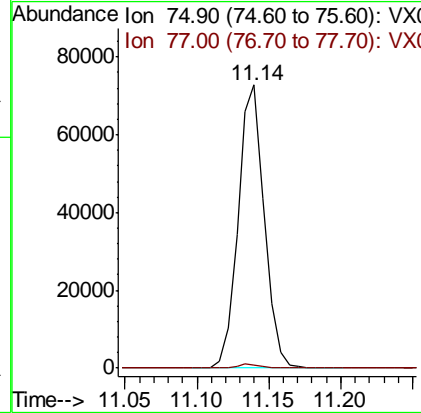
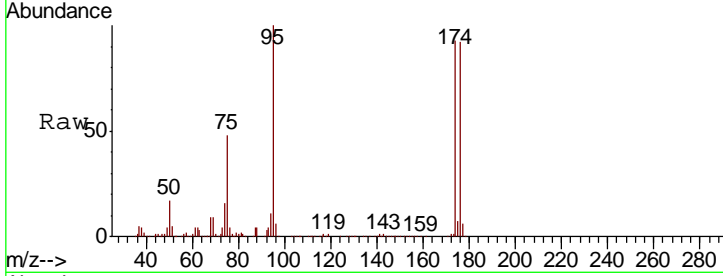




#76  
 1,2,3-Trichloropropane  
 Concen: 20.649 ug/l  
 RT: 11.14 min Scan# 1638  
 Delta R.T. -0.16 min  
 Lab File: VX007739.D  
 Acq: 27 Feb 2019 17:38

Instrument : MSVOA\_X  
 Client Sampled :

Tgt Ion: 75 Resp: 91827  
 Ion Ratio Lower Upper  
 75 100  
 77 1.2 23.0 69.0#



#81  
 trans-1,4-Dichloro-2-butene  
 Concen: 55.012 ug/l  
 RT: 11.14 min Scan# 1638  
 Delta R.T. 0.07 min  
 Lab File: VX007739.D  
 Acq: 27 Feb 2019 17:38

Tgt Ion: 75 Resp: 91827  
 Ion Ratio Lower Upper  
 75 100  
 53 0.2 81.0 121.6#  
 89 0.0 41.4 62.0#

