

Data Path : Z:\voasrv\HPCHEM1\MSVOA_X\Data\VX022822\
 Data File : VX027220.D
 Acq On : 28 Feb 2022 15:15
 Operator : JC/MD
 Sample : N1671-07
 Misc : 5.0mL/MSVOA_X/WATER
 ALS Vial : 6 Sample Multiplier: 1

Instrument :
 MSVOA_X
 ClientSampleId :

Quant Time: Mar 01 00:43:29 2022
 Quant Method : Z:\voasrv\HPCHEM1\MSVOA_X\Method\82X022322W.M
 Quant Title : SW846 8260
 QLast Update : Wed Feb 23 13:06:57 2022
 Response via : Initial Calibration

Compound	R.T.	QIon	Response	Conc	Units	Dev(Min)

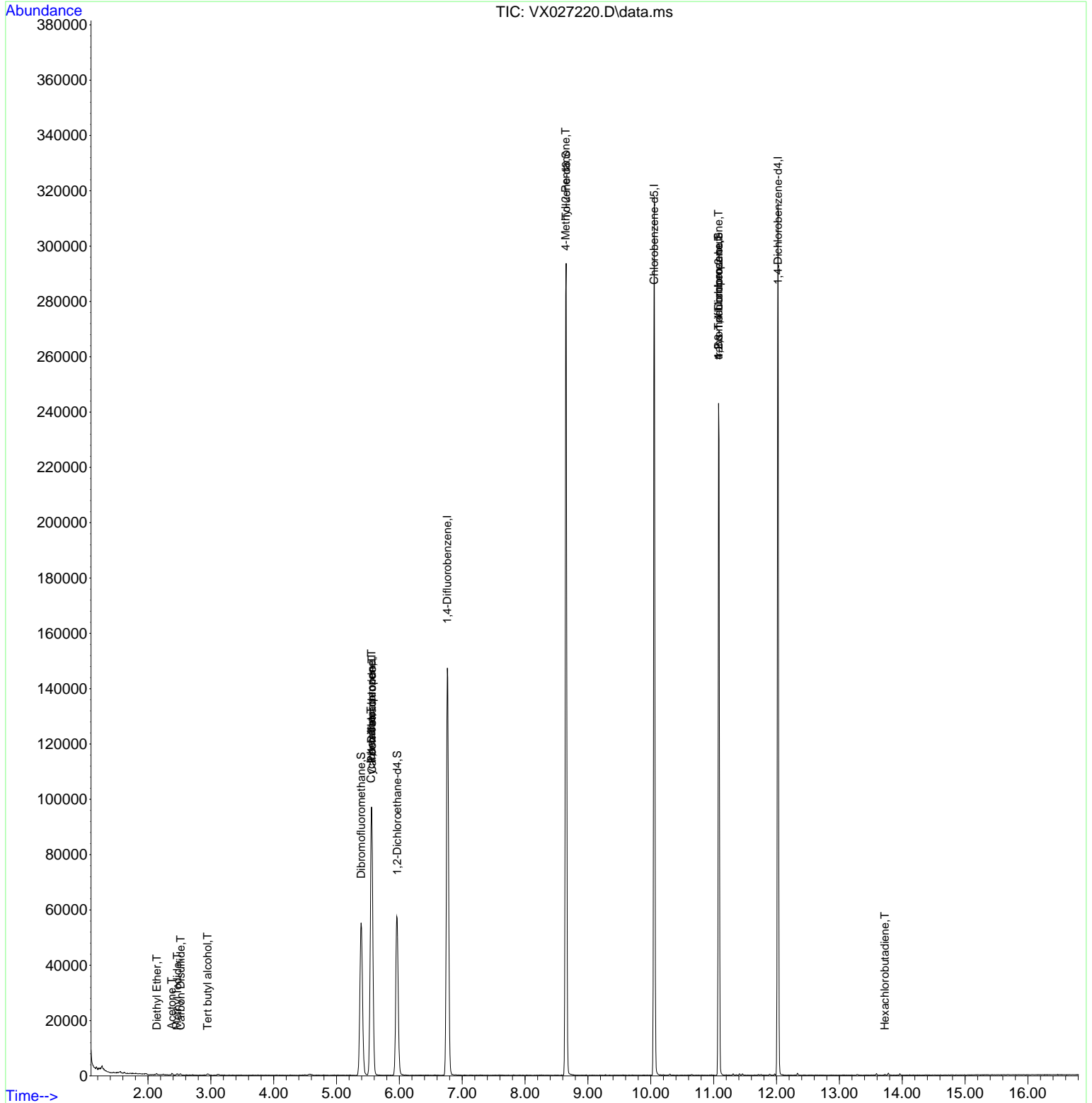
Internal Standards						
1) Pentafluorobenzene	5.556	168	92928	50.000	ug/l	0.00
34) 1,4-Difluorobenzene	6.763	114	155172	50.000	ug/l	0.00
63) Chlorobenzene-d5	10.055	117	140758	50.000	ug/l	0.00
72) 1,4-Dichlorobenzene-d4	12.024	152	65652	50.000	ug/l	0.00
System Monitoring Compounds						
33) 1,2-Dichloroethane-d4	5.964	65	56704	50.807	ug/l	0.00
Spiked Amount	50.000	Range 78 - 117	Recovery	=	101.620%	
35) Dibromofluoromethane	5.391	113	49240	51.122	ug/l	0.00
Spiked Amount	50.000	Range 75 - 124	Recovery	=	102.240%	
50) Toluene-d8	8.653	98	177965	49.415	ug/l	0.00
Spiked Amount	50.000	Range 92 - 112	Recovery	=	98.820%	
62) 4-Bromofluorobenzene	11.079	95	67798	49.043	ug/l	0.00
Spiked Amount	50.000	Range 83 - 123	Recovery	=	98.080%	
Target Compounds						
					Qvalue	
5) Bromomethane	1.618	94	271	Below Cal	#	73
8) Diethyl Ether	2.142	74	116	0.249	ug/l	81
10) Methyl Iodide	2.465	142	468	0.374	ug/l #	88
11) Tert butyl alcohol	2.947	59	451	2.077	ug/l #	75
16) Acetone	2.380	43	527	1.075	ug/l	96
17) Carbon Disulfide	2.520	76	602	0.256	ug/l #	74
31) Cyclohexane	5.550	56	1694	1.013	ug/l #	1
36) 1,1-Dichloropropene	5.556	75	6789	4.830	ug/l #	49
38) Carbon Tetrachloride	5.562	117	9476	6.463	ug/l #	17
51) 4-Methyl-2-Pentanone	8.647	43	768	0.498	ug/l #	1
76) 1,2,3-Trichloropropane	11.079	75	33149	25.068	ug/l #	40
81) trans-1,4-Dichloro-2-b...	11.079	75	33149	70.982	ug/l #	4
94) Hexachlorobutadiene	13.725	225	113	0.200	ug/l #	30

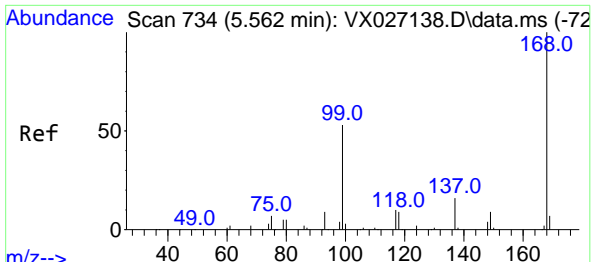
(#) = qualifier out of range (m) = manual integration (+) = signals summed

Data Path : Z:\voasrv\HPCHEM1\MSVOA_X\Data\VX022822\
 Data File : VX027220.D
 Acq On : 28 Feb 2022 15:15
 Operator : JC/MD
 Sample : N1671-07
 Misc : 5.0mL/MSVOA_X/WATER
 ALS Vial : 6 Sample Multiplier: 1

Instrument :
 MSVOA_X
 ClientSampleId :

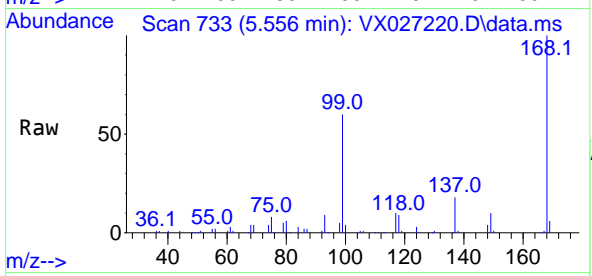
Quant Time: Mar 01 00:43:29 2022
 Quant Method : Z:\voasrv\HPCHEM1\MSVOA_X\Method\82X022322W.M
 Quant Title : SW846 8260
 QLast Update : Wed Feb 23 13:06:57 2022
 Response via : Initial Calibration



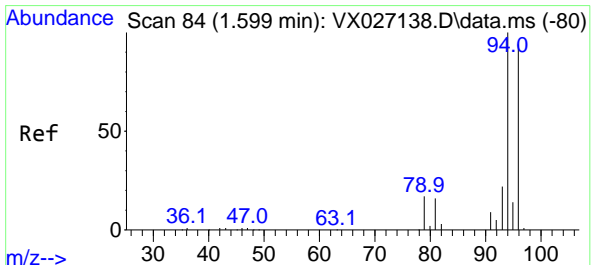
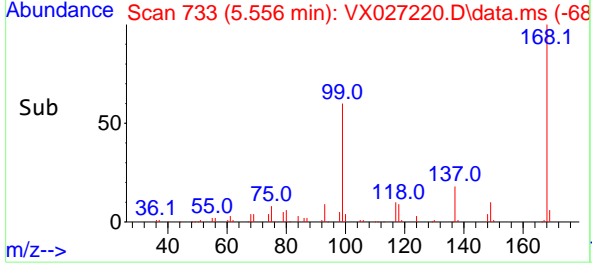
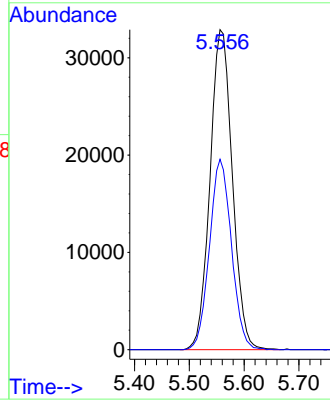


#1
 Pentafluorobenzene
 Concen: 50.000 ug/l
 RT: 5.556 min Scan# 71
 Delta R.T. -0.006 min
 Lab File: VX027220.D
 Acq: 28 Feb 2022 15:15

Instrument :
 MSVOA_X
 ClientSampleId :

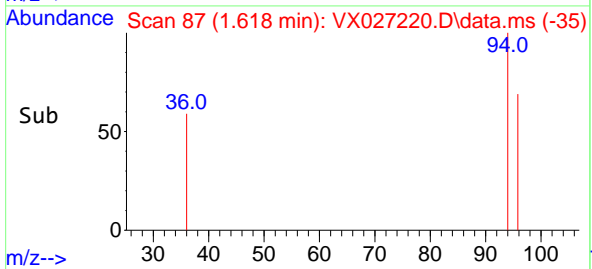
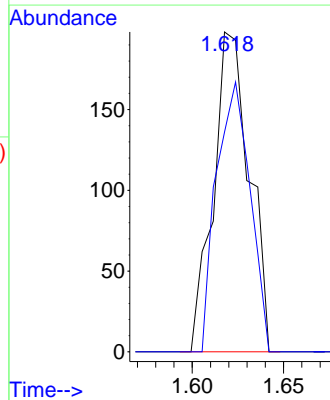
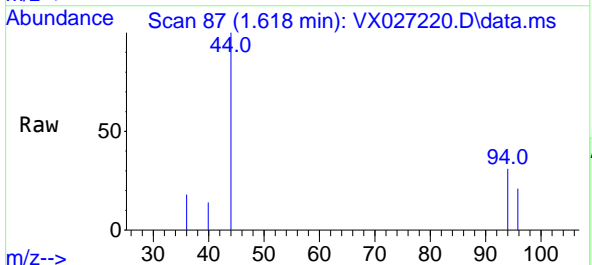


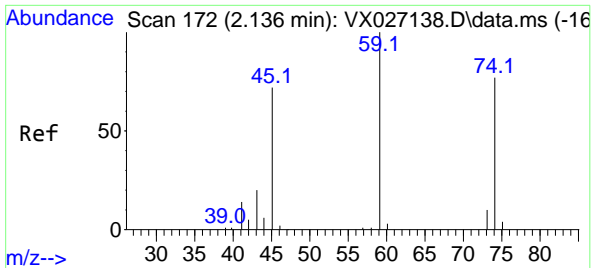
Tgt Ion:168 Resp: 92928
 Ion Ratio Lower Upper
 168 100
 99 59.5 50.3 75.5



#5
 Bromomethane
 Concen: Below Cal
 RT: 1.618 min Scan# 87
 Delta R.T. 0.019 min
 Lab File: VX027220.D
 Acq: 28 Feb 2022 15:15

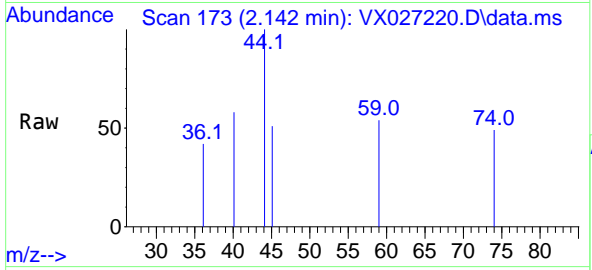
Tgt Ion: 94 Resp: 271
 Ion Ratio Lower Upper
 94 100
 96 68.7 75.9 113.9#



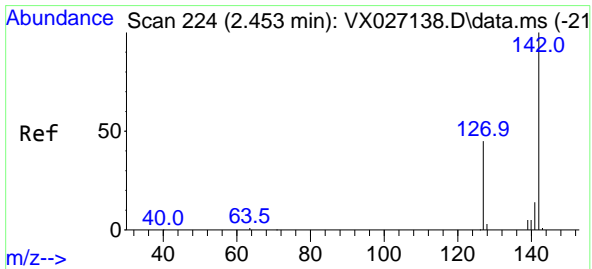
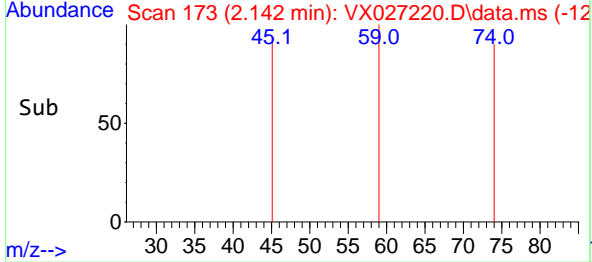
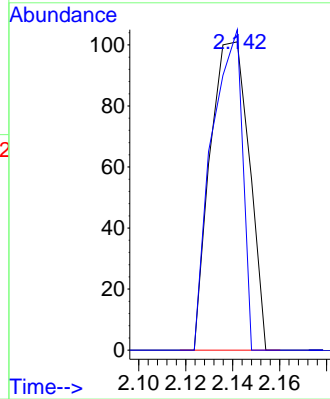


#8
 Diethyl Ether
 Concen: 0.249 ug/l
 RT: 2.142 min Scan# 11
 Delta R.T. 0.006 min
 Lab File: VX027220.D
 Acq: 28 Feb 2022 15:15

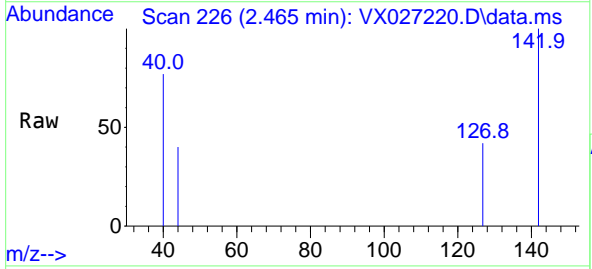
Instrument :
 MSVOA_X
 ClientSampleId :



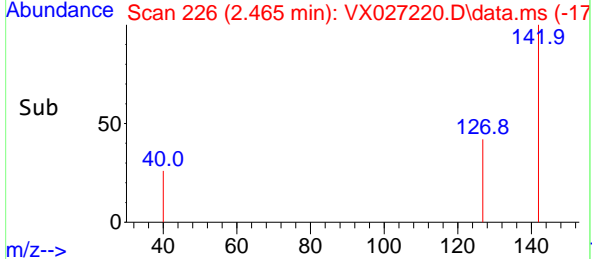
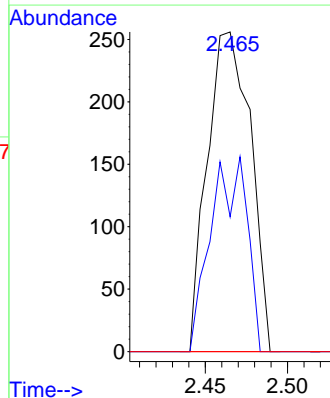
Tgt Ion: 74 Resp: 116
 Ion Ratio Lower Upper
 74 100
 45 81.9 50.7 152.1

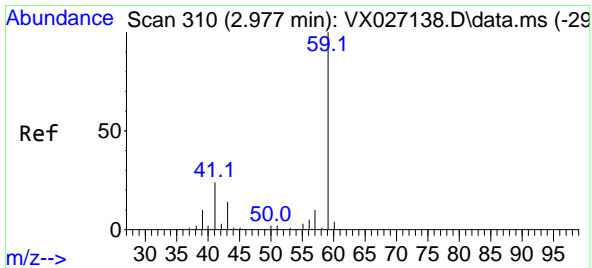


#10
 Methyl Iodide
 Concen: 0.374 ug/l
 RT: 2.465 min Scan# 226
 Delta R.T. 0.012 min
 Lab File: VX027220.D
 Acq: 28 Feb 2022 15:15



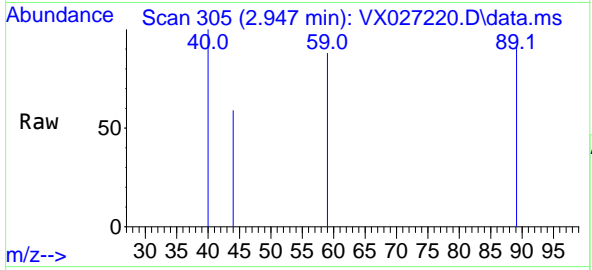
Tgt Ion: 142 Resp: 468
 Ion Ratio Lower Upper
 142 100
 127 51.1 38.1 57.1
 141 0.0 11.2 16.8#



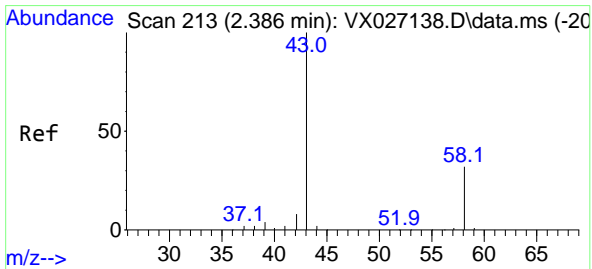
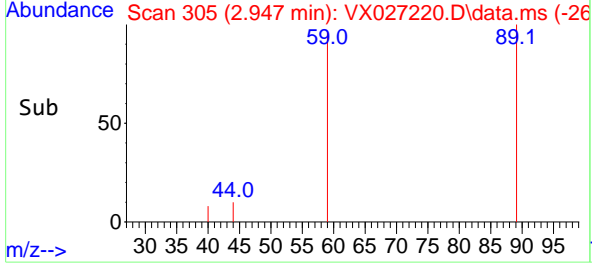
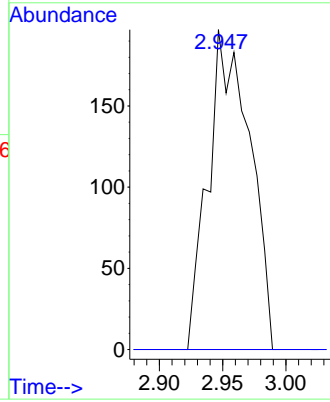


#11
 Tert butyl alcohol
 Concen: 2.077 ug/l
 RT: 2.947 min Scan# 30
 Delta R.T. -0.030 min
 Lab File: VX027220.D
 Acq: 28 Feb 2022 15:15

Instrument :
 MSVOA_X
 ClientSampleId :

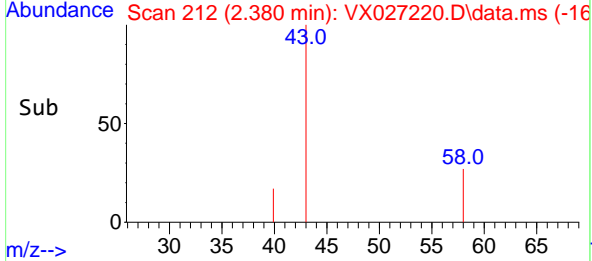
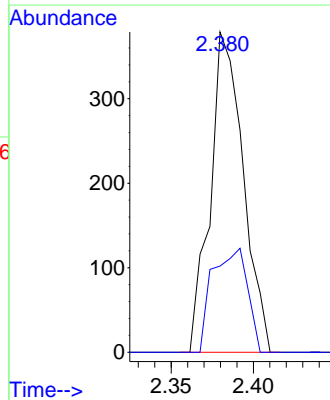
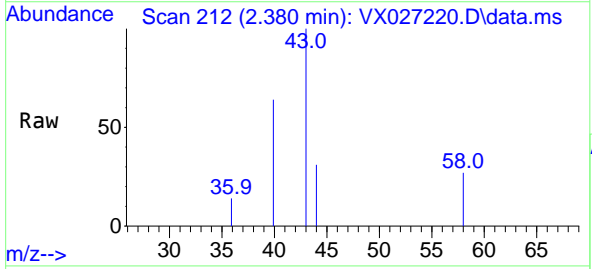


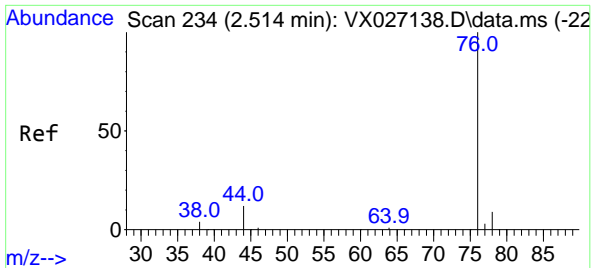
Tgt Ion: 59 Resp: 451
 Ion Ratio Lower Upper
 59 100
 57 0.0 7.2 10.8#



#16
 Acetone
 Concen: 1.075 ug/l
 RT: 2.380 min Scan# 212
 Delta R.T. -0.006 min
 Lab File: VX027220.D
 Acq: 28 Feb 2022 15:15

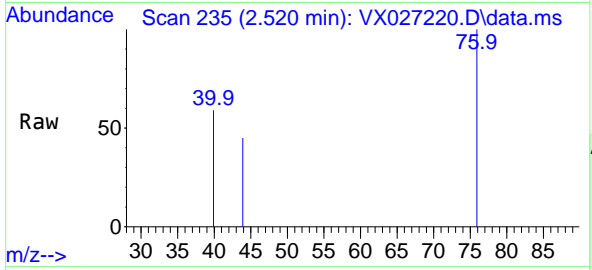
Tgt Ion: 43 Resp: 527
 Ion Ratio Lower Upper
 43 100
 58 26.9 23.0 34.6



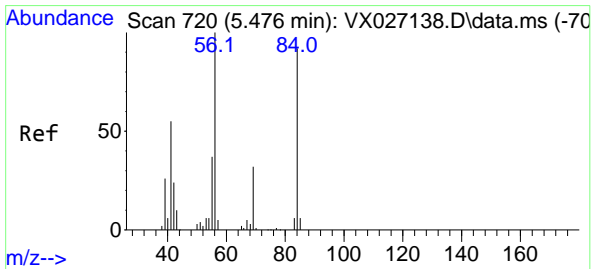
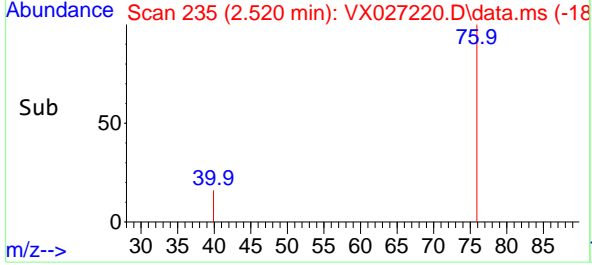
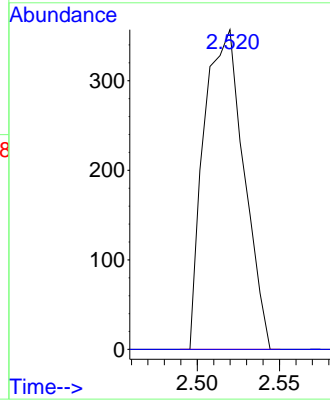


#17
 Carbon Disulfide
 Concen: 0.256 ug/l
 RT: 2.520 min Scan# 21
 Delta R.T. 0.006 min
 Lab File: VX027220.D
 Acq: 28 Feb 2022 15:15

Instrument :
 MSVOA_X
 ClientSampleId :

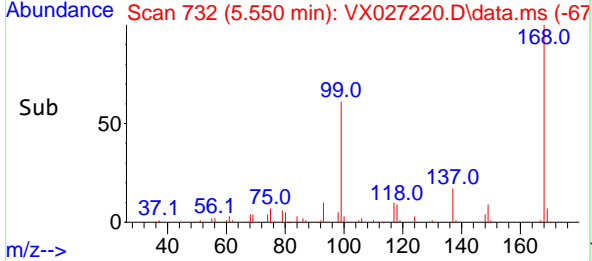
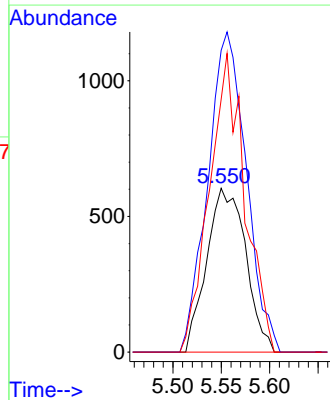
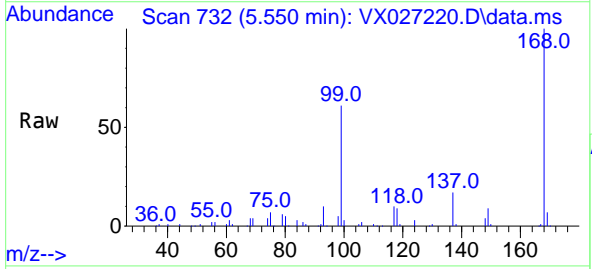


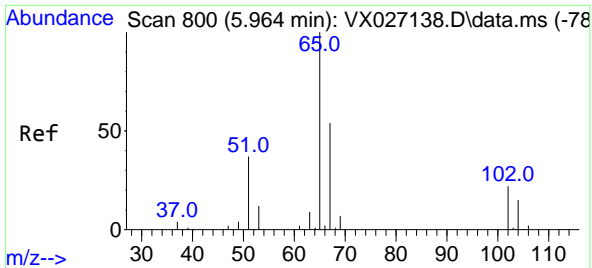
Tgt Ion: 76 Resp: 602
 Ion Ratio Lower Upper
 76 100
 78 0.0 7.5 11.3#



#31
 Cyclohexane
 Concen: 1.013 ug/l
 RT: 5.550 min Scan# 732
 Delta R.T. 0.074 min
 Lab File: VX027220.D
 Acq: 28 Feb 2022 15:15

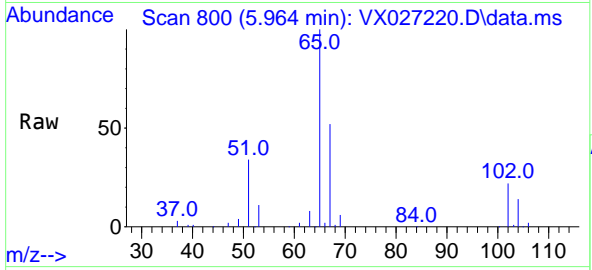
Tgt Ion: 56 Resp: 1694
 Ion Ratio Lower Upper
 56 100
 69 184.1 25.8 38.6#
 84 154.3 68.9 103.3#



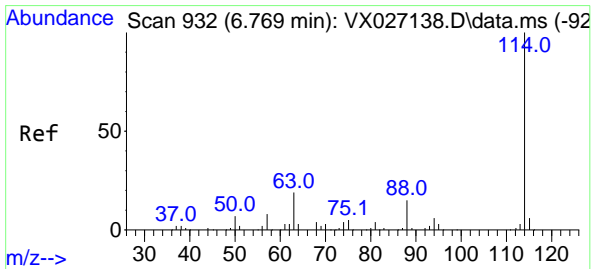
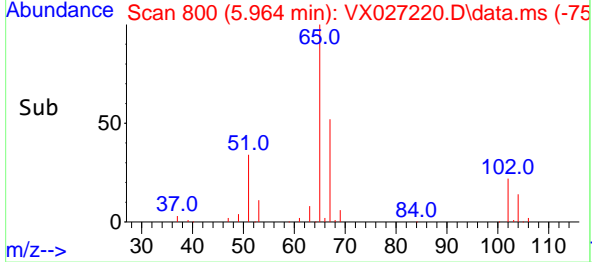
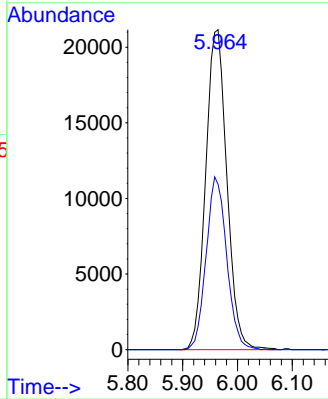


#33
 1,2-Dichloroethane-d4
 Concen: 50.807 ug/l
 RT: 5.964 min Scan# 800
 Delta R.T. 0.000 min
 Lab File: VX027220.D
 Acq: 28 Feb 2022 15:15

Instrument : MSVOA_X
 ClientSampleId :

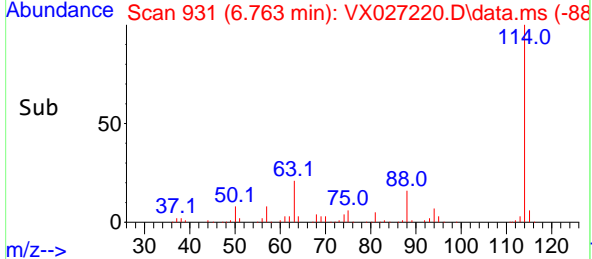
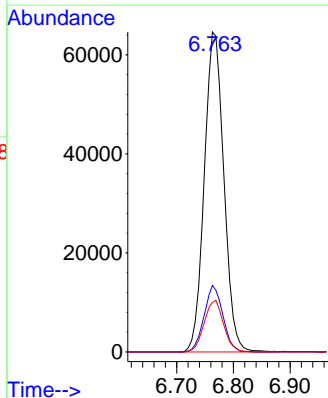
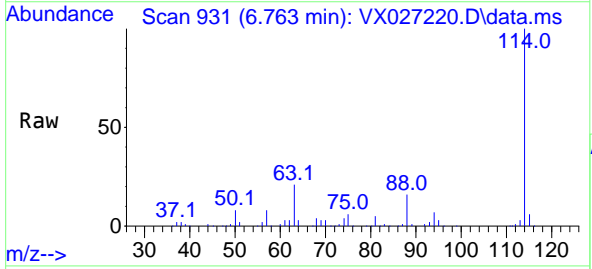


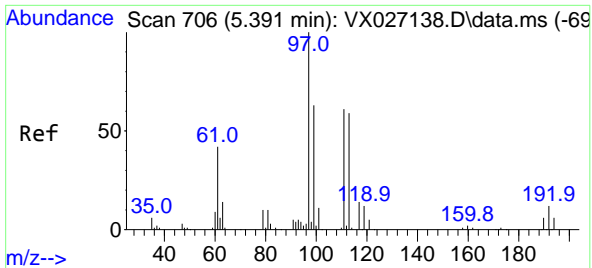
Tgt Ion: 65 Resp: 56704
 Ion Ratio Lower Upper
 65 100
 67 52.4 0.0 100.8



#34
 1,4-Difluorobenzene
 Concen: 50.000 ug/l
 RT: 6.763 min Scan# 931
 Delta R.T. -0.006 min
 Lab File: VX027220.D
 Acq: 28 Feb 2022 15:15

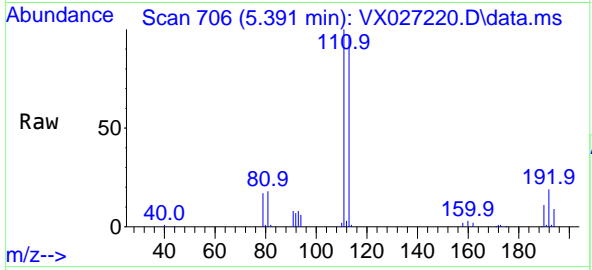
Tgt Ion: 114 Resp: 155172
 Ion Ratio Lower Upper
 114 100
 63 20.8 0.0 42.8
 88 15.5 0.0 33.0





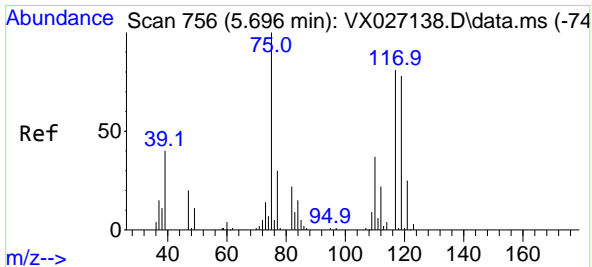
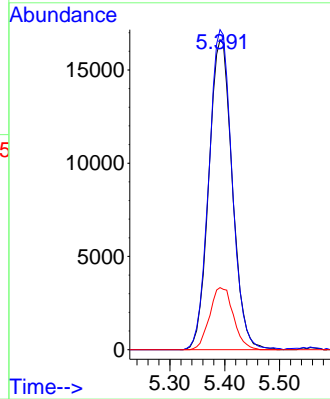
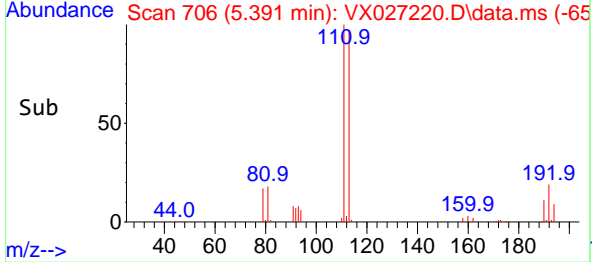
#35
 Dibromofluoromethane
 Concen: 51.122 ug/l
 RT: 5.391 min Scan# 706
 Delta R.T. 0.000 min
 Lab File: VX027220.D
 Acq: 28 Feb 2022 15:15

Instrument : MSVOA_X
 ClientSampleId :

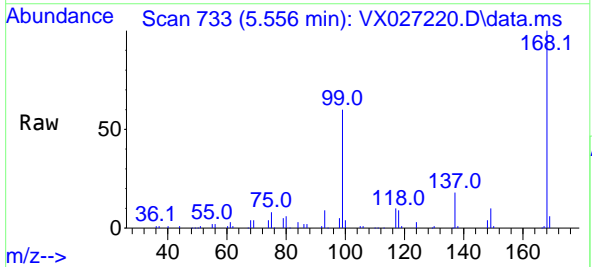


Tgt Ion: 113 Resp: 49240

Ion	Ratio	Lower	Upper
113	100		
111	102.5	81.2	121.8
192	20.3	15.0	22.4

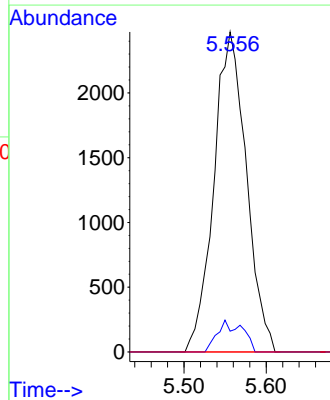
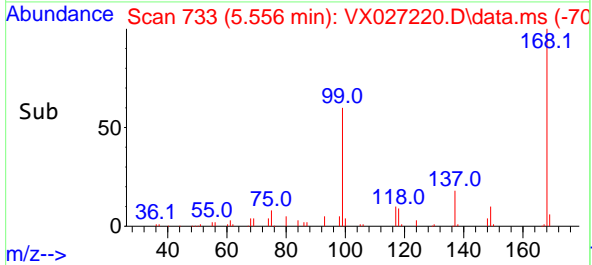


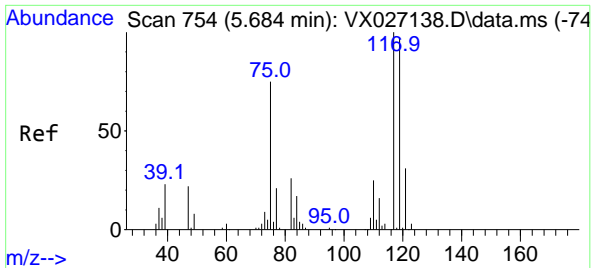
#36
 1,1-Dichloropropene
 Concen: 4.830 ug/l
 RT: 5.556 min Scan# 733
 Delta R.T. -0.140 min
 Lab File: VX027220.D
 Acq: 28 Feb 2022 15:15



Tgt Ion: 75 Resp: 6789

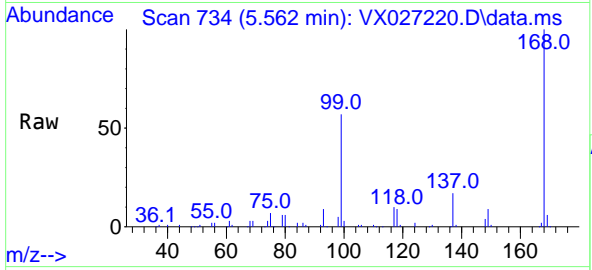
Ion	Ratio	Lower	Upper
75	100		
110	7.6	17.2	51.6#
77	0.0	24.6	36.8#



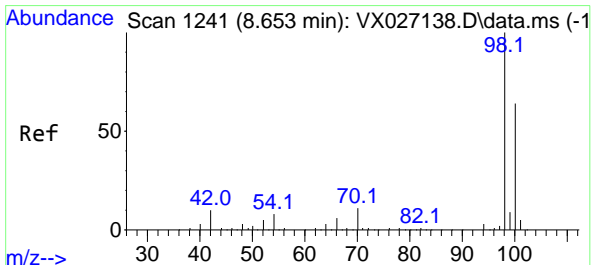
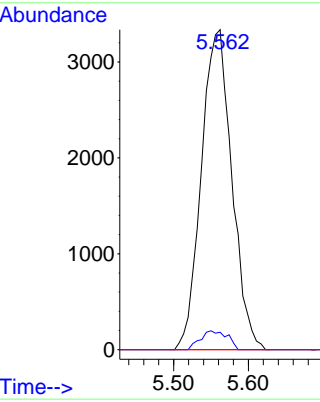
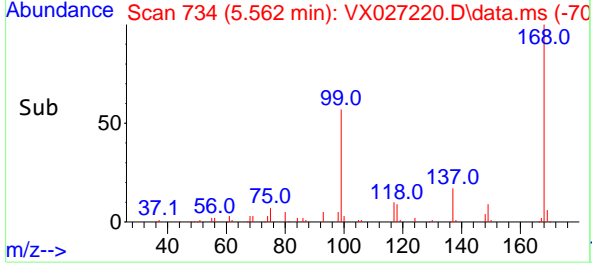


#38
 Carbon Tetrachloride
 Concen: 6.463 ug/l
 RT: 5.562 min Scan# 71
 Delta R.T. -0.122 min
 Lab File: VX027220.D
 Acq: 28 Feb 2022 15:15

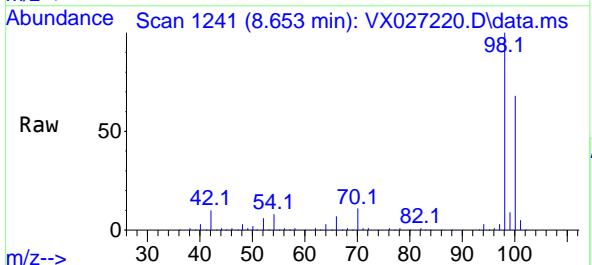
Instrument : MSVOA_X
 ClientSampleId :



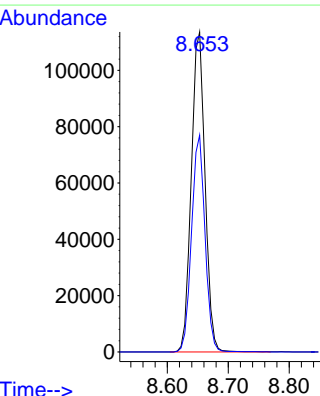
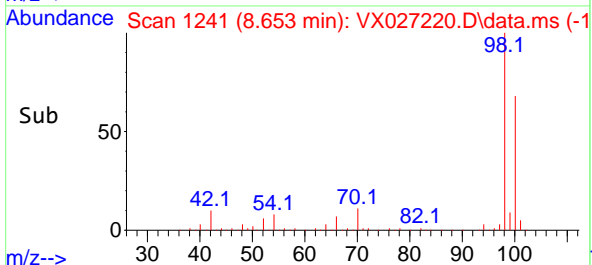
Tgt Ion:117 Resp: 9476
 Ion Ratio Lower Upper
 117 100
 119 5.5 74.7 112.1#
 121 0.0 25.4 38.0#

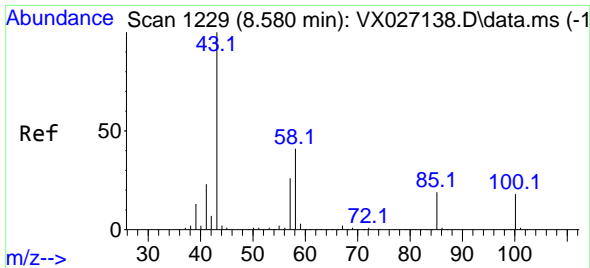


#50
 Toluene-d8
 Concen: 49.415 ug/l
 RT: 8.653 min Scan# 1241
 Delta R.T. -0.000 min
 Lab File: VX027220.D
 Acq: 28 Feb 2022 15:15



Tgt Ion: 98 Resp: 177965
 Ion Ratio Lower Upper
 98 100
 100 66.5 53.2 79.8

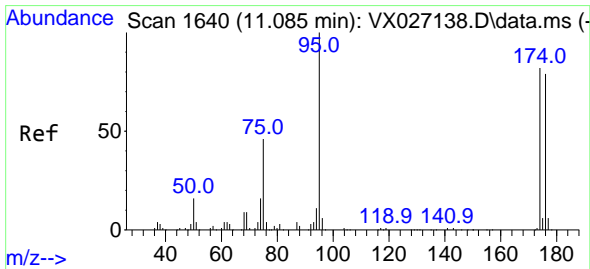
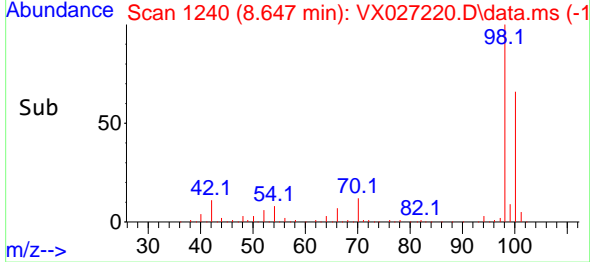
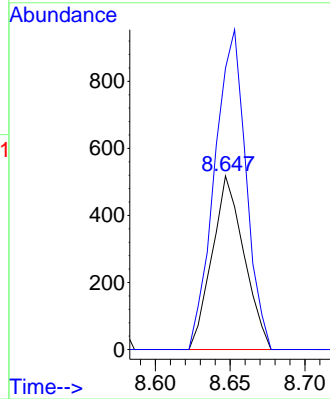
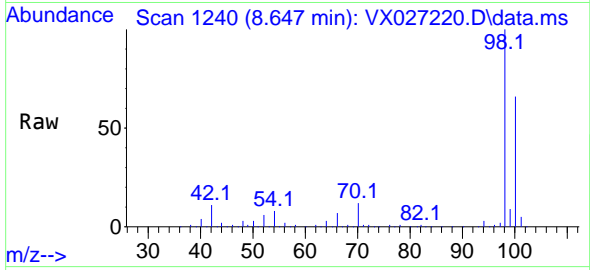




#51
 4-Methyl-2-Pentanone
 Concen: 0.498 ug/l
 RT: 8.647 min Scan# 11
 Delta R.T. 0.067 min
 Lab File: VX027220.D
 Acq: 28 Feb 2022 15:15

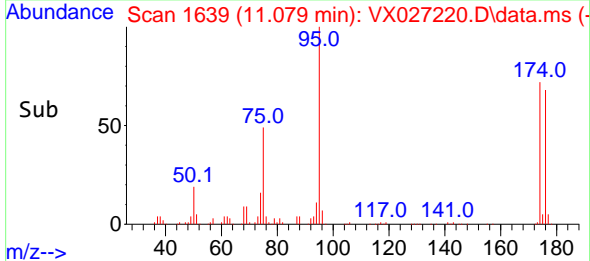
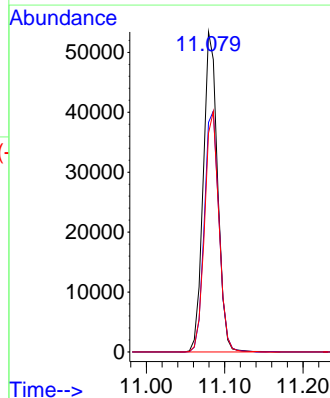
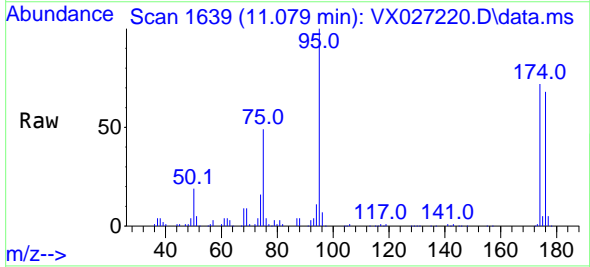
Instrument :
 MSVOA_X
 ClientSampleId :

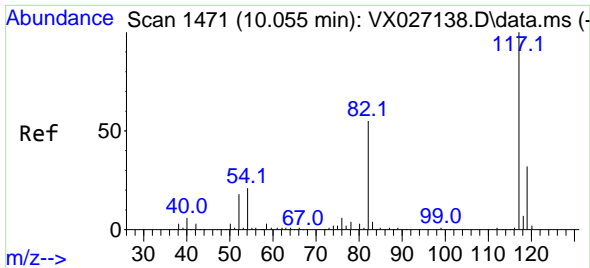
Tgt Ion: 43 Resp: 768
 Ion Ratio Lower Upper
 43 100
 58 181.5 30.5 45.7#



#62
 4-Bromofluorobenzene
 Concen: 49.043 ug/l
 RT: 11.079 min Scan# 1639
 Delta R.T. -0.006 min
 Lab File: VX027220.D
 Acq: 28 Feb 2022 15:15

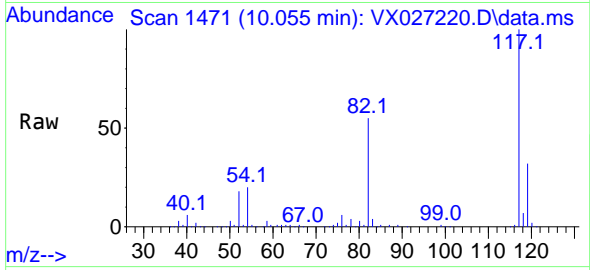
Tgt Ion: 95 Resp: 67798
 Ion Ratio Lower Upper
 95 100
 174 76.7 0.0 148.6
 176 75.0 0.0 141.4



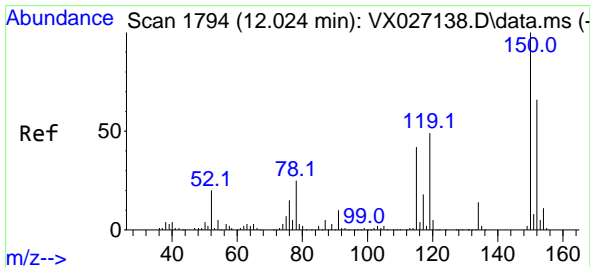
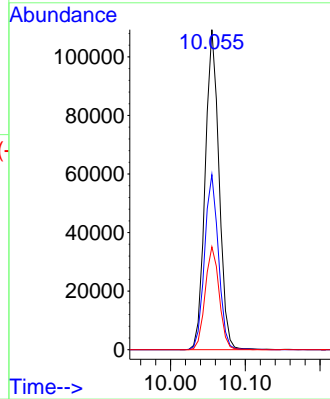
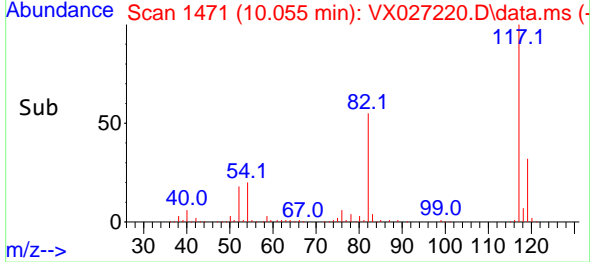


#63
 Chlorobenzene-d5
 Concen: 50.000 ug/l
 RT: 10.055 min Scan# 1471
 Delta R.T. 0.000 min
 Lab File: VX027220.D
 Acq: 28 Feb 2022 15:15

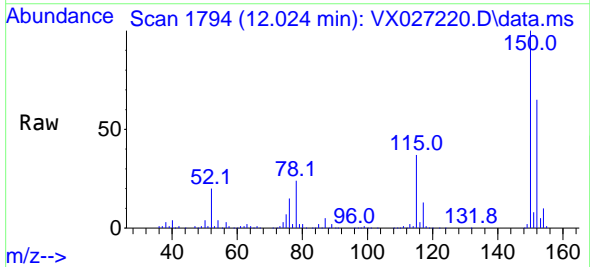
Instrument :
 MSVOA_X
 ClientSampleId :



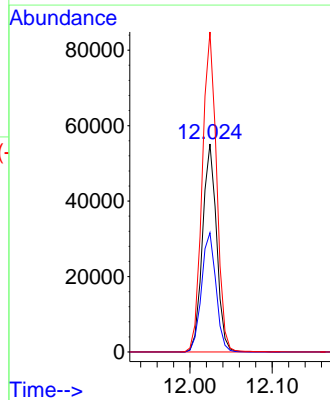
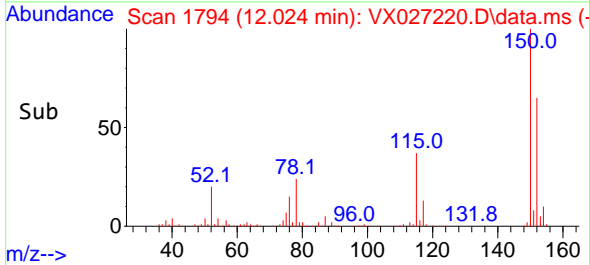
Tgt Ion:117 Resp: 140758
 Ion Ratio Lower Upper
 117 100
 82 54.7 45.2 67.8
 119 32.2 26.2 39.2

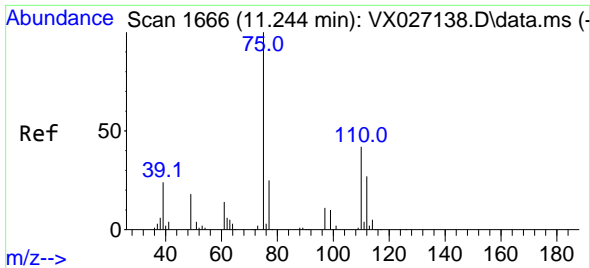


#72
 1,4-Dichlorobenzene-d4
 Concen: 50.000 ug/l
 RT: 12.024 min Scan# 1794
 Delta R.T. 0.000 min
 Lab File: VX027220.D
 Acq: 28 Feb 2022 15:15



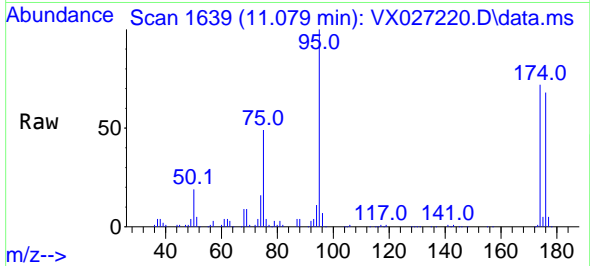
Tgt Ion:152 Resp: 65652
 Ion Ratio Lower Upper
 152 100
 115 58.8 44.2 132.6
 150 156.8 0.0 348.2



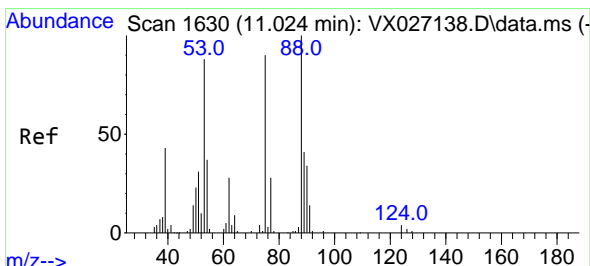
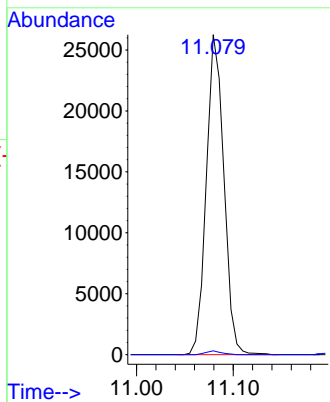
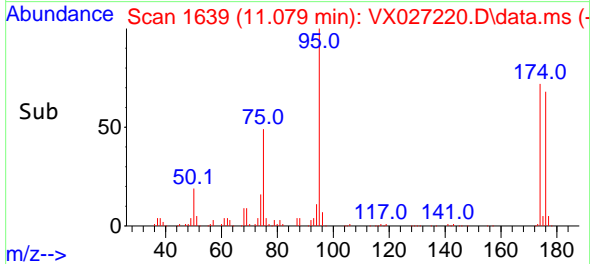


#76
 1,2,3-Trichloropropane
 Concen: 25.068 ug/l
 RT: 11.079 min Scan# 1639
 Delta R.T. -0.165 min
 Lab File: VX027220.D
 Acq: 28 Feb 2022 15:15

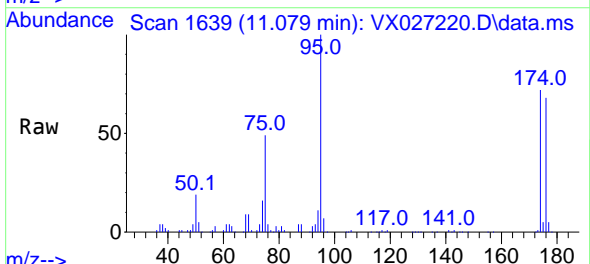
Instrument : MSVOA_X
 ClientSampleId :



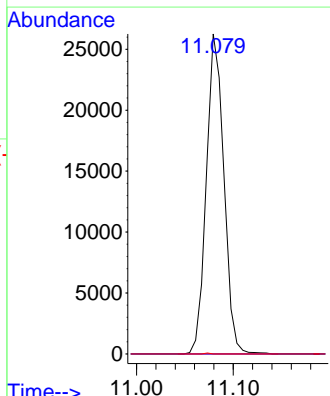
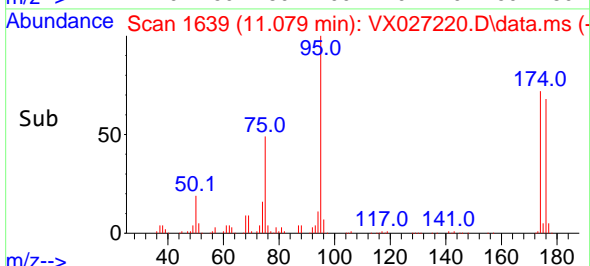
Tgt Ion: 75 Resp: 33149
 Ion Ratio Lower Upper
 75 100
 77 1.1 18.3 54.8#

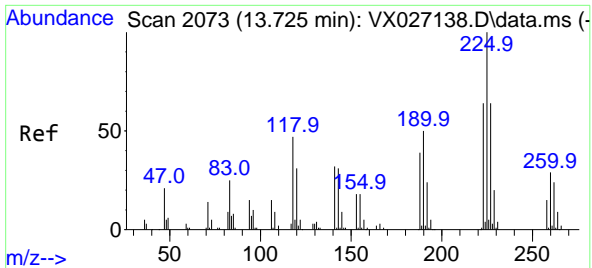


#81
 trans-1,4-Dichloro-2-butene
 Concen: 70.982 ug/l
 RT: 11.079 min Scan# 1639
 Delta R.T. 0.055 min
 Lab File: VX027220.D
 Acq: 28 Feb 2022 15:15



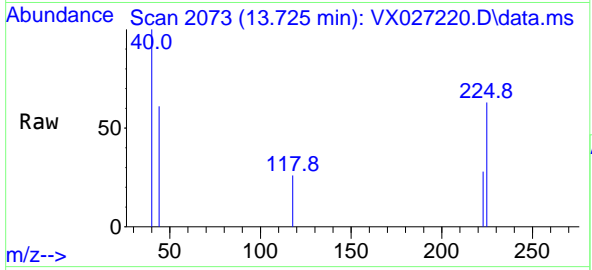
Tgt Ion: 75 Resp: 33149
 Ion Ratio Lower Upper
 75 100
 53 0.0 94.0 141.0#
 89 0.1 37.0 55.4#





#94
 Hexachlorobutadiene
 Concen: 0.200 ug/l
 RT: 13.725 min Scan# 20
 Delta R.T. 0.000 min
 Lab File: VX027220.D
 Acq: 28 Feb 2022 15:15

Instrument :
 MSVOA_X
 ClientSampleId :



Tgt Ion:225 Resp: 113

Ion	Ratio	Lower	Upper
225	100		
223	18.6	32.0	96.0#
227	0.0	32.3	96.9#

