

Data Path : Z:\voasrv\HPCHEM1\MSVOA_X\Data\VX022822\
 Data File : VX027225.D
 Acq On : 28 Feb 2022 17:12
 Operator : JC/MD
 Sample : N1688-10DL 5X
 Misc : 5.0mL/MSVOA_X/WATER
 ALS Vial : 11 Sample Multiplier: 1

Instrument :
 MSVOA_X
 ClientSampleId :

Quant Time: Mar 01 00:44:55 2022
 Quant Method : Z:\voasrv\HPCHEM1\MSVOA_X\Method\82X022322W.M
 Quant Title : SW846 8260
 QLast Update : Wed Feb 23 13:06:57 2022
 Response via : Initial Calibration

Compound	R.T.	QIon	Response	Conc Units	Dev(Min)

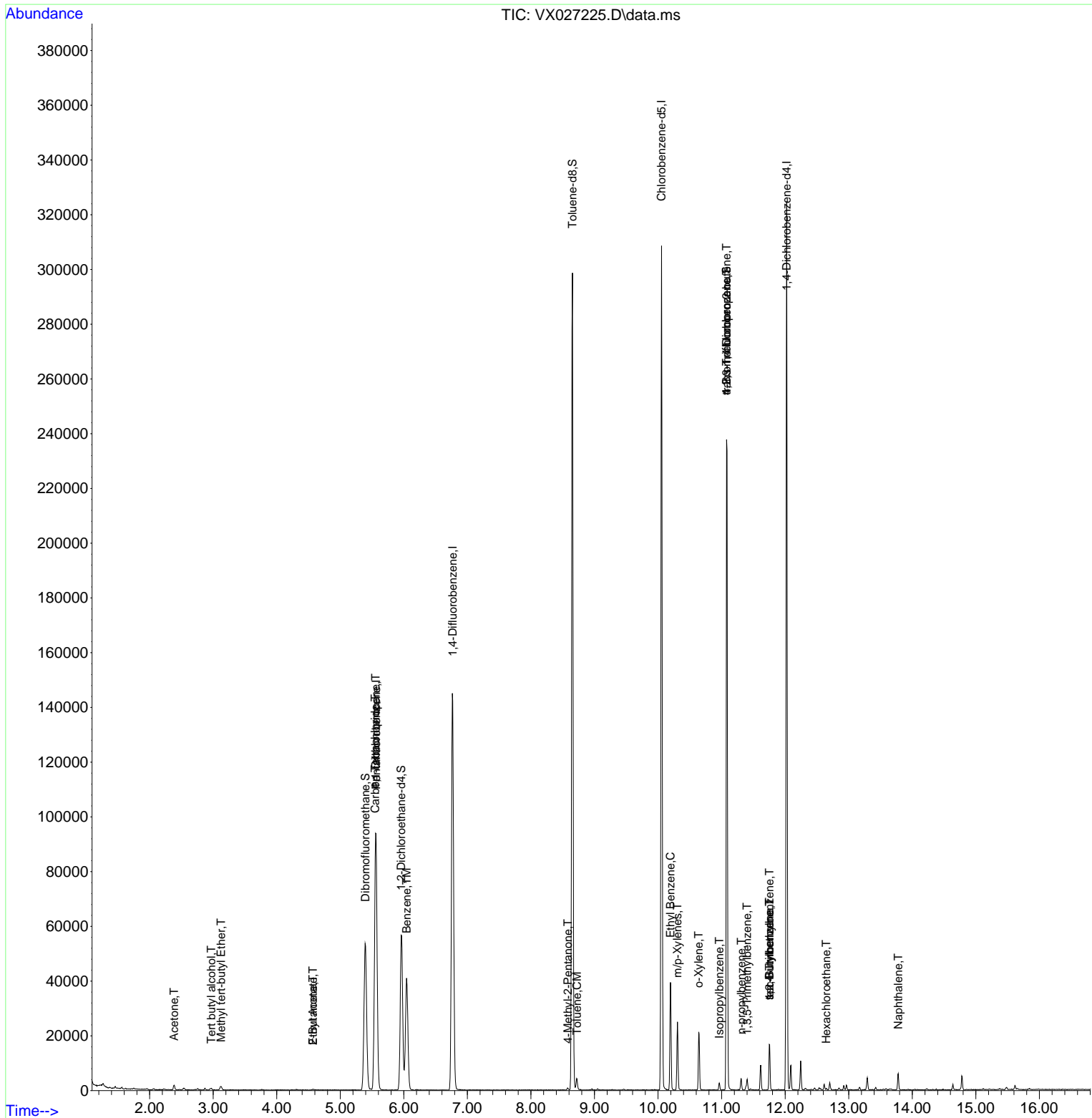
Internal Standards					
1) Pentafluorobenzene	5.562	168	92686	50.000 ug/l	0.00
34) 1,4-Difluorobenzene	6.769	114	153051	50.000 ug/l	0.00
63) Chlorobenzene-d5	10.055	117	140452	50.000 ug/l	0.00
72) 1,4-Dichlorobenzene-d4	12.024	152	65320	50.000 ug/l	0.00
System Monitoring Compounds					
33) 1,2-Dichloroethane-d4	5.958	65	54875	49.296 ug/l	0.00
Spiked Amount	50.000	Range 78 - 117	Recovery =	98.600%	
35) Dibromofluoromethane	5.397	113	47622	50.128 ug/l	0.00
Spiked Amount	50.000	Range 75 - 124	Recovery =	100.260%	
50) Toluene-d8	8.653	98	179128	50.427 ug/l	0.00
Spiked Amount	50.000	Range 92 - 112	Recovery =	100.860%	
62) 4-Bromofluorobenzene	11.079	95	67370	49.409 ug/l	0.00
Spiked Amount	50.000	Range 83 - 123	Recovery =	98.820%	
Target Compounds					
					Qvalue
5) Bromomethane	1.623	94	135	Below Cal	93
11) Tert butyl alcohol	2.971	59	899	4.151 ug/l #	75
16) Acetone	2.386	43	1931	3.951 ug/l	95
19) Methyl tert-butyl Ether	3.123	73	1508	0.487 ug/l	94
25) 2-Butanone	4.568	43	450	0.578 ug/l #	50
36) 1,1-Dichloropropene	5.556	75	6669	4.810 ug/l #	50
37) Ethyl Acetate	4.568	43	450	0.296 ug/l #	69
38) Carbon Tetrachloride	5.550	117	9256	6.401 ug/l #	17
40) Benzene	6.043	78	50190	12.379 ug/l	99
51) 4-Methyl-2-Pentanone	8.580	43	552	0.363 ug/l	90
52) Toluene	8.726	92	1734	0.668 ug/l	98
67) Ethyl Benzene	10.195	91	22497	4.476 ug/l	97
68) m/p-Xylenes	10.305	106	5661	2.930 ug/l	95
69) o-Xylene	10.640	106	4841	2.496 ug/l	98
73) Isopropylbenzene	10.963	105	1528	0.327 ug/l	95
76) 1,2,3-Trichloropropane	11.079	75	32933	25.031 ug/l #	40
78) n-propylbenzene	11.311	91	2992	0.563 ug/l	99
80) 1,3,5-Trimethylbenzene	11.402	105	2765	0.704 ug/l	73
81) trans-1,4-Dichloro-2-b...	11.079	75	32933	70.885 ug/l #	3
83) tert-Butylbenzene	11.756	119	1051	0.275 ug/l #	74
84) 1,2,4-Trimethylbenzene	11.756	105	7945	2.032 ug/l	99
85) sec-Butylbenzene	11.756	105	7945	1.658 ug/l #	56
90) Hexachloroethane	12.646	117	366	0.578 ug/l #	14
95) Naphthalene	13.780	128	3829	0.834 ug/l	98

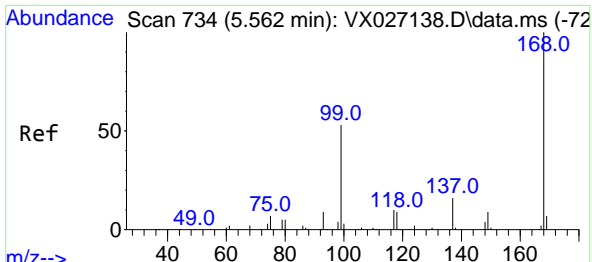
(#) = qualifier out of range (m) = manual integration (+) = signals summed

Data Path : Z:\voasrv\HPCHEM1\MSVOA_X\Data\VX022822\
 Data File : VX027225.D
 Acq On : 28 Feb 2022 17:12
 Operator : JC/MD
 Sample : N1688-10DL 5X
 Misc : 5.0mL/MSVOA_X/WATER
 ALS Vial : 11 Sample Multiplier: 1

Instrument :
 MSVOA_X
 ClientSampleId :

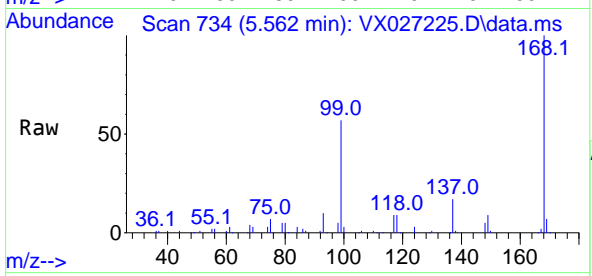
Quant Time: Mar 01 00:44:55 2022
 Quant Method : Z:\voasrv\HPCHEM1\MSVOA_X\Method\82X022322W.M
 Quant Title : SW846 8260
 QLast Update : Wed Feb 23 13:06:57 2022
 Response via : Initial Calibration



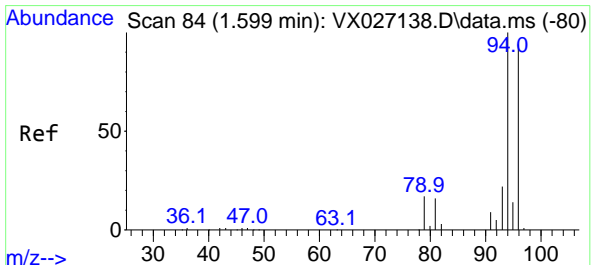
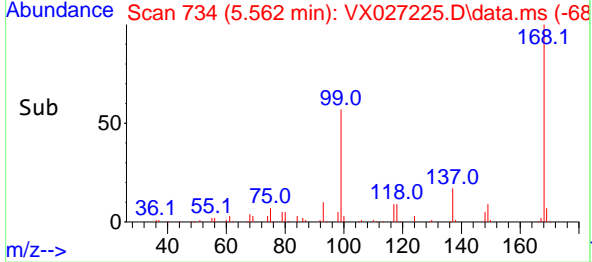
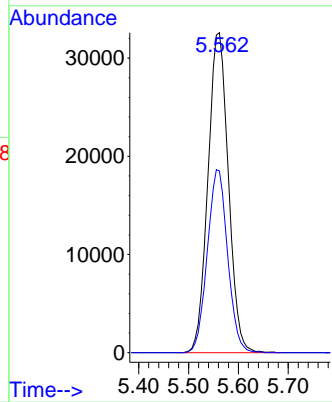


#1
 Pentafluorobenzene
 Concen: 50.000 ug/l
 RT: 5.562 min Scan# 71
 Delta R.T. -0.000 min
 Lab File: VX027225.D
 Acq: 28 Feb 2022 17:12

Instrument : MSVOA_X
 ClientSampleId :

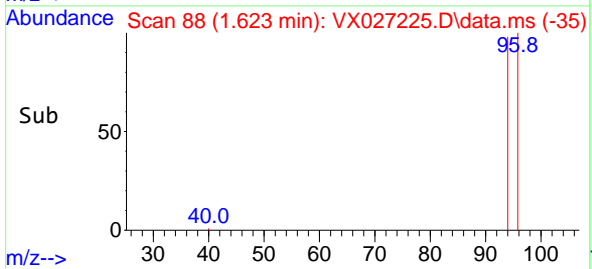
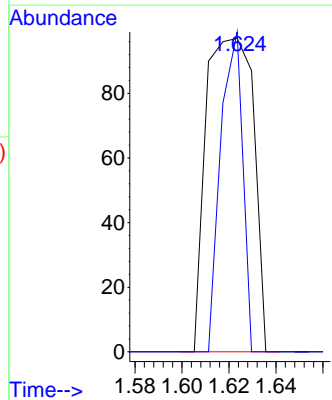
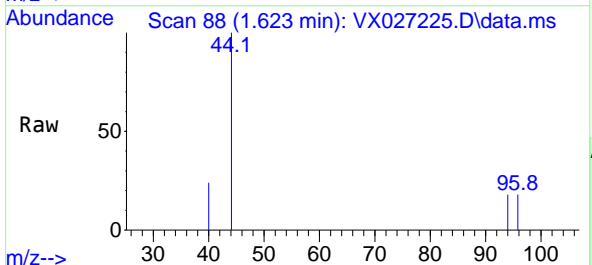


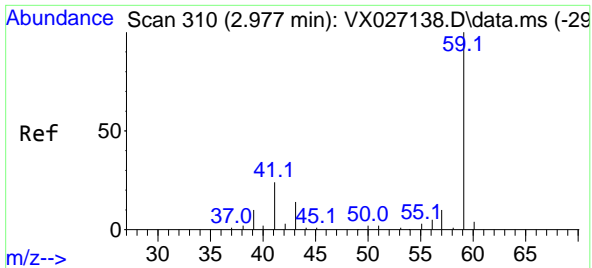
Tgt Ion:168 Resp: 92686
 Ion Ratio Lower Upper
 168 100
 99 56.8 50.3 75.5



#5
 Bromomethane
 Concen: Below Cal
 RT: 1.623 min Scan# 88
 Delta R.T. 0.024 min
 Lab File: VX027225.D
 Acq: 28 Feb 2022 17:12

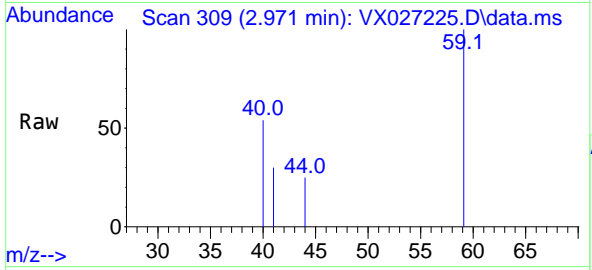
Tgt Ion: 94 Resp: 135
 Ion Ratio Lower Upper
 94 100
 96 102.1 75.9 113.9



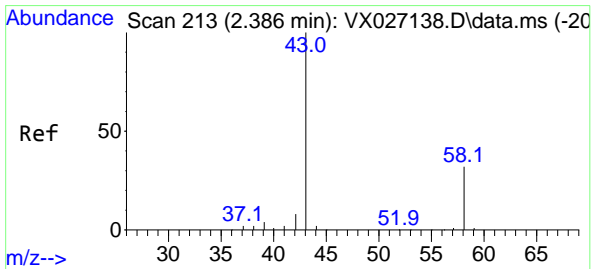
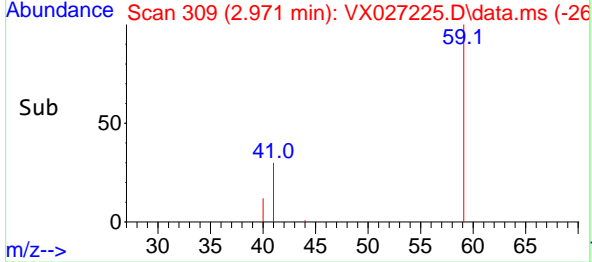
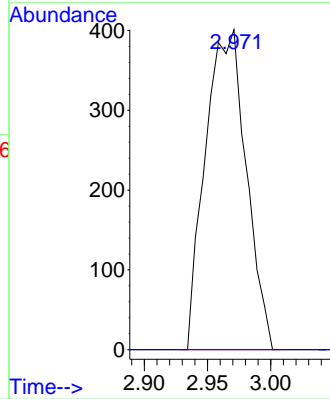


#11
 Tert butyl alcohol
 Concen: 4.151 ug/l
 RT: 2.971 min Scan# 309
 Delta R.T. -0.006 min
 Lab File: VX027225.D
 Acq: 28 Feb 2022 17:12

Instrument : MSVOA_X
 ClientSampleId :

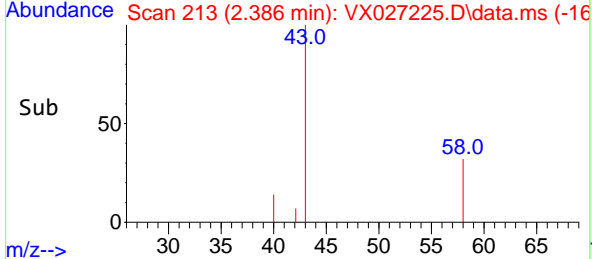
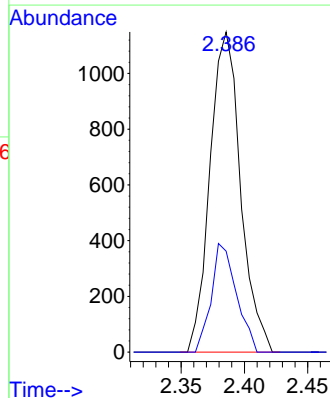
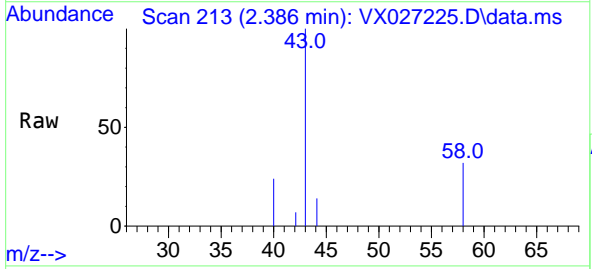


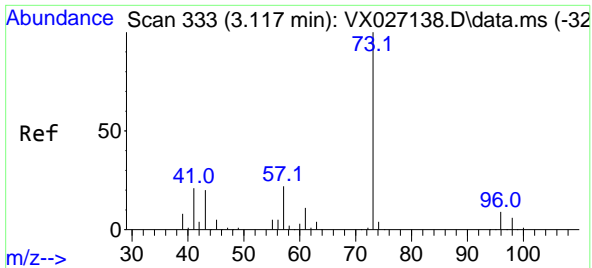
Tgt Ion: 59 Resp: 899
 Ion Ratio Lower Upper
 59 100
 57 0.0 7.2 10.8#



#16
 Acetone
 Concen: 3.951 ug/l
 RT: 2.386 min Scan# 213
 Delta R.T. -0.000 min
 Lab File: VX027225.D
 Acq: 28 Feb 2022 17:12

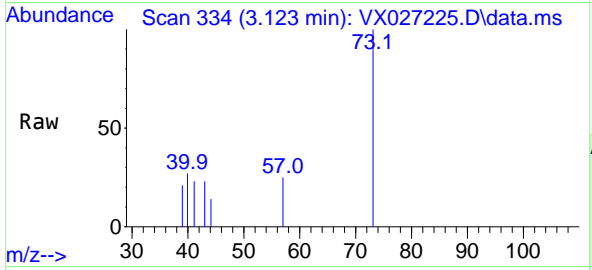
Tgt Ion: 43 Resp: 1931
 Ion Ratio Lower Upper
 43 100
 58 31.5 23.0 34.6



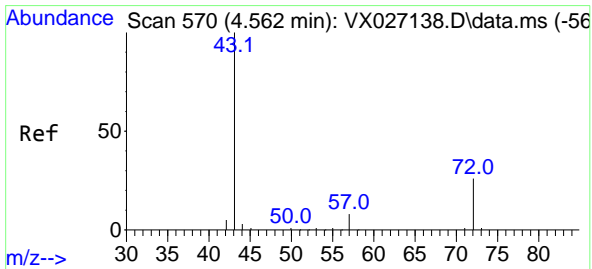
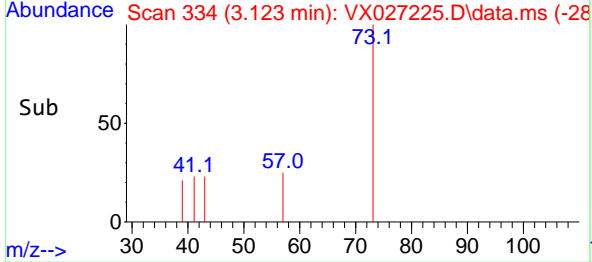
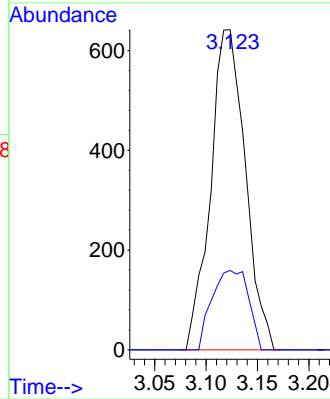


#19
 Methyl tert-butyl Ether
 Concen: 0.487 ug/l
 RT: 3.123 min Scan# 31
 Delta R.T. 0.006 min
 Lab File: VX027225.D
 Acq: 28 Feb 2022 17:12

Instrument :
 MSVOA_X
 ClientSampleId :

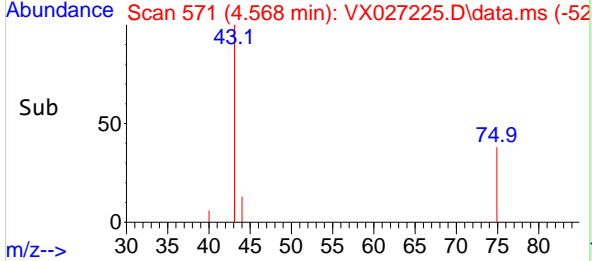
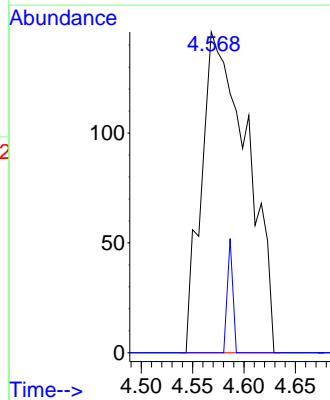
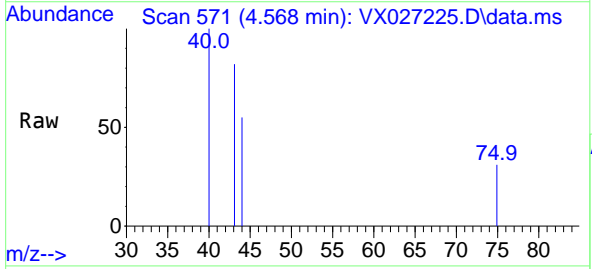


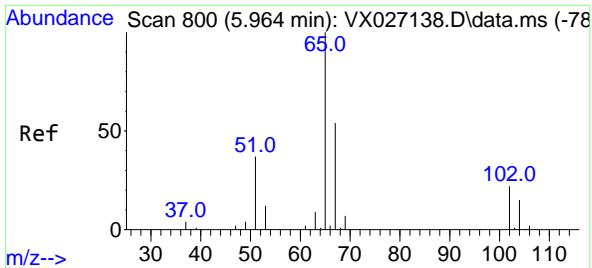
Tgt Ion: 73 Resp: 1508
 Ion Ratio Lower Upper
 73 100
 57 24.8 17.4 26.2



#25
 2-Butanone
 Concen: 0.578 ug/l
 RT: 4.568 min Scan# 571
 Delta R.T. 0.006 min
 Lab File: VX027225.D
 Acq: 28 Feb 2022 17:12

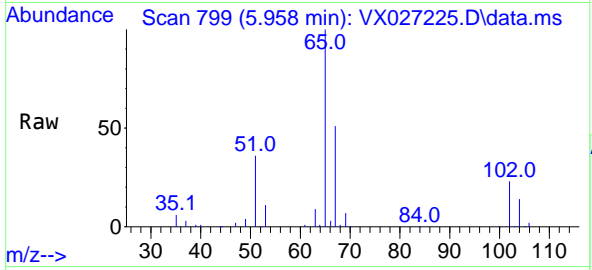
Tgt Ion: 43 Resp: 450
 Ion Ratio Lower Upper
 43 100
 72 0.0 20.4 30.6#



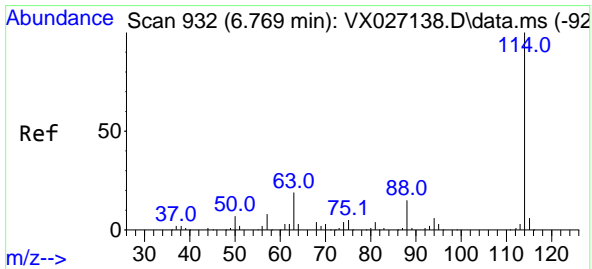
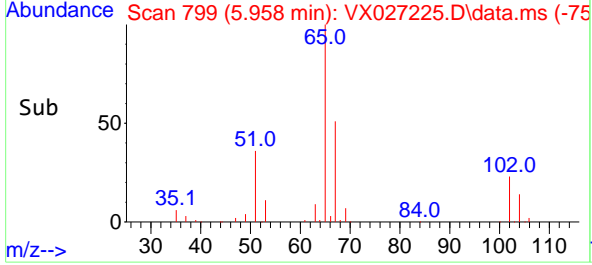
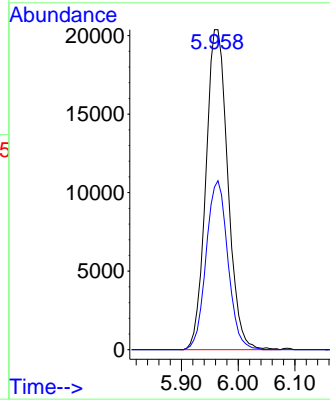


#33
 1,2-Dichloroethane-d4
 Concen: 49.296 ug/l
 RT: 5.958 min Scan# 799
 Delta R.T. -0.006 min
 Lab File: VX027225.D
 Acq: 28 Feb 2022 17:12

Instrument : MSVOA_X
 ClientSampleId :

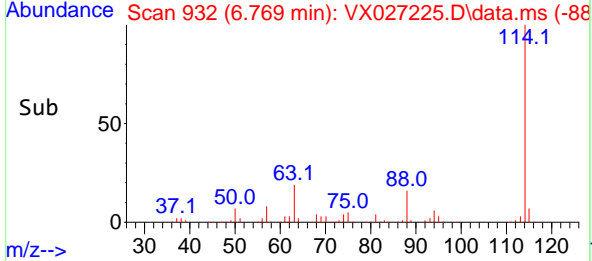
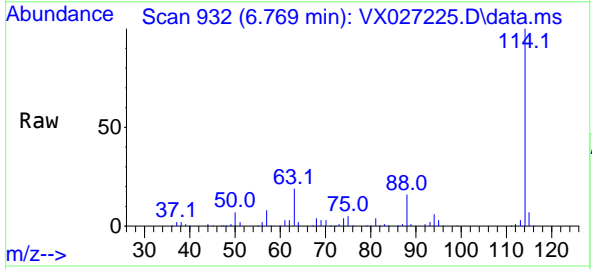
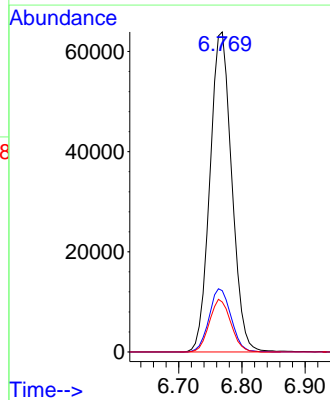


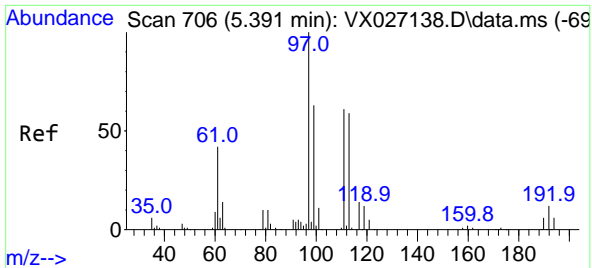
Tgt Ion: 65 Resp: 54875
 Ion Ratio Lower Upper
 65 100
 67 52.2 0.0 100.8



#34
 1,4-Difluorobenzene
 Concen: 50.000 ug/l
 RT: 6.769 min Scan# 932
 Delta R.T. -0.000 min
 Lab File: VX027225.D
 Acq: 28 Feb 2022 17:12

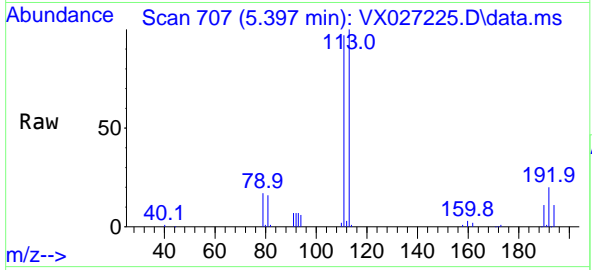
Tgt Ion: 114 Resp: 153051
 Ion Ratio Lower Upper
 114 100
 63 19.2 0.0 42.8
 88 15.6 0.0 33.0



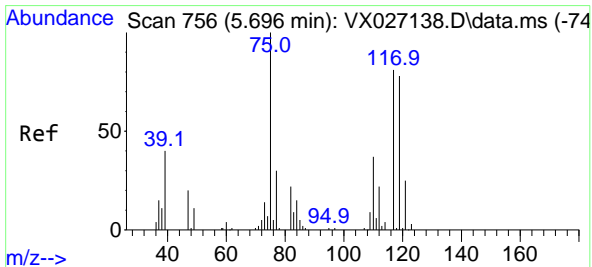
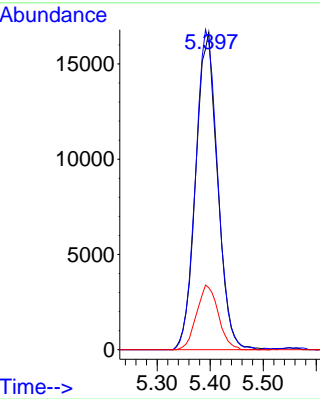
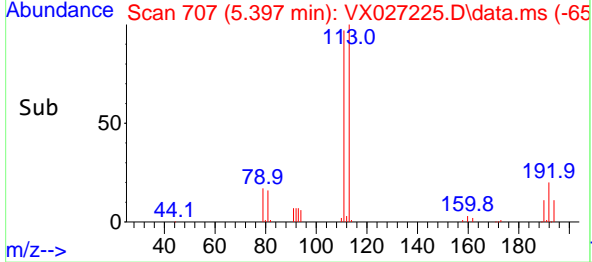


#35
 Dibromofluoromethane
 Concen: 50.128 ug/l
 RT: 5.397 min Scan# 706
 Delta R.T. 0.006 min
 Lab File: VX027225.D
 Acq: 28 Feb 2022 17:12

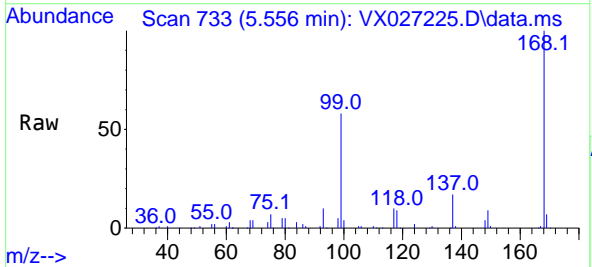
Instrument : MSVOA_X
 ClientSampleId :



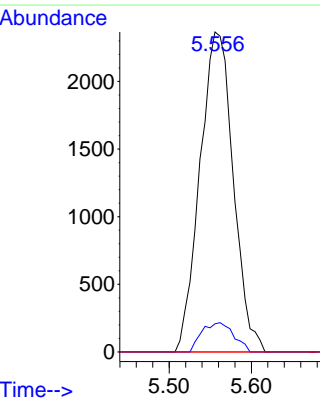
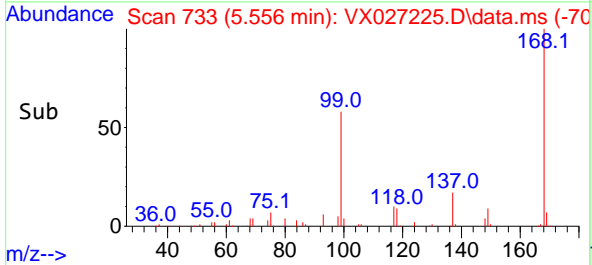
Tgt Ion:113 Resp: 47622
 Ion Ratio Lower Upper
 113 100
 111 102.0 81.2 121.8
 192 20.2 15.0 22.4

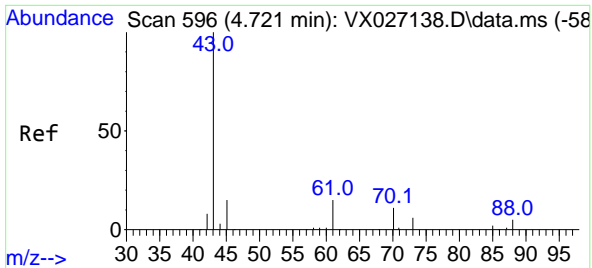


#36
 1,1-Dichloropropene
 Concen: 4.810 ug/l
 RT: 5.556 min Scan# 733
 Delta R.T. -0.140 min
 Lab File: VX027225.D
 Acq: 28 Feb 2022 17:12



Tgt Ion: 75 Resp: 6669
 Ion Ratio Lower Upper
 75 100
 110 8.8 17.2 51.6#
 77 0.0 24.6 36.8#



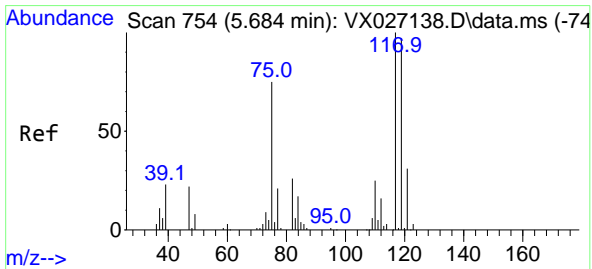
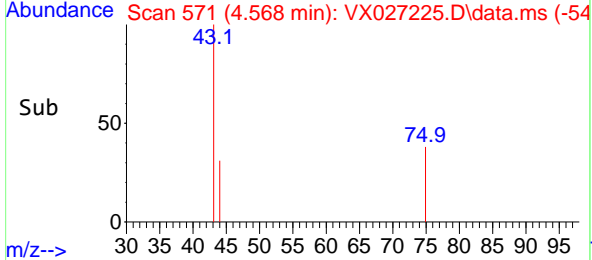
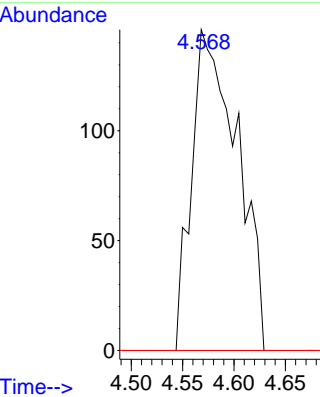
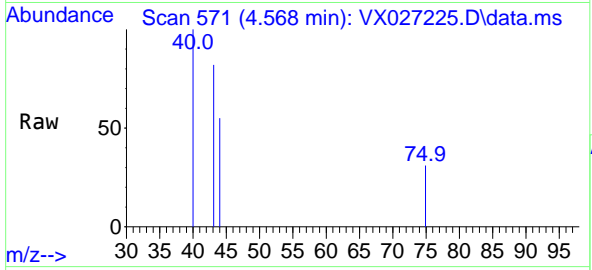


#37
 Ethyl Acetate
 Concen: 0.296 ug/l
 RT: 4.568 min Scan# 51
 Delta R.T. -0.153 min
 Lab File: VX027225.D
 Acq: 28 Feb 2022 17:12

Instrument : MSVOA_X
 ClientSampleId :

Tgt Ion: 43 Resp: 450

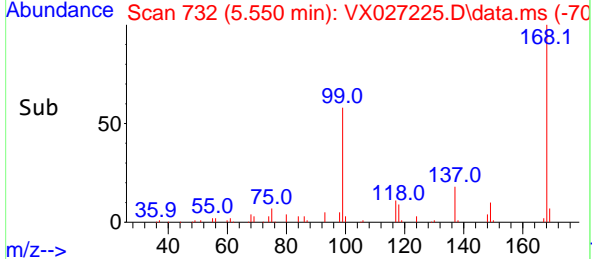
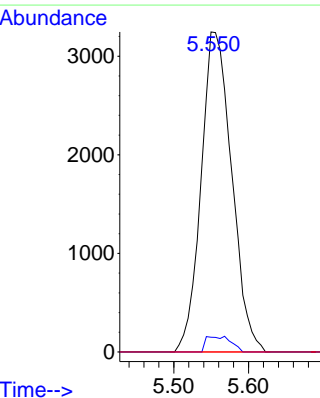
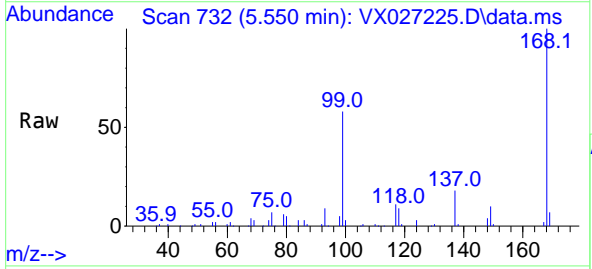
Ion	Ratio	Lower	Upper
43	100		
61	0.0	10.6	16.0#
70	0.0	8.5	12.7#

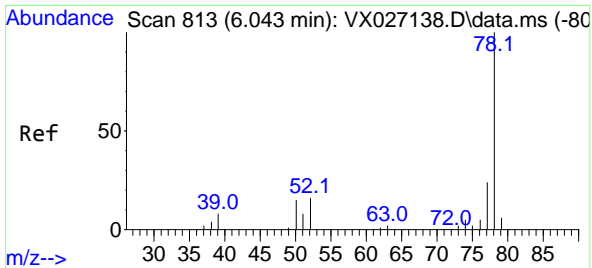


#38
 Carbon Tetrachloride
 Concen: 6.401 ug/l
 RT: 5.550 min Scan# 732
 Delta R.T. -0.134 min
 Lab File: VX027225.D
 Acq: 28 Feb 2022 17:12

Tgt Ion: 117 Resp: 9256

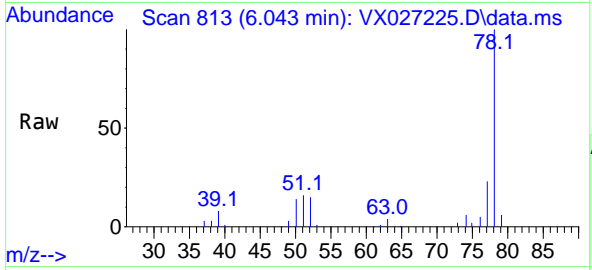
Ion	Ratio	Lower	Upper
117	100		
119	4.6	74.7	112.1#
121	0.0	25.4	38.0#



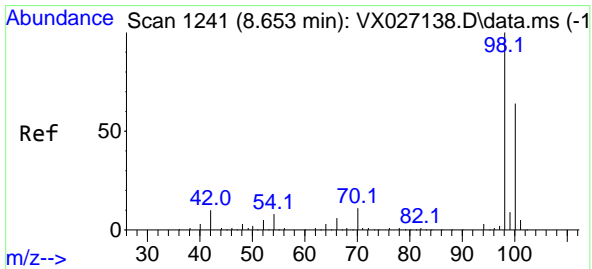
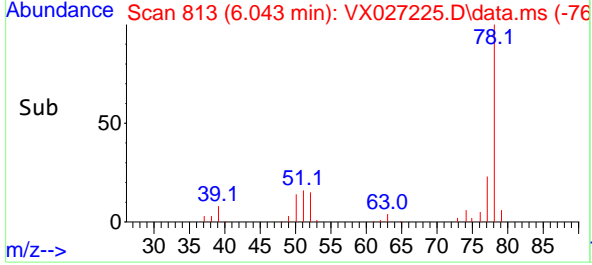
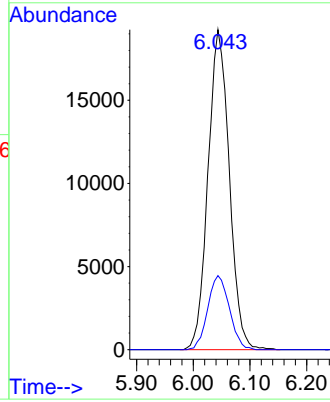


#40
Benzene
Concen: 12.379 ug/l
RT: 6.043 min Scan# 813
Delta R.T. 0.000 min
Lab File: VX027225.D
Acq: 28 Feb 2022 17:12

Instrument :
MSVOA_X
ClientSampleId :

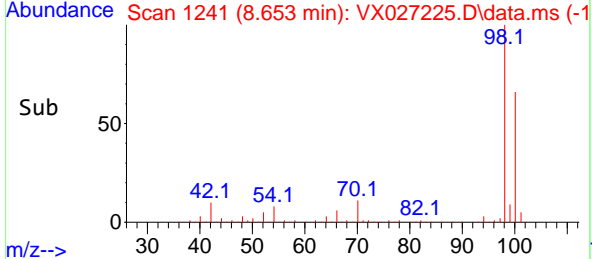
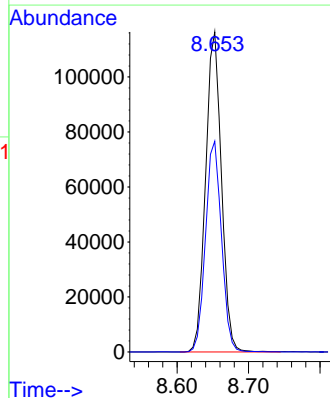
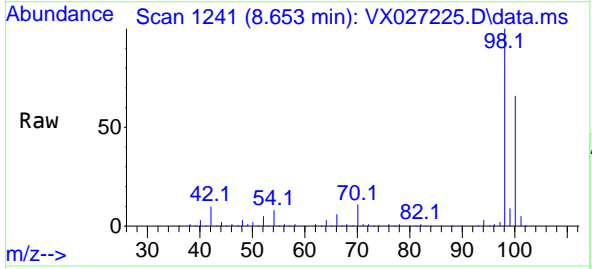


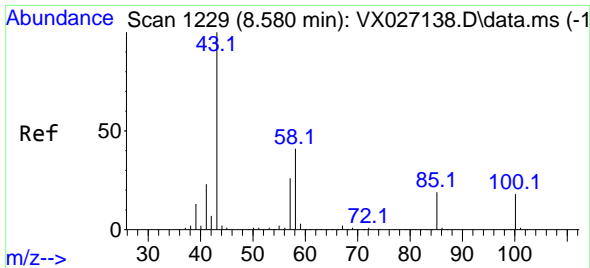
Tgt Ion: 78 Resp: 50190
Ion Ratio Lower Upper
78 100
77 23.2 18.9 28.3



#50
Toluene-d8
Concen: 50.427 ug/l
RT: 8.653 min Scan# 1241
Delta R.T. -0.000 min
Lab File: VX027225.D
Acq: 28 Feb 2022 17:12

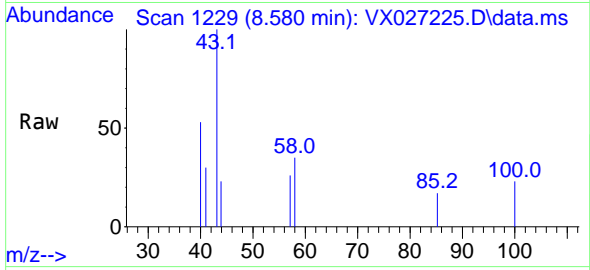
Tgt Ion: 98 Resp: 179128
Ion Ratio Lower Upper
98 100
100 66.3 53.2 79.8



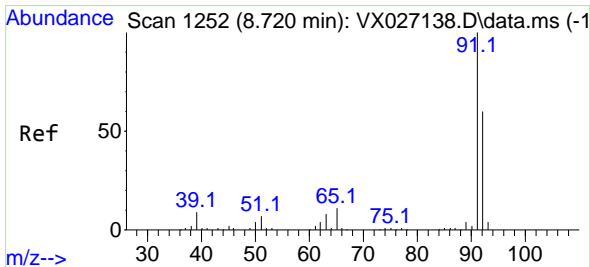
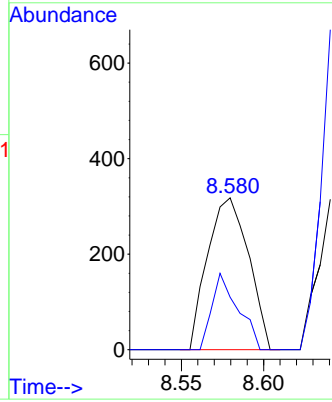
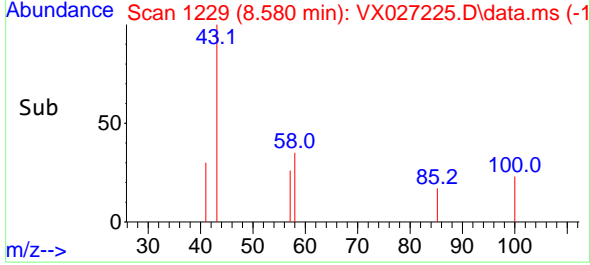


#51
 4-Methyl-2-Pentanone
 Concen: 0.363 ug/l
 RT: 8.580 min Scan# 11
 Delta R.T. -0.000 min
 Lab File: VX027225.D
 Acq: 28 Feb 2022 17:12

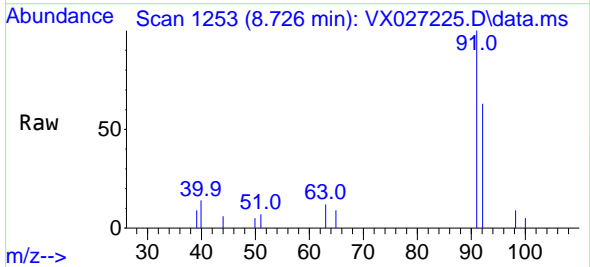
Instrument :
 MSVOA_X
 ClientSampleId :



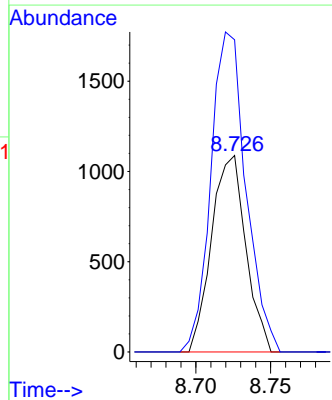
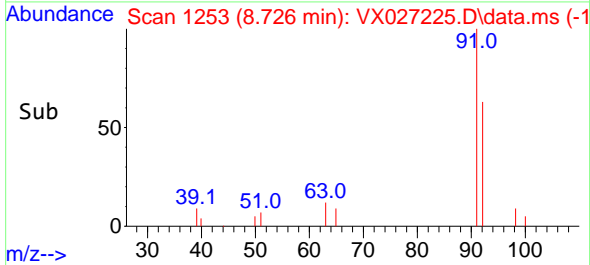
Tgt Ion: 43 Resp: 552
 Ion Ratio Lower Upper
 43 100
 58 32.1 30.5 45.7

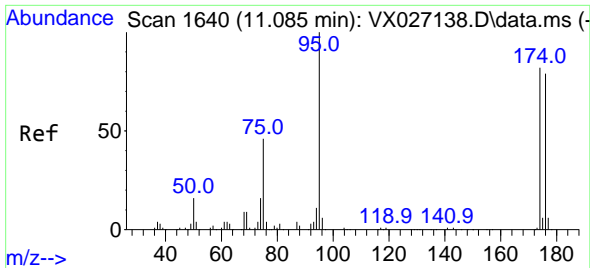


#52
 Toluene
 Concen: 0.668 ug/l
 RT: 8.726 min Scan# 1253
 Delta R.T. 0.006 min
 Lab File: VX027225.D
 Acq: 28 Feb 2022 17:12



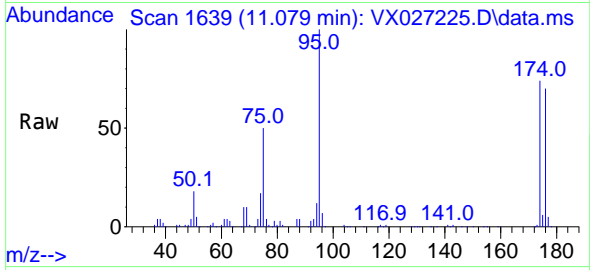
Tgt Ion: 92 Resp: 1734
 Ion Ratio Lower Upper
 92 100
 91 167.0 135.7 203.5



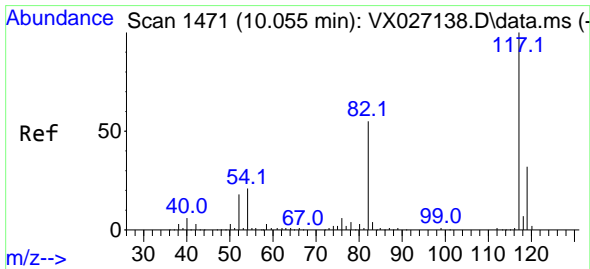
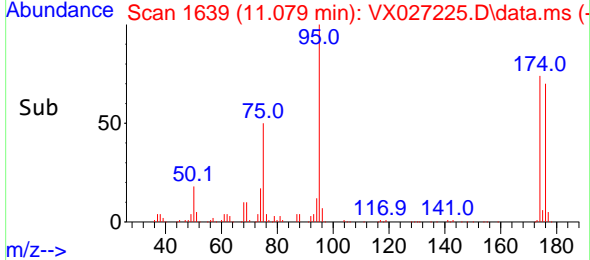
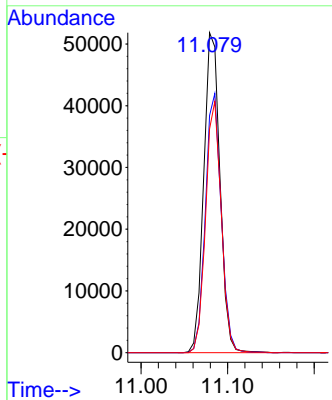


#62
 4-Bromofluorobenzene
 Concen: 49.409 ug/l
 RT: 11.079 min Scan# 1639
 Delta R.T. -0.006 min
 Lab File: VX027225.D
 Acq: 28 Feb 2022 17:12

Instrument : MSVOA_X
 ClientSampleId :

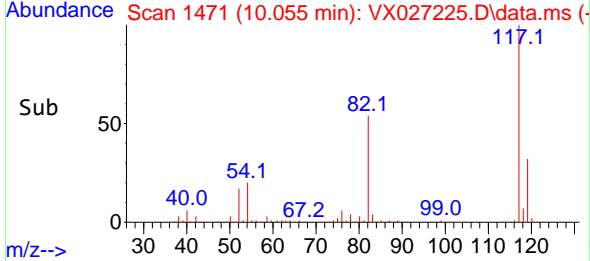
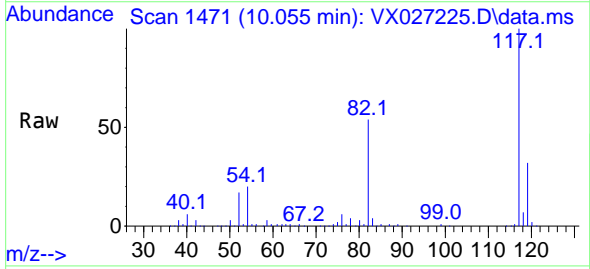
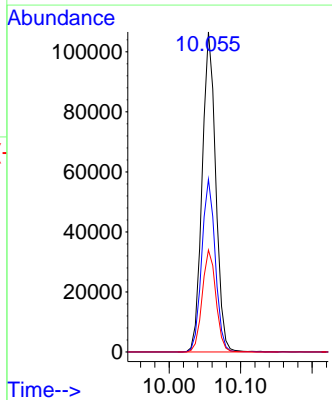


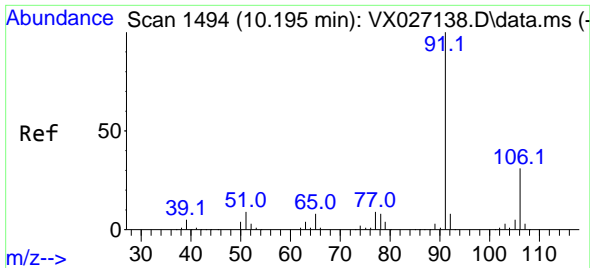
Tgt Ion: 95 Resp: 67370
 Ion Ratio Lower Upper
 95 100
 174 79.1 0.0 148.6
 176 75.8 0.0 141.4



#63
 Chlorobenzene-d5
 Concen: 50.000 ug/l
 RT: 10.055 min Scan# 1471
 Delta R.T. -0.000 min
 Lab File: VX027225.D
 Acq: 28 Feb 2022 17:12

Tgt Ion: 117 Resp: 140452
 Ion Ratio Lower Upper
 117 100
 82 53.9 45.2 67.8
 119 31.9 26.2 39.2

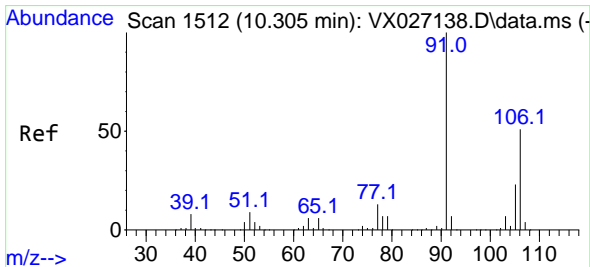
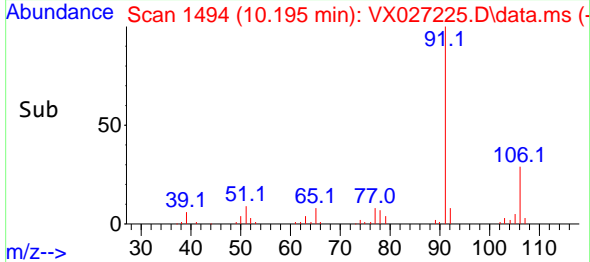
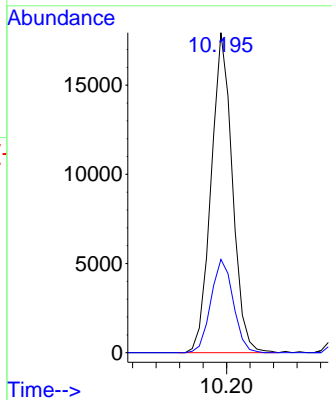
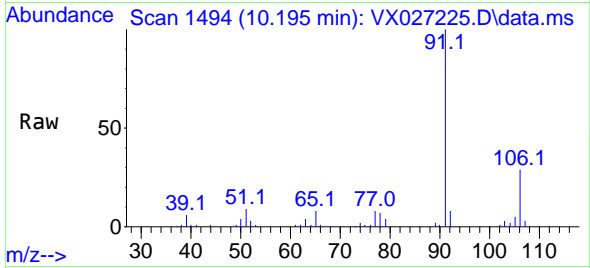




#67
 Ethyl Benzene
 Concen: 4.476 ug/l
 RT: 10.195 min Scan# 1494
 Delta R.T. 0.000 min
 Lab File: VX027225.D
 Acq: 28 Feb 2022 17:12

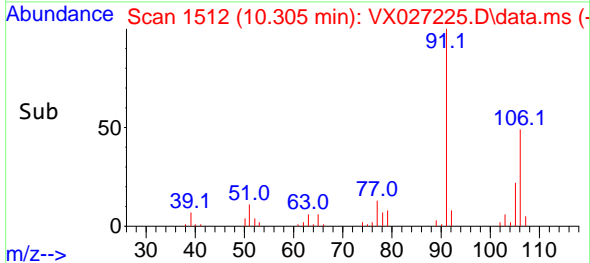
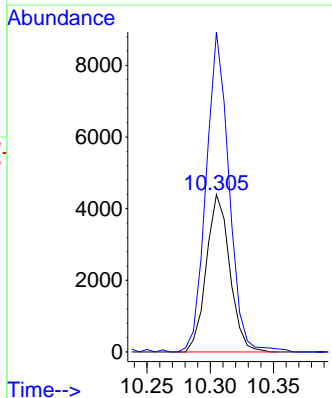
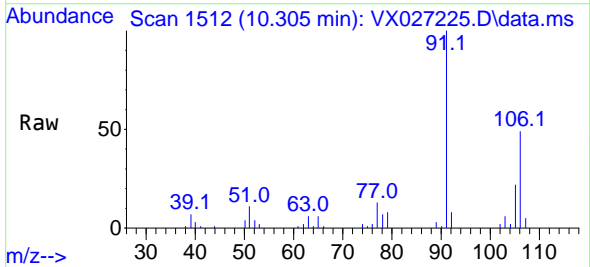
Instrument : MSVOA_X
 ClientSampleId :

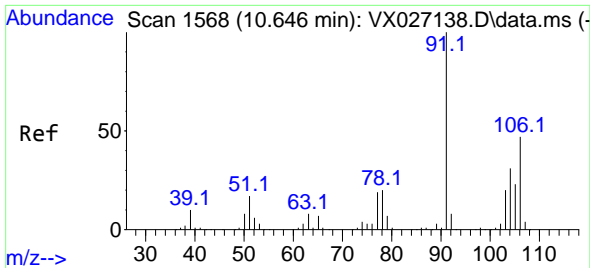
Tgt Ion: 91 Resp: 22497
 Ion Ratio Lower Upper
 91 100
 106 29.1 24.7 37.1



#68
 m/p-Xylenes
 Concen: 2.930 ug/l
 RT: 10.305 min Scan# 1512
 Delta R.T. -0.000 min
 Lab File: VX027225.D
 Acq: 28 Feb 2022 17:12

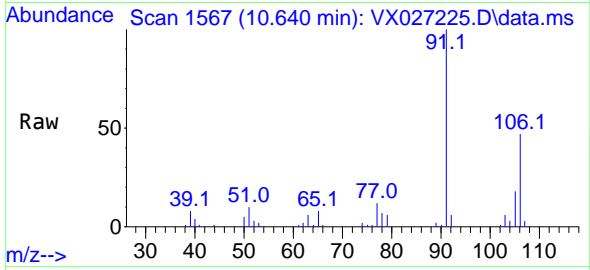
Tgt Ion: 106 Resp: 5661
 Ion Ratio Lower Upper
 106 100
 91 198.2 165.3 247.9



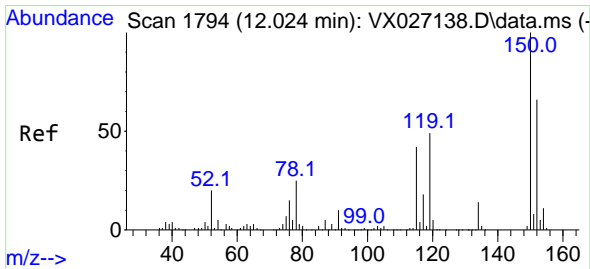
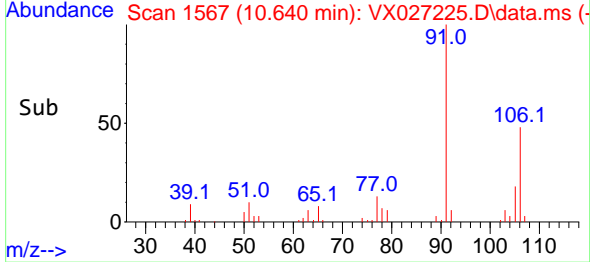
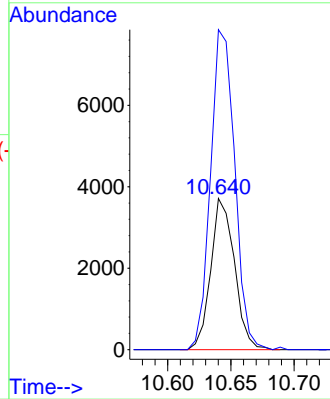


#69
 o-Xylene
 Concen: 2.496 ug/l
 RT: 10.640 min Scan# 11
 Delta R.T. -0.006 min
 Lab File: VX027225.D
 Acq: 28 Feb 2022 17:12

Instrument :
 MSVOA_X
 ClientSampleId :

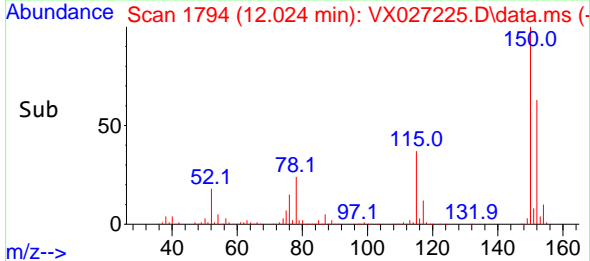
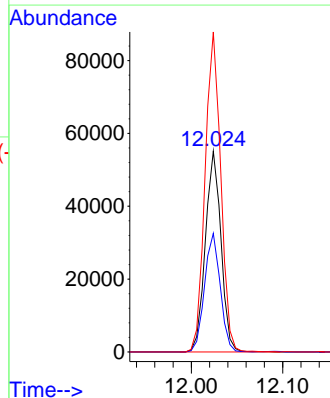
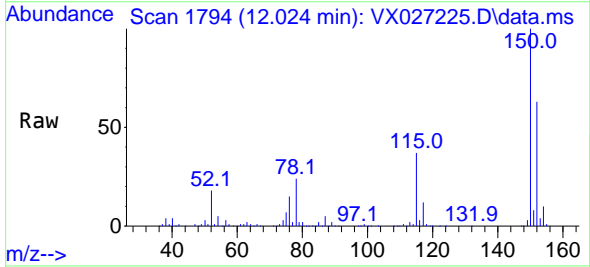


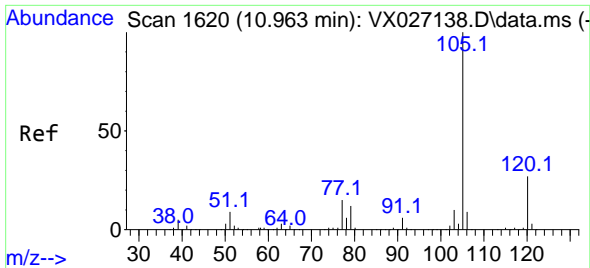
Tgt Ion:106 Resp: 4841
 Ion Ratio Lower Upper
 106 100
 91 216.5 109.7 329.0



#72
 1,4-Dichlorobenzene-d4
 Concen: 50.000 ug/l
 RT: 12.024 min Scan# 1794
 Delta R.T. 0.000 min
 Lab File: VX027225.D
 Acq: 28 Feb 2022 17:12

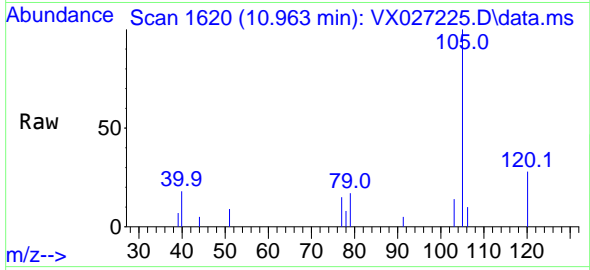
Tgt Ion:152 Resp: 65320
 Ion Ratio Lower Upper
 152 100
 115 59.5 44.2 132.6
 150 159.7 0.0 348.2



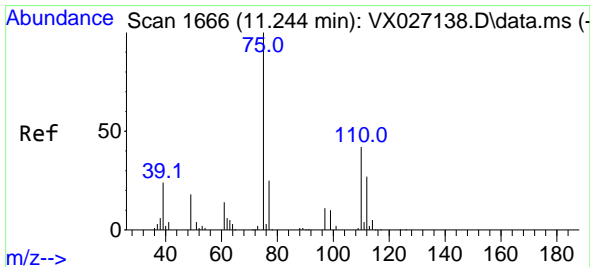
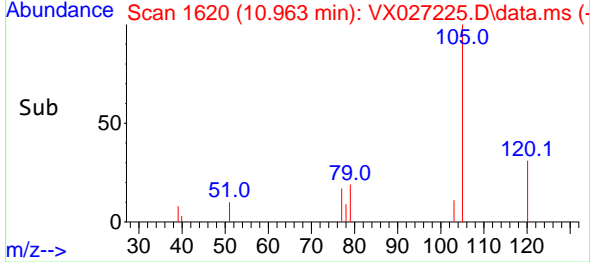
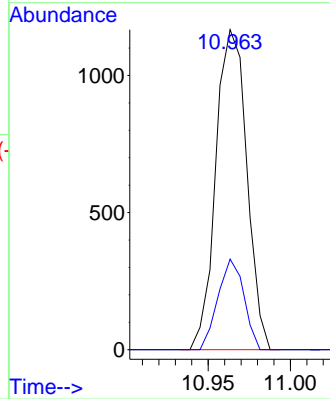


#73
 Isopropylbenzene
 Concen: 0.327 ug/l
 RT: 10.963 min Scan# 1620
 Delta R.T. 0.000 min
 Lab File: VX027225.D
 Acq: 28 Feb 2022 17:12

Instrument : MSVOA_X
 ClientSampleId :

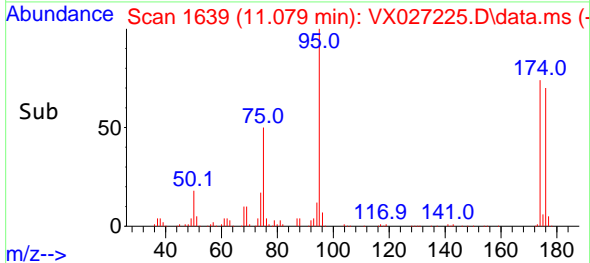
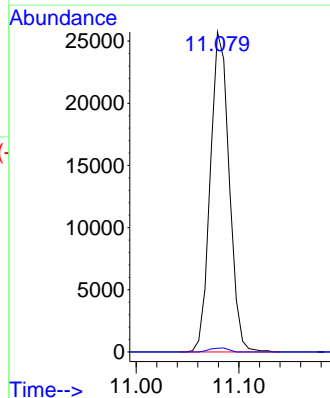
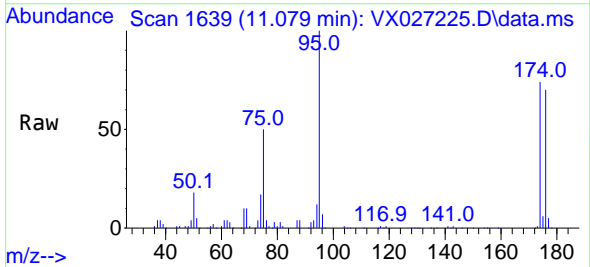


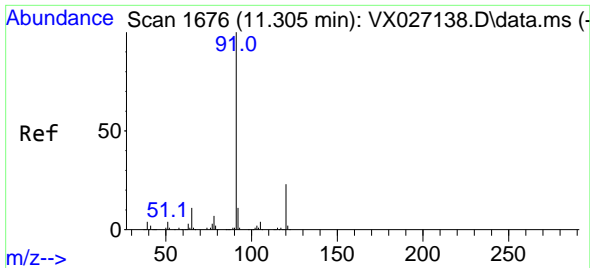
Tgt Ion:105 Resp: 1528
 Ion Ratio Lower Upper
 105 100
 120 23.6 13.1 39.1



#76
 1,2,3-Trichloropropane
 Concen: 25.031 ug/l
 RT: 11.079 min Scan# 1639
 Delta R.T. -0.165 min
 Lab File: VX027225.D
 Acq: 28 Feb 2022 17:12

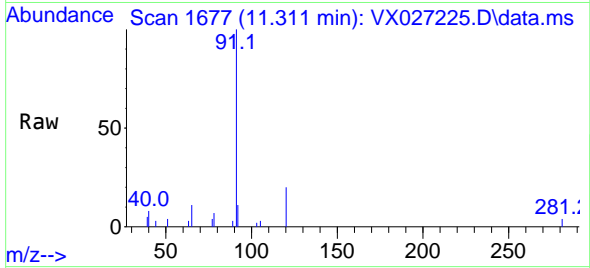
Tgt Ion: 75 Resp: 32933
 Ion Ratio Lower Upper
 75 100
 77 1.2 18.3 54.8#



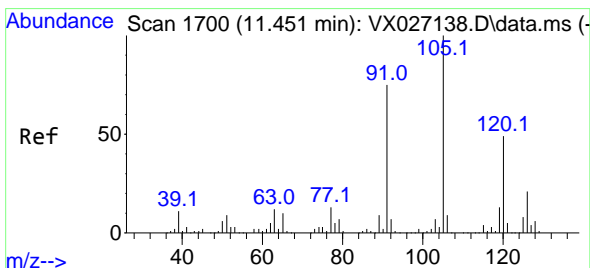
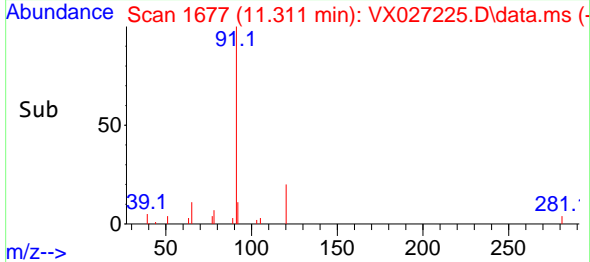
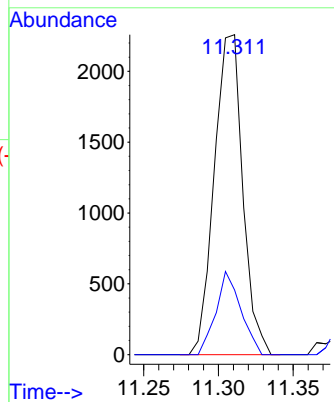


#78
 n-propylbenzene
 Concen: 0.563 ug/l
 RT: 11.311 min Scan# 1692
 Delta R.T. 0.006 min
 Lab File: VX027225.D
 Acq: 28 Feb 2022 17:12

Instrument :
 MSVOA_X
 ClientSampleId :

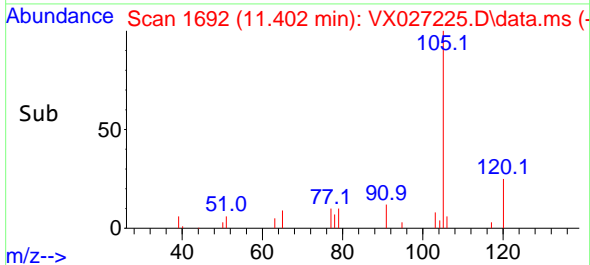
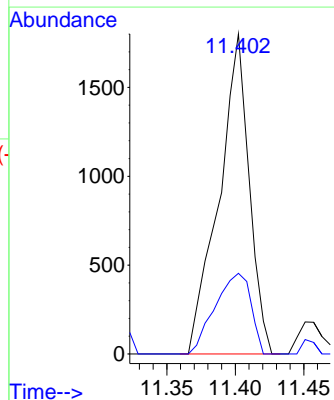
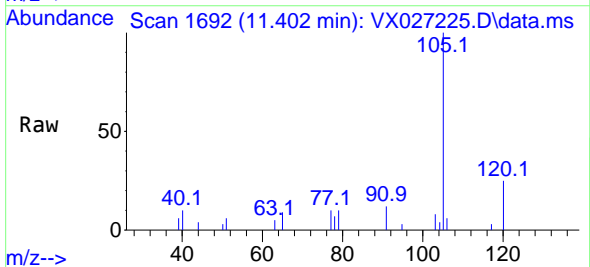


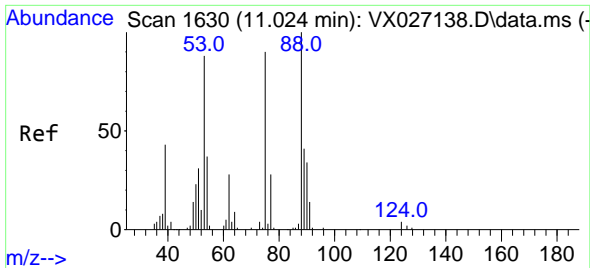
Tgt Ion: 91 Resp: 2992
 Ion Ratio Lower Upper
 91 100
 120 22.7 11.6 34.7



#80
 1,3,5-Trimethylbenzene
 Concen: 0.704 ug/l
 RT: 11.402 min Scan# 1692
 Delta R.T. -0.049 min
 Lab File: VX027225.D
 Acq: 28 Feb 2022 17:12

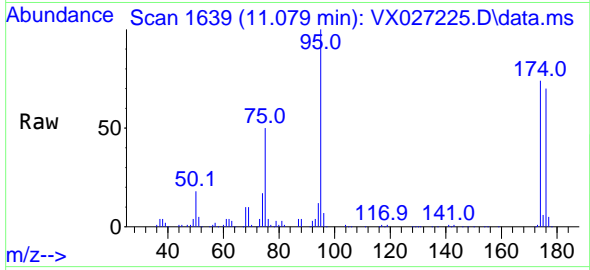
Tgt Ion: 105 Resp: 2765
 Ion Ratio Lower Upper
 105 100
 120 29.8 24.0 72.0



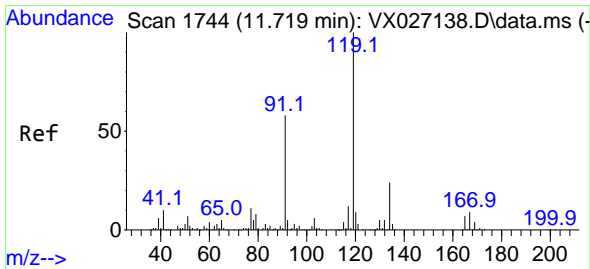
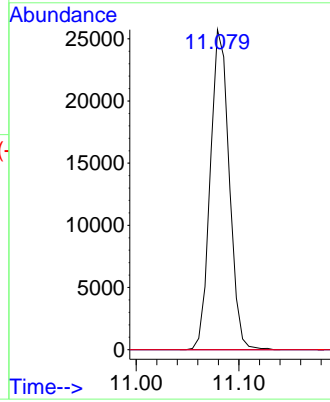
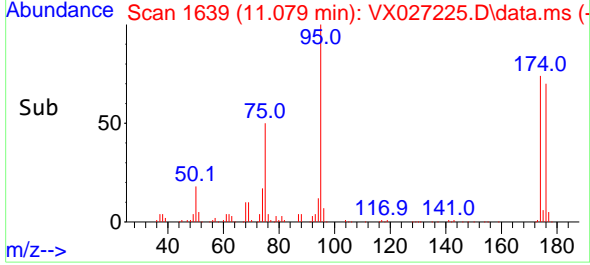


#81
 trans-1,4-Dichloro-2-butene
 Concen: 70.885 ug/l
 RT: 11.079 min Scan# 1750
 Delta R.T. 0.055 min
 Lab File: VX027225.D
 Acq: 28 Feb 2022 17:12

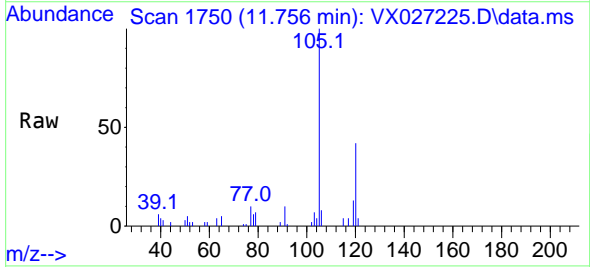
Instrument :
 MSVOA_X
 ClientSampleId :



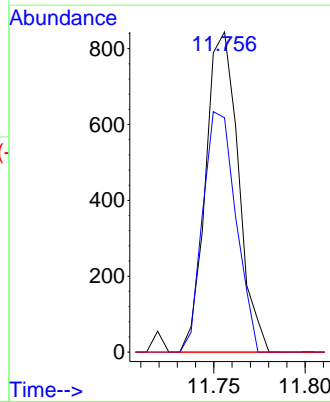
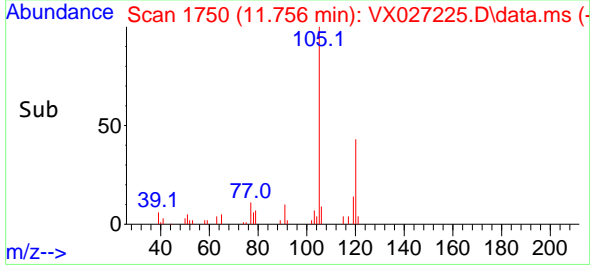
Tgt Ion: 75 Resp: 32933
 Ion Ratio Lower Upper
 75 100
 53 0.0 94.0 141.0#
 89 0.0 37.0 55.4#

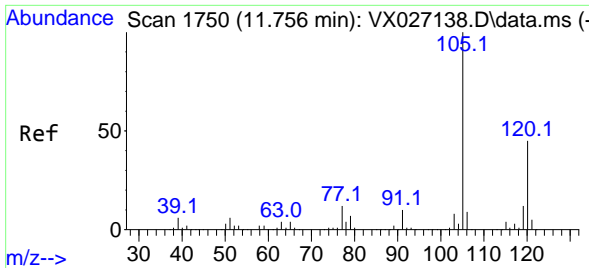


#83
 tert-Butylbenzene
 Concen: 0.275 ug/l
 RT: 11.756 min Scan# 1750
 Delta R.T. 0.037 min
 Lab File: VX027225.D
 Acq: 28 Feb 2022 17:12



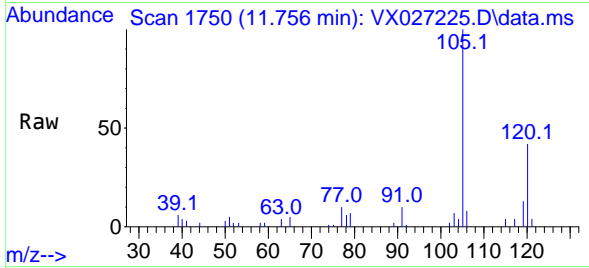
Tgt Ion: 119 Resp: 1051
 Ion Ratio Lower Upper
 119 100
 91 76.0 31.4 94.0
 134 0.0 11.8 35.3#



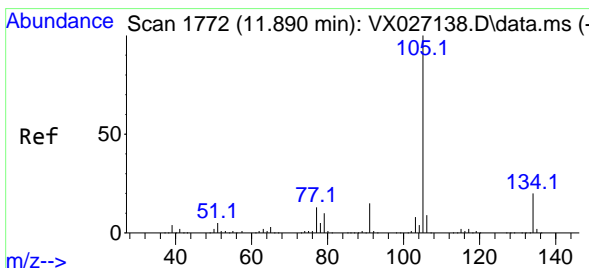
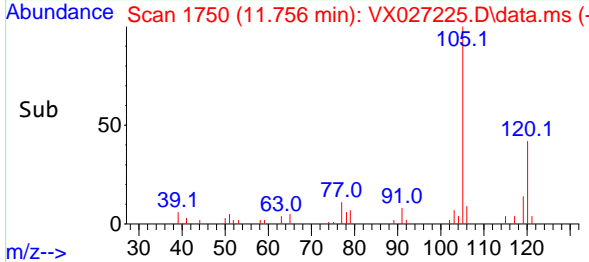
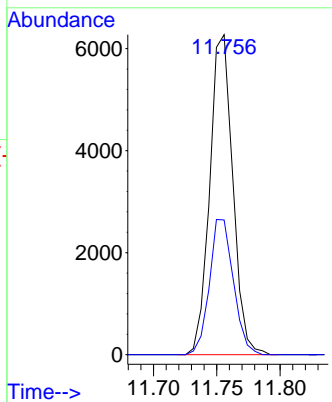


#84
 1,2,4-Trimethylbenzene
 Concen: 2.032 ug/l
 RT: 11.756 min Scan# 1750
 Delta R.T. -0.000 min
 Lab File: VX027225.D
 Acq: 28 Feb 2022 17:12

Instrument : MSVOA_X
 ClientSampleId :

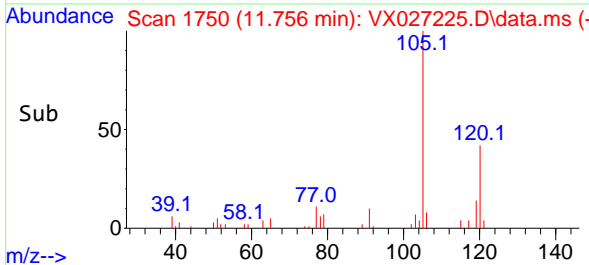
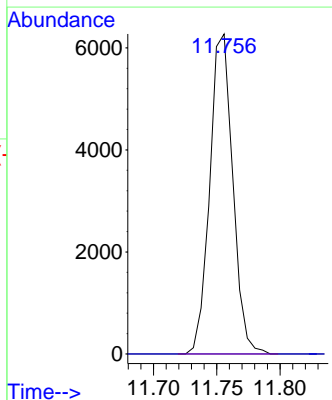
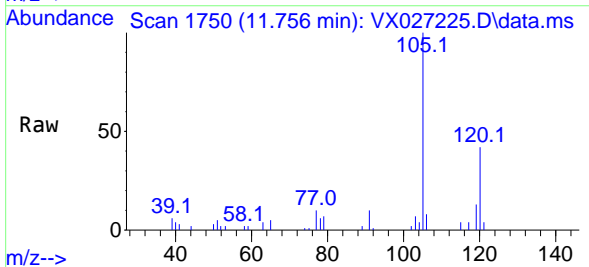


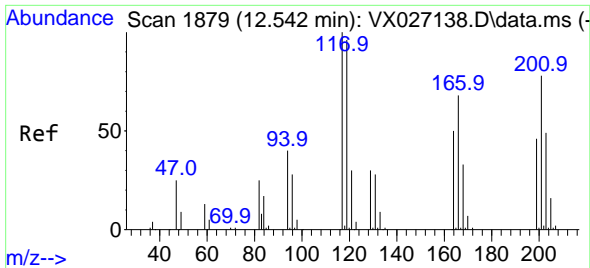
Tgt Ion:105 Resp: 7945
 Ion Ratio Lower Upper
 105 100
 120 44.1 21.9 65.5



#85
 sec-Butylbenzene
 Concen: 1.658 ug/l
 RT: 11.756 min Scan# 1750
 Delta R.T. -0.134 min
 Lab File: VX027225.D
 Acq: 28 Feb 2022 17:12

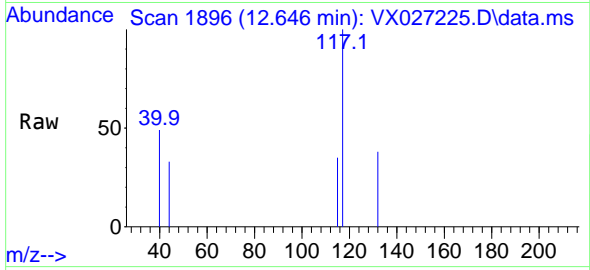
Tgt Ion:105 Resp: 7945
 Ion Ratio Lower Upper
 105 100
 134 0.0 10.1 30.1#



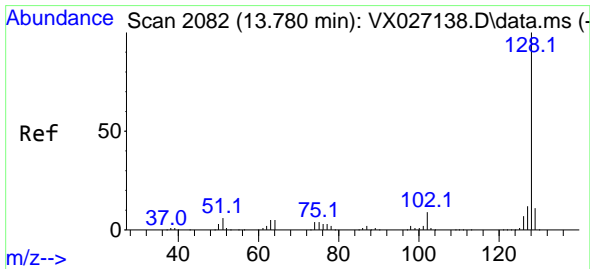
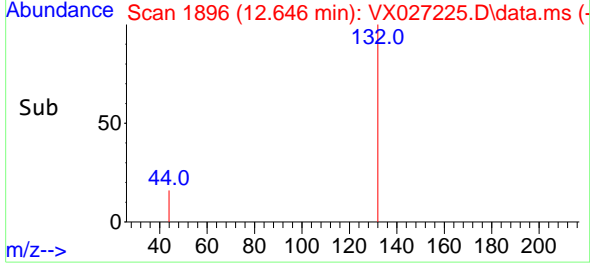
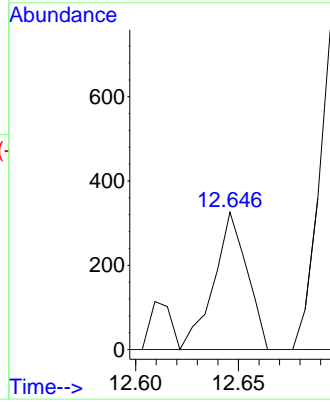


#90
 Hexachloroethane
 Concen: 0.578 ug/l
 RT: 12.646 min Scan# 117
 Delta R.T. 0.104 min
 Lab File: VX027225.D
 Acq: 28 Feb 2022 17:12

Instrument : MSVOA_X
 ClientSampleId :



Tgt Ion:117 Resp: 366
 Ion Ratio Lower Upper
 117 100
 201 0.0 35.6 106.8#



#95
 Naphthalene
 Concen: 0.834 ug/l
 RT: 13.780 min Scan# 2082
 Delta R.T. -0.000 min
 Lab File: VX027225.D
 Acq: 28 Feb 2022 17:12

Tgt Ion:128 Resp: 3829
 Ion Ratio Lower Upper
 128 100
 127 13.1 10.3 15.5
 129 12.2 8.7 13.1

