

Data Path : Z:\voasrv\HPCHEM1\MSVOA\_X\Data\VX022825\  
 Data File : VX045086.D  
 Acq On : 28 Feb 2025 14:10  
 Operator : JC/MD  
 Sample : Q1403-01  
 Misc : 5.0mL/MSVOA\_X/WATER  
 ALS Vial : 11 Sample Multiplier: 1

Instrument :  
 MSVOA\_X  
 ClientSampleId :  
 Storage-Blank-SOIL-REF-6

Integration Parameters: RTEINT.P

Integrator: RTE  
 Smoothing : ON Filtering: 5  
 Sampling : 1 Min Area: 3 % of largest Peak  
 Start Thrs: 0.2 Max Peaks: 100  
 Stop Thrs : 0 Peak Location: TOP

If leading or trailing edge < 100 prefer < Baseline drop else tangent >  
 Peak separation: 5

Method : Z:\voasrv\HPCHEM1\MSVOA\_X\Method\82X022825W.M  
 Title : SW846 8260

Signal : TIC: VX045086.D\data.ms

peak #	R.T. min	first scan	max scan	last scan	PK TY	peak height	corr. area	corr. % max.	% of total
1	1.240	21	25	32	rBV2	8119	13905	2.84%	0.557%
2	1.563	70	78	79	rBV5	4191	9086	1.86%	0.364%
3	5.379	693	704	721	rBV	56837	167614	34.26%	6.717%
4	5.550	721	732	749	rVV2	75366	222844	45.55%	8.931%
5	5.952	789	798	813	rBV2	64700	173823	35.53%	6.966%
6	6.757	921	930	945	rBV	143528	347093	70.95%	13.910%
7	8.647	1234	1240	1261	rBV	300909	489238	100.00%	19.607%
8	10.049	1465	1470	1483	rBV	304055	430982	88.09%	17.272%
9	11.079	1634	1639	1649	rBV	238931	299230	61.16%	11.992%
10	12.018	1788	1793	1805	rBV	263244	341383	69.78%	13.682%

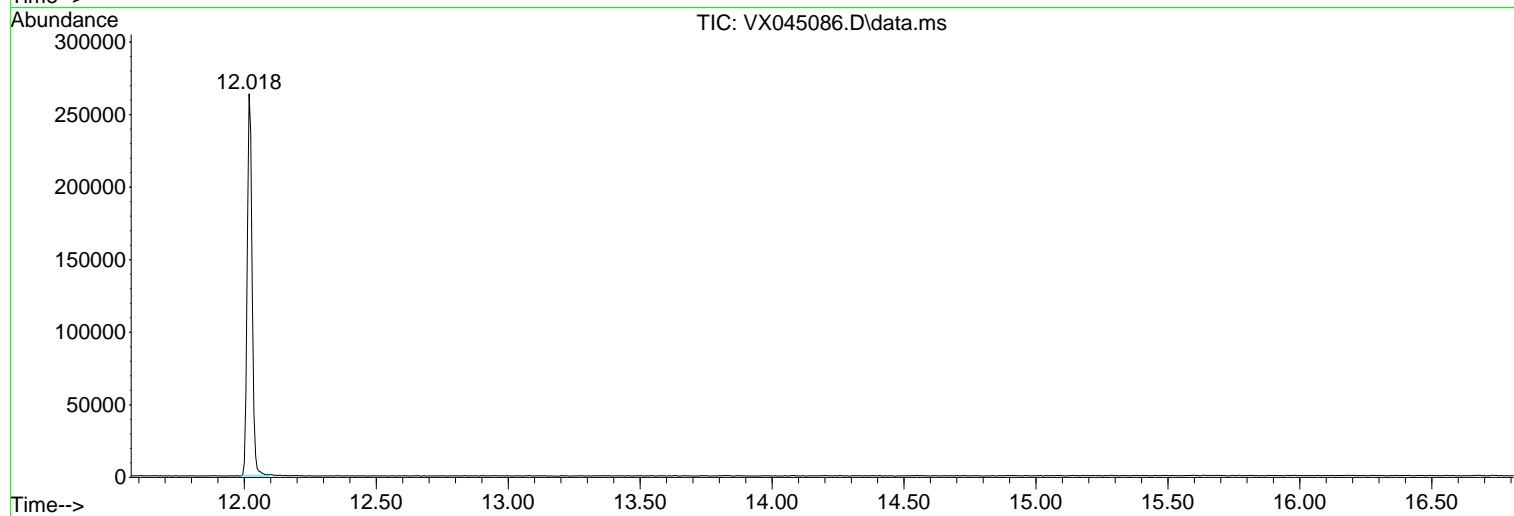
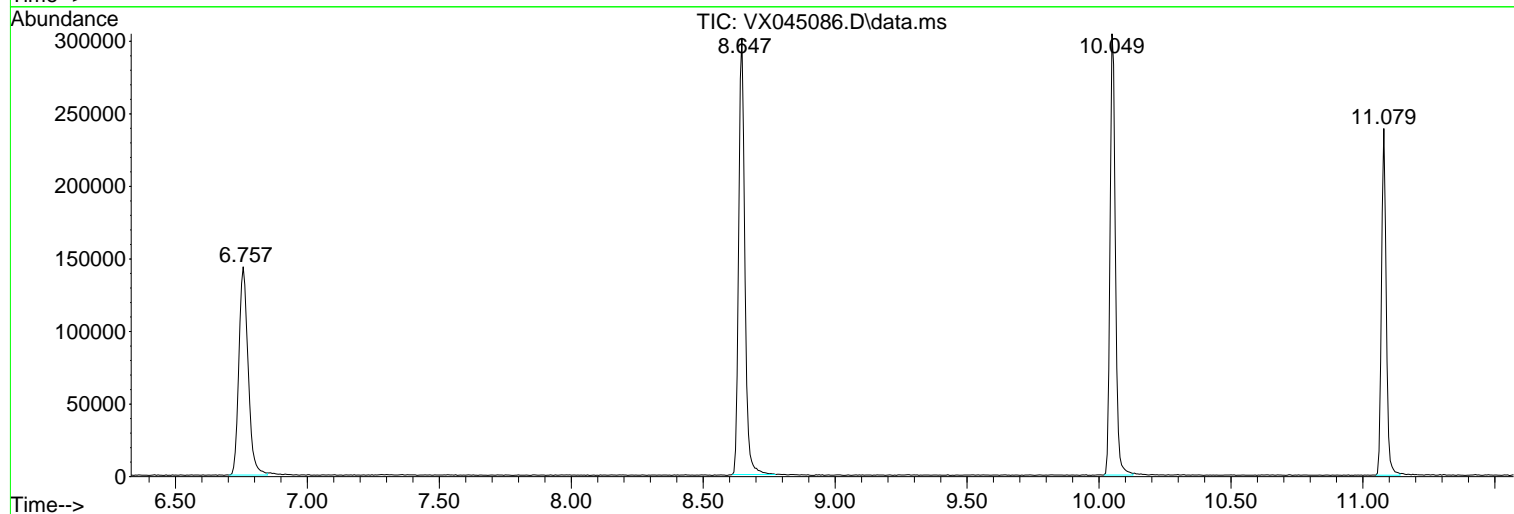
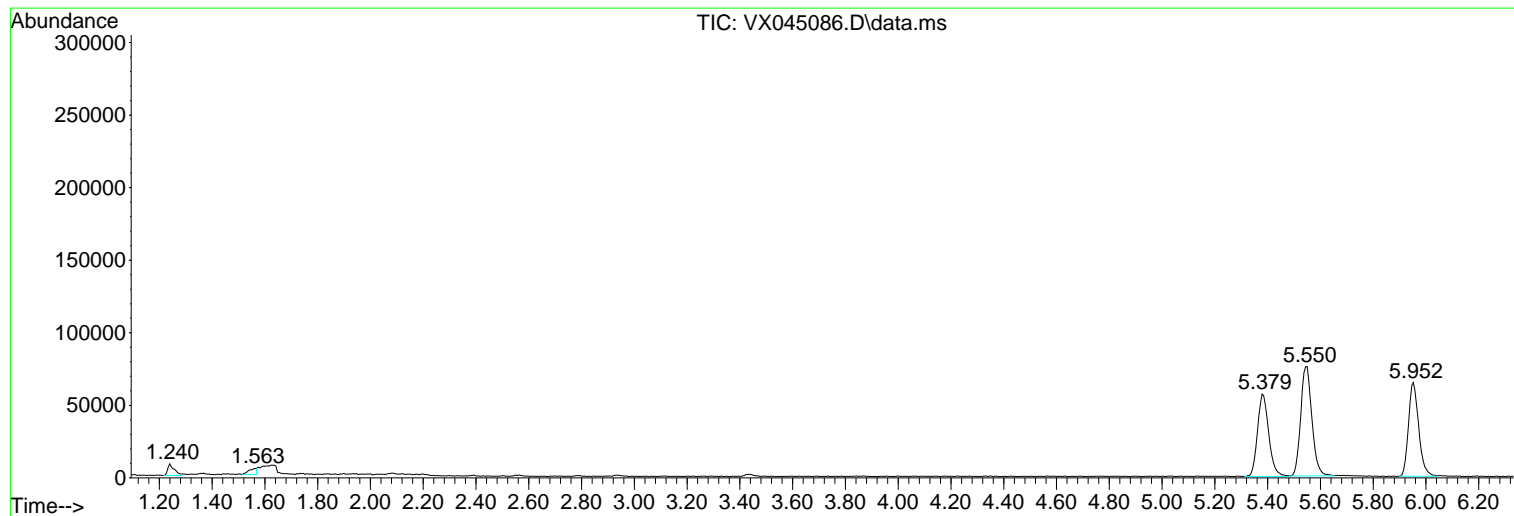
Sum of corrected areas: 2495198

Data Path : Z:\voasrv\HPCHEM1\MSVOA\_X\Data\VX022825\  
Data File : VX045086.D  
Acq On : 28 Feb 2025 14:10  
Operator : JC/MD  
Sample : Q1403-01  
Misc : 5.0mL/MSVOA\_X/WATER  
ALS Vial : 11 Sample Multiplier: 1

Instrument :  
MSVOA\_X  
ClientSampleId :  
Storage-Blank-SOIL-REF-6

Quant Method : Z:\voasrv\HPCHEM1\MSVOA\_X\Method\82X022825W.M  
Quant Title : SW846 8260

TIC Library : C:\Database\NIST0.L  
TIC Integration Parameters: LSCINT.P



Library Search Compound Report

Data Path : Z:\voasrv\HPCHEM1\MSVOA\_X\Data\VX022825\  
Data File : VX045086.D  
Acq On : 28 Feb 2025 14:10  
Operator : JC/MD  
Sample : Q1403-01  
Misc : 5.0mL/MSVOA\_X/WATER  
ALS Vial : 11 Sample Multiplier: 1

Instrument :  
MSVOA\_X  
ClientSampleId :  
Storage-Blank-SOIL-REF-6

Quant Method : Z:\voasrv\HPCHEM1\MSVOA\_X\Method\82X022825W.M  
Quant Title : SW846 8260

TIC Library : C:\Database\NIST20.L  
TIC Integration Parameters: LSCINT.P

No Library Search Compounds Detected

\*\*\*\*\*

Data Path : Z:\voasrv\HPCHEM1\MSVOA\_X\Data\VX022825\  
Data File : VX045086.D  
Acq On : 28 Feb 2025 14:10  
Operator : JC/MD  
Sample : Q1403-01  
Misc : 5.0mL/MSVOA\_X/WATER  
ALS Vial : 11 Sample Multiplier: 1

**Instrument :**  
MSVOA\_X  
**ClientSampleId :**  
Storage-Blank-SOIL-REF-6

Quant Method : Z:\voasrv\HPCHEM1\MSVOA\_X\Method\82X022825W.M  
Quant Title : SW846 8260

TIC Library : C:\Database\NIST20.L  
TIC Integration Parameters: LSCINT.P

TIC Top Hit name	RT	EstConc	Units	Response	--Internal Standard--			
					#	RT	Resp	Conc

---