

Data Path : Z:\voasrv\HPCHEM1\MSVOA_X\Data\VX030122\
 Data File : VX027254.D
 Acq On : 01 Mar 2022 17:27
 Operator : JC/MD
 Sample : N1688-19
 Misc : 5.0mL/MSVOA_X/WATER
 ALS Vial : 18 Sample Multiplier: 1

Instrument :
 MSVOA_X
 ClientSampleId :
 MW-36

Integration Parameters: RTEINT.P

Integrator: RTE
 Smoothing : ON Filtering: 5
 Sampling : 1 Min Area: 3 % of largest Peak
 Start Thrs: 0.2 Max Peaks: 100
 Stop Thrs : 0 Peak Location: TOP

If leading or trailing edge < 100 prefer < Baseline drop else tangent >
 Peak separation: 5

Method : Z:\voasrv\HPCHEM1\MSVOA_X\Method\82X022322W.M
 Title : SW846 8260

Signal : TIC: VX027254.D\data.ms

peak #	R.T. min	first scan	max scan	last scan	PK TY	peak height	corr. area	corr. % max.	% of total
1	1.246	22	26	43	rBV	42112	72814	17.64%	3.172%
2	5.391	694	706	720	rBV	48619	142009	34.41%	6.186%
3	5.556	723	733	747	rVV	83622	233914	56.68%	10.189%
4	5.964	788	800	813	rBV	51411	137496	33.32%	5.989%
5	6.769	921	932	944	rBV	130300	307087	74.41%	13.376%
6	8.653	1234	1241	1253	rBV	261133	412678	100.00%	17.976%
7	10.055	1465	1471	1483	rBV	289349	370343	89.74%	16.132%
8	11.085	1634	1640	1649	rBV	210785	275143	66.67%	11.985%
9	12.024	1789	1794	1804	rBV	283552	344281	83.43%	14.996%

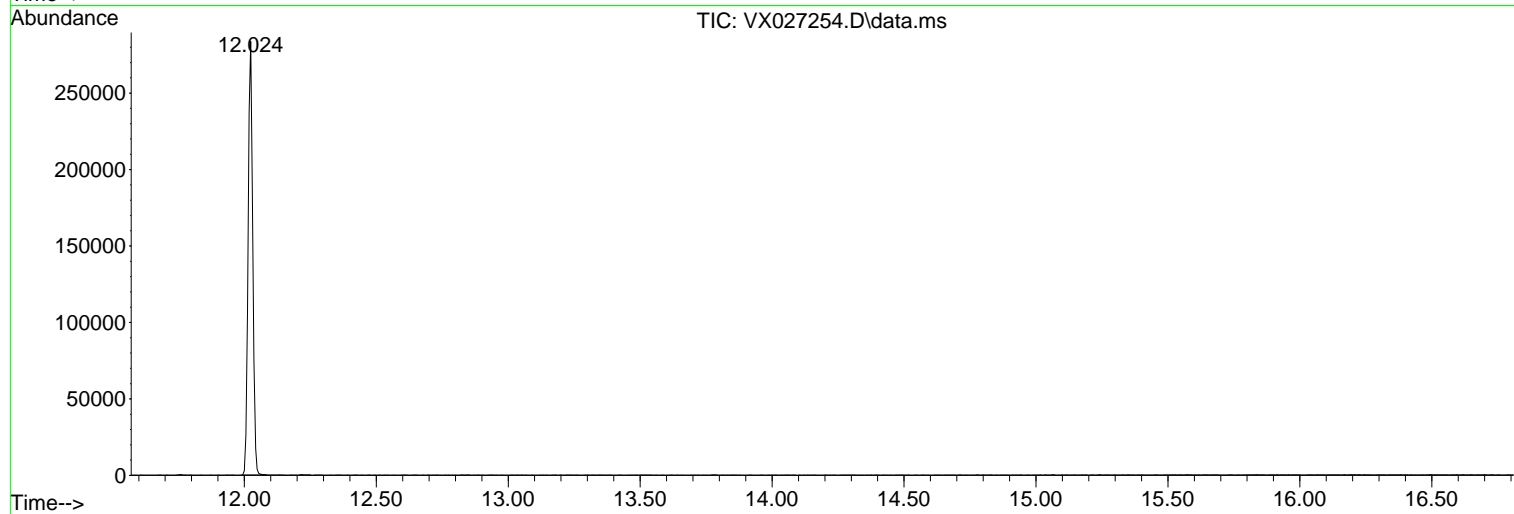
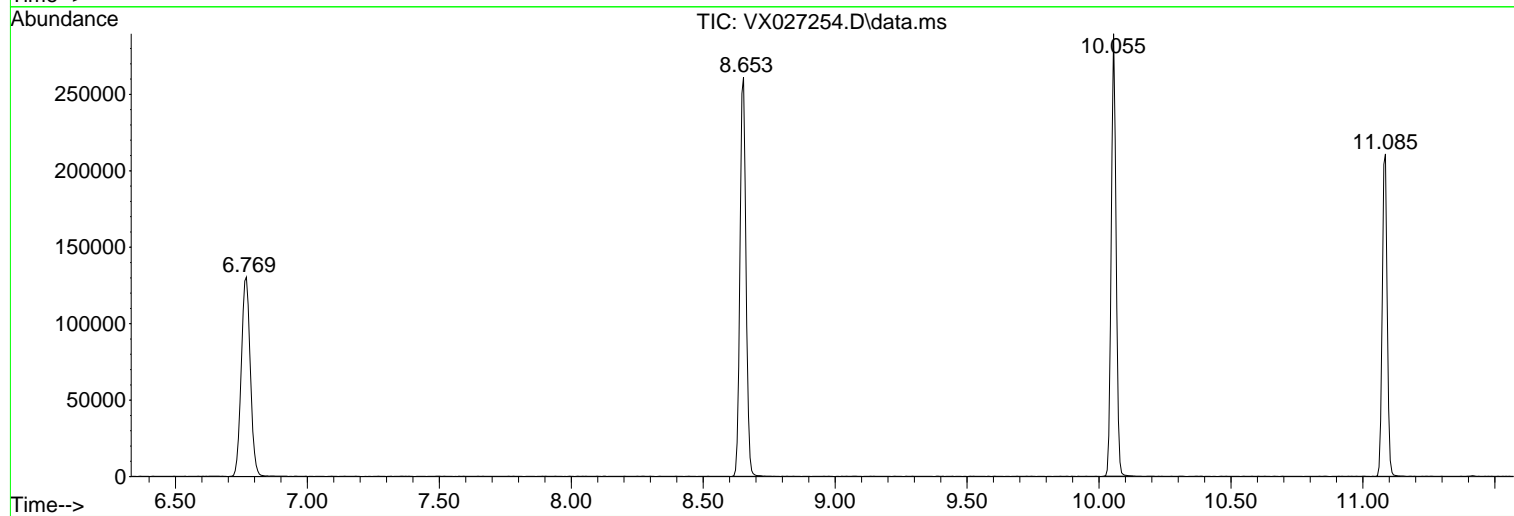
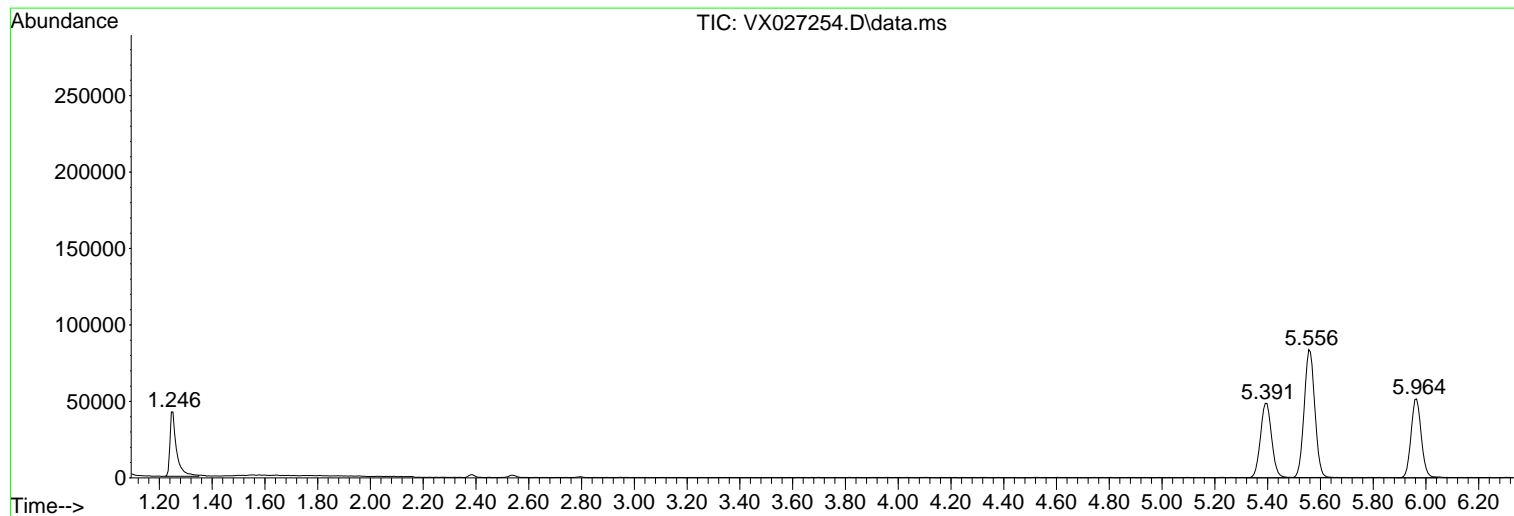
Sum of corrected areas: 2295765

Data Path : Z:\voasrv\HPCHEM1\MSVOA_X\Data\VX030122\
Data File : VX027254.D
Acq On : 01 Mar 2022 17:27
Operator : JC/MD
Sample : N1688-19
Misc : 5.0mL/MSVOA_X/WATER
ALS Vial : 18 Sample Multiplier: 1

Instrument :
MSVOA_X
ClientSampleId :
MW-36

Quant Method : Z:\voasrv\HPCHEM1\MSVOA_X\Method\82X022322W.M
Quant Title : SW846 8260

TIC Library : C:\Database\NIST20.L
TIC Integration Parameters: LSCINT.P



Data Path : Z:\voasrv\HPCHEM1\MSVOA_X\Data\VX030122\
 Data File : VX027254.D
 Acq On : 01 Mar 2022 17:27
 Operator : JC/MD
 Sample : N1688-19
 Misc : 5.0mL/MSVOA_X/WATER
 ALS Vial : 18 Sample Multiplier: 1

Instrument :
 MSVOA_X
 ClientSampleId :
 MW-36

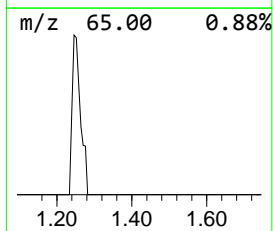
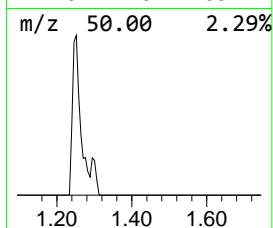
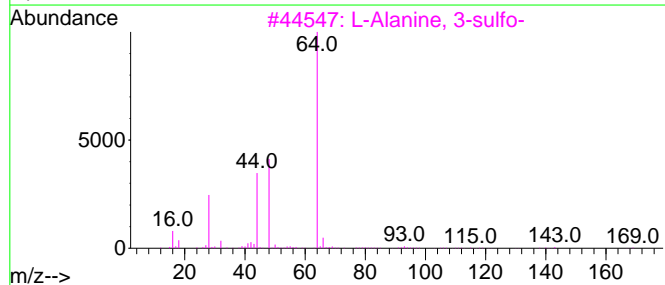
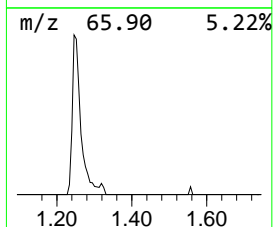
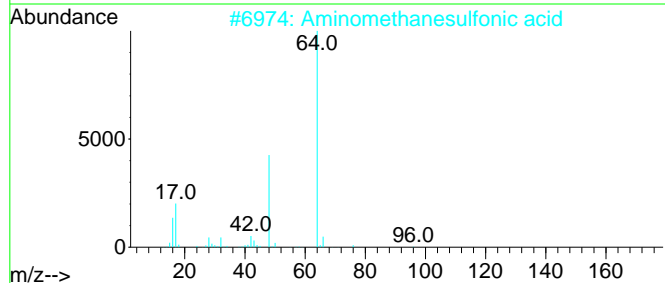
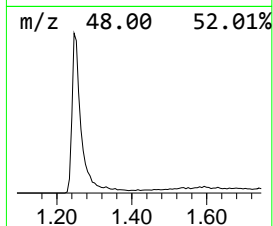
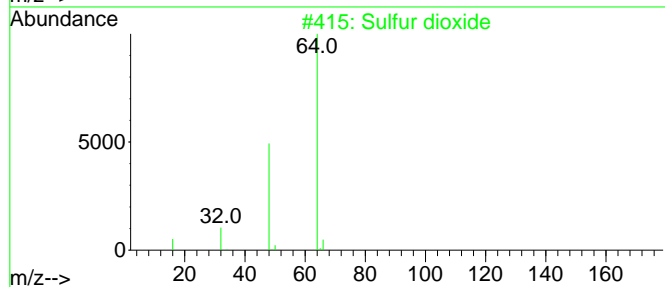
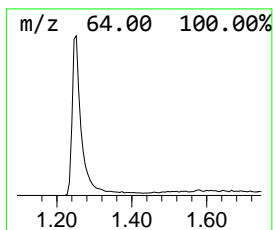
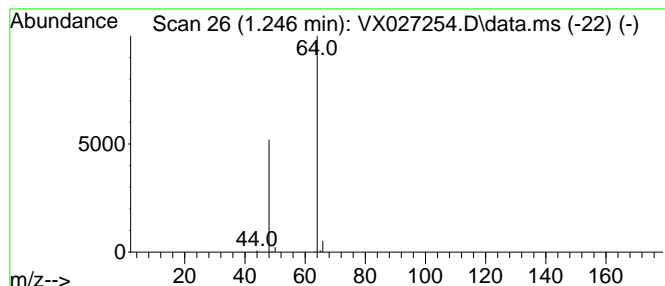
Quant Method : Z:\voasrv\HPCHEM1\MSVOA_X\Method\82X022322W.M
 Quant Title : SW846 8260

TIC Library : C:\Database\NIST20.L
 TIC Integration Parameters: LSCINT.P

 Peak Number 1 Sulfur dioxide Concentration Rank 1

R.T.	EstConc	Area	Relative to ISTD	R.T.
1.246	15.56 ug/l	72814	Pentafluorobenzene	5.556

Hit#	of	5	Tentative ID	MW	MolForm	CAS#	Qual
1			Sulfur dioxide	64	O2S	007446-09-5	83
2			Aminomethanesulfonic acid	111	CH5NO3S	013881-91-9	74
3			L-Alanine, 3-sulfo-	169	C3H7NO5S	000498-40-8	9
4			Ethene, 1,1-difluoro-	64	C2H2F2	000075-38-7	4
5			Ethyl Chloride	64	C2H5Cl	000075-00-3	3



Data Path : Z:\voasrv\HPCHEM1\MSVOA_X\Data\VX030122\
Data File : VX027254.D
Acq On : 01 Mar 2022 17:27
Operator : JC/MD
Sample : N1688-19
Misc : 5.0mL/MSVOA_X/WATER
ALS Vial : 18 Sample Multiplier: 1

Instrument :
MSVOA_X
ClientSampleId :
MW-36

Quant Method : Z:\voasrv\HPCHEM1\MSVOA_X\Method\82X022322W.M
Quant Title : SW846 8260

TIC Library : C:\Database\NIST0.L
TIC Integration Parameters: LSCINT.P

TIC Top Hit name	RT	EstConc	Units	Response	--Internal Standard--			
					#	RT	Resp	Conc
Sulfur dioxide	1.246	15.6	ug/l	72814	1	5.556	233914	50.0