

Data Path : Z:\voasrv\HPCHEM1\MSVOA\_X\Data\VX030222\  
 Data File : VX027268.D  
 Acq On : 02 Mar 2022 17:27  
 Operator : JC/MD  
 Sample : PB143060TB  
 Misc : 5.0mL/MSVOA\_X/WATER  
 ALS Vial : 7 Sample Multiplier: 1

Instrument :  
 MSVOA\_X  
 ClientSampleId :  
 PB143060TB

Quant Time: Mar 03 00:07:03 2022  
 Quant Method : Z:\voasrv\HPCHEM1\MSVOA\_X\Method\82X022322W.M  
 Quant Title : SW846 8260  
 QLast Update : Wed Feb 23 13:06:57 2022  
 Response via : Initial Calibration

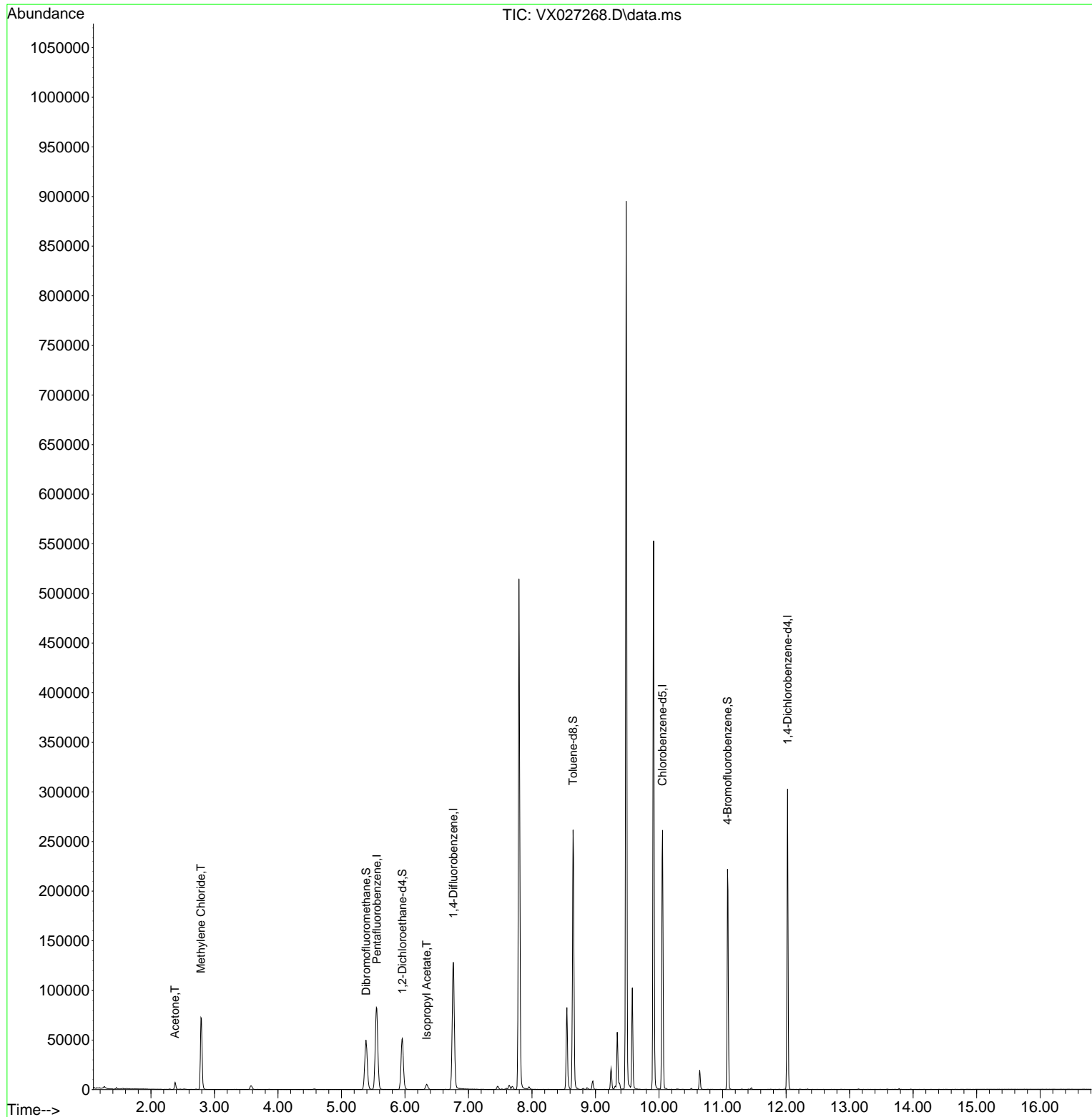
Compound	R.T.	QIon	Response	Conc	Units	Dev(Min)
-----						
Internal Standards						
1) Pentafluorobenzene	5.556	168	82394	50.000	ug/l	0.00
34) 1,4-Difluorobenzene	6.763	114	136227	50.000	ug/l	0.00
63) Chlorobenzene-d5	10.055	117	123344	50.000	ug/l	0.00
72) 1,4-Dichlorobenzene-d4	12.024	152	60387	50.000	ug/l	0.00
System Monitoring Compounds						
33) 1,2-Dichloroethane-d4	5.958	65	49730	50.255	ug/l	0.00
Spiked Amount	50.000	Range	78 - 117	Recovery	=	100.500%
35) Dibromofluoromethane	5.385	113	43363	51.282	ug/l	0.00
Spiked Amount	50.000	Range	75 - 124	Recovery	=	102.560%
50) Toluene-d8	8.647	98	157373	49.774	ug/l	0.00
Spiked Amount	50.000	Range	92 - 112	Recovery	=	99.540%
62) 4-Bromofluorobenzene	11.079	95	59011	48.623	ug/l	0.00
Spiked Amount	50.000	Range	83 - 123	Recovery	=	97.240%
Target Compounds						
						Qvalue
16) Acetone	2.380	43	7249	16.685	ug/l #	88
20) Methylene Chloride	2.788	84	33980	37.734	ug/l	92
43) Isopropyl Acetate	6.342	43	7099	3.406	ug/l	99
-----						

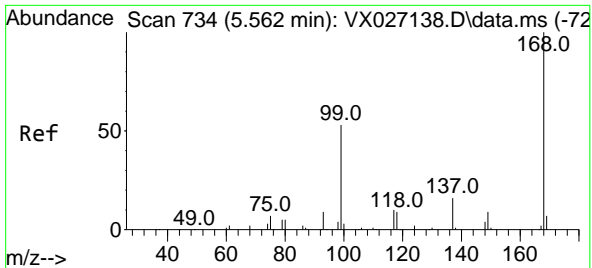
(#) = qualifier out of range (m) = manual integration (+) = signals summed

Data Path : Z:\voasrv\HPCHEM1\MSVOA\_X\Data\VX030222\  
 Data File : VX027268.D  
 Acq On : 02 Mar 2022 17:27  
 Operator : JC/MD  
 Sample : PB143060TB  
 Misc : 5.0mL/MSVOA\_X/WATER  
 ALS Vial : 7 Sample Multiplier: 1

Instrument :  
 MSVOA\_X  
 ClientSampleId :  
 PB143060TB

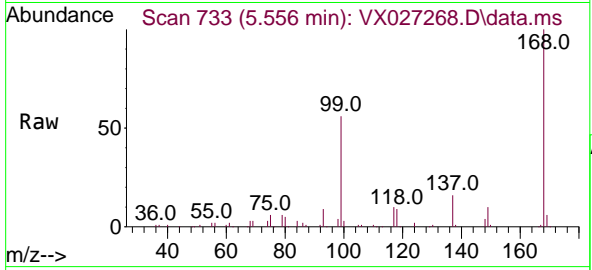
Quant Time: Mar 03 00:07:03 2022  
 Quant Method : Z:\voasrv\HPCHEM1\MSVOA\_X\Method\82X022322W.M  
 Quant Title : SW846 8260  
 QLast Update : Wed Feb 23 13:06:57 2022  
 Response via : Initial Calibration



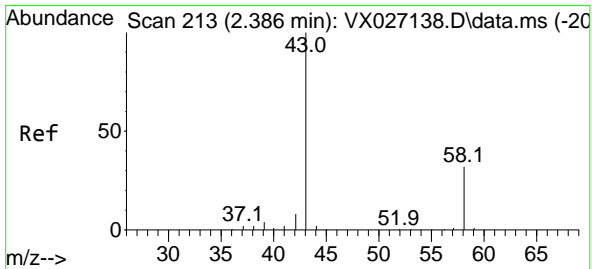
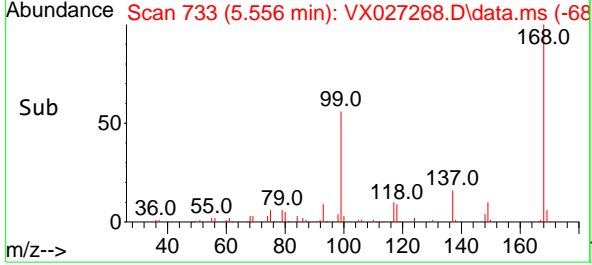
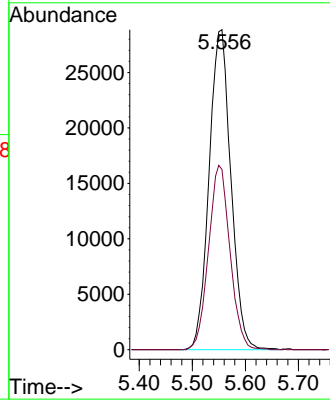


#1  
 Pentafluorobenzene  
 Concen: 50.000 ug/l  
 RT: 5.556 min Scan# 71  
 Delta R.T. -0.006 min  
 Lab File: VX027268.D  
 Acq: 02 Mar 2022 17:27

Instrument : MSVOA\_X  
 ClientSampleId : PB143060TB

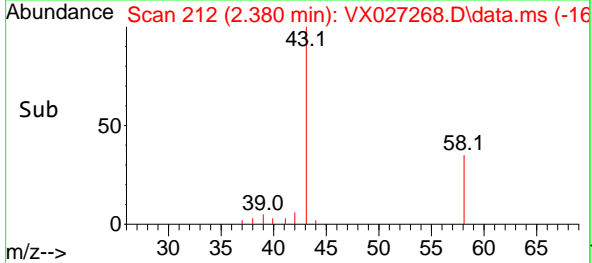
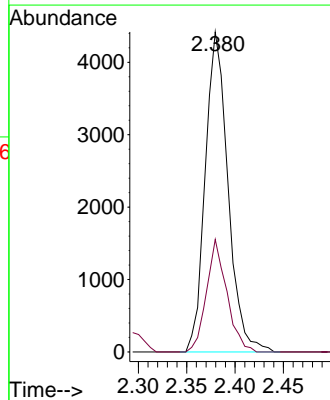
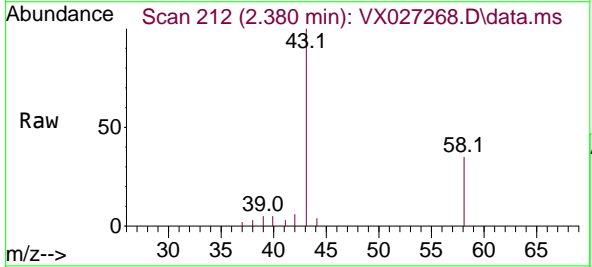


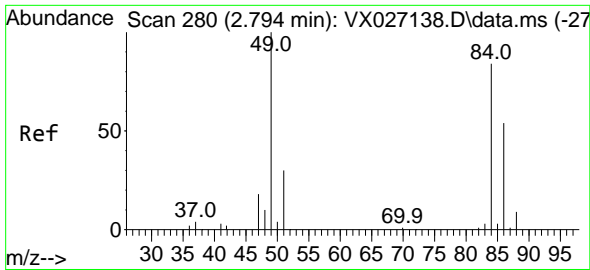
Tgt Ion:168 Resp: 82394  
 Ion Ratio Lower Upper  
 168 100  
 99 56.4 50.3 75.5



#16  
 Acetone  
 Concen: 16.685 ug/l  
 RT: 2.380 min Scan# 212  
 Delta R.T. -0.006 min  
 Lab File: VX027268.D  
 Acq: 02 Mar 2022 17:27

Tgt Ion: 43 Resp: 7249  
 Ion Ratio Lower Upper  
 43 100  
 58 35.1 23.0 34.6#



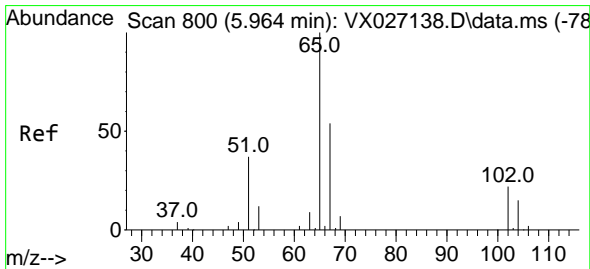
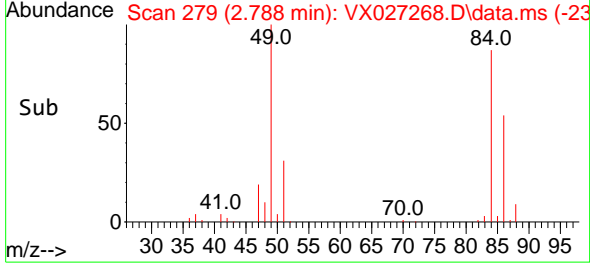
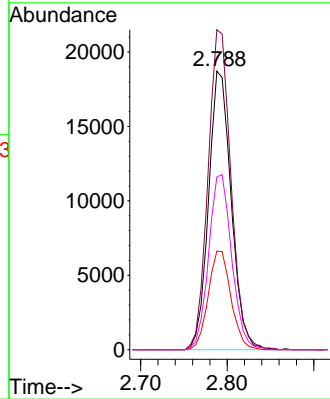
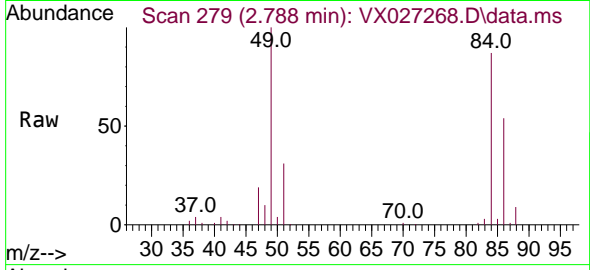


#20  
 Methylene Chloride  
 Concen: 37.734 ug/l  
 RT: 2.788 min Scan# 21  
 Delta R.T. -0.006 min  
 Lab File: VX027268.D  
 Acq: 02 Mar 2022 17:27

Instrument :  
 MSVOA\_X  
 ClientSampleId :  
 PB143060TB

Tgt Ion: 84 Resp: 33980

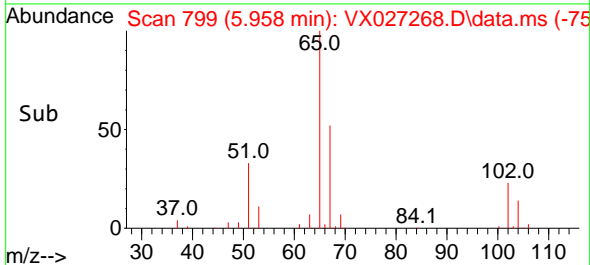
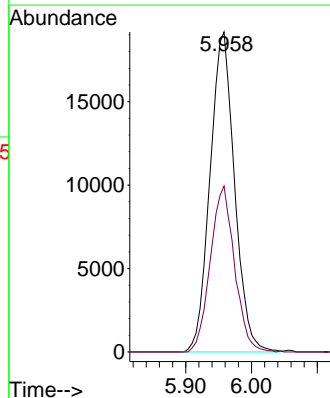
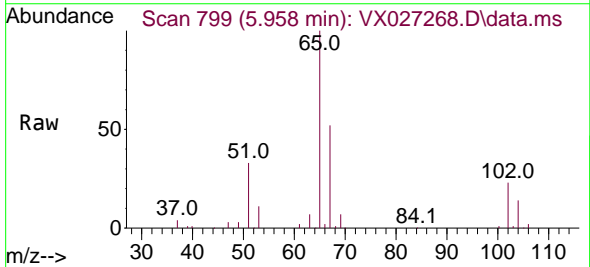
Ion	Ratio	Lower	Upper
84	100		
49	114.9	101.5	152.3
51	35.4	31.2	46.8
86	61.9	51.3	76.9

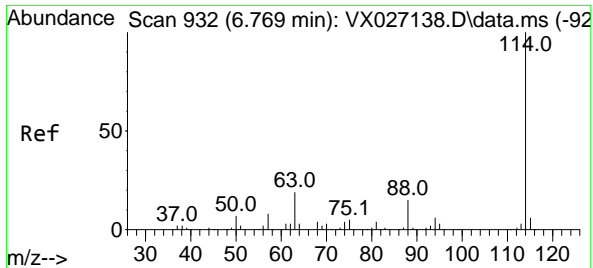


#33  
 1,2-Dichloroethane-d4  
 Concen: 50.255 ug/l  
 RT: 5.958 min Scan# 799  
 Delta R.T. -0.006 min  
 Lab File: VX027268.D  
 Acq: 02 Mar 2022 17:27

Tgt Ion: 65 Resp: 49730

Ion	Ratio	Lower	Upper
65	100		
67	51.2	0.0	100.8



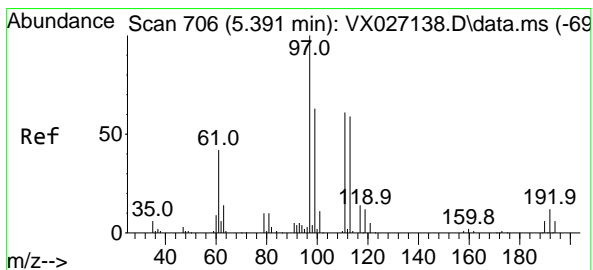
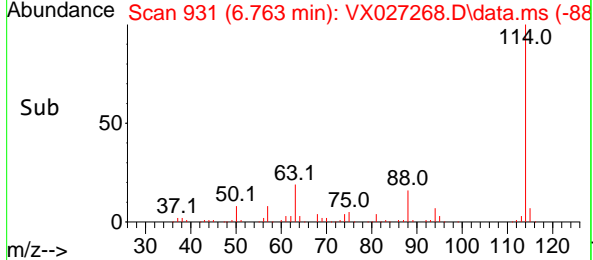
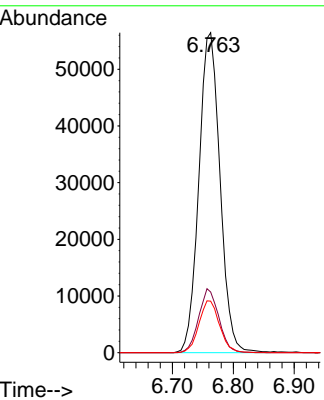
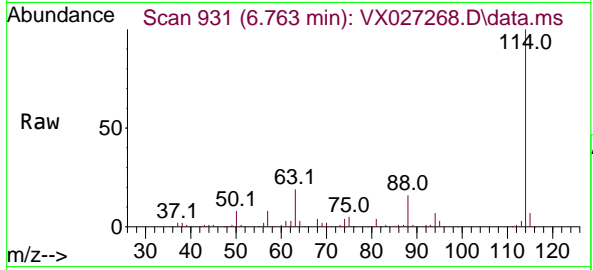


#34  
 1,4-Difluorobenzene  
 Concen: 50.000 ug/l  
 RT: 6.763 min Scan# 91  
 Delta R.T. -0.006 min  
 Lab File: VX027268.D  
 Acq: 02 Mar 2022 17:27

Instrument : MSVOA\_X  
 ClientSampleId : PB143060TB

Tgt Ion:114 Resp: 136227

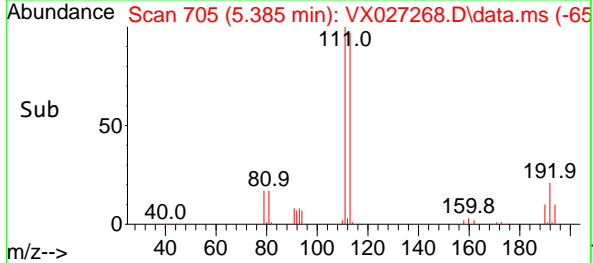
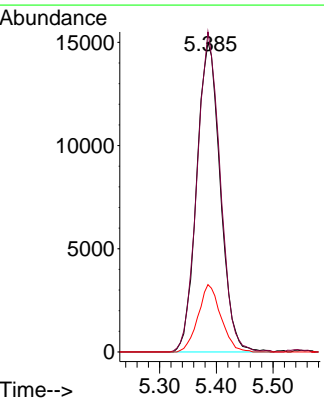
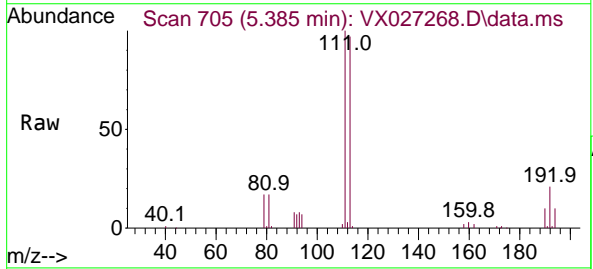
Ion	Ratio	Lower	Upper
114	100		
63	19.0	0.0	42.8
88	16.1	0.0	33.0

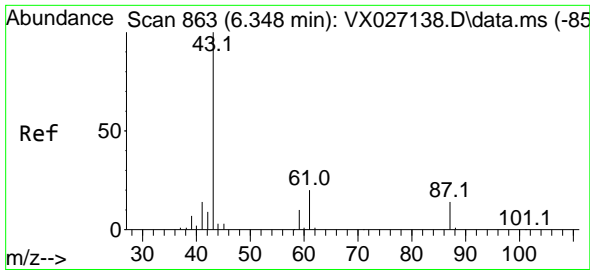


#35  
 Dibromofluoromethane  
 Concen: 51.282 ug/l  
 RT: 5.385 min Scan# 705  
 Delta R.T. -0.006 min  
 Lab File: VX027268.D  
 Acq: 02 Mar 2022 17:27

Tgt Ion:113 Resp: 43363

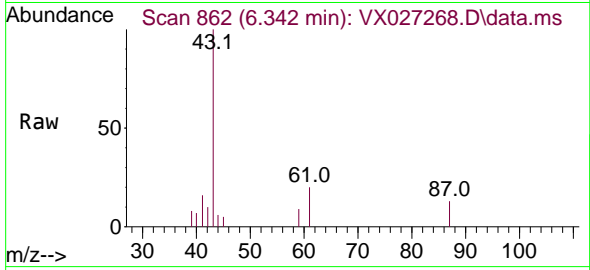
Ion	Ratio	Lower	Upper
113	100		
111	101.6	81.2	121.8
192	21.0	15.0	22.4



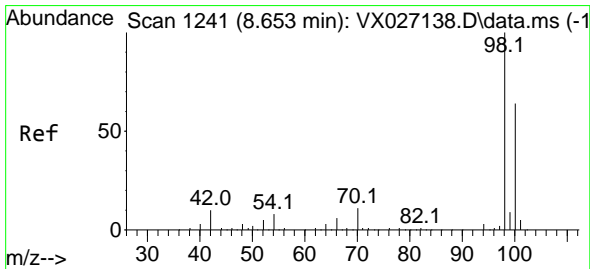
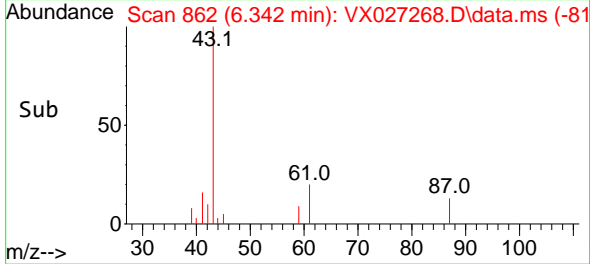
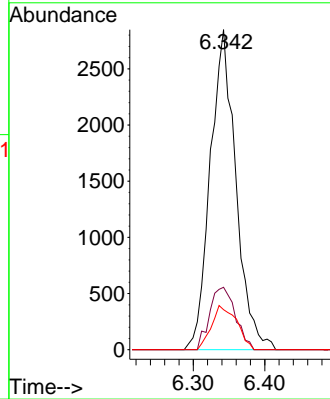


#43  
 Isopropyl Acetate  
 Concen: 3.406 ug/l  
 RT: 6.342 min Scan# 80  
 Delta R.T. -0.006 min  
 Lab File: VX027268.D  
 Acq: 02 Mar 2022 17:27

Instrument : MSVOA\_X  
 ClientSampleId : PB143060TB

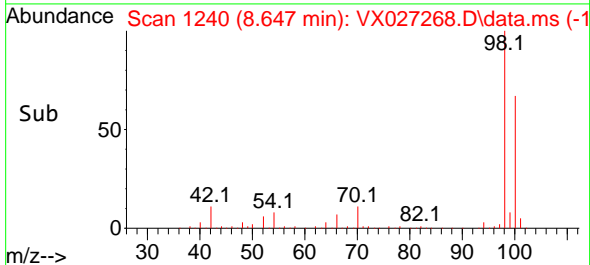
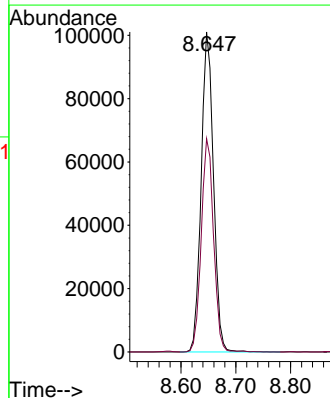
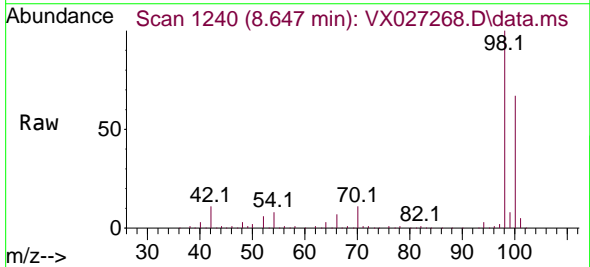


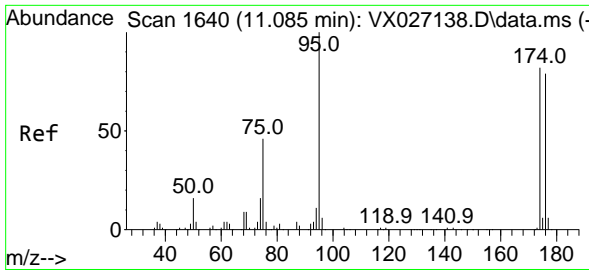
Tgt Ion: 43 Resp: 7099  
 Ion Ratio Lower Upper  
 43 100  
 61 19.6 15.4 23.0  
 87 13.5 10.2 15.2



#50  
 Toluene-d8  
 Concen: 49.774 ug/l  
 RT: 8.647 min Scan# 1240  
 Delta R.T. -0.006 min  
 Lab File: VX027268.D  
 Acq: 02 Mar 2022 17:27

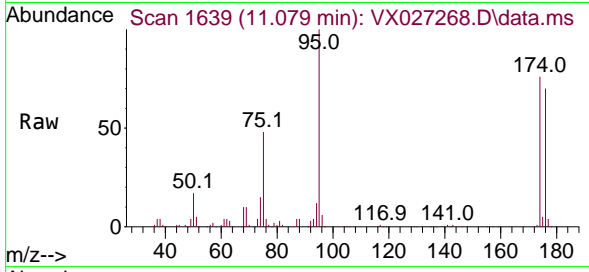
Tgt Ion: 98 Resp: 157373  
 Ion Ratio Lower Upper  
 98 100  
 100 67.0 53.2 79.8



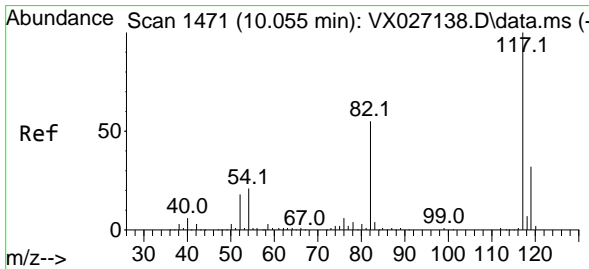
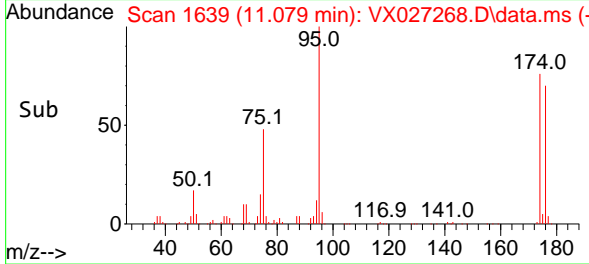
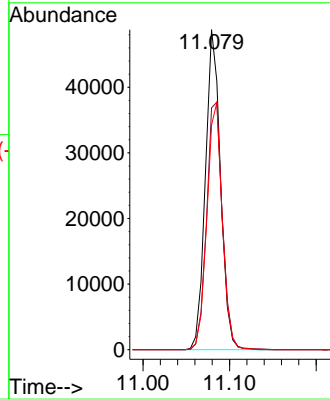


#62  
 4-Bromofluorobenzene  
 Concen: 48.623 ug/l  
 RT: 11.079 min Scan# 1639  
 Delta R.T. -0.006 min  
 Lab File: VX027268.D  
 Acq: 02 Mar 2022 17:27

Instrument : MSVOA\_X  
 ClientSampleId : PB143060TB

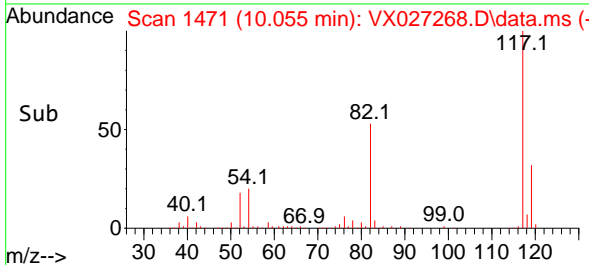
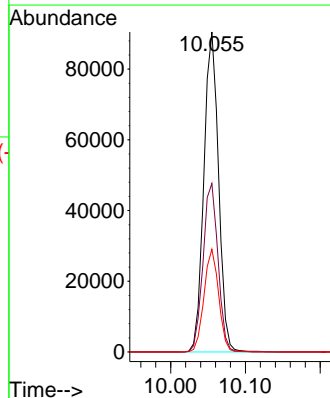
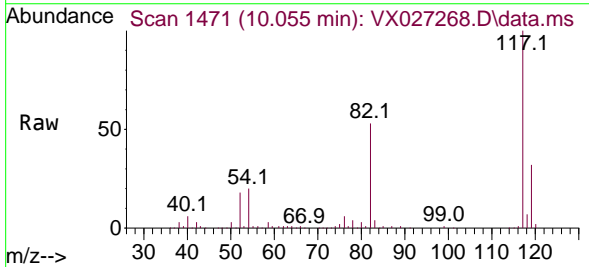


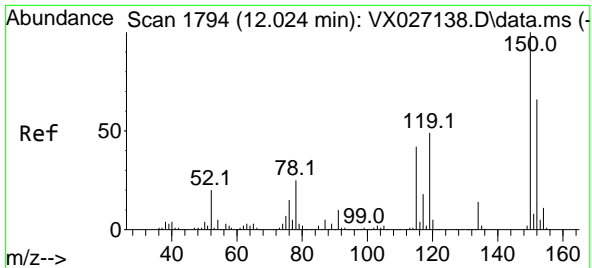
Tgt Ion: 95 Resp: 59011  
 Ion Ratio Lower Upper  
 95 100  
 174 81.0 0.0 148.6  
 176 78.5 0.0 141.4



#63  
 Chlorobenzene-d5  
 Concen: 50.000 ug/l  
 RT: 10.055 min Scan# 1471  
 Delta R.T. -0.000 min  
 Lab File: VX027268.D  
 Acq: 02 Mar 2022 17:27

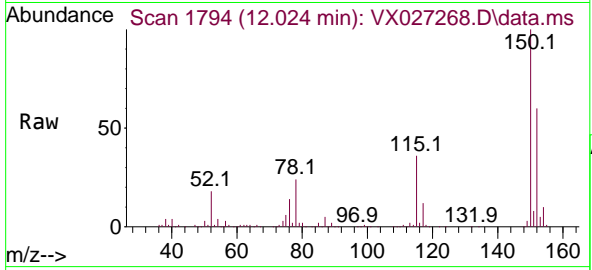
Tgt Ion: 117 Resp: 123344  
 Ion Ratio Lower Upper  
 117 100  
 82 52.7 45.2 67.8  
 119 32.1 26.2 39.2





#72  
 1,4-Dichlorobenzene-d4  
 Concen: 50.000 ug/l  
 RT: 12.024 min Scan# 11  
 Delta R.T. 0.000 min  
 Lab File: VX027268.D  
 Acq: 02 Mar 2022 17:27

Instrument : MSVOA\_X  
 ClientSampleId : PB143060TB



Tgt Ion:152 Resp: 60387

Ion	Ratio	Lower	Upper
152	100		
115	60.9	44.2	132.6
150	161.1	0.0	348.2

