

Data Path : Z:\VOASRV\HPCHEM1\MSVOA X\DATA\WX030419\  
 Data File : VX007816.D  
 Acq On : 04 Mar 2019 17:42  
 Operator : JC/SP  
 Sample : K1719-07  
 Misc : 5.0mL/MSVOA X/WATER  
 ALS Vial : 14 Sample Multiplier: 1

Instrument :  
 MSVOA\_X  
 ClientSampleId :  
 BP-VPB201-GW-520-522

Quant Time: Mar 04 22:02:47 2019  
 Quant Method : Z:\VOASRV\HPCHEM1\MSVOA\_X\METHOD\82X022519W.M  
 Quant Title : SW846 8260  
 QLast Update : Tue Feb 26 01:53:13 2019  
 Response via : Initial Calibration

Internal Standards	R.T.	QIon	Response	Conc	Units	Dev(Min)
1) Pentafluorobenzene	5.67	168	344835	50.00	ug/l	0.00
34) 1,4-Difluorobenzene	6.86	114	536033	50.00	ug/l	0.00
63) Chlorobenzene-d5	10.11	117	500300	50.00	ug/l	0.00
72) 1,4-Dichlorobenzene-d4	12.08	152	242428	50.00	ug/l	0.00

System Monitoring Compounds

33) 1,2-Dichloroethane-d4	6.07	65	187084	43.80	ug/l	0.00
Spiked Amount	50.000		Recovery	=	87.60%	
35) Dibromofluoromethane	5.50	113	170838	47.68	ug/l	0.00
Spiked Amount	50.000		Recovery	=	95.36%	
50) Toluene-d8	8.71	98	644916	47.01	ug/l	0.00
Spiked Amount	50.000		Recovery	=	94.02%	
62) 4-Bromofluorobenzene	11.13	95	235957	46.86	ug/l	0.00
Spiked Amount	50.000		Recovery	=	93.72%	

Target Compounds

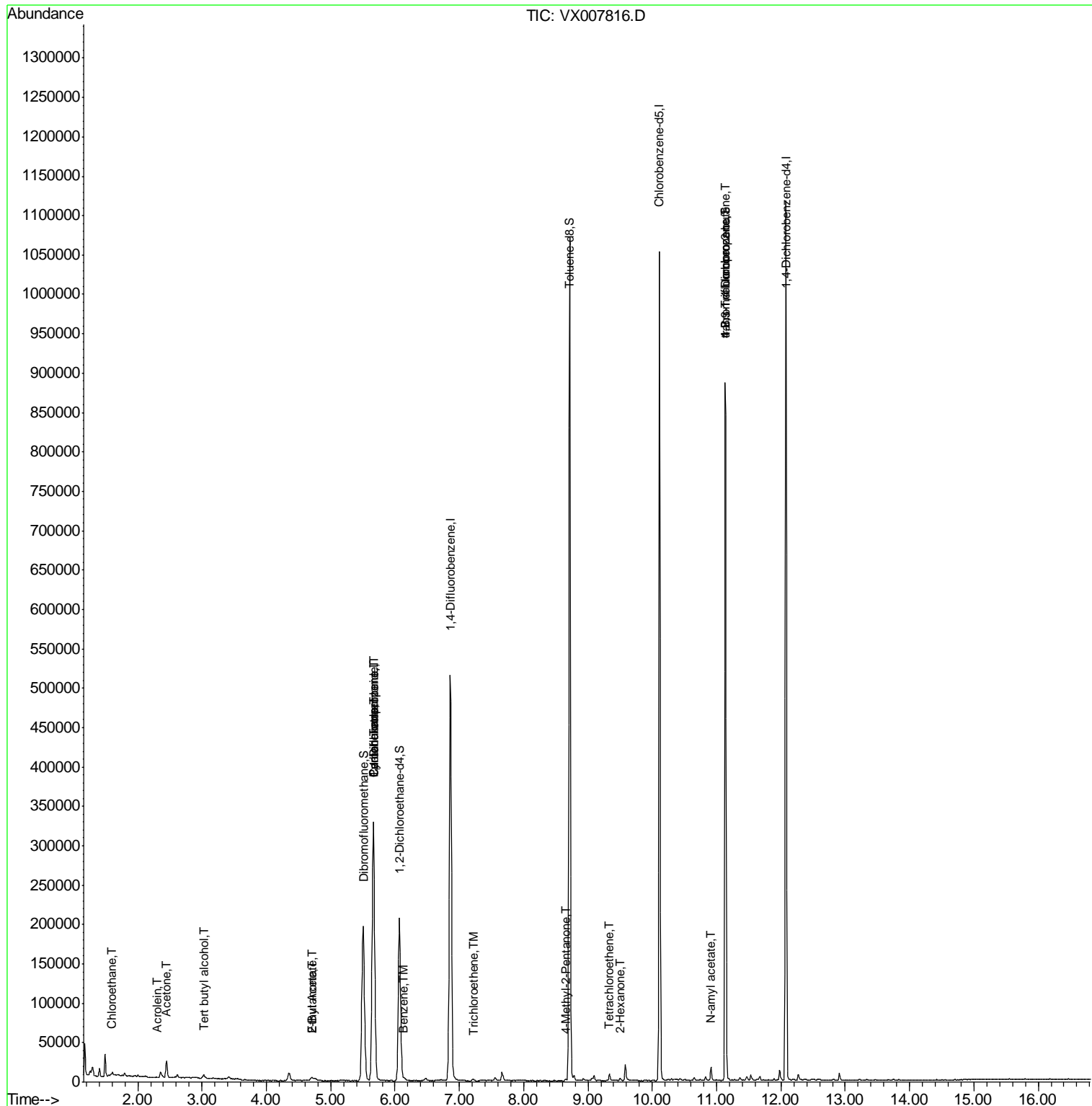
	R.T.	QIon	Response	Conc	Units	Qvalue
5) Bromomethane	1.65	94	320	Below Cal	#	37
6) Chloroethane	1.59	64	4351	1.886	ug/l #	56
11) Tert butyl alcohol	3.02	59	2720	3.356	ug/l #	78
13) Acrolein	2.30	56	481	0.668	ug/l #	57
16) Acetone	2.45	43	22926	12.069	ug/l	96
25) 2-Butanone	4.71	43	8241	2.848	ug/l	99
31) Cyclohexane	5.67	56	5742	0.967	ug/l #	1
36) 1,1-Dichloropropene	5.66	75	21470	4.455	ug/l #	47
37) Ethyl Acetate	4.71	43	8241	1.539	ug/l #	68
38) Carbon Tetrachloride	5.67	117	29839	6.164	ug/l #	17
40) Benzene	6.14	78	3317	0.223	ug/l	96
44) Trichloroethene	7.22	130	929	0.227	ug/l	79
51) 4-Methyl-2-Pentanone	8.65	43	1678	0.304	ug/l	100
59) 2-Hexanone	9.50	43	2203	0.509	ug/l	88
64) Tetrachloroethene	9.34	164	1719	0.423	ug/l	86
74) N-amyl acetate	10.91	43	2251	0.299	ug/l #	1
76) 1,2,3-Trichloropropane	11.13	75	108602	21.016	ug/l #	32
81) trans-1,4-Dichloro-2-buten	11.13	75	108602	55.938	ug/l #	9

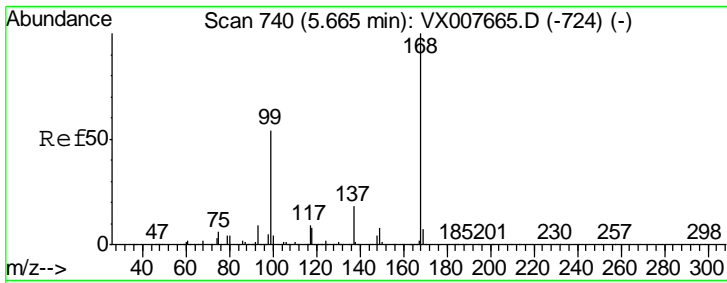
(#) = qualifier out of range (m) = manual integration (+) = signals summed

Data Path : Z:\VOASRV\HPCHEM1\MSVOA X\DATA\VX030419\  
 Data File : VX007816.D  
 Acq On : 04 Mar 2019 17:42  
 Operator : JC/SP  
 Sample : K1719-07  
 Misc : 5.0mL/MSVOA X/WATER  
 ALS Vial : 14 Sample Multiplier: 1

Instrument :  
 MSVOA\_X  
 Client Sampled :  
 BP-VPB201-GW-520-522

Quant Time: Mar 04 22:02:47 2019  
 Quant Method : Z:\VOASRV\HPCHEM1\MSVOA\_X\METHOD\82X022519W.M  
 Quant Title : SW846 8260  
 QLast Update : Tue Feb 26 01:53:13 2019  
 Response via : Initial Calibration

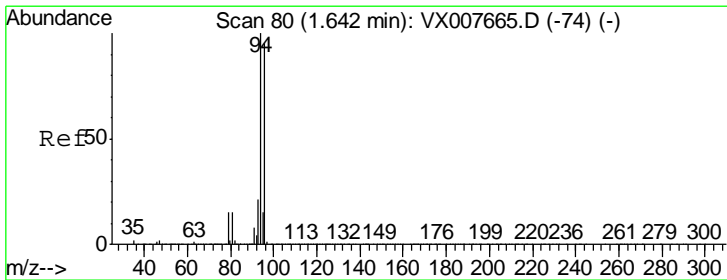
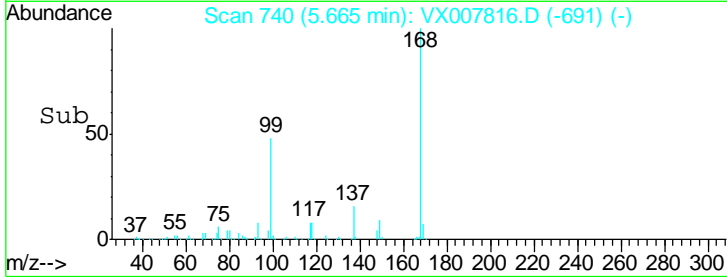
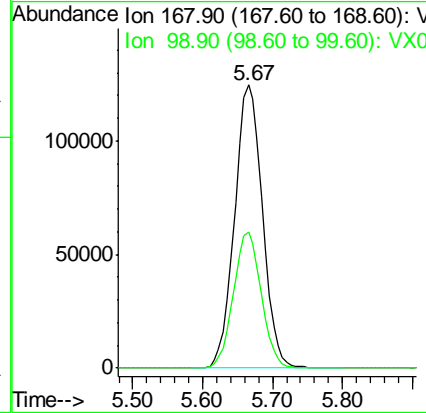
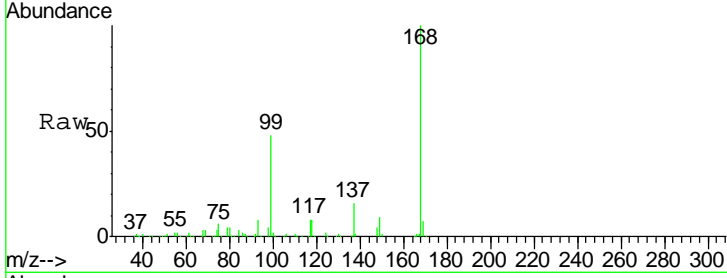




#1  
 Pentafluorobenzene  
 Concen: 50.000 ug/l  
 RT: 5.67 min Scan# 740  
 Delta R.T. -0.00 min  
 Lab File: VX007816.D  
 Acq: 04 Mar 2019 17:42

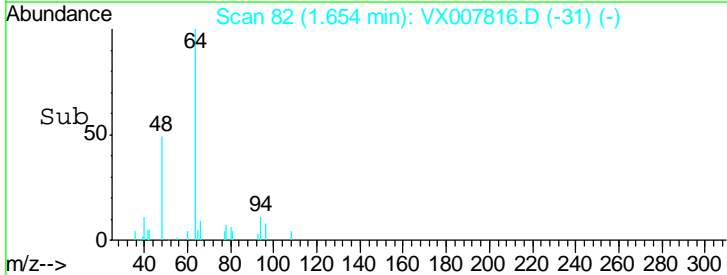
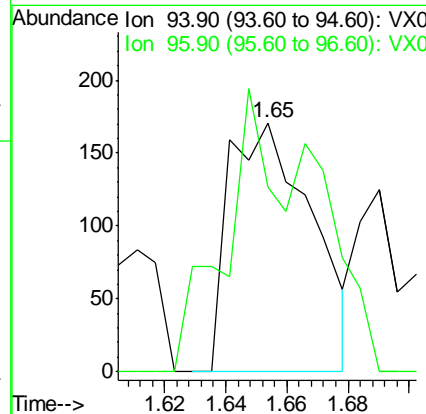
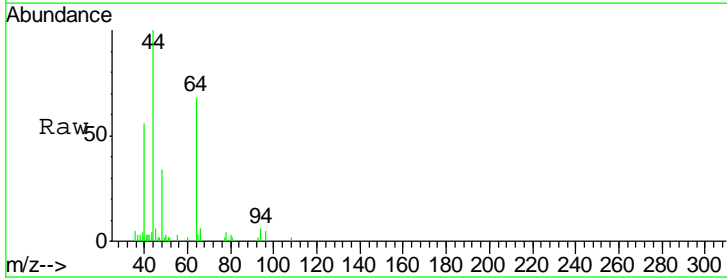
Instrument :  
 MSVOA\_X  
 ClientSampled :  
 BP-VPB201-GW-520-522

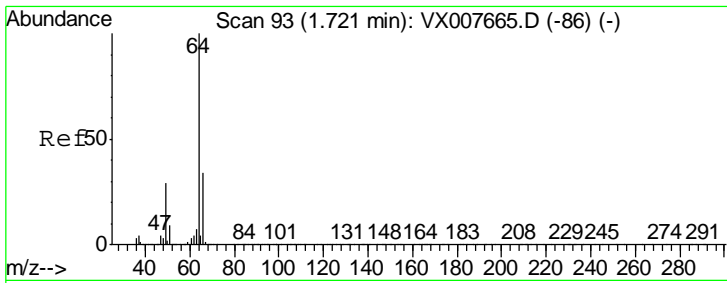
Tgt Ion	Resp	Lower	Upper
168	344835		
99	48.2	37.9	56.9



#5  
 Bromomethane  
 Concen: Below Cal  
 RT: 1.65 min Scan# 82  
 Delta R.T. 0.01 min  
 Lab File: VX007816.D  
 Acq: 04 Mar 2019 17:42

Tgt Ion	Resp	Lower	Upper
94	320		
96	32.2	73.9	110.9#

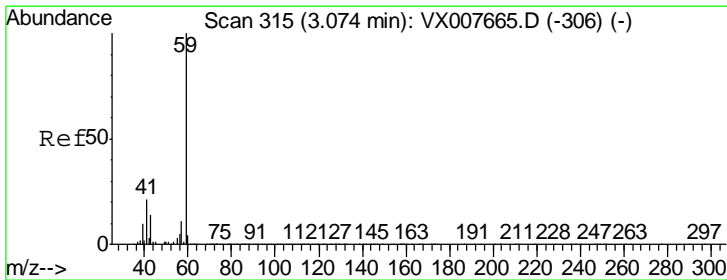
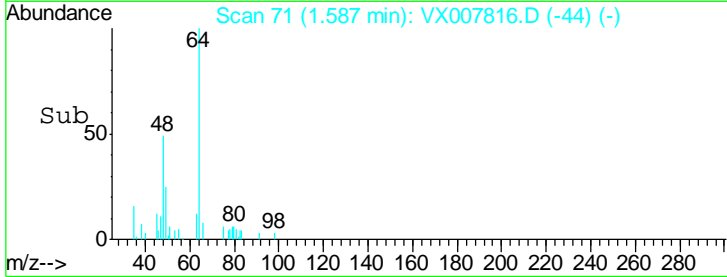
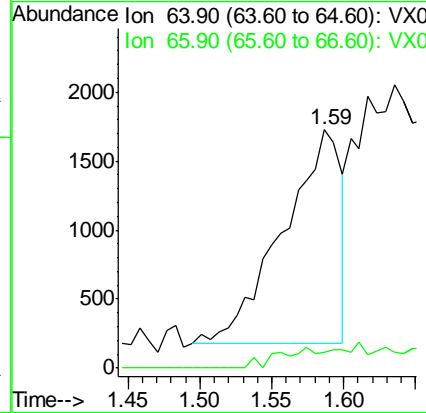
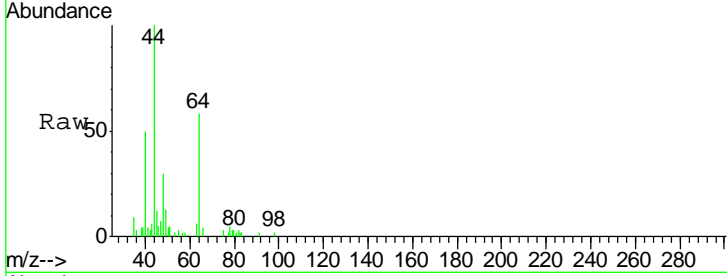




#6  
 Chloroethane  
 Concen: 1.886 ug/l  
 RT: 1.59 min Scan# 71  
 Delta R.T. -0.13 min  
 Lab File: VX007816.D  
 Acq: 04 Mar 2019 17:42

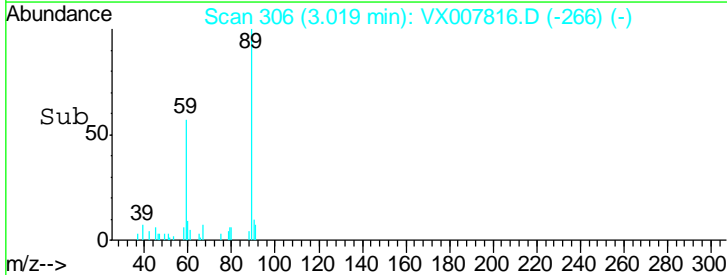
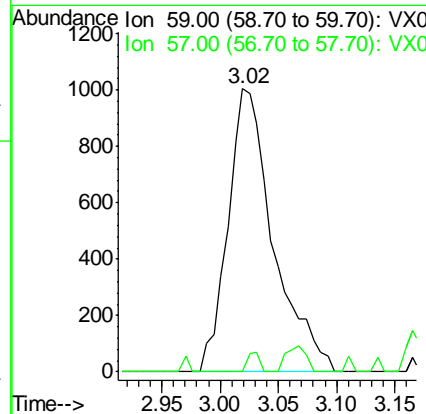
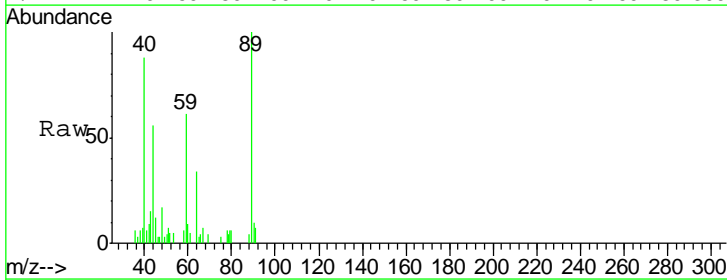
Instrument :  
 MSVOA\_X  
 ClientSampled :  
 BP-VPB201-GW-520-522

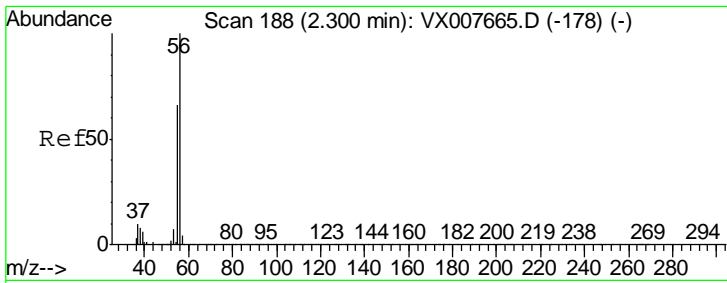
Tgt Ion: 64 Resp: 4351  
 Ion Ratio Lower Upper  
 64 100  
 66 7.6 25.5 38.3#



#11  
 Tert butyl alcohol  
 Concen: 3.356 ug/l  
 RT: 3.02 min Scan# 306  
 Delta R.T. -0.06 min  
 Lab File: VX007816.D  
 Acq: 04 Mar 2019 17:42

Tgt Ion: 59 Resp: 2720  
 Ion Ratio Lower Upper  
 59 100  
 57 1.8 8.1 12.1#

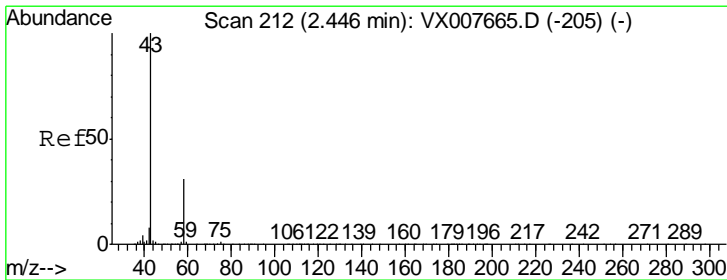
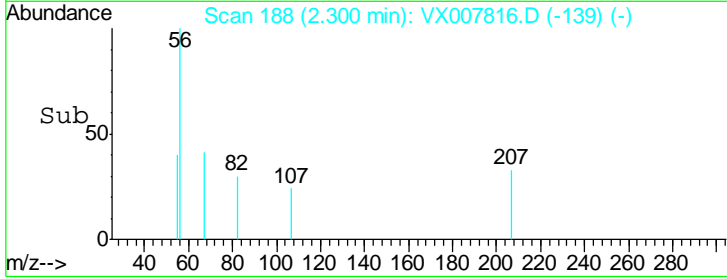
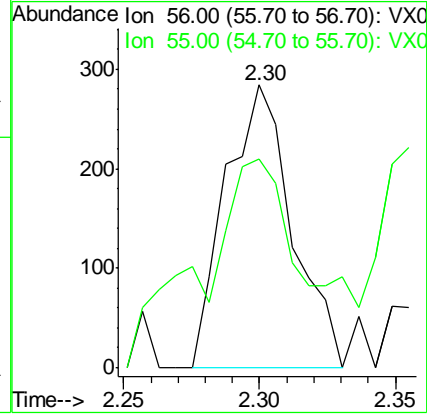
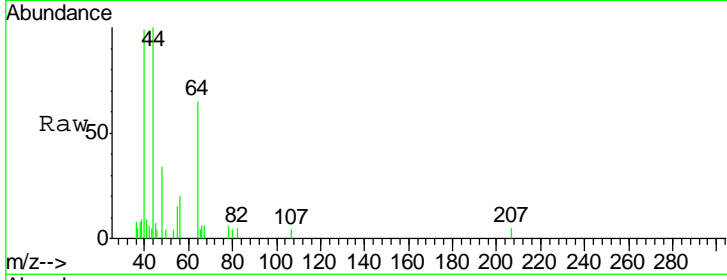




#13  
 Acrolein  
 Concen: 0.668 ug/l  
 RT: 2.30 min Scan# 188  
 Delta R.T. -0.00 min  
 Lab File: VX007816.D  
 Acq: 04 Mar 2019 17:42

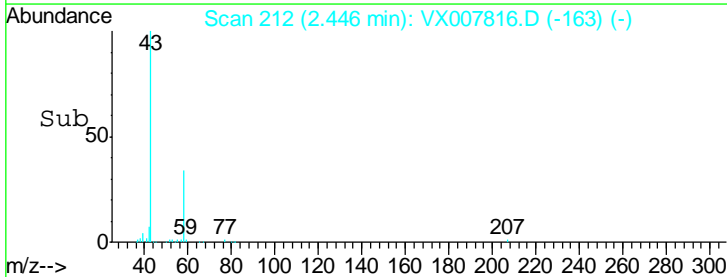
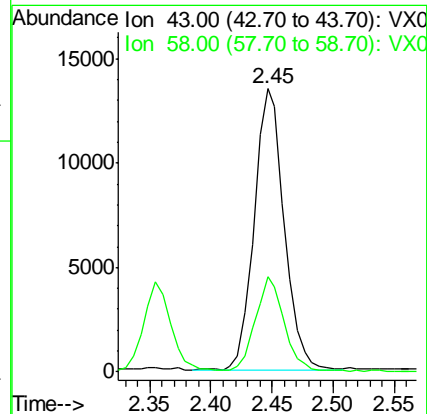
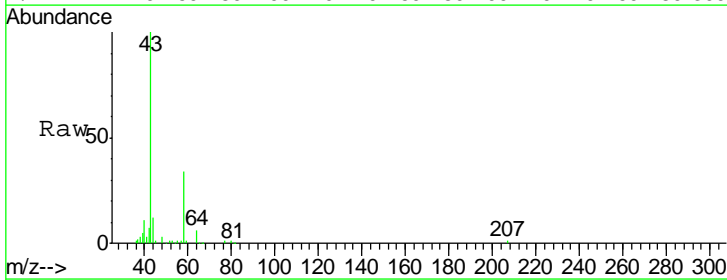
Instrument :  
 MSVOA\_X  
 ClientSampleID :  
 BP-VPB201-GW-520-522

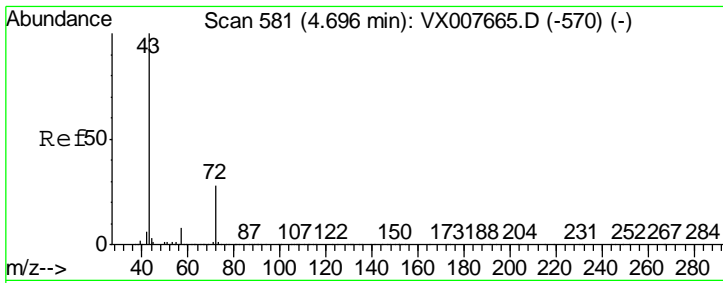
Tgt Ion: 56 Resp: 481  
 Ion Ratio Lower Upper  
 56 100  
 55 106.9 56.9 85.3#



#16  
 Acetone  
 Concen: 12.069 ug/l  
 RT: 2.45 min Scan# 212  
 Delta R.T. -0.00 min  
 Lab File: VX007816.D  
 Acq: 04 Mar 2019 17:42

Tgt Ion: 43 Resp: 22926  
 Ion Ratio Lower Upper  
 43 100  
 58 33.3 24.9 37.3

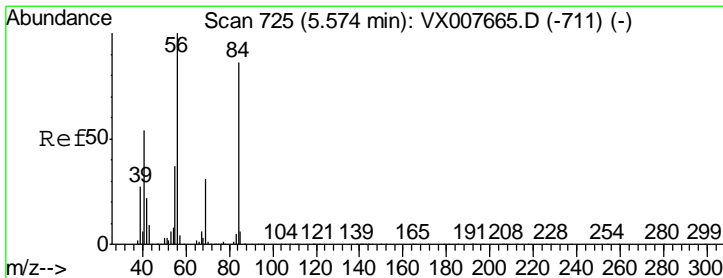
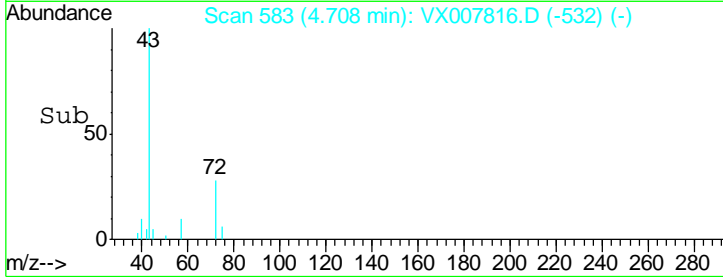
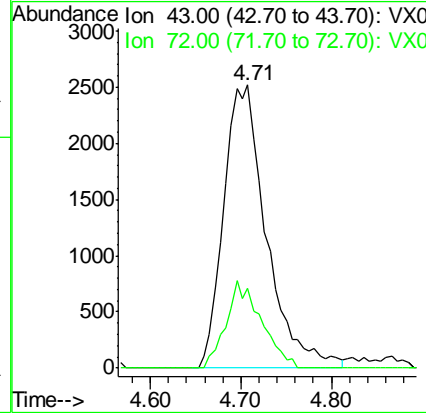
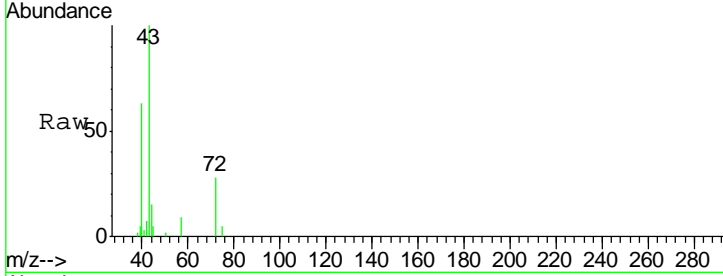




#25  
 2-Butanone  
 Concen: 2.848 ug/l  
 RT: 4.71 min Scan# 583  
 Delta R.T. 0.01 min  
 Lab File: VX007816.D  
 Acq: 04 Mar 2019 17:42

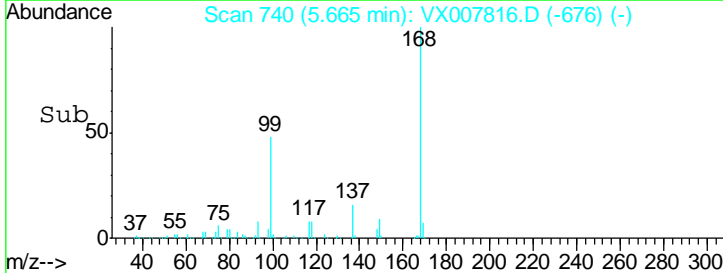
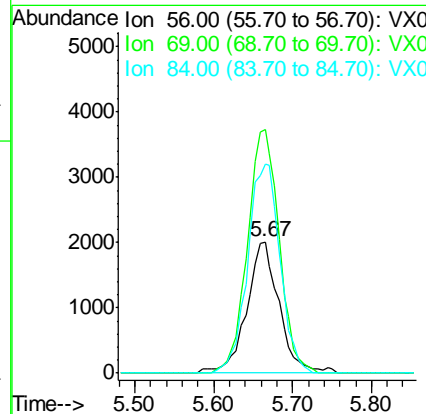
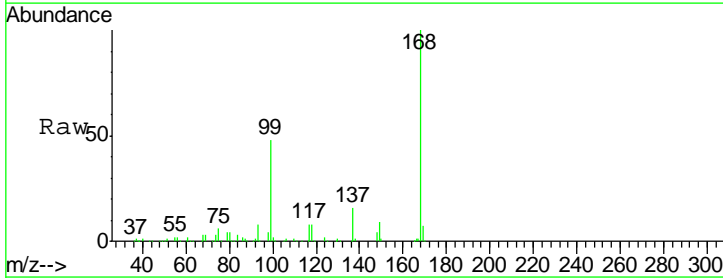
Instrument : MSVOA\_X  
 ClientSampleId : BP-VPB201-GW-520-522

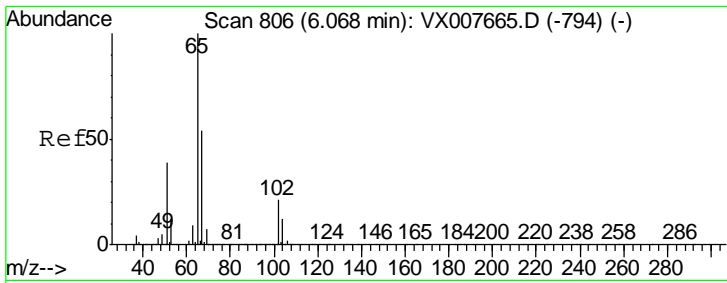
Tgt Ion	Resp	Lower	Upper
43	100		
72	28.1	22.2	33.2



#31  
 Cyclohexane  
 Concen: 0.967 ug/l  
 RT: 5.67 min Scan# 740  
 Delta R.T. 0.09 min  
 Lab File: VX007816.D  
 Acq: 04 Mar 2019 17:42

Tgt Ion	Resp	Lower	Upper
56	100		
69	185.3	23.0	34.6#
84	159.4	69.8	104.6#

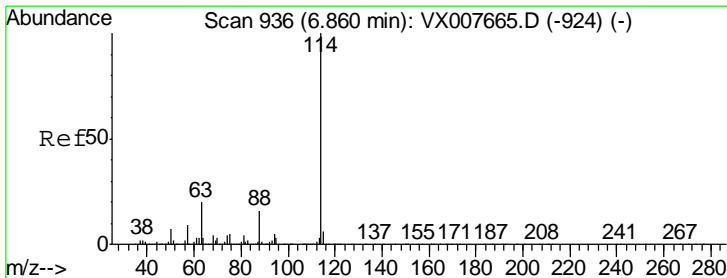
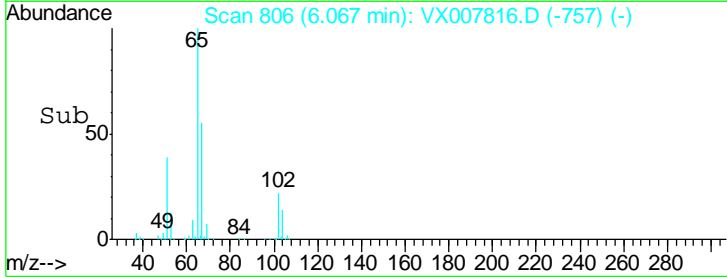
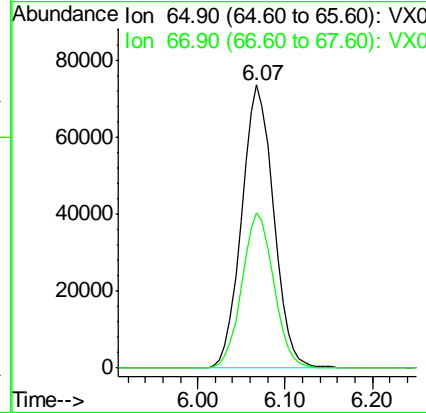
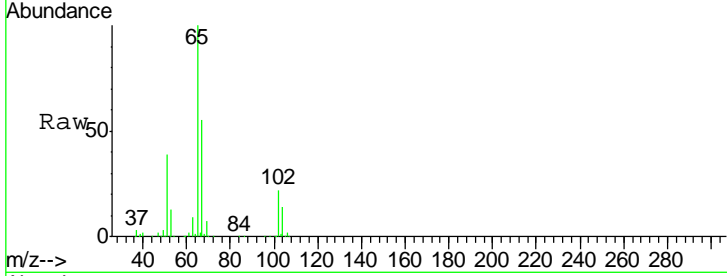




#33  
 1,2-Dichloroethane-d4  
 Concen: 43.799 ug/l  
 RT: 6.07 min Scan# 806  
 Delta R.T. -0.00 min  
 Lab File: VX007816.D  
 Acq: 04 Mar 2019 17:42

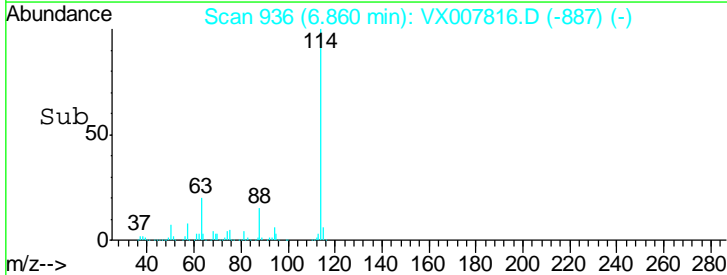
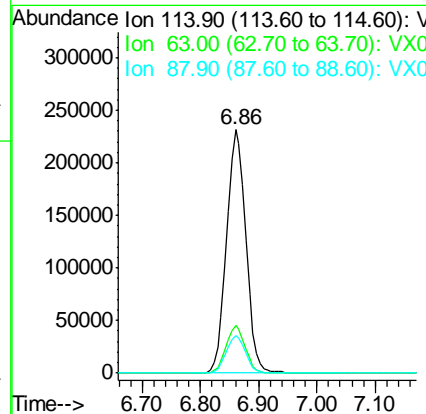
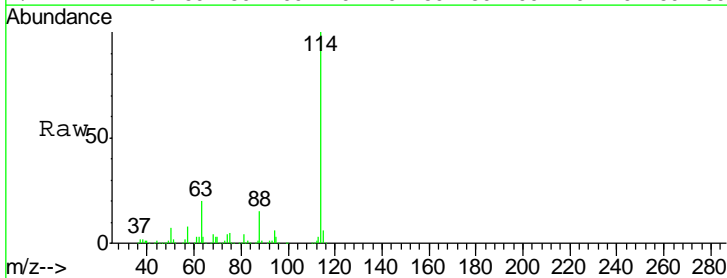
Instrument :  
 MSVOA\_X  
 ClientSampled :  
 BP-VPB201-GW-520-522

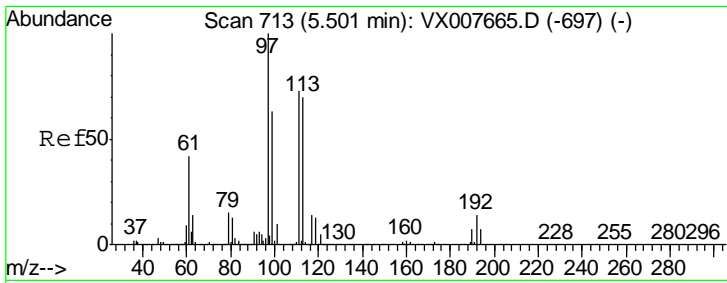
Tgt Ion: 65 Resp: 187084  
 Ion Ratio Lower Upper  
 65 100  
 67 54.9 0.0 108.8



#34  
 1,4-Difluorobenzene  
 Concen: 50.000 ug/l  
 RT: 6.86 min Scan# 936  
 Delta R.T. -0.00 min  
 Lab File: VX007816.D  
 Acq: 04 Mar 2019 17:42

Tgt Ion: 114 Resp: 536033  
 Ion Ratio Lower Upper  
 114 100  
 63 19.6 0.0 35.6  
 88 15.5 0.0 29.6

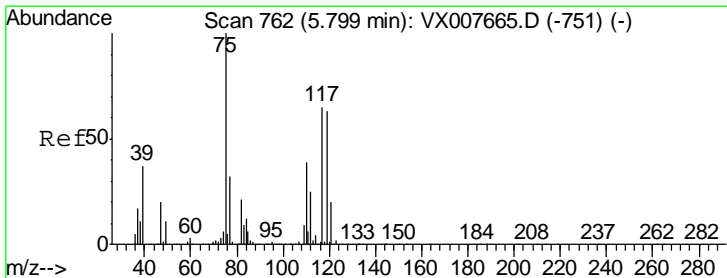
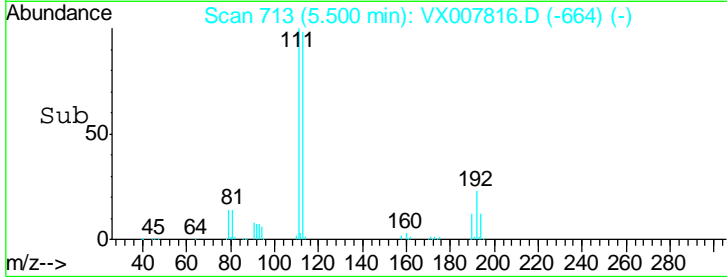
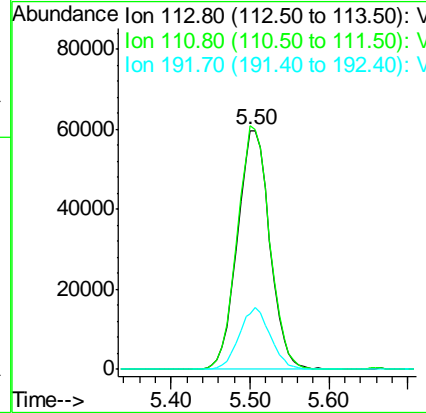
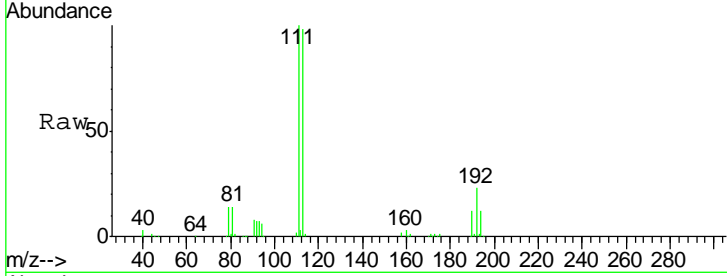




#35  
 Dibromofluoromethane  
 Concen: 47.677 ug/l  
 RT: 5.50 min Scan# 713  
 Delta R.T. -0.00 min  
 Lab File: VX007816.D  
 Acq: 04 Mar 2019 17:42

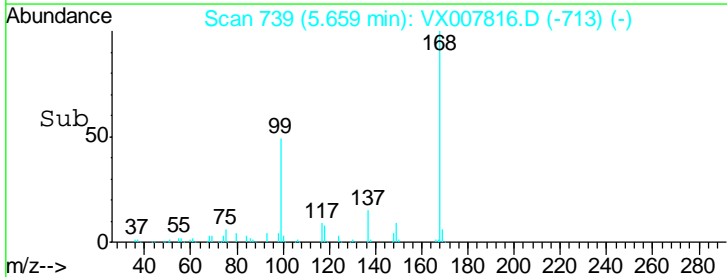
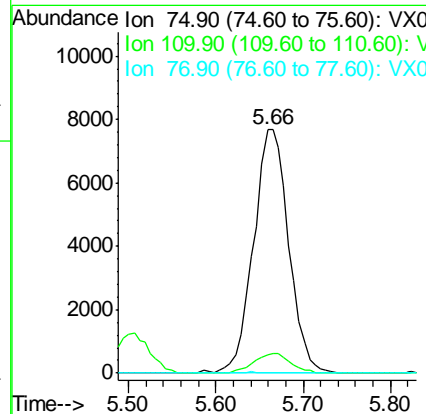
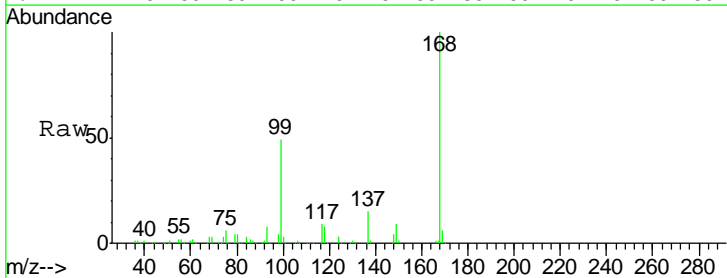
Instrument :  
 MSVOA\_X  
 ClientSampleId :  
 BP-VPB201-GW-520-522

Tgt Ion	Resp	Lower	Upper
113	170838		
113	100		
111	101.6	81.8	122.8
192	24.7	18.5	27.7

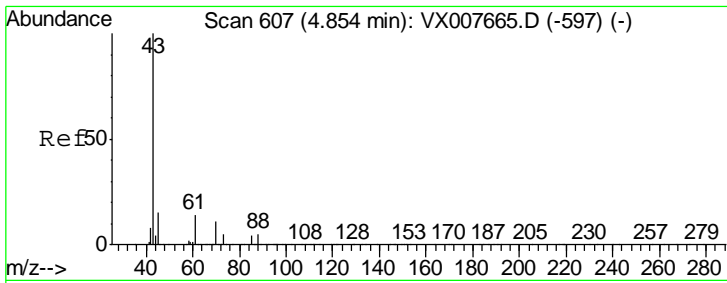


#36  
 1,1-Dichloropropene  
 Concen: 4.455 ug/l  
 RT: 5.66 min Scan# 739  
 Delta R.T. -0.14 min  
 Lab File: VX007816.D  
 Acq: 04 Mar 2019 17:42

Tgt Ion	Resp	Lower	Upper
75	21470		
75	100		
110	8.4	20.0	59.9#
77	0.0	24.7	37.1#



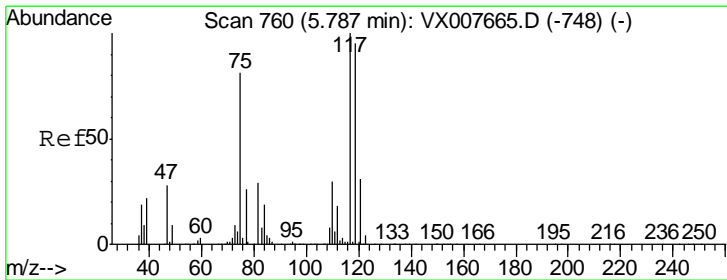
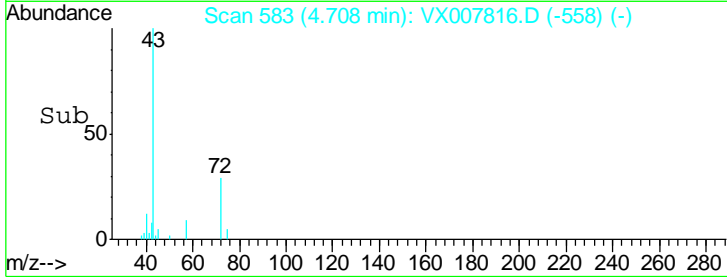
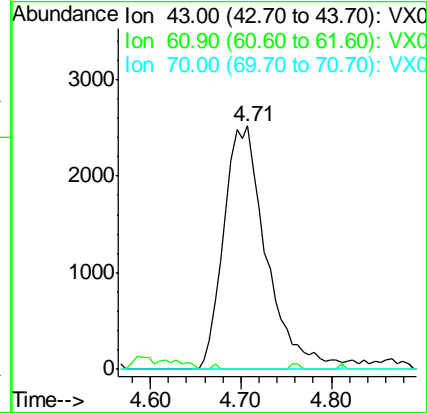
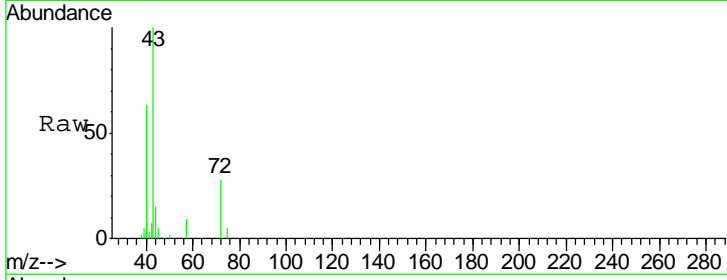




#37  
Ethyl Acetate  
Concen: 1.539 ug/l  
RT: 4.71 min Scan# 583  
Delta R.T. -0.15 min  
Lab File: VX007816.D  
Acq: 04 Mar 2019 17:42

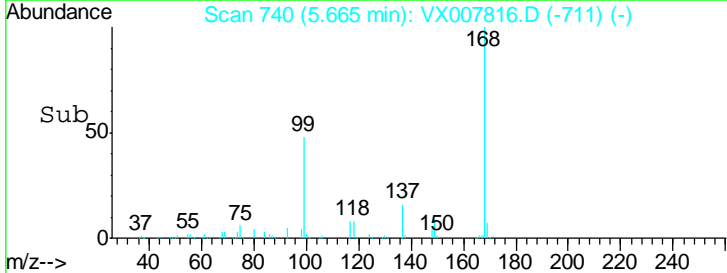
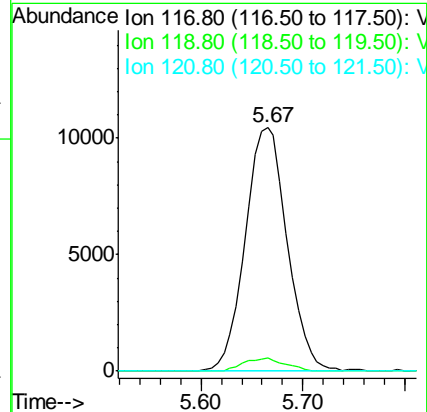
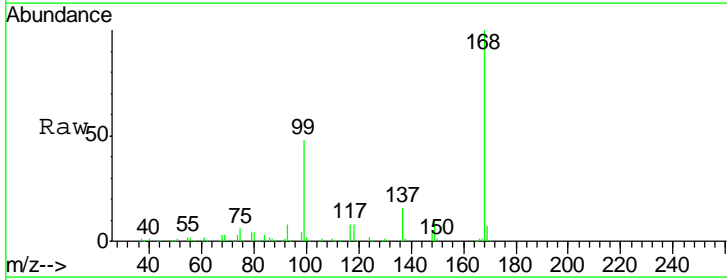
Instrument :  
MSVOA\_X  
ClientSampled :  
BP-VPB201-GW-520-522

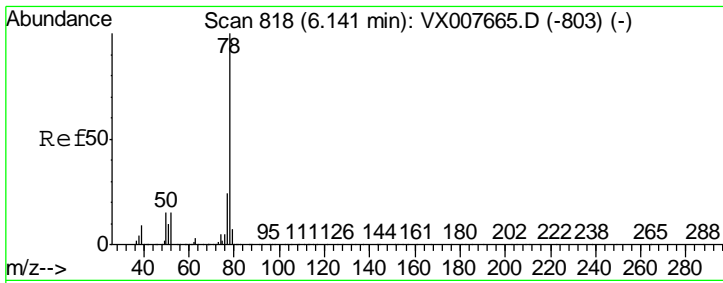
Tgt Ion	Resp	Lower	Upper
43	100		
61	0.0	11.3	16.9#
70	0.0	8.6	13.0#



#38  
Carbon Tetrachloride  
Concen: 6.164 ug/l  
RT: 5.67 min Scan# 740  
Delta R.T. -0.12 min  
Lab File: VX007816.D  
Acq: 04 Mar 2019 17:42

Tgt Ion	Resp	Lower	Upper
117	100		
119	5.6	75.3	112.9#
121	0.0	25.0	37.4#

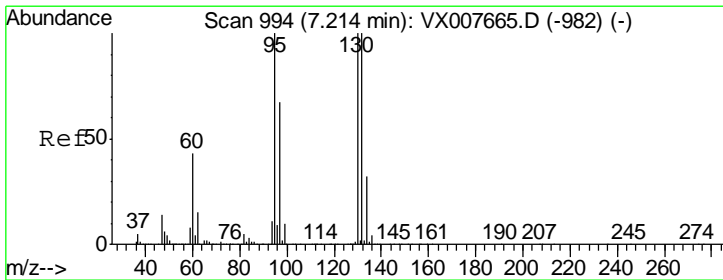
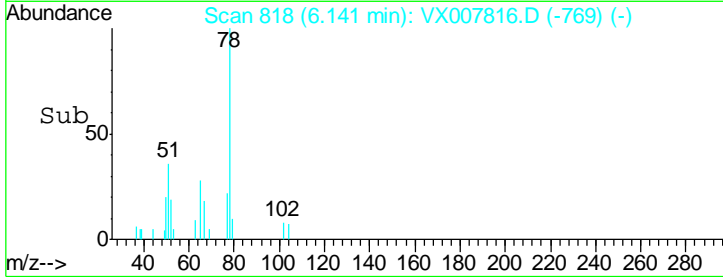
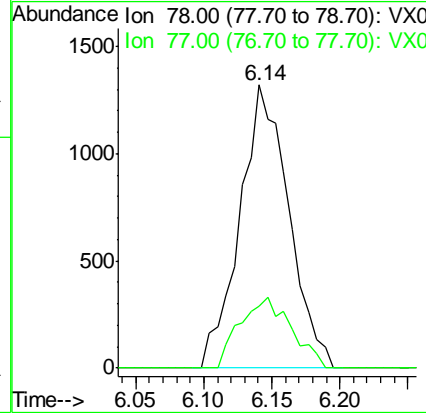
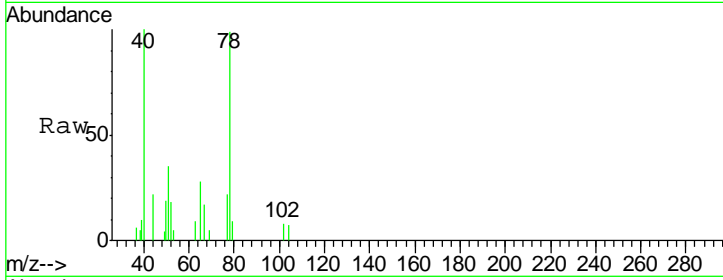




#40  
Benzene  
Concen: 0.223 ug/l  
RT: 6.14 min Scan# 818  
Delta R.T. -0.00 min  
Lab File: VX007816.D  
Acq: 04 Mar 2019 17:42

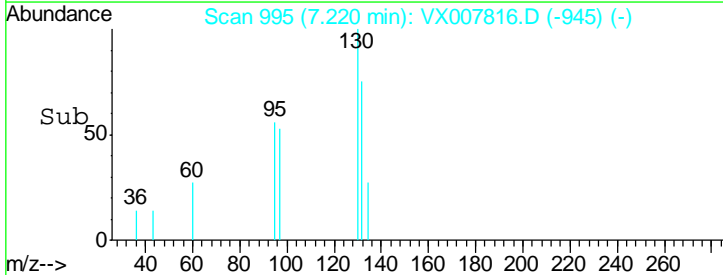
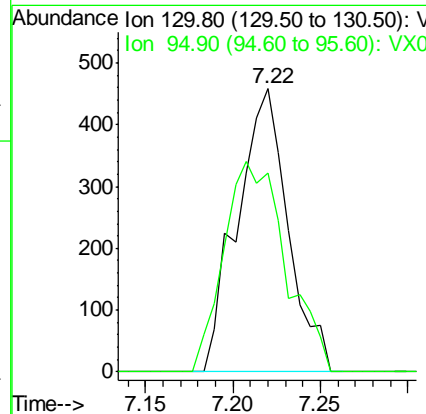
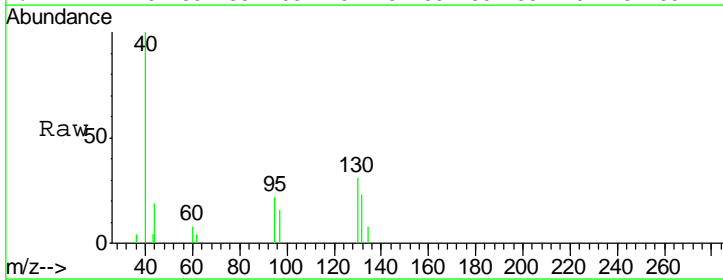
Instrument : MSVOA\_X  
ClientSampled : BP-VPB201-GW-520-522

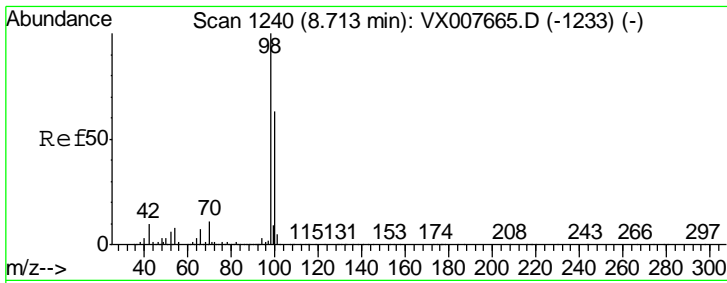
Tgt Ion: 78 Resp: 3317  
Ion Ratio Lower Upper  
78 100  
77 22.0 19.3 28.9



#44  
Trichloroethene  
Concen: 0.227 ug/l  
RT: 7.22 min Scan# 995  
Delta R.T. 0.01 min  
Lab File: VX007816.D  
Acq: 04 Mar 2019 17:42

Tgt Ion: 130 Resp: 929  
Ion Ratio Lower Upper  
130 100  
95 70.5 0.0 180.0

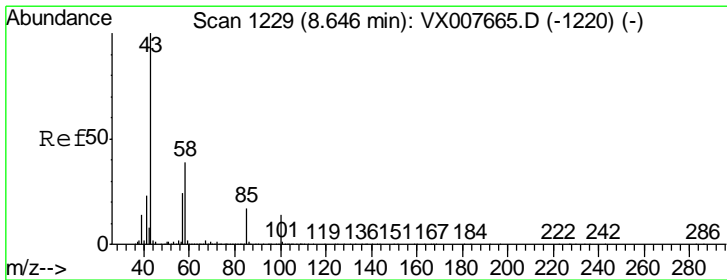
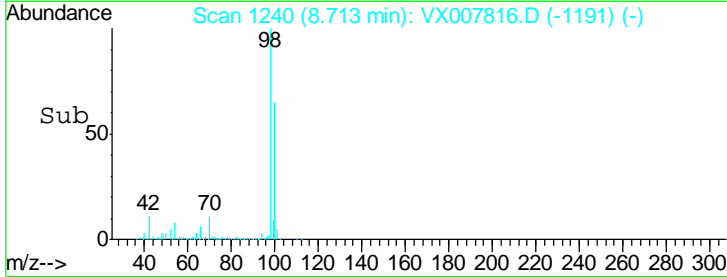
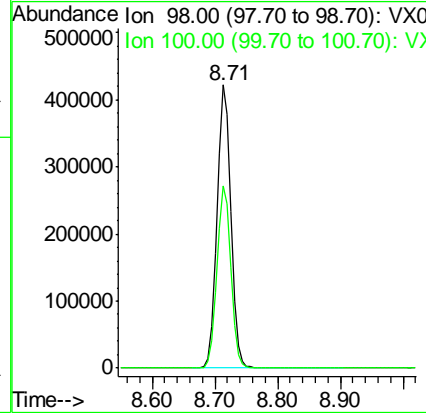
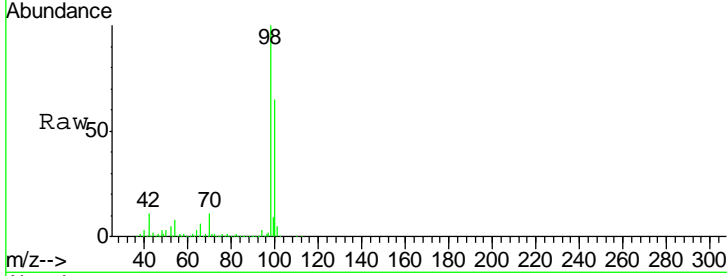




#50  
 Toluene-d8  
 Concen: 47.013 ug/l  
 RT: 8.71 min Scan# 1240  
 Delta R.T. -0.00 min  
 Lab File: VX007816.D  
 Acq: 04 Mar 2019 17:42

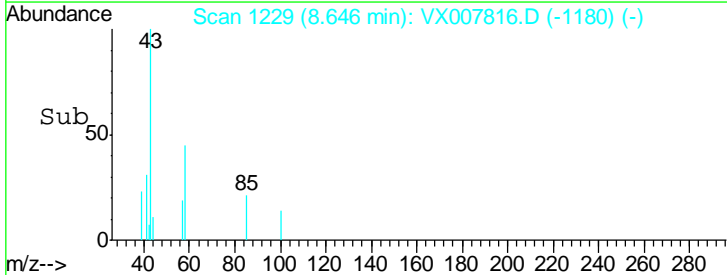
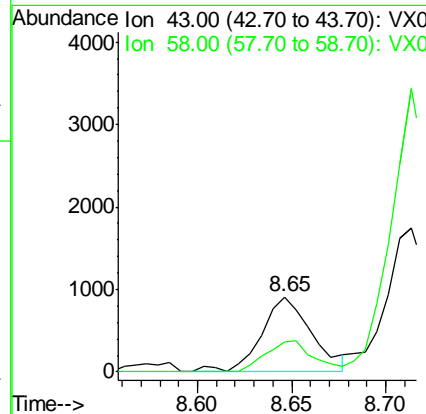
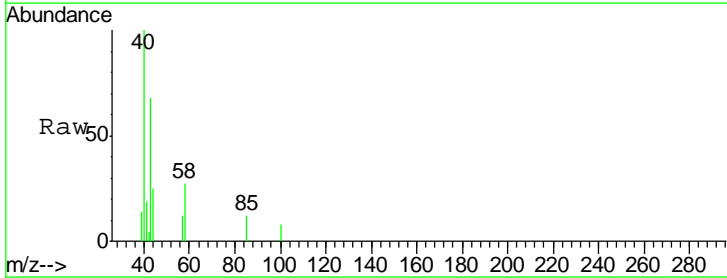
Instrument :  
 MSVOA\_X  
 ClientSampled :  
 BP-VPB201-GW-520-522

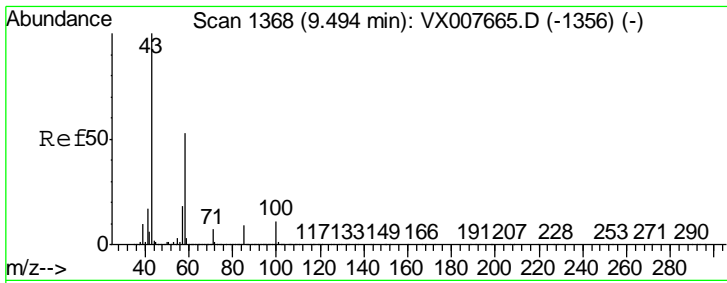
Tgt Ion: 98 Resp: 644916  
 Ion Ratio Lower Upper  
 98 100  
 100 64.6 51.6 77.4



#51  
 4-Methyl-2-Pentanone  
 Concen: 0.304 ug/l  
 RT: 8.65 min Scan# 1229  
 Delta R.T. -0.00 min  
 Lab File: VX007816.D  
 Acq: 04 Mar 2019 17:42

Tgt Ion: 43 Resp: 1678  
 Ion Ratio Lower Upper  
 43 100  
 58 39.2 31.2 46.8

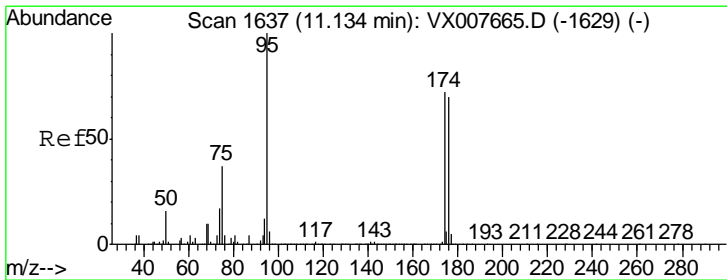
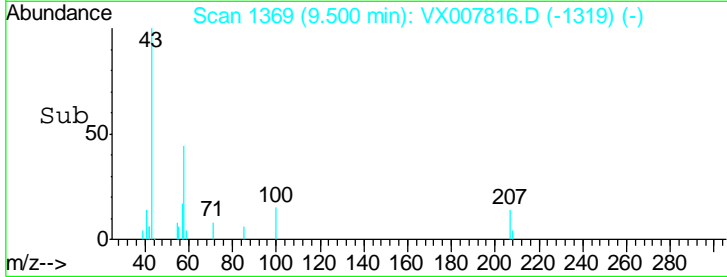
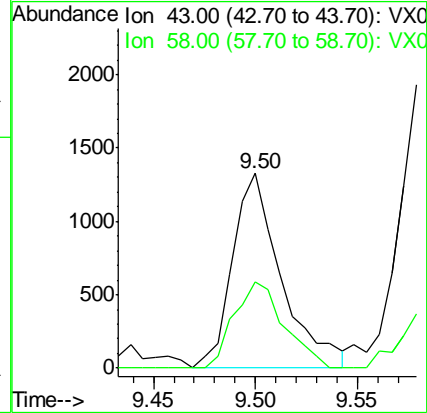
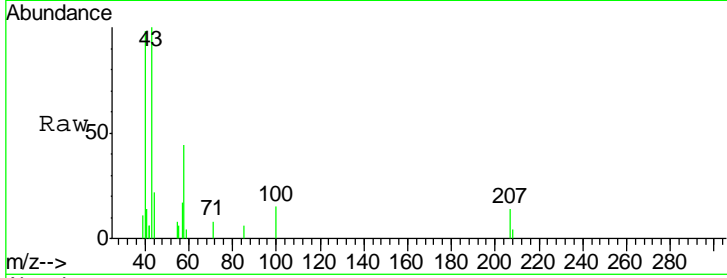




#59  
 2-Hexanone  
 Concen: 0.509 ug/l  
 RT: 9.50 min Scan# 1369  
 Delta R.T. 0.01 min  
 Lab File: VX007816.D  
 Acq: 04 Mar 2019 17:42

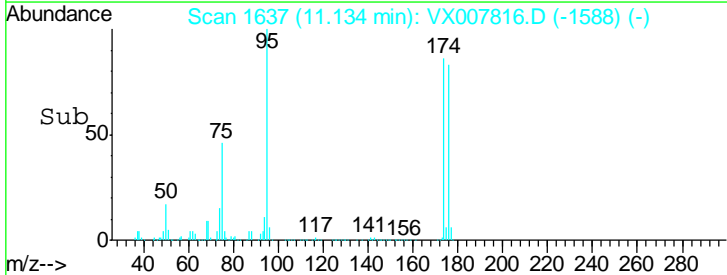
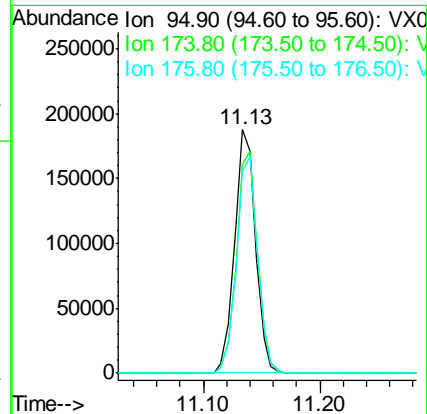
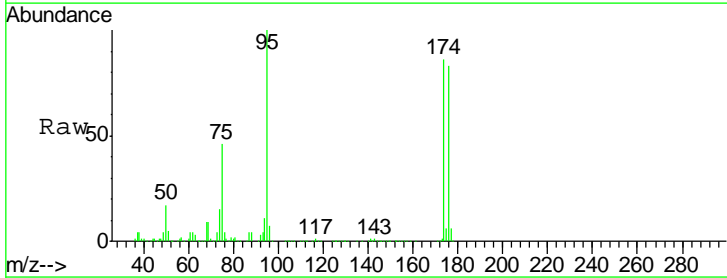
**Instrument :**  
 MSVOA\_X  
**ClientSampled :**  
 BP-VPB201-GW-520-522

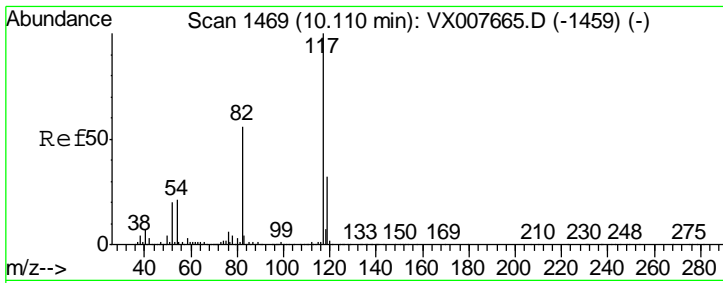
Tgt Ion: 43 Resp: 2203  
 Ion Ratio Lower Upper  
 43 100  
 58 45.5 27.1 81.3



#62  
 4-Bromofluorobenzene  
 Concen: 46.864 ug/l  
 RT: 11.13 min Scan# 1637  
 Delta R.T. -0.00 min  
 Lab File: VX007816.D  
 Acq: 04 Mar 2019 17:42

Tgt Ion: 95 Resp: 235957  
 Ion Ratio Lower Upper  
 95 100  
 174 91.9 0.0 189.2  
 176 89.4 0.0 186.2

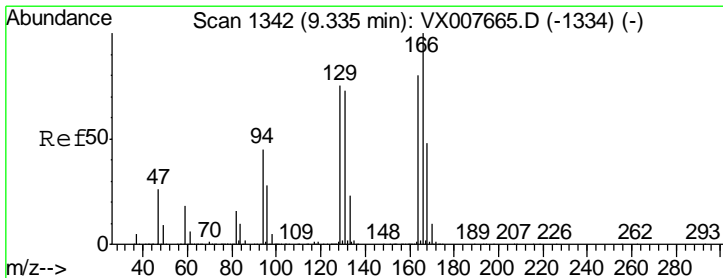
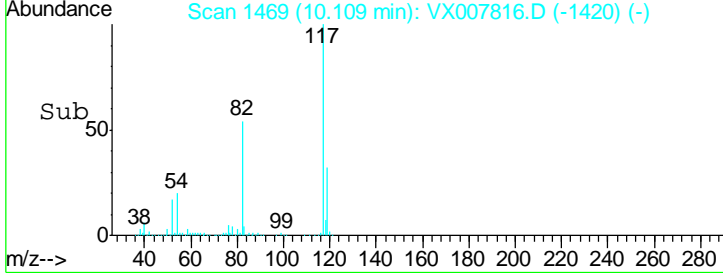
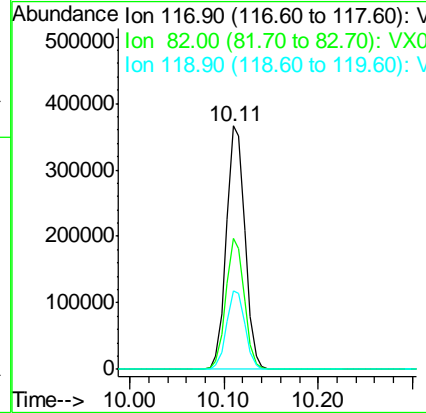
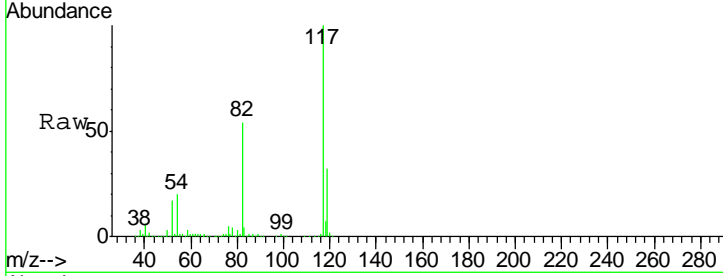




#63  
 Chlorobenzene-d5  
 Concen: 50.000 ug/l  
 RT: 10.11 min Scan# 1469  
 Delta R.T. -0.00 min  
 Lab File: VX007816.D  
 Acq: 04 Mar 2019 17:42

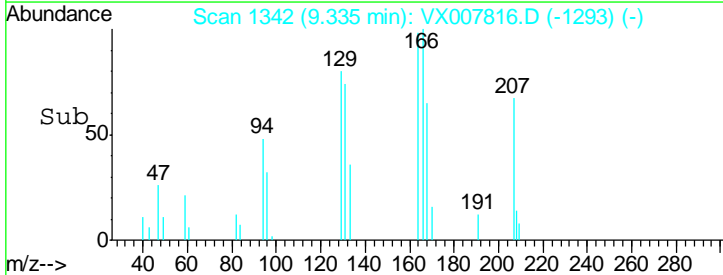
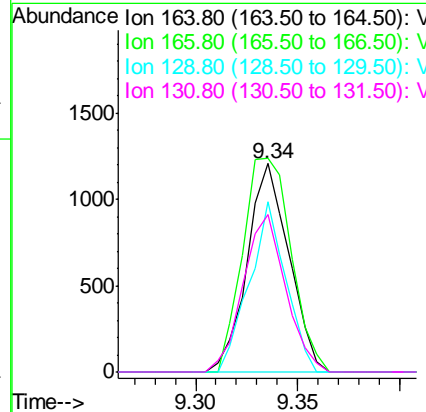
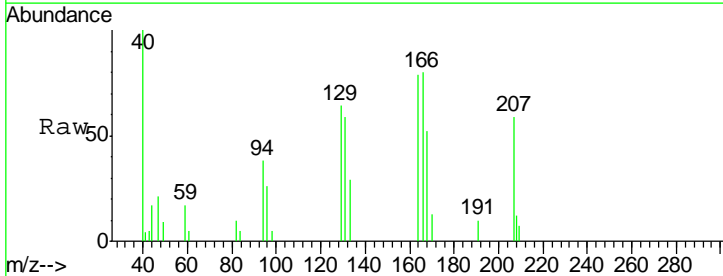
Instrument :  
 MSVOA\_X  
 ClientSampled :  
 BP-VPB201-GW-520-522

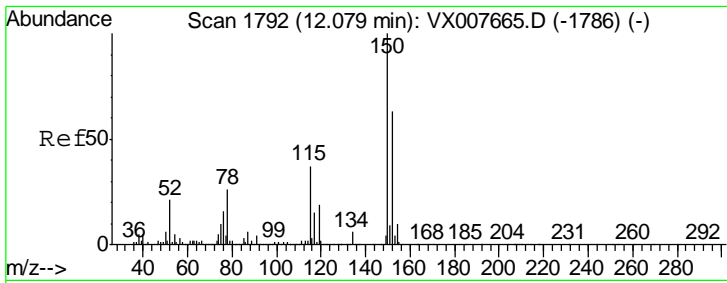
Tgt Ion	Resp	Lower	Upper
117	500300		
82	53.9	42.1	63.1
119	32.3	26.5	39.7



#64  
 Tetrachloroethene  
 Concen: 0.423 ug/l  
 RT: 9.34 min Scan# 1342  
 Delta R.T. -0.00 min  
 Lab File: VX007816.D  
 Acq: 04 Mar 2019 17:42

Tgt Ion	Resp	Lower	Upper
164	1719		
166	102.4	101.0	151.4
129	81.9	70.5	105.7
131	75.6	69.8	104.6

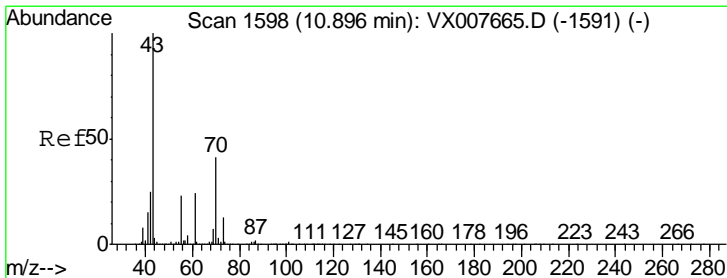
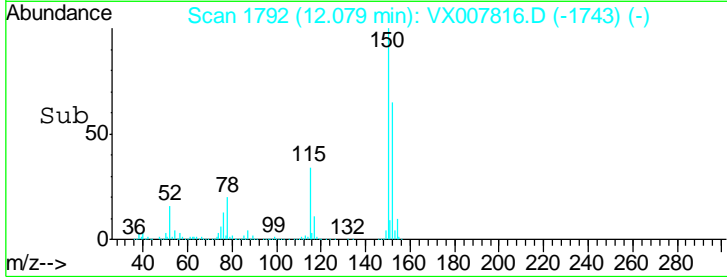
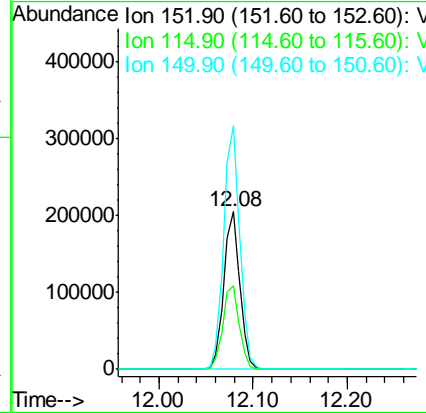
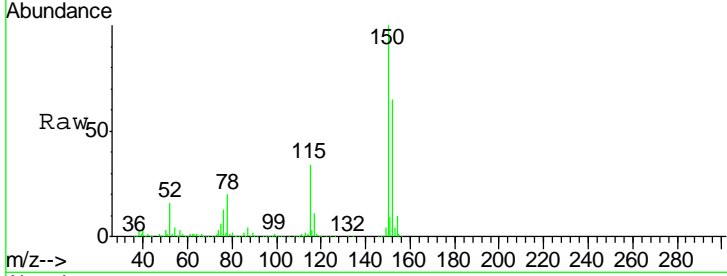




#72  
 1,4-Dichlorobenzene-d4  
 Concen: 50.000 ug/l  
 RT: 12.08 min Scan# 1792  
 Delta R.T. -0.00 min  
 Lab File: VX007816.D  
 Acq: 04 Mar 2019 17:42

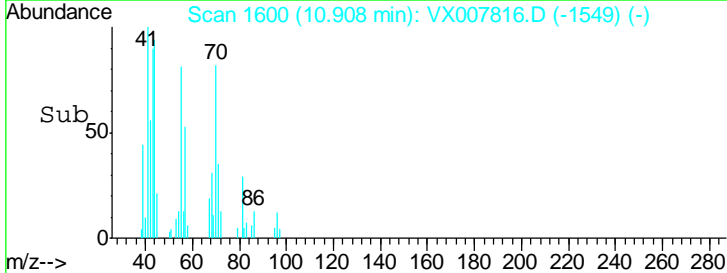
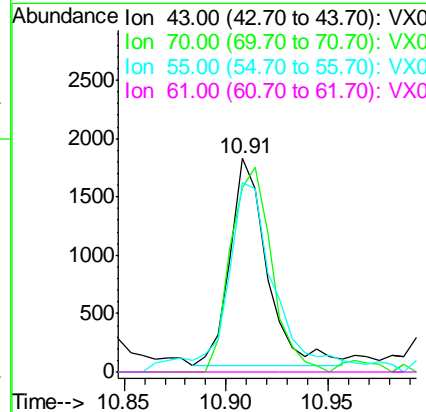
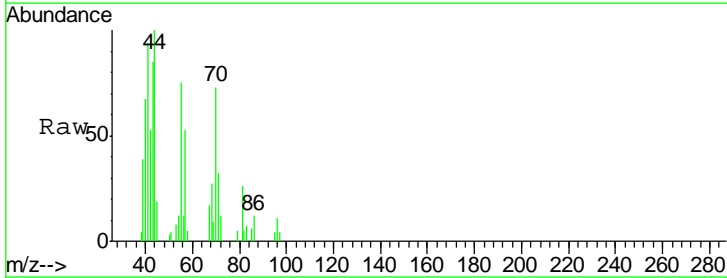
Instrument : MSVOA\_X  
 ClientSampled : BP-VPB201-GW-520-522

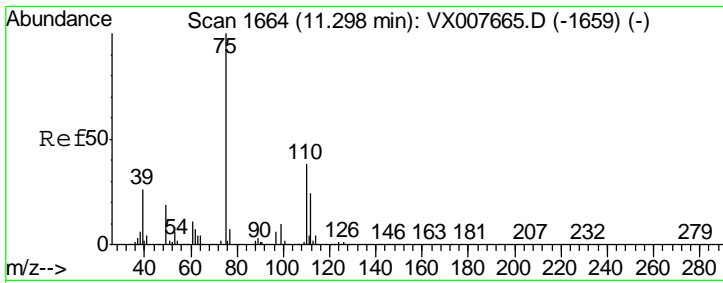
Tgt Ion	Resp	Lower	Upper
152	100		
115	54.8	38.0	114.0
150	156.0	0.0	346.4



#74  
 N-amyl acetate  
 Concen: 0.299 ug/l  
 RT: 10.91 min Scan# 1600  
 Delta R.T. 0.01 min  
 Lab File: VX007816.D  
 Acq: 04 Mar 2019 17:42

Tgt Ion	Resp	Lower	Upper
43	100		
70	108.5	33.8	50.6#
55	121.1	19.5	29.3#
61	0.0	19.4	29.2#

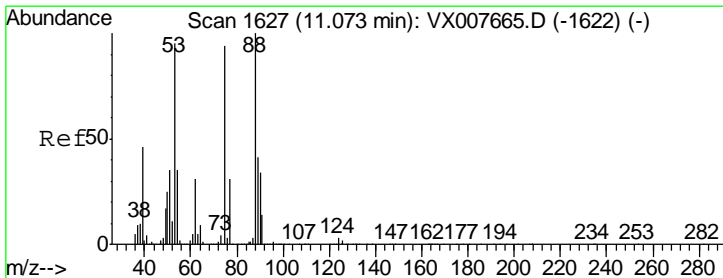
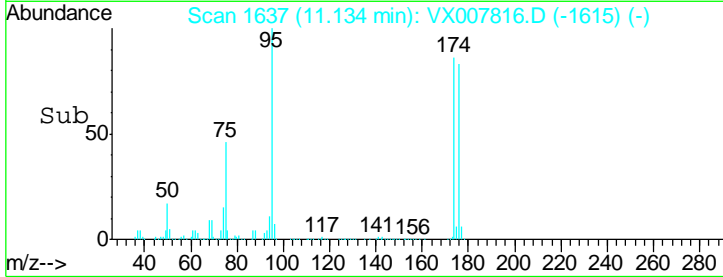
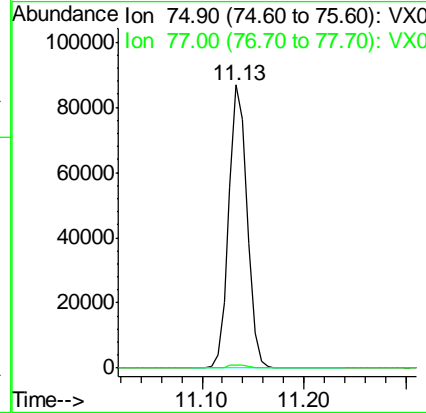
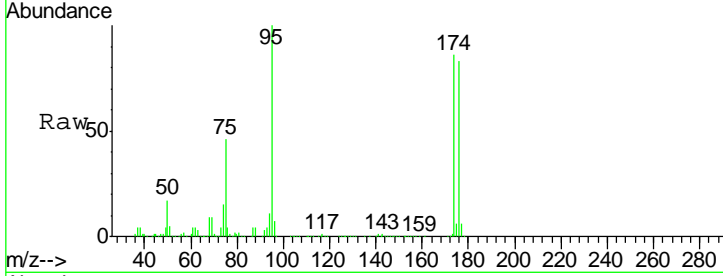




#76  
 1,2,3-Trichloropropane  
 Concen: 21.016 ug/l  
 RT: 11.13 min Scan# 1637  
 Delta R.T. -0.16 min  
 Lab File: VX007816.D  
 Acq: 04 Mar 2019 17:42

Instrument : MSVOA\_X  
 ClientSampled : BP-VPB201-GW-520-522

Tgt Ion: 75 Resp: 108602  
 Ion Ratio Lower Upper  
 75 100  
 77 1.3 23.0 69.0#



#81  
 trans-1,4-Dichloro-2-butene  
 Concen: 55.938 ug/l  
 RT: 11.13 min Scan# 1637  
 Delta R.T. 0.06 min  
 Lab File: VX007816.D  
 Acq: 04 Mar 2019 17:42

Tgt Ion: 75 Resp: 108602  
 Ion Ratio Lower Upper  
 75 100  
 53 0.0 81.0 121.6#  
 89 0.0 41.4 62.0#

