

Data Path : Z:\VOASRV\HPCHEM1\MSVOA X\DATA\VX030419\
 Data File : VX007820.D
 Acq On : 04 Mar 2019 19:28
 Operator : JC/SP
 Sample : K1715-13
 Misc : 5.0mL/MSVOA X/WATER
 ALS Vial : 18 Sample Multiplier: 1

Instrument :
 MSVOA_X
 ClientSampled :
 TP-4-B

Quant Time: Mar 04 22:04:44 2019
 Quant Method : Z:\VOASRV\HPCHEM1\MSVOA_X\METHOD\82X022519W.M
 Quant Title : SW846 8260
 QLast Update : Tue Feb 26 01:53:13 2019
 Response via : Initial Calibration

Internal Standards	R.T.	QIon	Response	Conc	Units	Dev(Min)
1) Pentafluorobenzene	5.67	168	323400	50.00	ug/l	0.00
34) 1,4-Difluorobenzene	6.86	114	499046	50.00	ug/l	0.00
63) Chlorobenzene-d5	10.11	117	461613	50.00	ug/l	0.00
72) 1,4-Dichlorobenzene-d4	12.08	152	222085	50.00	ug/l	0.00

System Monitoring Compounds

33) 1,2-Dichloroethane-d4	6.07	65	174192	43.48	ug/l	0.00
Spiked Amount	50.000		Recovery	=	86.96%	
35) Dibromofluoromethane	5.51	113	165471	49.60	ug/l	0.00
Spiked Amount	50.000		Recovery	=	99.20%	
50) Toluene-d8	8.71	98	593873	46.50	ug/l	0.00
Spiked Amount	50.000		Recovery	=	93.00%	
62) 4-Bromofluorobenzene	11.13	95	215277	45.93	ug/l	0.00
Spiked Amount	50.000		Recovery	=	91.86%	

Target Compounds

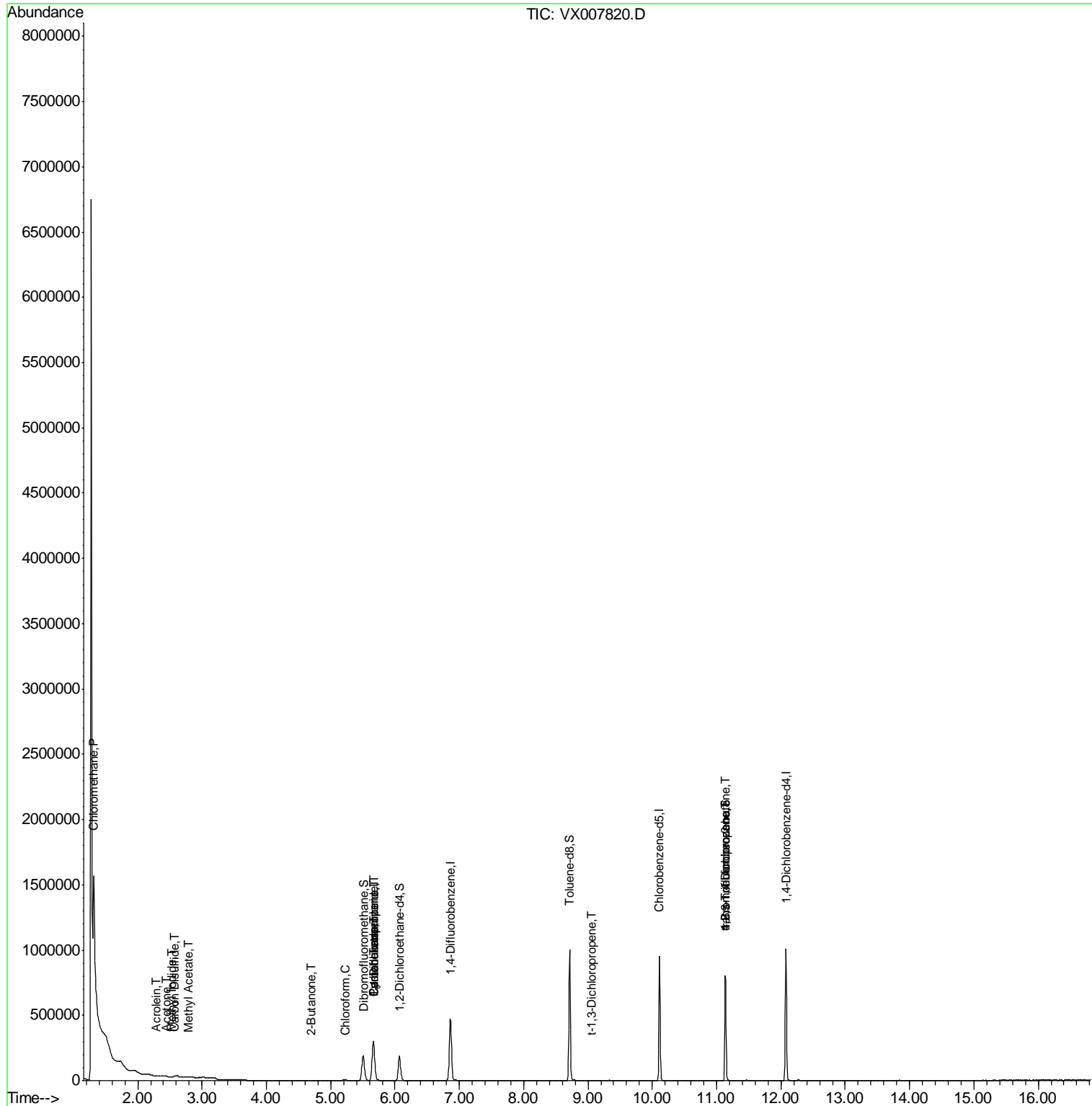
	R.T.	QIon	Response	Conc	Units	Qvalue
3) Chloromethane	1.31	50	55453	16.797	ug/l #	43
5) Bromomethane	1.65	94	579	Below Cal		94
10) Methyl Iodide	2.53	142	841	0.215	ug/l #	86
13) Acrolein	2.29	56	196	0.290	ug/l #	71
16) Acetone	2.45	43	2753	1.545	ug/l #	89
17) Carbon Disulfide	2.57	76	2168	0.275	ug/l #	91
18) Methyl Acetate	2.79	43	2522	0.649	ug/l	100
25) 2-Butanone	4.70	43	1187	0.437	ug/l #	88
30) Chloroform	5.23	83	6361	1.003	ug/l	97
31) Cyclohexane	5.67	56	5234	0.940	ug/l #	1
36) 1,1-Dichloropropene	5.67	75	19781	4.409	ug/l #	47
38) Carbon Tetrachloride	5.67	117	27378	6.075	ug/l #	16
53) t-1,3-Dichloropropene	9.05	75	212	2.840	ug/l #	53
76) 1,2,3-Trichloropropane	11.13	75	99374	20.992	ug/l #	32
81) trans-1,4-Dichloro-2-buten	11.13	75	99374	55.877	ug/l #	9

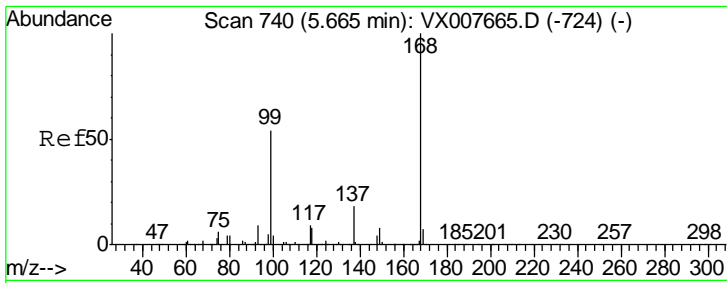
(#) = qualifier out of range (m) = manual integration (+) = signals summed

Data Path : Z:\VOASRV\HPCHEM1\MSVOA X\DATA\VX030419\
 Data File : VX007820.D
 Acq On : 04 Mar 2019 19:28
 Operator : JC/SP
 Sample : K1715-13
 Misc : 5.0mL/MSVOA X/WATER
 ALS Vial : 18 Sample Multiplier: 1

Instrument :
 MSVOA_X
 ClientSampled :
 TP-4-B

Quant Time: Mar 04 22:04:44 2019
 Quant Method : Z:\VOASRV\HPCHEM1\MSVOA_X\METHOD\82X022519W.M
 Quant Title : SW846 8260
 QLast Update : Tue Feb 26 01:53:13 2019
 Response via : Initial Calibration

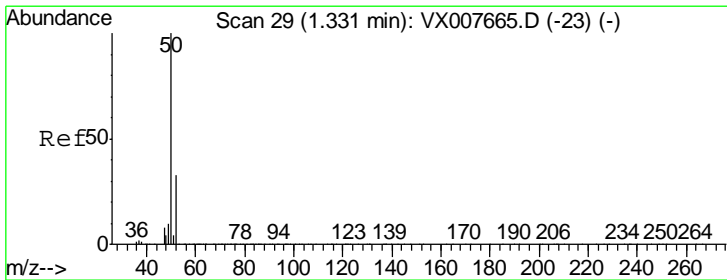
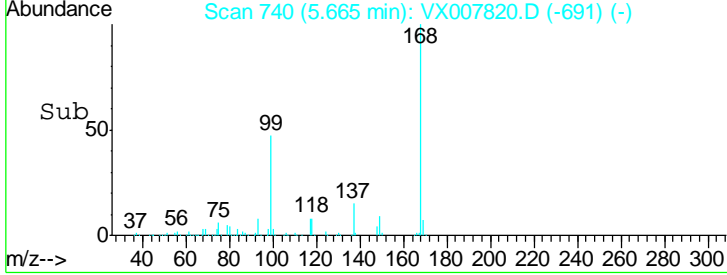
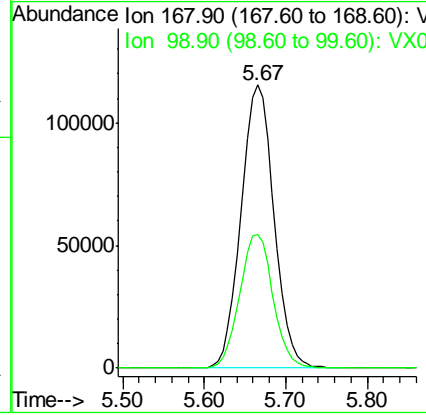
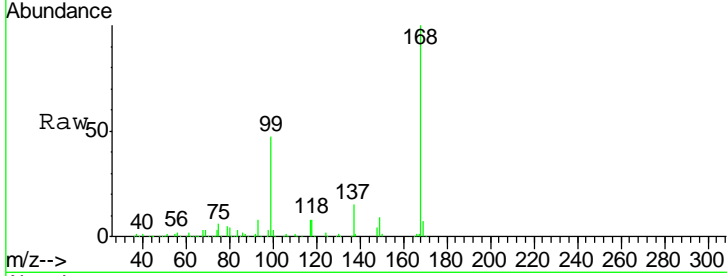




#1
 Pentafluorobenzene
 Concen: 50.000 ug/l
 RT: 5.67 min Scan# 740
 Delta R.T. -0.00 min
 Lab File: VX007820.D
 Acq: 04 Mar 2019 19:28

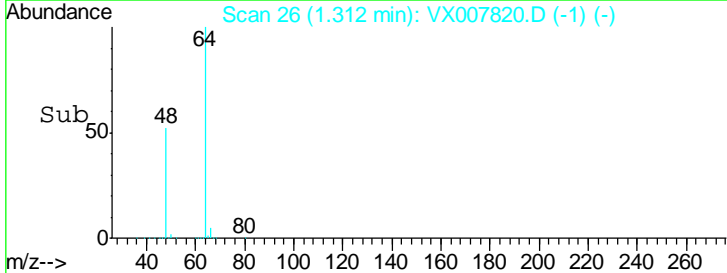
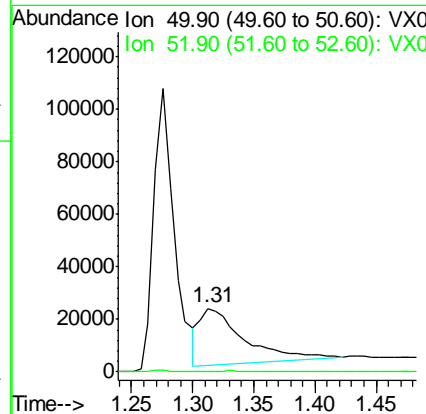
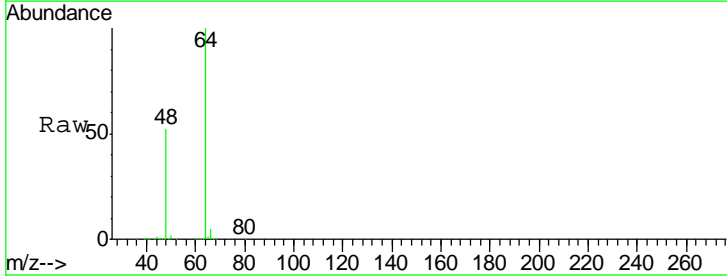
Instrument : MSVOA_X
 ClientSampled : TP-4-B

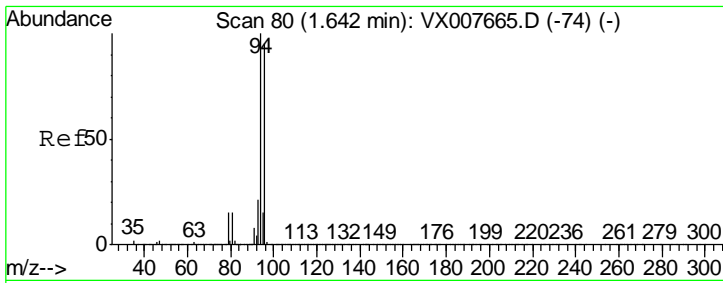
Tgt Ion	Resp	Lower	Upper
168	100		
99	47.3	37.9	56.9



#3
 Chloromethane
 Concen: 16.797 ug/l
 RT: 1.31 min Scan# 26
 Delta R.T. -0.02 min
 Lab File: VX007820.D
 Acq: 04 Mar 2019 19:28

Tgt Ion	Resp	Lower	Upper
50	100		
52	0.4	26.1	39.1#

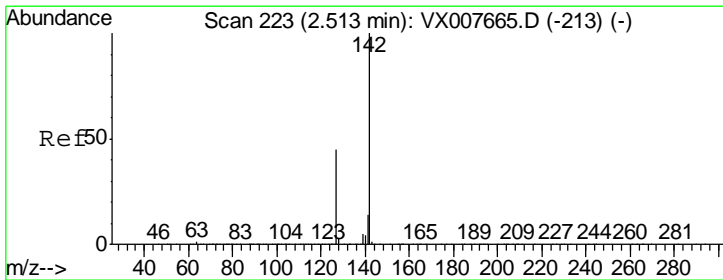
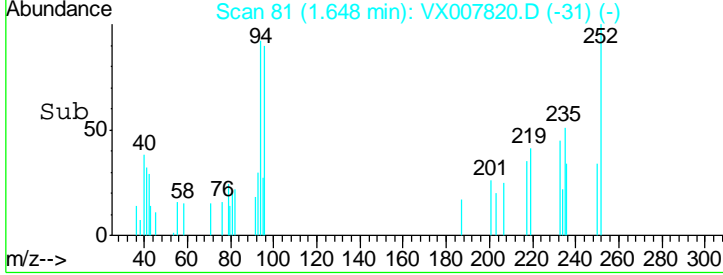
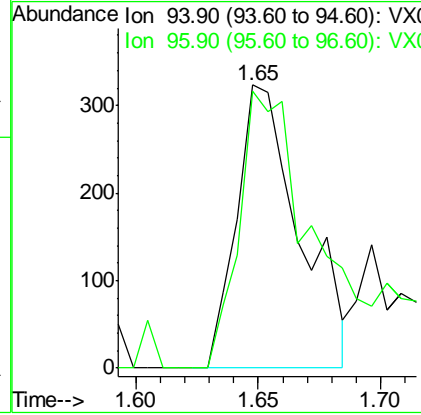
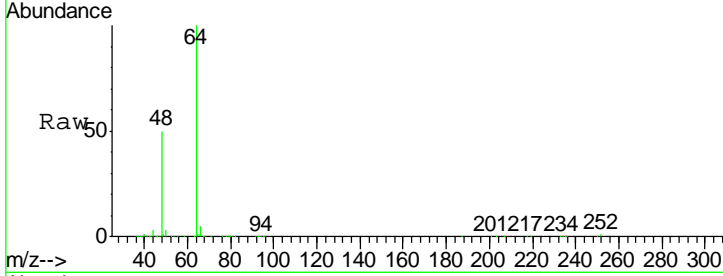




#5
 Bromomethane
 Concen: Below Cal
 RT: 1.65 min Scan# 81
 Delta R.T. 0.01 min
 Lab File: VX007820.D
 Acq: 04 Mar 2019 19:28

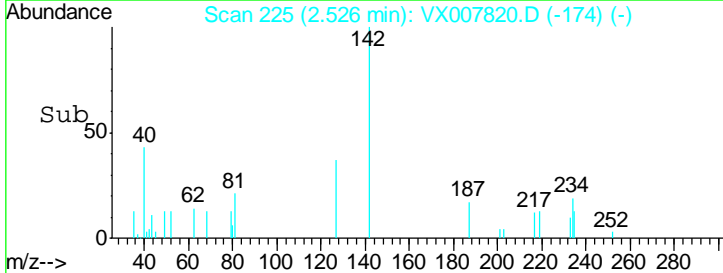
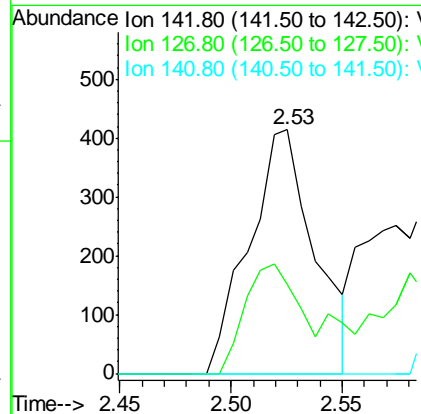
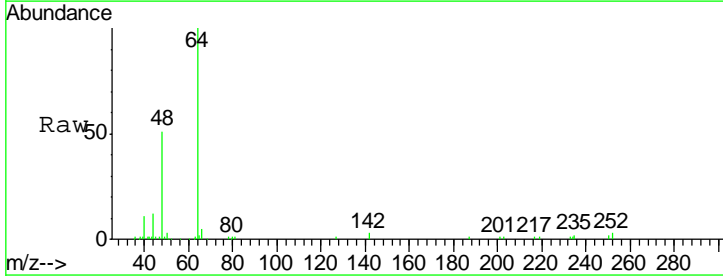
Instrument :
 MSVOA_X
 ClientSampled :
 TP-4-B

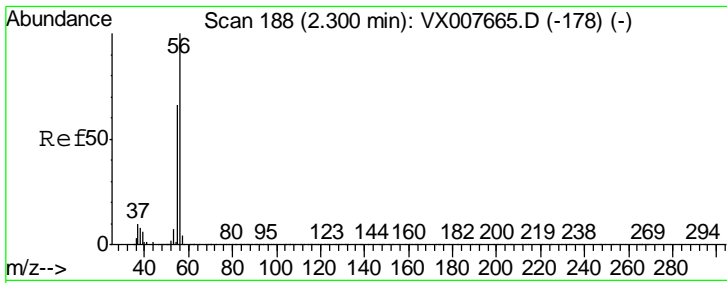
Tgt Ion	Resp	Lower	Upper
94	100		
96	98.1	73.9	110.9



#10
 Methyl Iodide
 Concen: 0.215 ug/l
 RT: 2.53 min Scan# 225
 Delta R.T. 0.01 min
 Lab File: VX007820.D
 Acq: 04 Mar 2019 19:28

Tgt Ion	Resp	Lower	Upper
142	100		
127	37.7	33.7	50.5
141	0.0	11.3	16.9#

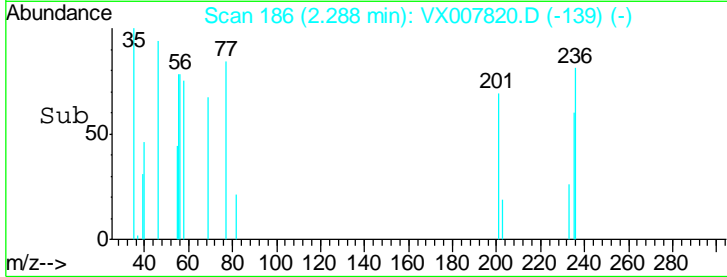
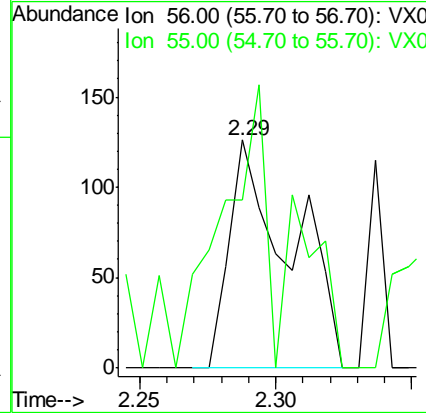
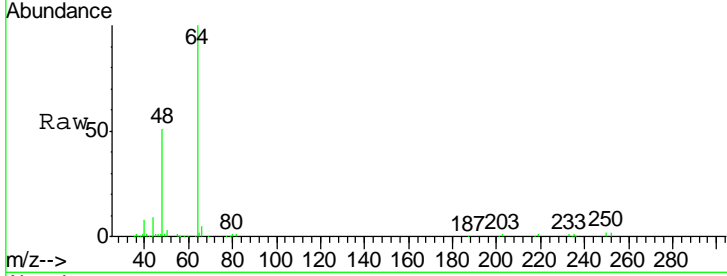




#13
 Acrolein
 Concen: 0.290 ug/l
 RT: 2.29 min Scan# 186
 Delta R.T. -0.01 min
 Lab File: VX007820.D
 Acq: 04 Mar 2019 19:28

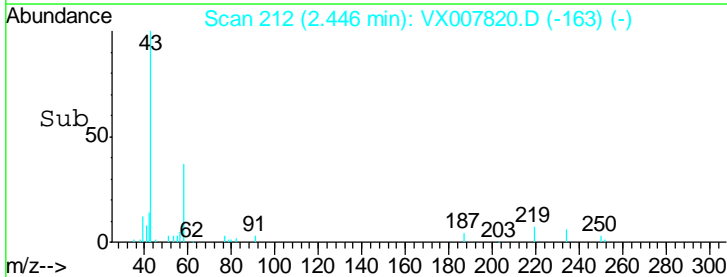
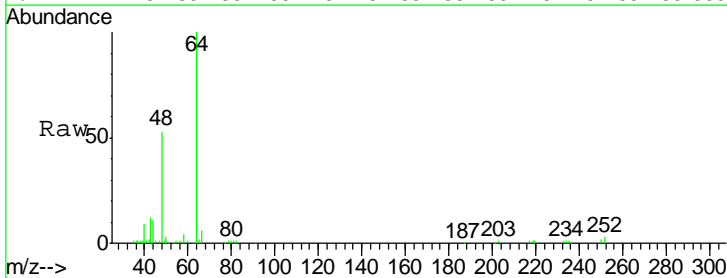
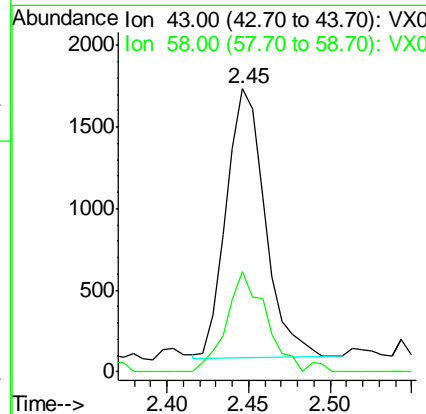
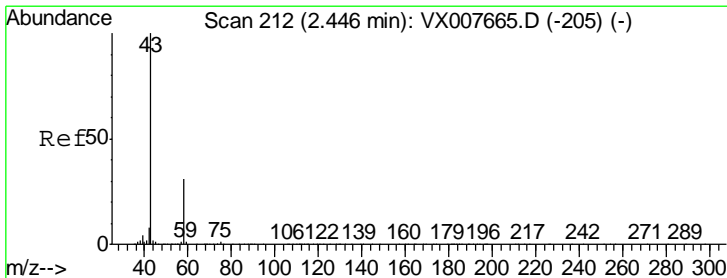
Instrument : MSVOA_X
 ClientSampled : TP-4-B

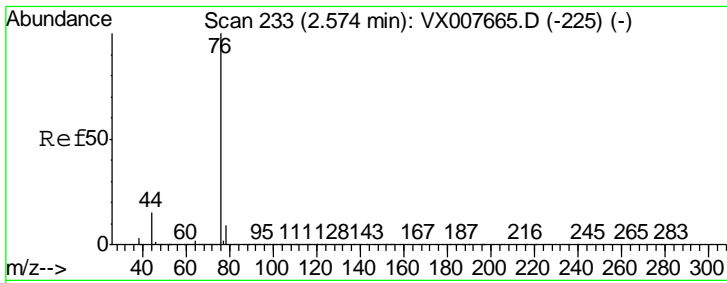
Tgt Ion: 56 Resp: 196
 Ion Ratio Lower Upper
 56 100
 55 95.4 56.9 85.3#



#16
 Acetone
 Concen: 1.545 ug/l
 RT: 2.45 min Scan# 212
 Delta R.T. -0.00 min
 Lab File: VX007820.D
 Acq: 04 Mar 2019 19:28

Tgt Ion: 43 Resp: 2753
 Ion Ratio Lower Upper
 43 100
 58 37.4 24.9 37.3#

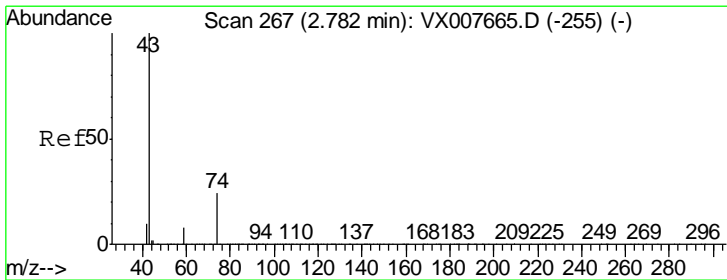
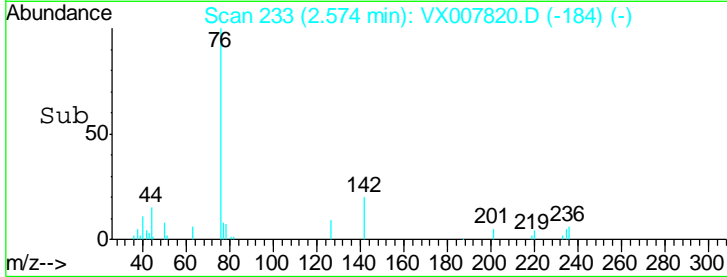
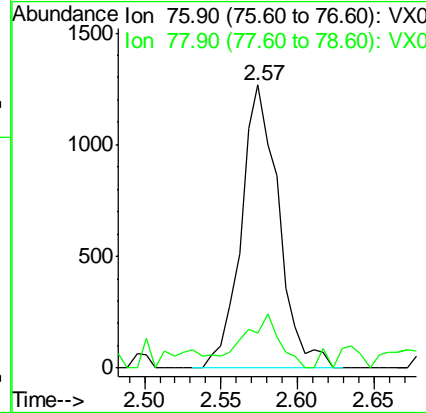
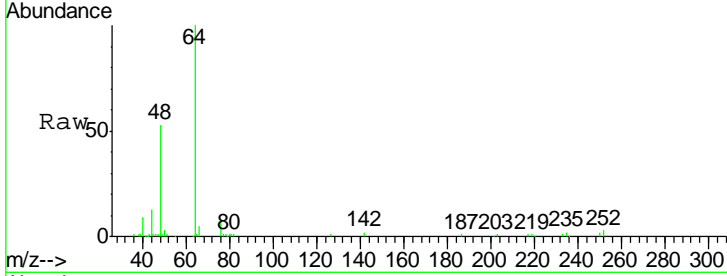




#17
 Carbon Disulfide
 Concen: 0.275 ug/l
 RT: 2.57 min Scan# 233
 Delta R.T. -0.00 min
 Lab File: VX007820.D
 Acq: 04 Mar 2019 19:28

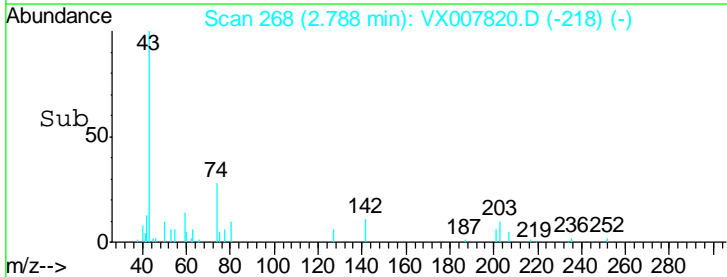
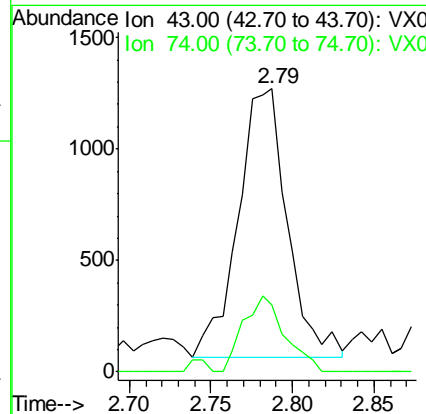
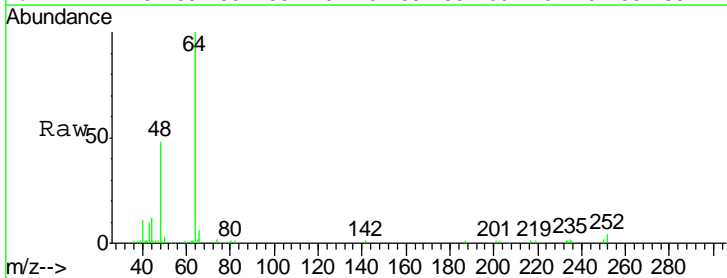
Instrument : MSVOA_X
 ClientSampleId : TP-4-B

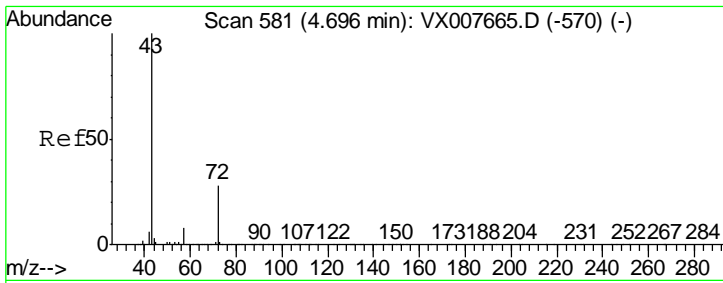
Tgt Ion	Resp	Lower	Upper
76	100		
78	5.7	7.1	10.7#



#18
 Methyl Acetate
 Concen: 0.649 ug/l
 RT: 2.79 min Scan# 268
 Delta R.T. 0.01 min
 Lab File: VX007820.D
 Acq: 04 Mar 2019 19:28

Tgt Ion	Resp	Lower	Upper
43	100		
74	24.1	19.4	29.2

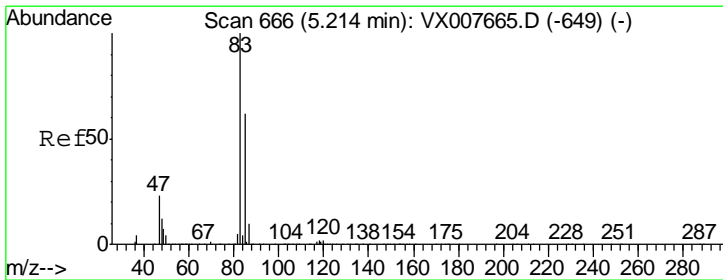
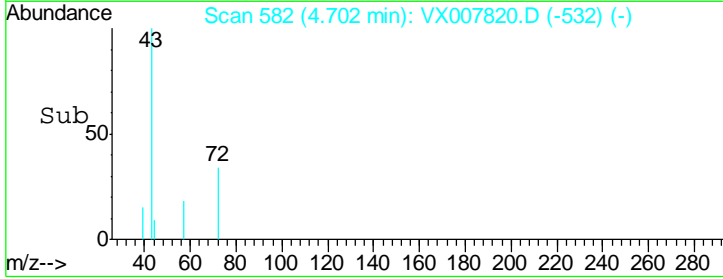
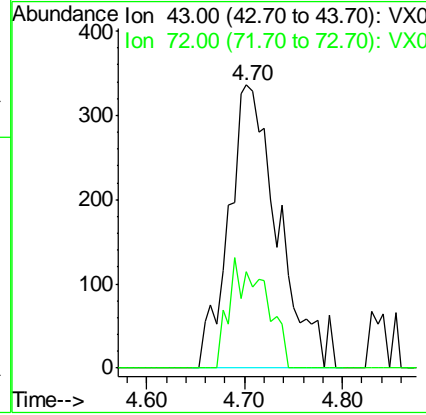
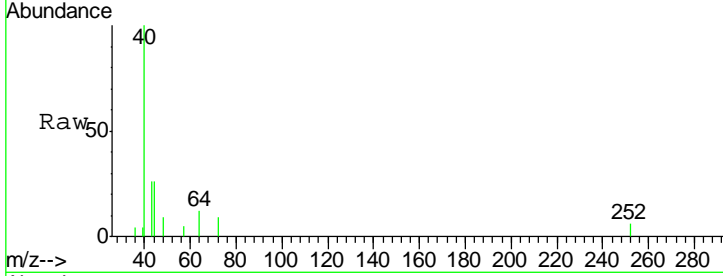




#25
 2-Butanone
 Concen: 0.437 ug/l
 RT: 4.70 min Scan# 582
 Delta R.T. 0.01 min
 Lab File: VX007820.D
 Acq: 04 Mar 2019 19:28

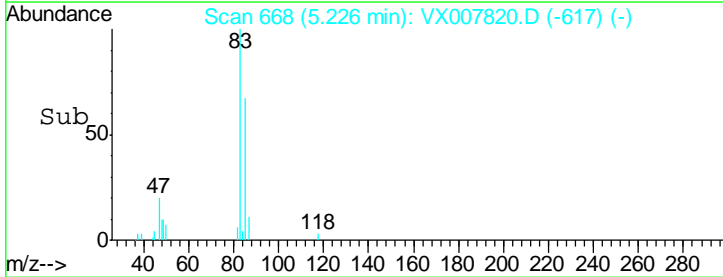
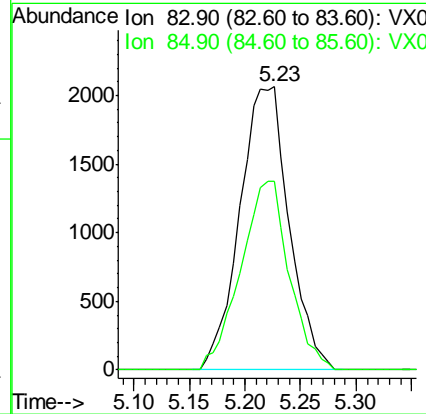
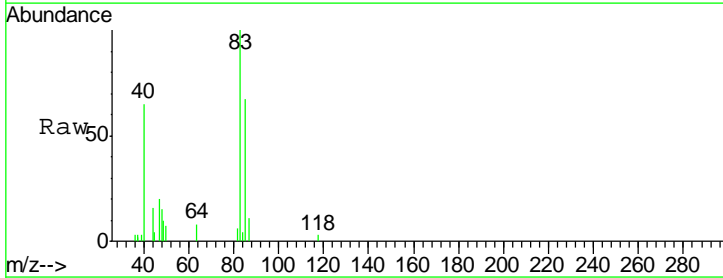
Instrument :
 MSVOA_X
 ClientSampled :
 TP-4-B

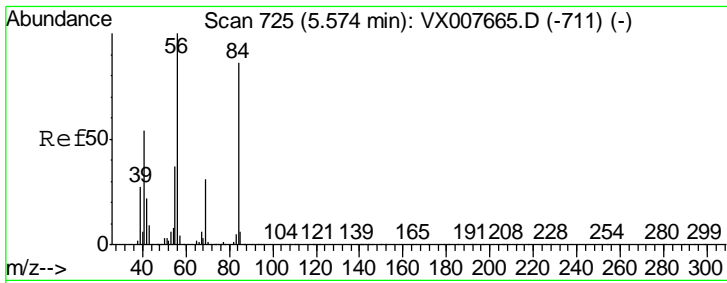
Tgt Ion: 43 Resp: 1187
 Ion Ratio Lower Upper
 43 100
 72 33.9 22.2 33.2#



#30
 Chloroform
 Concen: 1.003 ug/l
 RT: 5.23 min Scan# 668
 Delta R.T. 0.01 min
 Lab File: VX007820.D
 Acq: 04 Mar 2019 19:28

Tgt Ion: 83 Resp: 6361
 Ion Ratio Lower Upper
 83 100
 85 66.8 51.6 77.4

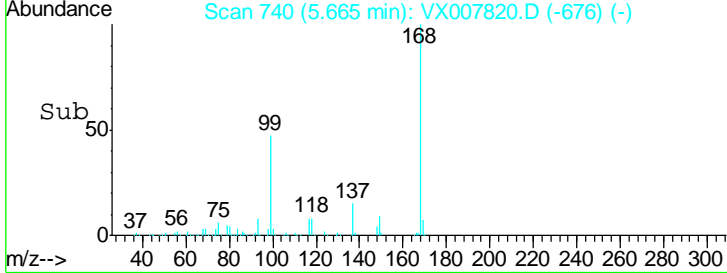
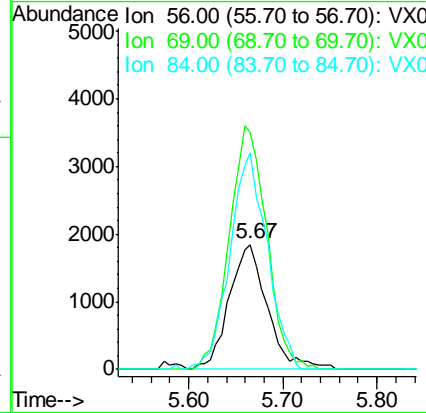
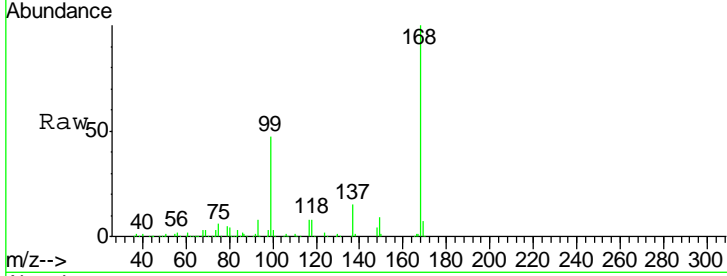




#31
 Cyclohexane
 Concen: 0.940 ug/l
 RT: 5.67 min Scan# 740
 Delta R.T. 0.09 min
 Lab File: VX007820.D
 Acq: 04 Mar 2019 19:28

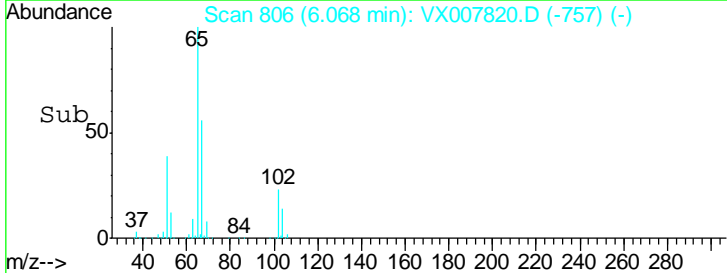
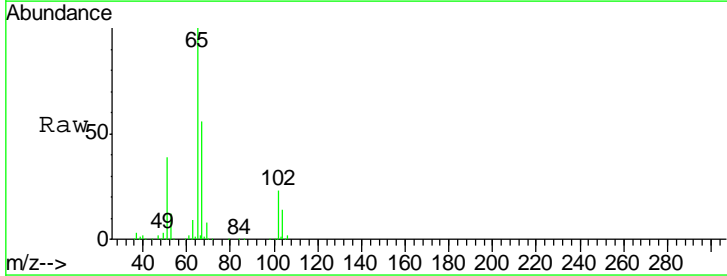
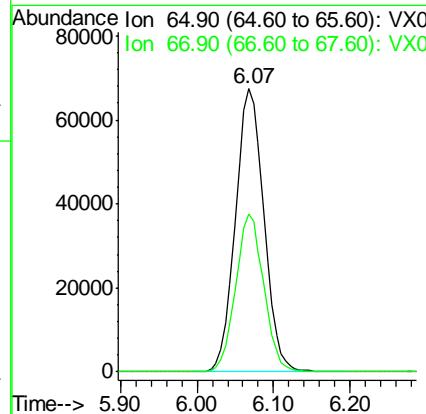
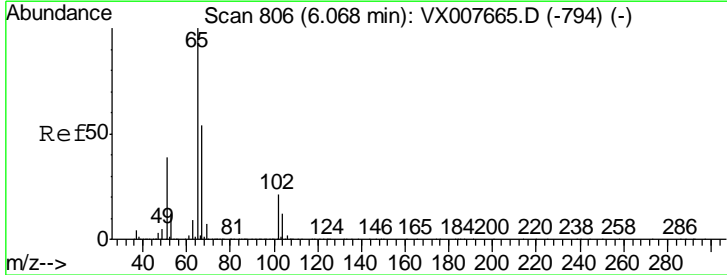
Instrument :
 MSVOA_X
 ClientSampled :
 TP-4-B

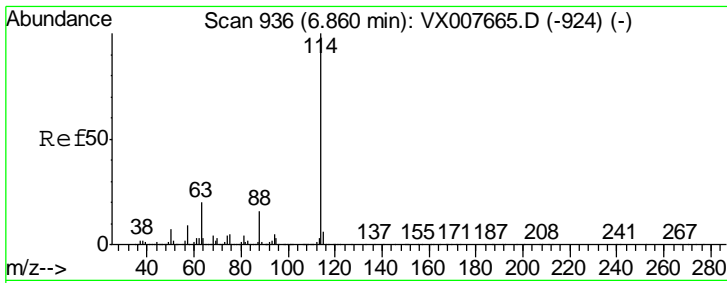
Tgt Ion	Resp	Lower	Upper
56	100		
69	190.6	23.0	34.6#
84	174.2	69.8	104.6#



#33
 1,2-Dichloroethane-d4
 Concen: 43.484 ug/l
 RT: 6.07 min Scan# 806
 Delta R.T. -0.00 min
 Lab File: VX007820.D
 Acq: 04 Mar 2019 19:28

Tgt Ion	Resp	Lower	Upper
65	100		
67	54.8	0.0	108.8

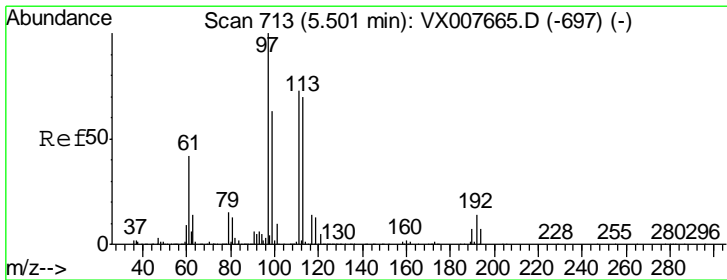
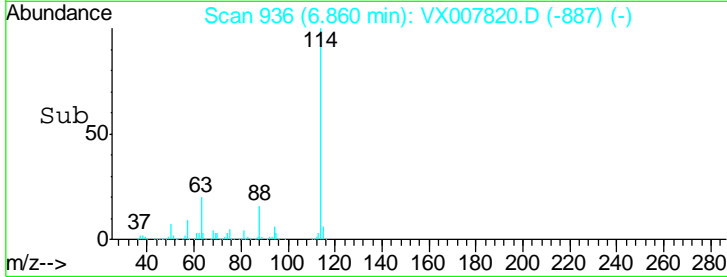
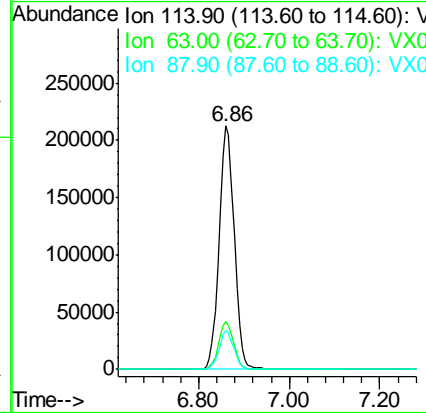
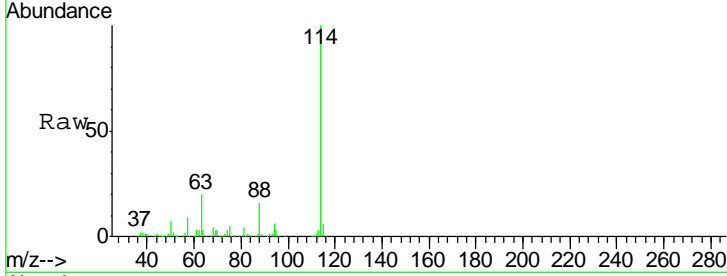




#34
 1,4-Difluorobenzene
 Concen: 50.000 ug/l
 RT: 6.86 min Scan# 936
 Delta R.T. -0.00 min
 Lab File: VX007820.D
 Acq: 04 Mar 2019 19:28

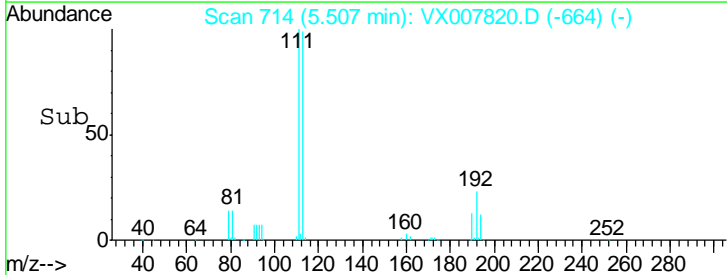
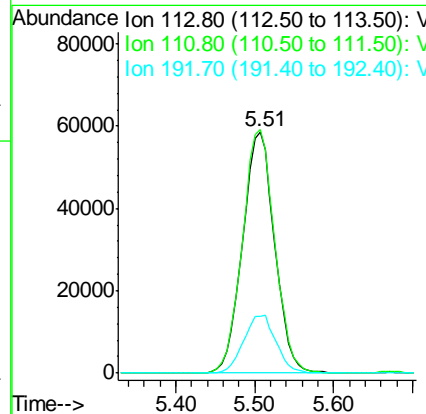
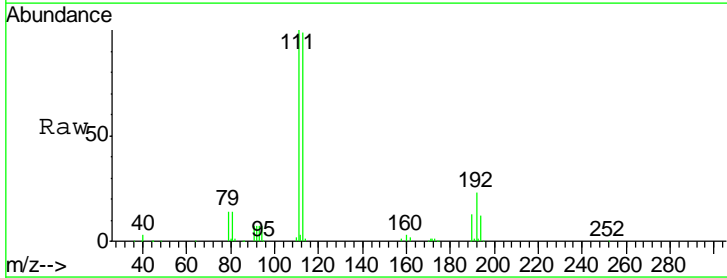
Instrument :
 MSVOA_X
 ClientSampled :
 TP-4-B

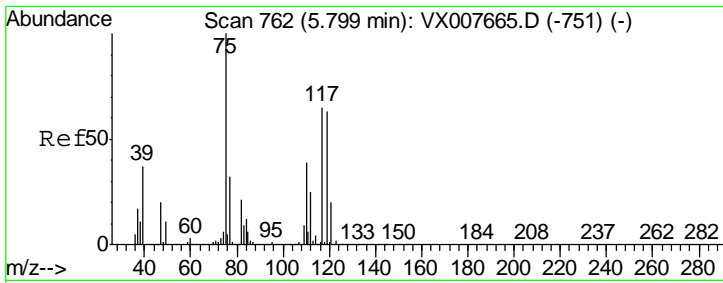
Tgt Ion	Resp	Lower	Upper
114	499046		
63	19.8	0.0	35.6
88	15.8	0.0	29.6



#35
 Dibromofluoromethane
 Concen: 49.602 ug/l
 RT: 5.51 min Scan# 714
 Delta R.T. 0.01 min
 Lab File: VX007820.D
 Acq: 04 Mar 2019 19:28

Tgt Ion	Resp	Lower	Upper
113	165471		
111	101.7	81.8	122.8
192	24.3	18.5	27.7

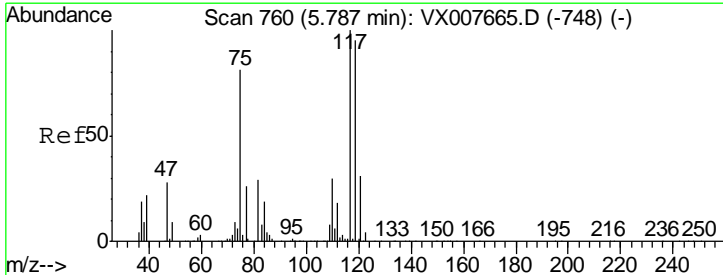
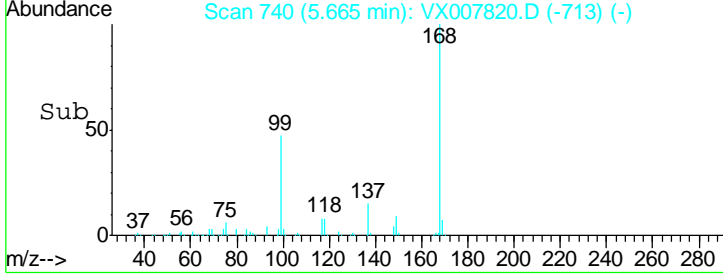
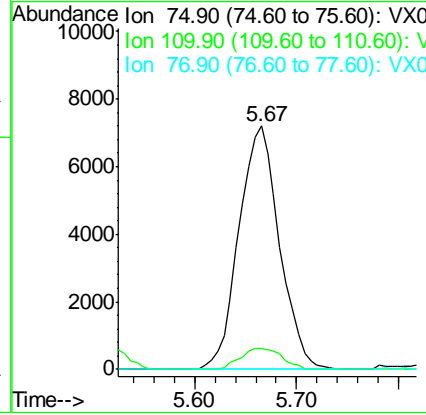
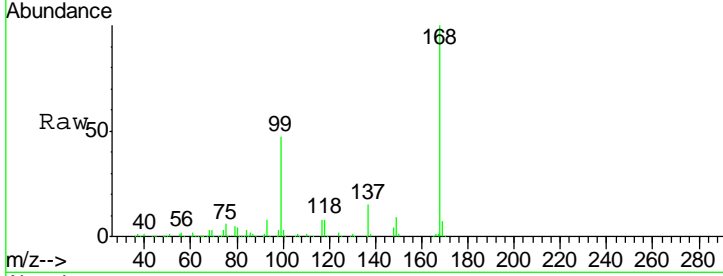




#36
 1,1-Dichloropropene
 Concen: 4.409 ug/l
 RT: 5.67 min Scan# 740
 Delta R.T. -0.13 min
 Lab File: VX007820.D
 Acq: 04 Mar 2019 19:28

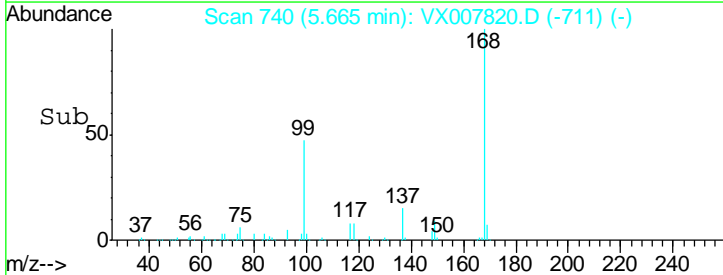
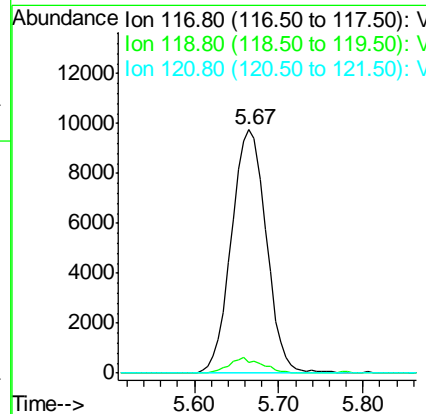
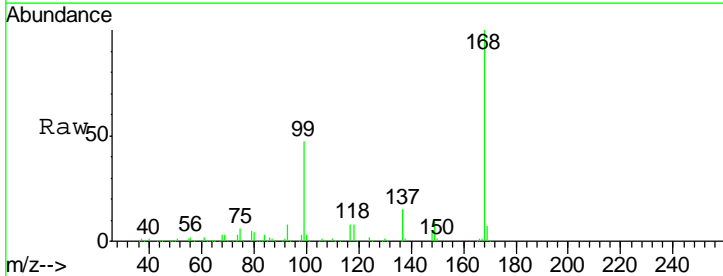
Instrument : MSVOA_X
 ClientSampled : TP-4-B

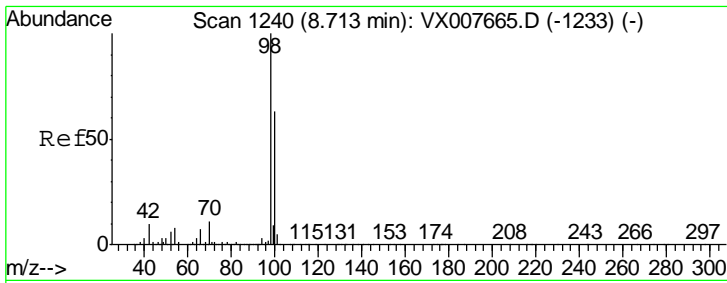
Tgt Ion	Resp	Lower	Upper
75	100		
110	9.0	20.0	59.9#
77	0.0	24.7	37.1#



#38
 Carbon Tetrachloride
 Concen: 6.075 ug/l
 RT: 5.67 min Scan# 740
 Delta R.T. -0.12 min
 Lab File: VX007820.D
 Acq: 04 Mar 2019 19:28

Tgt Ion	Resp	Lower	Upper
117	100		
119	4.4	75.3	112.9#
121	0.0	25.0	37.4#

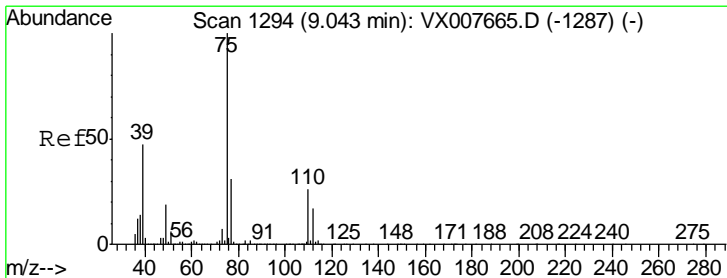
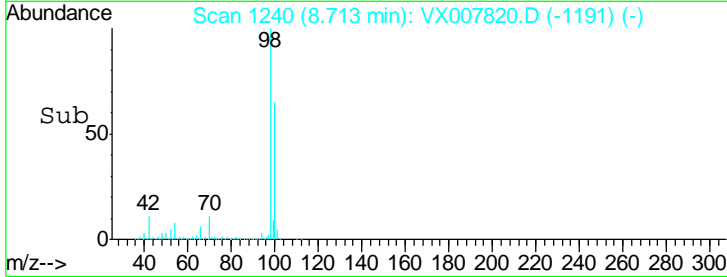
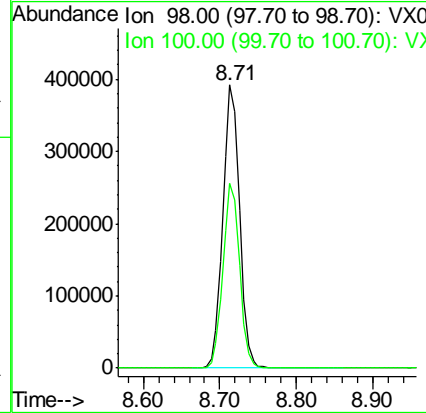
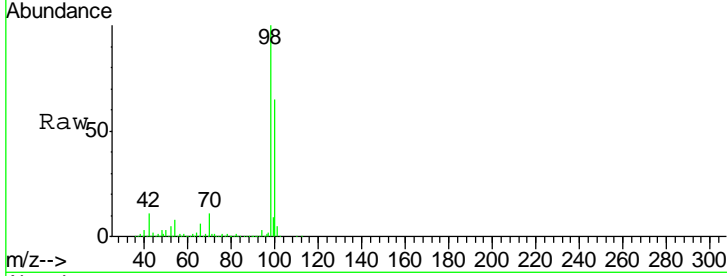




#50
 Toluene-d8
 Concen: 46.500 ug/l
 RT: 8.71 min Scan# 1240
 Delta R.T. -0.00 min
 Lab File: VX007820.D
 Acq: 04 Mar 2019 19:28

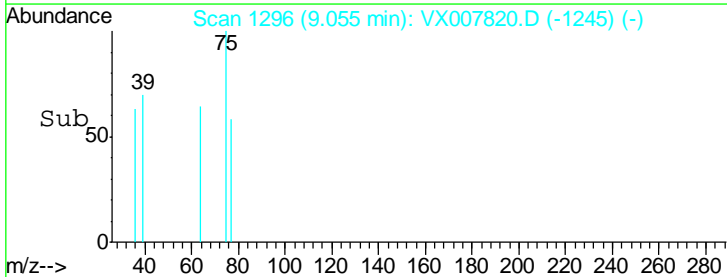
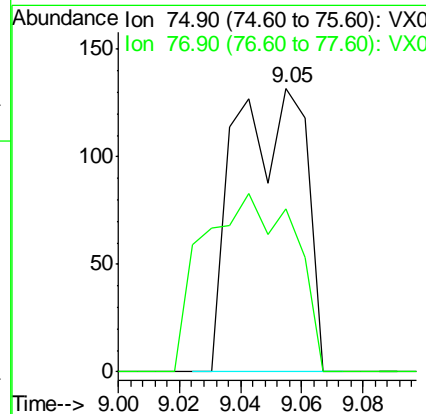
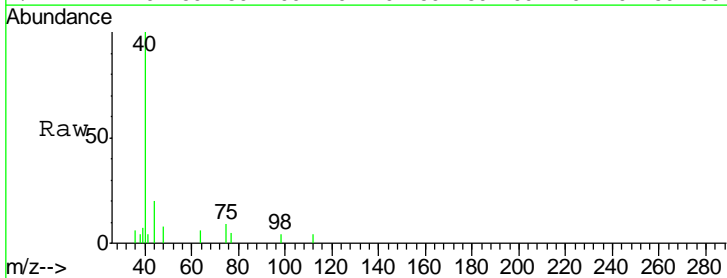
Instrument :
 MSVOA_X
 ClientSampled :
 TP-4-B

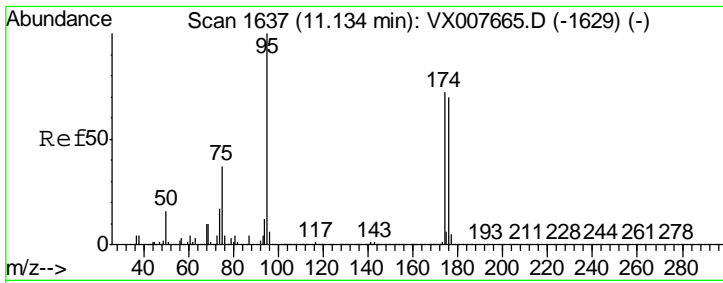
Tgt Ion: 98 Resp: 593873
 Ion Ratio Lower Upper
 98 100
 100 64.7 51.6 77.4



#53
 t-1,3-Dichloropropene
 Concen: 2.840 ug/l
 RT: 9.05 min Scan# 1296
 Delta R.T. 0.01 min
 Lab File: VX007820.D
 Acq: 04 Mar 2019 19:28

Tgt Ion: 75 Resp: 212
 Ion Ratio Lower Upper
 75 100
 77 57.6 25.2 37.8#

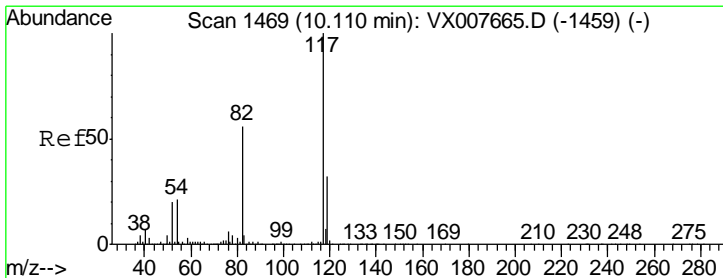
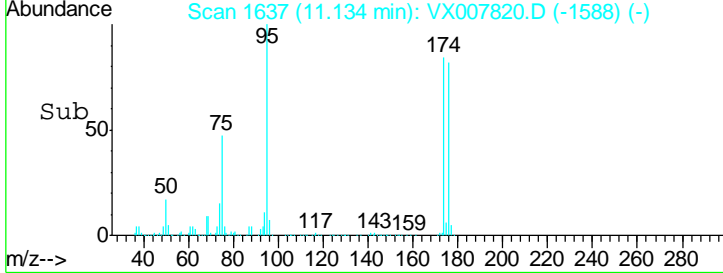
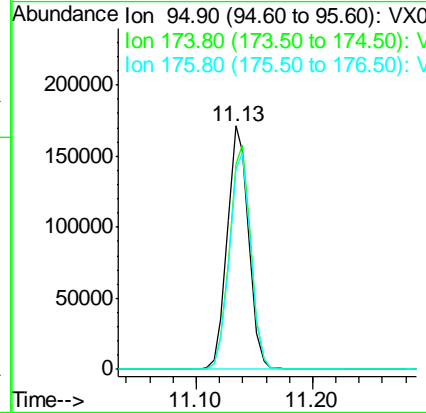
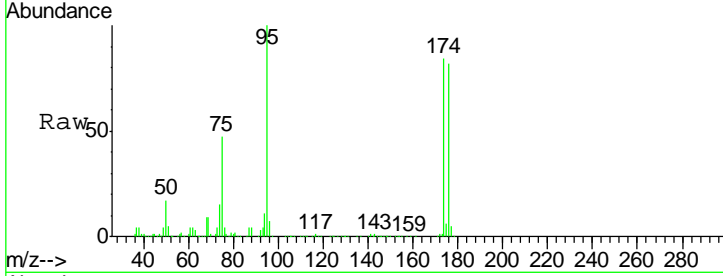




#62
 4-Bromofluorobenzene
 Concen: 45.925 ug/l
 RT: 11.13 min Scan# 1637
 Delta R.T. -0.00 min
 Lab File: VX007820.D
 Acq: 04 Mar 2019 19:28

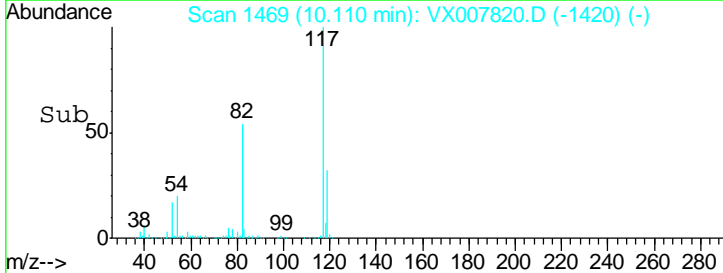
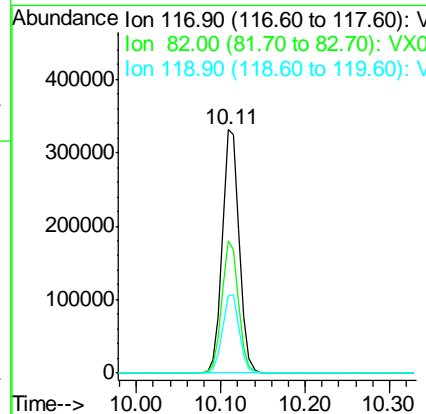
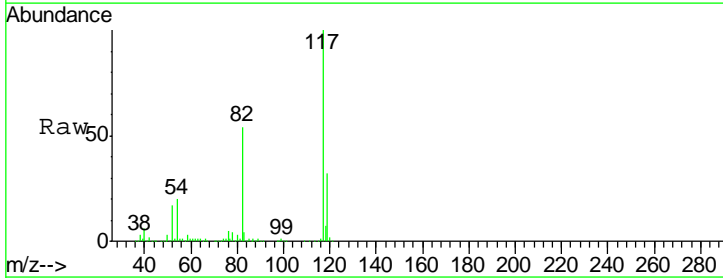
Instrument :
 MSVOA_X
 Client Sampled :
 TP-4-B

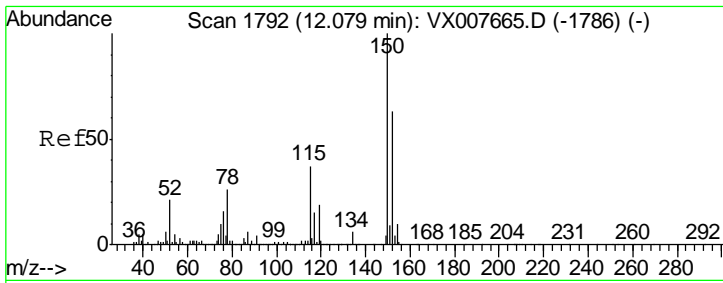
Tgt Ion	Resp	Lower	Upper
95	215277		
174	93.1	0.0	189.2
176	90.3	0.0	186.2



#63
 Chlorobenzene-d5
 Concen: 50.000 ug/l
 RT: 10.11 min Scan# 1469
 Delta R.T. -0.00 min
 Lab File: VX007820.D
 Acq: 04 Mar 2019 19:28

Tgt Ion	Resp	Lower	Upper
117	461613		
82	54.2	42.1	63.1
119	31.8	26.5	39.7

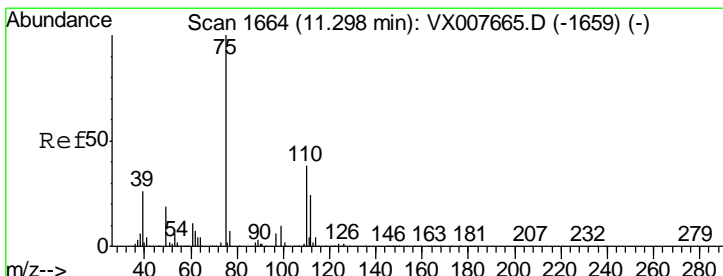
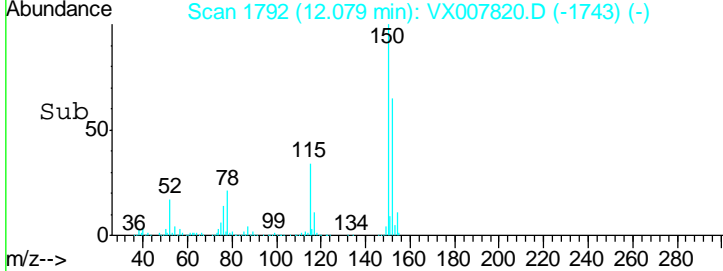
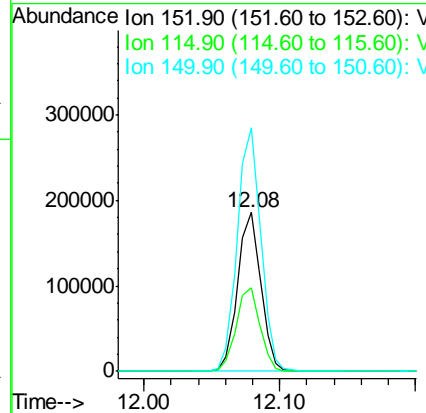
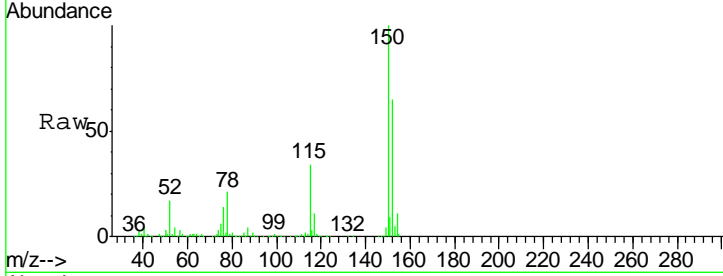




#72
 1,4-Dichlorobenzene-d4
 Concen: 50.000 ug/l
 RT: 12.08 min Scan# 1792
 Delta R.T. -0.00 min
 Lab File: VX007820.D
 Acq: 04 Mar 2019 19:28

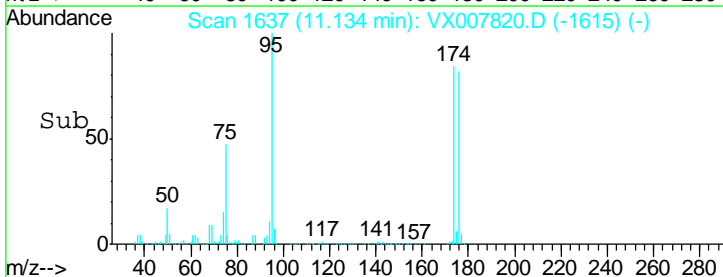
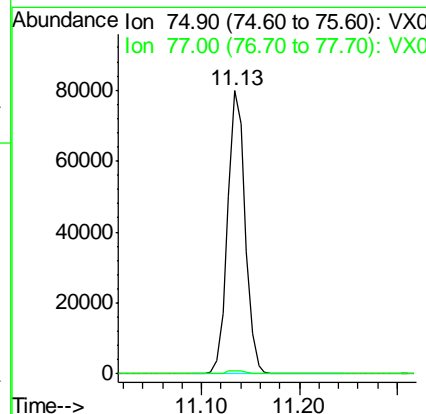
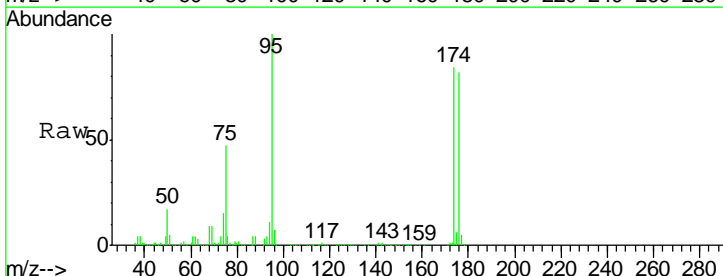
Instrument :
 MSVOA_X
 ClientSampled :
 TP-4-B

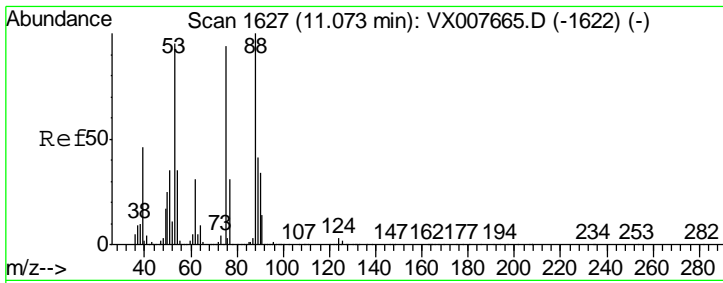
Tgt Ion	Resp	Lower	Upper
152	100		
115	53.9	38.0	114.0
150	155.2	0.0	346.4



#76
 1,2,3-Trichloropropane
 Concen: 20.992 ug/l
 RT: 11.13 min Scan# 1637
 Delta R.T. -0.16 min
 Lab File: VX007820.D
 Acq: 04 Mar 2019 19:28

Tgt Ion	Resp	Lower	Upper
75	100		
77	1.2	23.0	69.0#





#81
 trans-1,4-Dichloro-2-butene
 Concen: 55.877 ug/l
 RT: 11.13 min Scan# 1637
 Delta R.T. 0.06 min
 Lab File: VX007820.D
 Acq: 04 Mar 2019 19:28

Instrument :
 MSVOA_X
 ClientSampled :
 TP-4-B

Tot Ion	Ratio	Lower	Upper
75	100		
53	0.1	81.0	121.6#
89	0.0	41.4	62.0#

