

Data Path : Z:\voasrv\HPCHEM1\MSVOA_X\Data\VX030421\
 Data File : VX020972.D
 Acq On : 02 Mar 2021 18:18
 Operator : JC/MD
 Sample : M1544-04
 Misc : 5.0mL/MSVOA_X/WATER
 ALS Vial : 8 Sample Multiplier: 1

Instrument :
 MSVOA_X
 ClientSampled :

Quant Time: Mar 03 01:17:24 2021
 Quant Method : Z:\voasrv\HPCHEM1\MSVOA_X\Method\82X022421W.M
 Quant Title : SW846 8260
 QLast Update : Wed Feb 24 13:50:55 2021
 Response via : Initial Calibration

Compound	R.T.	QIon	Response	Conc	Units	Dev(Min)

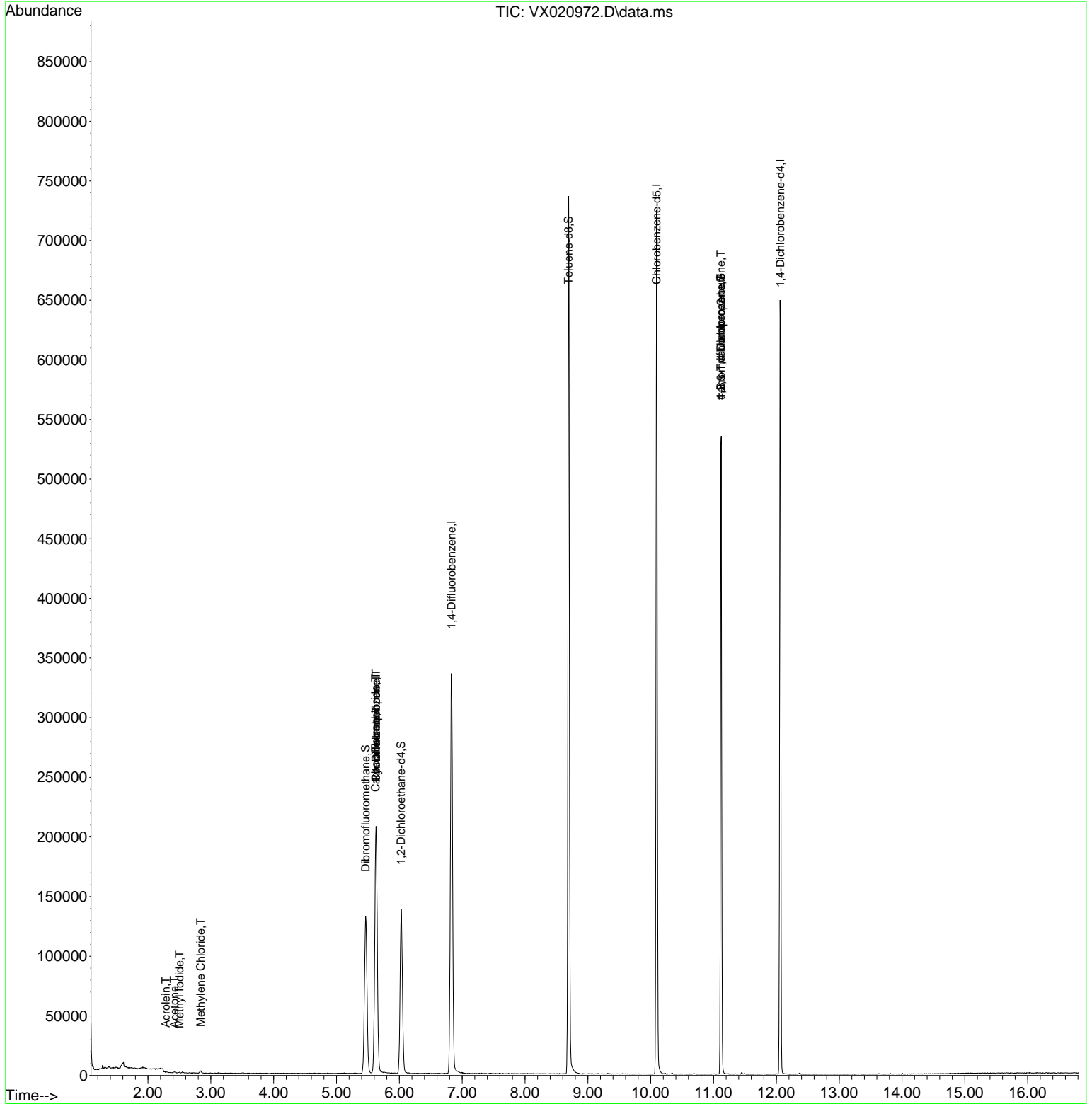
Internal Standards						
1) Pentafluorobenzene	5.629	168	204181	50.00	ug/l	0.00
34) 1,4-Difluorobenzene	6.829	114	365392	50.00	ug/l	0.00
63) Chlorobenzene-d5	10.094	117	344868	50.00	ug/l	0.00
72) 1,4-Dichlorobenzene-d4	12.065	152	146417	50.00	ug/l	0.00
System Monitoring Compounds						
33) 1,2-Dichloroethane-d4	6.029	65	128622	46.64	ug/l	0.00
Spiked Amount	50.000	Range 61 - 141	Recovery =	93.28%		
35) Dibromofluoromethane	5.464	113	115916	52.21	ug/l	0.00
Spiked Amount	50.000	Range 69 - 133	Recovery =	104.42%		
50) Toluene-d8	8.694	98	454890	52.55	ug/l	0.00
Spiked Amount	50.000	Range 65 - 126	Recovery =	105.10%		
62) 4-Bromofluorobenzene	11.118	95	156326	48.84	ug/l	0.00
Spiked Amount	50.000	Range 58 - 135	Recovery =	97.68%		
Target Compounds						
						Qvalue
5) Bromomethane	1.646	94	442	Below Cal		82
10) Methyl Iodide	2.499	142	654	0.22	ug/l #	86
13) Acrolein	2.281	56	77	0.20	ug/l #	1
16) Acetone	2.416	43	638	0.56	ug/l	91
20) Methylene Chloride	2.840	84	949	0.35	ug/l	91
31) Cyclohexane	5.629	56	4040	1.01	ug/l #	1
36) 1,1-Dichloropropene	5.629	75	15316	4.41	ug/l #	48
38) Carbon Tetrachloride	5.623	117	19487	5.79	ug/l #	17
76) 1,2,3-Trichloropropane	11.118	75	73925	23.47	ug/l #	39
81) trans-1,4-Dichloro-2-b...	11.118	75	73925	51.96	ug/l #	12

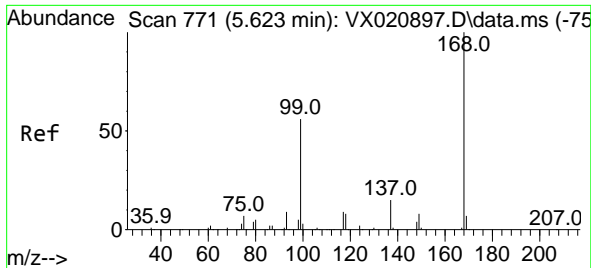
(#) = qualifier out of range (m) = manual integration (+) = signals summed

Data Path : Z:\voasrv\HPCHEM1\MSVOA_X\Data\VX030421\
 Data File : VX020972.D
 Acq On : 02 Mar 2021 18:18
 Operator : JC/MD
 Sample : M1544-04
 Misc : 5.0mL/MSVOA_X/WATER
 ALS Vial : 8 Sample Multiplier: 1

Instrument :
 MSVOA_X
 ClientSampled :

Quant Time: Mar 03 01:17:24 2021
 Quant Method : Z:\voasrv\HPCHEM1\MSVOA_X\Method\82X022421W.M
 Quant Title : SW846 8260
 QLast Update : Wed Feb 24 13:50:55 2021
 Response via : Initial Calibration

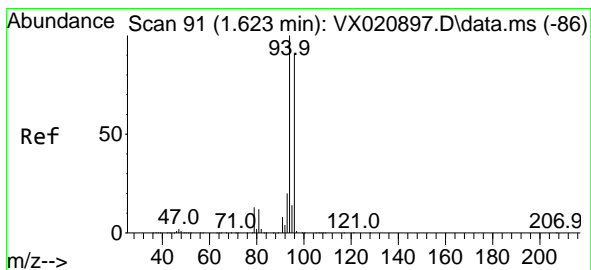
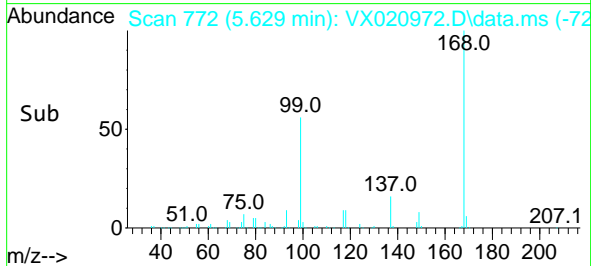
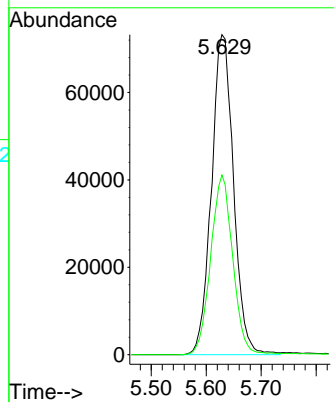
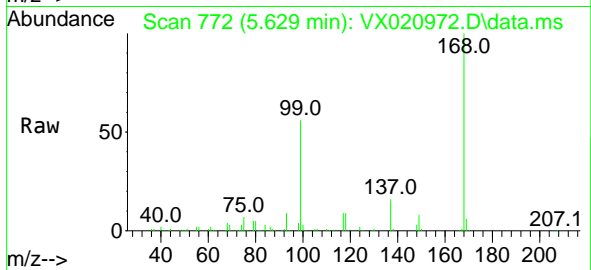




#1
 Pentafluorobenzene
 Concen: 50.00 ug/l
 RT: 5.629 min Scan# 772
 Delta R.T. 0.006 min
 Lab File: VX020972.D
 Acq: 02 Mar 2021 18:18

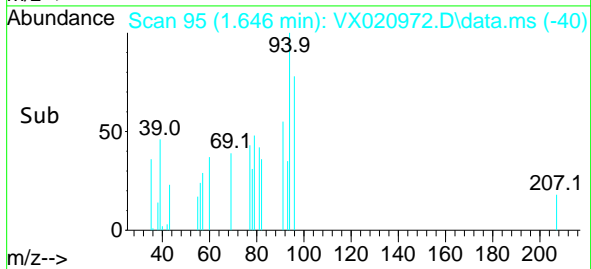
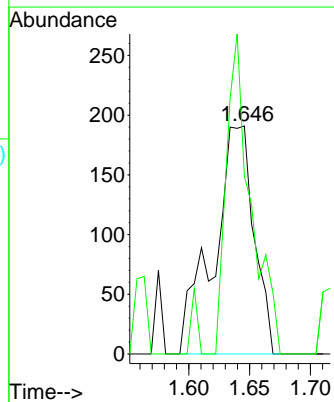
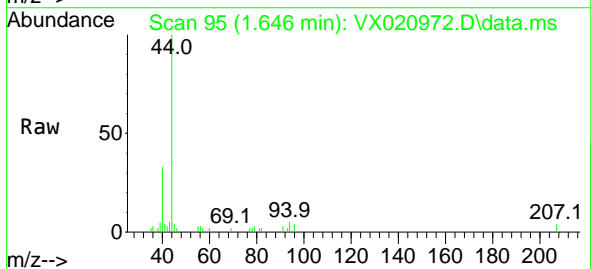
Instrument :
 MSVOA_X
 ClientSampled :

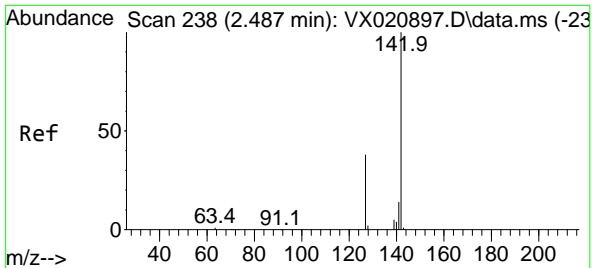
Tgt Ion:168 Resp: 204181
 Ion Ratio Lower Upper
 168 100
 99 56.2 45.8 68.6



#5
 Bromomethane
 Concen: Below Cal
 RT: 1.646 min Scan# 95
 Delta R.T. 0.023 min
 Lab File: VX020972.D
 Acq: 02 Mar 2021 18:18

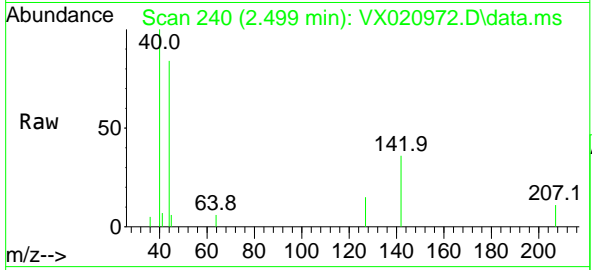
Tgt Ion: 94 Resp: 442
 Ion Ratio Lower Upper
 94 100
 96 78.0 76.4 114.6





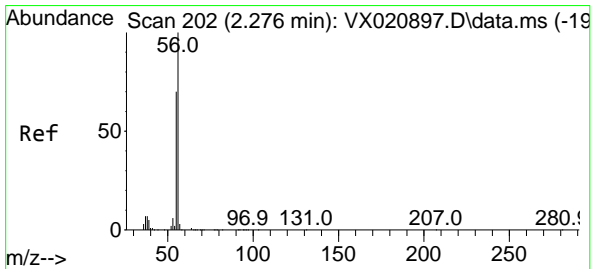
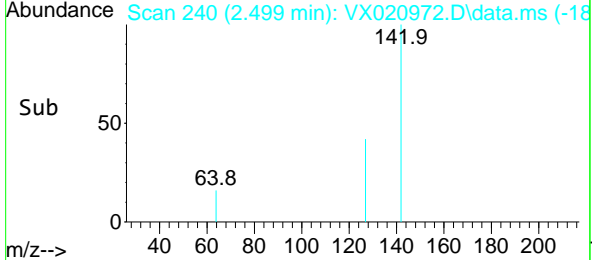
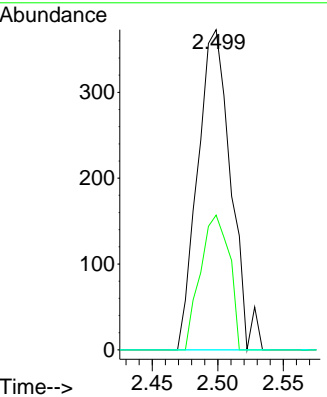
#10
Methyl Iodide
Concen: 0.22 ug/l
RT: 2.499 min Scan# 240
Delta R.T. 0.011 min
Lab File: VX020972.D
Acq: 02 Mar 2021 18:18

Instrument :
MSVOA_X
ClientSampled :

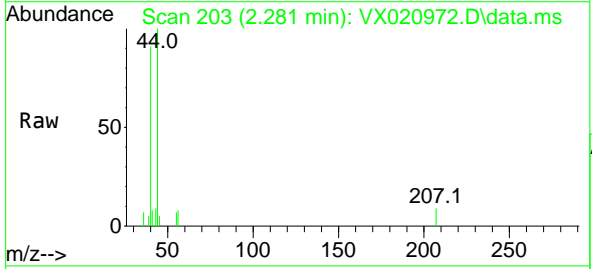


Tgt Ion:142 Resp: 654

Ion	Ratio	Lower	Upper
142	100		
127	36.9	33.3	49.9
141	0.0	11.4	17.0#

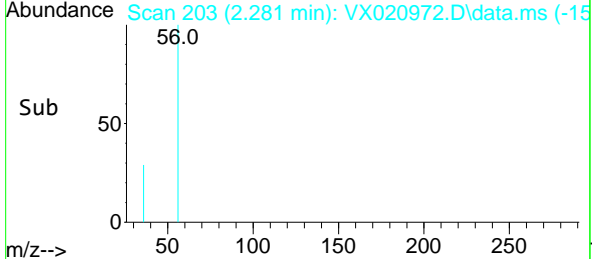
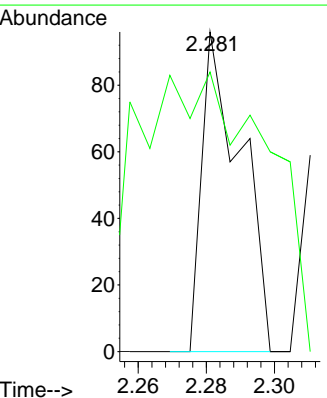


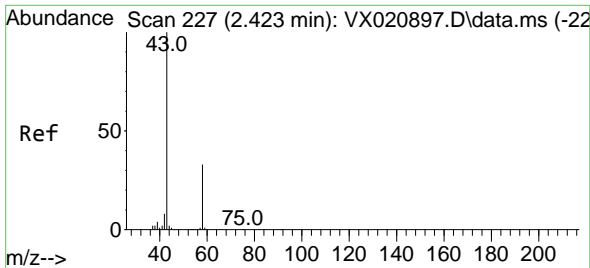
#13
Acrolein
Concen: 0.20 ug/l
RT: 2.281 min Scan# 203
Delta R.T. 0.005 min
Lab File: VX020972.D
Acq: 02 Mar 2021 18:18



Tgt Ion: 56 Resp: 77

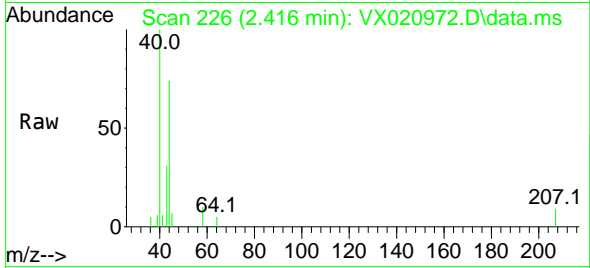
Ion	Ratio	Lower	Upper
56	100		
55	285.7	56.4	84.6#



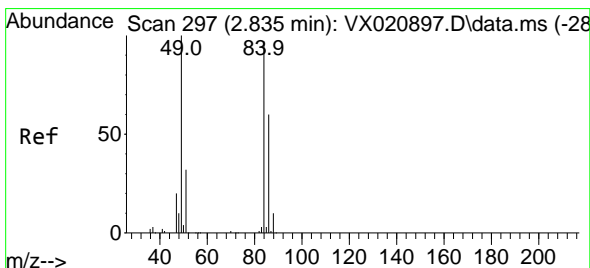
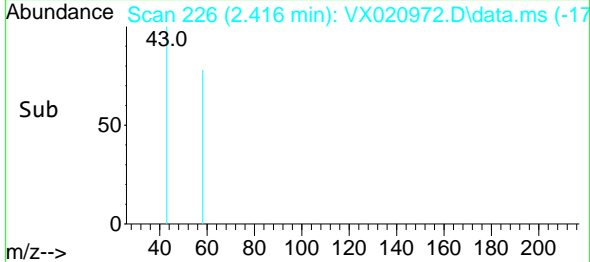
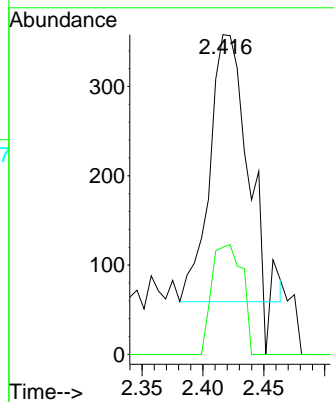


#16
 Acetone
 Concen: 0.56 ug/l
 RT: 2.416 min Scan# 226
 Delta R.T. -0.006 min
 Lab File: VX020972.D
 Acq: 02 Mar 2021 18:18

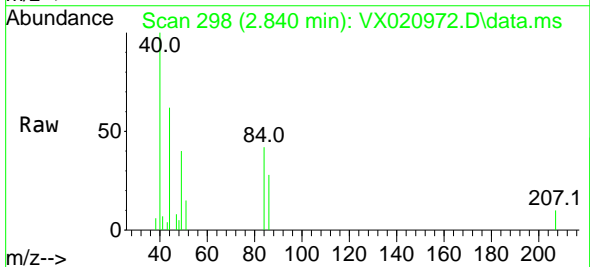
Instrument :
 MSVOA_X
 ClientSampled :



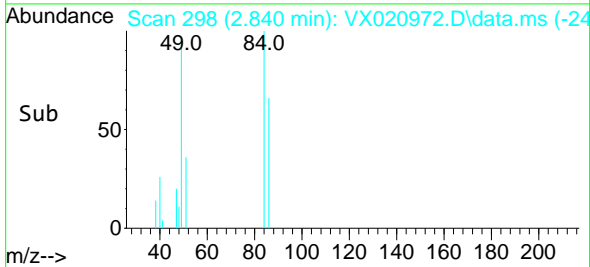
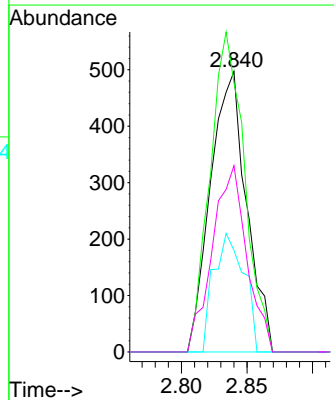
Tgt Ion: 43 Resp: 638
 Ion Ratio Lower Upper
 43 100
 58 40.1 27.8 41.8

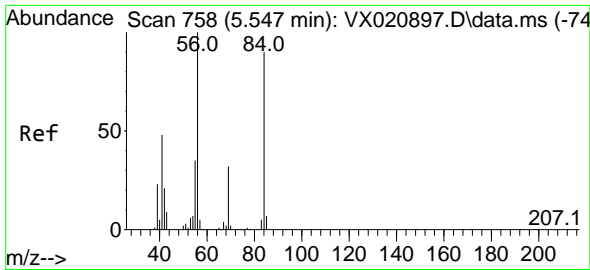


#20
 Methylene Chloride
 Concen: 0.35 ug/l
 RT: 2.840 min Scan# 298
 Delta R.T. 0.005 min
 Lab File: VX020972.D
 Acq: 02 Mar 2021 18:18



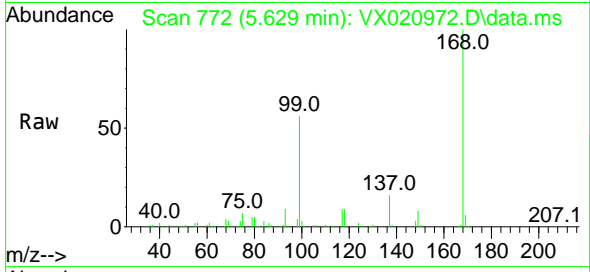
Tgt Ion: 84 Resp: 949
 Ion Ratio Lower Upper
 84 100
 49 96.0 88.6 132.8
 51 36.2 27.0 40.6
 86 66.4 50.3 75.5



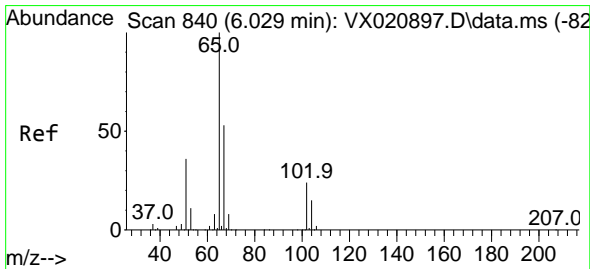
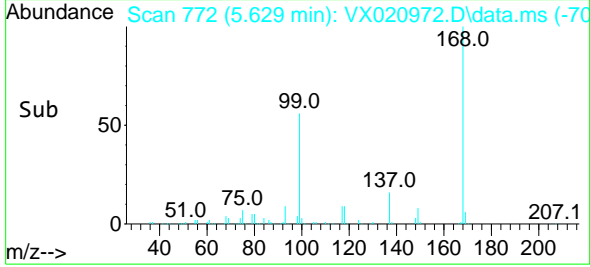
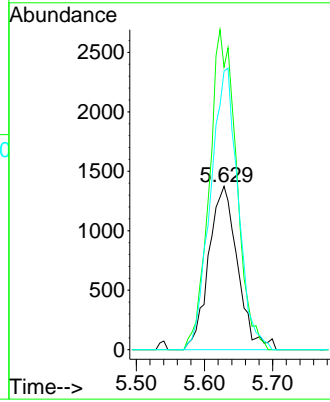


#31
 Cyclohexane
 Concen: 1.01 ug/l
 RT: 5.629 min Scan# 772
 Delta R.T. 0.082 min
 Lab File: VX020972.D
 Acq: 02 Mar 2021 18:18

Instrument :
 MSVOA_X
 ClientSampled :

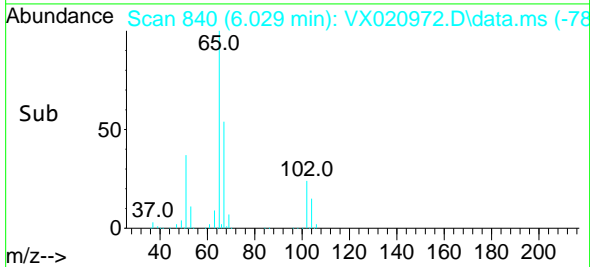
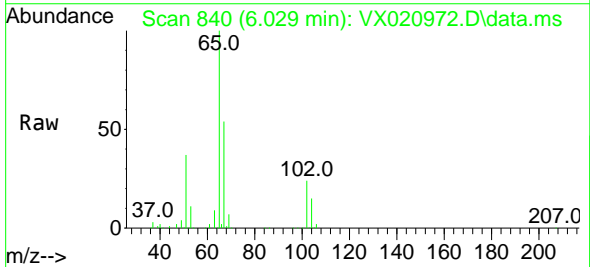
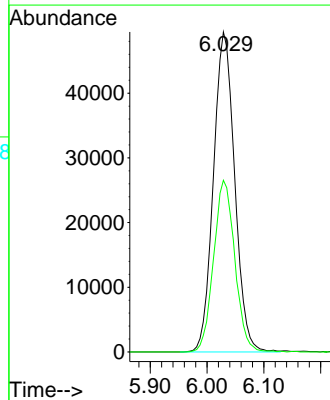


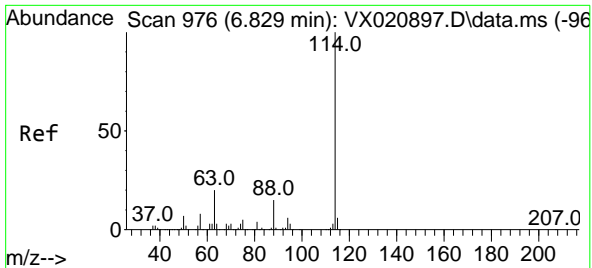
Tgt Ion: 56 Resp: 4040
 Ion Ratio Lower Upper
 56 100
 69 173.1 25.3 37.9#
 84 170.6 71.4 107.0#



#33
 1,2-Dichloroethane-d4
 Concen: 46.64 ug/l
 RT: 6.029 min Scan# 840
 Delta R.T. -0.000 min
 Lab File: VX020972.D
 Acq: 02 Mar 2021 18:18

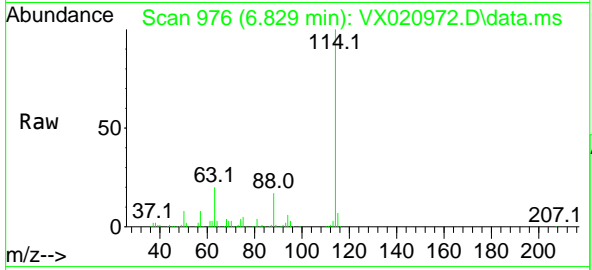
Tgt Ion: 65 Resp: 128622
 Ion Ratio Lower Upper
 65 100
 67 53.5 0.0 105.4





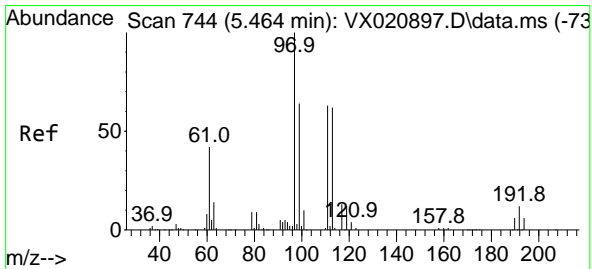
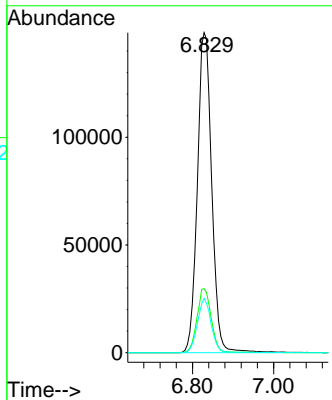
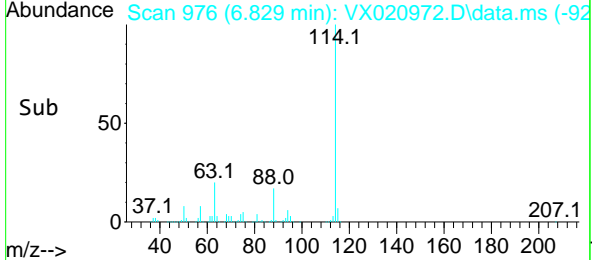
#34
 1,4-Difluorobenzene
 Concen: 50.00 ug/l
 RT: 6.829 min Scan# 976
 Delta R.T. -0.000 min
 Lab File: VX020972.D
 Acq: 02 Mar 2021 18:18

Instrument :
 MSVOA_X
 ClientSampled :

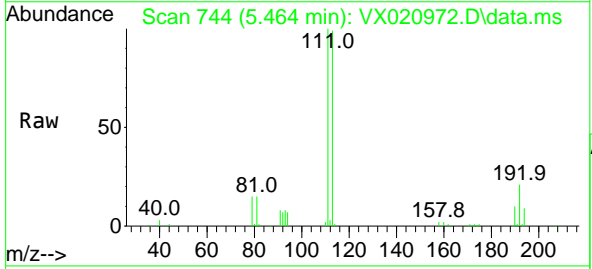


Tgt Ion:114 Resp: 365392

Ion	Ratio	Lower	Upper
114	100		
63	20.0	0.0	40.8
88	16.9	0.0	32.8

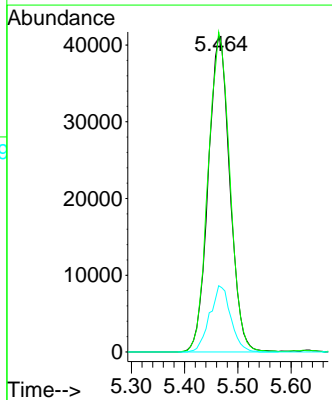
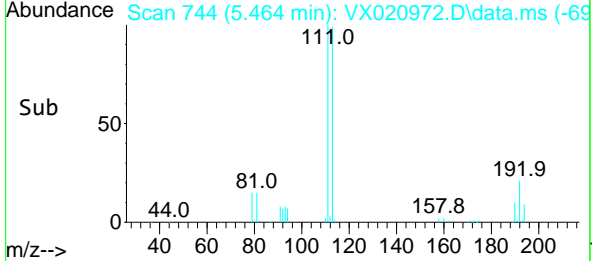


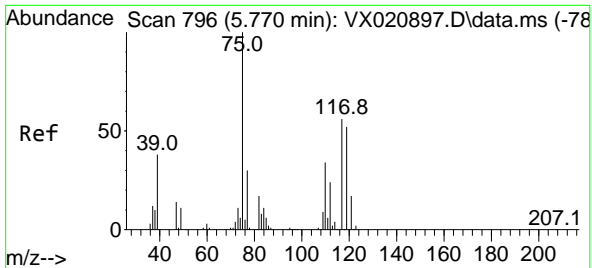
#35
 Dibromofluoromethane
 Concen: 52.21 ug/l
 RT: 5.464 min Scan# 744
 Delta R.T. -0.000 min
 Lab File: VX020972.D
 Acq: 02 Mar 2021 18:18



Tgt Ion:113 Resp: 115916

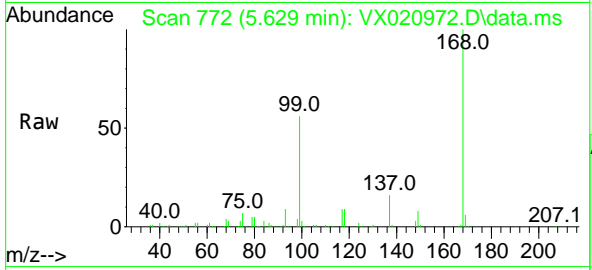
Ion	Ratio	Lower	Upper
113	100		
111	101.8	81.9	122.9
192	20.3	16.7	25.1



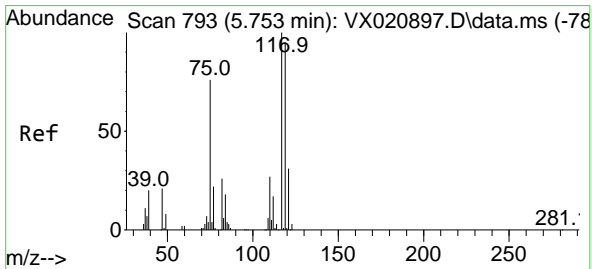
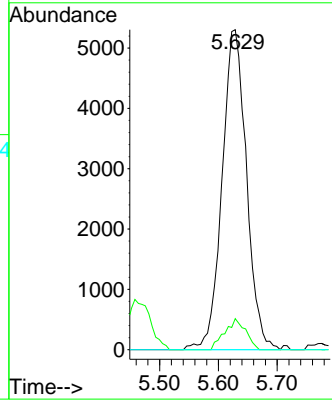
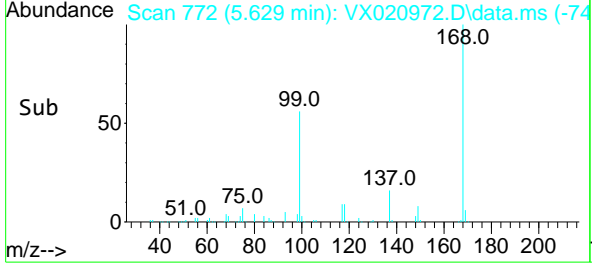


#36
 1,1-Dichloropropene
 Concen: 4.41 ug/l
 RT: 5.629 min Scan# 772
 Delta R.T. -0.142 min
 Lab File: VX020972.D
 Acq: 02 Mar 2021 18:18

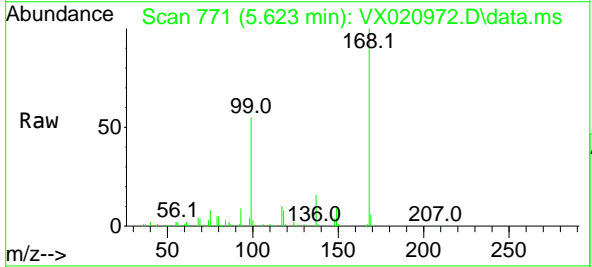
Instrument : MSVOA_X
 ClientSampled :



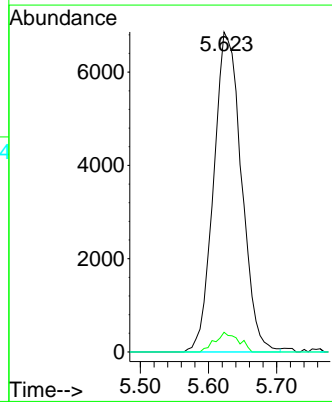
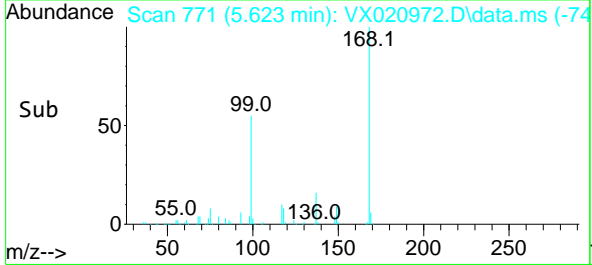
Tgt Ion	Resp	Lower	Upper
75	15316		
75	100		
110	8.3	18.1	54.4#
77	0.0	25.3	37.9#

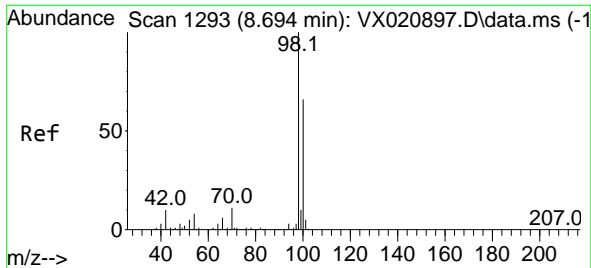


#38
 Carbon Tetrachloride
 Concen: 5.79 ug/l
 RT: 5.623 min Scan# 771
 Delta R.T. -0.130 min
 Lab File: VX020972.D
 Acq: 02 Mar 2021 18:18



Tgt Ion	Resp	Lower	Upper
117	19487		
117	100		
119	6.2	76.2	114.2#
121	0.0	24.8	37.2#

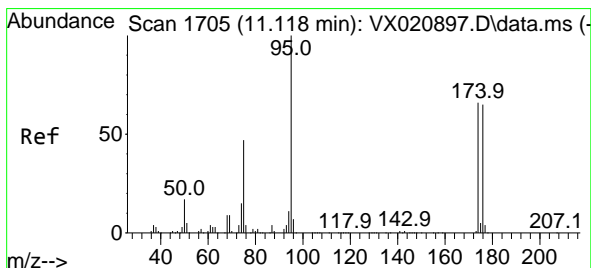
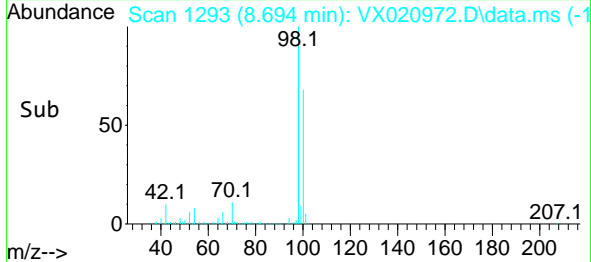
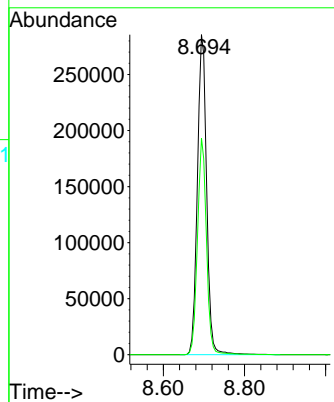
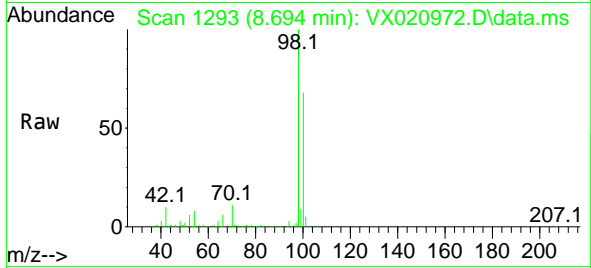




#50
 Toluene-d8
 Concen: 52.55 ug/l
 RT: 8.694 min Scan# 1293
 Delta R.T. -0.000 min
 Lab File: VX020972.D
 Acq: 02 Mar 2021 18:18

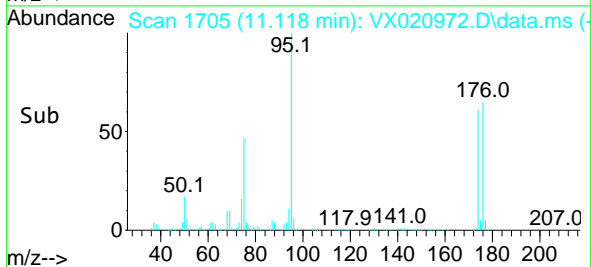
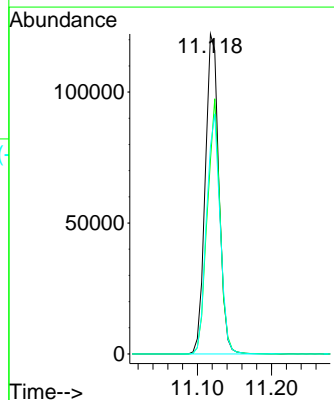
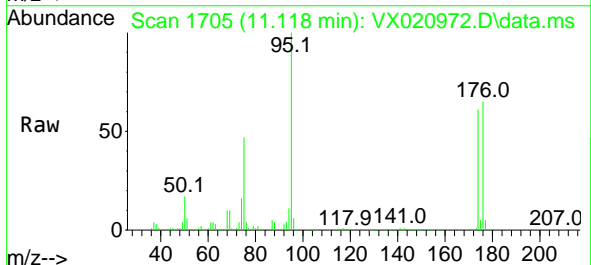
Instrument :
 MSVOA_X
 ClientSampled :

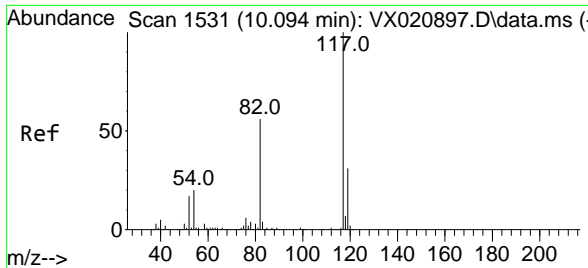
Tgt Ion: 98 Resp: 454890
 Ion Ratio Lower Upper
 98 100
 100 65.5 51.9 77.9



#62
 4-Bromofluorobenzene
 Concen: 48.84 ug/l
 RT: 11.118 min Scan# 1705
 Delta R.T. -0.000 min
 Lab File: VX020972.D
 Acq: 02 Mar 2021 18:18

Tgt Ion: 95 Resp: 156326
 Ion Ratio Lower Upper
 95 100
 174 74.6 0.0 154.6
 176 74.8 0.0 155.8



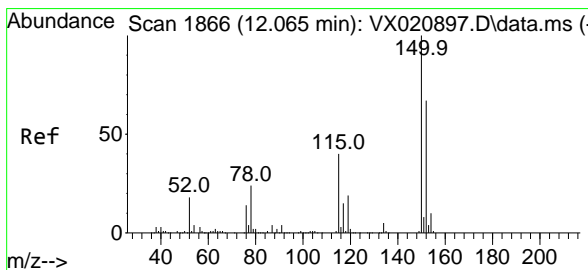
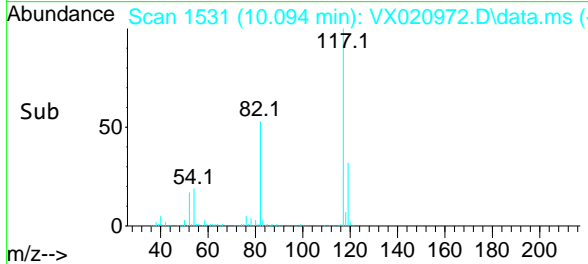
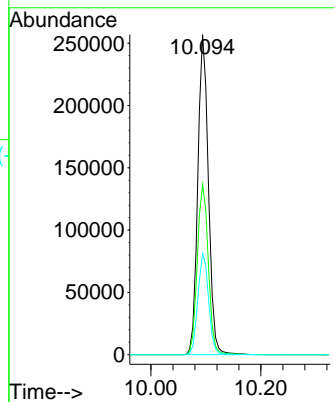
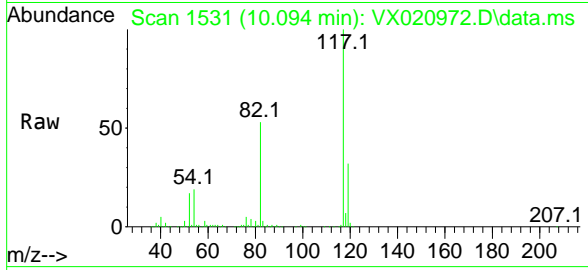


#63
 Chlorobenzene-d5
 Concen: 50.00 ug/l
 RT: 10.094 min Scan# 1531
 Delta R.T. -0.000 min
 Lab File: VX020972.D
 Acq: 02 Mar 2021 18:18

Instrument :
 MSVOA_X
 ClientSampled :

Tgt Ion:117 Resp: 344868

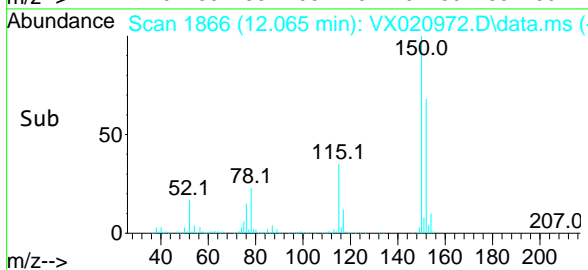
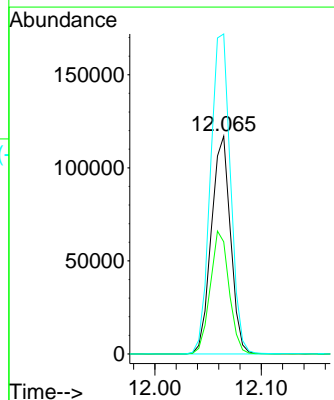
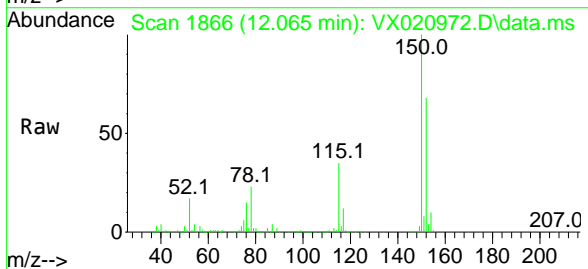
Ion	Ratio	Lower	Upper
117	100		
82	53.2	47.4	71.2
119	31.6	26.6	39.8

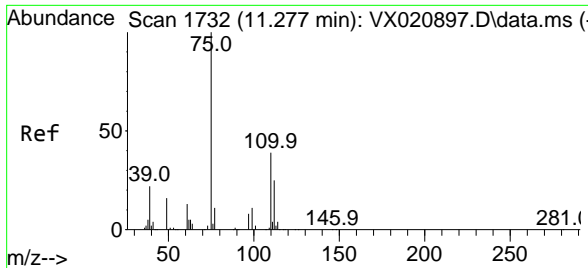


#72
 1,4-Dichlorobenzene-d4
 Concen: 50.00 ug/l
 RT: 12.065 min Scan# 1866
 Delta R.T. -0.000 min
 Lab File: VX020972.D
 Acq: 02 Mar 2021 18:18

Tgt Ion:152 Resp: 146417

Ion	Ratio	Lower	Upper
152	100		
115	55.4	41.1	123.3
150	153.7	0.0	349.0

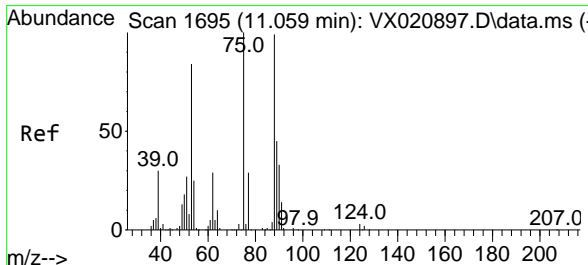
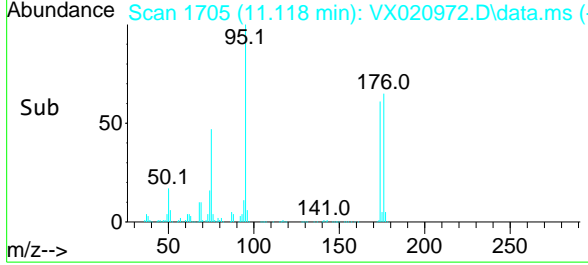
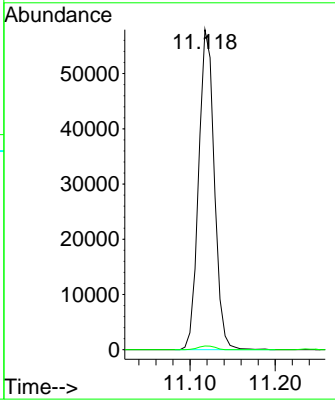
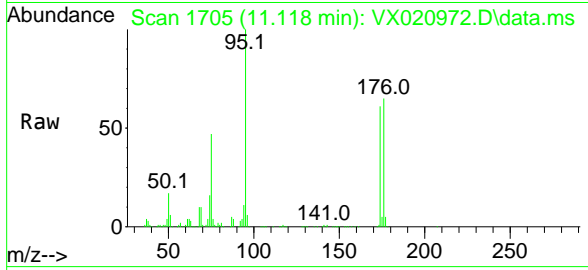




#76
 1,2,3-Trichloropropane
 Concen: 23.47 ug/l
 RT: 11.118 min Scan# 1705
 Delta R.T. -0.159 min
 Lab File: VX020972.D
 Acq: 02 Mar 2021 18:18

Instrument : MSVOA_X
 ClientSampled :

Tgt Ion: 75 Resp: 73925
 Ion Ratio Lower Upper
 75 100
 77 1.3 19.1 57.5#



#81
 trans-1,4-Dichloro-2-butene
 Concen: 51.96 ug/l
 RT: 11.118 min Scan# 1705
 Delta R.T. 0.058 min
 Lab File: VX020972.D
 Acq: 02 Mar 2021 18:18

Tgt Ion: 75 Resp: 73925
 Ion Ratio Lower Upper
 75 100
 53 0.0 74.5 111.7#
 89 0.0 37.9 56.9#

