

Data Path : Z:\voasrv\HPCHEM1\MSVOA_X\Data\VX030421\
 Data File : VX020988.D
 Acq On : 03 Mar 2021 00:28
 Operator : JC/MD
 Sample : M1536-06
 Misc : 5.0mL/MSVOA_X/WATER
 ALS Vial : 24 Sample Multiplier: 1

Instrument :
 MSVOA_X
 ClientSampleId :
 FIELD-BLANK

Integration Parameters: RTEINT.P
 Integrator: RTE
 Smoothing : ON Filtering: 5
 Sampling : 1 Min Area: 3 % of largest Peak
 Start Thrs: 0.2 Max Peaks: 100
 Stop Thrs : 0 Peak Location: TOP

If leading or trailing edge < 100 prefer < Baseline drop else tangent >
 Peak separation: 5

Method : Z:\voasrv\HPCHEM1\MSVOA_X\Method\82X022421W.M
 Title : SW846 8260

Signal : TIC: VX020988.D\data.ms

peak #	R.T. min	first scan	max scan	last scan	PK TY	peak height	corr. area	corr. % max.	% of total
1	2.417	221	226	234	rBV	9210	15440	1.39%	0.265%
2	2.581	244	254	266	rBV	10794	25048	2.26%	0.430%
3	2.993	315	324	334	rVB	6537	16958	1.53%	0.291%
4	4.640	596	604	615	rBV	3376	11118	1.00%	0.191%
5	5.464	731	744	758	rBV2	122282	350237	31.54%	6.011%
6	5.623	760	771	787	rBV	190118	542534	48.85%	9.311%
7	6.029	826	840	856	rBV	131985	347124	31.26%	5.957%
8	6.829	965	976	991	rBV	325501	772685	69.58%	13.261%
9	8.694	1285	1293	1312	rBV	704169	1110567	100.00%	19.060%
10	10.094	1525	1531	1548	rBV	739598	984643	88.66%	16.899%
11	11.118	1699	1705	1715	rBV	582816	752438	67.75%	12.914%
12	12.059	1860	1865	1875	rBV	732850	897956	80.86%	15.411%

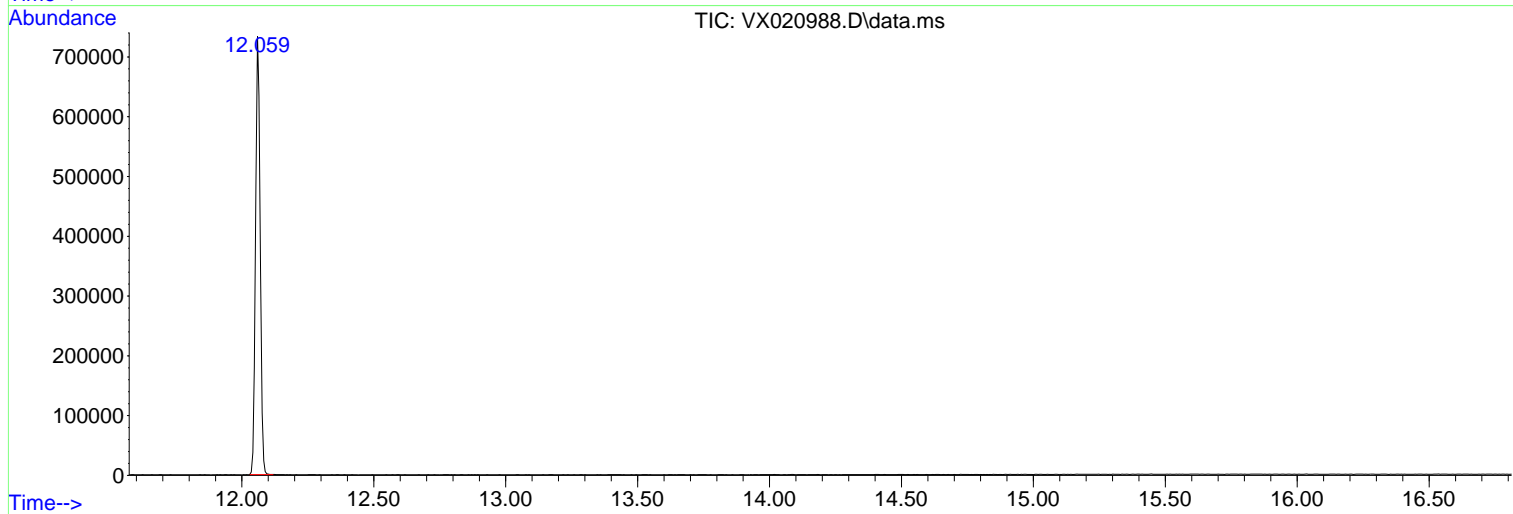
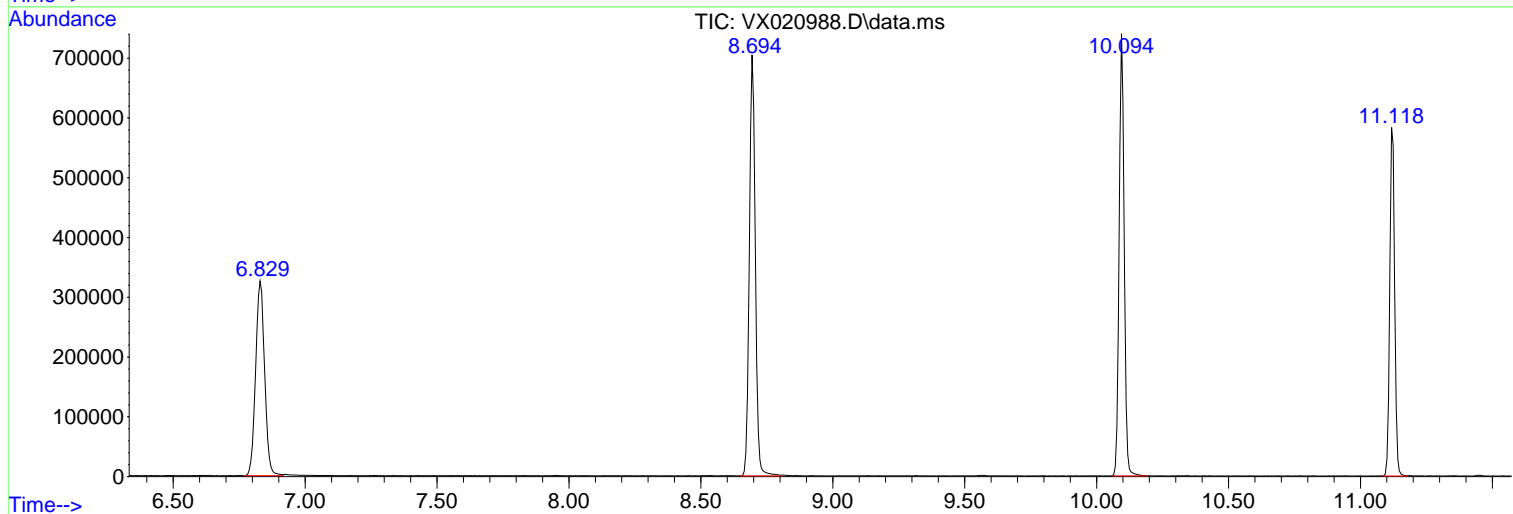
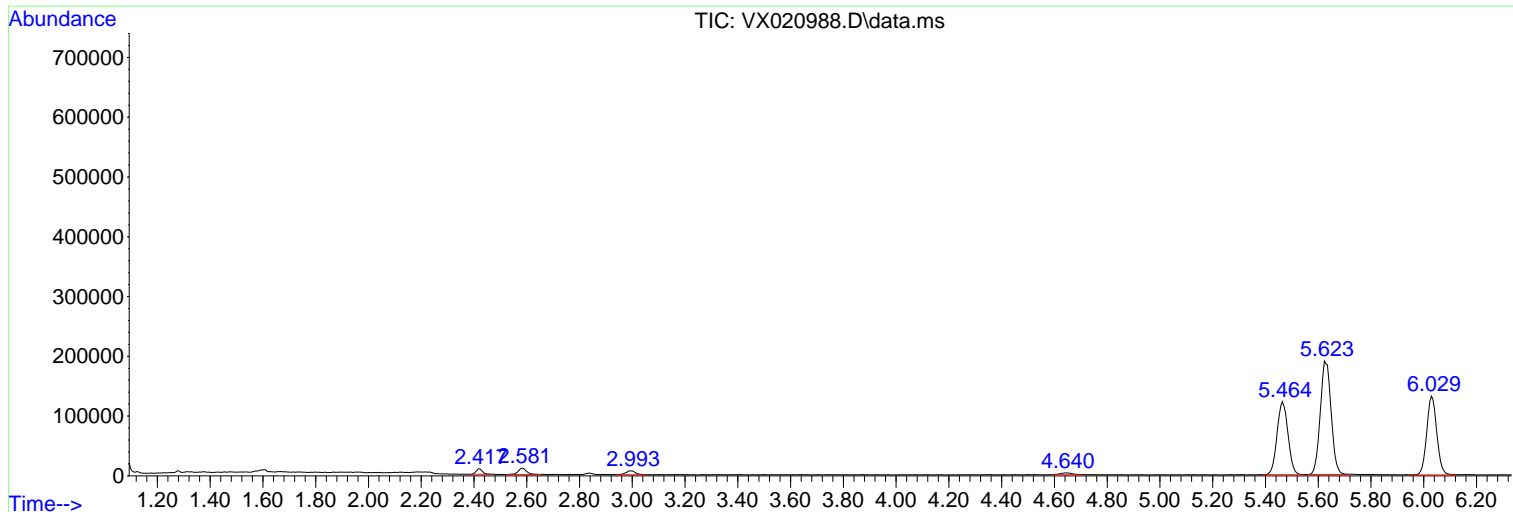
Sum of corrected areas: 5826748

Data Path : Z:\voasrv\HPCHEM1\MSVOA_X\Data\VX030421\
 Data File : VX020988.D
 Acq On : 03 Mar 2021 00:28
 Operator : JC/MD
 Sample : M1536-06
 Misc : 5.0mL/MSVOA_X/WATER
 ALS Vial : 24 Sample Multiplier: 1

Instrument :
 MSVOA_X
 ClientSampled :
 FIELD-BLANK

Quant Method : Z:\voasrv\HPCHEM1\MSVOA_X\Method\82X022421W.M
 Quant Title : SW846 8260

TIC Library : C:\DATABASE\NIST11.L
 TIC Integration Parameters: LSCINT.P



Library Search Compound Report

Data Path : Z:\voasrv\HPCHEM1\MSVOA_X\Data\VX030421\
Data File : VX020988.D
Acq On : 03 Mar 2021 00:28
Operator : JC/MD
Sample : M1536-06
Misc : 5.0mL/MSVOA_X/WATER
ALS Vial : 24 Sample Multiplier: 1

Instrument :
MSVOA_X
ClientSampleId :
FIELD-BLANK

Quant Method : Z:\voasrv\HPCHEM1\MSVOA_X\Method\82X022421W.M
Quant Title : SW846 8260

TIC Library : C:\DATABASE\NIST11.L
TIC Integration Parameters: LSCINT.P

No Library Search Compounds Detected

Data Path : Z:\voasrv\HPCHEM1\MSVOA_X\Data\VX030421\
Data File : VX020988.D
Acq On : 03 Mar 2021 00:28
Operator : JC/MD
Sample : M1536-06
Misc : 5.0mL/MSVOA_X/WATER
ALS Vial : 24 Sample Multiplier: 1

Instrument :
MSVOA_X
ClientSampled :
FIELD-BLANK

Quant Method : Z:\voasrv\HPCHEM1\MSVOA_X\Method\82X022421W.M
Quant Title : SW846 8260

TIC Library : C:\DATABASE\NIST11.L
TIC Integration Parameters: LSCINT.P

TIC Top Hit name	RT	EstConc	Units	Response	--Internal Standard--		
					#	RT	Resp Conc
