

Data Path : Z:\voasrv\HPCHEM1\MSVOA_X\Data\VX030422\
 Data File : VX027296.D
 Acq On : 04 Mar 2022 13:07
 Operator : JC/MD
 Sample : N1799-01
 Misc : 5.0mL/MSVOA_X/WATER
 ALS Vial : 8 Sample Multiplier: 1

Instrument :
 MSVOA_X
 ClientSampleId :
 TT-038-IDWGW-20220303

Quant Time: Mar 05 01:49:14 2022
 Quant Method : Z:\voasrv\HPCHEM1\MSVOA_X\Method\624X030322W.M
 Quant Title : METHOD 624 VOLATILE ORGANIC ANALYSIS
 QLast Update : Fri Mar 04 01:00:22 2022
 Response via : Initial Calibration

Compound	R.T.	QIon	Response	Conc	Units	Dev(Min)

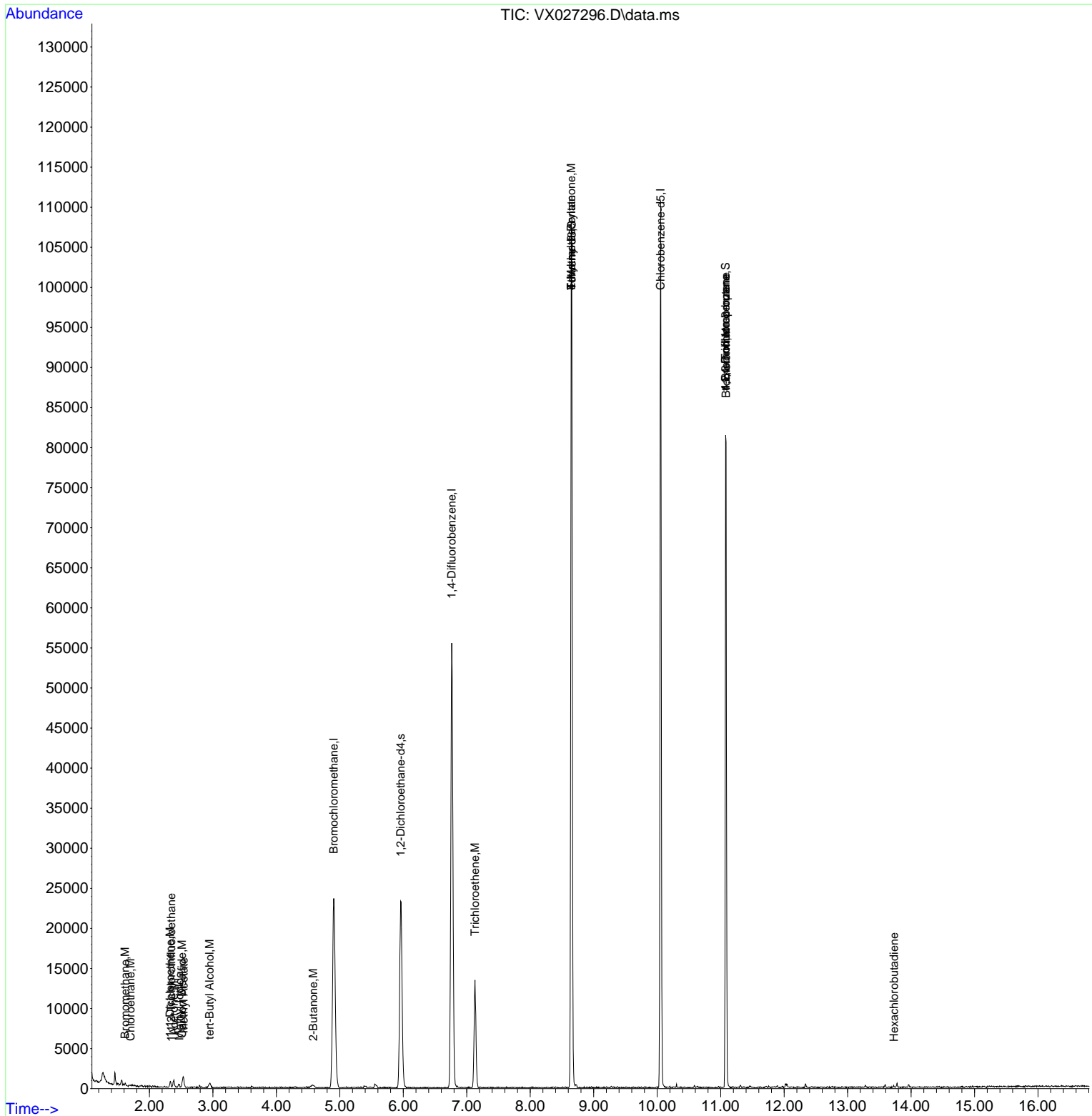
Internal Standards						
1) Bromochloromethane	4.904	128	10799	30.000	ug/l	0.00
28) 1,4-Difluorobenzene	6.763	114	58552	30.000	ug/l	0.00
57) Chlorobenzene-d5	10.055	117	50421	30.000	ug/l	0.00
System Monitoring Compounds						
27) 1,2-Dichloroethane-d4	5.958	65	23145	30.958	ug/l	0.00
Spiked Amount	30.000	Range 91 - 110	Recovery	=	103.200%	
60) 4-Bromofluorobenzene	11.079	95	22375	27.393	ug/l	0.00
Spiked Amount	30.000	Range 63 - 112	Recovery	=	91.300%	
63) Toluene-d8	8.653	98	66197	30.032	ug/l	0.00
Spiked Amount	30.000	Range 91 - 112	Recovery	=	100.100%	
Target Compounds						
						Qvalue
5) Bromomethane	1.618	94	146	0.510	ug/l	92
6) Chloroethane	1.703	64	75	0.238	ug/l #	42
9) 1,1,2-Trichlorotrifluo...	2.343	101	180	0.283	ug/l #	64
10) 1,1-Dichloroethene	2.325	96	199	0.322	ug/l #	77
11) Methyl Iodide	2.471	142	340	0.472	ug/l #	92
12) Methyl Acetate	2.538	43	322	0.400	ug/l #	47
15) Acetone	2.386	58	286	2.746	ug/l	90
16) Carbon Disulfide	2.514	76	540	0.329	ug/l #	75
23) tert-Butyl Alcohol	2.947	59	385	2.679	ug/l #	100
30) 2-Butanone	4.580	43	159	0.315	ug/l #	54
37) Trichloroethene	7.129	130	5200	6.580	ug/l	97
51) Ethyl methacrylate	8.647	69	248	0.234	ug/l #	72
56) Bromoform	11.085	173	216	0.396	ug/l #	1
58) 4-Methyl-2-Pentanone	8.647	43	263	0.288	ug/l #	1
72) 1,2,3-Trichloropropane	11.079	75	11167	12.620	ug/l	38
77) t-1,4-Dichloro-2-butene	11.079	75	11167	42.599	ug/l #	3
90) Hexachlorobutadiene	13.731	225	87	0.225	ug/l #	54

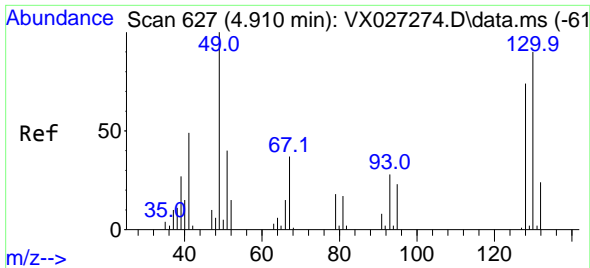
(#) = qualifier out of range (m) = manual integration (+) = signals summed

Data Path : Z:\voasrv\HPCHEM1\MSVOA_X\Data\VX030422\
 Data File : VX027296.D
 Acq On : 04 Mar 2022 13:07
 Operator : JC/MD
 Sample : N1799-01
 Misc : 5.0mL/MSVOA_X/WATER
 ALS Vial : 8 Sample Multiplier: 1

Instrument :
 MSVOA_X
 ClientSampleId :
 TT-038-IDWGW-20220303

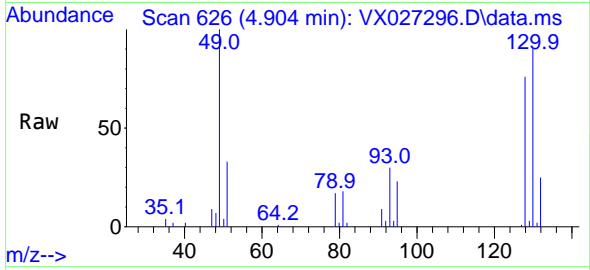
Quant Time: Mar 05 01:49:14 2022
 Quant Method : Z:\voasrv\HPCHEM1\MSVOA_X\Method\624X030322W.M
 Quant Title : METHOD 624 VOLATILE ORGANIC ANALYSIS
 QLast Update : Fri Mar 04 01:00:22 2022
 Response via : Initial Calibration



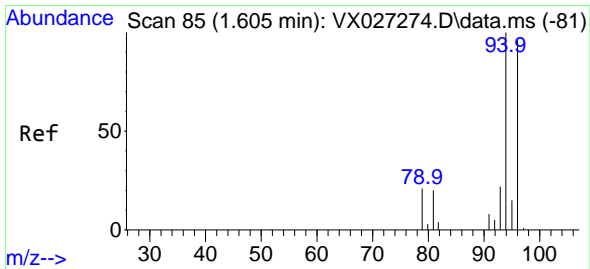
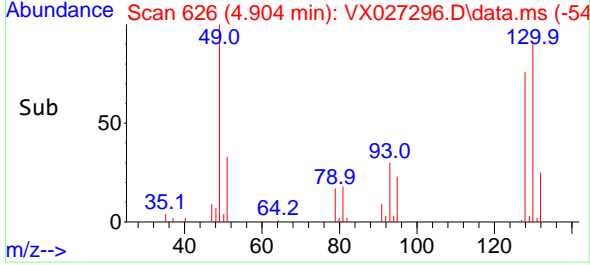
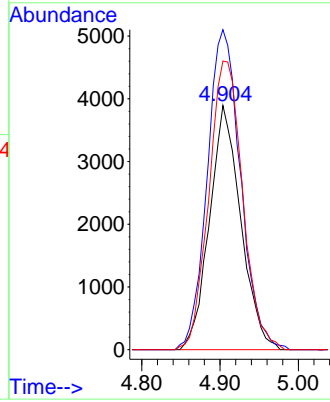


#1
 Bromochloromethane
 Concen: 30.000 ug/l
 RT: 4.904 min Scan# 61
 Delta R.T. -0.006 min
 Lab File: VX027296.D
 Acq: 04 Mar 2022 13:07

Instrument : MSVOA_X
 ClientSampleId : TT-038-IDWGW-20220303

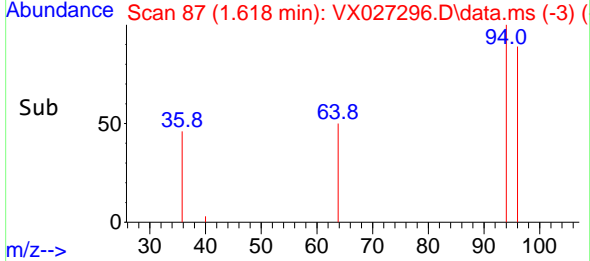
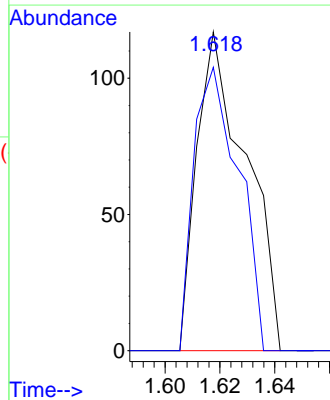
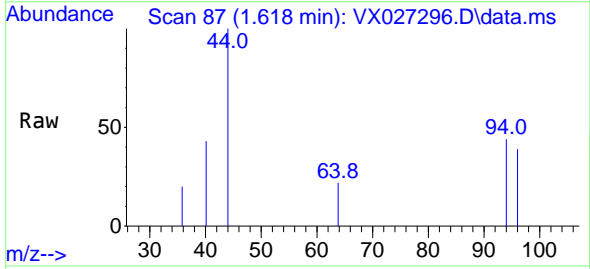


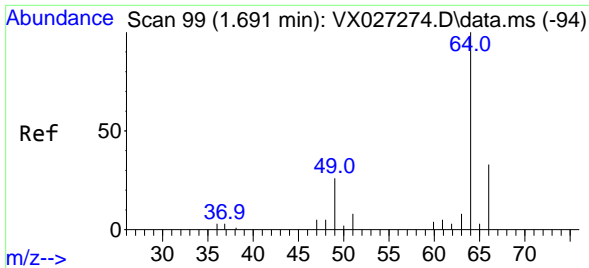
Tgt Ion:128 Resp: 10799
 Ion Ratio Lower Upper
 128 100
 49 139.8 0.0 358.3
 130 127.8 0.0 319.3



#5
 Bromomethane
 Concen: 0.510 ug/l
 RT: 1.618 min Scan# 87
 Delta R.T. 0.012 min
 Lab File: VX027296.D
 Acq: 04 Mar 2022 13:07

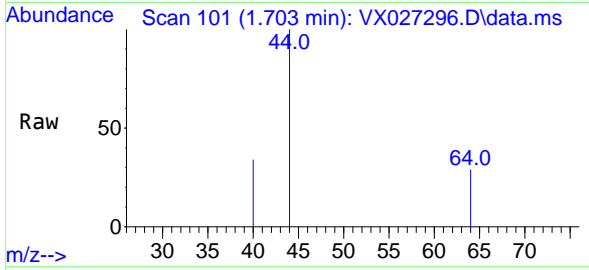
Tgt Ion: 94 Resp: 146
 Ion Ratio Lower Upper
 94 100
 96 88.9 77.0 115.6



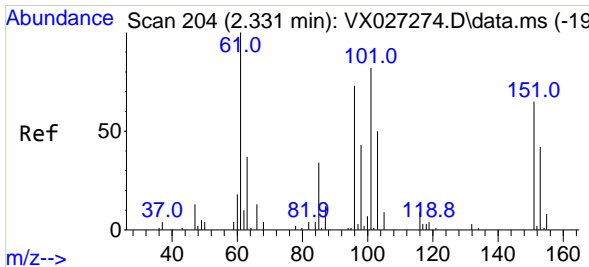
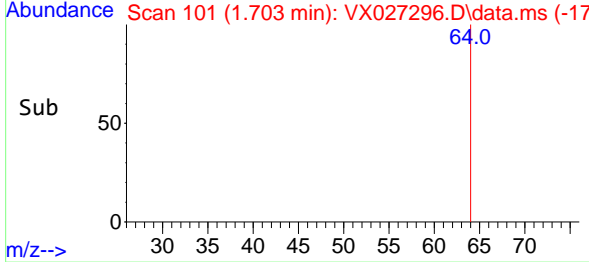
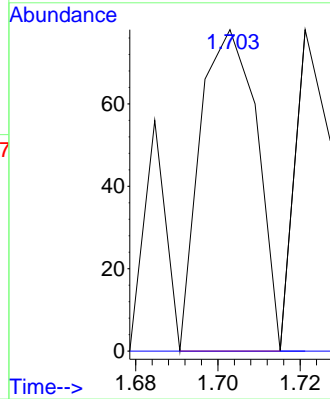


#6
 Chloroethane
 Concen: 0.238 ug/l
 RT: 1.703 min Scan# 101
 Delta R.T. 0.012 min
 Lab File: VX027296.D
 Acq: 04 Mar 2022 13:07

Instrument : MSVOA_X
 ClientSampleId : TT-038-IDWGW-20220303

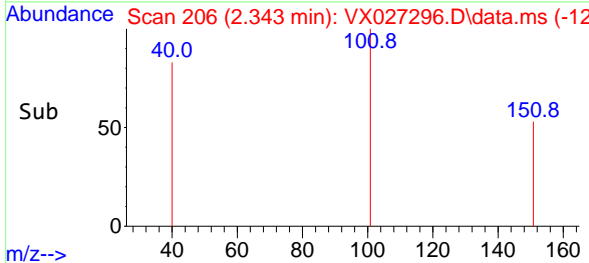
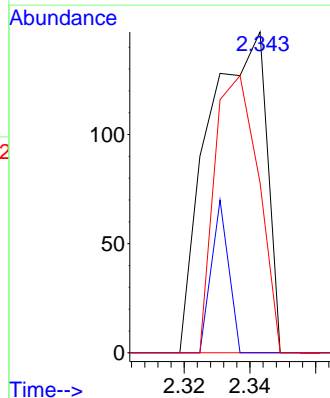
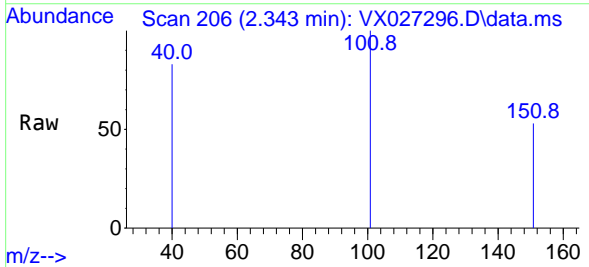


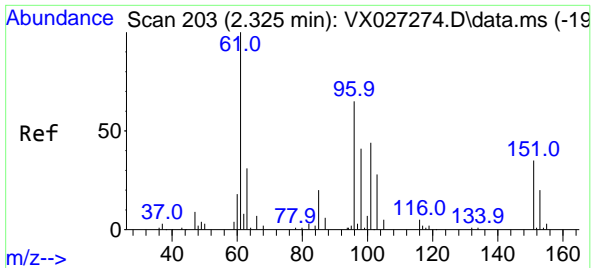
Tgt Ion: 64 Resp: 75
 Ion Ratio Lower Upper
 64 100
 66 0.0 26.4 39.6#



#9
 1,1,2-Trichlorotrifluoroethane
 Concen: 0.283 ug/l
 RT: 2.343 min Scan# 206
 Delta R.T. 0.012 min
 Lab File: VX027296.D
 Acq: 04 Mar 2022 13:07

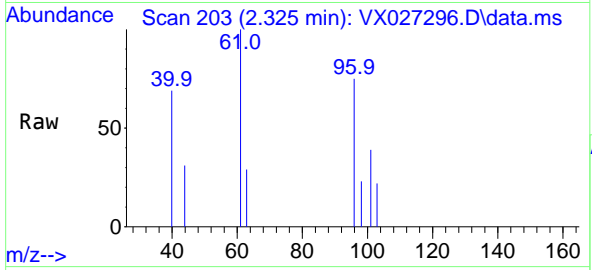
Tgt Ion: 101 Resp: 180
 Ion Ratio Lower Upper
 101 100
 85 0.0 0.0 84.6
 151 65.0 0.0 165.4





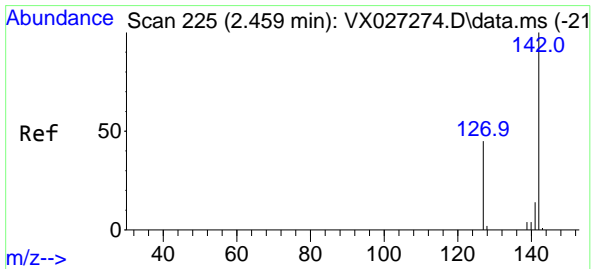
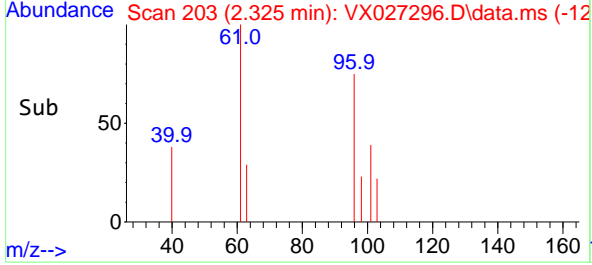
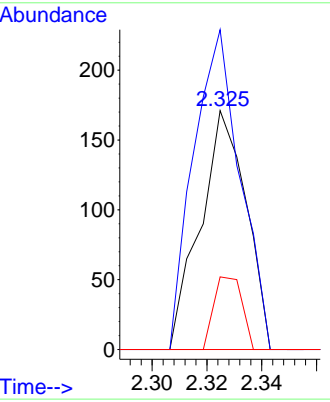
#10
 1,1-Dichloroethene
 Concen: 0.322 ug/l
 RT: 2.325 min Scan# 203
 Delta R.T. 0.000 min
 Lab File: VX027296.D
 Acq: 04 Mar 2022 13:07

Instrument : MSVOA_X
 ClientSampleId : TT-038-IDWGW-20220303



Tgt Ion: 96 Resp: 199

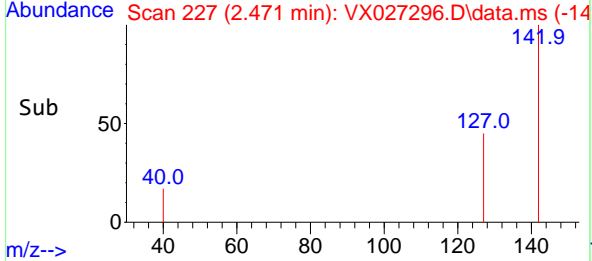
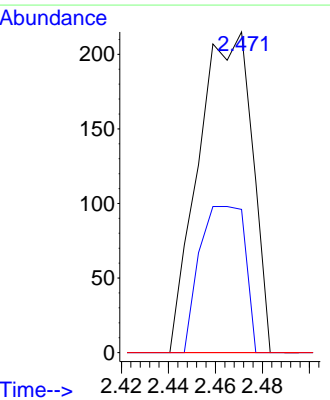
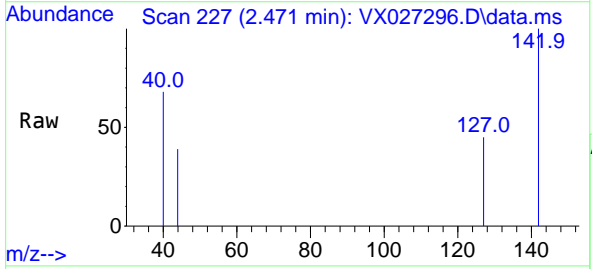
Ion	Ratio	Lower	Upper
96	100		
61	133.9	122.6	183.8
98	30.4	50.1	75.1

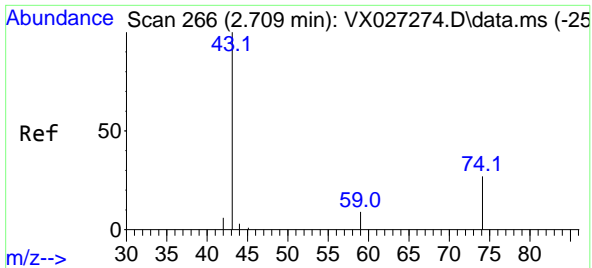


#11
 Methyl Iodide
 Concen: 0.472 ug/l
 RT: 2.471 min Scan# 227
 Delta R.T. 0.012 min
 Lab File: VX027296.D
 Acq: 04 Mar 2022 13:07

Tgt Ion: 142 Resp: 340

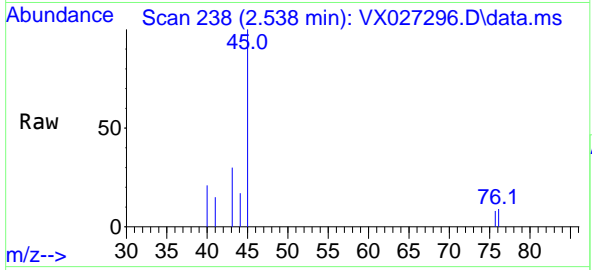
Ion	Ratio	Lower	Upper
142	100		
127	44.7	22.3	66.9
141	0.0	7.0	20.9



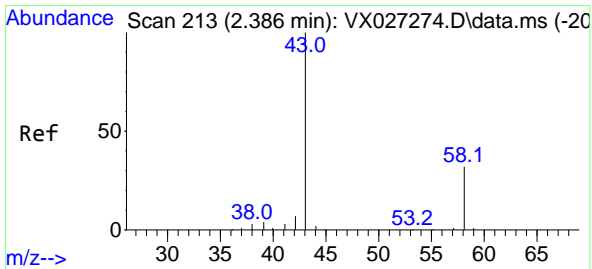
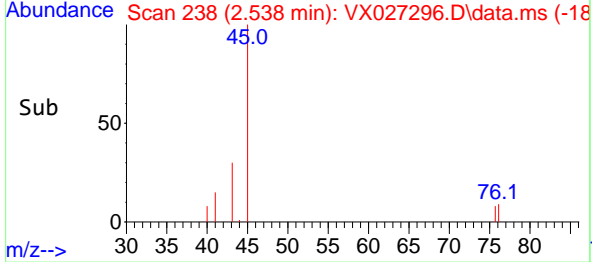
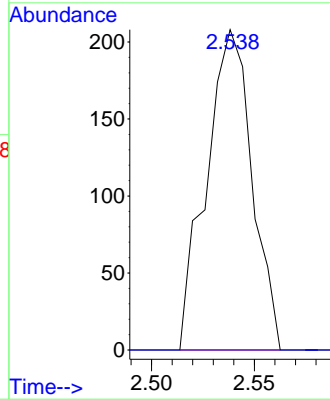


#12
Methyl Acetate
Concen: 0.400 ug/l
RT: 2.538 min Scan# 213
Delta R.T. -0.171 min
Lab File: VX027296.D
Acq: 04 Mar 2022 13:07

Instrument : MSVOA_X
ClientSampleId : TT-038-IDWGW-20220303

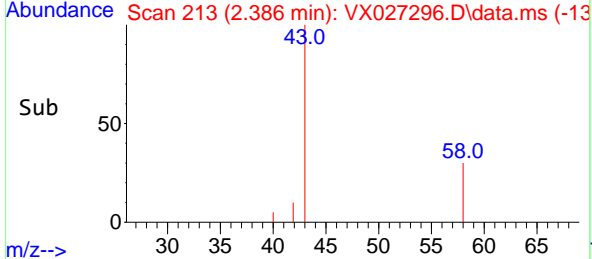
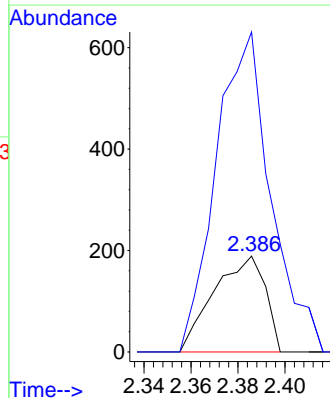
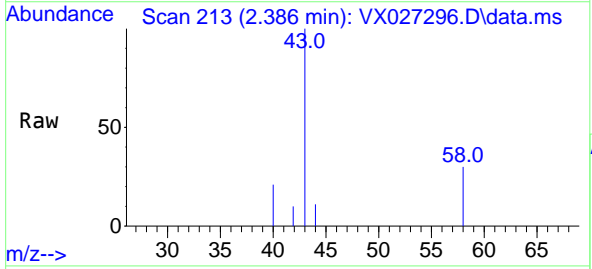


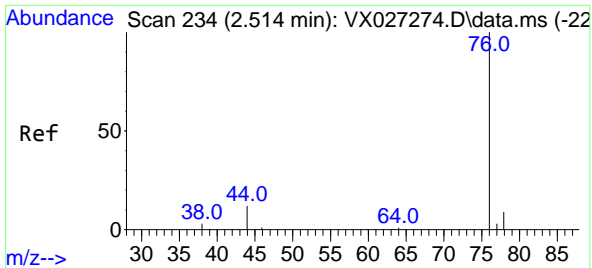
Tgt Ion: 43 Resp: 322
Ion Ratio Lower Upper
43 100
74 0.0 22.1 33.1#



#15
Acetone
Concen: 2.746 ug/l
RT: 2.386 min Scan# 213
Delta R.T. 0.000 min
Lab File: VX027296.D
Acq: 04 Mar 2022 13:07

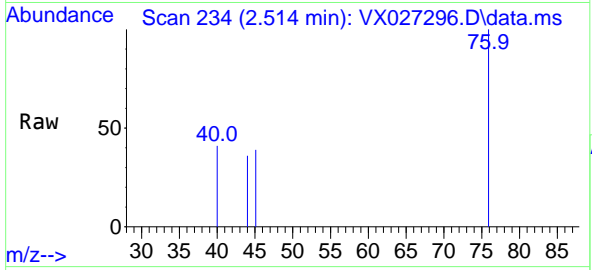
Tgt Ion: 58 Resp: 286
Ion Ratio Lower Upper
58 100
43 333.9 250.2 375.2



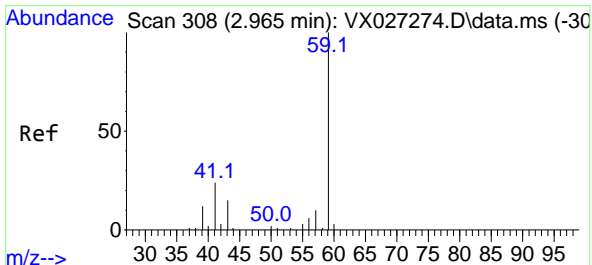
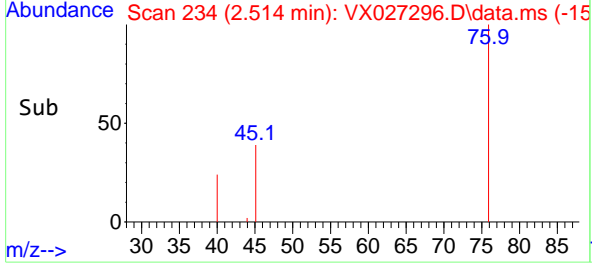
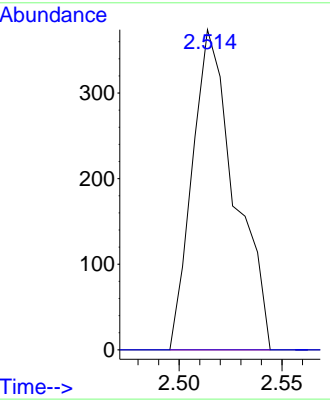


#16
 Carbon Disulfide
 Concen: 0.329 ug/l
 RT: 2.514 min Scan# 21
 Delta R.T. 0.000 min
 Lab File: VX027296.D
 Acq: 04 Mar 2022 13:07

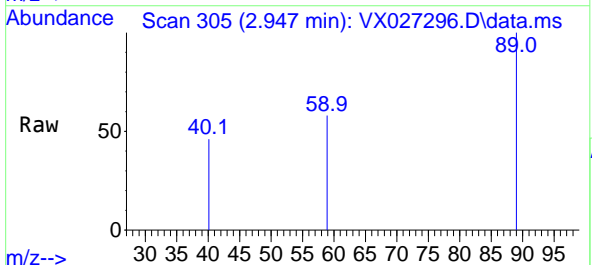
Instrument : MSVOA_X
 ClientSampleId : TT-038-IDWGW-20220303



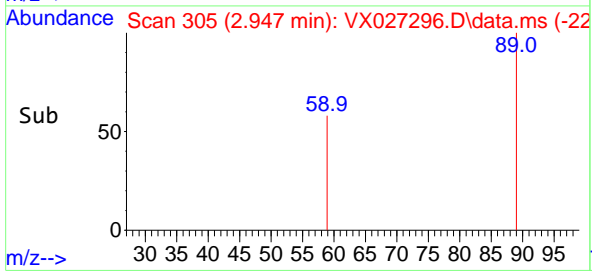
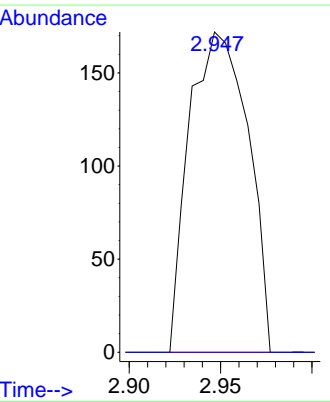
Tgt Ion: 76 Resp: 540
 Ion Ratio Lower Upper
 76 100
 78 0.0 7.1 10.7#

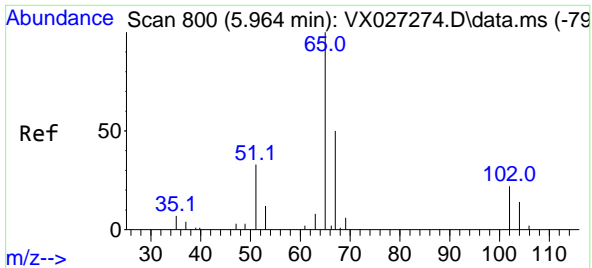


#23
 tert-Butyl Alcohol
 Concen: 2.679 ug/l
 RT: 2.947 min Scan# 305
 Delta R.T. -0.018 min
 Lab File: VX027296.D
 Acq: 04 Mar 2022 13:07



Tgt Ion: 59 Resp: 385
 Ion Ratio Lower Upper
 59 100
 52 0.0 0.0 0.0

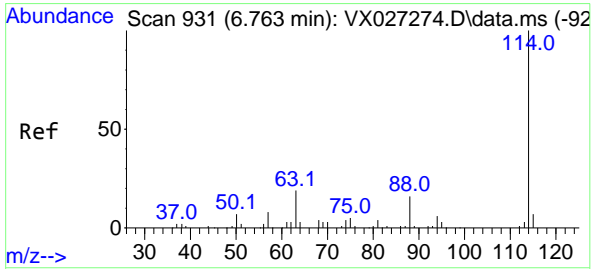
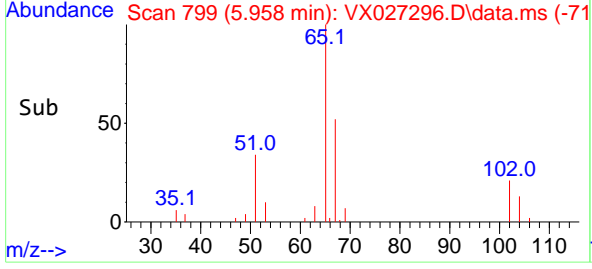
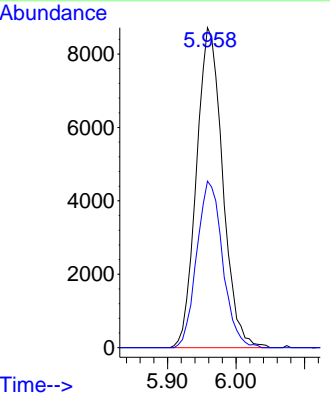
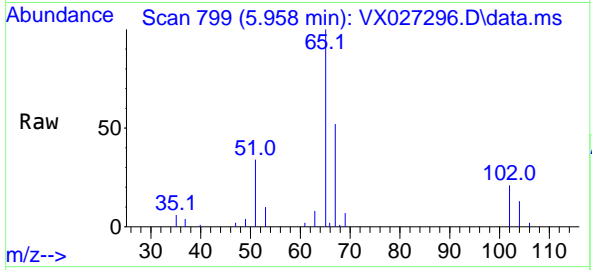




#27
 1,2-Dichloroethane-d4
 Concen: 30.958 ug/l
 RT: 5.958 min Scan# 799
 Delta R.T. -0.006 min
 Lab File: VX027296.D
 Acq: 04 Mar 2022 13:07

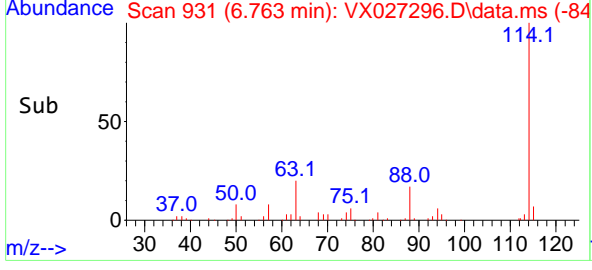
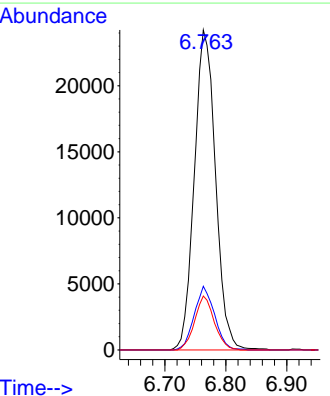
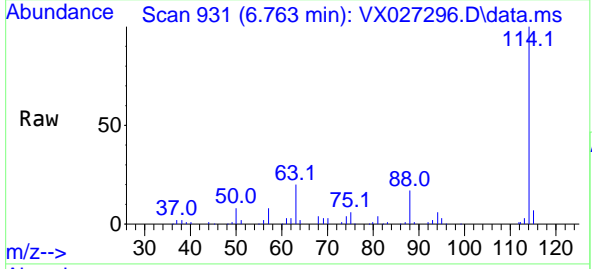
Instrument : MSVOA_X
 ClientSampleId : TT-038-IDWGW-20220303

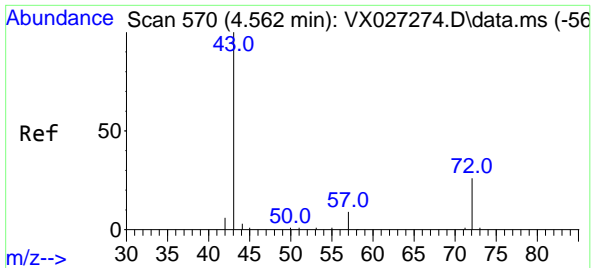
Tgt Ion: 65 Resp: 23145
 Ion Ratio Lower Upper
 65 100
 67 51.2 42.3 63.5



#28
 1,4-Difluorobenzene
 Concen: 30.000 ug/l
 RT: 6.763 min Scan# 931
 Delta R.T. 0.000 min
 Lab File: VX027296.D
 Acq: 04 Mar 2022 13:07

Tgt Ion: 114 Resp: 58552
 Ion Ratio Lower Upper
 114 100
 63 19.0 15.3 22.9
 88 15.6 12.2 18.4



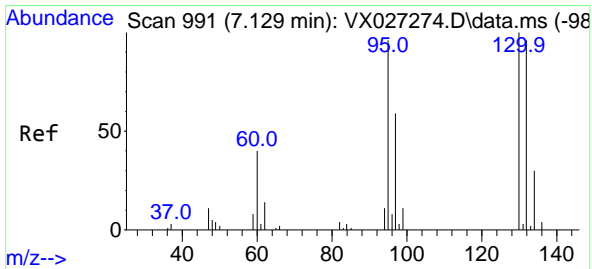
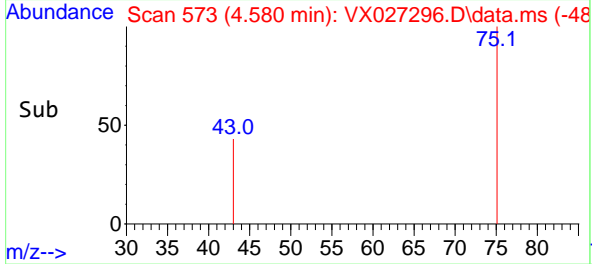
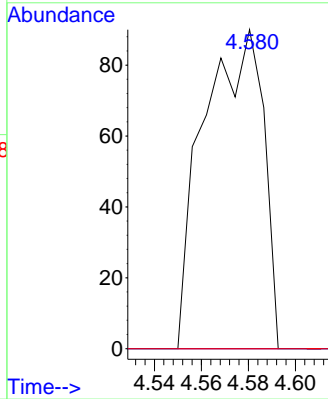
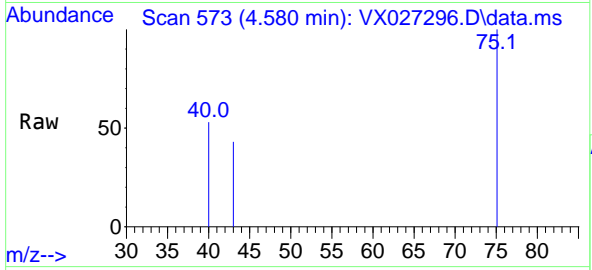


#30
 2-Butanone
 Concen: 0.315 ug/l
 RT: 4.580 min Scan# 51
 Delta R.T. 0.018 min
 Lab File: VX027296.D
 Acq: 04 Mar 2022 13:07

Instrument : MSVOA_X
 ClientSampleId : TT-038-IDWGW-20220303

Tgt Ion: 43 Resp: 159

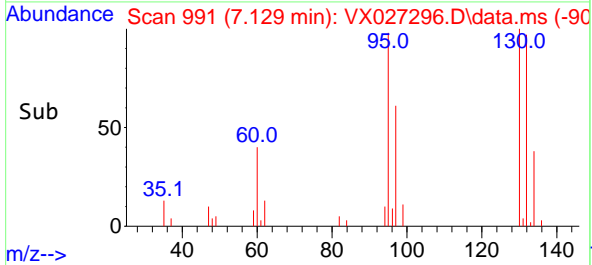
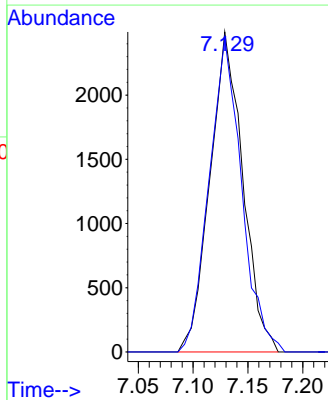
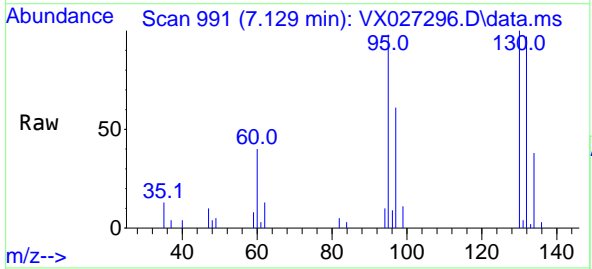
Ion	Ratio	Lower	Upper
43	100		
57	0.0	6.6	10.0#
72	0.0	22.1	33.1#

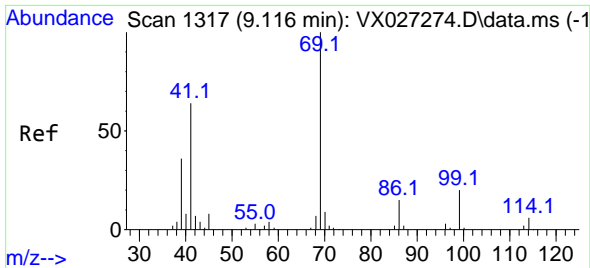


#37
 Trichloroethene
 Concen: 6.580 ug/l
 RT: 7.129 min Scan# 991
 Delta R.T. 0.000 min
 Lab File: VX027296.D
 Acq: 04 Mar 2022 13:07

Tgt Ion:130 Resp: 5200

Ion	Ratio	Lower	Upper
130	100		
95	98.3	76.5	114.7



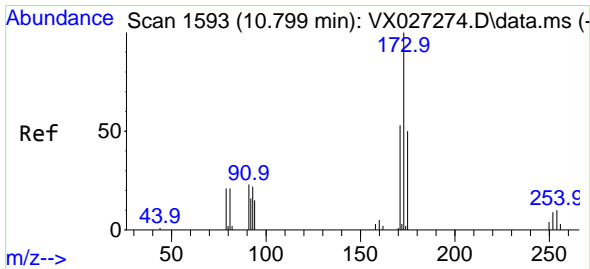
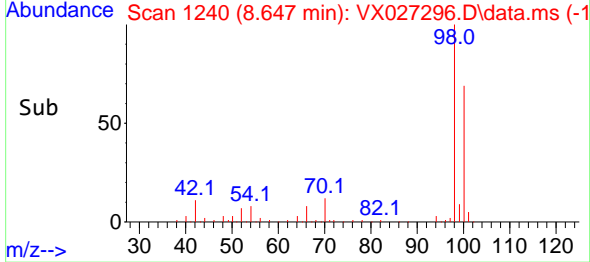
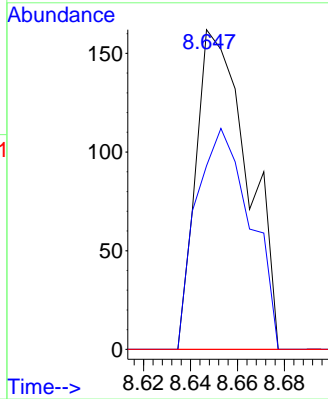
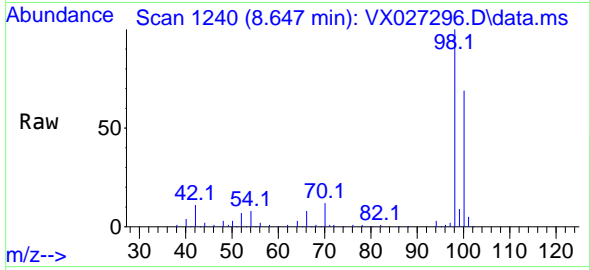


#51
 Ethyl methacrylate
 Concen: 0.234 ug/l
 RT: 8.647 min Scan# 11
 Delta R.T. -0.469 min
 Lab File: VX027296.D
 Acq: 04 Mar 2022 13:07

Instrument : MSVOA_X
 ClientSampleId : TT-038-IDWGW-20220303

Tgt Ion: 69 Resp: 248

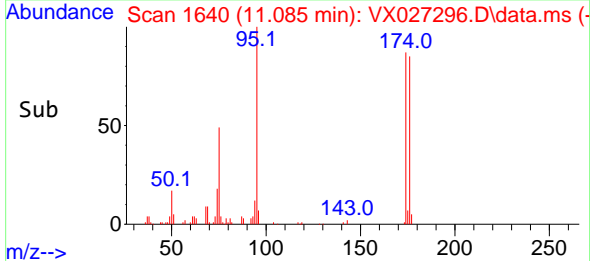
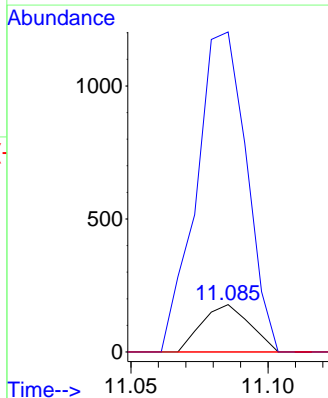
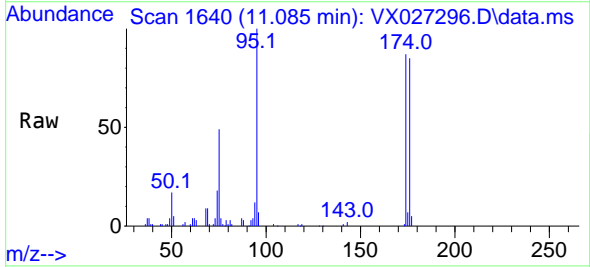
Ion	Ratio	Lower	Upper
69	100		
41	57.4	32.1	96.5
39	0.0	18.3	54.9#

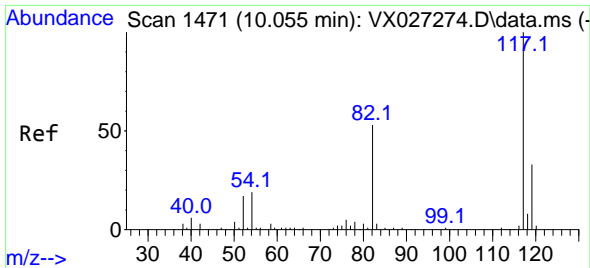


#56
 Bromoform
 Concen: 0.396 ug/l
 RT: 11.085 min Scan# 1640
 Delta R.T. 0.287 min
 Lab File: VX027296.D
 Acq: 04 Mar 2022 13:07

Tgt Ion: 173 Resp: 216

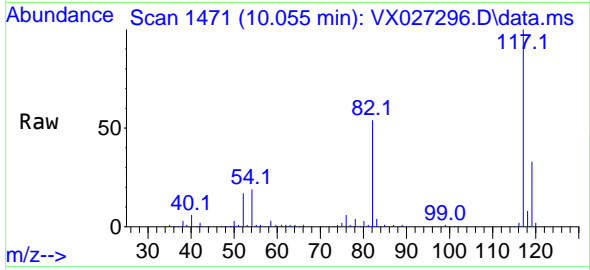
Ion	Ratio	Lower	Upper
173	100		
175	709.3	40.3	60.5#
254	0.0	7.4	11.2#





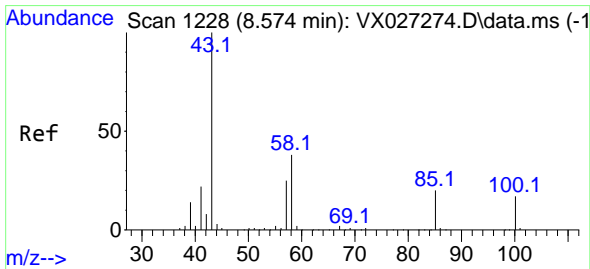
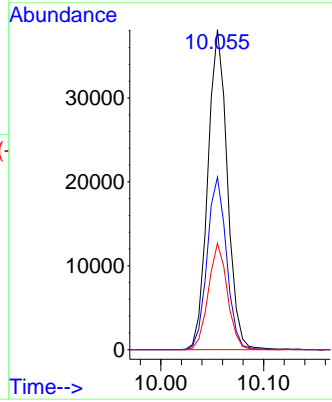
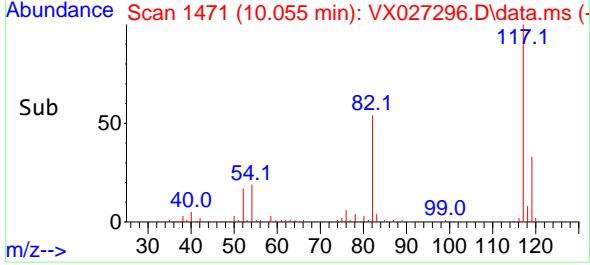
#57
 Chlorobenzene-d5
 Concen: 30.000 ug/l
 RT: 10.055 min Scan# 1471
 Delta R.T. 0.000 min
 Lab File: VX027296.D
 Acq: 04 Mar 2022 13:07

Instrument : MSVOA_X
 ClientSampleId : TT-038-IDWGW-20220303

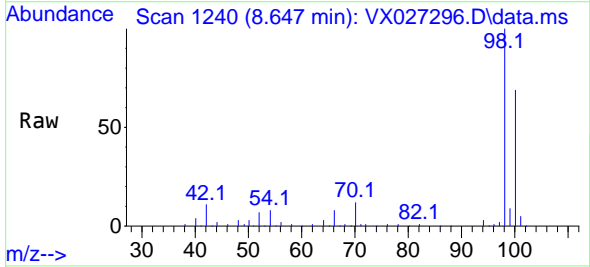


Tgt Ion: 117 Resp: 50421

Ion	Ratio	Lower	Upper
117	100		
82	53.5	42.3	63.5
119	32.5	26.2	39.2

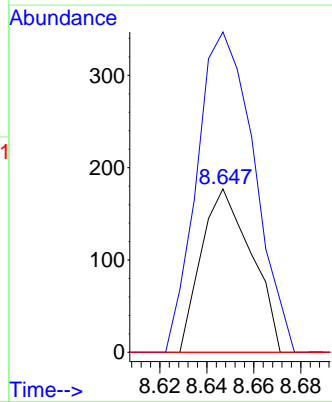
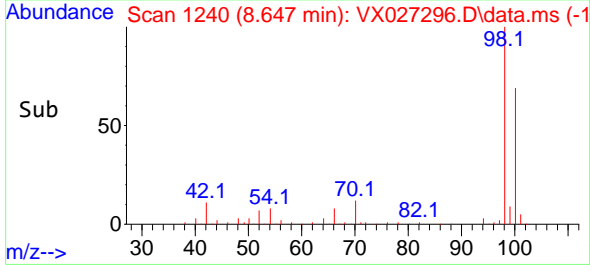


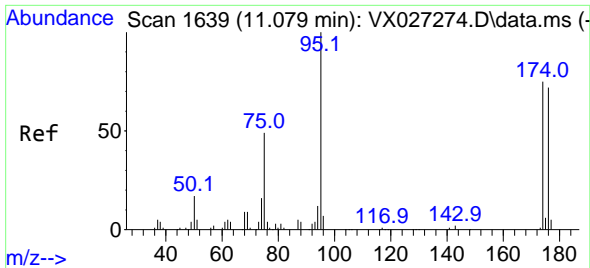
#58
 4-Methyl-2-Pentanone
 Concen: 0.288 ug/l
 RT: 8.647 min Scan# 1240
 Delta R.T. 0.073 min
 Lab File: VX027296.D
 Acq: 04 Mar 2022 13:07



Tgt Ion: 43 Resp: 263

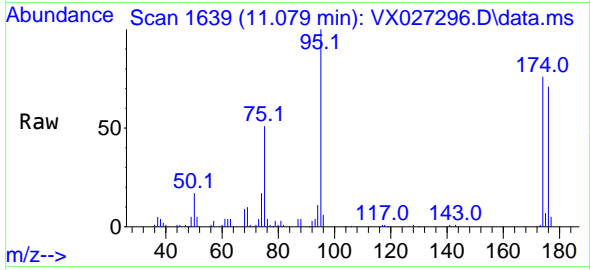
Ion	Ratio	Lower	Upper
43	100		
58	223.6	31.8	47.6#
85	0.0	15.8	23.6#



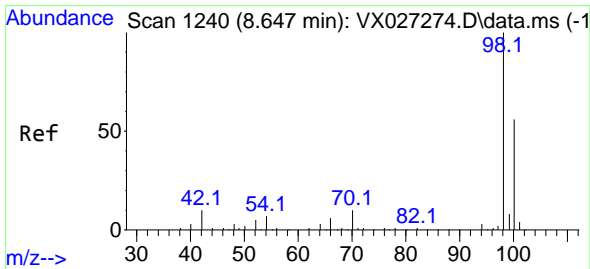
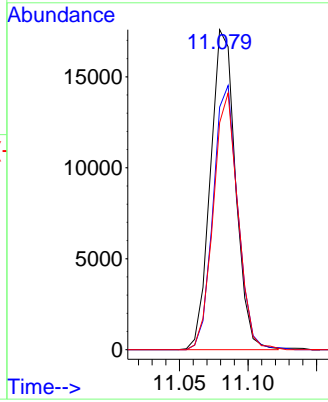
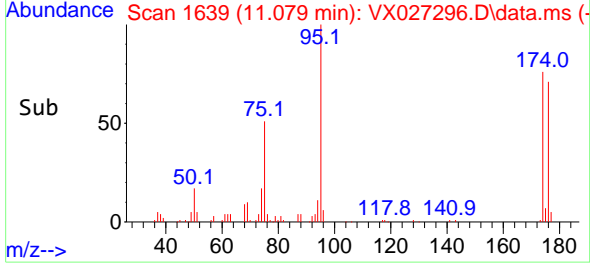


#60
 4-Bromofluorobenzene
 Concen: 27.393 ug/l
 RT: 11.079 min Scan# 11
 Delta R.T. 0.000 min
 Lab File: VX027296.D
 Acq: 04 Mar 2022 13:07

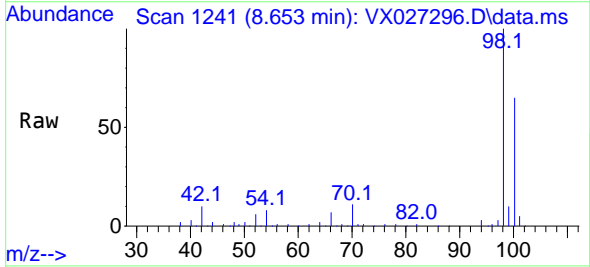
Instrument : MSVOA_X
 ClientSampleId : TT-038-IDWGW-20220303



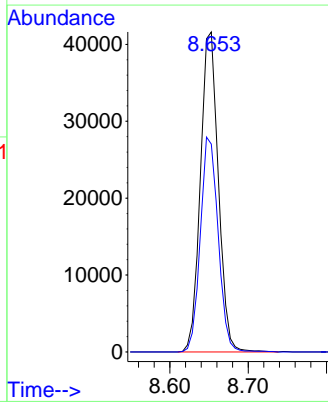
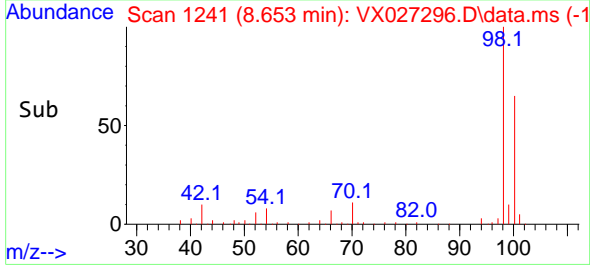
Tgt Ion: 95 Resp: 22375
 Ion Ratio Lower Upper
 95 100
 174 81.1 65.4 98.2
 176 78.6 63.4 95.0

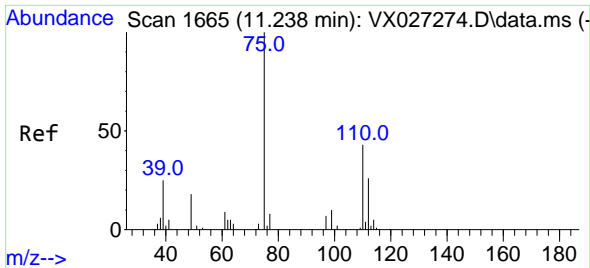


#63
 Toluene-d8
 Concen: 30.032 ug/l
 RT: 8.653 min Scan# 1241
 Delta R.T. 0.006 min
 Lab File: VX027296.D
 Acq: 04 Mar 2022 13:07



Tgt Ion: 98 Resp: 66197
 Ion Ratio Lower Upper
 98 100
 100 66.4 51.4 77.2

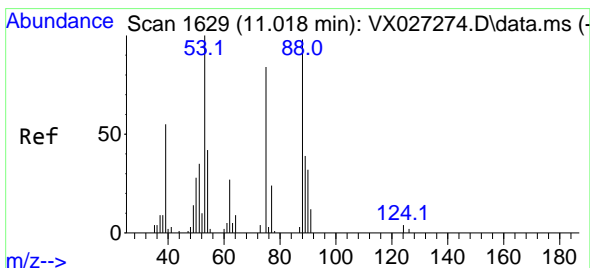
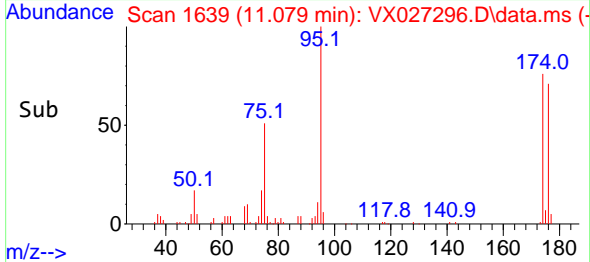
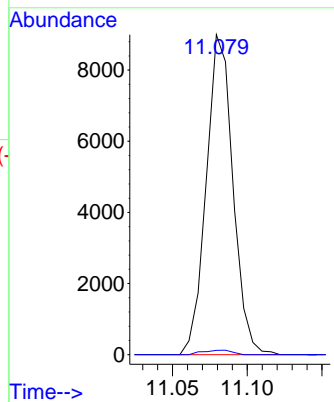
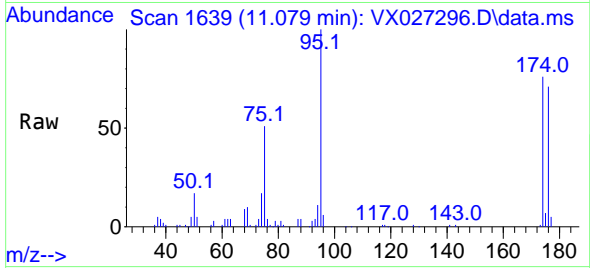




#72
 1,2,3-Trichloropropane
 Concen: 12.620 ug/l
 RT: 11.079 min Scan# 1639
 Delta R.T. -0.159 min
 Lab File: VX027296.D
 Acq: 04 Mar 2022 13:07

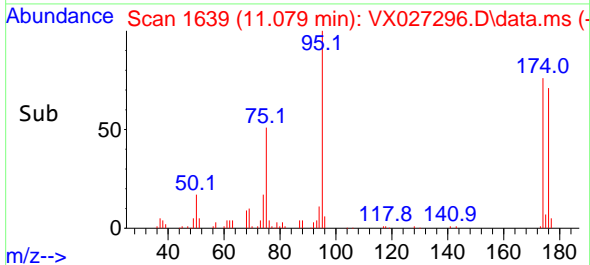
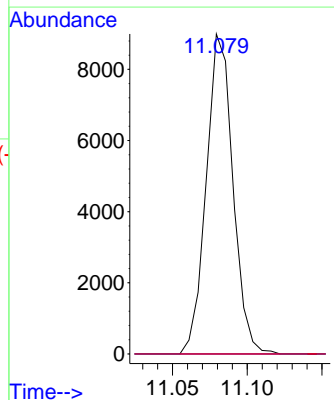
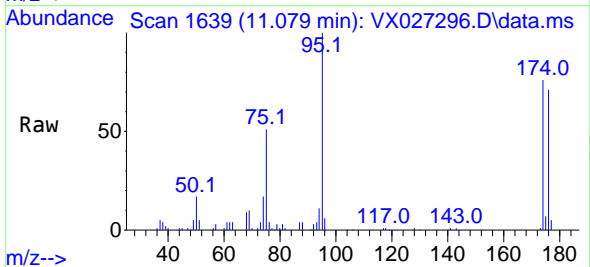
Instrument : MSVOA_X
 ClientSampleId : TT-038-IDWGW-20220303

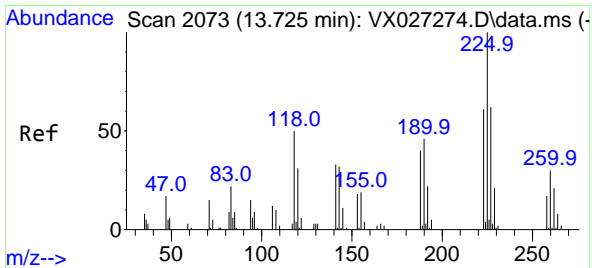
Tgt Ion: 75 Resp: 11167
 Ion Ratio Lower Upper
 75 100
 77 1.6 0.0 78.6



#77
 t-1,4-Dichloro-2-butene
 Concen: 42.599 ug/l
 RT: 11.079 min Scan# 1639
 Delta R.T. 0.061 min
 Lab File: VX027296.D
 Acq: 04 Mar 2022 13:07

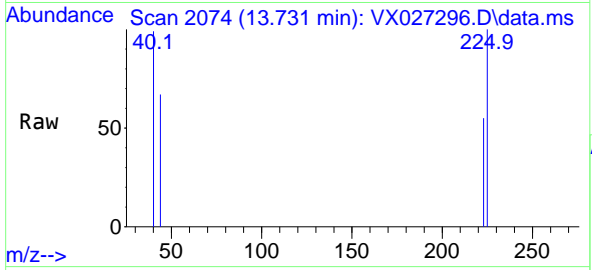
Tgt Ion: 75 Resp: 11167
 Ion Ratio Lower Upper
 75 100
 53 0.0 59.7 179.1#
 89 0.0 23.1 69.2#





#90
 Hexachlorobutadiene
 Concen: 0.225 ug/l
 RT: 13.731 min Scan# 2074
 Delta R.T. 0.006 min
 Lab File: VX027296.D
 Acq: 04 Mar 2022 13:07

Instrument : MSVOA_X
 ClientSampleId : TT-038-IDWGW-20220303



Tgt Ion: 225 Resp: 87

Ion	Ratio	Lower	Upper
225	100		
223	54.0	0.0	126.0
227	0.0	0.0	125.0

