

Data Path : Z:\voasrv\HPCHEM1\MSVOA_X\Data\VX030422\
 Data File : VX027307.D
 Acq On : 04 Mar 2022 17:27
 Operator : JC/MD
 Sample : N1783-01
 Misc : 5.0mL/MSVOA_X/WATER
 ALS Vial : 19 Sample Multiplier: 1

Instrument :
 MSVOA_X
 ClientSampleId :

Quant Time: Mar 05 00:45:32 2022
 Quant Method : Z:\voasrv\HPCHEM1\MSVOA_X\Method\82X022322W.M
 Quant Title : SW846 8260
 QLast Update : Wed Feb 23 13:06:57 2022
 Response via : Initial Calibration

Compound	R.T.	QIon	Response	Conc	Units	Dev(Min)

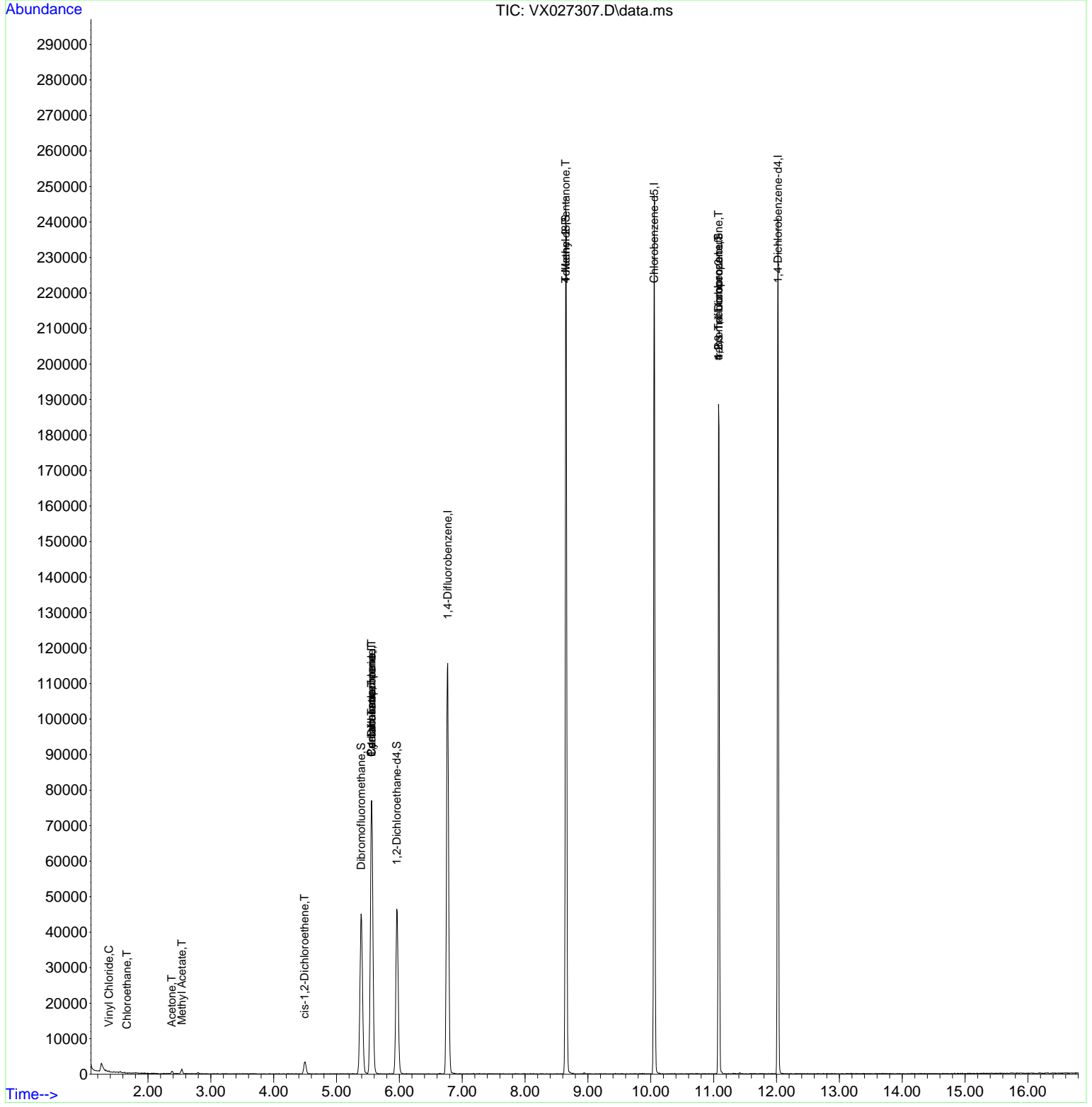
Internal Standards						
1) Pentafluorobenzene	5.556	168	75192	50.000	ug/l	0.00
34) 1,4-Difluorobenzene	6.769	114	123501	50.000	ug/l	0.00
63) Chlorobenzene-d5	10.055	117	110492	50.000	ug/l	0.00
72) 1,4-Dichlorobenzene-d4	12.024	152	51490	50.000	ug/l	0.00
System Monitoring Compounds						
33) 1,2-Dichloroethane-d4	5.958	65	45528	50.415	ug/l	0.00
Spiked Amount	50.000	Range 78 - 117	Recovery	=	100.840%	
35) Dibromofluoromethane	5.391	113	39216	51.156	ug/l	0.00
Spiked Amount	50.000	Range 75 - 124	Recovery	=	102.320%	
50) Toluene-d8	8.647	98	144183	50.301	ug/l	0.00
Spiked Amount	50.000	Range 92 - 112	Recovery	=	100.600%	
62) 4-Bromofluorobenzene	11.079	95	52284	47.520	ug/l	0.00
Spiked Amount	50.000	Range 83 - 123	Recovery	=	95.040%	
Target Compounds						
						Qvalue
4) Vinyl Chloride	1.380	62	154	0.221	ug/l #	51
5) Bromomethane	1.630	94	58	Below Cal	#	2
6) Chloroethane	1.666	64	124	0.290	ug/l #	43
16) Acetone	2.380	43	847	2.136	ug/l	100
18) Methyl Acetate	2.538	43	338	0.330	ug/l #	53
27) cis-1,2-Dichloroethene	4.489	96	2302	2.543	ug/l	86
31) Cyclohexane	5.556	56	1401	1.036	ug/l #	1
36) 1,1-Dichloropropene	5.556	75	5312	4.748	ug/l #	51
38) Carbon Tetrachloride	5.556	117	7350	6.299	ug/l #	17
51) 4-Methyl-2-Pentanone	8.647	43	560	0.456	ug/l #	1
76) 1,2,3-Trichloropropane	11.079	75	25944	25.015	ug/l #	40
81) trans-1,4-Dichloro-2-b...	11.079	75	25944	70.844	ug/l #	3

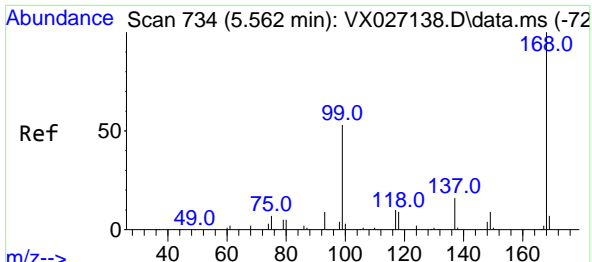
(#) = qualifier out of range (m) = manual integration (+) = signals summed

Data Path : Z:\voasrv\HPCHEM1\MSVOA_X\Data\VX030422\
 Data File : VX027307.D
 Acq On : 04 Mar 2022 17:27
 Operator : JC/MD
 Sample : N1783-01
 Misc : 5.0mL/MSVOA_X/WATER
 ALS Vial : 19 Sample Multiplier: 1

Instrument :
 MSVOA_X
 ClientSampleId :

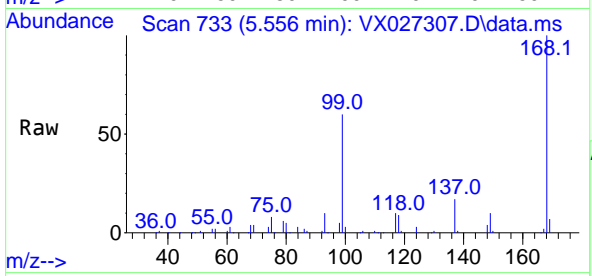
Quant Time: Mar 05 00:45:32 2022
 Quant Method : Z:\voasrv\HPCHEM1\MSVOA_X\Method\82X022322W.M
 Quant Title : SW846 8260
 QLast Update : Wed Feb 23 13:06:57 2022
 Response via : Initial Calibration



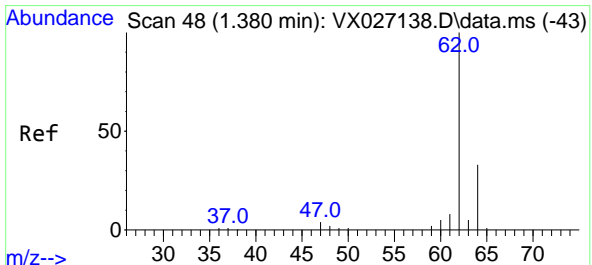
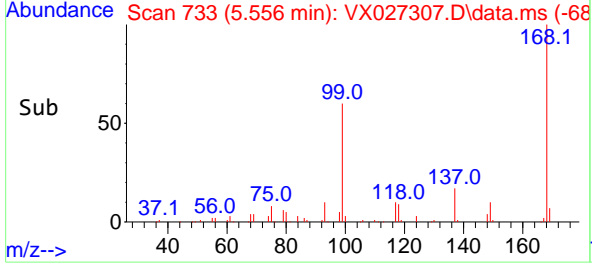
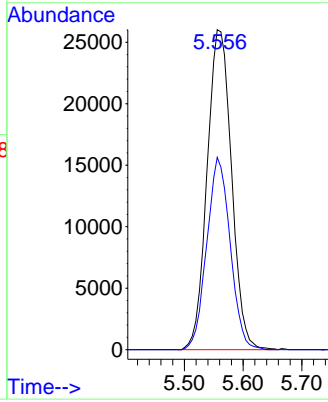


#1
 Pentafluorobenzene
 Concen: 50.000 ug/l
 RT: 5.556 min Scan# 71
 Delta R.T. -0.006 min
 Lab File: VX027307.D
 Acq: 04 Mar 2022 17:27

Instrument :
 MSVOA_X
 ClientSampleId :

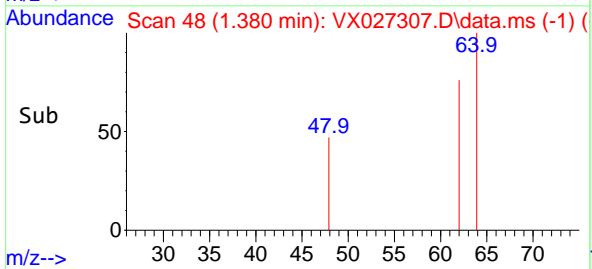
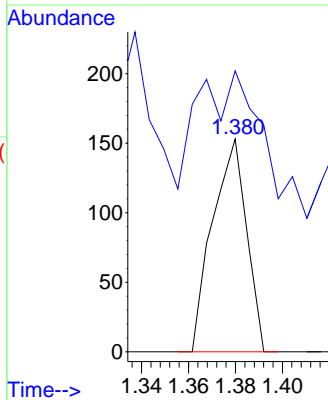
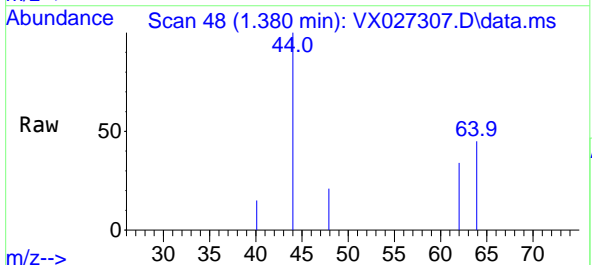


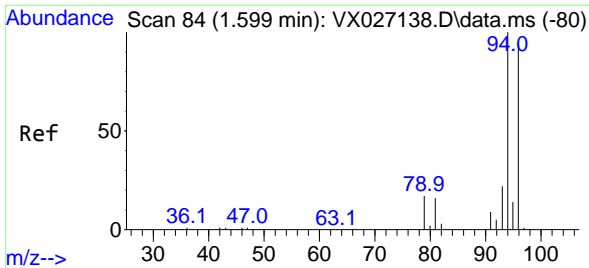
Tgt Ion:168 Resp: 75192
 Ion Ratio Lower Upper
 168 100
 99 60.1 50.3 75.5



#4
 Vinyl Chloride
 Concen: 0.221 ug/l
 RT: 1.380 min Scan# 48
 Delta R.T. -0.000 min
 Lab File: VX027307.D
 Acq: 04 Mar 2022 17:27

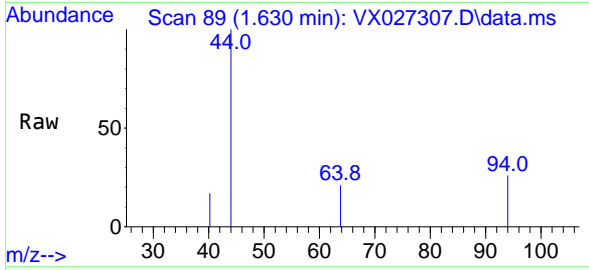
Tgt Ion: 62 Resp: 154
 Ion Ratio Lower Upper
 62 100
 64 60.1 26.2 39.2#



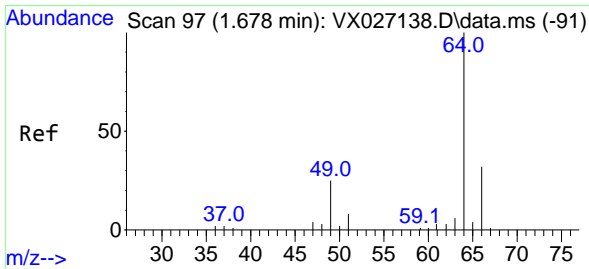
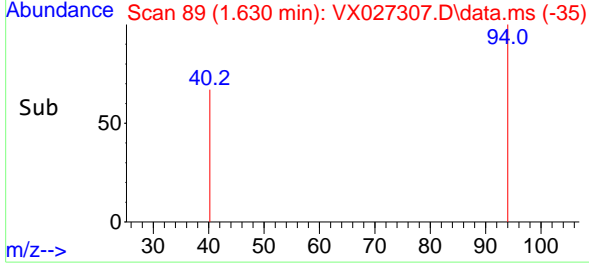
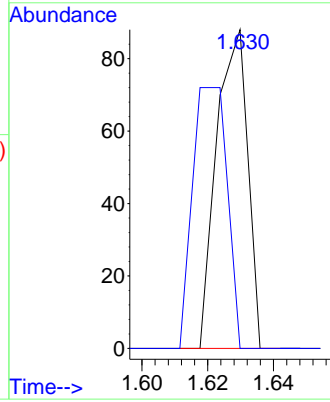


#5
 Bromomethane
 Concen: Below Cal
 RT: 1.630 min Scan# 84
 Delta R.T. 0.031 min
 Lab File: VX027307.D
 Acq: 04 Mar 2022 17:27

Instrument :
 MSVOA_X
 ClientSampleId :

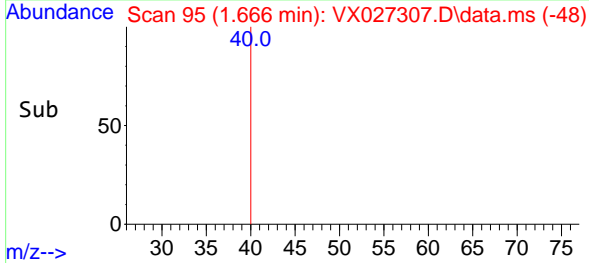
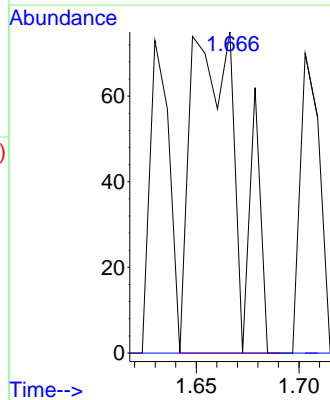
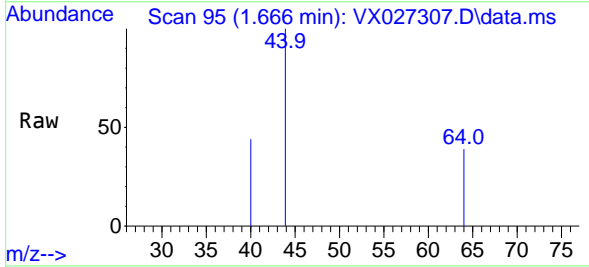


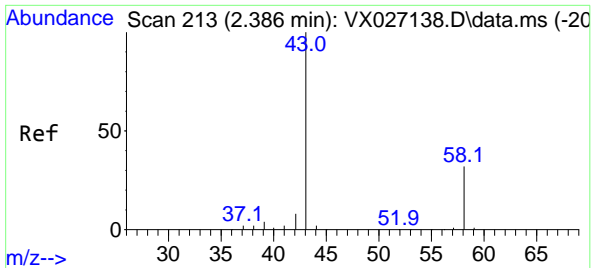
Tgt Ion: 94 Resp: 58
 Ion Ratio Lower Upper
 94 100
 96 0.0 75.9 113.9#



#6
 Chloroethane
 Concen: 0.290 ug/l
 RT: 1.666 min Scan# 95
 Delta R.T. -0.012 min
 Lab File: VX027307.D
 Acq: 04 Mar 2022 17:27

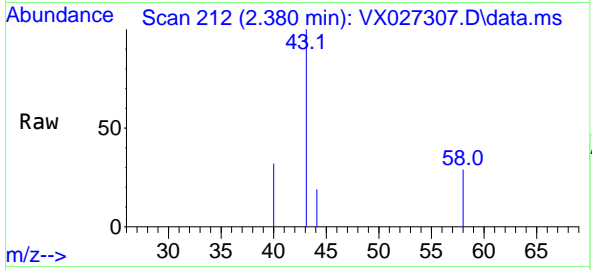
Tgt Ion: 64 Resp: 124
 Ion Ratio Lower Upper
 64 100
 66 0.0 25.4 38.2#



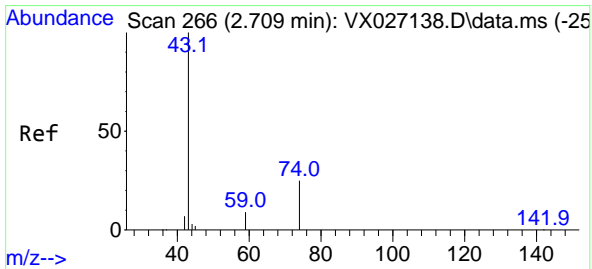
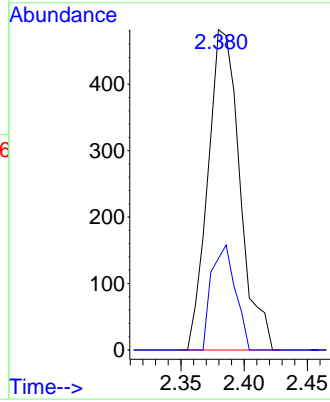
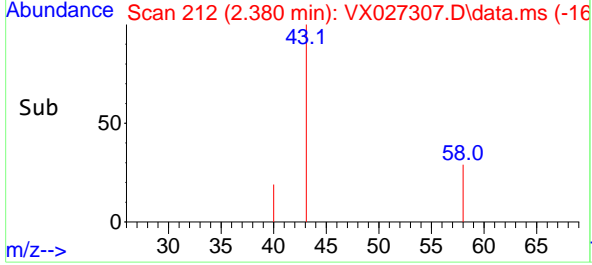


#16
 Acetone
 Concen: 2.136 ug/l
 RT: 2.380 min Scan# 213
 Delta R.T. -0.006 min
 Lab File: VX027307.D
 Acq: 04 Mar 2022 17:27

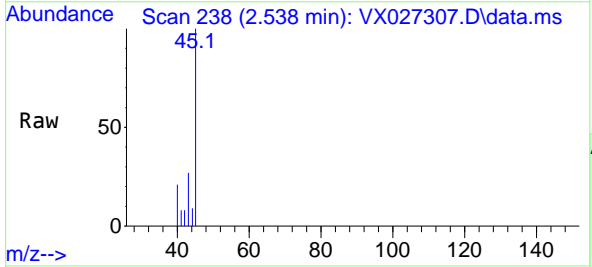
Instrument : MSVOA_X
 Client SampleId :



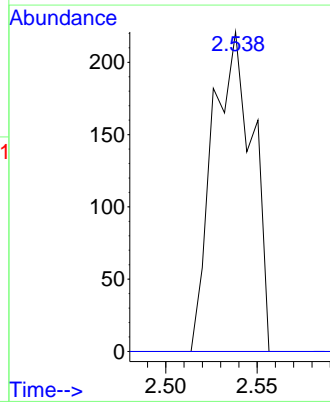
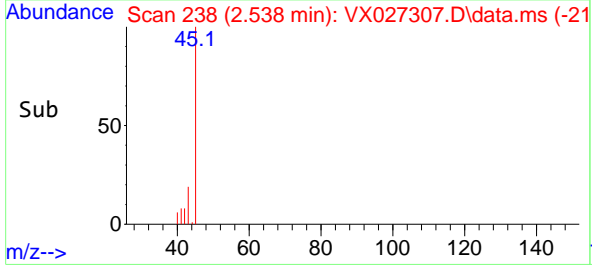
Tgt Ion: 43 Resp: 847
 Ion Ratio Lower Upper
 43 100
 58 28.6 23.0 34.6

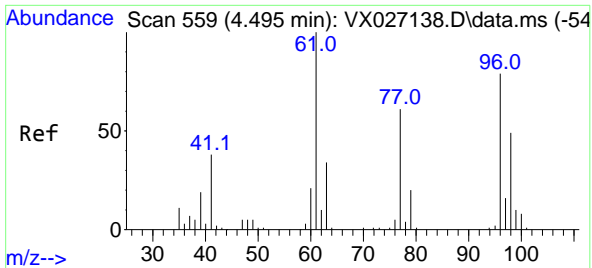


#18
 Methyl Acetate
 Concen: 0.330 ug/l
 RT: 2.538 min Scan# 238
 Delta R.T. -0.171 min
 Lab File: VX027307.D
 Acq: 04 Mar 2022 17:27



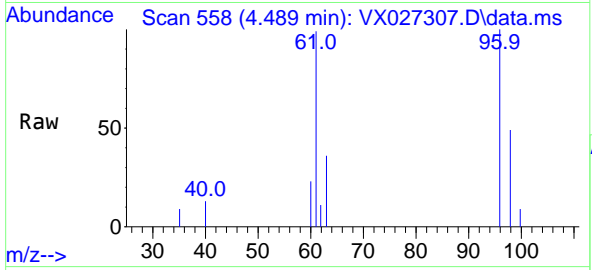
Tgt Ion: 43 Resp: 338
 Ion Ratio Lower Upper
 43 100
 74 0.0 18.3 27.5#





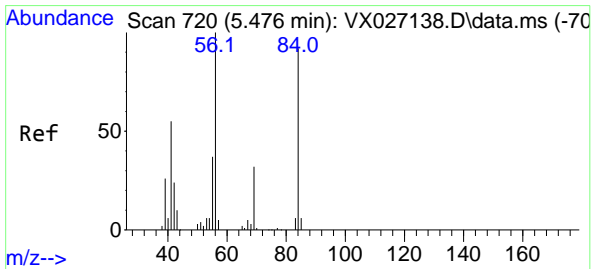
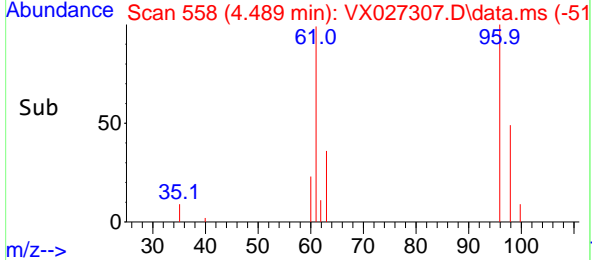
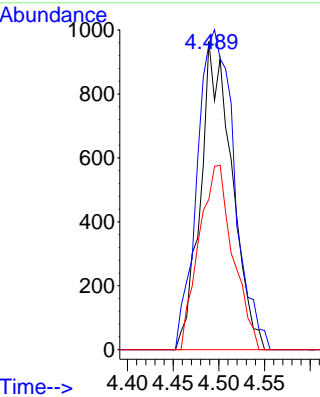
#27
 cis-1,2-Dichloroethene
 Concen: 2.543 ug/l
 RT: 4.489 min Scan# 511
 Delta R.T. -0.006 min
 Lab File: VX027307.D
 Acq: 04 Mar 2022 17:27

Instrument : MSVOA_X
 ClientSampleId :

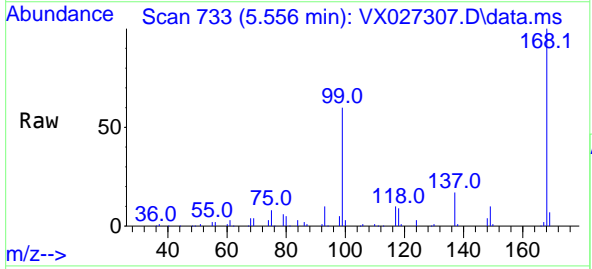


Tgt Ion: 96 Resp: 2302

Ion	Ratio	Lower	Upper
96	100		
61	122.5	0.0	296.6
98	64.7	0.0	128.8

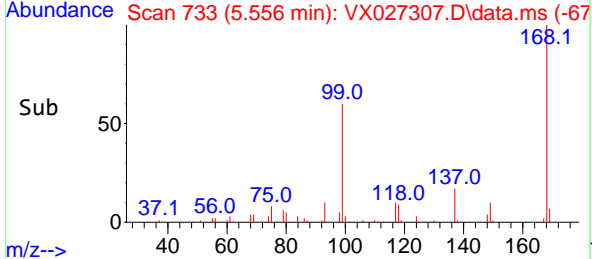
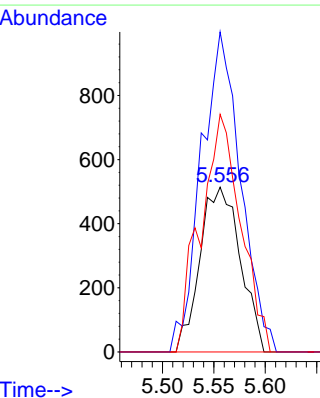


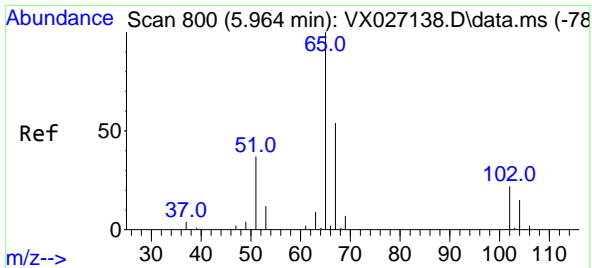
#31
 Cyclohexane
 Concen: 1.036 ug/l
 RT: 5.556 min Scan# 733
 Delta R.T. 0.080 min
 Lab File: VX027307.D
 Acq: 04 Mar 2022 17:27



Tgt Ion: 56 Resp: 1401

Ion	Ratio	Lower	Upper
56	100		
69	194.2	25.8	38.6#
84	144.2	68.9	103.3#

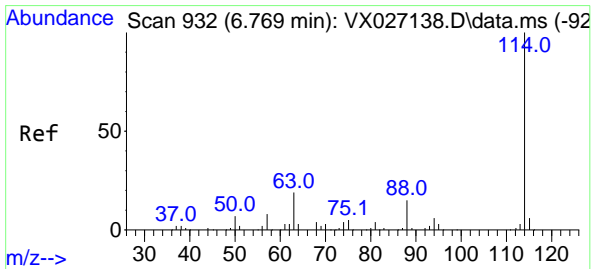
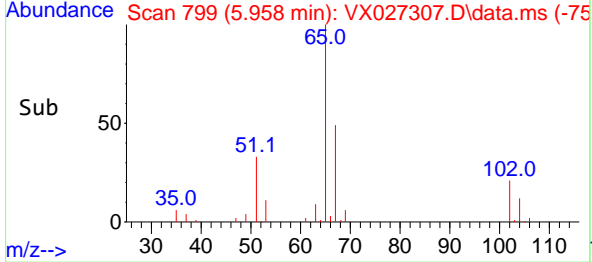
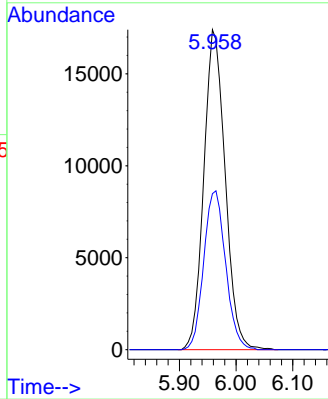
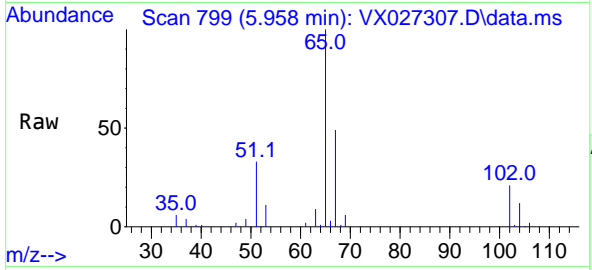




#33
 1,2-Dichloroethane-d4
 Concen: 50.415 ug/l
 RT: 5.958 min Scan# 799
 Delta R.T. -0.006 min
 Lab File: VX027307.D
 Acq: 04 Mar 2022 17:27

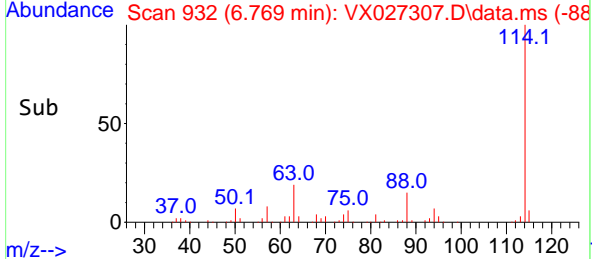
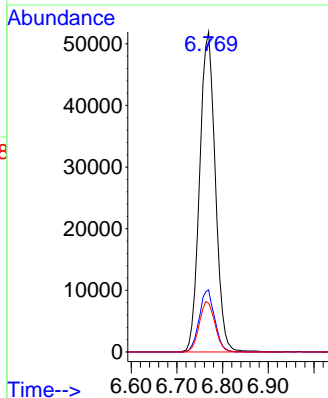
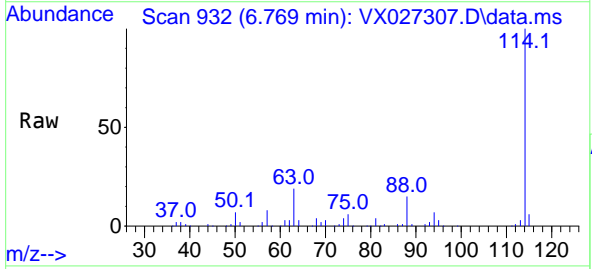
Instrument : MSVOA_X
 ClientSampleId :

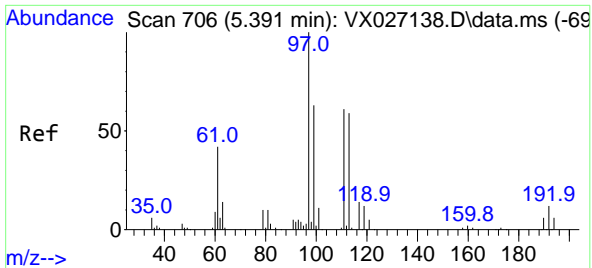
Tgt Ion: 65 Resp: 45528
 Ion Ratio Lower Upper
 65 100
 67 50.8 0.0 100.8



#34
 1,4-Difluorobenzene
 Concen: 50.000 ug/l
 RT: 6.769 min Scan# 932
 Delta R.T. 0.000 min
 Lab File: VX027307.D
 Acq: 04 Mar 2022 17:27

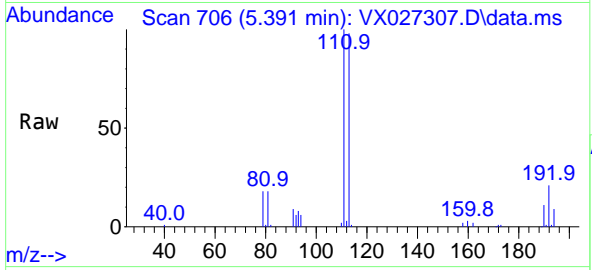
Tgt Ion: 114 Resp: 123501
 Ion Ratio Lower Upper
 114 100
 63 19.4 0.0 42.8
 88 15.3 0.0 33.0





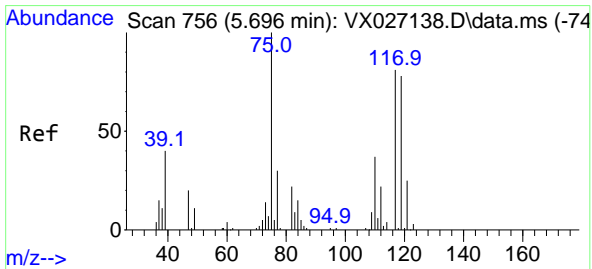
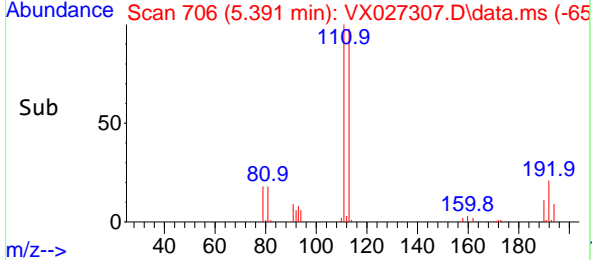
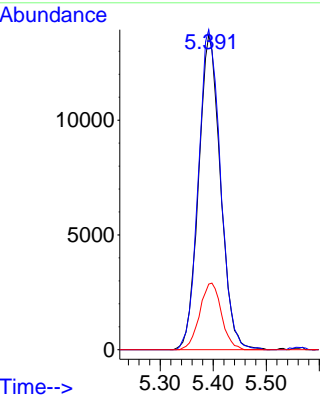
#35
 Dibromofluoromethane
 Concen: 51.156 ug/l
 RT: 5.391 min Scan# 706
 Delta R.T. 0.000 min
 Lab File: VX027307.D
 Acq: 04 Mar 2022 17:27

Instrument : MSVOA_X
 ClientSampleId :

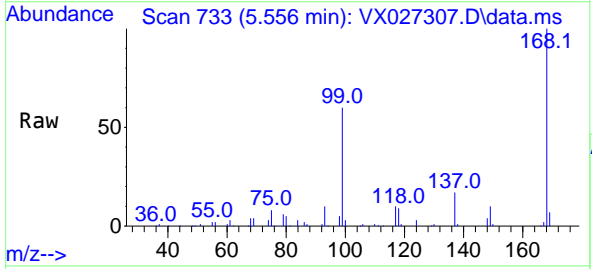


Tgt Ion:113 Resp: 39216

Ion	Ratio	Lower	Upper
113	100		
111	102.5	81.2	121.8
192	21.1	15.0	22.4

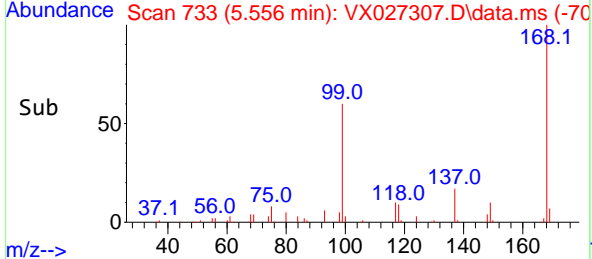
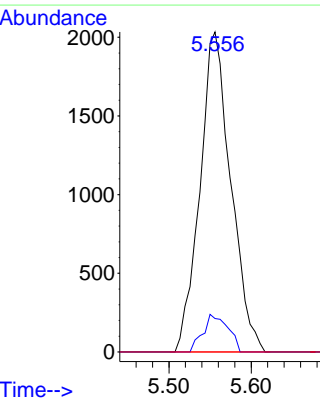


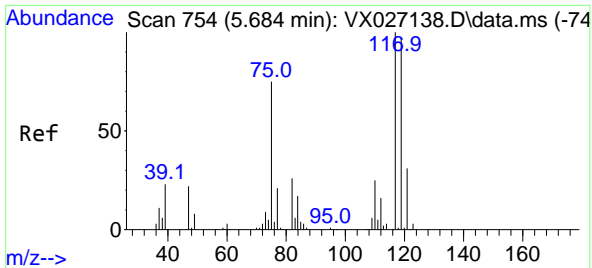
#36
 1,1-Dichloropropene
 Concen: 4.748 ug/l
 RT: 5.556 min Scan# 733
 Delta R.T. -0.140 min
 Lab File: VX027307.D
 Acq: 04 Mar 2022 17:27



Tgt Ion: 75 Resp: 5312

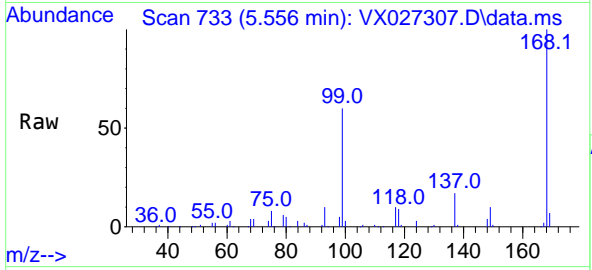
Ion	Ratio	Lower	Upper
75	100		
110	9.5	17.2	51.6#
77	0.0	24.6	36.8#



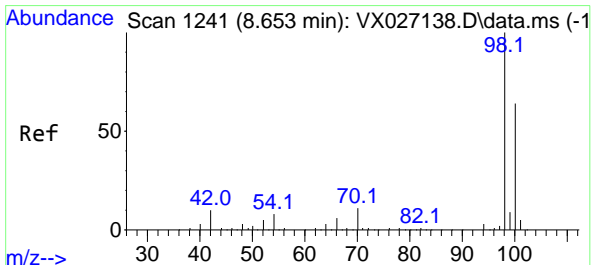
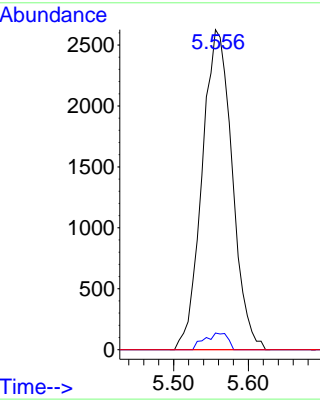
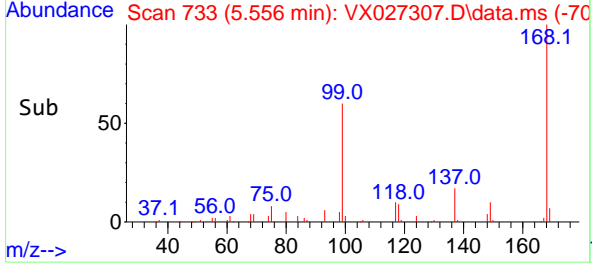


#38
 Carbon Tetrachloride
 Concen: 6.299 ug/l
 RT: 5.556 min Scan# 71
 Delta R.T. -0.128 min
 Lab File: VX027307.D
 Acq: 04 Mar 2022 17:27

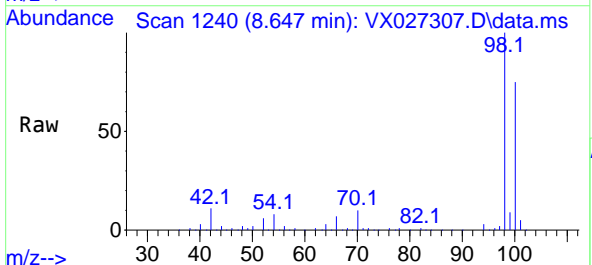
Instrument :
 MSVOA_X
 ClientSampleId :



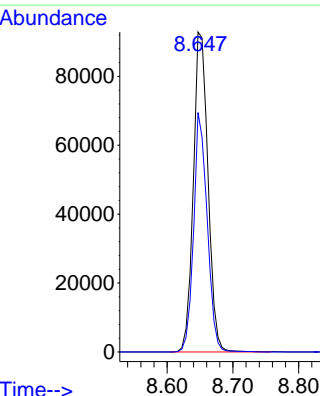
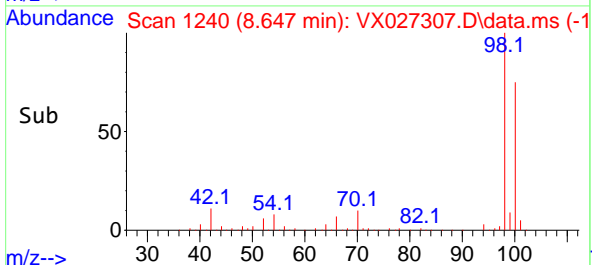
Tgt Ion:117 Resp: 7350
 Ion Ratio Lower Upper
 117 100
 119 5.2 74.7 112.1#
 121 0.0 25.4 38.0#

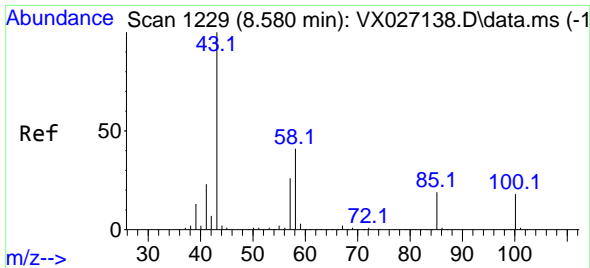


#50
 Toluene-d8
 Concen: 50.301 ug/l
 RT: 8.647 min Scan# 1240
 Delta R.T. -0.006 min
 Lab File: VX027307.D
 Acq: 04 Mar 2022 17:27



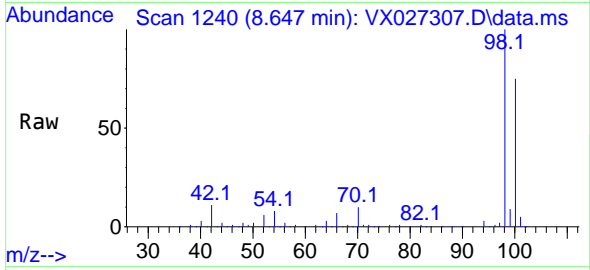
Tgt Ion: 98 Resp: 144183
 Ion Ratio Lower Upper
 98 100
 100 69.0 53.2 79.8



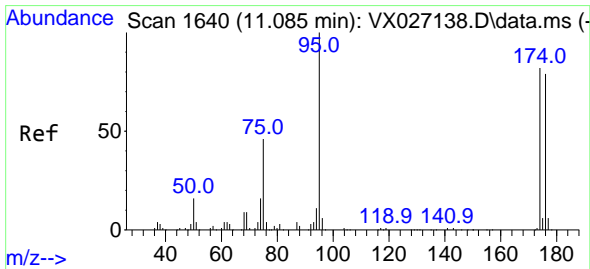
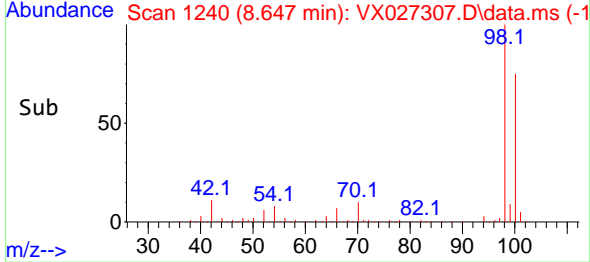
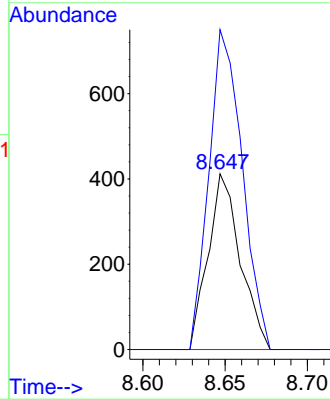


#51
 4-Methyl-2-Pentanone
 Concen: 0.456 ug/l
 RT: 8.647 min Scan# 11
 Delta R.T. 0.067 min
 Lab File: VX027307.D
 Acq: 04 Mar 2022 17:27

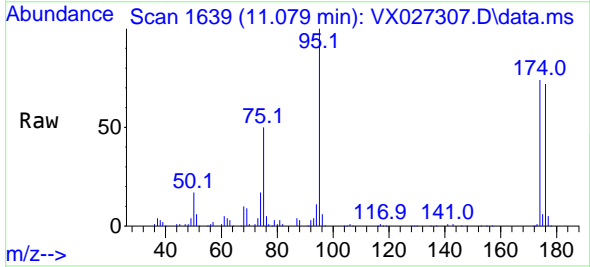
Instrument :
 MSVOA_X
 ClientSampleId :



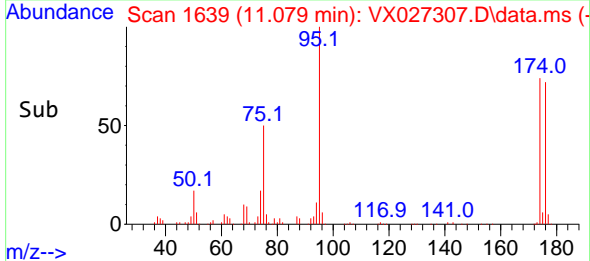
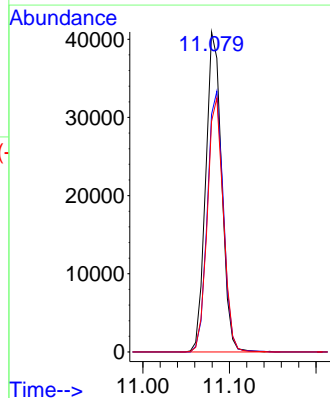
Tgt Ion: 43 Resp: 560
 Ion Ratio Lower Upper
 43 100
 58 188.9 30.5 45.7#

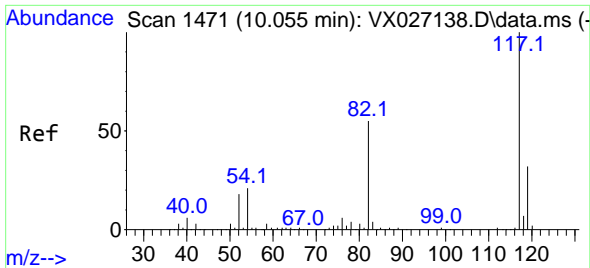


#62
 4-Bromofluorobenzene
 Concen: 47.520 ug/l
 RT: 11.079 min Scan# 1639
 Delta R.T. -0.006 min
 Lab File: VX027307.D
 Acq: 04 Mar 2022 17:27



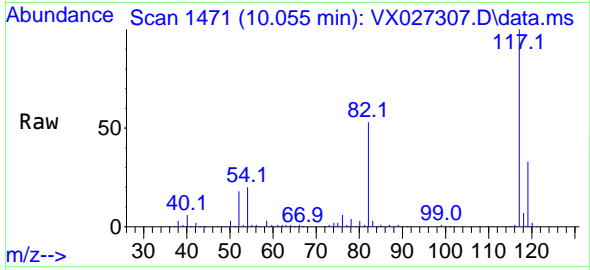
Tgt Ion: 95 Resp: 52284
 Ion Ratio Lower Upper
 95 100
 174 81.9 0.0 148.6
 176 79.6 0.0 141.4



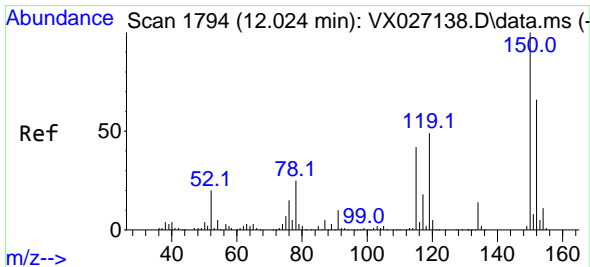
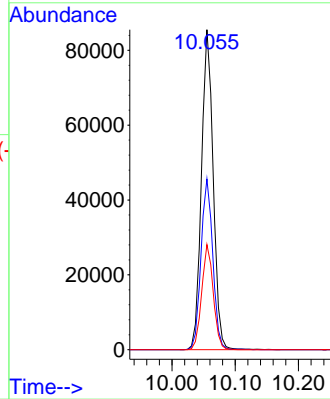
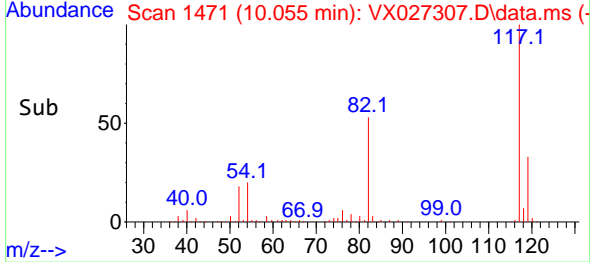


#63
 Chlorobenzene-d5
 Concen: 50.000 ug/l
 RT: 10.055 min Scan# 1471
 Delta R.T. 0.000 min
 Lab File: VX027307.D
 Acq: 04 Mar 2022 17:27

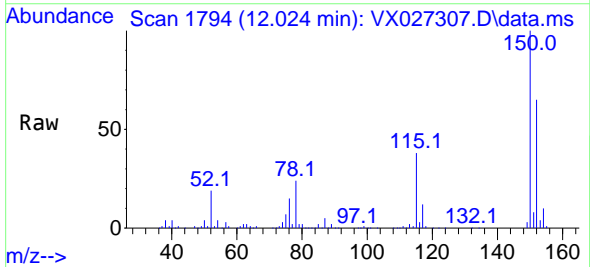
Instrument :
 MSVOA_X
 ClientSampleId :



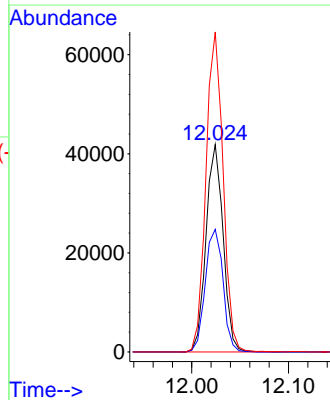
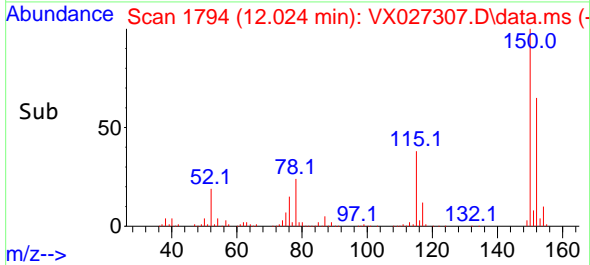
Tgt Ion:117 Resp: 110492
 Ion Ratio Lower Upper
 117 100
 82 53.3 45.2 67.8
 119 32.8 26.2 39.2

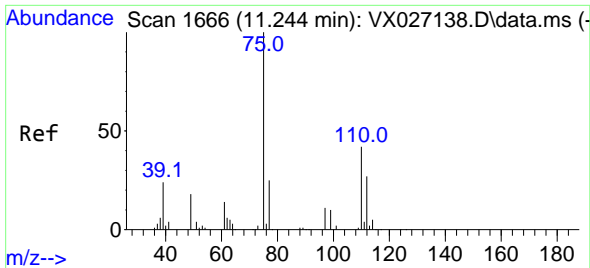


#72
 1,4-Dichlorobenzene-d4
 Concen: 50.000 ug/l
 RT: 12.024 min Scan# 1794
 Delta R.T. 0.000 min
 Lab File: VX027307.D
 Acq: 04 Mar 2022 17:27



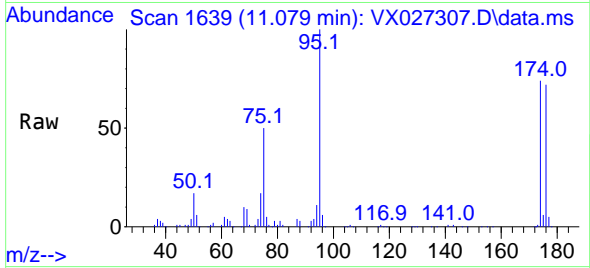
Tgt Ion:152 Resp: 51490
 Ion Ratio Lower Upper
 152 100
 115 61.3 44.2 132.6
 150 154.7 0.0 348.2



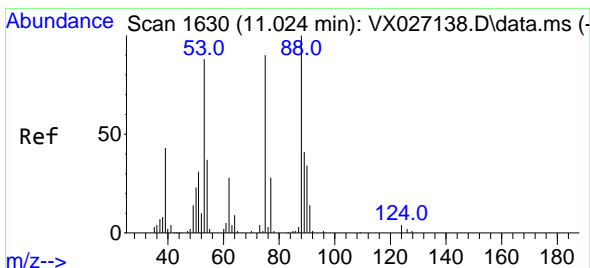
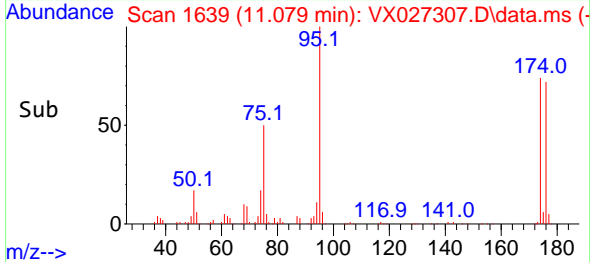
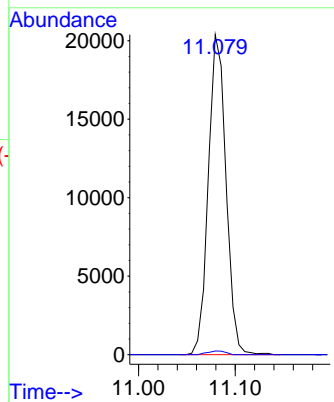


#76
 1,2,3-Trichloropropane
 Concen: 25.015 ug/l
 RT: 11.079 min Scan# 1639
 Delta R.T. -0.165 min
 Lab File: VX027307.D
 Acq: 04 Mar 2022 17:27

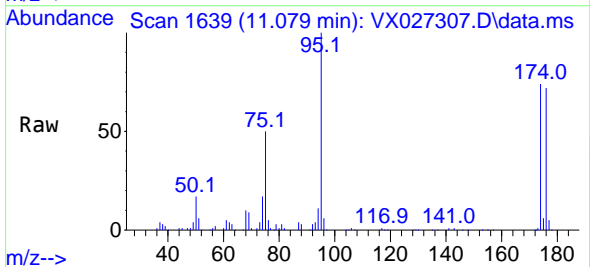
Instrument : MSVOA_X
 ClientSampleId :



Tgt Ion: 75 Resp: 25944
 Ion Ratio Lower Upper
 75 100
 77 1.2 18.3 54.8#



#81
 trans-1,4-Dichloro-2-butene
 Concen: 70.844 ug/l
 RT: 11.079 min Scan# 1639
 Delta R.T. 0.055 min
 Lab File: VX027307.D
 Acq: 04 Mar 2022 17:27



Tgt Ion: 75 Resp: 25944
 Ion Ratio Lower Upper
 75 100
 53 0.0 94.0 141.0#
 89 0.0 37.0 55.4#

