

Data Path : Z:\voasrv\HPCHEM1\MSVOA_X\Data\VX030422\
 Data File : VX027303.D
 Acq On : 04 Mar 2022 15:54
 Operator : JC/MD
 Sample : N1793-10
 Misc : 5.0mL/MSVOA_X/WATER
 ALS Vial : 15 Sample Multiplier: 1

Instrument :
 MSVOA_X
 ClientSampleId :
 SB-4

Integration Parameters: RTEINT.P

Integrator: RTE
 Smoothing : ON Filtering: 5
 Sampling : 1 Min Area: 3 % of largest Peak
 Start Thrs: 0.2 Max Peaks: 100
 Stop Thrs : 0 Peak Location: TOP

If leading or trailing edge < 100 prefer < Baseline drop else tangent >
 Peak separation: 5

Method : Z:\voasrv\HPCHEM1\MSVOA_X\Method\82X022322W.M
 Title : SW846 8260

Signal : TIC: VX027303.D\data.ms

peak #	R.T. min	first scan	max scan	last scan	PK TY	peak height	corr. area	corr. % max.	% of total
1	1.264	22	29	43	rVB3	1935	5537	1.48%	0.269%
2	5.391	695	706	723	rBV	45710	130505	34.95%	6.333%
3	5.556	723	733	747	rVV	78580	220181	58.96%	10.685%
4	5.958	790	799	812	rBV	46412	123944	33.19%	6.015%
5	6.763	922	931	947	rBV	120209	281700	75.44%	13.671%
6	8.653	1234	1241	1248	rBV	238745	373419	100.00%	18.122%
7	8.720	1248	1252	1259	rVB	9637	13975	3.74%	0.678%
8	10.055	1464	1471	1480	rBV	258771	334705	89.63%	16.243%
9	11.085	1634	1640	1653	rVB	195595	258319	69.18%	12.536%
10	12.024	1789	1794	1804	rBV	266109	318355	85.25%	15.449%

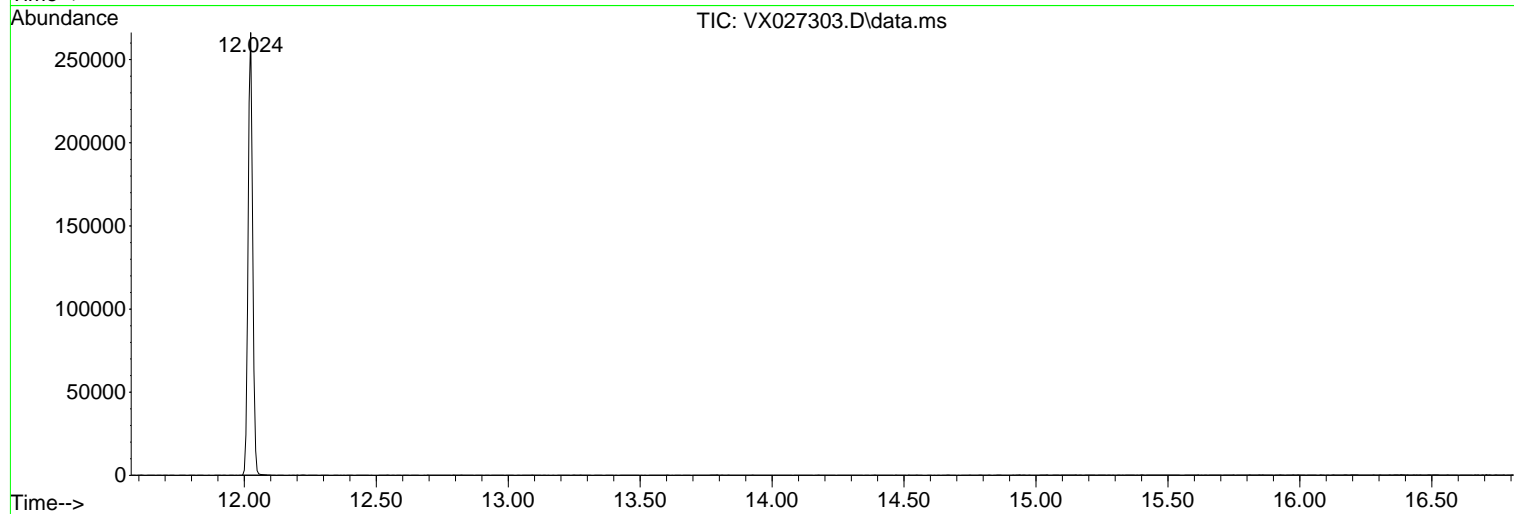
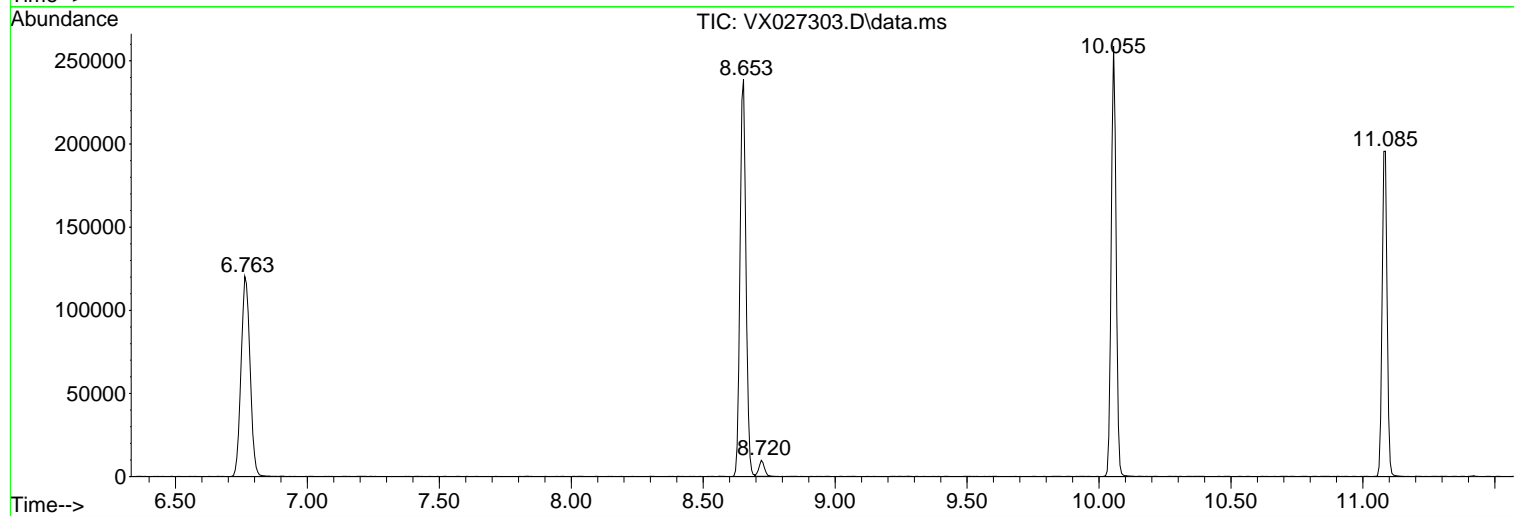
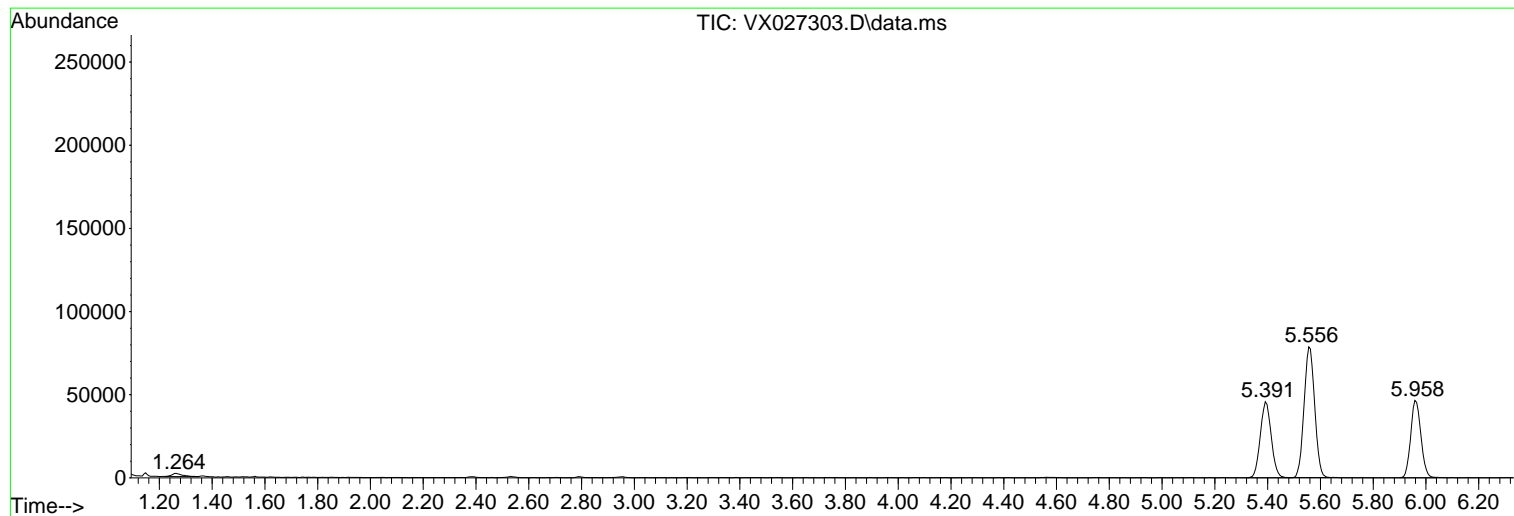
Sum of corrected areas: 2060640

Data Path : Z:\voasrv\HPCHEM1\MSVOA_X\Data\VX030422\
Data File : VX027303.D
Acq On : 04 Mar 2022 15:54
Operator : JC/MD
Sample : N1793-10
Misc : 5.0mL/MSVOA_X/WATER
ALS Vial : 15 Sample Multiplier: 1

Instrument :
MSVOA_X
ClientSampleId :
SB-4

Quant Method : Z:\voasrv\HPCHEM1\MSVOA_X\Method\82X022322W.M
Quant Title : SW846 8260

TIC Library : C:\Database\NIST0.L
TIC Integration Parameters: LSCINT.P



Library Search Compound Report

Data Path : Z:\voasrv\HPCHEM1\MSVOA_X\Data\VX030422\
Data File : VX027303.D
Acq On : 04 Mar 2022 15:54
Operator : JC/MD
Sample : N1793-10
Misc : 5.0mL/MSVOA_X/WATER
ALS Vial : 15 Sample Multiplier: 1

Instrument :
MSVOA_X
ClientSampleId :
SB-4

Quant Method : Z:\voasrv\HPCHEM1\MSVOA_X\Method\82X022322W.M
Quant Title : SW846 8260

TIC Library : C:\Database\NIST20.L
TIC Integration Parameters: LSCINT.P

No Library Search Compounds Detected

Data Path : Z:\voasrv\HPCHEM1\MSVOA_X\Data\VX030422\
Data File : VX027303.D
Acq On : 04 Mar 2022 15:54
Operator : JC/MD
Sample : N1793-10
Misc : 5.0mL/MSVOA_X/WATER
ALS Vial : 15 Sample Multiplier: 1

Instrument :
MSVOA_X
ClientSampleId :
SB-4

Quant Method : Z:\voasrv\HPCHEM1\MSVOA_X\Method\82X022322W.M
Quant Title : SW846 8260

TIC Library : C:\Database\NIST20.L
TIC Integration Parameters: LSCINT.P

TIC Top Hit name	RT	EstConc	Units	Response	#	RT	Resp	Conc
------------------	----	---------	-------	----------	---	----	------	------
