

Data Path : Z:\VOASRV\HPCHEM1\MSVOA X\DATA\VX030519\
 Data File : VX007840.D
 Acq On : 05 Mar 2019 16:34
 Operator : JC/SP
 Sample : K1659-13
 Misc : 5.0mL/MSVOA X/WATER
 ALS Vial : 15 Sample Multiplier: 1

Instrument :
 MSVOA_X
 ClientSampleId :
 M2-T5-UV(POSTHYPO)

Quant Time: Mar 06 00:11:45 2019
 Quant Method : Z:\VOASRV\HPCHEM1\MSVOA_X\METHOD\82X022519W.M
 Quant Title : SW846 8260
 QLast Update : Tue Feb 26 01:53:13 2019
 Response via : Initial Calibration

Internal Standards	R.T.	QIon	Response	Conc	Units	Dev(Min)
1) Pentafluorobenzene	5.61	168	102122	50.00	ug/l	-0.05
34) 1,4-Difluorobenzene	6.83	114	71842	50.00	ug/l	-0.03
63) Chlorobenzene-d5	10.11	117	173388	50.00	ug/l	0.00
72) 1,4-Dichlorobenzene-d4	12.08	152	132114	50.00	ug/l	0.00

System Monitoring Compounds

33) 1,2-Dichloroethane-d4	6.02	65	4876	3.85	ug/l	-0.04
Spiked Amount	50.000		Recovery	=	7.70%	
35) Dibromofluoromethane	5.44	113	3833	7.98	ug/l	-0.06
Spiked Amount	50.000		Recovery	=	15.96%	
50) Toluene-d8	8.70	98	193852	105.44	ug/l	-0.01
Spiked Amount	50.000		Recovery	=	210.88%	
62) 4-Bromofluorobenzene	11.13	95	109395	162.11	ug/l	0.00
Spiked Amount	50.000		Recovery	=	324.22%	

Target Compounds

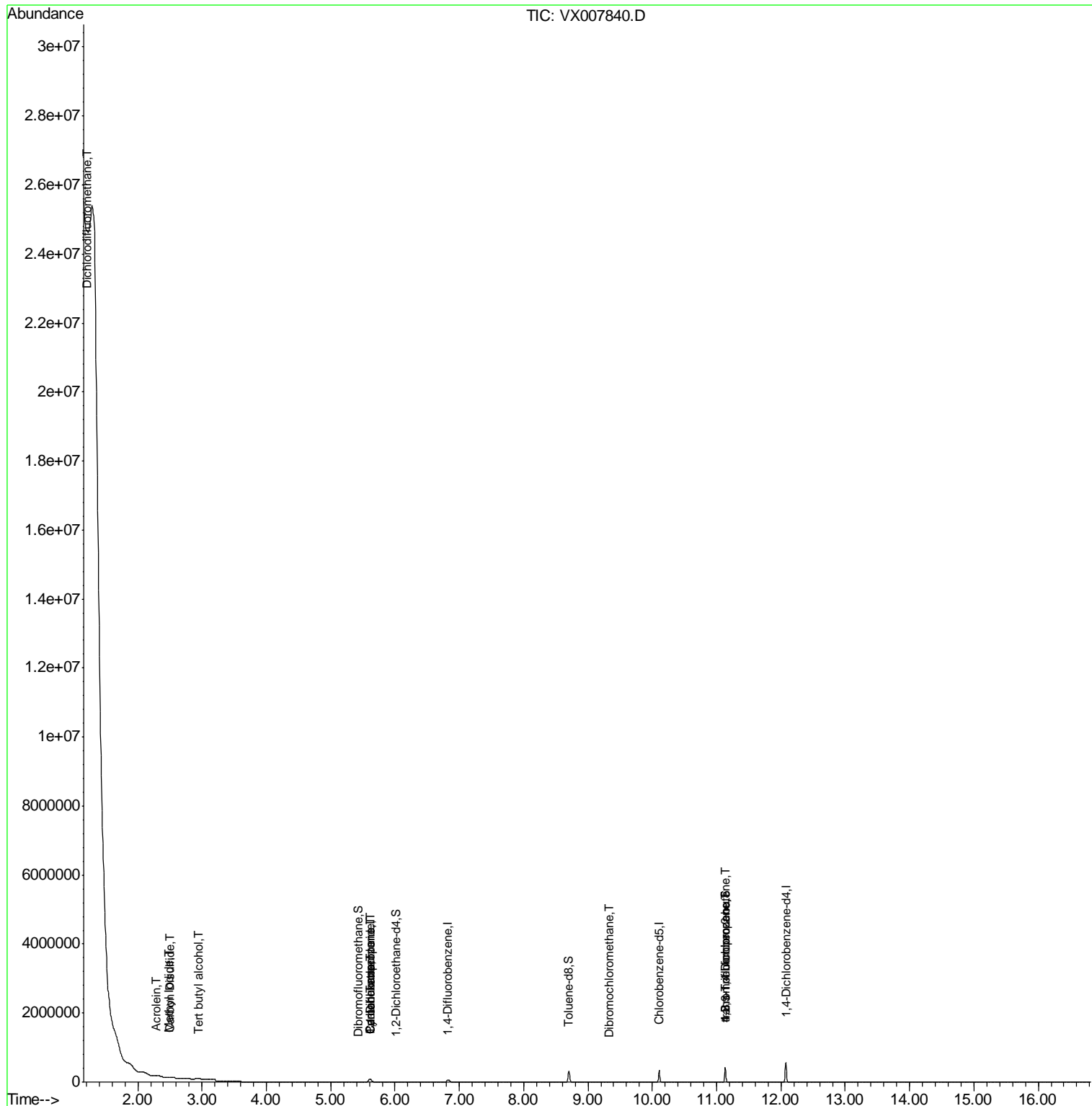
					Qvalue	
2) Dichlorodifluoromethane	1.21	85	1401	1.489	ug/l	# 1
5) Bromomethane	1.61	94	279	Below	Cal	# 59
10) Methyl Iodide	2.48	142	631	0.511	ug/l	# 88
11) Tert butyl alcohol	2.96	59	149	0.621	ug/l	# 73
13) Acrolein	2.28	56	47	0.220	ug/l	# 66
17) Carbon Disulfide	2.50	76	657	0.264	ug/l	99
31) Cyclohexane	5.61	56	1678	0.955	ug/l	# 1
36) 1,1-Dichloropropene	5.61	75	6527	10.106	ug/l	# 44
38) Carbon Tetrachloride	5.61	117	8771	13.519	ug/l	# 19
60) Dibromochloromethane	9.34	129	199	0.394	ug/l	# 12
76) 1,2,3-Trichloropropane	11.13	75	51363	18.239	ug/l	# 32
81) trans-1,4-Dichloro-2-buten	11.13	75	51363	48.944	ug/l	# 9

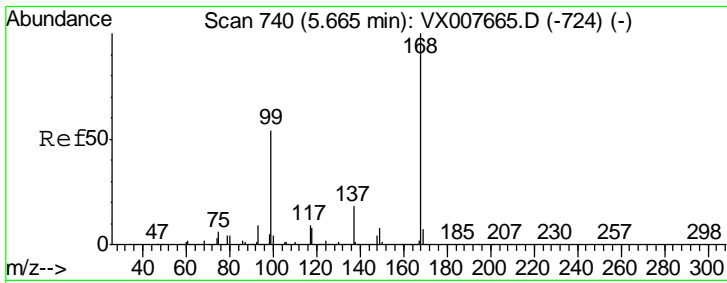
(#) = qualifier out of range (m) = manual integration (+) = signals summed

Data Path : Z:\VOASRV\HPCHEM1\MSVOA X\DATA\VX030519\
 Data File : VX007840.D
 Acq On : 05 Mar 2019 16:34
 Operator : JC/SP
 Sample : K1659-13
 Misc : 5.0mL/MSVOA X/WATER
 ALS Vial : 15 Sample Multiplier: 1

Instrument :
 MSVOA_X
 ClientSampleId :
 M2-T5-UV(POSTHYPO)

Quant Time: Mar 06 00:11:45 2019
 Quant Method : Z:\VOASRV\HPCHEM1\MSVOA_X\METHOD\82X022519W.M
 Quant Title : SW846 8260
 QLast Update : Tue Feb 26 01:53:13 2019
 Response via : Initial Calibration

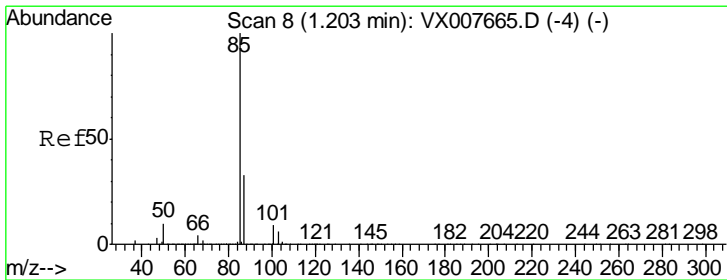
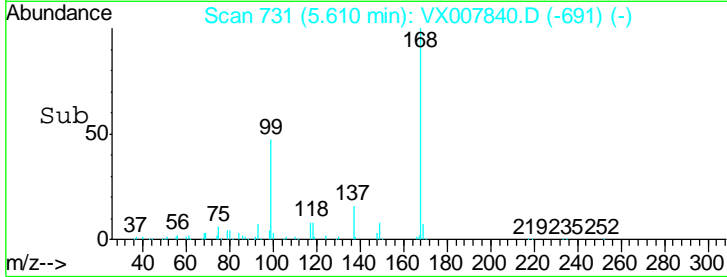
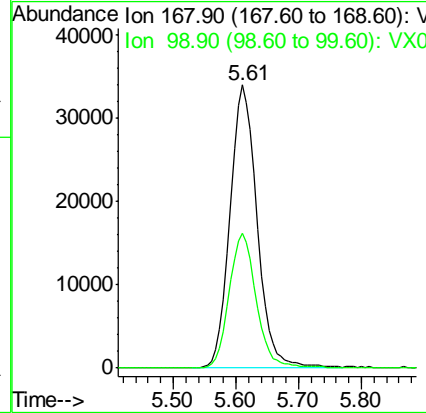
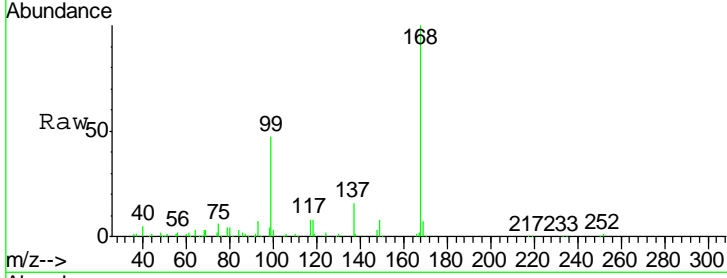




#1
 Pentafluorobenzene
 Concen: 50.000 ug/l
 RT: 5.61 min Scan# 731
 Delta R.T. -0.05 min
 Lab File: VX007840.D
 Acq: 05 Mar 2019 16:34

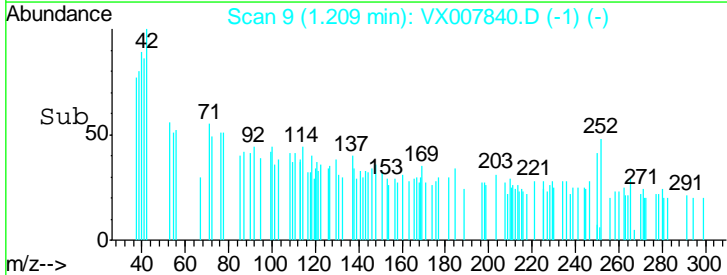
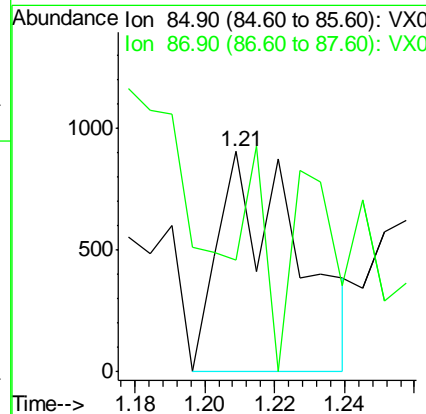
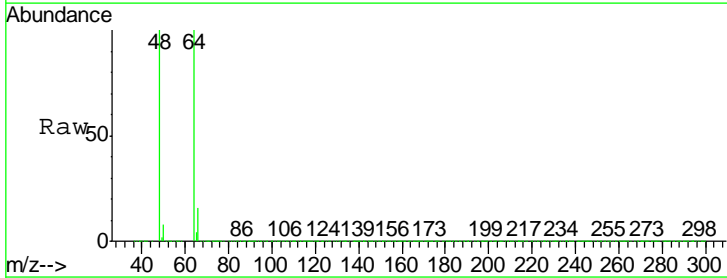
Instrument : MSVOA_X
 ClientSampleId : M2-T5-UV(POSTHYPO)

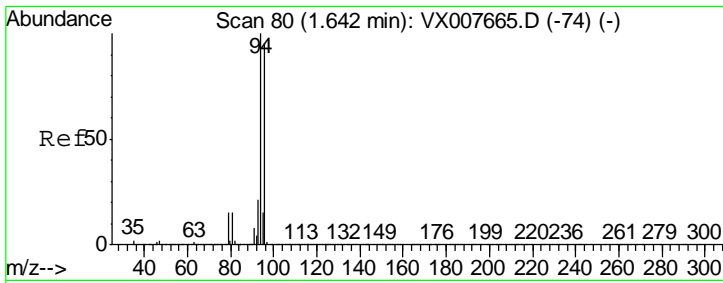
Tgt Ion	Resp	Lower	Upper
168	102122		
99	47.4	37.9	56.9



#2
 Dichlorodifluoromethane
 Concen: 1.489 ug/l
 RT: 1.21 min Scan# 9
 Delta R.T. 0.01 min
 Lab File: VX007840.D
 Acq: 05 Mar 2019 16:34

Tgt Ion	Resp	Lower	Upper
85	1401		
87	122.9	15.8	47.4

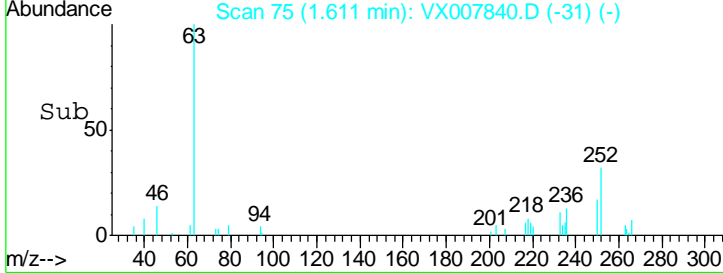
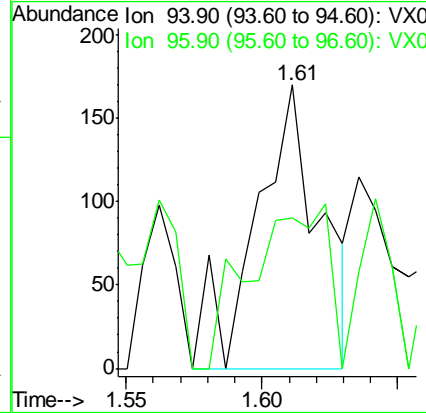
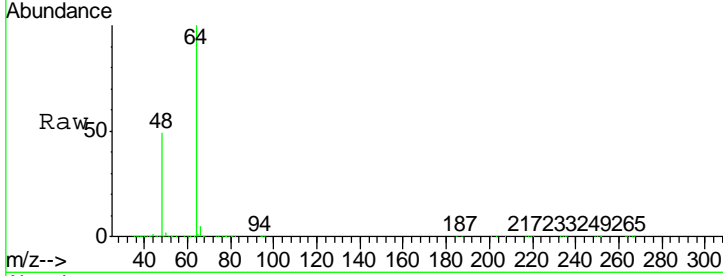




#5
 Bromomethane
 Concen: Below Cal
 RT: 1.61 min Scan# 75
 Delta R.T. -0.03 min
 Lab File: VX007840.D
 Acq: 05 Mar 2019 16:34

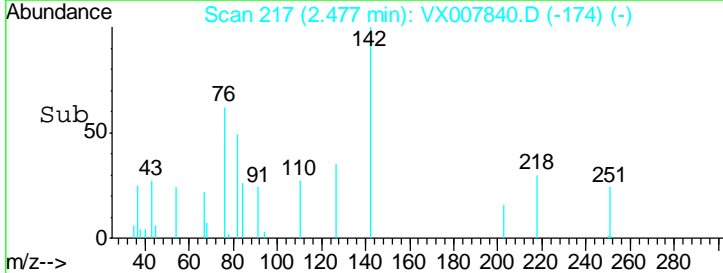
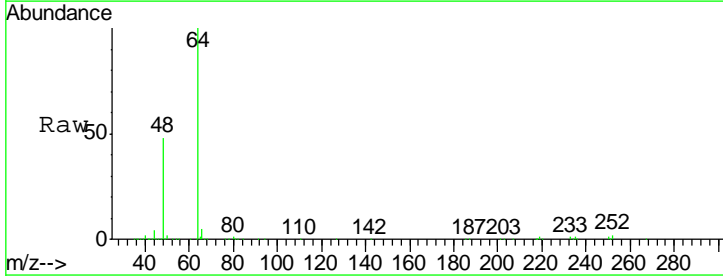
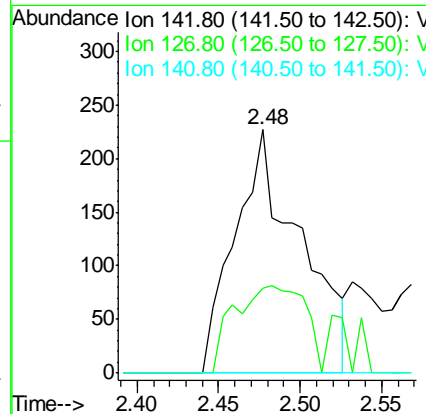
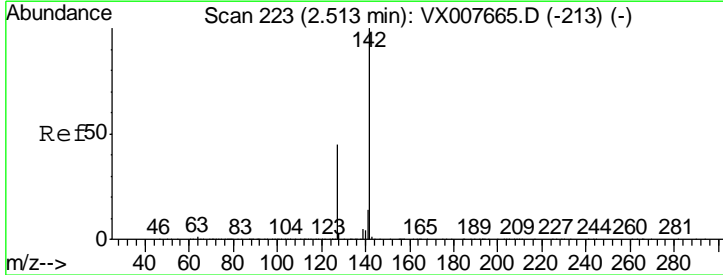
Instrument :
 MSVOA_X
ClientSampled :
 M2-T5-UV(POSTHYPO)

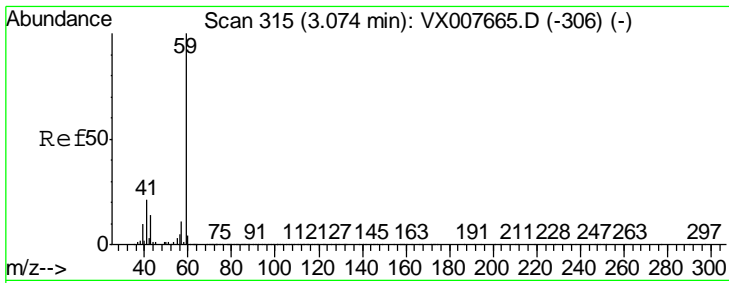
Tgt Ion	Resp	Lower	Upper
94	100		
96	52.9	73.9	110.9#



#10
 Methyl Iodide
 Concen: 0.511 ug/l
 RT: 2.48 min Scan# 217
 Delta R.T. -0.04 min
 Lab File: VX007840.D
 Acq: 05 Mar 2019 16:34

Tgt Ion	Resp	Lower	Upper
142	100		
127	39.3	33.7	50.5
141	0.0	11.3	16.9#

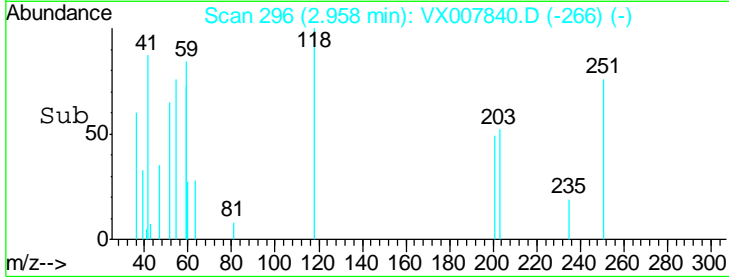
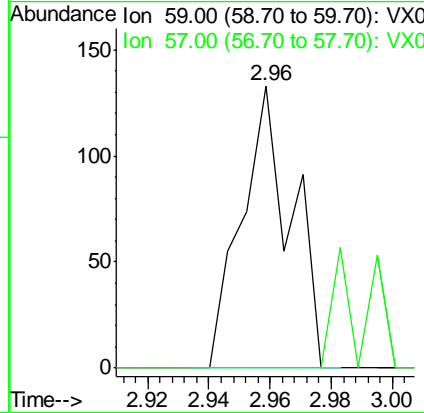
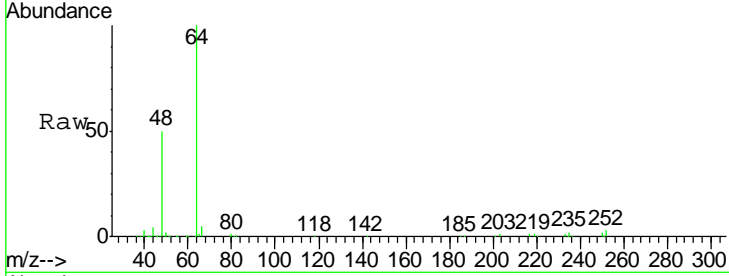




#11
 Tert butyl alcohol
 Concen: 0.621 ug/l
 RT: 2.96 min Scan# 296
 Delta R.T. -0.12 min
 Lab File: VX007840.D
 Acq: 05 Mar 2019 16:34

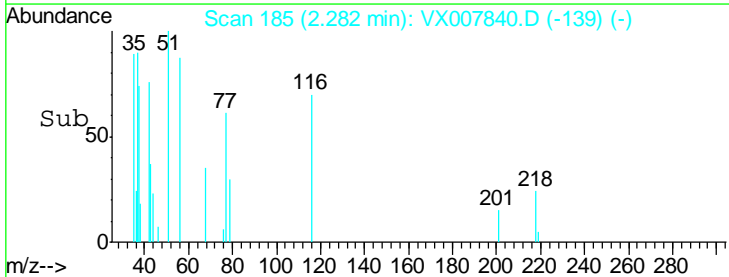
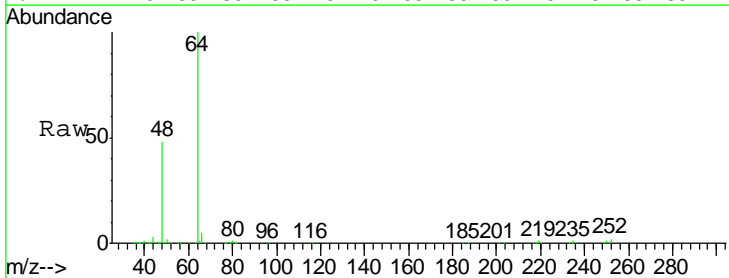
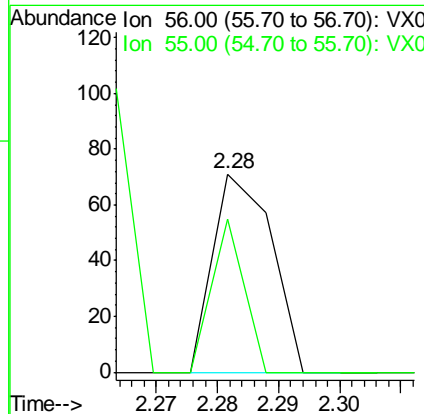
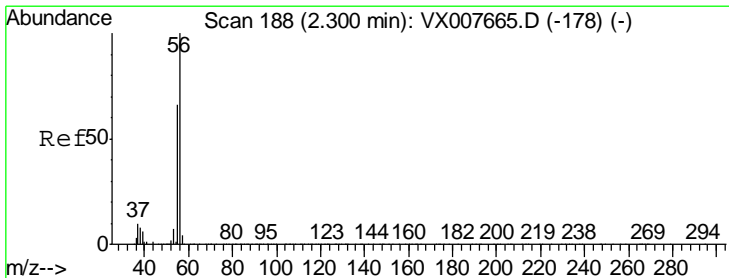
Instrument :
 MSVOA_X
ClientSampled :
 M2-T5-UV(POSTHYPO)

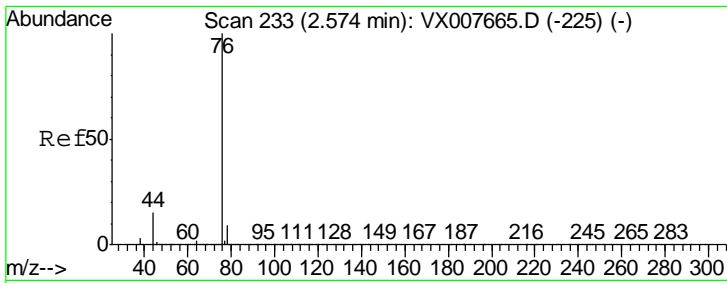
Tgt Ion	Resp	Lower	Upper
59	100		
57	0.0	8.1	12.1#



#13
 Acrolein
 Concen: 0.220 ug/l
 RT: 2.28 min Scan# 185
 Delta R.T. -0.02 min
 Lab File: VX007840.D
 Acq: 05 Mar 2019 16:34

Tgt Ion	Resp	Lower	Upper
56	100		
55	42.6	56.9	85.3#

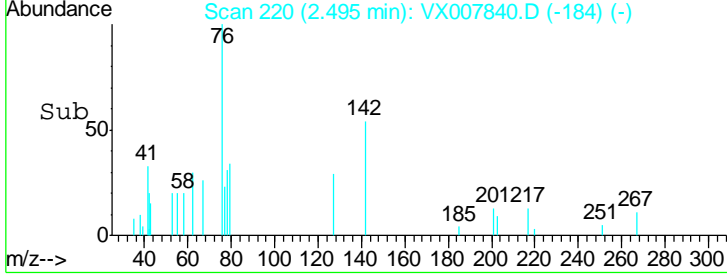
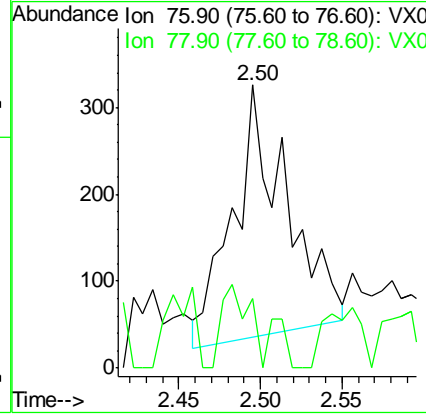
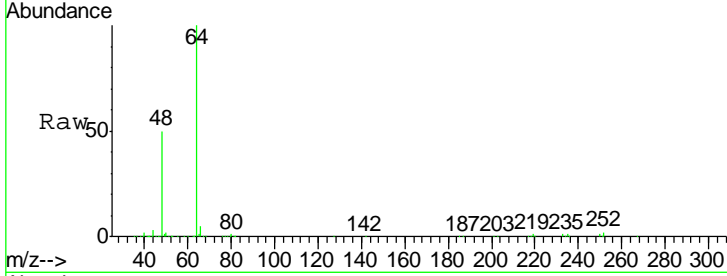




#17
 Carbon Disulfide
 Concen: 0.264 ug/l
 RT: 2.50 min Scan# 220
 Delta R.T. -0.08 min
 Lab File: VX007840.D
 Acq: 05 Mar 2019 16:34

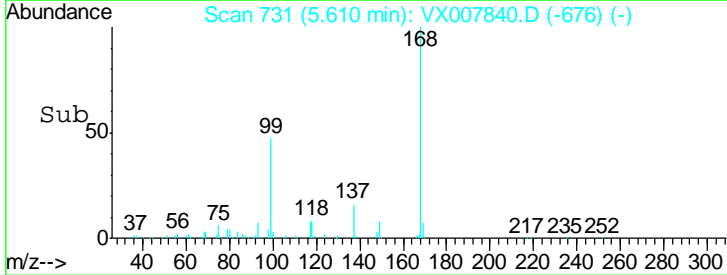
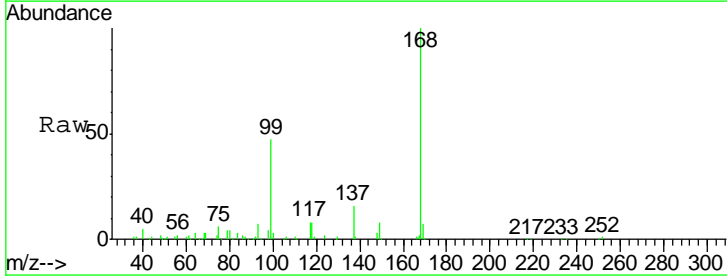
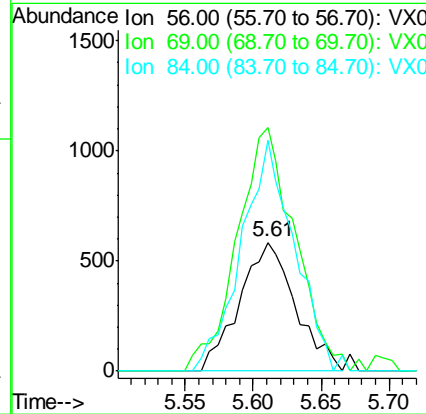
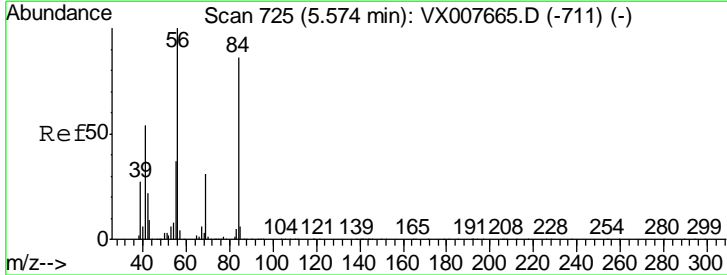
Instrument :
 MSVOA_X
ClientSampled :
 M2-T5-UV(POSTHYPO)

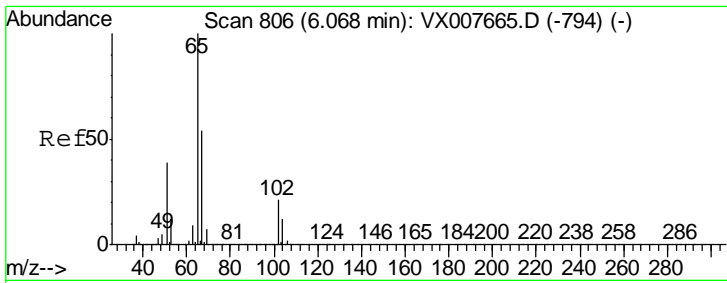
Tgt Ion	Resp	Lower	Upper
76	100		
78	9.2	7.1	10.7



#31
 Cyclohexane
 Concen: 0.955 ug/l
 RT: 5.61 min Scan# 731
 Delta R.T. 0.04 min
 Lab File: VX007840.D
 Acq: 05 Mar 2019 16:34

Tgt Ion	Resp	Lower	Upper
56	100		
69	176.6	23.0	34.6#
84	179.5	69.8	104.6#

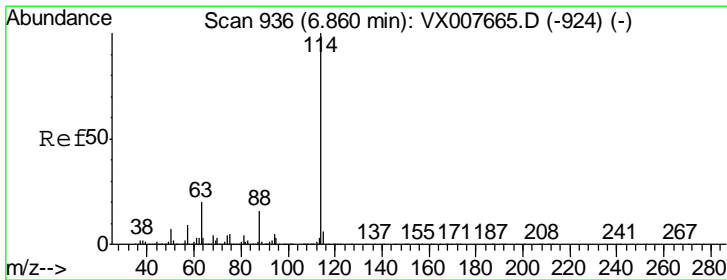
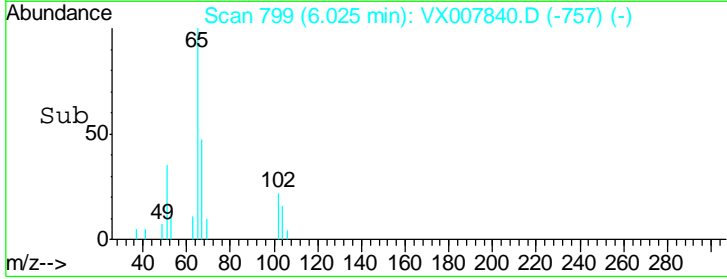
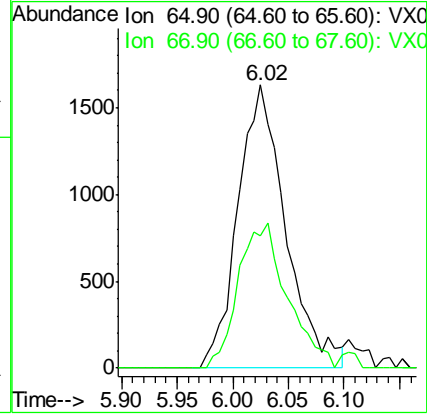
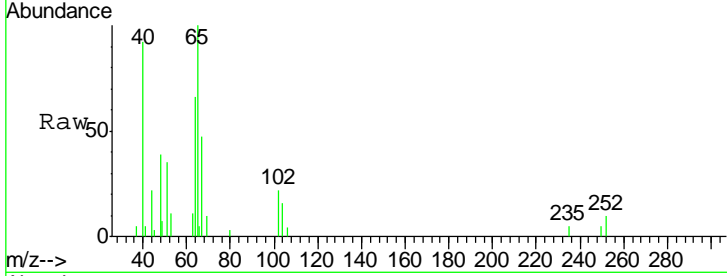




#33
 1,2-Dichloroethane-d4
 Concen: 3.855 ug/l
 RT: 6.02 min Scan# 799
 Delta R.T. -0.04 min
 Lab File: VX007840.D
 Acq: 05 Mar 2019 16:34

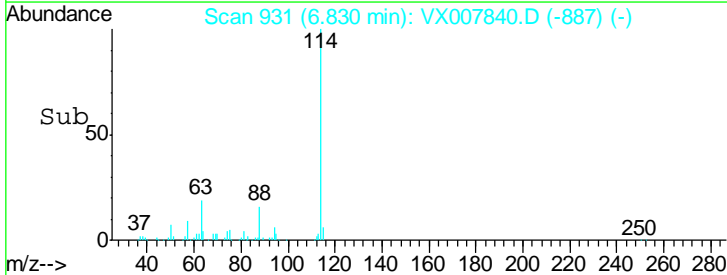
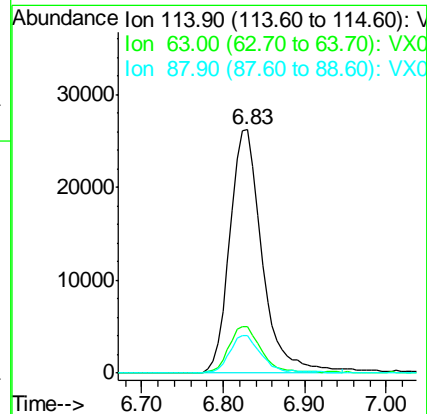
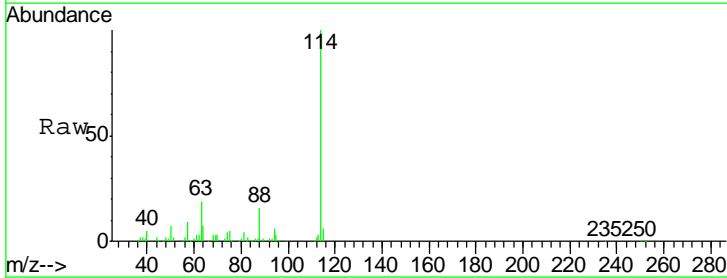
Instrument :
 MSVOA_X
 ClientSampleId :
 M2-T5-UV(POSTHYPO)

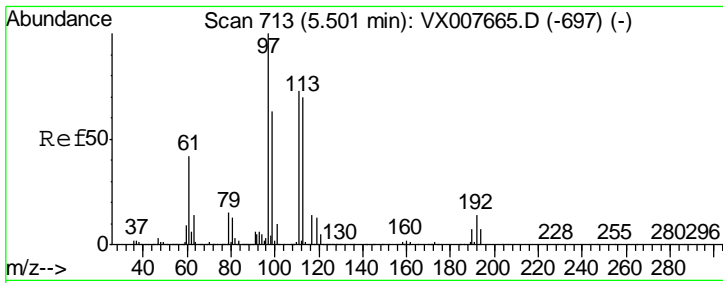
Tgt Ion	Resp	Lower	Upper
65	4876		
65	100		
67	52.2	0.0	108.8



#34
 1,4-Difluorobenzene
 Concen: 50.000 ug/l
 RT: 6.83 min Scan# 931
 Delta R.T. -0.03 min
 Lab File: VX007840.D
 Acq: 05 Mar 2019 16:34

Tgt Ion	Resp	Lower	Upper
114	71842		
114	100		
63	19.3	0.0	35.6
88	15.6	0.0	29.6

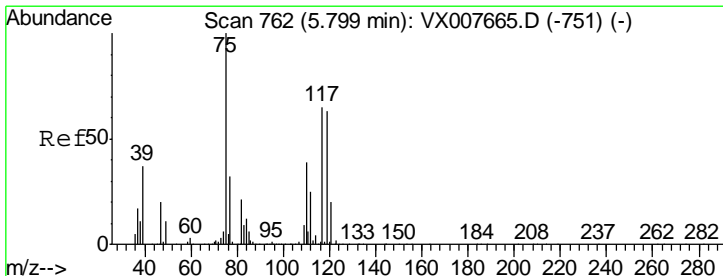
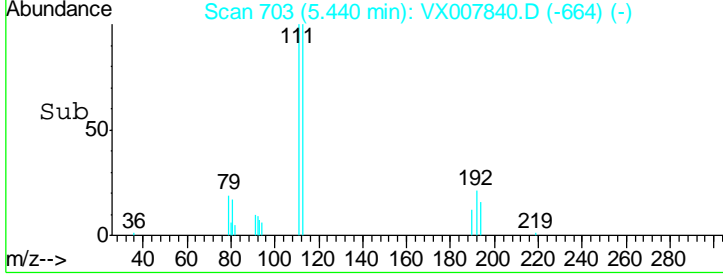
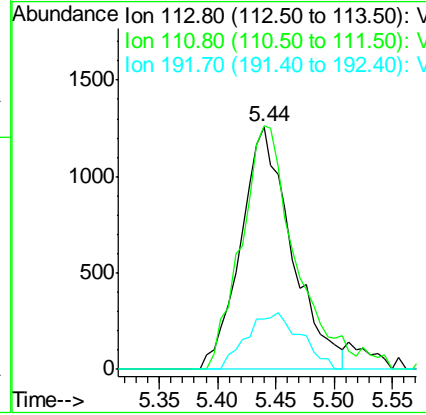
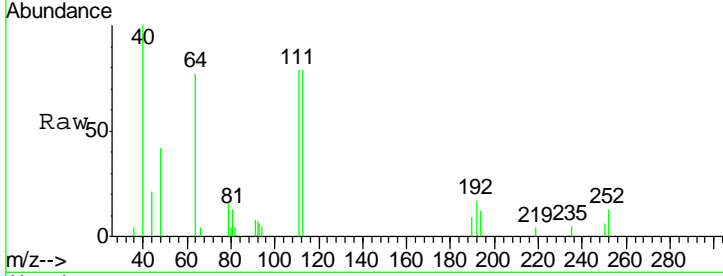




#35
 Dibromofluoromethane
 Concen: 7.981 ug/l
 RT: 5.44 min Scan# 703
 Delta R.T. -0.06 min
 Lab File: VX007840.D
 Acq: 05 Mar 2019 16:34

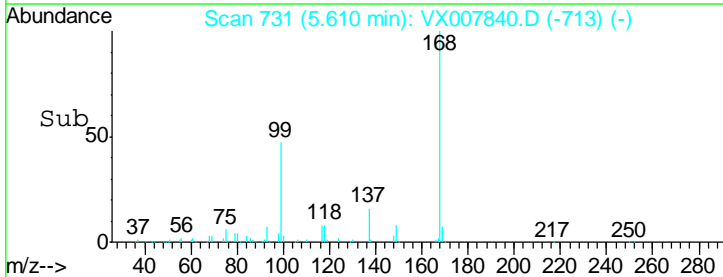
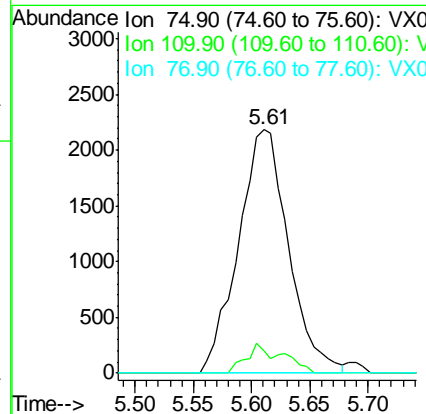
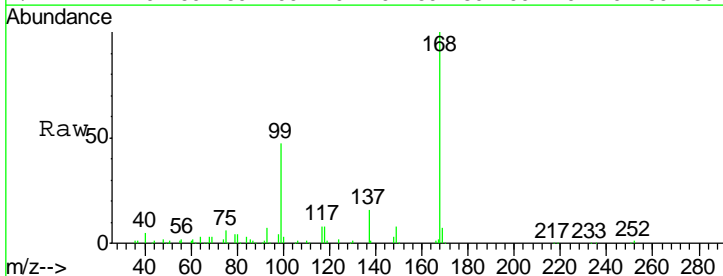
Instrument :
 MSVOA_X
ClientSampled :
 M2-T5-UV(POSTHYPO)

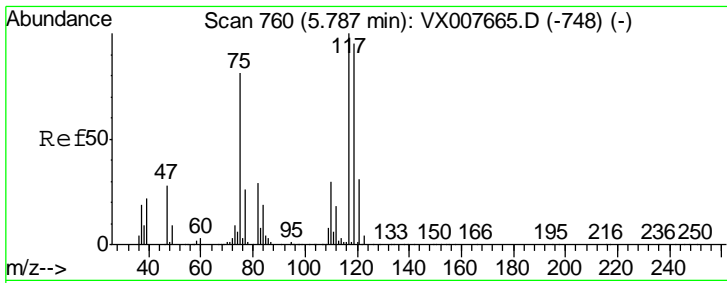
Tgt Ion	Resp	Lower	Upper
113	3833		
113	100		
111	105.6	81.8	122.8
192	24.5	18.5	27.7



#36
 1,1-Dichloropropene
 Concen: 10.106 ug/l
 RT: 5.61 min Scan# 731
 Delta R.T. -0.19 min
 Lab File: VX007840.D
 Acq: 05 Mar 2019 16:34

Tgt Ion	Resp	Lower	Upper
75	6527		
75	100		
110	5.2	20.0	59.9#
77	0.0	24.7	37.1#

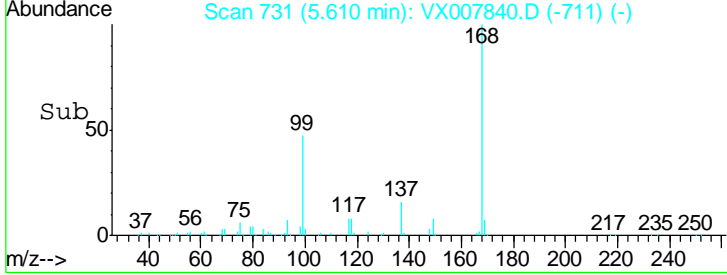
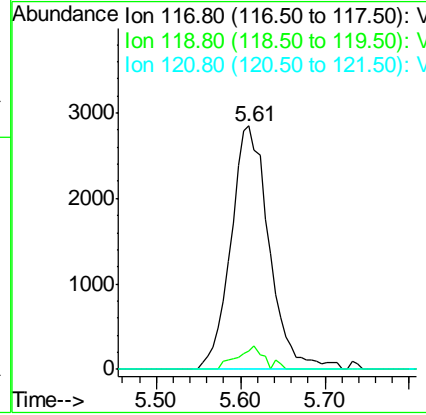
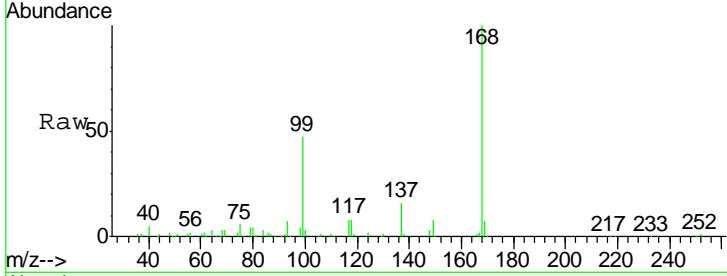




#38
 Carbon Tetrachloride
 Concen: 13.519 ug/l
 RT: 5.61 min Scan# 731
 Delta R.T. -0.18 min
 Lab File: VX007840.D
 Acq: 05 Mar 2019 16:34

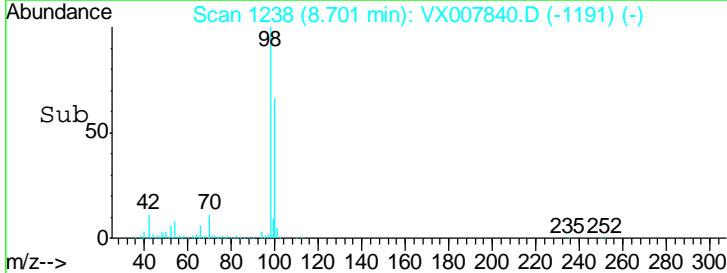
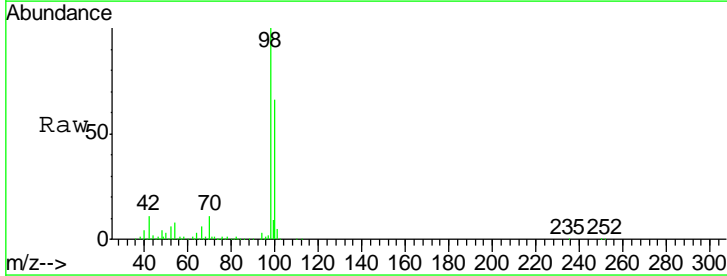
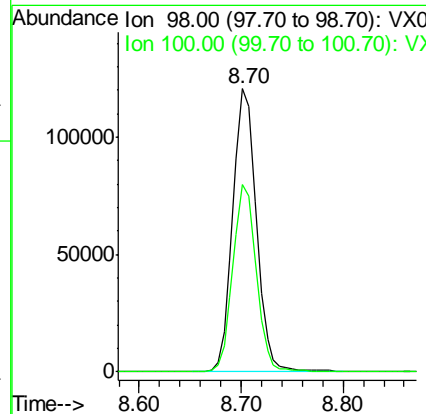
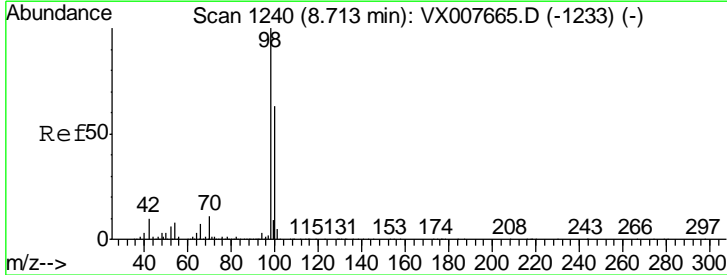
Instrument :
 MSVOA_X
ClientSampled :
 M2-T5-UV(POSTHYPO)

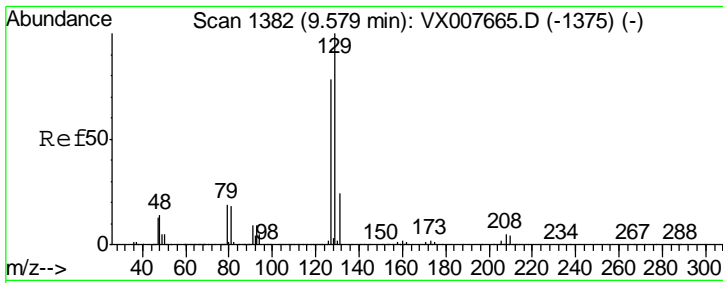
Tgt Ion	Resp	Lower	Upper
117	100		
119	7.5	75.3	112.9#
121	0.0	25.0	37.4#



#50
 Toluene-d8
 Concen: 105.438 ug/l
 RT: 8.70 min Scan# 1238
 Delta R.T. -0.01 min
 Lab File: VX007840.D
 Acq: 05 Mar 2019 16:34

Tgt Ion	Resp	Lower	Upper
98	100		
100	65.7	51.6	77.4

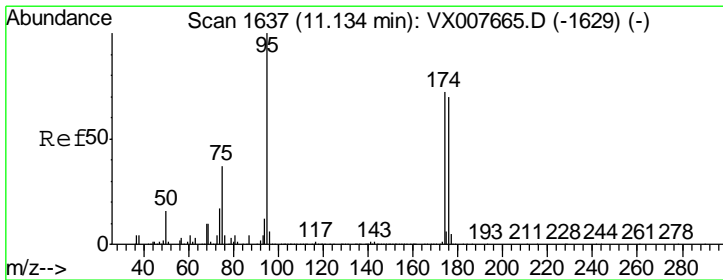
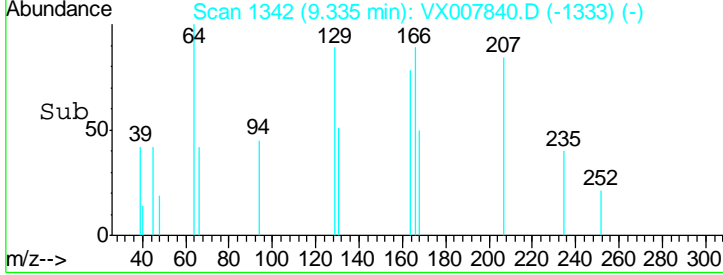
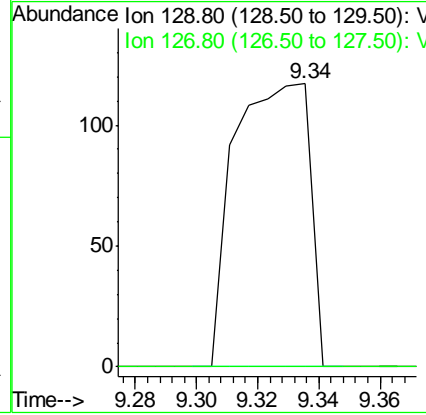
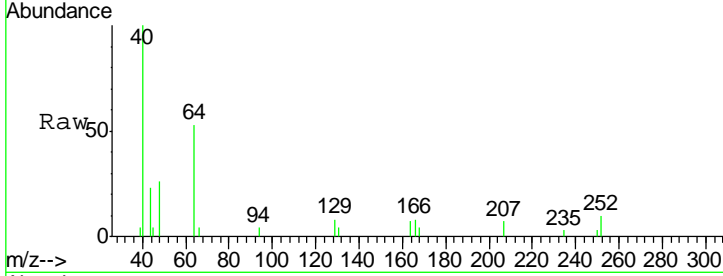




#60
 Dibromochloromethane
 Concen: 0.394 ug/l
 RT: 9.34 min Scan# 1342
 Delta R.T. -0.24 min
 Lab File: VX007840.D
 Acq: 05 Mar 2019 16:34

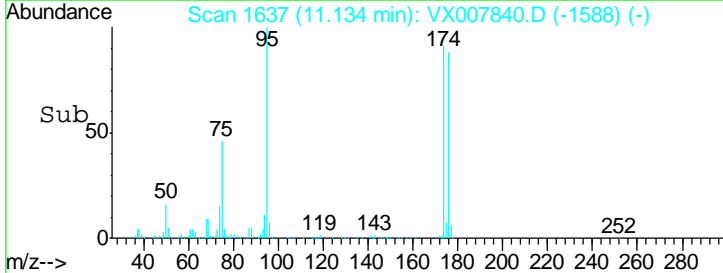
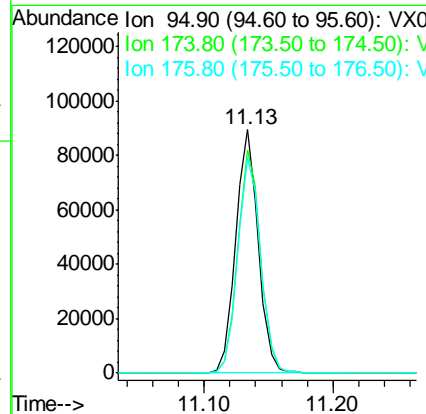
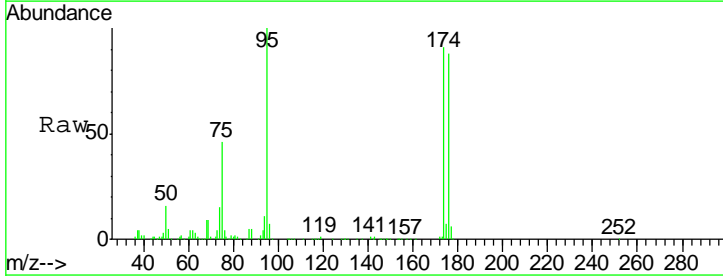
Instrument : MSVOA_X
 ClientSampled : M2-T5-UV(POSTHYPO)

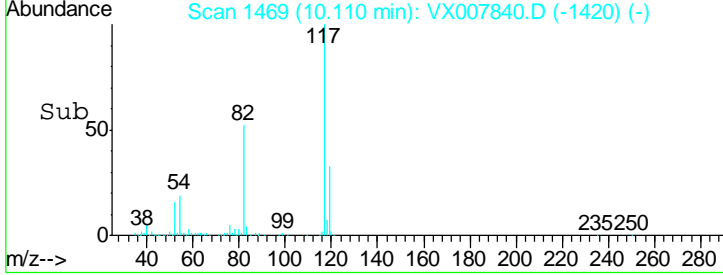
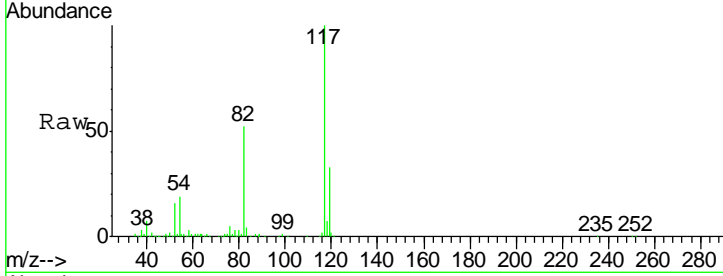
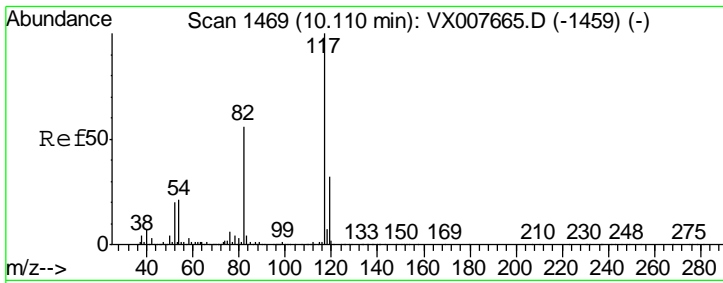
Tgt Ion: 129 Resp: 199
 Ion Ratio Lower Upper
 129 100
 127 0.0 37.8 113.4#



#62
 4-Bromofluorobenzene
 Concen: 162.112 ug/l
 RT: 11.13 min Scan# 1637
 Delta R.T. 0.00 min
 Lab File: VX007840.D
 Acq: 05 Mar 2019 16:34

Tgt Ion: 95 Resp: 109395
 Ion Ratio Lower Upper
 95 100
 174 92.8 0.0 189.2
 176 90.4 0.0 186.2

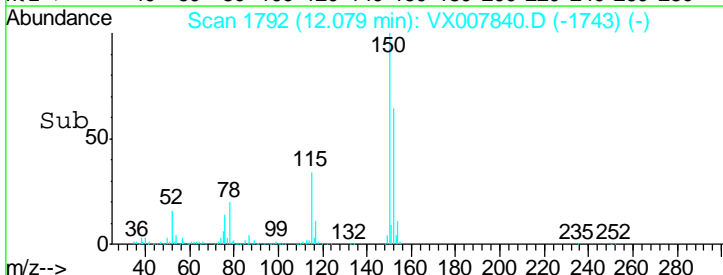
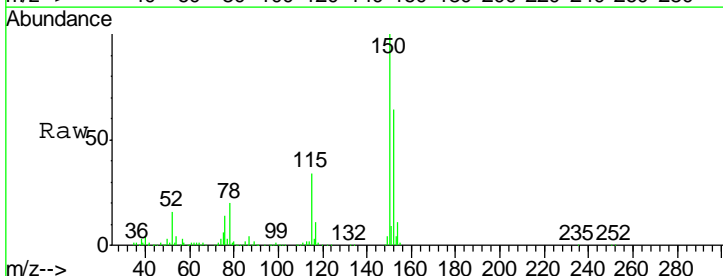
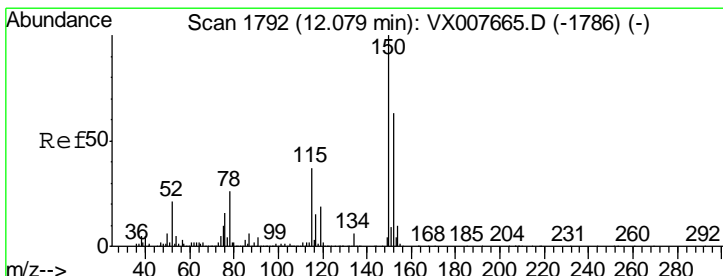
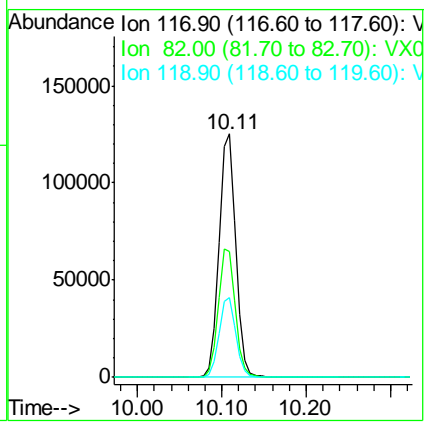




#63
 Chlorobenzene-d5
 Concen: 50.000 ug/l
 RT: 10.11 min Scan# 1469
 Delta R.T. 0.00 min
 Lab File: VX007840.D
 Acq: 05 Mar 2019 16:34

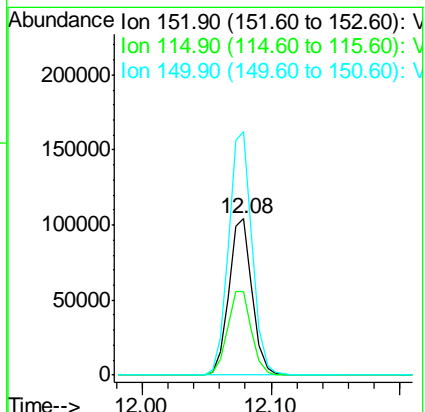
Instrument : MSVOA_X
 ClientSampled : M2-T5-UV(POSTHYPO)

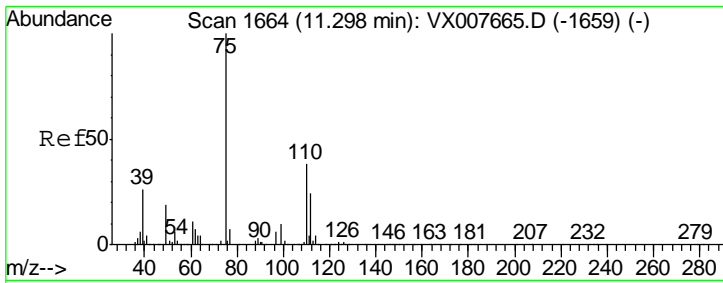
Tgt Ion	Resp	Lower	Upper
117	173388		
82	51.6	42.1	63.1
119	32.7	26.5	39.7



#72
 1,4-Dichlorobenzene-d4
 Concen: 50.000 ug/l
 RT: 12.08 min Scan# 1792
 Delta R.T. 0.00 min
 Lab File: VX007840.D
 Acq: 05 Mar 2019 16:34

Tgt Ion	Resp	Lower	Upper
152	132114		
115	55.1	38.0	114.0
150	156.9	0.0	346.4

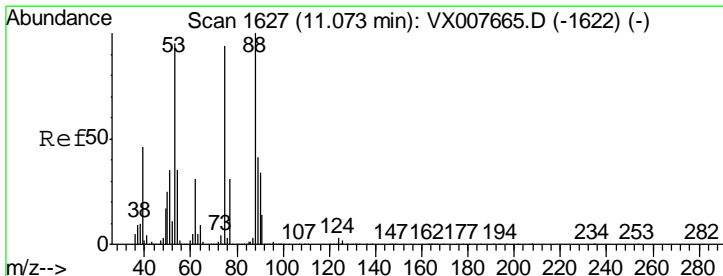
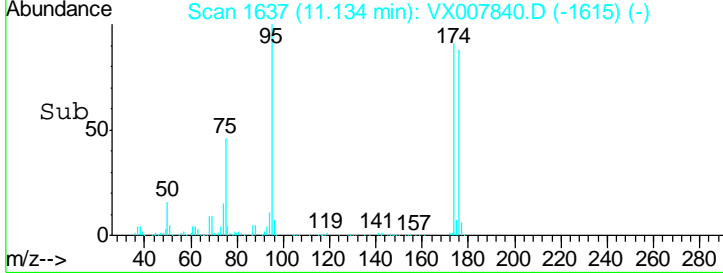
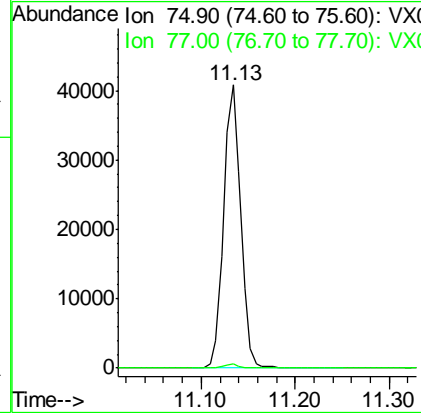
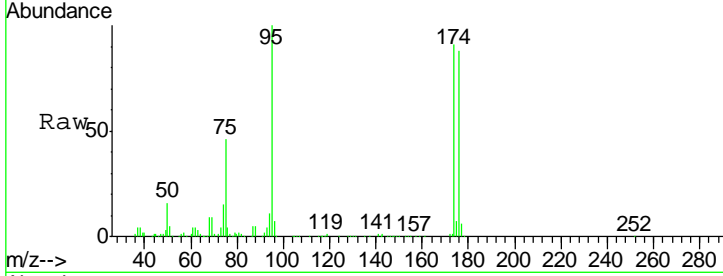




#76
 1,2,3-Trichloropropane
 Concen: 18.239 ug/l
 RT: 11.13 min Scan# 1637
 Delta R.T. -0.16 min
 Lab File: VX007840.D
 Acq: 05 Mar 2019 16:34

Instrument :
 MSVOA_X
ClientSampled :
 M2-T5-UV(POSTHYPO)

Tgt Ion: 75 Resp: 51363
 Ion Ratio Lower Upper
 75 100
 77 1.3 23.0 69.0#



#81
 trans-1,4-Dichloro-2-butene
 Concen: 48.944 ug/l
 RT: 11.13 min Scan# 1637
 Delta R.T. 0.06 min
 Lab File: VX007840.D
 Acq: 05 Mar 2019 16:34

Tgt Ion: 75 Resp: 51363
 Ion Ratio Lower Upper
 75 100
 53 0.0 81.0 121.6#
 89 0.0 41.4 62.0#

