

Data Path : Z:\voasrv\HPCHEM1\MSVOA_X\Data\VX030524\
 Data File : VX040591.D
 Acq On : 05 Mar 2024 16:24
 Operator : JC/MD
 Sample : VSTDCCC020
 Misc : 5.0mL/MSVOA_X/WATER
 ALS Vial : 15 Sample Multiplier: 1

Instrument :
 MSVOA_X
 ClientSampleId :
 VSTDCCC020EC

Quant Time: Mar 06 00:14:47 2024
 Quant Method : Z:\voasrv\HPCHEM1\MSVOA_X\Method\624X030524W.M
 Quant Title : METHOD 624 VOLATILE ORGANIC ANALYSIS
 QLast Update : Tue Mar 05 13:21:29 2024
 Response via : Initial Calibration

Compound	R.T.	QIon	Response	Conc	Units	Dev(Min)
Internal Standards						
1) Bromochloromethane	4.897	128	15445	30.000	ug/l	0.00
28) 1,4-Difluorobenzene	6.757	114	84032	30.000	ug/l	0.00
57) Chlorobenzene-d5	10.055	117	82687	30.000	ug/l	0.00
System Monitoring Compounds						
27) 1,2-Dichloroethane-d4	5.946	65	44549	28.880	ug/l	0.00
Spiked Amount	30.000	Range	91 - 110	Recovery	=	96.267%
60) 4-Bromofluorobenzene	11.079	95	40306	28.418	ug/l	0.00
Spiked Amount	30.000	Range	63 - 112	Recovery	=	94.733%
63) Toluene-d8	8.647	98	109637	30.003	ug/l	0.00
Spiked Amount	30.000	Range	91 - 112	Recovery	=	100.000%
Target Compounds						
						Qvalue
2) Dichlorodifluoromethane	1.166	85	22307	21.295	ug/l	99
3) Chloromethane	1.294	50	21836	20.344	ug/l	98
4) Vinyl Chloride	1.374	62	23764	20.487	ug/l	99
5) Bromomethane	1.605	94	16756	23.652	ug/l	97
6) Chloroethane	1.685	64	13641	20.016	ug/l	97
7) Trichlorofluoromethane	1.886	101	35137	19.895	ug/l	94
8) Diethyl Ether	2.130	74	11856	19.772	ug/l	100
9) 1,1,2-Trichlorotrifluo...	2.331	101	20090	20.767	ug/l	93
10) 1,1-Dichloroethene	2.319	96	18427	20.007	ug/l	97
11) Methyl Iodide	2.453	142	21401	19.212	ug/l	97
12) Methyl Acetate	2.703	43	29840	19.668	ug/l	98
13) Acrolein	2.233	56	25942	90.700	ug/l	98
14) Acrylonitrile	3.056	53	59779	100.063	ug/l	99
15) Acetone	2.374	58	16531	96.805	ug/l	69
16) Carbon Disulfide	2.508	76	50165	19.818	ug/l	97
17) Allyl chloride	2.660	41	33909	19.950	ug/l	84
18) Methylene Chloride	2.788	84	21575	20.517	ug/l	93
19) trans-1,2-Dichloroethene	3.093	96	20146	20.035	ug/l	97
20) Diisopropyl ether	3.757	45	66461	19.552	ug/l	98
21) 1,1-Dichloroethane	3.605	63	39260	20.071	ug/l	97
22) cis-1,2-Dichloroethene	4.483	96	23391	20.031	ug/l	94
23) tert-Butyl Alcohol	2.953	59	26617	94.298	ug/l	# 100
24) Methyl tert-Butyl Ether	3.111	73	68455	20.139	ug/l	94
25) Chloroform	5.086	83	43215	20.185	ug/l	96
26) Cyclohexane	5.464	56	32359	20.498	ug/l	# 98
29) 1,1-Dichloropropene	5.684	75	31297	21.517	ug/l	97
30) 2-Butanone	4.550	43	91211	102.763	ug/l	99
31) 2,2-Dichloropropane	4.477	77	33713	21.475	ug/l	97
32) 1,1,1-Trichloroethane	5.379	97	38668	21.098	ug/l	97
33) Carbon Tetrachloride	5.678	117	31795	20.619	ug/l	98
34) Benzene	6.031	78	82475	21.004	ug/l	96
35) Methacrylonitrile	4.922	41	18483	20.284	ug/l	94
36) 1,2-Dichloroethane	6.080	62	38519	21.217	ug/l	96
37) Trichloroethene	7.123	130	22720	21.532	ug/l	97
38) Methylcyclohexane	7.379	83	34966	22.325	ug/l	99
39) 1,2-Dichloropropane	7.428	63	21943	21.948	ug/l	100
40) Dibromomethane	7.580	93	16811	21.404	ug/l	97
41) Bromodichloromethane	7.818	83	31680	20.275	ug/l	97
42) Vinyl Acetate	3.715	43	317027	103.740	ug/l	100

Data Path : Z:\voasrv\HPCHEM1\MSVOA_X\Data\VX030524\
 Data File : VX040591.D
 Acq On : 05 Mar 2024 16:24
 Operator : JC/MD
 Sample : VSTDCCC020
 Misc : 5.0mL/MSVOA_X/WATER
 ALS Vial : 15 Sample Multiplier: 1

Instrument :
 MSVOA_X
 ClientSampleId :
 VSTDCCC020EC

Quant Time: Mar 06 00:14:47 2024
 Quant Method : Z:\voasrv\HPCHEM1\MSVOA_X\Method\624X030524W.M
 Quant Title : METHOD 624 VOLATILE ORGANIC ANALYSIS
 QLast Update : Tue Mar 05 13:21:29 2024
 Response via : Initial Calibration

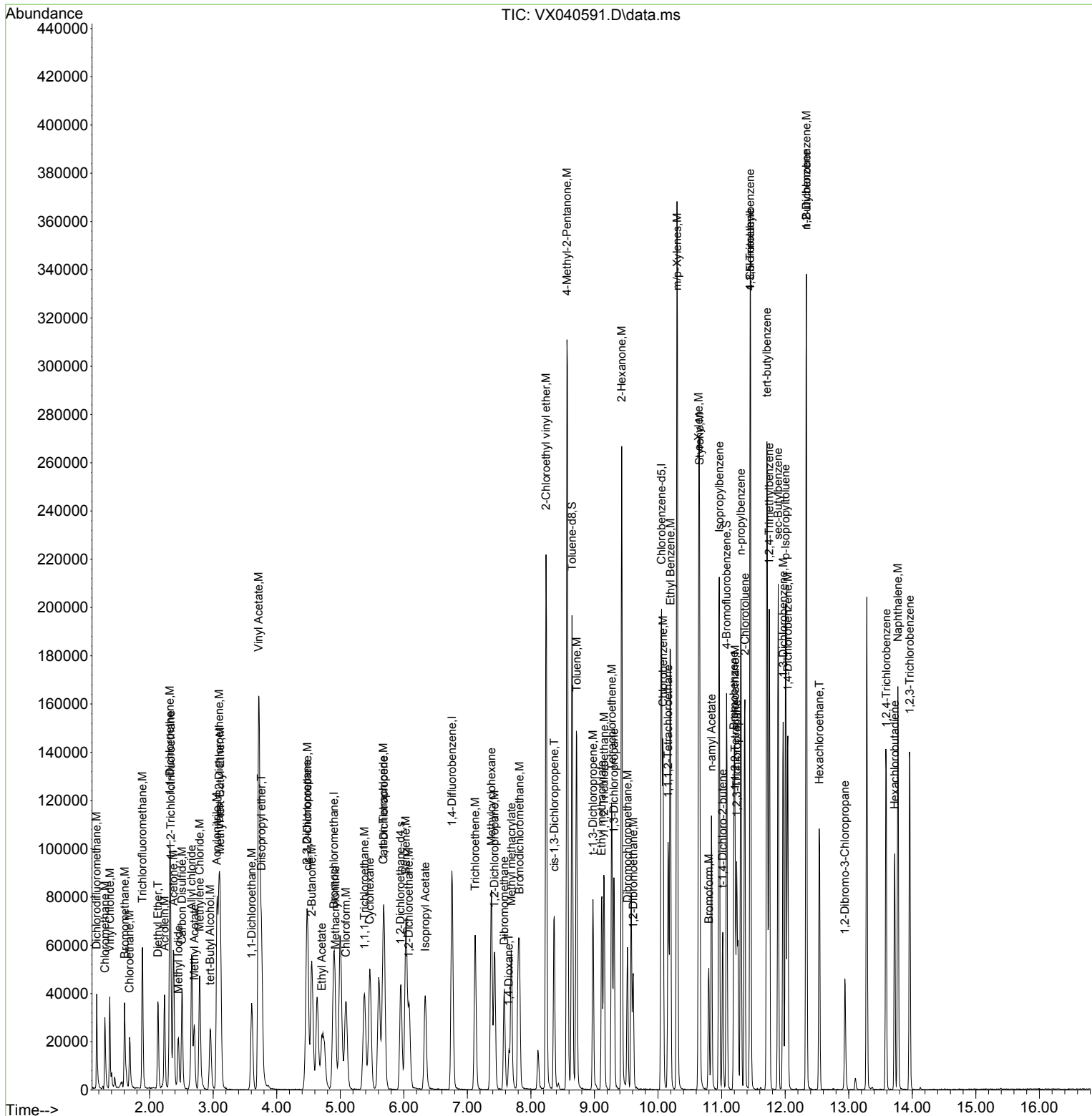
Compound	R.T.	QIon	Response	Conc	Units	Dev(Min)
43) Ethyl Acetate	4.708	43	35290	21.111	ug/l	99
44) Isopropyl Acetate	6.336	43	55236	20.701	ug/l #	76
45) 1,4-Dioxane	7.653	88	11489	418.876	ug/l	96
46) Methyl methacrylate	7.690	41	27954	21.093	ug/l	94
47) n-amyl Acetate	10.842	43	46451	20.199	ug/l	97
48) t-1,3-Dichloropropene	8.976	75	33970	20.570	ug/l	96
49) cis-1,3-Dichloropropene	8.366	75	36251	21.548	ug/l	92
50) 1,1,2-Trichloroethane	9.153	97	22182	21.262	ug/l	99
51) Ethyl methacrylate	9.110	69	34462	20.982	ug/l	97
52) 1,3-Dichloropropane	9.305	76	38404	21.573	ug/l	99
53) Dibromochloromethane	9.519	129	23248	19.548	ug/l	100
54) 1,2-Dibromoethane	9.610	107	24234	20.993	ug/l	99
55) 2-Chloroethyl vinyl ether	8.238	63	84503	101.030	ug/l	99
56) Bromoform	10.799	173	17048	20.210	ug/l #	95
58) 4-Methyl-2-Pentanone	8.568	43	184800	100.368	ug/l	99
59) 2-Hexanone	9.427	43	139633	93.888	ug/l	96
61) Tetrachloroethene	9.275	164	21010	21.408	ug/l	88
62) Toluene	8.720	91	92923	20.404	ug/l	100
64) Chlorobenzene	10.079	112	57861	20.788	ug/l	98
65) 1,1,1,2-Tetrachloroethane	10.159	131	20920	19.705	ug/l	98
66) Ethyl Benzene	10.195	91	107736	20.518	ug/l	99
67) m/p-Xylenes	10.299	106	79122	40.805	ug/l	94
68) o-Xylene	10.640	106	38612	20.686	ug/l	97
69) Styrene	10.653	104	63488	20.244	ug/l	96
70) Isopropylbenzene	10.963	105	106640	21.143	ug/l	98
71) 1,1,2,2-Tetrachloroethane	11.213	83	33060	18.697	ug/l	100
72) 1,2,3-Trichloropropane	11.238	75	37158	23.356	ug/l	90
73) Bromobenzene	11.195	156	23430	19.623	ug/l	90
74) n-propylbenzene	11.305	91	122178	19.613	ug/l	100
75) 2-Chlorotoluene	11.366	91	70604	19.099	ug/l	100
76) 1,3,5-Trimethylbenzene	11.451	105	83503	18.805	ug/l	100
77) t-1,4-Dichloro-2-butene	11.018	75	9400	19.012	ug/l	80
78) 4-Chlorotoluene	11.451	91	81360	18.450	ug/l	99
79) tert-butylbenzene	11.713	119	79134	19.094	ug/l	96
80) 1,2,4-Trimethylbenzene	11.750	105	85544	19.553	ug/l	97
81) sec-Butylbenzene	11.890	105	104084	19.021	ug/l	98
82) p-Isopropyltoluene	12.006	119	85154	19.012	ug/l	99
83) 1,3-Dichlorobenzene	11.969	146	44072	18.969	ug/l	99
84) 1,4-Dichlorobenzene	12.043	146	44949	18.919	ug/l	98
85) n-Butylbenzene	12.335	91	80686	18.513	ug/l	99
86) Hexachloroethane	12.536	117	15184	19.429	ug/l	95
87) 1,2-Dichlorobenzene	12.335	146	42344	18.755	ug/l	99
88) 1,2-Dibromo-3-Chloropr...	12.939	75	9225	19.512	ug/l	98
89) 1,2,4-Trichlorobenzene	13.591	180	30534	20.086	ug/l	98
90) Hexachlorobutadiene	13.725	225	12600	20.499	ug/l	98
91) Naphthalene	13.774	128	97568	19.676	ug/l	100
92) 1,2,3-Trichlorobenzene	13.963	180	31220	20.828	ug/l	96

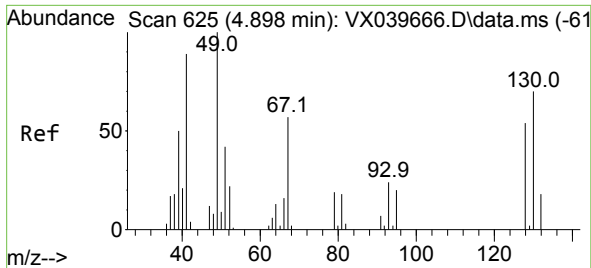
(#) = qualifier out of range (m) = manual integration (+) = signals summed

Data Path : Z:\voasrv\HPCHEM1\MSVOA_X\Data\VX030524\
 Data File : VX040591.D
 Acq On : 05 Mar 2024 16:24
 Operator : JC/MD
 Sample : VSTDCCC020
 Misc : 5.0mL/MSVOA_X/WATER
 ALS Vial : 15 Sample Multiplier: 1

Instrument :
 MSVOA_X
 ClientSampleId :
 VSTDCCC020EC

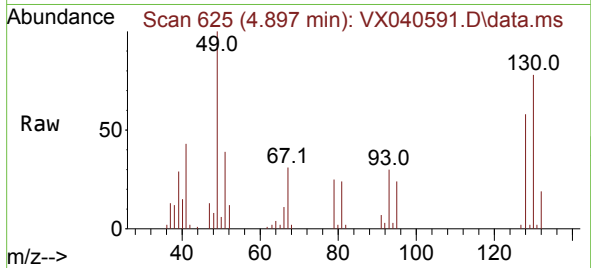
Quant Time: Mar 06 00:14:47 2024
 Quant Method : Z:\voasrv\HPCHEM1\MSVOA_X\Method\624X030524W.M
 Quant Title : METHOD 624 VOLATILE ORGANIC ANALYSIS
 QLast Update : Tue Mar 05 13:21:29 2024
 Response via : Initial Calibration





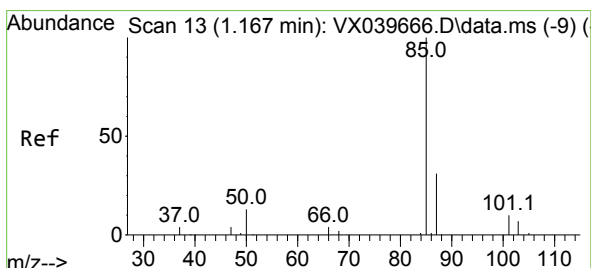
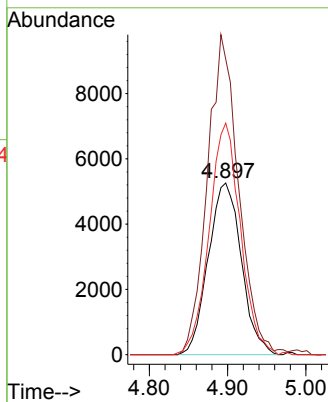
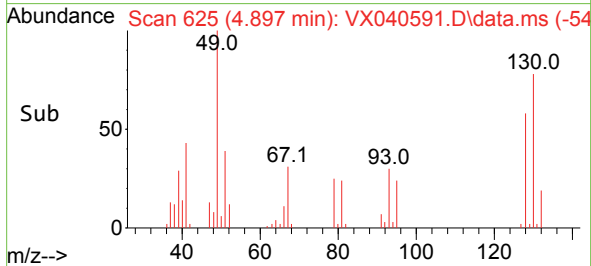
#1
 Bromochloromethane
 Concen: 30.000 ug/l
 RT: 4.897 min Scan# 61
 Delta R.T. -0.001 min
 Lab File: VX040591.D
 Acq: 05 Mar 2024 16:24

Instrument :
 MSVOA_X
 ClientSampleId :
 VSTDCCC020EC



Tgt Ion:128 Resp: 15445

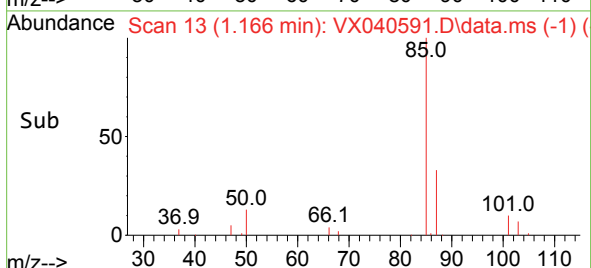
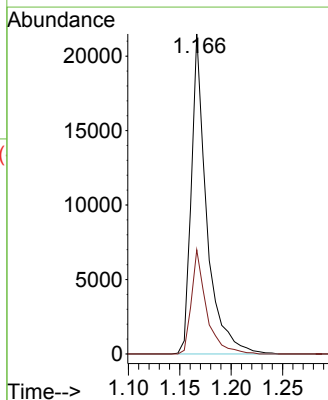
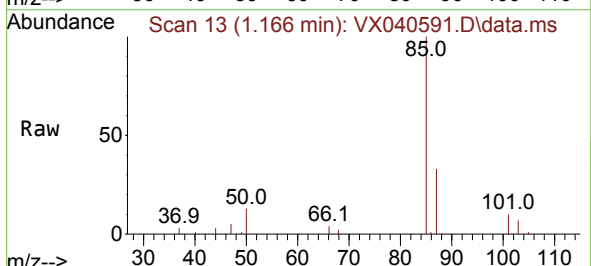
Ion	Ratio	Lower	Upper
128	100		
49	175.2	0.0	444.0
130	127.5	0.0	297.8

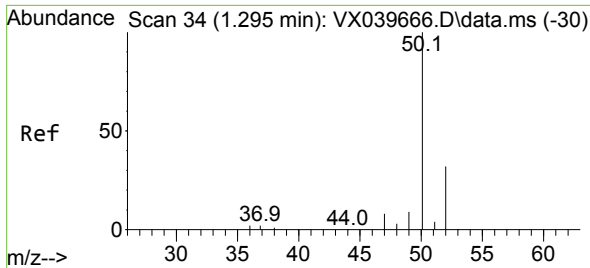


#2
 Dichlorodifluoromethane
 Concen: 21.295 ug/l
 RT: 1.166 min Scan# 13
 Delta R.T. -0.001 min
 Lab File: VX040591.D
 Acq: 05 Mar 2024 16:24

Tgt Ion: 85 Resp: 22307

Ion	Ratio	Lower	Upper
85	100		
87	32.6	16.7	50.1

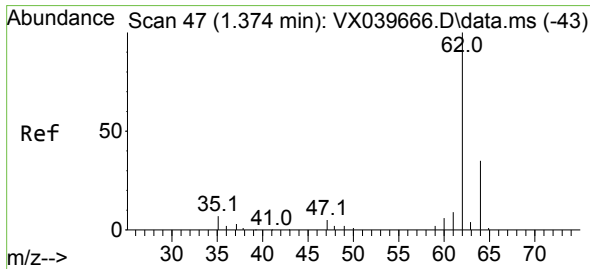
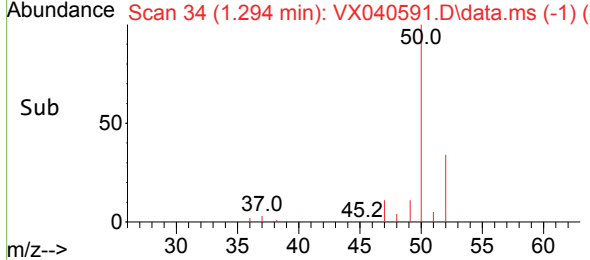
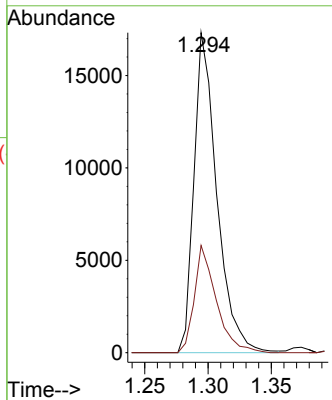
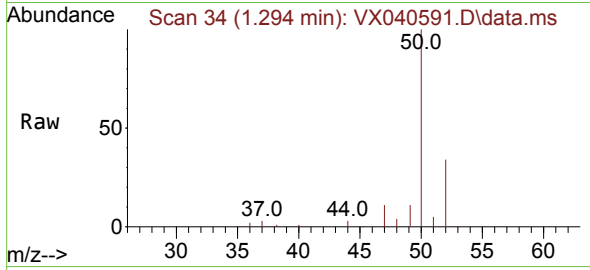




#3
 Chloromethane
 Concen: 20.344 ug/l
 RT: 1.294 min Scan# 34
 Delta R.T. -0.001 min
 Lab File: VX040591.D
 Acq: 05 Mar 2024 16:24

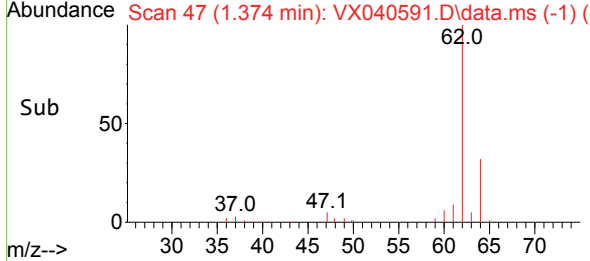
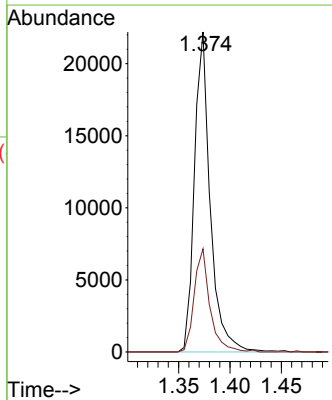
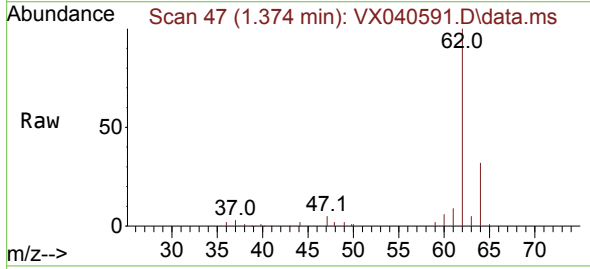
Instrument : MSVOA_X
 ClientSampleId : VSTDCCC020EC

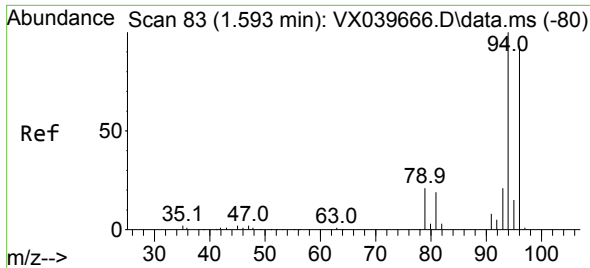
Tgt Ion: 50 Resp: 21836
 Ion Ratio Lower Upper
 50 100
 52 33.5 27.8 41.8



#4
 Vinyl Chloride
 Concen: 20.487 ug/l
 RT: 1.374 min Scan# 47
 Delta R.T. -0.000 min
 Lab File: VX040591.D
 Acq: 05 Mar 2024 16:24

Tgt Ion: 62 Resp: 23764
 Ion Ratio Lower Upper
 62 100
 64 32.3 26.3 39.5

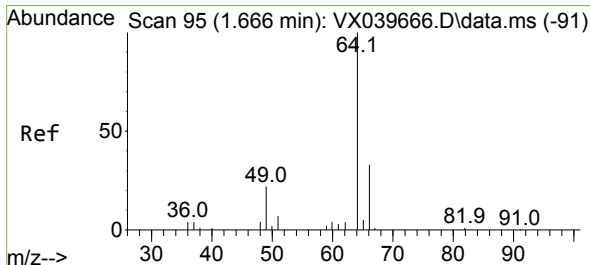
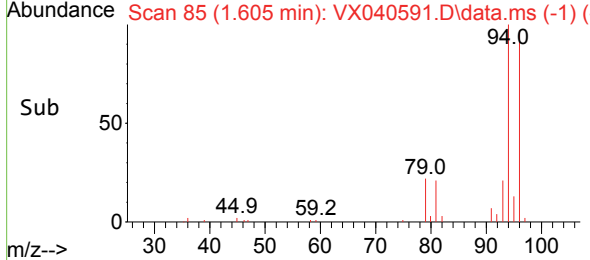
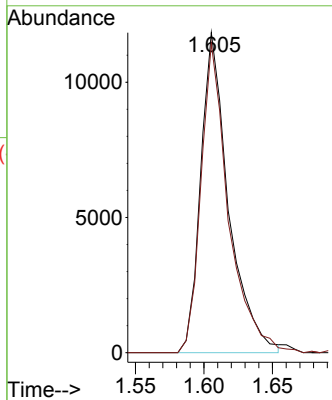
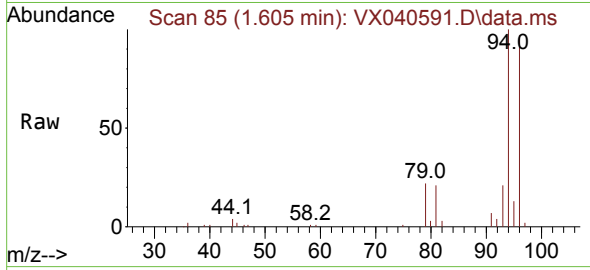




#5
 Bromomethane
 Concen: 23.652 ug/l
 RT: 1.605 min Scan# 81
 Delta R.T. 0.012 min
 Lab File: VX040591.D
 Acq: 05 Mar 2024 16:24

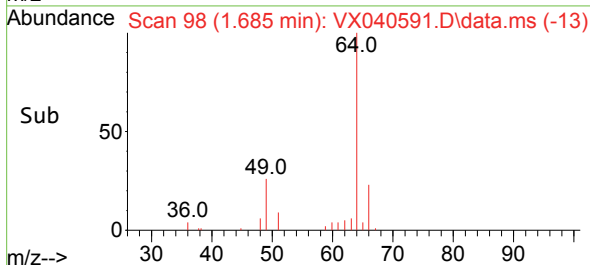
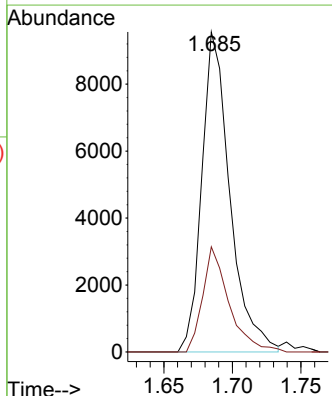
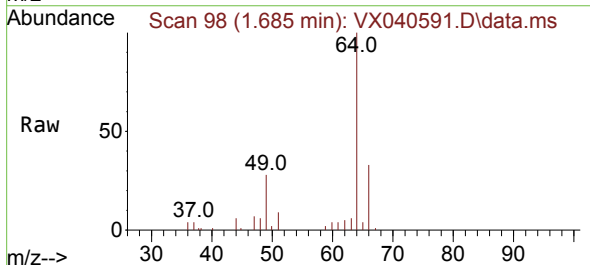
Instrument : MSVOA_X
 ClientSampleId : VSTDCCC020EC

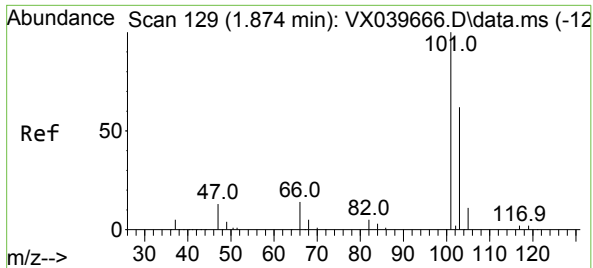
Tgt Ion: 94 Resp: 16756
 Ion Ratio Lower Upper
 94 100
 96 96.6 74.9 112.3



#6
 Chloroethane
 Concen: 20.016 ug/l
 RT: 1.685 min Scan# 98
 Delta R.T. 0.019 min
 Lab File: VX040591.D
 Acq: 05 Mar 2024 16:24

Tgt Ion: 64 Resp: 13641
 Ion Ratio Lower Upper
 64 100
 66 32.9 25.0 37.6

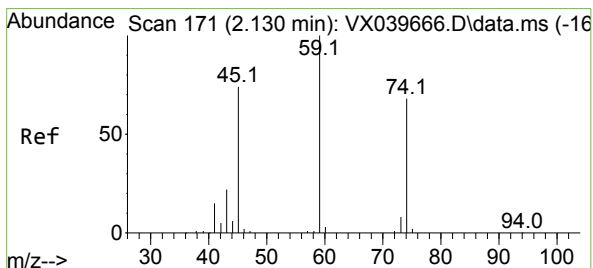
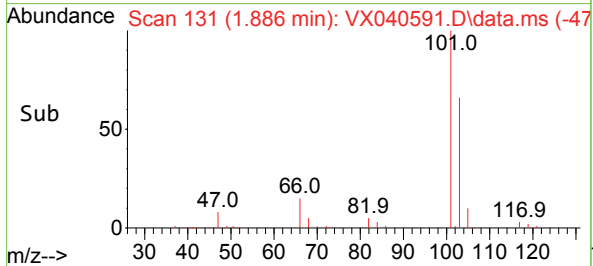
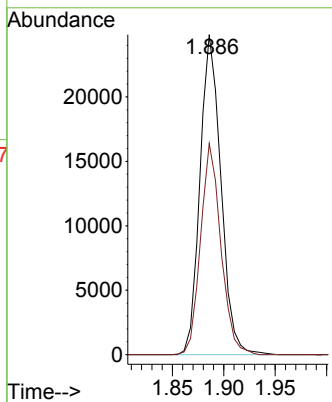
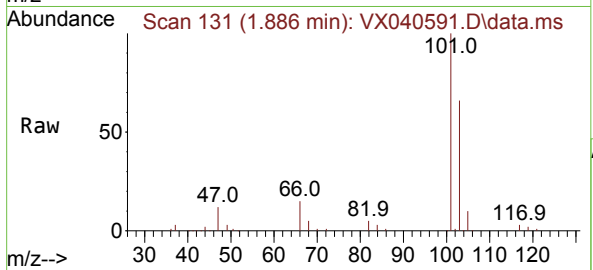




#7
 Trichlorofluoromethane
 Concen: 19.895 ug/l
 RT: 1.886 min Scan# 11
 Delta R.T. 0.012 min
 Lab File: VX040591.D
 Acq: 05 Mar 2024 16:24

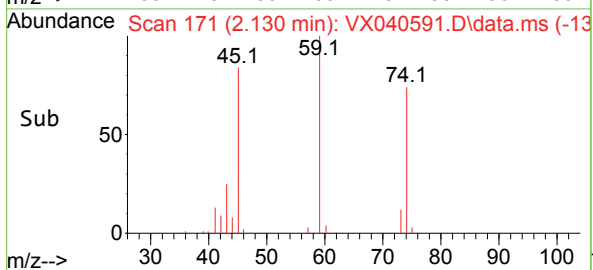
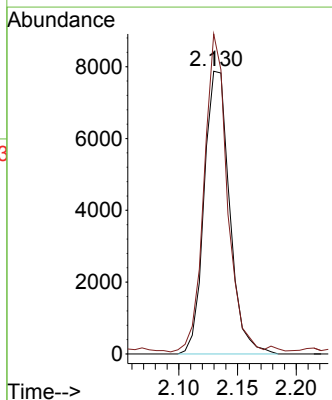
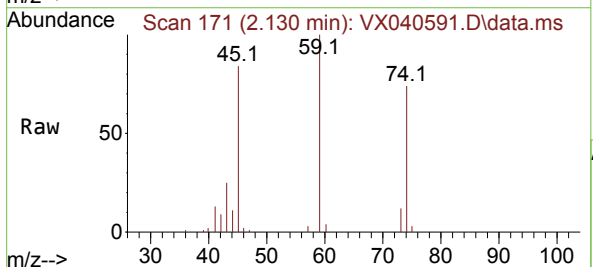
Instrument : MSVOA_X
 ClientSampleId : VSTDCCC020EC

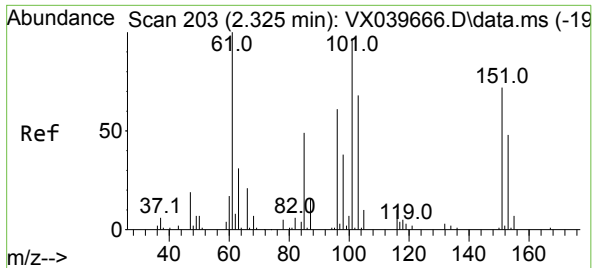
Tgt Ion:101 Resp: 35137
 Ion Ratio Lower Upper
 101 100
 103 66.0 49.1 73.7



#8
 Diethyl Ether
 Concen: 19.772 ug/l
 RT: 2.130 min Scan# 171
 Delta R.T. -0.000 min
 Lab File: VX040591.D
 Acq: 05 Mar 2024 16:24

Tgt Ion: 74 Resp: 11856
 Ion Ratio Lower Upper
 74 100
 45 103.0 20.5 184.5

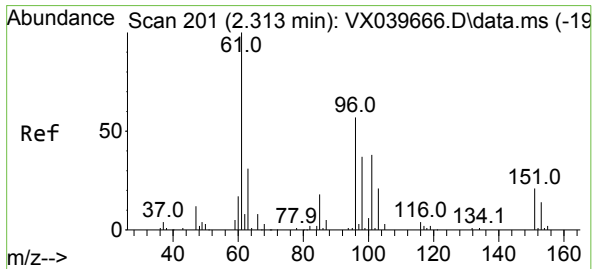
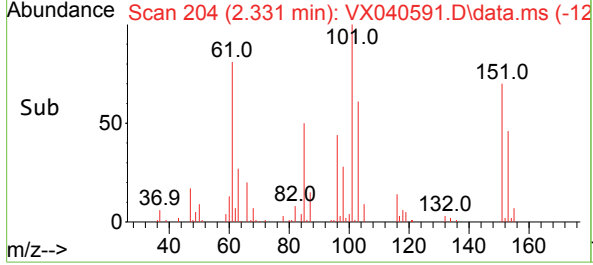
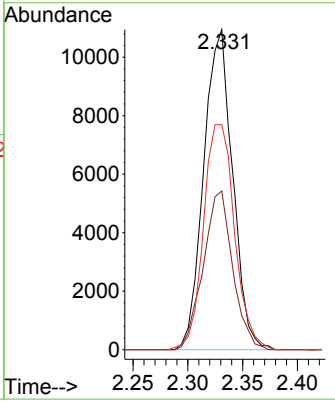
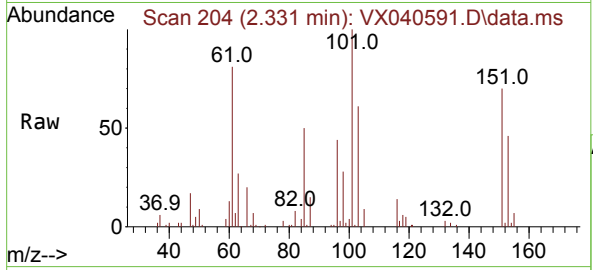




#9
 1,1,2-Trichlorotrifluoroethane
 Concen: 20.767 ug/l
 RT: 2.331 min Scan# 204
 Delta R.T. 0.006 min
 Lab File: VX040591.D
 Acq: 05 Mar 2024 16:24

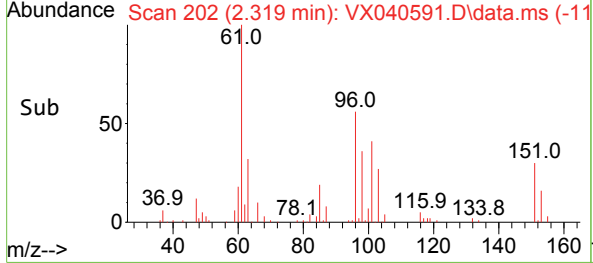
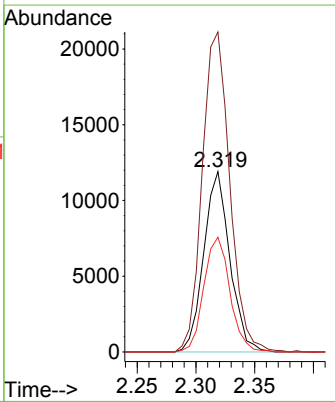
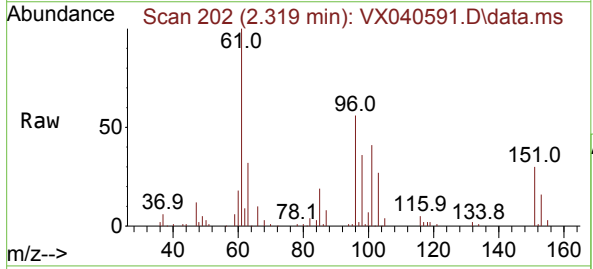
Instrument : MSVOA_X
 ClientSampleId : VSTDCCC020EC

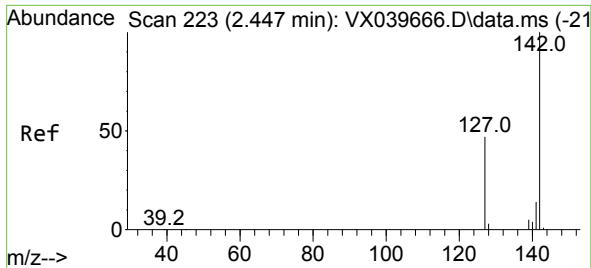
Tgt Ion	Resp	Lower	Upper
101	20090		
101	100		
85	50.3	0.0	95.2
151	75.5	0.0	136.8



#10
 1,1-Dichloroethene
 Concen: 20.007 ug/l
 RT: 2.319 min Scan# 202
 Delta R.T. 0.006 min
 Lab File: VX040591.D
 Acq: 05 Mar 2024 16:24

Tgt Ion	Resp	Lower	Upper
96	18427		
96	100		
61	177.4	138.3	207.5
98	63.6	49.8	74.6



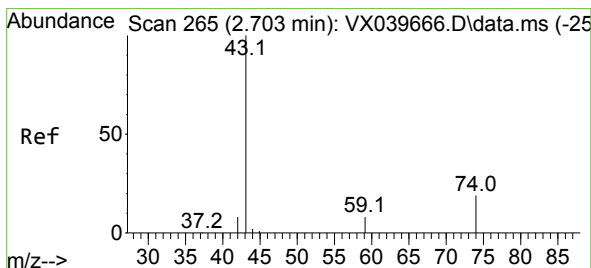
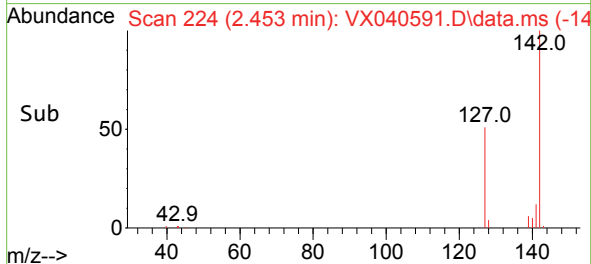
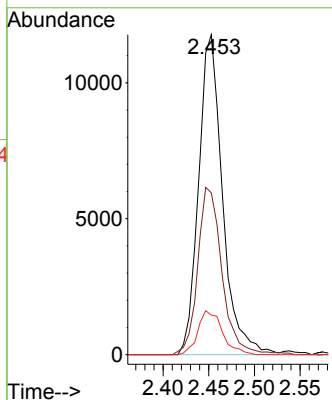
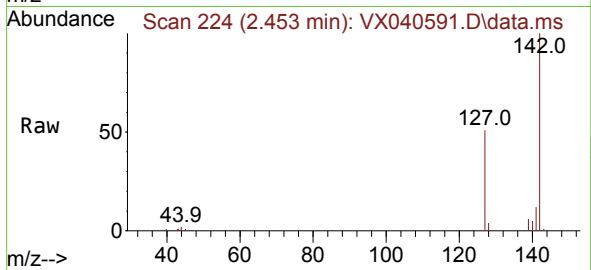


#11
 Methyl Iodide
 Concen: 19.212 ug/l
 RT: 2.453 min Scan# 21
 Delta R.T. 0.006 min
 Lab File: VX040591.D
 Acq: 05 Mar 2024 16:24

Instrument :
 MSVOA_X
 ClientSampleId :
 VSTDCCC020EC

Tgt Ion:142 Resp: 21401

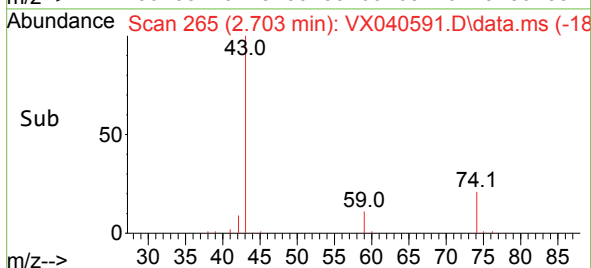
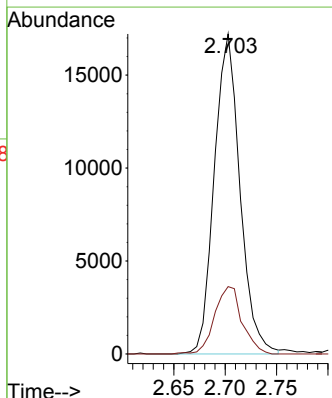
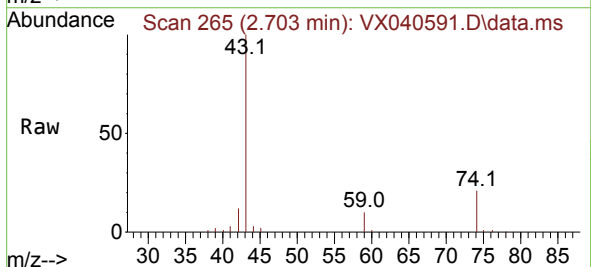
Ion	Ratio	Lower	Upper
142	100		
127	49.8	23.8	71.4
141	12.1	6.9	20.6

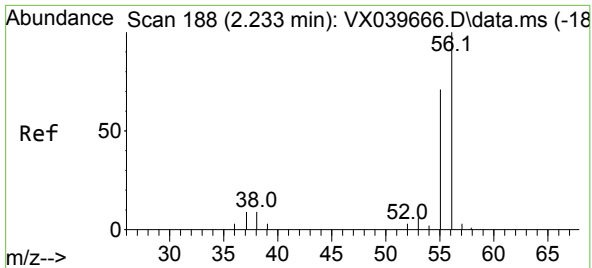


#12
 Methyl Acetate
 Concen: 19.668 ug/l
 RT: 2.703 min Scan# 265
 Delta R.T. -0.000 min
 Lab File: VX040591.D
 Acq: 05 Mar 2024 16:24

Tgt Ion: 43 Resp: 29840

Ion	Ratio	Lower	Upper
43	100		
74	21.0	17.8	26.6

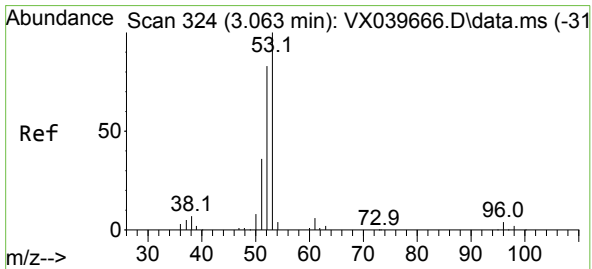
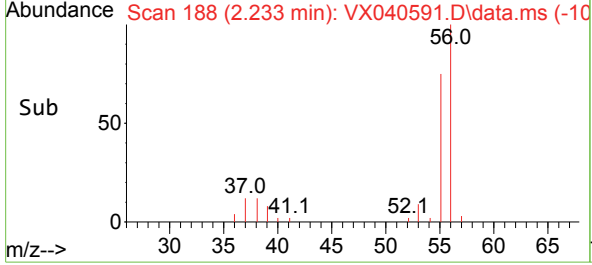
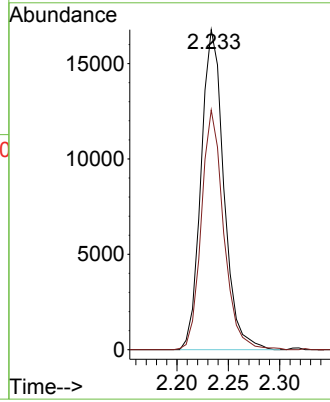
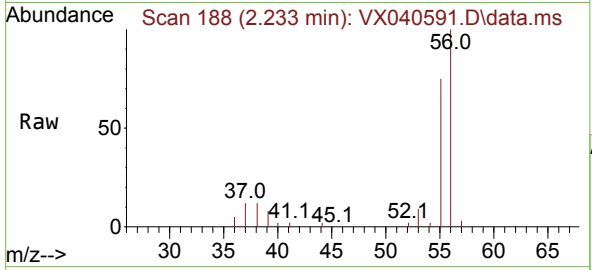




#13
 Acrolein
 Concen: 90.700 ug/l
 RT: 2.233 min Scan# 11
 Delta R.T. 0.000 min
 Lab File: VX040591.D
 Acq: 05 Mar 2024 16:24

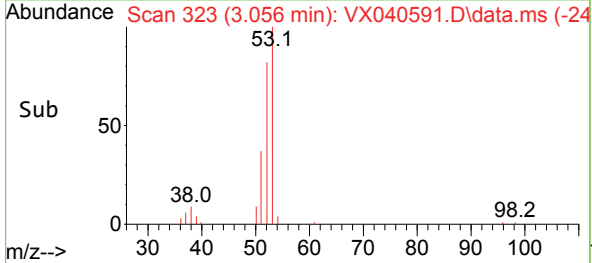
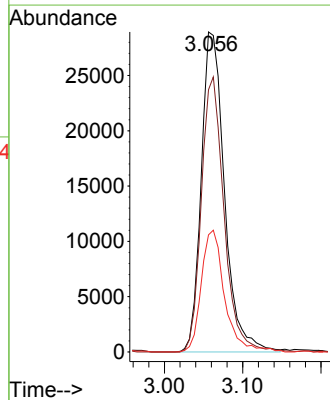
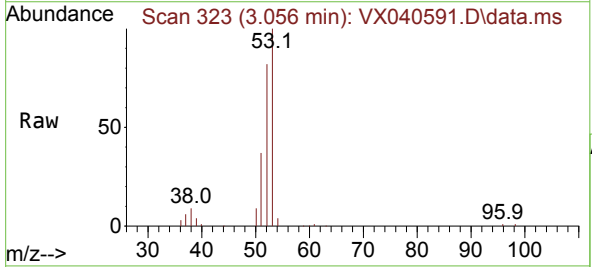
Instrument :
 MSVOA_X
 ClientSampleId :
 VSTDCCC020EC

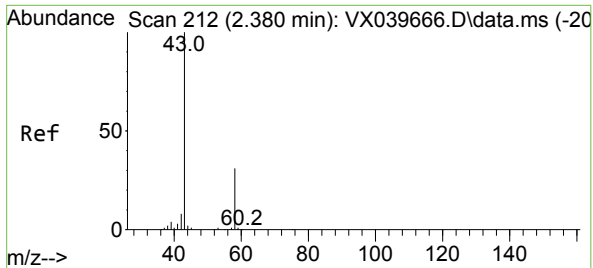
Tgt Ion: 56 Resp: 25942
 Ion Ratio Lower Upper
 56 100
 55 73.1 57.2 85.8



#14
 Acrylonitrile
 Concen: 100.063 ug/l
 RT: 3.056 min Scan# 323
 Delta R.T. -0.007 min
 Lab File: VX040591.D
 Acq: 05 Mar 2024 16:24

Tgt Ion: 53 Resp: 59779
 Ion Ratio Lower Upper
 53 100
 52 83.2 41.9 125.6
 51 37.4 18.3 54.9

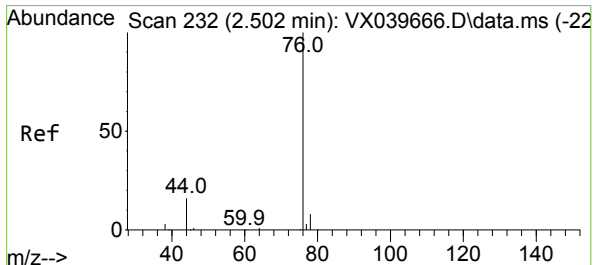
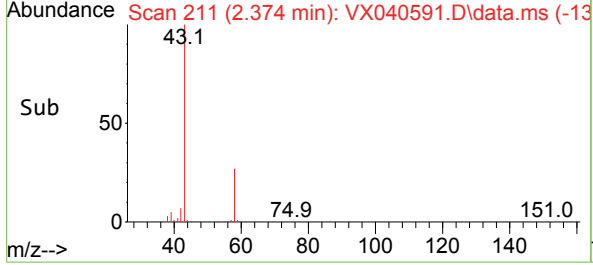
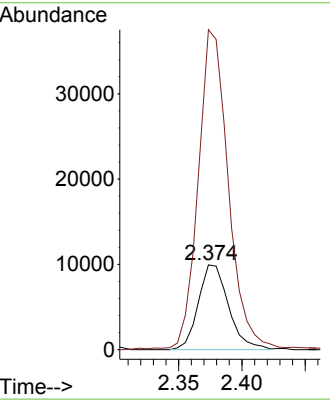
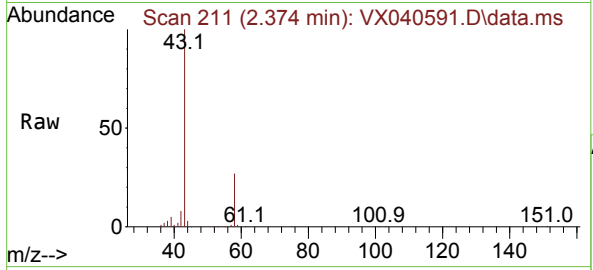




#15
 Acetone
 Concen: 96.805 ug/l
 RT: 2.374 min Scan# 211
 Delta R.T. -0.006 min
 Lab File: VX040591.D
 Acq: 05 Mar 2024 16:24

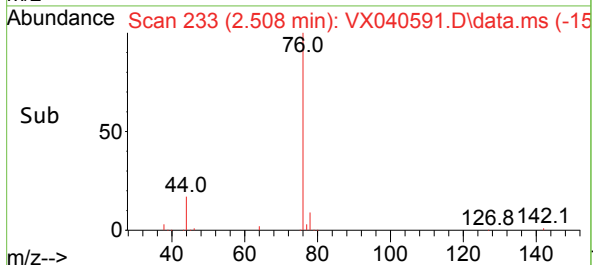
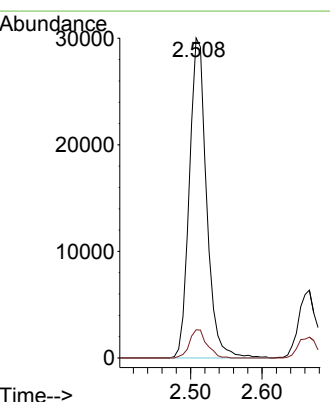
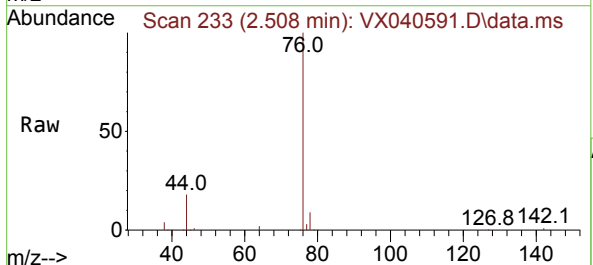
Instrument : MSVOA_X
 ClientSampleId : VSTDCCC020EC

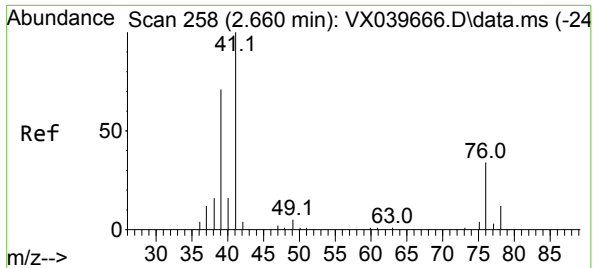
Tgt Ion: 58 Resp: 16531
 Ion Ratio Lower Upper
 58 100
 43 374.7 249.9 374.9



#16
 Carbon Disulfide
 Concen: 19.818 ug/l
 RT: 2.508 min Scan# 233
 Delta R.T. 0.006 min
 Lab File: VX040591.D
 Acq: 05 Mar 2024 16:24

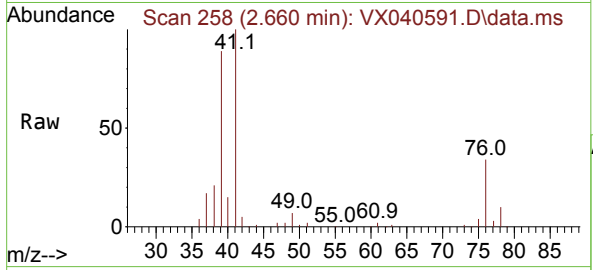
Tgt Ion: 76 Resp: 50165
 Ion Ratio Lower Upper
 76 100
 78 8.8 8.0 12.0





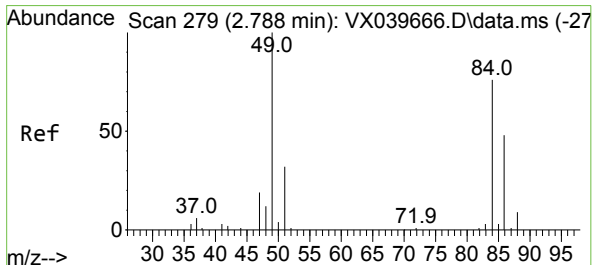
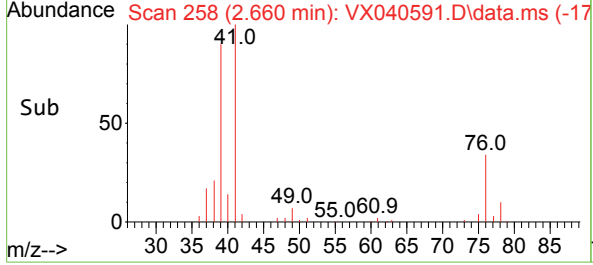
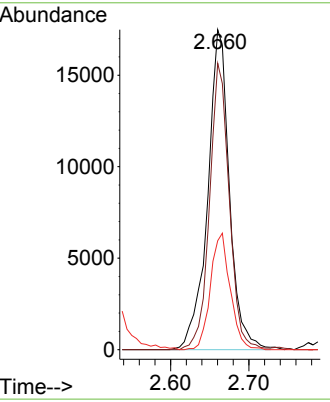
#17
 Allyl chloride
 Concen: 19.950 ug/l
 RT: 2.660 min Scan# 217
 Delta R.T. 0.000 min
 Lab File: VX040591.D
 Acq: 05 Mar 2024 16:24

Instrument : MSVOA_X
 ClientSampleId : VSTDCCC020EC



Tgt Ion: 41 Resp: 33909

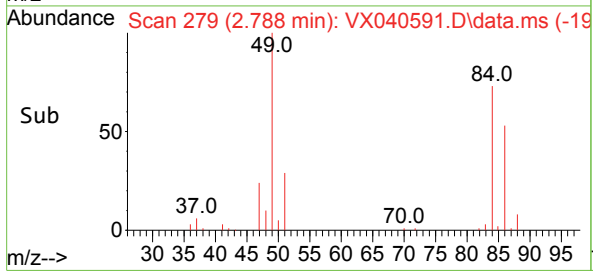
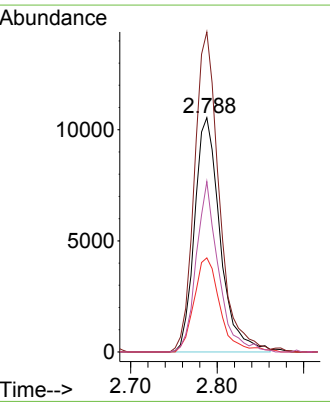
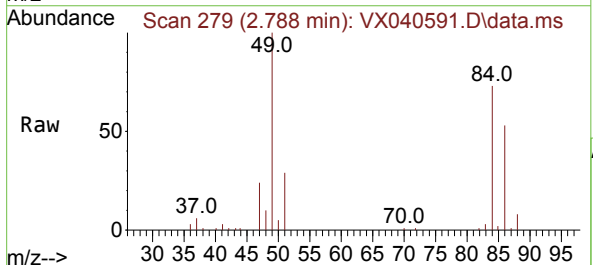
Ion	Ratio	Lower	Upper
41	100		
39	89.5	36.5	109.5
76	34.0	19.7	59.0

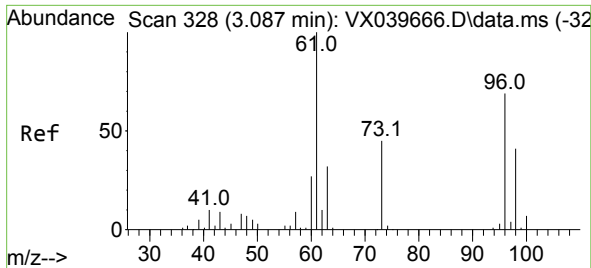


#18
 Methylene Chloride
 Concen: 20.517 ug/l
 RT: 2.788 min Scan# 279
 Delta R.T. 0.000 min
 Lab File: VX040591.D
 Acq: 05 Mar 2024 16:24

Tgt Ion: 84 Resp: 21575

Ion	Ratio	Lower	Upper
84	100		
49	136.6	103.8	155.8
51	40.2	31.8	47.6
86	72.8	50.8	76.2

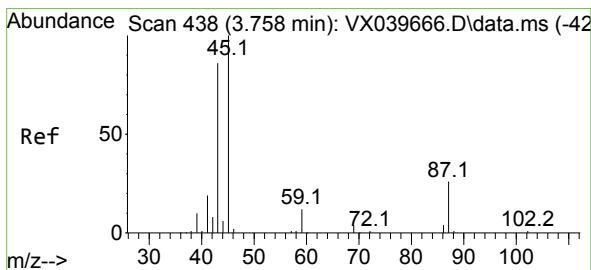
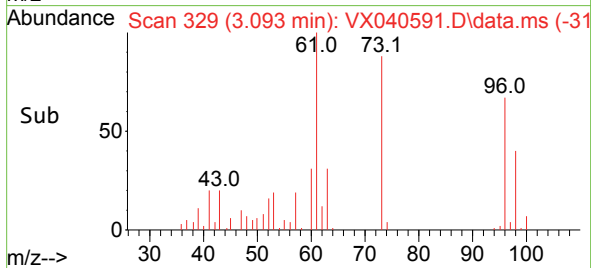
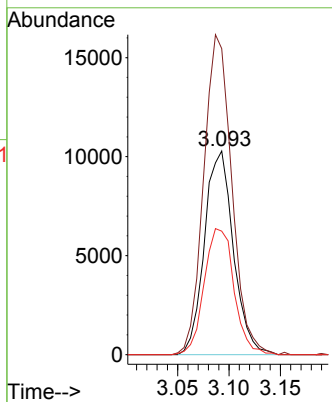
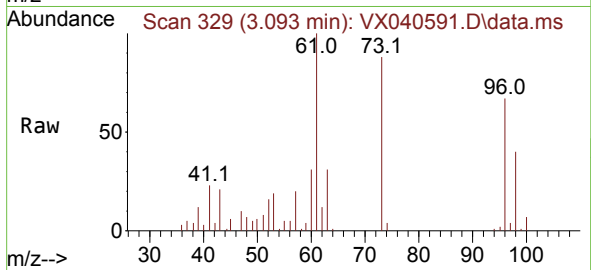




#19
 trans-1,2-Dichloroethene
 Concen: 20.035 ug/l
 RT: 3.093 min Scan# 31
 Delta R.T. 0.006 min
 Lab File: VX040591.D
 Acq: 05 Mar 2024 16:24

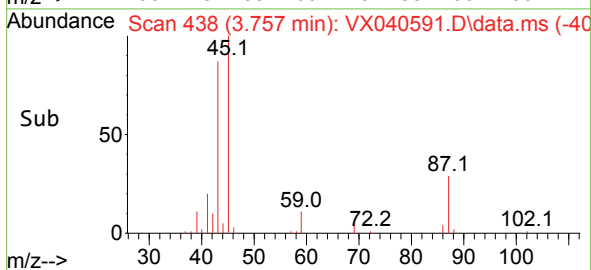
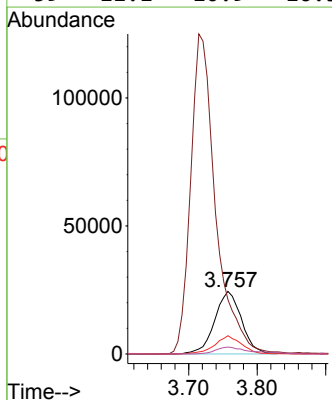
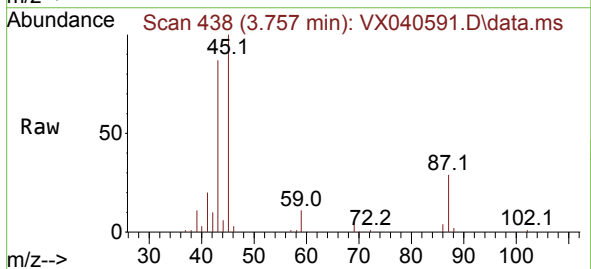
Instrument : MSVOA_X
 ClientSampleId : VSTDCCC020EC

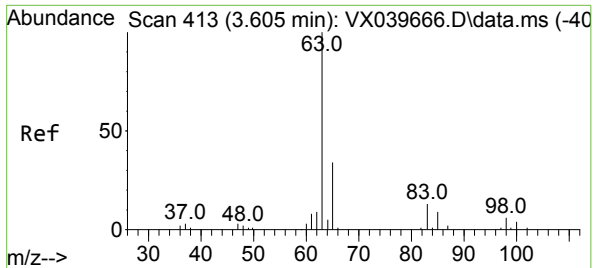
Tgt Ion: 96 Resp: 20146
 Ion Ratio Lower Upper
 96 100
 61 150.3 117.9 176.9
 98 60.6 51.0 76.6



#20
 Diisopropyl ether
 Concen: 19.552 ug/l
 RT: 3.757 min Scan# 438
 Delta R.T. -0.001 min
 Lab File: VX040591.D
 Acq: 05 Mar 2024 16:24

Tgt Ion: 45 Resp: 66461
 Ion Ratio Lower Upper
 45 100
 43 83.5 67.7 101.5
 87 29.2 21.5 32.3
 59 11.1 10.9 16.3



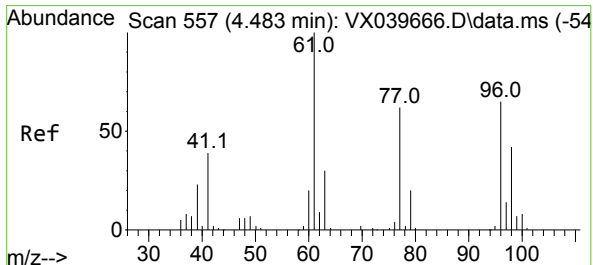
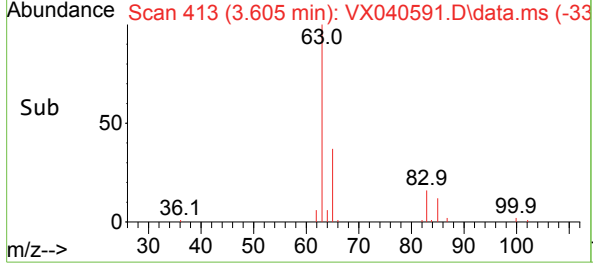
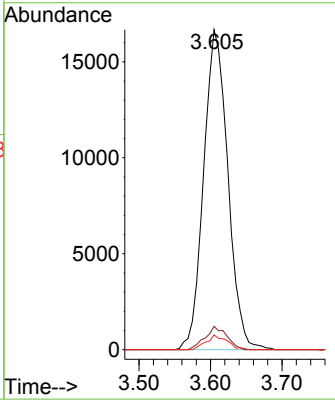
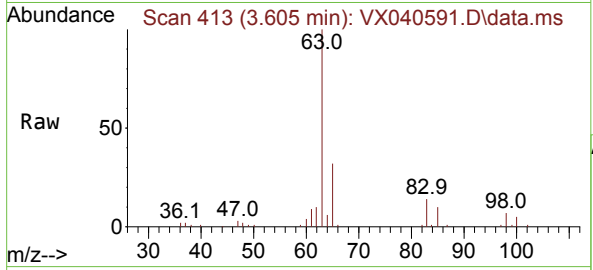


#21
 1,1-Dichloroethane
 Concen: 20.071 ug/l
 RT: 3.605 min Scan# 413
 Delta R.T. 0.000 min
 Lab File: VX040591.D
 Acq: 05 Mar 2024 16:24

Instrument : MSVOA_X
 ClientSampleId : VSTDCCC020EC

Tgt Ion: 63 Resp: 39260

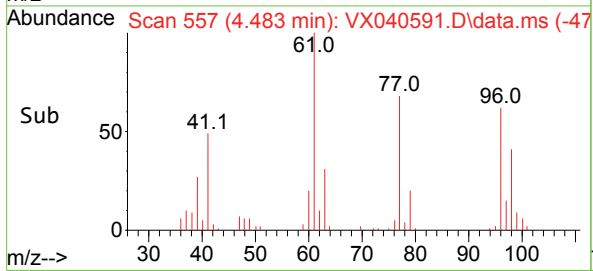
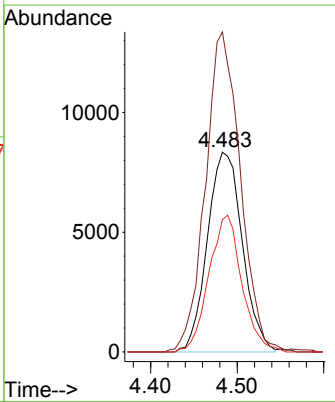
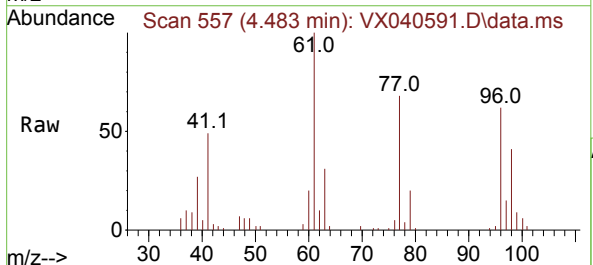
Ion	Ratio	Lower	Upper
63	100		
98	7.3	2.9	8.8
100	4.6	2.0	5.8

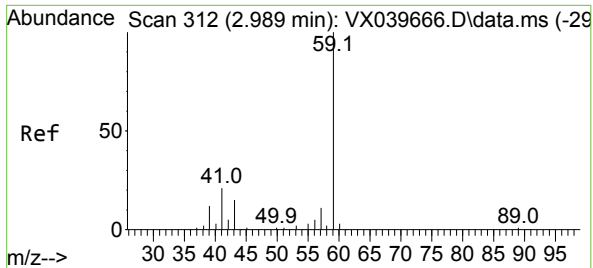


#22
 cis-1,2-Dichloroethene
 Concen: 20.031 ug/l
 RT: 4.483 min Scan# 557
 Delta R.T. -0.000 min
 Lab File: VX040591.D
 Acq: 05 Mar 2024 16:24

Tgt Ion: 96 Resp: 23391

Ion	Ratio	Lower	Upper
96	100		
61	159.8	119.8	179.6
98	64.4	50.9	76.3

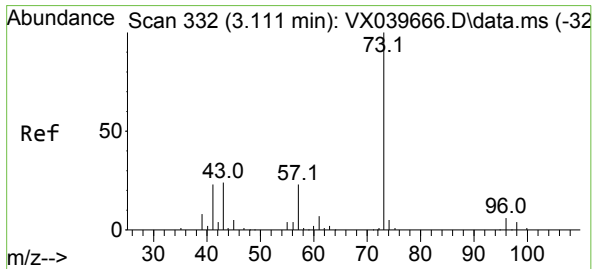
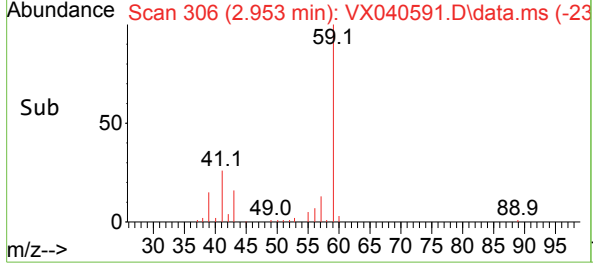
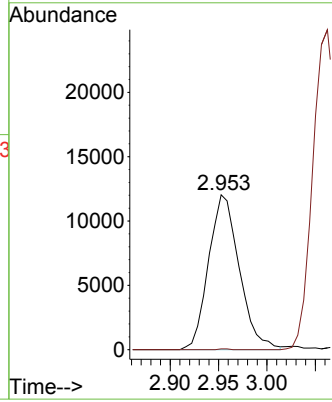
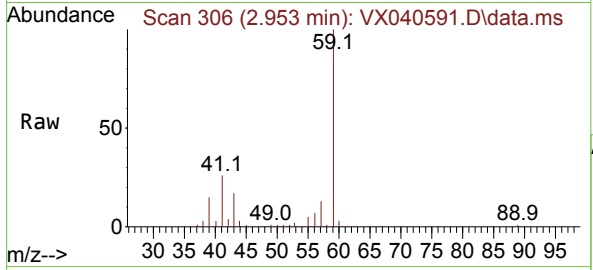




#23
 tert-Butyl Alcohol
 Concen: 94.298 ug/l
 RT: 2.953 min Scan# 306
 Delta R.T. -0.036 min
 Lab File: VX040591.D
 Acq: 05 Mar 2024 16:24

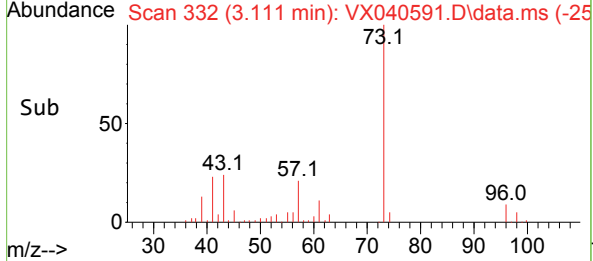
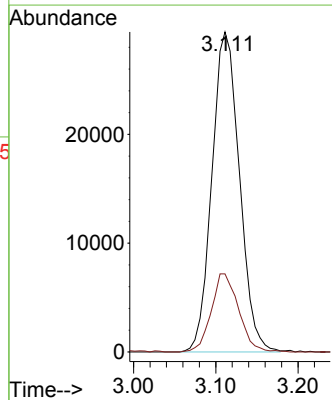
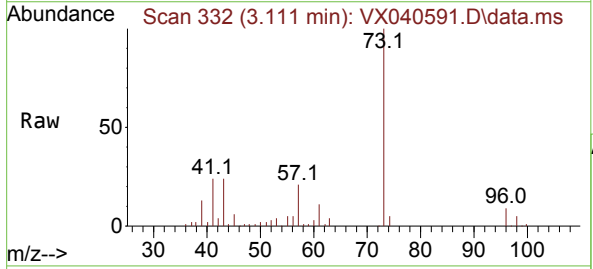
Instrument : MSVOA_X
 ClientSampleId : VSTDCCC020EC

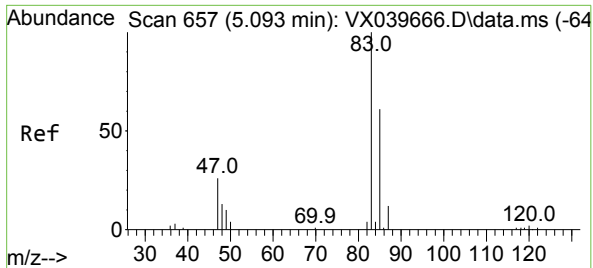
Tgt Ion: 59 Resp: 26617
 Ion Ratio Lower Upper
 59 100
 52 0.2 0.0 0.0#



#24
 Methyl tert-Butyl Ether
 Concen: 20.139 ug/l
 RT: 3.111 min Scan# 332
 Delta R.T. 0.000 min
 Lab File: VX040591.D
 Acq: 05 Mar 2024 16:24

Tgt Ion: 73 Resp: 68455
 Ion Ratio Lower Upper
 73 100
 43 24.3 17.0 25.6

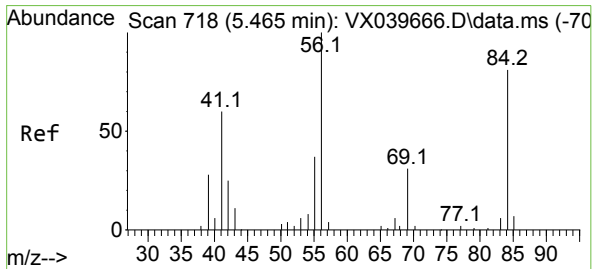
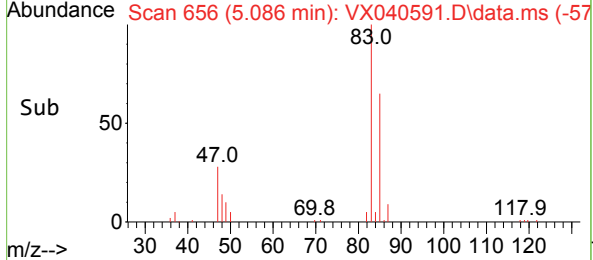
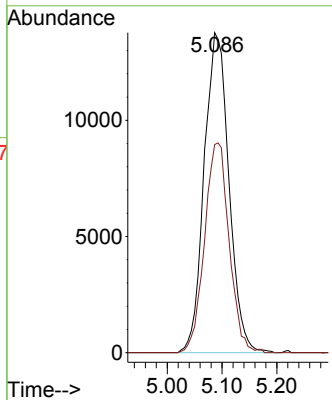
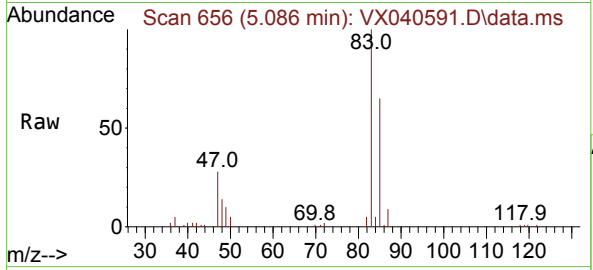




#25
 Chloroform
 Concen: 20.185 ug/l
 RT: 5.086 min Scan# 611
 Delta R.T. -0.007 min
 Lab File: VX040591.D
 Acq: 05 Mar 2024 16:24

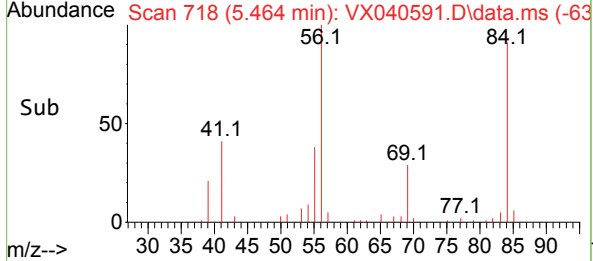
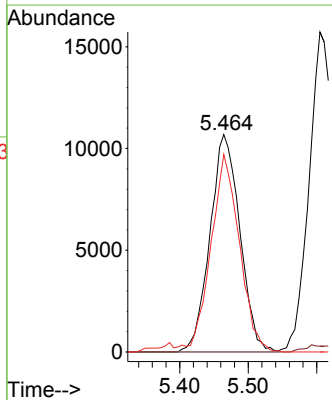
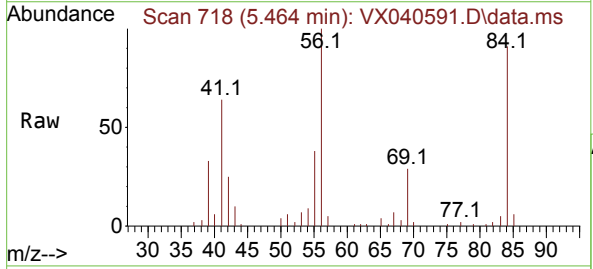
Instrument : MSVOA_X
 ClientSampleId : VSTDCCC020EC

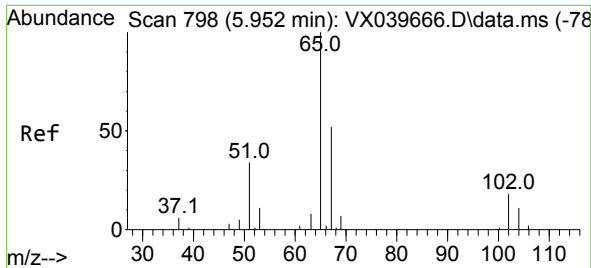
Tgt Ion: 83 Resp: 43215
 Ion Ratio Lower Upper
 83 100
 85 65.0 54.6 81.8



#26
 Cyclohexane
 Concen: 20.498 ug/l
 RT: 5.464 min Scan# 718
 Delta R.T. -0.001 min
 Lab File: VX040591.D
 Acq: 05 Mar 2024 16:24

Tgt Ion: 56 Resp: 32359
 Ion Ratio Lower Upper
 56 100
 89 0.0 0.0 0.0
 84 86.3 67.2 100.8

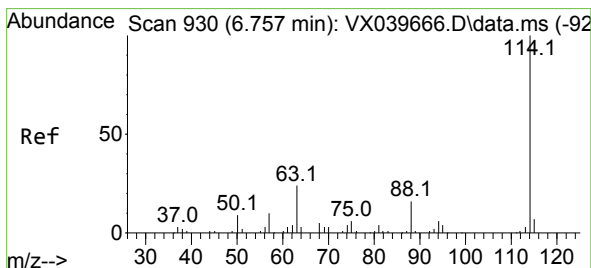
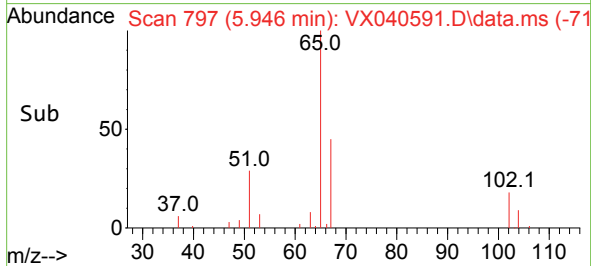
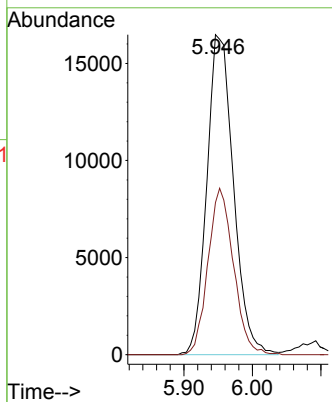
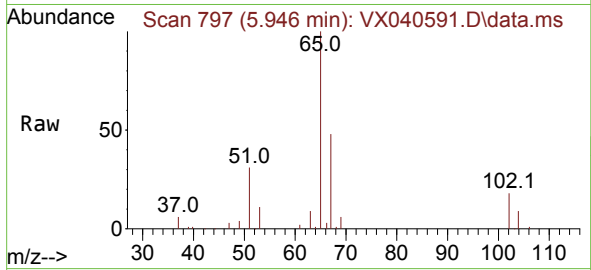




#27
 1,2-Dichloroethane-d4
 Concen: 28.880 ug/l
 RT: 5.946 min Scan# 797
 Delta R.T. -0.006 min
 Lab File: VX040591.D
 Acq: 05 Mar 2024 16:24

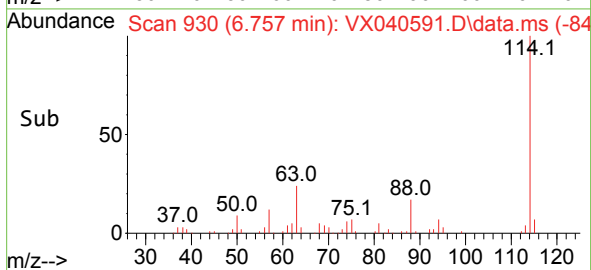
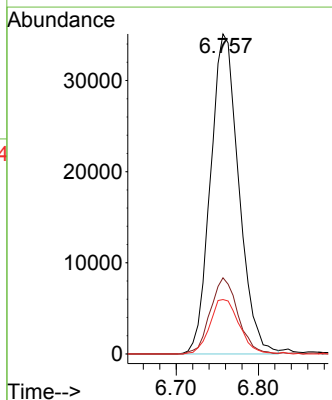
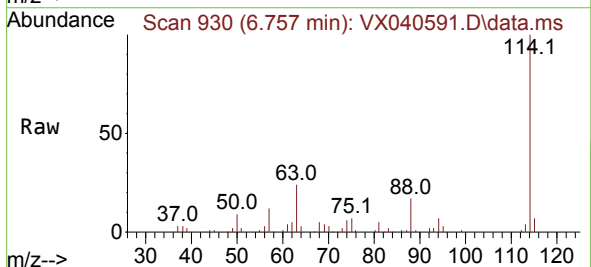
Instrument : MSVOA_X
 ClientSampleId : VSTDCCC020EC

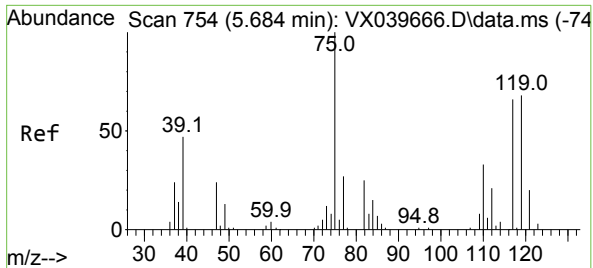
Tgt Ion: 65 Resp: 44549
 Ion Ratio Lower Upper
 65 100
 67 49.7 42.5 63.7



#28
 1,4-Difluorobenzene
 Concen: 30.000 ug/l
 RT: 6.757 min Scan# 930
 Delta R.T. -0.000 min
 Lab File: VX040591.D
 Acq: 05 Mar 2024 16:24

Tgt Ion: 114 Resp: 84032
 Ion Ratio Lower Upper
 114 100
 63 23.3 17.0 25.4
 88 17.6 12.7 19.1



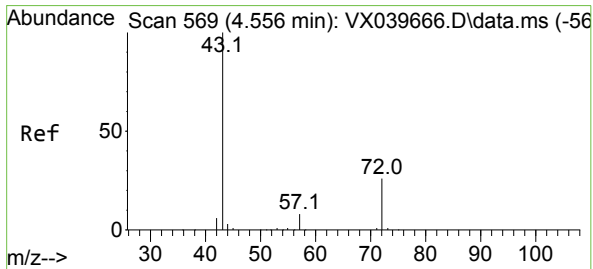
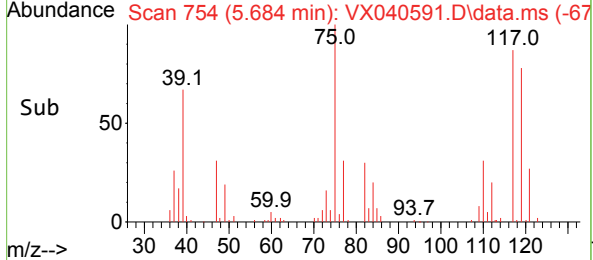
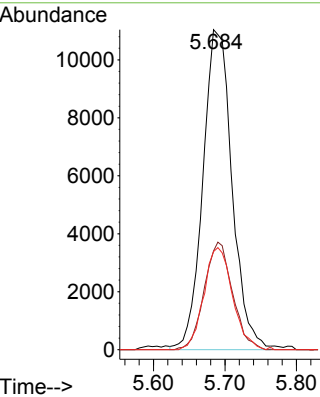
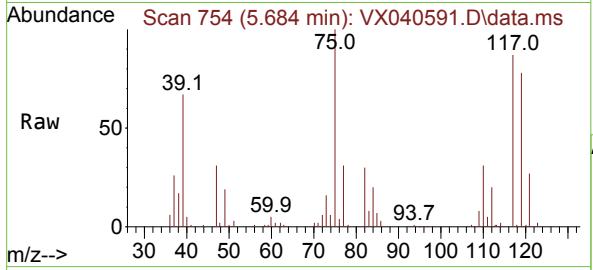


#29
 1,1-Dichloropropene
 Concen: 21.517 ug/l
 RT: 5.684 min Scan# 71
 Delta R.T. -0.000 min
 Lab File: VX040591.D
 Acq: 05 Mar 2024 16:24

Instrument : MSVOA_X
 ClientSampleId : VSTDC0020EC

Tgt Ion: 75 Resp: 31297

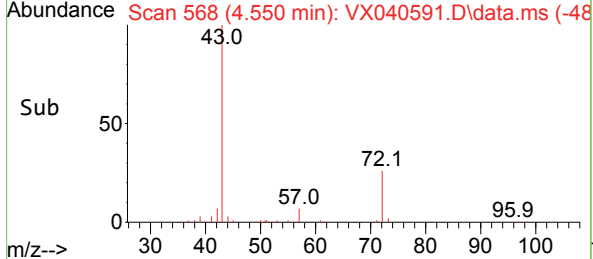
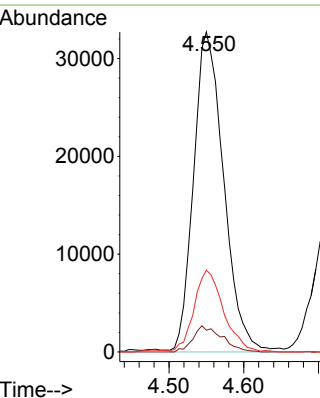
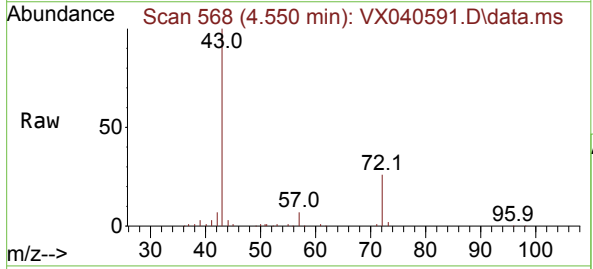
Ion	Ratio	Lower	Upper
75	100		
110	32.5	0.0	71.2
77	31.3	0.0	62.6

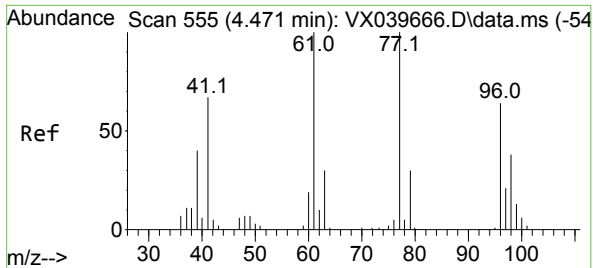


#30
 2-Butanone
 Concen: 102.763 ug/l
 RT: 4.550 min Scan# 568
 Delta R.T. -0.006 min
 Lab File: VX040591.D
 Acq: 05 Mar 2024 16:24

Tgt Ion: 43 Resp: 91211

Ion	Ratio	Lower	Upper
43	100		
57	7.9	6.6	10.0
72	25.0	20.6	31.0

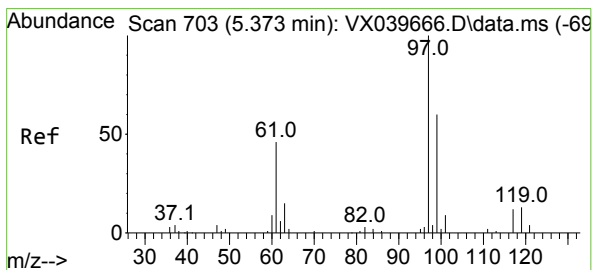
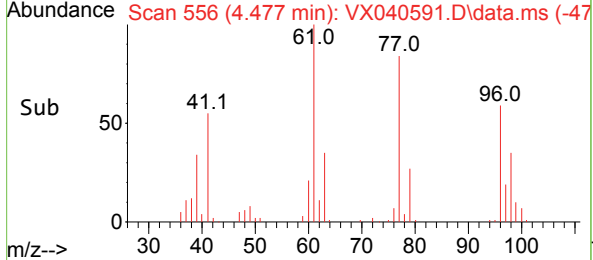
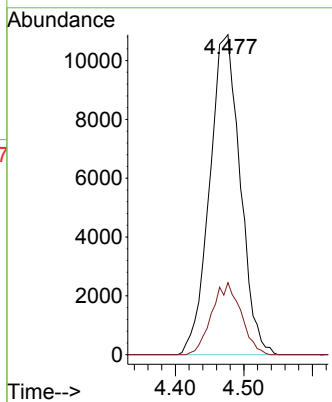
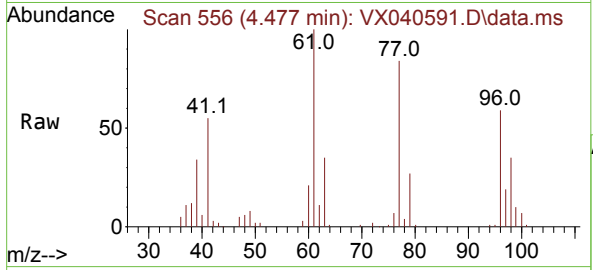




#31
 2,2-Dichloropropane
 Concen: 21.475 ug/l
 RT: 4.477 min Scan# 511
 Delta R.T. 0.006 min
 Lab File: VX040591.D
 Acq: 05 Mar 2024 16:24

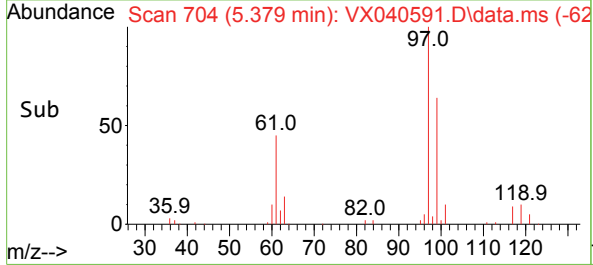
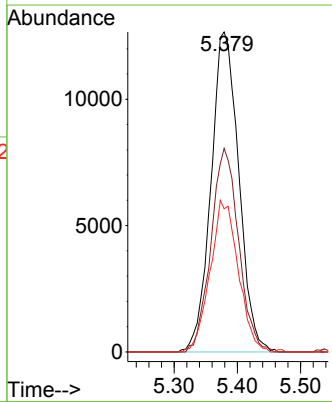
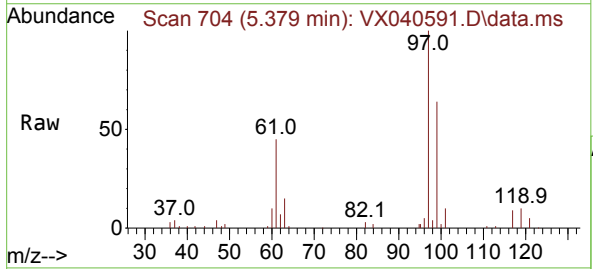
Instrument : MSVOA_X
 ClientSampleId : VSTDCCC020EC

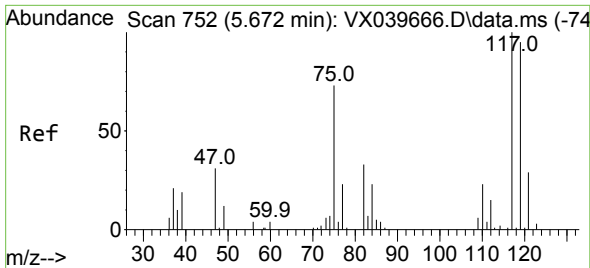
Tgt Ion: 77 Resp: 33713
 Ion Ratio Lower Upper
 77 100
 97 21.5 18.2 27.4



#32
 1,1,1-Trichloroethane
 Concen: 21.098 ug/l
 RT: 5.379 min Scan# 704
 Delta R.T. 0.006 min
 Lab File: VX040591.D
 Acq: 05 Mar 2024 16:24

Tgt Ion: 97 Resp: 38668
 Ion Ratio Lower Upper
 97 100
 99 63.2 52.6 79.0
 61 47.9 36.9 55.3

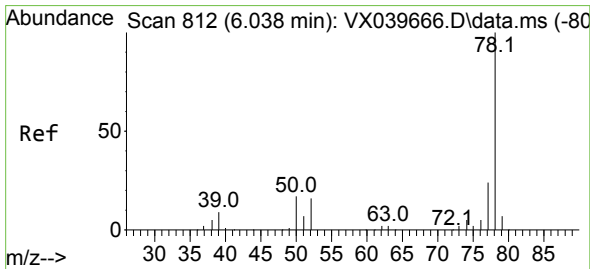
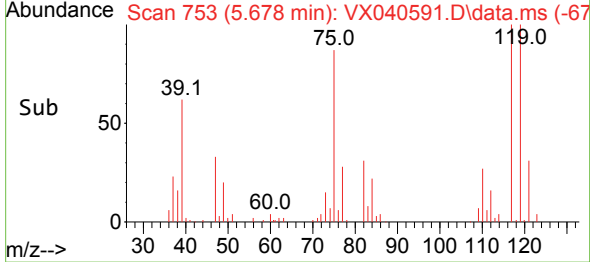
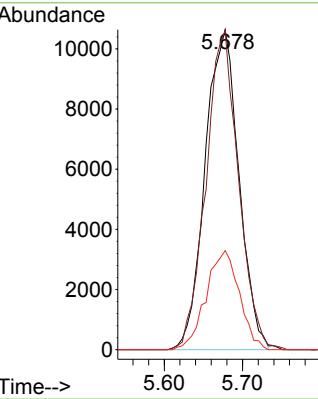
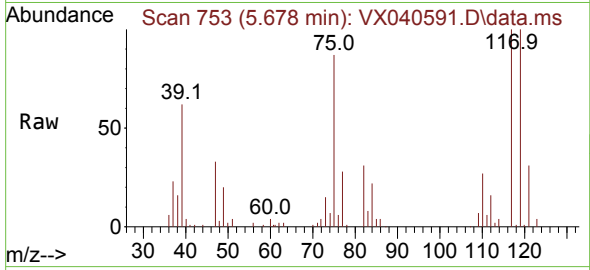




#33
 Carbon Tetrachloride
 Concen: 20.619 ug/l
 RT: 5.678 min Scan# 753
 Delta R.T. 0.006 min
 Lab File: VX040591.D
 Acq: 05 Mar 2024 16:24

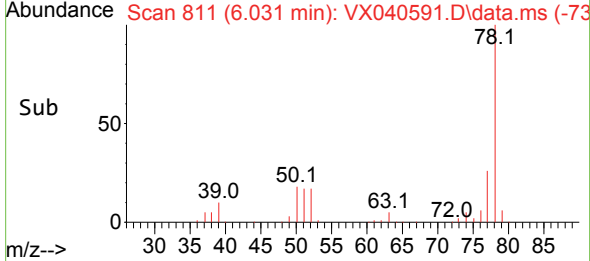
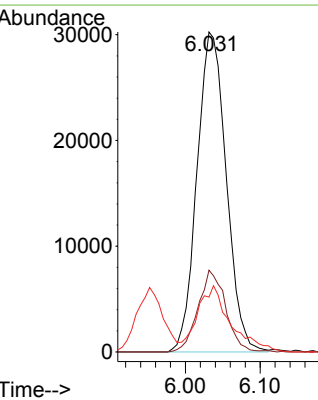
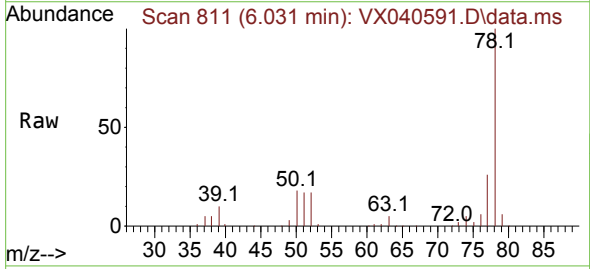
Instrument : MSVOA_X
 ClientSampleId : VSTDCCC020EC

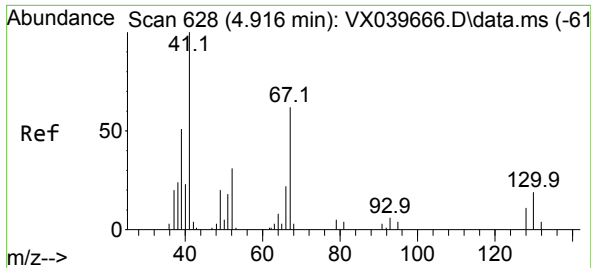
Tgt Ion	Resp	Lower	Upper
117	31795		
117	100		
119	99.8	78.2	117.4
121	31.0	24.7	37.1



#34
 Benzene
 Concen: 21.004 ug/l
 RT: 6.031 min Scan# 811
 Delta R.T. -0.007 min
 Lab File: VX040591.D
 Acq: 05 Mar 2024 16:24

Tgt Ion	Resp	Lower	Upper
78	82475		
78	100		
77	25.6	19.3	28.9
51	15.2	14.4	21.6



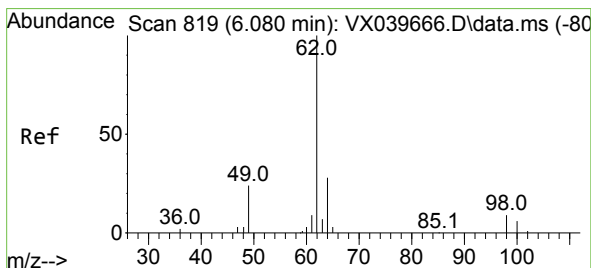
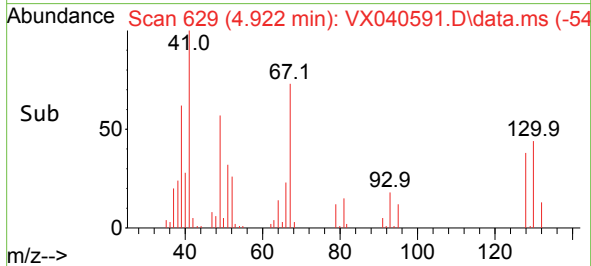
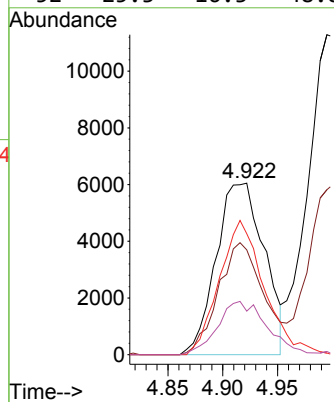
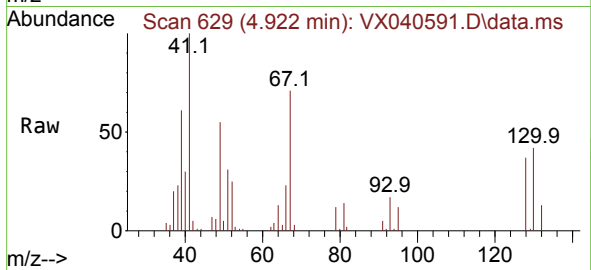


#35
 Methacrylonitrile
 Concen: 20.284 ug/l
 RT: 4.922 min Scan# 61
 Delta R.T. 0.006 min
 Lab File: VX040591.D
 Acq: 05 Mar 2024 16:24

Instrument :
 MSVOA_X
 ClientSampleId :
 VSTDCCC020EC

Tgt Ion: 41 Resp: 18483

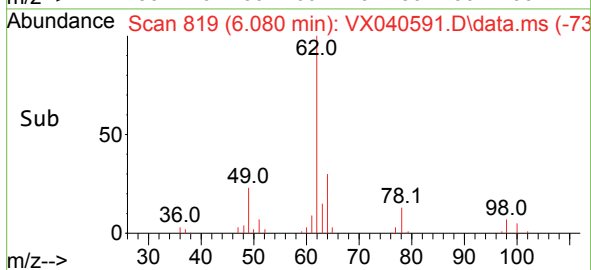
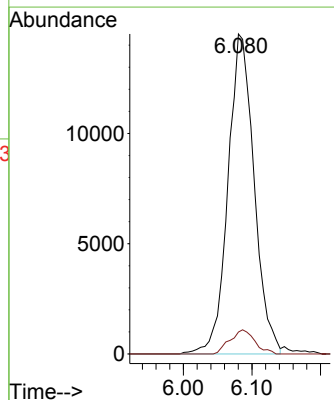
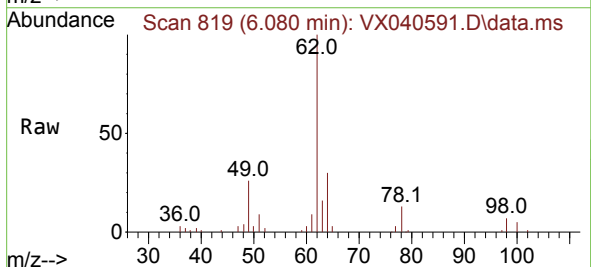
Ion	Ratio	Lower	Upper
41	100		
39	61.1	28.2	84.7
67	70.5	34.5	103.5
52	25.3	16.3	48.8

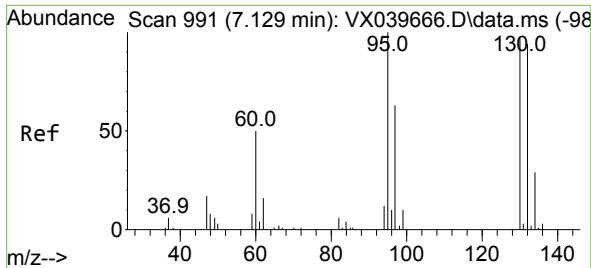


#36
 1,2-Dichloroethane
 Concen: 21.217 ug/l
 RT: 6.080 min Scan# 819
 Delta R.T. 0.000 min
 Lab File: VX040591.D
 Acq: 05 Mar 2024 16:24

Tgt Ion: 62 Resp: 38519

Ion	Ratio	Lower	Upper
62	100		
98	7.2	7.0	10.4

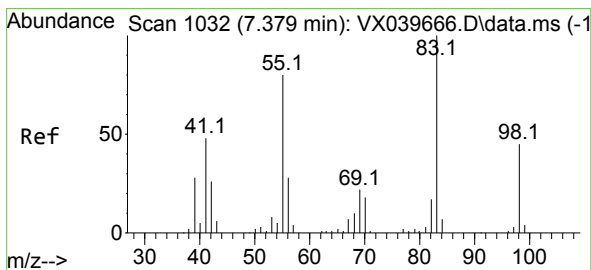
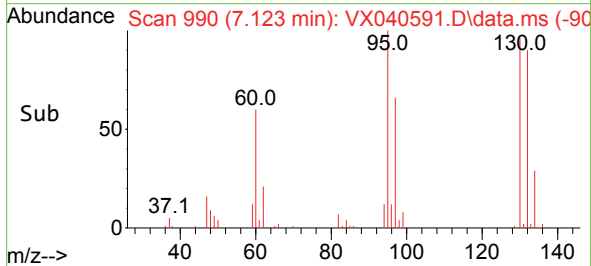
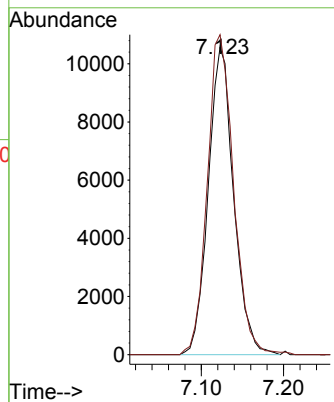
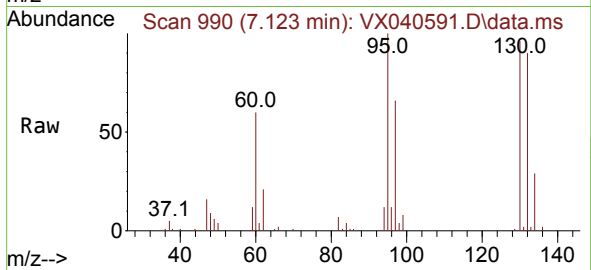




#37
 Trichloroethene
 Concen: 21.532 ug/l
 RT: 7.123 min Scan# 991
 Delta R.T. -0.006 min
 Lab File: VX040591.D
 Acq: 05 Mar 2024 16:24

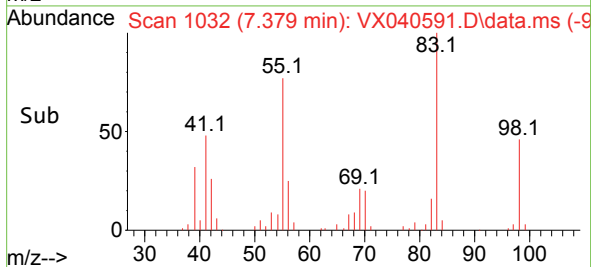
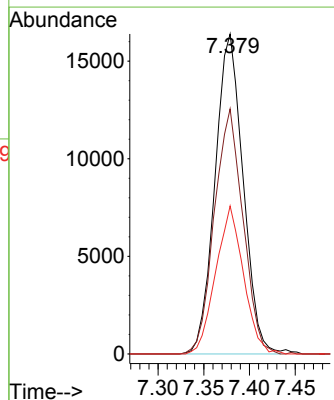
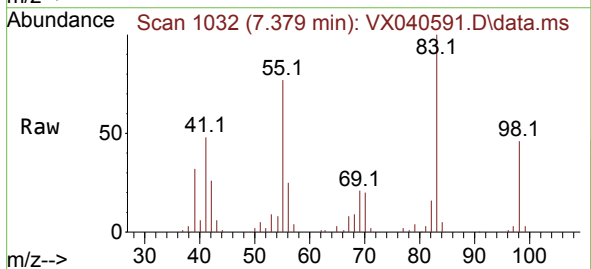
Instrument : MSVOA_X
 ClientSampleId : VSTDCCC020EC

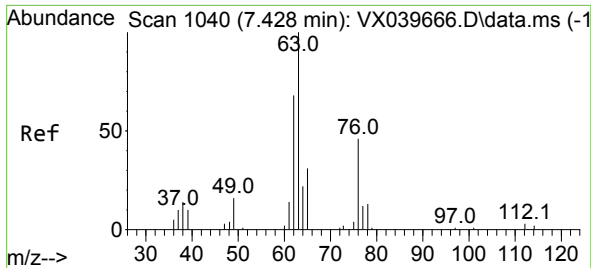
Tgt Ion:130 Resp: 22720
 Ion Ratio Lower Upper
 130 100
 95 104.1 85.8 128.8



#38
 Methylcyclohexane
 Concen: 22.325 ug/l
 RT: 7.379 min Scan# 1032
 Delta R.T. -0.000 min
 Lab File: VX040591.D
 Acq: 05 Mar 2024 16:24

Tgt Ion: 83 Resp: 34966
 Ion Ratio Lower Upper
 83 100
 55 78.2 38.6 116.0
 98 45.6 22.3 66.8

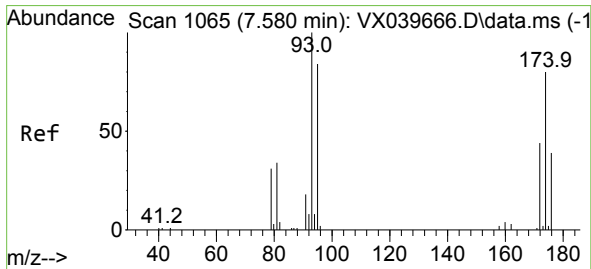
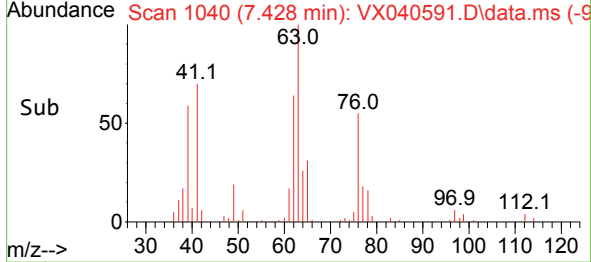
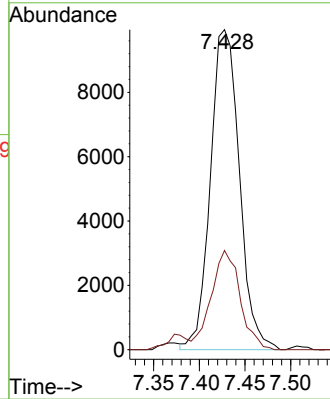
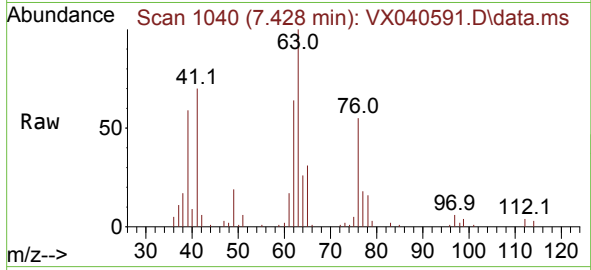




#39
 1,2-Dichloropropane
 Concen: 21.948 ug/l
 RT: 7.428 min Scan# 1040
 Delta R.T. -0.000 min
 Lab File: VX040591.D
 Acq: 05 Mar 2024 16:24

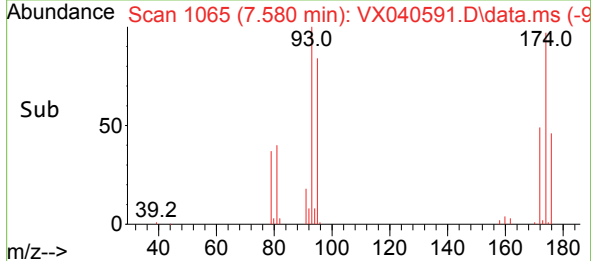
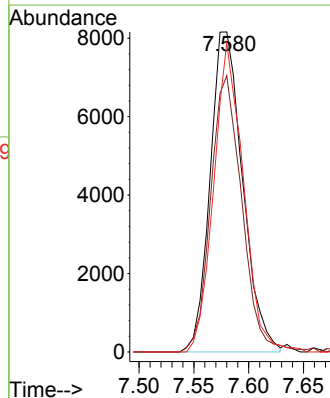
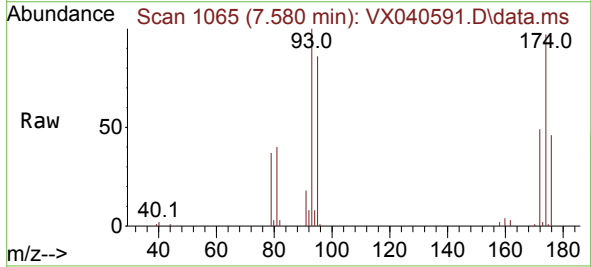
Instrument : MSVOA_X
 ClientSampleId : VSTDCCC020EC

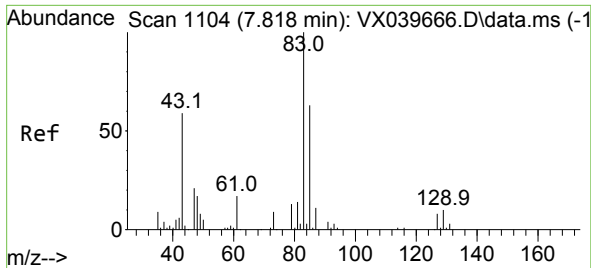
Tgt Ion: 63 Resp: 21943
 Ion Ratio Lower Upper
 63 100
 65 31.0 24.6 37.0



#40
 Dibromomethane
 Concen: 21.404 ug/l
 RT: 7.580 min Scan# 1065
 Delta R.T. -0.000 min
 Lab File: VX040591.D
 Acq: 05 Mar 2024 16:24

Tgt Ion: 93 Resp: 16811
 Ion Ratio Lower Upper
 93 100
 95 82.7 0.0 163.4
 174 88.4 0.0 166.4

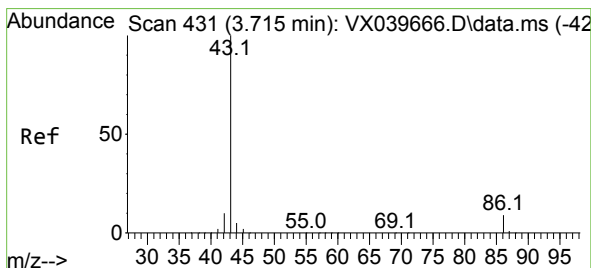
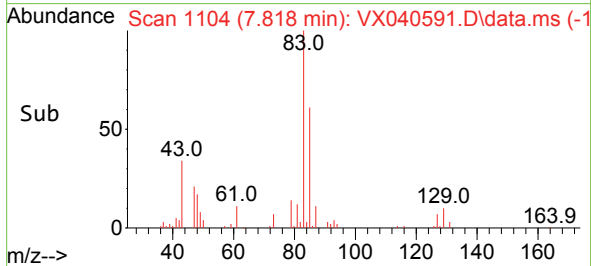
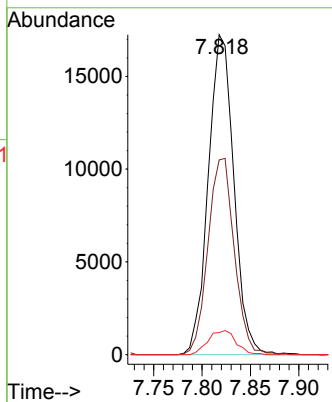
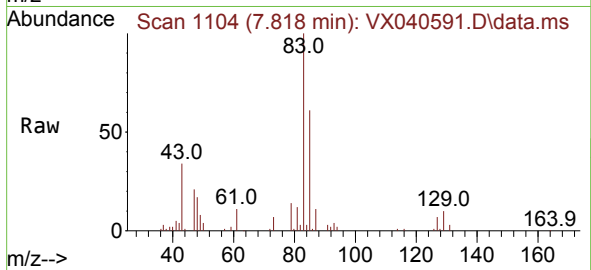




#41
 Bromodichloromethane
 Concen: 20.275 ug/l
 RT: 7.818 min Scan# 1104
 Delta R.T. -0.000 min
 Lab File: VX040591.D
 Acq: 05 Mar 2024 16:24

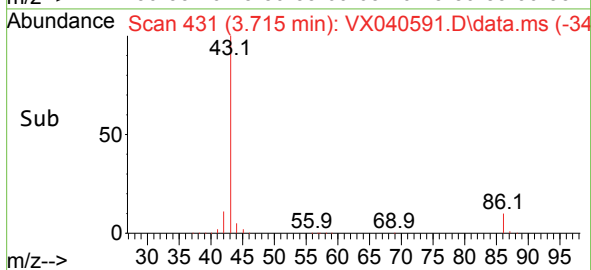
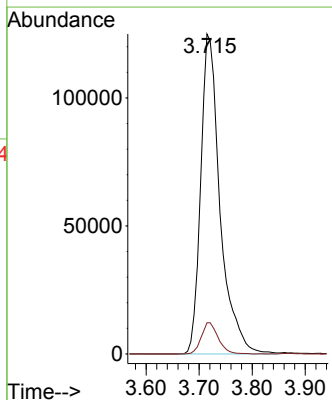
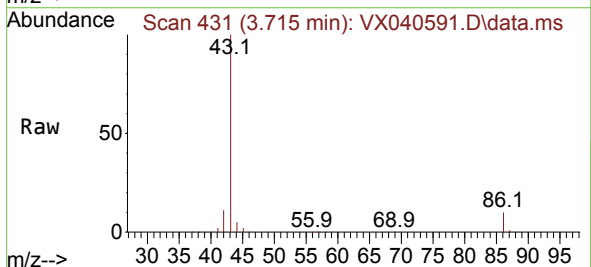
Instrument : MSVOA_X
 ClientSampleId : VSTDCCC020EC

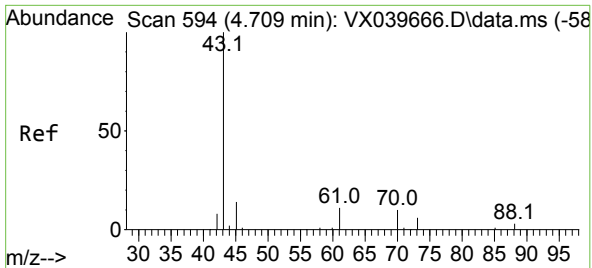
Tgt Ion	Resp	Lower	Upper
83	31680	100	100
85	60.9	50.8	76.2
127	6.9	5.9	8.9



#42
 Vinyl Acetate
 Concen: 103.740 ug/l
 RT: 3.715 min Scan# 431
 Delta R.T. -0.000 min
 Lab File: VX040591.D
 Acq: 05 Mar 2024 16:24

Tgt Ion	Resp	Lower	Upper
43	317027	100	100
86	8.5	6.7	10.1

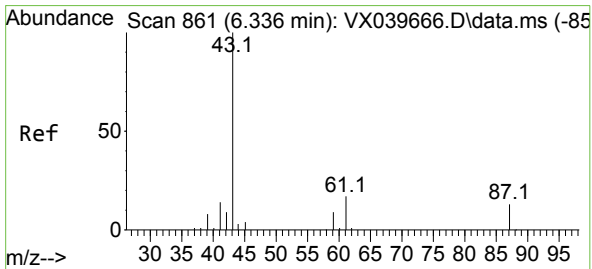
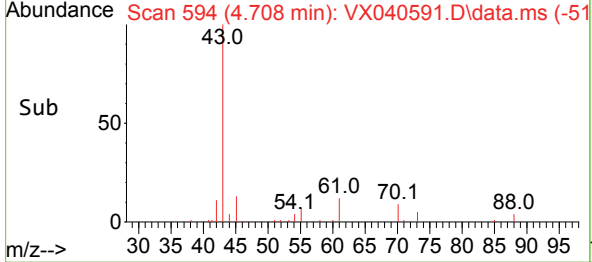
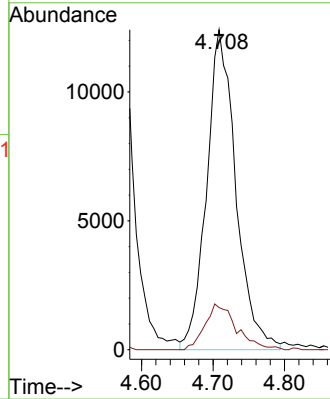
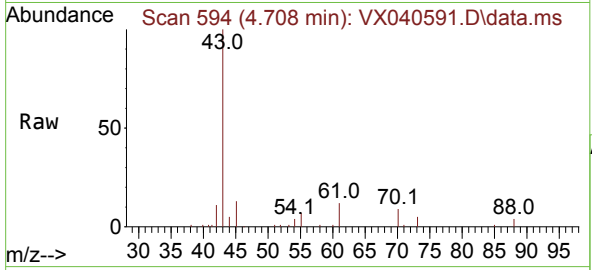




#43
 Ethyl Acetate
 Concen: 21.111 ug/l
 RT: 4.708 min Scan# 594
 Delta R.T. -0.001 min
 Lab File: VX040591.D
 Acq: 05 Mar 2024 16:24

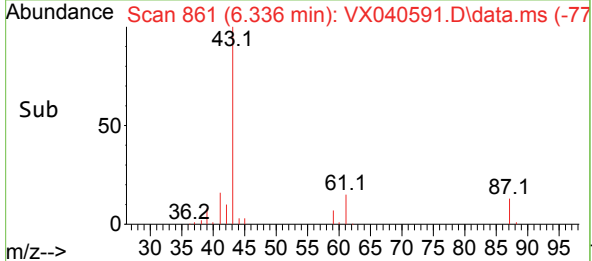
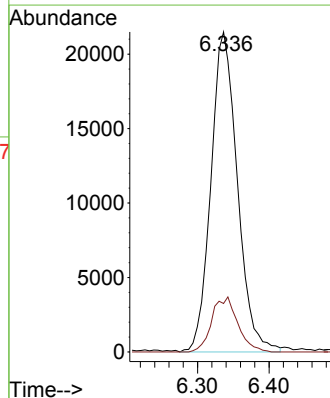
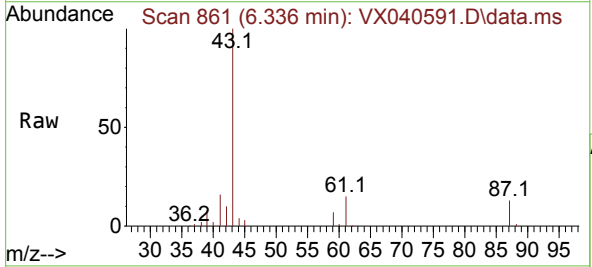
Instrument : MSVOA_X
 ClientSampleId : VSTDCCC020EC

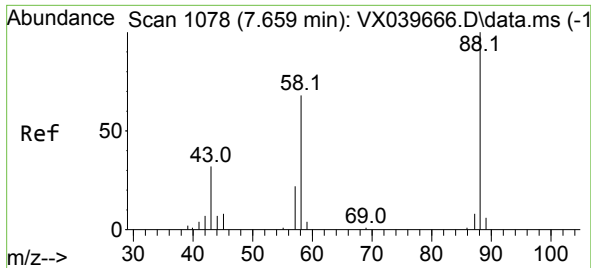
Tgt Ion: 43 Resp: 35290
 Ion Ratio Lower Upper
 43 100
 45 15.2 11.8 17.8



#44
 Isopropyl Acetate
 Concen: 20.701 ug/l
 RT: 6.336 min Scan# 861
 Delta R.T. 0.000 min
 Lab File: VX040591.D
 Acq: 05 Mar 2024 16:24

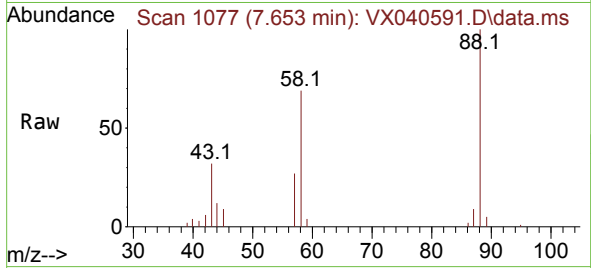
Tgt Ion: 43 Resp: 55236
 Ion Ratio Lower Upper
 43 100
 61 8.8 15.6 23.4#





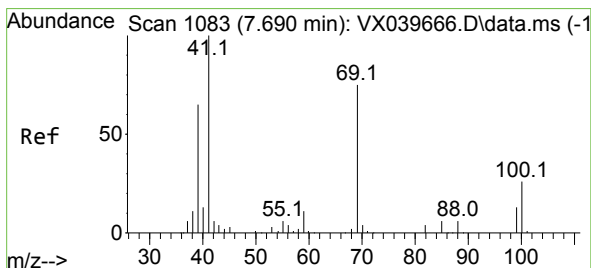
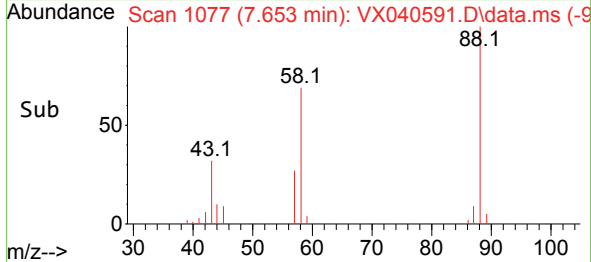
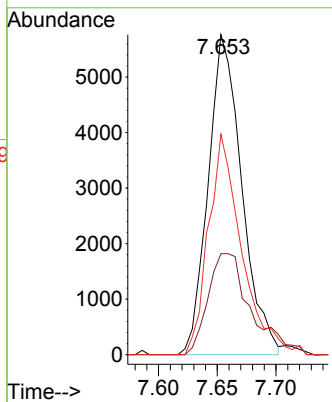
#45
 1,4-Dioxane
 Concen: 418.876 ug/l
 RT: 7.653 min Scan# 1077
 Delta R.T. -0.006 min
 Lab File: VX040591.D
 Acq: 05 Mar 2024 16:24

Instrument : MSVOA_X
 ClientSampleId : VSTDCCC020EC



Tgt Ion: 88 Resp: 11489

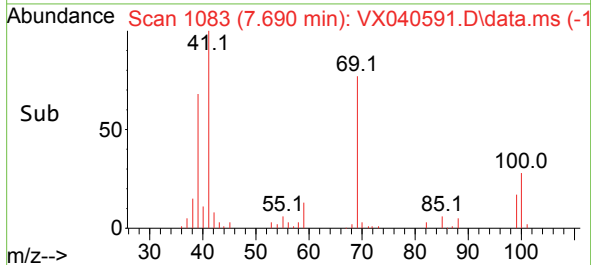
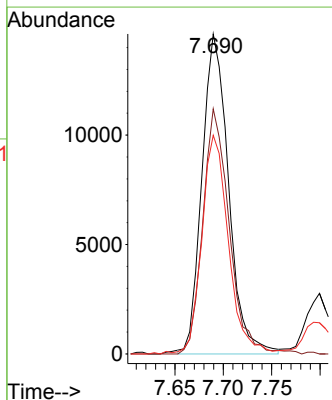
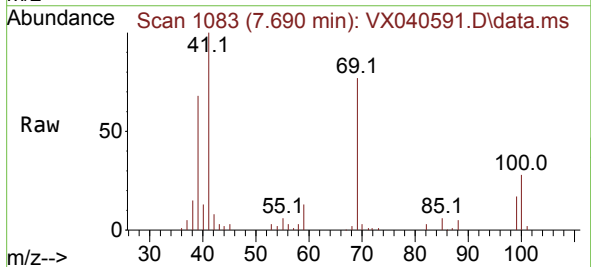
Ion	Ratio	Lower	Upper
88	100		
43	35.9	28.1	42.1
58	67.5	57.7	86.5

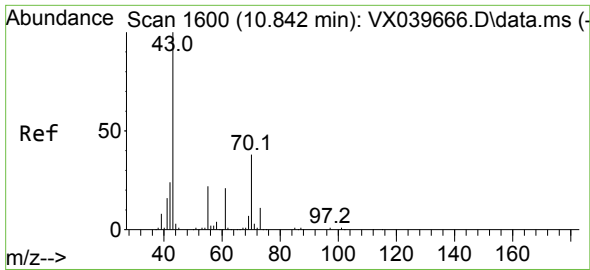


#46
 Methyl methacrylate
 Concen: 21.093 ug/l
 RT: 7.690 min Scan# 1083
 Delta R.T. -0.000 min
 Lab File: VX040591.D
 Acq: 05 Mar 2024 16:24

Tgt Ion: 41 Resp: 27954

Ion	Ratio	Lower	Upper
41	100		
69	77.5	39.6	118.8
39	68.5	30.1	90.3

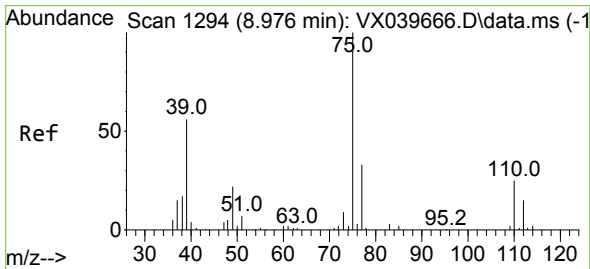
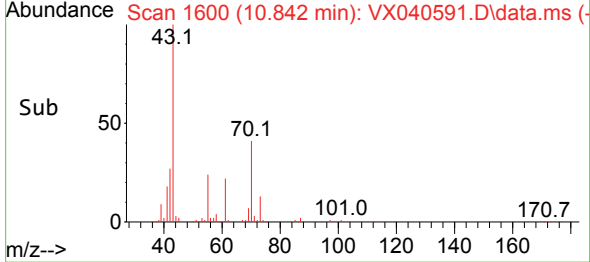
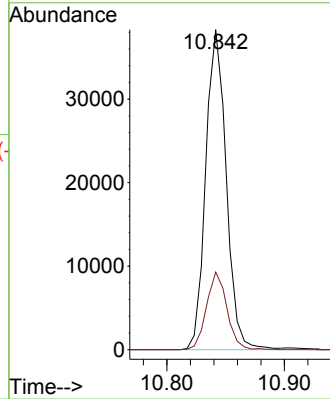
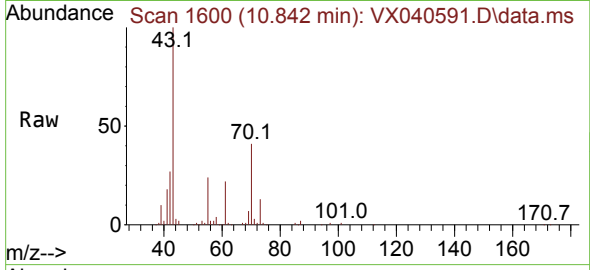




#47
 n-amy1 Acetate
 Concen: 20.199 ug/l
 RT: 10.842 min Scan# 1600
 Delta R.T. -0.000 min
 Lab File: VX040591.D
 Acq: 05 Mar 2024 16:24

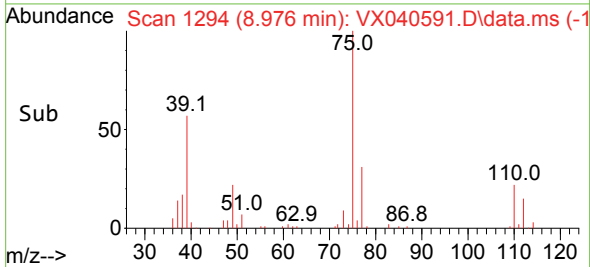
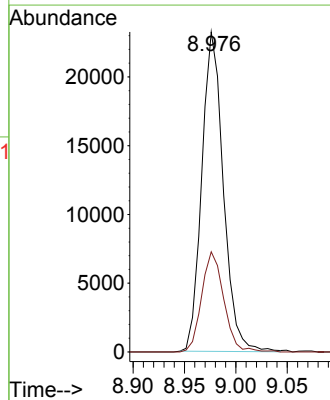
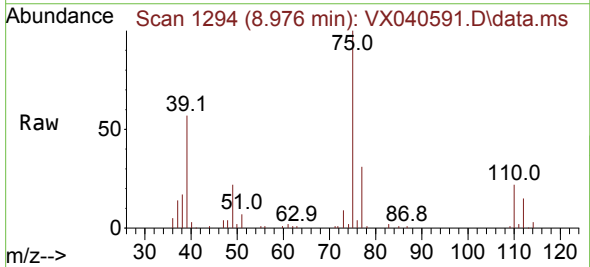
Instrument : MSVOA_X
 ClientSampleId : VSTDCCC020EC

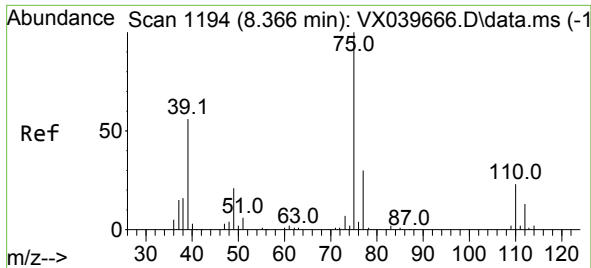
Tgt Ion: 43 Resp: 46451
 Ion Ratio Lower Upper
 43 100
 55 24.0 18.2 27.2



#48
 t-1,3-Dichloropropene
 Concen: 20.570 ug/l
 RT: 8.976 min Scan# 1294
 Delta R.T. 0.000 min
 Lab File: VX040591.D
 Acq: 05 Mar 2024 16:24

Tgt Ion: 75 Resp: 33970
 Ion Ratio Lower Upper
 75 100
 77 31.4 26.8 40.2

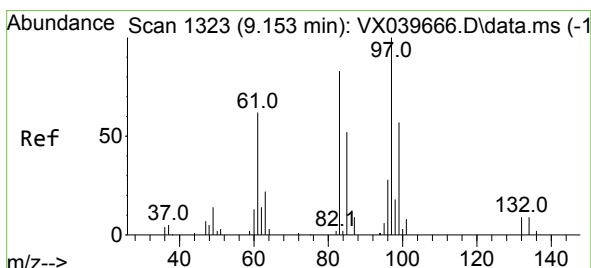
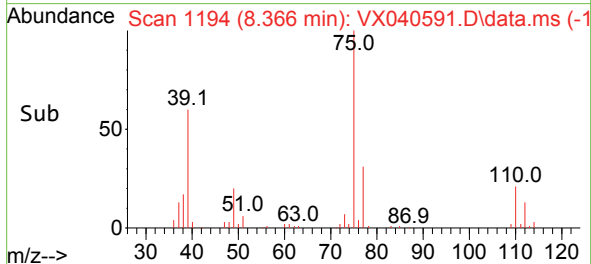
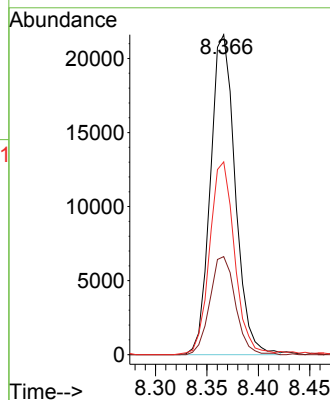
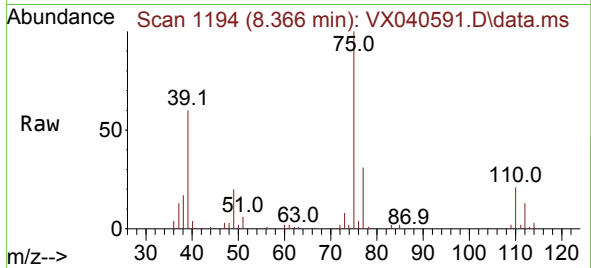




#49
 cis-1,3-Dichloropropene
 Concen: 21.548 ug/l
 RT: 8.366 min Scan# 1194
 Delta R.T. 0.000 min
 Lab File: VX040591.D
 Acq: 05 Mar 2024 16:24

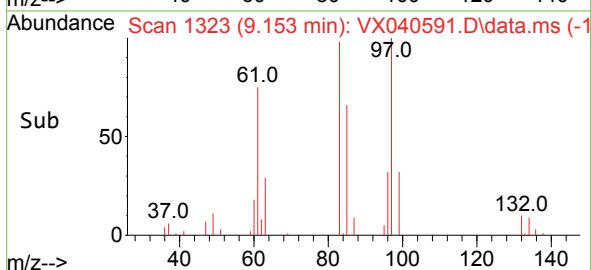
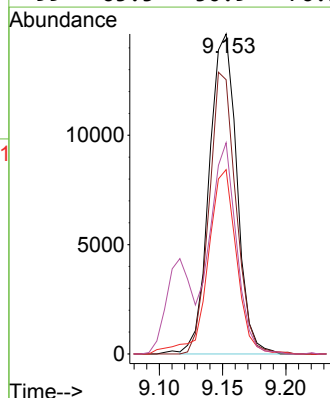
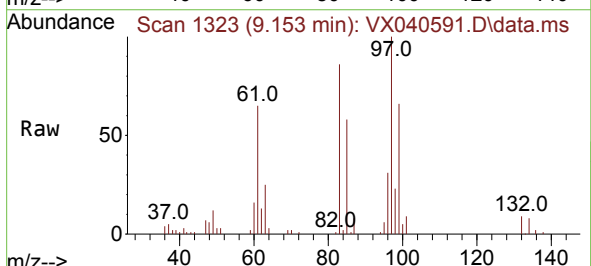
Instrument : MSVOA_X
 ClientSampleId : VSTDCCC020EC

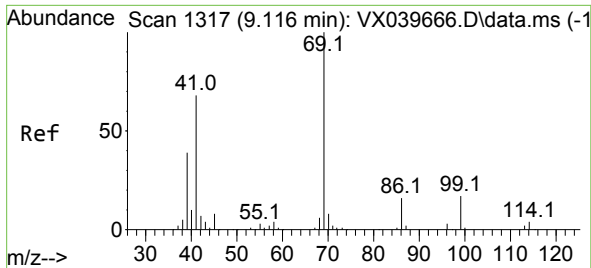
Tgt Ion	Resp	Lower	Upper
75	36251		
75	100		
77	30.6	24.4	36.6
39	59.9	40.6	60.8



#50
 1,1,2-Trichloroethane
 Concen: 21.262 ug/l
 RT: 9.153 min Scan# 1323
 Delta R.T. -0.000 min
 Lab File: VX040591.D
 Acq: 05 Mar 2024 16:24

Tgt Ion	Resp	Lower	Upper
97	22182		
97	100		
83	85.7	69.0	103.6
85	57.0	46.3	69.5
99	65.5	50.9	76.3

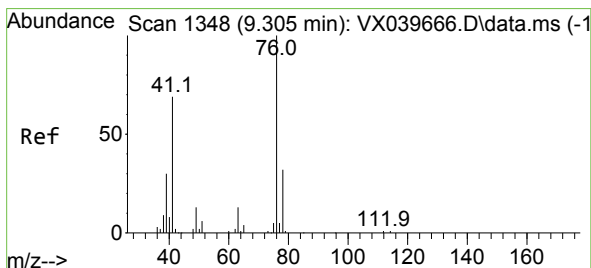
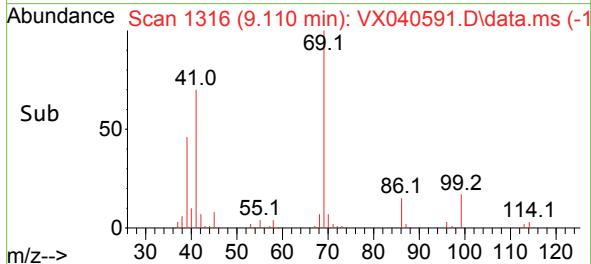
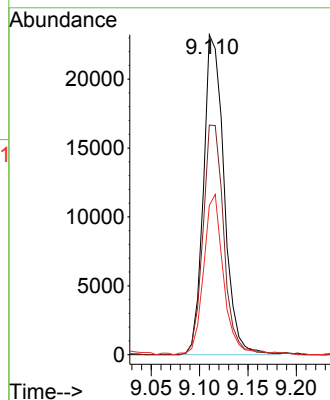
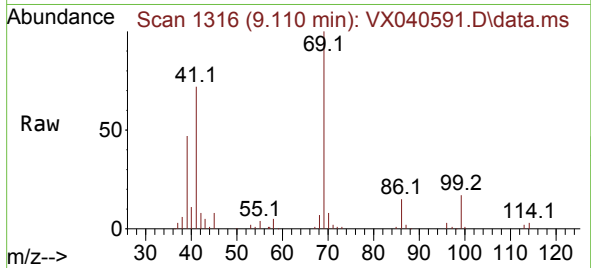




#51
 Ethyl methacrylate
 Concen: 20.982 ug/l
 RT: 9.110 min Scan# 11
 Delta R.T. -0.006 min
 Lab File: VX040591.D
 Acq: 05 Mar 2024 16:24

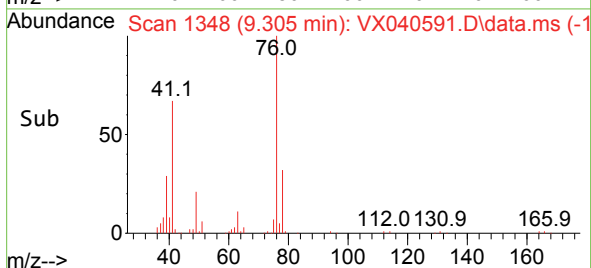
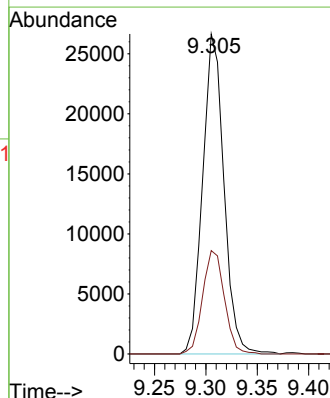
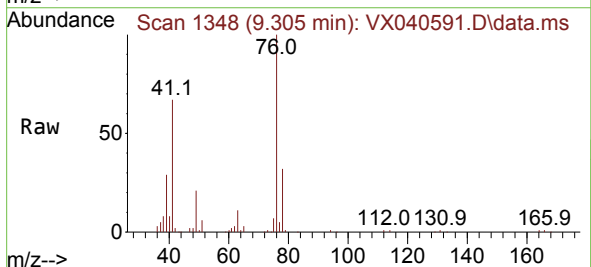
Instrument :
 MSVOA_X
 ClientSampleId :
 VSTDCCC020EC

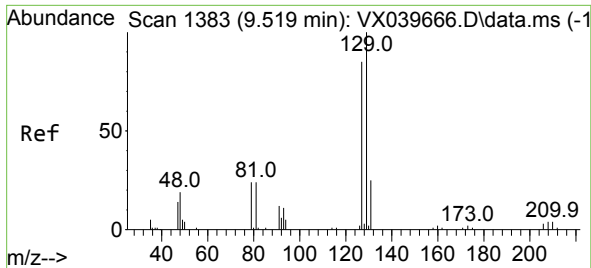
Tgt Ion: 69 Resp: 34462
 Ion Ratio Lower Upper
 69 100
 41 71.8 36.2 108.6
 39 46.1 21.1 63.4



#52
 1,3-Dichloropropane
 Concen: 21.573 ug/l
 RT: 9.305 min Scan# 1348
 Delta R.T. 0.000 min
 Lab File: VX040591.D
 Acq: 05 Mar 2024 16:24

Tgt Ion: 76 Resp: 38404
 Ion Ratio Lower Upper
 76 100
 78 33.0 0.0 65.0

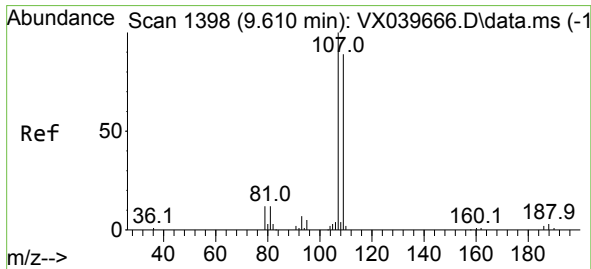
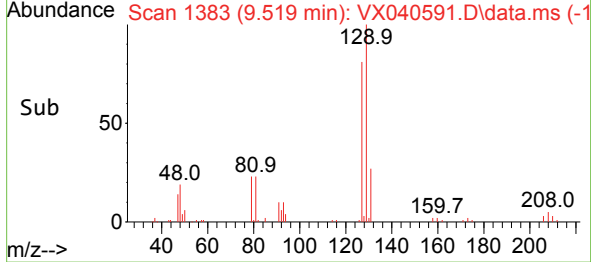
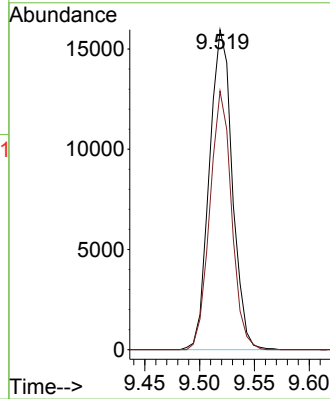
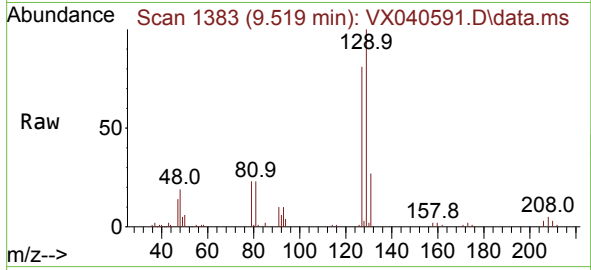




#53
 Dibromochloromethane
 Concen: 19.548 ug/l
 RT: 9.519 min Scan# 1383
 Delta R.T. -0.000 min
 Lab File: VX040591.D
 Acq: 05 Mar 2024 16:24

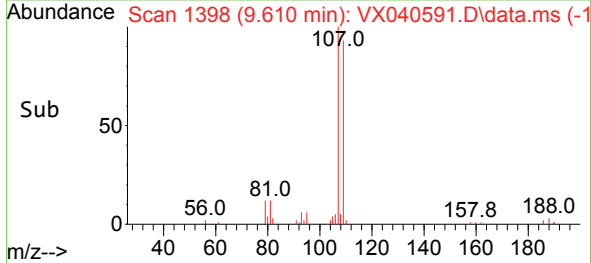
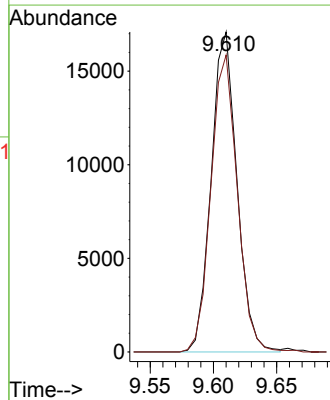
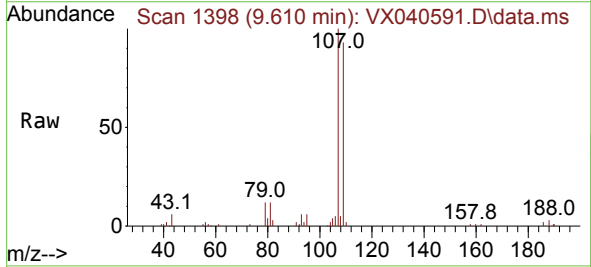
Instrument : MSVOA_X
 ClientSampleId : VSTDCCC020EC

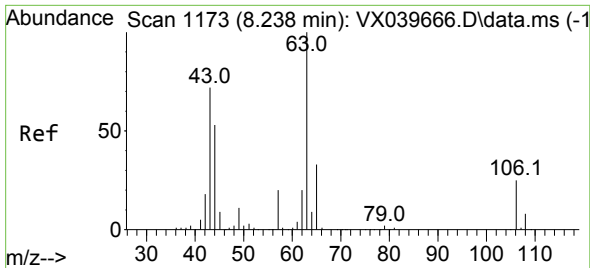
Tgt Ion:129 Resp: 23248
 Ion Ratio Lower Upper
 129 100
 127 76.4 38.3 114.9



#54
 1,2-Dibromoethane
 Concen: 20.993 ug/l
 RT: 9.610 min Scan# 1398
 Delta R.T. 0.000 min
 Lab File: VX040591.D
 Acq: 05 Mar 2024 16:24

Tgt Ion:107 Resp: 24234
 Ion Ratio Lower Upper
 107 100
 109 95.0 75.1 112.7

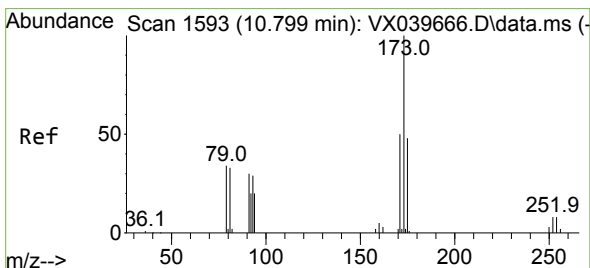
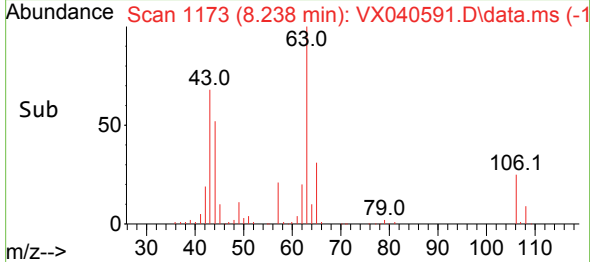
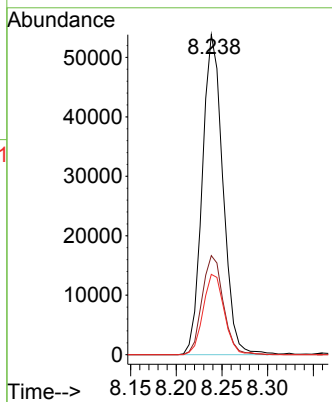
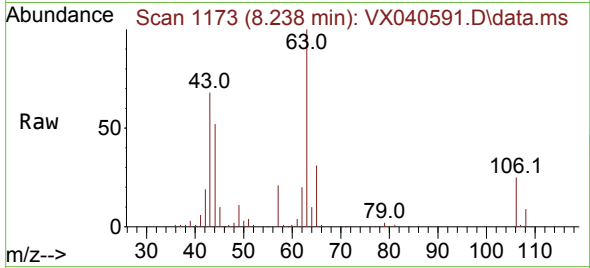




#55
 2-Chloroethyl vinyl ether
 Concen: 101.030 ug/l
 RT: 8.238 min Scan# 1173
 Delta R.T. 0.000 min
 Lab File: VX040591.D
 Acq: 05 Mar 2024 16:24

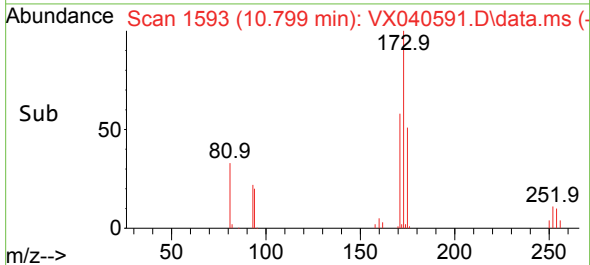
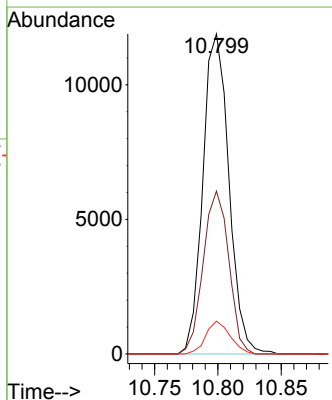
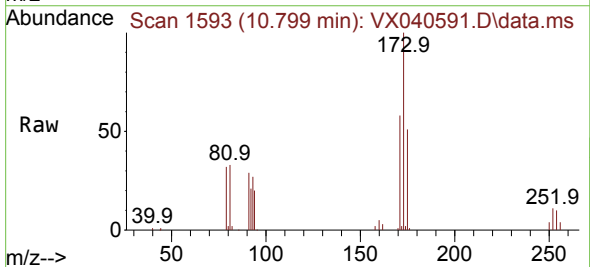
Instrument : MSVOA_X
 ClientSampleId : VSTDCCC020EC

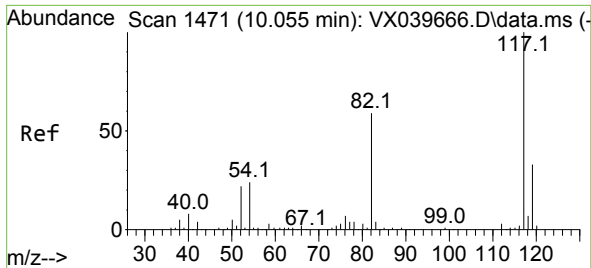
Tgt Ion	Resp	Lower	Upper
63	100		
65	31.6	25.8	38.6
106	25.4	20.6	31.0



#56
 Bromoform
 Concen: 20.210 ug/l
 RT: 10.799 min Scan# 1593
 Delta R.T. -0.000 min
 Lab File: VX040591.D
 Acq: 05 Mar 2024 16:24

Tgt Ion	Resp	Lower	Upper
173	100		
175	50.0	37.6	56.4
254	9.5	5.8	8.8



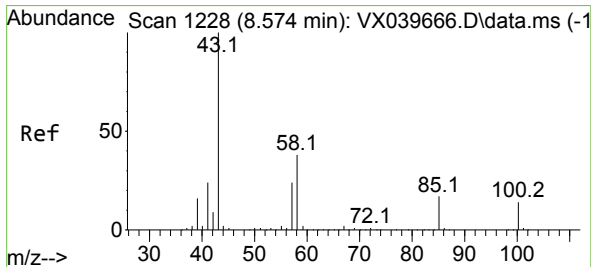
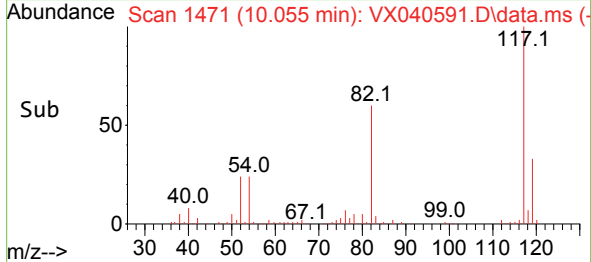
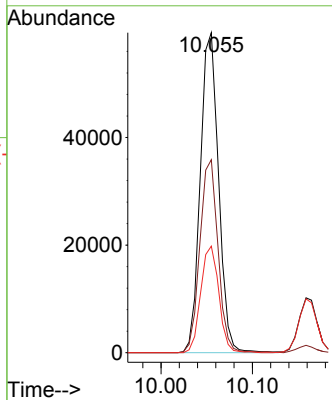
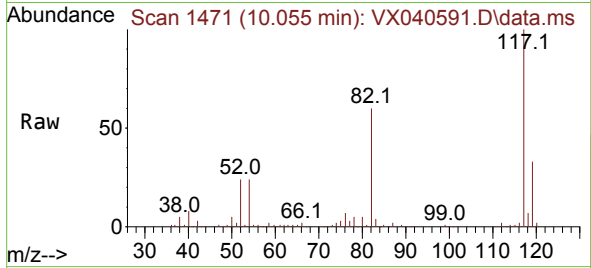


#57
 Chlorobenzene-d5
 Concen: 30.000 ug/l
 RT: 10.055 min Scan# 1471
 Delta R.T. 0.000 min
 Lab File: VX040591.D
 Acq: 05 Mar 2024 16:24

Instrument : MSVOA_X
 ClientSampleId : VSTDCCC020EC

Tgt Ion:117 Resp: 82687

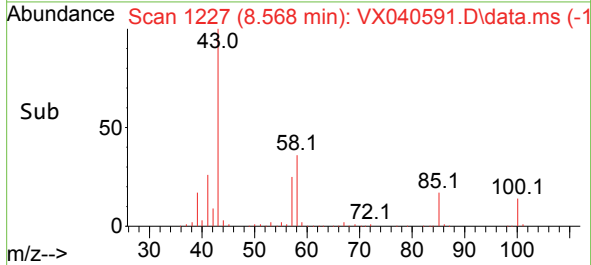
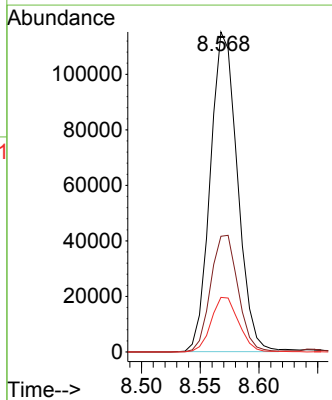
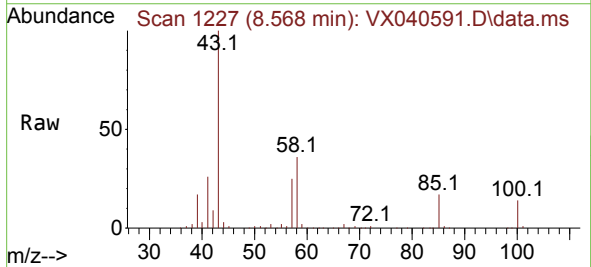
Ion	Ratio	Lower	Upper
117	100		
82	60.0	47.0	70.6
119	33.0	25.2	37.8

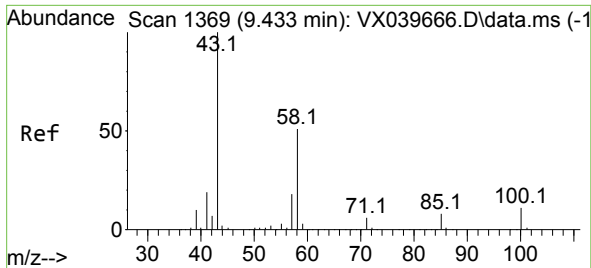


#58
 4-Methyl-2-Pentanone
 Concen: 100.368 ug/l
 RT: 8.568 min Scan# 1227
 Delta R.T. -0.006 min
 Lab File: VX040591.D
 Acq: 05 Mar 2024 16:24

Tgt Ion: 43 Resp: 184800

Ion	Ratio	Lower	Upper
43	100		
58	37.0	30.1	45.1
85	17.5	13.9	20.9



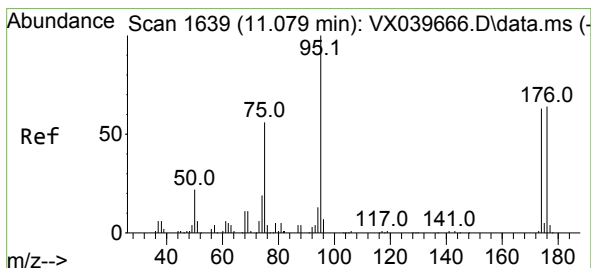
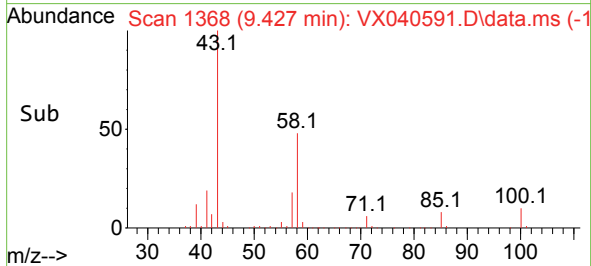
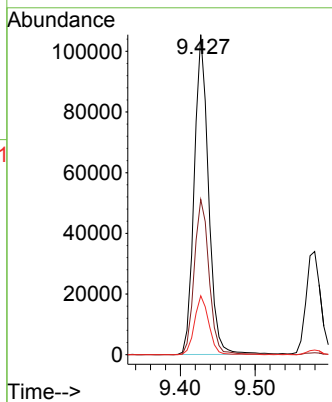
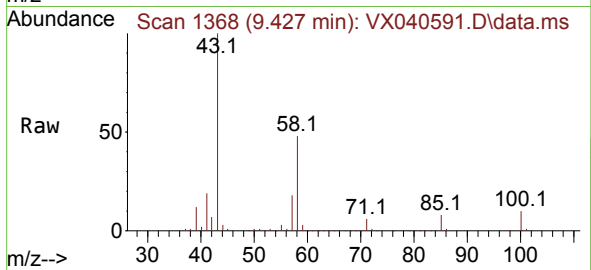


#59
 2-Hexanone
 Concen: 93.888 ug/l
 RT: 9.427 min Scan# 11
 Delta R.T. -0.006 min
 Lab File: VX040591.D
 Acq: 05 Mar 2024 16:24

Instrument : MSVOA_X
 ClientSampleId : VSTDCCC020EC

Tgt Ion: 43 Resp: 139633

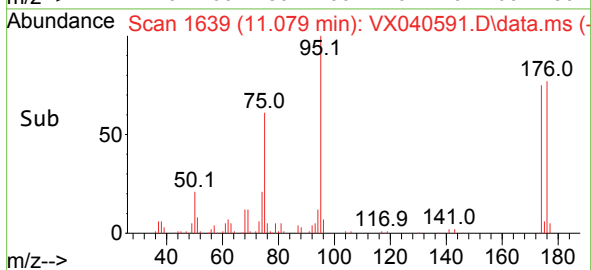
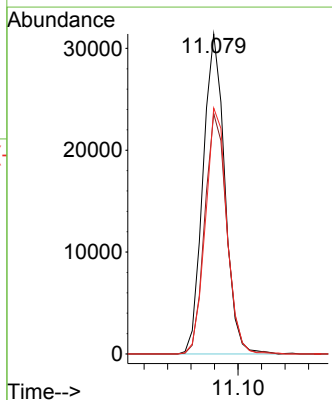
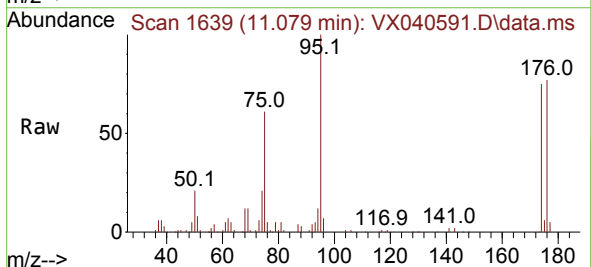
Ion	Ratio	Lower	Upper
43	100		
58	49.4	42.7	64.1
57	18.3	14.8	22.2

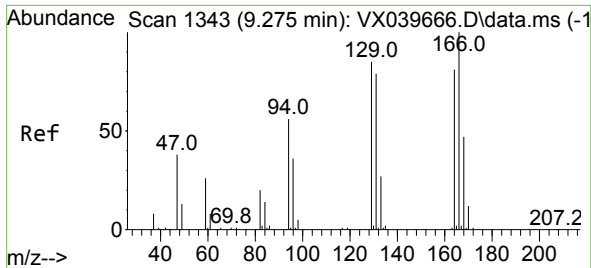


#60
 4-Bromofluorobenzene
 Concen: 28.418 ug/l
 RT: 11.079 min Scan# 1639
 Delta R.T. 0.000 min
 Lab File: VX040591.D
 Acq: 05 Mar 2024 16:24

Tgt Ion: 95 Resp: 40306

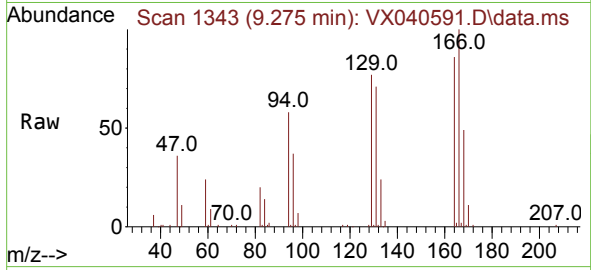
Ion	Ratio	Lower	Upper
95	100		
174	75.8	55.4	83.2
176	76.0	52.6	78.8



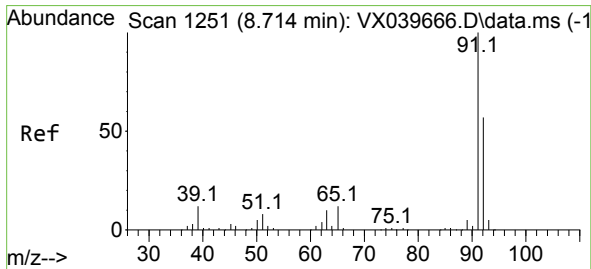
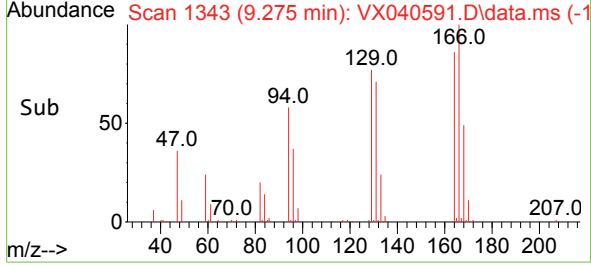
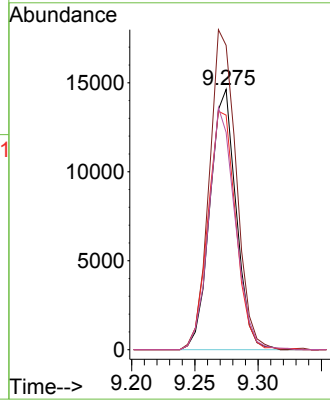


#61
 Tetrachloroethene
 Concen: 21.408 ug/l
 RT: 9.275 min Scan# 111
 Delta R.T. -0.000 min
 Lab File: VX040591.D
 Acq: 05 Mar 2024 16:24

Instrument :
 MSVOA_X
 ClientSampleId :
 VSTDCCC020EC

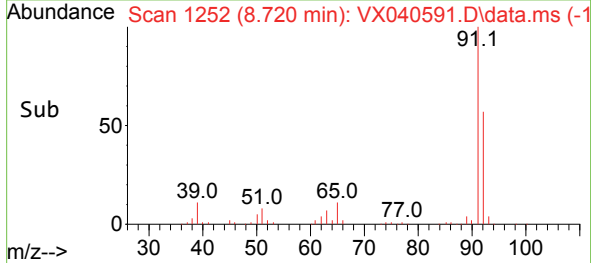
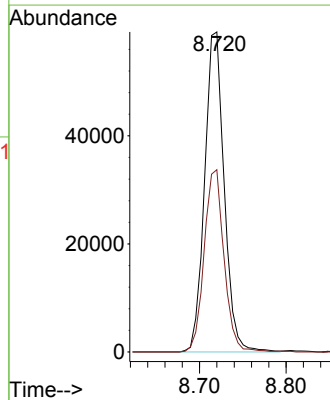
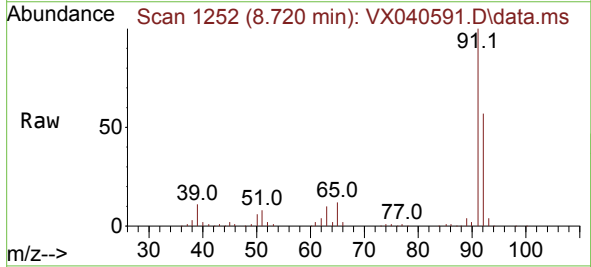


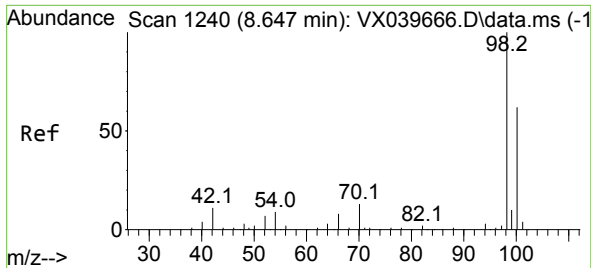
Tgt Ion:164 Resp: 21010
 Ion Ratio Lower Upper
 164 100
 166 116.9 104.0 156.0
 129 90.1 82.0 123.0
 131 83.5 76.4 114.6



#62
 Toluene
 Concen: 20.404 ug/l
 RT: 8.720 min Scan# 1252
 Delta R.T. 0.006 min
 Lab File: VX040591.D
 Acq: 05 Mar 2024 16:24

Tgt Ion: 91 Resp: 92923
 Ion Ratio Lower Upper
 91 100
 92 57.4 45.9 68.9

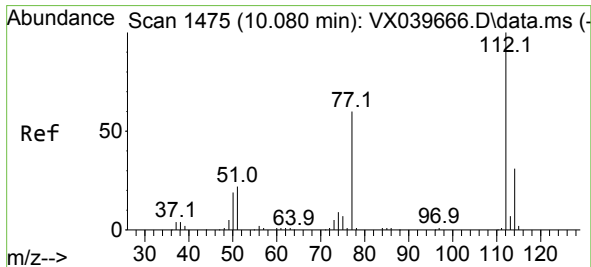
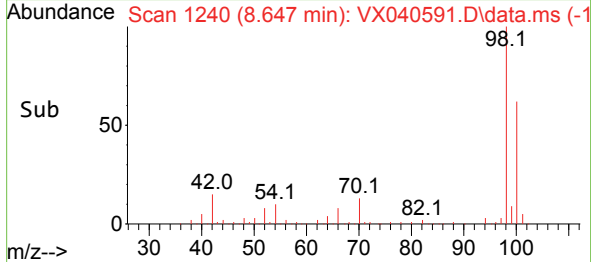
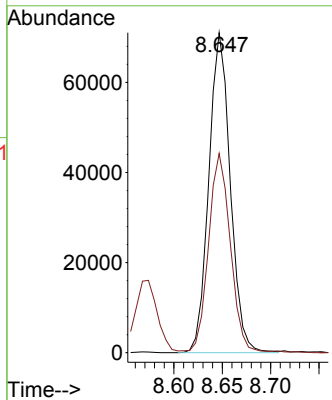
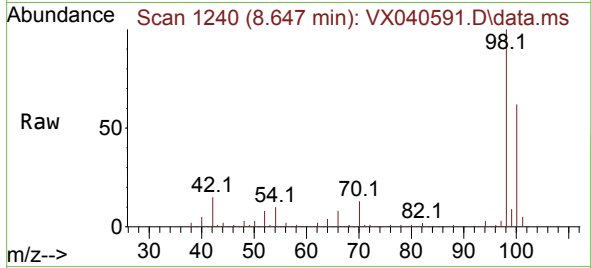




#63
 Toluene-d8
 Concen: 30.003 ug/l
 RT: 8.647 min Scan# 11
 Delta R.T. -0.000 min
 Lab File: VX040591.D
 Acq: 05 Mar 2024 16:24

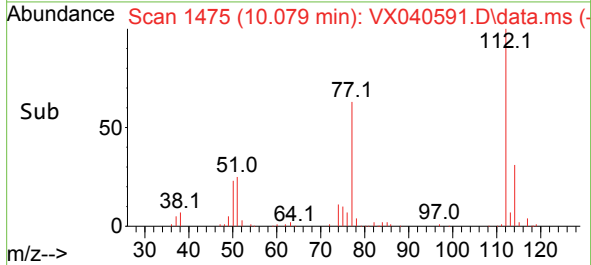
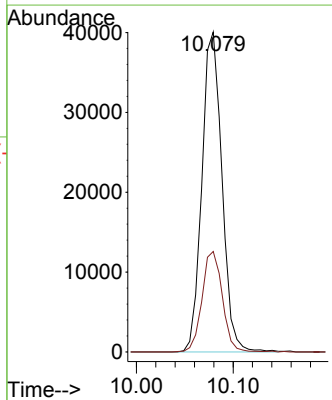
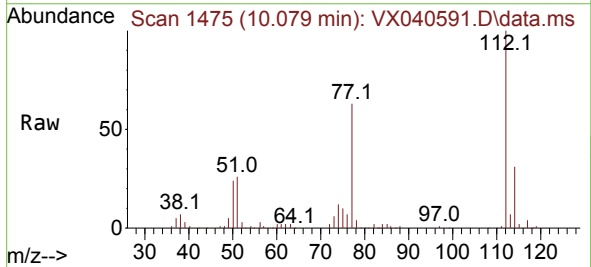
Instrument :
 MSVOA_X
 ClientSampleId :
 VSTDCCC020EC

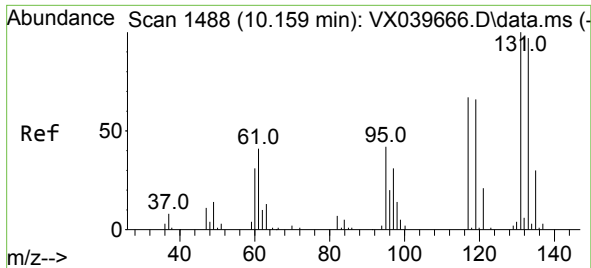
Tgt Ion: 98 Resp: 109637
 Ion Ratio Lower Upper
 98 100
 100 63.2 51.0 76.4



#64
 Chlorobenzene
 Concen: 20.788 ug/l
 RT: 10.079 min Scan# 1475
 Delta R.T. -0.001 min
 Lab File: VX040591.D
 Acq: 05 Mar 2024 16:24

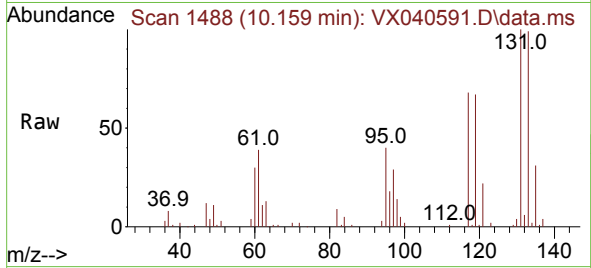
Tgt Ion: 112 Resp: 57861
 Ion Ratio Lower Upper
 112 100
 114 31.4 25.9 38.9



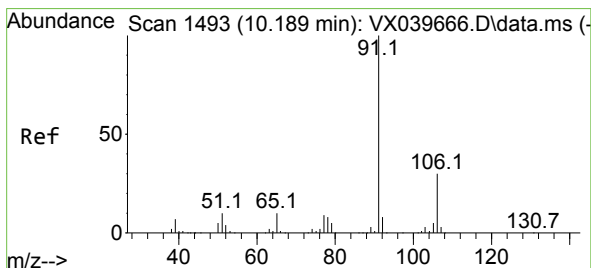
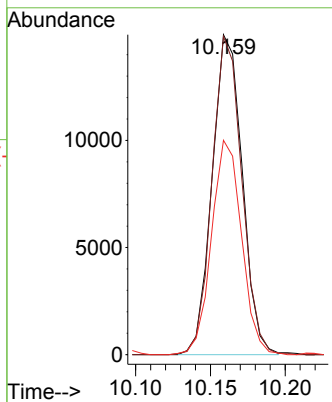
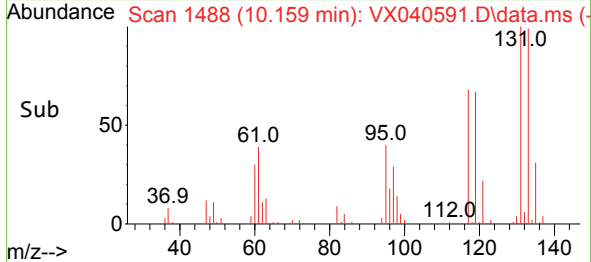


#65
 1,1,1,2-Tetrachloroethane
 Concen: 19.705 ug/l
 RT: 10.159 min Scan# 1494
 Delta R.T. -0.000 min
 Lab File: VX040591.D
 Acq: 05 Mar 2024 16:24

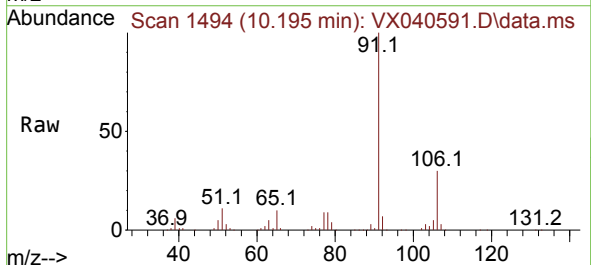
Instrument : MSVOA_X
 ClientSampleId : VSTDCCC020EC



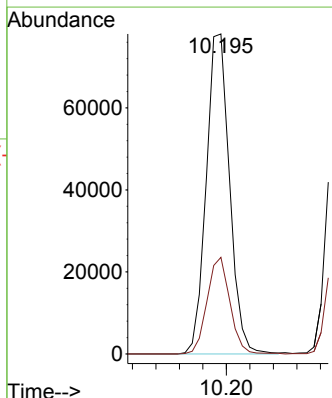
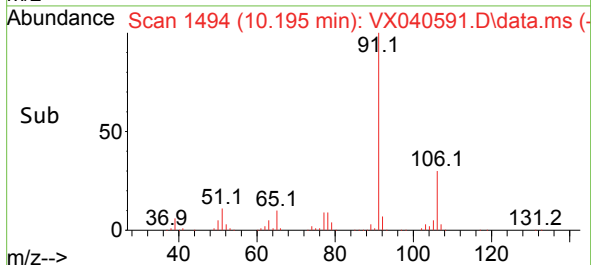
Tgt Ion:131 Resp: 20920
 Ion Ratio Lower Upper
 131 100
 133 98.1 0.0 191.8
 119 66.8 0.0 135.4

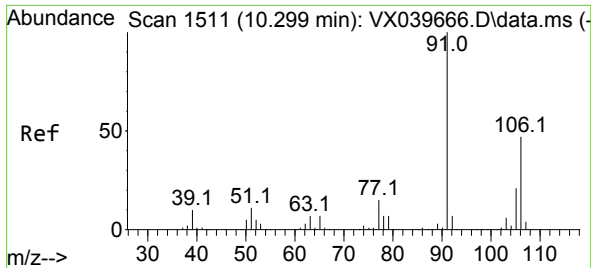


#66
 Ethyl Benzene
 Concen: 20.518 ug/l
 RT: 10.195 min Scan# 1494
 Delta R.T. 0.006 min
 Lab File: VX040591.D
 Acq: 05 Mar 2024 16:24



Tgt Ion: 91 Resp: 107736
 Ion Ratio Lower Upper
 91 100
 106 30.2 24.4 36.6

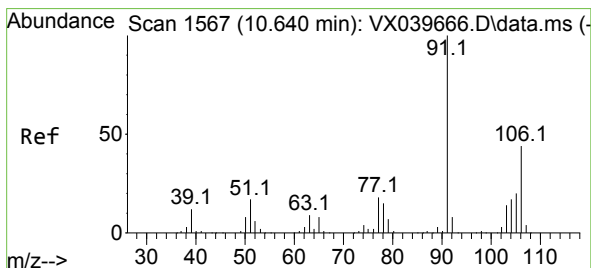
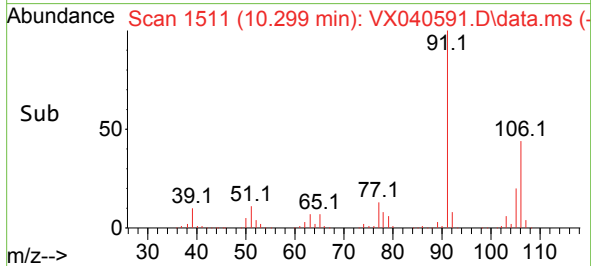
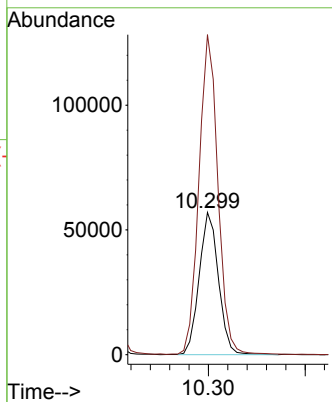
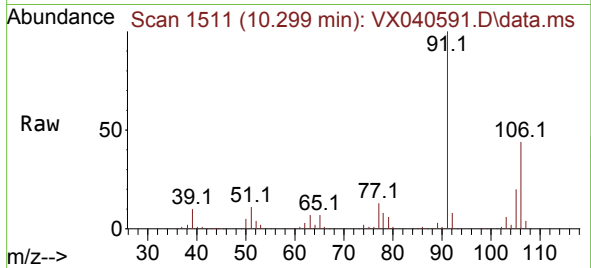




#67
 m/p-Xylenes
 Concen: 40.805 ug/l
 RT: 10.299 min Scan# 1511
 Delta R.T. -0.000 min
 Lab File: VX040591.D
 Acq: 05 Mar 2024 16:24

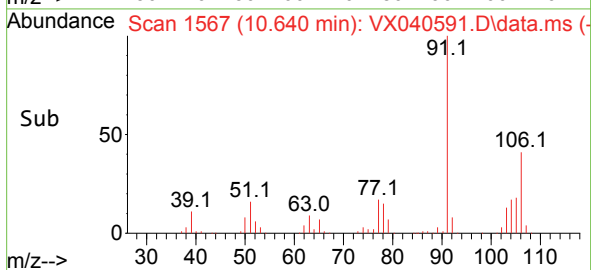
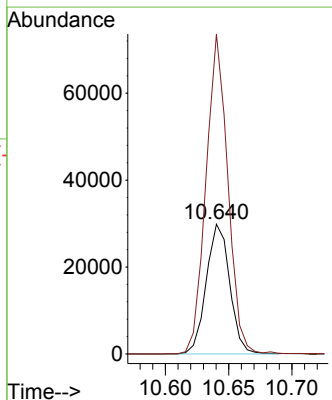
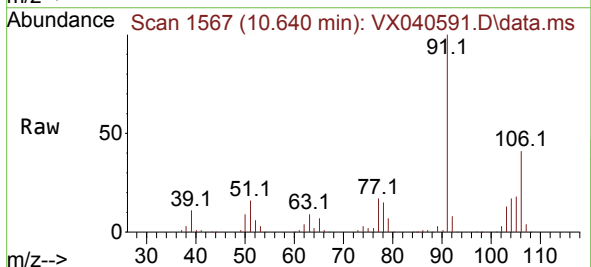
Instrument : MSVOA_X
 ClientSampleId : VSTDCCC020EC

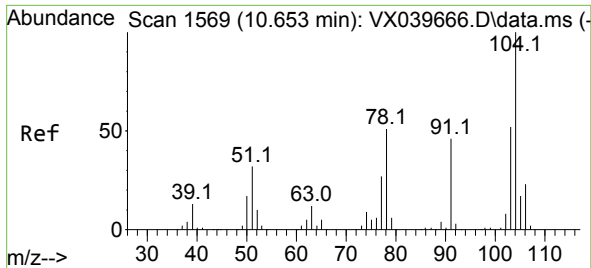
Tgt Ion:106 Resp: 79122
 Ion Ratio Lower Upper
 106 100
 91 221.4 169.4 254.0



#68
 o-Xylene
 Concen: 20.686 ug/l
 RT: 10.640 min Scan# 1567
 Delta R.T. 0.000 min
 Lab File: VX040591.D
 Acq: 05 Mar 2024 16:24

Tgt Ion:106 Resp: 38612
 Ion Ratio Lower Upper
 106 100
 91 227.9 111.2 333.6



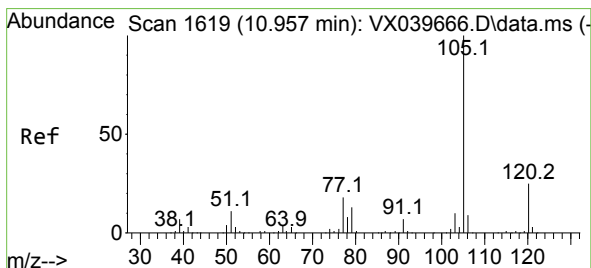
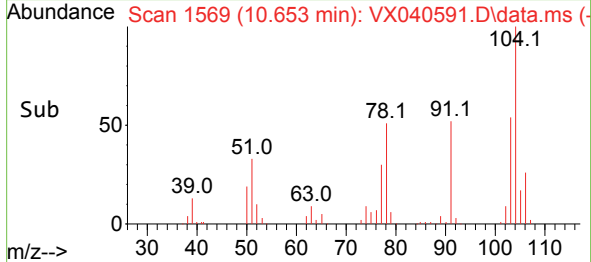
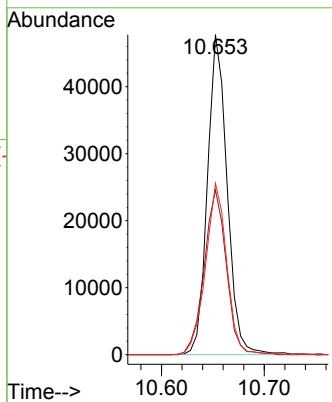
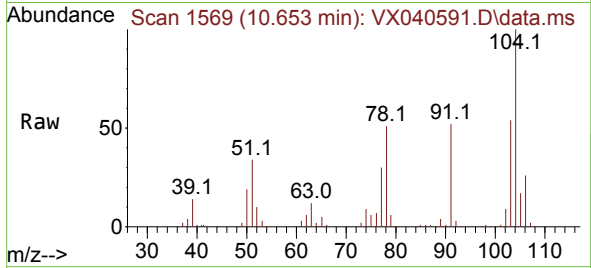


#69
 Styrene
 Concen: 20.244 ug/l
 RT: 10.653 min Scan# 11
 Delta R.T. -0.000 min
 Lab File: VX040591.D
 Acq: 05 Mar 2024 16:24

Instrument :
 MSVOA_X
 ClientSampleId :
 VSTDCCC020EC

Tgt Ion:104 Resp: 63488

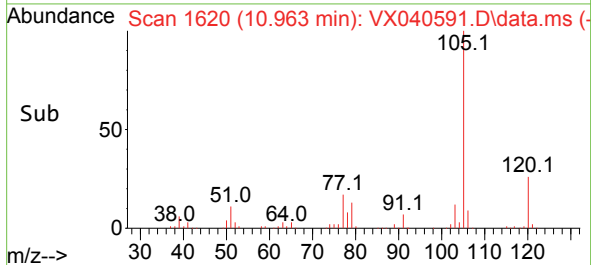
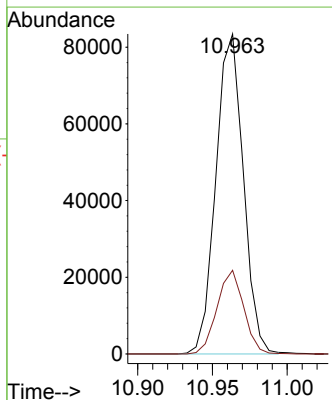
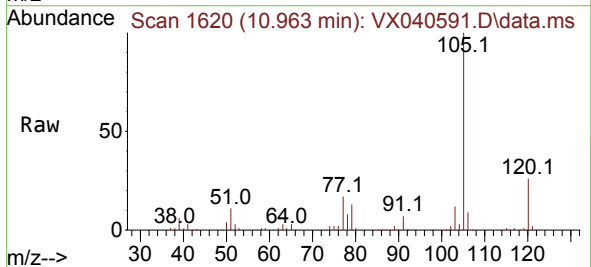
Ion	Ratio	Lower	Upper
104	100		
78	57.9	43.7	65.5
103	58.0	44.6	67.0

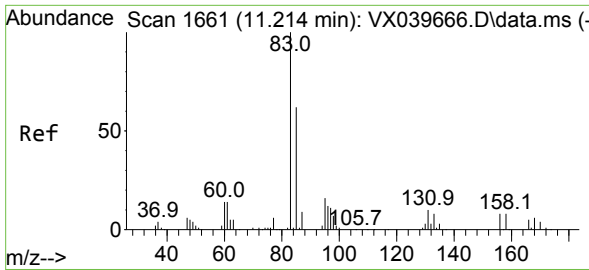


#70
 Isopropylbenzene
 Concen: 21.143 ug/l
 RT: 10.963 min Scan# 1620
 Delta R.T. 0.006 min
 Lab File: VX040591.D
 Acq: 05 Mar 2024 16:24

Tgt Ion:105 Resp: 106640

Ion	Ratio	Lower	Upper
105	100		
120	25.3	18.5	34.3



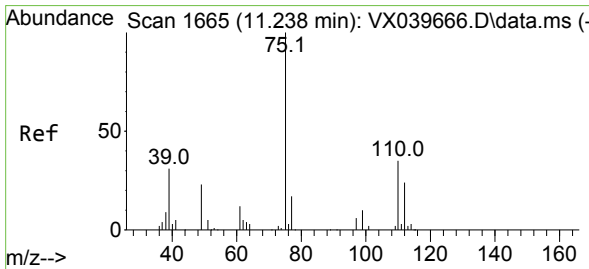
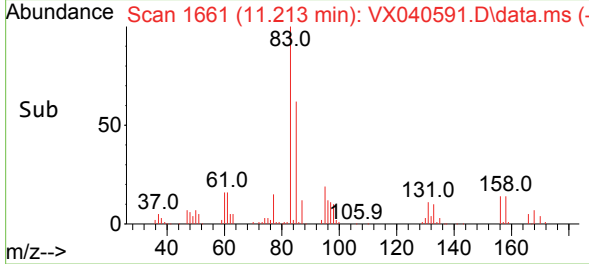
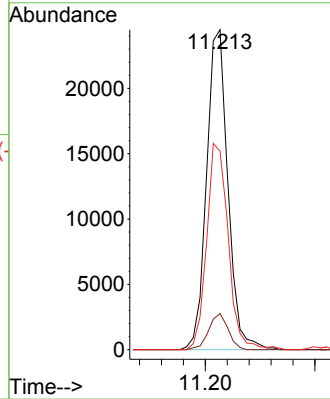
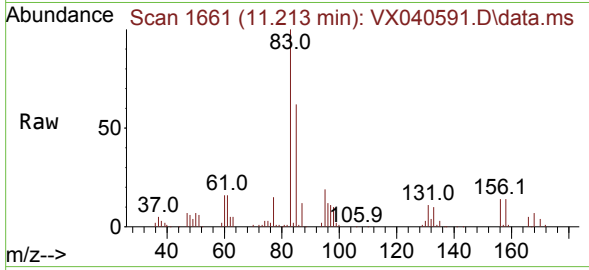


#71
 1,1,2,2-Tetrachloroethane
 Concen: 18.697 ug/l
 RT: 11.213 min Scan# 1661
 Delta R.T. -0.001 min
 Lab File: VX040591.D
 Acq: 05 Mar 2024 16:24

Instrument : MSVOA_X
 ClientSampleId : VSTDCCC020EC

Tgt Ion: 83 Resp: 33060

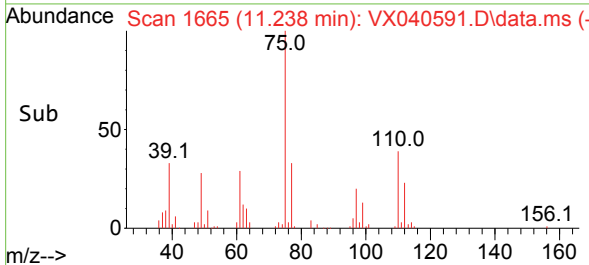
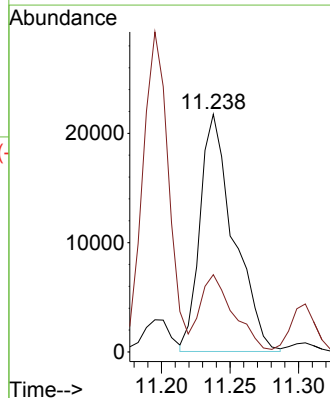
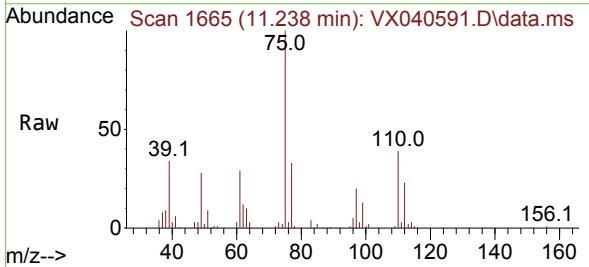
Ion	Ratio	Lower	Upper
83	100		
131	10.3	4.6	13.8
85	64.8	32.5	97.4

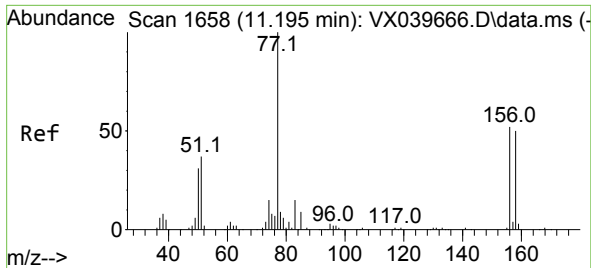


#72
 1,2,3-Trichloropropane
 Concen: 23.356 ug/l
 RT: 11.238 min Scan# 1665
 Delta R.T. -0.000 min
 Lab File: VX040591.D
 Acq: 05 Mar 2024 16:24

Tgt Ion: 75 Resp: 37158

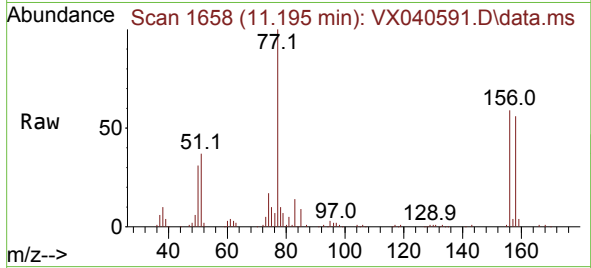
Ion	Ratio	Lower	Upper
75	100		
77	32.4	0.0	76.4



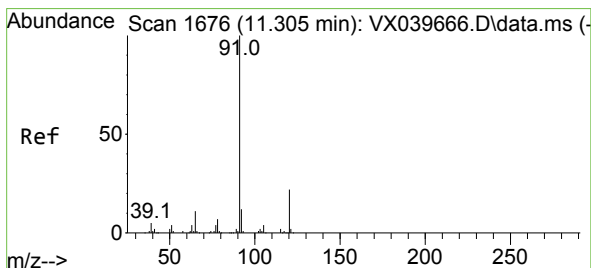
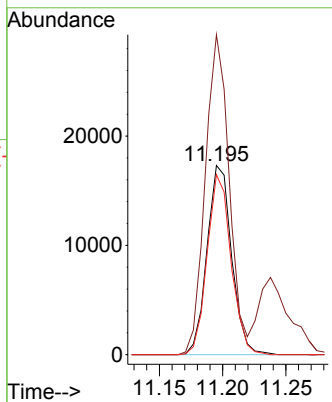
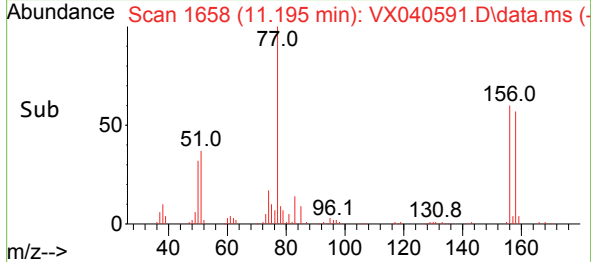


#73
 Bromobenzene
 Concen: 19.623 ug/l
 RT: 11.195 min Scan# 1658
 Delta R.T. 0.000 min
 Lab File: VX040591.D
 Acq: 05 Mar 2024 16:24

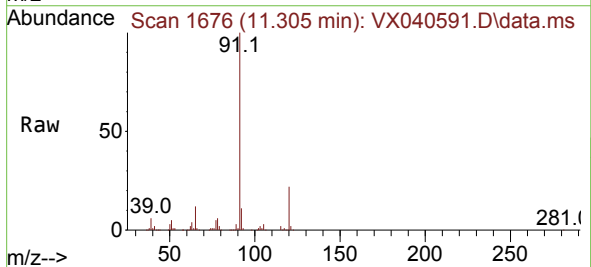
Instrument :
 MSVOA_X
 ClientSampleId :
 VSTDCCC020EC



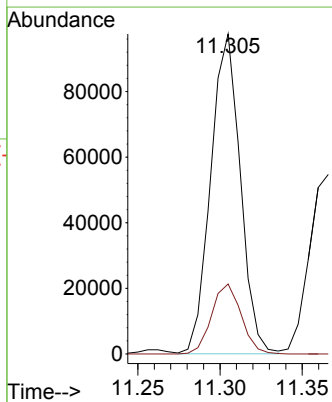
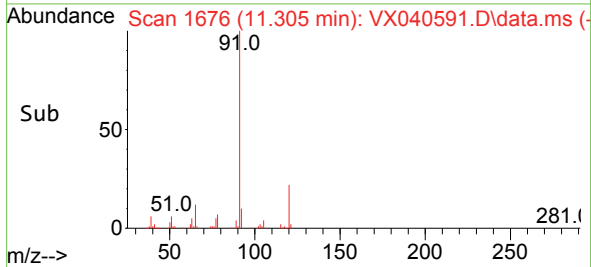
Tgt Ion:156 Resp: 23430
 Ion Ratio Lower Upper
 156 100
 77 164.0 0.0 363.2
 158 92.2 0.0 197.8

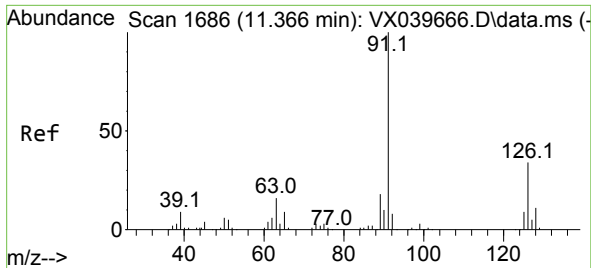


#74
 n-propylbenzene
 Concen: 19.613 ug/l
 RT: 11.305 min Scan# 1676
 Delta R.T. -0.000 min
 Lab File: VX040591.D
 Acq: 05 Mar 2024 16:24



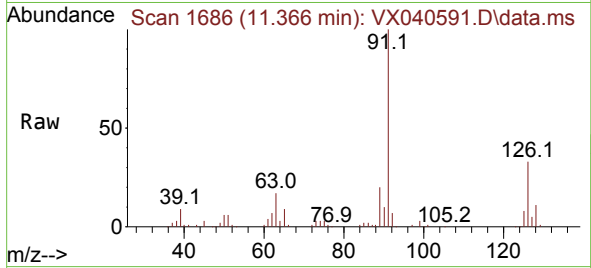
Tgt Ion: 91 Resp: 122178
 Ion Ratio Lower Upper
 91 100
 120 21.8 0.0 43.4



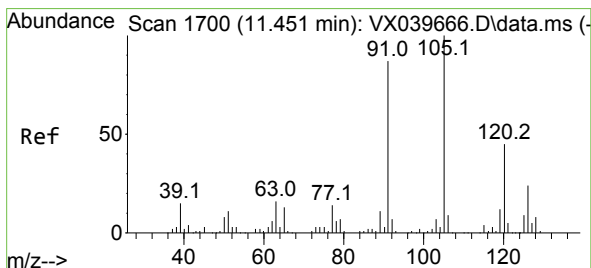
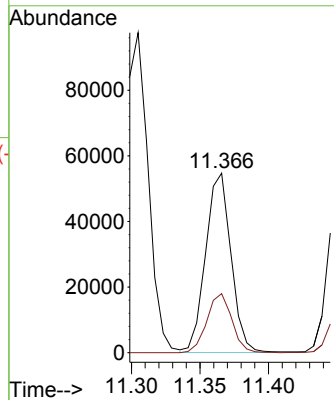
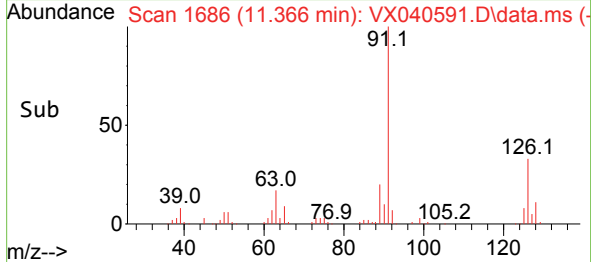


#75
 2-Chlorotoluene
 Concen: 19.099 ug/l
 RT: 11.366 min Scan# 1686
 Delta R.T. -0.000 min
 Lab File: VX040591.D
 Acq: 05 Mar 2024 16:24

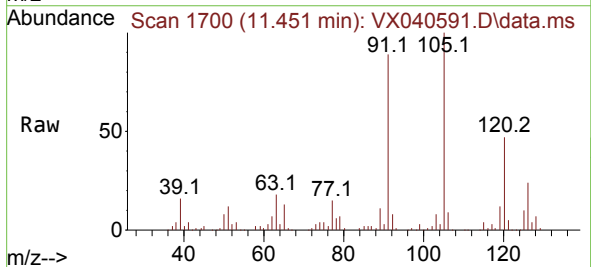
Instrument : MSVOA_X
 ClientSampleId : VSTDCCC020EC



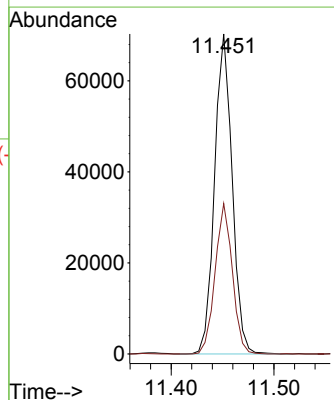
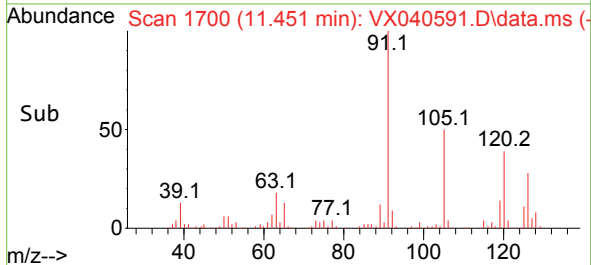
Tgt Ion: 91 Resp: 70604
 Ion Ratio Lower Upper
 91 100
 126 32.4 0.0 64.2

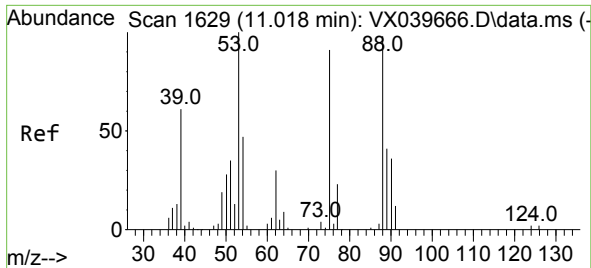


#76
 1,3,5-Trimethylbenzene
 Concen: 18.805 ug/l
 RT: 11.451 min Scan# 1700
 Delta R.T. 0.000 min
 Lab File: VX040591.D
 Acq: 05 Mar 2024 16:24



Tgt Ion: 105 Resp: 83503
 Ion Ratio Lower Upper
 105 100
 120 46.0 0.0 92.6



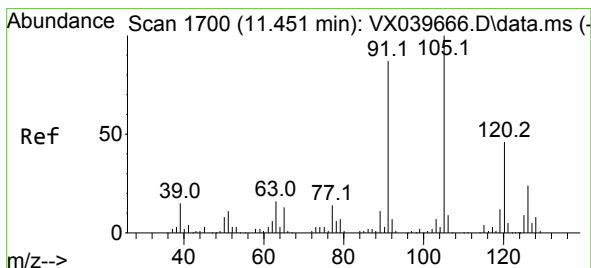
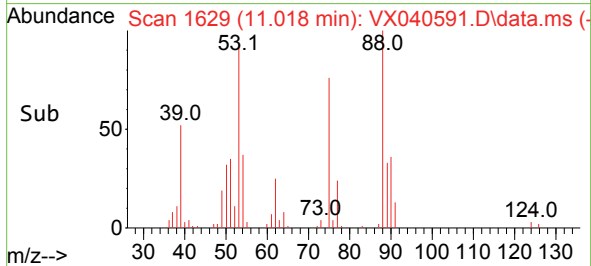
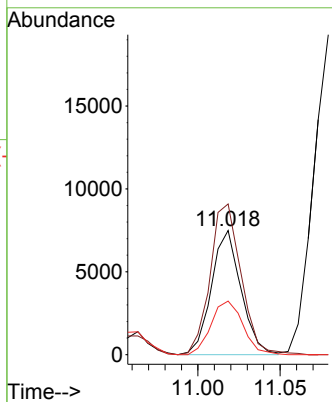
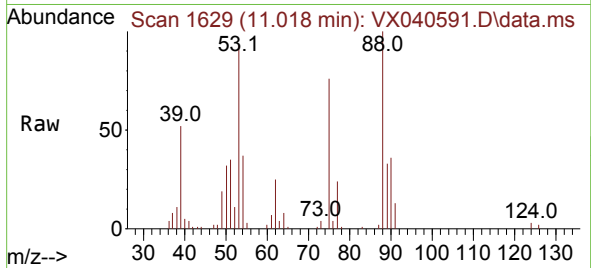


#77
 t-1,4-Dichloro-2-butene
 Concen: 19.012 ug/l
 RT: 11.018 min Scan# 1629
 Delta R.T. 0.000 min
 Lab File: VX040591.D
 Acq: 05 Mar 2024 16:24

Instrument : MSVOA_X
 ClientSampleId : VSTDCCC020EC

Tgt Ion: 75 Resp: 9400

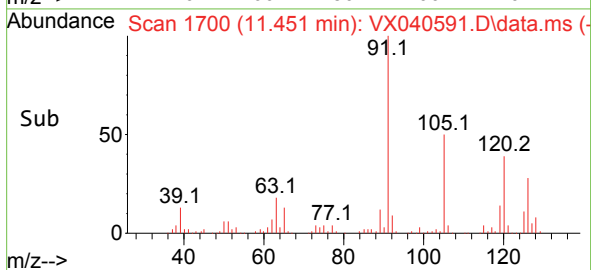
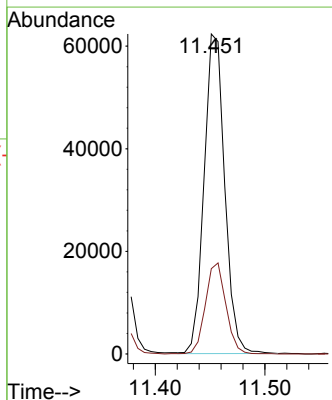
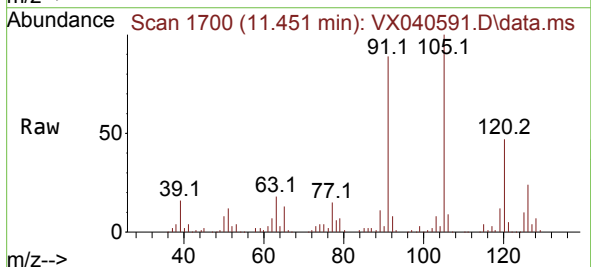
Ion	Ratio	Lower	Upper
75	100		
53	121.4	46.9	140.8
89	43.1	21.3	63.7

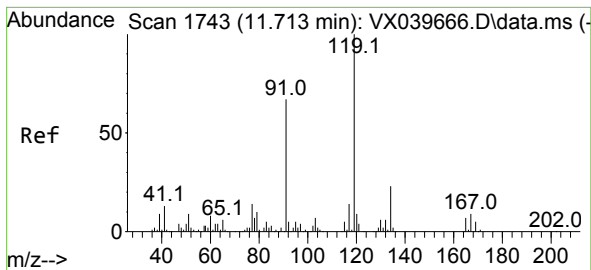


#78
 4-Chlorotoluene
 Concen: 18.450 ug/l
 RT: 11.451 min Scan# 1700
 Delta R.T. 0.000 min
 Lab File: VX040591.D
 Acq: 05 Mar 2024 16:24

Tgt Ion: 91 Resp: 81360

Ion	Ratio	Lower	Upper
91	100		
126	28.3	0.0	57.4



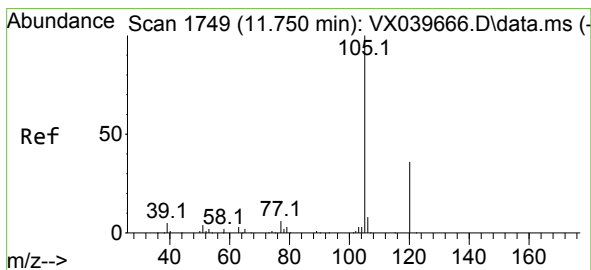
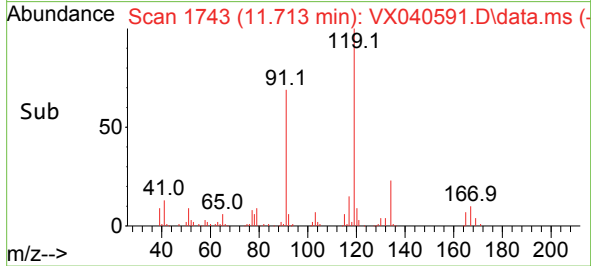
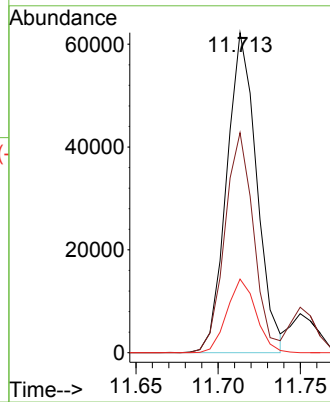
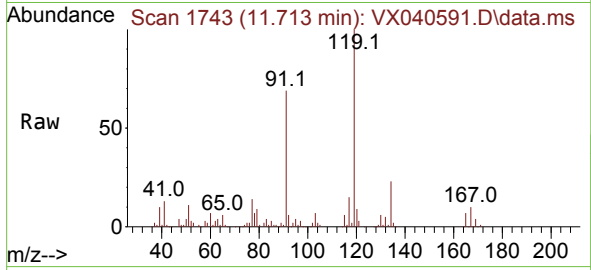


#79
 tert-butylbenzene
 Concen: 19.094 ug/l
 RT: 11.713 min Scan# 1743
 Delta R.T. 0.000 min
 Lab File: VX040591.D
 Acq: 05 Mar 2024 16:24

Instrument :
 MSVOA_X
 ClientSampleId :
 VSTDCCC020EC

Tgt Ion:119 Resp: 79134

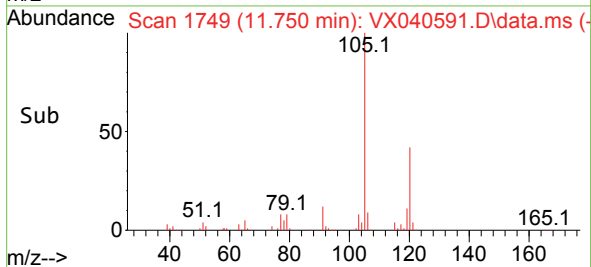
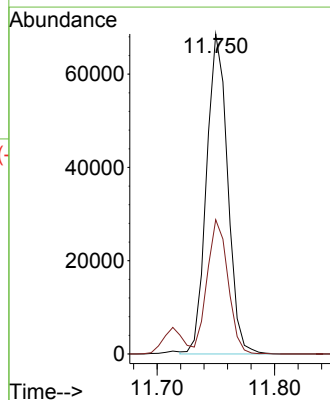
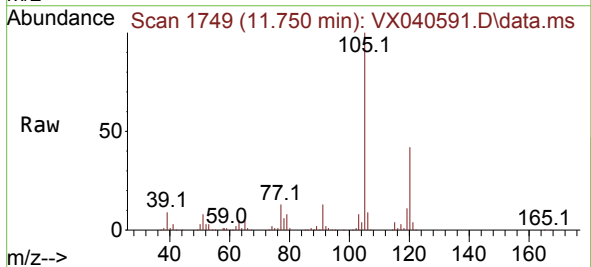
Ion	Ratio	Lower	Upper
119	100		
91	66.3	0.0	125.6
134	22.2	0.0	43.8

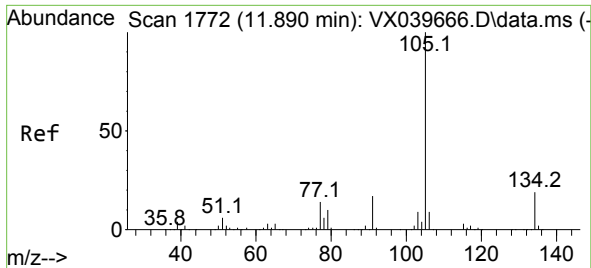


#80
 1,2,4-Trimethylbenzene
 Concen: 19.553 ug/l
 RT: 11.750 min Scan# 1749
 Delta R.T. -0.000 min
 Lab File: VX040591.D
 Acq: 05 Mar 2024 16:24

Tgt Ion:105 Resp: 85544

Ion	Ratio	Lower	Upper
105	100		
120	41.4	0.0	86.4

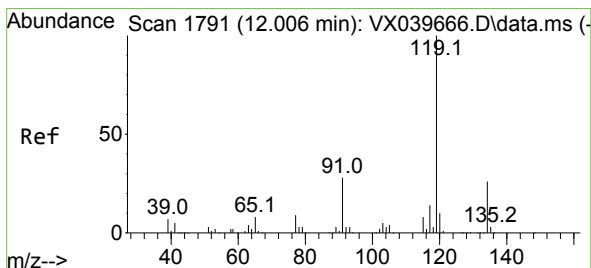
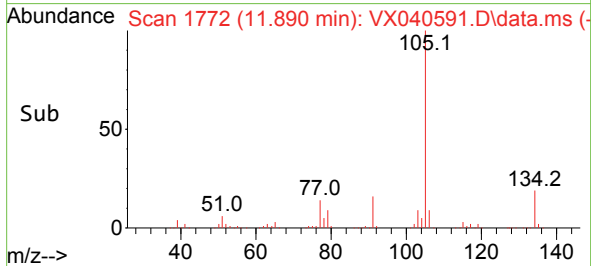
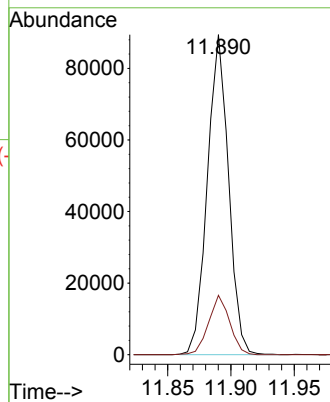
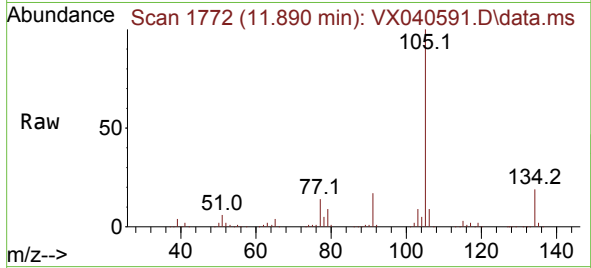




#81
 sec-Butylbenzene
 Concen: 19.021 ug/l
 RT: 11.890 min Scan# 1772
 Delta R.T. 0.000 min
 Lab File: VX040591.D
 Acq: 05 Mar 2024 16:24

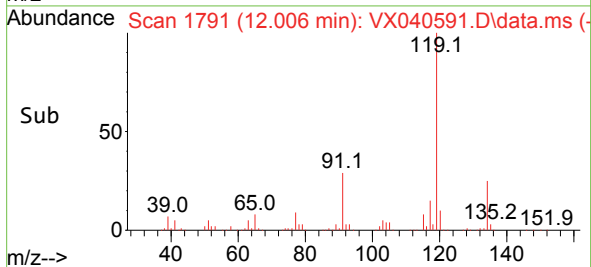
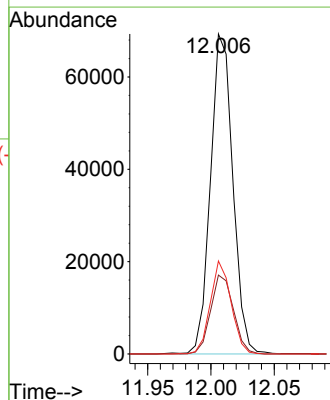
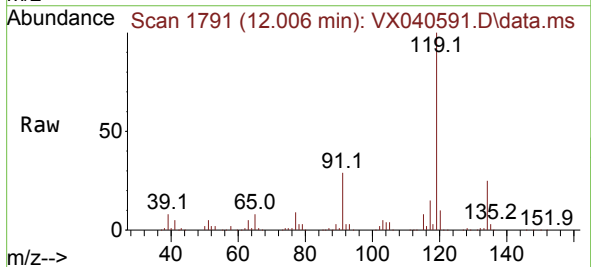
Instrument : MSVOA_X
 ClientSampleId : VSTDCCC020EC

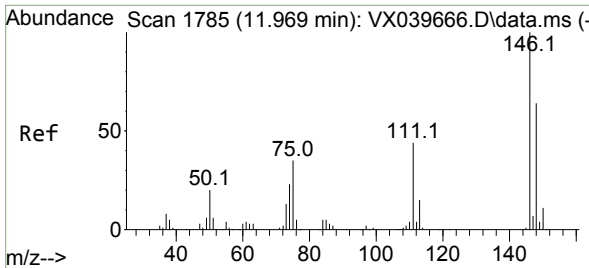
Tgt Ion:105 Resp: 104084
 Ion Ratio Lower Upper
 105 100
 134 18.5 0.0 38.4



#82
 p-Isopropyltoluene
 Concen: 19.012 ug/l
 RT: 12.006 min Scan# 1791
 Delta R.T. -0.000 min
 Lab File: VX040591.D
 Acq: 05 Mar 2024 16:24

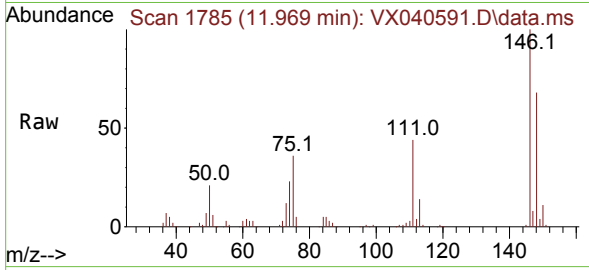
Tgt Ion:119 Resp: 85154
 Ion Ratio Lower Upper
 119 100
 134 25.2 0.0 52.6
 91 27.0 0.0 54.2



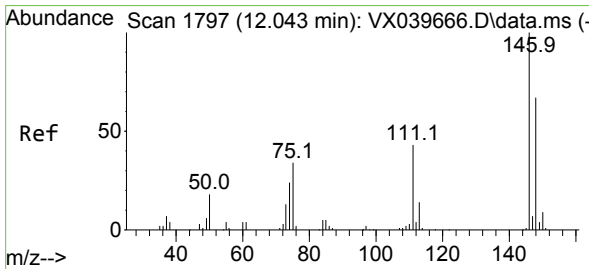
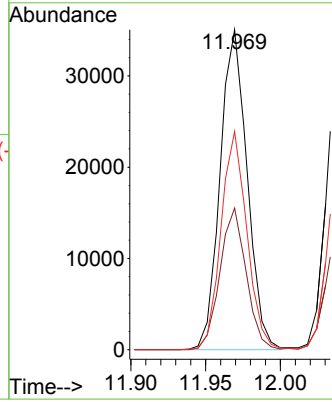
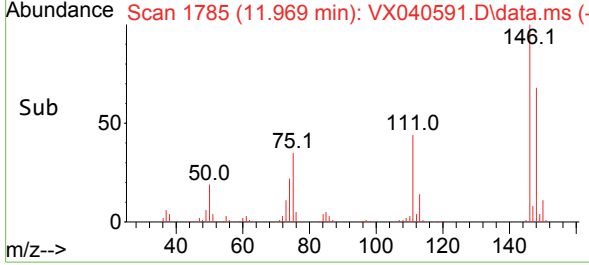


#83
 1,3-Dichlorobenzene
 Concen: 18.969 ug/l
 RT: 11.969 min Scan# 1785
 Delta R.T. 0.000 min
 Lab File: VX040591.D
 Acq: 05 Mar 2024 16:24

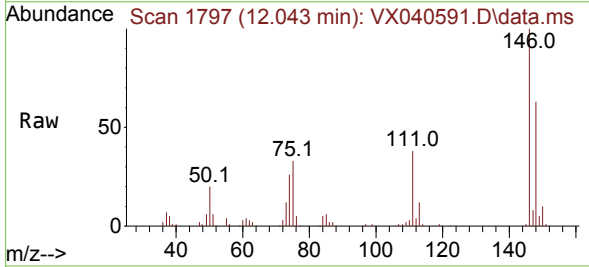
Instrument :
 MSVOA_X
 ClientSampleId :
 VSTDCCC020EC



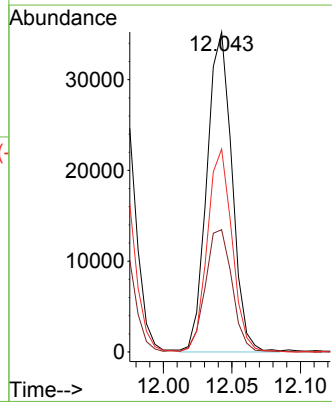
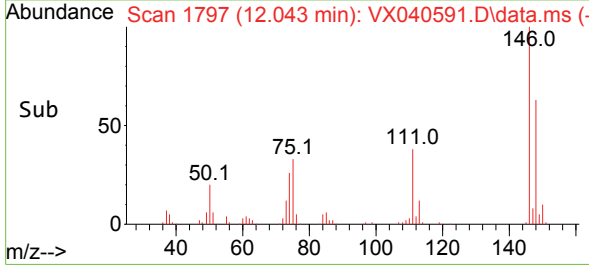
Tgt Ion:146 Resp: 44072
 Ion Ratio Lower Upper
 146 100
 111 43.1 22.3 66.9
 148 64.9 32.8 98.3

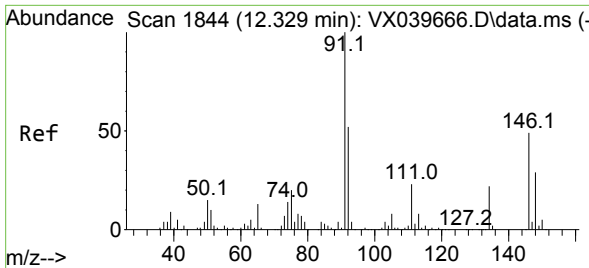


#84
 1,4-Dichlorobenzene
 Concen: 18.919 ug/l
 RT: 12.043 min Scan# 1797
 Delta R.T. -0.000 min
 Lab File: VX040591.D
 Acq: 05 Mar 2024 16:24



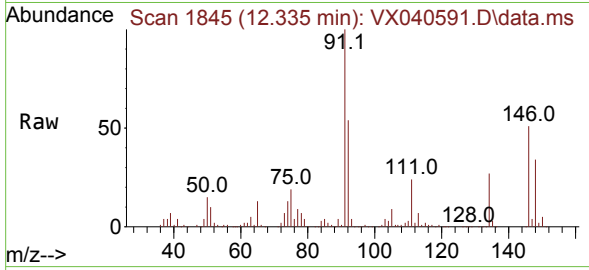
Tgt Ion:146 Resp: 44949
 Ion Ratio Lower Upper
 146 100
 111 40.1 21.4 64.2
 148 62.6 31.8 95.4



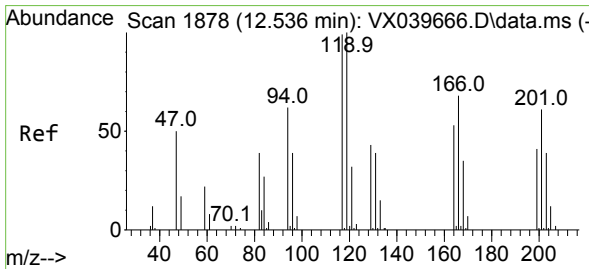
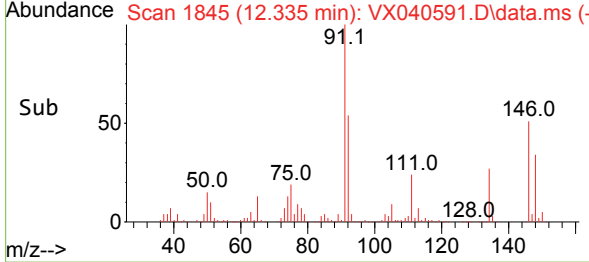
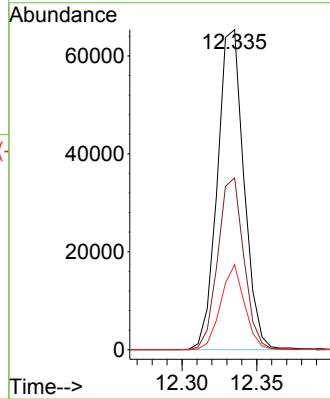


#85
 n-Butylbenzene
 Concen: 18.513 ug/l
 RT: 12.335 min Scan# 1845
 Delta R.T. 0.006 min
 Lab File: VX040591.D
 Acq: 05 Mar 2024 16:24

Instrument : MSVOA_X
 ClientSampleId : VSTDCCC020EC

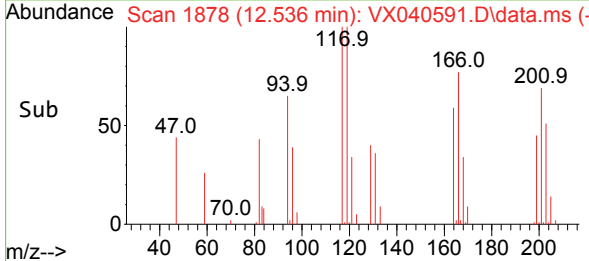
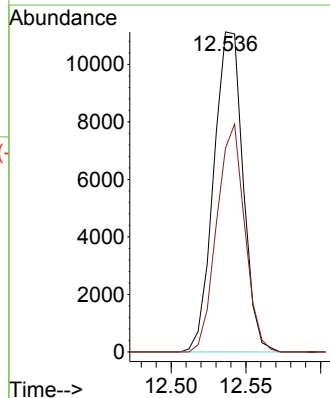
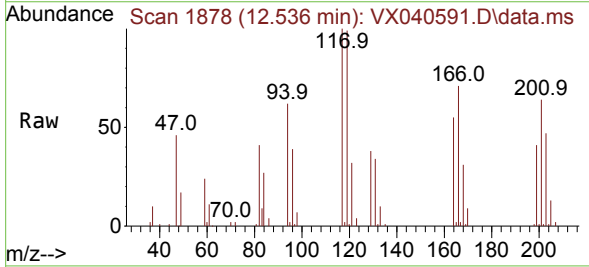


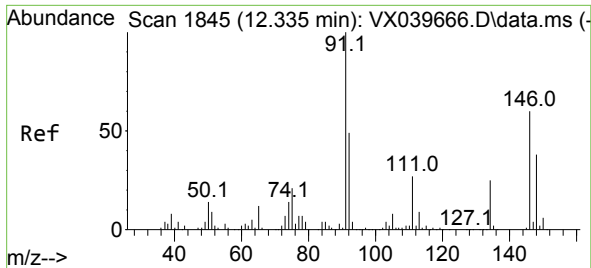
Tgt Ion: 91 Resp: 80686
 Ion Ratio Lower Upper
 91 100
 92 52.7 0.0 106.2
 134 23.9 0.0 48.8



#86
 Hexachloroethane
 Concen: 19.429 ug/l
 RT: 12.536 min Scan# 1878
 Delta R.T. 0.000 min
 Lab File: VX040591.D
 Acq: 05 Mar 2024 16:24

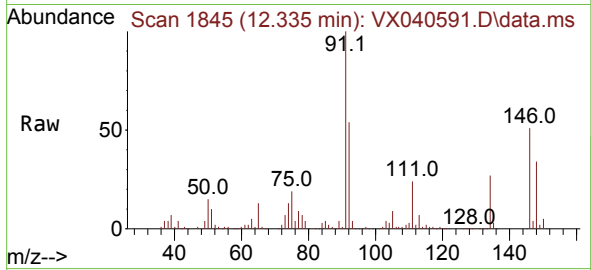
Tgt Ion: 117 Resp: 15184
 Ion Ratio Lower Upper
 117 100
 201 67.8 31.8 95.3



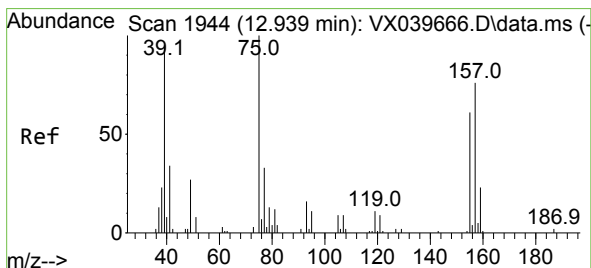
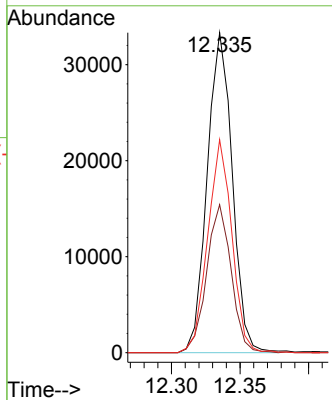
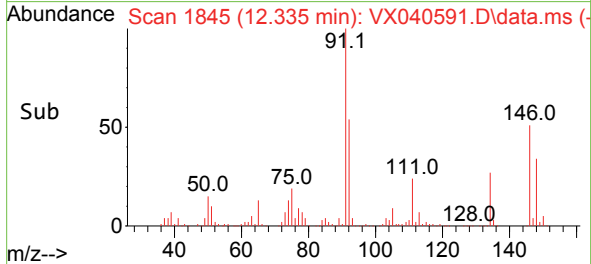


#87
 1,2-Dichlorobenzene
 Concen: 18.755 ug/l
 RT: 12.335 min Scan# 1845
 Delta R.T. 0.000 min
 Lab File: VX040591.D
 Acq: 05 Mar 2024 16:24

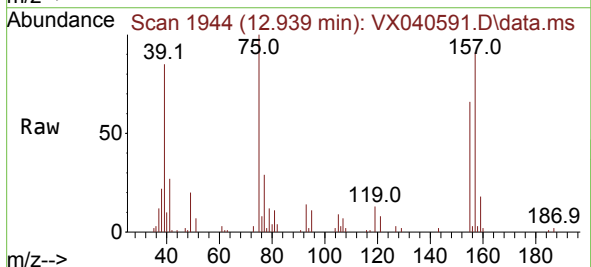
Instrument : MSVOA_X
 ClientSampleId : VSTDCCC020EC



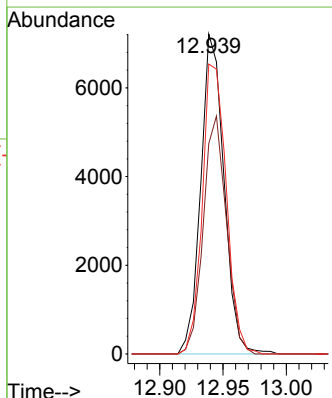
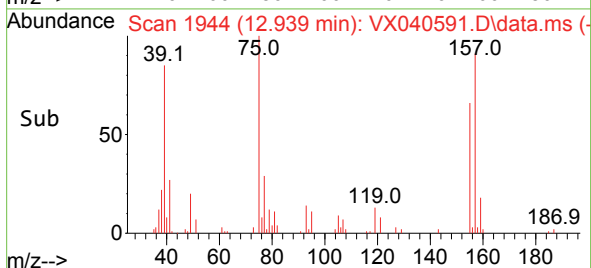
Tgt Ion:146 Resp: 42344
 Ion Ratio Lower Upper
 146 100
 111 45.3 22.4 67.2
 148 64.4 31.9 95.7

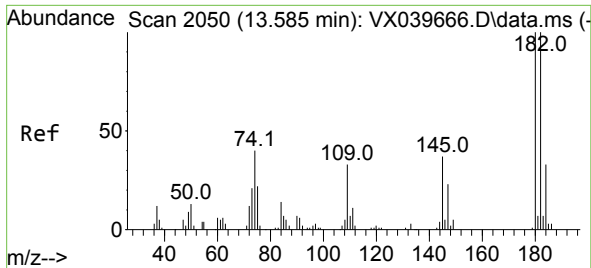


#88
 1,2-Dibromo-3-Chloropropane
 Concen: 19.512 ug/l
 RT: 12.939 min Scan# 1944
 Delta R.T. -0.000 min
 Lab File: VX040591.D
 Acq: 05 Mar 2024 16:24



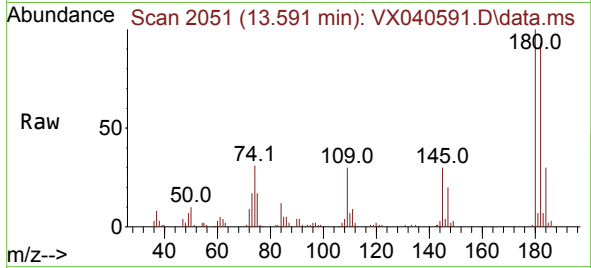
Tgt Ion: 75 Resp: 9225
 Ion Ratio Lower Upper
 75 100
 155 74.1 58.2 87.4
 157 93.5 76.5 114.7



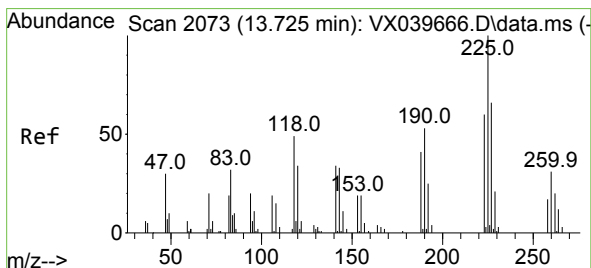
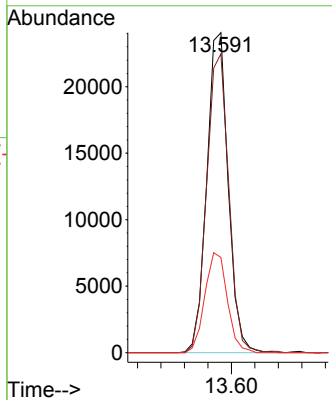
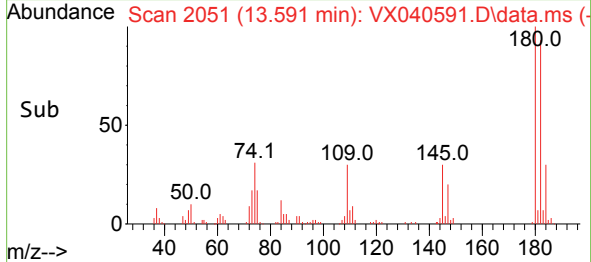


#89
 1,2,4-Trichlorobenzene
 Concen: 20.086 ug/l
 RT: 13.591 min Scan# 2051
 Delta R.T. 0.006 min
 Lab File: VX040591.D
 Acq: 05 Mar 2024 16:24

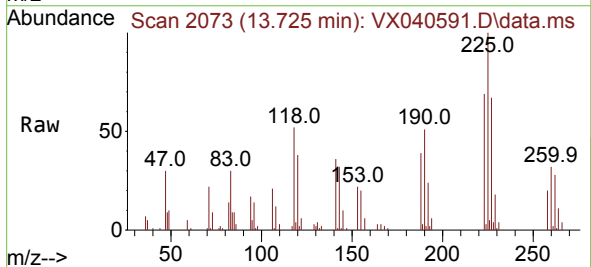
Instrument :
 MSVOA_X
 ClientSampleId :
 VSTDCCC020EC



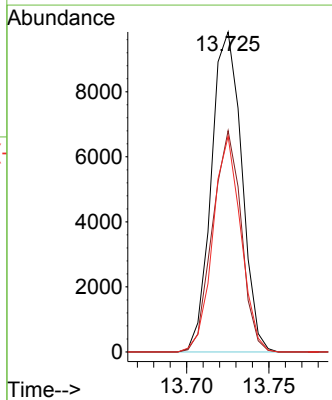
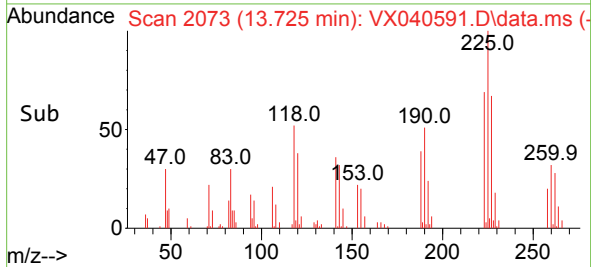
Tgt Ion:180 Resp: 30534
 Ion Ratio Lower Upper
 180 100
 182 95.8 74.5 111.7
 145 32.7 26.6 40.0

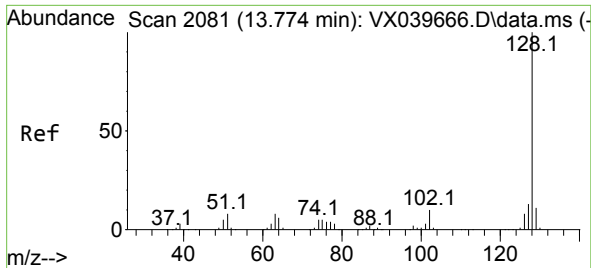


#90
 Hexachlorobutadiene
 Concen: 20.499 ug/l
 RT: 13.725 min Scan# 2073
 Delta R.T. 0.000 min
 Lab File: VX040591.D
 Acq: 05 Mar 2024 16:24



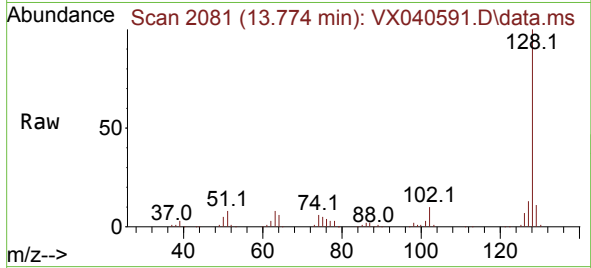
Tgt Ion:225 Resp: 12600
 Ion Ratio Lower Upper
 225 100
 223 65.3 0.0 124.4
 227 62.2 0.0 124.4



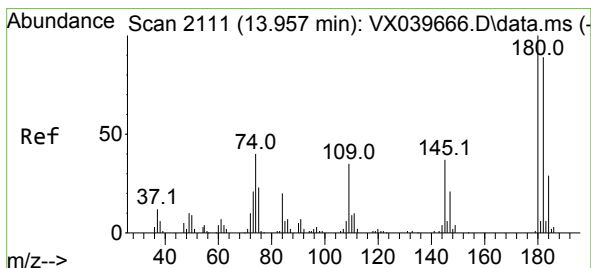
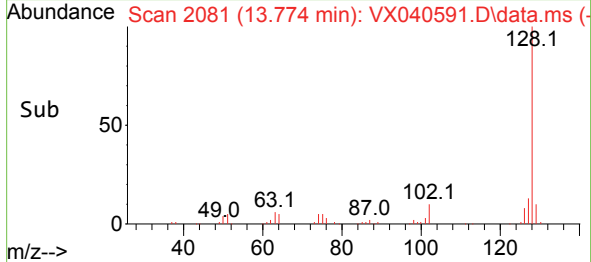
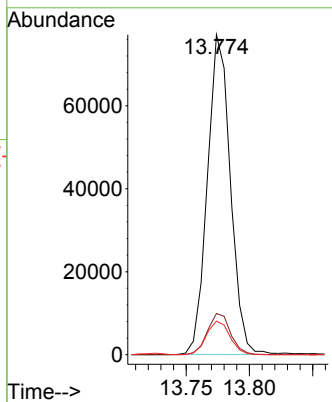


#91
 Naphthalene
 Concen: 19.676 ug/l
 RT: 13.774 min Scan# 2081
 Delta R.T. -0.000 min
 Lab File: VX040591.D
 Acq: 05 Mar 2024 16:24

Instrument : MSVOA_X
 ClientSampleId : VSTDCCC020EC



Tgt Ion:128 Resp: 97568
 Ion Ratio Lower Upper
 128 100
 127 13.0 10.2 15.2
 129 10.7 8.6 12.8



#92
 1,2,3-Trichlorobenzene
 Concen: 20.828 ug/l
 RT: 13.963 min Scan# 2112
 Delta R.T. 0.006 min
 Lab File: VX040591.D
 Acq: 05 Mar 2024 16:24

Tgt Ion:180 Resp: 31220
 Ion Ratio Lower Upper
 180 100
 182 92.1 0.0 191.6
 145 32.8 0.0 69.6

