

Data Path : Z:\voasrv\HPCHEM1\MSVOA_X\Data\VX030525\
 Data File : VX045138.D
 Acq On : 05 Mar 2025 13:36
 Operator : JC/MD
 Sample : Q1478-02DL 2000X
 Misc : 5.0mL/MSVOA_X/WATER
 ALS Vial : 13 Sample Multiplier: 1

Instrument :
 MSVOA_X
 ClientSampleId :
 IDW-AQ-DRUM-610-022825DL

Quant Time: Mar 06 01:05:10 2025
 Quant Method : Z:\voasrv\HPCHEM1\MSVOA_X\Method\82X022825W.M
 Quant Title : SW846 8260
 QLast Update : Fri Feb 28 06:45:16 2025
 Response via : Initial Calibration

Compound	R.T.	QIon	Response	Conc	Units	Dev(Min)

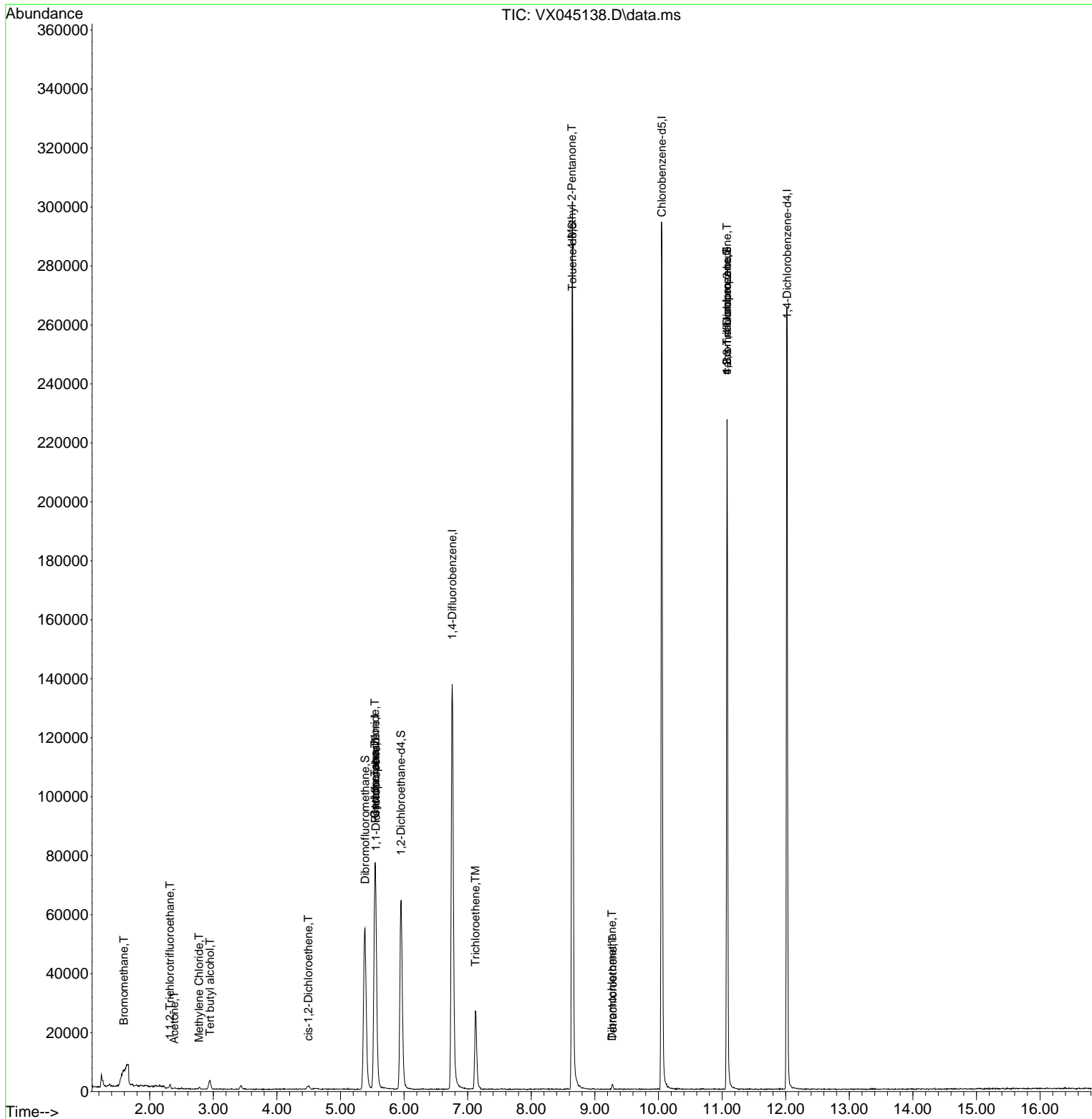
Internal Standards						
1) Pentafluorobenzene	5.550	168	72600	50.000	ug/l	0.00
34) 1,4-Difluorobenzene	6.757	114	144845	50.000	ug/l	0.00
63) Chlorobenzene-d5	10.055	117	130870	50.000	ug/l	0.00
72) 1,4-Dichlorobenzene-d4	12.024	152	53781	50.000	ug/l	0.00
System Monitoring Compounds						
33) 1,2-Dichloroethane-d4	5.952	65	61113	52.920	ug/l	0.00
Spiked Amount	50.000	Range 74 - 125	Recovery	=	105.840%	
35) Dibromofluoromethane	5.385	113	48893	50.481	ug/l	0.00
Spiked Amount	50.000	Range 75 - 124	Recovery	=	100.960%	
50) Toluene-d8	8.647	98	179597	51.148	ug/l	0.00
Spiked Amount	50.000	Range 86 - 113	Recovery	=	102.300%	
62) 4-Bromofluorobenzene	11.079	95	59067	50.765	ug/l	0.00
Spiked Amount	50.000	Range 77 - 121	Recovery	=	101.520%	
Target Compounds						
						Qvalue
5) Bromomethane	1.593	94	129	0.296	ug/l #	58
9) 1,1,2-Trichlorotrifluo...	2.319	101	643	0.762	ug/l	91
11) Tert butyl alcohol	2.947	59	1947	8.901	ug/l #	73
16) Acetone	2.386	43	308	0.575	ug/l #	44
20) Methylene Chloride	2.776	84	259	0.244	ug/l #	65
27) cis-1,2-Dichloroethene	4.495	96	841	0.773	ug/l	95
31) Cyclohexane	5.544	56	2064	1.314	ug/l #	4
36) 1,1-Dichloropropene	5.556	75	6338	4.772	ug/l #	48
38) Carbon Tetrachloride	5.544	117	8005	5.936	ug/l #	15
44) Trichloroethene	7.123	130	10408	10.568	ug/l	94
51) 4-Methyl-2-Pentanone	8.641	43	992	0.584	ug/l #	1
60) Dibromochloromethane	9.269	129	381	0.360	ug/l #	11
64) Tetrachloroethene	9.281	164	439	0.524	ug/l	90
76) 1,2,3-Trichloropropane	11.079	75	31902	25.486	ug/l #	36
81) trans-1,4-Dichloro-2-b...	11.079	75	31902	87.217	ug/l #	6

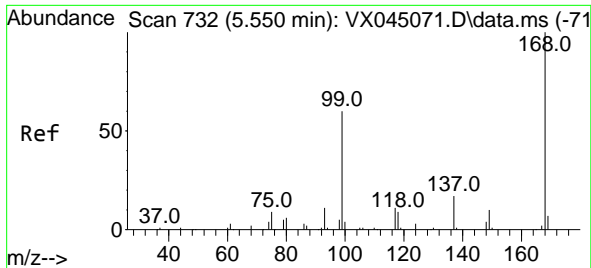
(#) = qualifier out of range (m) = manual integration (+) = signals summed

Data Path : Z:\voasrv\HPCHEM1\MSVOA_X\Data\VX030525\
 Data File : VX045138.D
 Acq On : 05 Mar 2025 13:36
 Operator : JC/MD
 Sample : Q1478-02DL 2000X
 Misc : 5.0mL/MSVOA_X/WATER
 ALS Vial : 13 Sample Multiplier: 1

Instrument :
 MSVOA_X
 ClientSampleId :
 IDW-AQ-DRUM-610-022825DL

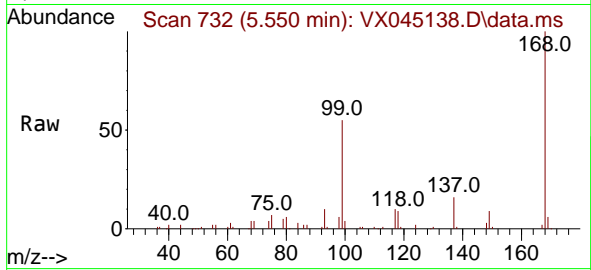
Quant Time: Mar 06 01:05:10 2025
 Quant Method : Z:\voasrv\HPCHEM1\MSVOA_X\Method\82X022825W.M
 Quant Title : SW846 8260
 QLast Update : Fri Feb 28 06:45:16 2025
 Response via : Initial Calibration



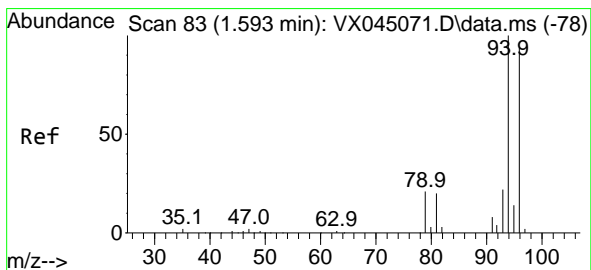
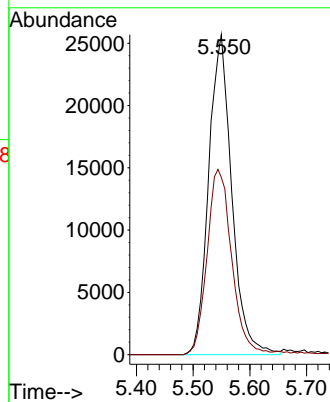
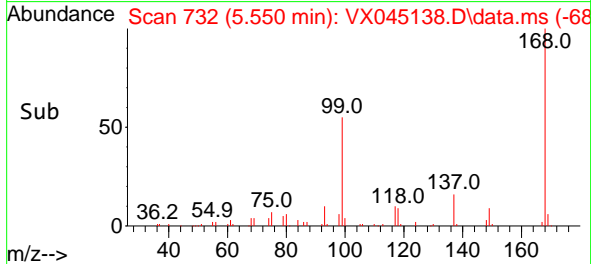


#1
 Pentafluorobenzene
 Concen: 50.000 ug/l
 RT: 5.550 min Scan# 71
 Delta R.T. -0.000 min
 Lab File: VX045138.D
 Acq: 05 Mar 2025 13:36

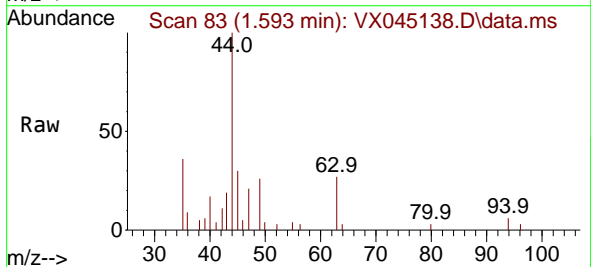
Instrument : MSVOA_X
 ClientSampleId : IDW-AQ-DRUM-610-022825DL



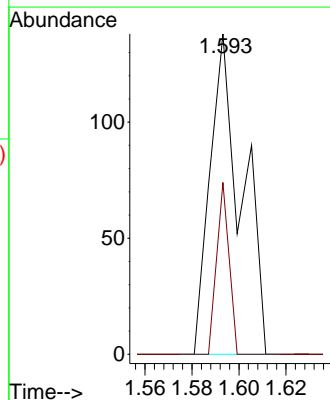
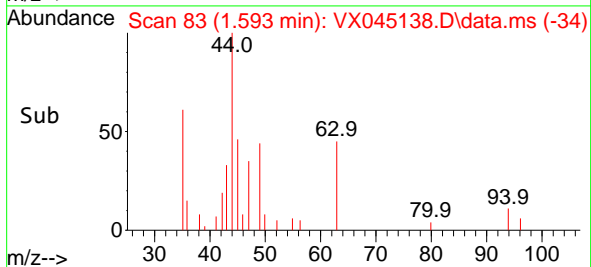
Tgt Ion:168 Resp: 72600
 Ion Ratio Lower Upper
 168 100
 99 55.4 48.2 72.4

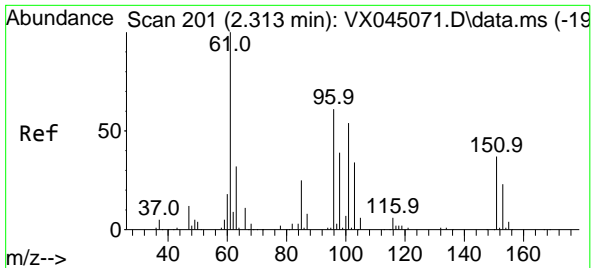


#5
 Bromomethane
 Concen: 0.296 ug/l
 RT: 1.593 min Scan# 83
 Delta R.T. -0.000 min
 Lab File: VX045138.D
 Acq: 05 Mar 2025 13:36



Tgt Ion: 94 Resp: 129
 Ion Ratio Lower Upper
 94 100
 96 53.6 75.0 112.4#

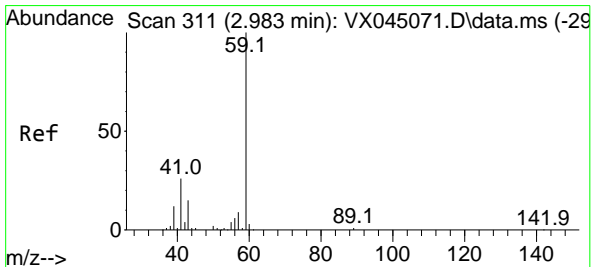
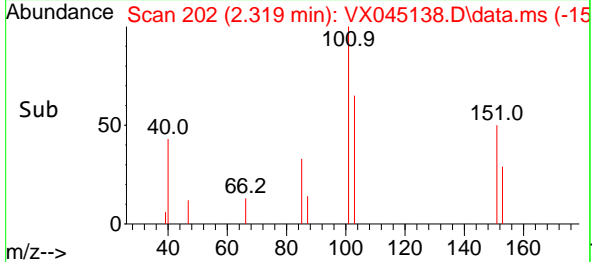
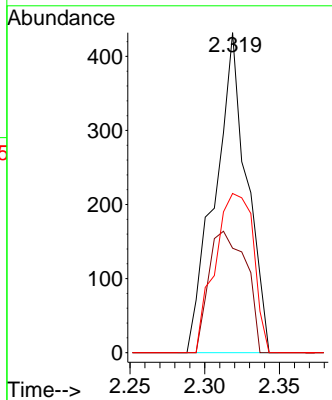
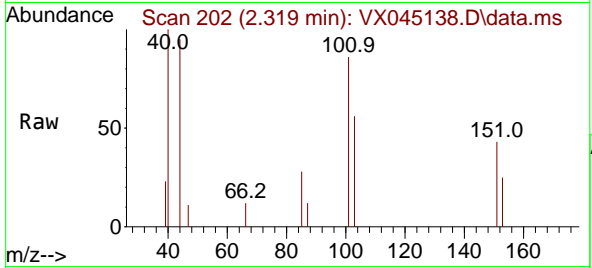




#9
 1,1,2-Trichlorotrifluoroethane
 Concen: 0.762 ug/l
 RT: 2.319 min Scan# 201
 Delta R.T. 0.006 min
 Lab File: VX045138.D
 Acq: 05 Mar 2025 13:36

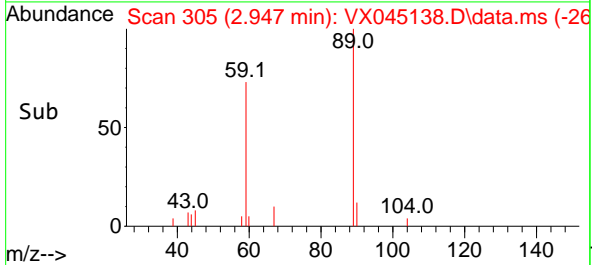
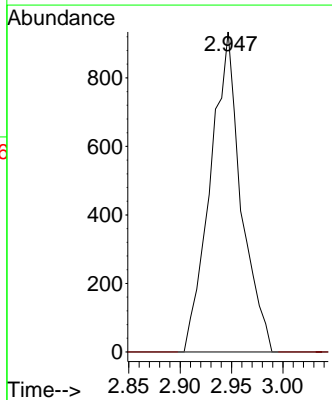
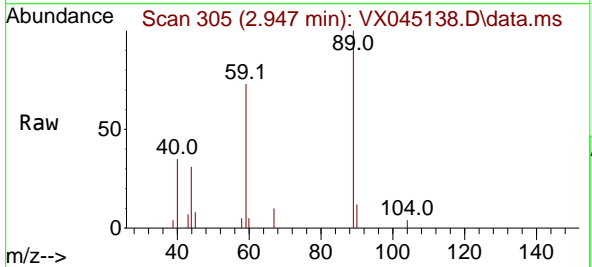
Instrument : MSVOA_X
 ClientSampleId : IDW-AQ-DRUM-610-022825DL

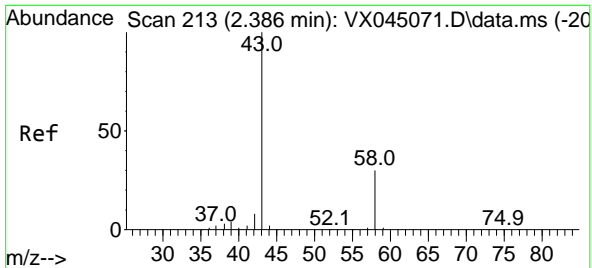
Tgt Ion	Resp	Lower	Upper
101	643		
85	44.2	36.2	54.4
151	59.7	56.4	84.6



#11
 Tert butyl alcohol
 Concen: 8.901 ug/l
 RT: 2.947 min Scan# 305
 Delta R.T. -0.037 min
 Lab File: VX045138.D
 Acq: 05 Mar 2025 13:36

Tgt Ion	Resp	Lower	Upper
59	1947		
57	0.0	7.8	11.8

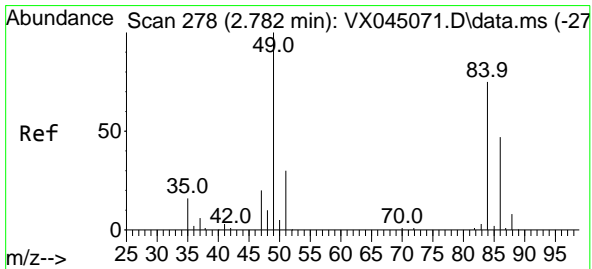
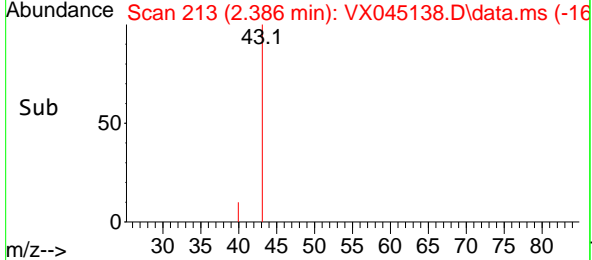
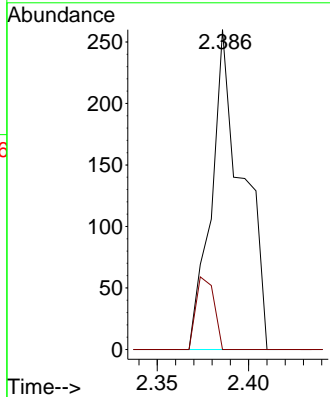
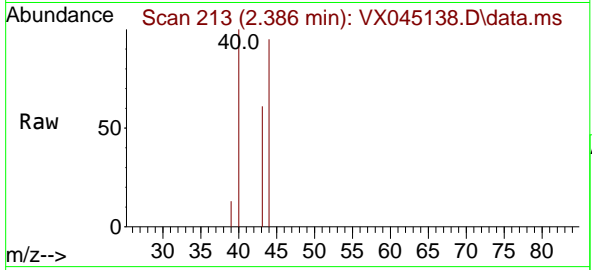




#16
 Acetone
 Concen: 0.575 ug/l
 RT: 2.386 min Scan# 211
 Delta R.T. -0.000 min
 Lab File: VX045138.D
 Acq: 05 Mar 2025 13:36

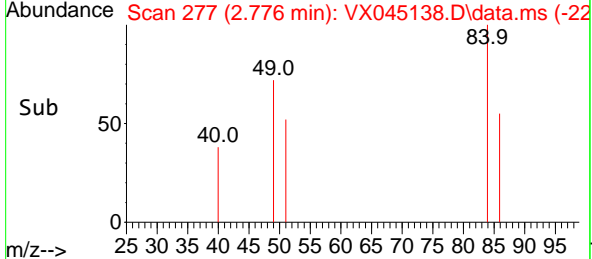
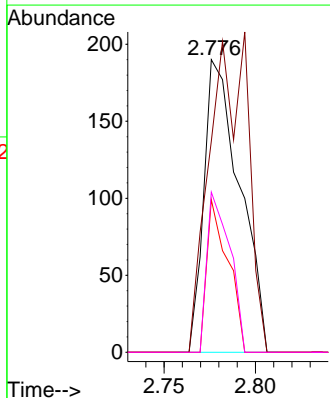
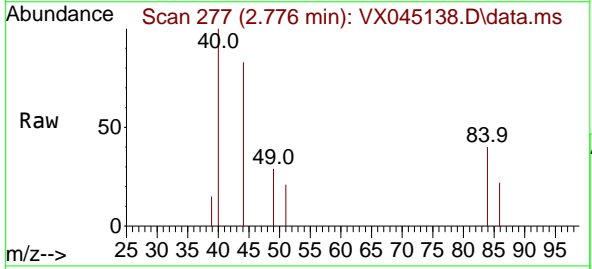
Instrument : MSVOA_X
 ClientSampleId : IDW-AQ-DRUM-610-022825DL

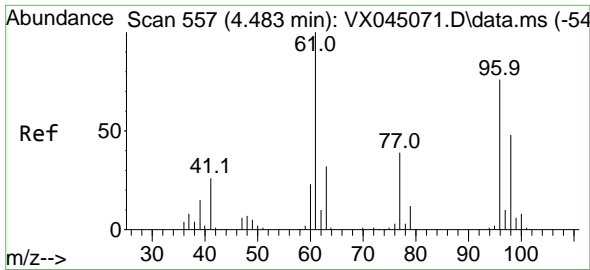
Tgt Ion	Resp	Lower	Upper
43	100		
58	0.0	24.2	36.4#



#20
 Methylene Chloride
 Concen: 0.244 ug/l
 RT: 2.776 min Scan# 277
 Delta R.T. -0.006 min
 Lab File: VX045138.D
 Acq: 05 Mar 2025 13:36

Tgt Ion	Resp	Lower	Upper
84	100		
49	72.1	106.5	159.7#
51	52.1	32.1	48.1#
86	54.7	50.0	75.0

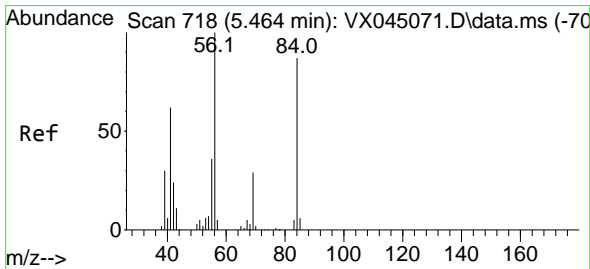
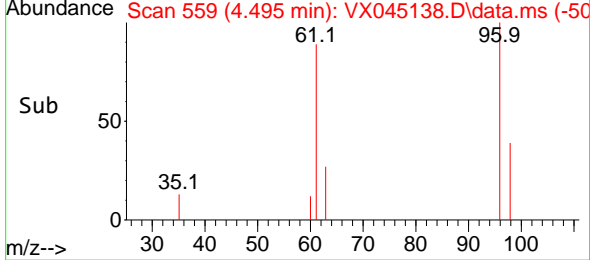
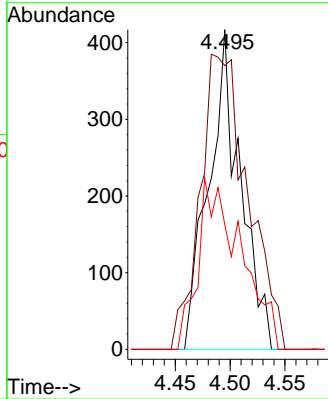
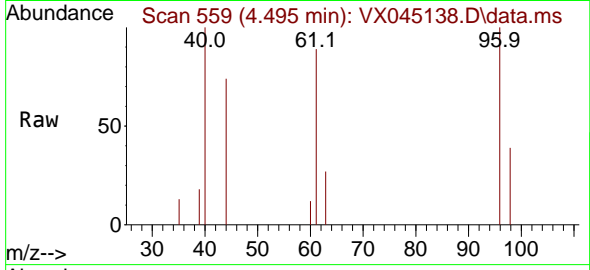




#27
 cis-1,2-Dichloroethene
 Concen: 0.773 ug/l
 RT: 4.495 min Scan# 511
 Delta R.T. 0.012 min
 Lab File: VX045138.D
 Acq: 05 Mar 2025 13:36

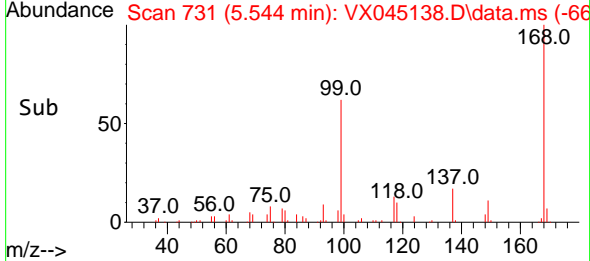
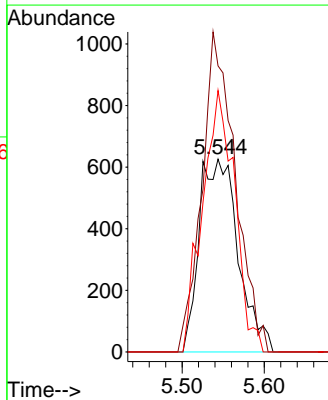
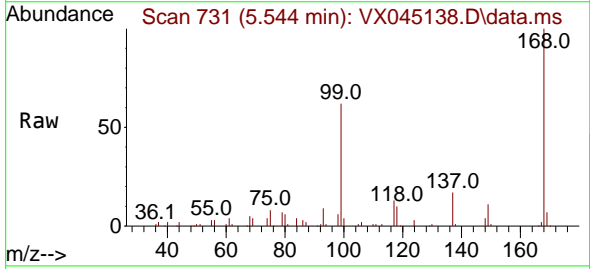
Instrument : MSVOA_X
 ClientSampleId : IDW-AQ-DRUM-610-022825DL

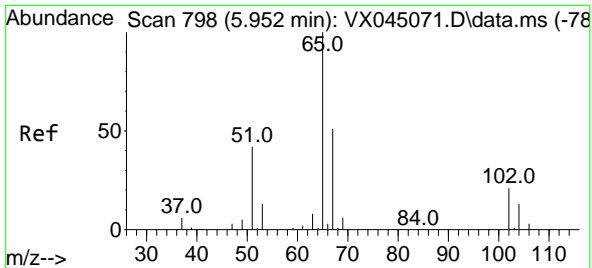
Tgt Ion	Resp	Lower	Upper
96	841		
96	100		
61	138.2	0.0	283.2
98	72.1	0.0	128.0



#31
 Cyclohexane
 Concen: 1.314 ug/l
 RT: 5.544 min Scan# 731
 Delta R.T. 0.079 min
 Lab File: VX045138.D
 Acq: 05 Mar 2025 13:36

Tgt Ion	Resp	Lower	Upper
56	2064		
56	100		
69	148.4	23.4	35.2#
84	135.6	69.4	104.2#

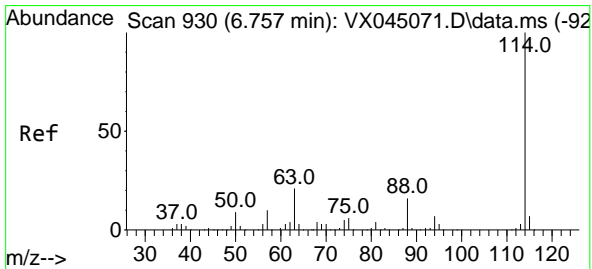
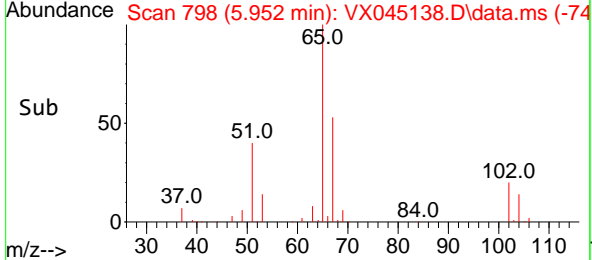
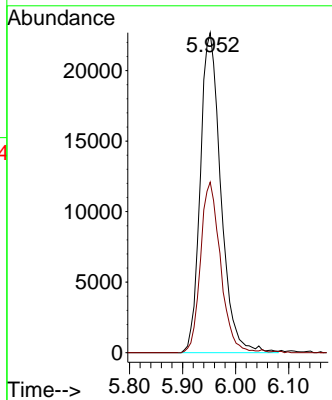
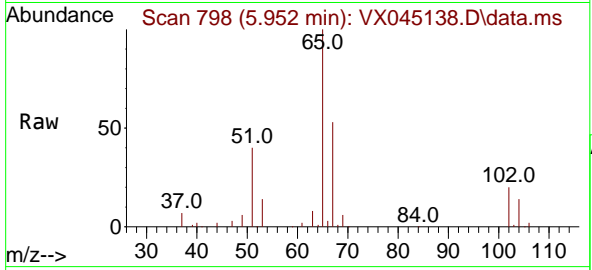




#33
 1,2-Dichloroethane-d4
 Concen: 52.920 ug/l
 RT: 5.952 min Scan# 798
 Delta R.T. -0.000 min
 Lab File: VX045138.D
 Acq: 05 Mar 2025 13:36

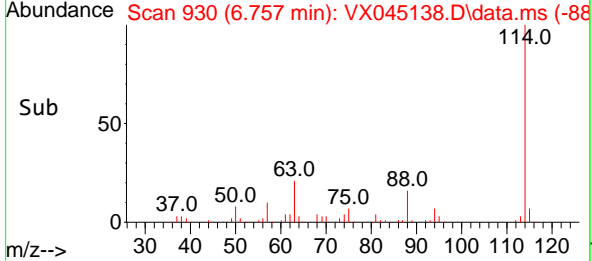
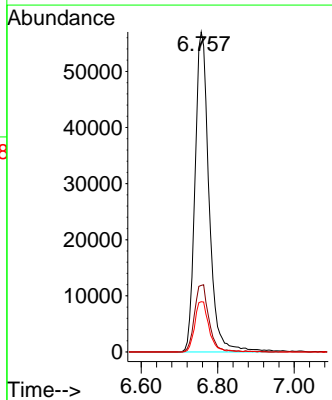
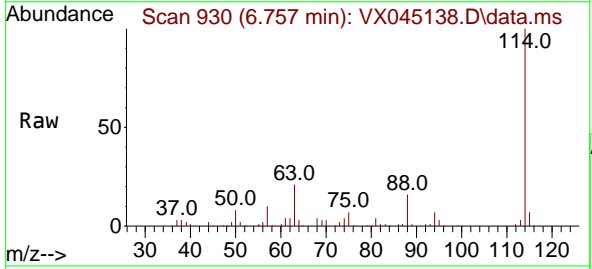
Instrument : MSVOA_X
 ClientSampleId : IDW-AQ-DRUM-610-022825DL

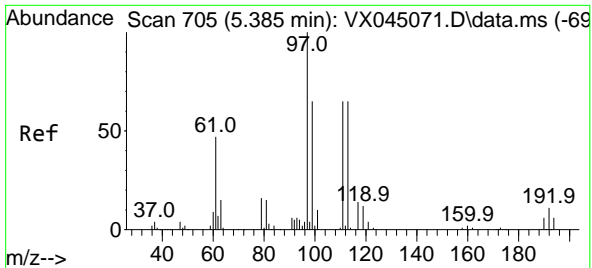
Tgt Ion: 65 Resp: 61113
 Ion Ratio Lower Upper
 65 100
 67 51.8 0.0 106.2



#34
 1,4-Difluorobenzene
 Concen: 50.000 ug/l
 RT: 6.757 min Scan# 930
 Delta R.T. -0.000 min
 Lab File: VX045138.D
 Acq: 05 Mar 2025 13:36

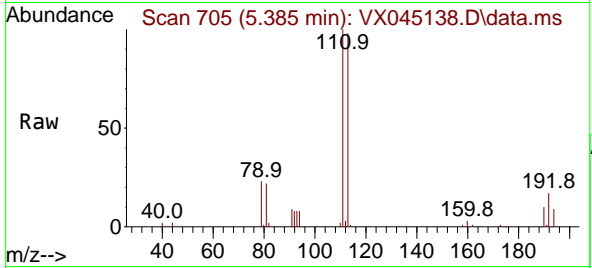
Tgt Ion: 114 Resp: 144845
 Ion Ratio Lower Upper
 114 100
 63 20.8 0.0 41.8
 88 15.7 0.0 32.8



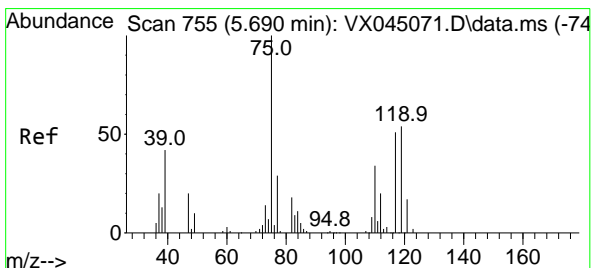
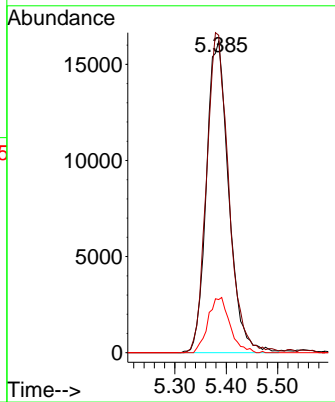
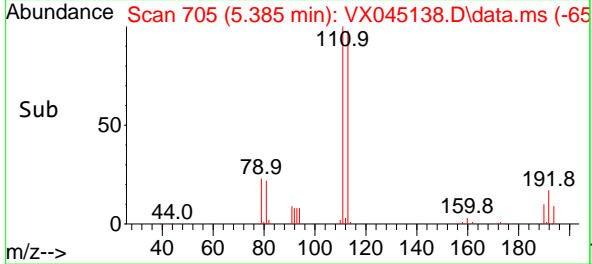


#35
 Dibromofluoromethane
 Concen: 50.481 ug/l
 RT: 5.385 min Scan# 705
 Delta R.T. -0.000 min
 Lab File: VX045138.D
 Acq: 05 Mar 2025 13:36

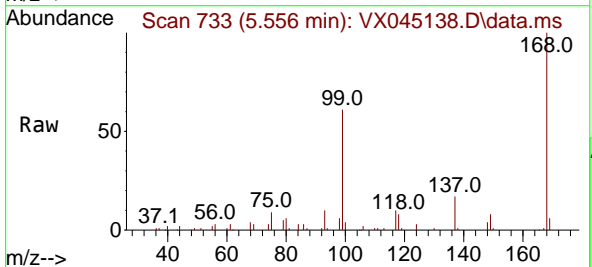
Instrument : MSVOA_X
 ClientSampleId : IDW-AQ-DRUM-610-022825DL



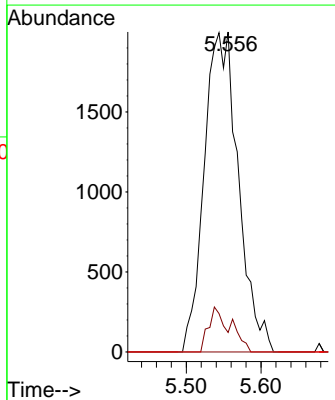
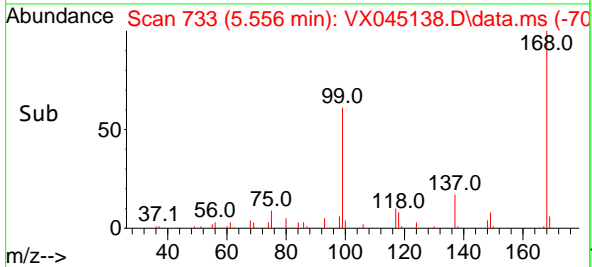
Tgt Ion:113 Resp: 48893
 Ion Ratio Lower Upper
 113 100
 111 102.1 81.8 122.6
 192 17.3 14.3 21.5

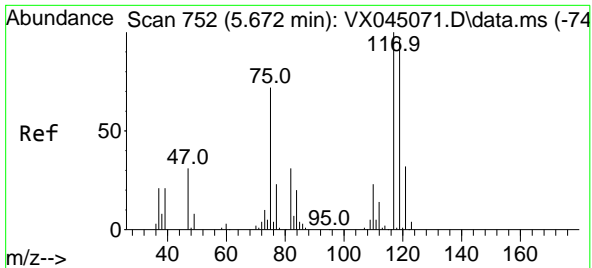


#36
 1,1-Dichloropropene
 Concen: 4.772 ug/l
 RT: 5.556 min Scan# 733
 Delta R.T. -0.134 min
 Lab File: VX045138.D
 Acq: 05 Mar 2025 13:36



Tgt Ion: 75 Resp: 6338
 Ion Ratio Lower Upper
 75 100
 110 6.4 16.9 50.6#
 77 0.0 24.5 36.7#

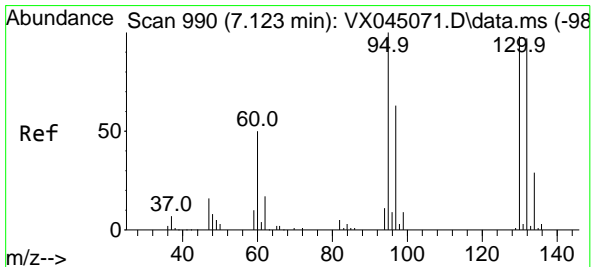
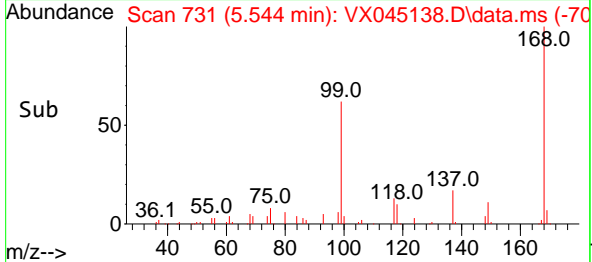
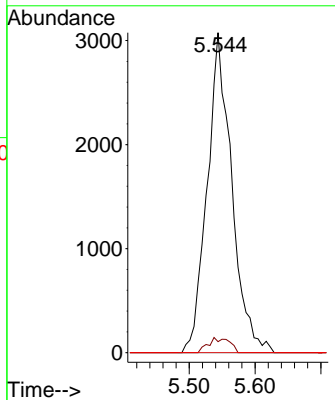
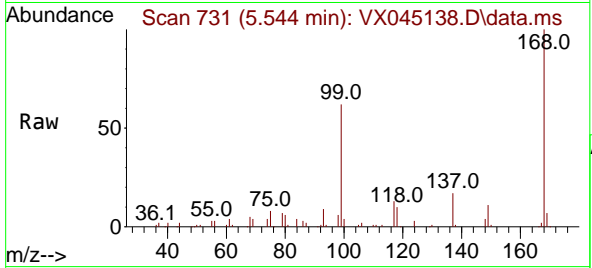




#38
 Carbon Tetrachloride
 Concen: 5.936 ug/l
 RT: 5.544 min Scan# 711
 Delta R.T. -0.128 min
 Lab File: VX045138.D
 Acq: 05 Mar 2025 13:36

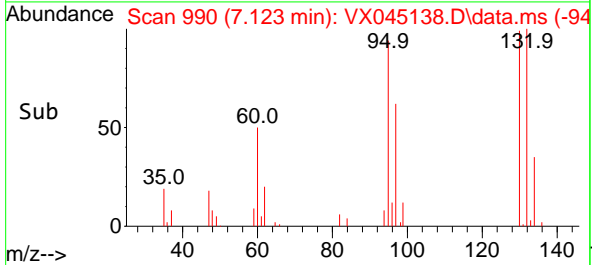
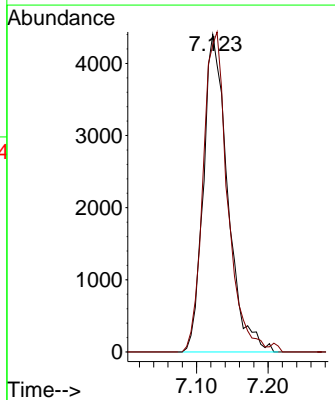
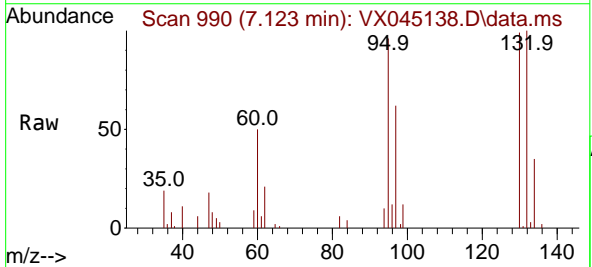
Instrument : MSVOA_X
 ClientSampleId : IDW-AQ-DRUM-610-022825DL

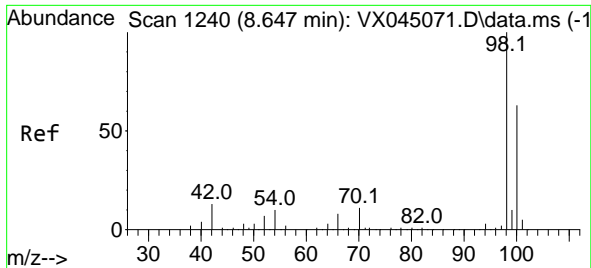
Tgt Ion	Resp	Lower	Upper
117	100		
119	3.5	76.7	115.1#
121	0.0	25.5	38.3#



#44
 Trichloroethene
 Concen: 10.568 ug/l
 RT: 7.123 min Scan# 990
 Delta R.T. -0.000 min
 Lab File: VX045138.D
 Acq: 05 Mar 2025 13:36

Tgt Ion	Resp	Lower	Upper
130	100		
95	96.8	0.0	205.0

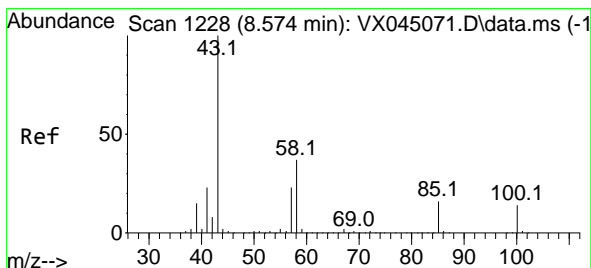
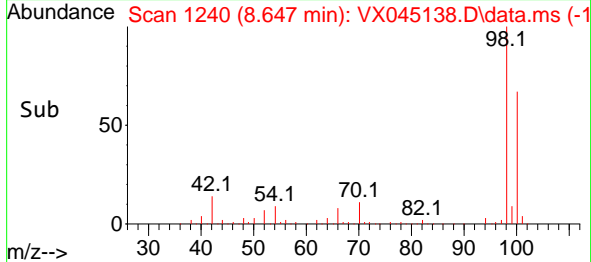
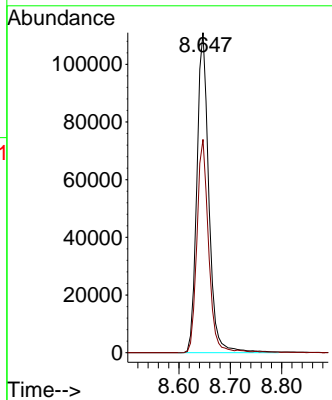
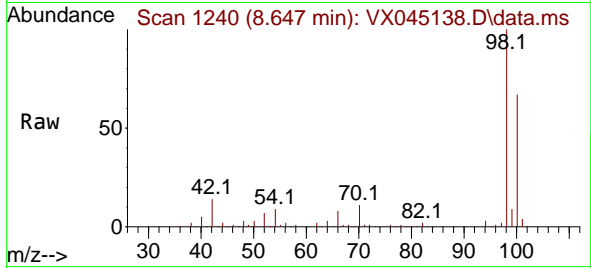




#50
 Toluene-d8
 Concen: 51.148 ug/l
 RT: 8.647 min Scan# 11
 Delta R.T. -0.000 min
 Lab File: VX045138.D
 Acq: 05 Mar 2025 13:36

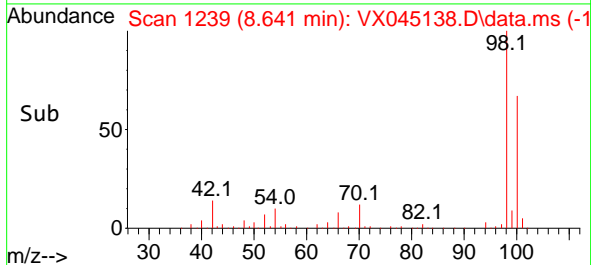
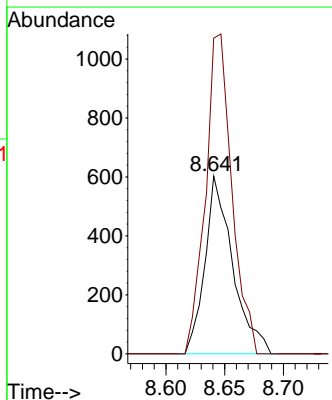
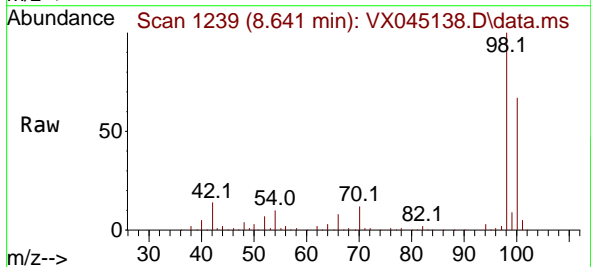
Instrument : MSVOA_X
 ClientSampleId : IDW-AQ-DRUM-610-022825DL

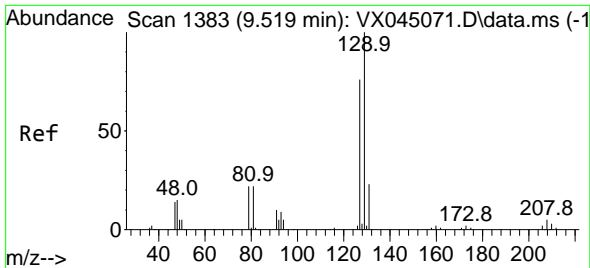
Tgt Ion: 98 Resp: 179597
 Ion Ratio Lower Upper
 98 100
 100 64.9 52.0 78.0



#51
 4-Methyl-2-Pentanone
 Concen: 0.584 ug/l
 RT: 8.641 min Scan# 1239
 Delta R.T. 0.067 min
 Lab File: VX045138.D
 Acq: 05 Mar 2025 13:36

Tgt Ion: 43 Resp: 992
 Ion Ratio Lower Upper
 43 100
 58 171.4 29.2 43.8#

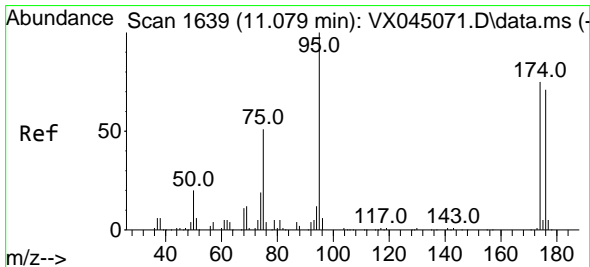
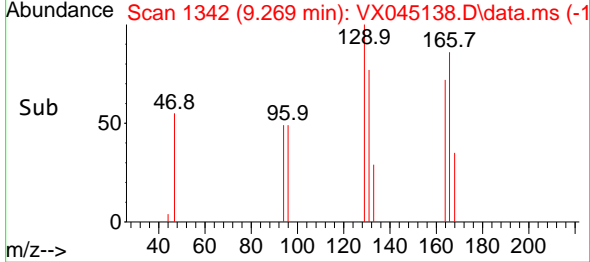
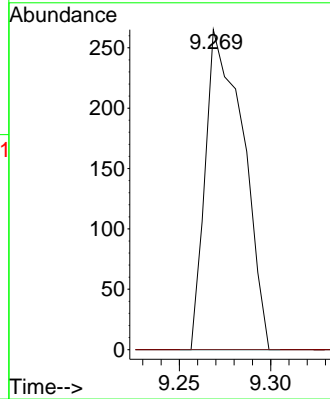
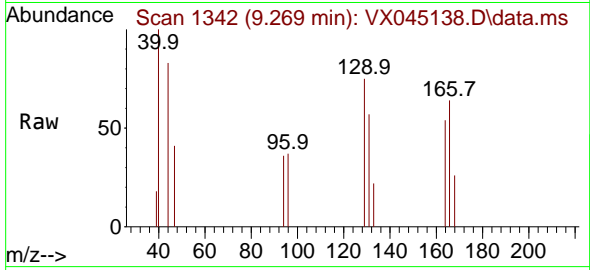




#60
 Dibromochloromethane
 Concen: 0.360 ug/l
 RT: 9.269 min Scan# 1342
 Delta R.T. -0.250 min
 Lab File: VX045138.D
 Acq: 05 Mar 2025 13:36

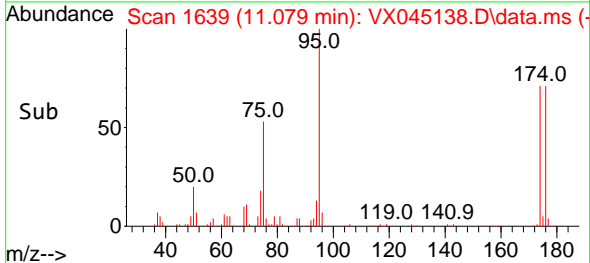
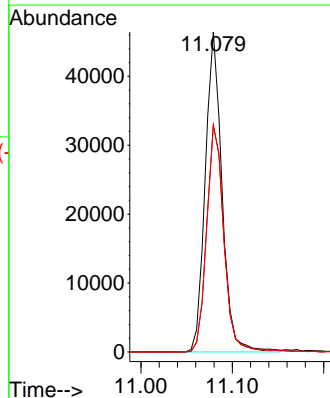
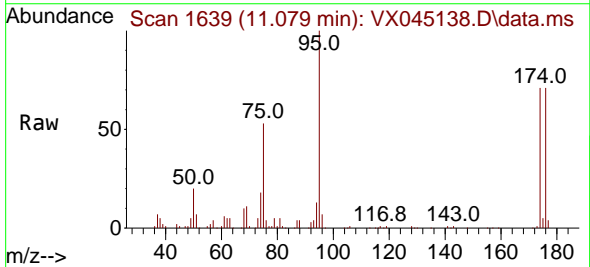
Instrument : MSVOA_X
 ClientSampleId : IDW-AQ-DRUM-610-022825DL

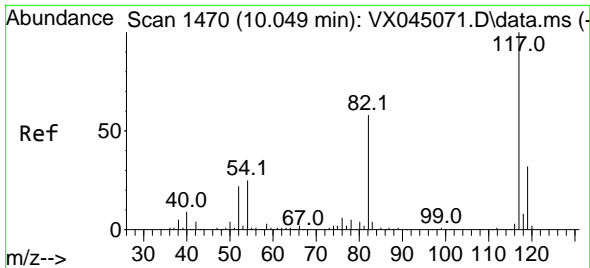
Tgt Ion:129 Resp: 381
 Ion Ratio Lower Upper
 129 100
 127 0.0 38.5 115.5#



#62
 4-Bromofluorobenzene
 Concen: 50.765 ug/l
 RT: 11.079 min Scan# 1639
 Delta R.T. -0.000 min
 Lab File: VX045138.D
 Acq: 05 Mar 2025 13:36

Tgt Ion: 95 Resp: 59067
 Ion Ratio Lower Upper
 95 100
 174 72.1 0.0 148.2
 176 72.8 0.0 141.4



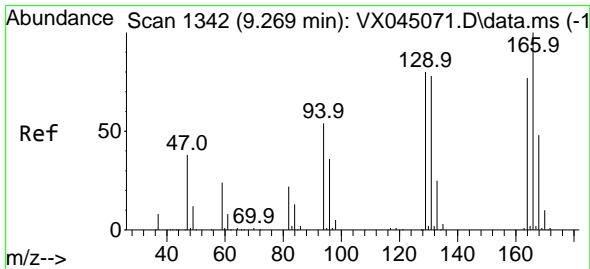
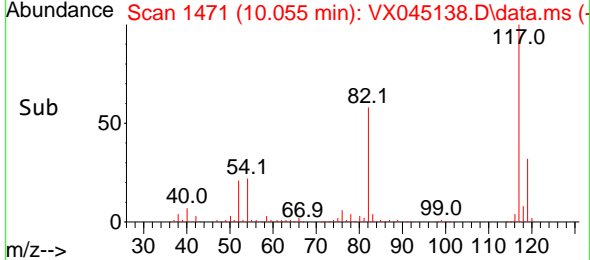
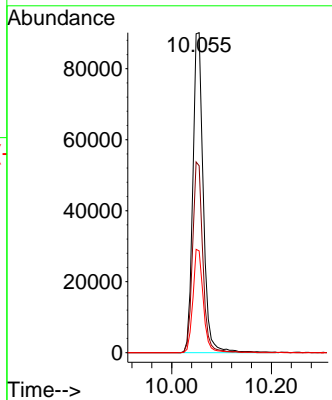
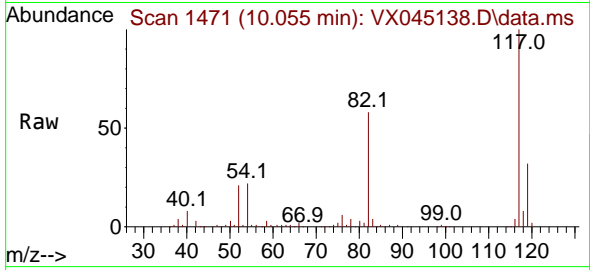


#63
 Chlorobenzene-d5
 Concen: 50.000 ug/l
 RT: 10.055 min Scan# 1471
 Delta R.T. 0.006 min
 Lab File: VX045138.D
 Acq: 05 Mar 2025 13:36

Instrument :
 MSVOA_X
ClientSampleId :
 IDW-AQ-DRUM-610-022825DL

Tgt Ion:117 Resp: 130870

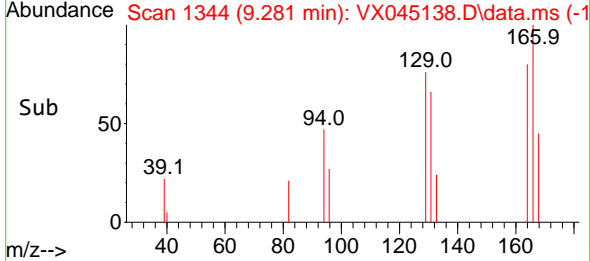
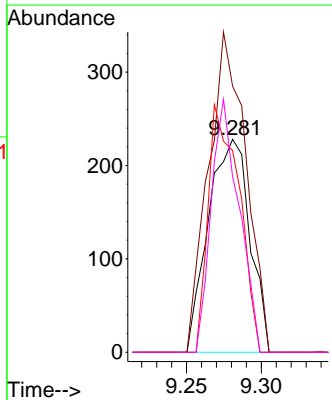
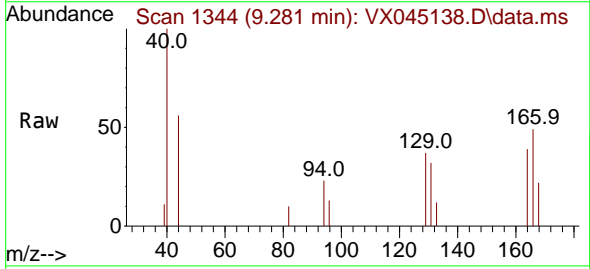
Ion	Ratio	Lower	Upper
117	100		
82	58.4	46.3	69.5
119	31.8	25.7	38.5

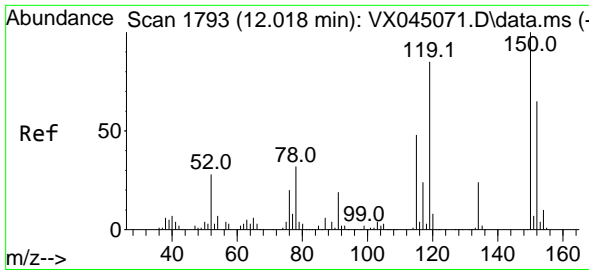


#64
 Tetrachloroethene
 Concen: 0.524 ug/l
 RT: 9.281 min Scan# 1344
 Delta R.T. 0.012 min
 Lab File: VX045138.D
 Acq: 05 Mar 2025 13:36

Tgt Ion:164 Resp: 439

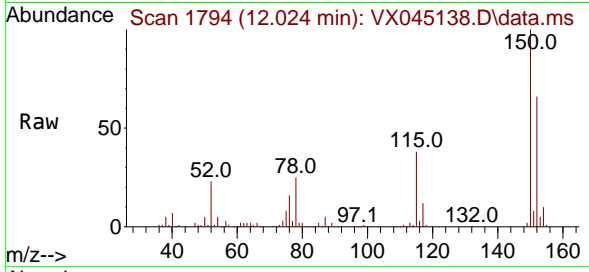
Ion	Ratio	Lower	Upper
164	100		
166	125.0	103.6	155.4
129	94.7	82.7	124.1
131	82.5	80.5	120.7



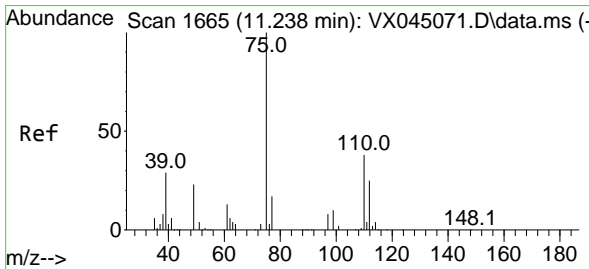
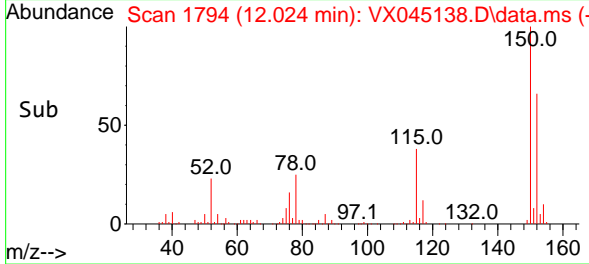
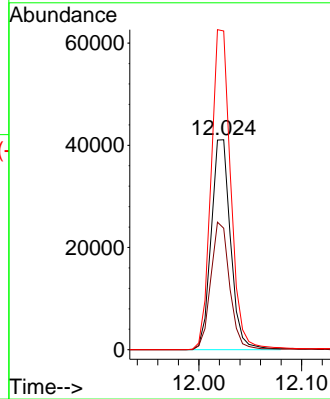


#72
 1,4-Dichlorobenzene-d4
 Concen: 50.000 ug/l
 RT: 12.024 min Scan# 11
 Delta R.T. 0.006 min
 Lab File: VX045138.D
 Acq: 05 Mar 2025 13:36

Instrument : MSVOA_X
 ClientSampleId : IDW-AQ-DRUM-610-022825DL

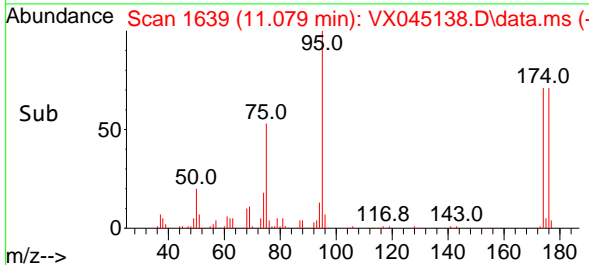
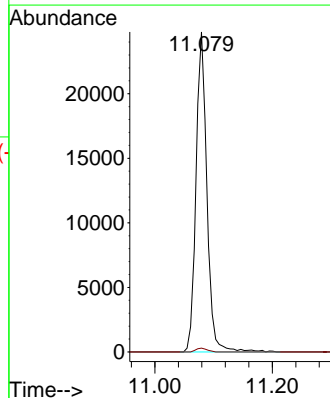
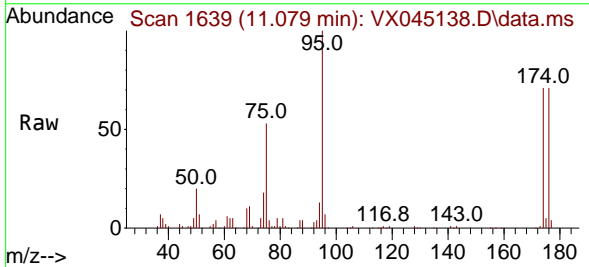


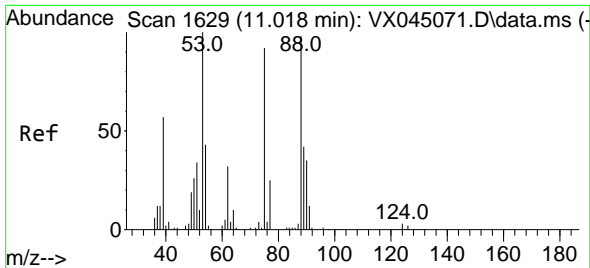
Tgt Ion:152 Resp: 53781
 Ion Ratio Lower Upper
 152 100
 115 59.5 44.2 132.6
 150 155.0 0.0 349.0



#76
 1,2,3-Trichloropropane
 Concen: 25.486 ug/l
 RT: 11.079 min Scan# 1639
 Delta R.T. -0.159 min
 Lab File: VX045138.D
 Acq: 05 Mar 2025 13:36

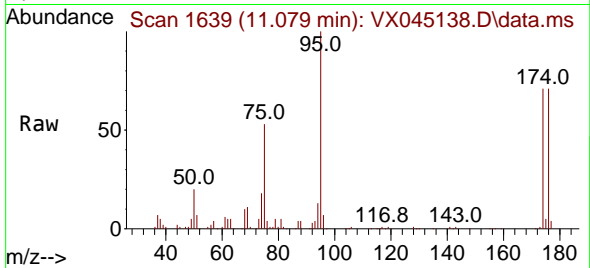
Tgt Ion: 75 Resp: 31902
 Ion Ratio Lower Upper
 75 100
 77 1.2 20.7 62.1#





#81
 trans-1,4-Dichloro-2-butene
 Concen: 87.217 ug/l
 RT: 11.079 min Scan# 10
 Delta R.T. 0.061 min
 Lab File: VX045138.D
 Acq: 05 Mar 2025 13:36

Instrument : MSVOA_X
 ClientSampleId : IDW-AQ-DRUM-610-022825DL



Tgt Ion: 75 Resp: 31902

Ion	Ratio	Lower	Upper
75	100		
53	0.0	88.5	132.7#
89	0.0	36.2	54.4#

