

Data Path : Z:\VOASRV\HPCHEM1\MSVOA_X\DATA\VX030719\
 Data File : VX007883.D
 Acq On : 07 Mar 2019 14:58
 Operator : JC/SP
 Sample : K1781-02
 Misc : 5.0mL/MSVOA_X/WATER
 ALS Vial : 11 Sample Multiplier: 1

Instrument :
 MSVOA_X
 ClientSampleId :
 OUTFALL001-190305

Quant Time: Mar 08 04:43:06 2019
 Quant Method : Z:\VOASRV\HPCHEM1\MSVOA_X\METHOD\82X030619W.M
 Quant Title : SW846 8260
 QLast Update : Thu Mar 07 07:33:26 2019
 Response via : Initial Calibration

Internal Standards	R.T.	QIon	Response	Conc	Units	Dev(Min)
1) Pentafluorobenzene	5.67	168	288020	50.00	ug/l	0.00
34) 1,4-Difluorobenzene	6.86	114	449590	50.00	ug/l	0.00
63) Chlorobenzene-d5	10.11	117	421576	50.00	ug/l	0.00
72) 1,4-Dichlorobenzene-d4	12.08	152	203284	50.00	ug/l	0.00

System Monitoring Compounds

33) 1,2-Dichloroethane-d4	6.07	65	159842	52.61	ug/l	0.00
Spiked Amount	50.000		Recovery	=	105.22%	
35) Dibromofluoromethane	5.51	113	146675	51.00	ug/l	0.00
Spiked Amount	50.000		Recovery	=	102.00%	
50) Toluene-d8	8.71	98	547477	51.84	ug/l	0.00
Spiked Amount	50.000		Recovery	=	103.68%	
62) 4-Bromofluorobenzene	11.13	95	198286	53.55	ug/l	0.00
Spiked Amount	50.000		Recovery	=	107.10%	

Target Compounds

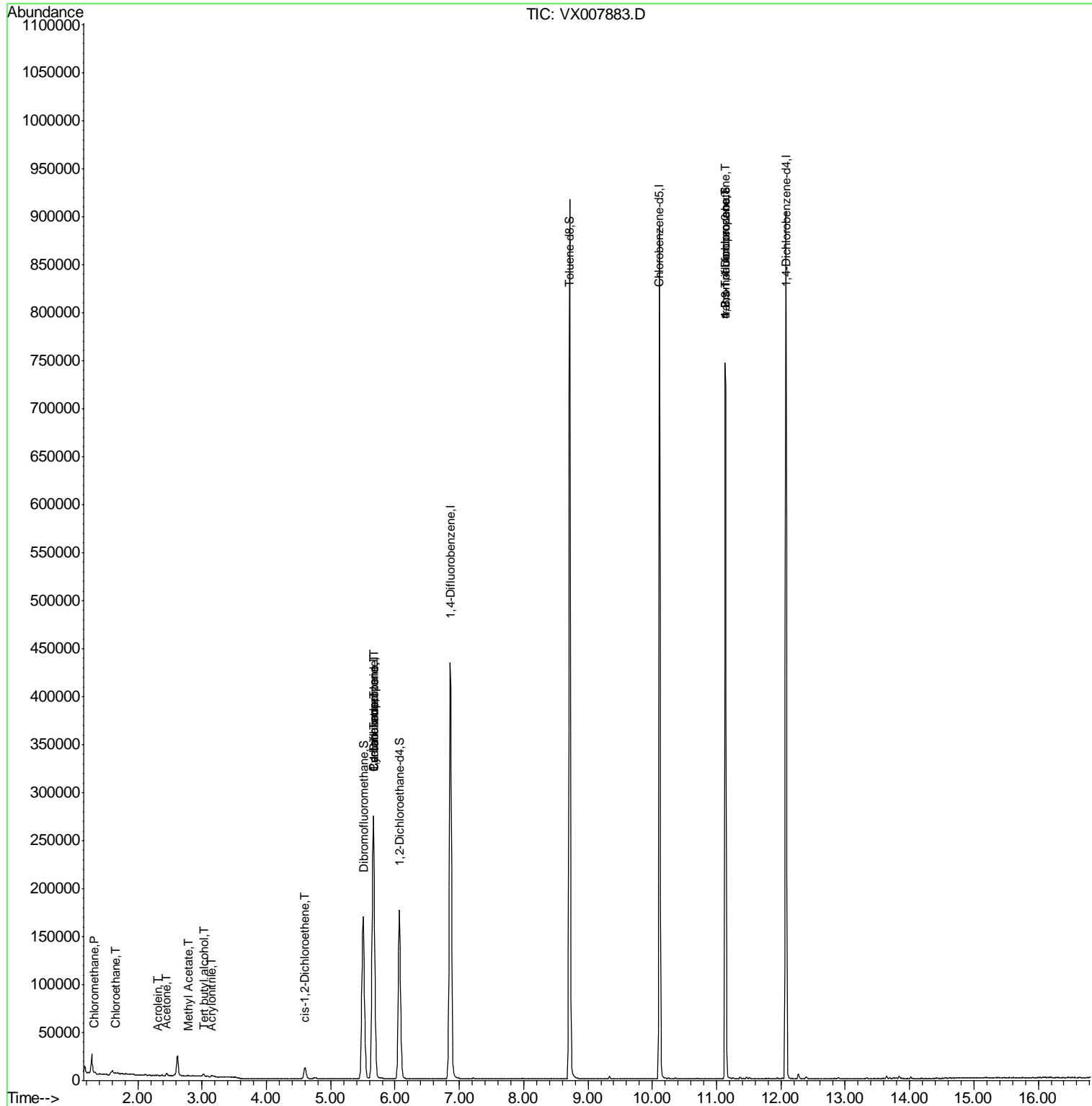
	R.T.	QIon	Response	Conc	Units	Qvalue
3) Chloromethane	1.33	50	706	0.223	ug/l	97
5) Bromomethane	1.65	94	441	Below Cal	#	72
6) Chloroethane	1.65	64	517	0.247	ug/l #	43
11) Tert butyl alcohol	3.03	59	1716	2.525	ug/l #	73
13) Acrolein	2.31	56	184	2.017	ug/l #	13
15) Acrylonitrile	3.15	53	427	0.249	ug/l #	79
16) Acetone	2.45	43	3407	1.937	ug/l	99
17) Carbon Disulfide	2.57	76	1579	Below Cal	#	75
18) Methyl Acetate	2.78	43	1254	0.336	ug/l #	74
27) cis-1,2-Dichloroethene	4.60	96	7653	2.480	ug/l	92
31) Cyclohexane	5.66	56	4794	1.027	ug/l #	1
36) 1,1-Dichloropropene	5.67	75	17940	4.407	ug/l #	49
38) Carbon Tetrachloride	5.67	117	24405	6.315	ug/l #	16
76) 1,2,3-Trichloropropane	11.13	75	90579	21.234	ug/l #	39
81) trans-1,4-Dichloro-2-buten	11.13	75	90579	67.874	ug/l #	11

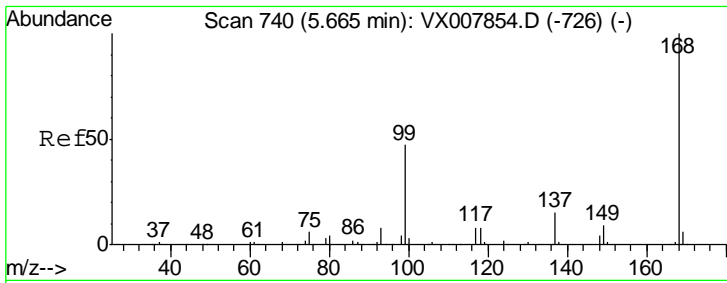
(#) = qualifier out of range (m) = manual integration (+) = signals summed

Data Path : Z:\VOASRV\HPCHEM1\MSVOA_X\DATA\VX030719\
 Data File : VX007883.D
 Acq On : 07 Mar 2019 14:58
 Operator : JC/SP
 Sample : K1781-02
 Misc : 5.0mL/MSVOA_X/WATER
 ALS Vial : 11 Sample Multiplier: 1

Instrument :
 MSVOA_X
 ClientSampleId :
 OUTFALL001-190305

Quant Time: Mar 08 04:43:06 2019
 Quant Method : Z:\VOASRV\HPCHEM1\MSVOA_X\METHOD\82X030619W.M
 Quant Title : SW846 8260
 QLast Update : Thu Mar 07 07:33:26 2019
 Response via : Initial Calibration

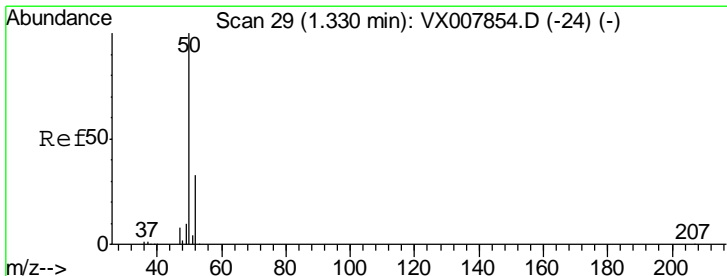
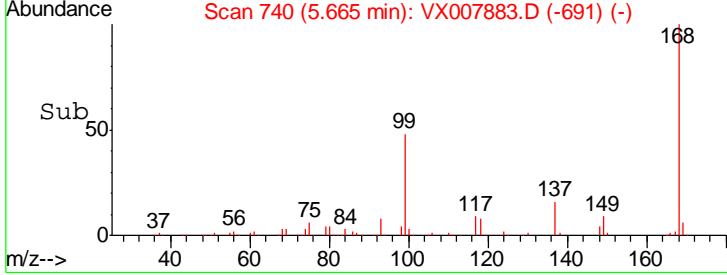
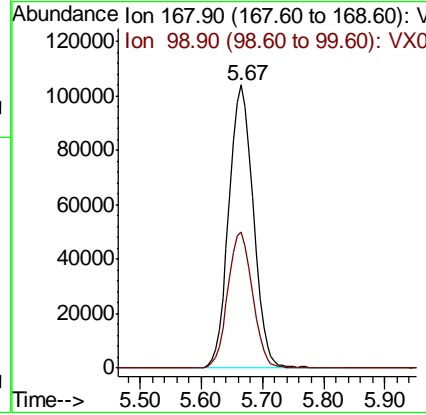
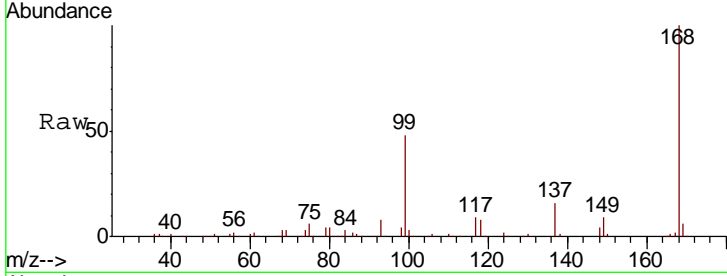




#1
 Pentafluorobenzene
 Concen: 50.000 ug/l
 RT: 5.67 min Scan# 740
 Delta R.T. 0.00 min
 Lab File: VX007883.D
 Acq: 07 Mar 2019 14:58

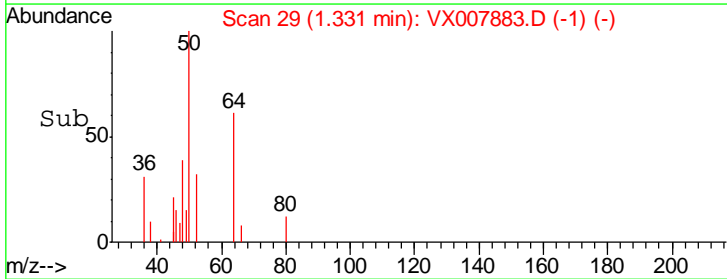
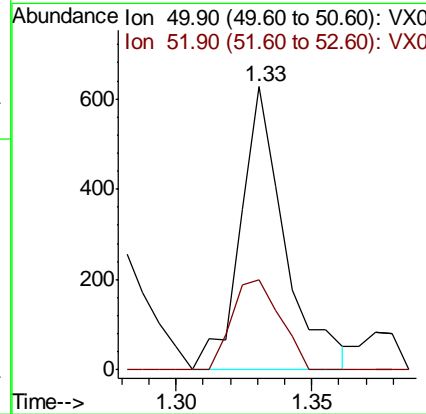
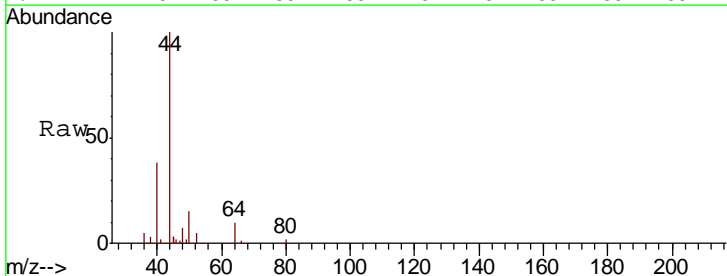
Instrument : MSVOA_X
 ClientSampleId : OUTFALL001-190305

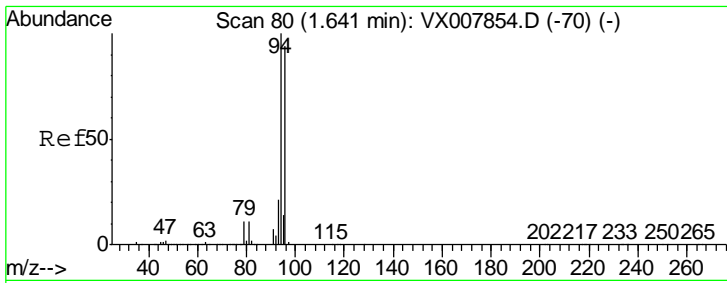
Tgt Ion: 168 Resp: 288020
 Ion Ratio Lower Upper
 168 100
 99 48.0 37.6 56.4



#3
 Chloromethane
 Concen: 0.223 ug/l
 RT: 1.33 min Scan# 29
 Delta R.T. 0.00 min
 Lab File: VX007883.D
 Acq: 07 Mar 2019 14:58

Tgt Ion: 50 Resp: 706
 Ion Ratio Lower Upper
 50 100
 52 31.6 26.5 39.7

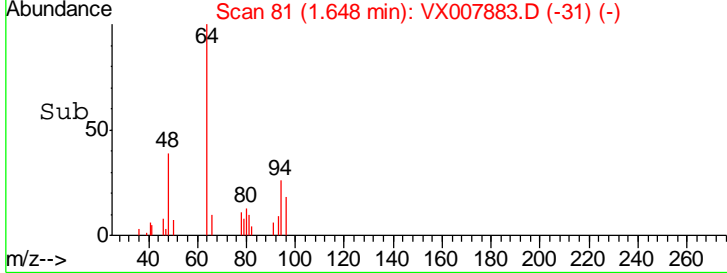
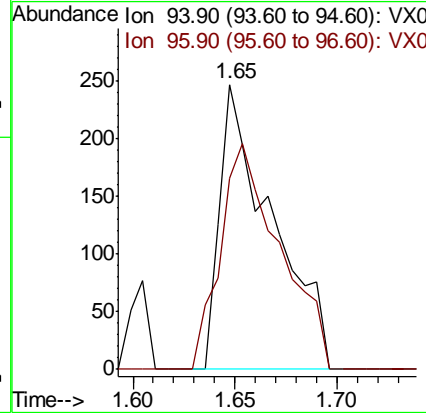
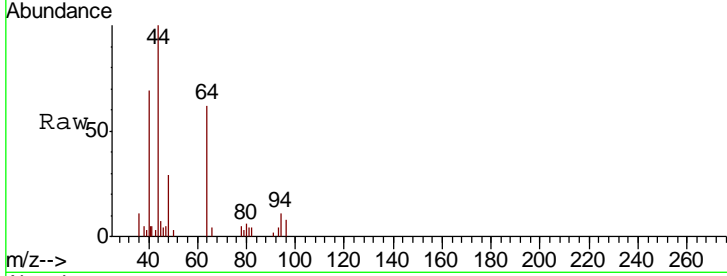




#5
 Bromomethane
 Concen: Below Cal
 RT: 1.65 min Scan# 81
 Delta R.T. 0.01 min
 Lab File: VX007883.D
 Acq: 07 Mar 2019 14:58

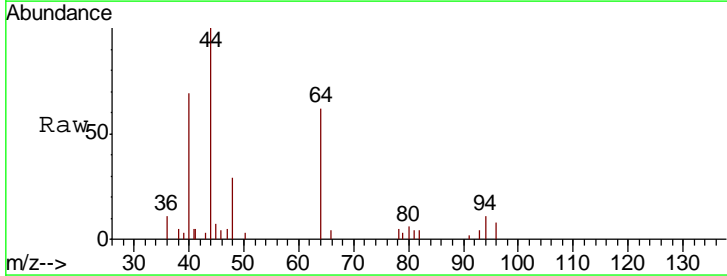
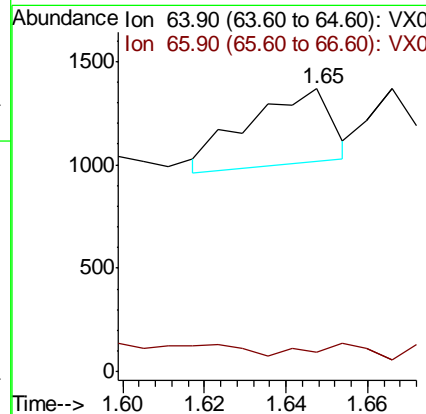
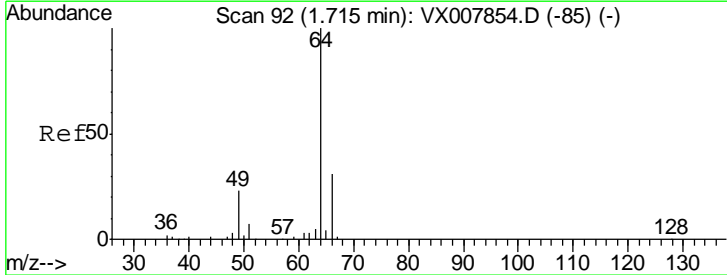
Instrument :
 MSVOA_X
 ClientSampled :
 OUTFALL001-190305

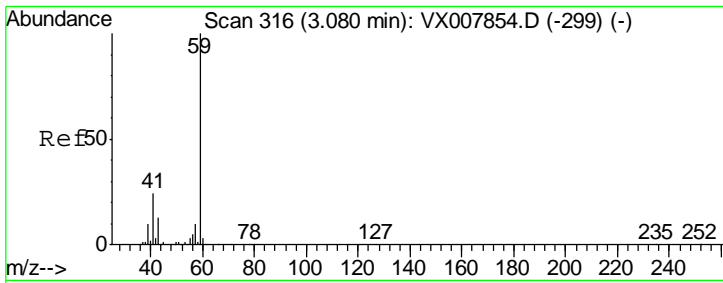
Tgt Ion: 94 Resp: 441
 Ion Ratio Lower Upper
 94 100
 96 67.2 75.5 113.3#



#6
 Chloroethane
 Concen: 0.247 ug/l
 RT: 1.65 min Scan# 81
 Delta R.T. -0.07 min
 Lab File: VX007883.D
 Acq: 07 Mar 2019 14:58

Tgt Ion: 64 Resp: 517
 Ion Ratio Lower Upper
 64 100
 66 0.0 25.2 37.8#

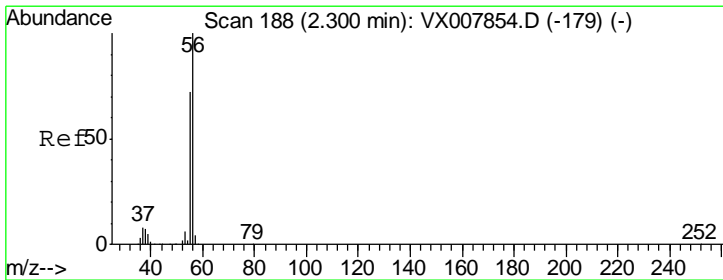
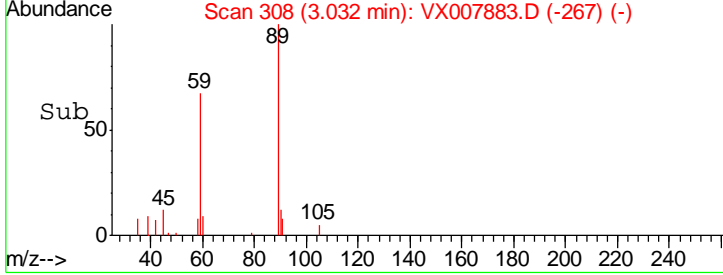
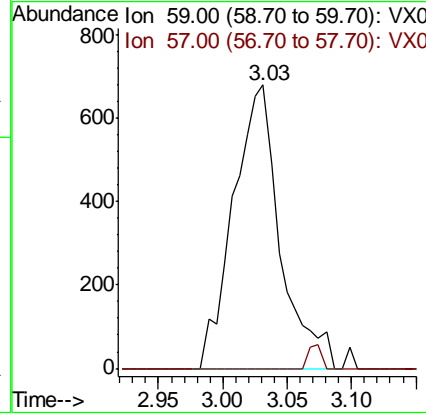
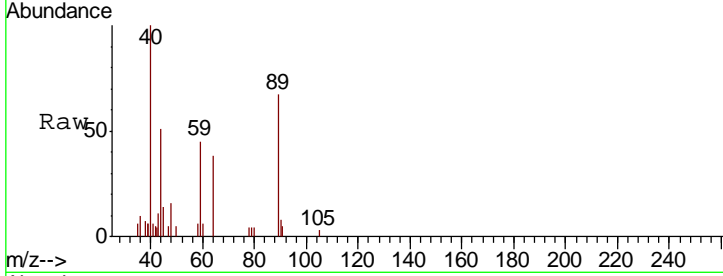




#11
 Tert butyl alcohol
 Concen: 2.525 ug/l
 RT: 3.03 min Scan# 308
 Delta R.T. -0.05 min
 Lab File: VX007883.D
 Acq: 07 Mar 2019 14:58

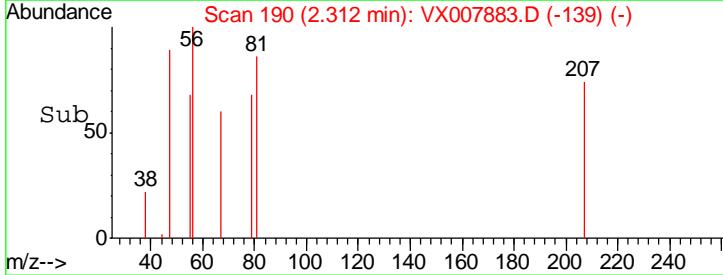
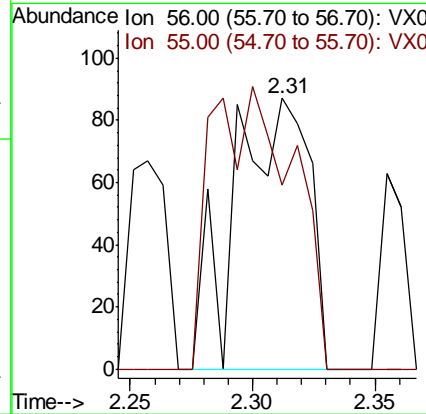
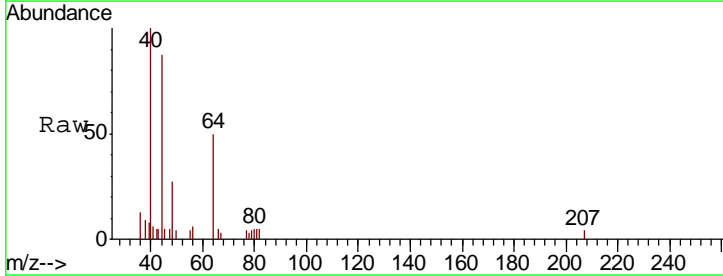
Instrument :
 MSVOA_X
 ClientSampleId :
 OUTFALL001-190305

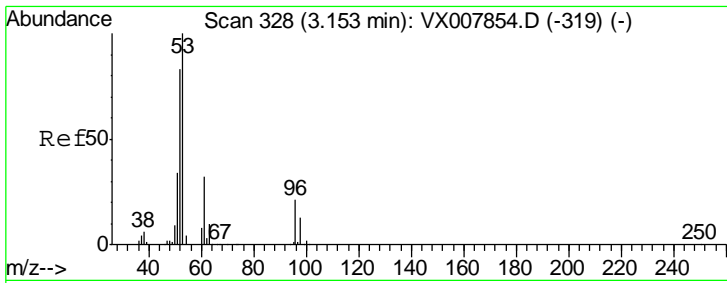
Tgt Ion: 59 Resp: 1716
 Ion Ratio Lower Upper
 59 100
 57 0.0 8.2 12.2#



#13
 Acrolein
 Concen: 2.017 ug/l
 RT: 2.31 min Scan# 190
 Delta R.T. 0.01 min
 Lab File: VX007883.D
 Acq: 07 Mar 2019 14:58

Tgt Ion: 56 Resp: 184
 Ion Ratio Lower Upper
 56 100
 55 0.0 57.8 86.6#

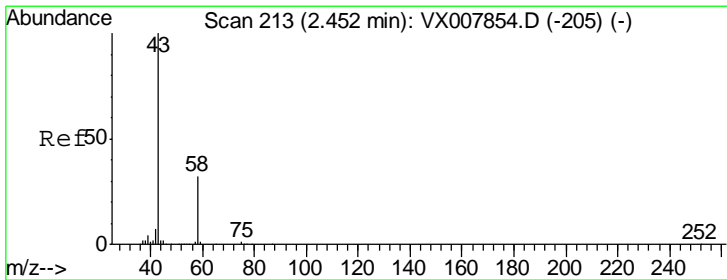
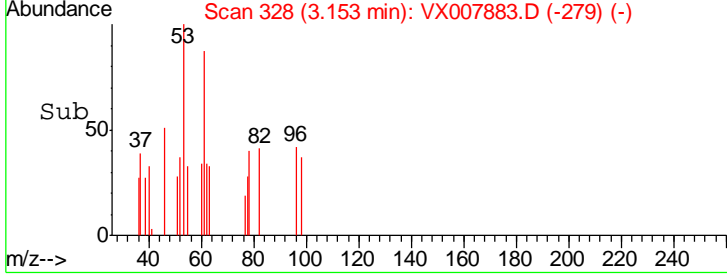
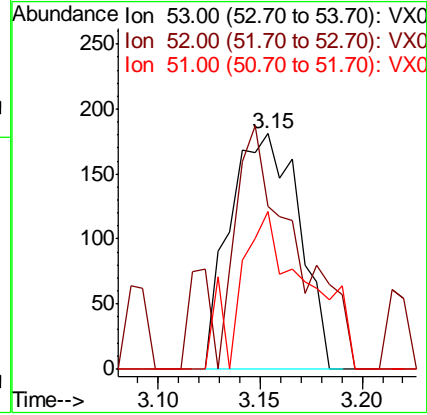
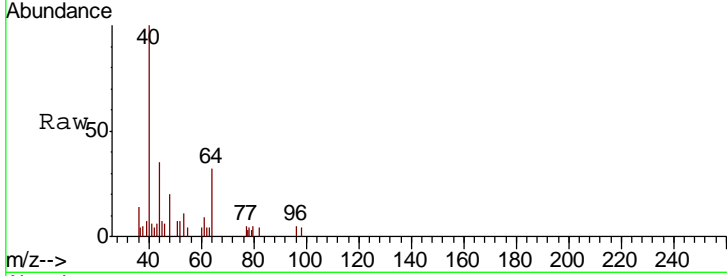




#15
 Acrylonitrile
 Concen: 0.249 ug/l
 RT: 3.15 min Scan# 328
 Delta R.T. 0.00 min
 Lab File: VX007883.D
 Acq: 07 Mar 2019 14:58

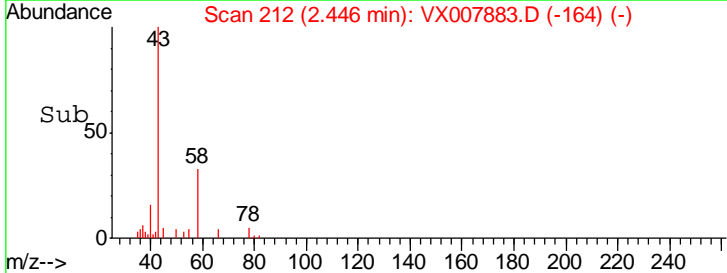
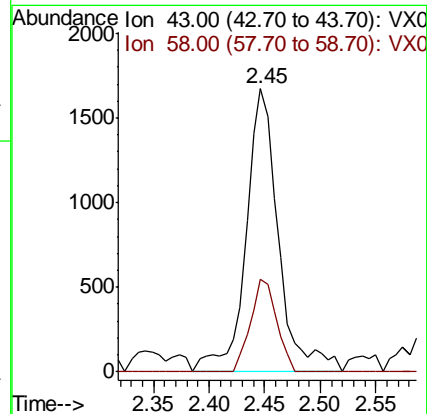
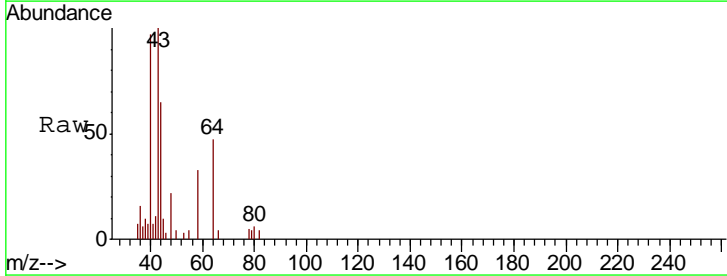
Instrument :
 MSVOA_X
ClientSampled :
 OUTFALL001-190305

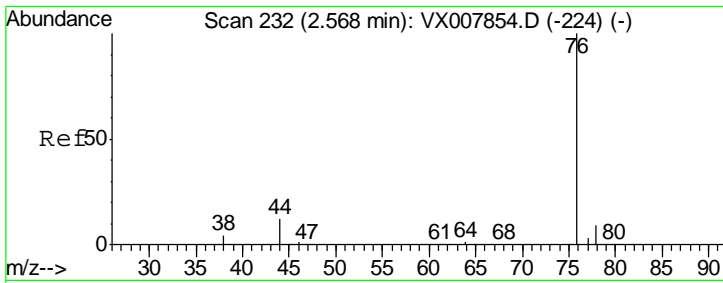
Tgt Ion	Resp	Lower	Upper
53	100		
52	89.0	66.0	99.0
51	66.0	28.0	42.0



#16
 Acetone
 Concen: 1.937 ug/l
 RT: 2.45 min Scan# 212
 Delta R.T. -0.01 min
 Lab File: VX007883.D
 Acq: 07 Mar 2019 14:58

Tgt Ion	Resp	Lower	Upper
43	100		
58	32.7	25.5	38.3

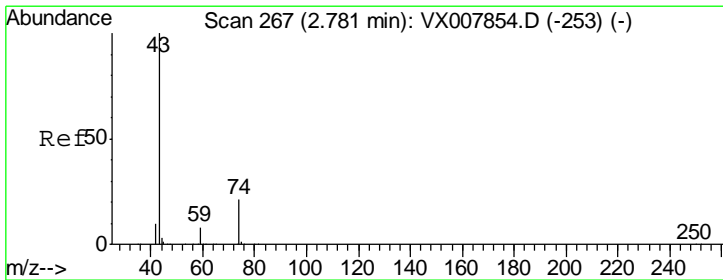
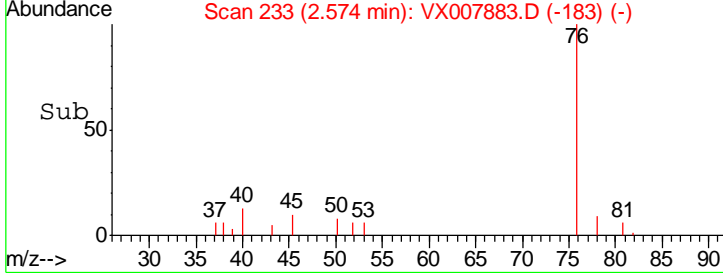
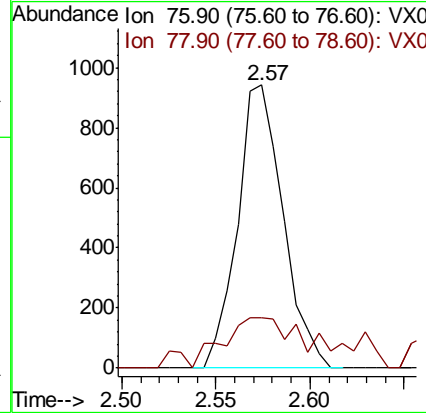
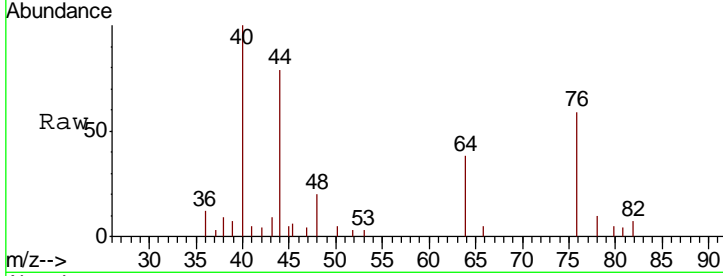




#17
 Carbon Disulfide
 Concen: Below Cal
 RT: 2.57 min Scan# 233
 Delta R.T. 0.01 min
 Lab File: VX007883.D
 Acq: 07 Mar 2019 14:58

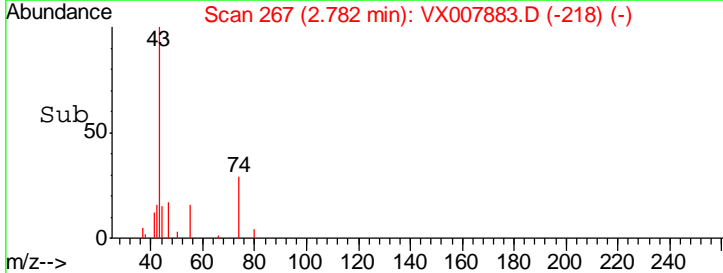
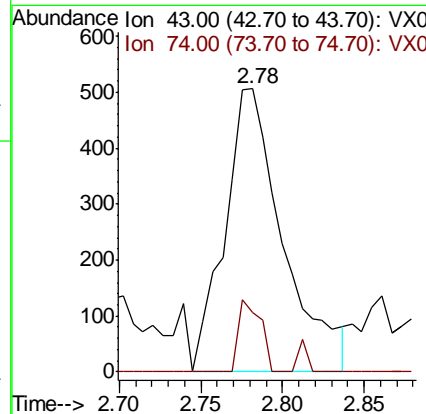
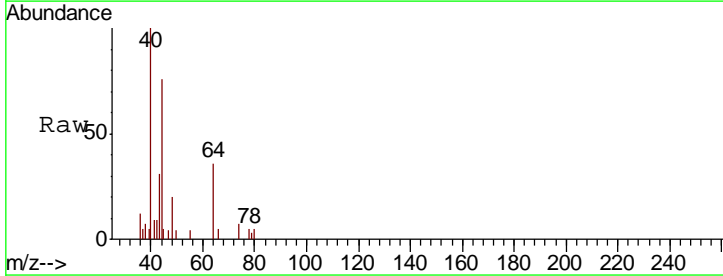
Instrument :
 MSVOA_X
 ClientSampleId :
 OUTFALL001-190305

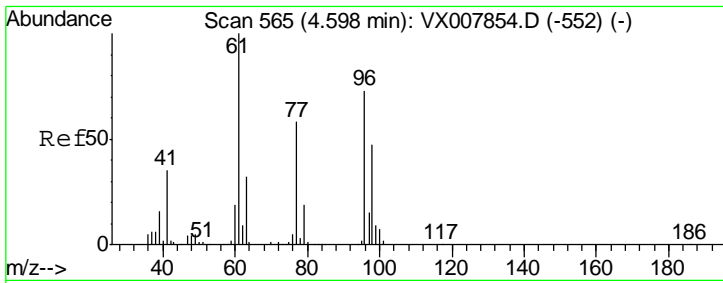
Tgt Ion: 76 Resp: 1579
 Ion Ratio Lower Upper
 76 100
 78 17.9 7.2 10.8#



#18
 Methyl Acetate
 Concen: 0.336 ug/l
 RT: 2.78 min Scan# 267
 Delta R.T. 0.00 min
 Lab File: VX007883.D
 Acq: 07 Mar 2019 14:58

Tgt Ion: 43 Resp: 1254
 Ion Ratio Lower Upper
 43 100
 74 9.6 17.8 26.6#

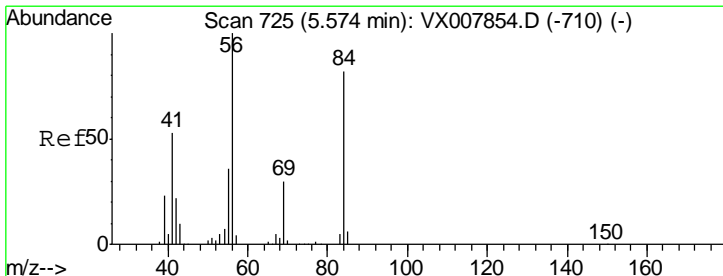
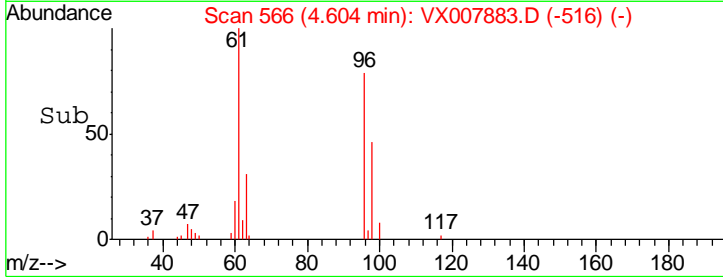
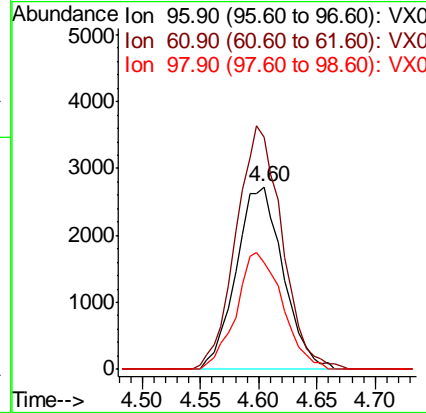
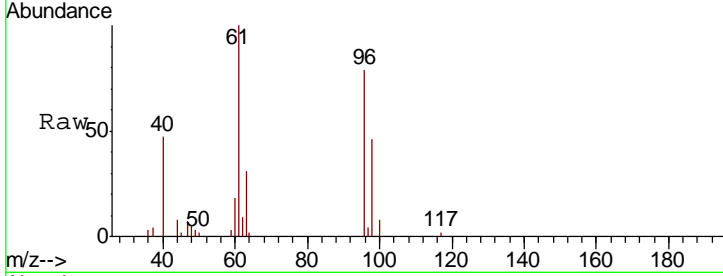




#27
 cis-1,2-Dichloroethene
 Concen: 2.480 ug/l
 RT: 4.60 min Scan# 566
 Delta R.T. 0.01 min
 Lab File: VX007883.D
 Acq: 07 Mar 2019 14:58

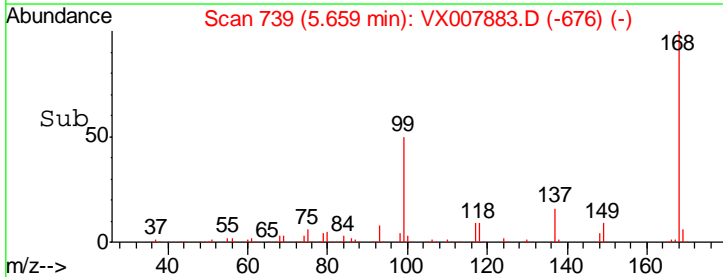
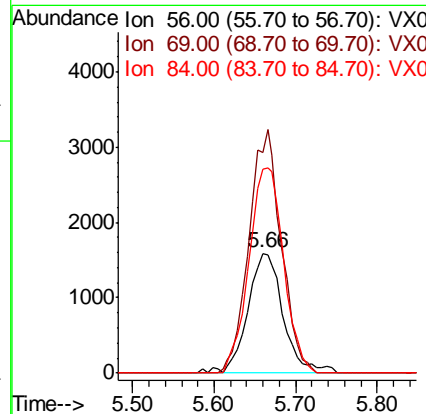
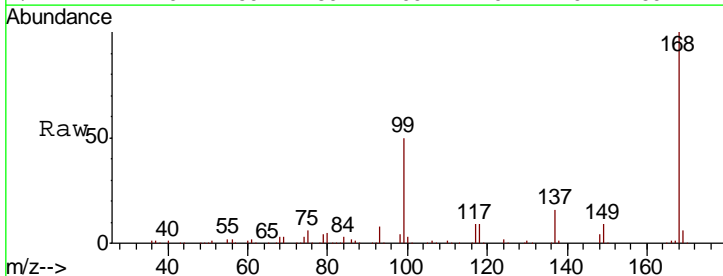
Instrument :
 MSVOA_X
ClientSampleID :
 OUTFALL001-190305

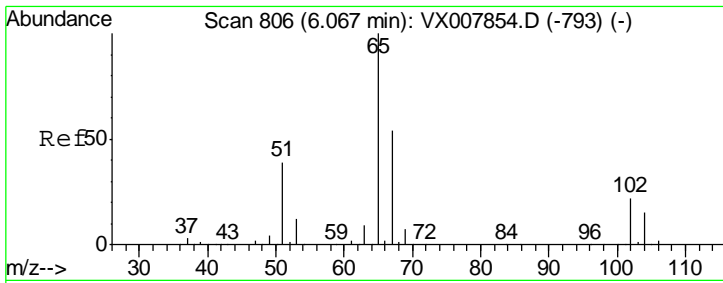
Tgt Ion	Resp	Lower	Upper
96	7653		
61	130.6	0.0	288.0
98	62.7	0.0	129.0



#31
 Cyclohexane
 Concen: 1.027 ug/l
 RT: 5.66 min Scan# 739
 Delta R.T. 0.09 min
 Lab File: VX007883.D
 Acq: 07 Mar 2019 14:58

Tgt Ion	Resp	Lower	Upper
56	4794		
69	184.2	24.0	36.0#
84	171.1	65.3	97.9#



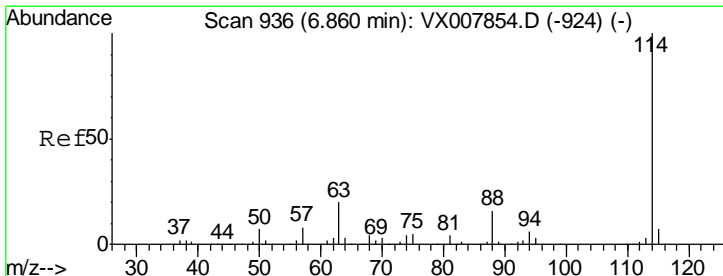
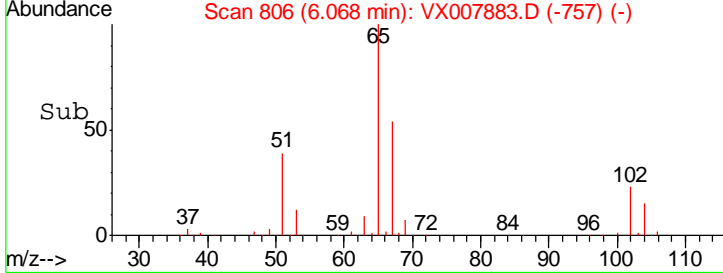
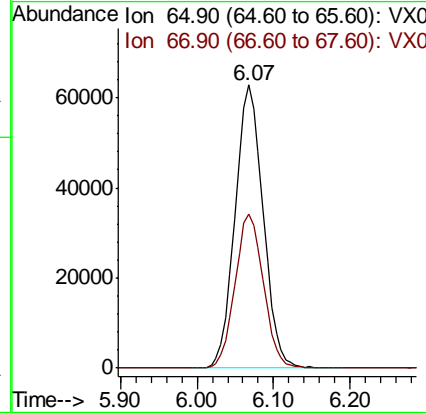
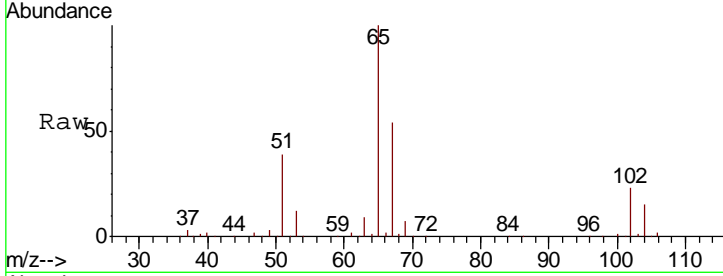


#33
 1,2-Dichloroethane-d4
 Concen: 52.608 ug/l
 RT: 6.07 min Scan# 806
 Delta R.T. 0.00 min
 Lab File: VX007883.D
 Acq: 07 Mar 2019 14:58

Instrument : MSVOA_X
 ClientSampleId : OUTFALL001-190305

Tgt Ion: 65 Resp: 159842

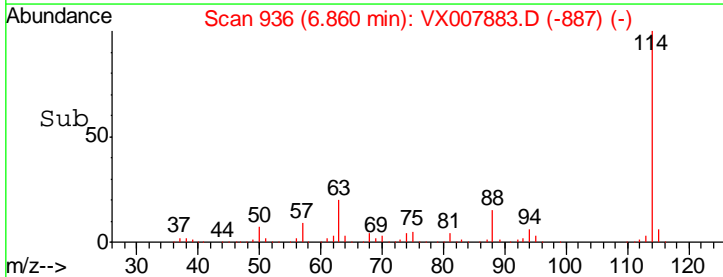
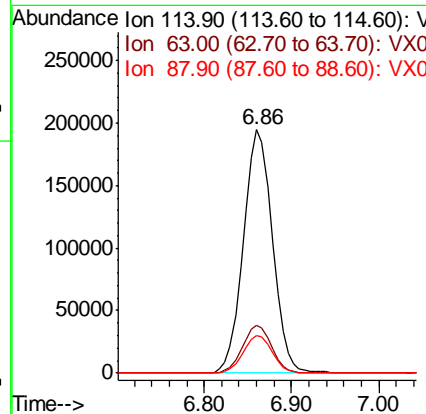
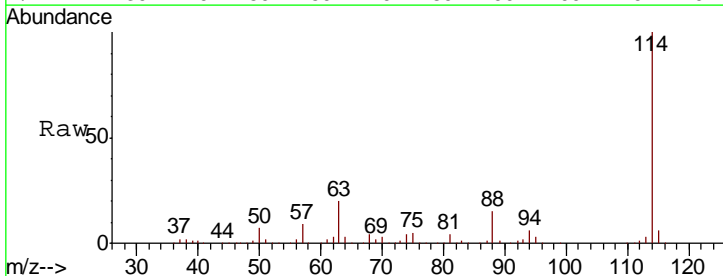
Ion	Ratio	Lower	Upper
65	100		
67	55.1	0.0	110.0

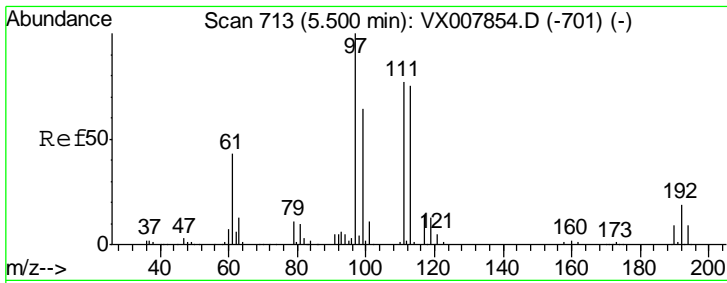


#34
 1,4-Difluorobenzene
 Concen: 50.000 ug/l
 RT: 6.86 min Scan# 936
 Delta R.T. 0.00 min
 Lab File: VX007883.D
 Acq: 07 Mar 2019 14:58

Tgt Ion: 114 Resp: 449590

Ion	Ratio	Lower	Upper
114	100		
63	19.7	0.0	39.8
88	15.2	0.0	31.4

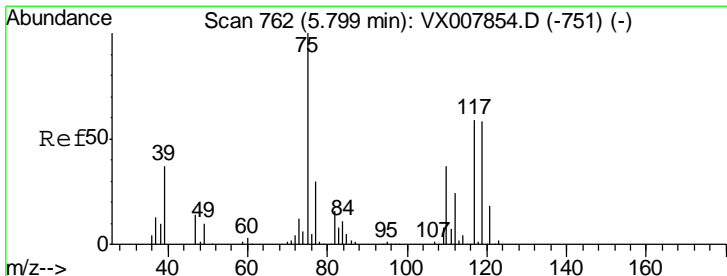
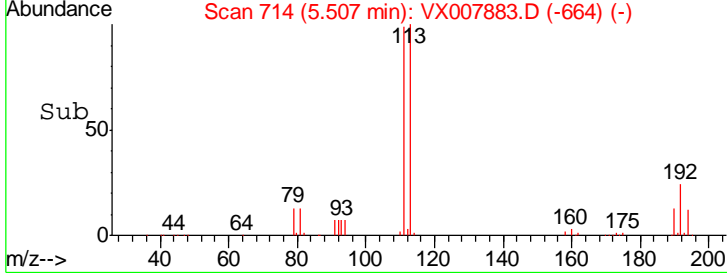
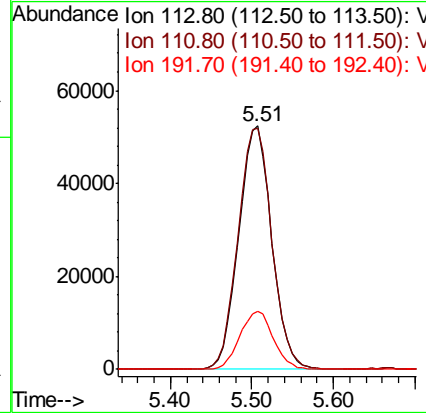
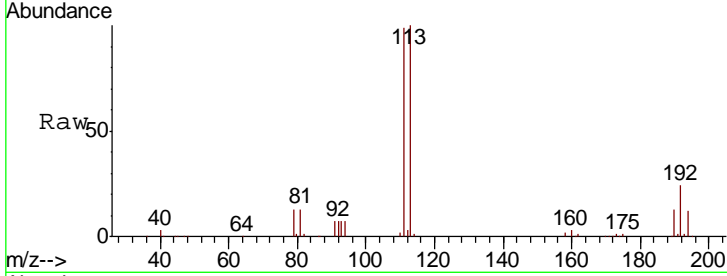




#35
 Dibromofluoromethane
 Concen: 51.002 ug/l
 RT: 5.51 min Scan# 714
 Delta R.T. 0.01 min
 Lab File: VX007883.D
 Acq: 07 Mar 2019 14:58

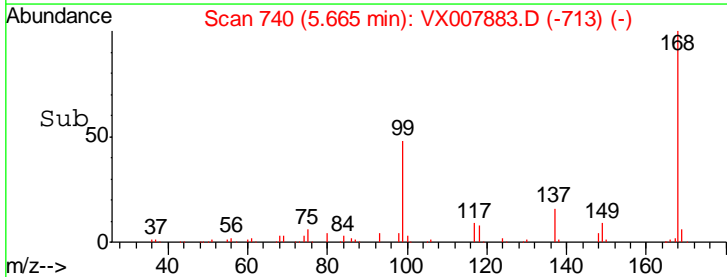
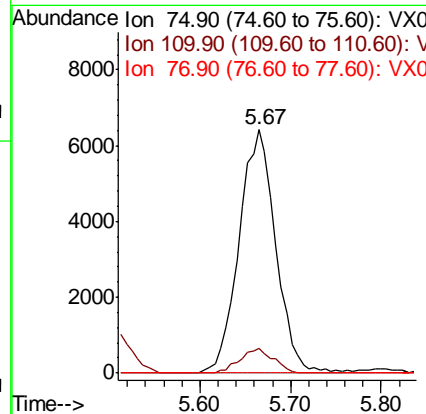
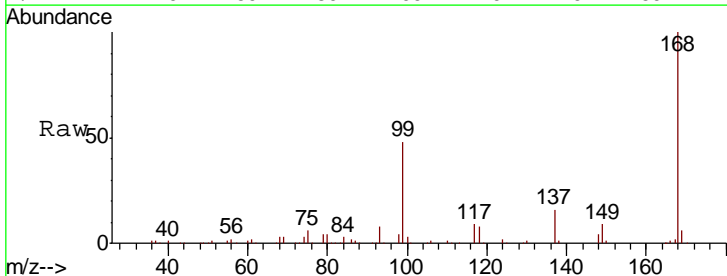
Instrument :
 MSVOA_X
ClientSampled :
 OUTFALL001-190305

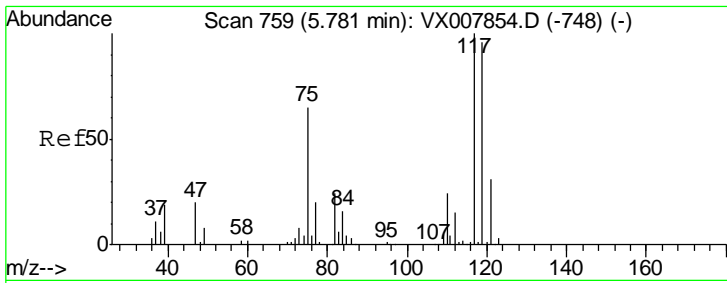
Tgt Ion	Resp	Lower	Upper
113	146675		
111	101.9	81.4	122.0
192	24.2	19.4	29.0



#36
 1,1-Dichloropropene
 Concen: 4.407 ug/l
 RT: 5.67 min Scan# 740
 Delta R.T. -0.13 min
 Lab File: VX007883.D
 Acq: 07 Mar 2019 14:58

Tgt Ion	Resp	Lower	Upper
75	17940		
110	9.2	18.4	55.0#
77	0.0	25.0	37.4#

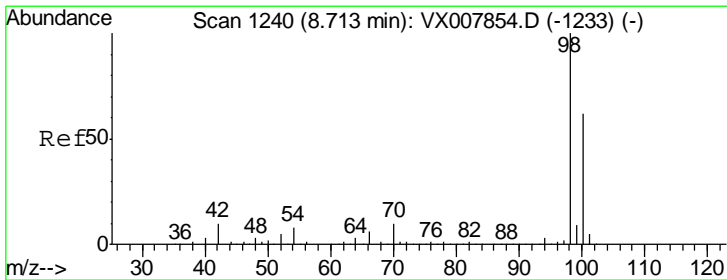
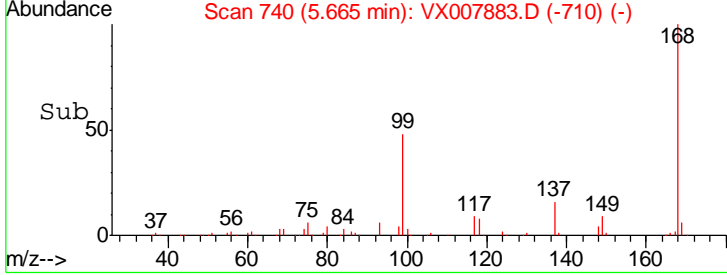
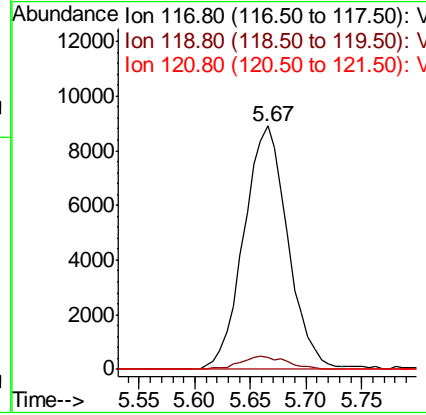
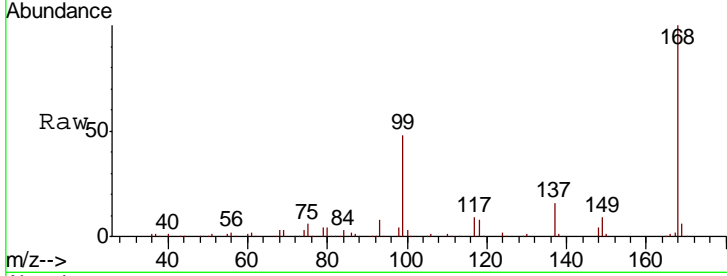




#38
 Carbon Tetrachloride
 Concen: 6.315 ug/l
 RT: 5.67 min Scan# 740
 Delta R.T. -0.12 min
 Lab File: VX007883.D
 Acq: 07 Mar 2019 14:58

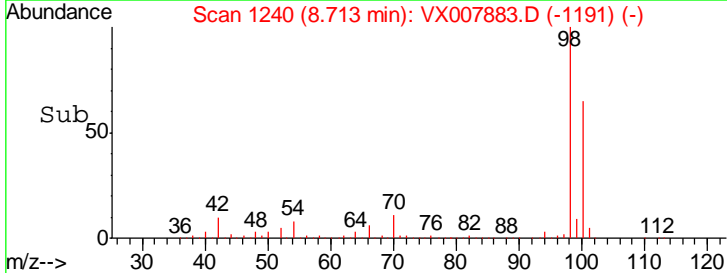
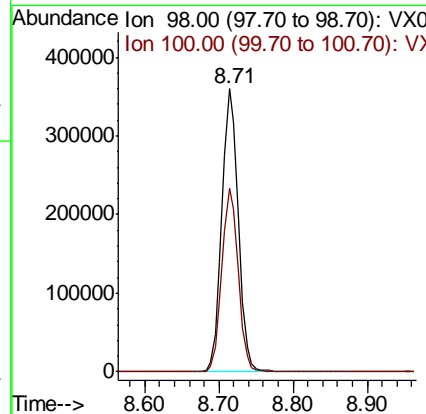
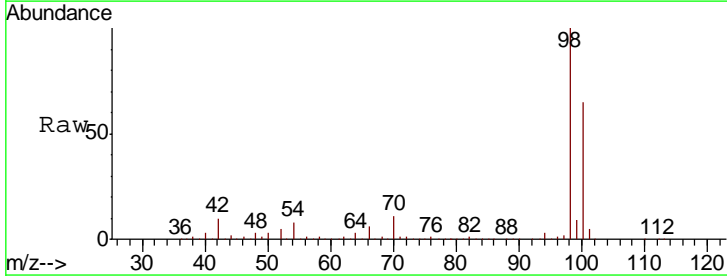
Instrument :
 MSVOA_X
ClientSampleId :
 OUTFALL001-190305

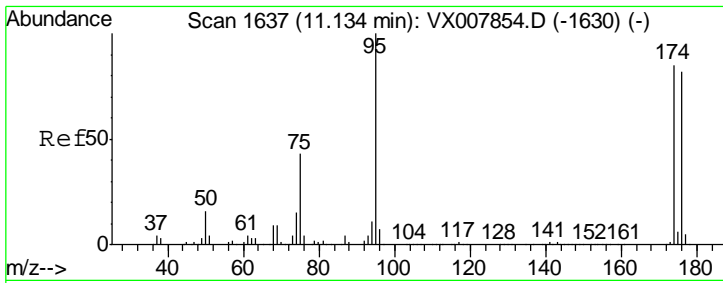
Tgt Ion	Resp	Lower	Upper
117	100		
119	4.7	76.2	114.2#
121	0.0	24.6	36.8#



#50
 Toluene-d8
 Concen: 51.836 ug/l
 RT: 8.71 min Scan# 1240
 Delta R.T. 0.00 min
 Lab File: VX007883.D
 Acq: 07 Mar 2019 14:58

Tgt Ion	Resp	Lower	Upper
98	100		
100	64.8	51.7	77.5

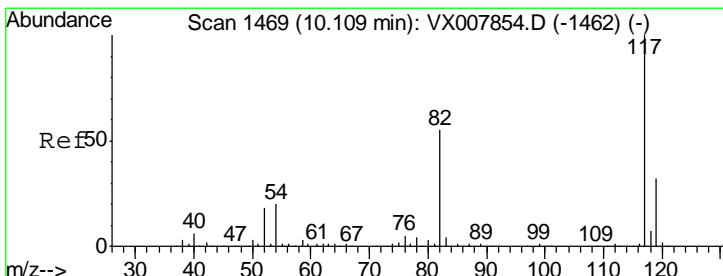
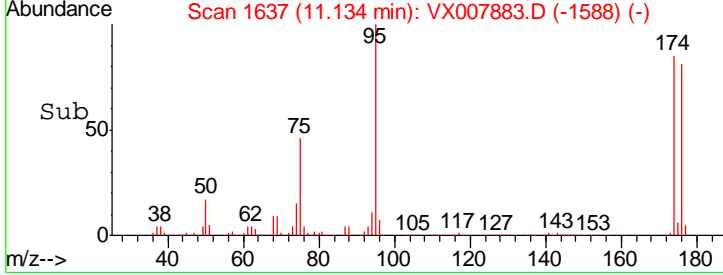
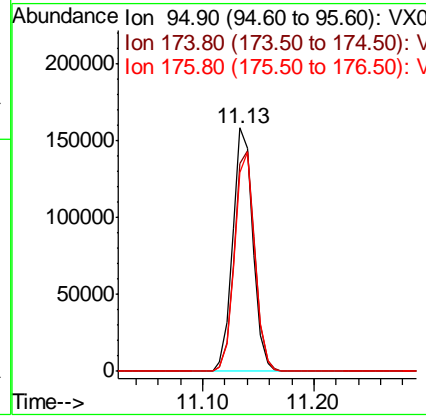
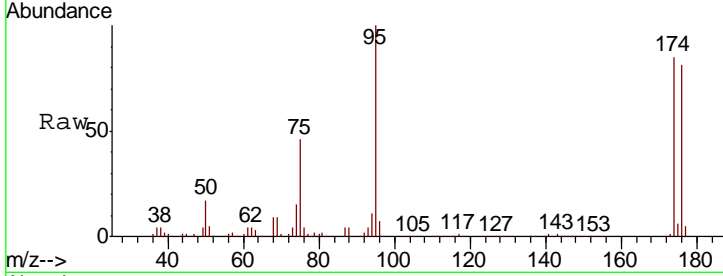




#62
 4-Bromofluorobenzene
 Concen: 53.547 ug/l
 RT: 11.13 min Scan# 1637
 Delta R.T. 0.00 min
 Lab File: VX007883.D
 Acq: 07 Mar 2019 14:58

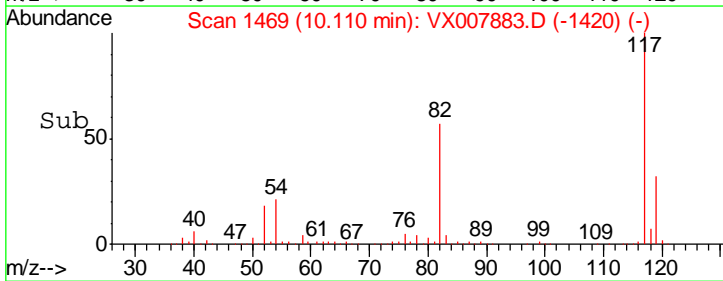
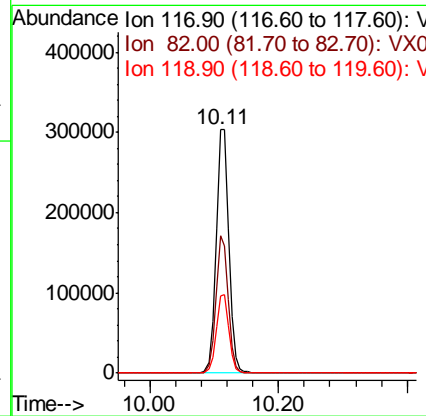
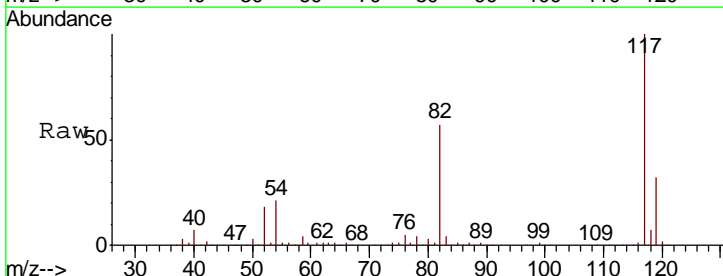
Instrument :
 MSVOA_X
 ClientSampled :
 OUTFALL001-190305

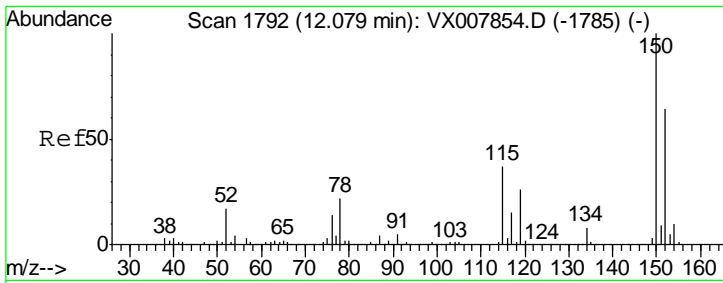
Tgt Ion	Resp	Lower	Upper
95	198286		
174	92.1	0.0	182.8
176	89.8	0.0	178.0



#63
 Chlorobenzene-d5
 Concen: 50.000 ug/l
 RT: 10.11 min Scan# 1469
 Delta R.T. 0.00 min
 Lab File: VX007883.D
 Acq: 07 Mar 2019 14:58

Tgt Ion	Resp	Lower	Upper
117	421576		
82	56.5	44.3	66.5
119	31.9	25.3	37.9

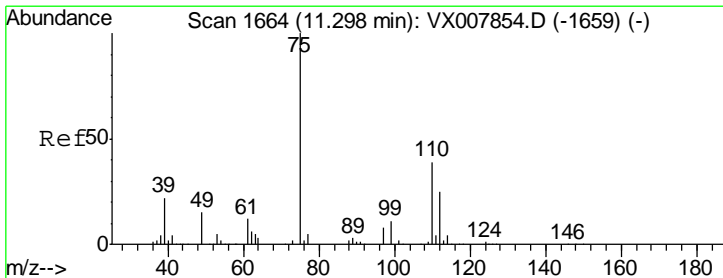
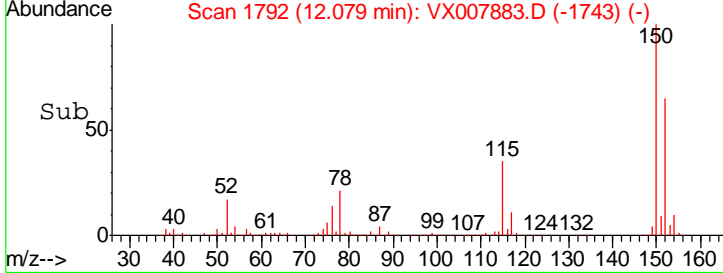
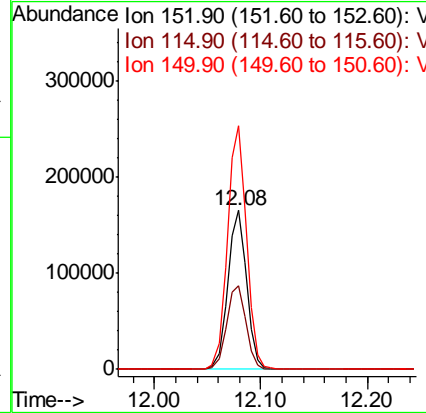
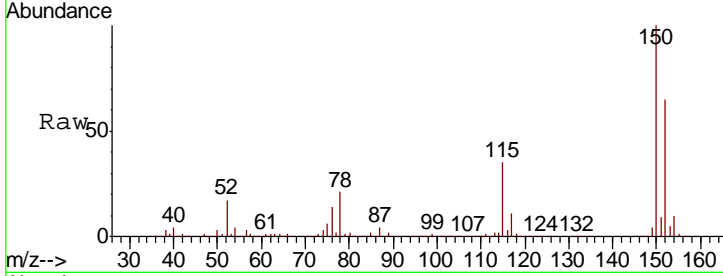




#72
 1,4-Dichlorobenzene-d4
 Concen: 50.000 ug/l
 RT: 12.08 min Scan# 1792
 Delta R.T. 0.00 min
 Lab File: VX007883.D
 Acq: 07 Mar 2019 14:58

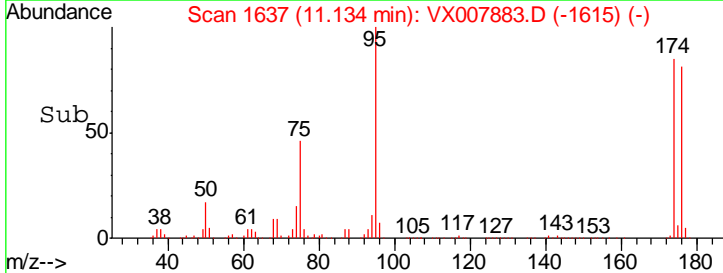
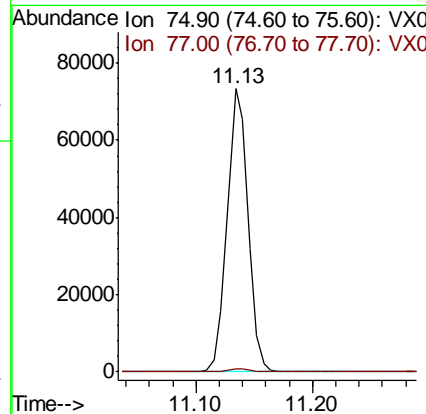
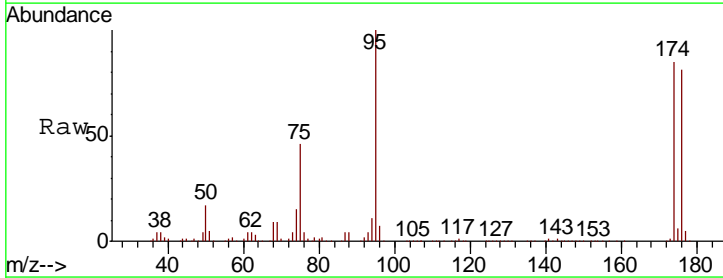
Instrument :
 MSVOA_X
 ClientSampled :
 OUTFALL001-190305

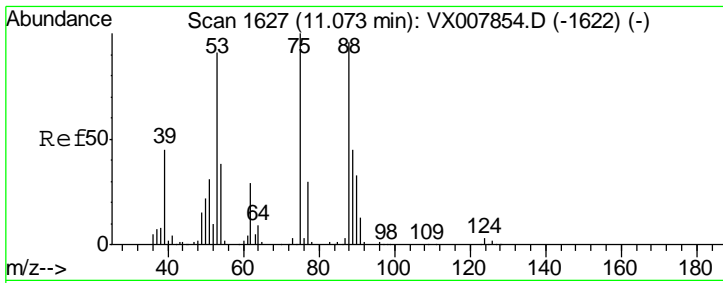
Tgt Ion	Resp	Lower	Upper
152	100		
115	54.5	38.6	115.7
150	155.3	0.0	348.4



#76
 1,2,3-Trichloropropane
 Concen: 21.234 ug/l
 RT: 11.13 min Scan# 1637
 Delta R.T. -0.16 min
 Lab File: VX007883.D
 Acq: 07 Mar 2019 14:58

Tgt Ion	Resp	Lower	Upper
75	100		
77	1.3	18.9	56.7#

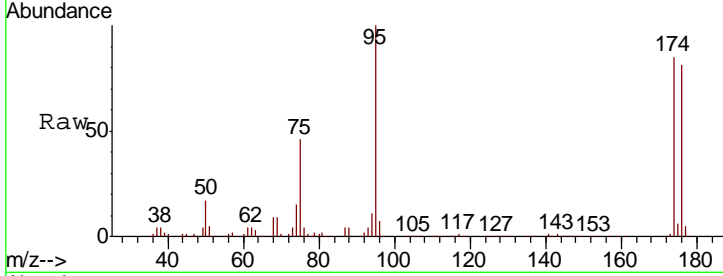




#81
 trans-1,4-Dichloro-2-butene
 Concen: 67.874 ug/l
 RT: 11.13 min Scan# 1637
 Delta R.T. 0.06 min
 Lab File: VX007883.D
 Acq: 07 Mar 2019 14:58

Instrument :
 MSVOA_X
 ClientSampleId :
 OUTFALL001-190305

Tgt Ion	Resp	Lower	Upper
75	100		
53	0.0	76.1	114.1#
89	0.0	36.3	54.5#



Abundance Ion 74.90 (74.60 to 75.60): VX0
 100000 Ion 53.00 (52.70 to 53.70): VX0
 Ion 88.90 (88.60 to 89.60): VX0

