

Data Path : Z:\VOASRV\HPCHEM1\MSVOA\_X\DATA\VX030719\  
 Data File : VX007914.D  
 Acq On : 08 Mar 2019 05:37  
 Operator : JC/SP  
 Sample : K1760-16  
 Misc : 5.0mL/MSVOA\_X/WATER  
 ALS Vial : 44 Sample Multiplier: 1

Instrument :  
 MSVOA\_X  
 ClientSampled :  
 Z2-11

Quant Time: Mar 08 08:23:33 2019  
 Quant Method : Z:\VOASRV\HPCHEM1\MSVOA\_X\METHOD\82X030619W.M  
 Quant Title : SW846 8260  
 QLast Update : Fri Mar 08 06:16:52 2019  
 Response via : Initial Calibration

Internal Standards	R.T.	QIon	Response	Conc	Units	Dev(Min)
1) Pentafluorobenzene	5.67	168	276739	50.00	ug/l	0.00
34) 1,4-Difluorobenzene	6.86	114	435551	50.00	ug/l	0.00
63) Chlorobenzene-d5	10.11	117	420749	50.00	ug/l	0.00
72) 1,4-Dichlorobenzene-d4	12.08	152	201821	50.00	ug/l	0.00

System Monitoring Compounds

33) 1,2-Dichloroethane-d4	6.07	65	154650	52.97	ug/l	0.00
Spiked Amount	50.000		Recovery	=	105.94%	
35) Dibromofluoromethane	5.51	113	142668	51.21	ug/l	0.00
Spiked Amount	50.000		Recovery	=	102.42%	
50) Toluene-d8	8.71	98	542185	52.99	ug/l	0.00
Spiked Amount	50.000		Recovery	=	105.98%	
62) 4-Bromofluorobenzene	11.13	95	198075	55.21	ug/l	0.00
Spiked Amount	50.000		Recovery	=	110.42%	

Target Compounds

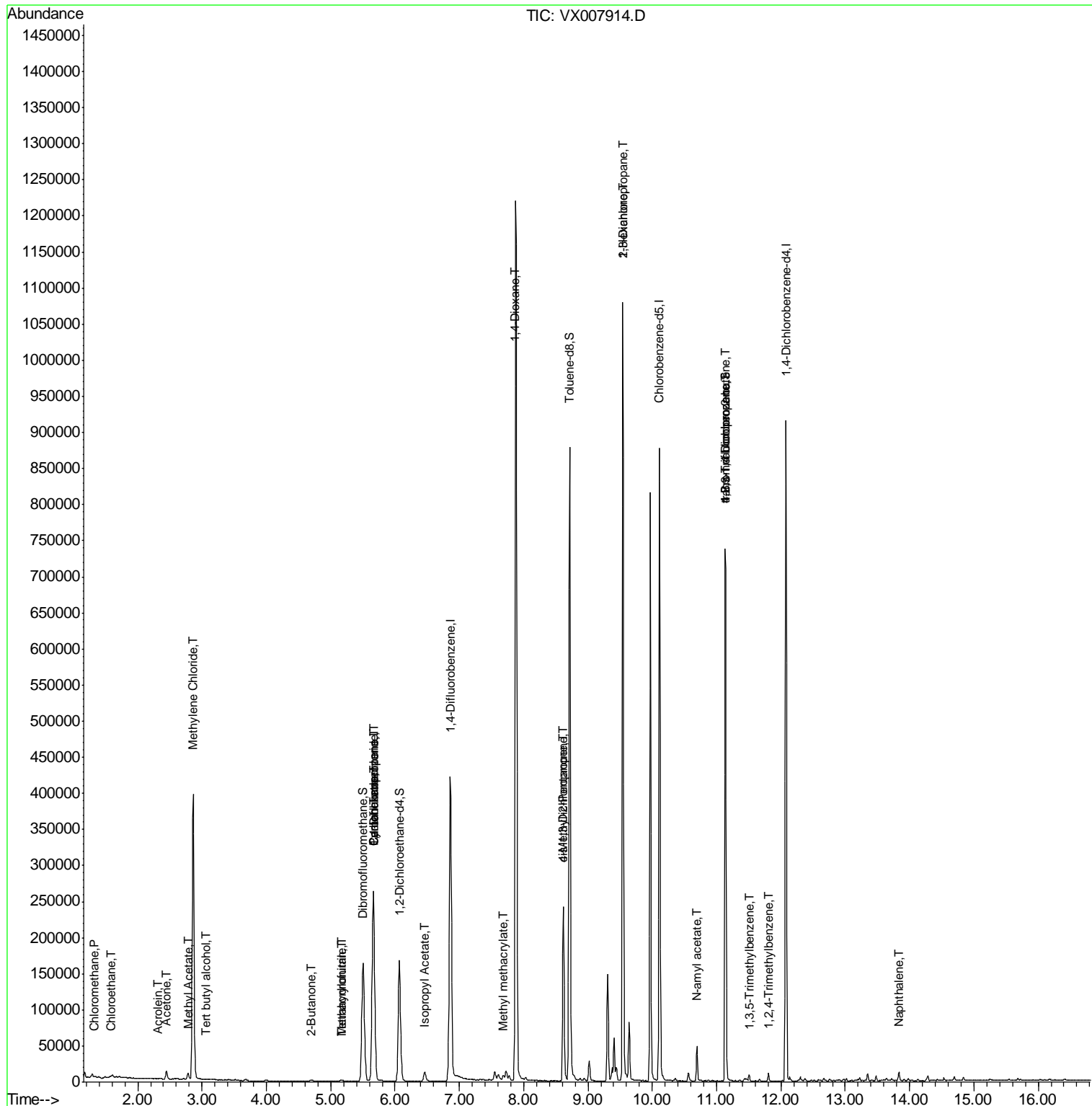
						Qvalue
3) Chloromethane	1.33	50	779	0.256	ug/l #	80
5) Bromomethane	1.65	94	49	Below Cal	#	2
6) Chloroethane	1.58	64	5276	2.623	ug/l #	47
11) Tert butyl alcohol	3.06	59	477	0.731	ug/l #	91
13) Acrolein	2.31	56	84	1.767	ug/l	86
16) Acetone	2.45	43	11897	7.041	ug/l	94
17) Carbon Disulfide	2.57	76	817	Below Cal	#	79
18) Methyl Acetate	2.78	43	10435	2.907	ug/l	98
20) Methylene Chloride	2.86	84	182433	67.839	ug/l	97
25) 2-Butanone	4.70	43	2530	1.058	ug/l #	89
29) Tetrahydrofuran	5.18	42	986	0.661	ug/l #	35
31) Cyclohexane	5.67	56	4358	0.972	ug/l #	1
36) 1,1-Dichloropropene	5.67	75	17475	4.431	ug/l #	48
38) Carbon Tetrachloride	5.67	117	23391	6.247	ug/l #	18
41) Methacrylonitrile	5.16	41	728	0.285	ug/l #	45
43) Isopropyl Acetate	6.46	43	16381	2.365	ug/l	99
48) Methyl methacrylate	7.68	41	8229	2.260	ug/l #	16
49) 1,4-Dioxane	7.87	88	174	2.326	ug/l #	1
51) 4-Methyl-2-Pentanone	8.62	43	77354	17.366	ug/l #	50
54) cis-1,3-Dichloropropene	8.62	75	38267	8.726	ug/l #	61
57) 1,3-Dichloropropane	9.54	76	8828	1.812	ug/l #	43
59) 2-Hexanone	9.54	43	122686	35.476	ug/l #	51
74) N-ethyl acetate	10.69	43	11133	1.787	ug/l #	54
76) 1,2,3-Trichloropropane	11.13	75	90057	21.265	ug/l #	39
80) 1,3,5-Trimethylbenzene	11.51	105	3914	0.348	ug/l	97
81) trans-1,4-Dichloro-2-buten	11.13	75	90057	67.972	ug/l #	12
84) 1,2,4-Trimethylbenzene	11.80	105	4898	0.425	ug/l	92
95) Naphthalene	13.83	128	8093	0.608	ug/l	99

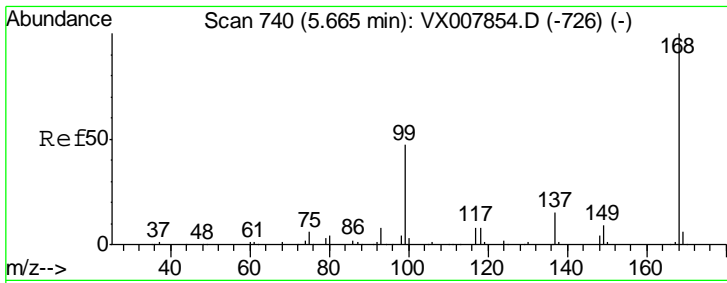
(#) = qualifier out of range (m) = manual integration (+) = signals summed

Data Path : Z:\VOASRV\HPCHEM1\MSVOA\_X\DATA\VX030719\  
 Data File : VX007914.D  
 Acq On : 08 Mar 2019 05:37  
 Operator : JC/SP  
 Sample : K1760-16  
 Misc : 5.0mL/MSVOA\_X/WATER  
 ALS Vial : 44 Sample Multiplier: 1

Instrument :  
 MSVOA\_X  
 Client Sampled :  
 Z2-11

Quant Time: Mar 08 08:23:33 2019  
 Quant Method : Z:\VOASRV\HPCHEM1\MSVOA\_X\METHOD\82X030619W.M  
 Quant Title : SW846 8260  
 QLast Update : Fri Mar 08 06:16:52 2019  
 Response via : Initial Calibration

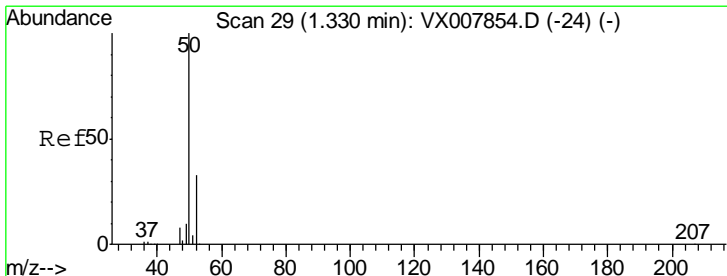
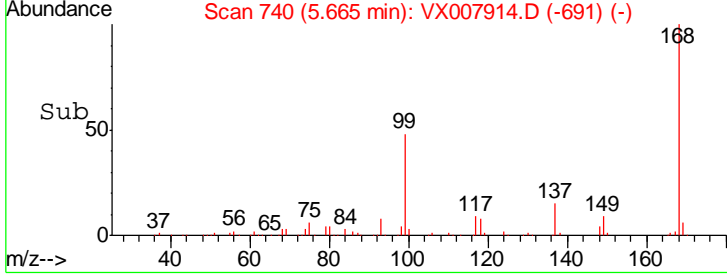
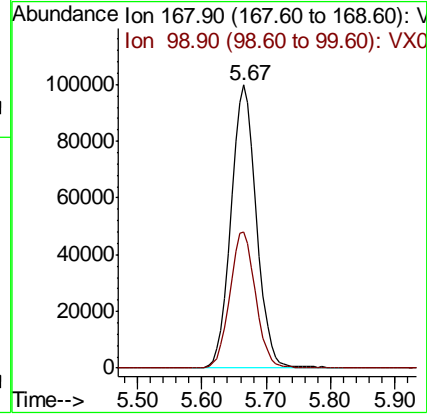
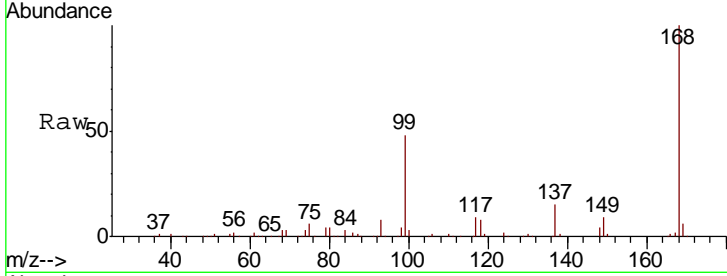




#1  
 Pentafluorobenzene  
 Concen: 50.000 ug/l  
 RT: 5.67 min Scan# 740  
 Delta R.T. 0.00 min  
 Lab File: VX007914.D  
 Acq: 08 Mar 2019 05:37

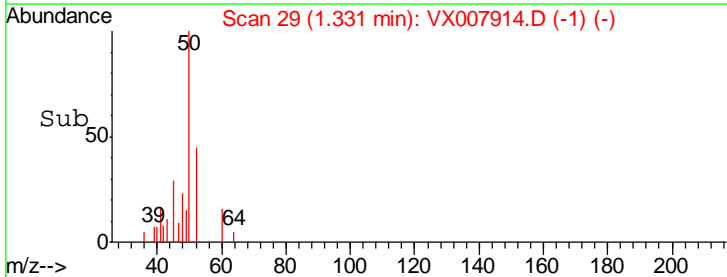
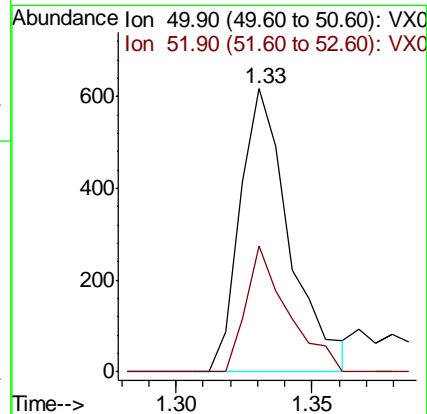
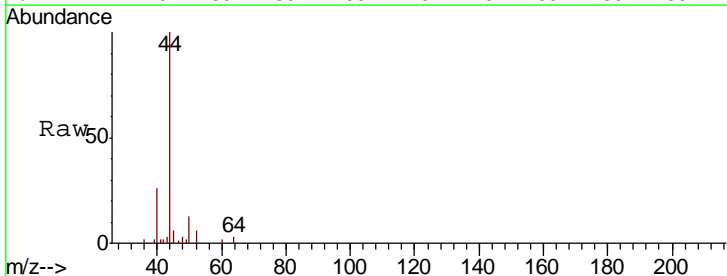
Instrument :  
 MSVOA\_X  
 ClientSampled :  
 Z2-11

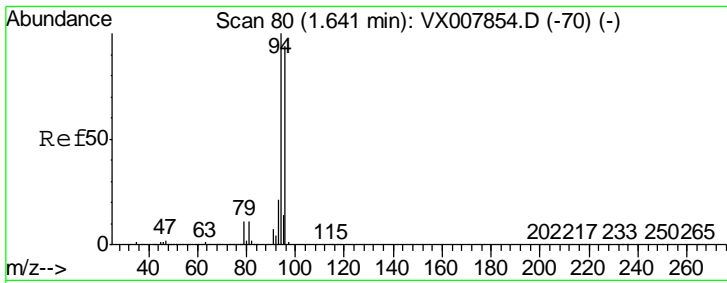
Tgt Ion: 168 Resp: 276739  
 Ion Ratio Lower Upper  
 168 100  
 99 48.0 37.6 56.4



#3  
 Chloromethane  
 Concen: 0.256 ug/l  
 RT: 1.33 min Scan# 29  
 Delta R.T. 0.00 min  
 Lab File: VX007914.D  
 Acq: 08 Mar 2019 05:37

Tgt Ion: 50 Resp: 779  
 Ion Ratio Lower Upper  
 50 100  
 52 44.6 26.5 39.7#

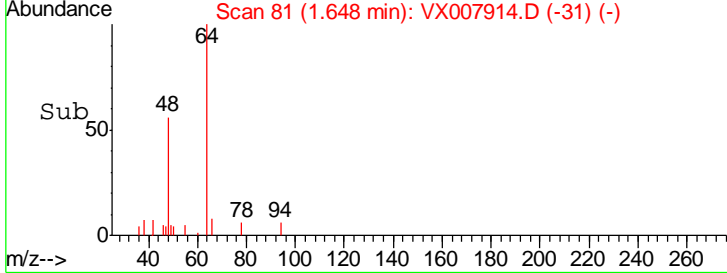
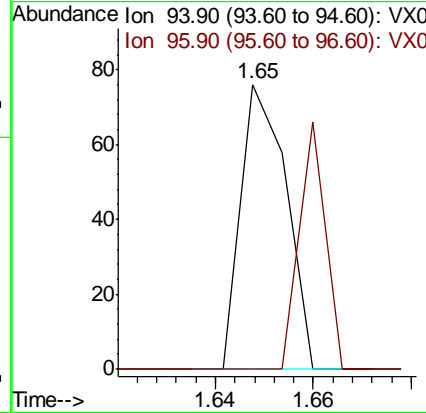
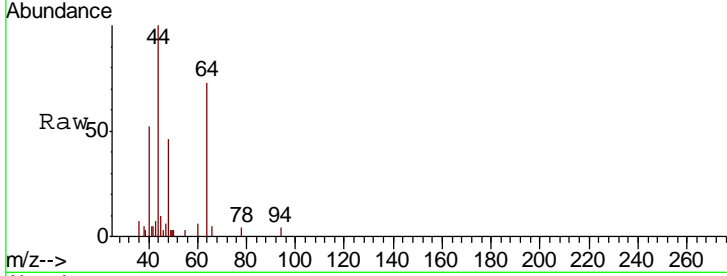




#5  
 Bromomethane  
 Concen: Below Cal  
 RT: 1.65 min Scan# 81  
 Delta R.T. 0.01 min  
 Lab File: VX007914.D  
 Acq: 08 Mar 2019 05:37

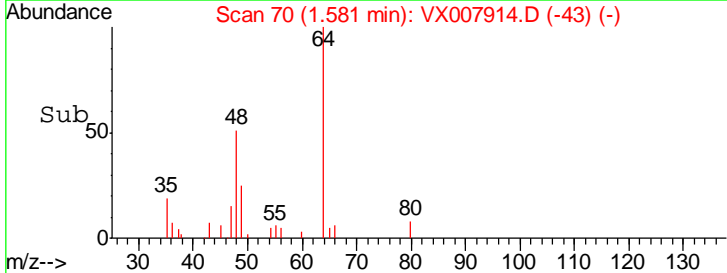
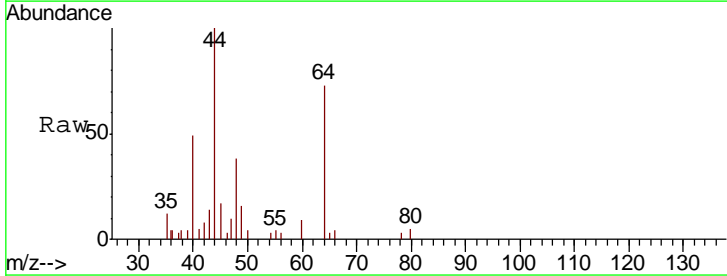
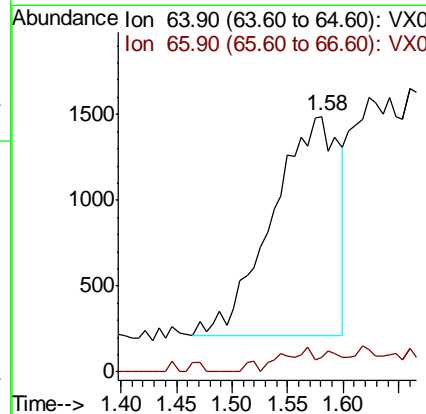
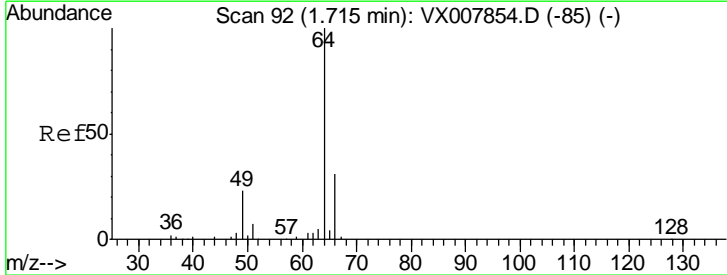
Instrument :  
 MSVOA\_X  
 ClientSampled :  
 Z2-11

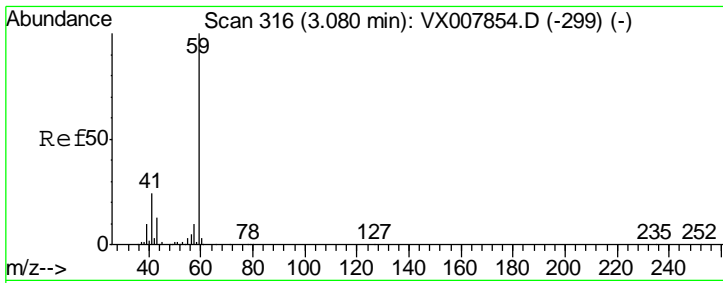
Tgt Ion	Resp	Lower	Upper
94	100		
96	0.0	75.5	113.3#



#6  
 Chloroethane  
 Concen: 2.623 ug/l  
 RT: 1.58 min Scan# 70  
 Delta R.T. -0.13 min  
 Lab File: VX007914.D  
 Acq: 08 Mar 2019 05:37

Tgt Ion	Resp	Lower	Upper
64	100		
66	2.0	25.2	37.8#

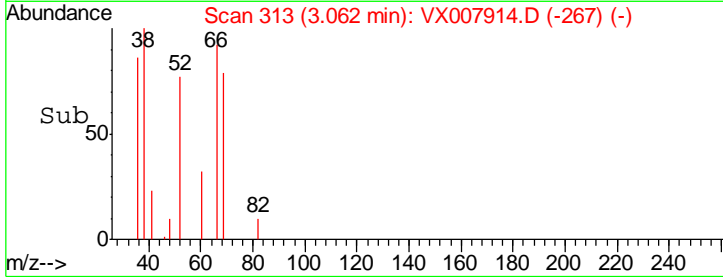
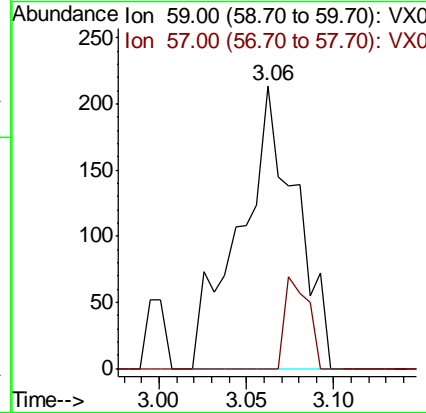
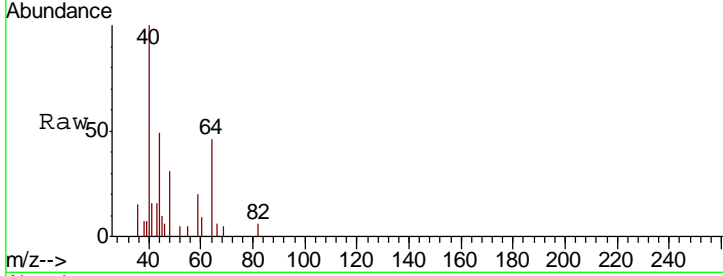




#11  
 Tert butyl alcohol  
 Concen: 0.731 ug/l  
 RT: 3.06 min Scan# 313  
 Delta R.T. -0.02 min  
 Lab File: VX007914.D  
 Acq: 08 Mar 2019 05:37

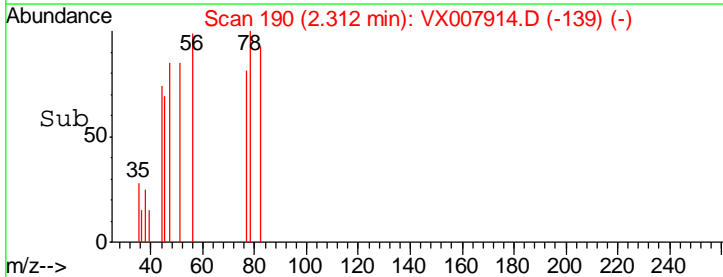
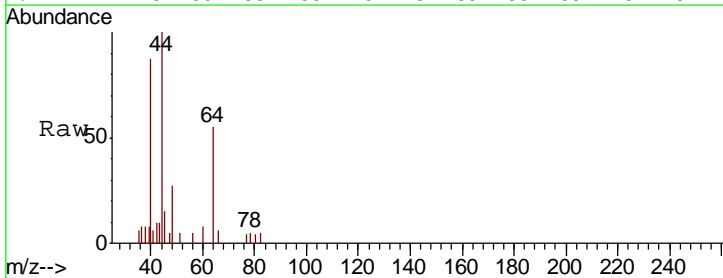
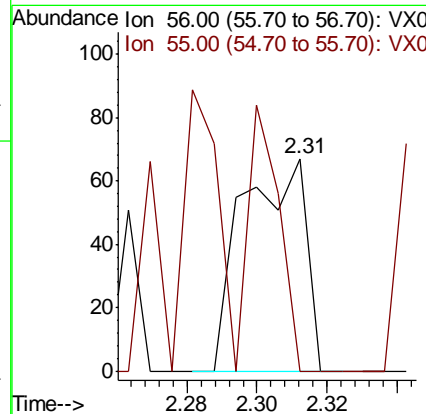
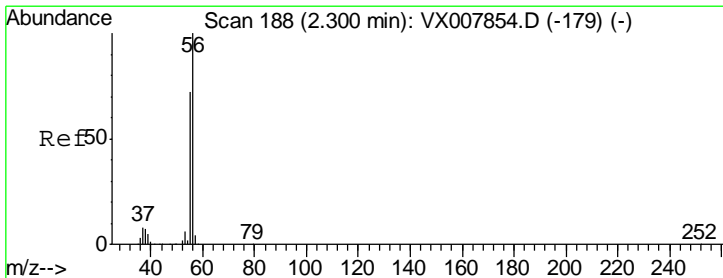
Instrument :  
 MSVOA\_X  
 ClientSampled :  
 Z2-11

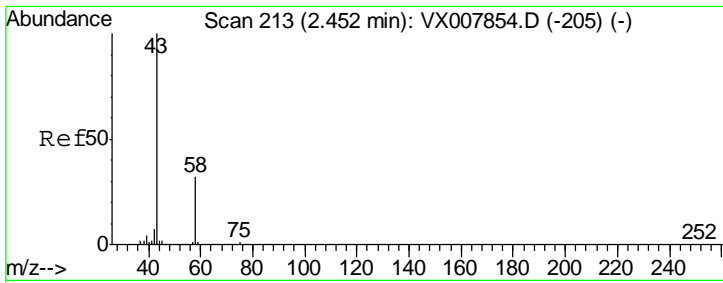
Tgt Ion: 59 Resp: 477  
 Ion Ratio Lower Upper  
 59 100  
 57 13.4 8.2 12.2#



#13  
 Acrolein  
 Concen: 1.767 ug/l  
 RT: 2.31 min Scan# 190  
 Delta R.T. 0.01 min  
 Lab File: VX007914.D  
 Acq: 08 Mar 2019 05:37

Tgt Ion: 56 Resp: 84  
 Ion Ratio Lower Upper  
 56 100  
 55 60.7 57.8 86.6

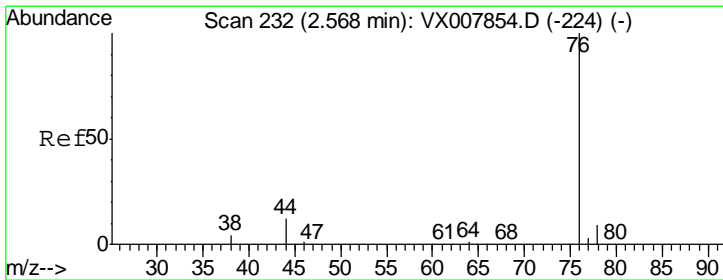
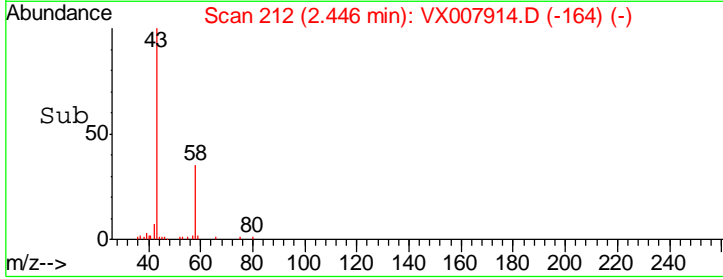
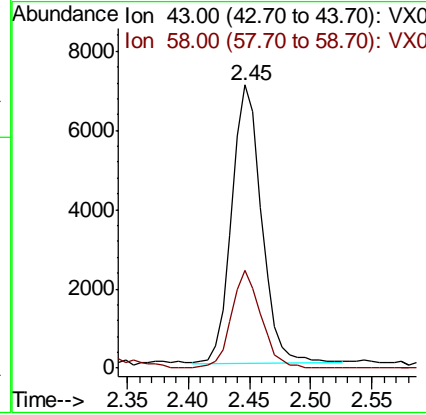
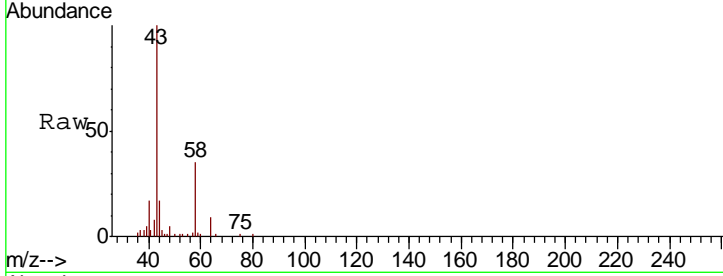




#16  
 Acetone  
 Concen: 7.041 ug/l  
 RT: 2.45 min Scan# 212  
 Delta R.T. -0.01 min  
 Lab File: VX007914.D  
 Acq: 08 Mar 2019 05:37

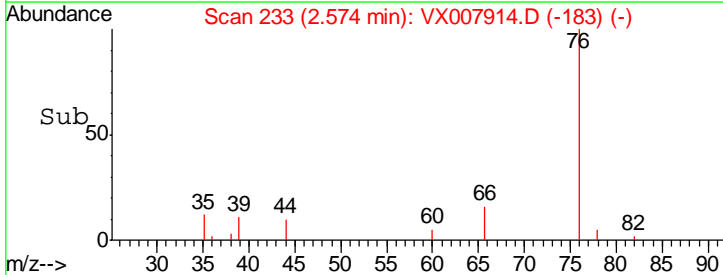
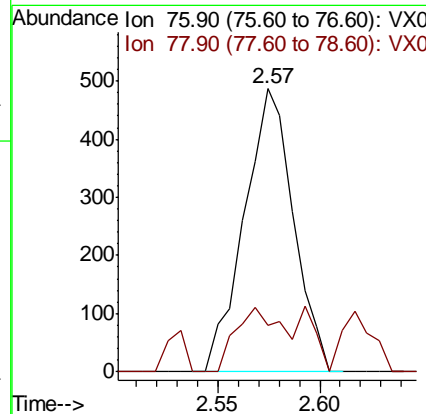
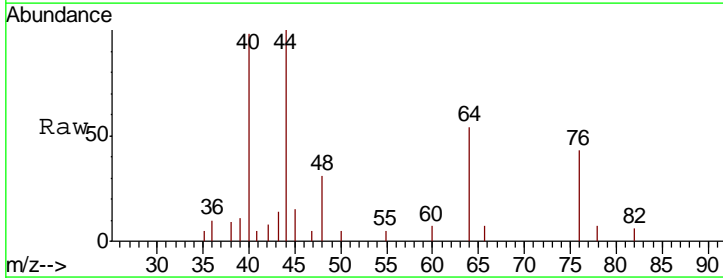
Instrument :  
 MSVOA\_X  
 ClientSampled :  
 Z2-11

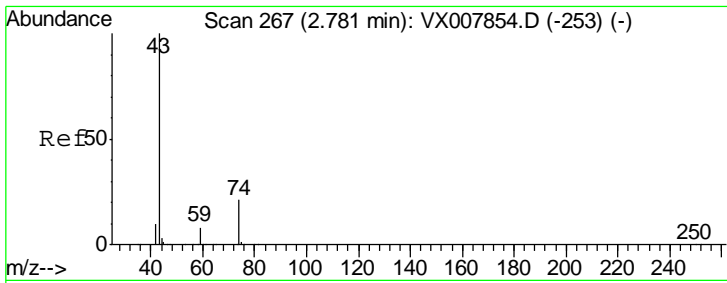
Tgt Ion: 43 Resp: 11897  
 Ion Ratio Lower Upper  
 43 100  
 58 35.2 25.5 38.3



#17  
 Carbon Disulfide  
 Concen: Below Cal  
 RT: 2.57 min Scan# 233  
 Delta R.T. 0.01 min  
 Lab File: VX007914.D  
 Acq: 08 Mar 2019 05:37

Tgt Ion: 76 Resp: 817  
 Ion Ratio Lower Upper  
 76 100  
 78 16.4 7.2 10.8#

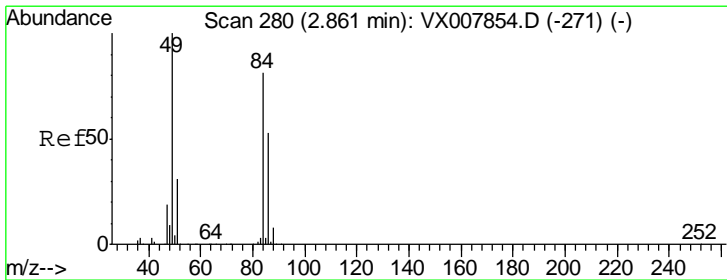
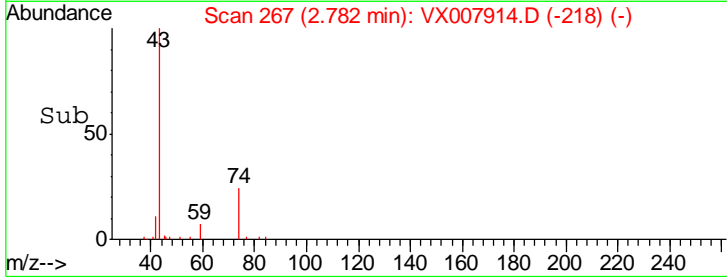
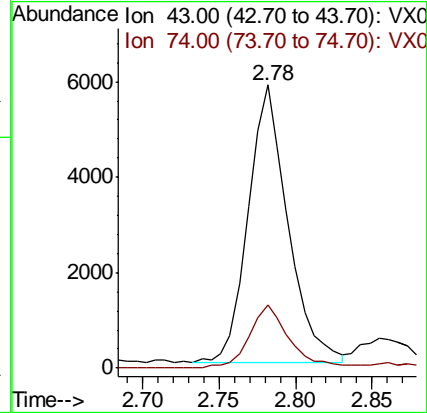
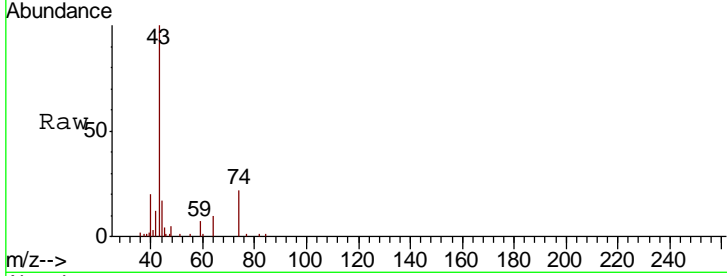




#18  
 Methyl Acetate  
 Concen: 2.907 ug/l  
 RT: 2.78 min Scan# 267  
 Delta R.T. 0.00 min  
 Lab File: VX007914.D  
 Acq: 08 Mar 2019 05:37

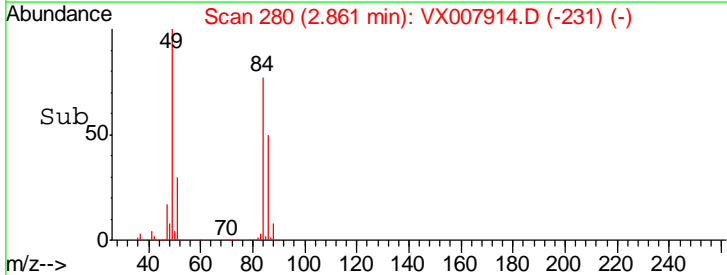
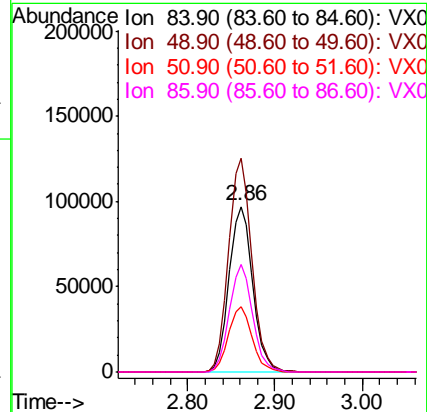
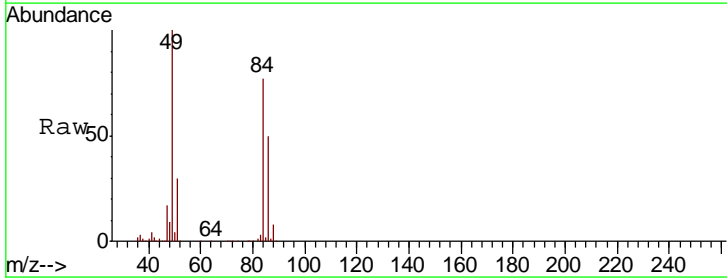
Instrument :  
 MSVOA\_X  
 ClientSampled :  
 Z2-11

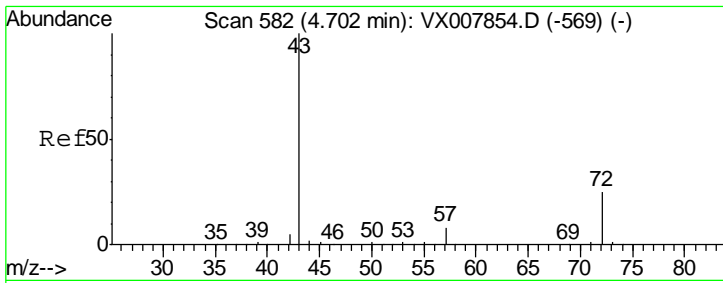
Tgt Ion	Resp	Lower	Upper
43	10435		
74	23.2	17.8	26.6



#20  
 Methylene Chloride  
 Concen: 67.839 ug/l  
 RT: 2.86 min Scan# 280  
 Delta R.T. 0.00 min  
 Lab File: VX007914.D  
 Acq: 08 Mar 2019 05:37

Tgt Ion	Resp	Lower	Upper
84	182433		
49	129.1	99.3	148.9
51	39.2	31.3	46.9
86	64.9	52.6	79.0

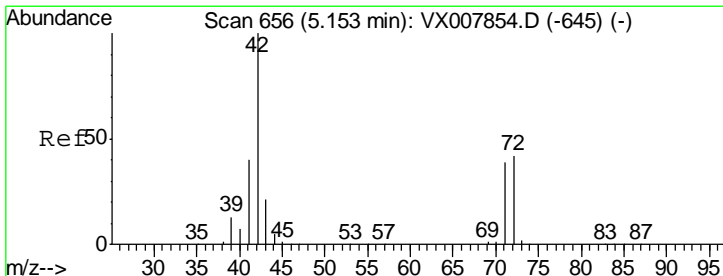
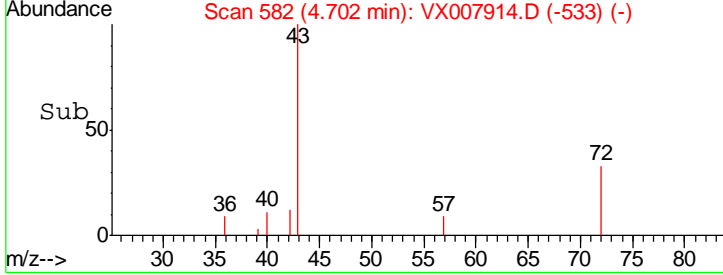
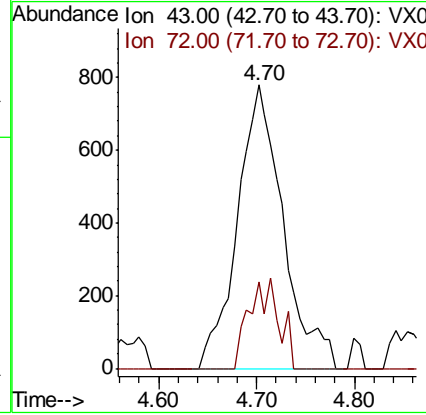
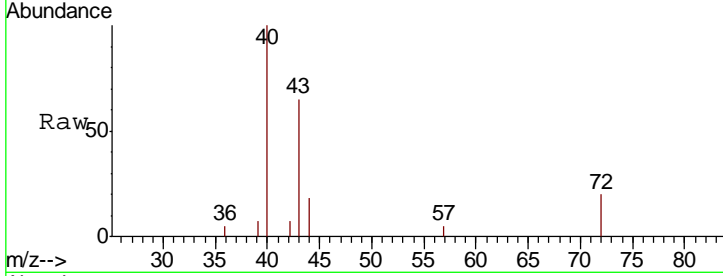




#25  
 2-Butanone  
 Concen: 1.058 ug/l  
 RT: 4.70 min Scan# 582  
 Delta R.T. 0.00 min  
 Lab File: VX007914.D  
 Acq: 08 Mar 2019 05:37

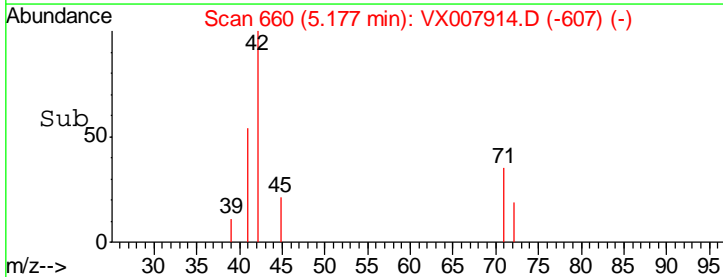
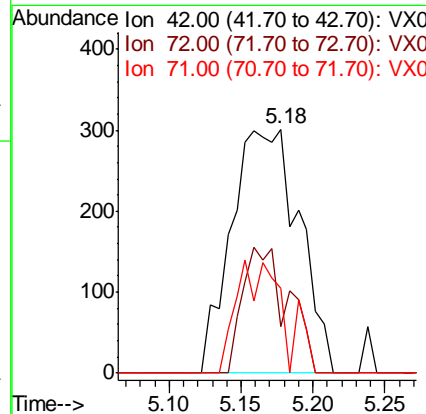
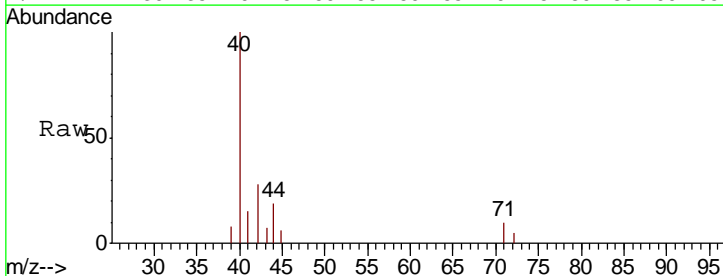
Instrument :  
 MSVOA\_X  
 ClientSampled :  
 Z2-11

Tgt Ion	Resp	Lower	Upper
43	100		
72	30.6	19.9	29.9#

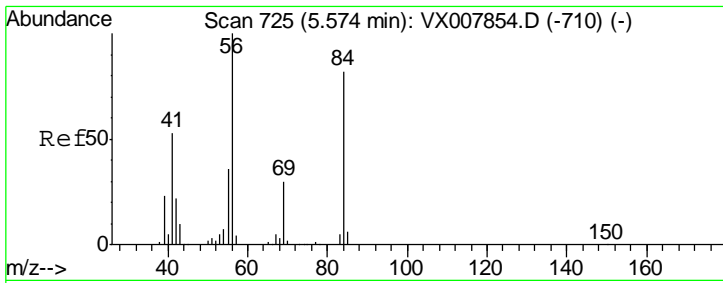


#29  
 Tetrahydrofuran  
 Concen: 0.661 ug/l  
 RT: 5.18 min Scan# 660  
 Delta R.T. 0.02 min  
 Lab File: VX007914.D  
 Acq: 08 Mar 2019 05:37

Tgt Ion	Resp	Lower	Upper
42	100		
72	0.0	33.8	50.6#
71	0.0	31.5	47.3#



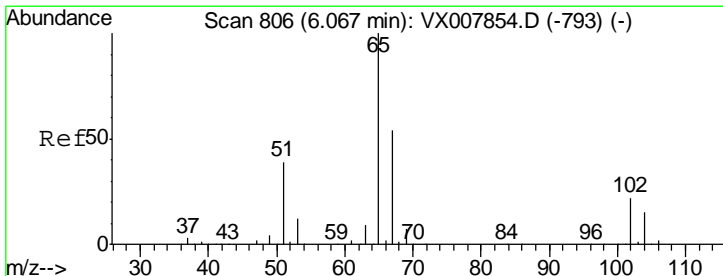
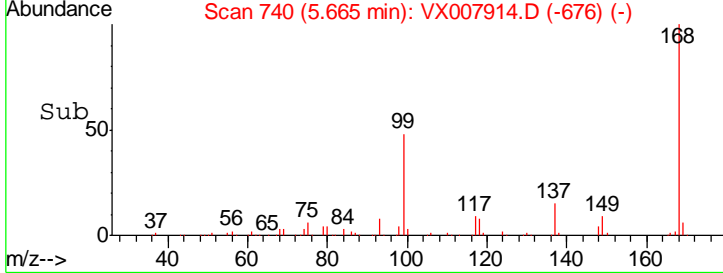
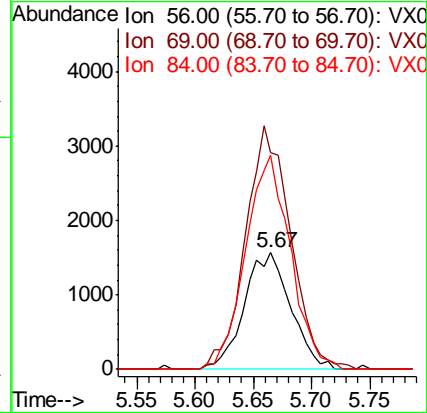
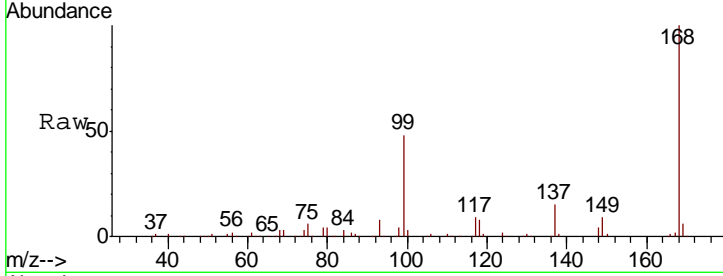




#31  
 Cyclohexane  
 Concen: 0.972 ug/l  
 RT: 5.67 min Scan# 740  
 Delta R.T. 0.09 min  
 Lab File: VX007914.D  
 Acq: 08 Mar 2019 05:37

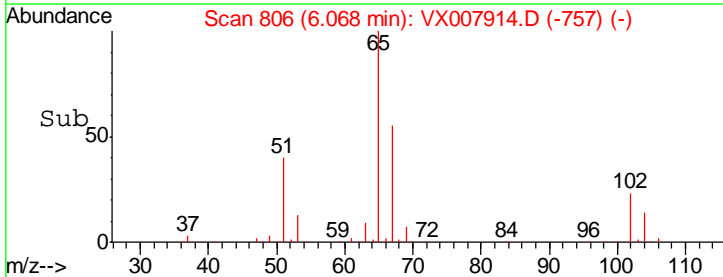
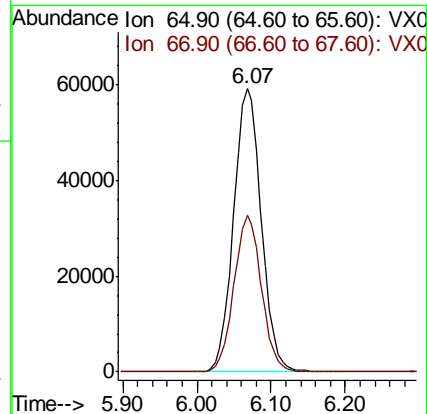
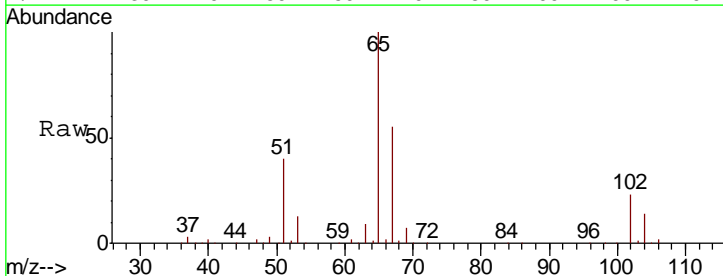
Instrument :  
 MSVOA\_X  
 ClientSampled :  
 Z2-11

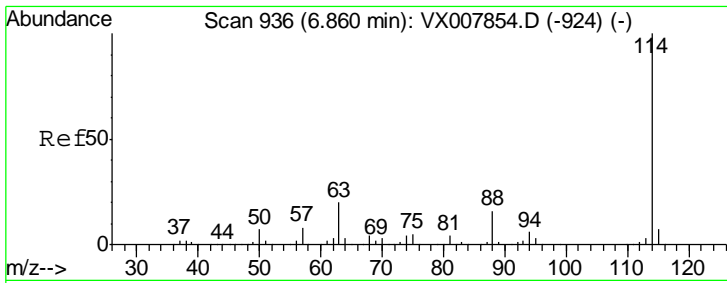
Tgt Ion	Resp	Lower	Upper
56	100		
69	186.0	24.0	36.0#
84	183.3	65.3	97.9#



#33  
 1,2-Dichloroethane-d4  
 Concen: 52.974 ug/l  
 RT: 6.07 min Scan# 806  
 Delta R.T. 0.00 min  
 Lab File: VX007914.D  
 Acq: 08 Mar 2019 05:37

Tgt Ion	Resp	Lower	Upper
65	100		
67	54.7	0.0	110.0

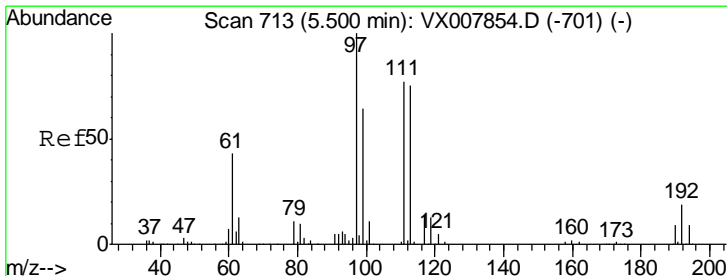
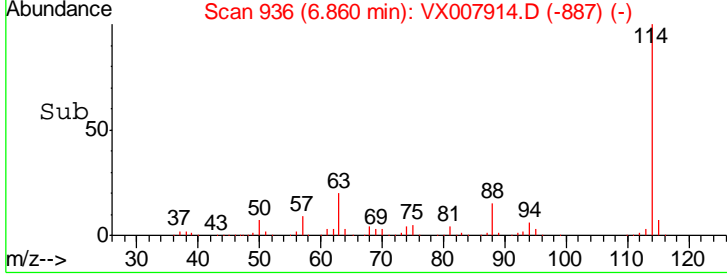
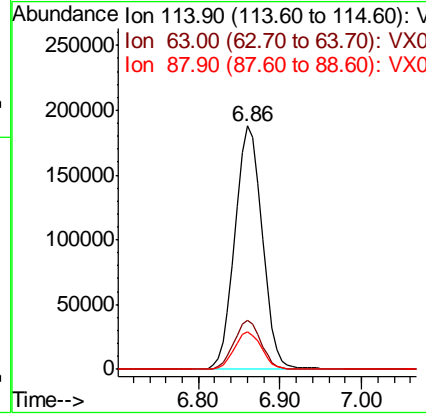
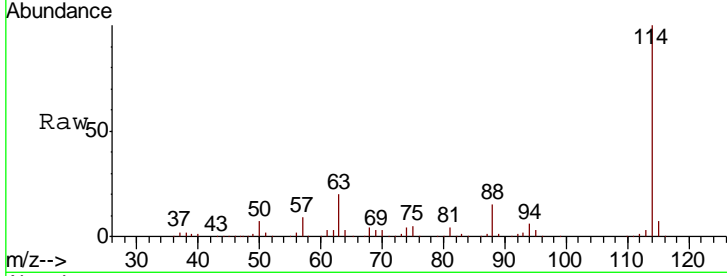




#34  
 1,4-Difluorobenzene  
 Concen: 50.000 ug/l  
 RT: 6.86 min Scan# 936  
 Delta R.T. 0.00 min  
 Lab File: VX007914.D  
 Acq: 08 Mar 2019 05:37

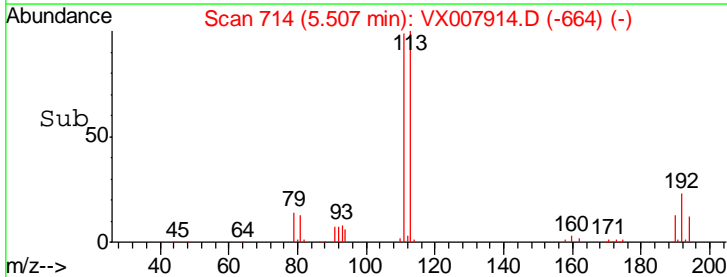
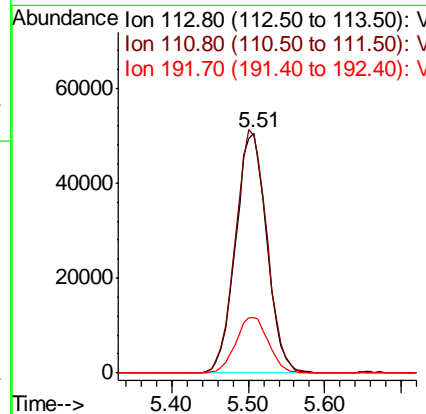
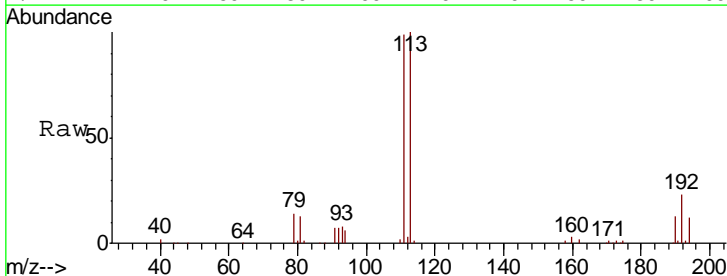
Instrument :  
 MSVOA\_X  
 ClientSampled :  
 Z2-11

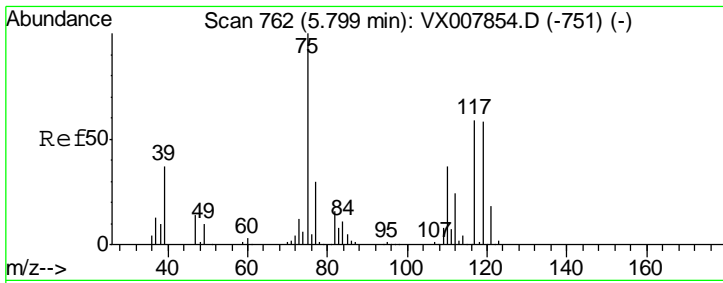
Tgt Ion	Resp	Lower	Upper
114	100		
63	20.0	0.0	39.8
88	15.4	0.0	31.4



#35  
 Dibromofluoromethane  
 Concen: 51.208 ug/l  
 RT: 5.51 min Scan# 714  
 Delta R.T. 0.01 min  
 Lab File: VX007914.D  
 Acq: 08 Mar 2019 05:37

Tgt Ion	Resp	Lower	Upper
113	100		
111	102.2	81.4	122.0
192	24.5	19.4	29.0

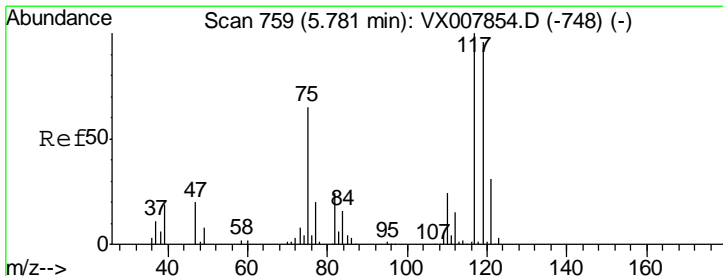
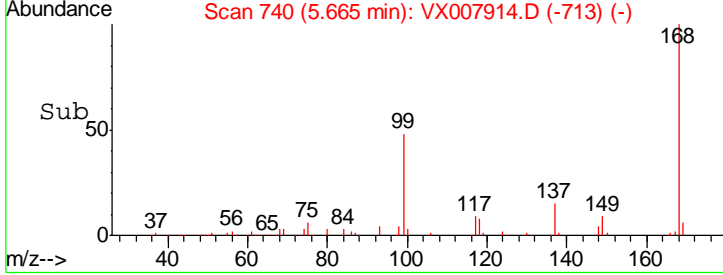
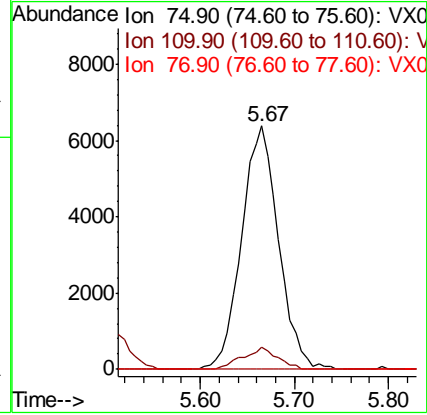
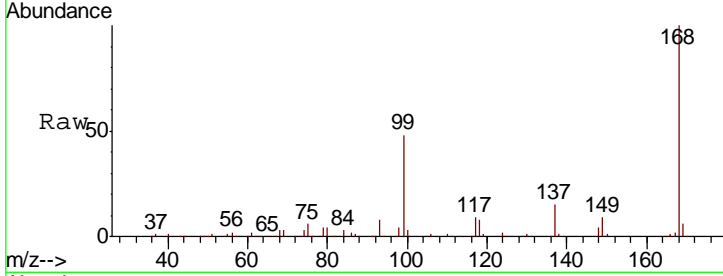




#36  
 1,1-Dichloropropene  
 Concen: 4.431 ug/l  
 RT: 5.67 min Scan# 740  
 Delta R.T. -0.13 min  
 Lab File: VX007914.D  
 Acq: 08 Mar 2019 05:37

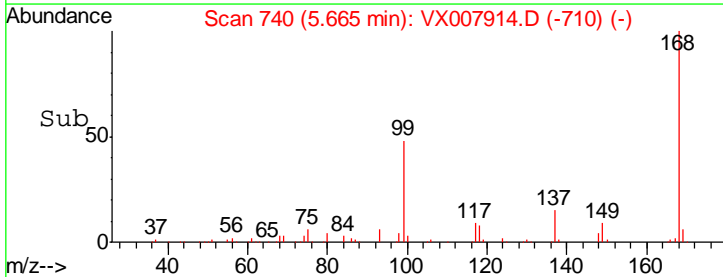
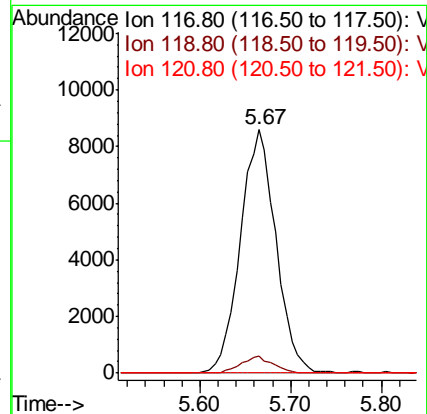
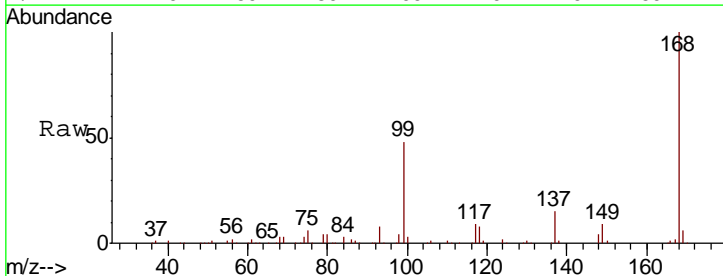
Instrument :  
 MSVOA\_X  
 ClientSampled :  
 Z2-11

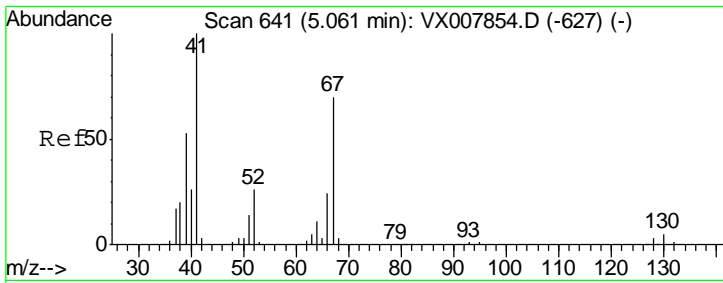
Tgt Ion	Resp	Lower	Upper
75	17475		
110	8.4	18.4	55.0#
77	0.0	25.0	37.4#



#38  
 Carbon Tetrachloride  
 Concen: 6.247 ug/l  
 RT: 5.67 min Scan# 740  
 Delta R.T. -0.12 min  
 Lab File: VX007914.D  
 Acq: 08 Mar 2019 05:37

Tgt Ion	Resp	Lower	Upper
117	23391		
119	7.2	76.2	114.2#
121	0.0	24.6	36.8#

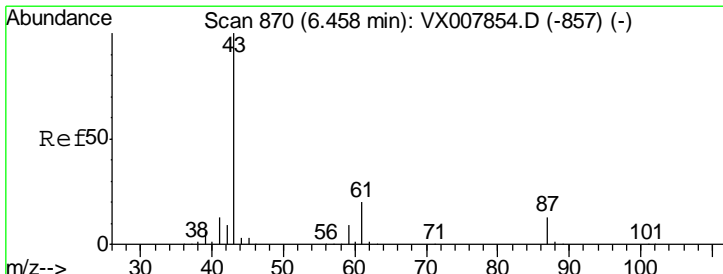
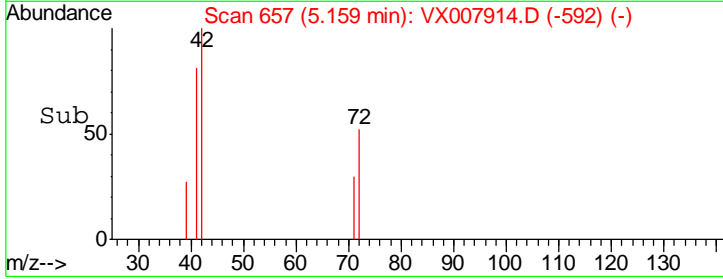
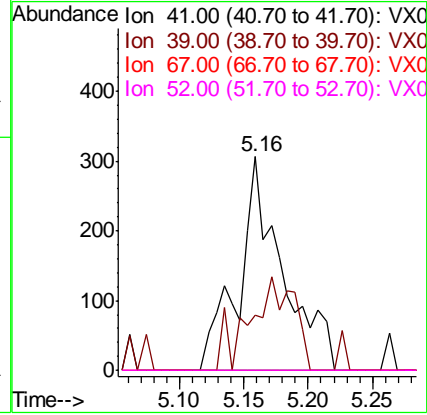
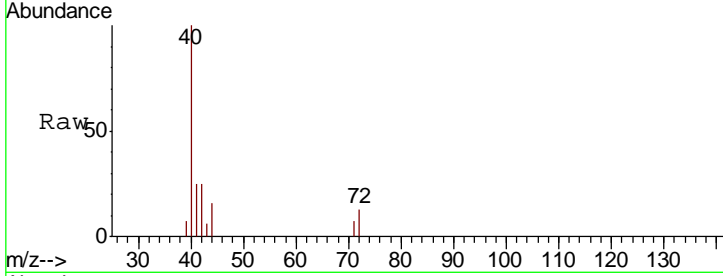




#41  
 Methacrylonitrile  
 Concen: 0.285 ug/l  
 RT: 5.16 min Scan# 657  
 Delta R.T. 0.10 min  
 Lab File: VX007914.D  
 Acq: 08 Mar 2019 05:37

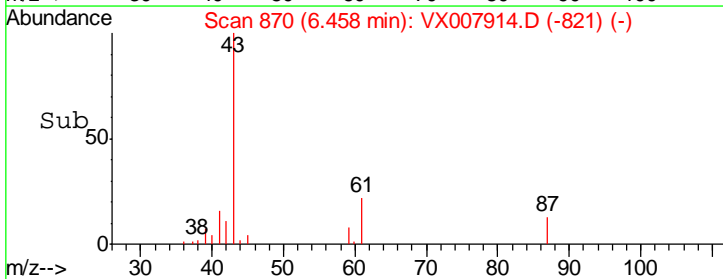
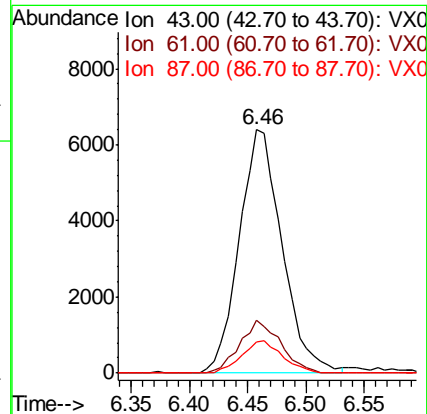
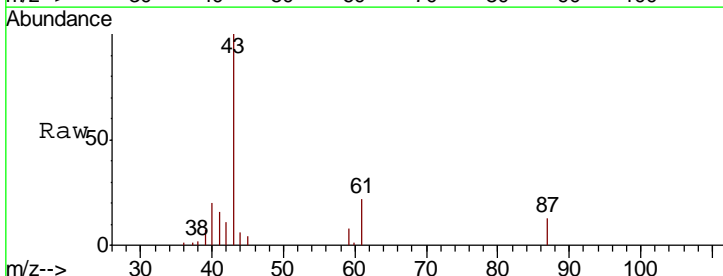
Instrument :  
 MSVOA\_X  
 ClientSampled :  
 Z2-11

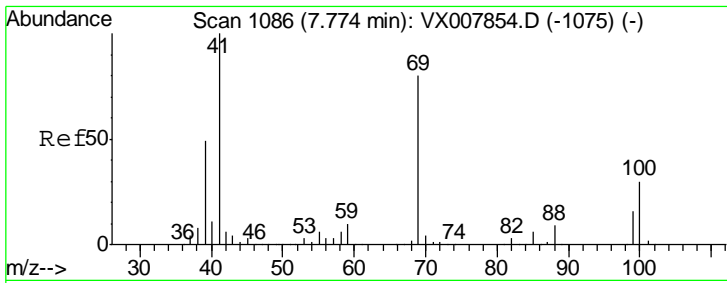
Tgt Ion	Resp	Lower	Upper
41	100		
39	40.2	41.6	62.4#
67	0.0	55.8	83.6#
52	0.0	21.7	32.5#



#43  
 Isopropyl Acetate  
 Concen: 2.365 ug/l  
 RT: 6.46 min Scan# 870  
 Delta R.T. 0.00 min  
 Lab File: VX007914.D  
 Acq: 08 Mar 2019 05:37

Tgt Ion	Resp	Lower	Upper
43	100		
61	20.6	16.3	24.5
87	12.7	10.5	15.7

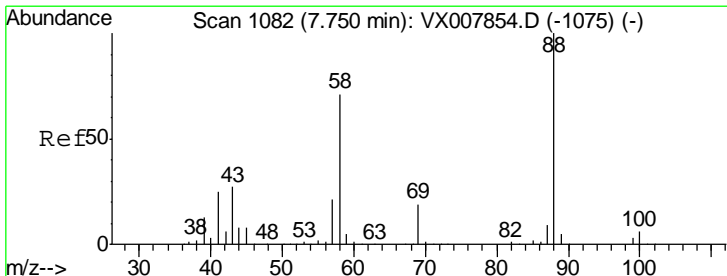
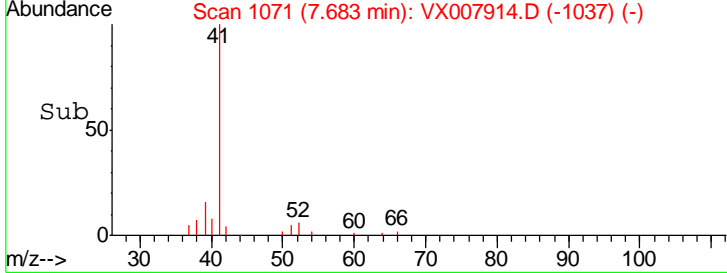
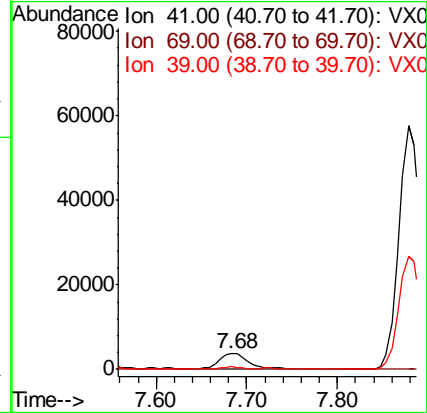
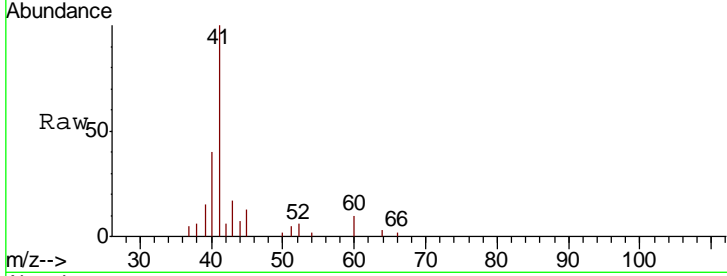




#48  
 Methyl methacrylate  
 Concen: 2.260 ug/l  
 RT: 7.68 min Scan# 1071  
 Delta R.T. -0.09 min  
 Lab File: VX007914.D  
 Acq: 08 Mar 2019 05:37

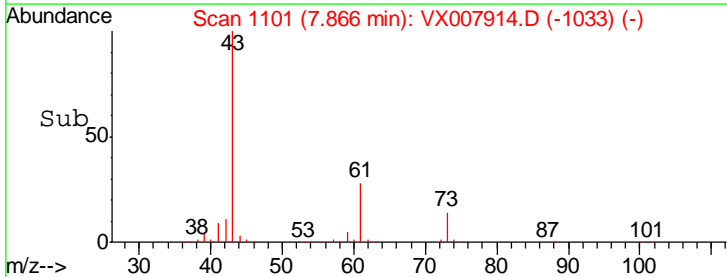
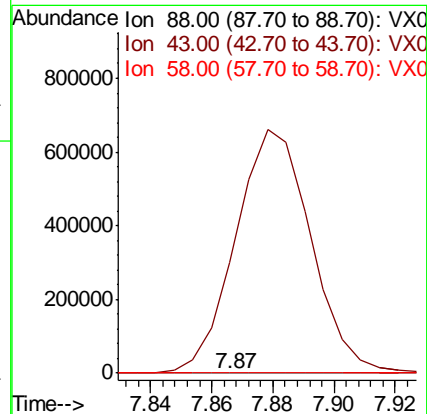
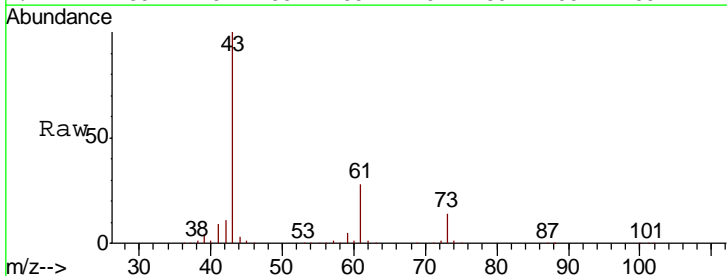
Instrument : MSVOA\_X  
 ClientSampled : Z2-11

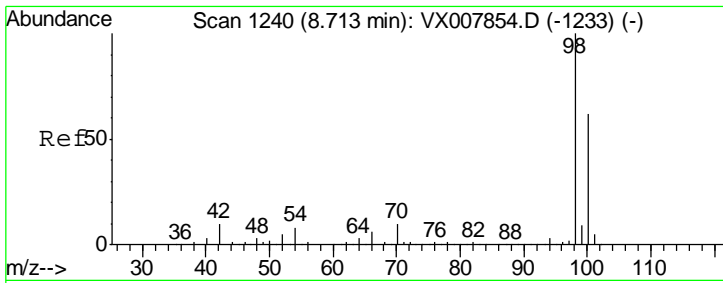
Tgt Ion	Resp	Lower	Upper
41	100		
69	0.0	65.2	97.8#
39	0.0	39.4	59.2#



#49  
 1,4-Dioxane  
 Concen: 2.326 ug/l  
 RT: 7.87 min Scan# 1101  
 Delta R.T. 0.12 min  
 Lab File: VX007914.D  
 Acq: 08 Mar 2019 05:37

Tgt Ion	Resp	Lower	Upper
88	100		
43	655506.3	25.1	37.7#
58	2853.4	57.8	86.6#

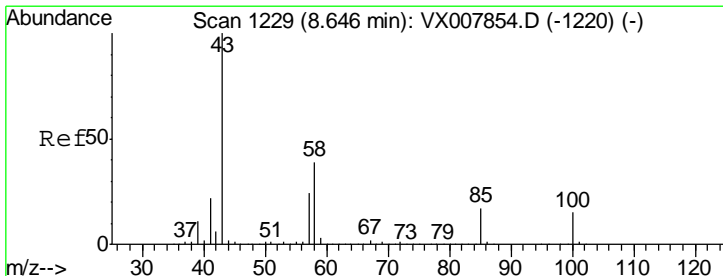
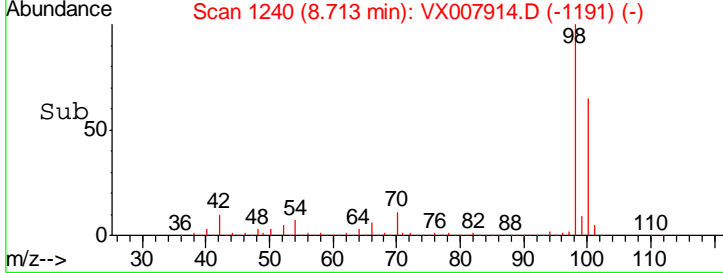
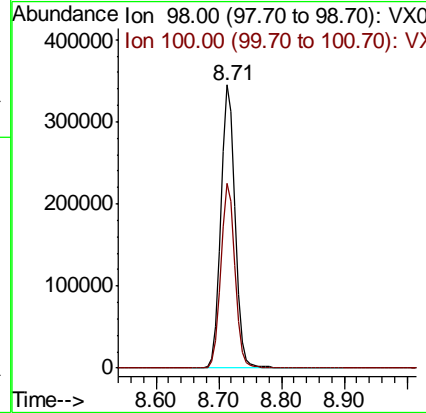
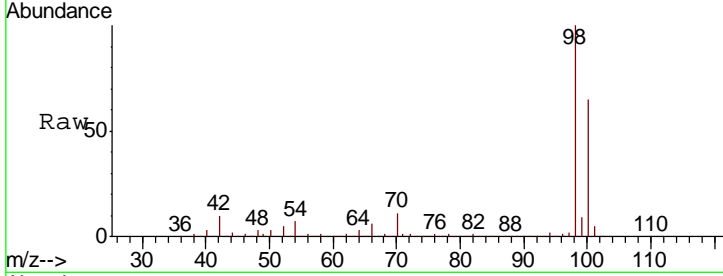




#50  
 Toluene-d8  
 Concen: 52.989 ug/l  
 RT: 8.71 min Scan# 1240  
 Delta R.T. 0.00 min  
 Lab File: VX007914.D  
 Acq: 08 Mar 2019 05:37

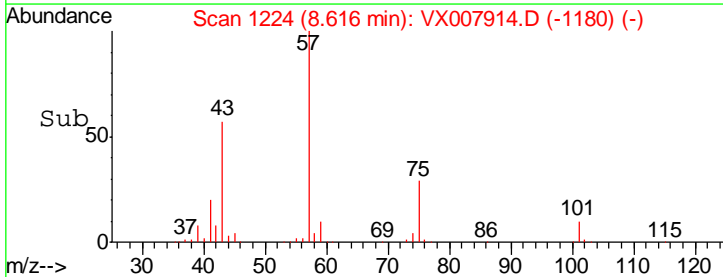
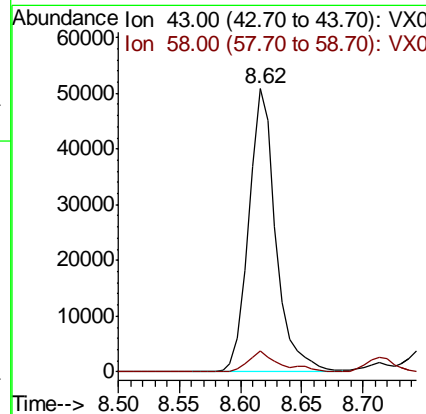
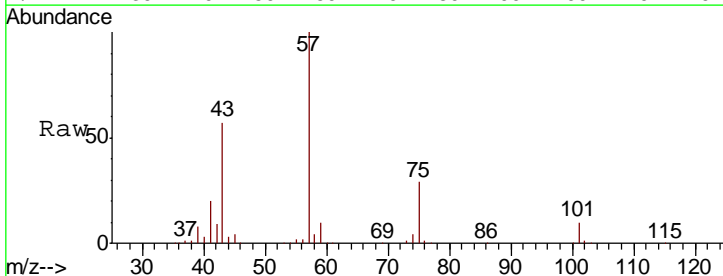
Instrument :  
 MSVOA\_X  
 ClientSampled :  
 Z2-11

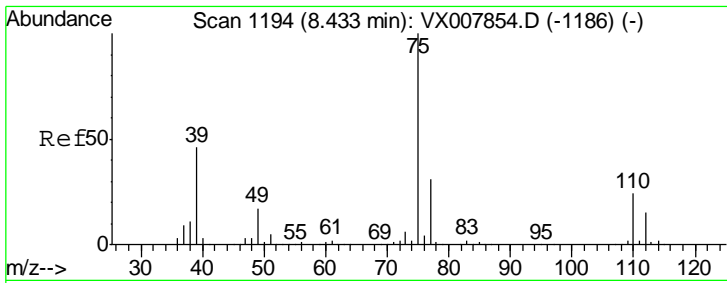
Tgt Ion: 98 Resp: 542185  
 Ion Ratio Lower Upper  
 98 100  
 100 64.6 51.7 77.5



#51  
 4-Methyl-2-Pentanone  
 Concen: 17.366 ug/l  
 RT: 8.62 min Scan# 1224  
 Delta R.T. -0.03 min  
 Lab File: VX007914.D  
 Acq: 08 Mar 2019 05:37

Tgt Ion: 43 Resp: 77354  
 Ion Ratio Lower Upper  
 43 100  
 58 8.5 31.3 46.9#

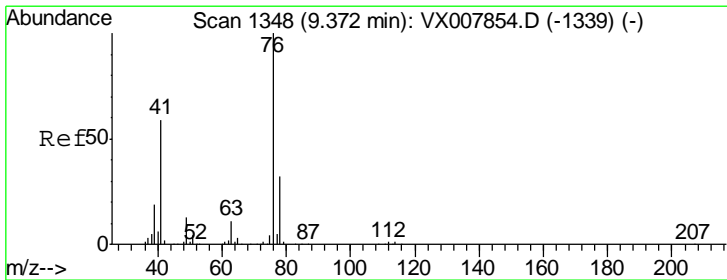
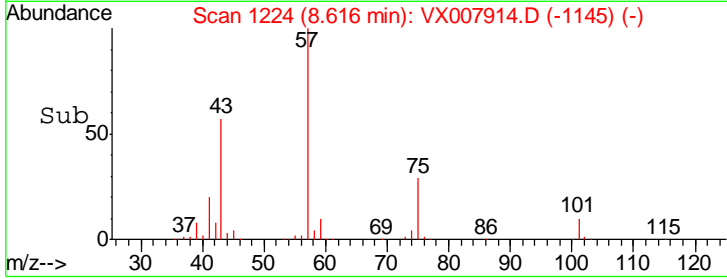
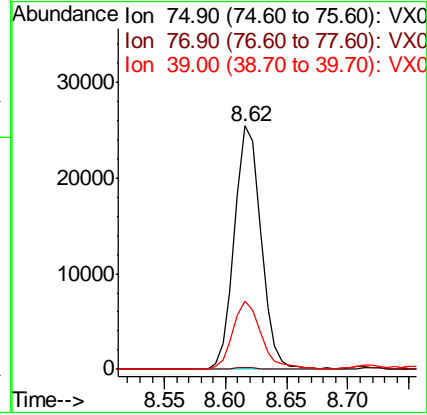
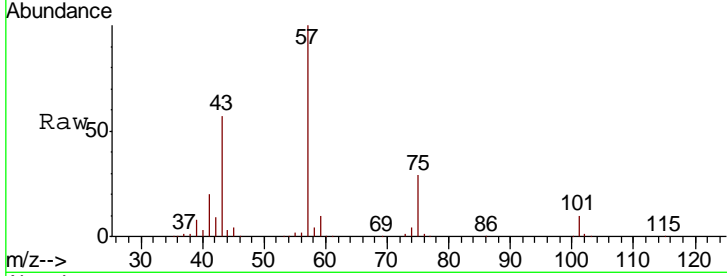




#54  
 cis-1,3-Dichloropropene  
 Concen: 8.726 ug/l  
 RT: 8.62 min Scan# 1224  
 Delta R.T. 0.18 min  
 Lab File: VX007914.D  
 Acq: 08 Mar 2019 05:37

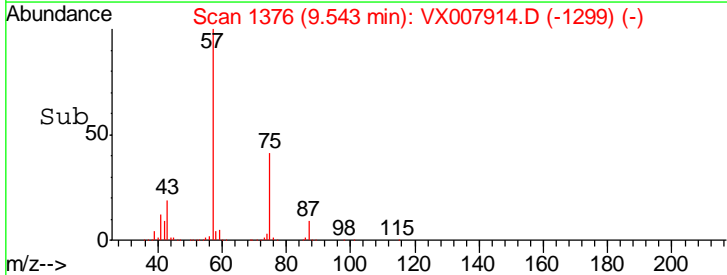
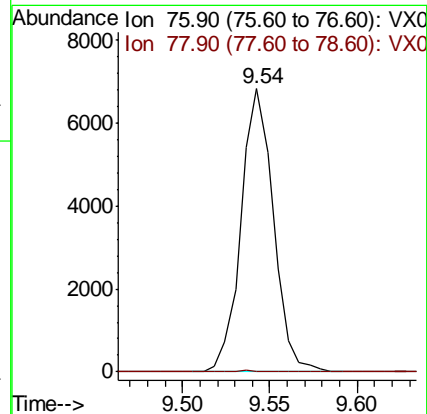
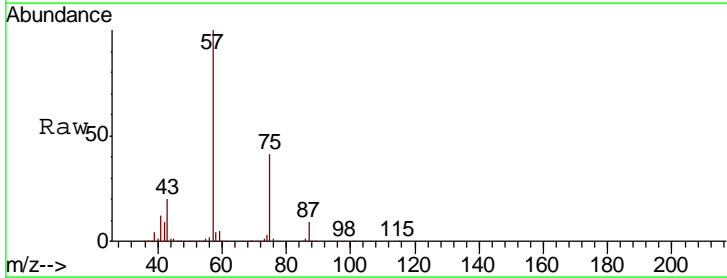
Instrument :  
 MSVOA\_X  
 ClientSampled :  
 Z2-11

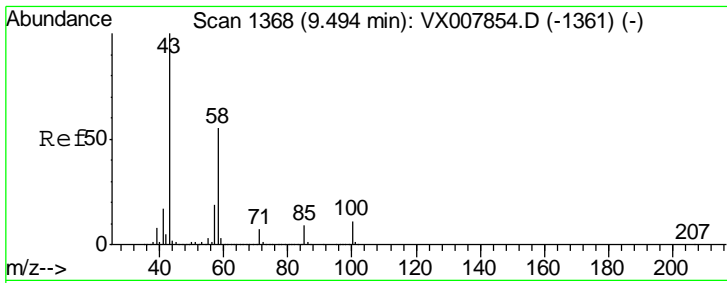
Tgt Ion	Resp	Lower	Upper
75	38267		
77	0.7	25.0	37.6#
39	27.8	36.6	54.8#



#57  
 1,3-Dichloropropane  
 Concen: 1.812 ug/l  
 RT: 9.54 min Scan# 1376  
 Delta R.T. 0.17 min  
 Lab File: VX007914.D  
 Acq: 08 Mar 2019 05:37

Tgt Ion	Resp	Lower	Upper
76	8828		
78	0.2	25.5	38.3#

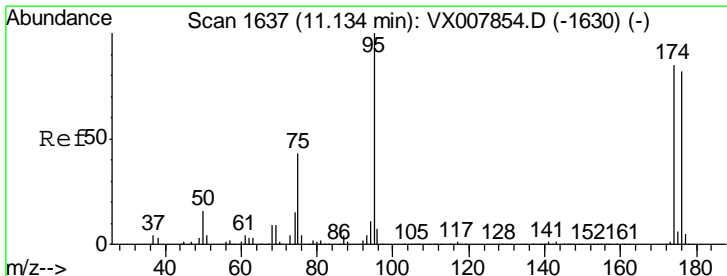
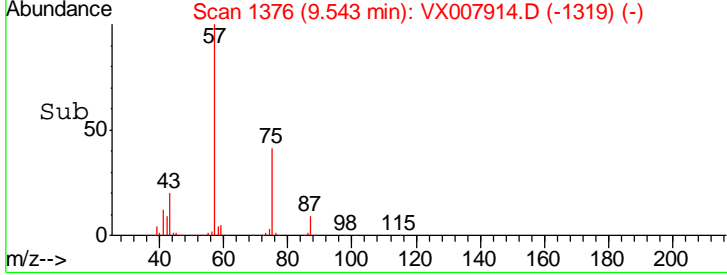
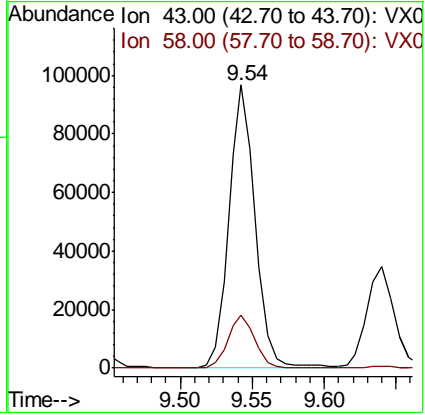
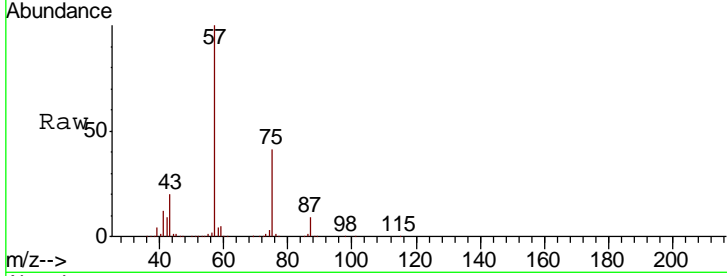




#59  
 2-Hexanone  
 Concen: 35.476 ug/l  
 RT: 9.54 min Scan# 1376  
 Delta R.T. 0.05 min  
 Lab File: VX007914.D  
 Acq: 08 Mar 2019 05:37

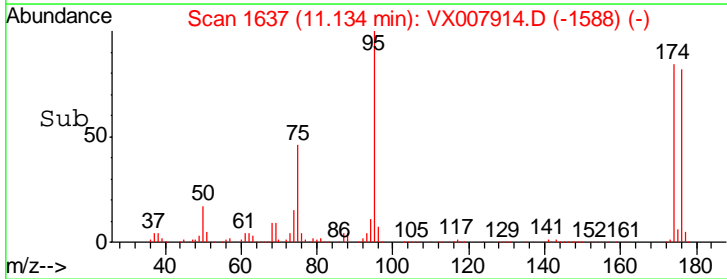
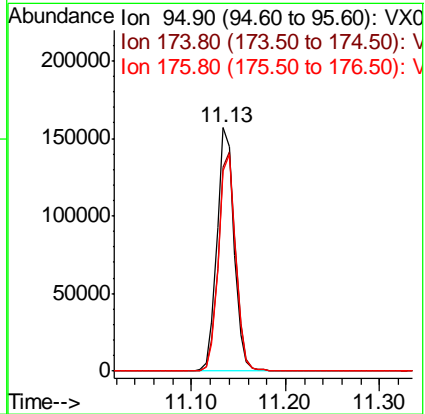
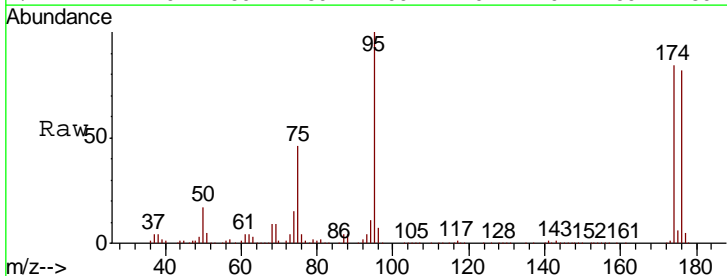
Instrument : MSVOA\_X  
 ClientSampled : Z2-11

Tgt Ion: 43 Resp: 122686  
 Ion Ratio Lower Upper  
 43 100  
 58 19.6 27.6 82.7#

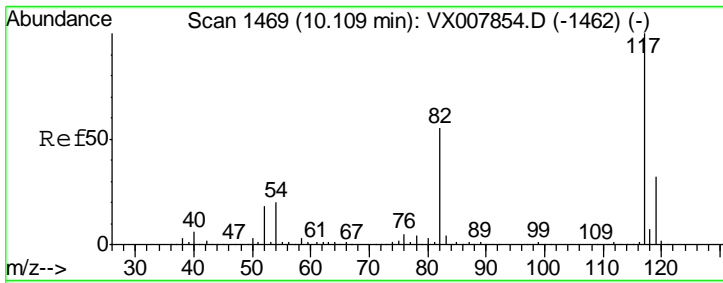


#62  
 4-Bromofluorobenzene  
 Concen: 55.215 ug/l  
 RT: 11.13 min Scan# 1637  
 Delta R.T. 0.00 min  
 Lab File: VX007914.D  
 Acq: 08 Mar 2019 05:37

Tgt Ion: 95 Resp: 198075  
 Ion Ratio Lower Upper  
 95 100  
 174 91.3 0.0 182.8  
 176 89.2 0.0 178.0



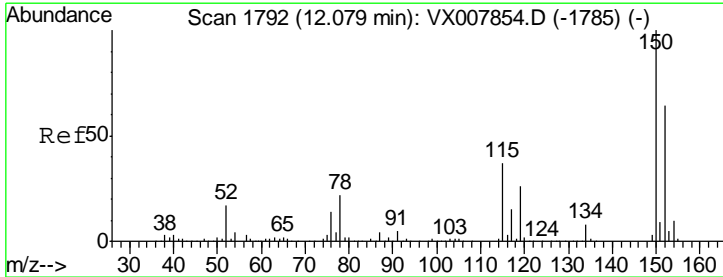
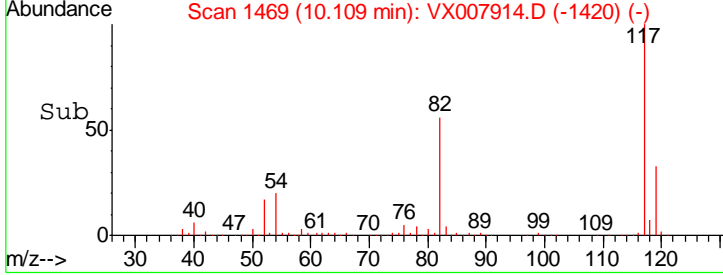
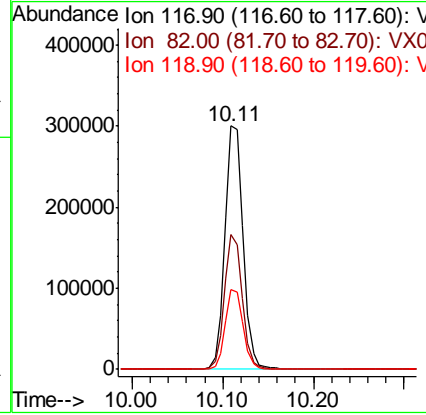
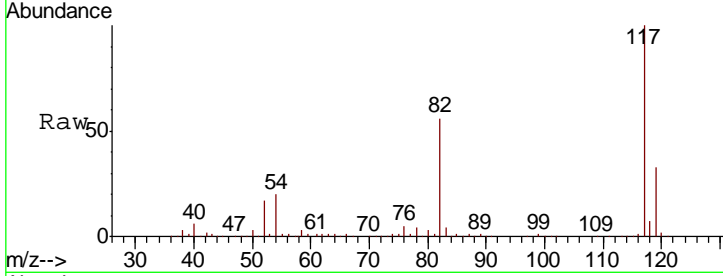




#63  
 Chlorobenzene-d5  
 Concen: 50.000 ug/l  
 RT: 10.11 min Scan# 1469  
 Delta R.T. 0.00 min  
 Lab File: VX007914.D  
 Acq: 08 Mar 2019 05:37

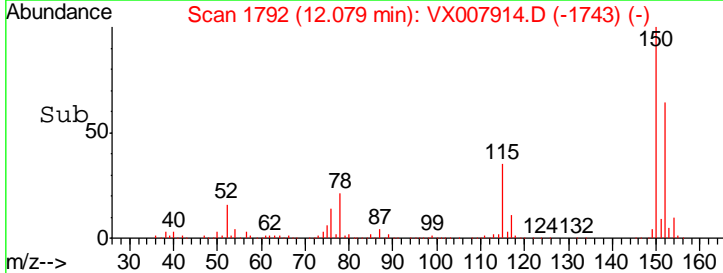
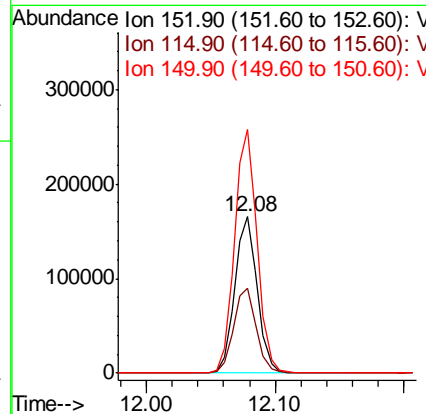
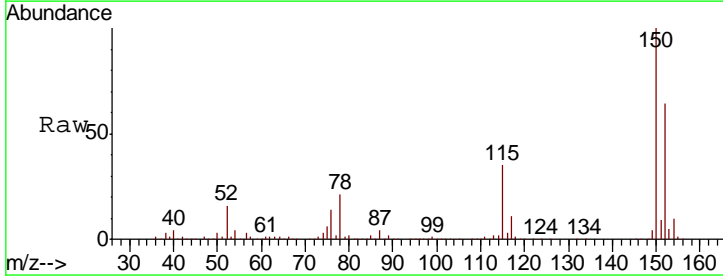
Instrument : MSVOA\_X  
 ClientSampled : Z2-11

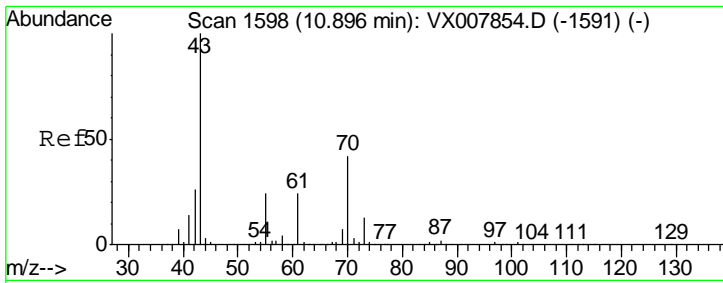
Tgt Ion	Resp	Lower	Upper
117	420749		
82	55.6	44.3	66.5
119	32.5	25.3	37.9



#72  
 1,4-Dichlorobenzene-d4  
 Concen: 50.000 ug/l  
 RT: 12.08 min Scan# 1792  
 Delta R.T. 0.00 min  
 Lab File: VX007914.D  
 Acq: 08 Mar 2019 05:37

Tgt Ion	Resp	Lower	Upper
152	201821		
115	55.2	38.6	115.7
150	156.6	0.0	348.4

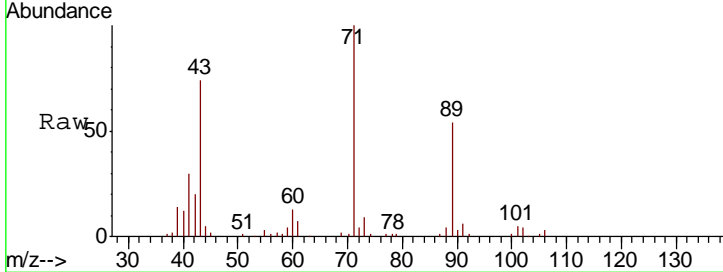




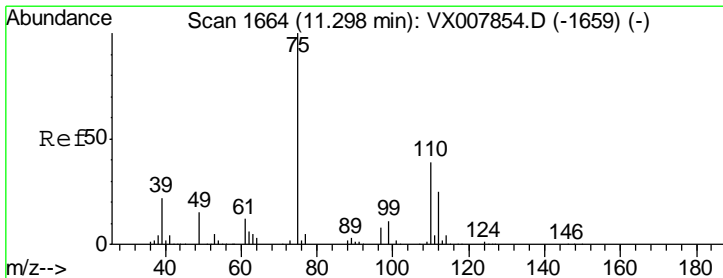
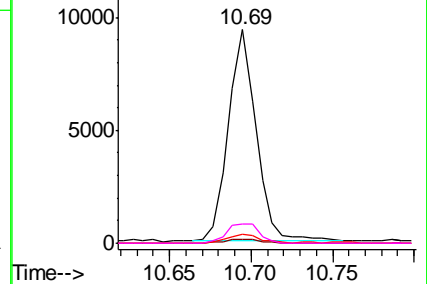
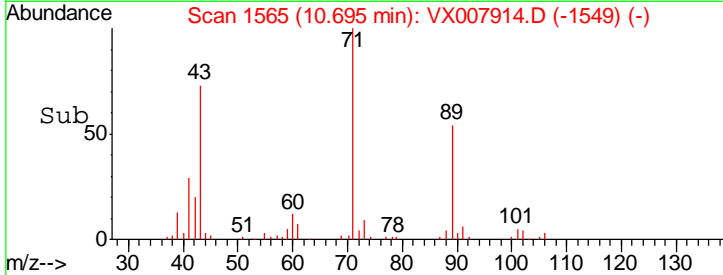
#74  
 N-amyl acetate  
 Concen: 1.787 ug/l  
 RT: 10.69 min Scan# 1565  
 Delta R.T. -0.20 min  
 Lab File: VX007914.D  
 Acq: 08 Mar 2019 05:37

Instrument :  
 MSVOA\_X  
 ClientSampled :  
 Z2-11

Tgt Ion	Resp	Lower	Upper
43	11133		
70	2.5	33.5	50.3#
55	5.2	19.2	28.8#
61	10.6	19.0	28.6#

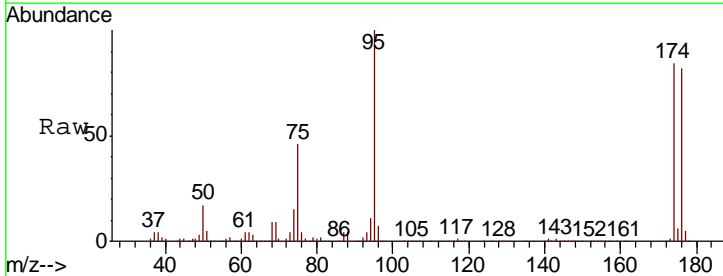


Abundance Ion 43.00 (42.70 to 43.70): VX0  
 Ion 70.00 (69.70 to 70.70): VX0  
 Ion 55.00 (54.70 to 55.70): VX0  
 Ion 61.00 (60.70 to 61.70): VX0

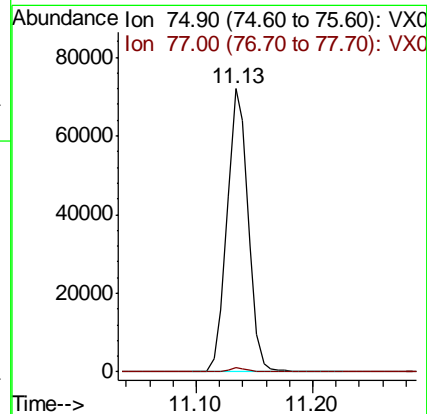
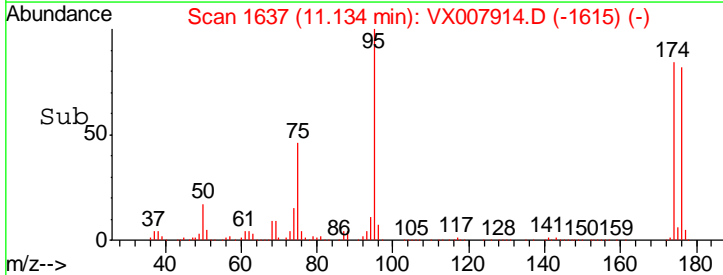


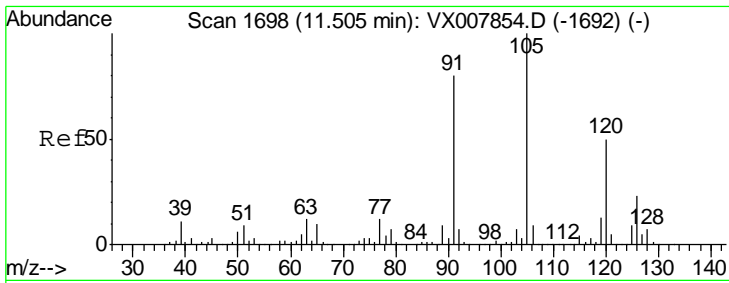
#76  
 1,2,3-Trichloropropane  
 Concen: 21.265 ug/l  
 RT: 11.13 min Scan# 1637  
 Delta R.T. -0.16 min  
 Lab File: VX007914.D  
 Acq: 08 Mar 2019 05:37

Tgt Ion	Resp	Lower	Upper
75	90057		
77	1.3	18.9	56.7#



Abundance Ion 74.90 (74.60 to 75.60): VX0  
 Ion 77.00 (76.70 to 77.70): VX0

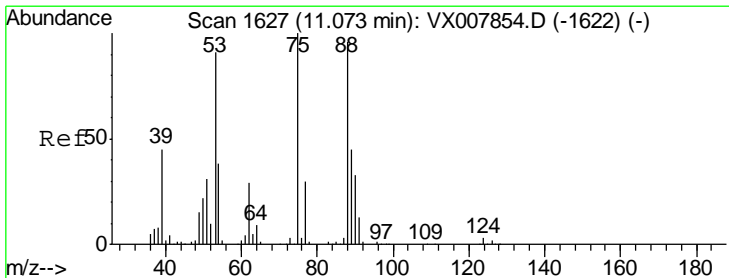
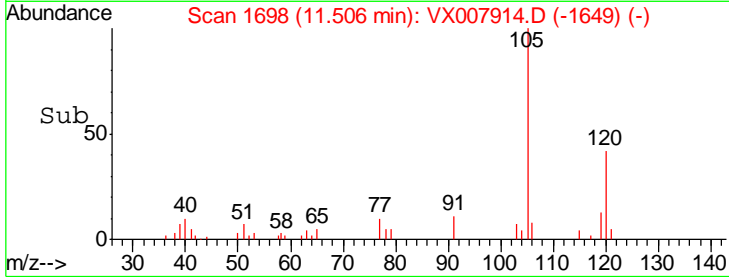
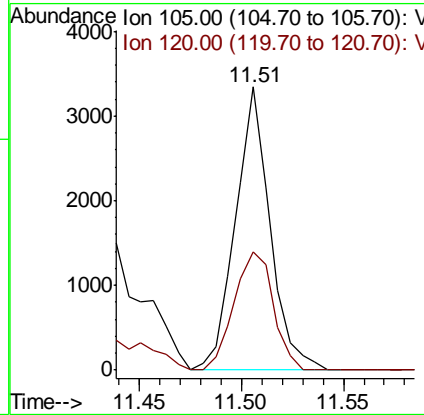
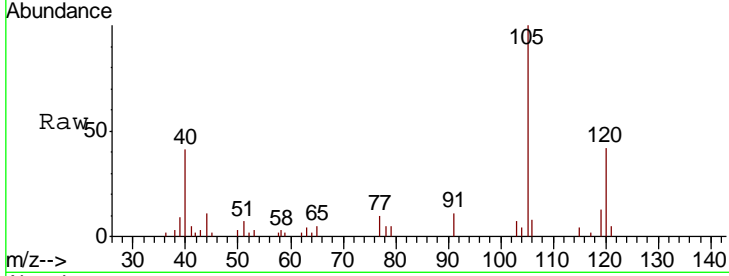




#80  
 1,3,5-Trimethylbenzene  
 Concen: 0.348 ug/l  
 RT: 11.51 min Scan# 1698  
 Delta R.T. 0.00 min  
 Lab File: VX007914.D  
 Acq: 08 Mar 2019 05:37

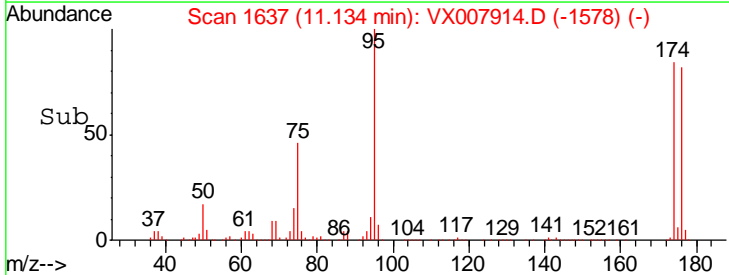
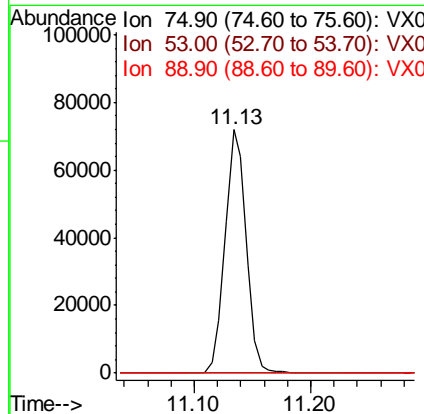
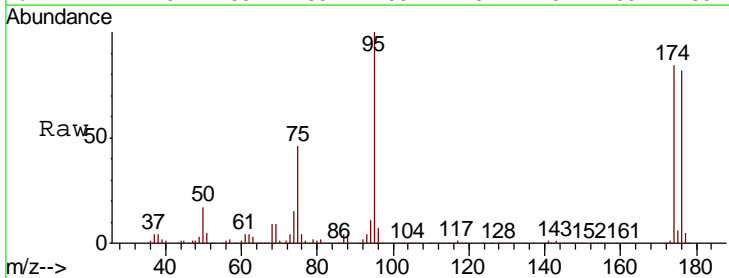
Instrument :  
 MSVOA\_X  
 ClientSampled :  
 Z2-11

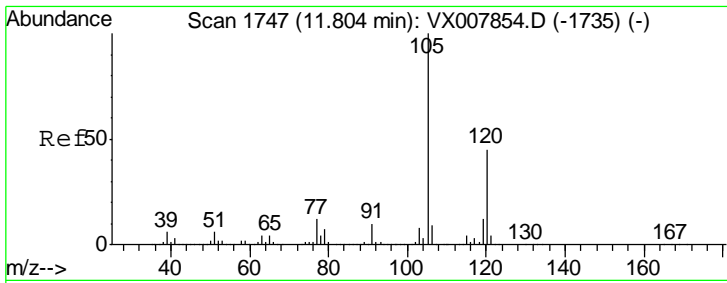
Tgt Ion: 105 Resp: 3914  
 Ion Ratio Lower Upper  
 105 100  
 120 47.5 24.9 74.6



#81  
 trans-1,4-Dichloro-2-butene  
 Concen: 67.972 ug/l  
 RT: 11.13 min Scan# 1637  
 Delta R.T. 0.06 min  
 Lab File: VX007914.D  
 Acq: 08 Mar 2019 05:37

Tgt Ion: 75 Resp: 90057  
 Ion Ratio Lower Upper  
 75 100  
 53 0.1 76.1 114.1#  
 89 0.0 36.3 54.5#

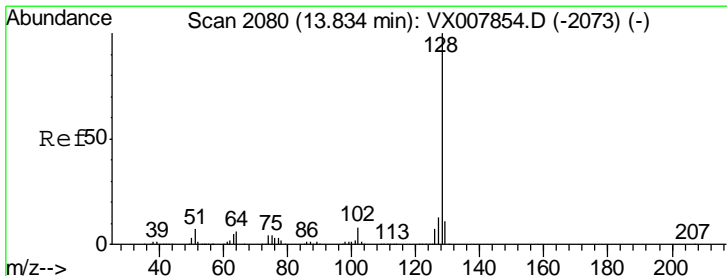
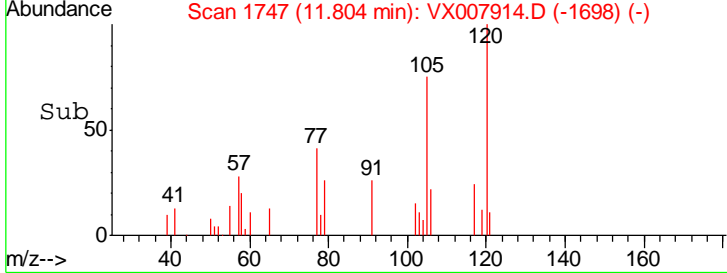
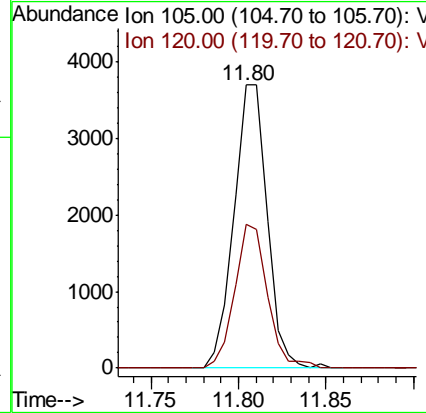
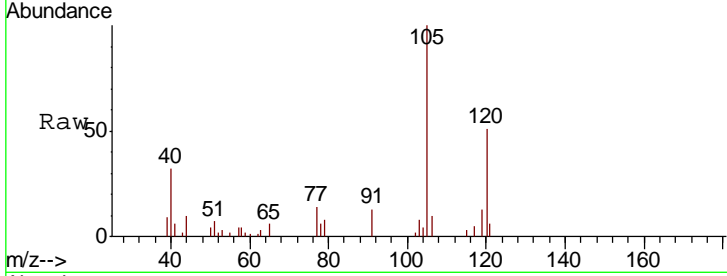




#84  
 1,2,4-Trimethylbenzene  
 Concen: 0.425 ug/l  
 RT: 11.80 min Scan# 1747  
 Delta R.T. 0.00 min  
 Lab File: VX007914.D  
 Acq: 08 Mar 2019 05:37

Instrument :  
 MSVOA\_X  
 ClientSampled :  
 Z2-11

Tgt Ion:105 Resp: 4898  
 Ion Ratio Lower Upper  
 105 100  
 120 50.1 22.6 67.7



#95  
 Naphthalene  
 Concen: 0.608 ug/l  
 RT: 13.83 min Scan# 2080  
 Delta R.T. 0.00 min  
 Lab File: VX007914.D  
 Acq: 08 Mar 2019 05:37

Tgt Ion:128 Resp: 8093  
 Ion Ratio Lower Upper  
 128 100  
 127 13.3 10.3 15.5  
 129 11.2 8.7 13.1

