

Data Path : Z:\VOASRV\HPCHEM1\MSVOA X\DATA\VX030819\
 Data File : VX007926.D
 Acq On : 08 Mar 2019 12:48
 Operator : JC/SP
 Sample : VX0308WBL01
 Misc : 5.0mL/MSVOA X/WATER
 ALS Vial : 8 Sample Multiplier: 1

Instrument :
 MSVOA_X
 ClientSampleId :
 VX0308WBL01

Quant Time: Mar 09 03:47:28 2019
 Quant Method : Z:\VOASRV\HPCHEM1\MSVOA X\METHOD\624X030819W.M
 Quant Title : METHOD 624 VOLATILE ORGANIC ANALYSIS
 QLast Update : Fri Mar 08 12:01:36 2019
 Response via : Initial Calibration

Internal Standards	R.T.	QIon	Response	Conc	Units	Dev(Min)
1) Bromochloromethane	5.02	128	42953	30.00	ug/l	0.00
28) 1,4-Difluorobenzene	6.86	114	234068	30.00	ug/l	0.00
57) Chlorobenzene-d5	10.11	117	202767	30.00	ug/l	0.00

System Monitoring Compounds

27) 1,2-Dichloroethane-d4	6.07	65	86776	30.74	ug/l	0.00
Spiked Amount	30.000	Range	50 - 169	Recovery	=	102.47%
60) 4-Bromofluorobenzene	11.13	95	90874	28.08	ug/l	0.00
Spiked Amount	30.000	Range	56 - 143	Recovery	=	93.60%
63) Toluene-d8	8.71	98	276211	29.77	ug/l	0.00
Spiked Amount	30.000	Range	66 - 137	Recovery	=	99.23%

Target Compounds

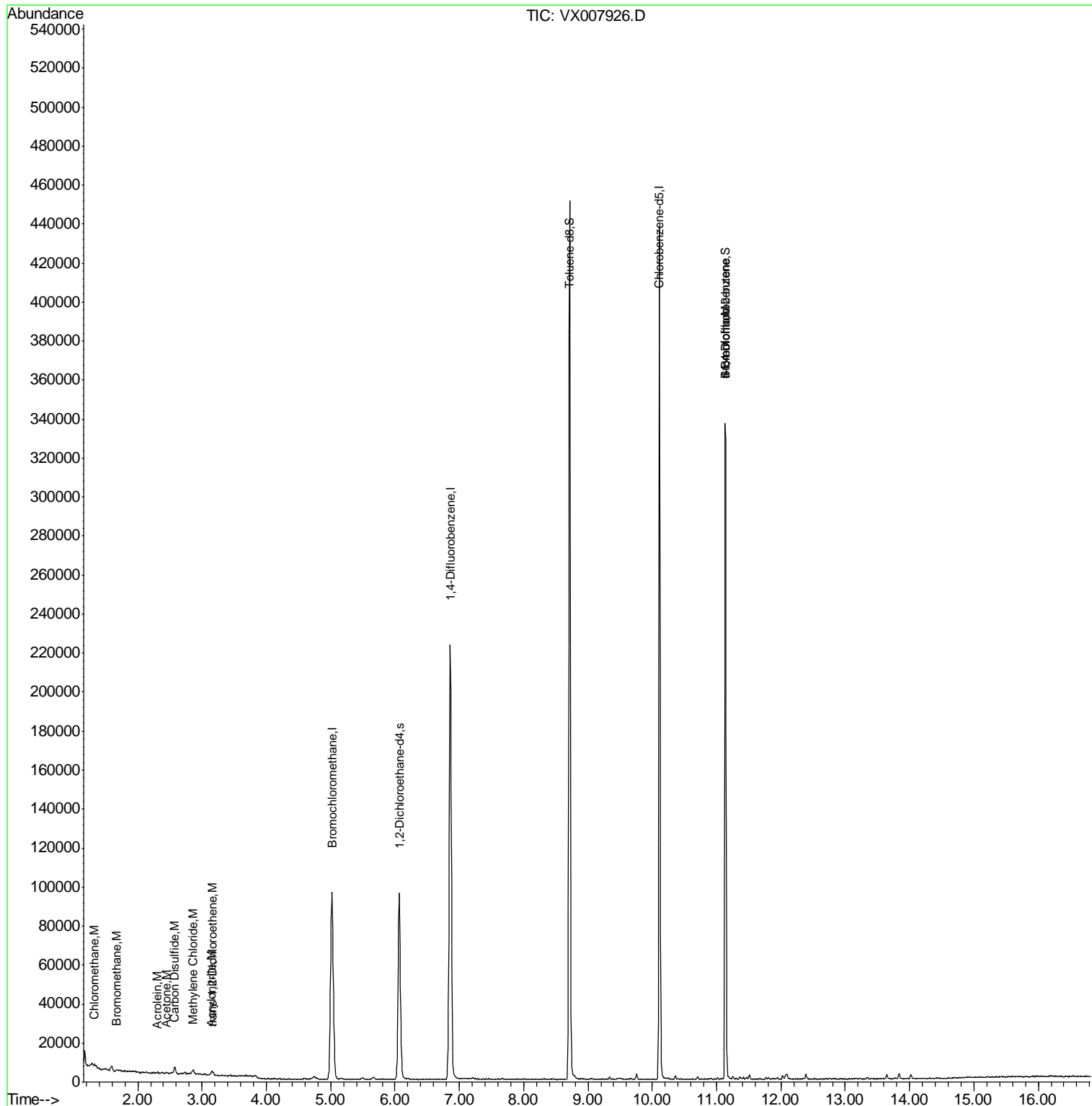
					Ovalue
3) Chloromethane	1.33	50	570	0.201	ug/l 88
5) Bromomethane	1.67	94	568	0.406	ug/l 81
13) Acrolein	2.29	56	151	0.327	ug/l # 1
14) Acrylonitrile	3.15	53	758	0.453	ug/l 90
15) Acetone	2.45	58	123	0.204	ug/l # 1
16) Carbon Disulfide	2.57	76	4049	0.518	ug/l 97
18) Methylene Chloride	2.87	84	947	0.334	ug/l 96
19) trans-1,2-Dichloroethene	3.17	96	535	0.203	ug/l 82
56) Bromoform	11.13	173	939	0.399	ug/l # 1
77) t-1,4-Dichloro-2-butene	11.13	75	42516	34.934	ug/l # 5

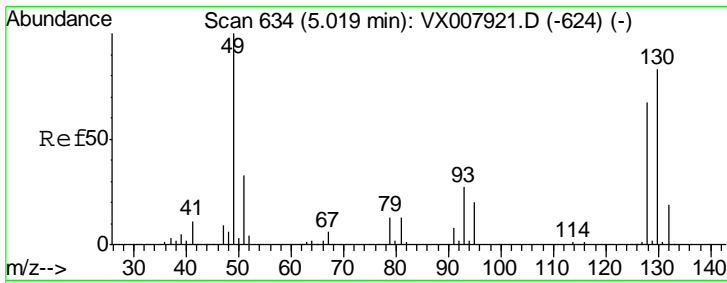
(#) = qualifier out of range (m) = manual integration (+) = signals summed

Data Path : Z:\VOASRV\HPCHEM1\MSVOA X\DATA\VX030819\
 Data File : VX007926.D
 Acq On : 08 Mar 2019 12:48
 Operator : JC/SP
 Sample : VX0308WBL01
 Misc : 5.0mL/MSVOA X/WATER
 ALS Vial : 8 Sample Multiplier: 1

Instrument :
 MSVOA_X
 ClientSampleId :
 VX0308WBL01

Quant Time: Mar 09 03:47:28 2019
 Quant Method : Z:\VOASRV\HPCHEM1\MSVOA X\METHOD\624X030819W.M
 Quant Title : METHOD 624 VOLATILE ORGANIC ANALYSIS
 QLast Update : Fri Mar 08 12:01:36 2019
 Response via : Initial Calibration

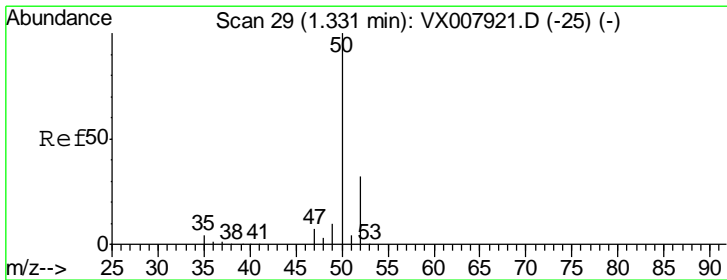
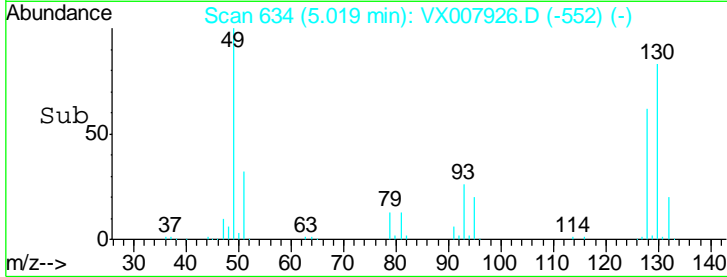
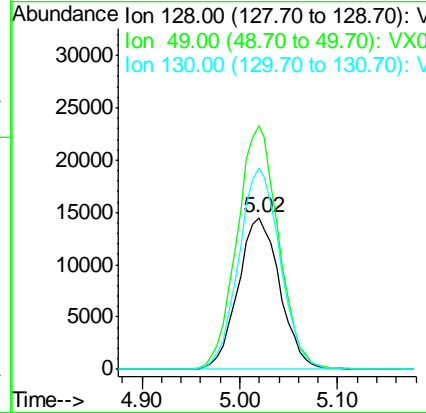
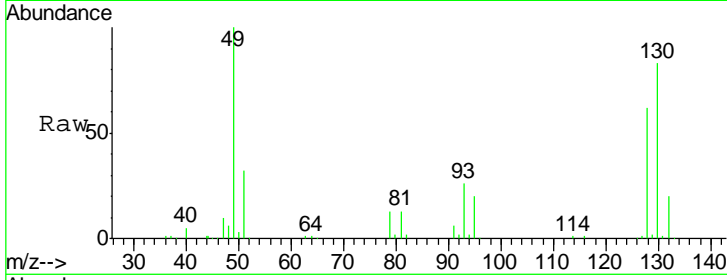




#1
 Bromochloromethane
 Concen: 30.000 ug/l
 RT: 5.02 min Scan# 634
 Delta R.T. 0.00 min
 Lab File: VX007926.D
 Acq: 08 Mar 2019 12:48

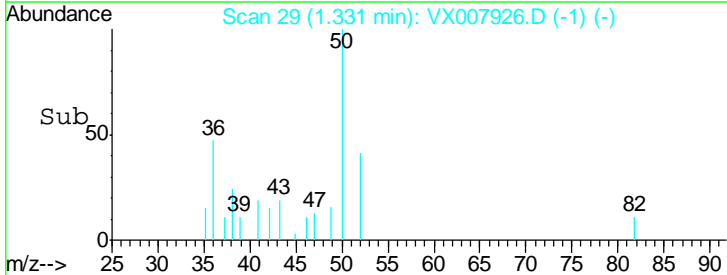
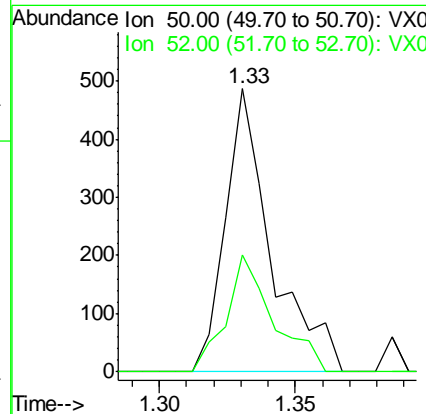
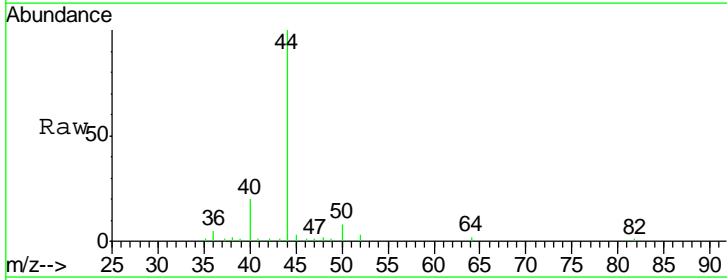
Instrument :
 MSVOA_X
 ClientSampleId :
 VX0308WBL01

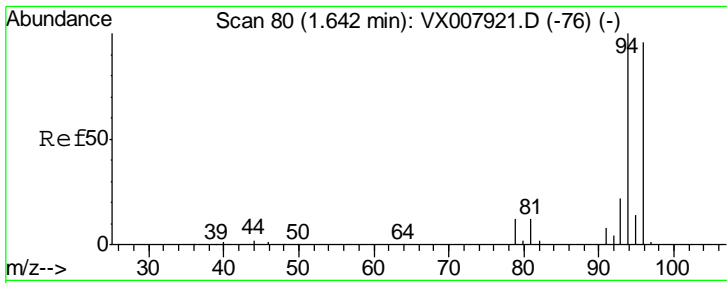
Tgt Ion	Resp	Lower	Upper
128	100		
49	159.3	0.0	350.8
130	131.5	0.0	325.8



#3
 Chloromethane
 Concen: 0.201 ug/l
 RT: 1.33 min Scan# 29
 Delta R.T. 0.00 min
 Lab File: VX007926.D
 Acq: 08 Mar 2019 12:48

Tgt Ion	Resp	Lower	Upper
50	100		
52	41.3	27.5	41.3

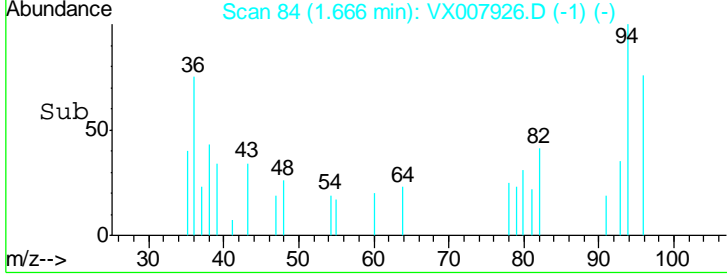
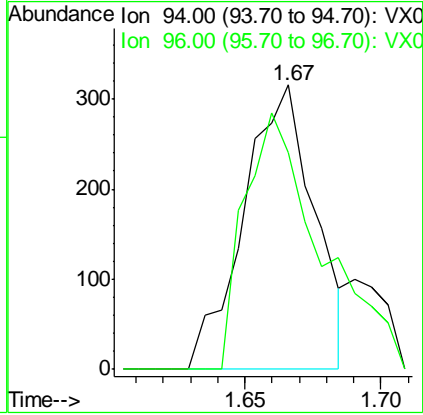
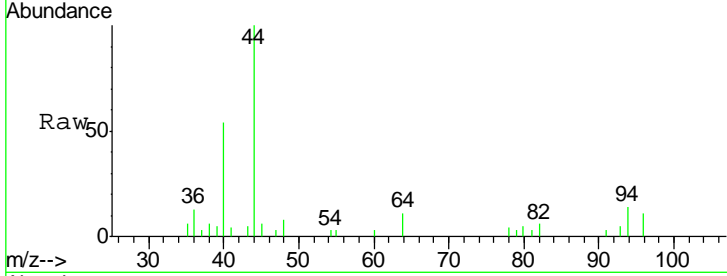




#5
 Bromomethane
 Concen: 0.406 ug/l
 RT: 1.67 min Scan# 84
 Delta R.T. 0.02 min
 Lab File: VX007926.D
 Acq: 08 Mar 2019 12:48

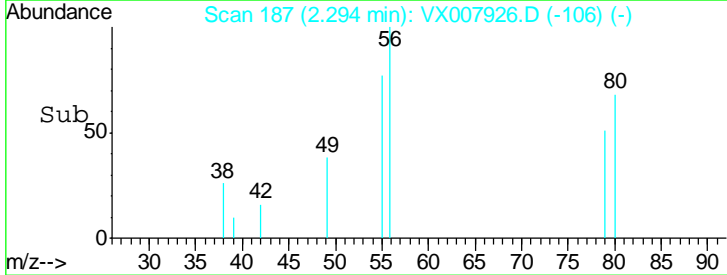
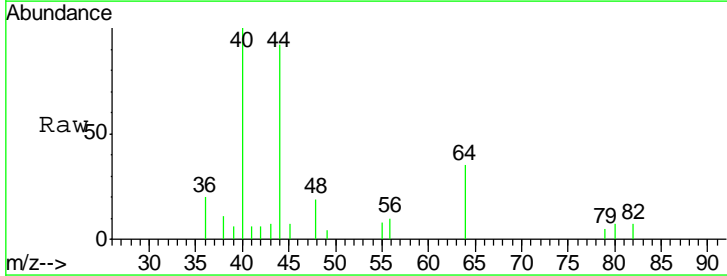
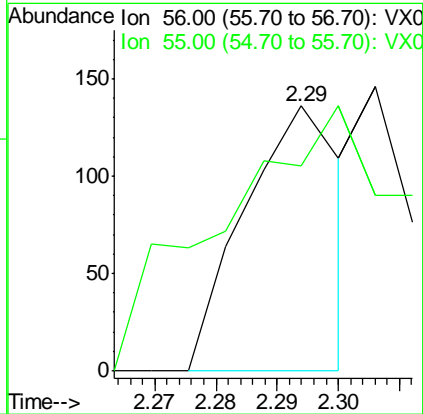
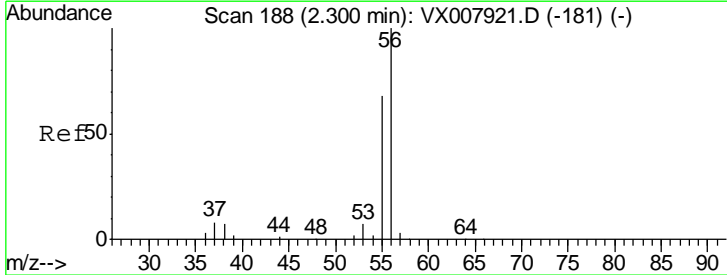
Instrument :
 MSVOA_X
ClientSampled :
 VX0308WBL01

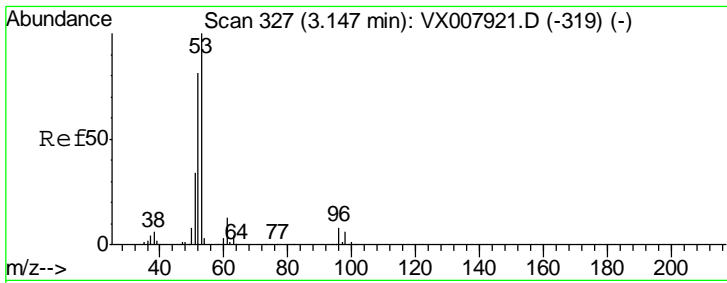
Tgt Ion: 94 Resp: 568
 Ion Ratio Lower Upper
 94 100
 96 76.3 75.6 113.4



#13
 Acrolein
 Concen: 0.327 ug/l
 RT: 2.29 min Scan# 187
 Delta R.T. -0.01 min
 Lab File: VX007926.D
 Acq: 08 Mar 2019 12:48

Tgt Ion: 56 Resp: 151
 Ion Ratio Lower Upper
 56 100
 55 158.9 58.6 87.8#

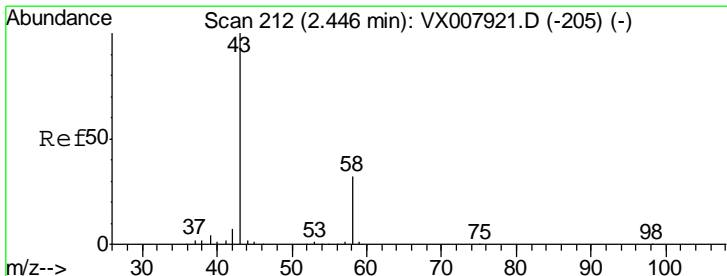
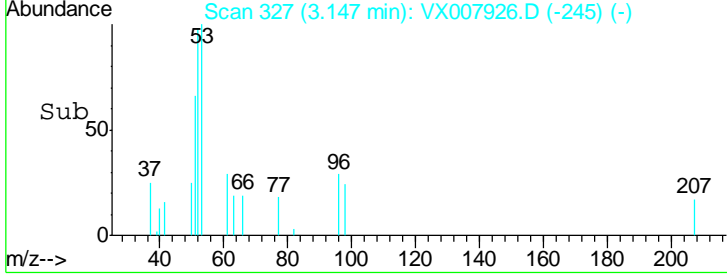
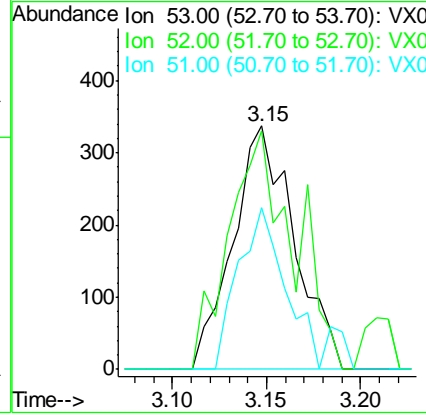
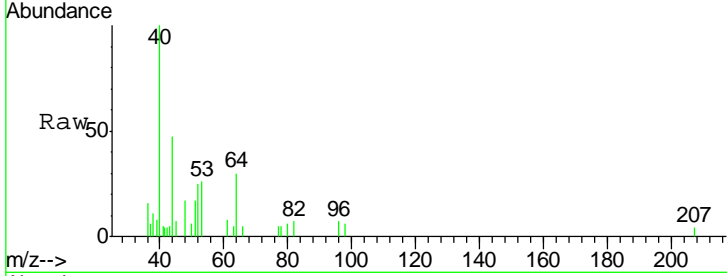




#14
 Acrylonitrile
 Concen: 0.453 ug/l
 RT: 3.15 min Scan# 327
 Delta R.T. 0.00 min
 Lab File: VX007926.D
 Acq: 08 Mar 2019 12:48

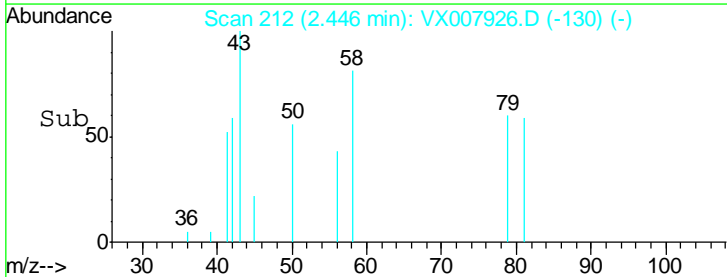
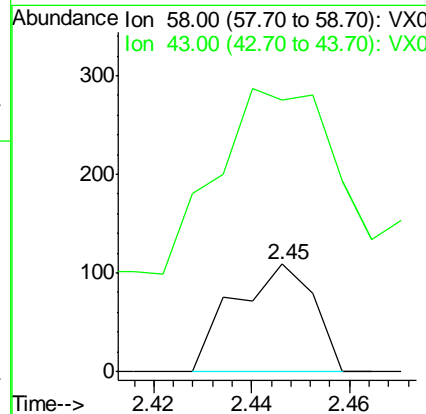
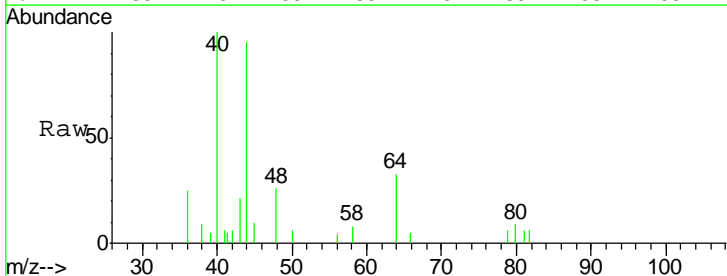
Instrument :
 MSVOA_X
ClientSampled :
 VX0308WBL01

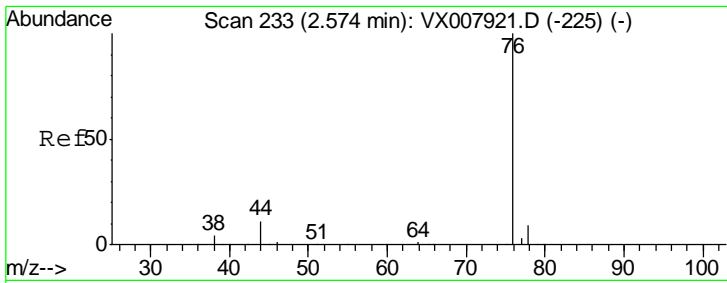
Tgt Ion	Resp	Lower	Upper
53	100		
52	85.1	41.3	124.1
51	51.2	17.5	52.6



#15
 Acetone
 Concen: 0.204 ug/l
 RT: 2.45 min Scan# 212
 Delta R.T. 0.00 min
 Lab File: VX007926.D
 Acq: 08 Mar 2019 12:48

Tgt Ion	Resp	Lower	Upper
58	100		
43	87.2	249.8	374.6#

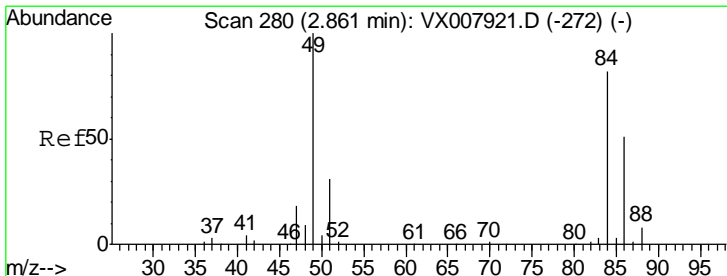
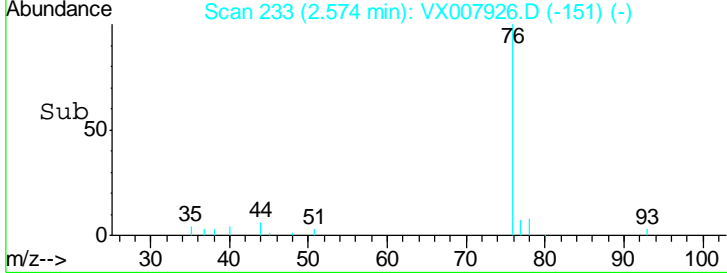
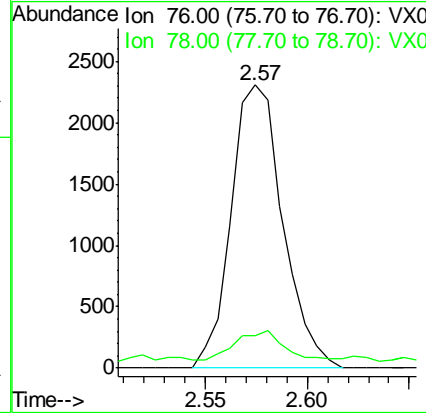
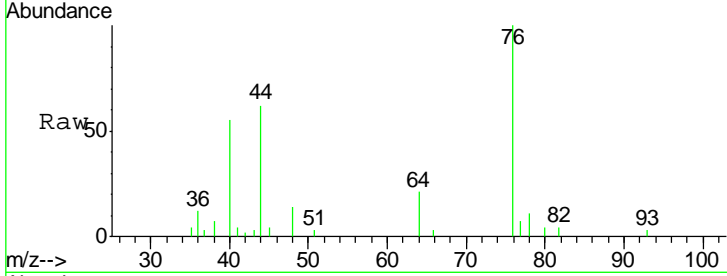




#16
 Carbon Disulfide
 Concen: 0.518 ug/l
 RT: 2.57 min Scan# 233
 Delta R.T. 0.00 min
 Lab File: VX007926.D
 Acq: 08 Mar 2019 12:48

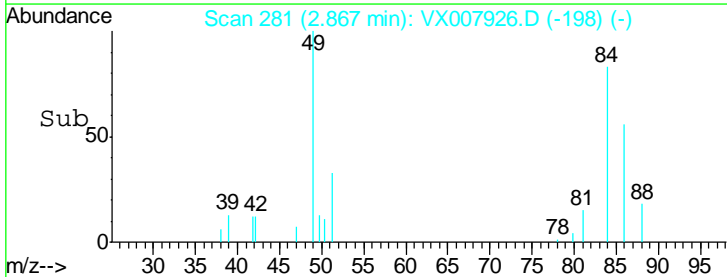
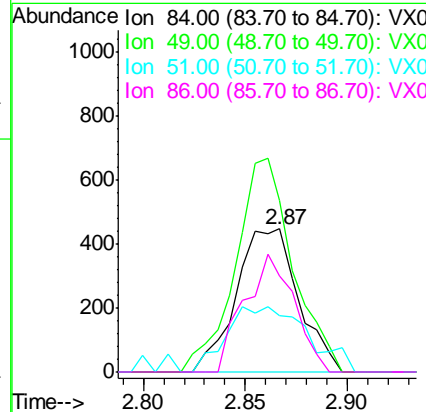
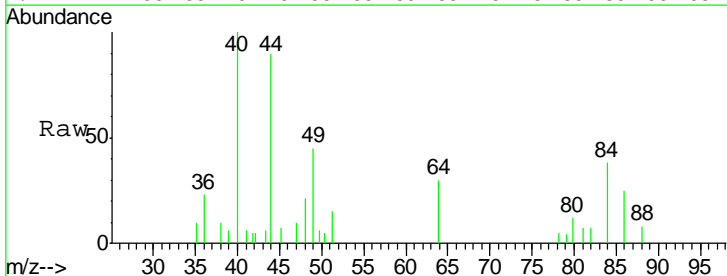
Instrument :
 MSVOA_X
ClientSampled :
 VX0308WBL01

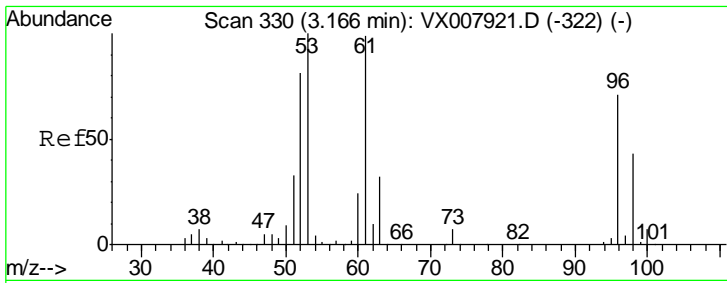
Tgt Ion	Resp	Lower	Upper
76	100		
78	8.2	7.5	11.3



#18
 Methylene Chloride
 Concen: 0.334 ug/l
 RT: 2.87 min Scan# 281
 Delta R.T. 0.01 min
 Lab File: VX007926.D
 Acq: 08 Mar 2019 12:48

Tgt Ion	Resp	Lower	Upper
84	100		
49	120.0	96.1	144.1
51	39.5	29.1	43.7
86	67.0	47.3	70.9

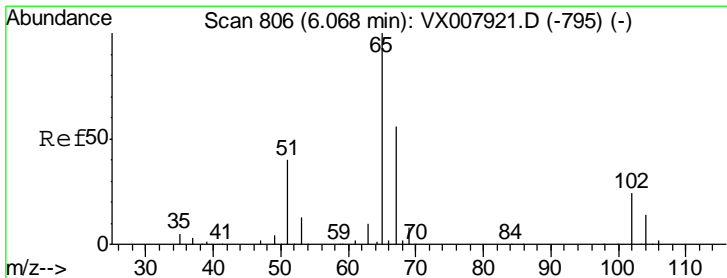
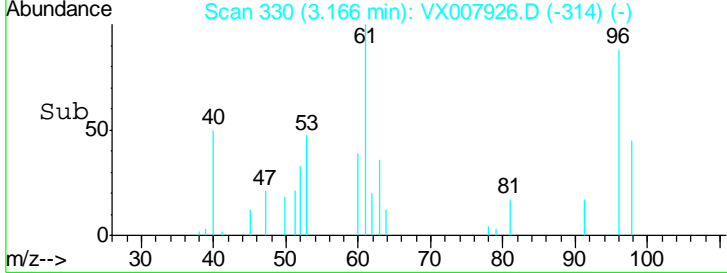
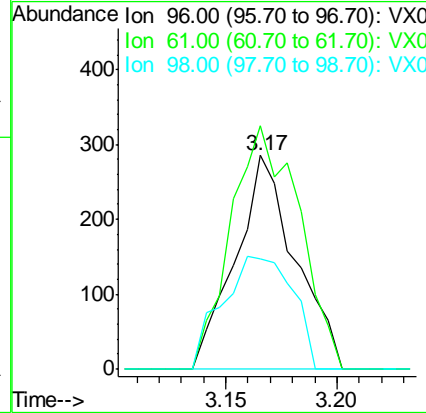
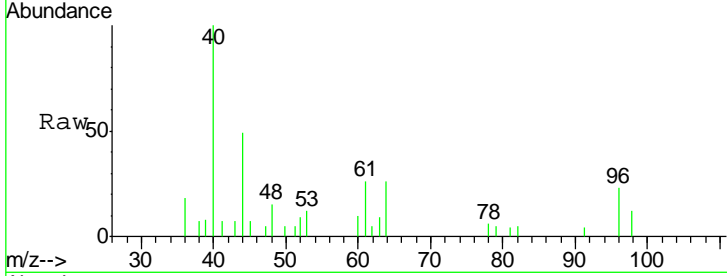




#19
 trans-1,2-Dichloroethene
 Concen: 0.203 ug/l
 RT: 3.17 min Scan# 330
 Delta R.T. 0.00 min
 Lab File: VX007926.D
 Acq: 08 Mar 2019 12:48

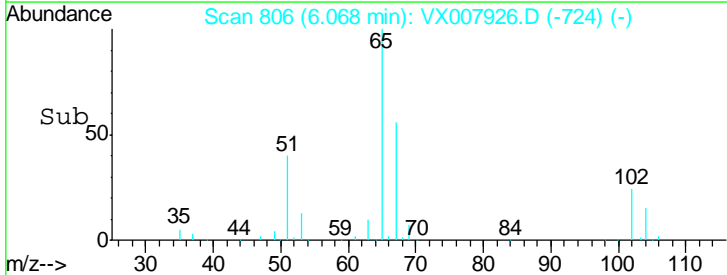
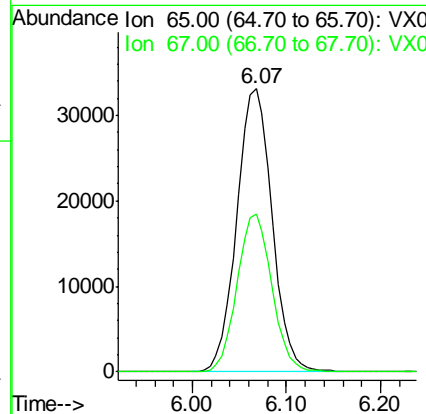
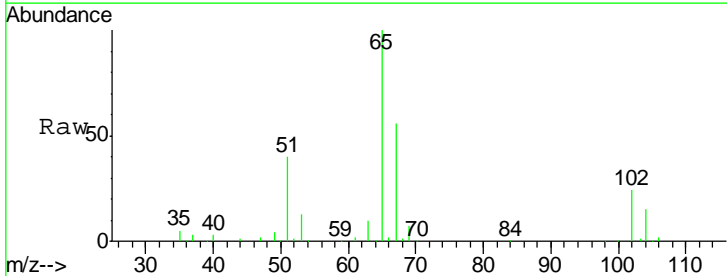
Instrument :
 MSVOA_X
ClientSampled :
 VX0308WBL01

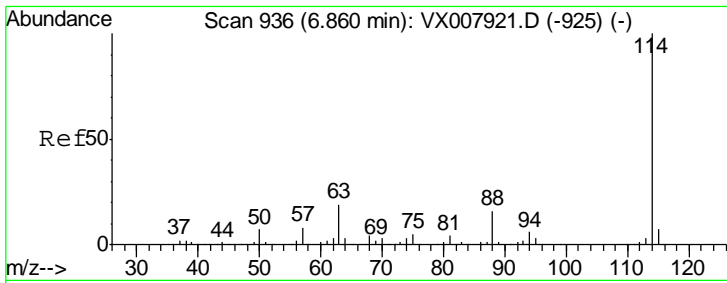
Tgt Ion	Resp	Lower	Upper
96	535		
96	100		
61	114.0	109.9	164.9
98	51.6	50.4	75.6



#27
 1,2-Dichloroethane-d4
 Concen: 30.736 ug/l
 RT: 6.07 min Scan# 806
 Delta R.T. 0.00 min
 Lab File: VX007926.D
 Acq: 08 Mar 2019 12:48

Tgt Ion	Resp	Lower	Upper
65	86776		
65	100		
67	54.5	42.9	64.3

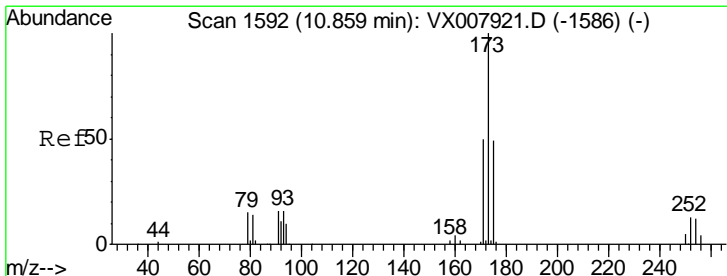
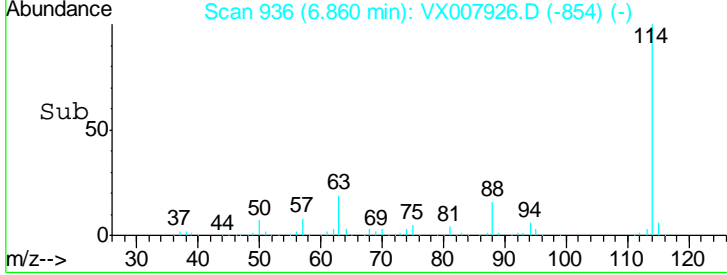
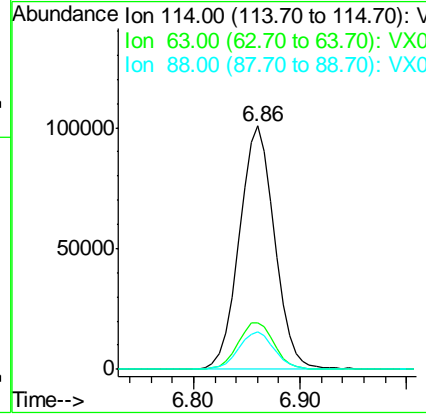
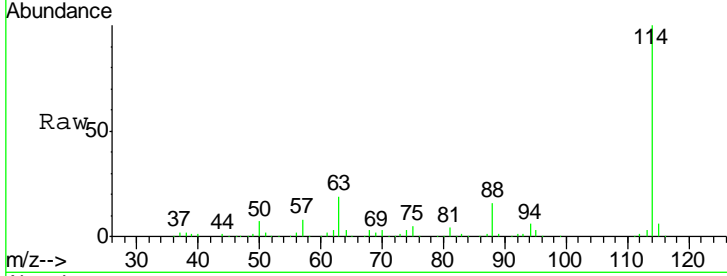




#28
 1,4-Difluorobenzene
 Concen: 30.000 ug/l
 RT: 6.86 min Scan# 936
 Delta R.T. 0.00 min
 Lab File: VX007926.D
 Acq: 08 Mar 2019 12:48

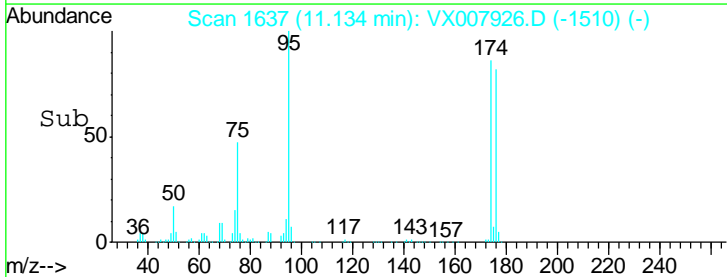
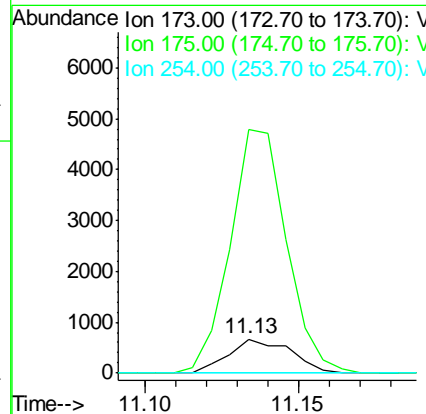
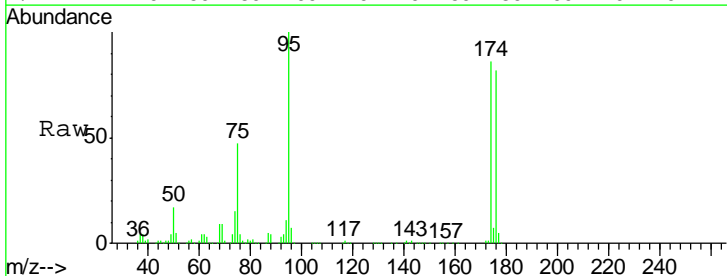
Instrument : MSVOA_X
 ClientSampled : VX0308WBL01

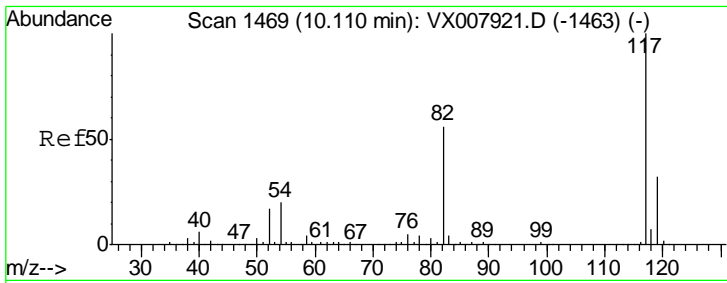
Tgt Ion	Resp	Lower	Upper
114	100		
63	19.7	14.2	21.4
88	15.6	11.9	17.9



#56
 Bromoform
 Concen: 0.399 ug/l
 RT: 11.13 min Scan# 1637
 Delta R.T. 0.27 min
 Lab File: VX007926.D
 Acq: 08 Mar 2019 12:48

Tgt Ion	Resp	Lower	Upper
173	100		
175	652.0	38.5	57.7#
254	0.0	7.4	11.2#

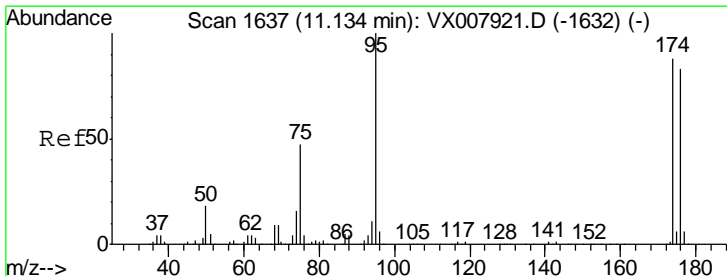
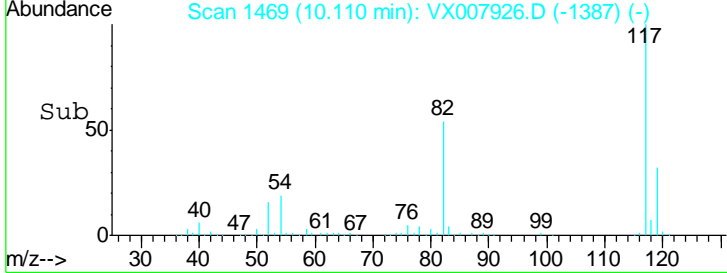
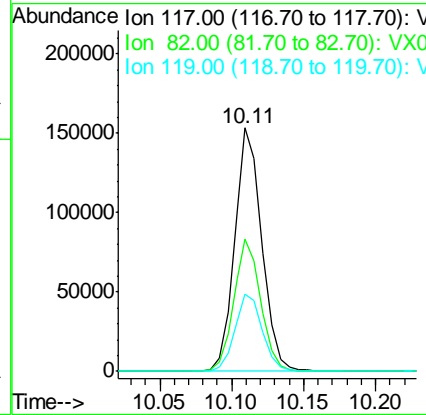
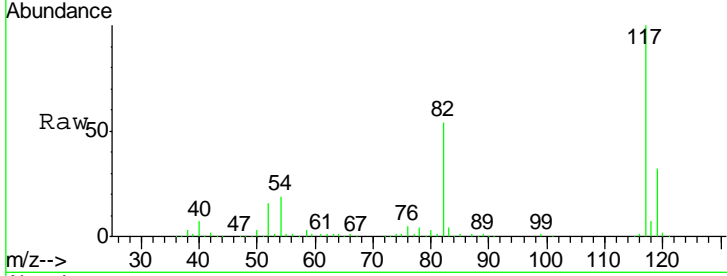




#57
 Chlorobenzene-d5
 Concen: 30.000 ug/l
 RT: 10.11 min Scan# 1469
 Delta R.T. 0.00 min
 Lab File: VX007926.D
 Acq: 08 Mar 2019 12:48

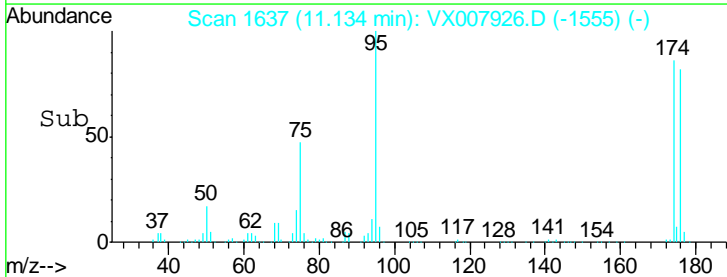
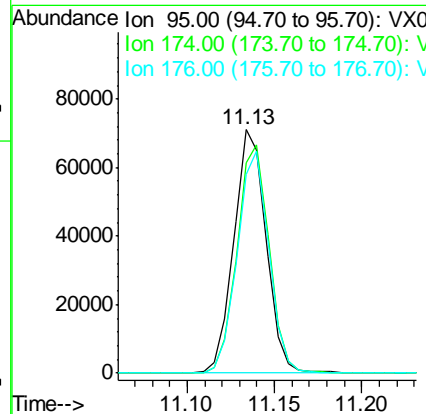
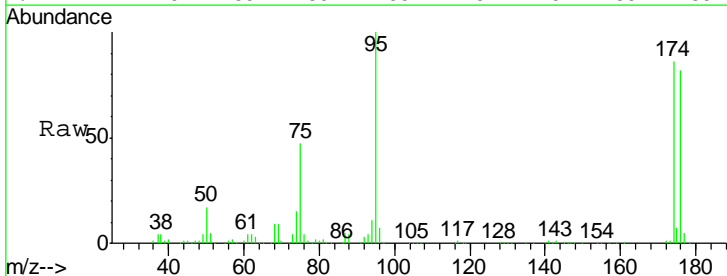
Instrument :
 MSVOA_X
 ClientSampled :
 VX0308WBL01

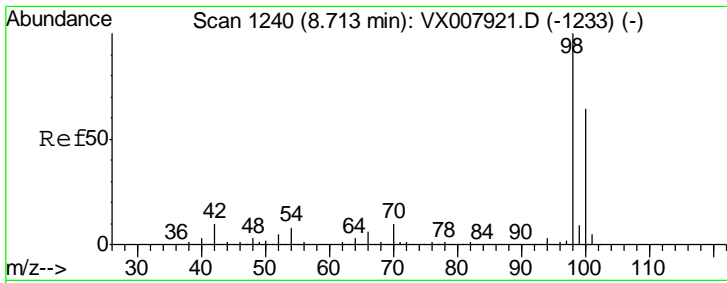
Tgt Ion	Resp	Lower	Upper
117	100		
82	53.8	40.4	60.6
119	32.3	25.8	38.6



#60
 4-Bromofluorobenzene
 Concen: 28.079 ug/l
 RT: 11.13 min Scan# 1637
 Delta R.T. 0.00 min
 Lab File: VX007926.D
 Acq: 08 Mar 2019 12:48

Tgt Ion	Resp	Lower	Upper
95	100		
174	93.7	74.9	112.3
176	90.0	70.7	106.1

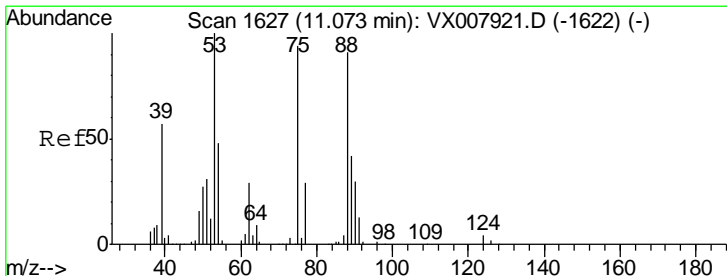
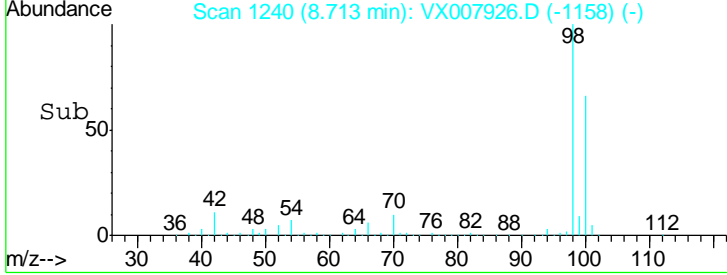
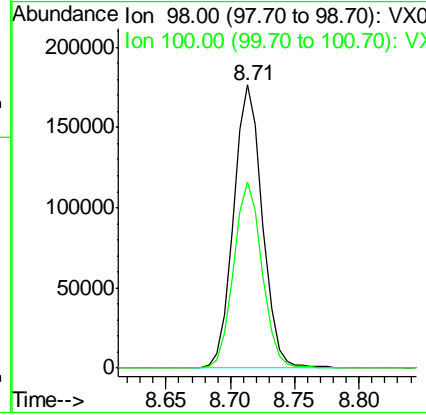
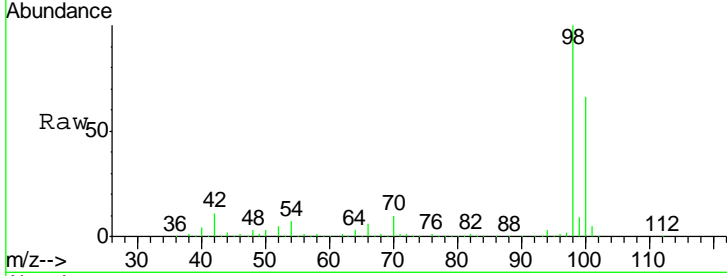




#63
 Toluene-d8
 Concen: 29.766 ug/l
 RT: 8.71 min Scan# 1240
 Delta R.T. 0.00 min
 Lab File: VX007926.D
 Acq: 08 Mar 2019 12:48

Instrument : MSVOA_X
 ClientSampled : VX0308WBL01

Tgt Ion: 98 Resp: 276211
 Ion Ratio Lower Upper
 98 100
 100 65.0 50.9 76.3



#77
 t-1,4-Dichloro-2-butene
 Concen: 34.934 ug/l
 RT: 11.13 min Scan# 1637
 Delta R.T. 0.06 min
 Lab File: VX007926.D
 Acq: 08 Mar 2019 12:48

Tgt Ion: 75 Resp: 42516
 Ion Ratio Lower Upper
 75 100
 53 0.0 55.5 166.7#
 89 0.0 24.4 73.2#

