

Data Path : Z:\VOASRV\HPCHEM1\MSVOA_X\DATA\VX030920\
 Data File : VX015145.D
 Acq On : 09 Mar 2020 16:06
 Operator : JC/SP
 Sample : L1842-11
 Misc : 5.0mL/MSVOA_X/WATER
 ALS Vial : 16 Sample Multiplier: 1

Instrument :
 MSVOA_X
 ClientSampleId :
 RE132D6-20200304

Quant Time: Mar 10 11:20:34 2020
 Quant Method : Z:\VOASRV\HPCHEM1\MSVOA_X\METHOD\82X030420W.M
 Quant Title : SW846 8260
 QLast Update : Wed Mar 04 14:19:10 2020
 Response via : Initial Calibration

Internal Standards	R.T.	QIon	Response	Conc	Units	Dev(Min)
1) Pentafluorobenzene	5.65	168	333238	50.00	ug/l	0.00
34) 1,4-Difluorobenzene	6.86	114	541462	50.00	ug/l	0.00
63) Chlorobenzene-d5	10.11	117	518415	50.00	ug/l	0.00
72) 1,4-Dichlorobenzene-d4	12.07	152	265005	50.00	ug/l	0.00

System Monitoring Compounds

33) 1,2-Dichloroethane-d4	6.05	65	205339	51.94	ug/l	0.00
Spiked Amount	50.000		Recovery	=	103.88%	
35) Dibromofluoromethane	5.49	113	168680	49.38	ug/l	0.00
Spiked Amount	50.000		Recovery	=	98.76%	
50) Toluene-d8	8.71	98	664067	51.11	ug/l	0.00
Spiked Amount	50.000		Recovery	=	102.22%	
62) 4-Bromofluorobenzene	11.13	95	235487	50.81	ug/l	0.00
Spiked Amount	50.000		Recovery	=	101.62%	

Target Compounds

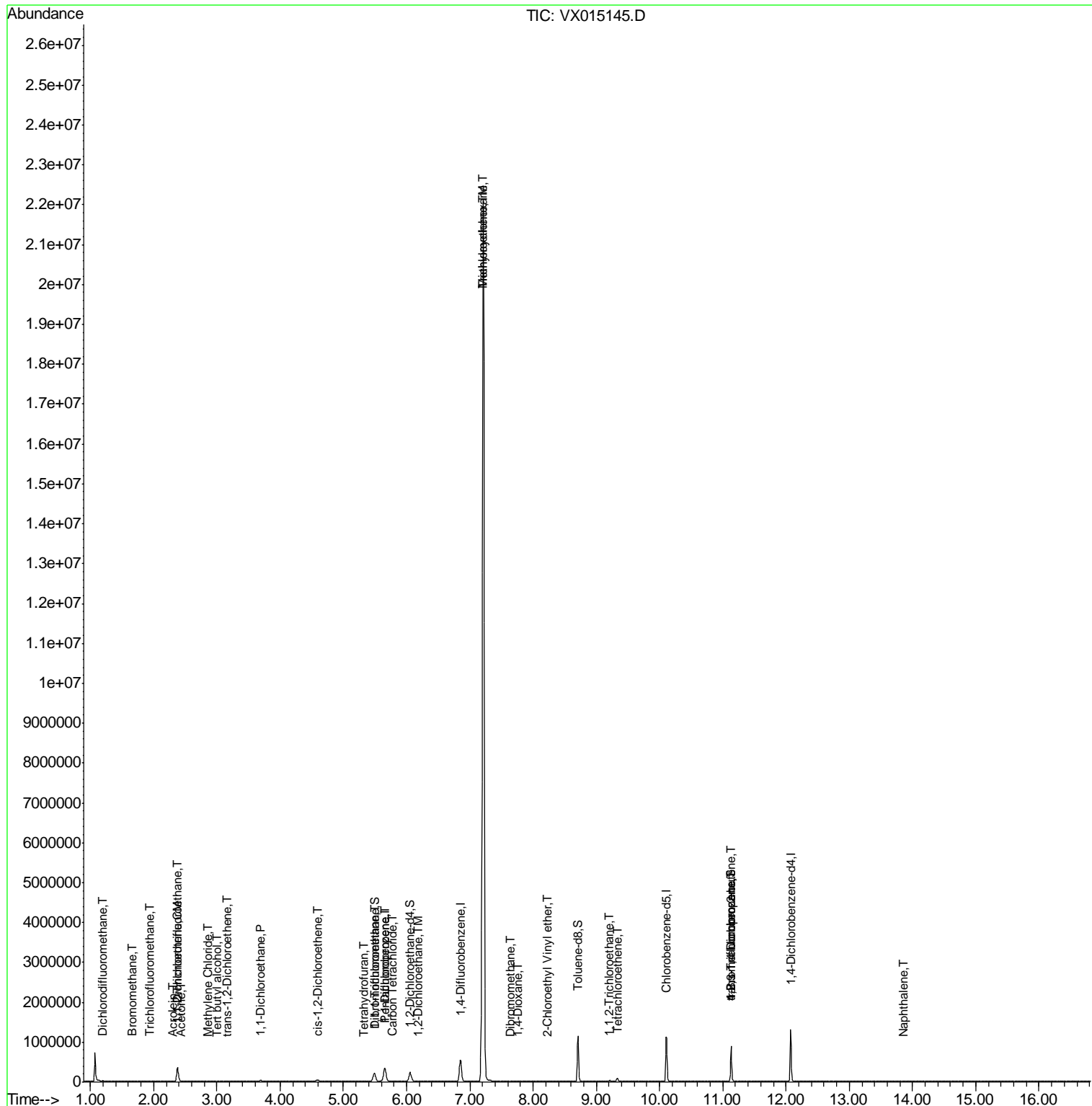
						Qvalue
2) Dichlorodifluoromethane	1.19	85	1466	0.50	ug/l	76
5) Bromomethane	1.65	94	1050	0.41	ug/l #	48
7) Trichlorofluoromethane	1.93	101	1294	0.26	ug/l #	76
9) 1,1,2-Trichlorotrifluoroet	2.38	101	114870	36.61	ug/l	99
11) Tert butyl alcohol	3.00	59	336	0.49	ug/l #	19
12) 1,1-Dichloroethene	2.37	96	36544	11.28	ug/l	97
13) Acrolein	2.30	56	283	0.44	ug/l #	15
16) Acetone	2.44	43	2745	1.71	ug/l	93
20) Methylene Chloride	2.85	84	1174	0.31	ug/l #	81
21) trans-1,2-Dichloroethene	3.17	96	1086	0.31	ug/l #	75
24) 1,1-Dichloroethane	3.69	63	14968	2.40	ug/l	98
27) cis-1,2-Dichloroethene	4.59	96	16581	4.27	ug/l	91
29) Tetrahydrofuran	5.33	42	381	0.25	ug/l	91
32) 1,1,1-Trichloroethane	5.48	97	3992	0.79	ug/l #	49
36) 1,1-Dichloropropene	5.65	75	23351	4.66	ug/l #	51
38) Carbon Tetrachloride	5.77	117	7472	1.58	ug/l #	89
39) Methylcyclohexane	7.21	83	98867	16.92	ug/l #	1
42) 1,2-Dichloroethane	6.18	62	3199	0.63	ug/l	94
44) Trichloroethene	7.21	130	8618802	2083.91	ug/l	96
46) Dibromomethane	7.64	93	537	0.21	ug/l #	31
49) 1,4-Dioxane	7.75	88	1303	14.50	ug/l #	50
55) 1,1,2-Trichloroethane	9.21	97	5161	1.38	ug/l #	84
58) 2-Chloroethyl Vinyl ether	8.23	63	792	0.27	ug/l	96
64) Tetrachloroethene	9.33	164	16390	3.82	ug/l	96
76) 1,2,3-Trichloropropane	11.13	75	118763	22.47	ug/l #	34
81) trans-1,4-Dichloro-2-buten	11.13	75	118763	63.76	ug/l #	11
95) Naphthalene	13.85	128	618	1.45	ug/l #	32

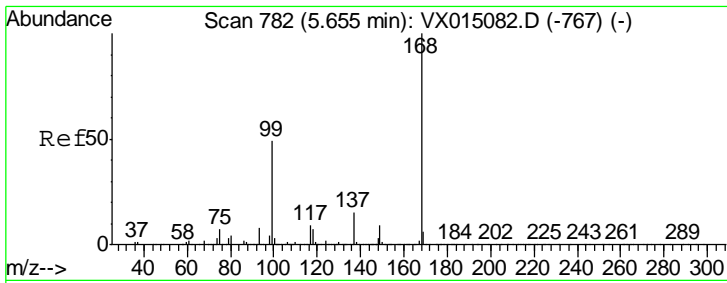
(#) = qualifier out of range (m) = manual integration (+) = signals summed

Data Path : Z:\VOASRV\HPCHEM1\MSVOA_X\DATA\VX030920\
 Data File : VX015145.D
 Acq On : 09 Mar 2020 16:06
 Operator : JC/SP
 Sample : L1842-11
 Misc : 5.0mL/MSVOA_X/WATER
 ALS Vial : 16 Sample Multiplier: 1

Instrument :
 MSVOA_X
 ClientSampleID :
 RE132D6-20200304

Quant Time: Mar 10 11:20:34 2020
 Quant Method : Z:\VOASRV\HPCHEM1\MSVOA_X\METHOD\82X030420W.M
 Quant Title : SW846 8260
 QLast Update : Wed Mar 04 14:19:10 2020
 Response via : Initial Calibration

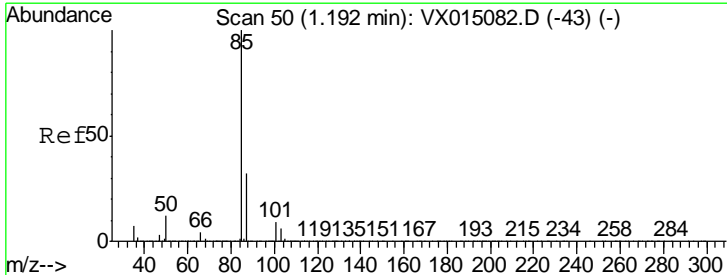
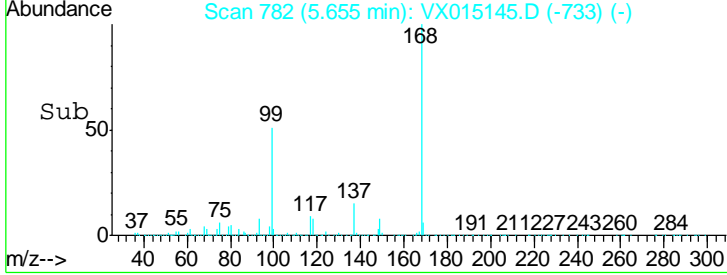
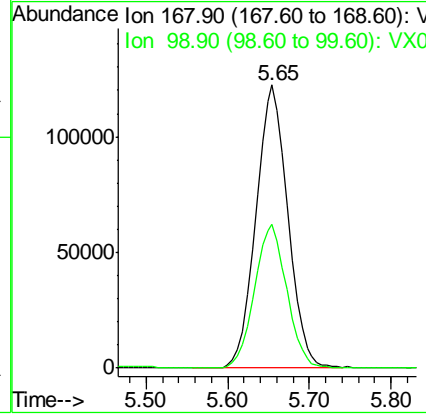
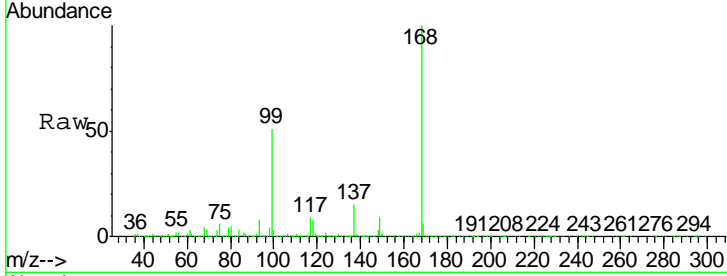




#1
 Pentafluorobenzene
 Concen: 50.00 ug/l
 RT: 5.65 min Scan# 782
 Delta R.T. 0.00 min
 Lab File: VX015145.D
 Acq: 09 Mar 2020 16:06

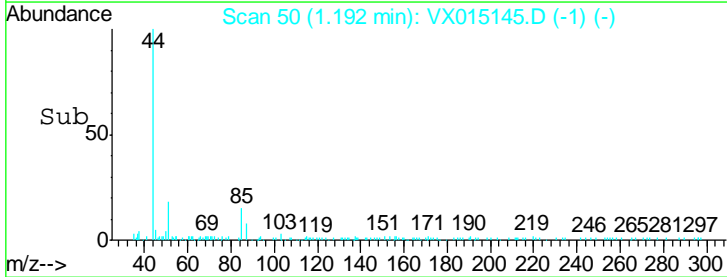
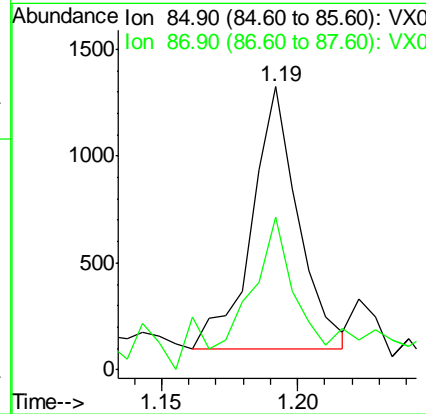
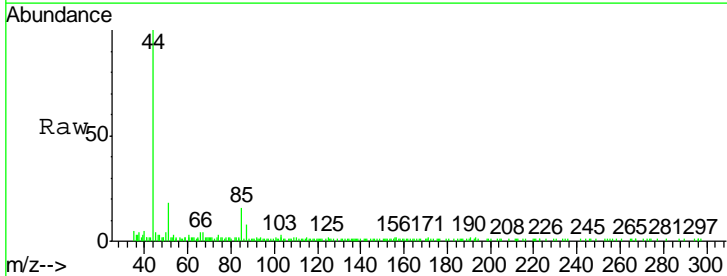
Instrument : MSVOA_X
 ClientSampleID : RE132D6-20200304

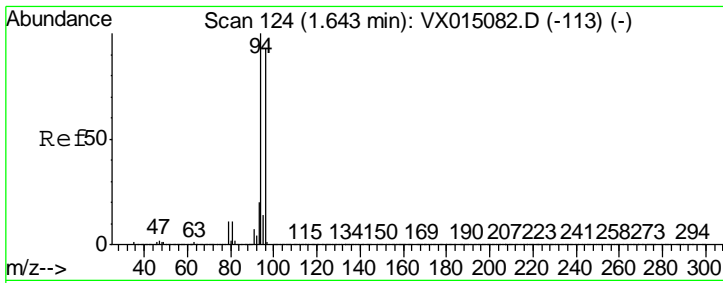
Tgt Ion: 168 Resp: 333238
 Ion Ratio Lower Upper
 168 100
 99 50.7 39.4 59.2



#2
 Dichlorodifluoromethane
 Concen: 0.50 ug/l
 RT: 1.19 min Scan# 50
 Delta R.T. 0.00 min
 Lab File: VX015145.D
 Acq: 09 Mar 2020 16:06

Tgt Ion: 85 Resp: 1466
 Ion Ratio Lower Upper
 85 100
 87 45.5 16.2 48.5

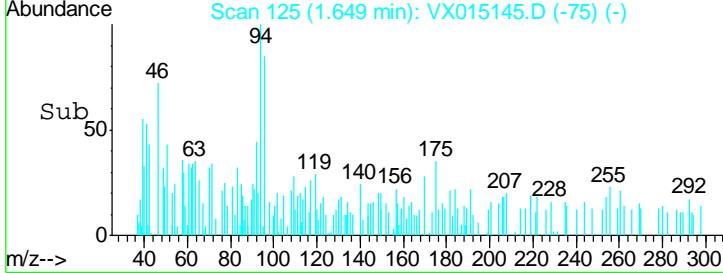
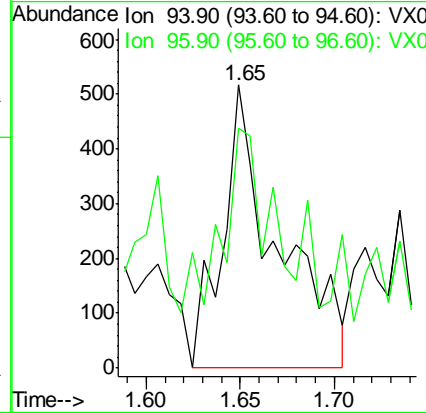
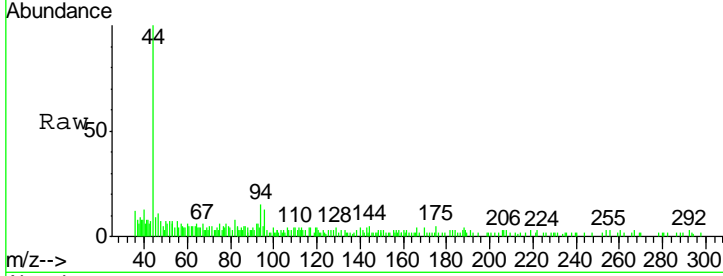




#5
 Bromomethane
 Concen: 0.41 ug/l
 RT: 1.65 min Scan# 125
 Delta R.T. 0.01 min
 Lab File: VX015145.D
 Acq: 09 Mar 2020 16:06

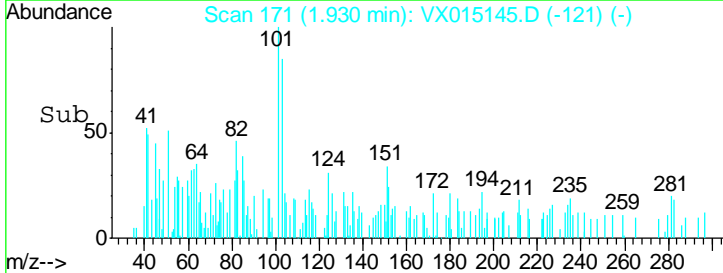
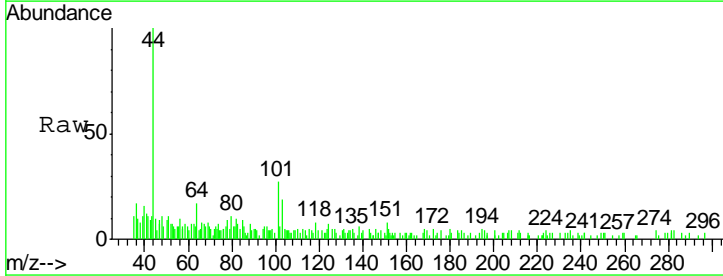
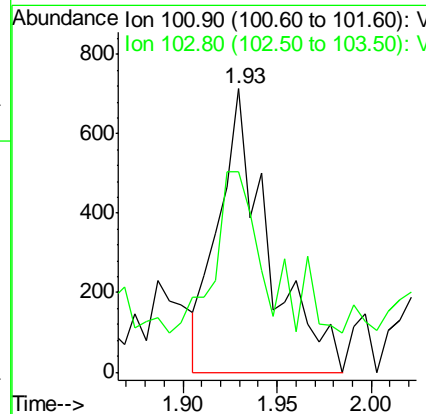
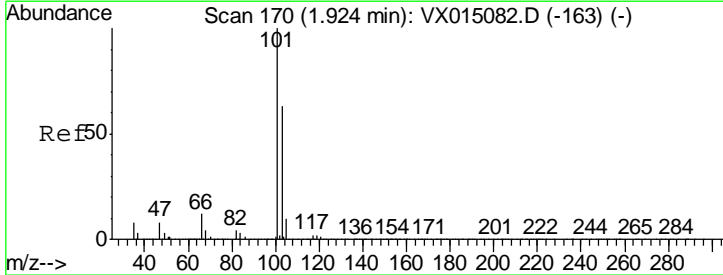
Instrument : MSVOA_X
 ClientSampleId : RE132D6-20200304

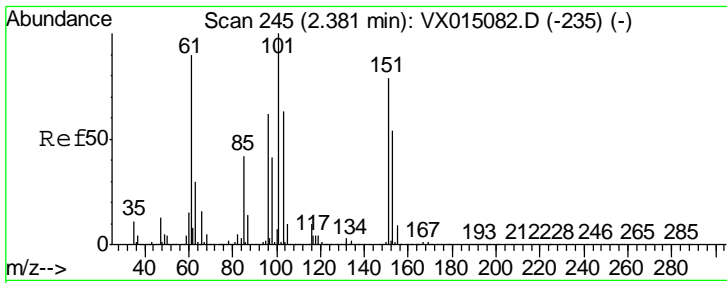
Tgt Ion: 94 Resp: 1050
 Ion Ratio Lower Upper
 94 100
 96 43.5 74.6 111.8#



#7
 Trichlorofluoromethane
 Concen: 0.26 ug/l
 RT: 1.93 min Scan# 171
 Delta R.T. 0.01 min
 Lab File: VX015145.D
 Acq: 09 Mar 2020 16:06

Tgt Ion: 101 Resp: 1294
 Ion Ratio Lower Upper
 101 100
 103 44.6 50.4 75.6#

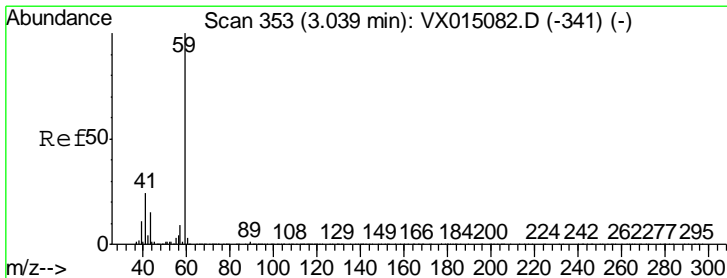
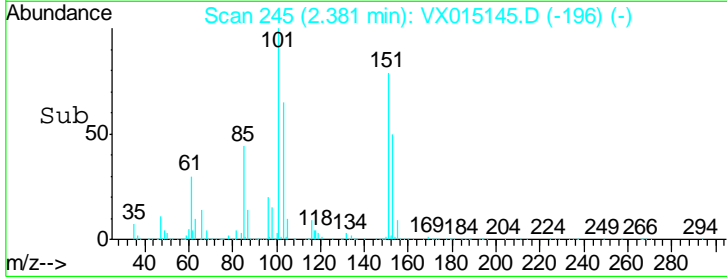
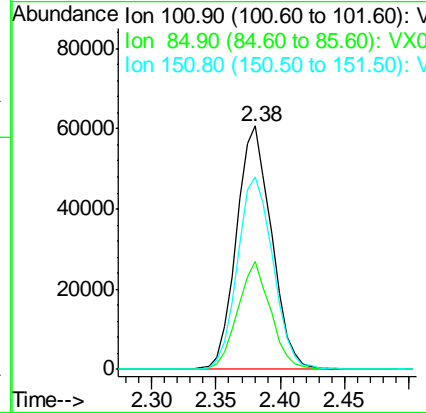
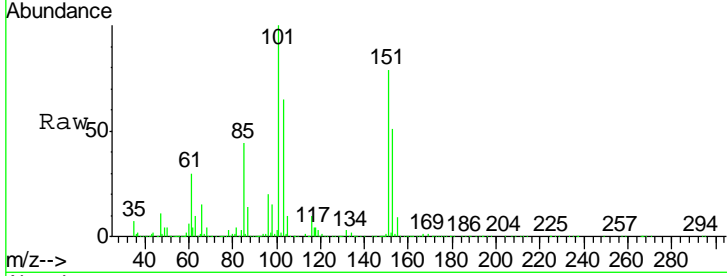




#9
 1,1,2-Trichlorotrifluoroethane
 Concen: 36.61 ug/l
 RT: 2.38 min Scan# 245
 Delta R.T. 0.00 min
 Lab File: VX015145.D
 Acq: 09 Mar 2020 16:06

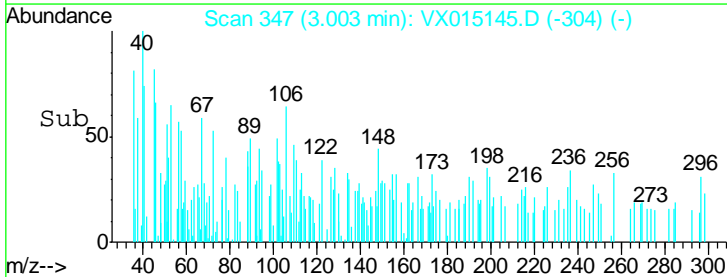
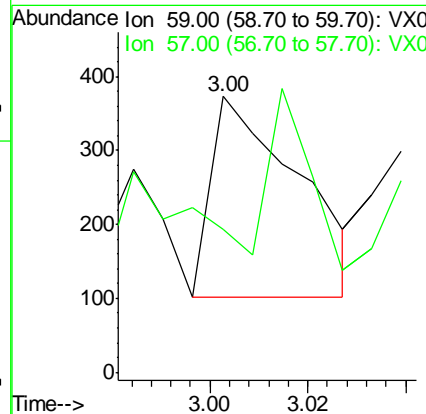
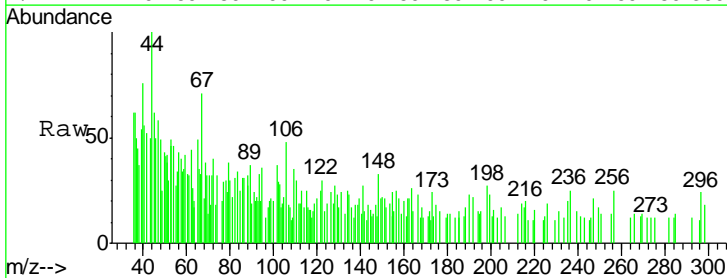
Instrument :
 MSVOA_X
ClientSampled :
 RE132D6-20200304

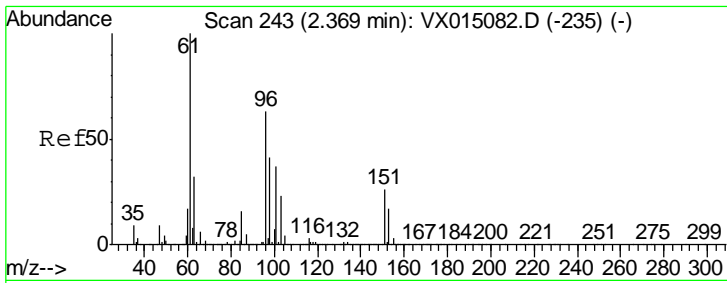
Tgt Ion	Resp	Lower	Upper
101	114870		
85	41.2	33.7	50.5
151	80.3	64.0	96.0



#11
 Tert butyl alcohol
 Concen: 0.49 ug/l
 RT: 3.00 min Scan# 347
 Delta R.T. -0.04 min
 Lab File: VX015145.D
 Acq: 09 Mar 2020 16:06

Tgt Ion	Resp	Lower	Upper
59	336		
57	40.5	8.2	12.4#

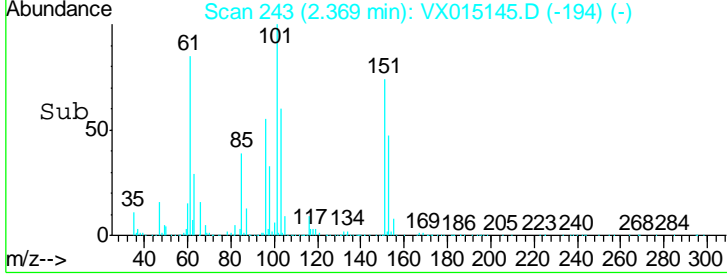
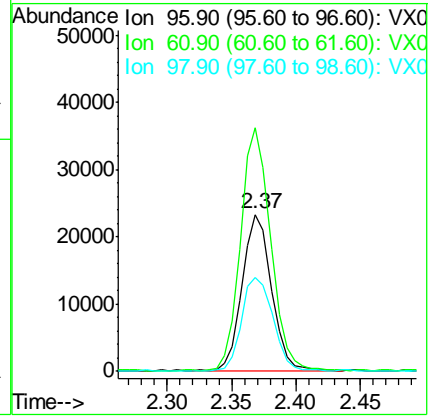
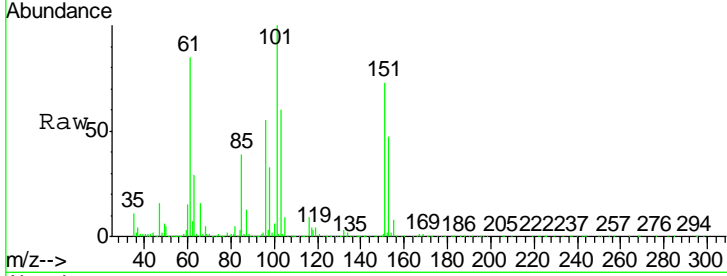




#12
 1,1-Dichloroethene
 Concen: 11.28 ug/l
 RT: 2.37 min Scan# 243
 Delta R.T. 0.00 min
 Lab File: VX015145.D
 Acq: 09 Mar 2020 16:06

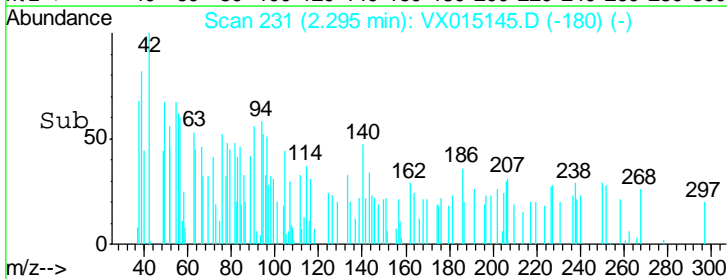
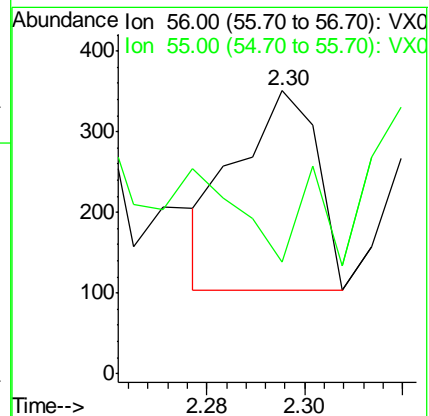
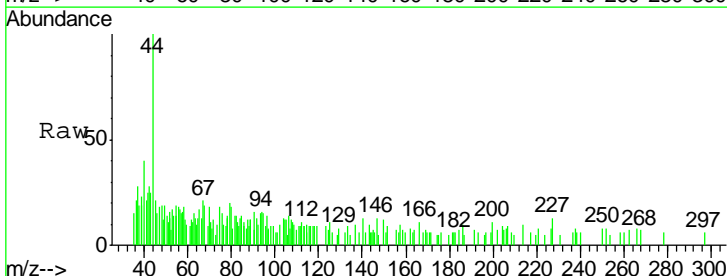
Instrument : MSVOA_X
 ClientSampleId : RE132D6-20200304

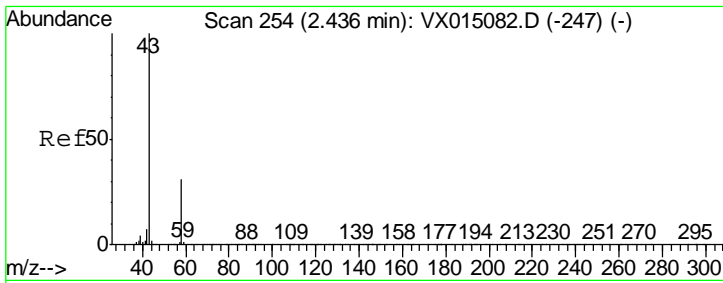
Tgt Ion	Resp	Lower	Upper
96	36544		
61	100	126.2	189.4
98	59.4	51.4	77.0



#13
 Acrolein
 Concen: 0.44 ug/l
 RT: 2.30 min Scan# 231
 Delta R.T. 0.01 min
 Lab File: VX015145.D
 Acq: 09 Mar 2020 16:06

Tgt Ion	Resp	Lower	Upper
56	283		
55	100	55.4	83.0#

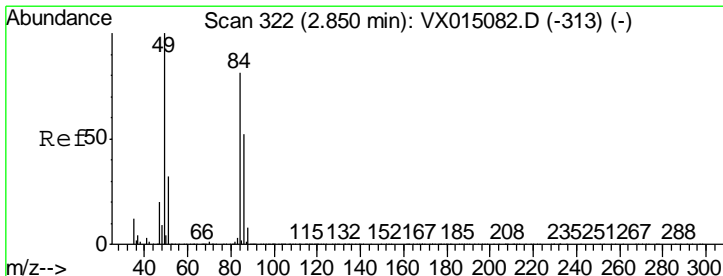
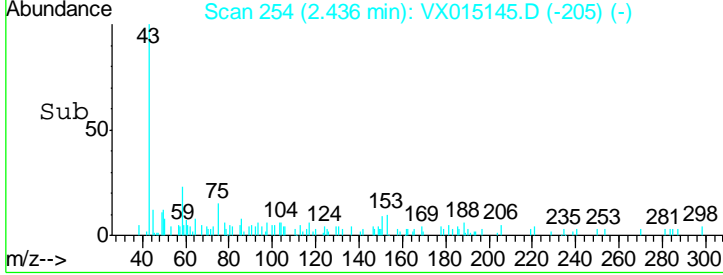
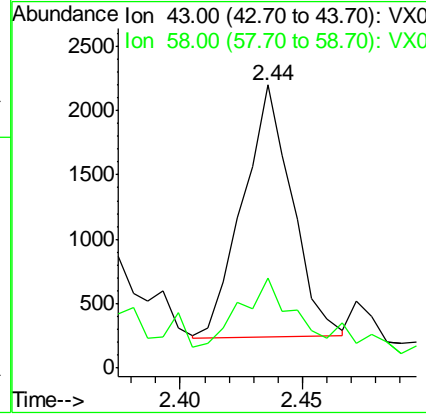
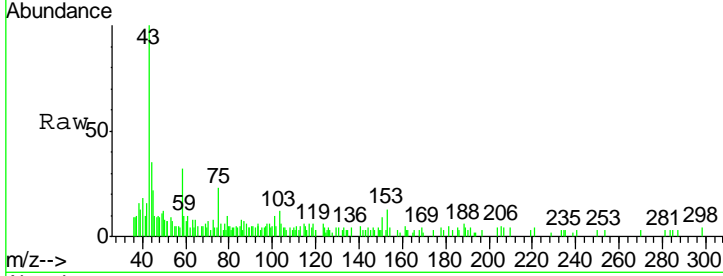




#16
 Acetone
 Concen: 1.71 ug/l
 RT: 2.44 min Scan# 254
 Delta R.T. 0.00 min
 Lab File: VX015145.D
 Acq: 09 Mar 2020 16:06

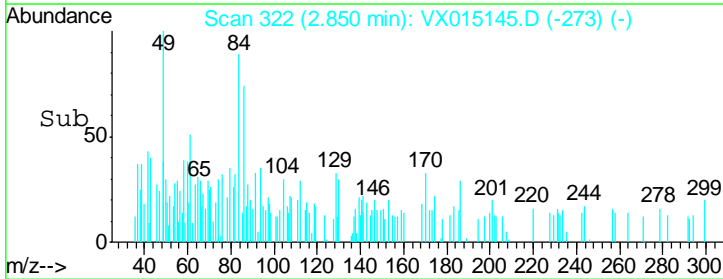
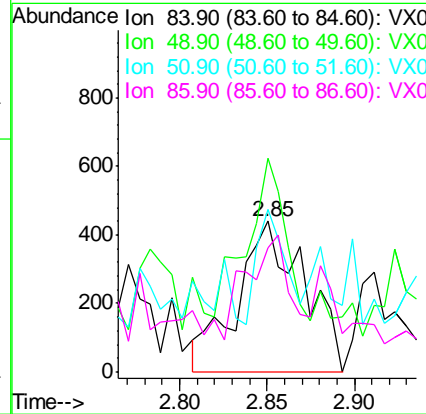
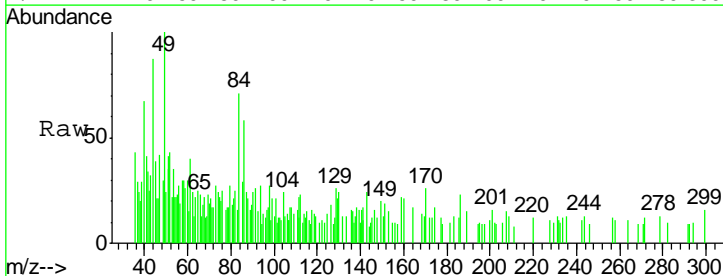
Instrument : MSVOA_X
 ClientSampleId : RE132D6-20200304

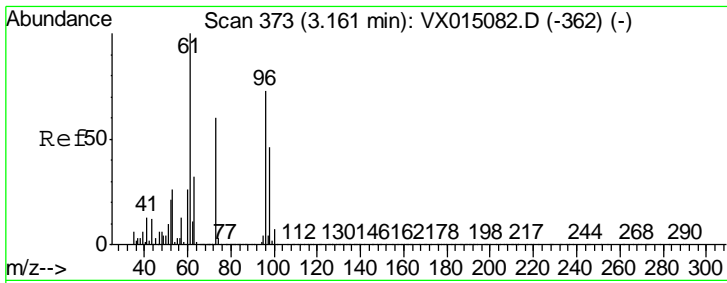
Tgt Ion	Resp	Lower	Upper
43	100		
58	27.4	24.8	37.2



#20
 Methylene Chloride
 Concen: 0.31 ug/l
 RT: 2.85 min Scan# 322
 Delta R.T. -0.00 min
 Lab File: VX015145.D
 Acq: 09 Mar 2020 16:06

Tgt Ion	Resp	Lower	Upper
84	100		
49	105.2	99.4	149.2
51	64.1	31.5	47.3#
86	57.5	51.6	77.4

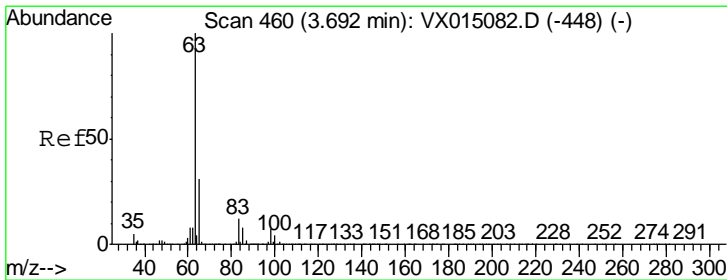
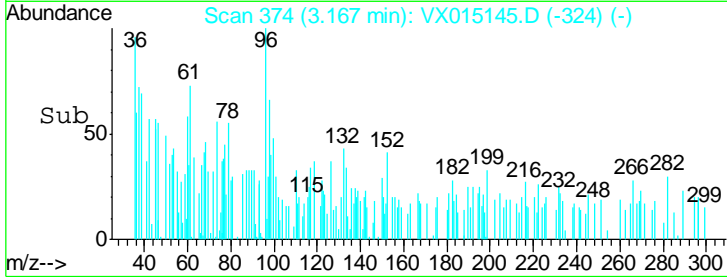
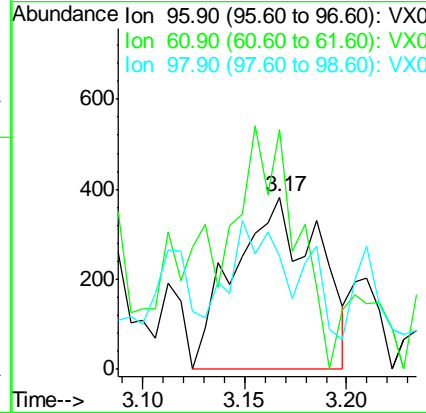
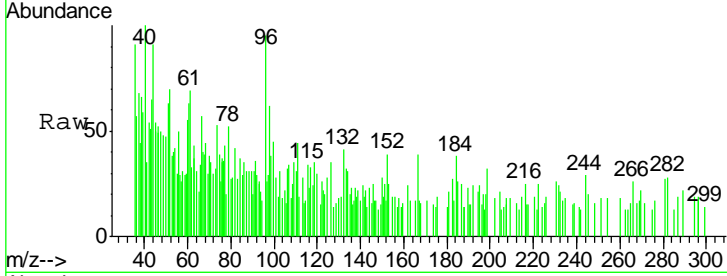




#21
 trans-1,2-Dichloroethene
 Concen: 0.31 ug/l
 RT: 3.17 min Scan# 374
 Delta R.T. 0.01 min
 Lab File: VX015145.D
 Acq: 09 Mar 2020 16:06

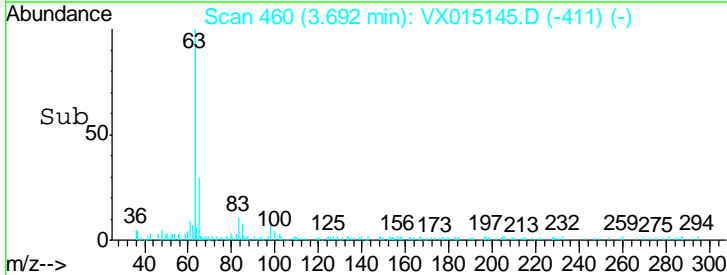
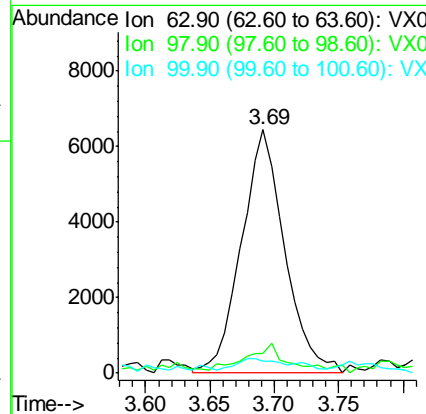
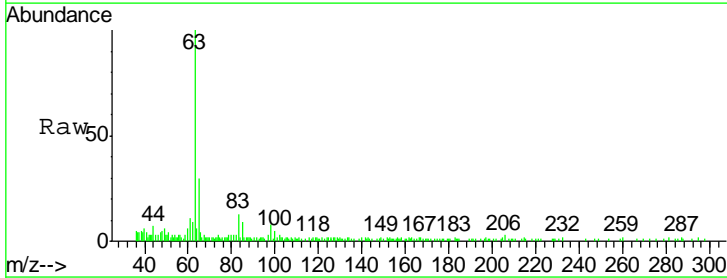
Instrument :
 MSVOA_X
ClientSampled :
 RE132D6-20200304

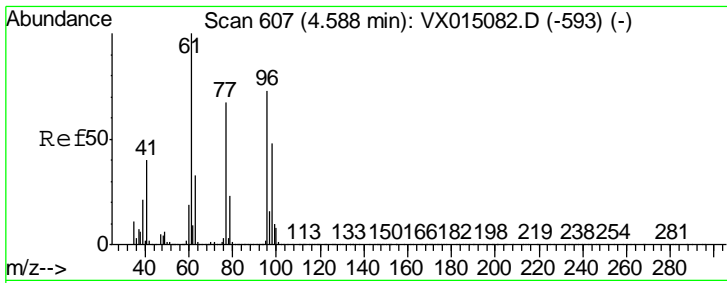
Tgt Ion	Resp	Lower	Upper
96	1086		
61	104.2	109.9	164.9#
98	48.3	50.2	75.2#



#24
 1,1-Dichloroethane
 Concen: 2.40 ug/l
 RT: 3.69 min Scan# 460
 Delta R.T. 0.00 min
 Lab File: VX015145.D
 Acq: 09 Mar 2020 16:06

Tgt Ion	Resp	Lower	Upper
63	14968		
98	6.6	3.7	11.1
100	3.6	2.1	6.5

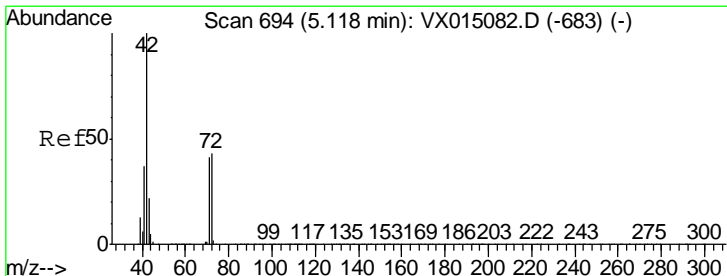
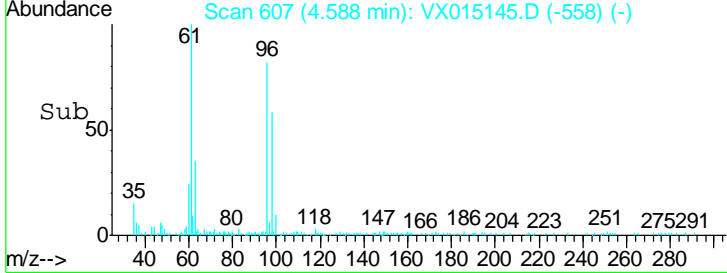
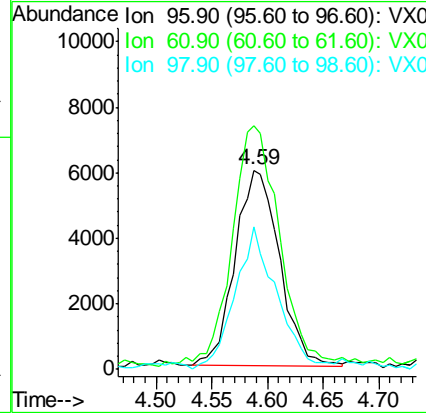
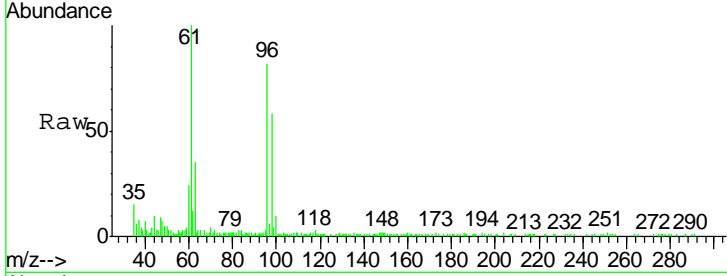




#27
 cis-1,2-Dichloroethene
 Concen: 4.27 ug/l
 RT: 4.59 min Scan# 607
 Delta R.T. 0.00 min
 Lab File: VX015145.D
 Acq: 09 Mar 2020 16:06

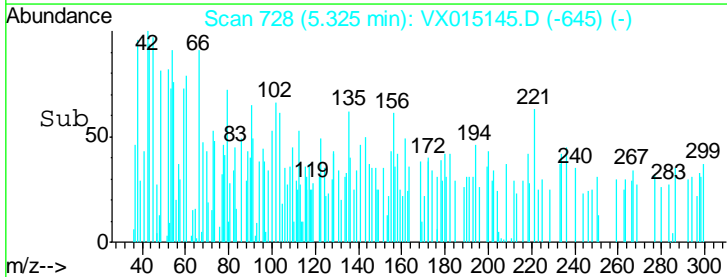
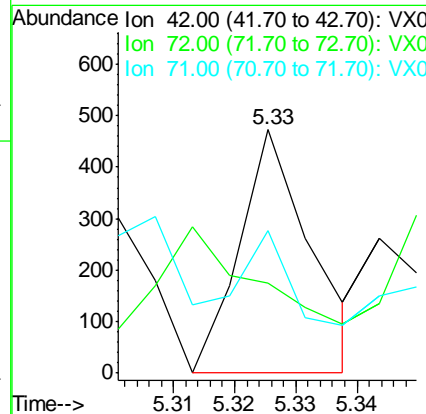
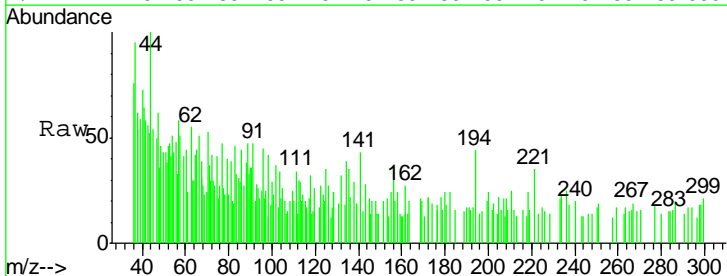
Instrument :
 MSVOA_X
ClientSampled :
 RE132D6-20200304

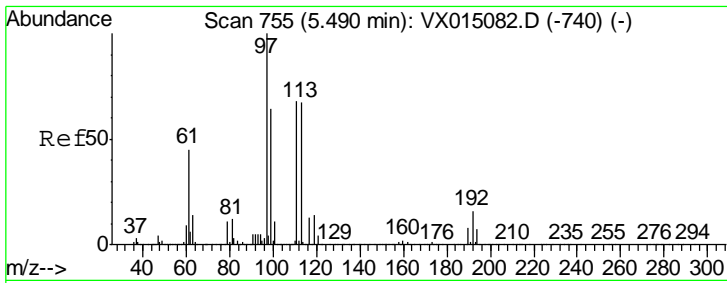
Tgt Ion	Resp	Lower	Upper
96	16581		
61	130.8	0.0	286.8
98	68.5	0.0	128.4



#29
 Tetrahydrofuran
 Concen: 0.25 ug/l
 RT: 5.33 min Scan# 728
 Delta R.T. 0.21 min
 Lab File: VX015145.D
 Acq: 09 Mar 2020 16:06

Tgt Ion	Resp	Lower	Upper
42	381		
72	53.0	36.4	54.6
71	37.3	33.3	49.9

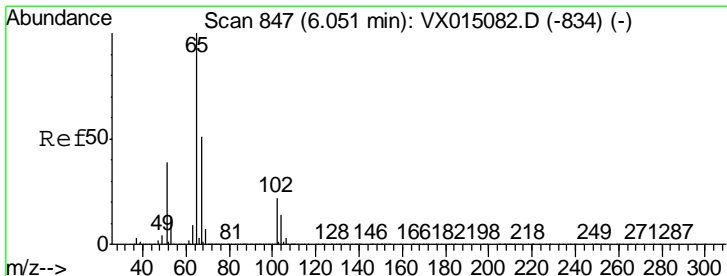
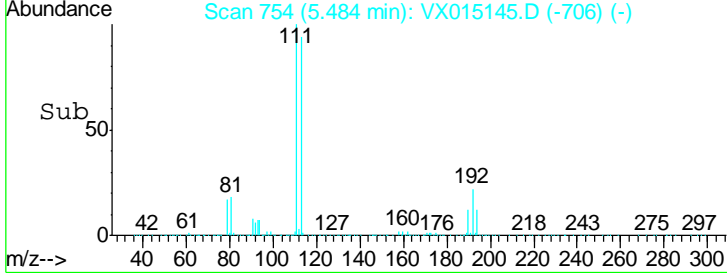
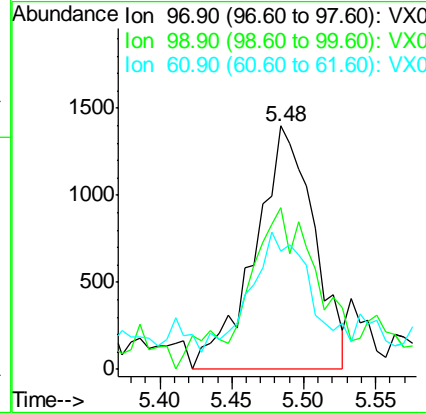
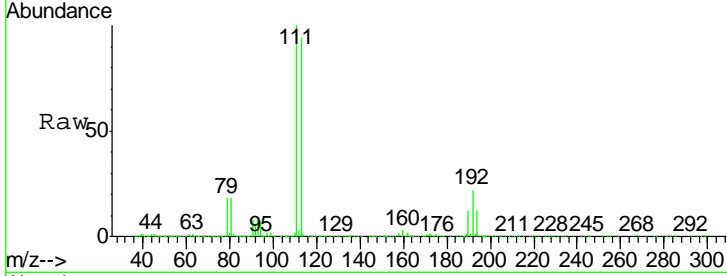




#32
 1,1,1-Trichloroethane
 Concen: 0.79 ug/l
 RT: 5.48 min Scan# 754
 Delta R.T. -0.01 min
 Lab File: VX015145.D
 Acq: 09 Mar 2020 16:06

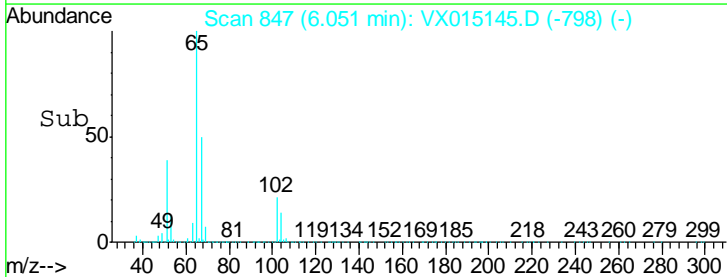
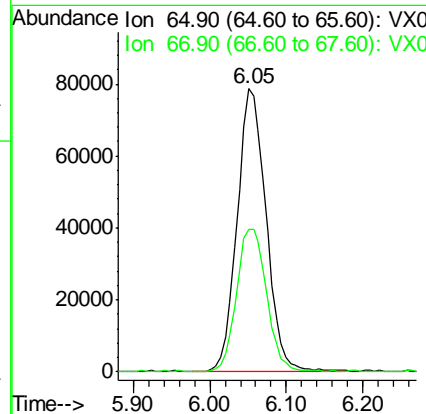
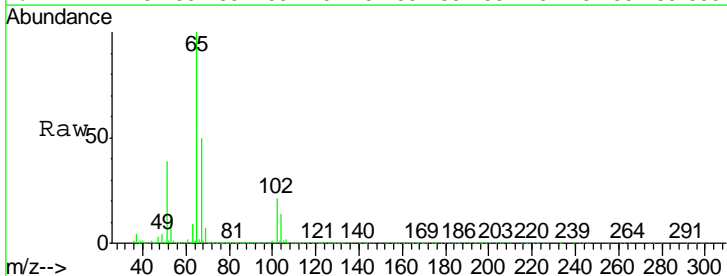
Instrument : MSVOA_X
 ClientSampled : RE132D6-20200304

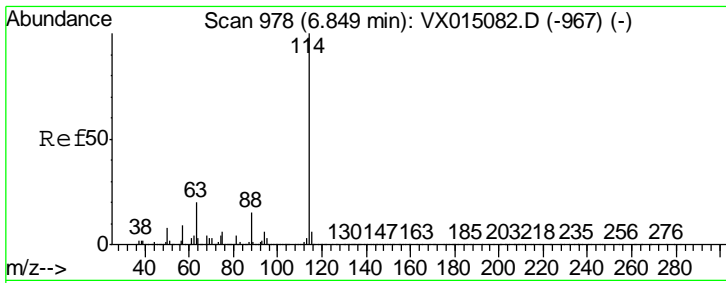
Tgt Ion	Resp	Lower	Upper
97	100		
99	0.0	52.8	79.2#
61	48.9	36.6	54.8



#33
 1,2-Dichloroethane-d4
 Concen: 51.94 ug/l
 RT: 6.05 min Scan# 847
 Delta R.T. 0.00 min
 Lab File: VX015145.D
 Acq: 09 Mar 2020 16:06

Tgt Ion	Resp	Lower	Upper
65	100		
67	52.9	0.0	105.6

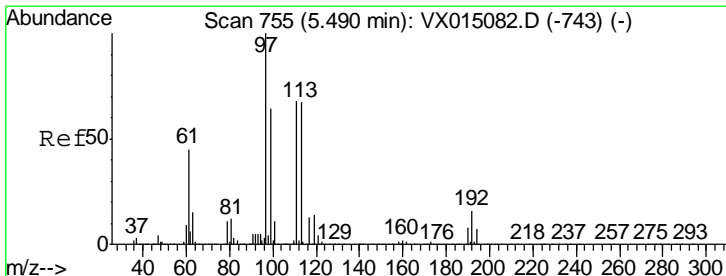
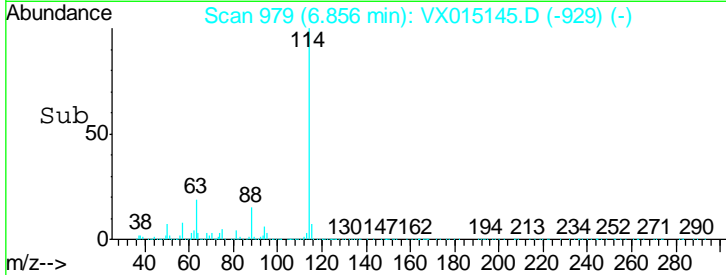
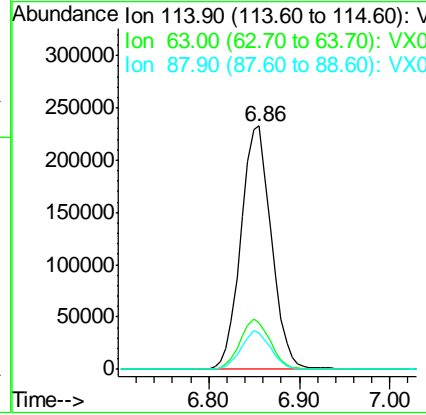
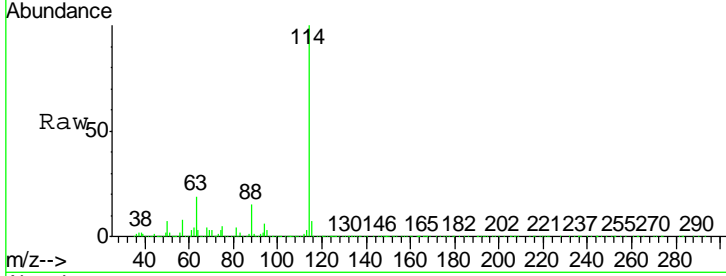




#34
 1,4-Difluorobenzene
 Concen: 50.00 ug/l
 RT: 6.86 min Scan# 979
 Delta R.T. 0.01 min
 Lab File: VX015145.D
 Acq: 09 Mar 2020 16:06

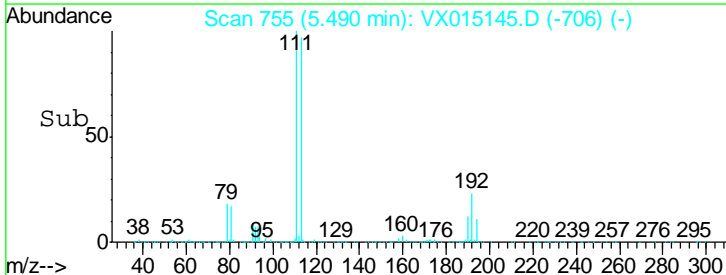
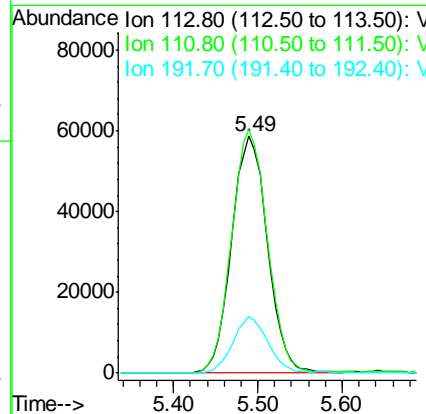
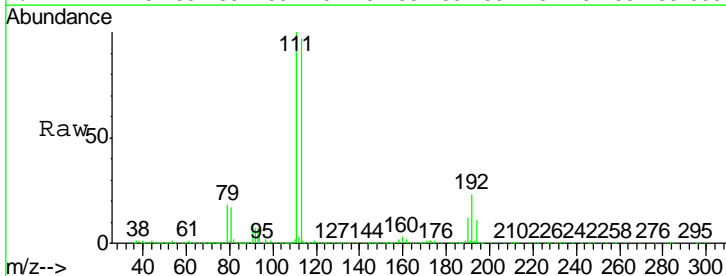
Instrument : MSVOA_X
 ClientSampleId : RE132D6-20200304

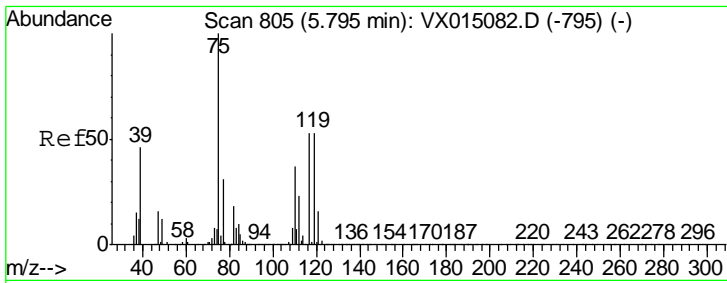
Tgt Ion	Resp	Lower	Upper
114	100		
63	19.0	0.0	40.0
88	14.9	0.0	30.6



#35
 Dibromofluoromethane
 Concen: 49.38 ug/l
 RT: 5.49 min Scan# 755
 Delta R.T. 0.00 min
 Lab File: VX015145.D
 Acq: 09 Mar 2020 16:06

Tgt Ion	Resp	Lower	Upper
113	100		
111	103.0	82.6	123.8
192	23.5	18.6	28.0

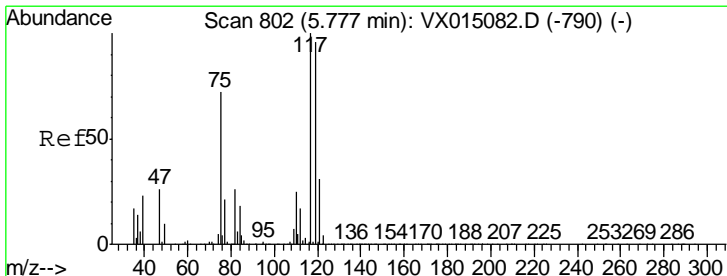
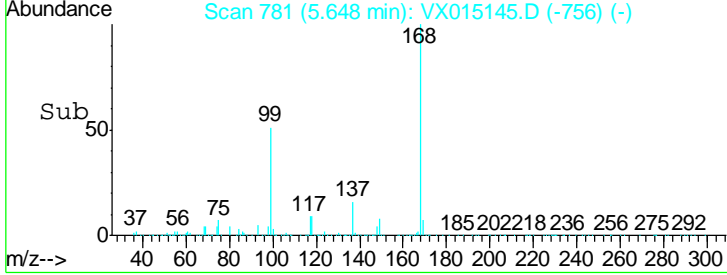
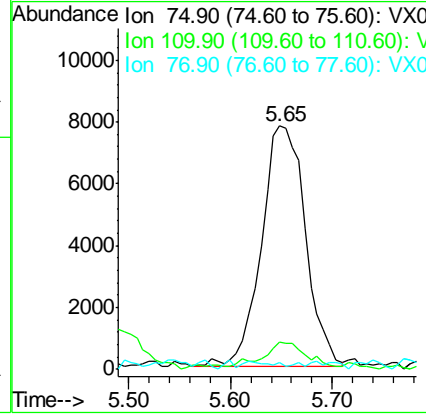
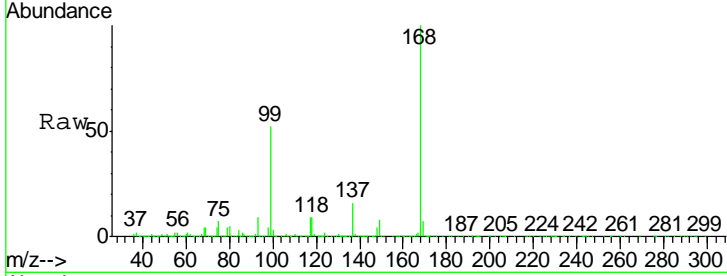




#36
 1,1-Dichloropropene
 Concen: 4.66 ug/l
 RT: 5.65 min Scan# 781
 Delta R.T. -0.15 min
 Lab File: VX015145.D
 Acq: 09 Mar 2020 16:06

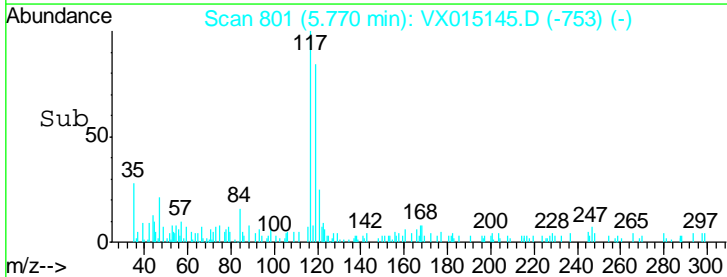
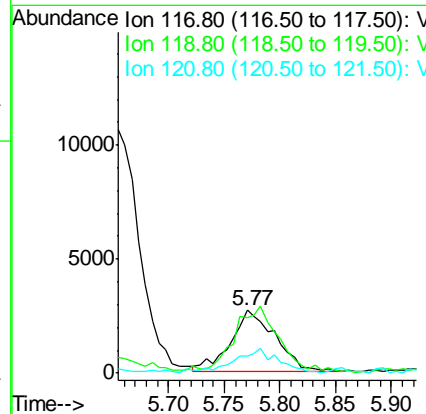
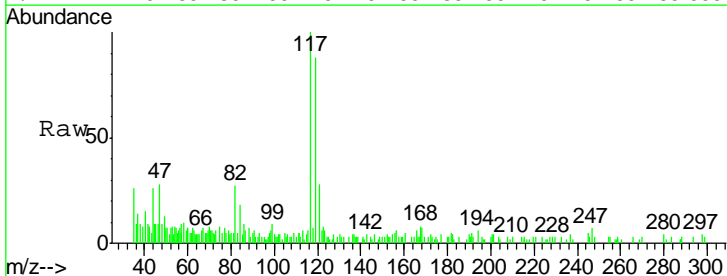
Instrument : MSVOA_X
 ClientSampleID : RE132D6-20200304

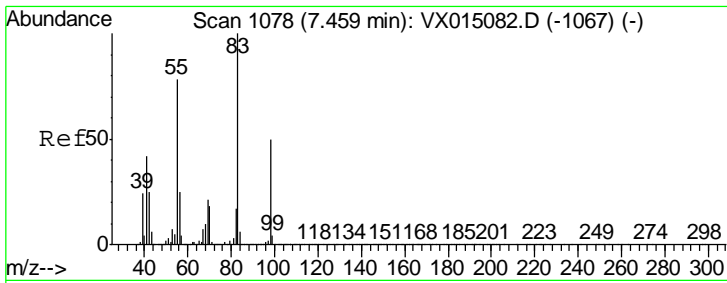
Tgt Ion	Resp	Lower	Upper
75	23351		
110	10.9	17.9	53.8#
77	0.0	24.8	37.2#



#38
 Carbon Tetrachloride
 Concen: 1.58 ug/l
 RT: 5.77 min Scan# 801
 Delta R.T. -0.01 min
 Lab File: VX015145.D
 Acq: 09 Mar 2020 16:06

Tgt Ion	Resp	Lower	Upper
117	7472		
119	86.6	76.9	115.3
121	23.5	24.6	37.0#

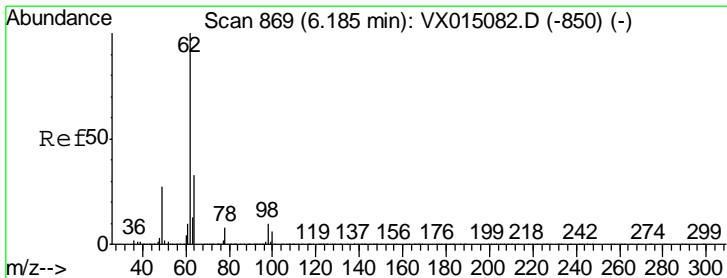
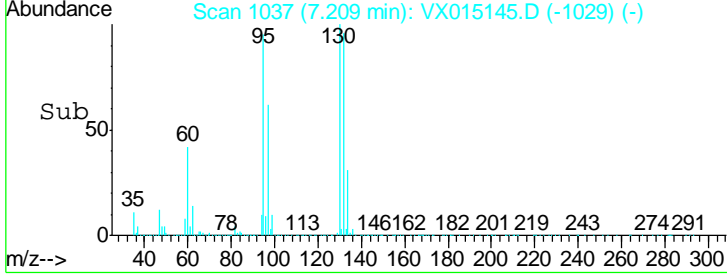
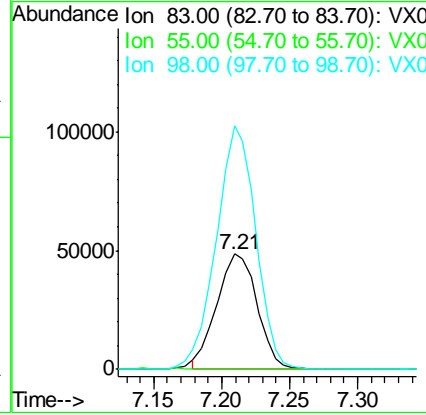
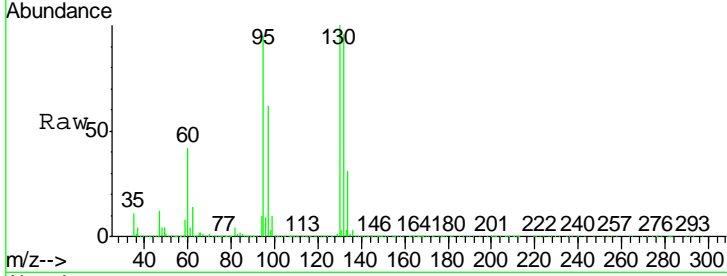




#39
 Methylcyclohexane
 Concen: 16.92 ug/l
 RT: 7.21 min Scan# 1037
 Delta R.T. -0.25 min
 Lab File: VX015145.D
 Acq: 09 Mar 2020 16:06

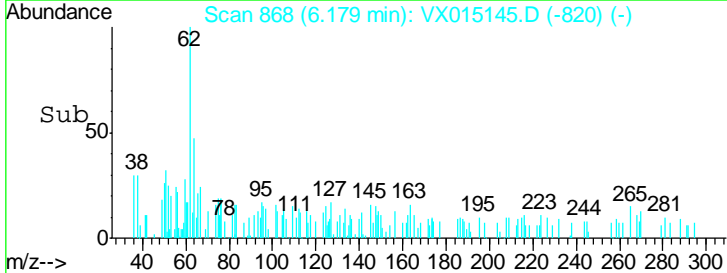
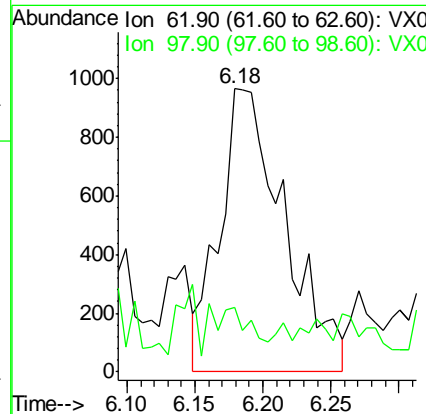
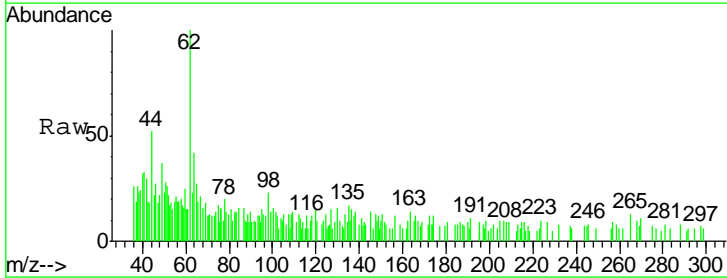
Instrument :
 MSVOA_X
 ClientSampled :
 RE132D6-20200304

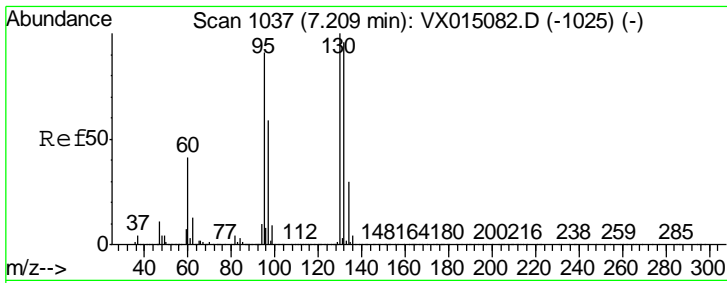
Tgt Ion	Resp	Lower	Upper
83	98867		
55	0.1	62.4	93.6#
98	211.1	39.7	59.5#



#42
 1,2-Dichloroethane
 Concen: 0.63 ug/l
 RT: 6.18 min Scan# 868
 Delta R.T. -0.01 min
 Lab File: VX015145.D
 Acq: 09 Mar 2020 16:06

Tgt Ion	Resp	Lower	Upper
62	3199		
98	8.1	0.0	20.6





#44

Trichloroethene

Concen: 2083.91 ug/l

RT: 7.21 min Scan# 1037

Delta R.T. 0.00 min

Lab File: VX015145.D

Acq: 09 Mar 2020 16:06

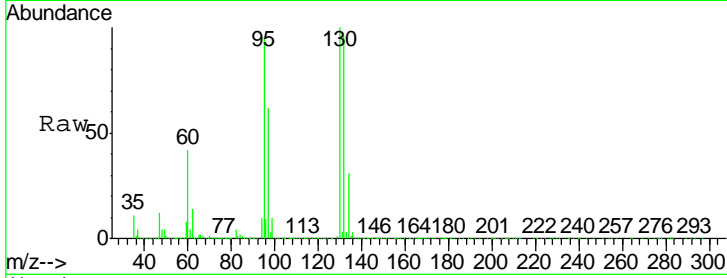
Instrument :
MSVOA_X
ClientSampleId :
RE132D6-20200304

Tgt Ion:130 Resp: 8618802

Ion Ratio Lower Upper

130 100

95 94.5 0.0 181.2



Abundance Ion 129.80 (129.50 to 130.50): V

Ion 94.90 (94.60 to 95.60): VX0

7.21

4000000

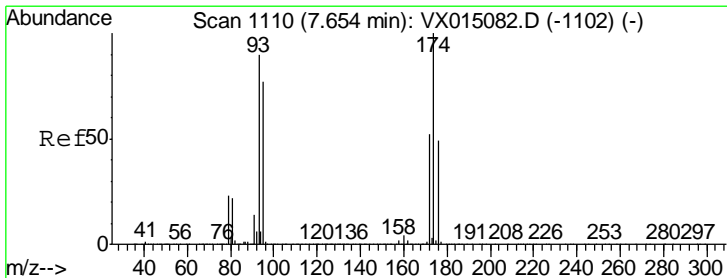
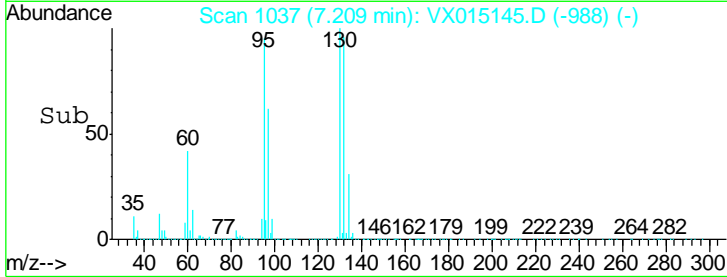
3000000

2000000

1000000

0

7.10 7.20 7.30 7.40



#46

Dibromomethane

Concen: 0.21 ug/l

RT: 7.64 min Scan# 1107

Delta R.T. -0.02 min

Lab File: VX015145.D

Acq: 09 Mar 2020 16:06

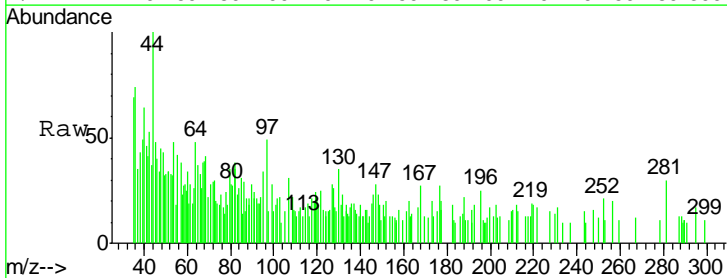
Tgt Ion: 93 Resp: 537

Ion Ratio Lower Upper

93 100

95 34.5 67.8 101.8#

174 28.3 91.0 136.4#



Abundance Ion 92.80 (92.50 to 93.50): VX0

Ion 94.80 (94.50 to 95.50): VX0

Ion 173.70 (173.40 to 174.40): V

7.64

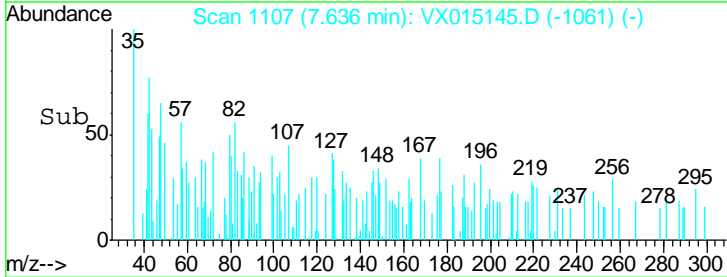
600

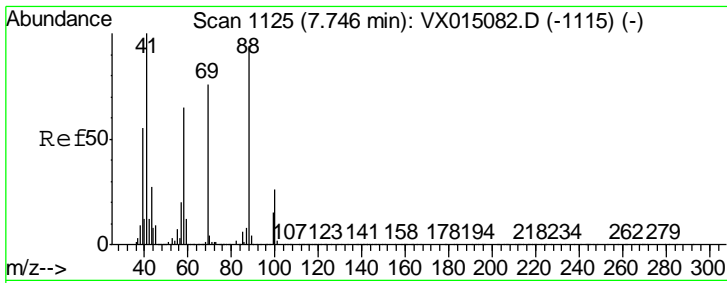
400

200

0

7.60 7.65

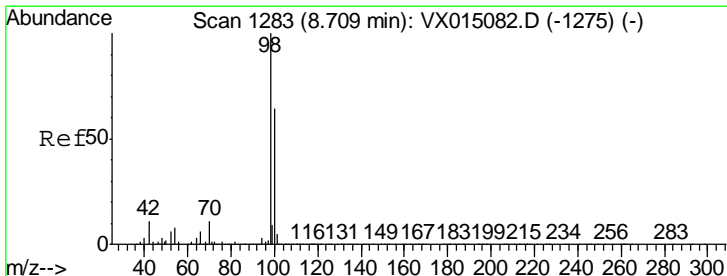
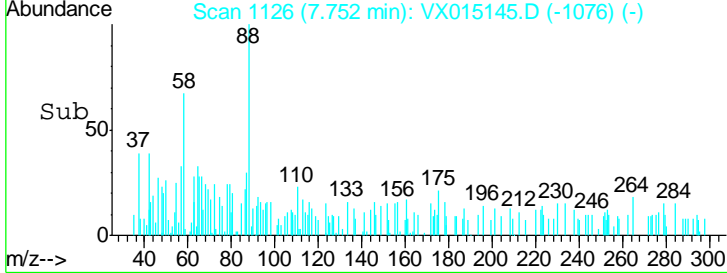
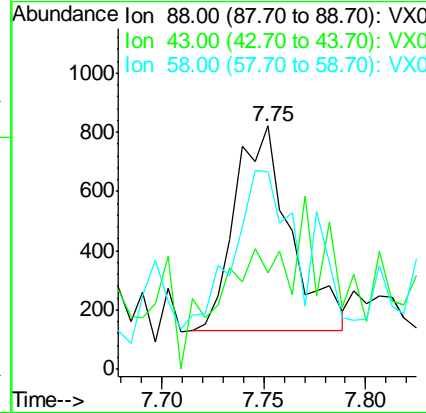
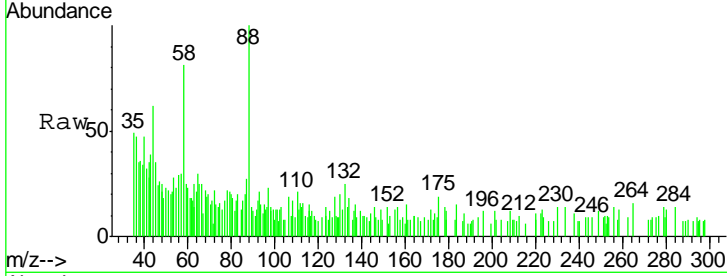




#49
 1,4-Dioxane
 Concen: 14.50 ug/l
 RT: 7.75 min Scan# 1126
 Delta R.T. 0.01 min
 Lab File: VX015145.D
 Acq: 09 Mar 2020 16:06

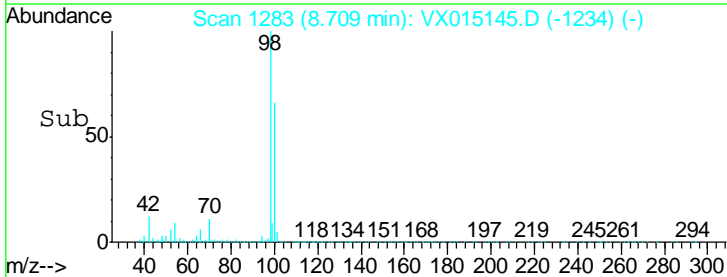
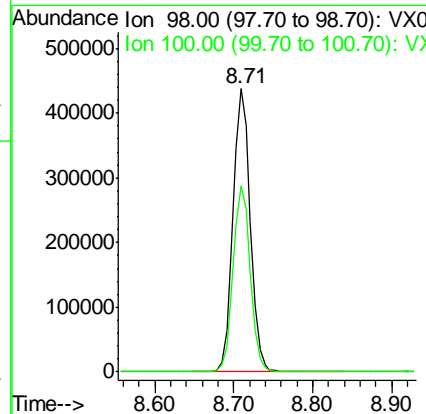
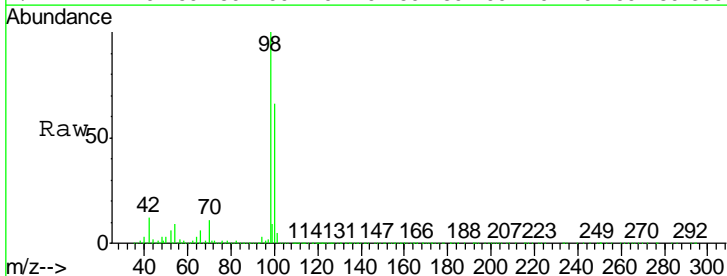
Instrument :
 MSVOA_X
ClientSampled :
 RE132D6-20200304

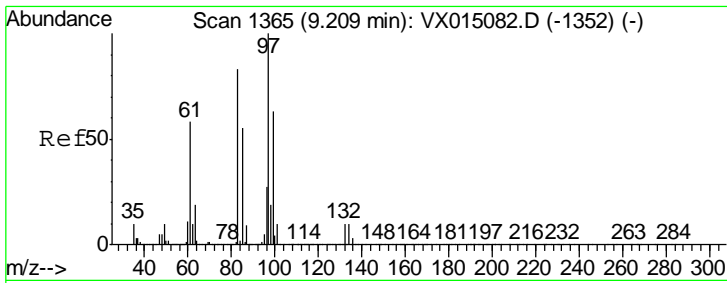
Tgt Ion	Resp	Lower	Upper
88	1303		
43	56.1	27.0	40.4#
58	115.0	55.6	83.4#



#50
 Toluene-d8
 Concen: 51.11 ug/l
 RT: 8.71 min Scan# 1283
 Delta R.T. 0.00 min
 Lab File: VX015145.D
 Acq: 09 Mar 2020 16:06

Tgt Ion	Resp	Lower	Upper
98	664067		
100	65.3	52.4	78.6

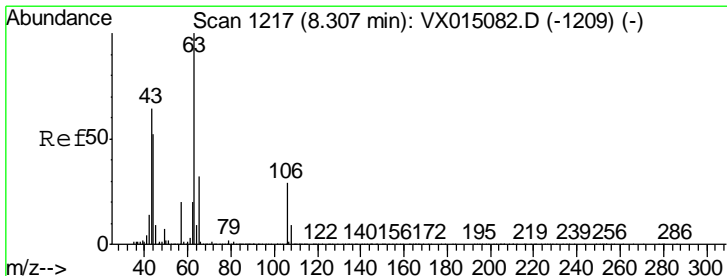
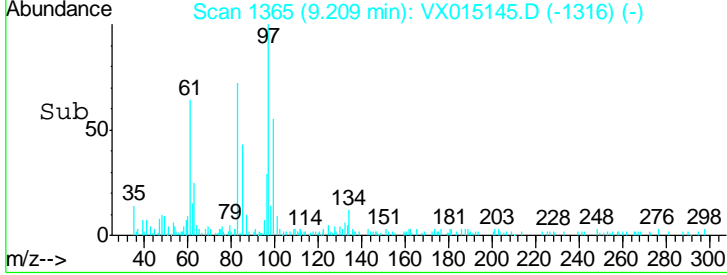
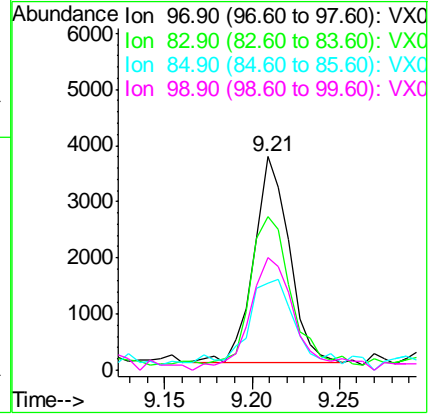
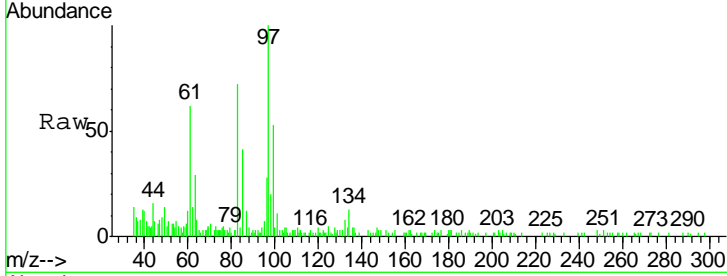




#55
 1,1,2-Trichloroethane
 Concen: 1.38 ug/l
 RT: 9.21 min Scan# 1365
 Delta R.T. 0.00 min
 Lab File: VX015145.D
 Acq: 09 Mar 2020 16:06

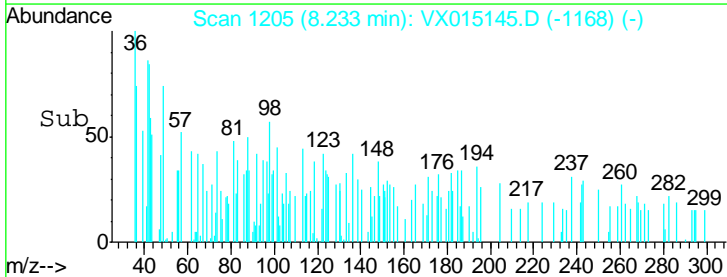
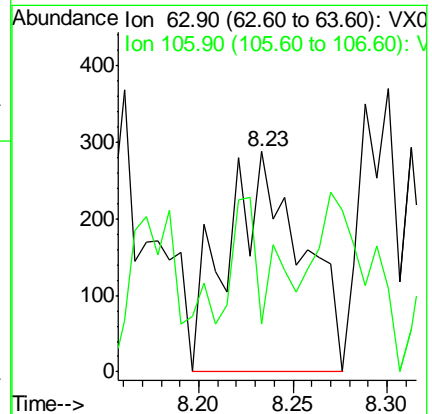
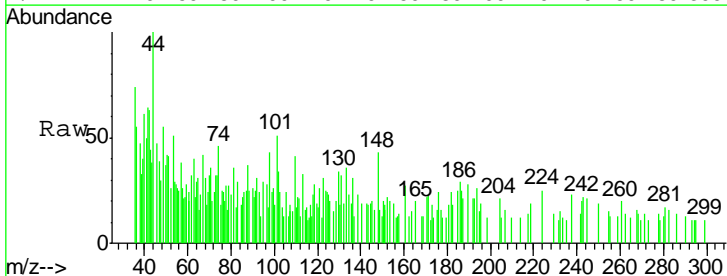
Instrument :
 MSVOA_X
ClientSampleId :
 RE132D6-20200304

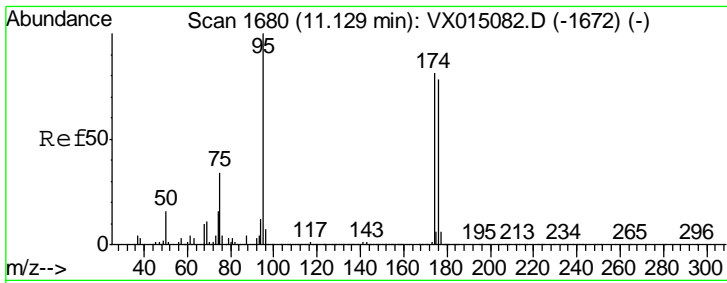
Tgt Ion	Resp	Lower	Upper
97	100		
83	70.1	66.4	99.6
85	39.5	43.5	65.3#
99	51.8	50.7	76.1



#58
 2-Chloroethyl Vinyl ether
 Concen: 0.27 ug/l
 RT: 8.23 min Scan# 1205
 Delta R.T. -0.07 min
 Lab File: VX015145.D
 Acq: 09 Mar 2020 16:06

Tgt Ion	Resp	Lower	Upper
63	100		
106	26.6	22.8	34.2

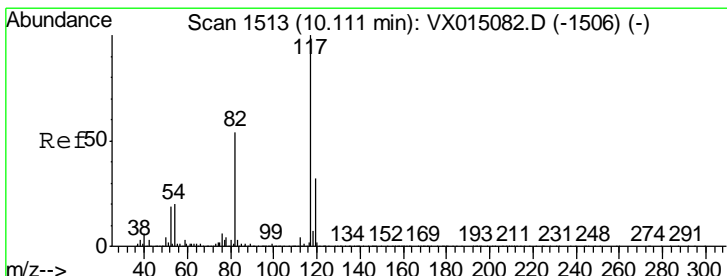
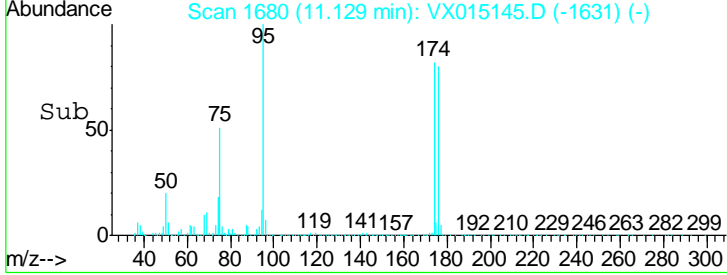
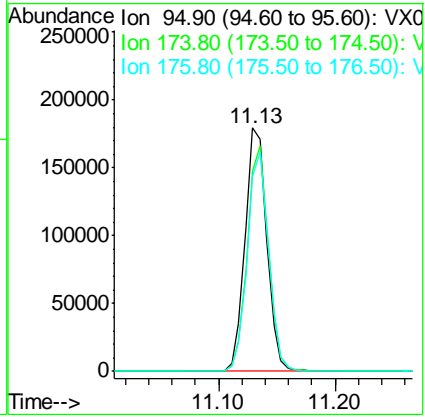
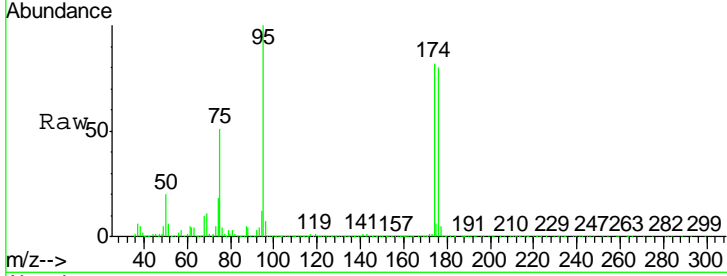




#62
 4-Bromofluorobenzene
 Concen: 50.81 ug/l
 RT: 11.13 min Scan# 1680
 Delta R.T. -0.00 min
 Lab File: VX015145.D
 Acq: 09 Mar 2020 16:06

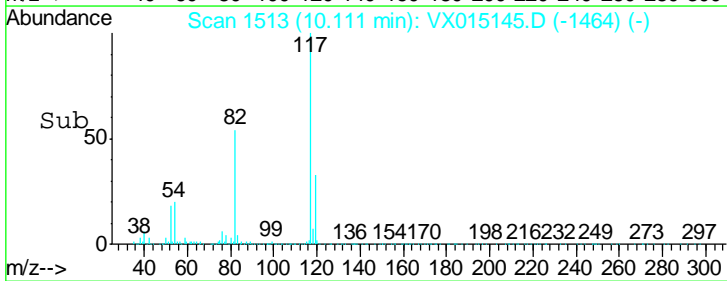
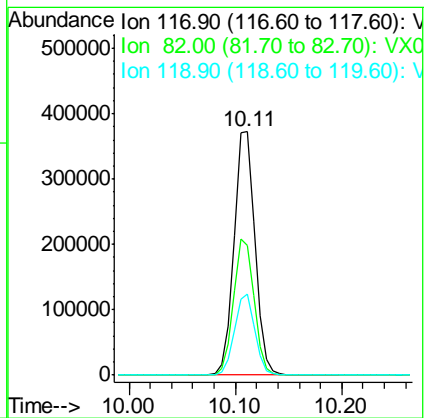
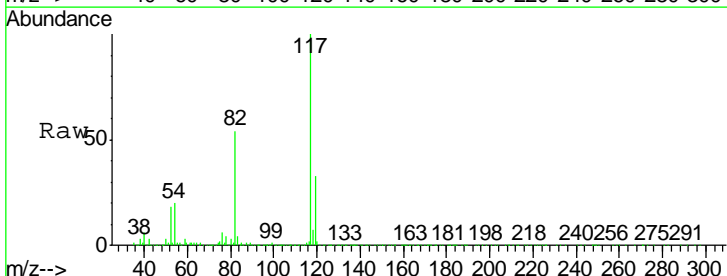
Instrument : MSVOA_X
 ClientSampled : RE132D6-20200304

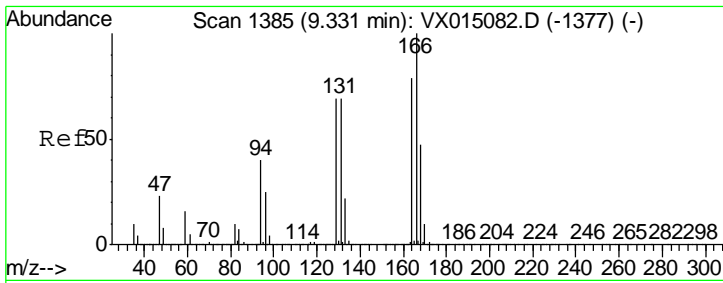
Tgt Ion	Resp	Lower	Upper
95	100		
174	90.4	0.0	177.6
176	88.2	0.0	170.2



#63
 Chlorobenzene-d5
 Concen: 50.00 ug/l
 RT: 10.11 min Scan# 1513
 Delta R.T. 0.00 min
 Lab File: VX015145.D
 Acq: 09 Mar 2020 16:06

Tgt Ion	Resp	Lower	Upper
117	100		
82	53.5	43.3	64.9
119	33.3	25.8	38.8

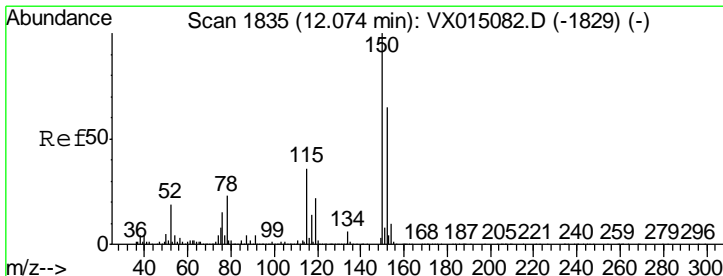
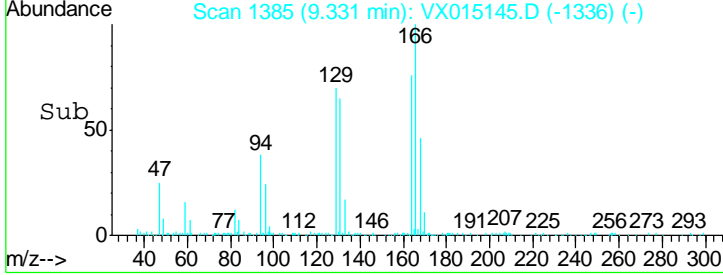
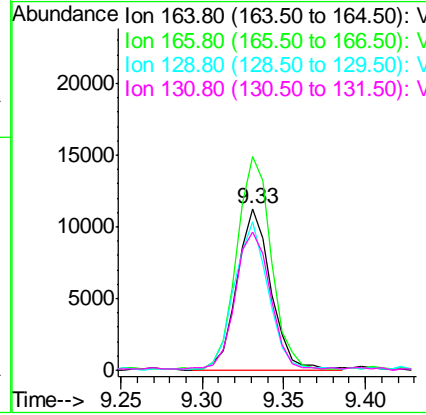
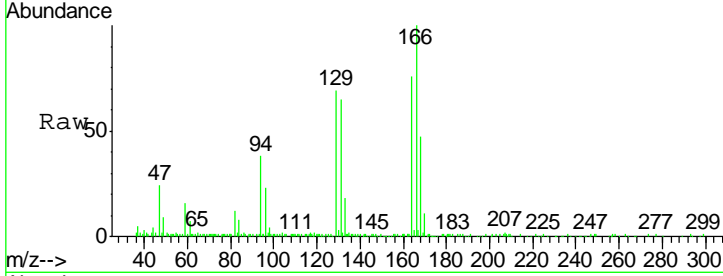




#64
 Tetrachloroethene
 Concen: 3.82 ug/l
 RT: 9.33 min Scan# 1385
 Delta R.T. 0.00 min
 Lab File: VX015145.D
 Acq: 09 Mar 2020 16:06

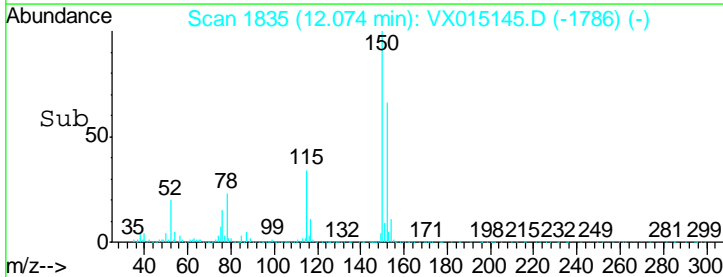
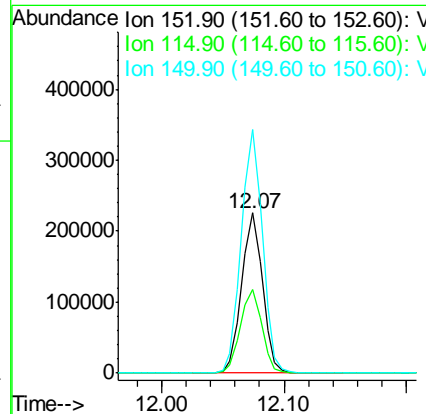
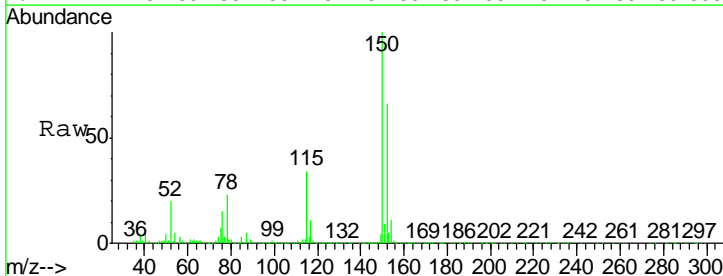
Instrument : MSVOA_X
 ClientSampled : RE132D6-20200304

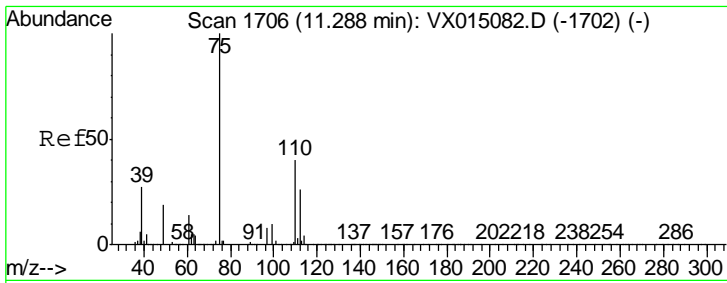
Tgt Ion	Resp	Lower	Upper
164	100		
166	131.8	101.1	151.7
129	90.9	69.4	104.0
131	85.0	69.8	104.8



#72
 1,4-Dichlorobenzene-d4
 Concen: 50.00 ug/l
 RT: 12.07 min Scan# 1835
 Delta R.T. 0.00 min
 Lab File: VX015145.D
 Acq: 09 Mar 2020 16:06

Tgt Ion	Resp	Lower	Upper
152	100		
115	54.0	38.2	114.6
150	154.6	0.0	343.8

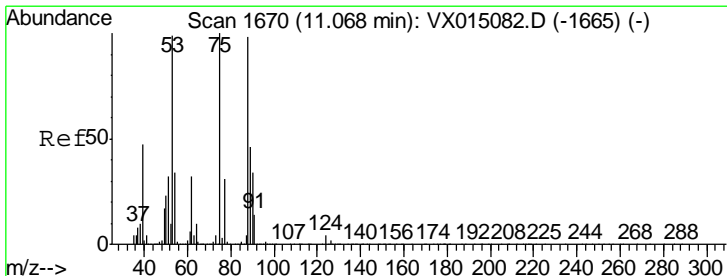
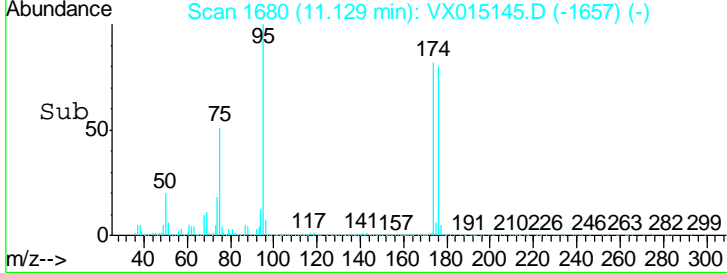
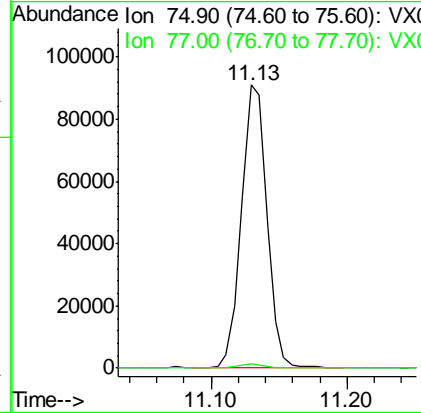
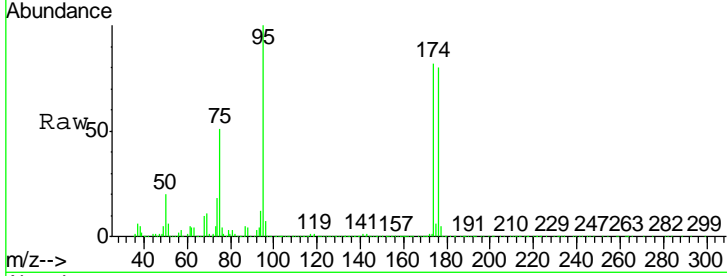




#76
 1,2,3-Trichloropropane
 Concen: 22.47 ug/l
 RT: 11.13 min Scan# 1680
 Delta R.T. -0.16 min
 Lab File: VX015145.D
 Acq: 09 Mar 2020 16:06

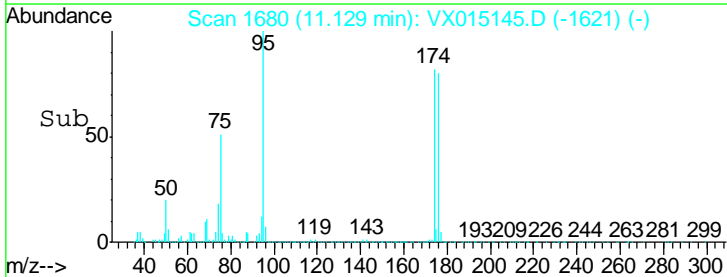
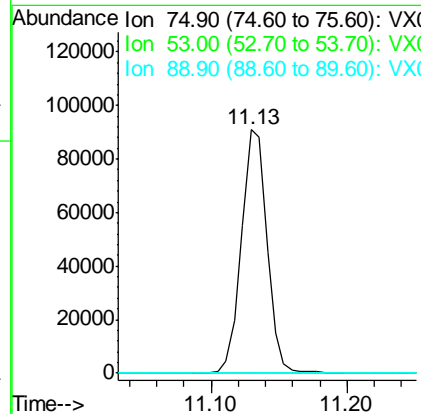
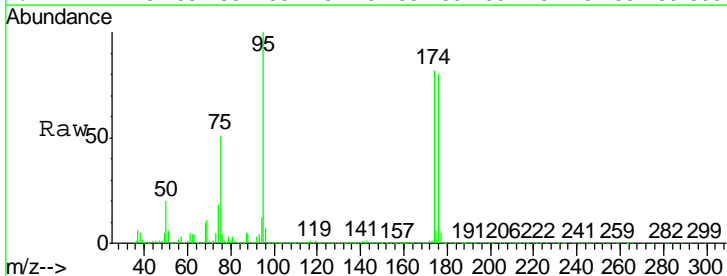
Instrument : MSVOA_X
 ClientSampled : RE132D6-20200304

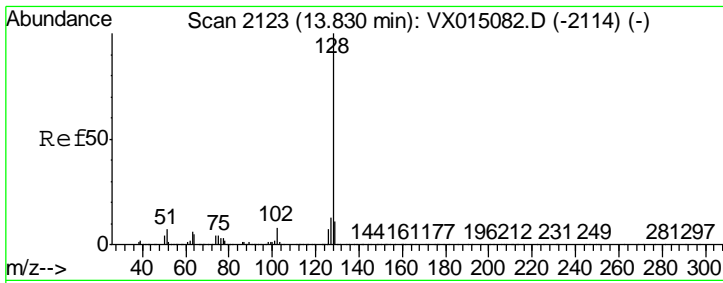
Tgt Ion: 75 Resp: 118763
 Ion Ratio Lower Upper
 75 100
 77 2.0 22.6 67.8#



#81
 trans-1,4-Dichloro-2-butene
 Concen: 63.76 ug/l
 RT: 11.13 min Scan# 1680
 Delta R.T. 0.06 min
 Lab File: VX015145.D
 Acq: 09 Mar 2020 16:06

Tgt Ion: 75 Resp: 118763
 Ion Ratio Lower Upper
 75 100
 53 0.5 77.9 116.9#
 89 0.1 36.2 54.2#





#95
 Naphthalene
 Concen: 1.45 ug/l
 RT: 13.85 min Scan# 2126
 Delta R.T. 0.02 min
 Lab File: VX015145.D
 Acq: 09 Mar 2020 16:06

Instrument :
 MSVOA_X
ClientSampled :
 RE132D6-20200304

Tgt Ion	Resp	Lower	Upper
128	100		
127	57.4	10.3	15.5#
129	16.5	8.6	13.0#

