

Data Path : Z:\voasrv\HPCHEM1\MSVOA_X\Data\VX030921\
 Data File : VX021115.D
 Acq On : 09 Mar 2021 17:34
 Operator : JC/MD
 Sample : M1596-16
 Misc : 5.0mL/MSVOA_X/WATER
 ALS Vial : 20 Sample Multiplier: 1

Instrument :
 MSVOA_X
 ClientSampled :

Quant Time: Mar 10 00:33:29 2021
 Quant Method : Z:\voasrv\HPCHEM1\MSVOA_X\Method\82X022421W.M
 Quant Title : SW846 8260
 QLast Update : Wed Feb 24 13:50:55 2021
 Response via : Initial Calibration

Compound	R.T.	QIon	Response	Conc	Units	Dev(Min)

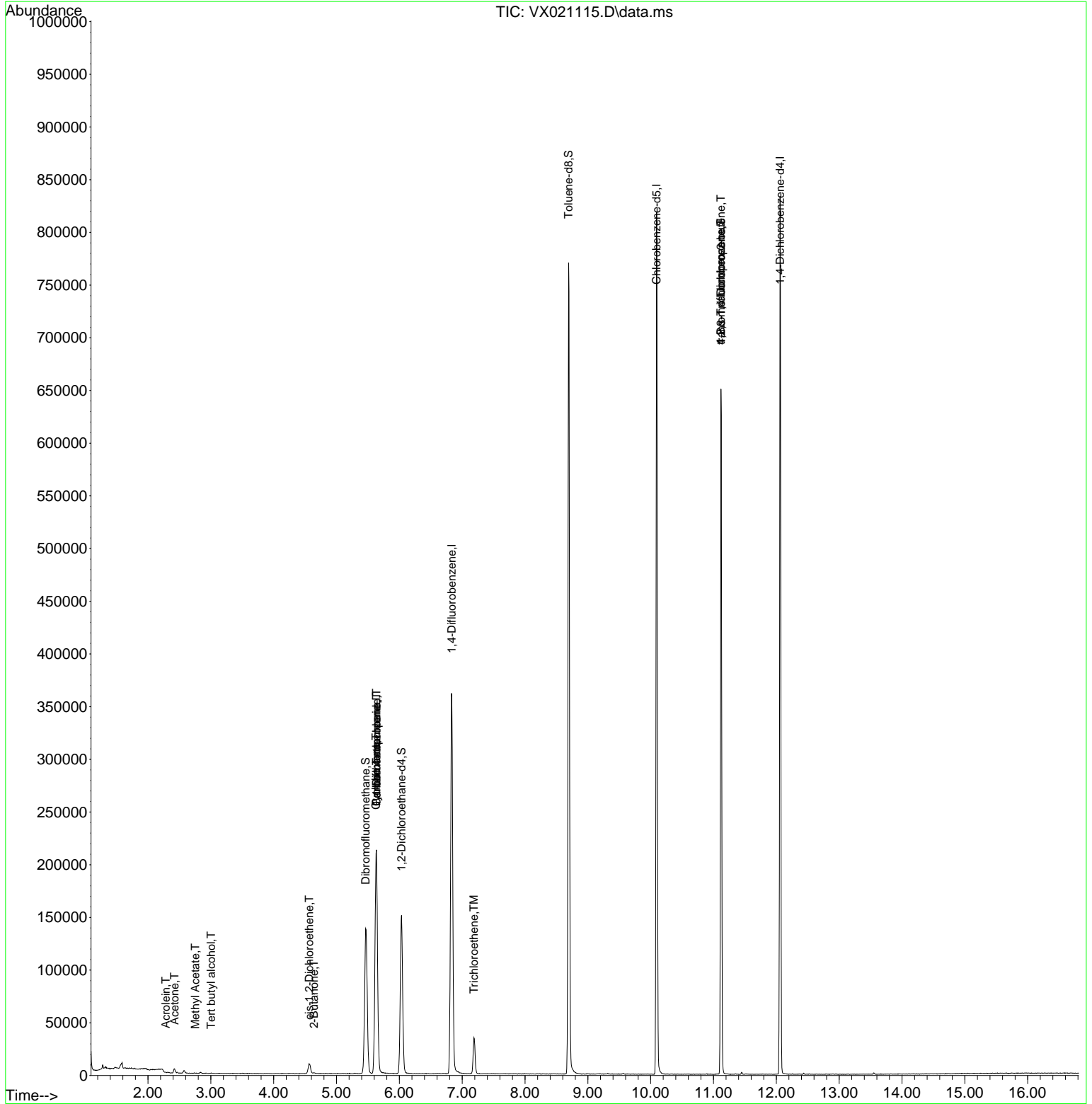
Internal Standards						
1) Pentafluorobenzene	5.635	168	207216	50.00	ug/l	0.01
34) 1,4-Difluorobenzene	6.835	114	382609	50.00	ug/l	0.00
63) Chlorobenzene-d5	10.094	117	383673	50.00	ug/l	0.00
72) 1,4-Dichlorobenzene-d4	12.059	152	176007	50.00	ug/l	0.00
System Monitoring Compounds						
33) 1,2-Dichloroethane-d4	6.035	65	140808	50.31	ug/l	0.00
Spiked Amount	50.000	Range 61 - 141	Recovery	=	100.62%	
35) Dibromofluoromethane	5.464	113	120908	52.01	ug/l	0.00
Spiked Amount	50.000	Range 69 - 133	Recovery	=	104.02%	
50) Toluene-d8	8.694	98	485867	53.60	ug/l	0.00
Spiked Amount	50.000	Range 65 - 126	Recovery	=	107.20%	
62) 4-Bromofluorobenzene	11.118	95	183408	54.72	ug/l	0.00
Spiked Amount	50.000	Range 58 - 135	Recovery	=	109.44%	
Target Compounds						
						Qvalue
5) Bromomethane	1.652	94	255	Below Cal	#	56
11) Tert butyl alcohol	3.005	59	263	0.42	ug/l #	73
13) Acrolein	2.282	56	155	0.40	ug/l	100
16) Acetone	2.423	43	4637	4.02	ug/l	94
18) Methyl Acetate	2.752	43	664	0.24	ug/l #	60
25) 2-Butanone	4.641	43	1598	0.91	ug/l #	79
27) cis-1,2-Dichloroethene	4.564	96	6389	2.13	ug/l	89
31) Cyclohexane	5.629	56	4096	1.01	ug/l #	1
36) 1,1-Dichloropropene	5.635	75	16210	4.46	ug/l #	48
38) Carbon Tetrachloride	5.635	117	19859	5.64	ug/l #	16
44) Trichloroethene	7.188	130	13541	4.72	ug/l	88
76) 1,2,3-Trichloropropane	11.118	75	88411	23.35	ug/l #	39
81) trans-1,4-Dichloro-2-b...	11.118	75	88411	51.70	ug/l #	12

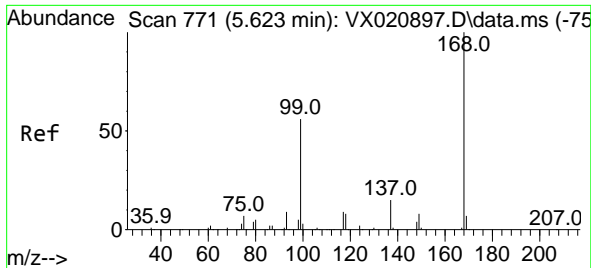
(#) = qualifier out of range (m) = manual integration (+) = signals summed

Data Path : Z:\voasrv\HPCHEM1\MSVOA_X\Data\VX030921\
 Data File : VX021115.D
 Acq On : 09 Mar 2021 17:34
 Operator : JC/MD
 Sample : M1596-16
 Misc : 5.0mL/MSVOA_X/WATER
 ALS Vial : 20 Sample Multiplier: 1

Instrument :
 MSVOA_X
 ClientSampled :

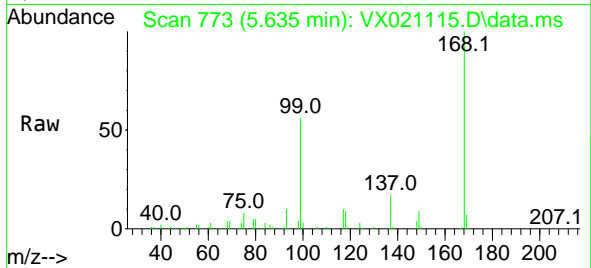
Quant Time: Mar 10 00:33:29 2021
 Quant Method : Z:\voasrv\HPCHEM1\MSVOA_X\Method\82X022421W.M
 Quant Title : SW846 8260
 QLast Update : Wed Feb 24 13:50:55 2021
 Response via : Initial Calibration



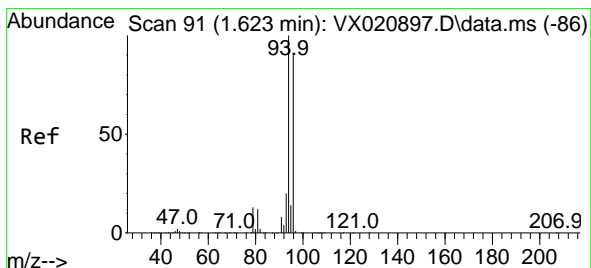
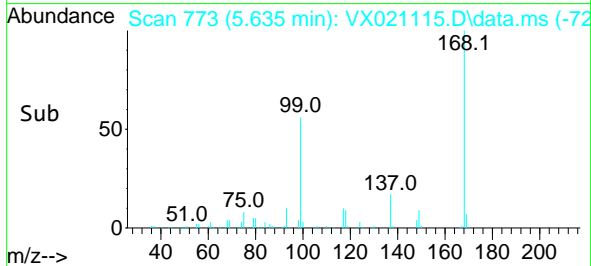
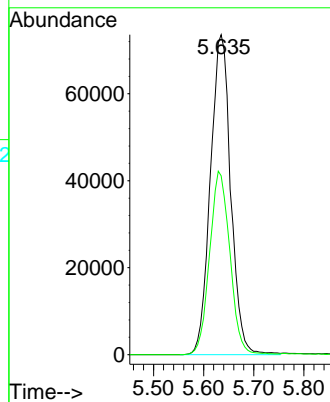


#1
 Pentafluorobenzene
 Concen: 50.00 ug/l
 RT: 5.635 min Scan# 773
 Delta R.T. 0.012 min
 Lab File: VX021115.D
 Acq: 09 Mar 2021 17:34

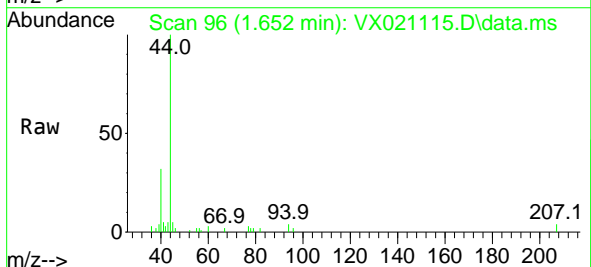
Instrument :
 MSVOA_X
 ClientSampled :



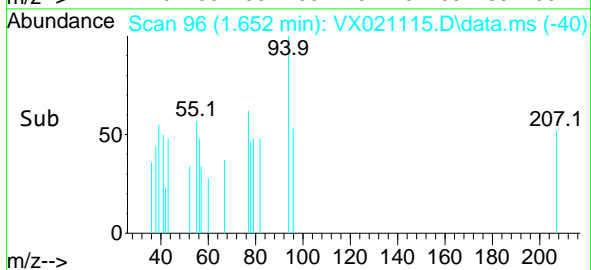
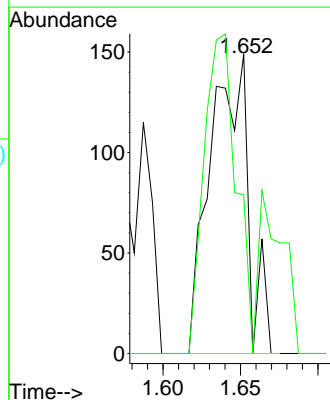
Tgt Ion:168 Resp: 207216
 Ion Ratio Lower Upper
 168 100
 99 55.9 45.8 68.6

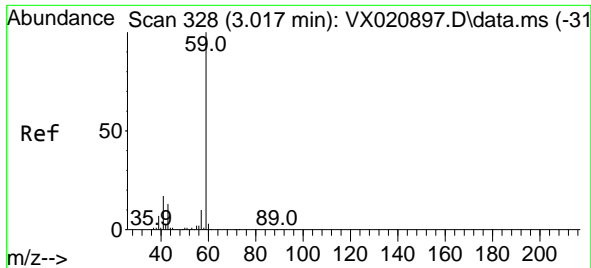


#5
 Bromomethane
 Concen: Below Cal
 RT: 1.652 min Scan# 96
 Delta R.T. 0.029 min
 Lab File: VX021115.D
 Acq: 09 Mar 2021 17:34



Tgt Ion: 94 Resp: 255
 Ion Ratio Lower Upper
 94 100
 96 53.0 76.4 114.6#

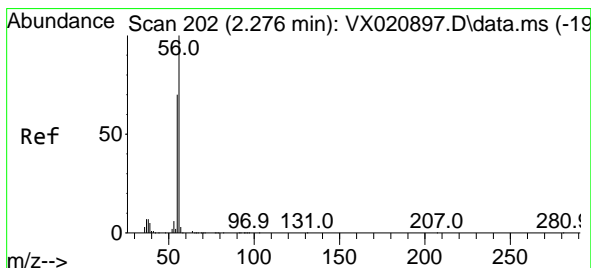
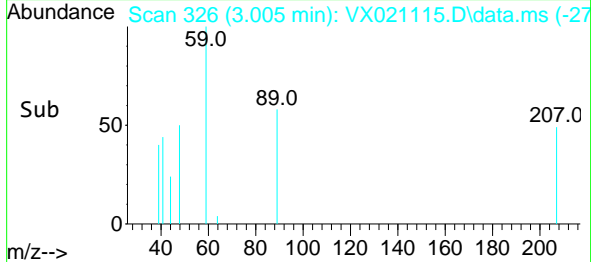
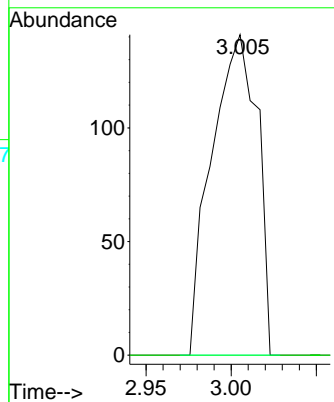
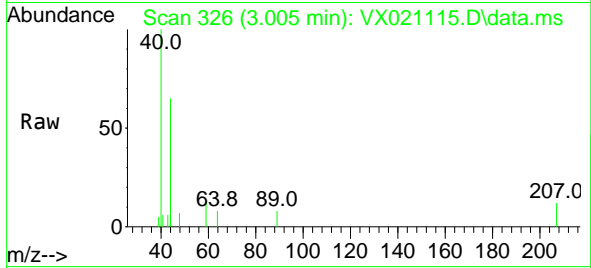




#11
 Tert butyl alcohol
 Concen: 0.42 ug/l
 RT: 3.005 min Scan# 326
 Delta R.T. -0.012 min
 Lab File: VX021115.D
 Acq: 09 Mar 2021 17:34

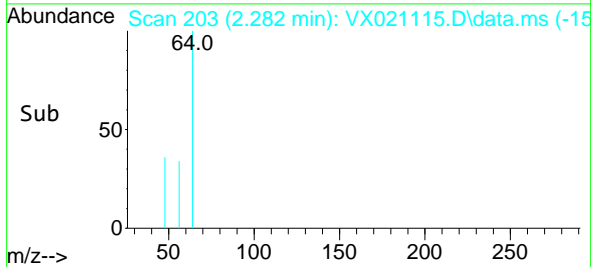
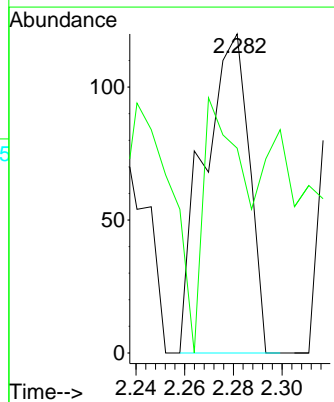
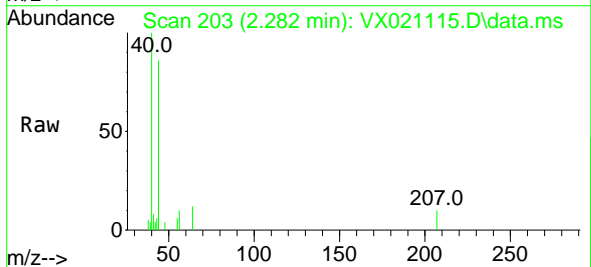
Instrument : MSVOA_X
 ClientSampled :

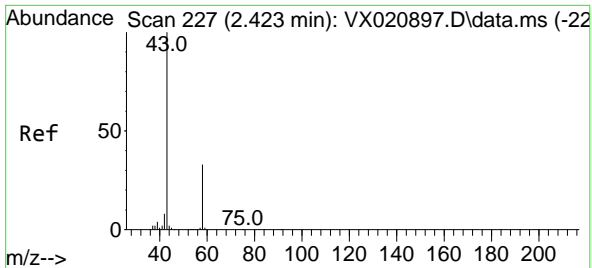
Tgt Ion: 59 Resp: 263
 Ion Ratio Lower Upper
 59 100
 57 0.0 7.8 11.8#



#13
 Acrolein
 Concen: 0.40 ug/l
 RT: 2.282 min Scan# 203
 Delta R.T. 0.006 min
 Lab File: VX021115.D
 Acq: 09 Mar 2021 17:34

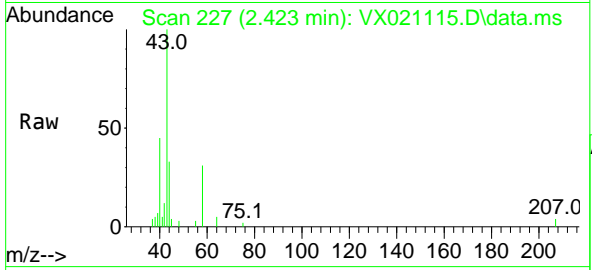
Tgt Ion: 56 Resp: 155
 Ion Ratio Lower Upper
 56 100
 55 70.3 56.4 84.6



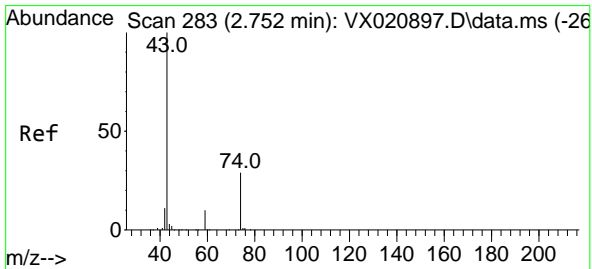
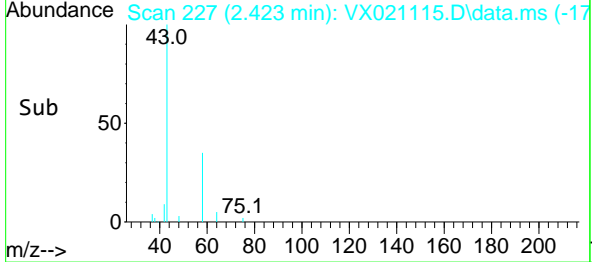
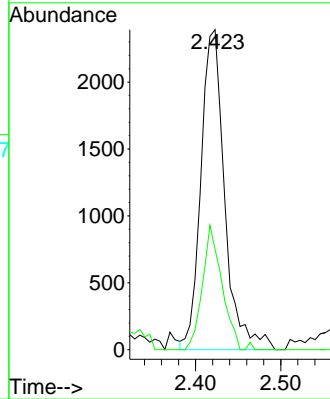


#16
 Acetone
 Concen: 4.02 ug/l
 RT: 2.423 min Scan# 227
 Delta R.T. 0.000 min
 Lab File: VX021115.D
 Acq: 09 Mar 2021 17:34

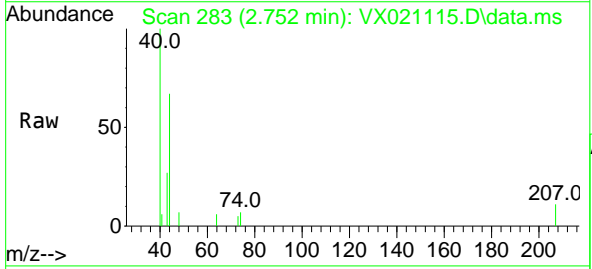
Instrument :
 MSVOA_X
 ClientSampled :



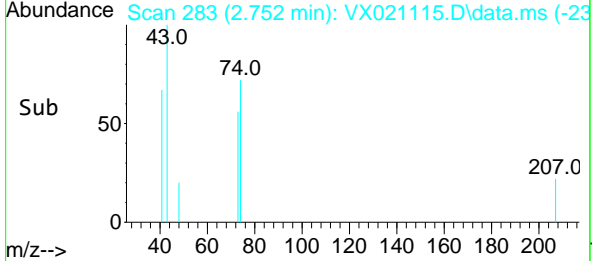
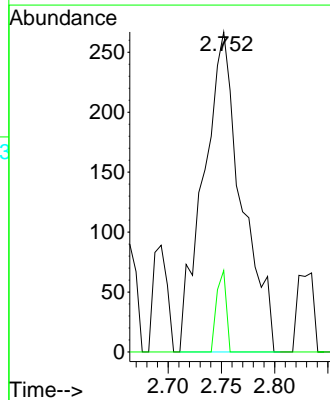
Tgt Ion: 43 Resp: 4637
 Ion Ratio Lower Upper
 43 100
 58 31.3 27.8 41.8

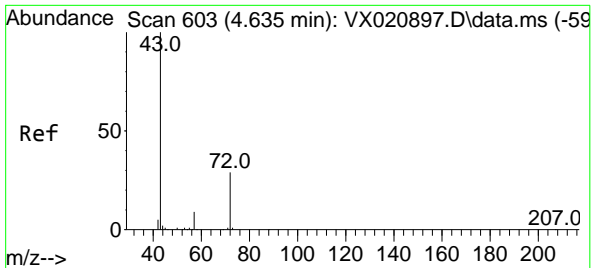


#18
 Methyl Acetate
 Concen: 0.24 ug/l
 RT: 2.752 min Scan# 283
 Delta R.T. 0.000 min
 Lab File: VX021115.D
 Acq: 09 Mar 2021 17:34



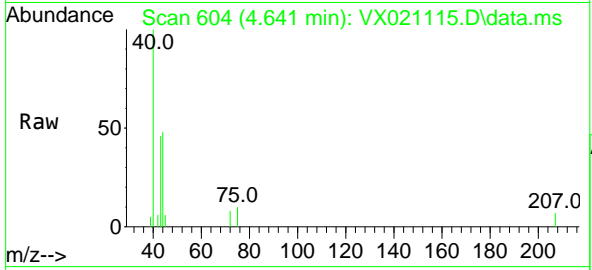
Tgt Ion: 43 Resp: 664
 Ion Ratio Lower Upper
 43 100
 74 6.3 21.9 32.9#



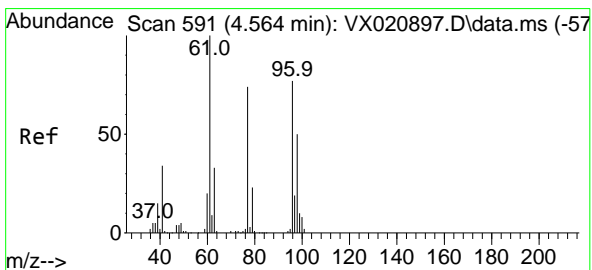
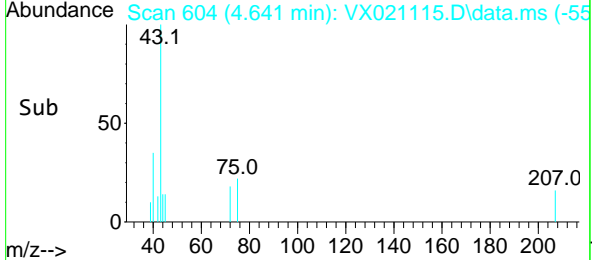
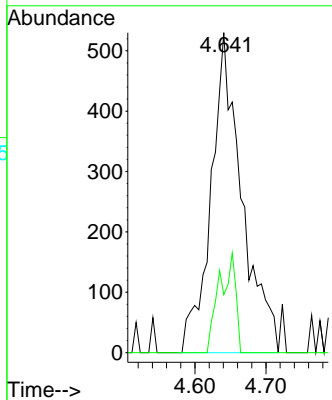


#25
 2-Butanone
 Concen: 0.91 ug/l
 RT: 4.641 min Scan# 604
 Delta R.T. 0.006 min
 Lab File: VX021115.D
 Acq: 09 Mar 2021 17:34

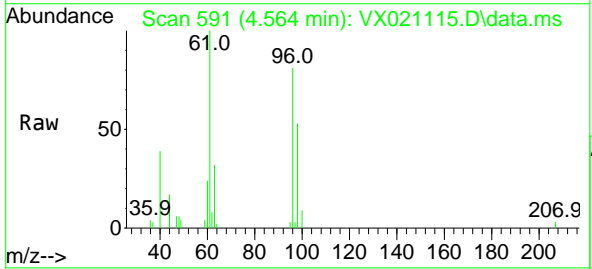
Instrument :
 MSVOA_X
 ClientSampled :



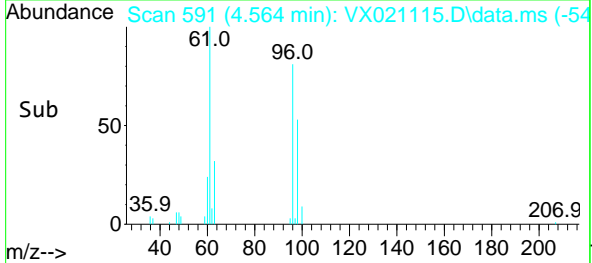
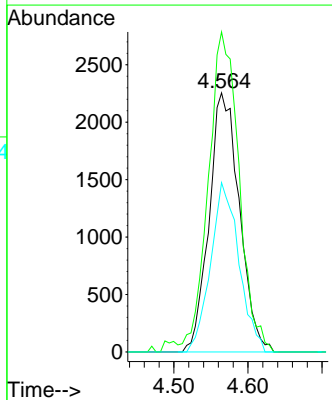
Tgt Ion: 43 Resp: 1598
 Ion Ratio Lower Upper
 43 100
 72 18.1 23.7 35.5#

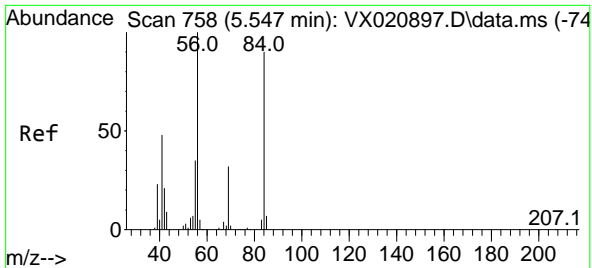


#27
 cis-1,2-Dichloroethene
 Concen: 2.13 ug/l
 RT: 4.564 min Scan# 591
 Delta R.T. 0.000 min
 Lab File: VX021115.D
 Acq: 09 Mar 2021 17:34



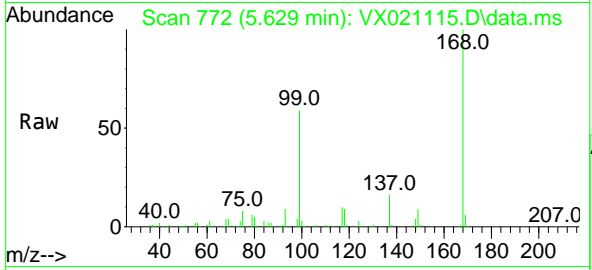
Tgt Ion: 96 Resp: 6389
 Ion Ratio Lower Upper
 96 100
 61 125.0 0.0 285.6
 98 61.0 0.0 129.6





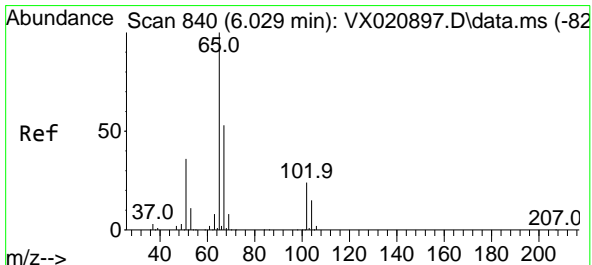
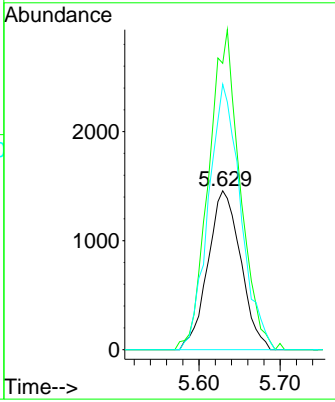
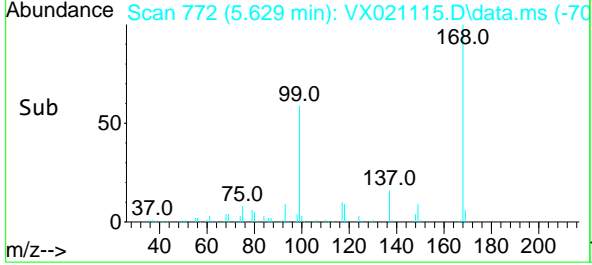
#31
 Cyclohexane
 Concen: 1.01 ug/l
 RT: 5.629 min Scan# 772
 Delta R.T. 0.082 min
 Lab File: VX021115.D
 Acq: 09 Mar 2021 17:34

Instrument :
 MSVOA_X
 ClientSampled :

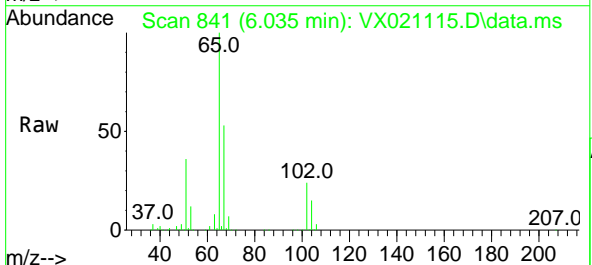


Tgt Ion: 56 Resp: 4096

Ion	Ratio	Lower	Upper
56	100		
69	180.3	25.3	37.9#
84	167.1	71.4	107.0#

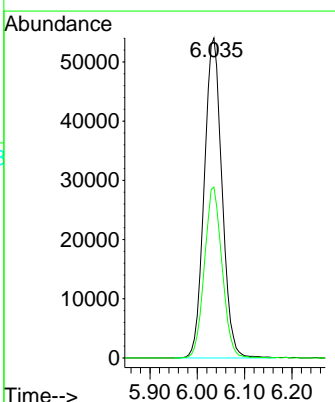
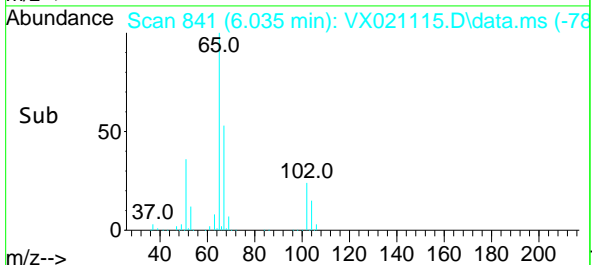


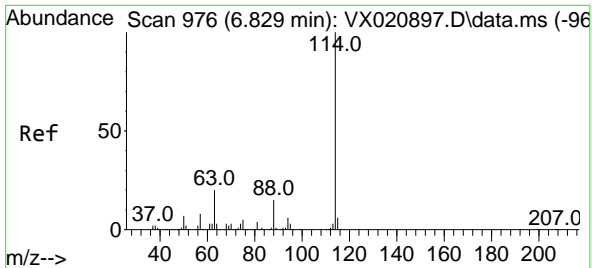
#33
 1,2-Dichloroethane-d4
 Concen: 50.31 ug/l
 RT: 6.035 min Scan# 841
 Delta R.T. 0.006 min
 Lab File: VX021115.D
 Acq: 09 Mar 2021 17:34



Tgt Ion: 65 Resp: 140808

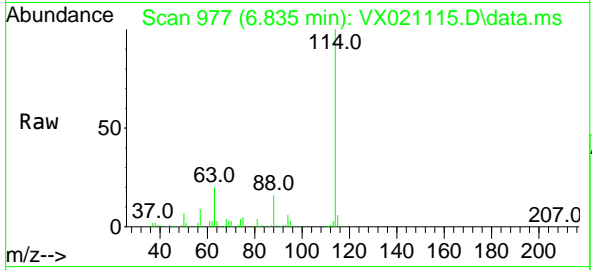
Ion	Ratio	Lower	Upper
65	100		
67	53.1	0.0	105.4





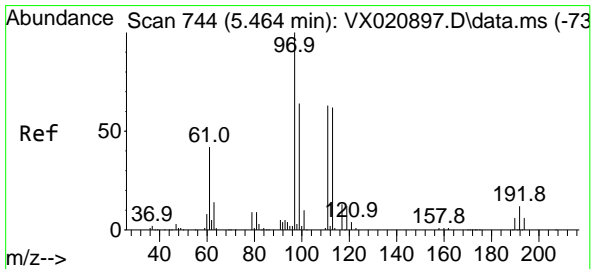
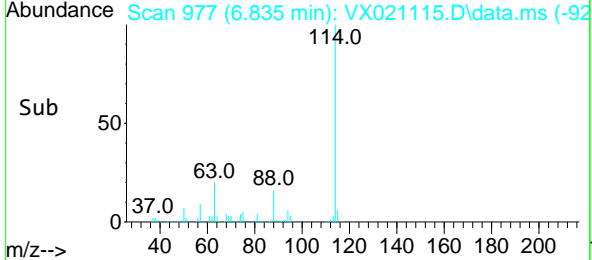
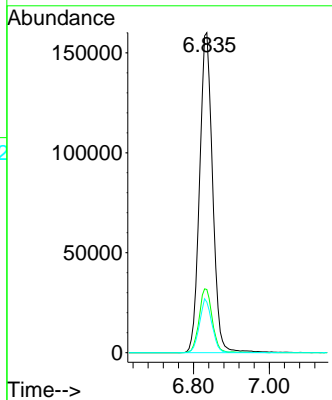
#34
 1,4-Difluorobenzene
 Concen: 50.00 ug/l
 RT: 6.835 min Scan# 977
 Delta R.T. 0.006 min
 Lab File: VX021115.D
 Acq: 09 Mar 2021 17:34

Instrument :
 MSVOA_X
 ClientSampled :

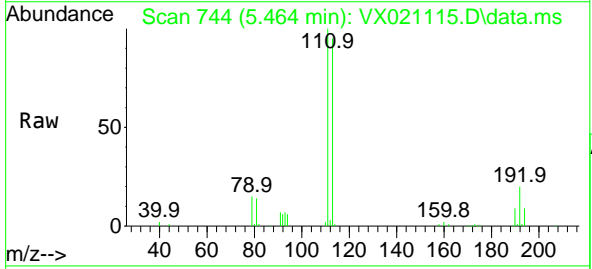


Tgt Ion:114 Resp: 382609

Ion	Ratio	Lower	Upper
114	100		
63	19.8	0.0	40.8
88	15.8	0.0	32.8

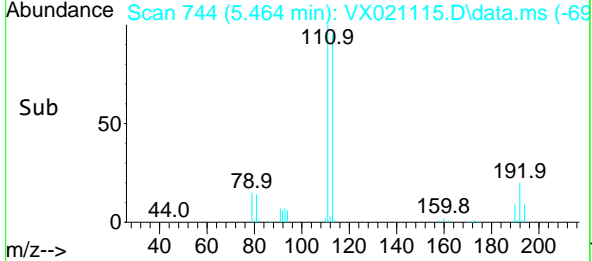
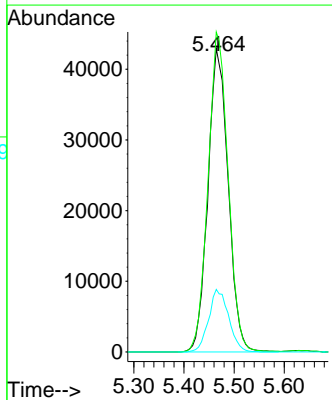


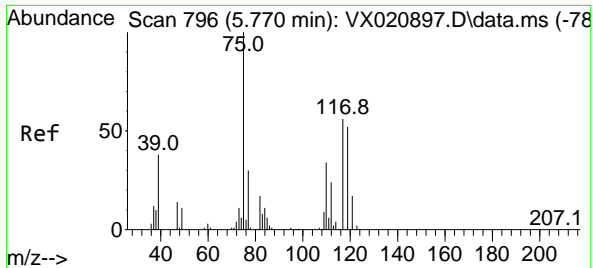
#35
 Dibromofluoromethane
 Concen: 52.01 ug/l
 RT: 5.464 min Scan# 744
 Delta R.T. 0.000 min
 Lab File: VX021115.D
 Acq: 09 Mar 2021 17:34



Tgt Ion:113 Resp: 120908

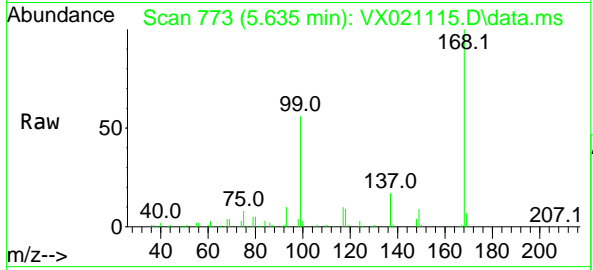
Ion	Ratio	Lower	Upper
113	100		
111	104.5	81.9	122.9
192	20.3	16.7	25.1





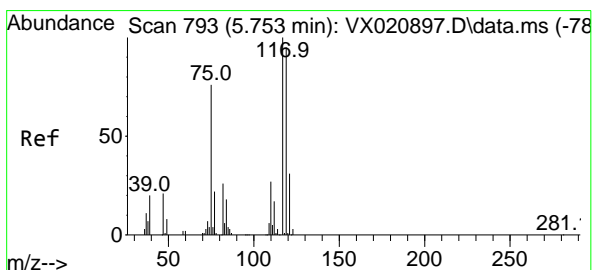
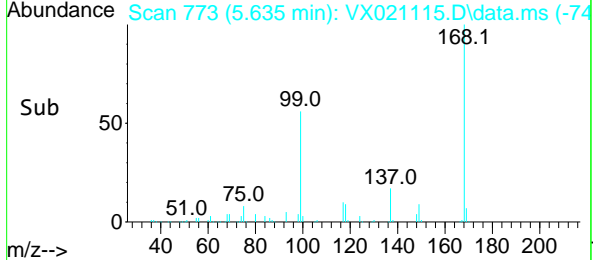
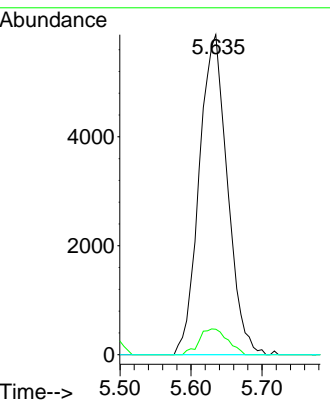
#36
 1,1-Dichloropropene
 Concen: 4.46 ug/l
 RT: 5.635 min Scan# 773
 Delta R.T. -0.135 min
 Lab File: VX021115.D
 Acq: 09 Mar 2021 17:34

Instrument :
 MSVOA_X
 ClientSampled :

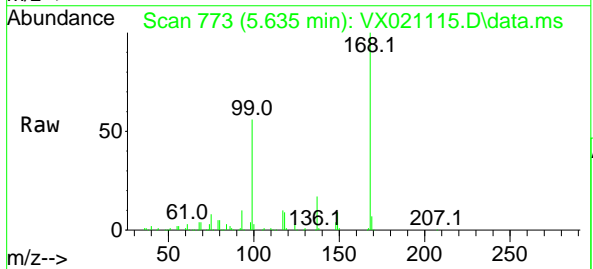


Tgt Ion: 75 Resp: 16210

Ion	Ratio	Lower	Upper
75	100		
110	8.1	18.1	54.4#
77	0.0	25.3	37.9#

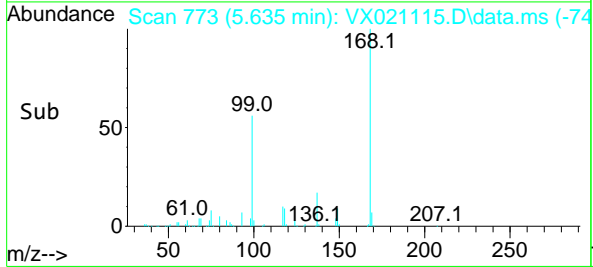
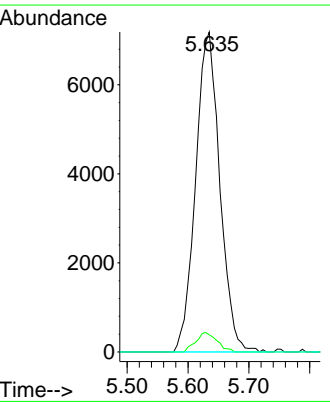


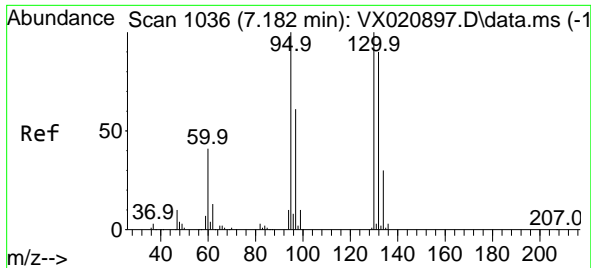
#38
 Carbon Tetrachloride
 Concen: 5.64 ug/l
 RT: 5.635 min Scan# 773
 Delta R.T. -0.118 min
 Lab File: VX021115.D
 Acq: 09 Mar 2021 17:34



Tgt Ion: 117 Resp: 19859

Ion	Ratio	Lower	Upper
117	100		
119	5.3	76.2	114.2#
121	0.0	24.8	37.2#

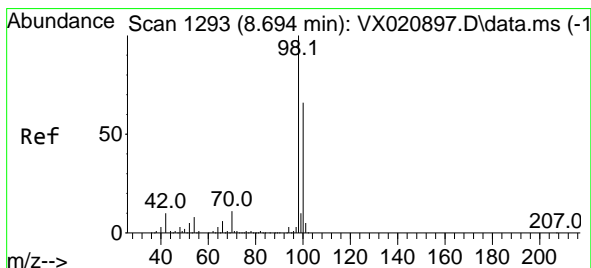
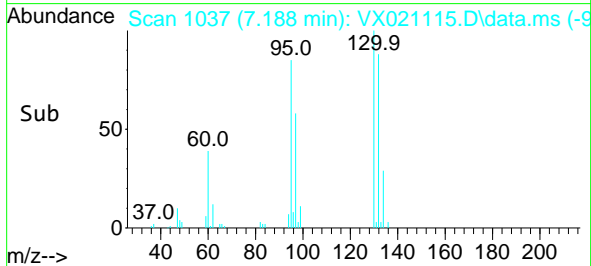
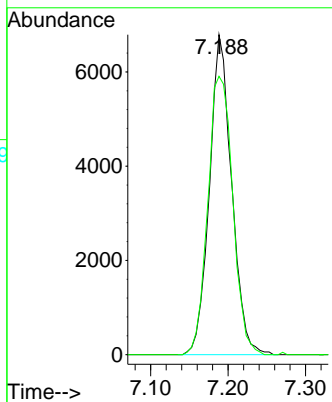
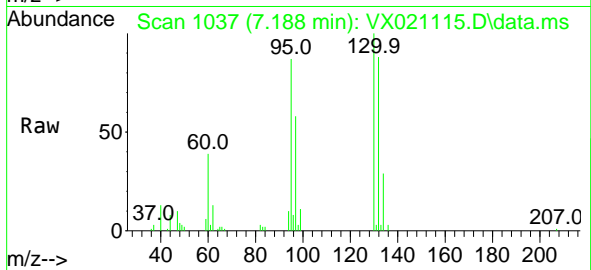




#44
 Trichloroethene
 Concen: 4.72 ug/l
 RT: 7.188 min Scan# 1037
 Delta R.T. 0.006 min
 Lab File: VX021115.D
 Acq: 09 Mar 2021 17:34

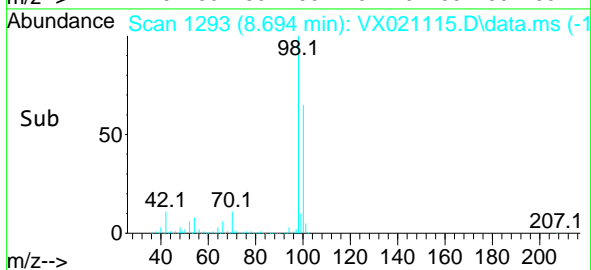
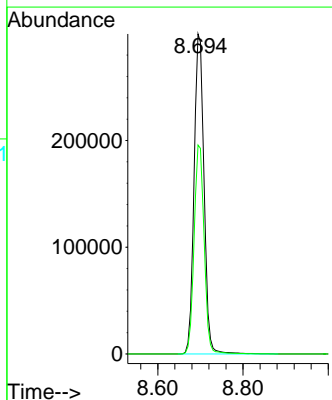
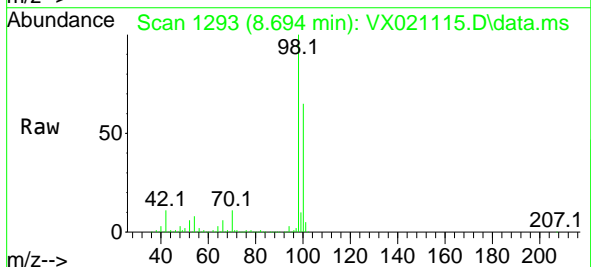
Instrument :
 MSVOA_X
 ClientSampled :

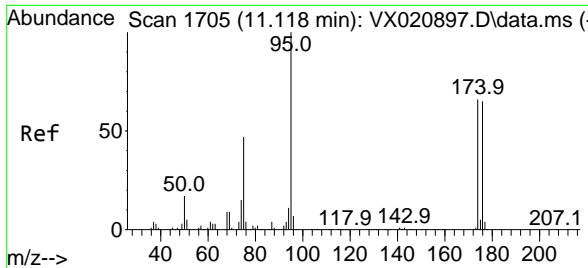
Tgt Ion:130 Resp: 13541
 Ion Ratio Lower Upper
 130 100
 95 87.0 0.0 198.0



#50
 Toluene-d8
 Concen: 53.60 ug/l
 RT: 8.694 min Scan# 1293
 Delta R.T. 0.000 min
 Lab File: VX021115.D
 Acq: 09 Mar 2021 17:34

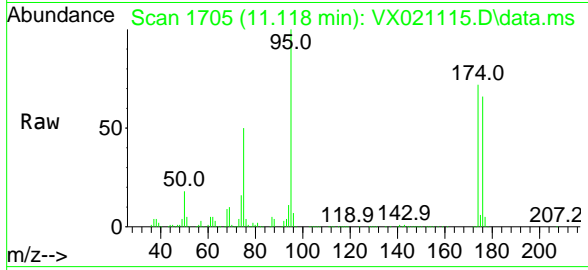
Tgt Ion: 98 Resp: 485867
 Ion Ratio Lower Upper
 98 100
 100 66.0 51.9 77.9



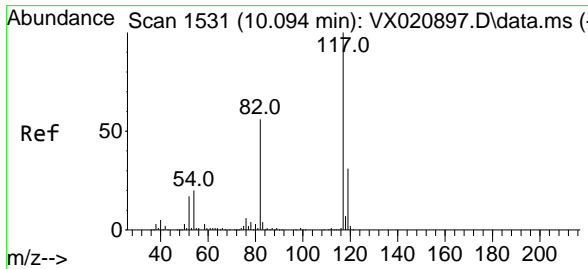
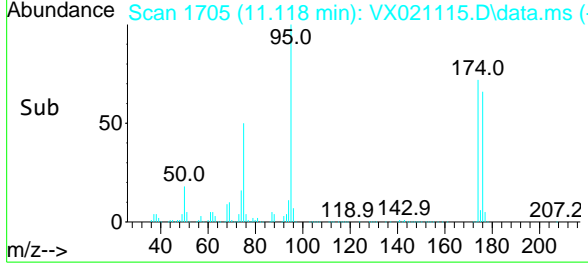
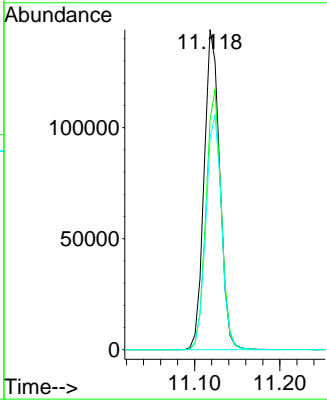


#62
 4-Bromofluorobenzene
 Concen: 54.72 ug/l
 RT: 11.118 min Scan# 1705
 Delta R.T. 0.000 min
 Lab File: VX021115.D
 Acq: 09 Mar 2021 17:34

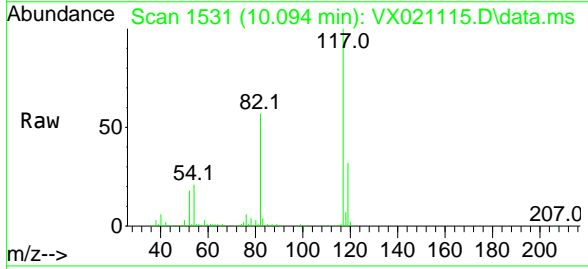
Instrument :
 MSVOA_X
 ClientSampled :



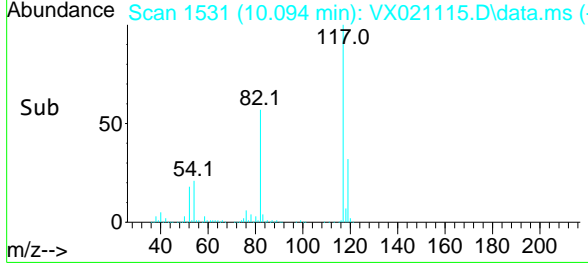
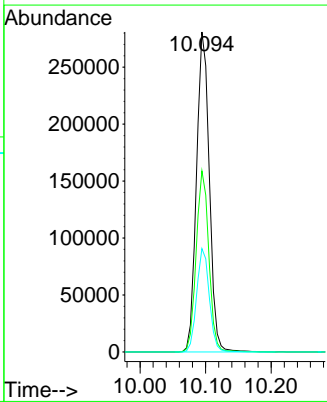
Tgt Ion: 95 Resp: 183408
 Ion Ratio Lower Upper
 95 100
 174 79.9 0.0 154.6
 176 73.6 0.0 155.8

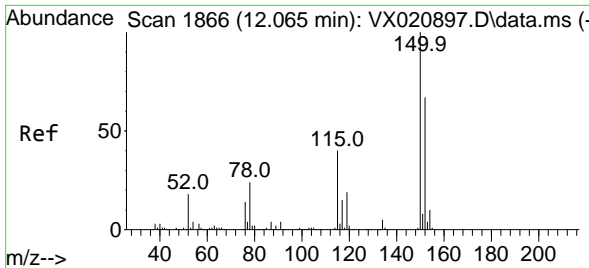


#63
 Chlorobenzene-d5
 Concen: 50.00 ug/l
 RT: 10.094 min Scan# 1531
 Delta R.T. 0.000 min
 Lab File: VX021115.D
 Acq: 09 Mar 2021 17:34



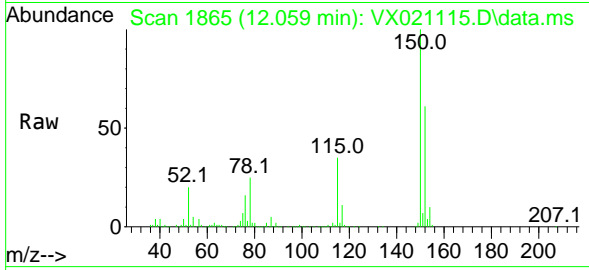
Tgt Ion: 117 Resp: 383673
 Ion Ratio Lower Upper
 117 100
 82 56.6 47.4 71.2
 119 32.3 26.6 39.8





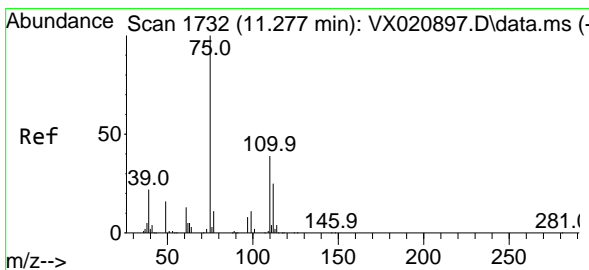
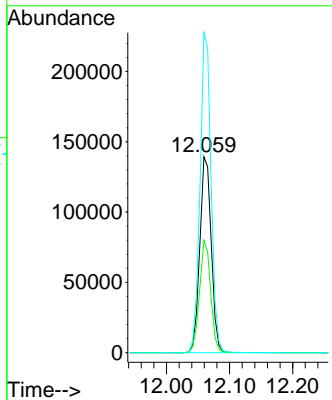
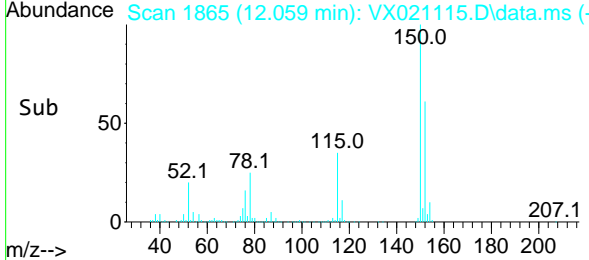
#72
 1,4-Dichlorobenzene-d4
 Concen: 50.00 ug/l
 RT: 12.059 min Scan# 1865
 Delta R.T. -0.006 min
 Lab File: VX021115.D
 Acq: 09 Mar 2021 17:34

Instrument :
 MSVOA_X
 ClientSampled :

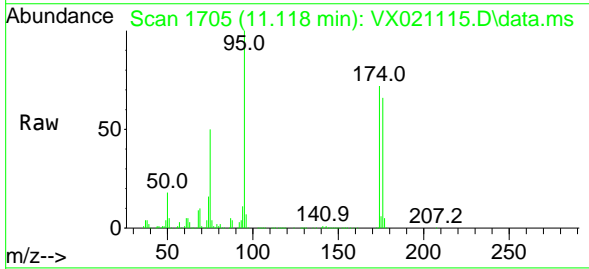


Tgt Ion:152 Resp: 176007

Ion	Ratio	Lower	Upper
152	100		
115	55.6	41.1	123.3
150	157.3	0.0	349.0

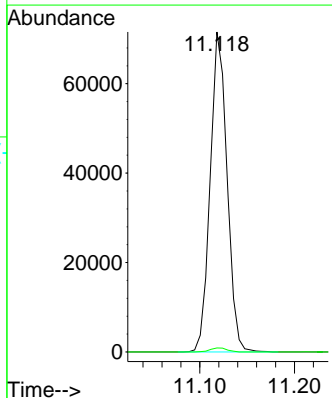
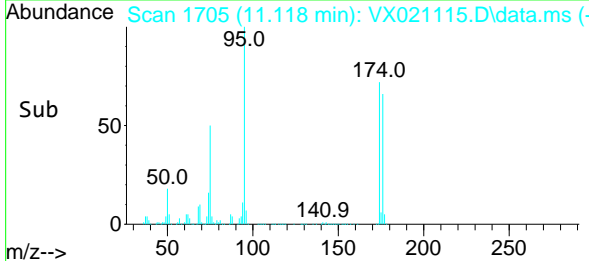


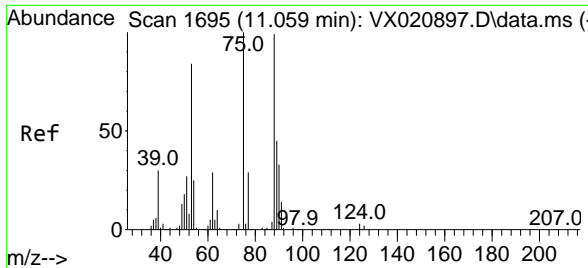
#76
 1,2,3-Trichloropropane
 Concen: 23.35 ug/l
 RT: 11.118 min Scan# 1705
 Delta R.T. -0.159 min
 Lab File: VX021115.D
 Acq: 09 Mar 2021 17:34



Tgt Ion: 75 Resp: 88411

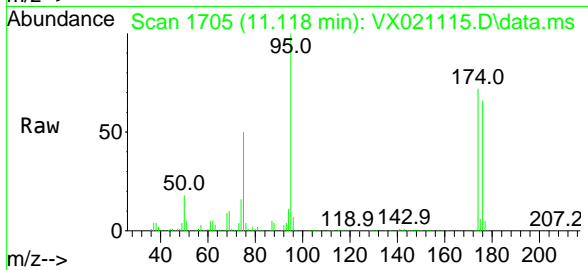
Ion	Ratio	Lower	Upper
75	100		
77	1.3	19.1	57.5#





#81
 trans-1,4-Dichloro-2-butene
 Concen: 51.70 ug/l
 RT: 11.118 min Scan# 1705
 Delta R.T. 0.059 min
 Lab File: VX021115.D
 Acq: 09 Mar 2021 17:34

Instrument :
 MSVOA_X
 ClientSampled :



Tgt Ion: 75 Resp: 88411

Ion	Ratio	Lower	Upper
75	100		
53	0.0	74.5	111.7#
89	0.0	37.9	56.9#

