

Data Path : Z:\voasrv\HPCHEM1\MSVOA_X\Data\VX030922\
 Data File : VX027357.D
 Acq On : 09 Mar 2022 18:14
 Operator : JC/MD
 Sample : N1800-02
 Misc : 5.0mL/MSVOA_X/WATER
 ALS Vial : 10 Sample Multiplier: 1

Instrument :
 MSVOA_X
 ClientSampleId :

Quant Time: Mar 10 00:35:58 2022
 Quant Method : Z:\voasrv\HPCHEM1\MSVOA_X\Method\82X030822W.M
 Quant Title : SW846 8260
 QLast Update : Tue Mar 08 15:54:34 2022
 Response via : Initial Calibration

Compound	R.T.	QIon	Response	Conc	Units	Dev(Min)

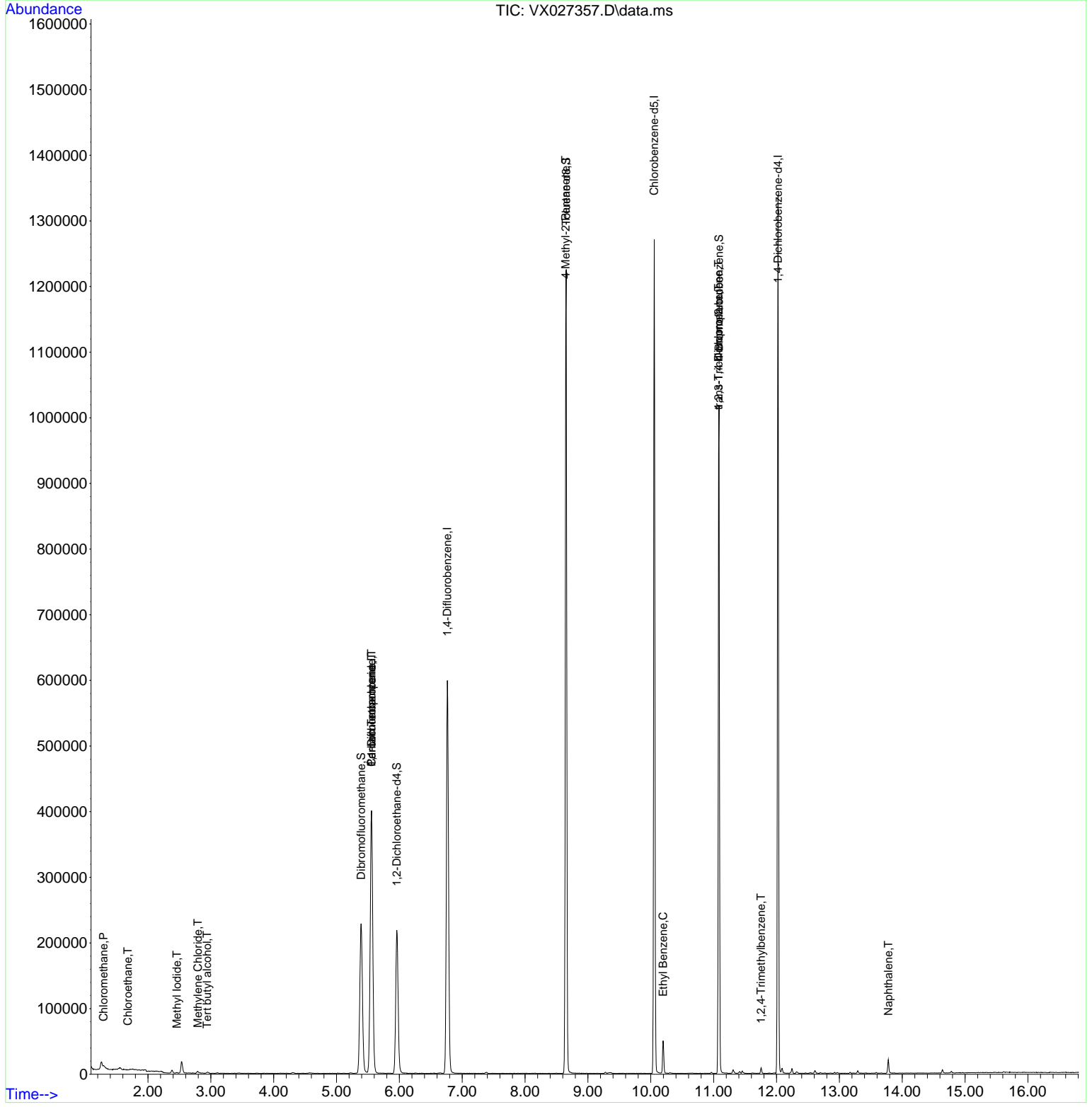
Internal Standards						
1) Pentafluorobenzene	5.556	168	408125	50.000	ug/l	0.00
34) 1,4-Difluorobenzene	6.763	114	661104	50.000	ug/l	0.00
63) Chlorobenzene-d5	10.055	117	612173	50.000	ug/l	0.00
72) 1,4-Dichlorobenzene-d4	12.024	152	283744	50.000	ug/l	0.00
System Monitoring Compounds						
33) 1,2-Dichloroethane-d4	5.958	65	210063	44.137	ug/l	0.00
Spiked Amount	50.000	Range 61 - 141	Recovery =	88.280%		
35) Dibromofluoromethane	5.391	113	207714	48.692	ug/l	0.00
Spiked Amount	50.000	Range 69 - 133	Recovery =	97.380%		
50) Toluene-d8	8.653	98	775199	48.135	ug/l	0.00
Spiked Amount	50.000	Range 65 - 126	Recovery =	96.260%		
62) 4-Bromofluorobenzene	11.085	95	283804	46.237	ug/l	0.00
Spiked Amount	50.000	Range 58 - 135	Recovery =	92.480%		
Target Compounds						
						Qvalue
3) Chloromethane	1.294	50	893	0.203	ug/l #	87
5) Bromomethane	1.611	94	601	Below Cal		83
6) Chloroethane	1.679	64	555	0.644	ug/l #	54
10) Methyl Iodide	2.459	142	1168	0.201	ug/l	94
11) Tert butyl alcohol	2.940	59	984	1.055	ug/l #	72
16) Acetone	2.380	43	4683	Below Cal	#	81
20) Methylene Chloride	2.794	84	1207	0.260	ug/l #	92
36) 1,1-Dichloropropene	5.556	75	26110	4.408	ug/l #	50
38) Carbon Tetrachloride	5.556	117	38835	6.341	ug/l #	15
51) 4-Methyl-2-Pentanone	8.647	43	2430	0.386	ug/l #	1
67) Ethyl Benzene	10.195	91	30464	1.372	ug/l	97
76) 1,2,3-Trichloropropane	11.079	75	129839	20.856	ug/l #	38
81) trans-1,4-Dichloro-2-b...	11.079	75	129839	67.451	ug/l #	15
84) 1,2,4-Trimethylbenzene	11.756	105	4323	0.245	ug/l	99
95) Naphthalene	13.780	128	15283	0.715	ug/l	98

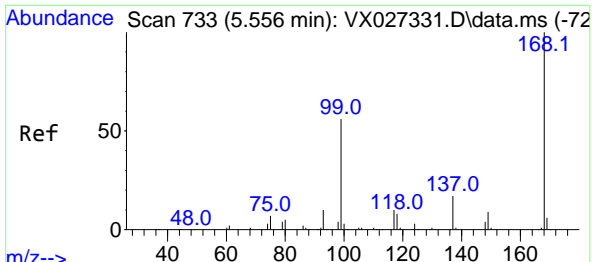
(#) = qualifier out of range (m) = manual integration (+) = signals summed

Data Path : Z:\voasrv\HPCHEM1\MSVOA_X\Data\VX030922\
 Data File : VX027357.D
 Acq On : 09 Mar 2022 18:14
 Operator : JC/MD
 Sample : N1800-02
 Misc : 5.0mL/MSVOA_X/WATER
 ALS Vial : 10 Sample Multiplier: 1

Instrument :
 MSVOA_X
 ClientSampleId :

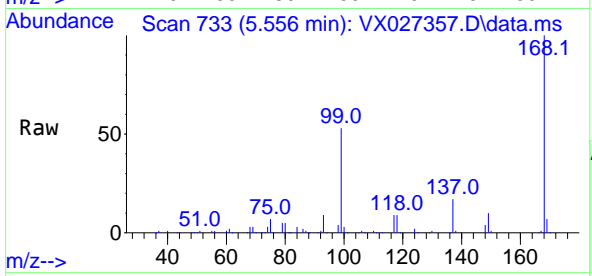
Quant Time: Mar 10 00:35:58 2022
 Quant Method : Z:\voasrv\HPCHEM1\MSVOA_X\Method\82X030822W.M
 Quant Title : SW846 8260
 QLast Update : Tue Mar 08 15:54:34 2022
 Response via : Initial Calibration



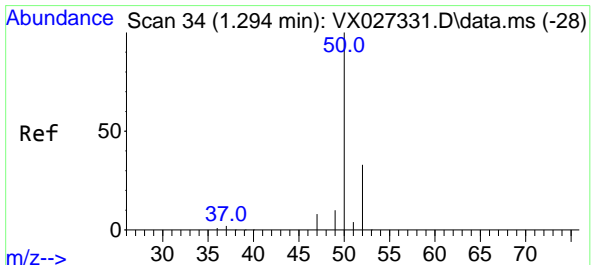
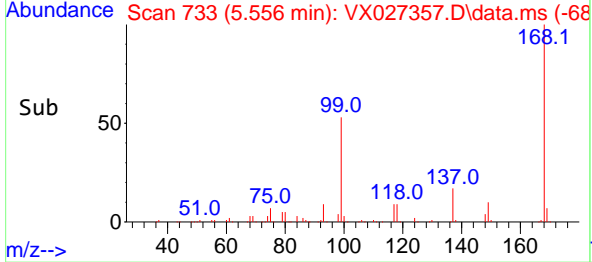
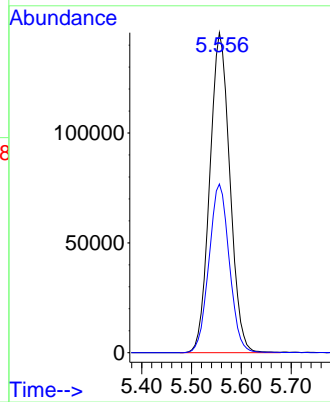


#1
 Pentafluorobenzene
 Concen: 50.000 ug/l
 RT: 5.556 min Scan# 71
 Delta R.T. -0.000 min
 Lab File: VX027357.D
 Acq: 09 Mar 2022 18:14

Instrument :
 MSVOA_X
 ClientSampleId :

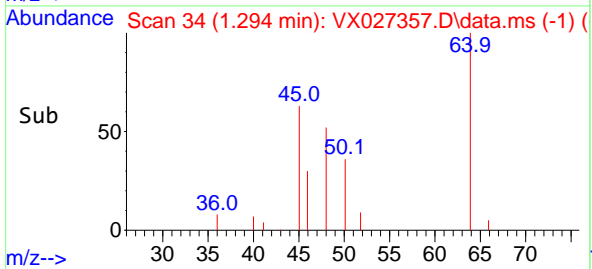
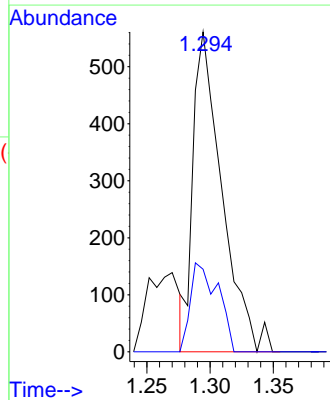
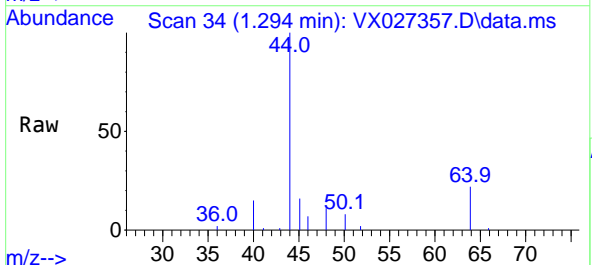


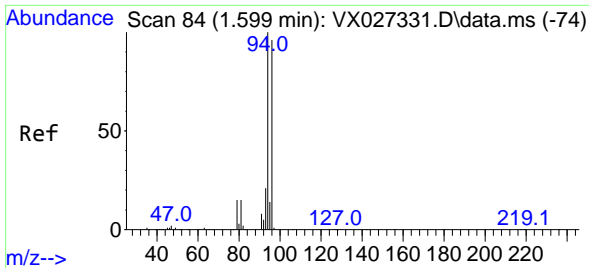
Tgt Ion:168 Resp: 408125
 Ion Ratio Lower Upper
 168 100
 99 52.7 41.7 62.5



#3
 Chloromethane
 Concen: 0.203 ug/l
 RT: 1.294 min Scan# 34
 Delta R.T. 0.000 min
 Lab File: VX027357.D
 Acq: 09 Mar 2022 18:14

Tgt Ion: 50 Resp: 893
 Ion Ratio Lower Upper
 50 100
 52 25.8 26.4 39.6#

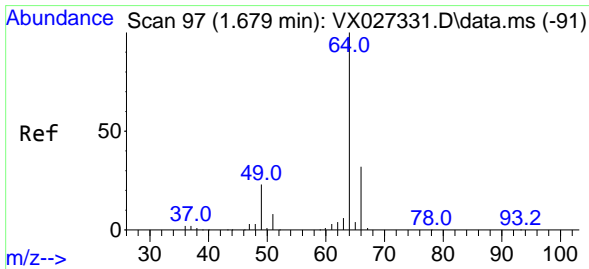
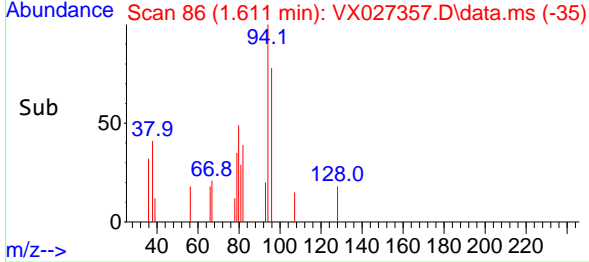
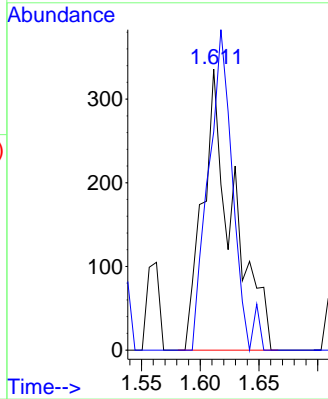
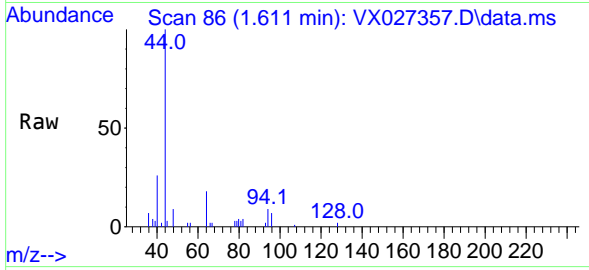




#5
 Bromomethane
 Concen: Below Cal
 RT: 1.611 min Scan# 80
 Delta R.T. 0.012 min
 Lab File: VX027357.D
 Acq: 09 Mar 2022 18:14

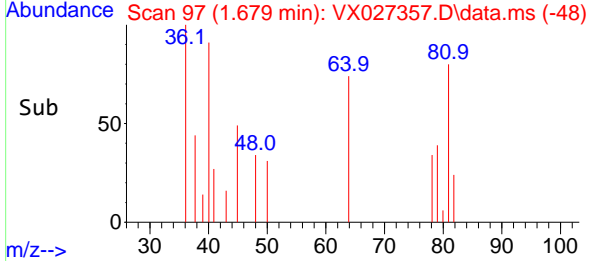
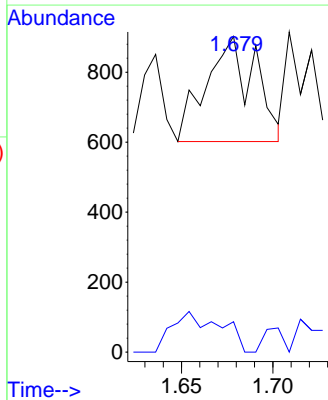
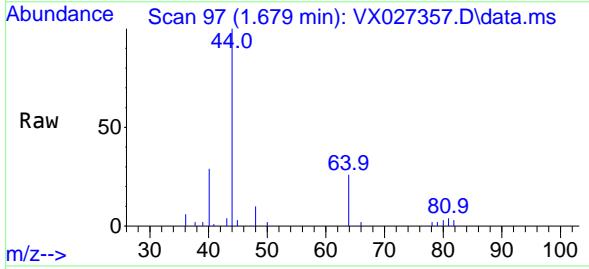
Instrument :
 MSVOA_X
 ClientSampleId :

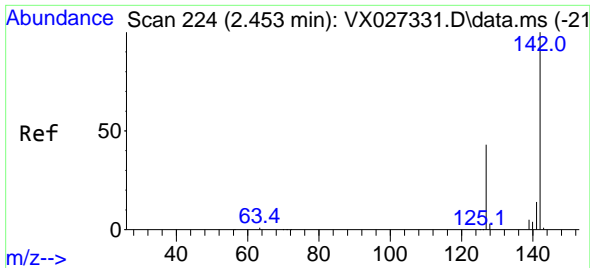
Tgt Ion: 94 Resp: 601
 Ion Ratio Lower Upper
 94 100
 96 77.7 75.3 112.9



#6
 Chloroethane
 Concen: 0.644 ug/l
 RT: 1.679 min Scan# 97
 Delta R.T. -0.000 min
 Lab File: VX027357.D
 Acq: 09 Mar 2022 18:14

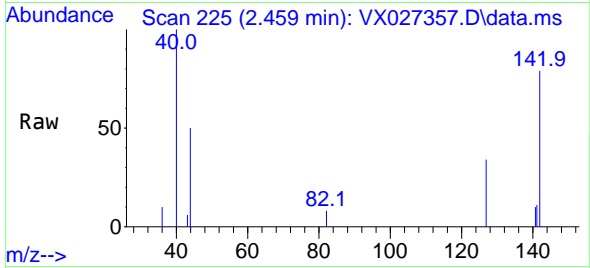
Tgt Ion: 64 Resp: 555
 Ion Ratio Lower Upper
 64 100
 66 6.0 25.3 37.9#



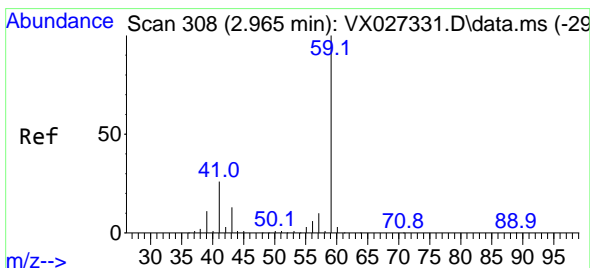
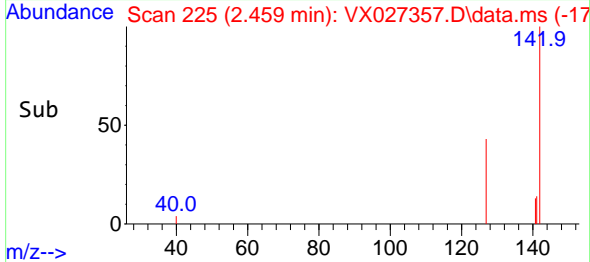
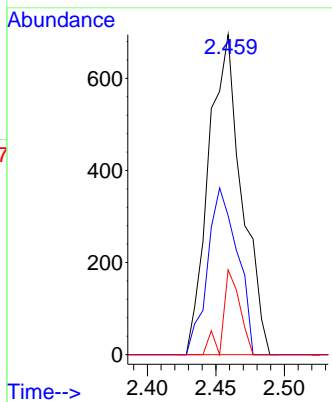


#10
Methyl Iodide
Concen: 0.201 ug/l
RT: 2.459 min Scan# 21
Delta R.T. 0.006 min
Lab File: VX027357.D
Acq: 09 Mar 2022 18:14

Instrument :
MSVOA_X
ClientSampleId :

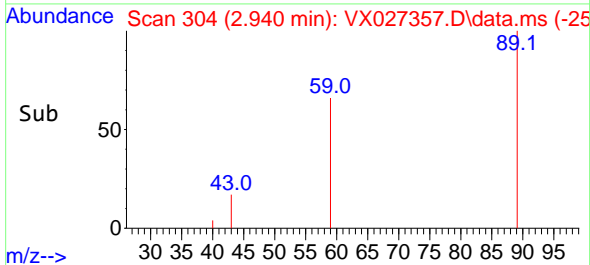
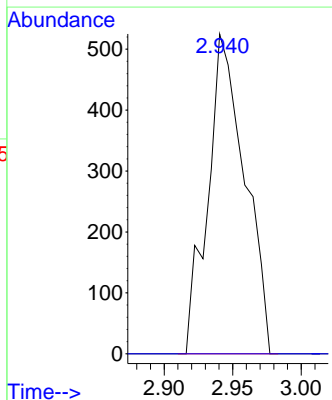
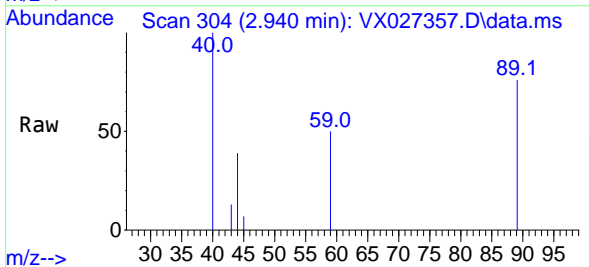


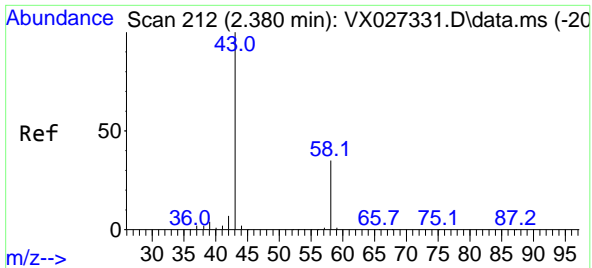
Tgt Ion:142 Resp: 1168
Ion Ratio Lower Upper
142 100
127 47.1 33.9 50.9
141 13.6 11.4 17.2



#11
Tert butyl alcohol
Concen: 1.055 ug/l
RT: 2.940 min Scan# 304
Delta R.T. -0.025 min
Lab File: VX027357.D
Acq: 09 Mar 2022 18:14

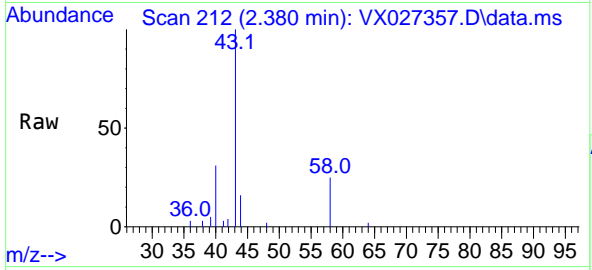
Tgt Ion: 59 Resp: 984
Ion Ratio Lower Upper
59 100
57 0.0 8.3 12.5#



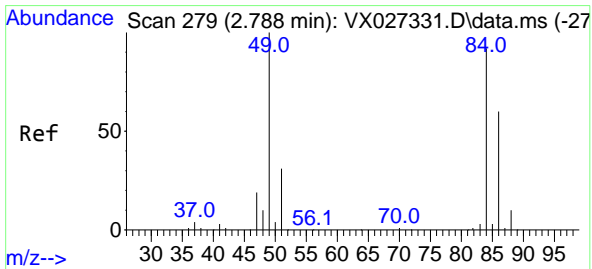
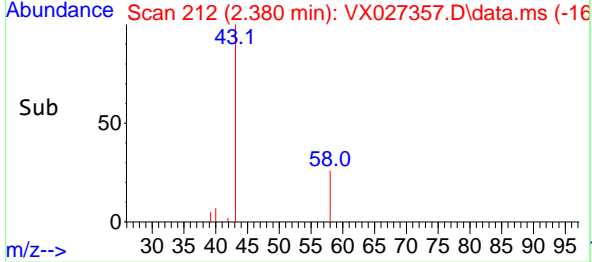
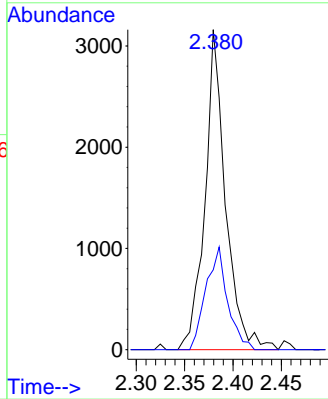


#16
 Acetone
 Concen: Below Cal
 RT: 2.380 min Scan# 216
 Delta R.T. -0.000 min
 Lab File: VX027357.D
 Acq: 09 Mar 2022 18:14

Instrument : MSVOA_X
 ClientSampleId :

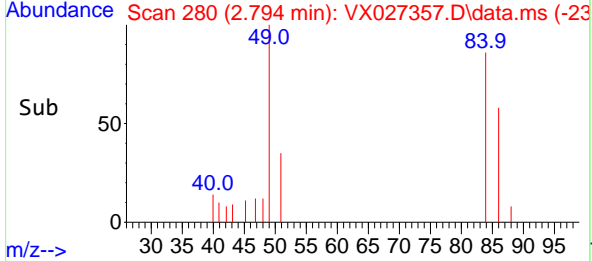
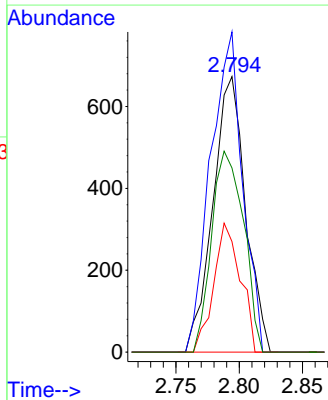
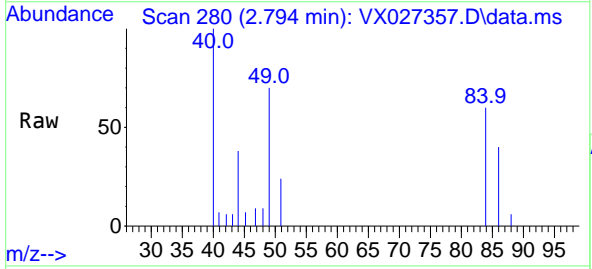


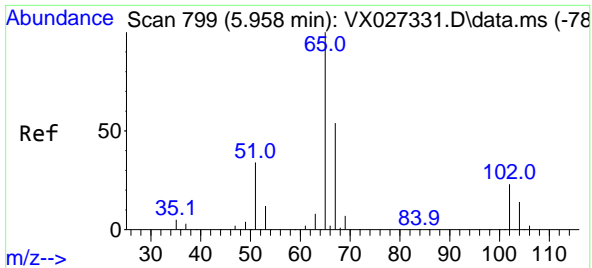
Tgt Ion: 43 Resp: 4683
 Ion Ratio Lower Upper
 43 100
 58 24.9 28.8 43.2#



#20
 Methylene Chloride
 Concen: 0.260 ug/l
 RT: 2.794 min Scan# 280
 Delta R.T. 0.006 min
 Lab File: VX027357.D
 Acq: 09 Mar 2022 18:14

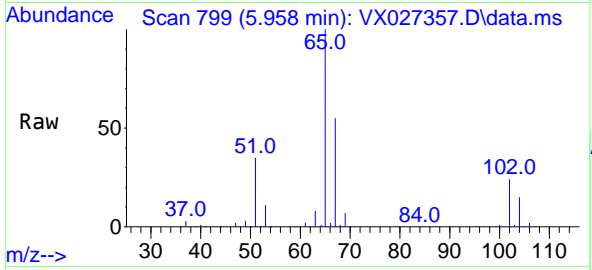
Tgt Ion: 84 Resp: 1207
 Ion Ratio Lower Upper
 84 100
 49 116.2 85.5 128.3
 51 40.1 26.6 39.8#
 86 66.9 51.5 77.3



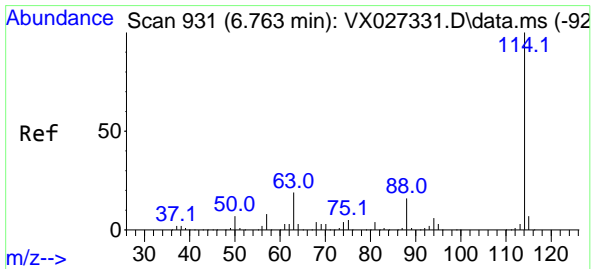
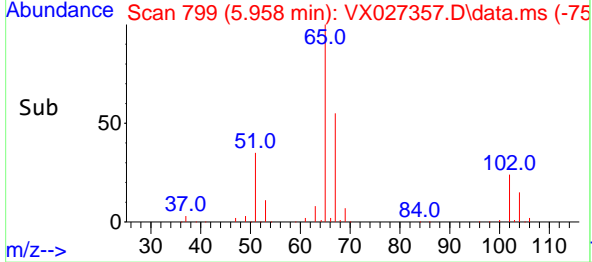
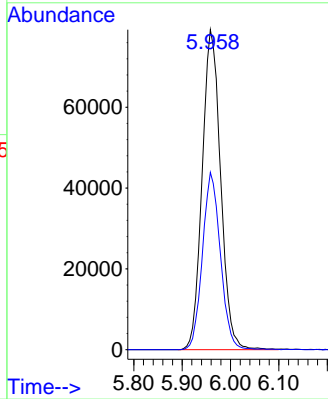


#33
 1,2-Dichloroethane-d4
 Concen: 44.137 ug/l
 RT: 5.958 min Scan# 799
 Delta R.T. 0.000 min
 Lab File: VX027357.D
 Acq: 09 Mar 2022 18:14

Instrument : MSVOA_X
 ClientSampleId :

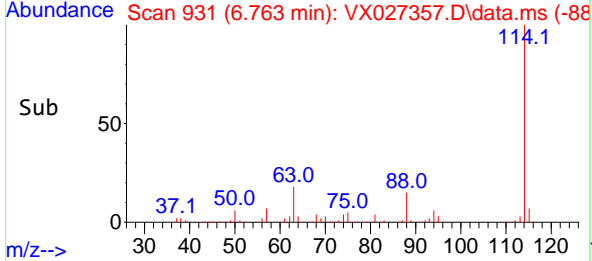
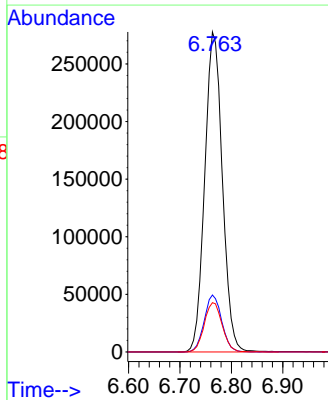
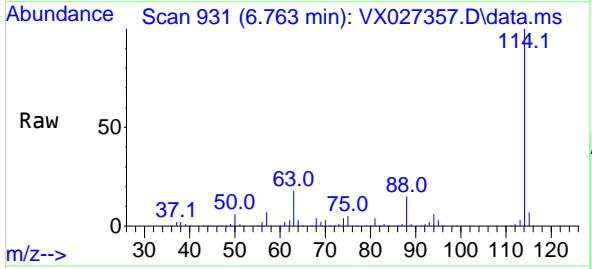


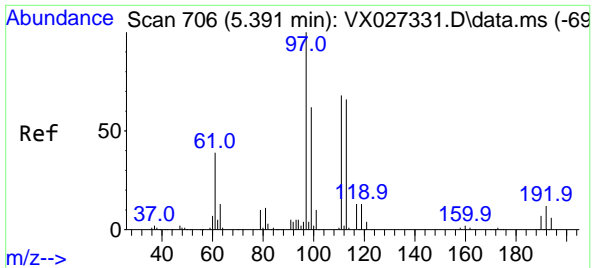
Tgt Ion: 65 Resp: 210063
 Ion Ratio Lower Upper
 65 100
 67 54.0 0.0 107.4



#34
 1,4-Difluorobenzene
 Concen: 50.000 ug/l
 RT: 6.763 min Scan# 931
 Delta R.T. -0.000 min
 Lab File: VX027357.D
 Acq: 09 Mar 2022 18:14

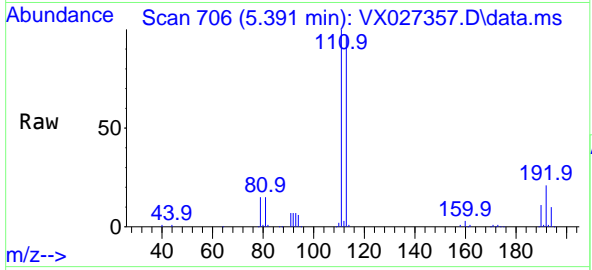
Tgt Ion: 114 Resp: 661104
 Ion Ratio Lower Upper
 114 100
 63 17.8 0.0 36.8
 88 15.4 0.0 32.4



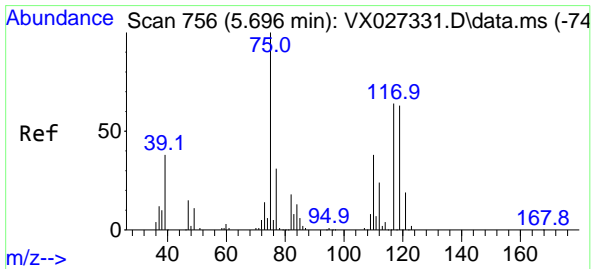
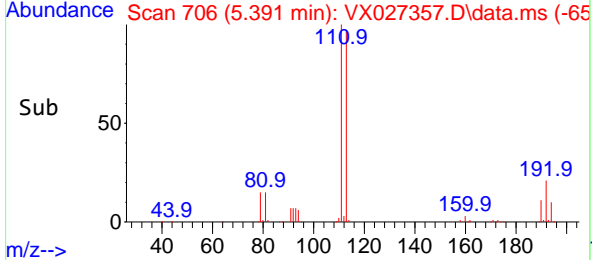
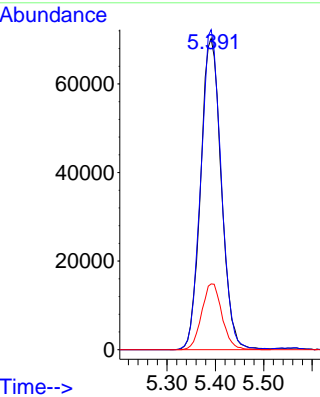


#35
 Dibromofluoromethane
 Concen: 48.692 ug/l
 RT: 5.391 min Scan# 706
 Delta R.T. 0.000 min
 Lab File: VX027357.D
 Acq: 09 Mar 2022 18:14

Instrument : MSVOA_X
 ClientSampleId :

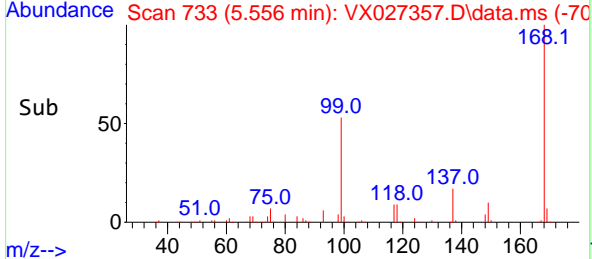
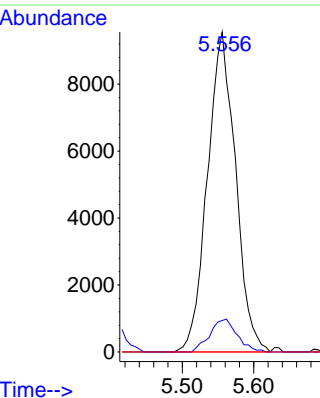
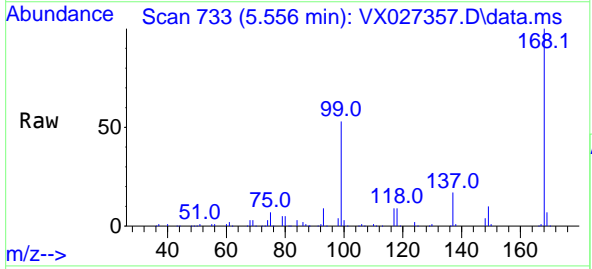


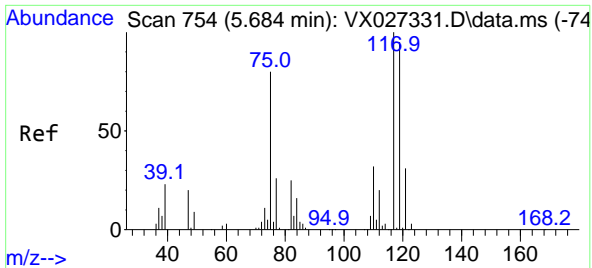
Tgt Ion:113 Resp: 207714
 Ion Ratio Lower Upper
 113 100
 111 101.2 82.8 124.2
 192 20.9 16.9 25.3



#36
 1,1-Dichloropropene
 Concen: 4.408 ug/l
 RT: 5.556 min Scan# 733
 Delta R.T. -0.140 min
 Lab File: VX027357.D
 Acq: 09 Mar 2022 18:14

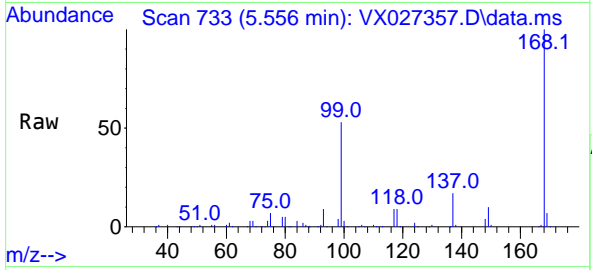
Tgt Ion: 75 Resp: 26110
 Ion Ratio Lower Upper
 75 100
 110 10.0 18.3 54.8#
 77 0.0 24.8 37.2#



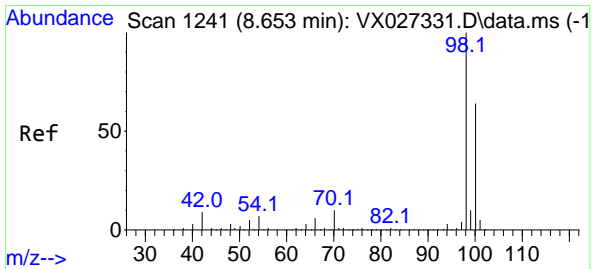
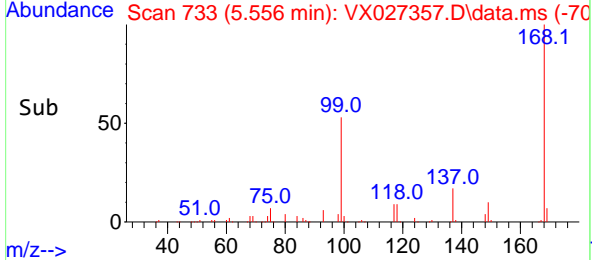
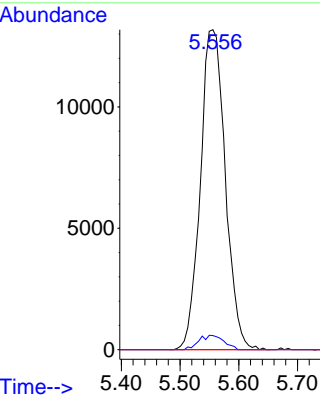


#38
 Carbon Tetrachloride
 Concen: 6.341 ug/l
 RT: 5.556 min Scan# 711
 Delta R.T. -0.128 min
 Lab File: VX027357.D
 Acq: 09 Mar 2022 18:14

Instrument : MSVOA_X
 ClientSampleId :

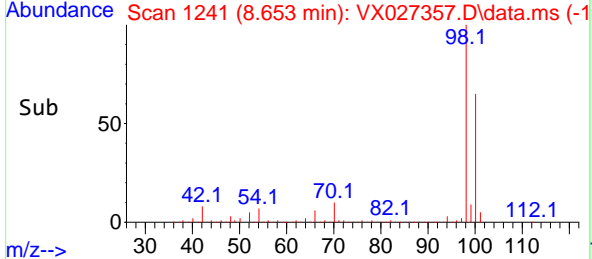
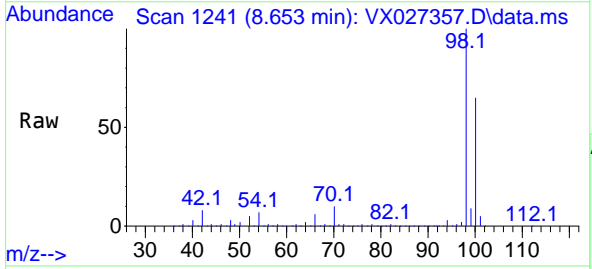
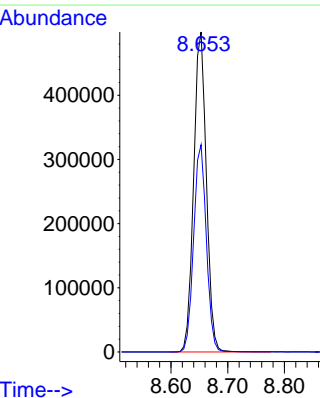


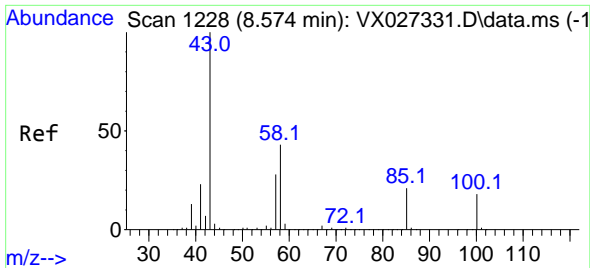
Tgt Ion:117 Resp: 38835
 Ion Ratio Lower Upper
 117 100
 119 4.4 77.3 115.9#
 121 0.0 24.2 36.2#



#50
 Toluene-d8
 Concen: 48.135 ug/l
 RT: 8.653 min Scan# 1241
 Delta R.T. -0.000 min
 Lab File: VX027357.D
 Acq: 09 Mar 2022 18:14

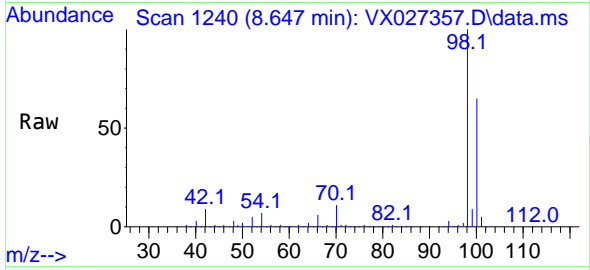
Tgt Ion: 98 Resp: 775199
 Ion Ratio Lower Upper
 98 100
 100 64.8 52.6 78.8



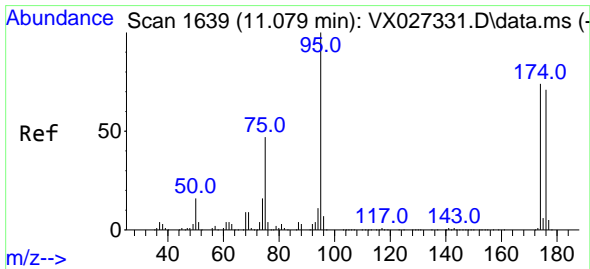
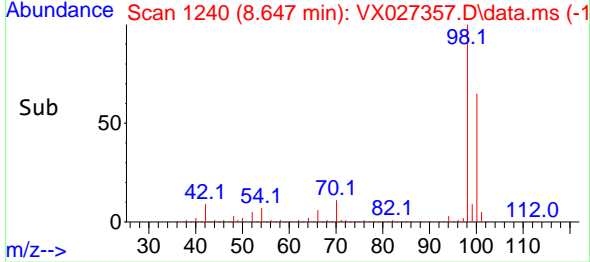
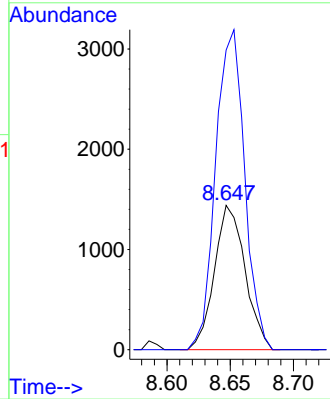


#51
 4-Methyl-2-Pentanone
 Concen: 0.386 ug/l
 RT: 8.647 min Scan# 11
 Delta R.T. 0.073 min
 Lab File: VX027357.D
 Acq: 09 Mar 2022 18:14

Instrument : MSVOA_X
 ClientSampleId :

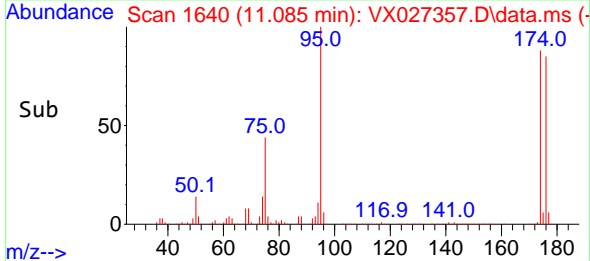
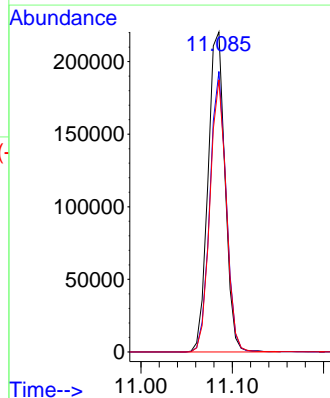
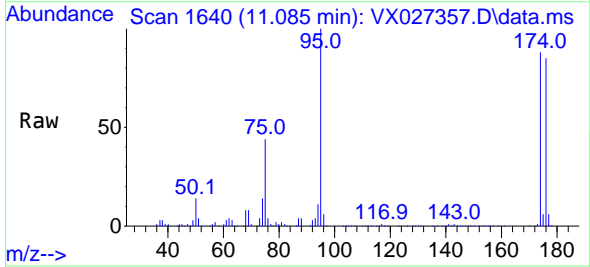


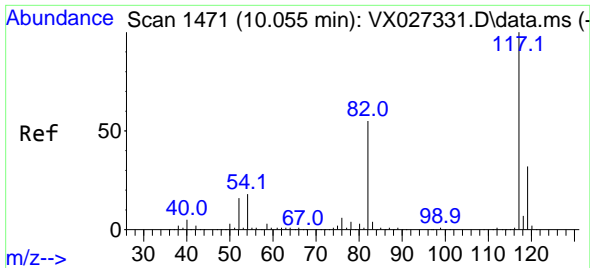
Tgt Ion: 43 Resp: 2430
 Ion Ratio Lower Upper
 43 100
 58 209.3 36.1 54.1#



#62
 4-Bromofluorobenzene
 Concen: 46.237 ug/l
 RT: 11.085 min Scan# 1640
 Delta R.T. 0.006 min
 Lab File: VX027357.D
 Acq: 09 Mar 2022 18:14

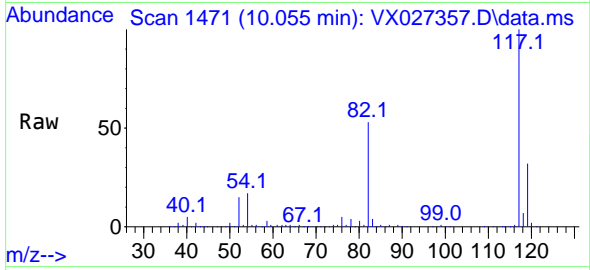
Tgt Ion: 95 Resp: 283804
 Ion Ratio Lower Upper
 95 100
 174 83.8 0.0 163.0
 176 81.8 0.0 155.0



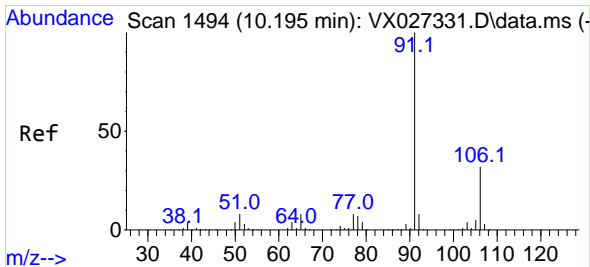
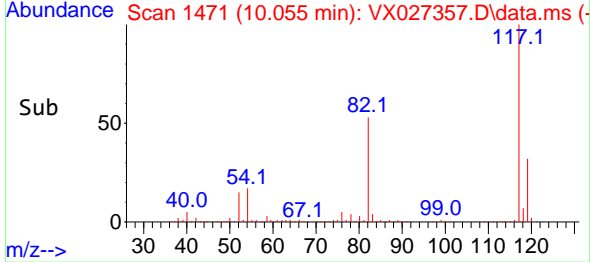
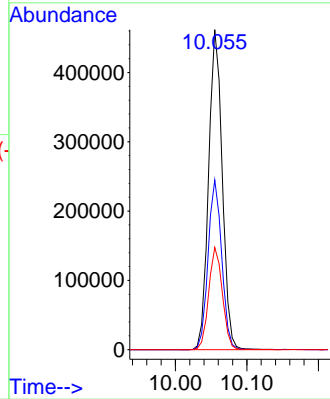


#63
 Chlorobenzene-d5
 Concen: 50.000 ug/l
 RT: 10.055 min Scan# 1471
 Delta R.T. 0.000 min
 Lab File: VX027357.D
 Acq: 09 Mar 2022 18:14

Instrument : MSVOA_X
 ClientSampleId :

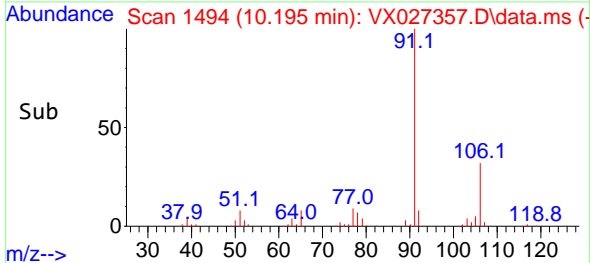
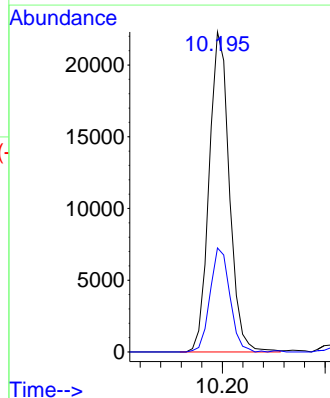
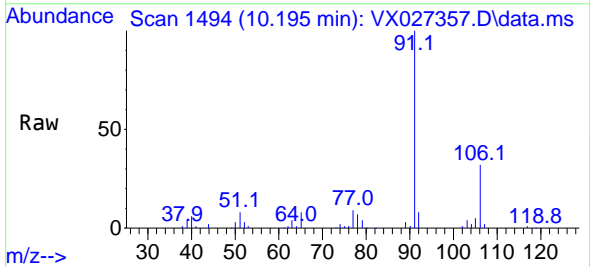


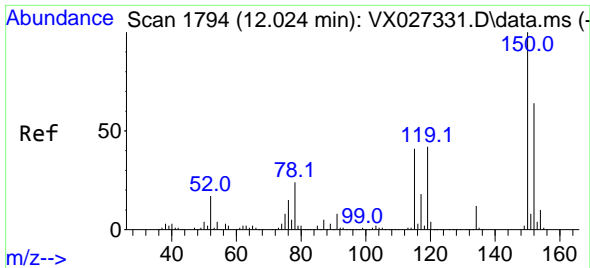
Tgt Ion:117 Resp: 612173
 Ion Ratio Lower Upper
 117 100
 82 53.1 41.8 62.8
 119 32.0 24.8 37.2



#67
 Ethyl Benzene
 Concen: 1.372 ug/l
 RT: 10.195 min Scan# 1494
 Delta R.T. 0.000 min
 Lab File: VX027357.D
 Acq: 09 Mar 2022 18:14

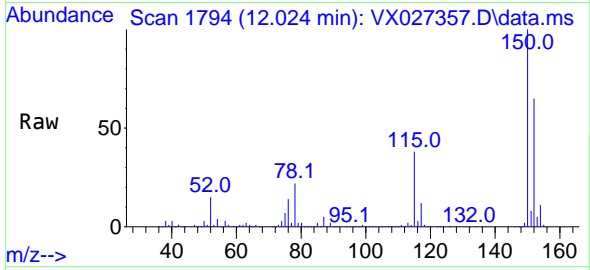
Tgt Ion: 91 Resp: 30464
 Ion Ratio Lower Upper
 91 100
 106 32.5 24.6 36.8



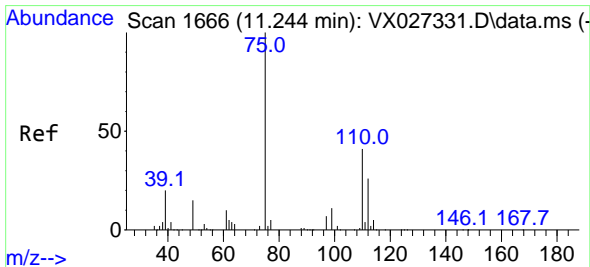
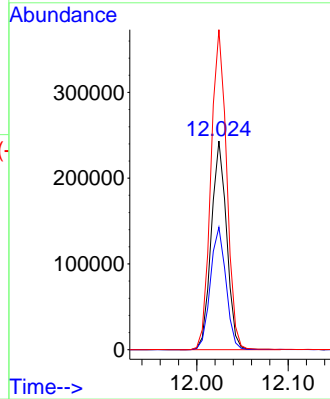
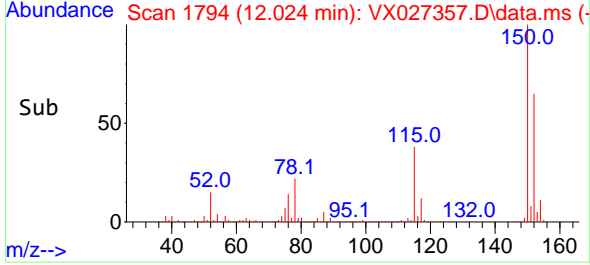


#72
 1,4-Dichlorobenzene-d4
 Concen: 50.000 ug/l
 RT: 12.024 min Scan# 11
 Delta R.T. 0.000 min
 Lab File: VX027357.D
 Acq: 09 Mar 2022 18:14

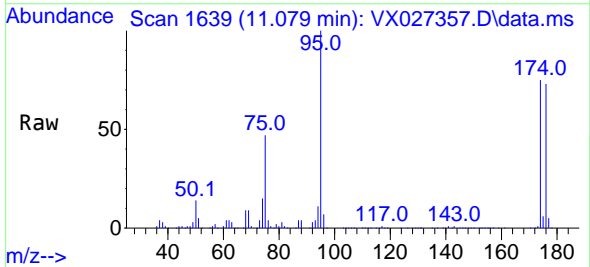
Instrument :
 MSVOA_X
 ClientSampleId :



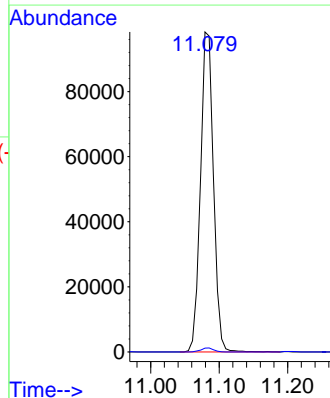
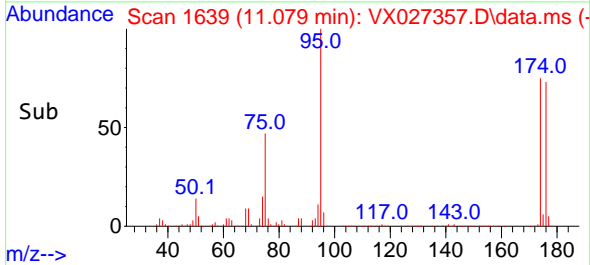
Tgt Ion:152 Resp: 283744
 Ion Ratio Lower Upper
 152 100
 115 59.6 37.5 112.7
 150 157.4 0.0 338.2

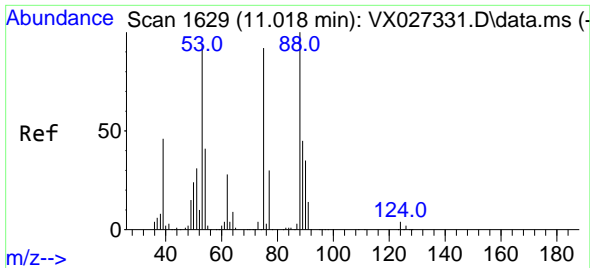


#76
 1,2,3-Trichloropropane
 Concen: 20.856 ug/l
 RT: 11.079 min Scan# 1639
 Delta R.T. -0.165 min
 Lab File: VX027357.D
 Acq: 09 Mar 2022 18:14



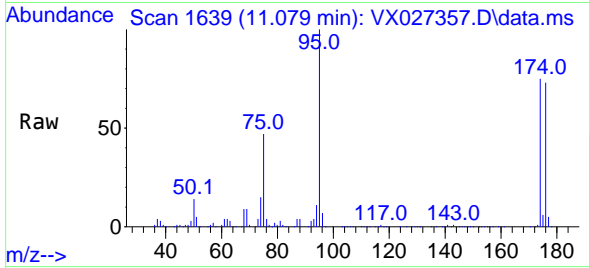
Tgt Ion: 75 Resp: 129839
 Ion Ratio Lower Upper
 75 100
 77 1.2 19.4 58.2#



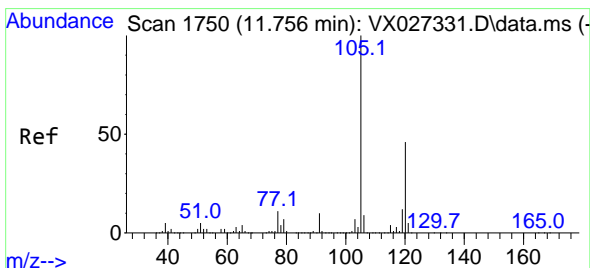
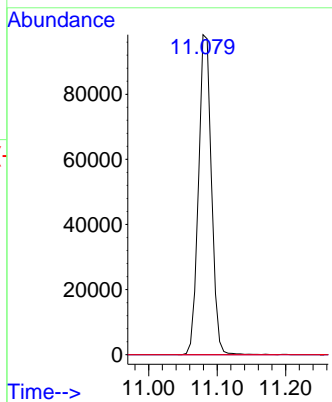
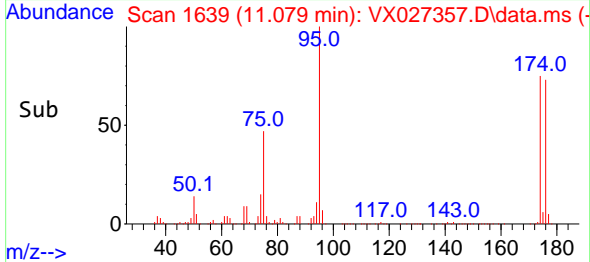


#81
 trans-1,4-Dichloro-2-butene
 Concen: 67.451 ug/l
 RT: 11.079 min Scan# 1639
 Delta R.T. 0.061 min
 Lab File: VX027357.D
 Acq: 09 Mar 2022 18:14

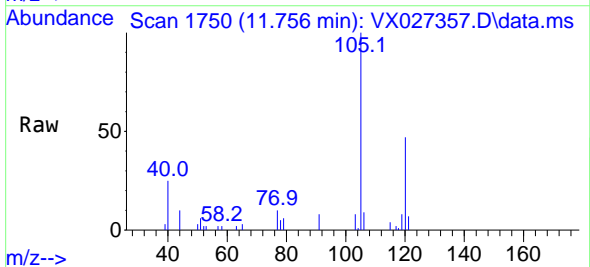
Instrument : MSVOA_X
 ClientSampleId :



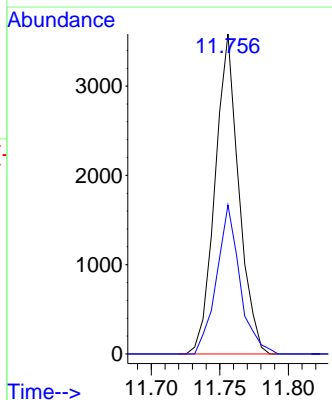
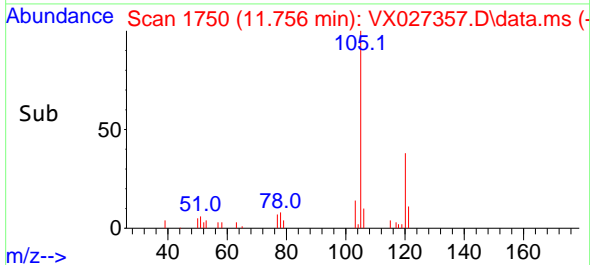
Tgt Ion: 75 Resp: 129839
 Ion Ratio Lower Upper
 75 100
 53 0.0 69.0 103.4#
 89 0.0 37.0 55.6#

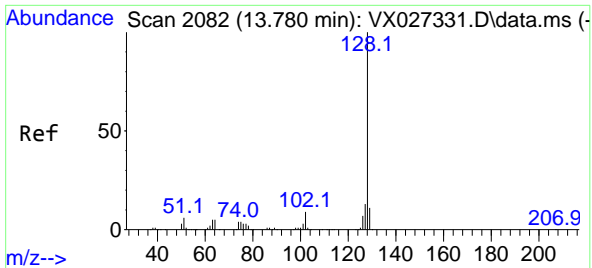


#84
 1,2,4-Trimethylbenzene
 Concen: 0.245 ug/l
 RT: 11.756 min Scan# 1750
 Delta R.T. -0.000 min
 Lab File: VX027357.D
 Acq: 09 Mar 2022 18:14



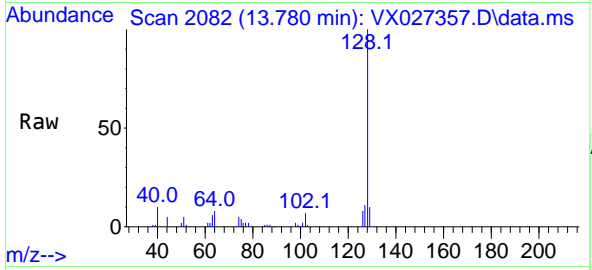
Tgt Ion: 105 Resp: 4323
 Ion Ratio Lower Upper
 105 100
 120 45.7 22.6 67.8





#95
 Naphthalene
 Concen: 0.715 ug/l
 RT: 13.780 min Scan# 20
 Delta R.T. 0.000 min
 Lab File: VX027357.D
 Acq: 09 Mar 2022 18:14

Instrument :
 MSVOA_X
 ClientSampleId :



Tgt Ion:128 Resp: 15283

Ion	Ratio	Lower	Upper
128	100		
127	11.4	10.2	15.4
129	11.4	8.7	13.1

