

Data Path : Z:\voasrv\HPCHEM1\MSVOA_X\Data\VX030924\
 Data File : VX040622.D
 Acq On : 08 Mar 2024 11:06
 Operator : JC/MD
 Sample : VX0309WBSD01
 Misc : 5.0mL/MSVOA_X/WATER
 ALS Vial : 4 Sample Multiplier: 1

Instrument :
 MSVOA_X
 ClientSampleId :
 VX0309WBSD01

Quant Time: Mar 08 23:51:18 2024
 Quant Method : Z:\voasrv\HPCHEM1\MSVOA_X\Method\624X030524W.M
 Quant Title : METHOD 624 VOLATILE ORGANIC ANALYSIS
 QLast Update : Tue Mar 05 13:21:29 2024
 Response via : Initial Calibration

Compound	R.T.	QIon	Response	Conc	Units	Dev(Min)
Internal Standards						
1) Bromochloromethane	4.891	128	14476	30.000	ug/l	0.00
28) 1,4-Difluorobenzene	6.757	114	76569	30.000	ug/l	0.00
57) Chlorobenzene-d5	10.055	117	73837	30.000	ug/l	0.00
System Monitoring Compounds						
27) 1,2-Dichloroethane-d4	5.952	65	41411	28.643	ug/l	0.00
Spiked Amount	30.000	Range 91 - 110	Recovery	=	95.467%	
60) 4-Bromofluorobenzene	11.079	95	39049	30.832	ug/l	0.00
Spiked Amount	30.000	Range 63 - 112	Recovery	=	102.767%	
63) Toluene-d8	8.647	98	89326	27.375	ug/l	0.00
Spiked Amount	30.000	Range 91 - 112	Recovery	=	91.233%	
Target Compounds						
						Qvalue
2) Dichlorodifluoromethane	1.167	85	17311	17.631	ug/l	98
3) Chloromethane	1.295	50	17413	17.309	ug/l	93
4) Vinyl Chloride	1.374	62	18821	17.311	ug/l	98
5) Bromomethane	1.605	94	15330	23.087	ug/l	94
6) Chloroethane	1.685	64	11300	17.691	ug/l	96
7) Trichlorofluoromethane	1.886	101	29701	17.943	ug/l	99
8) Diethyl Ether	2.130	74	9675	17.214	ug/l	94
9) 1,1,2-Trichlorotrifluo...	2.325	101	16866	18.601	ug/l	94
10) 1,1-Dichloroethene	2.319	96	15842	18.352	ug/l	97
11) Methyl Iodide	2.453	142	14971	14.339	ug/l	94
12) Methyl Acetate	2.703	43	26826	18.865	ug/l	98
13) Acrolein	2.233	56	25747	96.043	ug/l	97
14) Acrylonitrile	3.063	53	53072	94.783	ug/l	99
15) Acetone	2.380	58	14916	93.194	ug/l	79
16) Carbon Disulfide	2.514	76	39401	16.607	ug/l	98
17) Allyl chloride	2.660	41	27838	17.475	ug/l	90
18) Methylene Chloride	2.788	84	17900	18.162	ug/l	96
19) trans-1,2-Dichloroethene	3.093	96	16750	17.773	ug/l	98
20) Diisopropyl ether	3.758	45	57141	17.935	ug/l	92
21) 1,1-Dichloroethane	3.605	63	32131	17.526	ug/l	99
22) cis-1,2-Dichloroethene	4.489	96	19463	17.783	ug/l	94
23) tert-Butyl Alcohol	2.953	59	23612	89.252	ug/l #	100
24) Methyl tert-Butyl Ether	3.111	73	57374	18.009	ug/l	92
25) Chloroform	5.087	83	36317	18.099	ug/l	93
26) Cyclohexane	5.465	56	25952	17.540	ug/l #	96
29) 1,1-Dichloropropene	5.690	75	25460	19.210	ug/l	96
30) 2-Butanone	4.556	43	78802	97.435	ug/l	98
31) 2,2-Dichloropropane	4.477	77	27476	19.208	ug/l	96
32) 1,1,1-Trichloroethane	5.379	97	30983	18.552	ug/l	98
33) Carbon Tetrachloride	5.678	117	26194	18.642	ug/l	94
34) Benzene	6.038	78	67456	18.854	ug/l	98
35) Methacrylonitrile	4.916	41	15719	18.933	ug/l	94
36) 1,2-Dichloroethane	6.086	62	32651	19.738	ug/l	96
37) Trichloroethene	7.123	130	17847	18.562	ug/l	99
38) Methylcyclohexane	7.379	83	28145	19.721	ug/l	96
39) 1,2-Dichloropropane	7.428	63	17592	19.311	ug/l	96
40) Dibromomethane	7.574	93	14226	19.878	ug/l	95
41) Bromodichloromethane	7.818	83	27937	19.623	ug/l	100
42) Vinyl Acetate	3.721	43	267731	96.148	ug/l	99

Data Path : Z:\voasrv\HPCHEM1\MSVOA_X\Data\VX030924\
 Data File : VX040622.D
 Acq On : 08 Mar 2024 11:06
 Operator : JC/MD
 Sample : VX0309WBSD01
 Misc : 5.0mL/MSVOA_X/WATER
 ALS Vial : 4 Sample Multiplier: 1

Instrument :
 MSVOA_X
 ClientSampleId :
 VX0309WBSD01

Quant Time: Mar 08 23:51:18 2024
 Quant Method : Z:\voasrv\HPCHEM1\MSVOA_X\Method\624X030524W.M
 Quant Title : METHOD 624 VOLATILE ORGANIC ANALYSIS
 QLast Update : Tue Mar 05 13:21:29 2024
 Response via : Initial Calibration

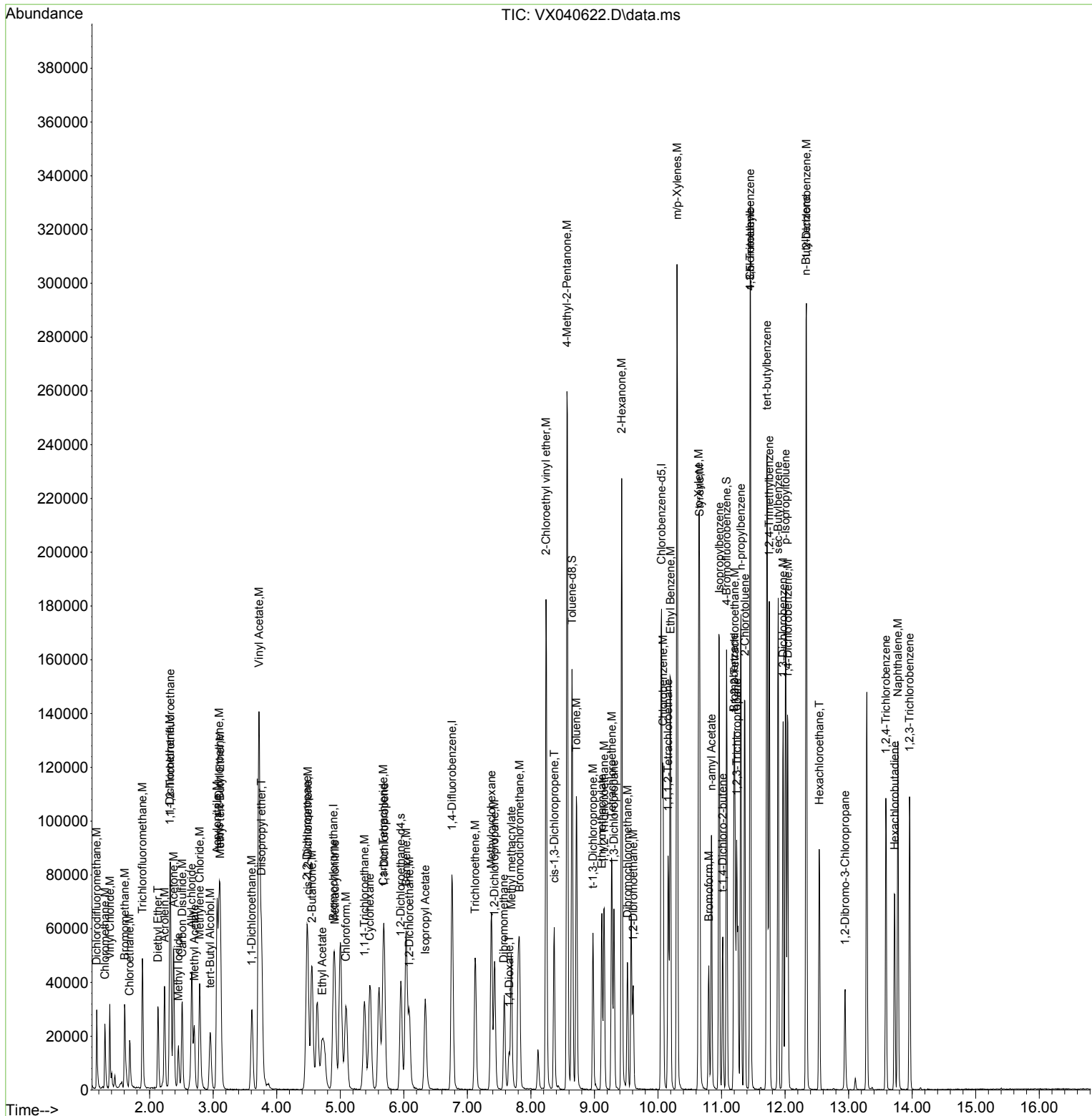
Compound	R.T.	QIon	Response	Conc	Units	Dev(Min)
43) Ethyl Acetate	4.715	43	30158	19.800	ug/l	97
44) Isopropyl Acetate	6.336	43	47087	19.367	ug/l	95
45) 1,4-Dioxane	7.659	88	10197	408.007	ug/l	94
46) Methyl methacrylate	7.690	41	24098	19.955	ug/l	93
47) n-amyl Acetate	10.842	43	39962	19.071	ug/l	98
48) t-1,3-Dichloropropene	8.976	75	25865	17.188	ug/l	96
49) cis-1,3-Dichloropropene	8.366	75	28282	18.450	ug/l	91
50) 1,1,2-Trichloroethane	9.153	97	16570	17.431	ug/l	98
51) Ethyl methacrylate	9.116	69	26230	17.526	ug/l	90
52) 1,3-Dichloropropane	9.305	76	27957	17.235	ug/l	99
53) Dibromochloromethane	9.519	129	18899	17.440	ug/l	99
54) 1,2-Dibromoethane	9.610	107	19158	18.213	ug/l	94
55) 2-Chloroethyl vinyl ether	8.238	63	68244	89.543	ug/l	99
56) Bromoform	10.799	173	15731	20.466	ug/l #	96
58) 4-Methyl-2-Pentanone	8.568	43	152580	92.801	ug/l	98
59) 2-Hexanone	9.427	43	121457	91.455	ug/l	95
61) Tetrachloroethene	9.275	164	15212	17.358	ug/l	97
62) Toluene	8.714	91	69486	17.087	ug/l	99
64) Chlorobenzene	10.080	112	48525	19.523	ug/l	95
65) 1,1,1,2-Tetrachloroethane	10.159	131	18490	19.504	ug/l	95
66) Ethyl Benzene	10.195	91	89662	19.122	ug/l	99
67) m/p-Xylenes	10.299	106	65736	37.965	ug/l	95
68) o-Xylene	10.640	106	31676	19.004	ug/l	97
69) Styrene	10.653	104	53664	19.163	ug/l	98
70) Isopropylbenzene	10.964	105	87070	19.332	ug/l	98
71) 1,1,2,2-Tetrachloroethane	11.207	83	32012	20.274	ug/l	97
72) 1,2,3-Trichloropropane	11.238	75	35570	25.037	ug/l	90
73) Bromobenzene	11.195	156	21517	20.180	ug/l	91
74) n-propylbenzene	11.305	91	109368	19.661	ug/l	98
75) 2-Chlorotoluene	11.366	91	64224	19.456	ug/l	98
76) 1,3,5-Trimethylbenzene	11.451	105	76844	19.380	ug/l	97
77) t-1,4-Dichloro-2-butene	11.018	75	8654	19.601	ug/l	85
78) 4-Chlorotoluene	11.451	91	76547	19.439	ug/l	98
79) tert-butylbenzene	11.713	119	69993	18.913	ug/l	96
80) 1,2,4-Trimethylbenzene	11.750	105	75385	19.296	ug/l	97
81) sec-Butylbenzene	11.890	105	92241	18.878	ug/l	99
82) p-Isopropyltoluene	12.006	119	77524	19.383	ug/l	99
83) 1,3-Dichlorobenzene	11.969	146	40504	19.523	ug/l	97
84) 1,4-Dichlorobenzene	12.043	146	40839	19.249	ug/l	99
85) n-Butylbenzene	12.329	91	73209	18.811	ug/l	98
86) Hexachloroethane	12.536	117	12648	18.124	ug/l	92
87) 1,2-Dichlorobenzene	12.335	146	39086	19.387	ug/l	100
88) 1,2-Dibromo-3-Chloropr...	12.945	75	7763	18.387	ug/l	94
89) 1,2,4-Trichlorobenzene	13.585	180	23177	17.074	ug/l	96
90) Hexachlorobutadiene	13.725	225	9777	17.812	ug/l	99
91) Naphthalene	13.774	128	72570	16.389	ug/l	99
92) 1,2,3-Trichlorobenzene	13.957	180	23014	17.194	ug/l	100

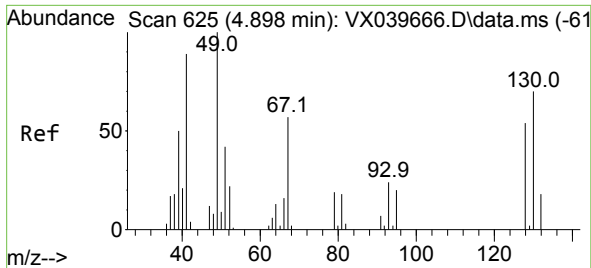
(#) = qualifier out of range (m) = manual integration (+) = signals summed

Data Path : Z:\voasrv\HPCHEM1\MSVOA_X\Data\VX030924\
 Data File : VX040622.D
 Acq On : 08 Mar 2024 11:06
 Operator : JC/MD
 Sample : VX0309WBSD01
 Misc : 5.0mL/MSVOA_X/WATER
 ALS Vial : 4 Sample Multiplier: 1

Instrument :
 MSVOA_X
 ClientSampleId :
 VX0309WBSD01

Quant Time: Mar 08 23:51:18 2024
 Quant Method : Z:\voasrv\HPCHEM1\MSVOA_X\Method\624X030524W.M
 Quant Title : METHOD 624 VOLATILE ORGANIC ANALYSIS
 QLast Update : Tue Mar 05 13:21:29 2024
 Response via : Initial Calibration

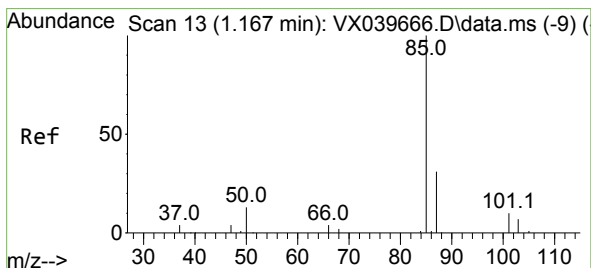
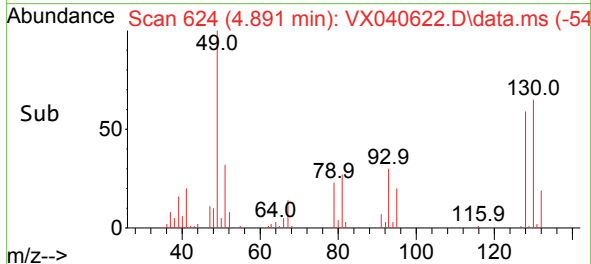
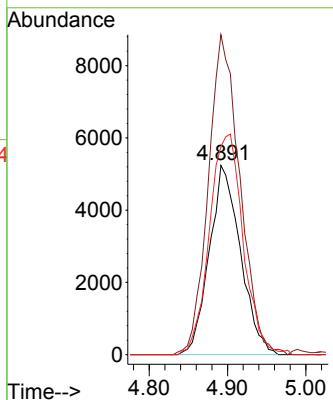
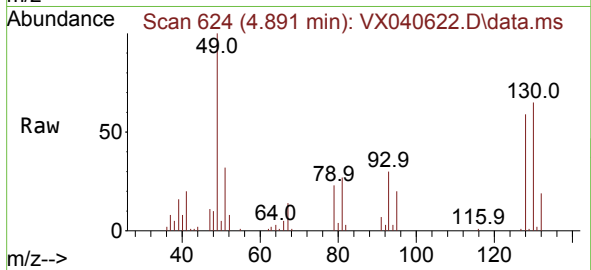




#1
 Bromochloromethane
 Concen: 30.000 ug/l
 RT: 4.891 min Scan# 61
 Delta R.T. -0.007 min
 Lab File: VX040622.D
 Acq: 08 Mar 2024 11:06

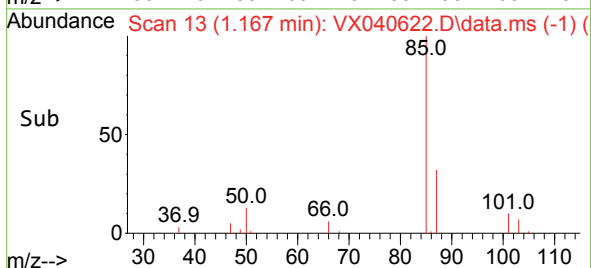
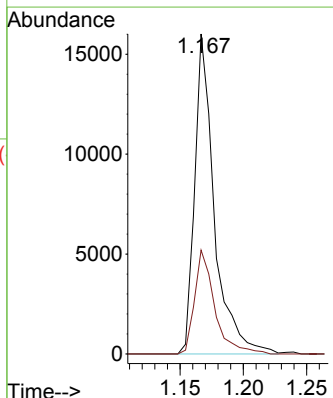
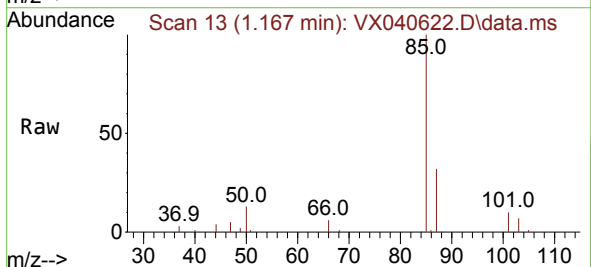
Instrument :
 MSVOA_X
 ClientSampleId :
 VX0309WBSD01

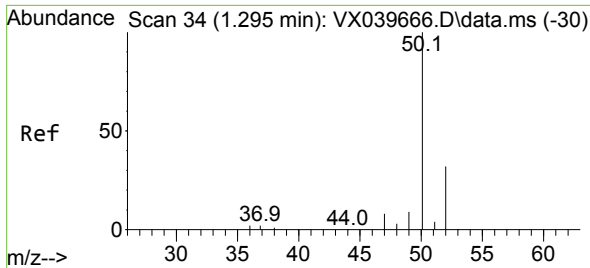
Tgt Ion	Resp	Lower	Upper
128	14476		
100	100		
49	170.9	0.0	444.0
130	126.0	0.0	297.8



#2
 Dichlorodifluoromethane
 Concen: 17.631 ug/l
 RT: 1.167 min Scan# 13
 Delta R.T. -0.000 min
 Lab File: VX040622.D
 Acq: 08 Mar 2024 11:06

Tgt Ion	Resp	Lower	Upper
85	17311		
100	100		
87	32.5	16.7	50.1

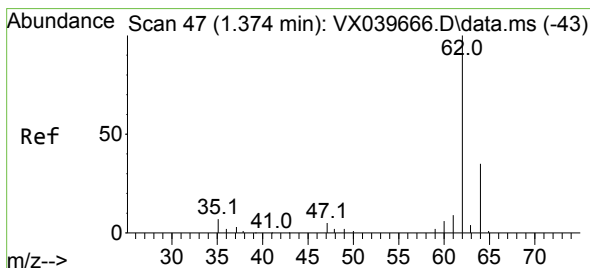
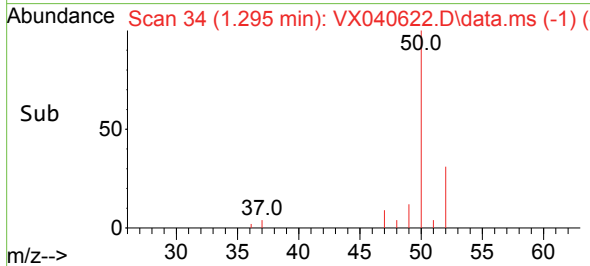
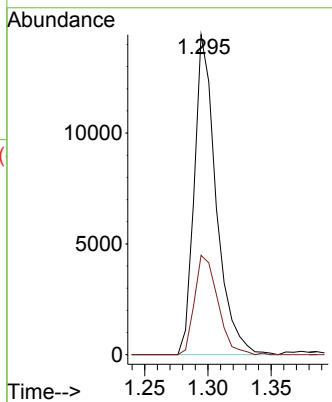
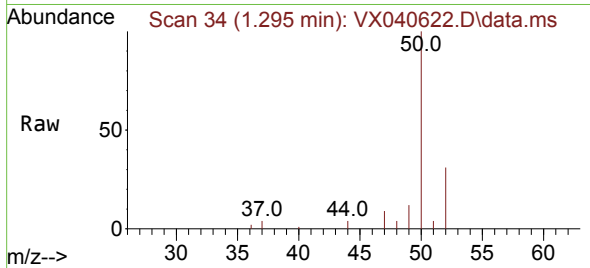




#3
 Chloromethane
 Concen: 17.309 ug/l
 RT: 1.295 min Scan# 34
 Delta R.T. -0.000 min
 Lab File: VX040622.D
 Acq: 08 Mar 2024 11:06

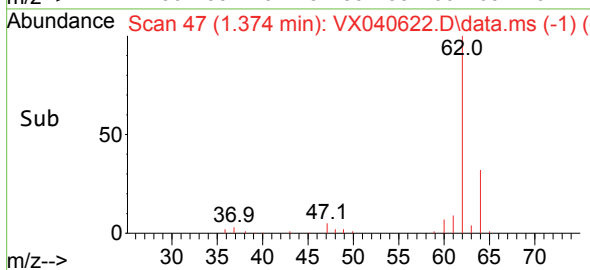
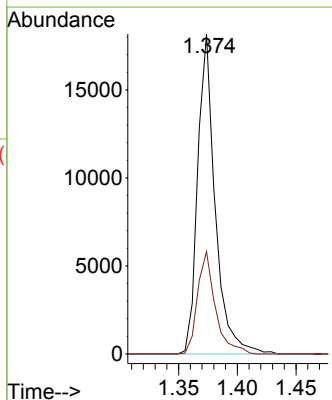
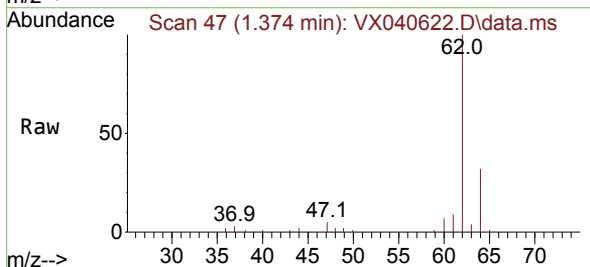
Instrument :
 MSVOA_X
 ClientSampleId :
 VX0309WBSD01

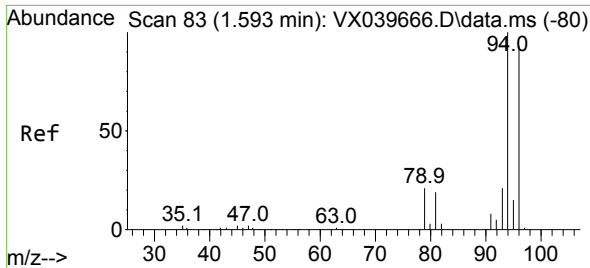
Tgt Ion: 50 Resp: 17413
 Ion Ratio Lower Upper
 50 100
 52 31.0 27.8 41.8



#4
 Vinyl Chloride
 Concen: 17.311 ug/l
 RT: 1.374 min Scan# 47
 Delta R.T. -0.000 min
 Lab File: VX040622.D
 Acq: 08 Mar 2024 11:06

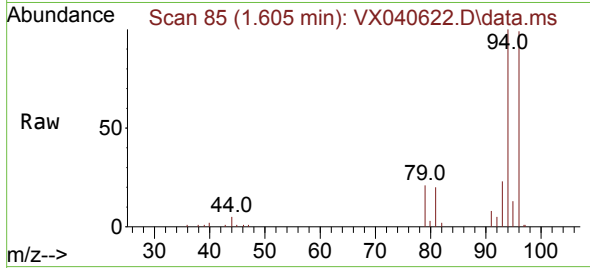
Tgt Ion: 62 Resp: 18821
 Ion Ratio Lower Upper
 62 100
 64 32.0 26.3 39.5



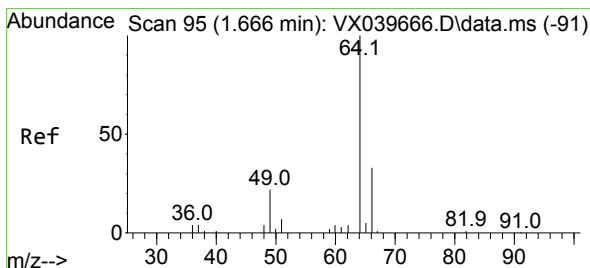
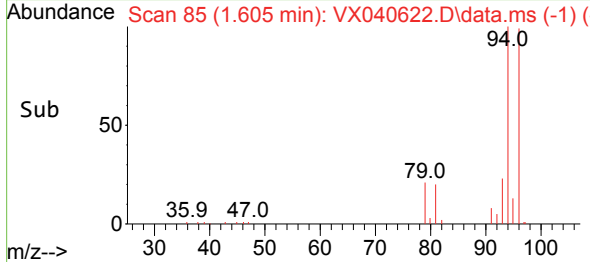
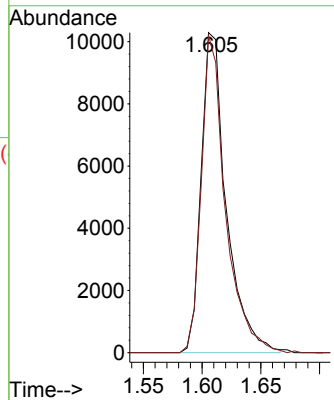


#5
 Bromomethane
 Concen: 23.087 ug/l
 RT: 1.605 min Scan# 81
 Delta R.T. 0.012 min
 Lab File: VX040622.D
 Acq: 08 Mar 2024 11:06

Instrument :
 MSVOA_X
 ClientSampleId :
 VX0309WBSD01

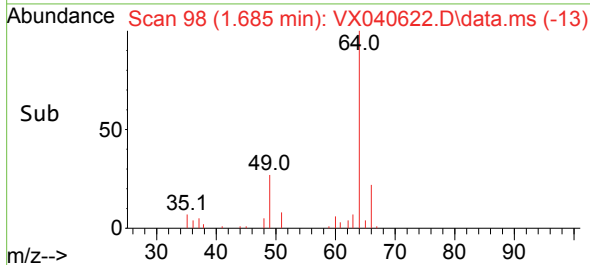
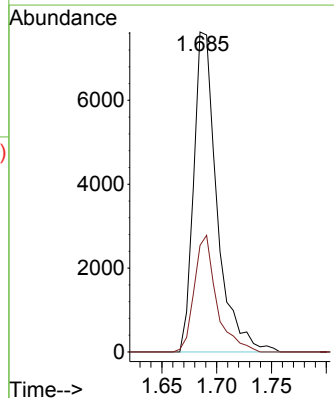
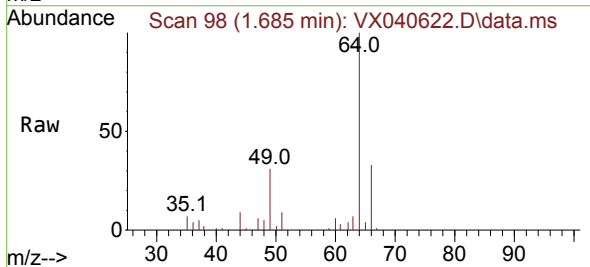


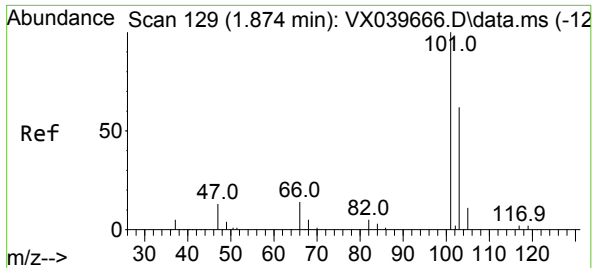
Tgt Ion: 94 Resp: 15330
 Ion Ratio Lower Upper
 94 100
 96 99.1 74.9 112.3



#6
 Chloroethane
 Concen: 17.691 ug/l
 RT: 1.685 min Scan# 98
 Delta R.T. 0.019 min
 Lab File: VX040622.D
 Acq: 08 Mar 2024 11:06

Tgt Ion: 64 Resp: 11300
 Ion Ratio Lower Upper
 64 100
 66 33.3 25.0 37.6

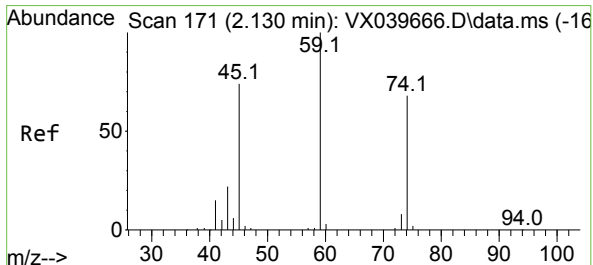
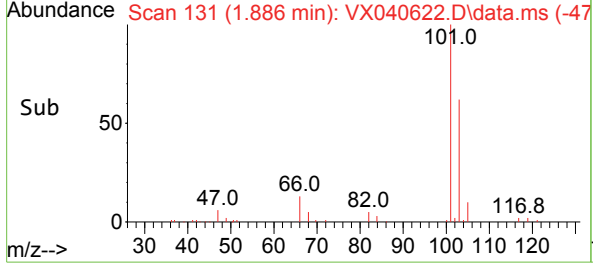
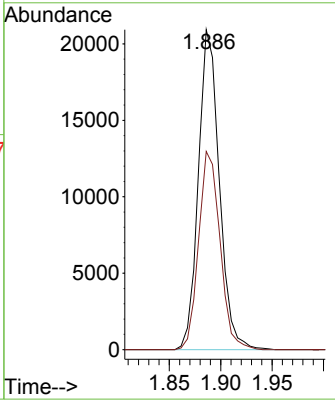
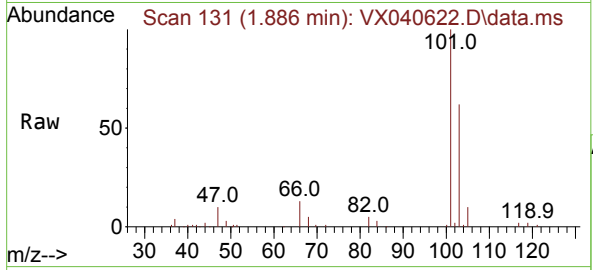




#7
 Trichlorofluoromethane
 Concen: 17.943 ug/l
 RT: 1.886 min Scan# 11
 Delta R.T. 0.012 min
 Lab File: VX040622.D
 Acq: 08 Mar 2024 11:06

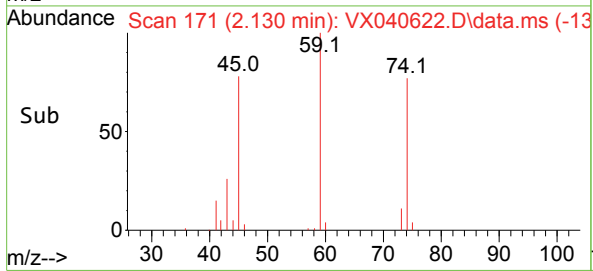
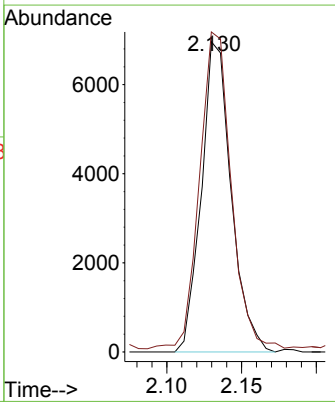
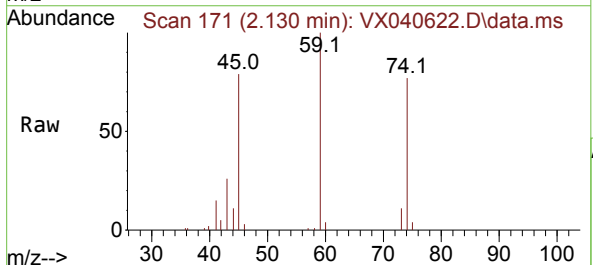
Instrument : MSVOA_X
 ClientSampleId : VX0309WBSD01

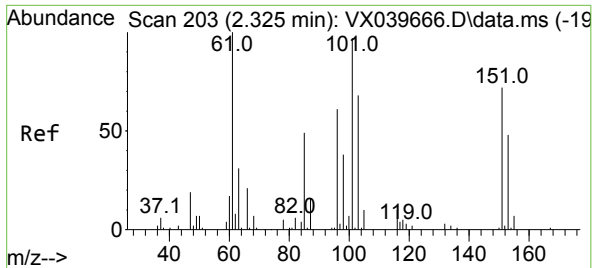
Tgt Ion:101 Resp: 29701
 Ion Ratio Lower Upper
 101 100
 103 61.9 49.1 73.7



#8
 Diethyl Ether
 Concen: 17.214 ug/l
 RT: 2.130 min Scan# 171
 Delta R.T. -0.000 min
 Lab File: VX040622.D
 Acq: 08 Mar 2024 11:06

Tgt Ion: 74 Resp: 9675
 Ion Ratio Lower Upper
 74 100
 45 108.6 20.5 184.5

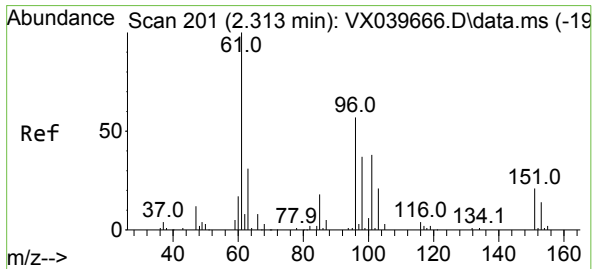
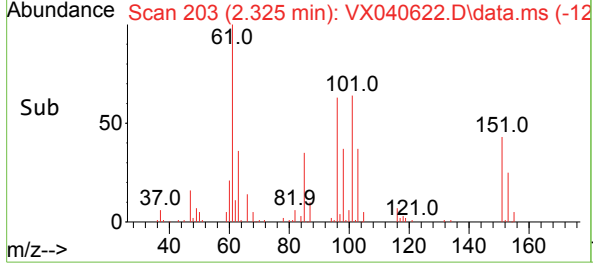
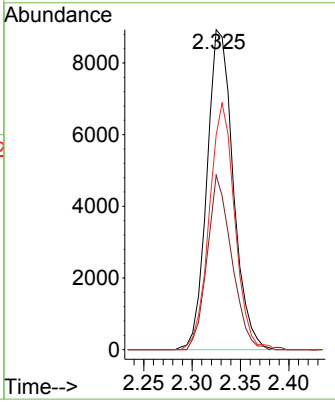
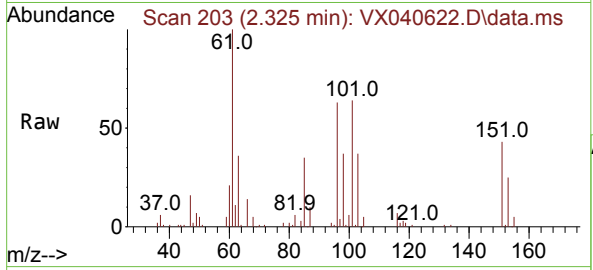




#9
 1,1,2-Trichlorotrifluoroethane
 Concen: 18.601 ug/l
 RT: 2.325 min Scan# 201
 Delta R.T. -0.000 min
 Lab File: VX040622.D
 Acq: 08 Mar 2024 11:06

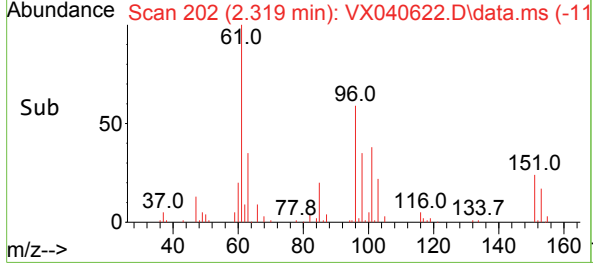
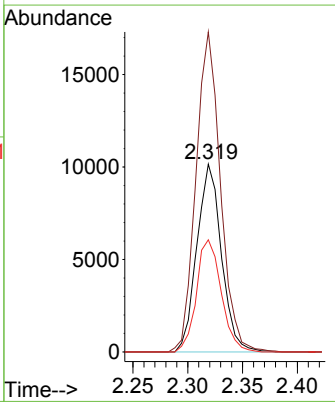
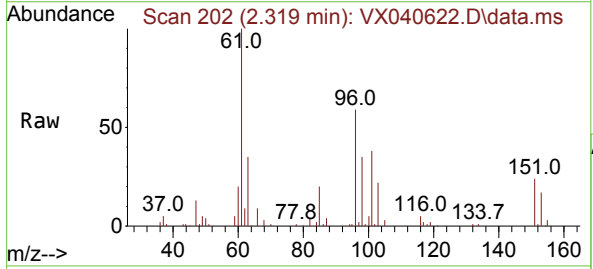
Instrument : MSVOA_X
 ClientSampleId : VX0309WBSD01

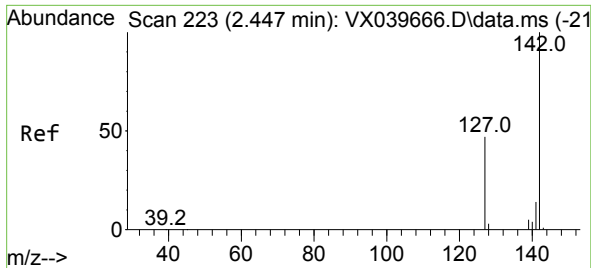
Tgt Ion	Resp	Lower	Upper
101	16866		
101	100		
85	50.8	0.0	95.2
151	74.4	0.0	136.8



#10
 1,1-Dichloroethene
 Concen: 18.352 ug/l
 RT: 2.319 min Scan# 202
 Delta R.T. 0.006 min
 Lab File: VX040622.D
 Acq: 08 Mar 2024 11:06

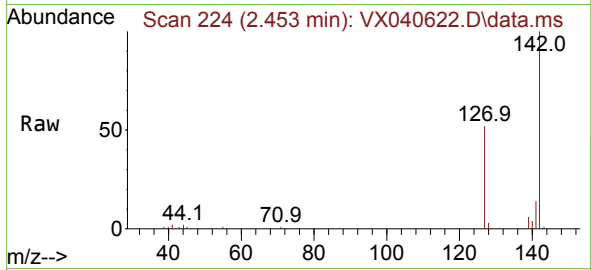
Tgt Ion	Resp	Lower	Upper
96	15842		
96	100		
61	169.8	138.3	207.5
98	59.7	49.8	74.6



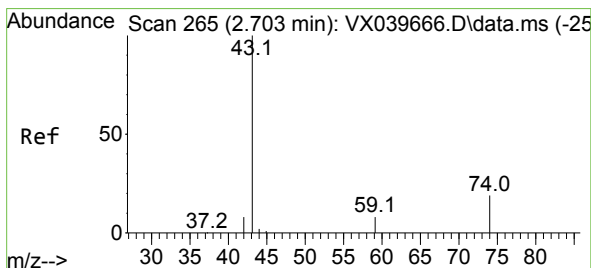
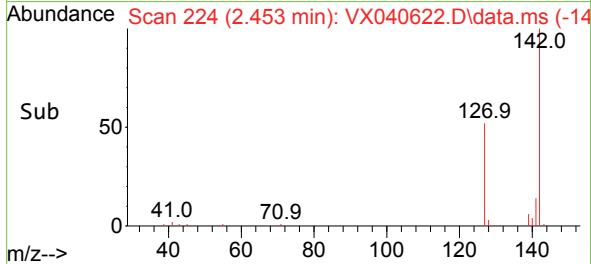
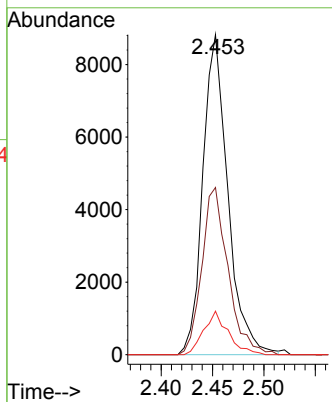


#11
Methyl Iodide
Concen: 14.339 ug/l
RT: 2.453 min Scan# 21
Delta R.T. 0.006 min
Lab File: VX040622.D
Acq: 08 Mar 2024 11:06

Instrument : MSVOA_X
ClientSampleId : VX0309WBSD01

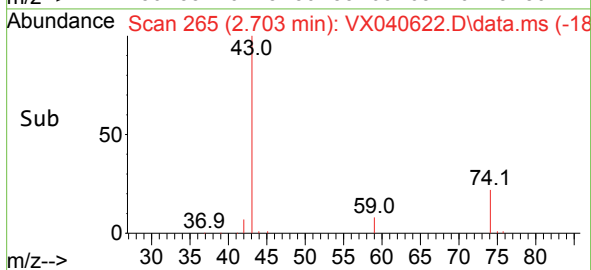
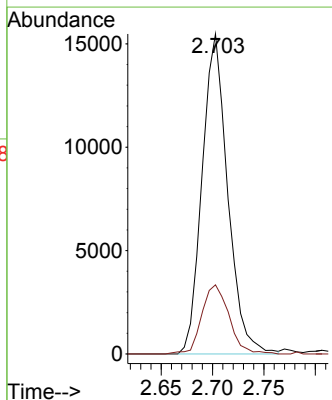
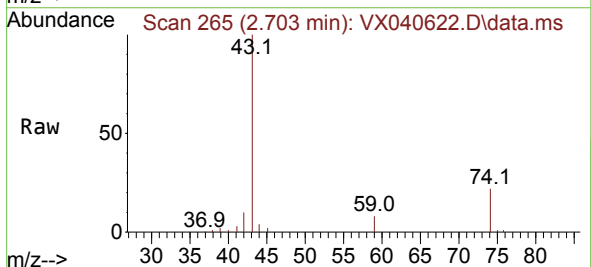


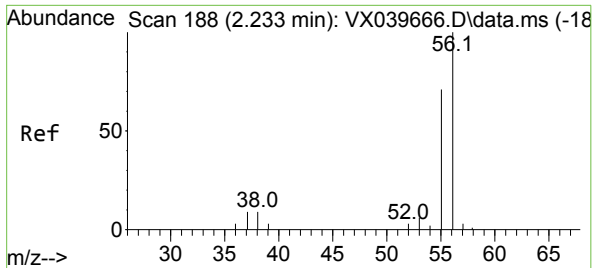
Tgt Ion:142 Resp: 14971
Ion Ratio Lower Upper
142 100
127 52.5 23.8 71.4
141 13.7 6.9 20.6



#12
Methyl Acetate
Concen: 18.865 ug/l
RT: 2.703 min Scan# 265
Delta R.T. -0.000 min
Lab File: VX040622.D
Acq: 08 Mar 2024 11:06

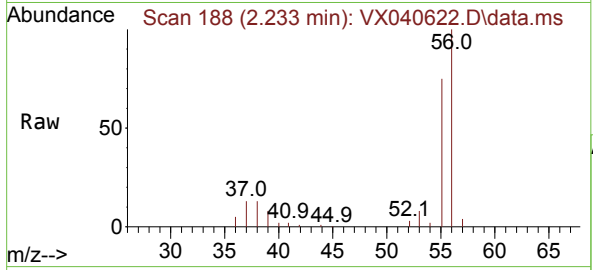
Tgt Ion: 43 Resp: 26826
Ion Ratio Lower Upper
43 100
74 21.4 17.8 26.6



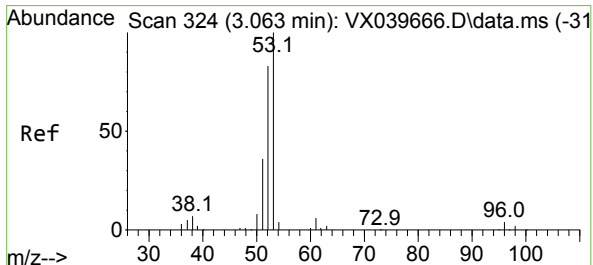
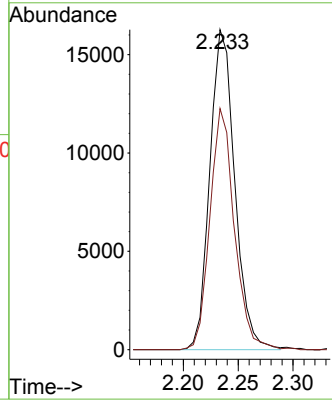
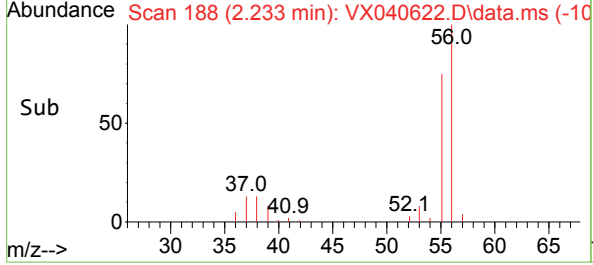


#13
 Acrolein
 Concen: 96.043 ug/l
 RT: 2.233 min Scan# 188
 Delta R.T. 0.000 min
 Lab File: VX040622.D
 Acq: 08 Mar 2024 11:06

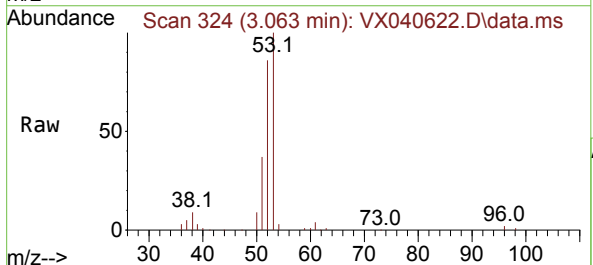
Instrument : MSVOA_X
 ClientSampleId : VX0309WBSD01



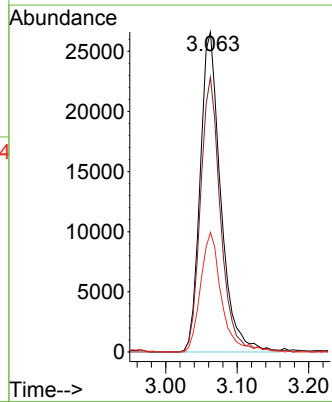
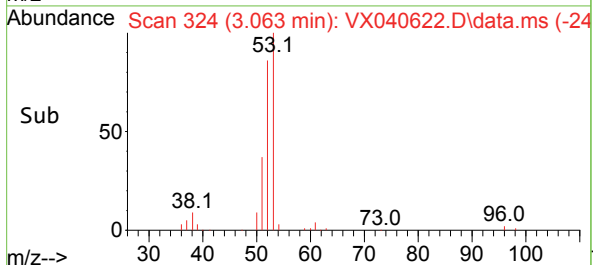
Tgt Ion: 56 Resp: 25747
 Ion Ratio Lower Upper
 56 100
 55 73.8 57.2 85.8

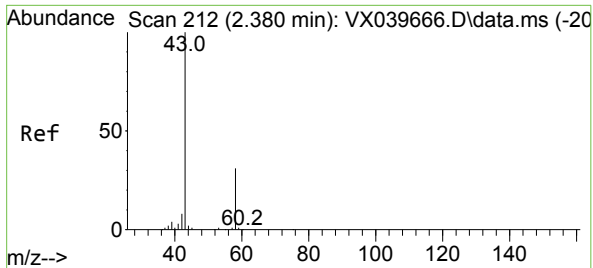


#14
 Acrylonitrile
 Concen: 94.783 ug/l
 RT: 3.063 min Scan# 324
 Delta R.T. -0.000 min
 Lab File: VX040622.D
 Acq: 08 Mar 2024 11:06



Tgt Ion: 53 Resp: 53072
 Ion Ratio Lower Upper
 53 100
 52 83.0 41.9 125.6
 51 36.8 18.3 54.9

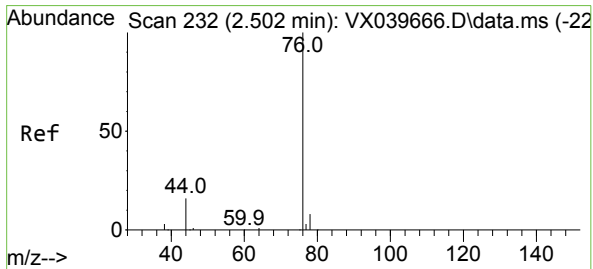
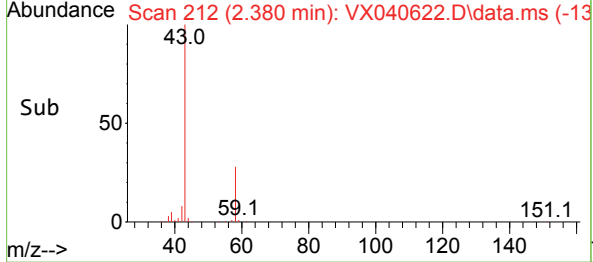
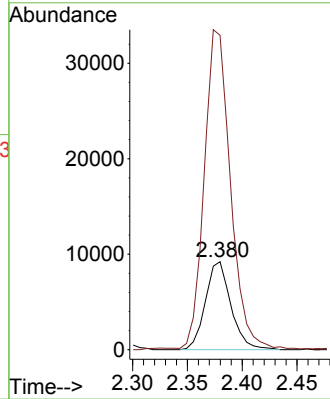
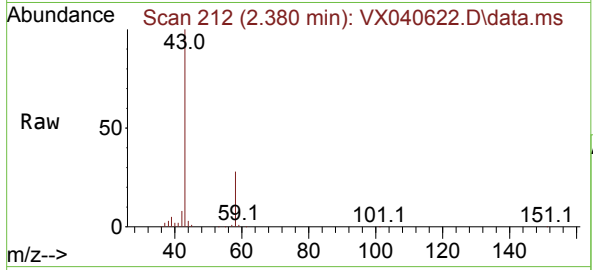




#15
 Acetone
 Concen: 93.194 ug/l
 RT: 2.380 min Scan# 211
 Delta R.T. -0.000 min
 Lab File: VX040622.D
 Acq: 08 Mar 2024 11:06

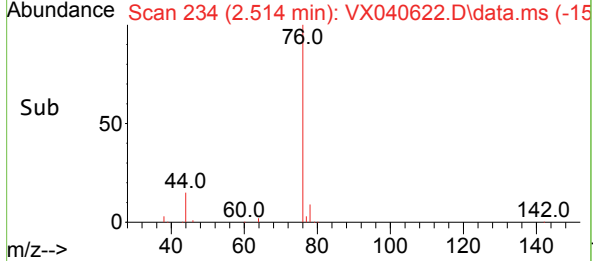
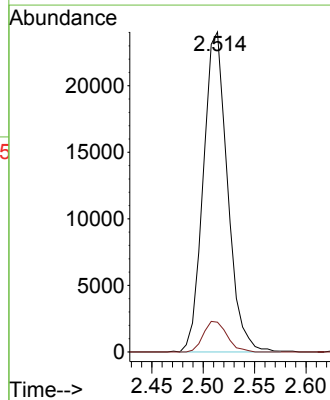
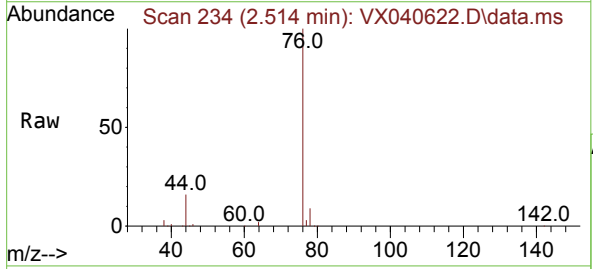
Instrument : MSVOA_X
 ClientSampleId : VX0309WBSD01

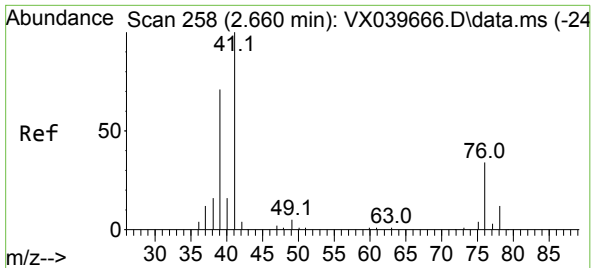
Tgt Ion: 58 Resp: 14916
 Ion Ratio Lower Upper
 58 100
 43 355.5 249.9 374.9



#16
 Carbon Disulfide
 Concen: 16.607 ug/l
 RT: 2.514 min Scan# 234
 Delta R.T. 0.012 min
 Lab File: VX040622.D
 Acq: 08 Mar 2024 11:06

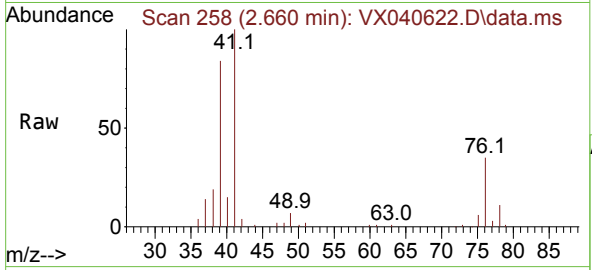
Tgt Ion: 76 Resp: 39401
 Ion Ratio Lower Upper
 76 100
 78 9.3 8.0 12.0



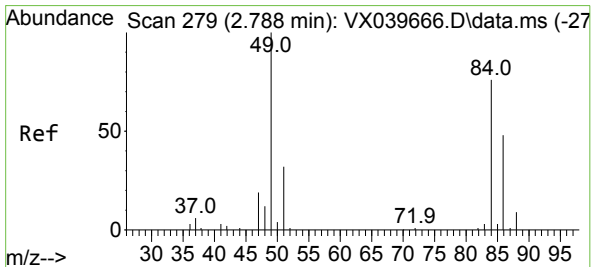
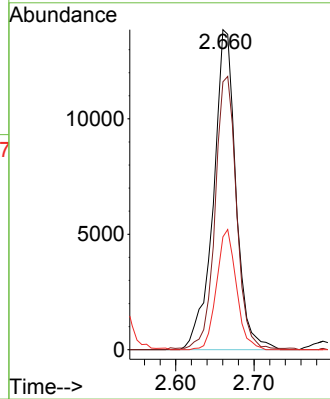
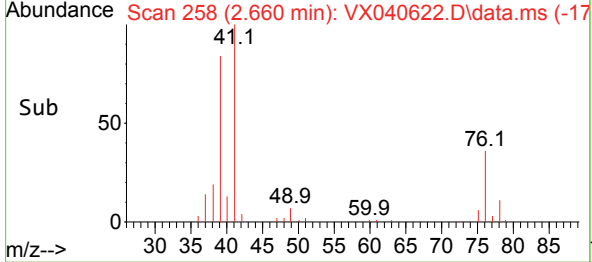


#17
 Allyl chloride
 Concen: 17.475 ug/l
 RT: 2.660 min Scan# 21
 Delta R.T. 0.000 min
 Lab File: VX040622.D
 Acq: 08 Mar 2024 11:06

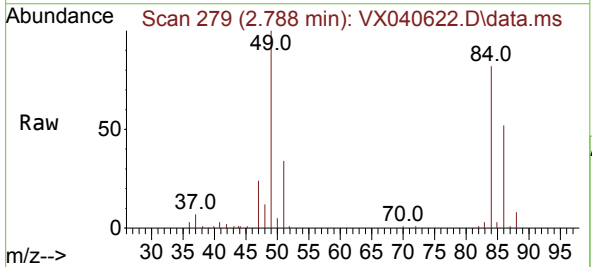
Instrument :
 MSVOA_X
 ClientSampleId :
 VX0309WBSD01



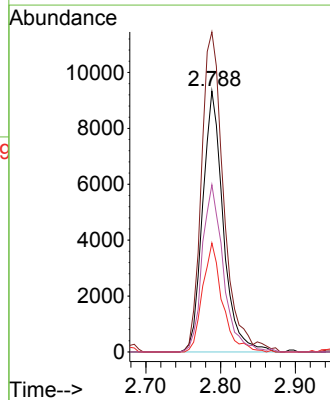
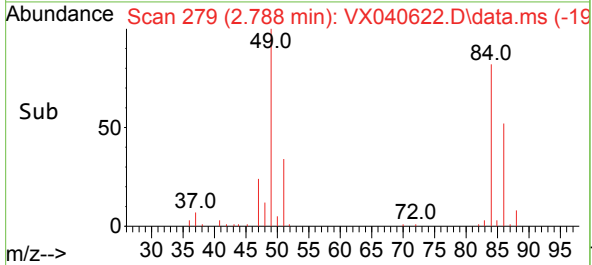
Tgt Ion: 41 Resp: 27838
 Ion Ratio Lower Upper
 41 100
 39 83.2 36.5 109.5
 76 35.2 19.7 59.0

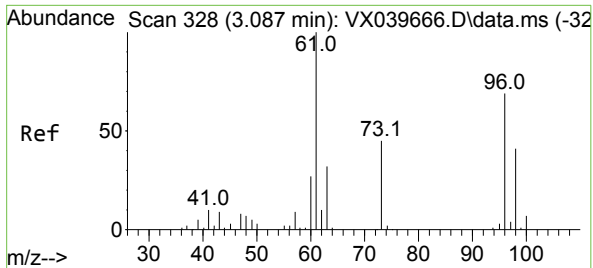


#18
 Methylene Chloride
 Concen: 18.162 ug/l
 RT: 2.788 min Scan# 279
 Delta R.T. 0.000 min
 Lab File: VX040622.D
 Acq: 08 Mar 2024 11:06



Tgt Ion: 84 Resp: 17900
 Ion Ratio Lower Upper
 84 100
 49 122.6 103.8 155.8
 51 41.7 31.8 47.6
 86 64.1 50.8 76.2

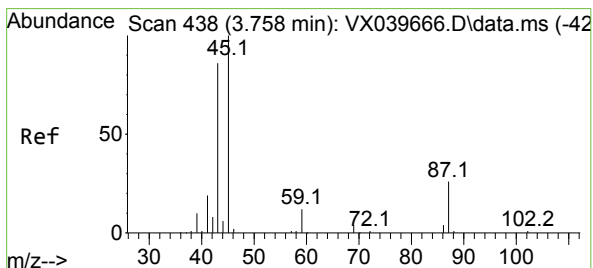
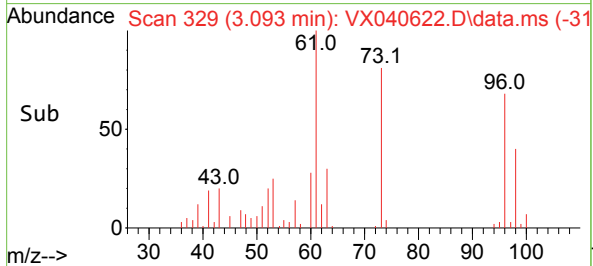
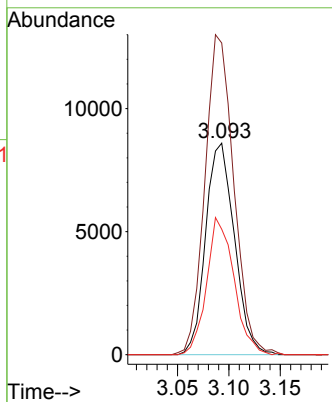
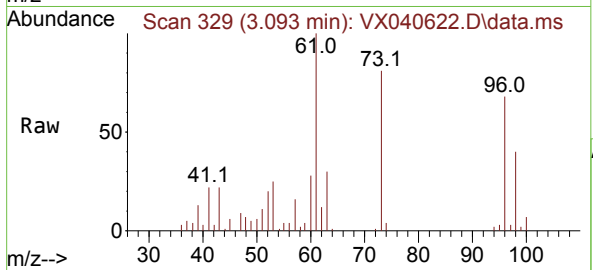




#19
 trans-1,2-Dichloroethene
 Concen: 17.773 ug/l
 RT: 3.093 min Scan# 31
 Delta R.T. 0.006 min
 Lab File: VX040622.D
 Acq: 08 Mar 2024 11:06

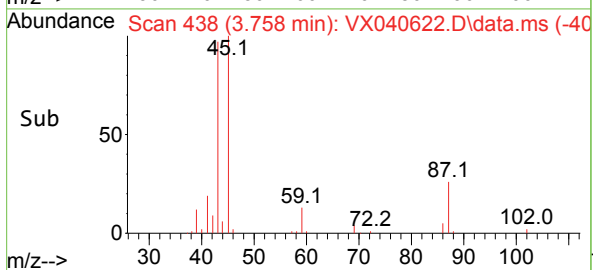
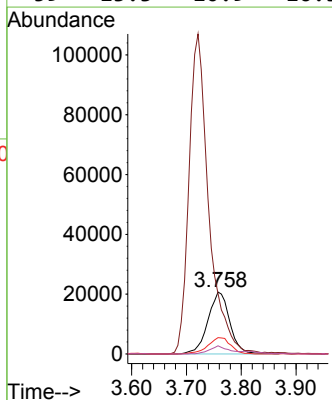
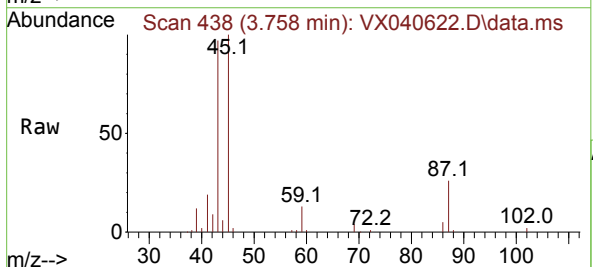
Instrument : MSVOA_X
 ClientSampleId : VX0309WBSD01

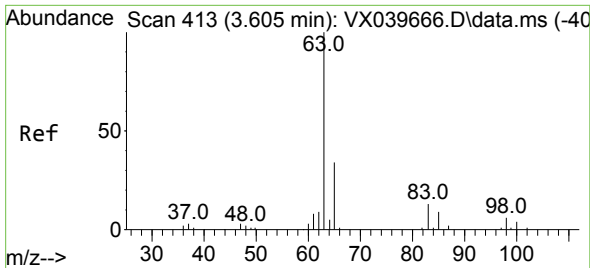
Tgt Ion	Resp	Lower	Upper
96	16750	100	
61	146.5	117.9	176.9
98	59.3	51.0	76.6



#20
 Diisopropyl ether
 Concen: 17.935 ug/l
 RT: 3.758 min Scan# 438
 Delta R.T. -0.000 min
 Lab File: VX040622.D
 Acq: 08 Mar 2024 11:06

Tgt Ion	Resp	Lower	Upper
45	57141	100	
43	94.8	67.7	101.5
87	26.4	21.5	32.3
59	13.3	10.9	16.3



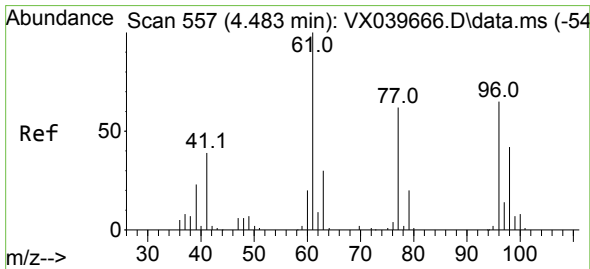
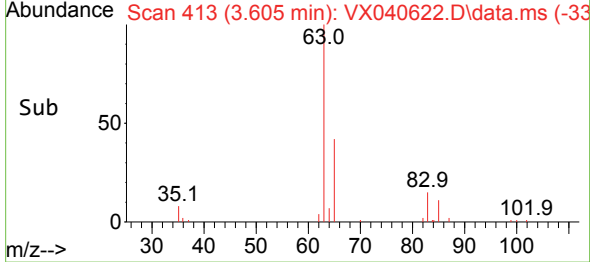
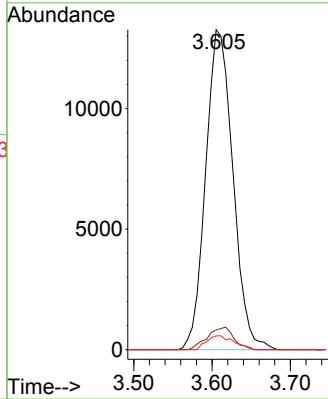
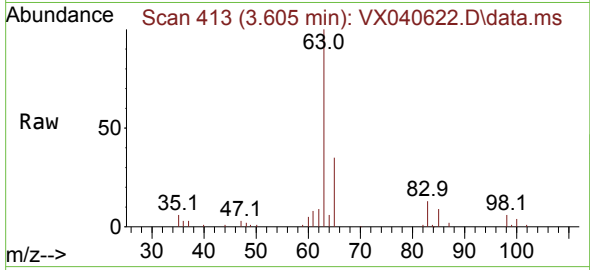


#21
 1,1-Dichloroethane
 Concen: 17.526 ug/l
 RT: 3.605 min Scan# 413
 Delta R.T. 0.000 min
 Lab File: VX040622.D
 Acq: 08 Mar 2024 11:06

Instrument : MSVOA_X
 ClientSampleId : VX0309WBSD01

Tgt Ion: 63 Resp: 32131

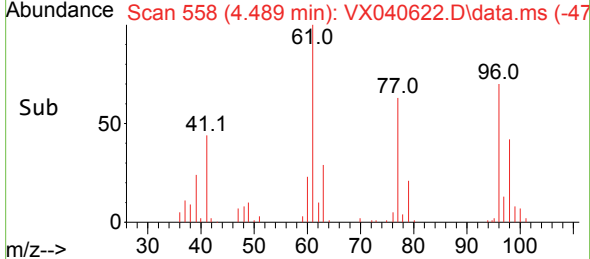
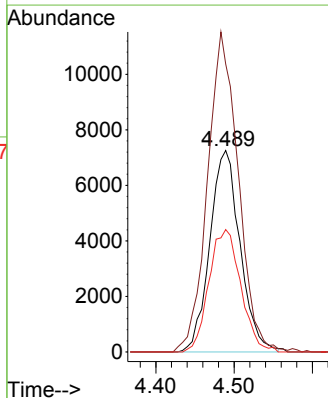
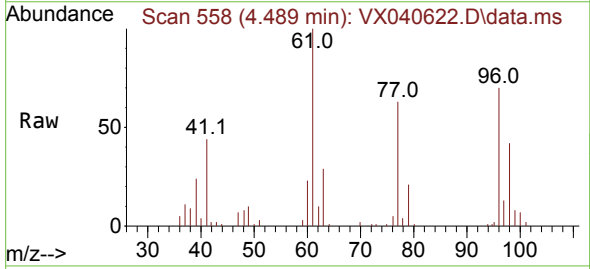
Ion	Ratio	Lower	Upper
63	100		
98	6.1	2.9	8.8
100	4.3	2.0	5.8

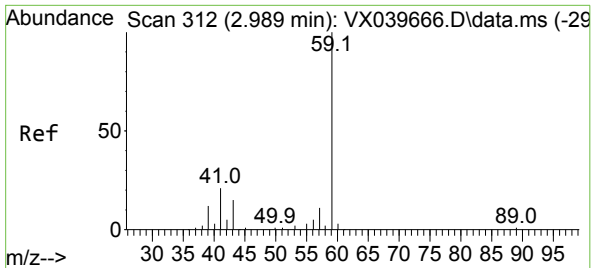


#22
 cis-1,2-Dichloroethene
 Concen: 17.783 ug/l
 RT: 4.489 min Scan# 558
 Delta R.T. 0.006 min
 Lab File: VX040622.D
 Acq: 08 Mar 2024 11:06

Tgt Ion: 96 Resp: 19463

Ion	Ratio	Lower	Upper
96	100		
61	161.2	119.8	179.6
98	63.6	50.9	76.3

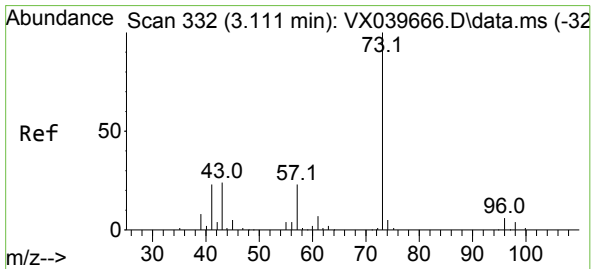
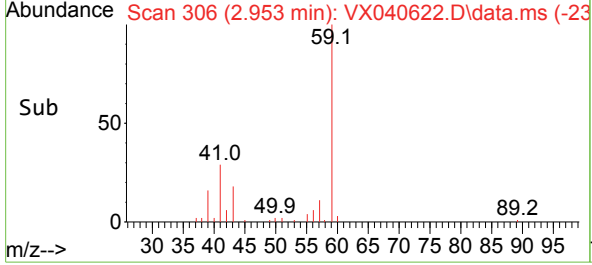
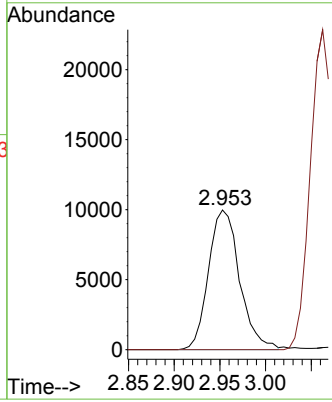
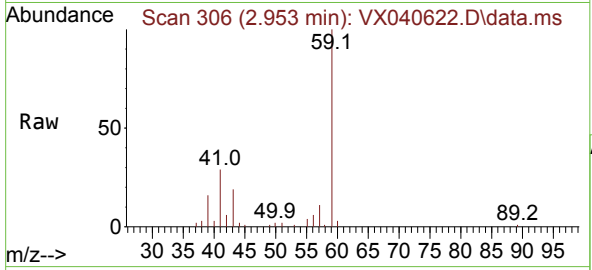




#23
 tert-Butyl Alcohol
 Concen: 89.252 ug/l
 RT: 2.953 min Scan# 306
 Delta R.T. -0.036 min
 Lab File: VX040622.D
 Acq: 08 Mar 2024 11:06

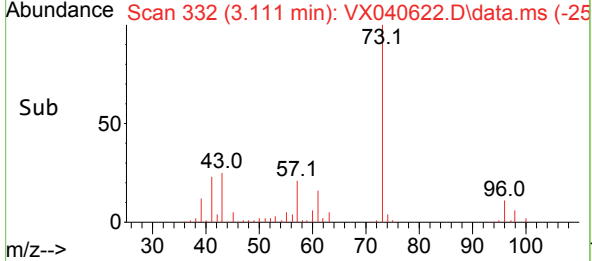
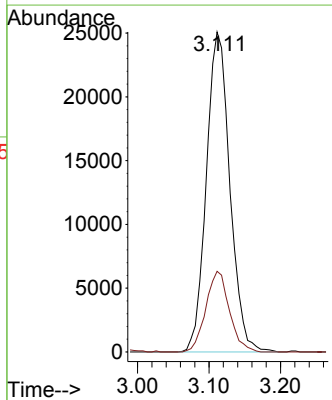
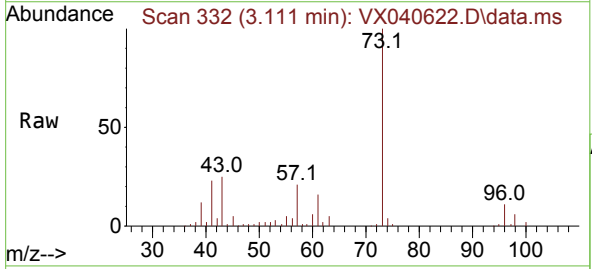
Instrument : MSVOA_X
 ClientSampleId : VX0309WBSD01

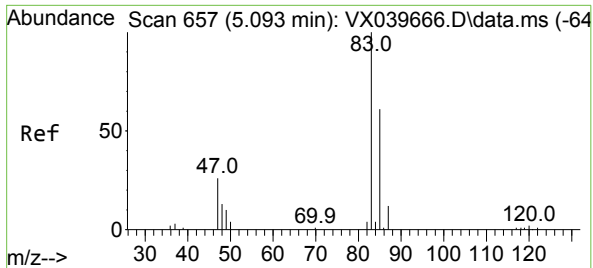
Tgt Ion: 59 Resp: 23612
 Ion Ratio Lower Upper
 59 100
 52 0.0 0.0 0.0



#24
 Methyl tert-Butyl Ether
 Concen: 18.009 ug/l
 RT: 3.111 min Scan# 332
 Delta R.T. 0.000 min
 Lab File: VX040622.D
 Acq: 08 Mar 2024 11:06

Tgt Ion: 73 Resp: 57374
 Ion Ratio Lower Upper
 73 100
 43 25.2 17.0 25.6

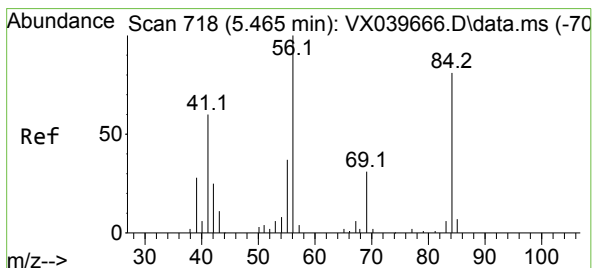
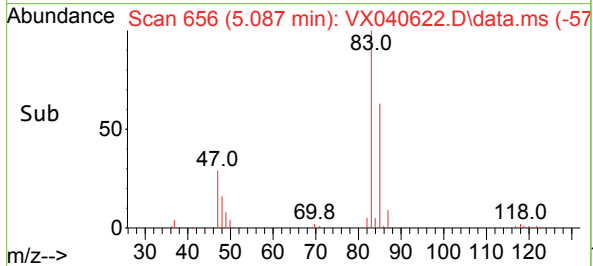
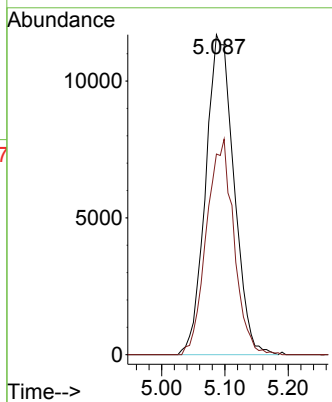
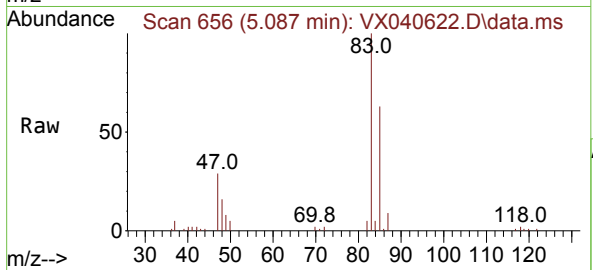




#25
 Chloroform
 Concen: 18.099 ug/l
 RT: 5.087 min Scan# 611
 Delta R.T. -0.006 min
 Lab File: VX040622.D
 Acq: 08 Mar 2024 11:06

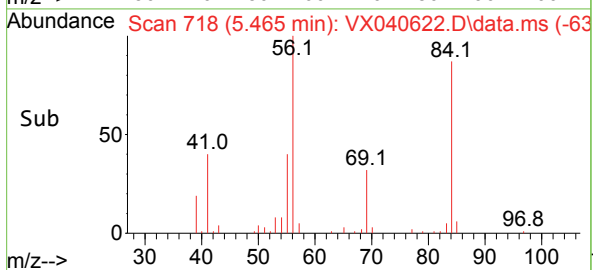
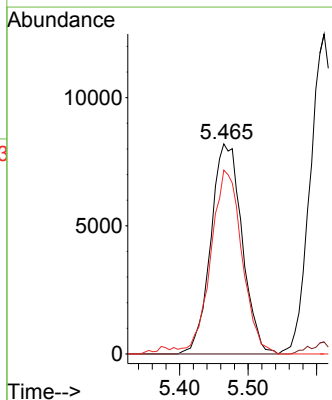
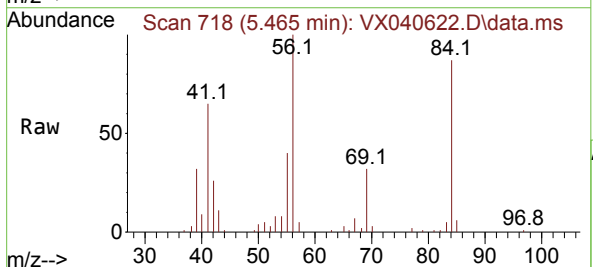
Instrument : MSVOA_X
 ClientSampleId : VX0309WBSD01

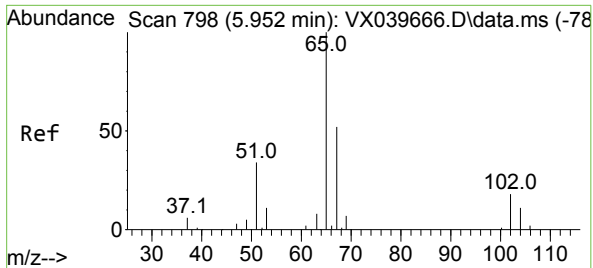
Tgt Ion: 83 Resp: 36317
 Ion Ratio Lower Upper
 83 100
 85 62.7 54.6 81.8



#26
 Cyclohexane
 Concen: 17.540 ug/l
 RT: 5.465 min Scan# 718
 Delta R.T. -0.000 min
 Lab File: VX040622.D
 Acq: 08 Mar 2024 11:06

Tgt Ion: 56 Resp: 25952
 Ion Ratio Lower Upper
 56 100
 89 1.2 0.0 0.0#
 84 87.3 67.2 100.8

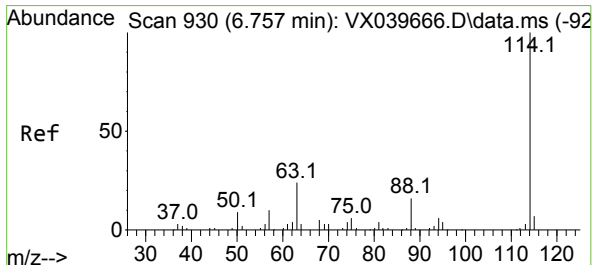
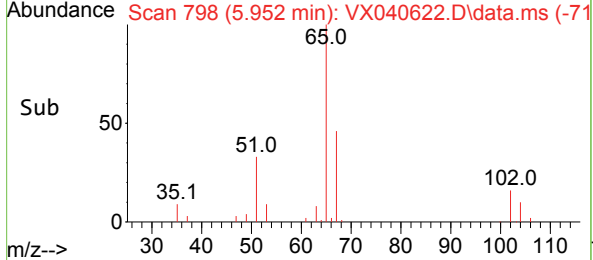
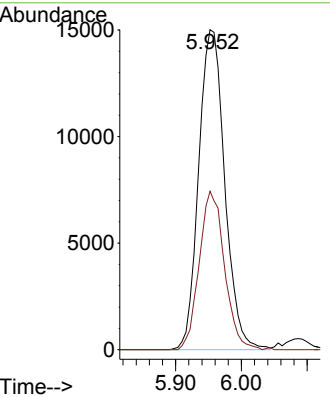
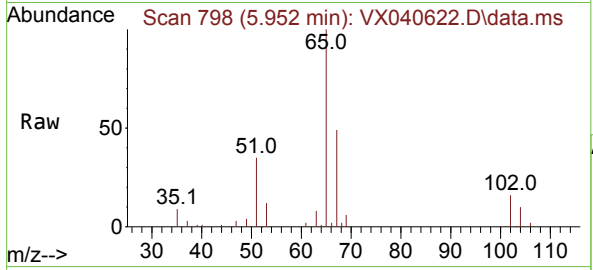




#27
 1,2-Dichloroethane-d4
 Concen: 28.643 ug/l
 RT: 5.952 min Scan# 798
 Delta R.T. 0.000 min
 Lab File: VX040622.D
 Acq: 08 Mar 2024 11:06

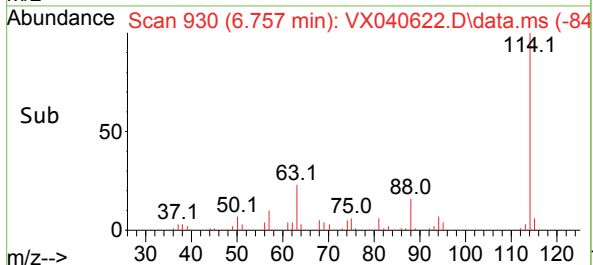
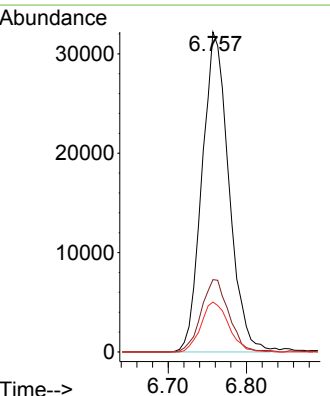
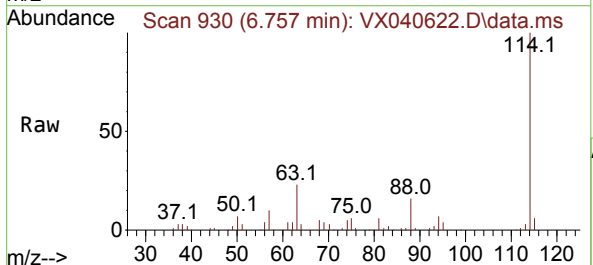
Instrument : MSVOA_X
 ClientSampleId : VX0309WBSD01

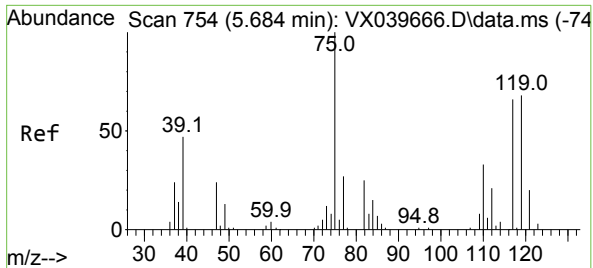
Tgt Ion: 65 Resp: 41411
 Ion Ratio Lower Upper
 65 100
 67 47.8 42.5 63.7



#28
 1,4-Difluorobenzene
 Concen: 30.000 ug/l
 RT: 6.757 min Scan# 930
 Delta R.T. -0.000 min
 Lab File: VX040622.D
 Acq: 08 Mar 2024 11:06

Tgt Ion: 114 Resp: 76569
 Ion Ratio Lower Upper
 114 100
 63 23.2 17.0 25.4
 88 16.0 12.7 19.1



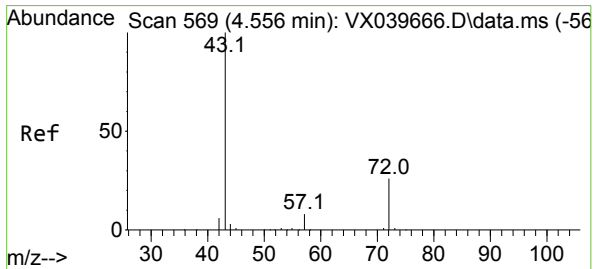
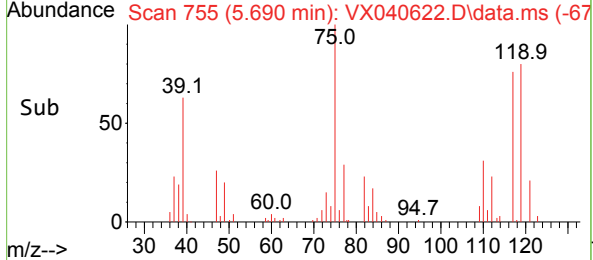
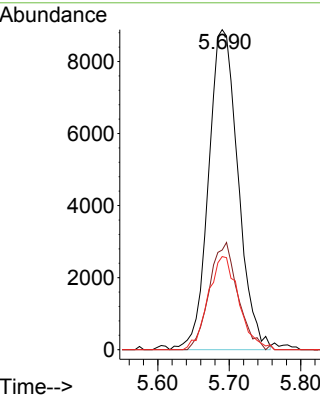
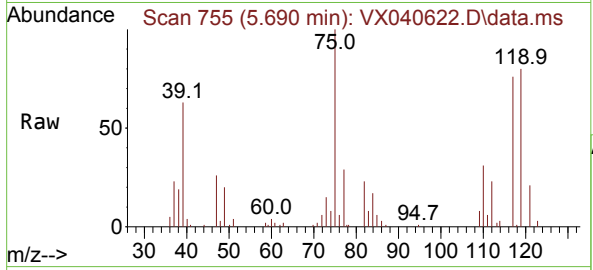


#29
 1,1-Dichloropropene
 Concen: 19.210 ug/l
 RT: 5.690 min Scan# 75
 Delta R.T. 0.006 min
 Lab File: VX040622.D
 Acq: 08 Mar 2024 11:06

Instrument : MSVOA_X
 ClientSampleId : VX0309WBSD01

Tgt Ion: 75 Resp: 25460

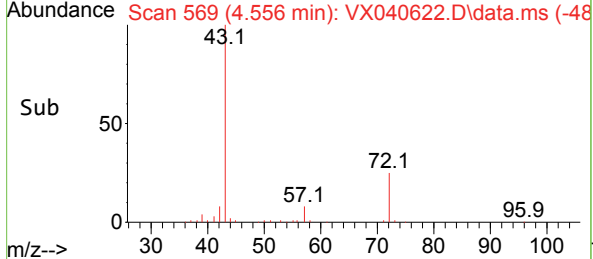
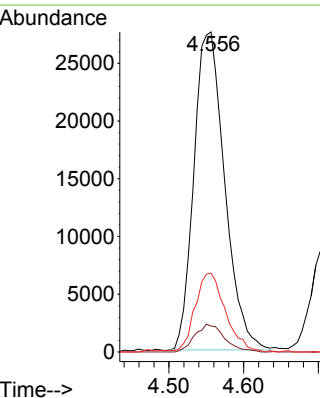
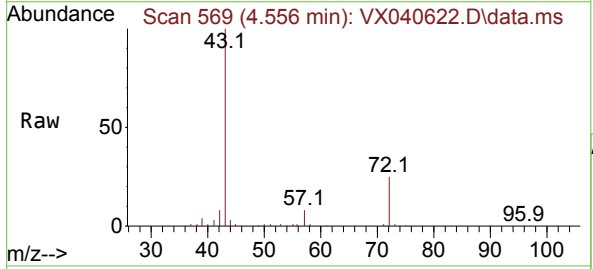
Ion	Ratio	Lower	Upper
75	100		
110	32.2	0.0	71.2
77	30.2	0.0	62.6

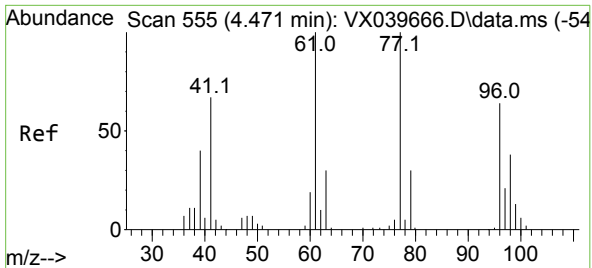


#30
 2-Butanone
 Concen: 97.435 ug/l
 RT: 4.556 min Scan# 569
 Delta R.T. 0.000 min
 Lab File: VX040622.D
 Acq: 08 Mar 2024 11:06

Tgt Ion: 43 Resp: 78802

Ion	Ratio	Lower	Upper
43	100		
57	8.4	6.6	10.0
72	24.2	20.6	31.0

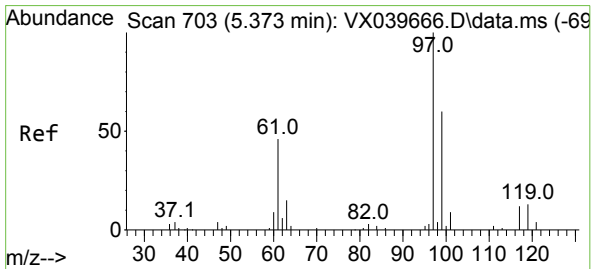
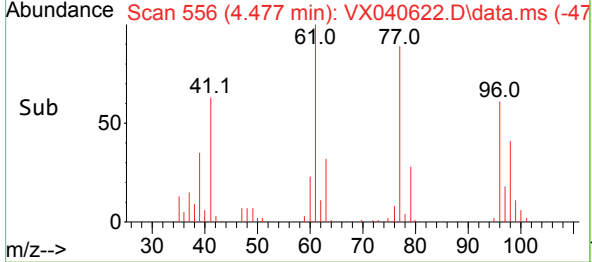
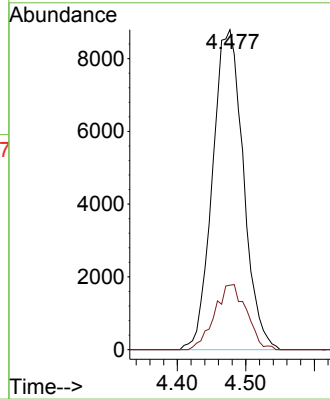
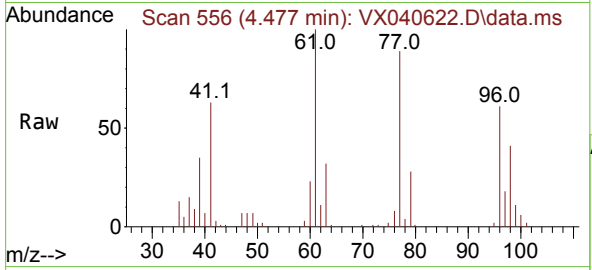




#31
 2,2-Dichloropropane
 Concen: 19.208 ug/l
 RT: 4.477 min Scan# 51
 Delta R.T. 0.006 min
 Lab File: VX040622.D
 Acq: 08 Mar 2024 11:06

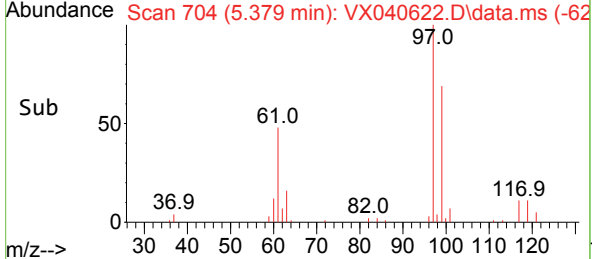
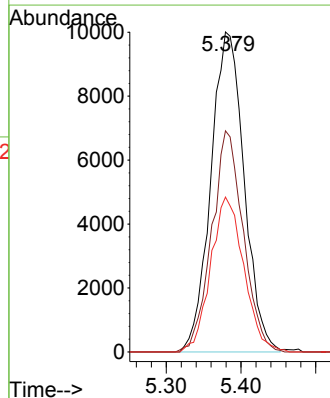
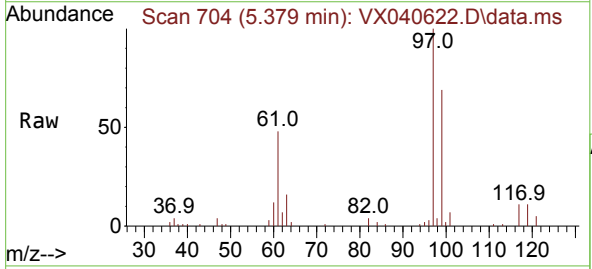
Instrument :
 MSVOA_X
 ClientSampleId :
 VX0309WBSD01

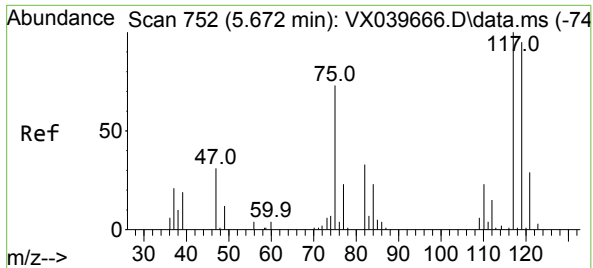
Tgt Ion: 77 Resp: 27476
 Ion Ratio Lower Upper
 77 100
 97 20.9 18.2 27.4



#32
 1,1,1-Trichloroethane
 Concen: 18.552 ug/l
 RT: 5.379 min Scan# 704
 Delta R.T. 0.006 min
 Lab File: VX040622.D
 Acq: 08 Mar 2024 11:06

Tgt Ion: 97 Resp: 30983
 Ion Ratio Lower Upper
 97 100
 99 65.5 52.6 79.0
 61 48.2 36.9 55.3



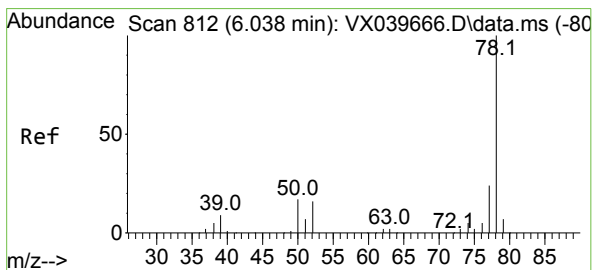
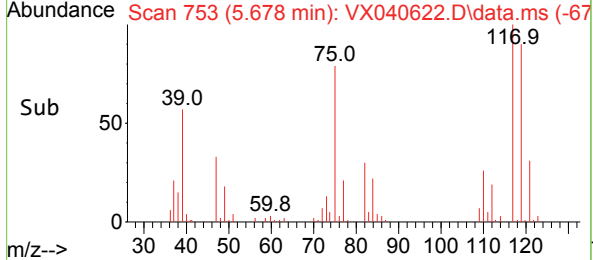
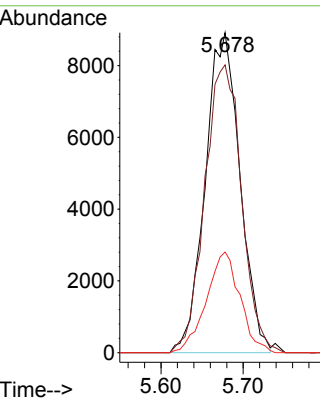
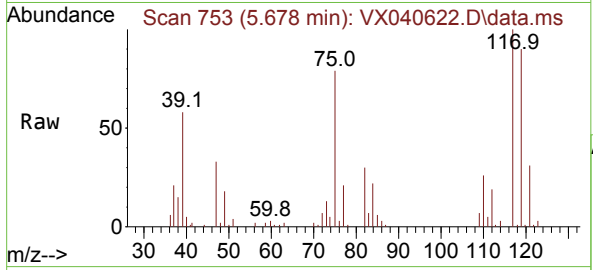


#33
 Carbon Tetrachloride
 Concen: 18.642 ug/l
 RT: 5.678 min Scan# 753
 Delta R.T. 0.006 min
 Lab File: VX040622.D
 Acq: 08 Mar 2024 11:06

Instrument : MSVOA_X
 ClientSampleId : VX0309WBSD01

Tgt Ion:117 Resp: 26194

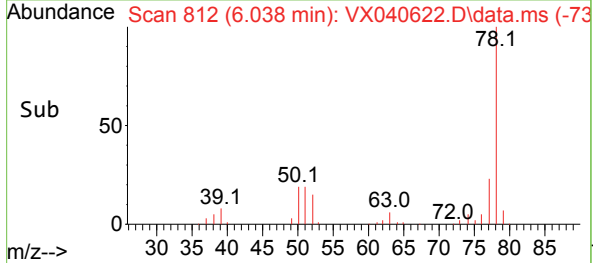
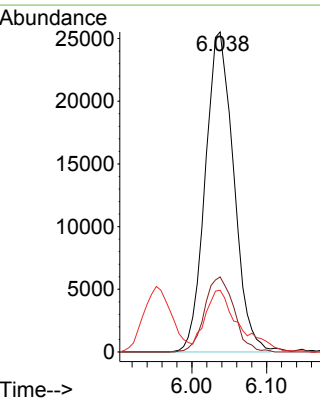
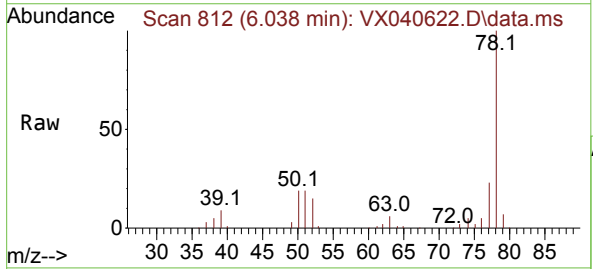
Ion	Ratio	Lower	Upper
117	100		
119	90.0	78.2	117.4
121	31.4	24.7	37.1

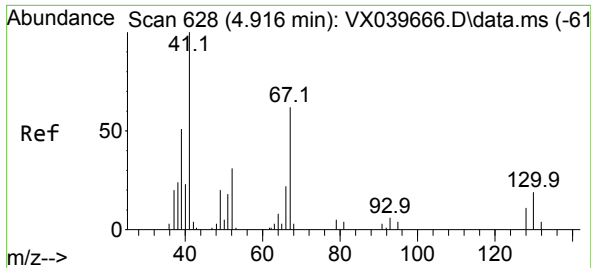


#34
 Benzene
 Concen: 18.854 ug/l
 RT: 6.038 min Scan# 812
 Delta R.T. -0.000 min
 Lab File: VX040622.D
 Acq: 08 Mar 2024 11:06

Tgt Ion: 78 Resp: 67456

Ion	Ratio	Lower	Upper
78	100		
77	23.5	19.3	28.9
51	16.8	14.4	21.6





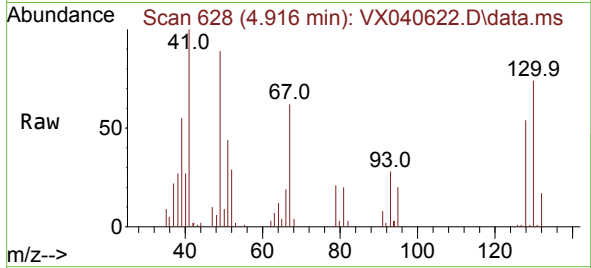
#35
 Methacrylonitrile
 Concen: 18.933 ug/l
 RT: 4.916 min Scan# 61
 Delta R.T. -0.000 min
 Lab File: VX040622.D
 Acq: 08 Mar 2024 11:06

Instrument :

MSVOA_X

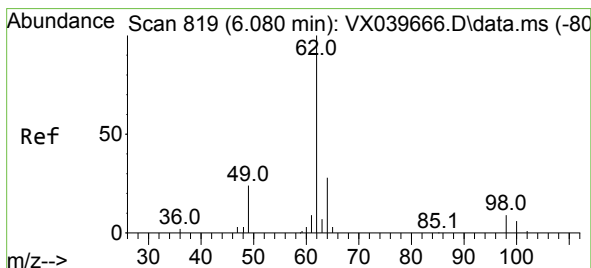
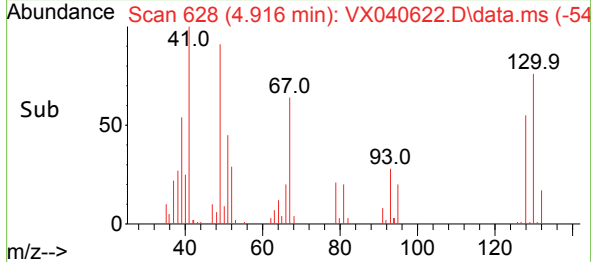
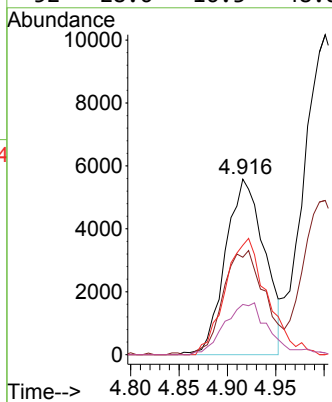
ClientSampleId :

VX0309WBSD01



Tgt Ion: 41 Resp: 15719

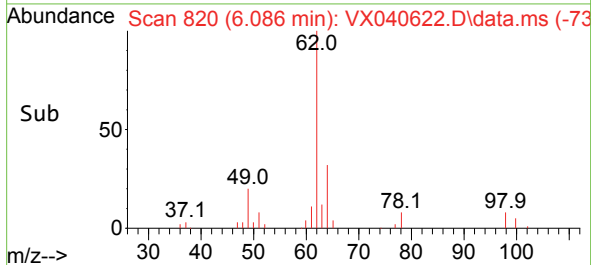
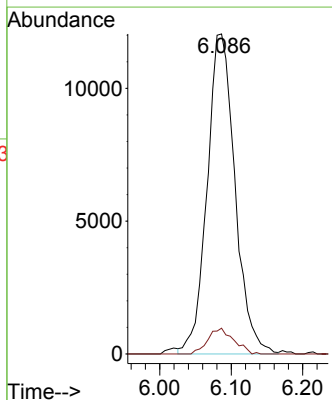
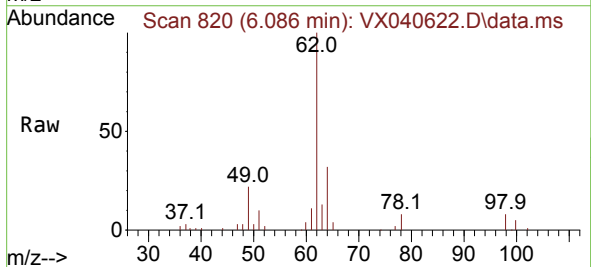
Ion	Ratio	Lower	Upper
41	100		
39	54.5	28.2	84.7
67	62.4	34.5	103.5
52	28.6	16.3	48.8

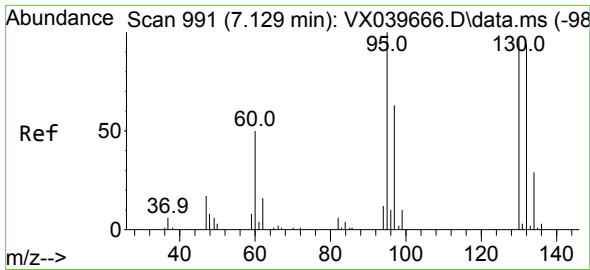


#36
 1,2-Dichloroethane
 Concen: 19.738 ug/l
 RT: 6.086 min Scan# 820
 Delta R.T. 0.006 min
 Lab File: VX040622.D
 Acq: 08 Mar 2024 11:06

Tgt Ion: 62 Resp: 32651

Ion	Ratio	Lower	Upper
62	100		
98	7.4	7.0	10.4

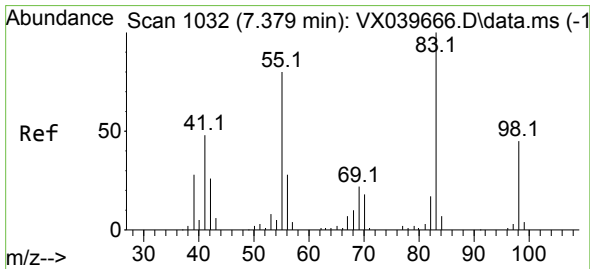
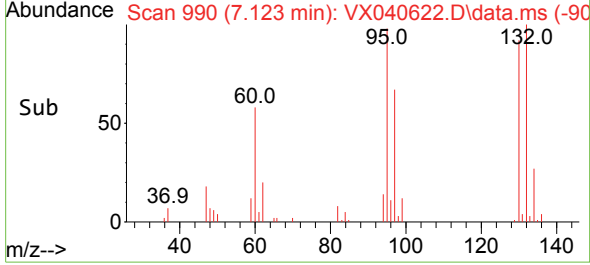
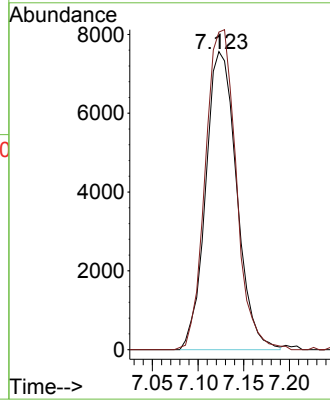
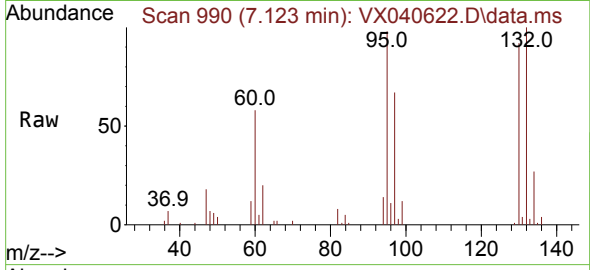




#37
 Trichloroethene
 Concen: 18.562 ug/l
 RT: 7.123 min Scan# 991
 Delta R.T. -0.006 min
 Lab File: VX040622.D
 Acq: 08 Mar 2024 11:06

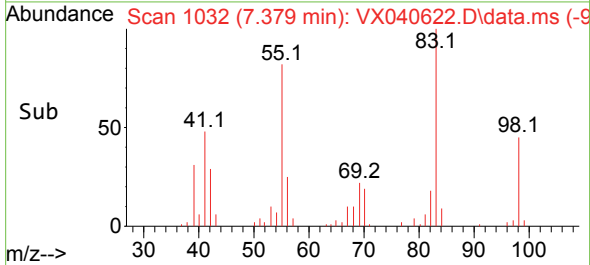
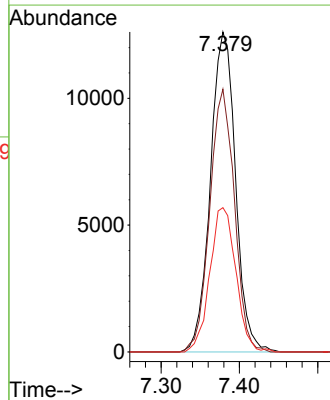
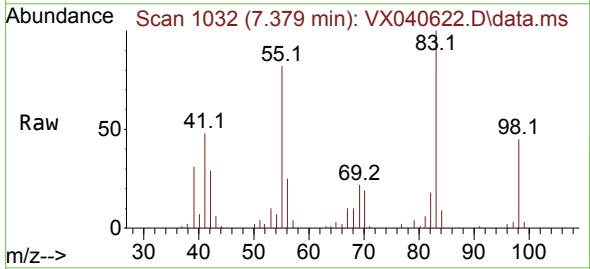
Instrument : MSVOA_X
 ClientSampleId : VX0309WBSD01

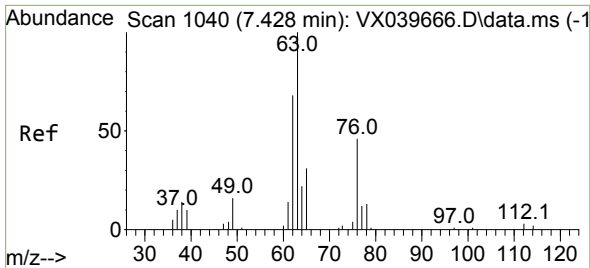
Tgt Ion:130 Resp: 17847
 Ion Ratio Lower Upper
 130 100
 95 105.8 85.8 128.8



#38
 Methylcyclohexane
 Concen: 19.721 ug/l
 RT: 7.379 min Scan# 1032
 Delta R.T. -0.000 min
 Lab File: VX040622.D
 Acq: 08 Mar 2024 11:06

Tgt Ion: 83 Resp: 28145
 Ion Ratio Lower Upper
 83 100
 55 80.6 38.6 116.0
 98 46.5 22.3 66.8

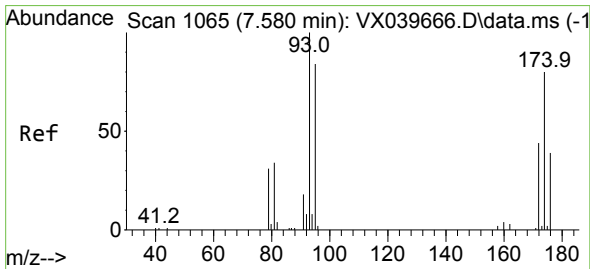
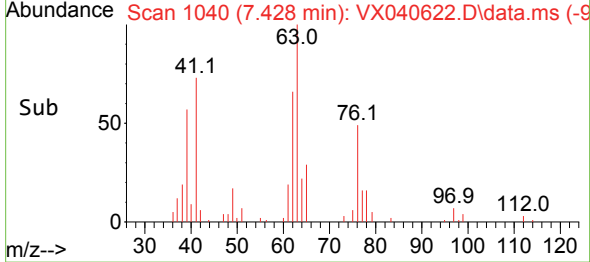
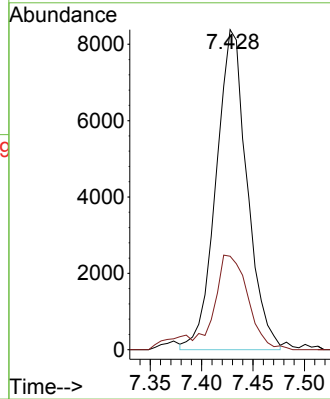
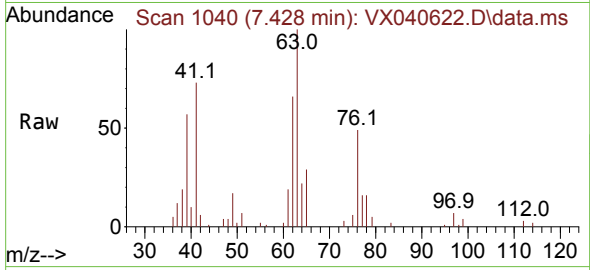




#39
 1,2-Dichloropropane
 Concen: 19.311 ug/l
 RT: 7.428 min Scan# 1040
 Delta R.T. -0.000 min
 Lab File: VX040622.D
 Acq: 08 Mar 2024 11:06

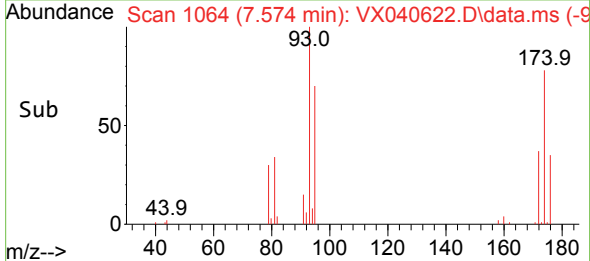
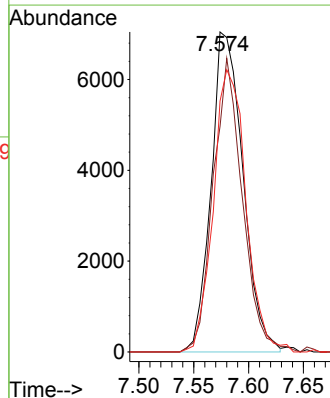
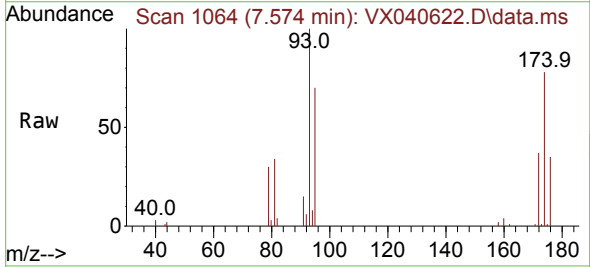
Instrument : MSVOA_X
 ClientSampleId : VX0309WBSD01

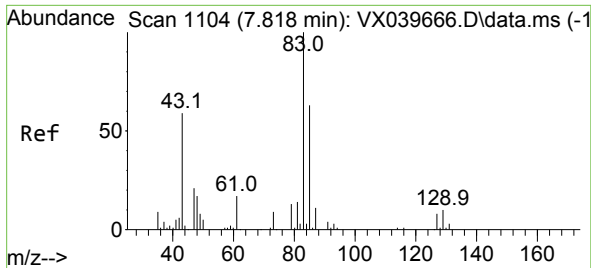
Tgt Ion: 63 Resp: 17592
 Ion Ratio Lower Upper
 63 100
 65 28.4 24.6 37.0



#40
 Dibromomethane
 Concen: 19.878 ug/l
 RT: 7.574 min Scan# 1064
 Delta R.T. -0.006 min
 Lab File: VX040622.D
 Acq: 08 Mar 2024 11:06

Tgt Ion: 93 Resp: 14226
 Ion Ratio Lower Upper
 93 100
 95 84.4 0.0 163.4
 174 89.8 0.0 166.4

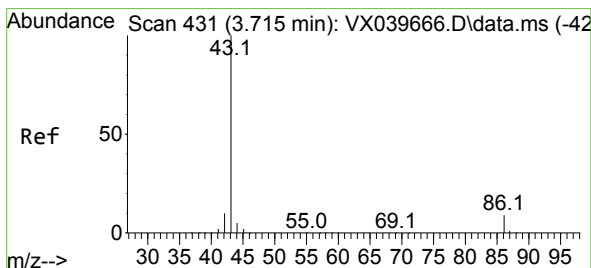
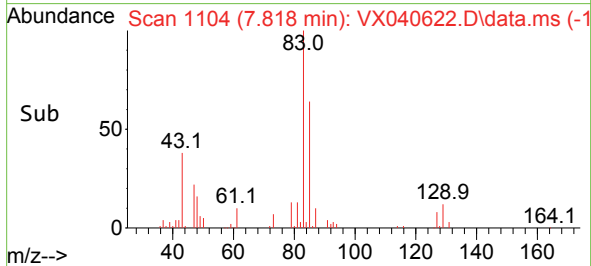
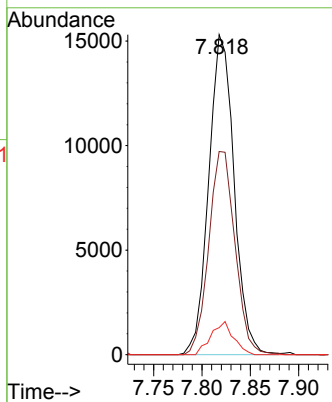
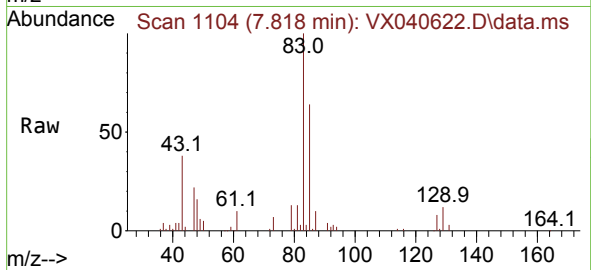




#41
 Bromodichloromethane
 Concen: 19.623 ug/l
 RT: 7.818 min Scan# 1104
 Delta R.T. -0.000 min
 Lab File: VX040622.D
 Acq: 08 Mar 2024 11:06

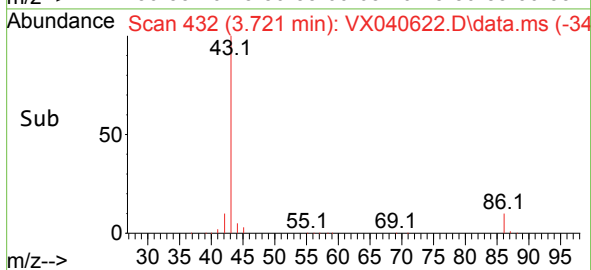
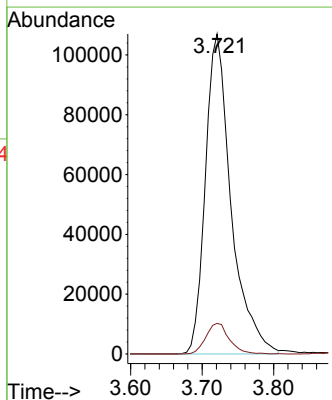
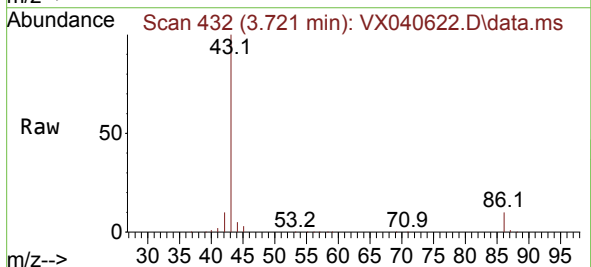
Instrument : MSVOA_X
 ClientSampleId : VX0309WBSD01

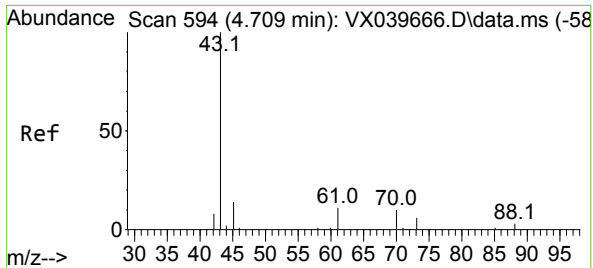
Tgt Ion	Resp	Lower	Upper
83	27937	100	100
85	63.5	50.8	76.2
127	8.4	5.9	8.9



#42
 Vinyl Acetate
 Concen: 96.148 ug/l
 RT: 3.721 min Scan# 432
 Delta R.T. 0.006 min
 Lab File: VX040622.D
 Acq: 08 Mar 2024 11:06

Tgt Ion	Resp	Lower	Upper
43	267731	100	100
86	8.7	6.7	10.1

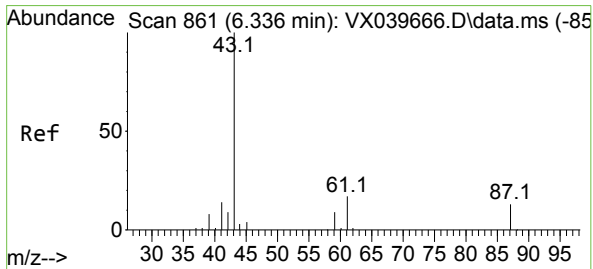
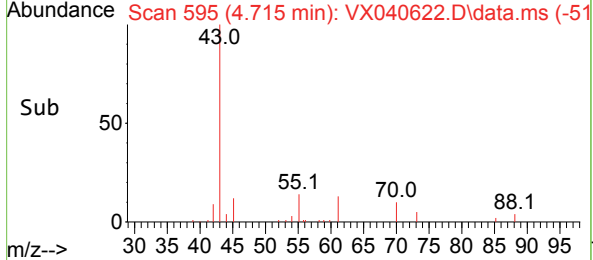
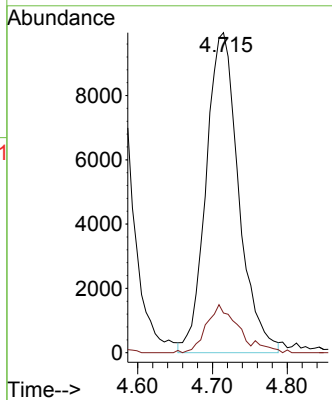
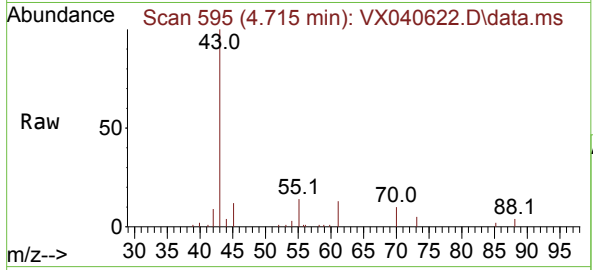




#43
 Ethyl Acetate
 Concen: 19.800 ug/l
 RT: 4.715 min Scan# 595
 Delta R.T. 0.006 min
 Lab File: VX040622.D
 Acq: 08 Mar 2024 11:06

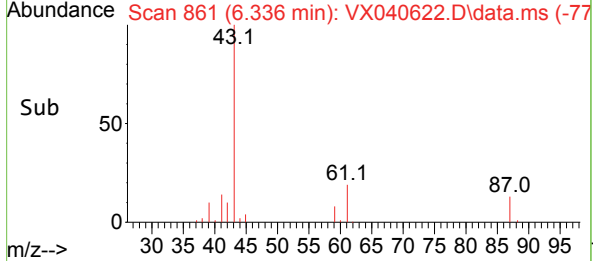
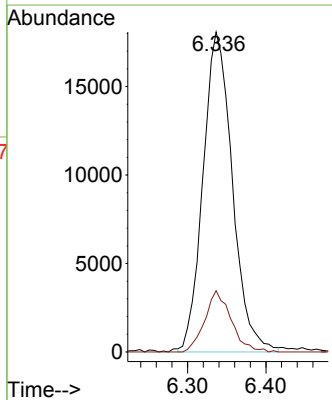
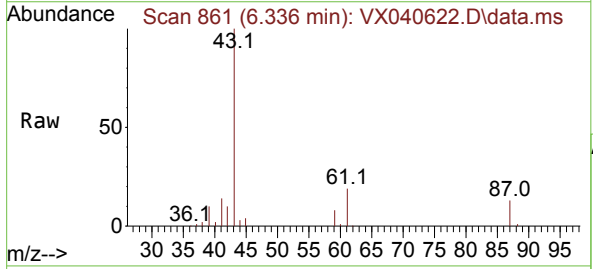
Instrument : MSVOA_X
 ClientSampleId : VX0309WBSD01

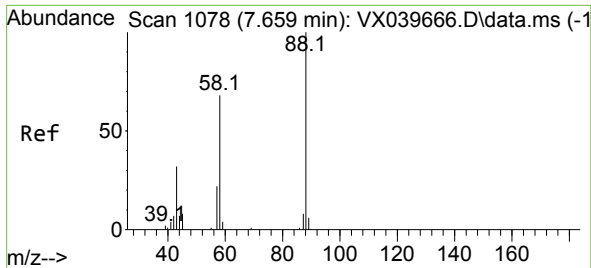
Tgt Ion: 43 Resp: 30158
 Ion Ratio Lower Upper
 43 100
 45 13.4 11.8 17.8



#44
 Isopropyl Acetate
 Concen: 19.367 ug/l
 RT: 6.336 min Scan# 861
 Delta R.T. 0.000 min
 Lab File: VX040622.D
 Acq: 08 Mar 2024 11:06

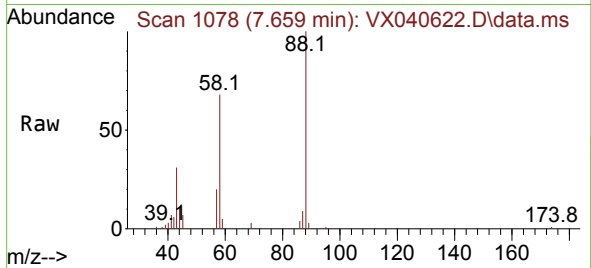
Tgt Ion: 43 Resp: 47087
 Ion Ratio Lower Upper
 43 100
 61 17.0 15.6 23.4



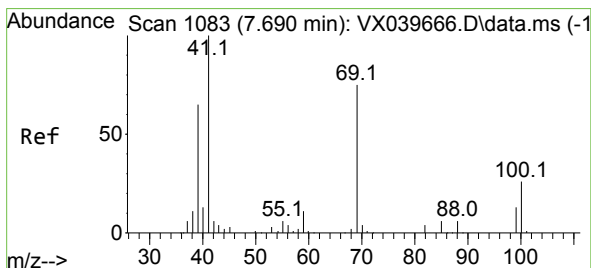
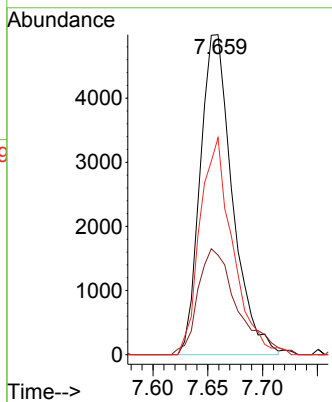
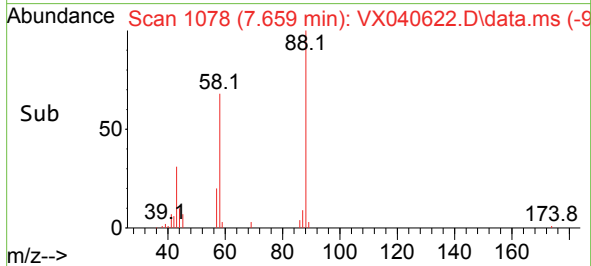


#45
 1,4-Dioxane
 Concen: 408.007 ug/l
 RT: 7.659 min Scan# 1078
 Delta R.T. 0.000 min
 Lab File: VX040622.D
 Acq: 08 Mar 2024 11:06

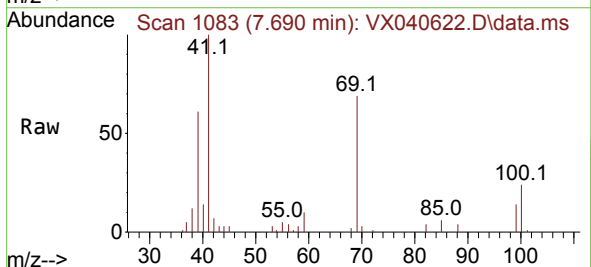
Instrument : MSVOA_X
 ClientSampleId : VX0309WBSD01



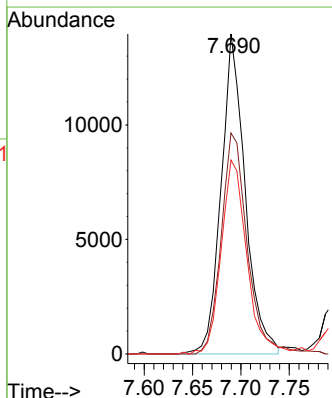
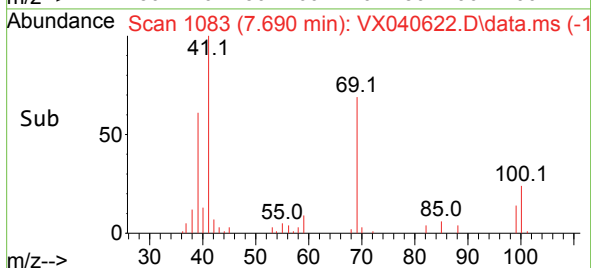
Tgt Ion: 88 Resp: 10197
 Ion Ratio Lower Upper
 88 100
 43 40.5 28.1 42.1
 58 68.8 57.7 86.5

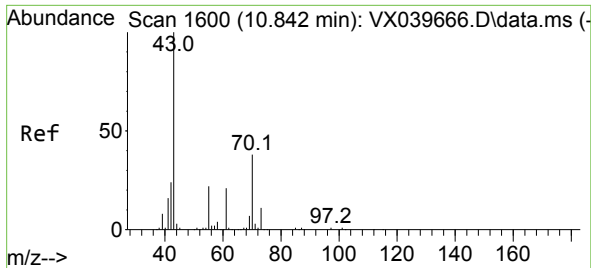


#46
 Methyl methacrylate
 Concen: 19.955 ug/l
 RT: 7.690 min Scan# 1083
 Delta R.T. -0.000 min
 Lab File: VX040622.D
 Acq: 08 Mar 2024 11:06



Tgt Ion: 41 Resp: 24098
 Ion Ratio Lower Upper
 41 100
 69 69.1 39.6 118.8
 39 60.6 30.1 90.3

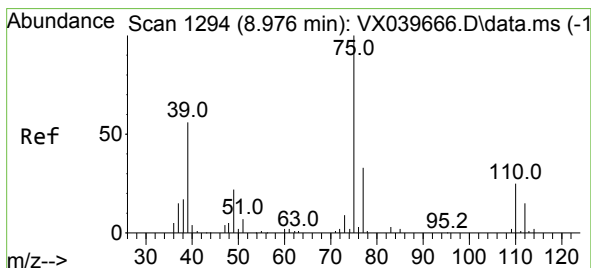
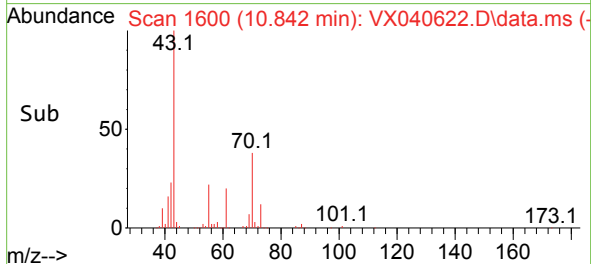
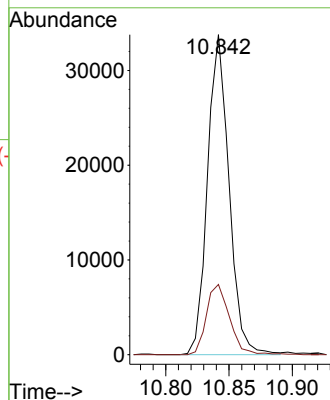
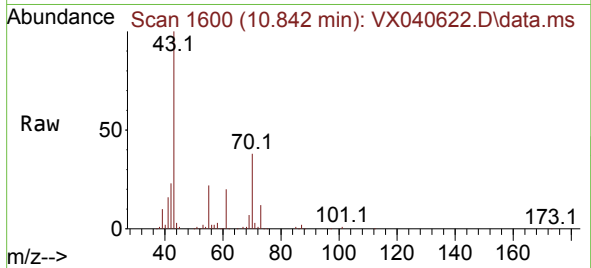




#47
 n-amy1 Acetate
 Concen: 19.071 ug/l
 RT: 10.842 min Scan# 1600
 Delta R.T. -0.000 min
 Lab File: VX040622.D
 Acq: 08 Mar 2024 11:06

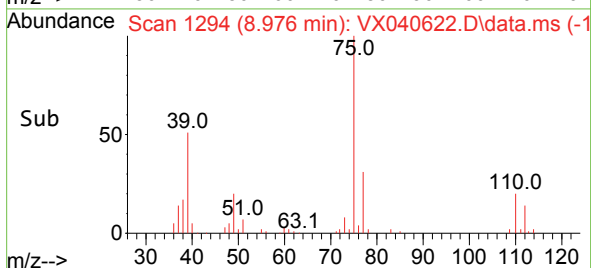
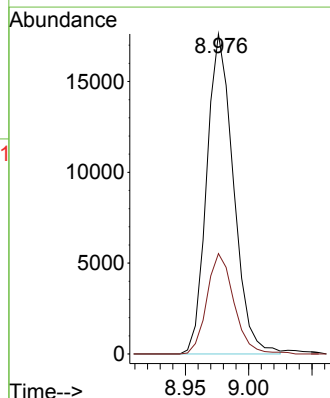
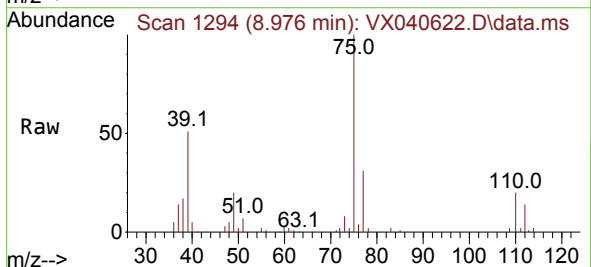
Instrument : MSVOA_X
 ClientSampleId : VX0309WBSD01

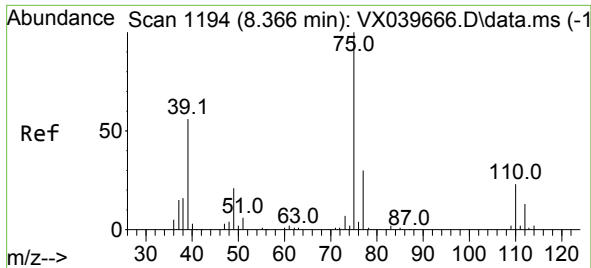
Tgt Ion: 43 Resp: 39962
 Ion Ratio Lower Upper
 43 100
 55 23.7 18.2 27.2



#48
 t-1,3-Dichloropropene
 Concen: 17.188 ug/l
 RT: 8.976 min Scan# 1294
 Delta R.T. 0.000 min
 Lab File: VX040622.D
 Acq: 08 Mar 2024 11:06

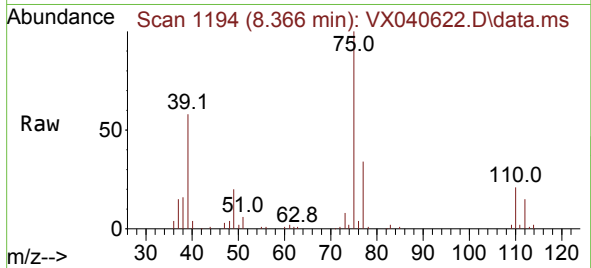
Tgt Ion: 75 Resp: 25865
 Ion Ratio Lower Upper
 75 100
 77 31.3 26.8 40.2



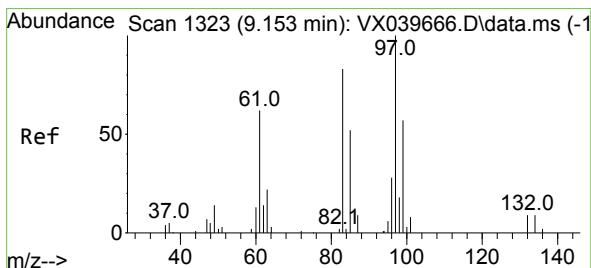
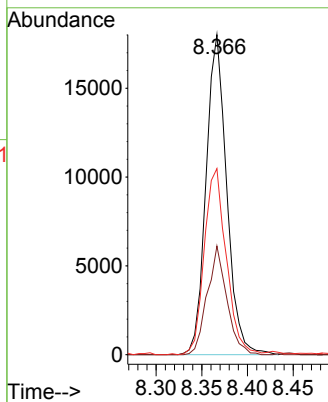
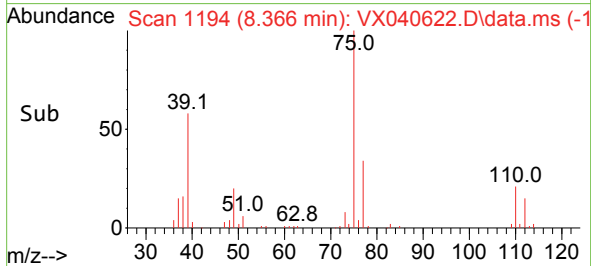


#49
 cis-1,3-Dichloropropene
 Concen: 18.450 ug/l
 RT: 8.366 min Scan# 1194
 Delta R.T. 0.000 min
 Lab File: VX040622.D
 Acq: 08 Mar 2024 11:06

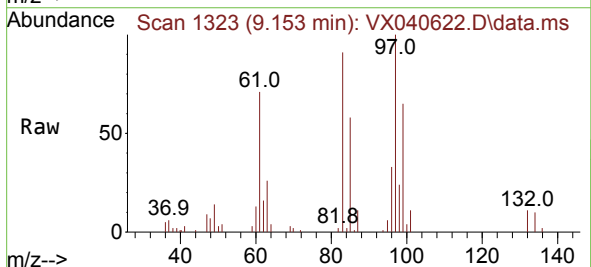
Instrument : MSVOA_X
 ClientSampleId : VX0309WBSD01



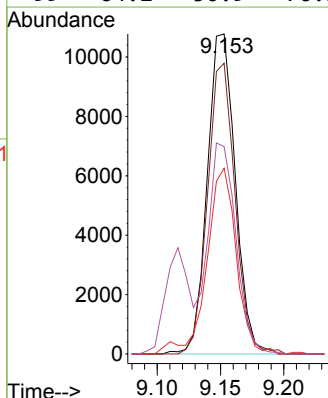
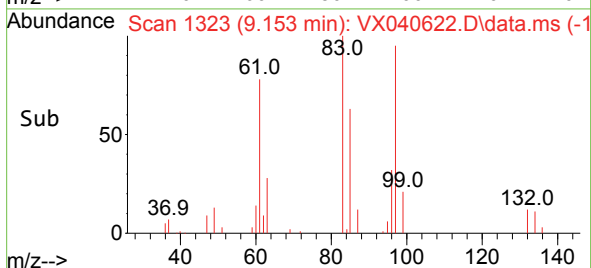
Tgt Ion: 75 Resp: 28282
 Ion Ratio Lower Upper
 75 100
 77 33.9 24.4 36.6
 39 58.2 40.6 60.8

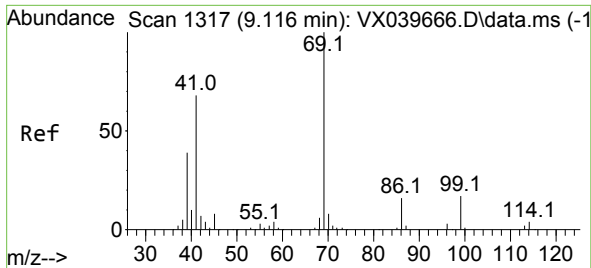


#50
 1,1,2-Trichloroethane
 Concen: 17.431 ug/l
 RT: 9.153 min Scan# 1323
 Delta R.T. -0.000 min
 Lab File: VX040622.D
 Acq: 08 Mar 2024 11:06



Tgt Ion: 97 Resp: 16570
 Ion Ratio Lower Upper
 97 100
 83 90.9 69.0 103.6
 85 58.1 46.3 69.5
 99 64.2 50.9 76.3



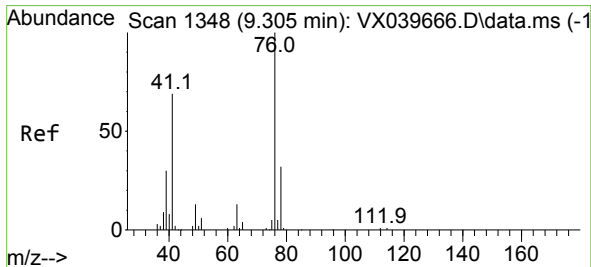
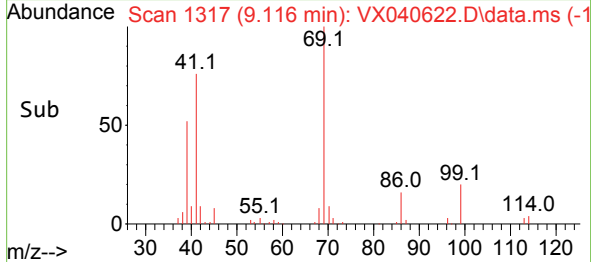
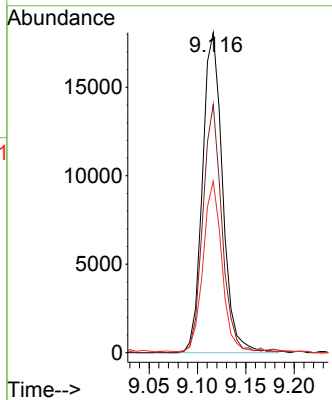
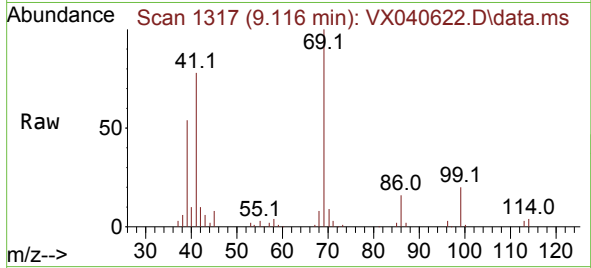


#51
 Ethyl methacrylate
 Concen: 17.526 ug/l
 RT: 9.116 min Scan# 11
 Delta R.T. 0.000 min
 Lab File: VX040622.D
 Acq: 08 Mar 2024 11:06

Instrument : MSVOA_X
 ClientSampleId : VX0309WBSD01

Tgt Ion: 69 Resp: 26230

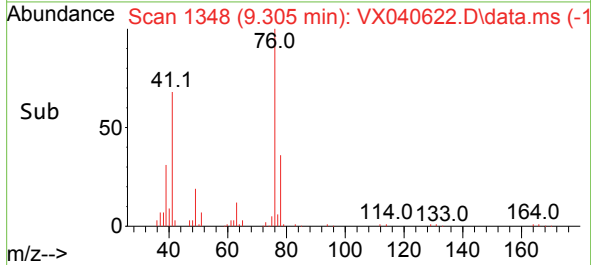
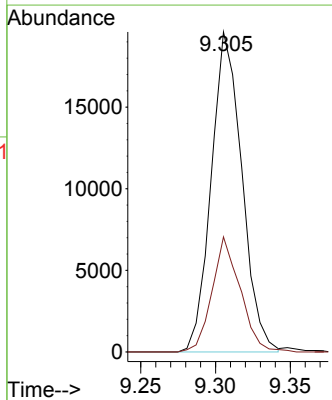
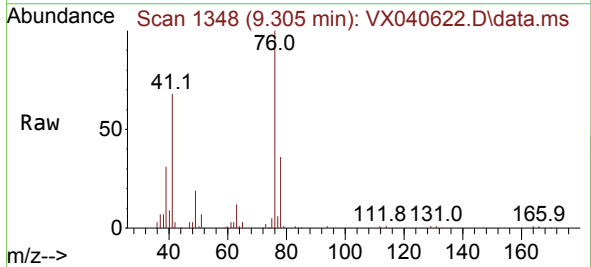
Ion	Ratio	Lower	Upper
69	100		
41	77.6	36.2	108.6
39	53.3	21.1	63.4

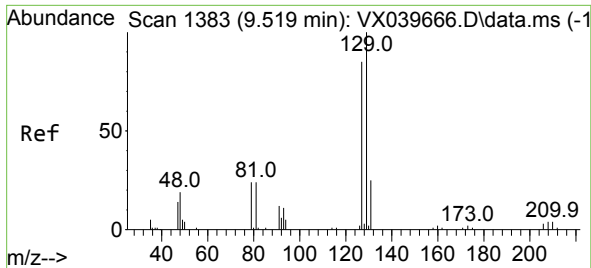


#52
 1,3-Dichloropropane
 Concen: 17.235 ug/l
 RT: 9.305 min Scan# 1348
 Delta R.T. 0.000 min
 Lab File: VX040622.D
 Acq: 08 Mar 2024 11:06

Tgt Ion: 76 Resp: 27957

Ion	Ratio	Lower	Upper
76	100		
78	33.1	0.0	65.0

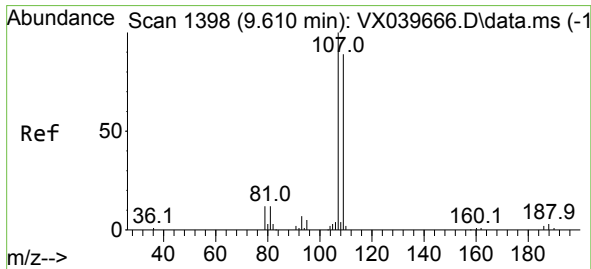
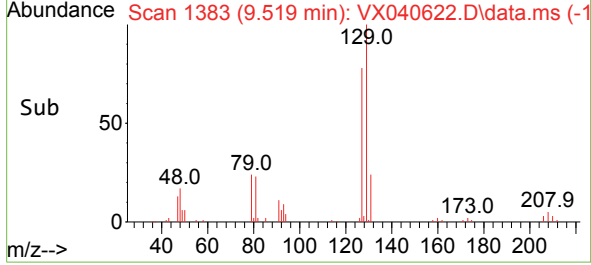
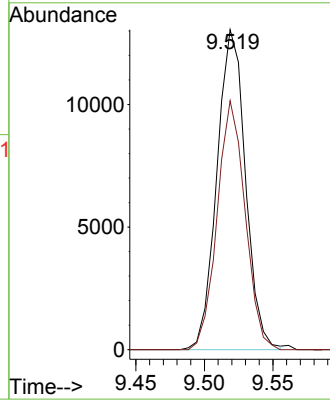
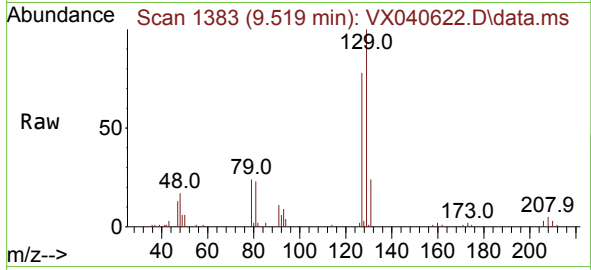




#53
 Dibromochloromethane
 Concen: 17.440 ug/l
 RT: 9.519 min Scan# 1383
 Delta R.T. -0.000 min
 Lab File: VX040622.D
 Acq: 08 Mar 2024 11:06

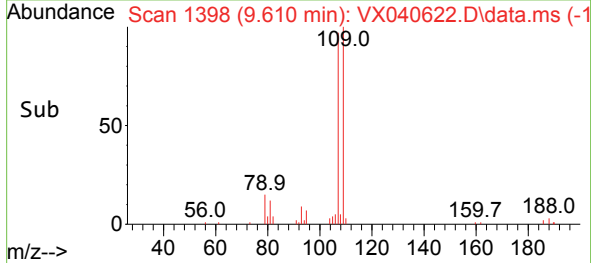
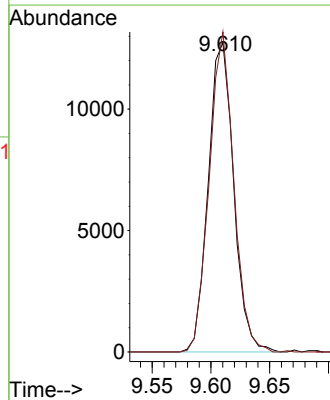
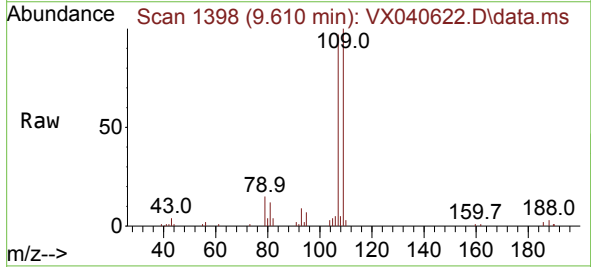
Instrument : MSVOA_X
 ClientSampleId : VX0309WBSD01

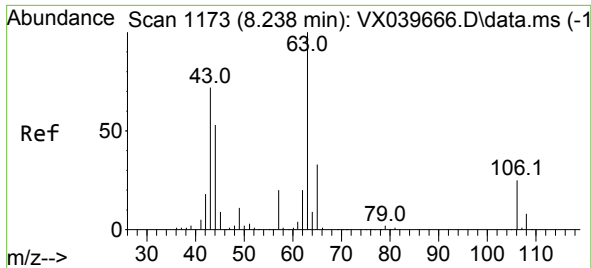
Tgt Ion:129 Resp: 18899
 Ion Ratio Lower Upper
 129 100
 127 76.1 38.3 114.9



#54
 1,2-Dibromoethane
 Concen: 18.213 ug/l
 RT: 9.610 min Scan# 1398
 Delta R.T. 0.000 min
 Lab File: VX040622.D
 Acq: 08 Mar 2024 11:06

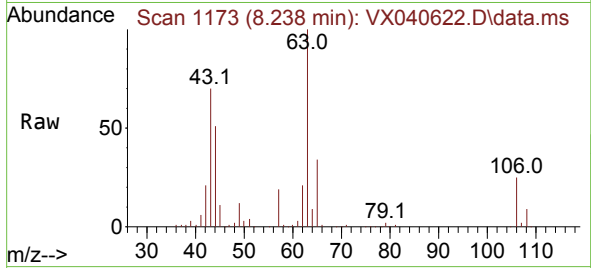
Tgt Ion:107 Resp: 19158
 Ion Ratio Lower Upper
 107 100
 109 99.7 75.1 112.7



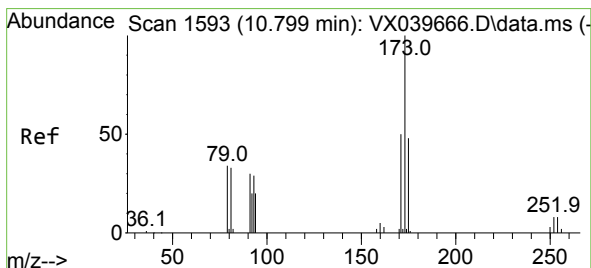
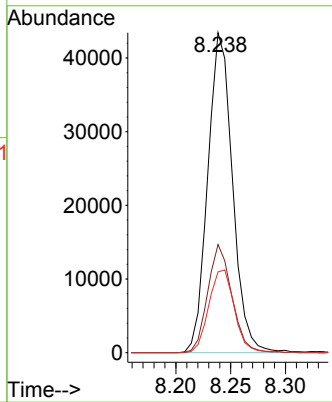
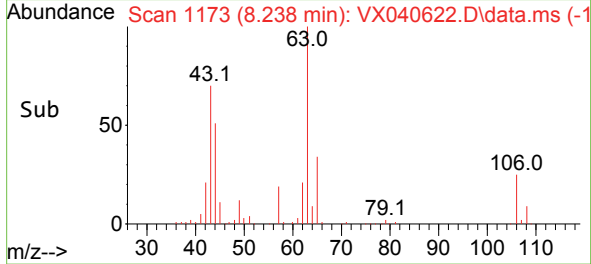


#55
 2-Chloroethyl vinyl ether
 Concen: 89.543 ug/l
 RT: 8.238 min Scan# 1173
 Delta R.T. 0.000 min
 Lab File: VX040622.D
 Acq: 08 Mar 2024 11:06

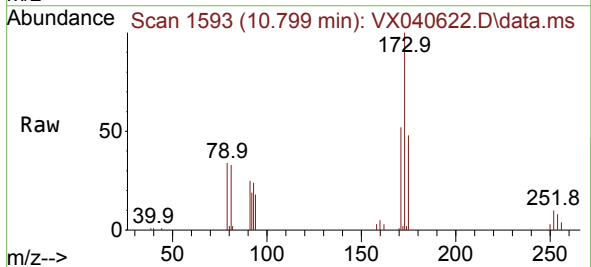
Instrument : MSVOA_X
 ClientSampleId : VX0309WBSD01



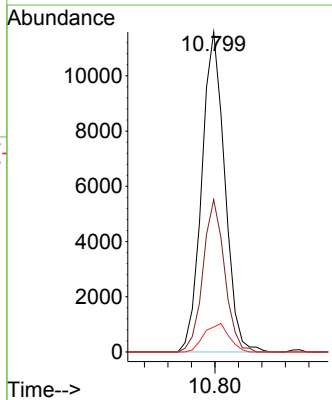
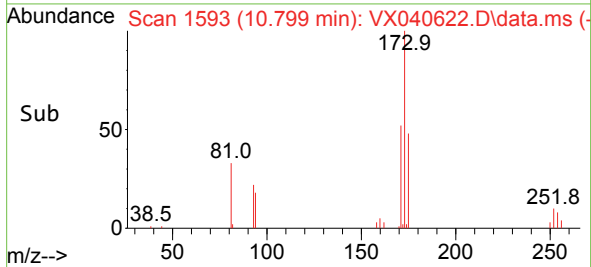
Tgt Ion: 63 Resp: 68244
 Ion Ratio Lower Upper
 63 100
 65 32.8 25.8 38.6
 106 26.8 20.6 31.0

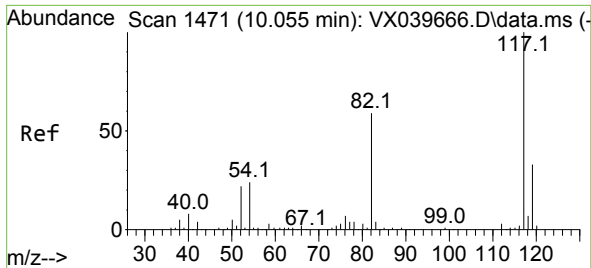


#56
 Bromoform
 Concen: 20.466 ug/l
 RT: 10.799 min Scan# 1593
 Delta R.T. -0.000 min
 Lab File: VX040622.D
 Acq: 08 Mar 2024 11:06



Tgt Ion: 173 Resp: 15731
 Ion Ratio Lower Upper
 173 100
 175 44.8 37.6 56.4
 254 9.6 5.8 8.8#

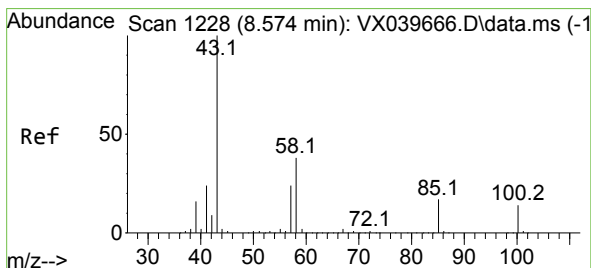
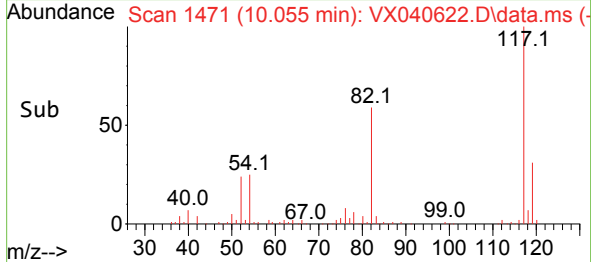
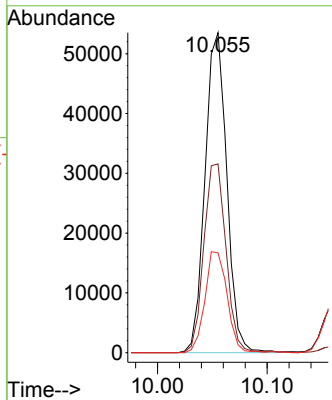
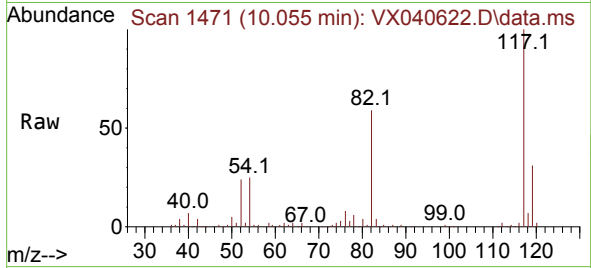




#57
 Chlorobenzene-d5
 Concen: 30.000 ug/l
 RT: 10.055 min Scan# 14
 Delta R.T. 0.000 min
 Lab File: VX040622.D
 Acq: 08 Mar 2024 11:06

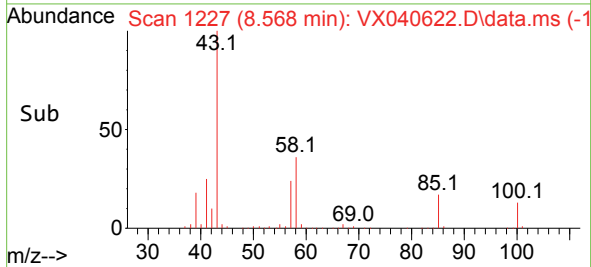
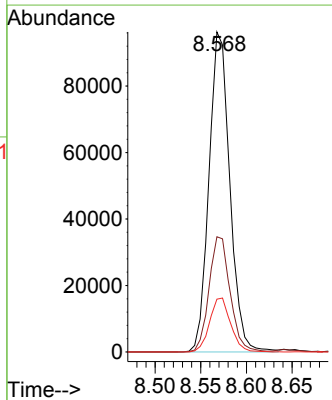
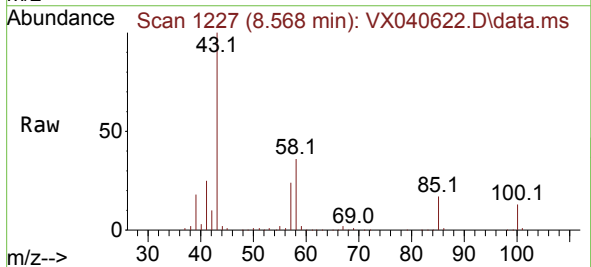
Instrument : MSVOA_X
 ClientSampleId : VX0309WBSD01

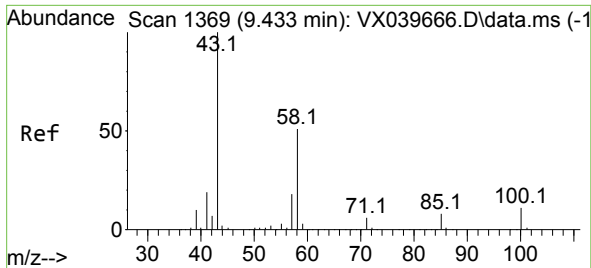
Tgt Ion	Resp	Lower	Upper
117	73837	100	
82	60.2	47.0	70.6
119	32.0	25.2	37.8



#58
 4-Methyl-2-Pentanone
 Concen: 92.801 ug/l
 RT: 8.568 min Scan# 1227
 Delta R.T. -0.006 min
 Lab File: VX040622.D
 Acq: 08 Mar 2024 11:06

Tgt Ion	Resp	Lower	Upper
43	152580	100	
58	36.4	30.1	45.1
85	17.0	13.9	20.9



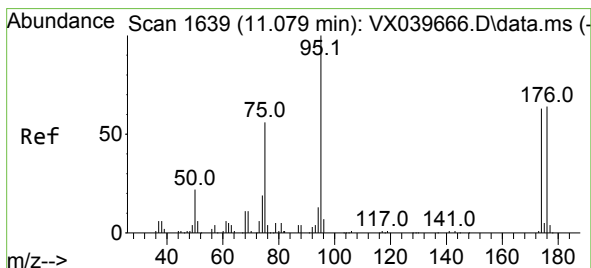
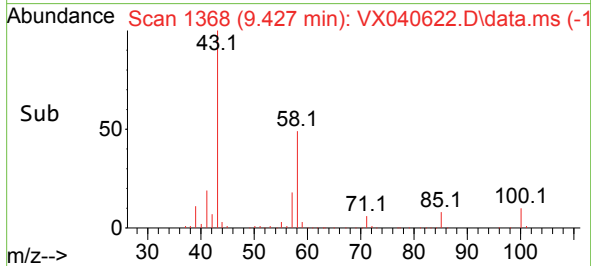
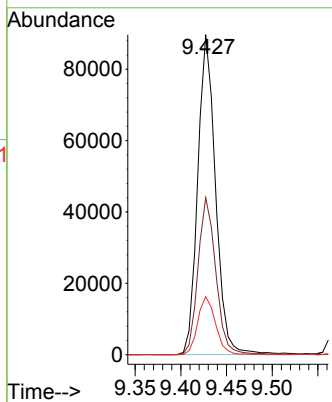
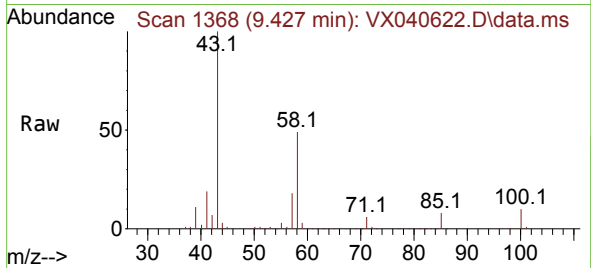


#59
 2-Hexanone
 Concen: 91.455 ug/l
 RT: 9.427 min Scan# 11
 Delta R.T. -0.006 min
 Lab File: VX040622.D
 Acq: 08 Mar 2024 11:06

Instrument :
 MSVOA_X
 ClientSampleId :
 VX0309WBSD01

Tgt Ion: 43 Resp: 121457

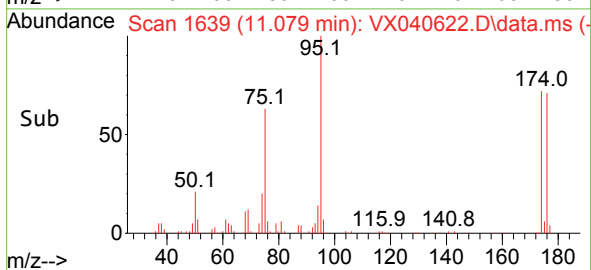
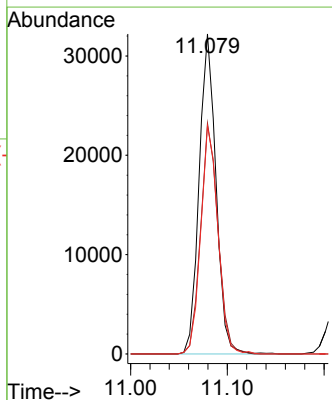
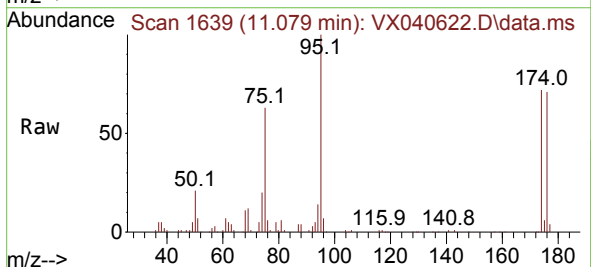
Ion	Ratio	Lower	Upper
43	100		
58	49.1	42.7	64.1
57	18.0	14.8	22.2

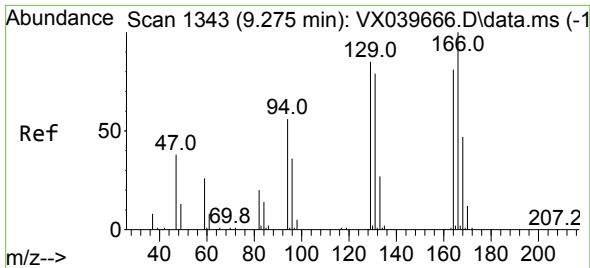


#60
 4-Bromofluorobenzene
 Concen: 30.832 ug/l
 RT: 11.079 min Scan# 1639
 Delta R.T. 0.000 min
 Lab File: VX040622.D
 Acq: 08 Mar 2024 11:06

Tgt Ion: 95 Resp: 39049

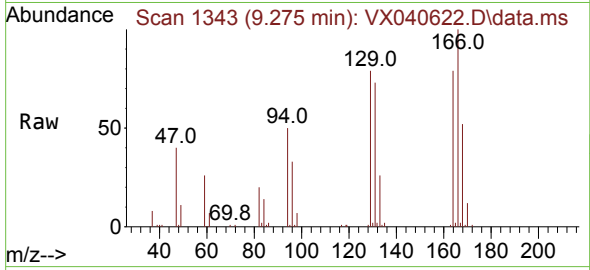
Ion	Ratio	Lower	Upper
95	100		
174	74.4	55.4	83.2
176	73.0	52.6	78.8



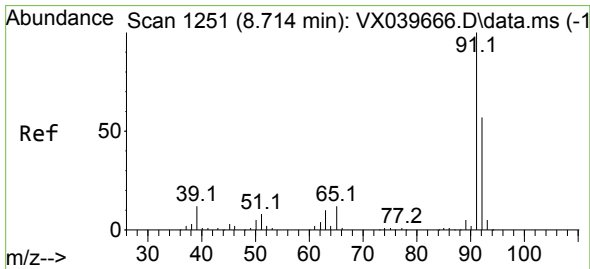
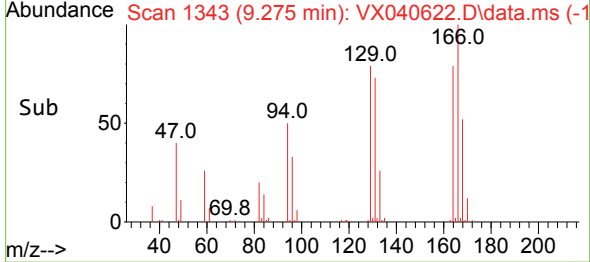
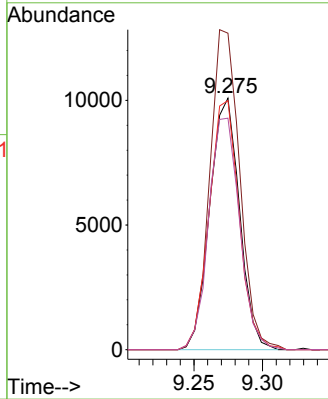


#61
 Tetrachloroethene
 Concen: 17.358 ug/l
 RT: 9.275 min Scan# 11
 Delta R.T. -0.000 min
 Lab File: VX040622.D
 Acq: 08 Mar 2024 11:06

Instrument :
 MSVOA_X
 ClientSampleId :
 VX0309WBSD01

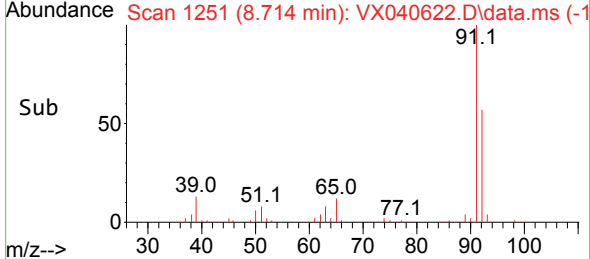
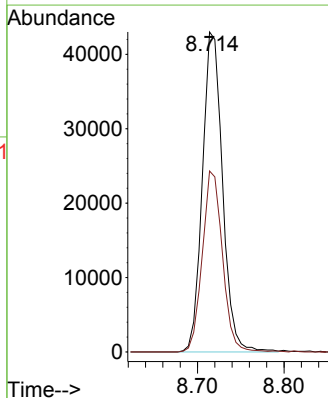
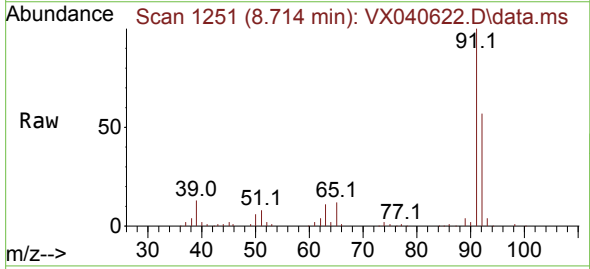


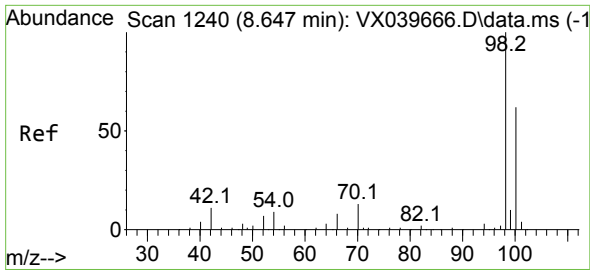
Tgt Ion:164 Resp: 15212
 Ion Ratio Lower Upper
 164 100
 166 125.9 104.0 156.0
 129 99.1 82.0 123.0
 131 92.0 76.4 114.6



#62
 Toluene
 Concen: 17.087 ug/l
 RT: 8.714 min Scan# 1251
 Delta R.T. -0.000 min
 Lab File: VX040622.D
 Acq: 08 Mar 2024 11:06

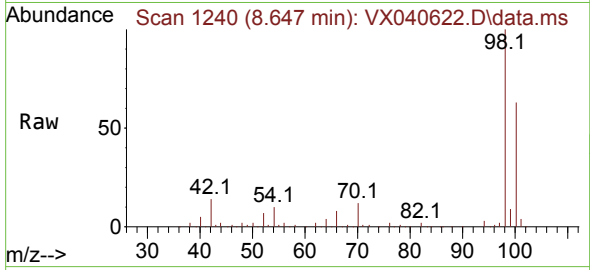
Tgt Ion: 91 Resp: 69486
 Ion Ratio Lower Upper
 91 100
 92 56.5 45.9 68.9



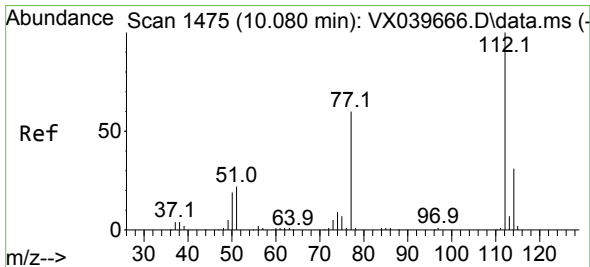
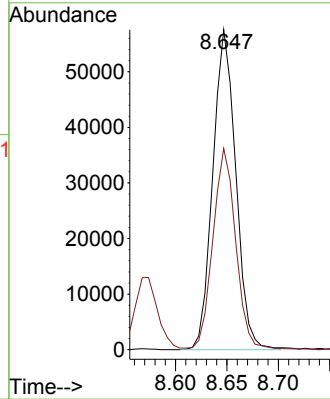
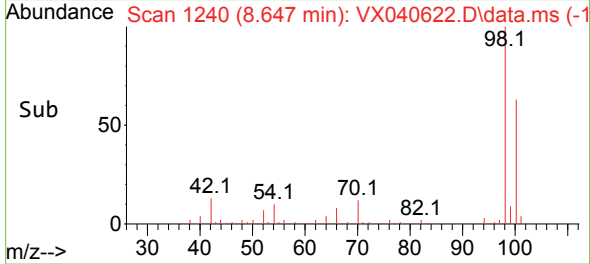


#63
 Toluene-d8
 Concen: 27.375 ug/l
 RT: 8.647 min Scan# 11
 Delta R.T. -0.000 min
 Lab File: VX040622.D
 Acq: 08 Mar 2024 11:06

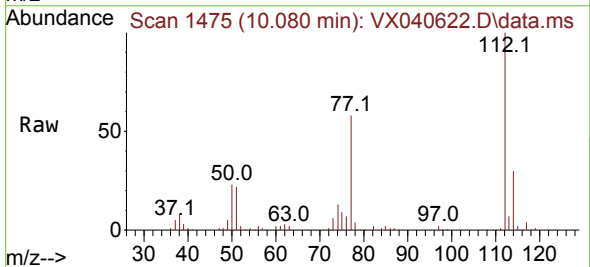
Instrument :
 MSVOA_X
 ClientSampleId :
 VX0309WBSD01



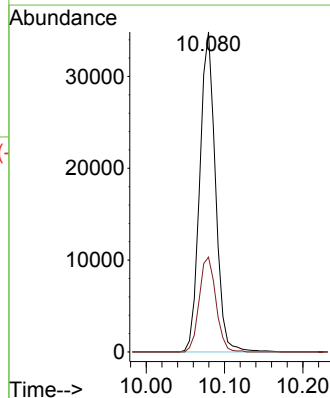
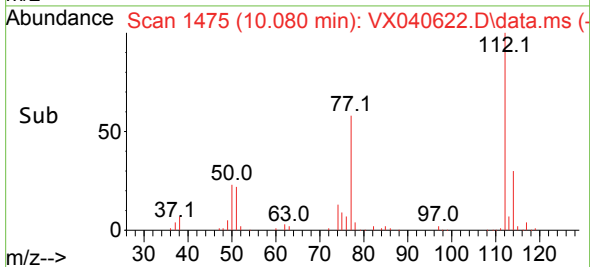
Tgt Ion: 98 Resp: 89326
 Ion Ratio Lower Upper
 98 100
 100 62.8 51.0 76.4

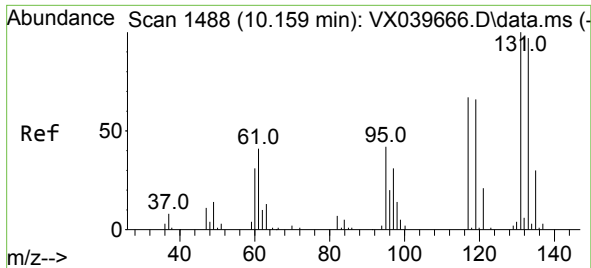


#64
 Chlorobenzene
 Concen: 19.523 ug/l
 RT: 10.080 min Scan# 1475
 Delta R.T. -0.000 min
 Lab File: VX040622.D
 Acq: 08 Mar 2024 11:06



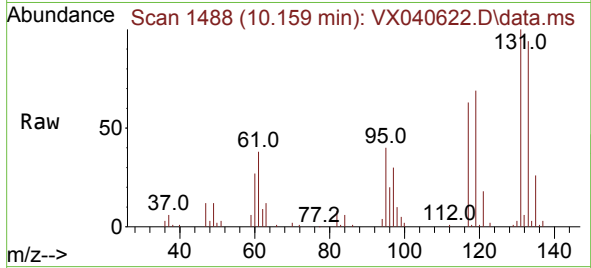
Tgt Ion: 112 Resp: 48525
 Ion Ratio Lower Upper
 112 100
 114 29.7 25.9 38.9



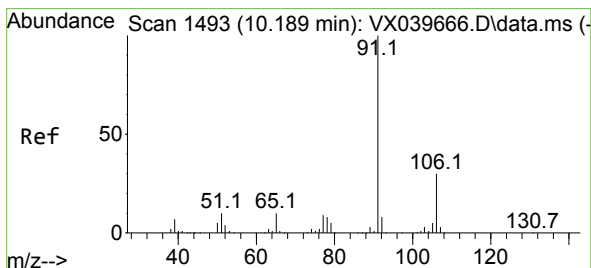
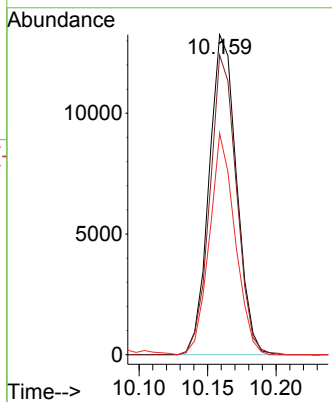
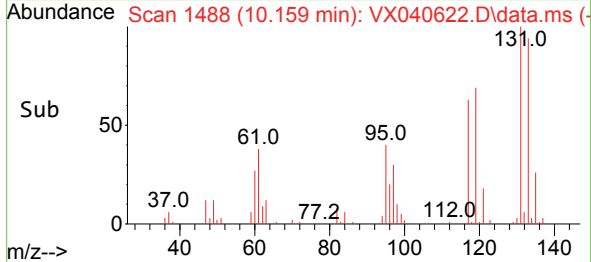


#65
 1,1,1,2-Tetrachloroethane
 Concen: 19.504 ug/l
 RT: 10.159 min Scan# 1488
 Delta R.T. -0.000 min
 Lab File: VX040622.D
 Acq: 08 Mar 2024 11:06

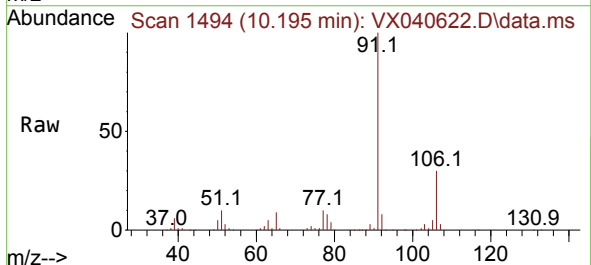
Instrument : MSVOA_X
 ClientSampleId : VX0309WBSD01



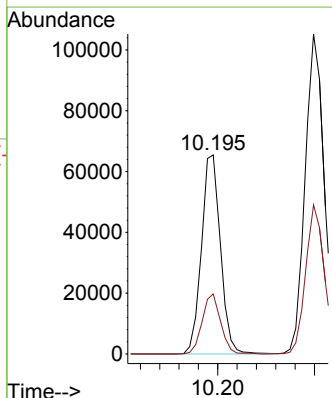
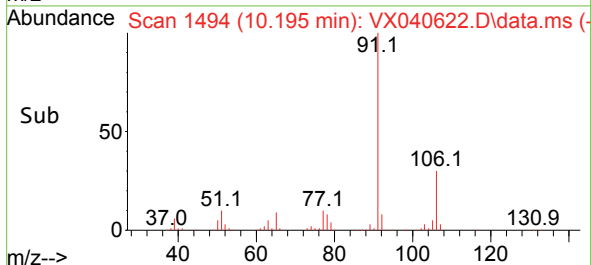
Tgt Ion:131 Resp: 18490
 Ion Ratio Lower Upper
 131 100
 133 90.7 0.0 191.8
 119 64.4 0.0 135.4

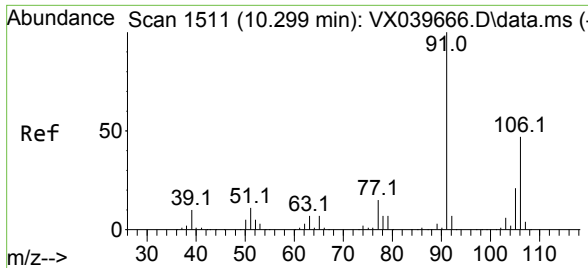


#66
 Ethyl Benzene
 Concen: 19.122 ug/l
 RT: 10.195 min Scan# 1494
 Delta R.T. 0.006 min
 Lab File: VX040622.D
 Acq: 08 Mar 2024 11:06



Tgt Ion: 91 Resp: 89662
 Ion Ratio Lower Upper
 91 100
 106 30.1 24.4 36.6

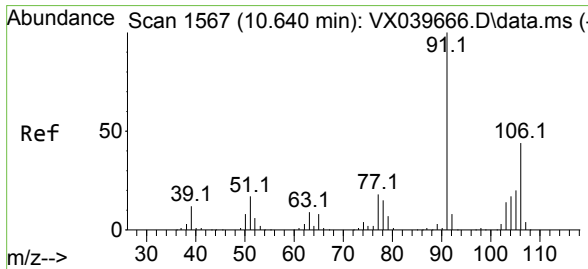
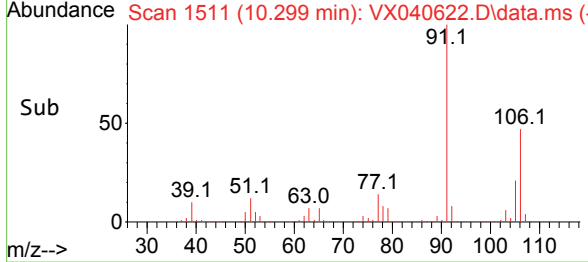
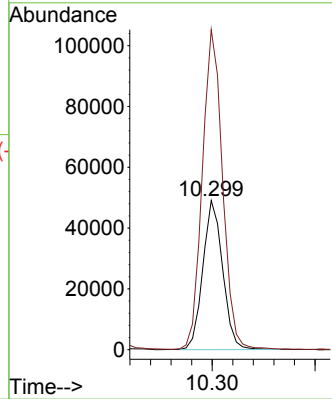
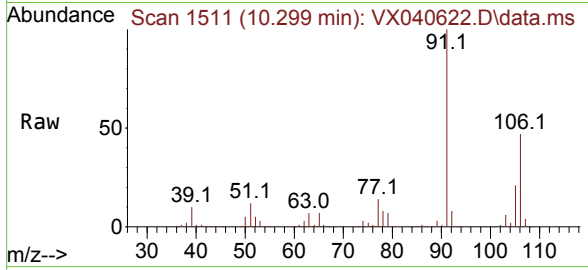




#67
 m/p-Xylenes
 Concen: 37.965 ug/l
 RT: 10.299 min Scan# 1511
 Delta R.T. 0.000 min
 Lab File: VX040622.D
 Acq: 08 Mar 2024 11:06

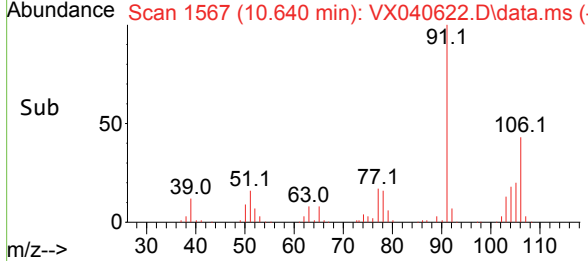
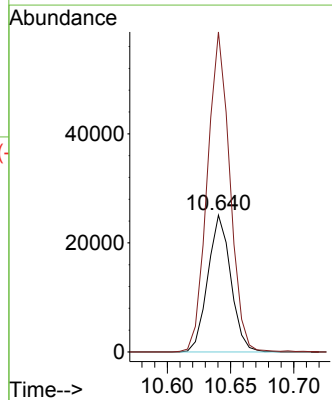
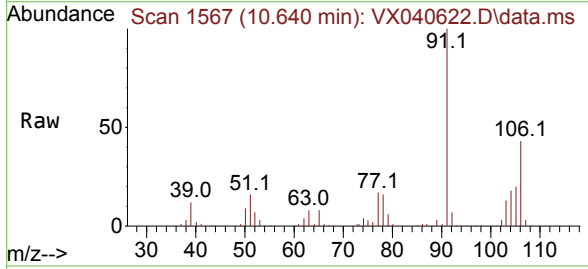
Instrument : MSVOA_X
 ClientSampleId : VX0309WBSD01

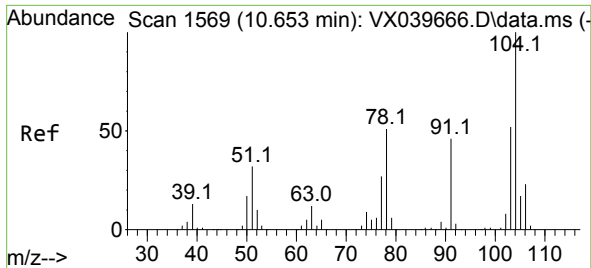
Tgt Ion:106 Resp: 65736
 Ion Ratio Lower Upper
 106 100
 91 220.0 169.4 254.0



#68
 o-Xylene
 Concen: 19.004 ug/l
 RT: 10.640 min Scan# 1567
 Delta R.T. 0.000 min
 Lab File: VX040622.D
 Acq: 08 Mar 2024 11:06

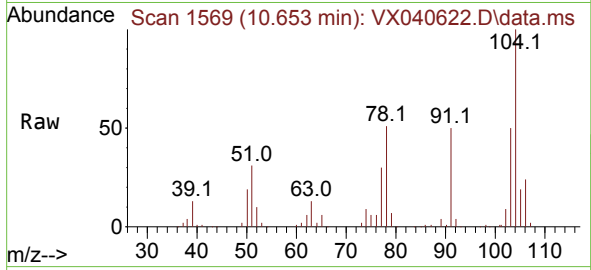
Tgt Ion:106 Resp: 31676
 Ion Ratio Lower Upper
 106 100
 91 227.9 111.2 333.6



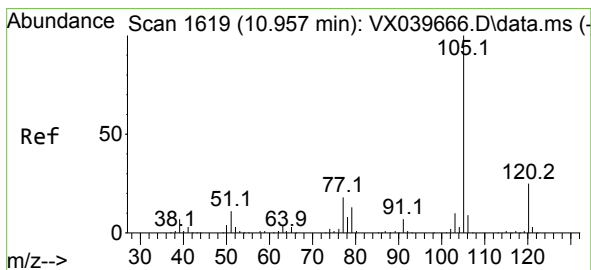
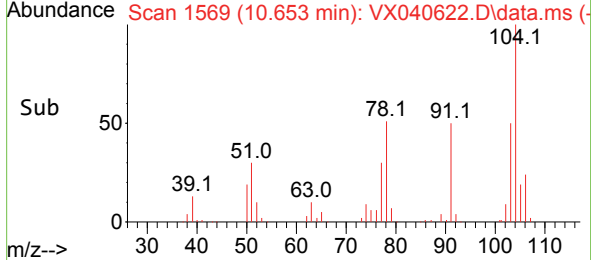
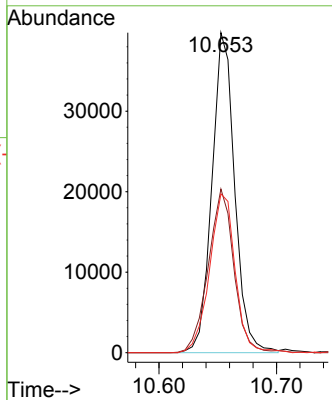


#69
 Styrene
 Concen: 19.163 ug/l
 RT: 10.653 min Scan# 111
 Delta R.T. -0.000 min
 Lab File: VX040622.D
 Acq: 08 Mar 2024 11:06

Instrument :
 MSVOA_X
 ClientSampleId :
 VX0309WBSD01

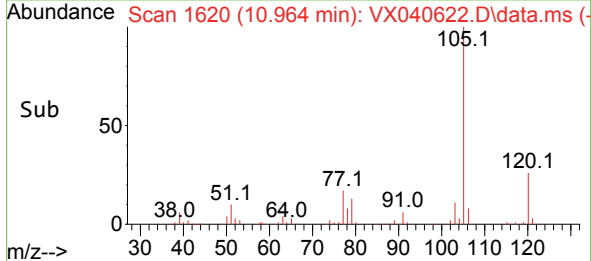
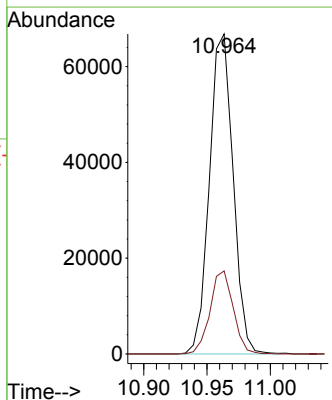
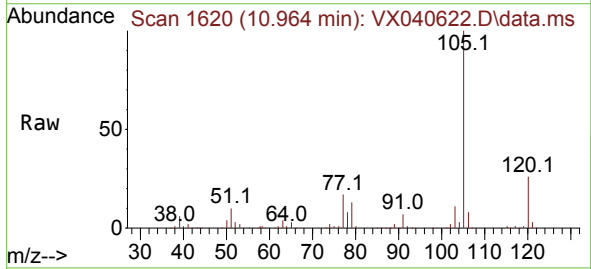


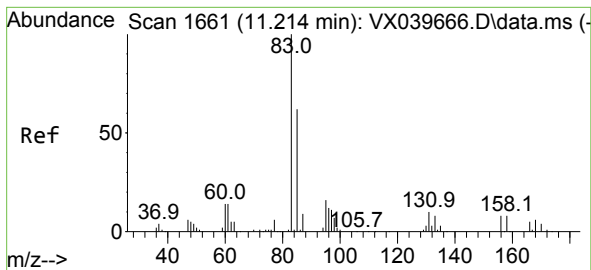
Tgt Ion	Resp	Lower	Upper
104	53664	100	100
78	57.2	43.7	65.5
103	55.8	44.6	67.0



#70
 Isopropylbenzene
 Concen: 19.332 ug/l
 RT: 10.964 min Scan# 1620
 Delta R.T. 0.007 min
 Lab File: VX040622.D
 Acq: 08 Mar 2024 11:06

Tgt Ion	Resp	Lower	Upper
105	87070	100	100
120	25.4	18.5	34.3

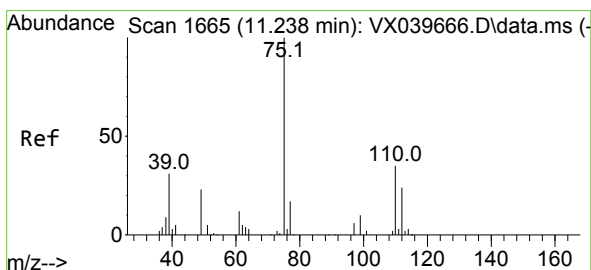
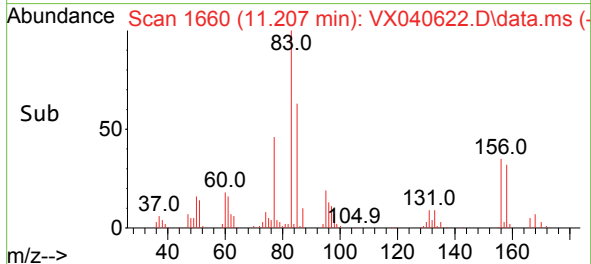
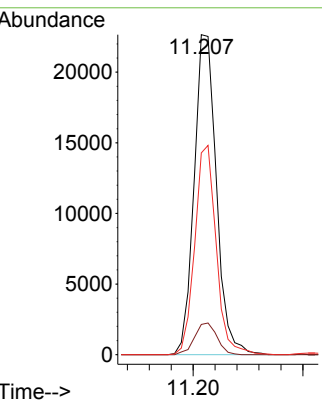
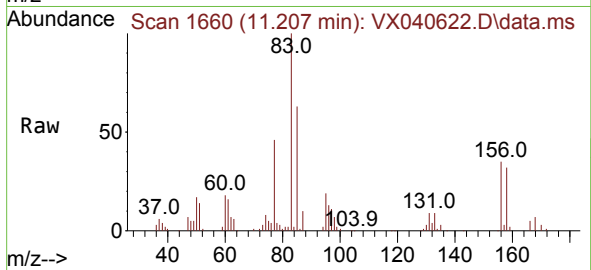




#71
 1,1,2,2-Tetrachloroethane
 Concen: 20.274 ug/l
 RT: 11.207 min Scan# 1660
 Delta R.T. -0.007 min
 Lab File: VX040622.D
 Acq: 08 Mar 2024 11:06

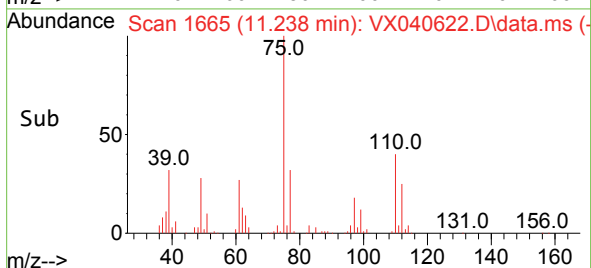
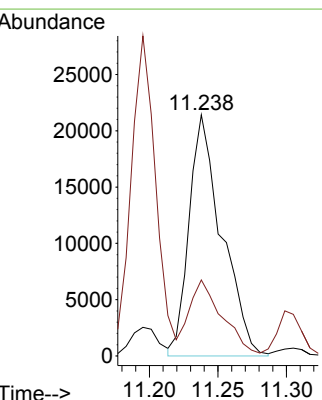
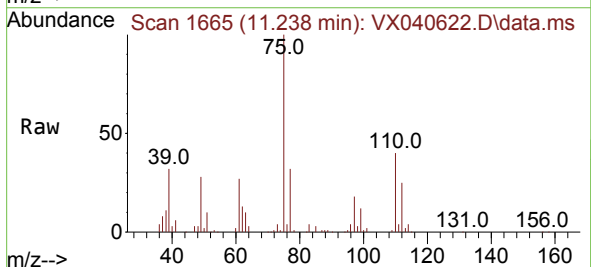
Instrument : MSVOA_X
 ClientSampleId : VX0309WBSD01

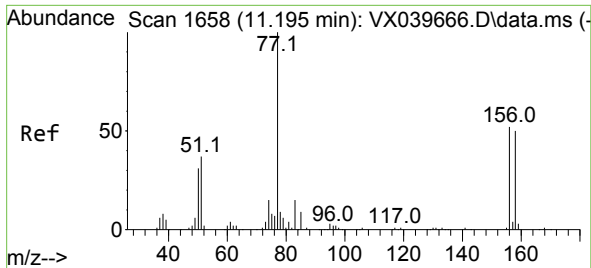
Tgt Ion	Resp	Lower	Upper
83	32012	100	100
131	9.9	4.6	13.8
85	62.8	32.5	97.4



#72
 1,2,3-Trichloropropane
 Concen: 25.037 ug/l
 RT: 11.238 min Scan# 1665
 Delta R.T. -0.000 min
 Lab File: VX040622.D
 Acq: 08 Mar 2024 11:06

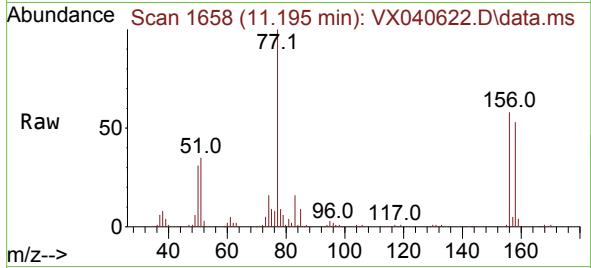
Tgt Ion	Resp	Lower	Upper
75	35570	100	100
77	32.3	0.0	76.4



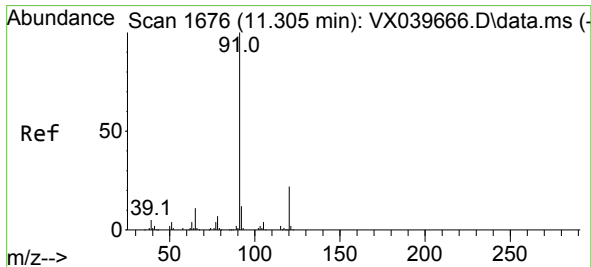
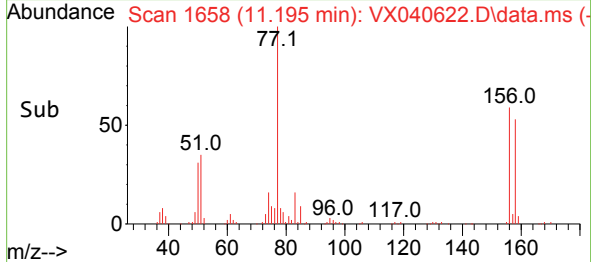
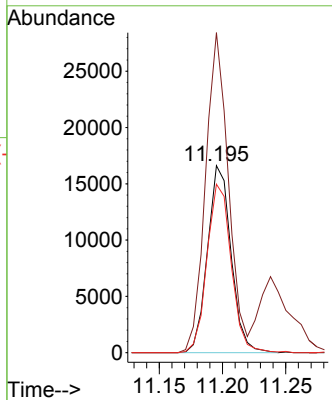


#73
 Bromobenzene
 Concen: 20.180 ug/l
 RT: 11.195 min Scan# 1658
 Delta R.T. 0.000 min
 Lab File: VX040622.D
 Acq: 08 Mar 2024 11:06

Instrument :
 MSVOA_X
 ClientSampleId :
 VX0309WBSD01

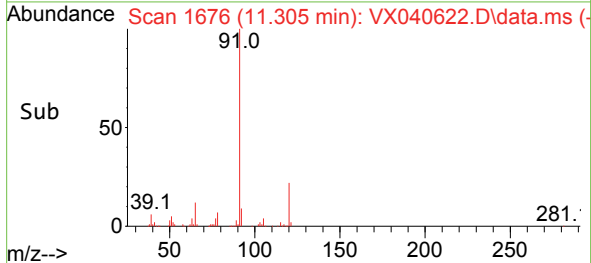
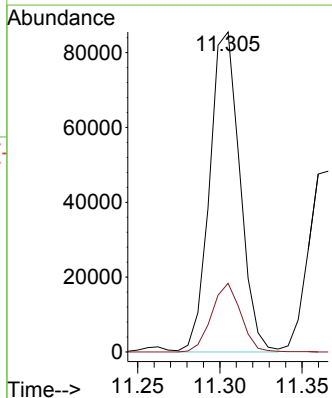
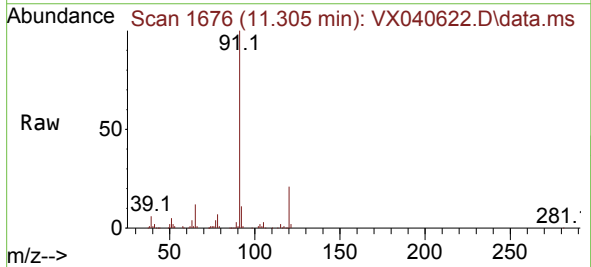


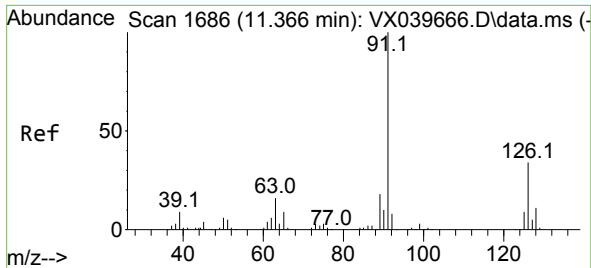
Tgt Ion:156 Resp: 21517
 Ion Ratio Lower Upper
 156 100
 77 165.8 0.0 363.2
 158 92.5 0.0 197.8



#74
 n-propylbenzene
 Concen: 19.661 ug/l
 RT: 11.305 min Scan# 1676
 Delta R.T. -0.000 min
 Lab File: VX040622.D
 Acq: 08 Mar 2024 11:06

Tgt Ion: 91 Resp: 109368
 Ion Ratio Lower Upper
 91 100
 120 20.7 0.0 43.4

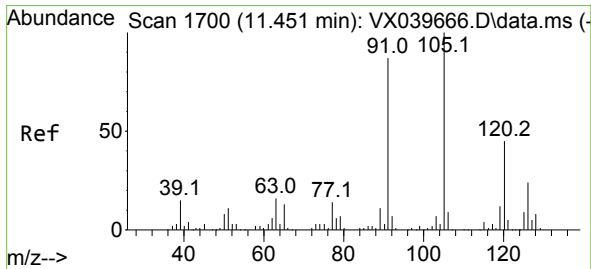
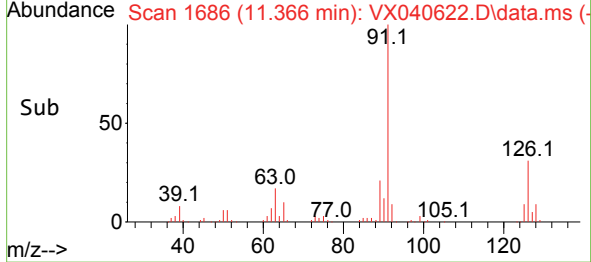
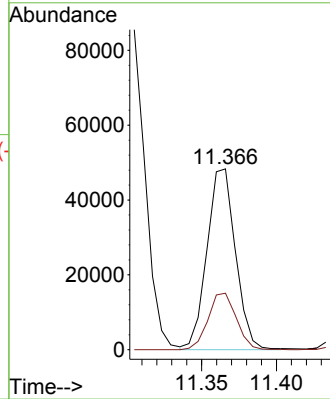
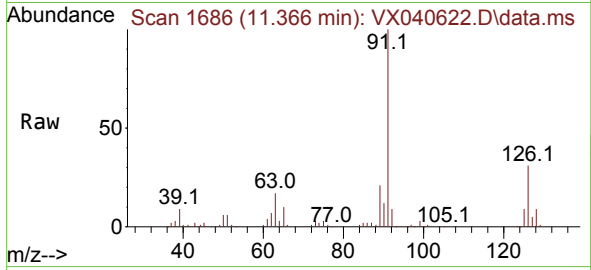




#75
 2-Chlorotoluene
 Concen: 19.456 ug/l
 RT: 11.366 min Scan# 1686
 Delta R.T. -0.000 min
 Lab File: VX040622.D
 Acq: 08 Mar 2024 11:06

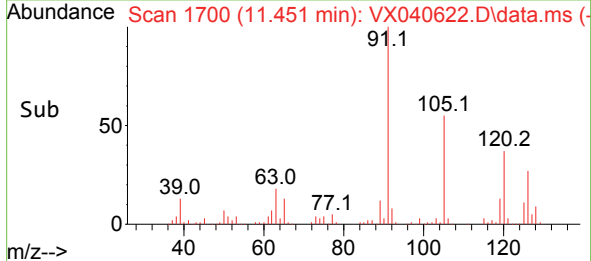
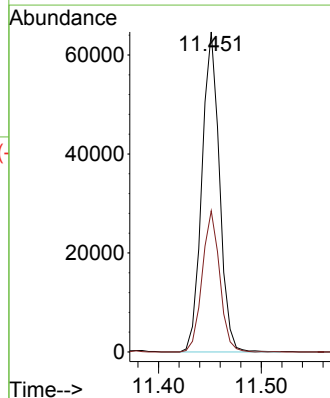
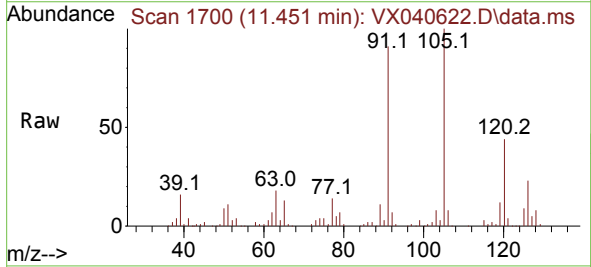
Instrument : MSVOA_X
 ClientSampleId : VX0309WBSD01

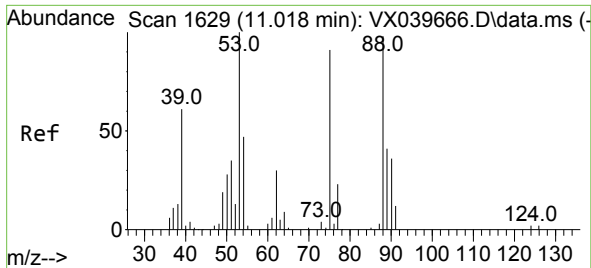
Tgt Ion: 91 Resp: 64224
 Ion Ratio Lower Upper
 91 100
 126 30.8 0.0 64.2



#76
 1,3,5-Trimethylbenzene
 Concen: 19.380 ug/l
 RT: 11.451 min Scan# 1700
 Delta R.T. 0.000 min
 Lab File: VX040622.D
 Acq: 08 Mar 2024 11:06

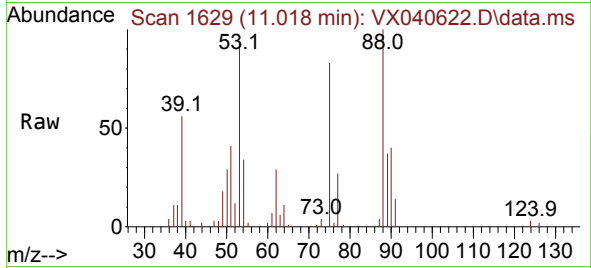
Tgt Ion: 105 Resp: 76844
 Ion Ratio Lower Upper
 105 100
 120 44.0 0.0 92.6



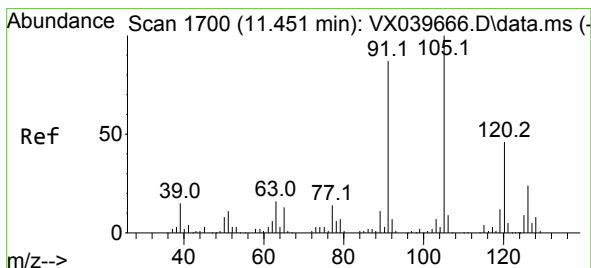
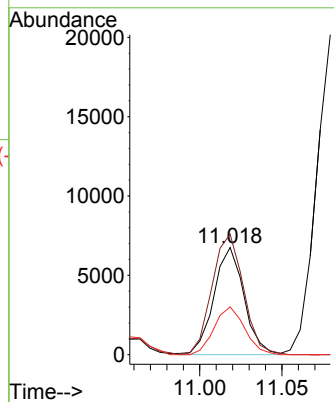
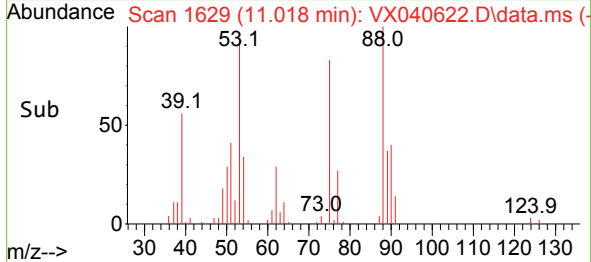


#77
 t-1,4-Dichloro-2-butene
 Concen: 19.601 ug/l
 RT: 11.018 min Scan# 1
 Delta R.T. 0.000 min
 Lab File: VX040622.D
 Acq: 08 Mar 2024 11:06

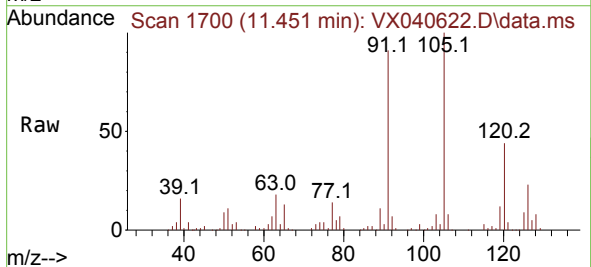
Instrument :
 MSVOA_X
 ClientSampleId :
 VX0309WBSD01



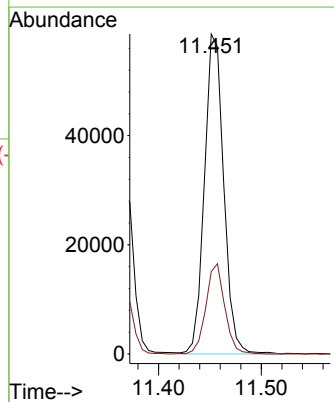
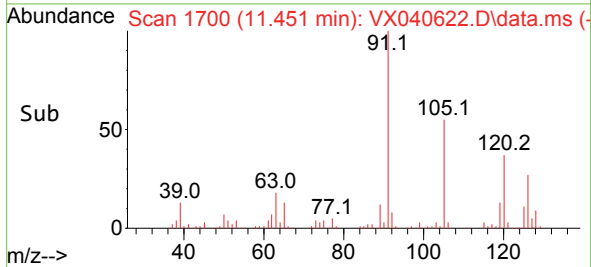
Tgt Ion: 75 Resp: 8654
 Ion Ratio Lower Upper
 75 100
 53 113.7 46.9 140.8
 89 45.2 21.3 63.7

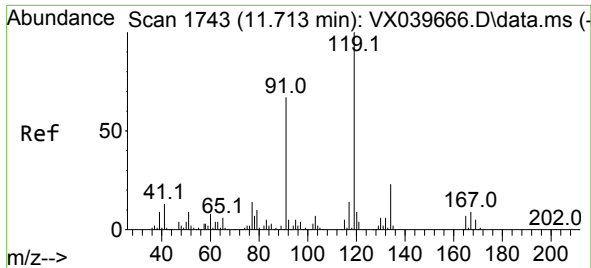


#78
 4-Chlorotoluene
 Concen: 19.439 ug/l
 RT: 11.451 min Scan# 1700
 Delta R.T. 0.000 min
 Lab File: VX040622.D
 Acq: 08 Mar 2024 11:06



Tgt Ion: 91 Resp: 76547
 Ion Ratio Lower Upper
 91 100
 126 27.5 0.0 57.4



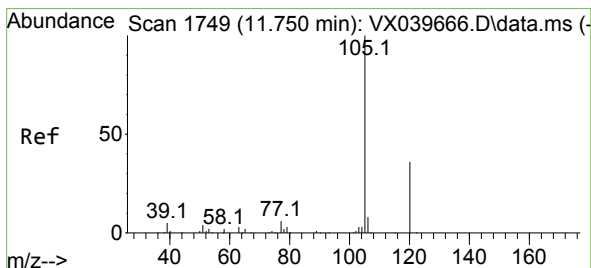
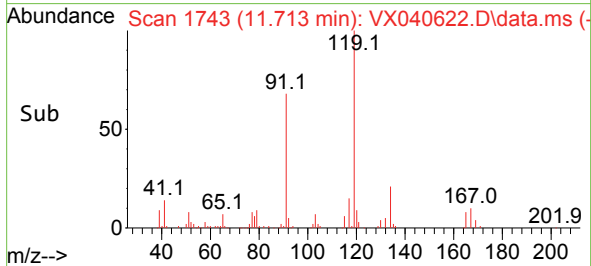
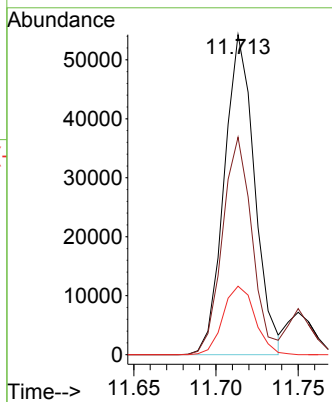
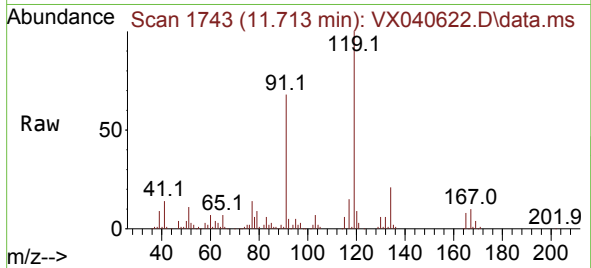


#79
 tert-butylbenzene
 Concen: 18.913 ug/l
 RT: 11.713 min Scan# 1743
 Delta R.T. 0.000 min
 Lab File: VX040622.D
 Acq: 08 Mar 2024 11:06

Instrument : MSVOA_X
 ClientSampleId : VX0309WBSD01

Tgt Ion:119 Resp: 69993

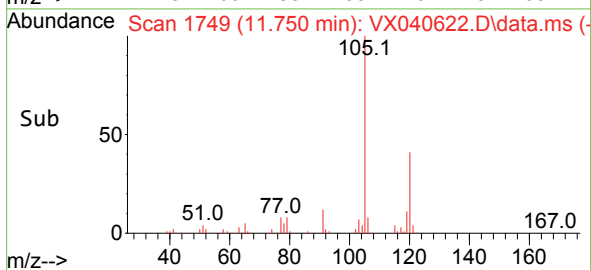
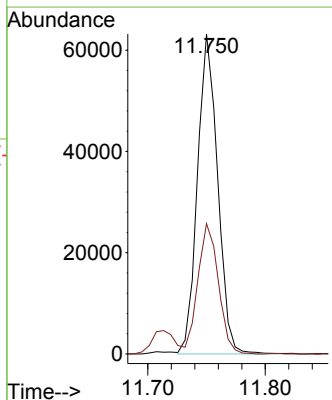
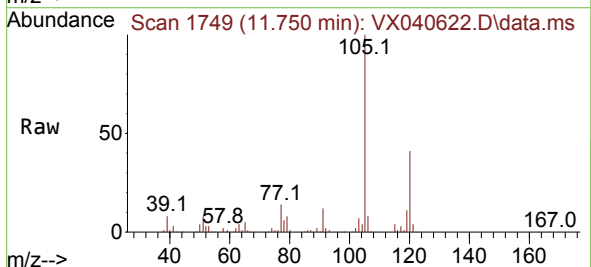
Ion	Ratio	Lower	Upper
119	100		
91	66.6	0.0	125.6
134	22.5	0.0	43.8

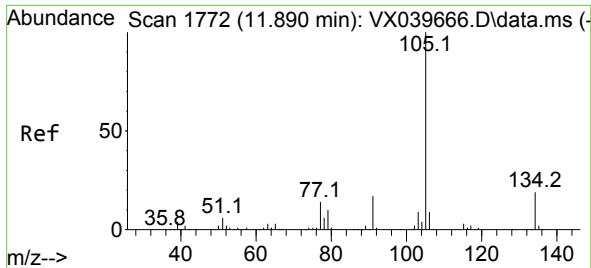


#80
 1,2,4-Trimethylbenzene
 Concen: 19.296 ug/l
 RT: 11.750 min Scan# 1749
 Delta R.T. -0.000 min
 Lab File: VX040622.D
 Acq: 08 Mar 2024 11:06

Tgt Ion:105 Resp: 75385

Ion	Ratio	Lower	Upper
105	100		
120	41.2	0.0	86.4

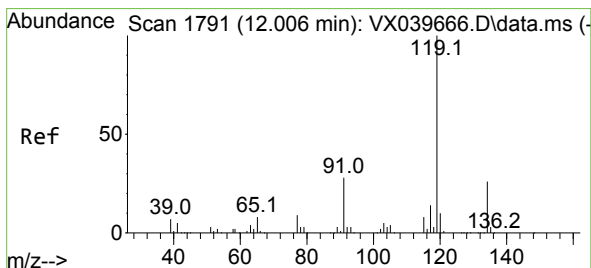
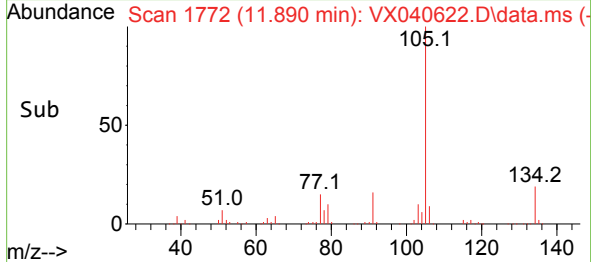
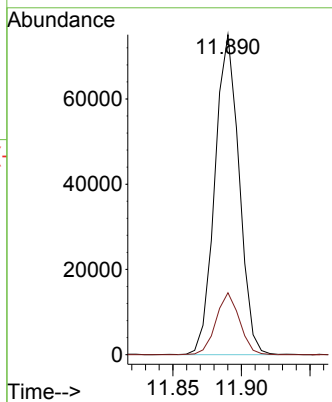
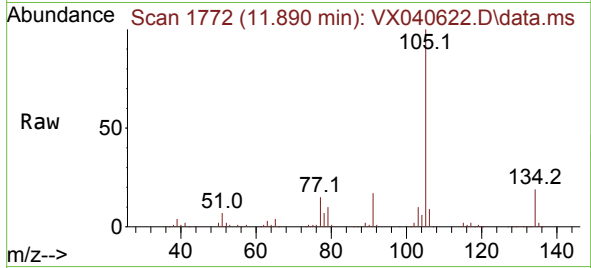




#81
 sec-Butylbenzene
 Concen: 18.878 ug/l
 RT: 11.890 min Scan# 1772
 Delta R.T. 0.000 min
 Lab File: VX040622.D
 Acq: 08 Mar 2024 11:06

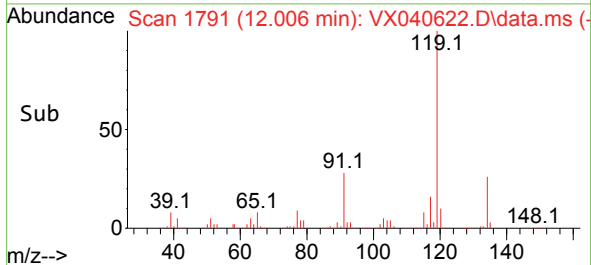
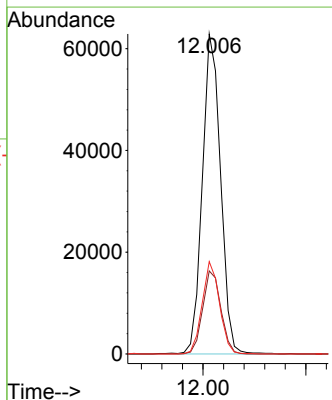
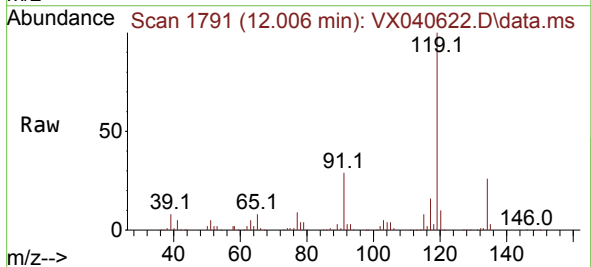
Instrument : MSVOA_X
 ClientSampleId : VX0309WBSD01

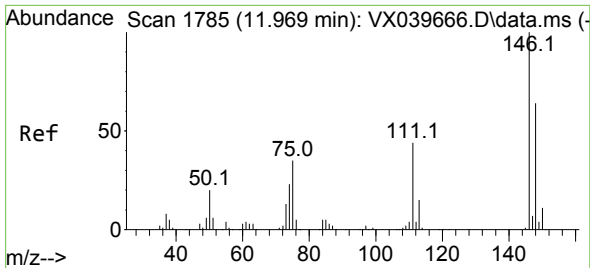
Tgt Ion:105 Resp: 92241
 Ion Ratio Lower Upper
 105 100
 134 18.8 0.0 38.4



#82
 p-Isopropyltoluene
 Concen: 19.383 ug/l
 RT: 12.006 min Scan# 1791
 Delta R.T. 0.000 min
 Lab File: VX040622.D
 Acq: 08 Mar 2024 11:06

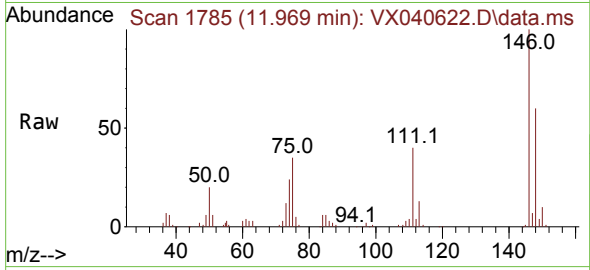
Tgt Ion:119 Resp: 77524
 Ion Ratio Lower Upper
 119 100
 134 25.8 0.0 52.6
 91 27.4 0.0 54.2



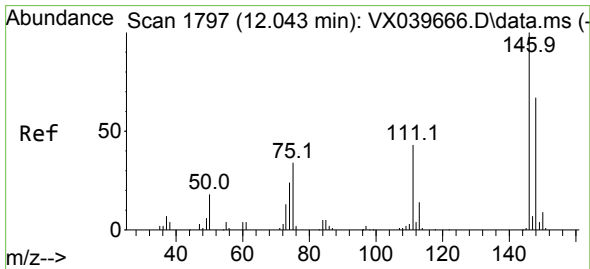
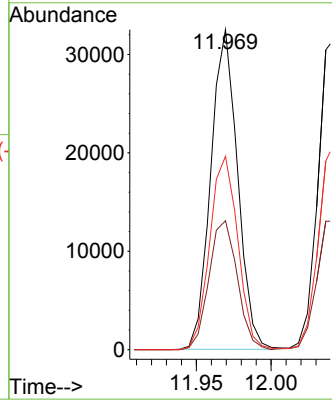
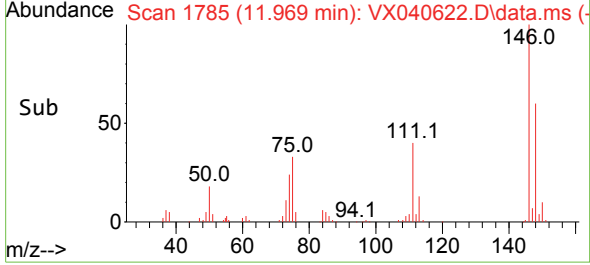


#83
 1,3-Dichlorobenzene
 Concen: 19.523 ug/l
 RT: 11.969 min Scan# 1785
 Delta R.T. 0.000 min
 Lab File: VX040622.D
 Acq: 08 Mar 2024 11:06

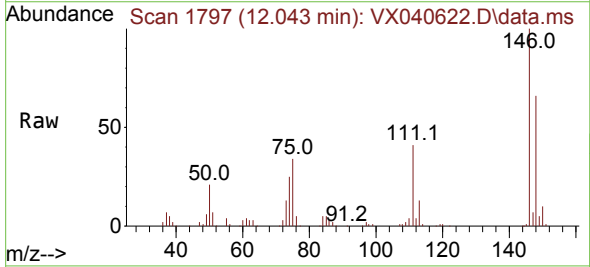
Instrument :
 MSVOA_X
 ClientSampleId :
 VX0309WBSD01



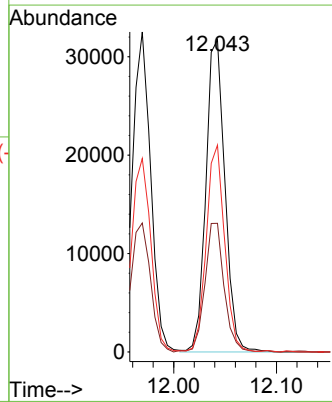
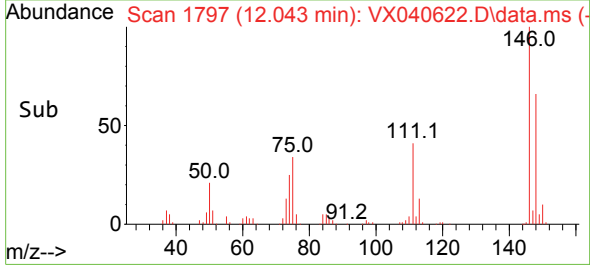
Tgt Ion:146 Resp: 40504
 Ion Ratio Lower Upper
 146 100
 111 42.6 22.3 66.9
 148 63.5 32.8 98.3

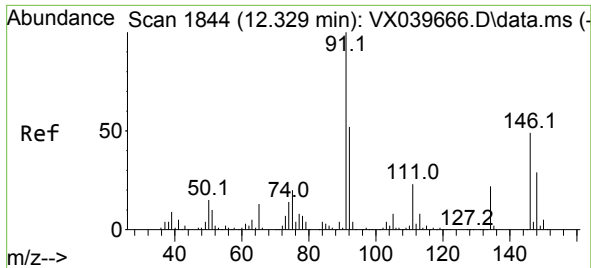


#84
 1,4-Dichlorobenzene
 Concen: 19.249 ug/l
 RT: 12.043 min Scan# 1797
 Delta R.T. -0.000 min
 Lab File: VX040622.D
 Acq: 08 Mar 2024 11:06



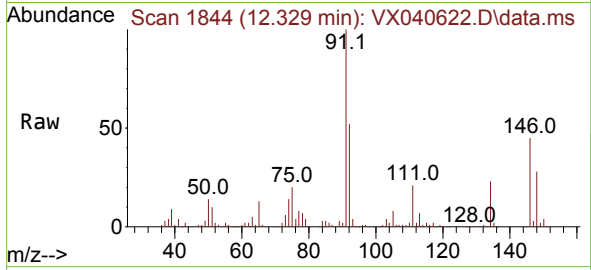
Tgt Ion:146 Resp: 40839
 Ion Ratio Lower Upper
 146 100
 111 41.6 21.4 64.2
 148 64.2 31.8 95.4



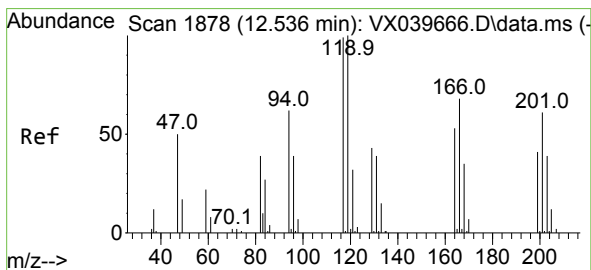
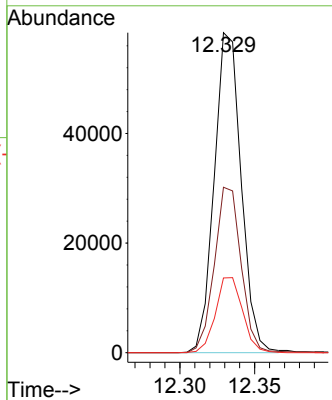
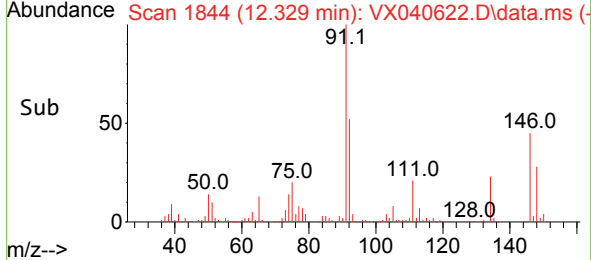


#85
 n-Butylbenzene
 Concen: 18.811 ug/l
 RT: 12.329 min Scan# 1844
 Delta R.T. 0.000 min
 Lab File: VX040622.D
 Acq: 08 Mar 2024 11:06

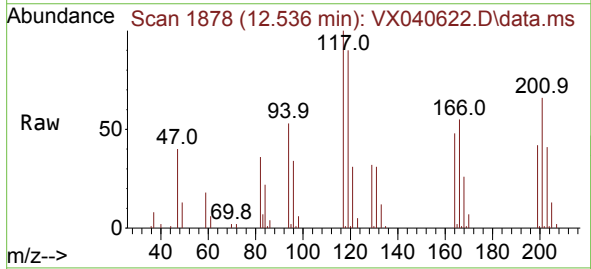
Instrument : MSVOA_X
 ClientSampleId : VX0309WBSD01



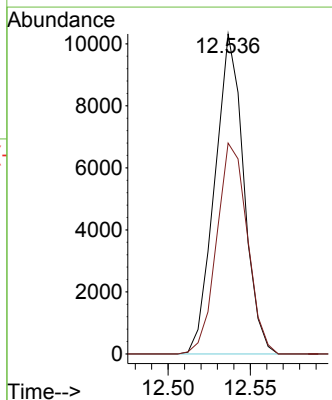
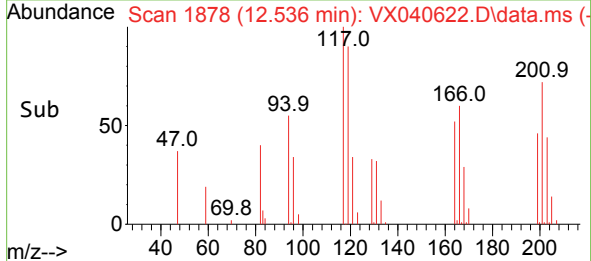
Tgt Ion: 91 Resp: 73209
 Ion Ratio Lower Upper
 91 100
 92 51.5 0.0 106.2
 134 23.6 0.0 48.8

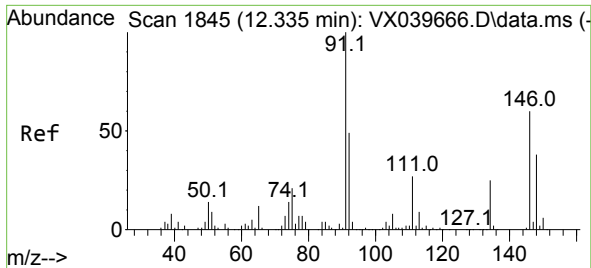


#86
 Hexachloroethane
 Concen: 18.124 ug/l
 RT: 12.536 min Scan# 1878
 Delta R.T. 0.000 min
 Lab File: VX040622.D
 Acq: 08 Mar 2024 11:06



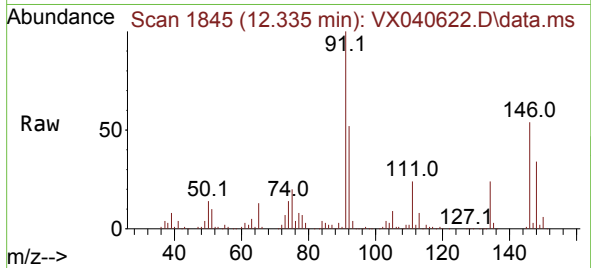
Tgt Ion: 117 Resp: 12648
 Ion Ratio Lower Upper
 117 100
 201 69.8 31.8 95.3



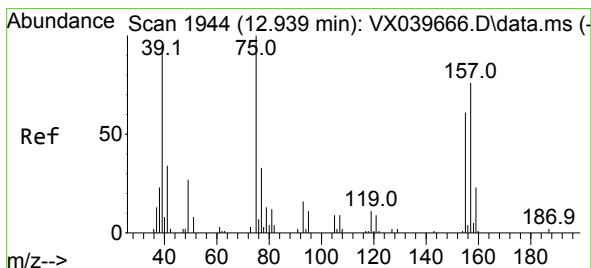
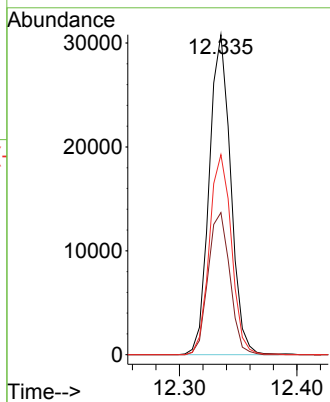
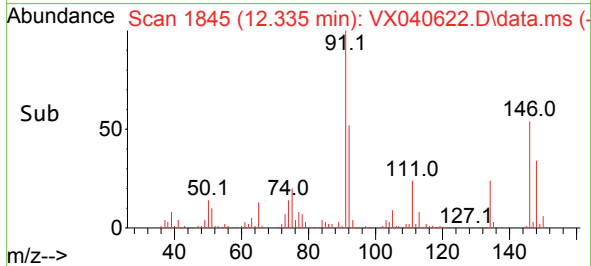


#87
 1,2-Dichlorobenzene
 Concen: 19.387 ug/l
 RT: 12.335 min Scan# 1845
 Delta R.T. 0.000 min
 Lab File: VX040622.D
 Acq: 08 Mar 2024 11:06

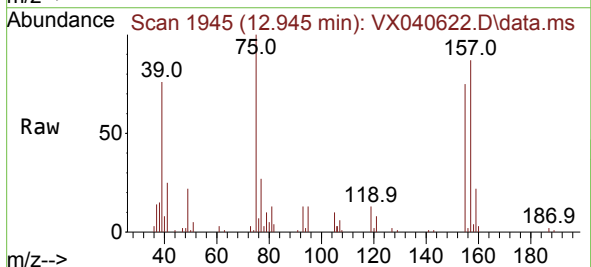
Instrument : MSVOA_X
 ClientSampleId : VX0309WBSD01



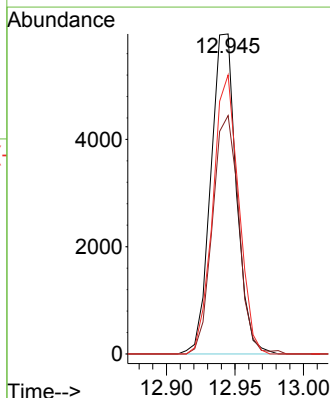
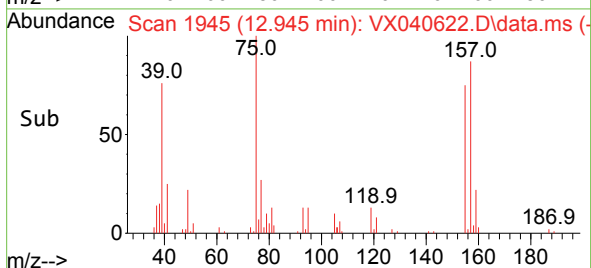
Tgt Ion:146 Resp: 39086
 Ion Ratio Lower Upper
 146 100
 111 45.1 22.4 67.2
 148 64.2 31.9 95.7

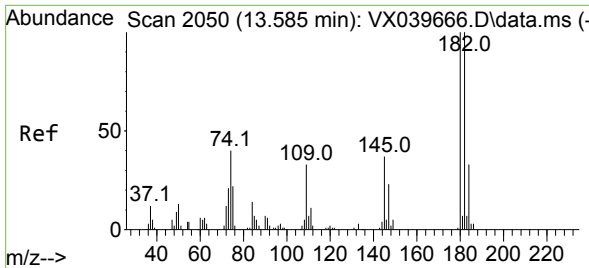


#88
 1,2-Dibromo-3-Chloropropane
 Concen: 18.387 ug/l
 RT: 12.945 min Scan# 1945
 Delta R.T. 0.006 min
 Lab File: VX040622.D
 Acq: 08 Mar 2024 11:06



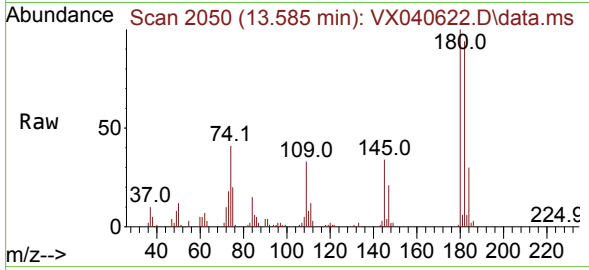
Tgt Ion: 75 Resp: 7763
 Ion Ratio Lower Upper
 75 100
 155 76.1 58.2 87.4
 157 87.6 76.5 114.7



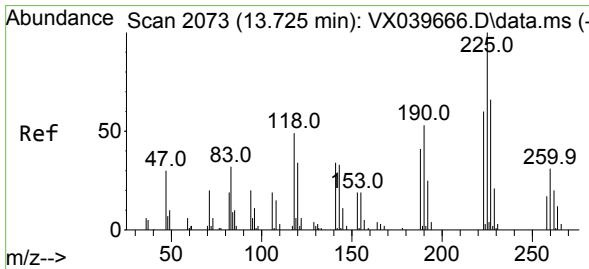
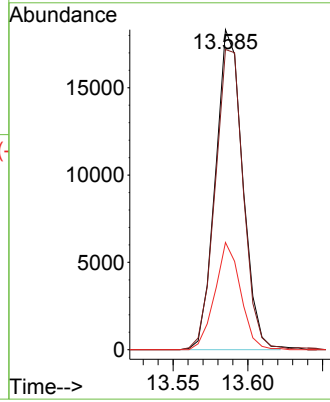
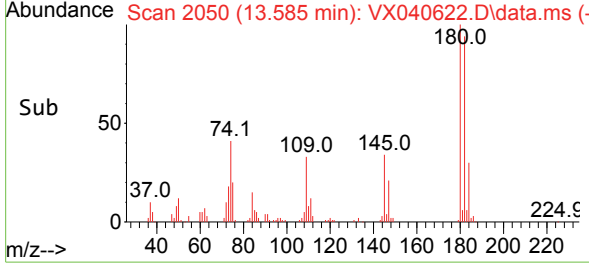


#89
 1,2,4-Trichlorobenzene
 Concen: 17.074 ug/l
 RT: 13.585 min Scan# 2073
 Delta R.T. 0.000 min
 Lab File: VX040622.D
 Acq: 08 Mar 2024 11:06

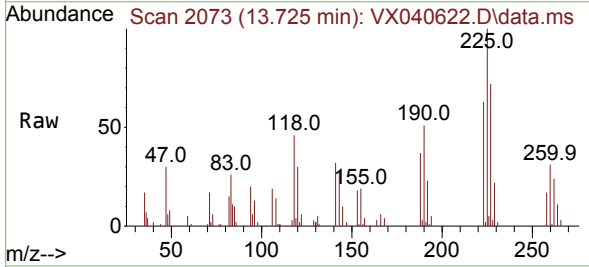
Instrument :
 MSVOA_X
 ClientSampleId :
 VX0309WBSD01



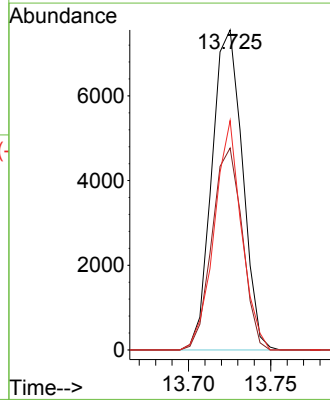
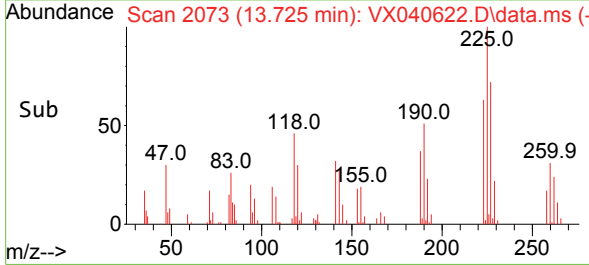
Tgt Ion:180 Resp: 23177
 Ion Ratio Lower Upper
 180 100
 182 96.9 74.5 111.7
 145 31.7 26.6 40.0

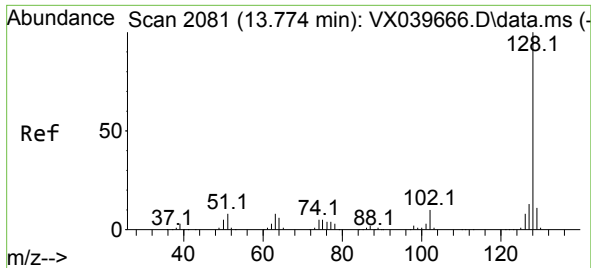


#90
 Hexachlorobutadiene
 Concen: 17.812 ug/l
 RT: 13.725 min Scan# 2073
 Delta R.T. 0.000 min
 Lab File: VX040622.D
 Acq: 08 Mar 2024 11:06



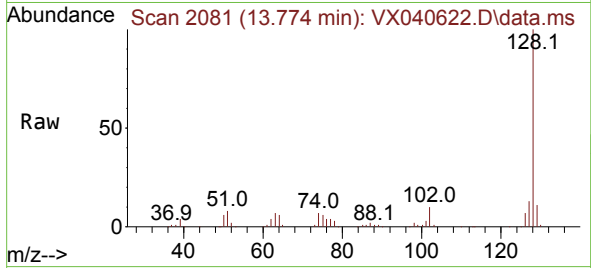
Tgt Ion:225 Resp: 9777
 Ion Ratio Lower Upper
 225 100
 223 62.4 0.0 124.4
 227 64.0 0.0 124.4



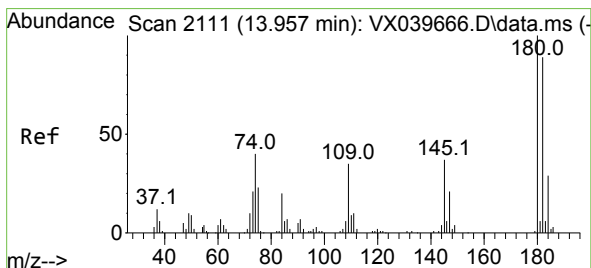
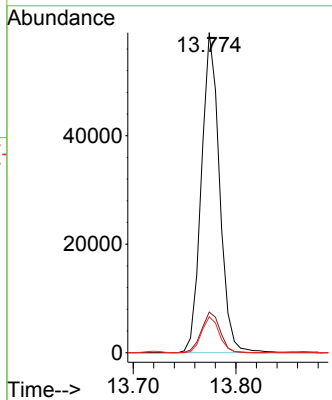
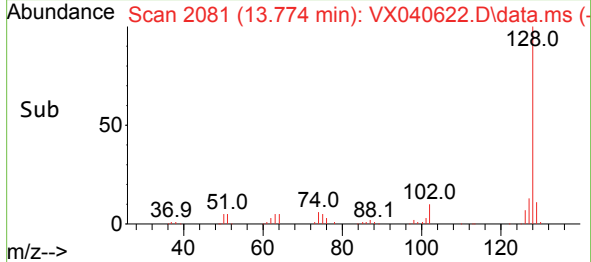


#91
 Naphthalene
 Concen: 16.389 ug/l
 RT: 13.774 min Scan# 2081
 Delta R.T. 0.000 min
 Lab File: VX040622.D
 Acq: 08 Mar 2024 11:06

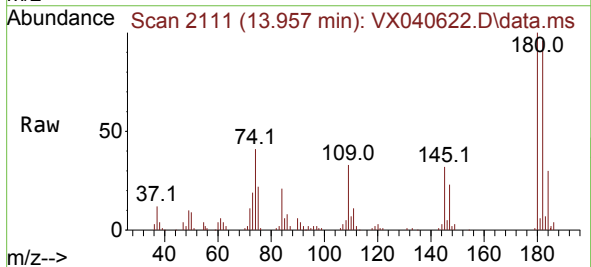
Instrument :
 MSVOA_X
 ClientSampleId :
 VX0309WBSD01



Tgt Ion:128 Resp: 72570
 Ion Ratio Lower Upper
 128 100
 127 13.0 10.2 15.2
 129 11.0 8.6 12.8



#92
 1,2,3-Trichlorobenzene
 Concen: 17.194 ug/l
 RT: 13.957 min Scan# 2111
 Delta R.T. -0.000 min
 Lab File: VX040622.D
 Acq: 08 Mar 2024 11:06



Tgt Ion:180 Resp: 23014
 Ion Ratio Lower Upper
 180 100
 182 95.6 0.0 191.6
 145 34.3 0.0 69.6

