

Data Path : Z:\voasrv\HPCHEM1\MSVOA_X\Data\VX031021\
 Data File : VX021137.D
 Acq On : 10 Mar 2021 15:18
 Operator : JC/MD
 Sample : PB135079TB
 Misc : 5.0mL/MSVOA_X/WATER
 ALS Vial : 14 Sample Multiplier: 1

Instrument :
 MSVOA_X
 ClientSampleId :
 PB135079TB

Quant Time: Mar 11 02:12:36 2021
 Quant Method : Z:\voasrv\HPCHEM1\MSVOA_X\Method\82X022421W.M
 Quant Title : SW846 8260
 QLast Update : Wed Feb 24 13:50:55 2021
 Response via : Initial Calibration

Compound	R.T.	QIon	Response	Conc	Units	Dev(Min)

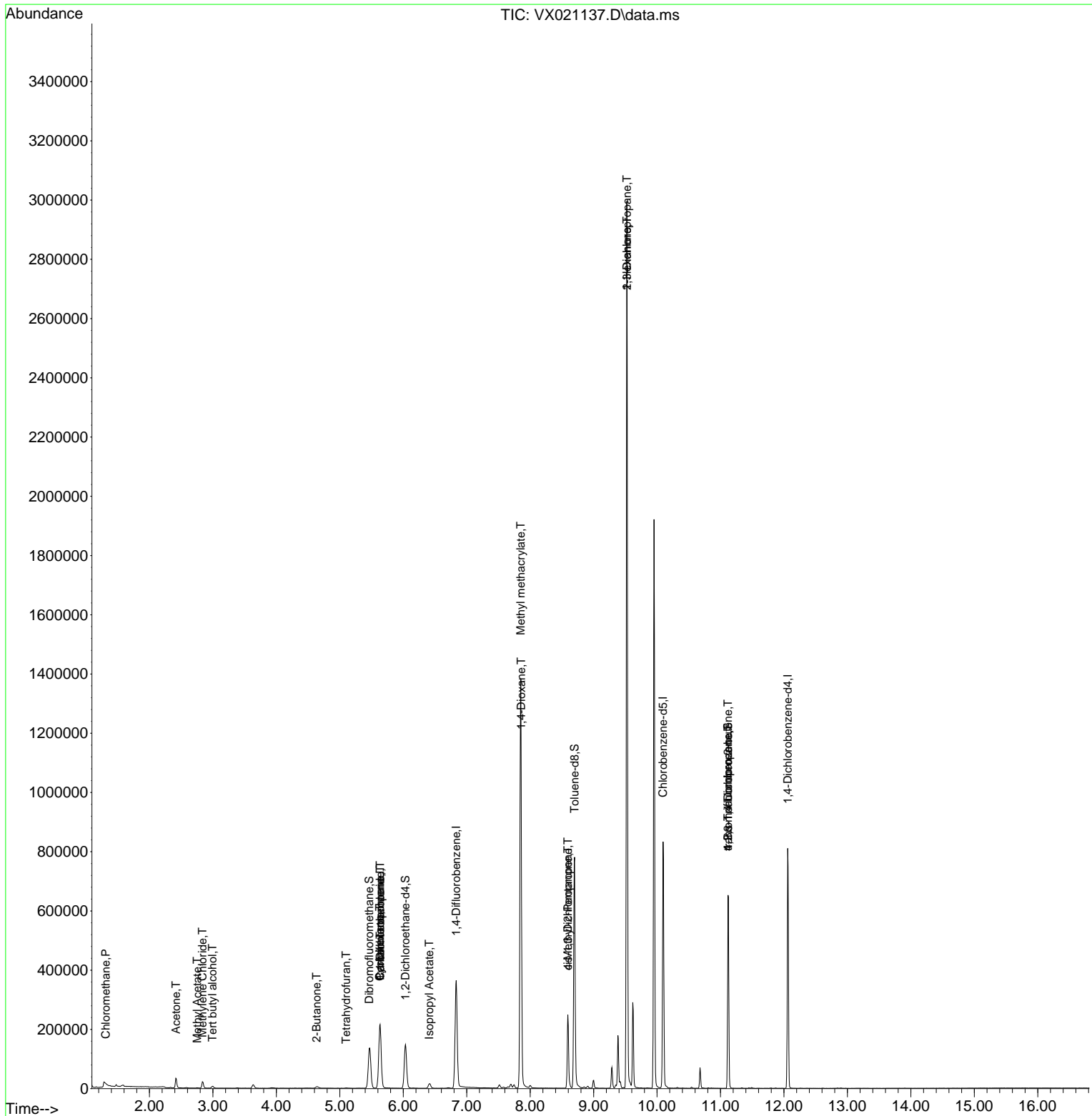
Internal Standards						
1) Pentafluorobenzene	5.635	168	210600	50.00	ug/l	0.01
34) 1,4-Difluorobenzene	6.835	114	375486	50.00	ug/l	0.00
63) Chlorobenzene-d5	10.094	117	394181	50.00	ug/l	0.00
72) 1,4-Dichlorobenzene-d4	12.059	152	168617	50.00	ug/l	0.00
System Monitoring Compounds						
33) 1,2-Dichloroethane-d4	6.035	65	139686	49.10	ug/l	0.00
Spiked Amount	50.000	Range 61 - 141	Recovery	=	98.20%	
35) Dibromofluoromethane	5.464	113	120213	52.69	ug/l	0.00
Spiked Amount	50.000	Range 69 - 133	Recovery	=	105.38%	
50) Toluene-d8	8.700	98	489218	55.00	ug/l	0.00
Spiked Amount	50.000	Range 65 - 126	Recovery	=	110.00%	
62) 4-Bromofluorobenzene	11.118	95	186690	56.76	ug/l	0.00
Spiked Amount	50.000	Range 58 - 135	Recovery	=	113.52%	
Target Compounds						
						Qvalue
3) Chloromethane	1.311	50	1194	0.47	ug/l #	78
5) Bromomethane	1.640	94	353	Below	Cal	92
11) Tert butyl alcohol	2.993	59	3639	5.74	ug/l #	79
16) Acetone	2.417	43	33316	28.42	ug/l	96
18) Methyl Acetate	2.752	43	1378	0.50	ug/l	92
20) Methylene Chloride	2.834	84	10398	3.70	ug/l	92
25) 2-Butanone	4.635	43	6090	3.42	ug/l	91
29) Tetrahydrofuran	5.099	42	824	0.72	ug/l #	60
31) Cyclohexane	5.629	56	4146	1.01	ug/l #	1
36) 1,1-Dichloropropene	5.635	75	15585	4.37	ug/l #	48
38) Carbon Tetrachloride	5.635	117	19618	5.67	ug/l #	16
43) Isopropyl Acetate	6.411	43	21240	3.68	ug/l	97
48) Methyl methacrylate	7.853	41	112956	38.99	ug/l #	36
49) 1,4-Dioxane	7.859	88	186	2.75	ug/l #	1
51) 4-Methyl-2-Pentanone	8.594	43	80706	24.00	ug/l #	46
54) cis-1,3-Dichloropropene	8.594	75	42088	9.11	ug/l #	60
57) 1,3-Dichloropropane	9.524	76	26232	5.81	ug/l #	43
59) 2-Hexanone	9.524	43	318601	126.28	ug/l #	45
76) 1,2,3-Trichloropropane	11.118	75	88583	24.42	ug/l #	39
81) trans-1,4-Dichloro-2-b...	11.118	75	88583	54.07	ug/l #	12

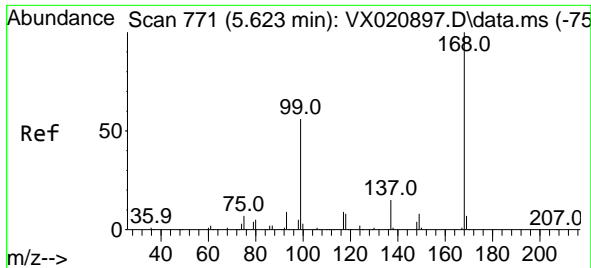
(#) = qualifier out of range (m) = manual integration (+) = signals summed

Data Path : Z:\voasrv\HPCHEM1\MSVOA_X\Data\VX031021\
 Data File : VX021137.D
 Acq On : 10 Mar 2021 15:18
 Operator : JC/MD
 Sample : PB135079TB
 Misc : 5.0mL/MSVOA_X/WATER
 ALS Vial : 14 Sample Multiplier: 1

Instrument :
 MSVOA_X
 ClientSampled :
 PB135079TB

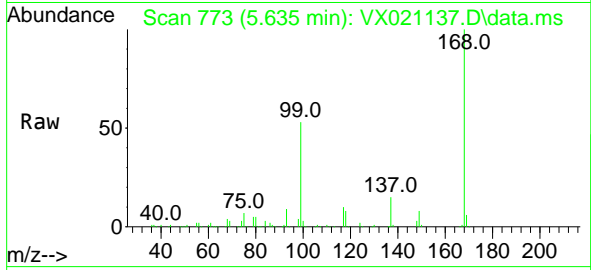
Quant Time: Mar 11 02:12:36 2021
 Quant Method : Z:\voasrv\HPCHEM1\MSVOA_X\Method\82X022421W.M
 Quant Title : SW846 8260
 QLast Update : Wed Feb 24 13:50:55 2021
 Response via : Initial Calibration



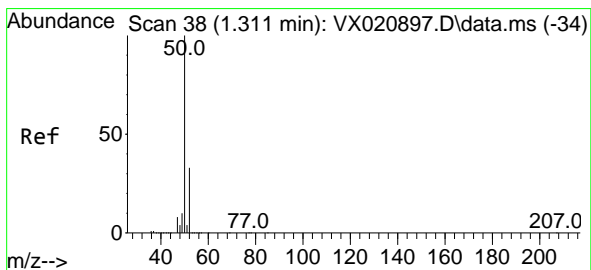
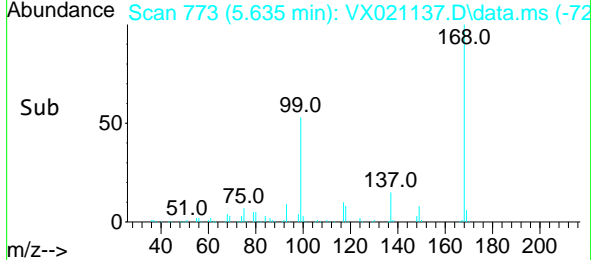
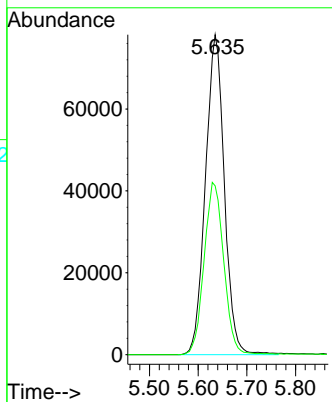


#1
 Pentafluorobenzene
 Concen: 50.00 ug/l
 RT: 5.635 min Scan# 773
 Delta R.T. 0.012 min
 Lab File: VX021137.D
 Acq: 10 Mar 2021 15:18

Instrument :
 MSVOA_X
 ClientSampled :
 PB135079TB

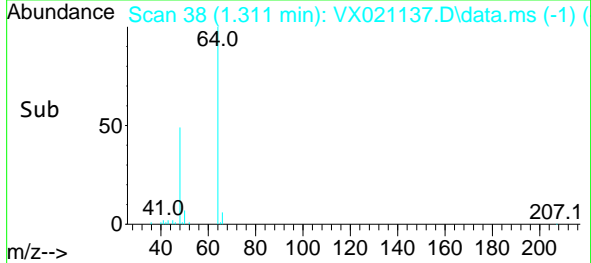
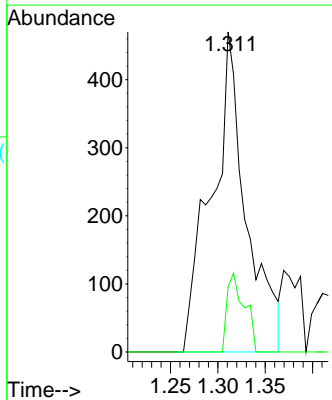
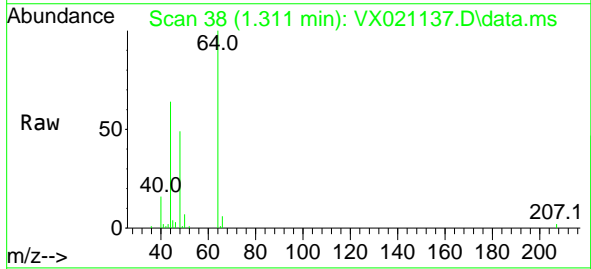


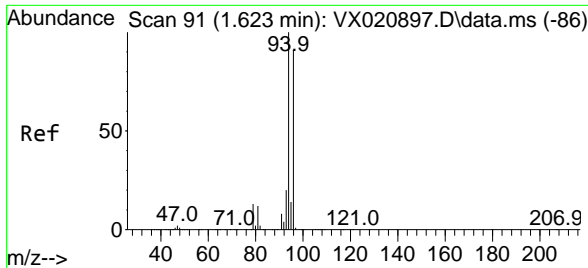
Tgt Ion:168 Resp: 210600
 Ion Ratio Lower Upper
 168 100
 99 52.7 45.8 68.6



#3
 Chloromethane
 Concen: 0.47 ug/l
 RT: 1.311 min Scan# 38
 Delta R.T. -0.000 min
 Lab File: VX021137.D
 Acq: 10 Mar 2021 15:18

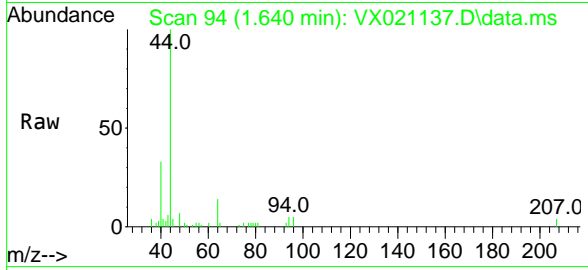
Tgt Ion: 50 Resp: 1194
 Ion Ratio Lower Upper
 50 100
 52 20.4 26.4 39.6#



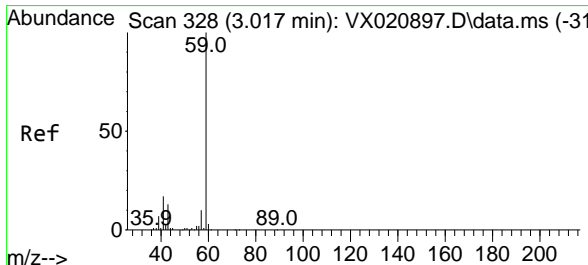
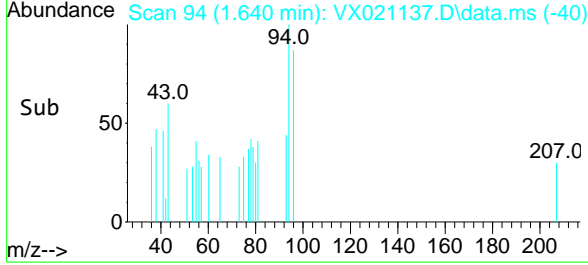
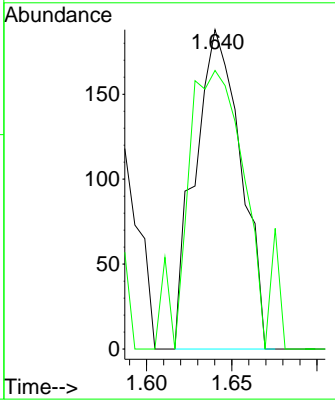


#5
 Bromomethane
 Concen: Below Cal
 RT: 1.640 min Scan# 94
 Delta R.T. 0.017 min
 Lab File: VX021137.D
 Acq: 10 Mar 2021 15:18

Instrument :
 MSVOA_X
 ClientSampled :
 PB135079TB

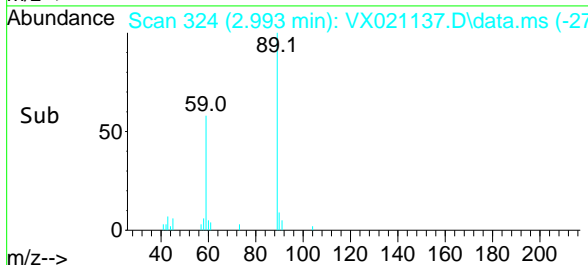
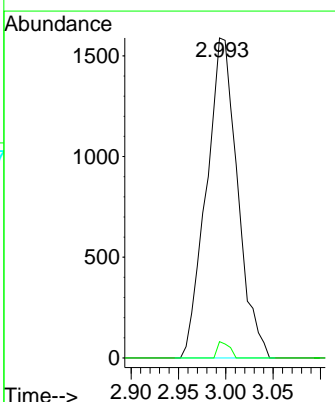
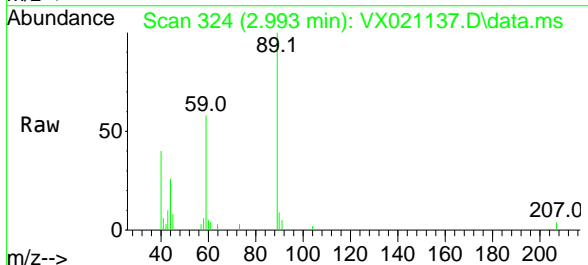


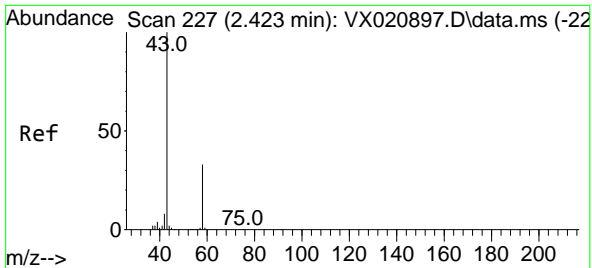
Tgt Ion: 94 Resp: 353
 Ion Ratio Lower Upper
 94 100
 96 87.2 76.4 114.6



#11
 Tert butyl alcohol
 Concen: 5.74 ug/l
 RT: 2.993 min Scan# 324
 Delta R.T. -0.024 min
 Lab File: VX021137.D
 Acq: 10 Mar 2021 15:18

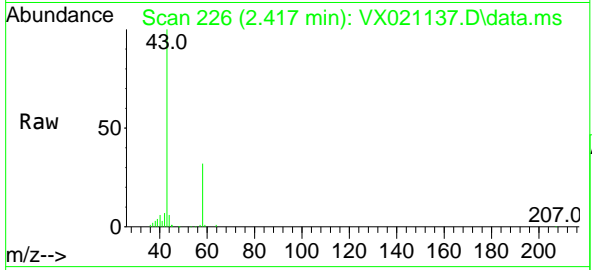
Tgt Ion: 59 Resp: 3639
 Ion Ratio Lower Upper
 59 100
 57 2.0 7.8 11.8#



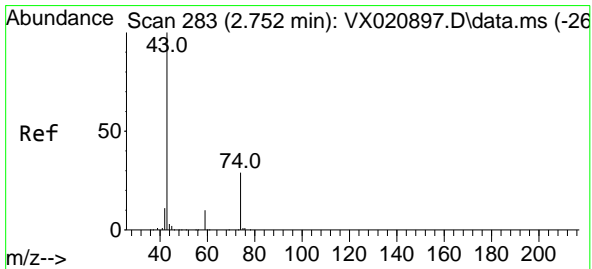
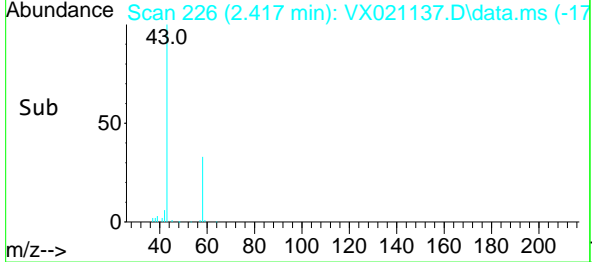
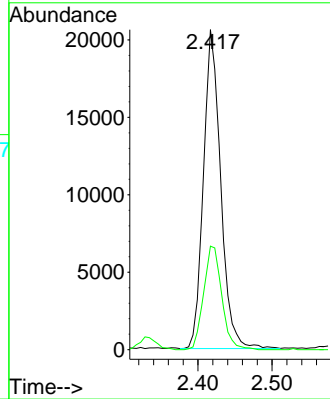


#16
 Acetone
 Concen: 28.42 ug/l
 RT: 2.417 min Scan# 226
 Delta R.T. -0.006 min
 Lab File: VX021137.D
 Acq: 10 Mar 2021 15:18

Instrument :
 MSVOA_X
ClientSampled :
 PB135079TB

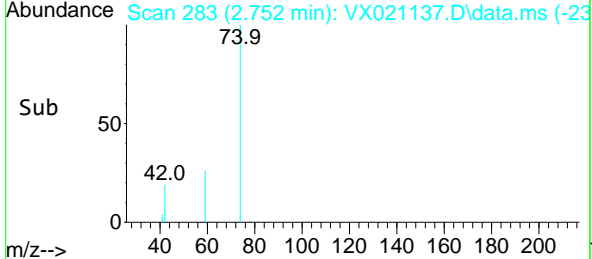
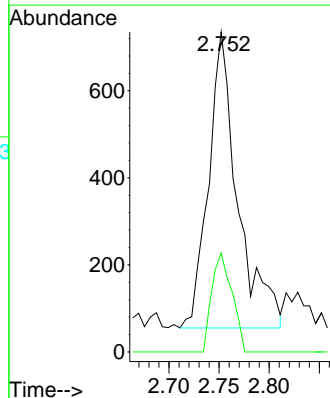
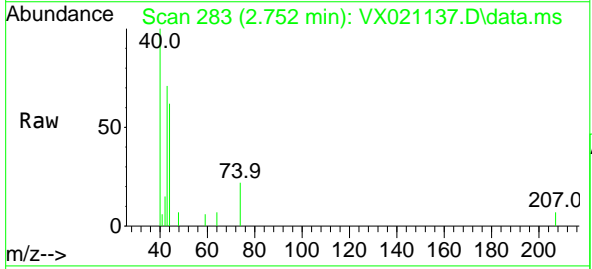


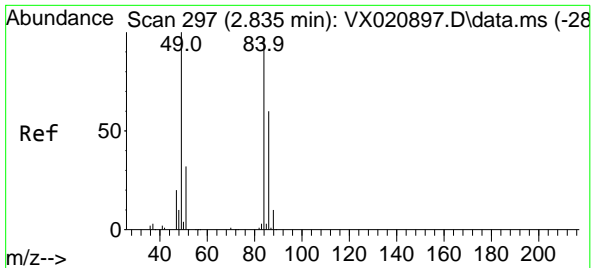
Tgt Ion: 43 Resp: 33316
 Ion Ratio Lower Upper
 43 100
 58 32.5 27.8 41.8



#18
 Methyl Acetate
 Concen: 0.50 ug/l
 RT: 2.752 min Scan# 283
 Delta R.T. -0.000 min
 Lab File: VX021137.D
 Acq: 10 Mar 2021 15:18

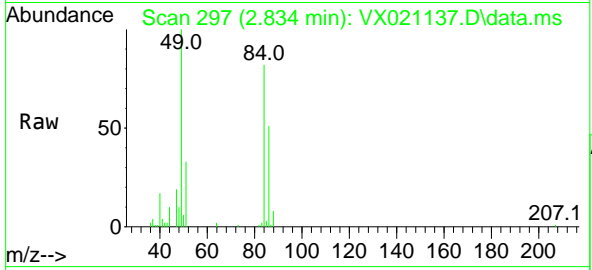
Tgt Ion: 43 Resp: 1378
 Ion Ratio Lower Upper
 43 100
 74 23.1 21.9 32.9





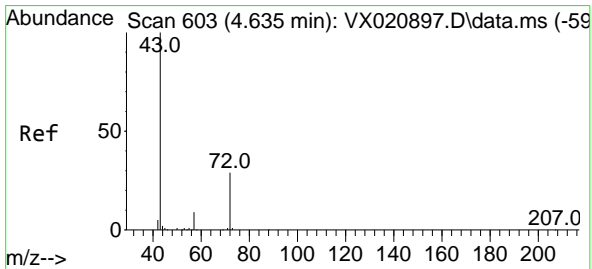
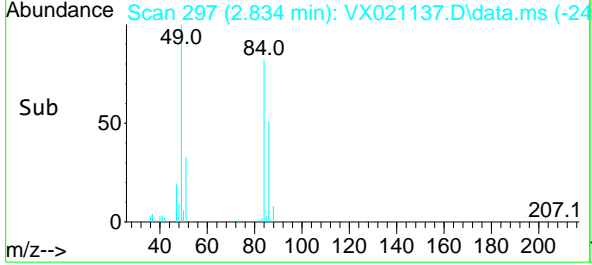
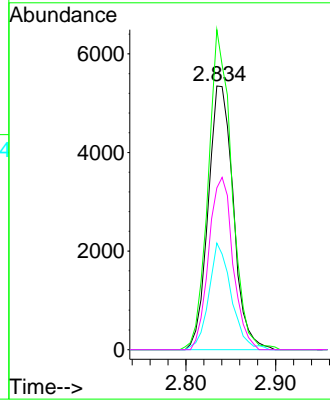
#20
 Methylene Chloride
 Concen: 3.70 ug/l
 RT: 2.834 min Scan# 297
 Delta R.T. -0.000 min
 Lab File: VX021137.D
 Acq: 10 Mar 2021 15:18

Instrument :
 MSVOA_X
 ClientSampled :
 PB135079TB

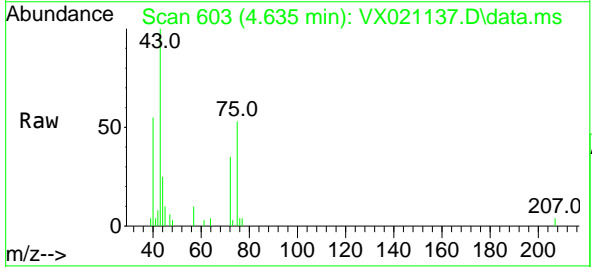


Tgt Ion: 84 Resp: 10398

Ion	Ratio	Lower	Upper
84	100		
49	121.3	88.6	132.8
51	40.4	27.0	40.6
86	61.3	50.3	75.5

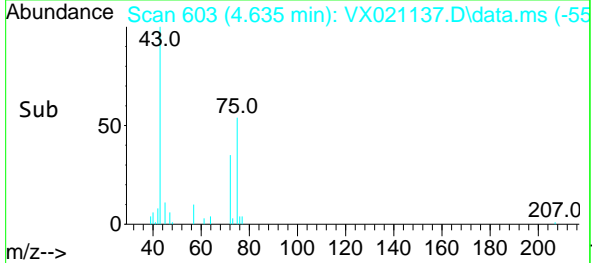
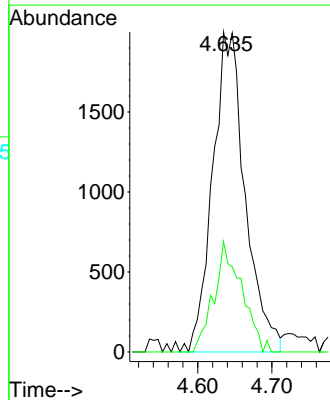


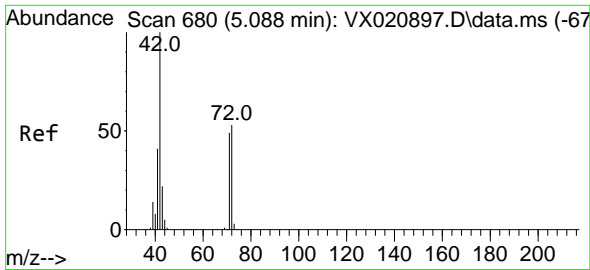
#25
 2-Butanone
 Concen: 3.42 ug/l
 RT: 4.635 min Scan# 603
 Delta R.T. -0.000 min
 Lab File: VX021137.D
 Acq: 10 Mar 2021 15:18



Tgt Ion: 43 Resp: 6090

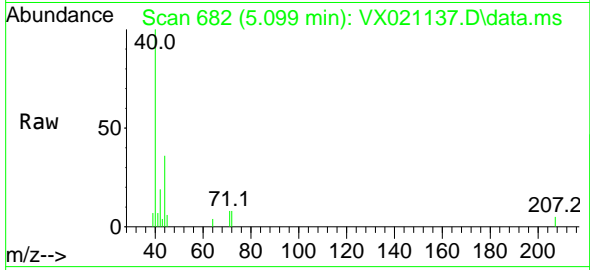
Ion	Ratio	Lower	Upper
43	100		
72	34.5	23.7	35.5





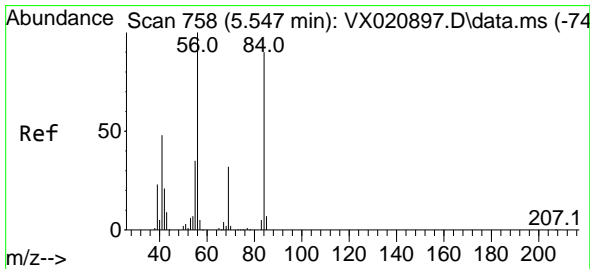
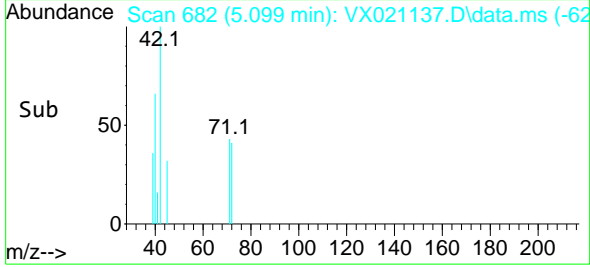
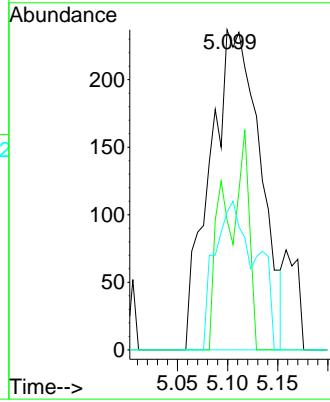
#29
 Tetrahydrofuran
 Concen: 0.72 ug/l
 RT: 5.099 min Scan# 682
 Delta R.T. 0.012 min
 Lab File: VX021137.D
 Acq: 10 Mar 2021 15:18

Instrument :
 MSVOA_X
 ClientSampled :
 PB135079TB

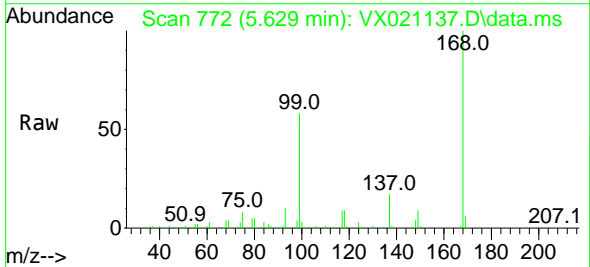


Tgt Ion: 42 Resp: 824

Ion	Ratio	Lower	Upper
42	100		
72	16.9	41.7	62.5#
71	28.9	38.4	57.6#

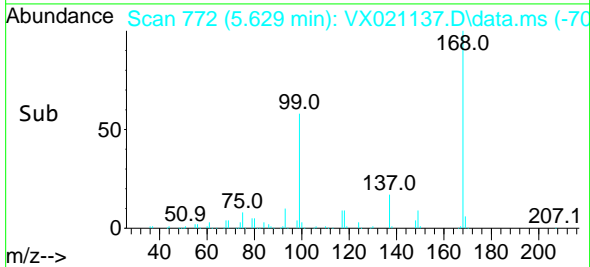
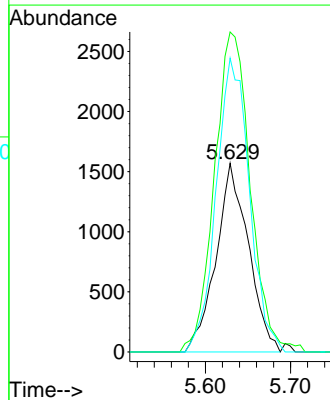


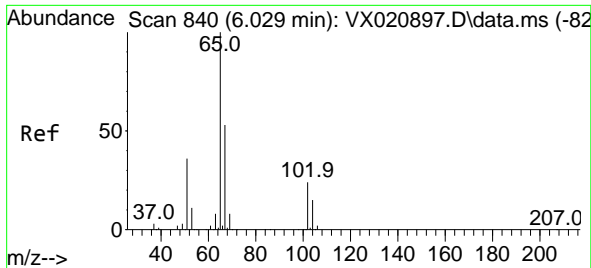
#31
 Cyclohexane
 Concen: 1.01 ug/l
 RT: 5.629 min Scan# 772
 Delta R.T. 0.082 min
 Lab File: VX021137.D
 Acq: 10 Mar 2021 15:18



Tgt Ion: 56 Resp: 4146

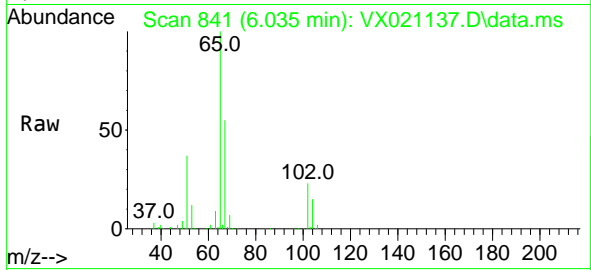
Ion	Ratio	Lower	Upper
56	100		
69	169.7	25.3	37.9#
84	155.8	71.4	107.0#



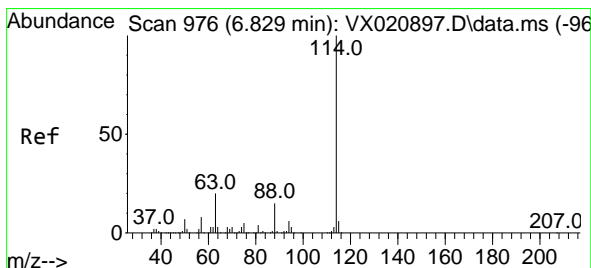
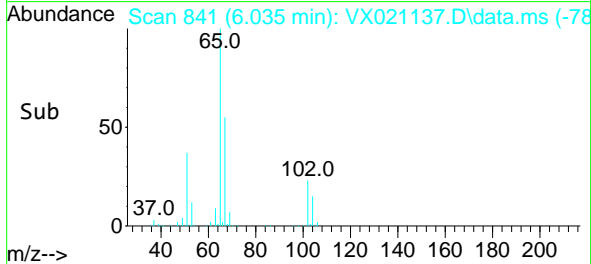
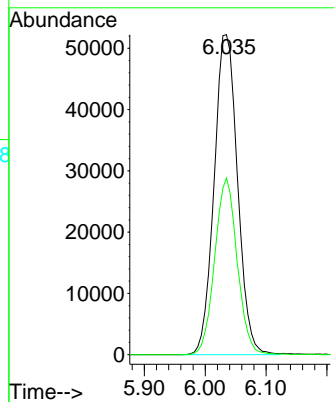


#33
 1,2-Dichloroethane-d4
 Concen: 49.10 ug/l
 RT: 6.035 min Scan# 841
 Delta R.T. 0.006 min
 Lab File: VX021137.D
 Acq: 10 Mar 2021 15:18

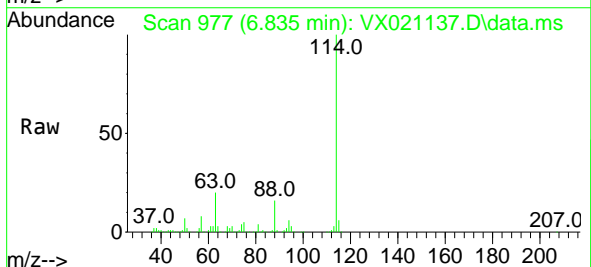
Instrument :
 MSVOA_X
 ClientSampled :
 PB135079TB



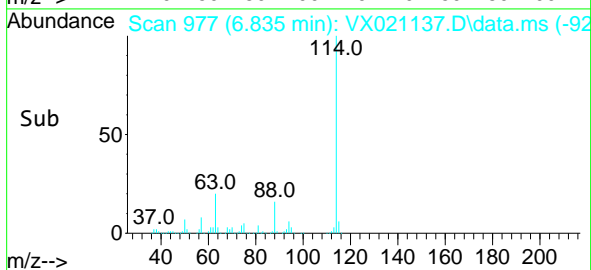
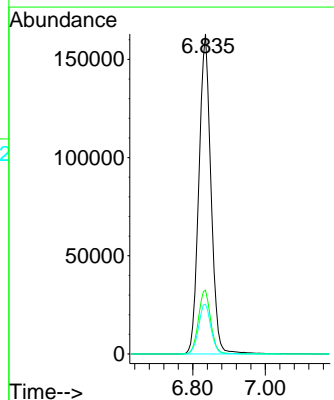
Tgt Ion: 65 Resp: 139686
 Ion Ratio Lower Upper
 65 100
 67 52.9 0.0 105.4

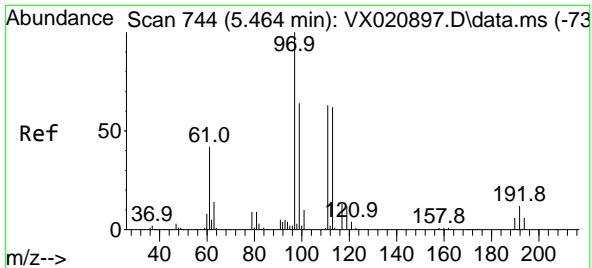


#34
 1,4-Difluorobenzene
 Concen: 50.00 ug/l
 RT: 6.835 min Scan# 977
 Delta R.T. 0.006 min
 Lab File: VX021137.D
 Acq: 10 Mar 2021 15:18



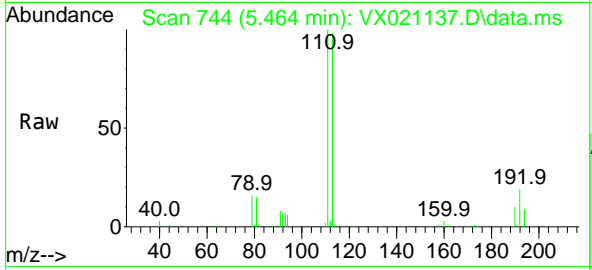
Tgt Ion: 114 Resp: 375486
 Ion Ratio Lower Upper
 114 100
 63 19.9 0.0 40.8
 88 15.6 0.0 32.8



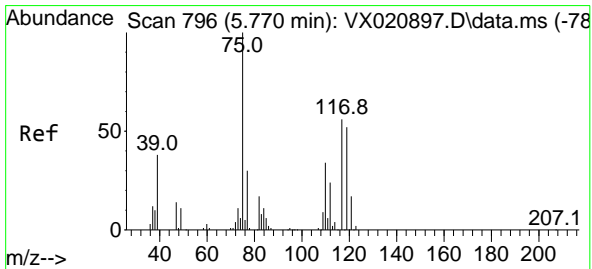
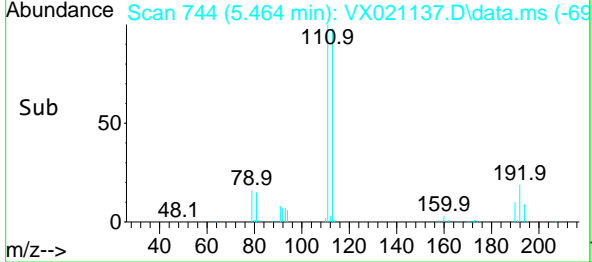
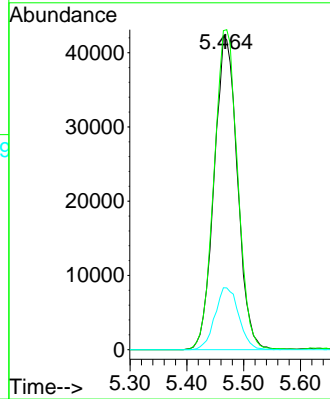


#35
 Dibromofluoromethane
 Concen: 52.69 ug/l
 RT: 5.464 min Scan# 744
 Delta R.T. -0.000 min
 Lab File: VX021137.D
 Acq: 10 Mar 2021 15:18

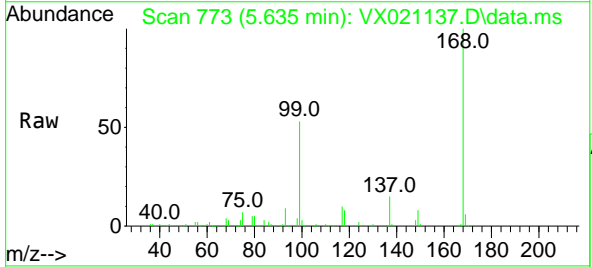
Instrument :
 MSVOA_X
 ClientSampled :
 PB135079TB



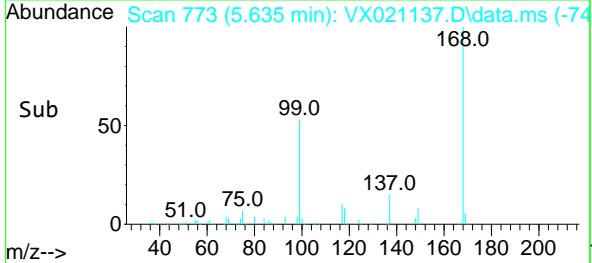
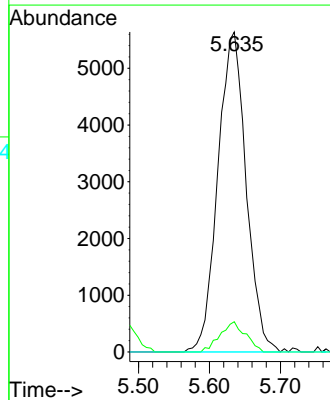
Tgt Ion:113 Resp: 120213
 Ion Ratio Lower Upper
 113 100
 111 103.4 81.9 122.9
 192 20.2 16.7 25.1

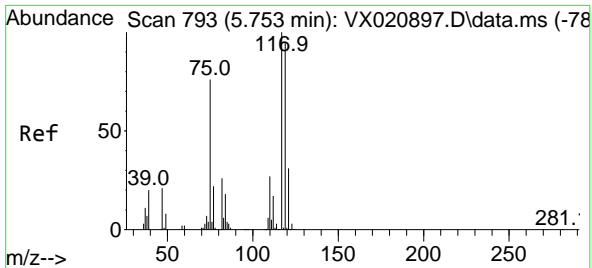


#36
 1,1-Dichloropropene
 Concen: 4.37 ug/l
 RT: 5.635 min Scan# 773
 Delta R.T. -0.135 min
 Lab File: VX021137.D
 Acq: 10 Mar 2021 15:18



Tgt Ion: 75 Resp: 15585
 Ion Ratio Lower Upper
 75 100
 110 8.5 18.1 54.4#
 77 0.0 25.3 37.9#

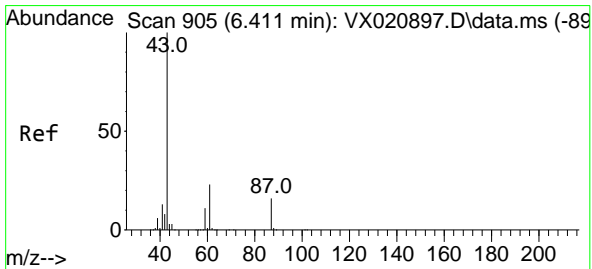
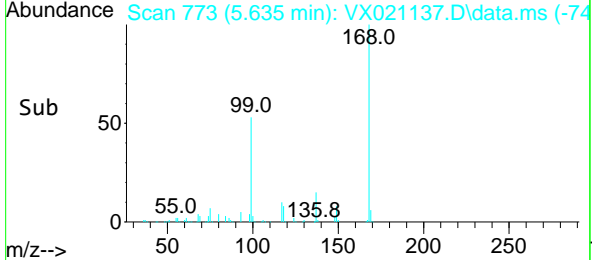
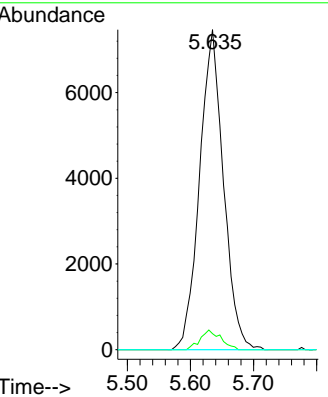
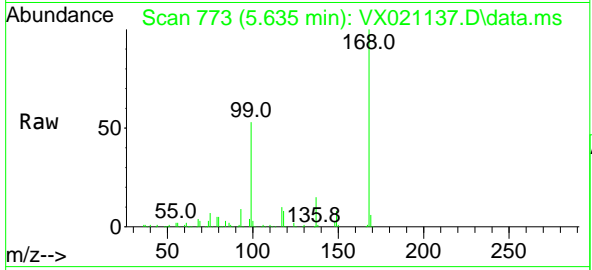




#38
 Carbon Tetrachloride
 Concen: 5.67 ug/l
 RT: 5.635 min Scan# 773
 Delta R.T. -0.118 min
 Lab File: VX021137.D
 Acq: 10 Mar 2021 15:18

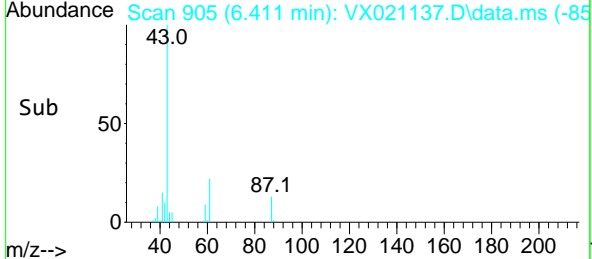
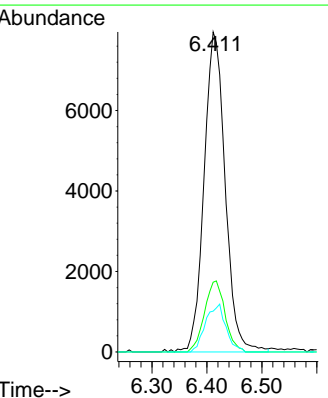
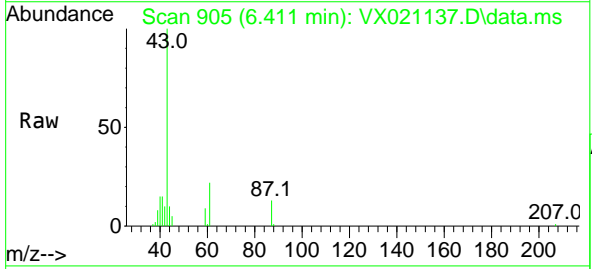
Instrument :
 MSVOA_X
 ClientSampled :
 PB135079TB

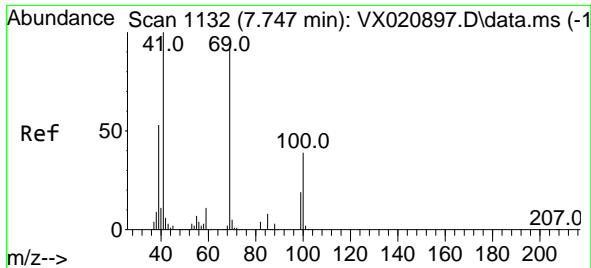
Tgt Ion	Resp	Lower	Upper
117	19618		
117	100		
119	5.0	76.2	114.2#
121	0.0	24.8	37.2#



#43
 Isopropyl Acetate
 Concen: 3.68 ug/l
 RT: 6.411 min Scan# 905
 Delta R.T. -0.000 min
 Lab File: VX021137.D
 Acq: 10 Mar 2021 15:18

Tgt Ion	Resp	Lower	Upper
43	21240		
43	100		
61	21.5	18.2	27.4
87	14.4	12.5	18.7

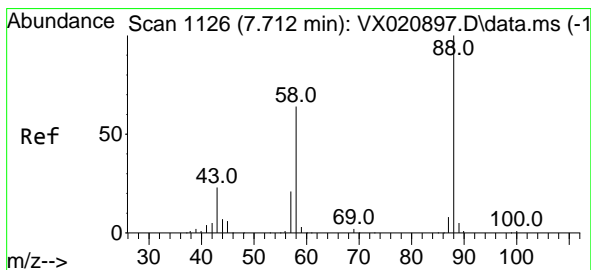
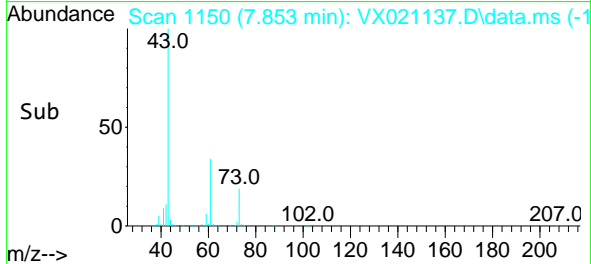
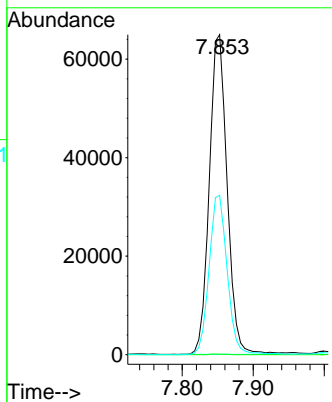
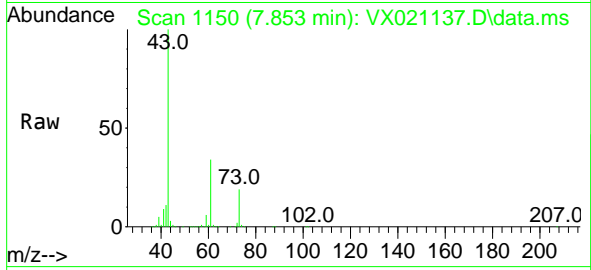




#48
 Methyl methacrylate
 Concen: 38.99 ug/l
 RT: 7.853 min Scan# 1150
 Delta R.T. 0.106 min
 Lab File: VX021137.D
 Acq: 10 Mar 2021 15:18

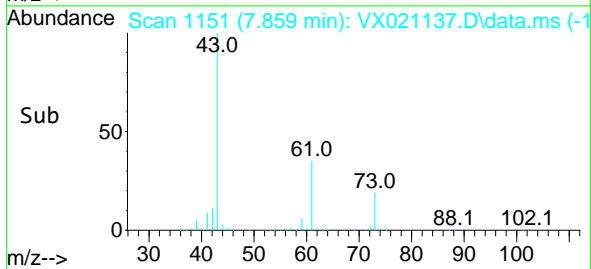
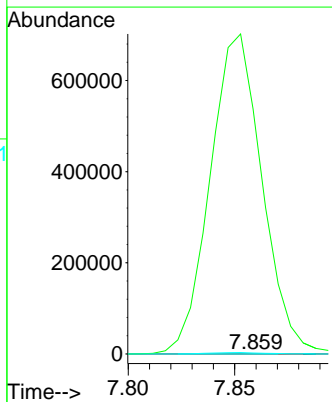
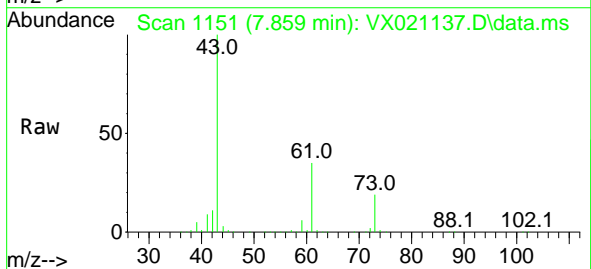
Instrument :
 MSVOA_X
ClientSampled :
 PB135079TB

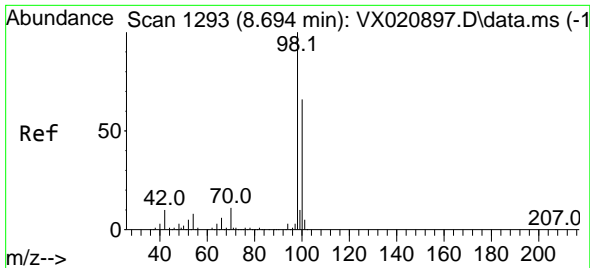
Tgt Ion: 41 Resp: 112956
 Ion Ratio Lower Upper
 41 100
 69 0.2 76.0 114.0#
 39 50.9 44.6 67.0



#49
 1,4-Dioxane
 Concen: 2.75 ug/l
 RT: 7.859 min Scan# 1151
 Delta R.T. 0.147 min
 Lab File: VX021137.D
 Acq: 10 Mar 2021 15:18

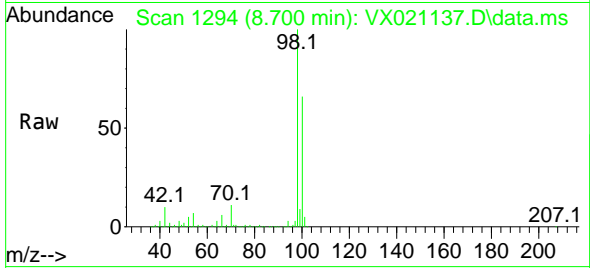
Tgt Ion: 88 Resp: 186
 Ion Ratio Lower Upper
 88 100
 43 648266.1 23.2 34.8#
 58 2986.0 55.0 82.4#



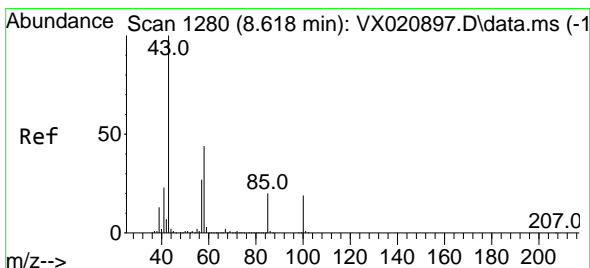
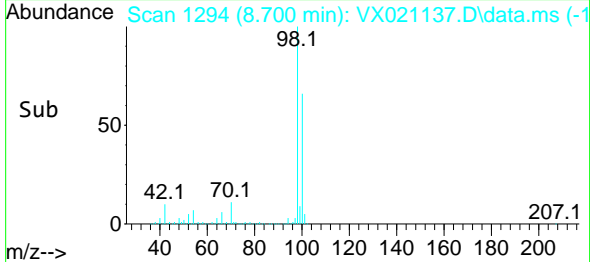
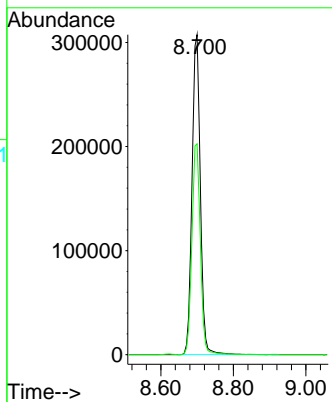


#50
 Toluene-d8
 Concen: 55.00 ug/l
 RT: 8.700 min Scan# 1294
 Delta R.T. 0.006 min
 Lab File: VX021137.D
 Acq: 10 Mar 2021 15:18

Instrument :
 MSVOA_X
 ClientSampled :
 PB135079TB

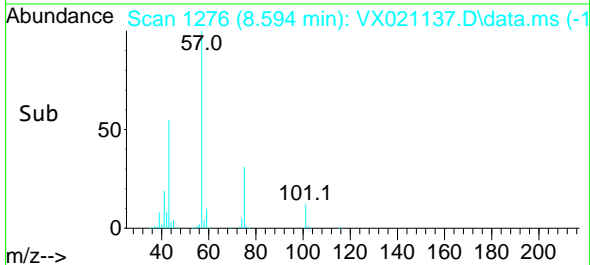
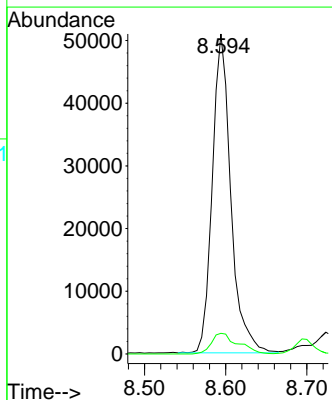
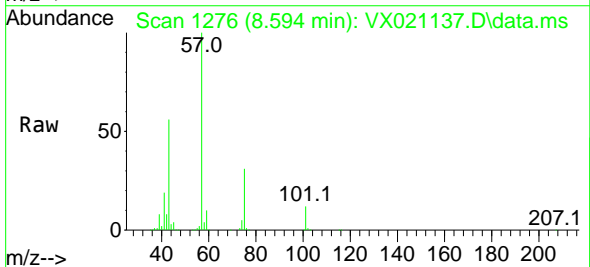


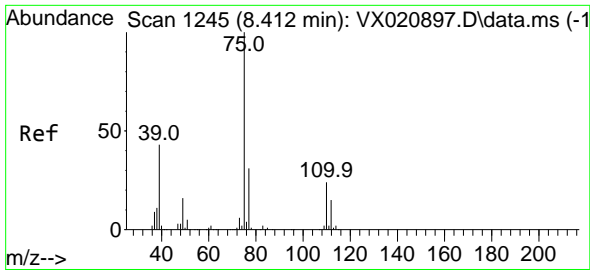
Tgt Ion: 98 Resp: 489218
 Ion Ratio Lower Upper
 98 100
 100 67.0 51.9 77.9



#51
 4-Methyl-2-Pentanone
 Concen: 24.00 ug/l
 RT: 8.594 min Scan# 1276
 Delta R.T. -0.024 min
 Lab File: VX021137.D
 Acq: 10 Mar 2021 15:18

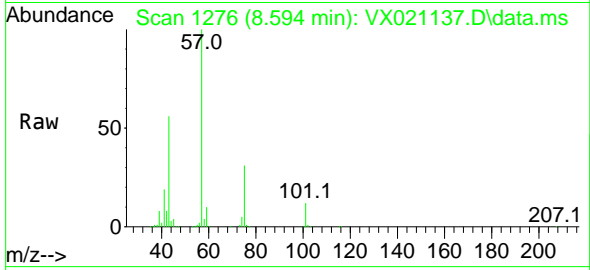
Tgt Ion: 43 Resp: 80706
 Ion Ratio Lower Upper
 43 100
 58 9.4 35.4 53.0#



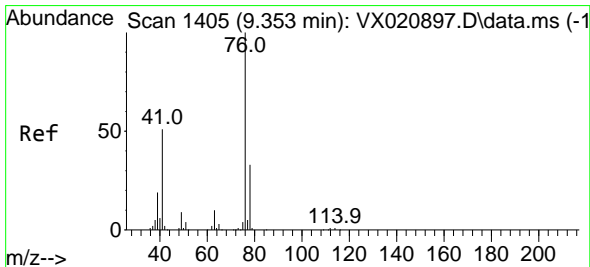
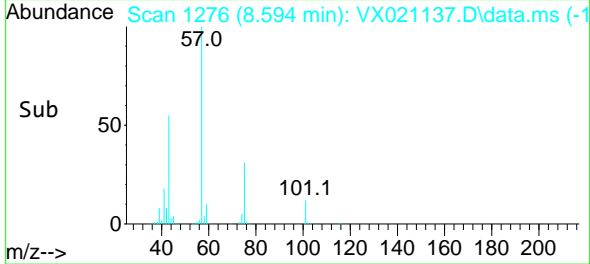
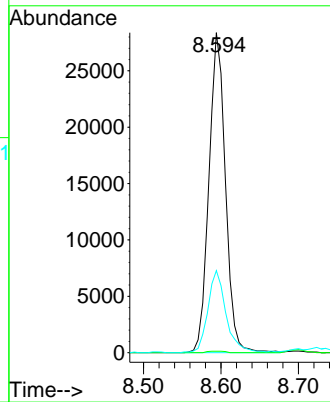


#54
 cis-1,3-Dichloropropene
 Concen: 9.11 ug/l
 RT: 8.594 min Scan# 1276
 Delta R.T. 0.182 min
 Lab File: VX021137.D
 Acq: 10 Mar 2021 15:18

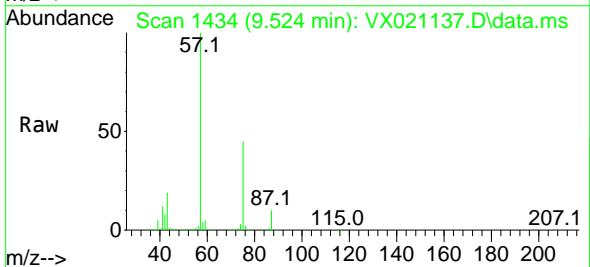
Instrument :
 MSVOA_X
 ClientSampled :
 PB135079TB



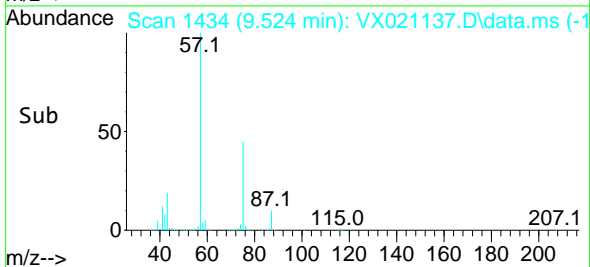
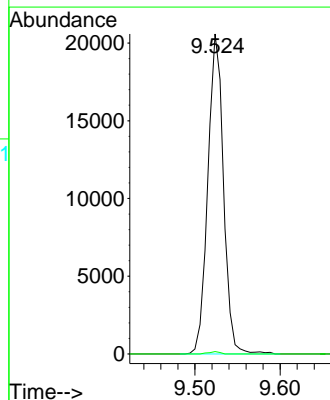
Tgt Ion: 75 Resp: 42088
 Ion Ratio Lower Upper
 75 100
 77 0.4 25.7 38.5#
 39 25.7 35.1 52.7#

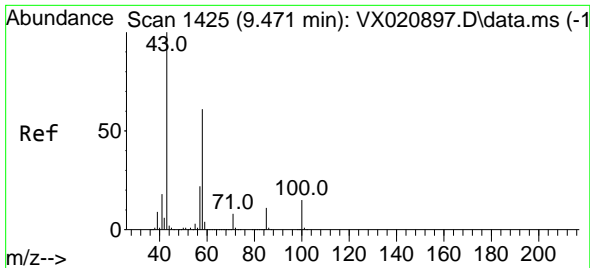


#57
 1,3-Dichloropropane
 Concen: 5.81 ug/l
 RT: 9.524 min Scan# 1434
 Delta R.T. 0.171 min
 Lab File: VX021137.D
 Acq: 10 Mar 2021 15:18



Tgt Ion: 76 Resp: 26232
 Ion Ratio Lower Upper
 76 100
 78 0.5 26.2 39.2#

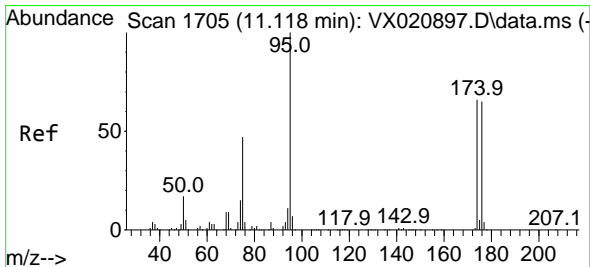
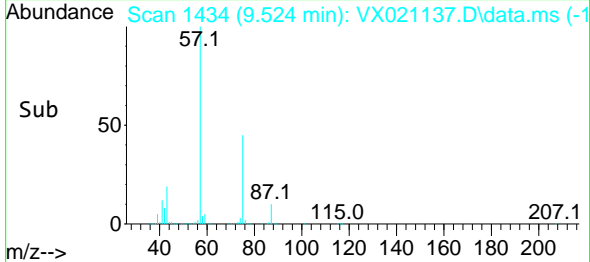
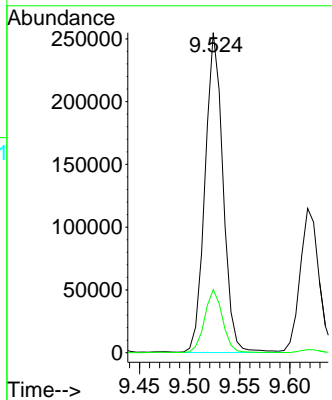
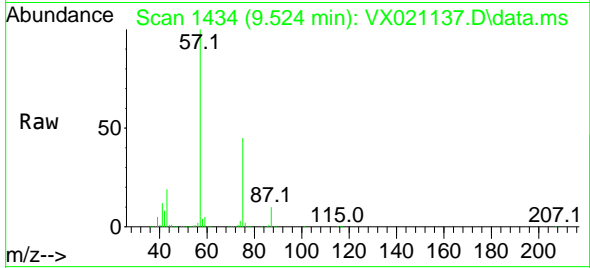




#59
 2-Hexanone
 Concen: 126.28 ug/l
 RT: 9.524 min Scan# 1434
 Delta R.T. 0.053 min
 Lab File: VX021137.D
 Acq: 10 Mar 2021 15:18

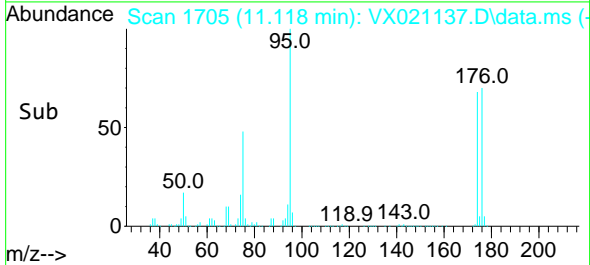
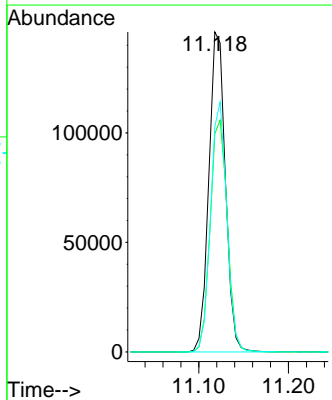
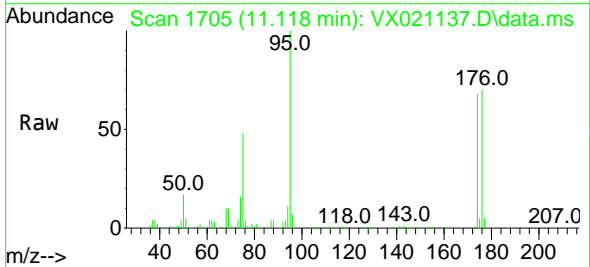
Instrument :
 MSVOA_X
 ClientSampled :
 PB135079TB

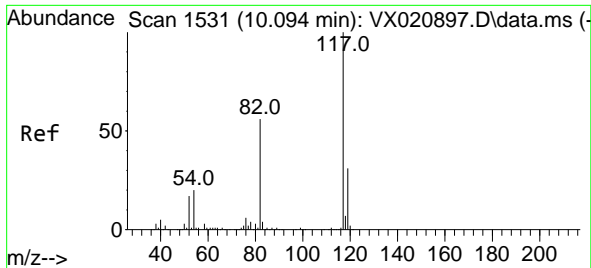
Tgt Ion: 43 Resp: 318601
 Ion Ratio Lower Upper
 43 100
 58 19.6 30.9 92.8#



#62
 4-Bromofluorobenzene
 Concen: 56.76 ug/l
 RT: 11.118 min Scan# 1705
 Delta R.T. -0.000 min
 Lab File: VX021137.D
 Acq: 10 Mar 2021 15:18

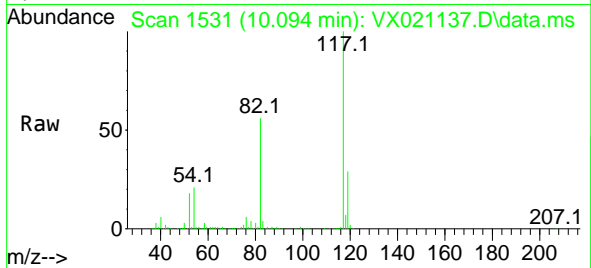
Tgt Ion: 95 Resp: 186690
 Ion Ratio Lower Upper
 95 100
 174 75.3 0.0 154.6
 176 76.7 0.0 155.8



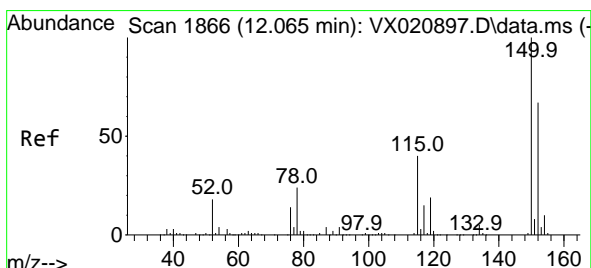
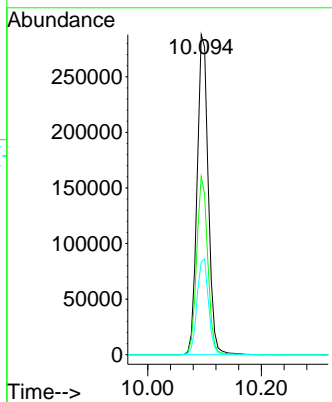
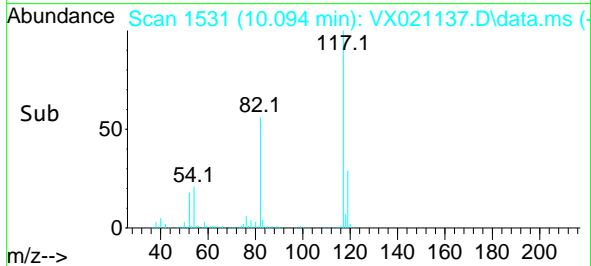


#63
 Chlorobenzene-d5
 Concen: 50.00 ug/l
 RT: 10.094 min Scan# 1531
 Delta R.T. -0.000 min
 Lab File: VX021137.D
 Acq: 10 Mar 2021 15:18

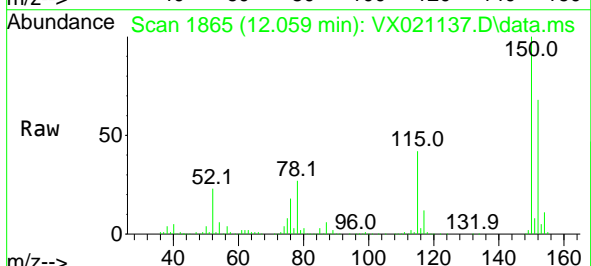
Instrument :
 MSVOA_X
 ClientSampled :
 PB135079TB



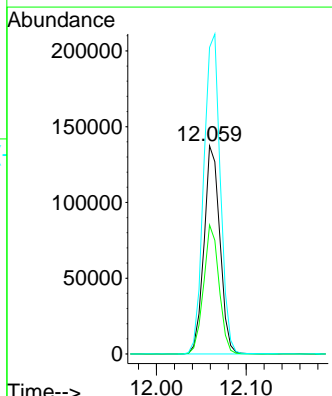
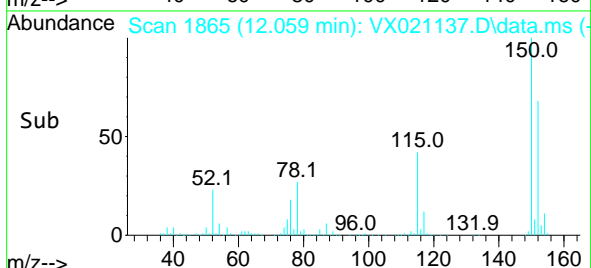
Tgt Ion:117 Resp: 394181
 Ion Ratio Lower Upper
 117 100
 82 55.8 47.4 71.2
 119 29.0 26.6 39.8

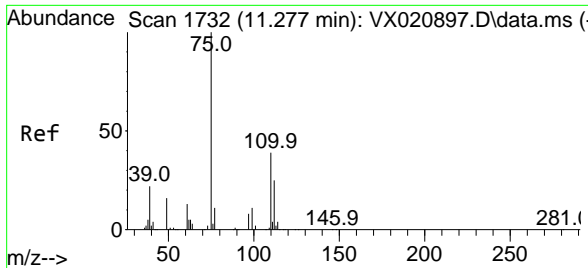


#72
 1,4-Dichlorobenzene-d4
 Concen: 50.00 ug/l
 RT: 12.059 min Scan# 1865
 Delta R.T. -0.006 min
 Lab File: VX021137.D
 Acq: 10 Mar 2021 15:18



Tgt Ion:152 Resp: 168617
 Ion Ratio Lower Upper
 152 100
 115 60.3 41.1 123.3
 150 160.3 0.0 349.0

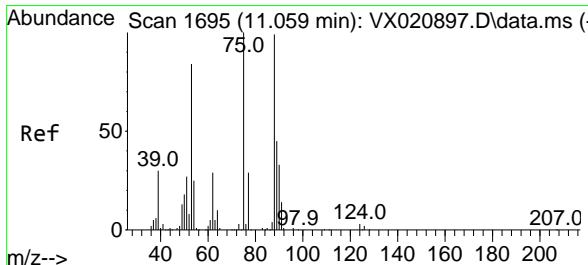
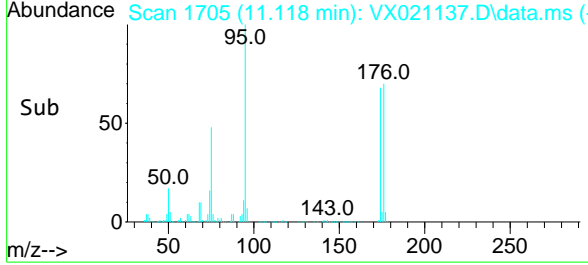
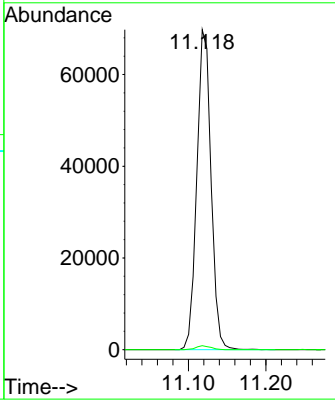
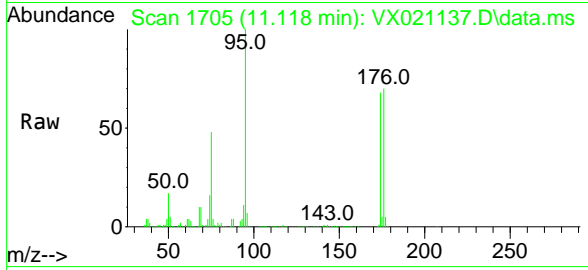




#76
 1,2,3-Trichloropropane
 Concen: 24.42 ug/l
 RT: 11.118 min Scan# 1705
 Delta R.T. -0.159 min
 Lab File: VX021137.D
 Acq: 10 Mar 2021 15:18

Instrument :
 MSVOA_X
ClientSampled :
 PB135079TB

Tgt Ion: 75 Resp: 88583
 Ion Ratio Lower Upper
 75 100
 77 1.3 19.1 57.5#



#81
 trans-1,4-Dichloro-2-butene
 Concen: 54.07 ug/l
 RT: 11.118 min Scan# 1705
 Delta R.T. 0.059 min
 Lab File: VX021137.D
 Acq: 10 Mar 2021 15:18

Tgt Ion: 75 Resp: 88583
 Ion Ratio Lower Upper
 75 100
 53 0.0 74.5 111.7#
 89 0.0 37.9 56.9#

