

Data Path : Z:\VOASRV\HPCHEM1\MSVOA X\DATA\VX031119\
 Data File : VX007987.D
 Acq On : 11 Mar 2019 22:56
 Operator : JC/SP
 Sample : K1841-11
 Misc : 5.0mL/MSVOA X/WATER
 ALS Vial : 29 Sample Multiplier: 1

Instrument :
 MSVOA_X
 ClientSampleId :
 RE103D3-20190308

Quant Time: Mar 12 08:43:06 2019
 Quant Method : Z:\VOASRV\HPCHEM1\MSVOA_X\METHOD\82X030619W.M
 Quant Title : SW846 8260
 QLast Update : Thu Mar 07 07:33:26 2019
 Response via : Initial Calibration

Internal Standards	R.T.	QIon	Response	Conc	Units	Dev(Min)
1) Pentafluorobenzene	5.67	168	249929	50.00	ug/l	0.00
34) 1,4-Difluorobenzene	6.86	114	392245	50.00	ug/l	0.00
63) Chlorobenzene-d5	10.11	117	366849	50.00	ug/l	0.00
72) 1,4-Dichlorobenzene-d4	12.08	152	175565	50.00	ug/l	0.00

System Monitoring Compounds

33) 1,2-Dichloroethane-d4	6.07	65	137621	52.20	ug/l	0.00
Spiked Amount	50.000		Recovery	=	104.40%	
35) Dibromofluoromethane	5.50	113	126715	50.50	ug/l	0.00
Spiked Amount	50.000		Recovery	=	101.00%	
50) Toluene-d8	8.71	98	472133	51.24	ug/l	0.00
Spiked Amount	50.000		Recovery	=	102.48%	
62) 4-Bromofluorobenzene	11.13	95	172159	53.29	ug/l	0.00
Spiked Amount	50.000		Recovery	=	106.58%	

Target Compounds

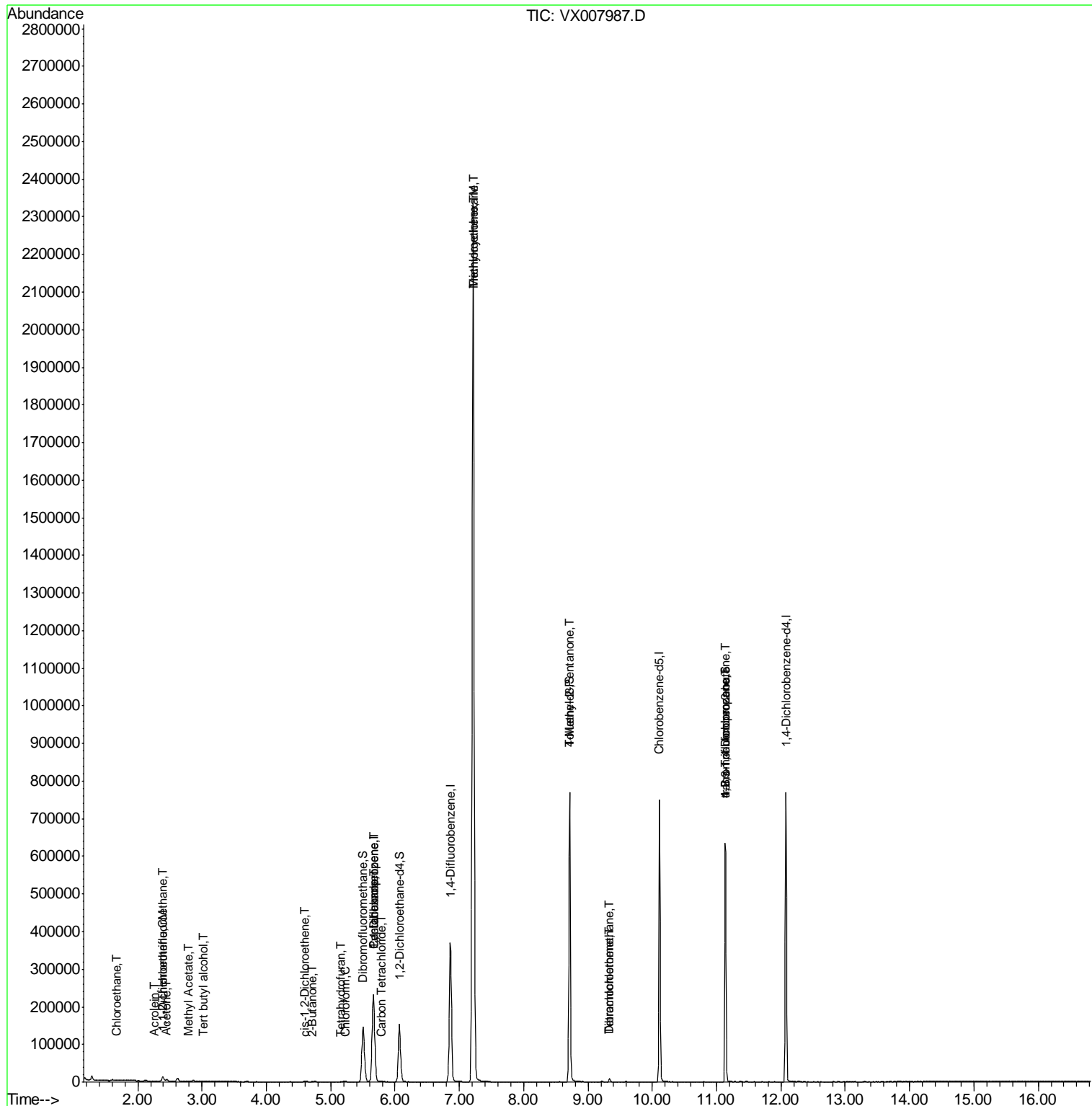
					Qvalue
5) Bromomethane	1.65	94	149	Below Cal	100
6) Chloroethane	1.67	64	2794	1.538 ug/l #	60
9) 1,1,2-Trichlorotrifluoroet	2.39	101	4619	2.094 ug/l	97
11) Tert butyl alcohol	3.02	59	872	1.479 ug/l #	73
12) 1,1-Dichloroethene	2.39	96	630	0.296 ug/l #	91
13) Acrolein	2.26	56	23	1.610 ug/l #	1
16) Acetone	2.45	43	4429	2.902 ug/l	96
17) Carbon Disulfide	2.57	76	440	Below Cal #	76
18) Methyl Acetate	2.78	43	837	0.258 ug/l #	84
25) 2-Butanone	4.71	43	457	0.212 ug/l #	50
27) cis-1,2-Dichloroethene	4.59	96	1475	0.551 ug/l	89
29) Tetrahydrofuran	5.16	42	322	0.239 ug/l #	41
30) Chloroform	5.22	83	1445	0.347 ug/l	98
31) Cyclohexane	5.67	56	3554	0.877 ug/l #	1
36) 1,1-Dichloropropene	5.67	75	15058	4.240 ug/l #	49
38) Carbon Tetrachloride	5.79	117	805	0.239 ug/l	93
39) Methylcyclohexane	7.21	83	10257	2.383 ug/l #	1
44) Trichloroethene	7.21	130	959590	329.316 ug/l	99
51) 4-Methyl-2-Pentanone	8.71	43	1910	0.476 ug/l #	1
60) Dibromochloromethane	9.34	129	1470	0.538 ug/l #	11
64) Tetrachloroethene	9.34	164	1629	0.536 ug/l	89
76) 1,2,3-Trichloropropane	11.13	75	78129	21.207 ug/l #	39
81) trans-1,4-Dichloro-2-buten	11.13	75	78129	67.789 ug/l #	11

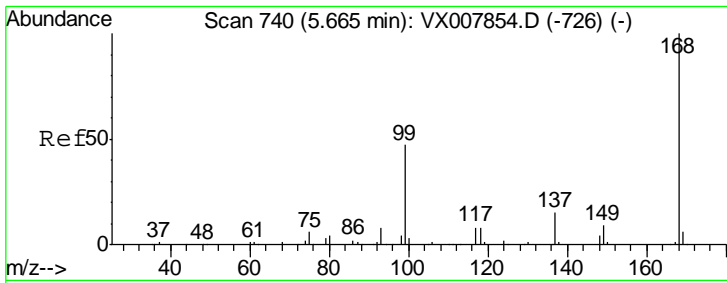
(#) = qualifier out of range (m) = manual integration (+) = signals summed

Data Path : Z:\VOASRV\HPCHEM1\MSVOA X\DATA\VX031119\
 Data File : VX007987.D
 Acq On : 11 Mar 2019 22:56
 Operator : JC/SP
 Sample : K1841-11
 Misc : 5.0mL/MSVOA X/WATER
 ALS Vial : 29 Sample Multiplier: 1

Instrument :
 MSVOA_X
 Client Sampled :
 RE103D3-20190308

Quant Time: Mar 12 08:43:06 2019
 Quant Method : Z:\VOASRV\HPCHEM1\MSVOA_X\METHOD\82X030619W.M
 Quant Title : SW846 8260
 QLast Update : Thu Mar 07 07:33:26 2019
 Response via : Initial Calibration

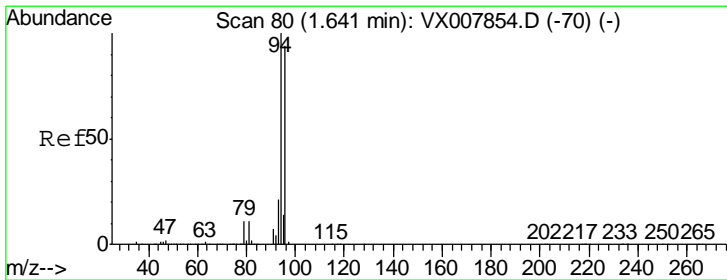
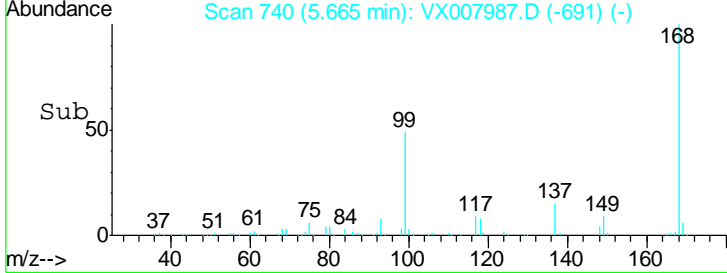
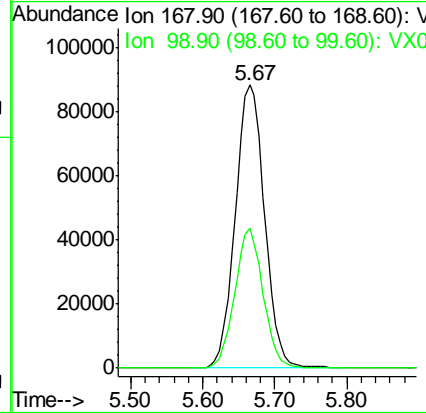
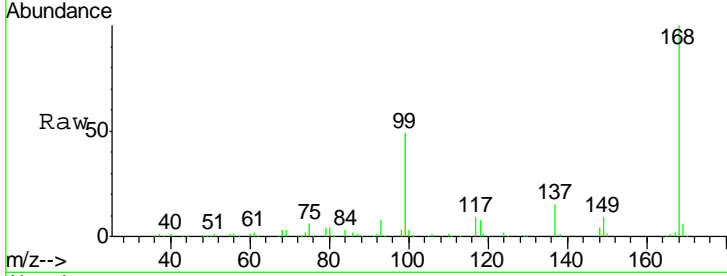




#1
 Pentafluorobenzene
 Concen: 50.000 ug/l
 RT: 5.67 min Scan# 740
 Delta R.T. 0.00 min
 Lab File: VX007987.D
 Acq: 11 Mar 2019 22:56

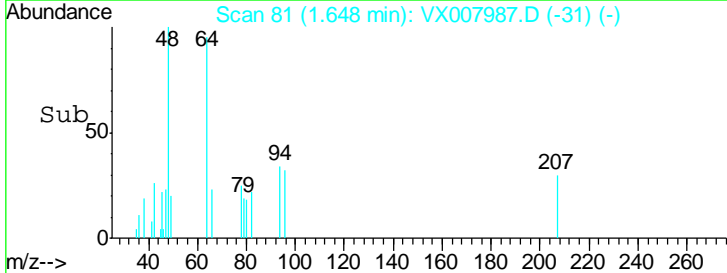
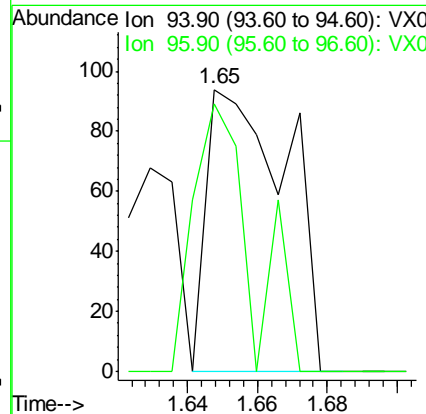
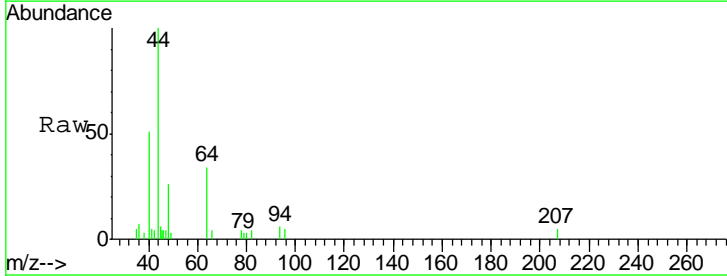
Instrument : MSVOA_X
 ClientSampleId : RE103D3-20190308

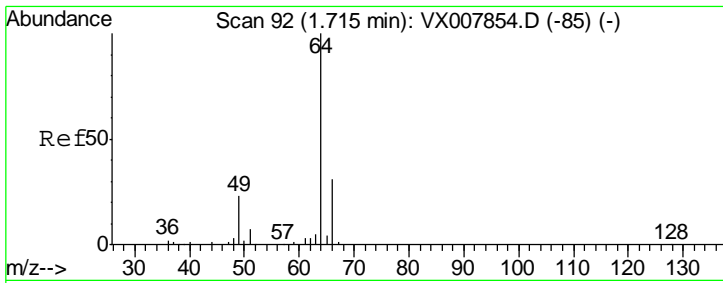
Tot Ion: 168 Resp: 249929
 Ion Ratio Lower Upper
 168 100
 99 49.2 37.6 56.4



#5
 Bromomethane
 Concen: Below Cal
 RT: 1.65 min Scan# 81
 Delta R.T. 0.01 min
 Lab File: VX007987.D
 Acq: 11 Mar 2019 22:56

Tgt Ion: 94 Resp: 149
 Ion Ratio Lower Upper
 94 100
 96 94.7 75.5 113.3



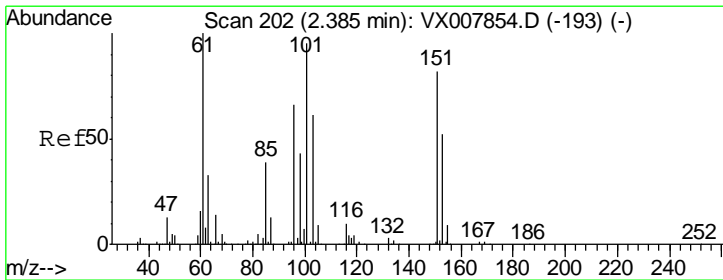
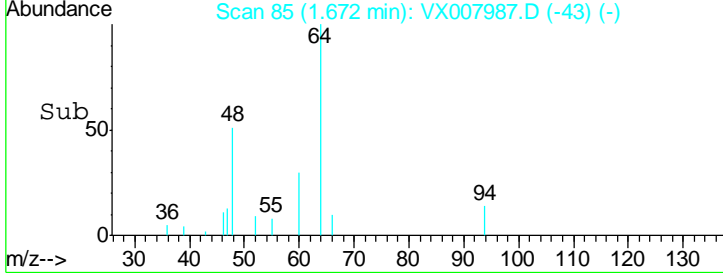
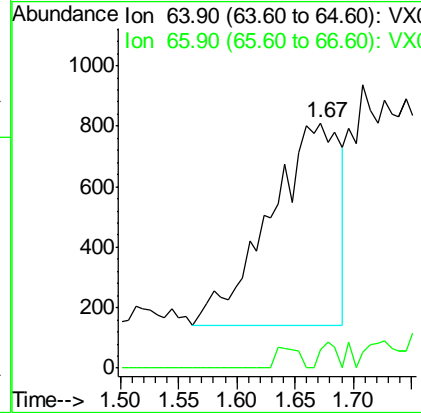
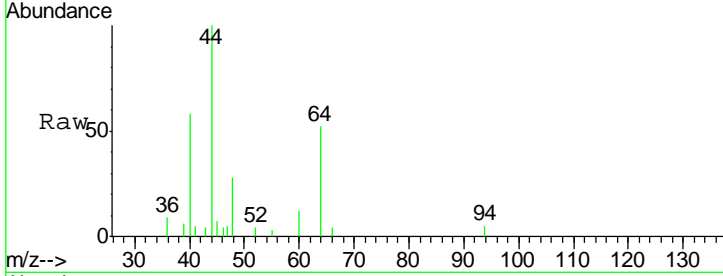


#6
 Chloroethane
 Concen: 1.538 ug/l
 RT: 1.67 min Scan# 85
 Delta R.T. -0.04 min
 Lab File: VX007987.D
 Acq: 11 Mar 2019 22:56

Instrument :
 MSVOA_X
ClientSampled :
 RE103D3-20190308

Tgt Ion: 64 Resp: 2794

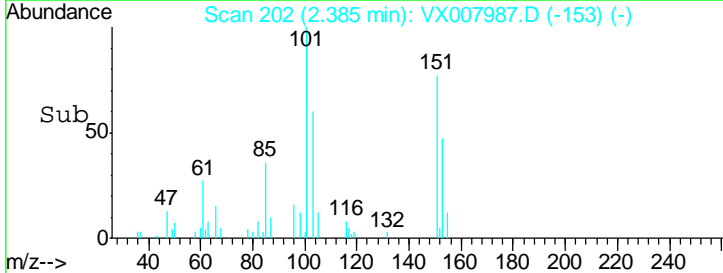
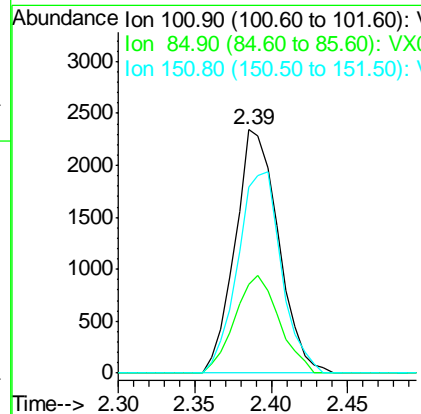
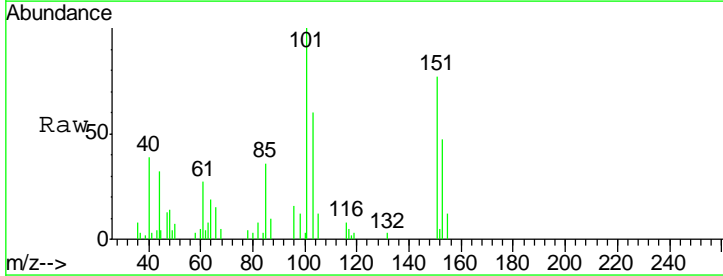
Ion	Ratio	Lower	Upper
64	100		
66	9.4	25.2	37.8#

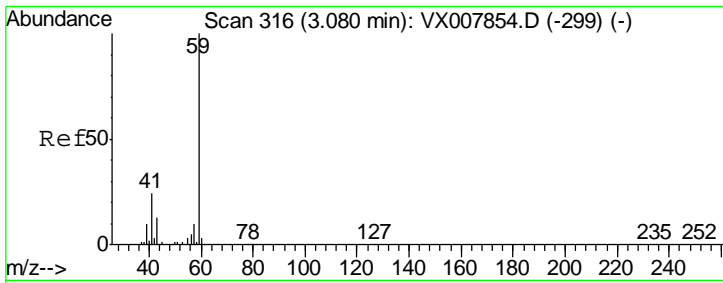


#9
 1,1,2-Trichlorotrifluoroethane
 Concen: 2.094 ug/l
 RT: 2.39 min Scan# 202
 Delta R.T. 0.00 min
 Lab File: VX007987.D
 Acq: 11 Mar 2019 22:56

Tgt Ion: 101 Resp: 4619

Ion	Ratio	Lower	Upper
101	100		
85	40.8	33.8	50.6
151	83.4	69.1	103.7

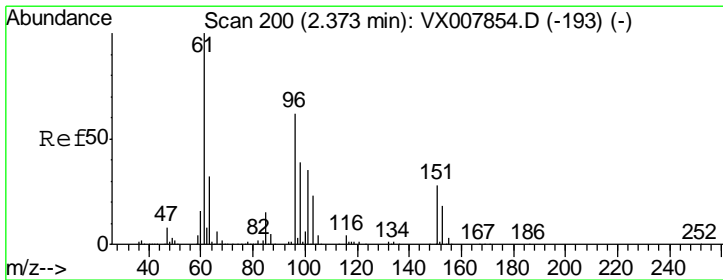
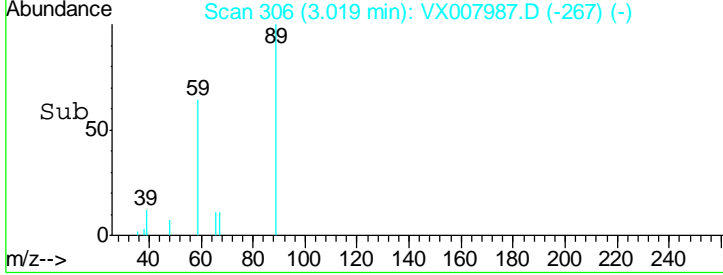
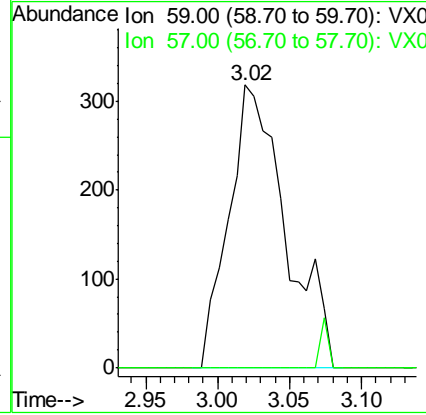
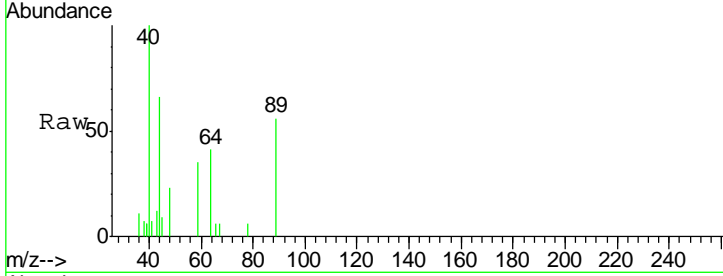




#11
 Tert butyl alcohol
 Concen: 1.479 ug/l
 RT: 3.02 min Scan# 306
 Delta R.T. -0.06 min
 Lab File: VX007987.D
 Acq: 11 Mar 2019 22:56

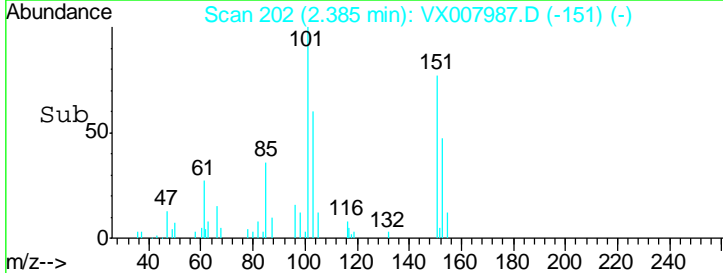
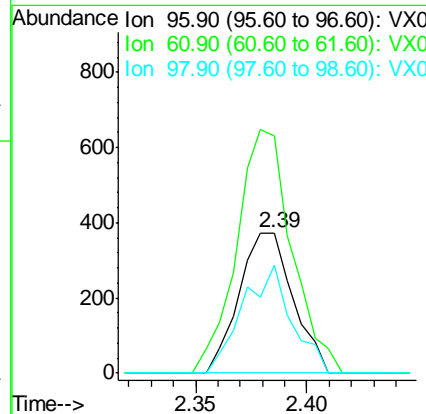
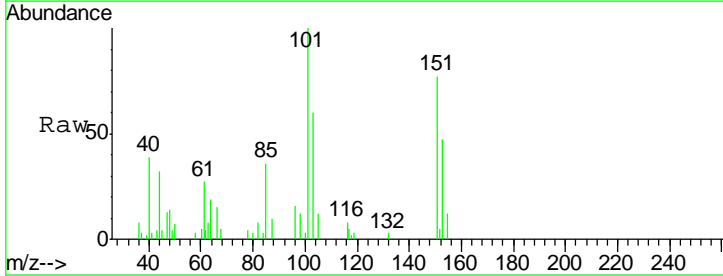
Instrument : MSVOA_X
 ClientSampled : RE103D3-20190308

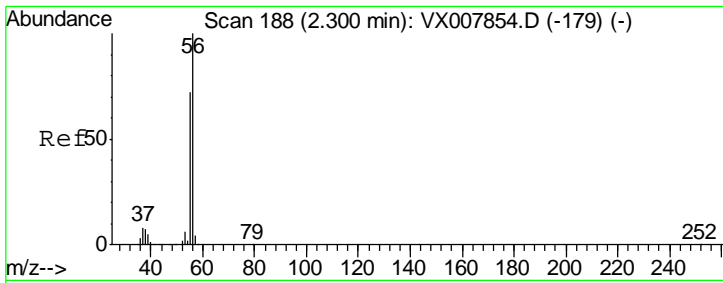
Tgt Ion	Resp	Lower	Upper
59	100		
57	0.0	8.2	12.2#



#12
 1,1-Dichloroethene
 Concen: 0.296 ug/l
 RT: 2.39 min Scan# 202
 Delta R.T. 0.01 min
 Lab File: VX007987.D
 Acq: 11 Mar 2019 22:56

Tgt Ion	Resp	Lower	Upper
96	100		
61	169.7	129.8	194.6
98	77.2	51.0	76.6#

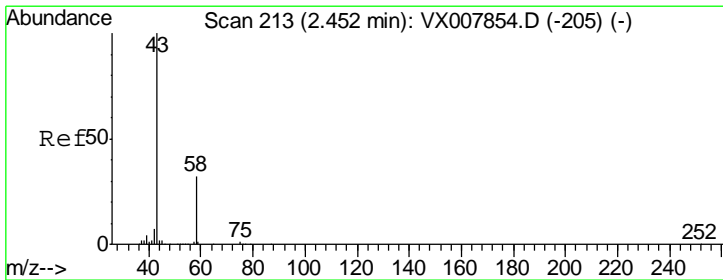
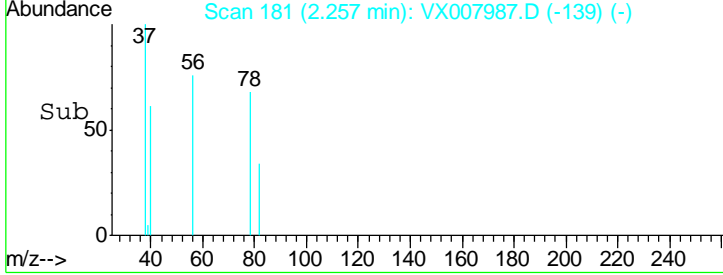
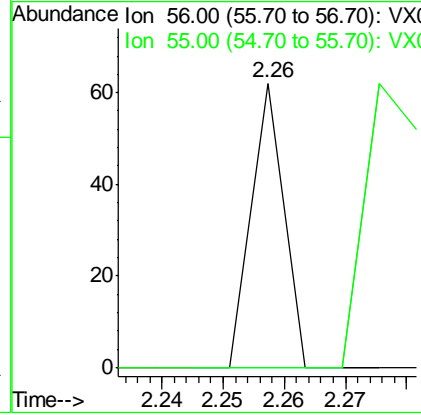
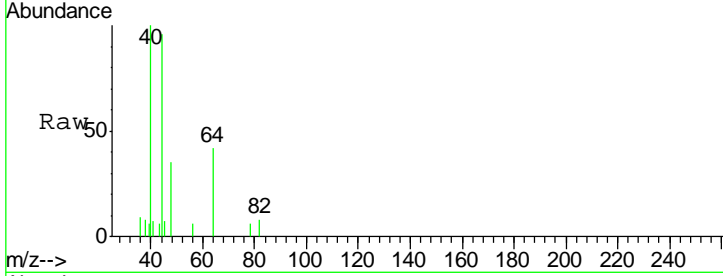




#13
 Acrolein
 Concen: 1.610 ug/l
 RT: 2.26 min Scan# 181
 Delta R.T. -0.04 min
 Lab File: VX007987.D
 Acq: 11 Mar 2019 22:56

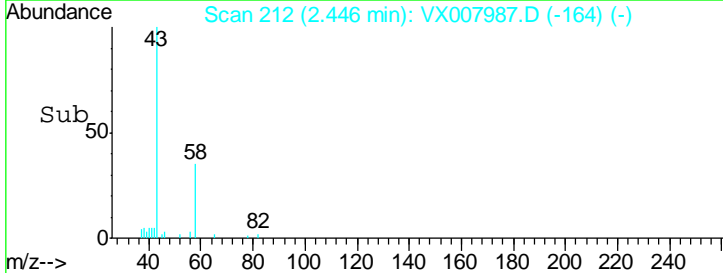
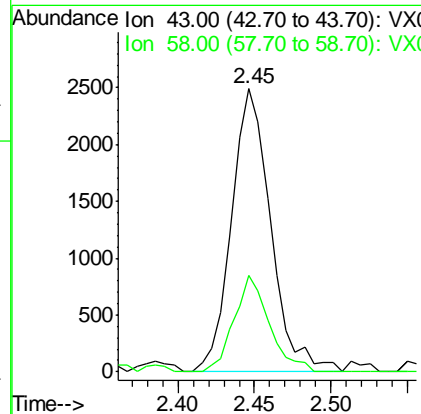
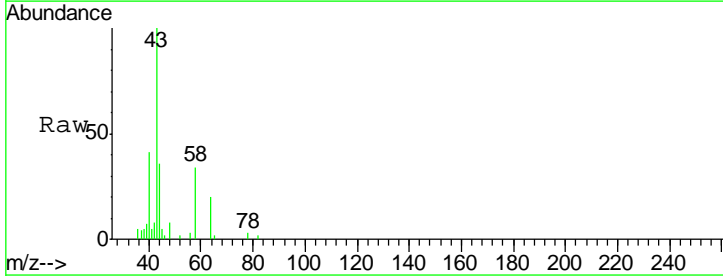
Instrument : MSVOA_X
 ClientSampleId : RE103D3-20190308

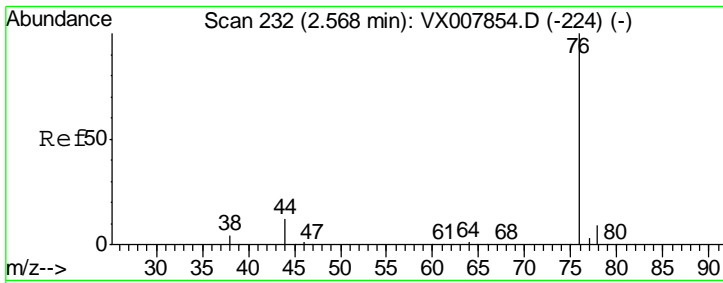
Tgt Ion: 56 Resp: 23
 Ion Ratio Lower Upper
 56 100
 55 182.6 57.8 86.6#



#16
 Acetone
 Concen: 2.902 ug/l
 RT: 2.45 min Scan# 212
 Delta R.T. -0.01 min
 Lab File: VX007987.D
 Acq: 11 Mar 2019 22:56

Tgt Ion: 43 Resp: 4429
 Ion Ratio Lower Upper
 43 100
 58 34.0 25.5 38.3

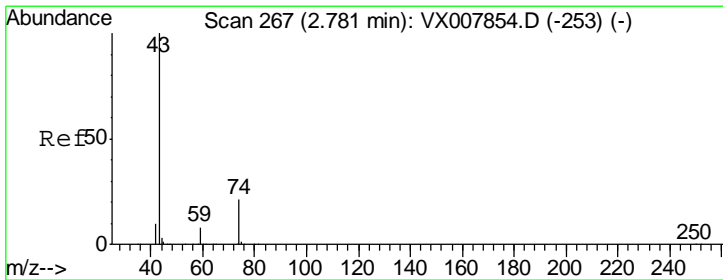
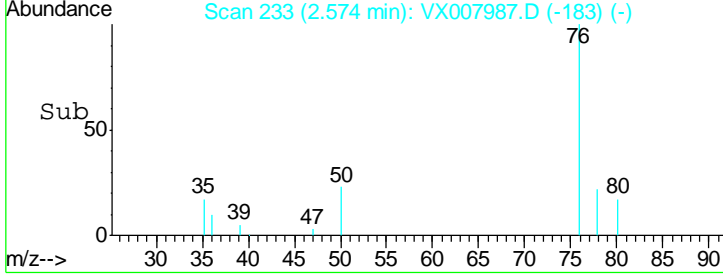
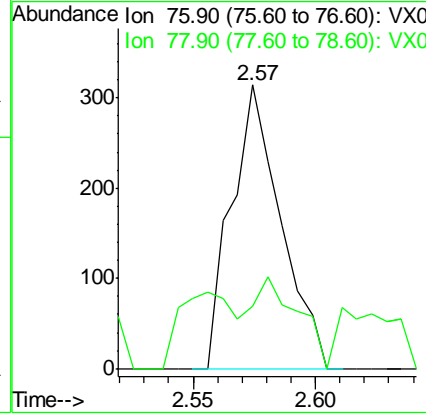
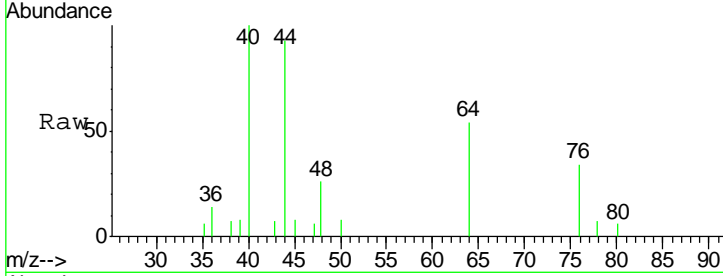




#17
 Carbon Disulfide
 Concen: Below Cal
 RT: 2.57 min Scan# 233
 Delta R.T. 0.01 min
 Lab File: VX007987.D
 Acq: 11 Mar 2019 22:56

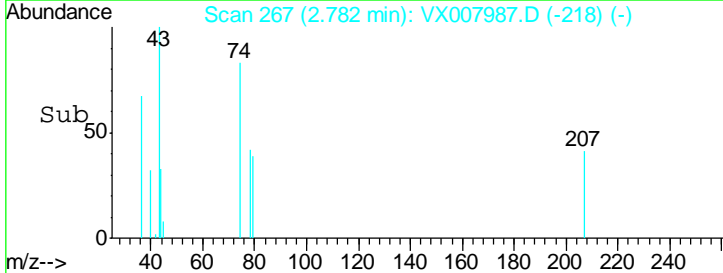
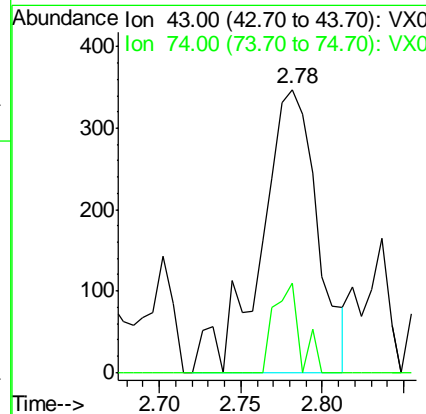
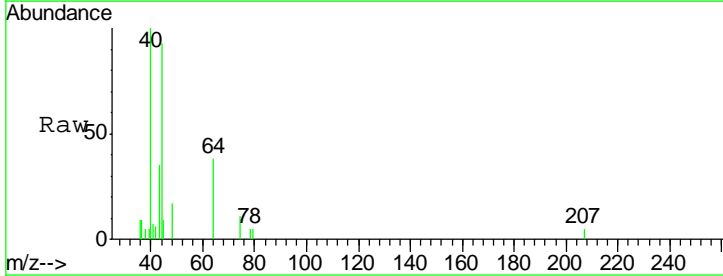
Instrument : MSVOA_X
 ClientSampled : RE103D3-20190308

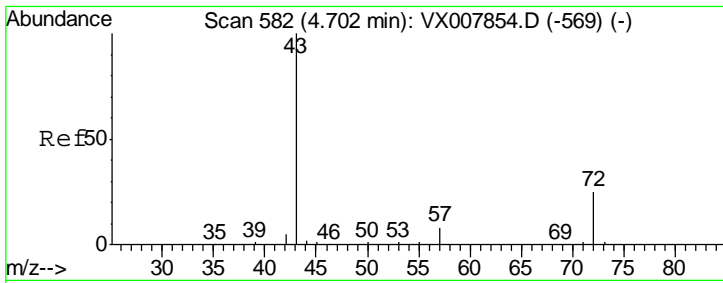
Tgt Ion	Resp	Lower	Upper
76	100		
78	0.3	7.2	10.8#



#18
 Methyl Acetate
 Concen: 0.258 ug/l
 RT: 2.78 min Scan# 267
 Delta R.T. 0.00 min
 Lab File: VX007987.D
 Acq: 11 Mar 2019 22:56

Tgt Ion	Resp	Lower	Upper
43	100		
74	14.3	17.8	26.6#

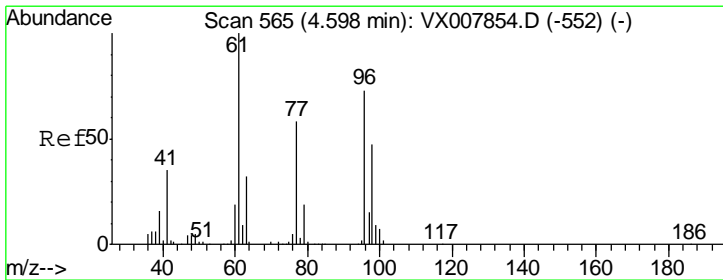
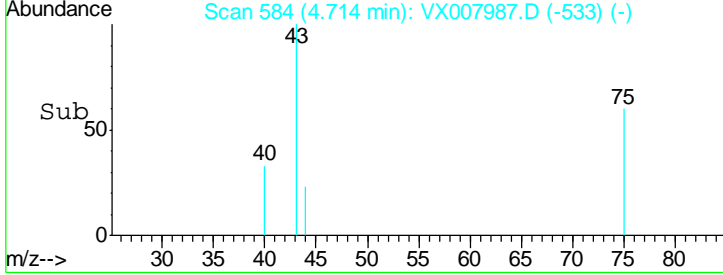
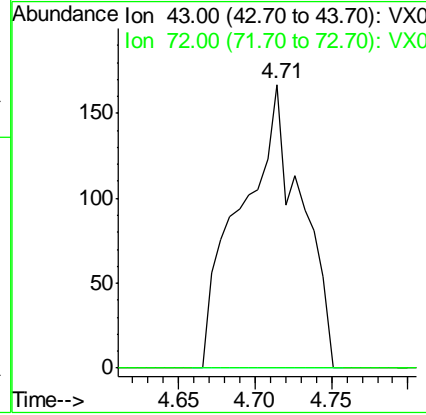
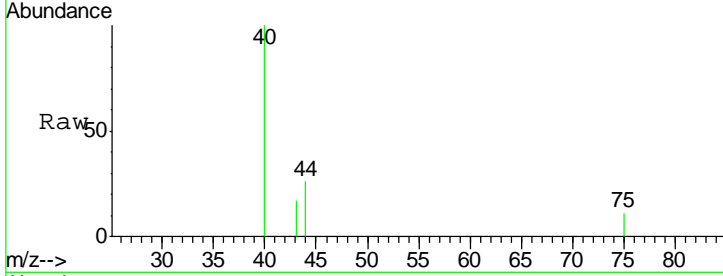




#25
 2-Butanone
 Concen: 0.212 ug/l
 RT: 4.71 min Scan# 584
 Delta R.T. 0.01 min
 Lab File: VX007987.D
 Acq: 11 Mar 2019 22:56

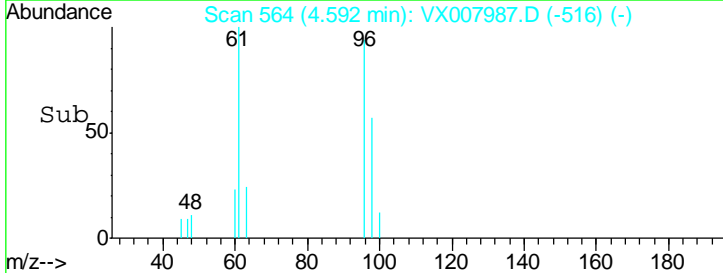
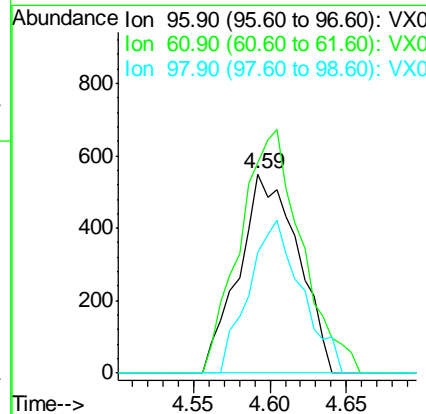
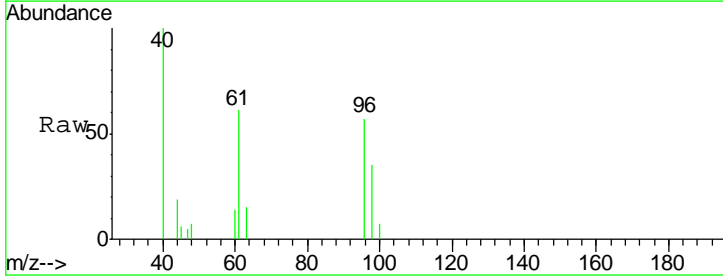
Instrument :
 MSVOA_X
ClientSampled :
 RE103D3-20190308

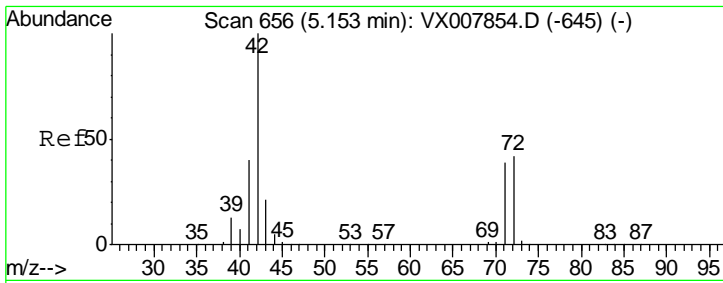
Tgt Ion	Resp	Lower	Upper
43	100		
72	0.0	19.9	29.9#



#27
 cis-1,2-Dichloroethene
 Concen: 0.551 ug/l
 RT: 4.59 min Scan# 564
 Delta R.T. -0.01 min
 Lab File: VX007987.D
 Acq: 11 Mar 2019 22:56

Tgt Ion	Resp	Lower	Upper
96	100		
61	127.6	0.0	288.0
98	68.3	0.0	129.0

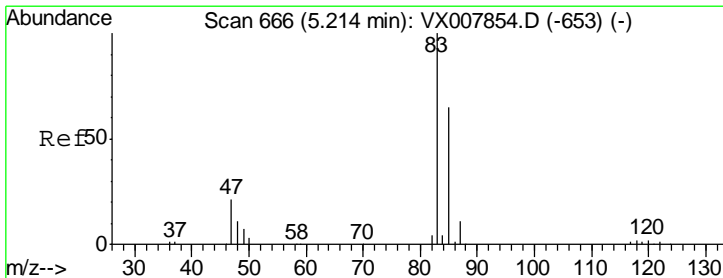
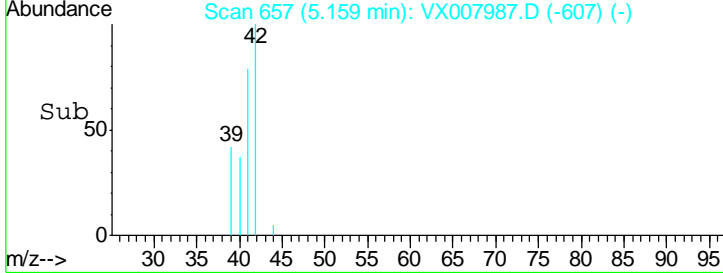
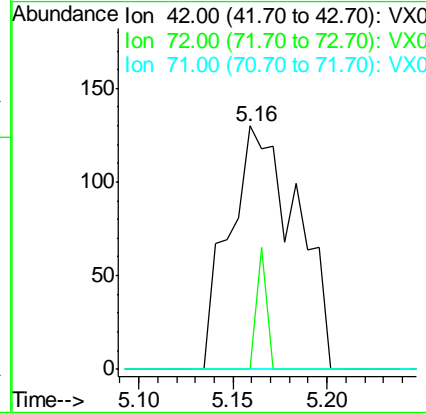
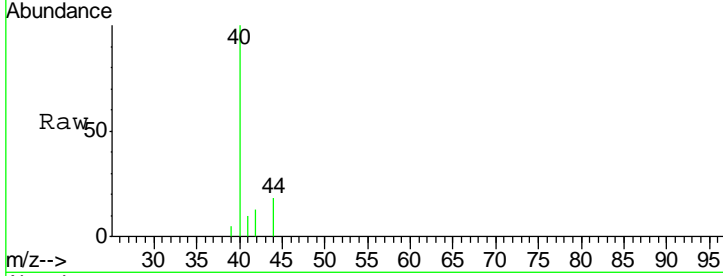




#29
 Tetrahydrofuran
 Concen: 0.239 ug/l
 RT: 5.16 min Scan# 657
 Delta R.T. 0.01 min
 Lab File: VX007987.D
 Acq: 11 Mar 2019 22:56

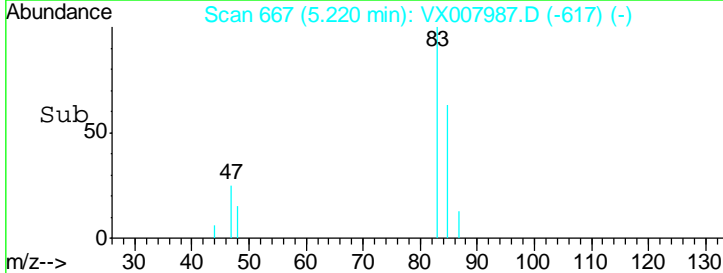
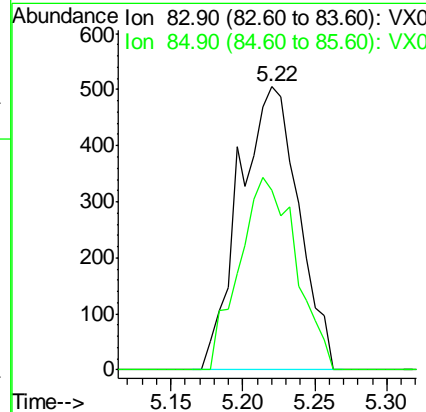
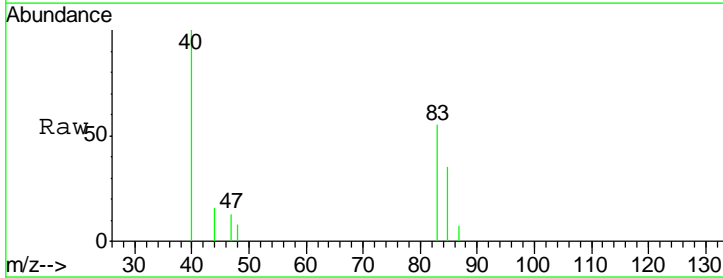
Instrument :
 MSVOA_X
ClientSampled :
 RE103D3-20190308

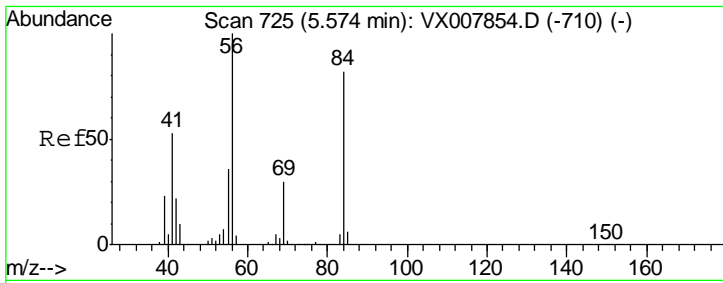
Tgt Ion	Ratio	Lower	Upper
42	100		
72	7.5	33.8	50.6#
71	0.0	31.5	47.3#



#30
 Chloroform
 Concen: 0.347 ug/l
 RT: 5.22 min Scan# 667
 Delta R.T. 0.01 min
 Lab File: VX007987.D
 Acq: 11 Mar 2019 22:56

Tgt Ion	Ratio	Lower	Upper
83	100		
85	63.4	51.8	77.6

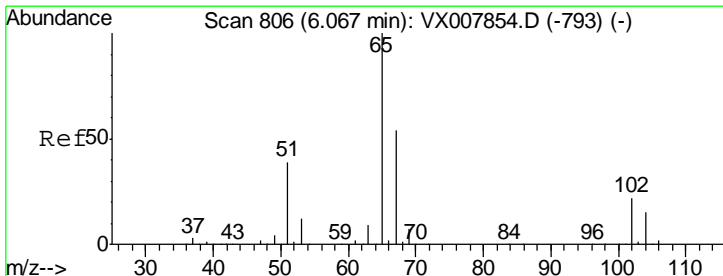
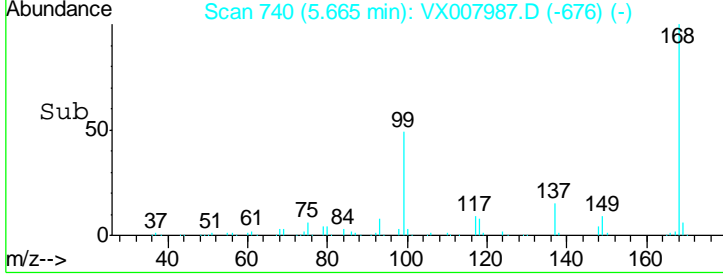
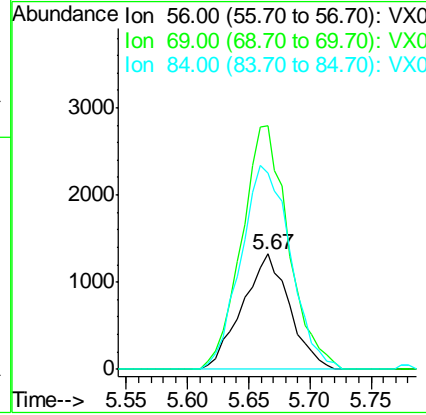
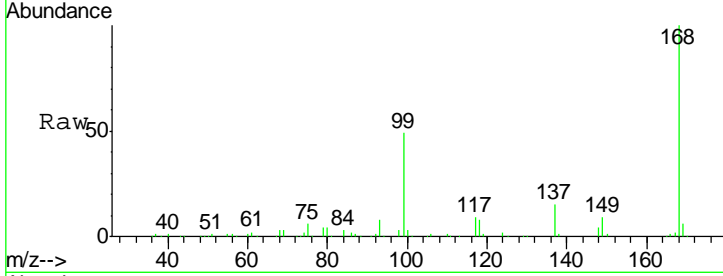




#31
 Cyclohexane
 Concen: 0.877 ug/l
 RT: 5.67 min Scan# 740
 Delta R.T. 0.09 min
 Lab File: VX007987.D
 Acq: 11 Mar 2019 22:56

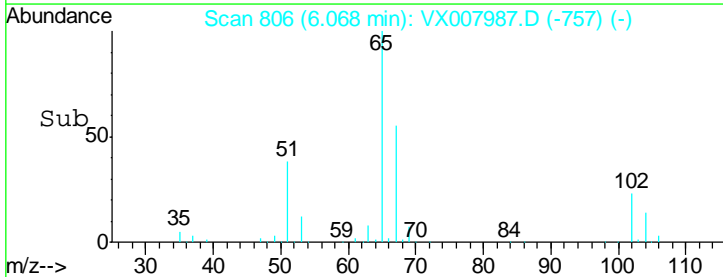
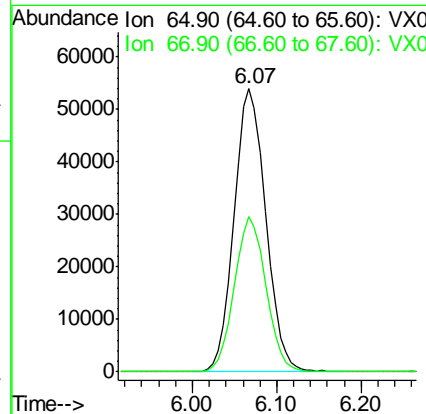
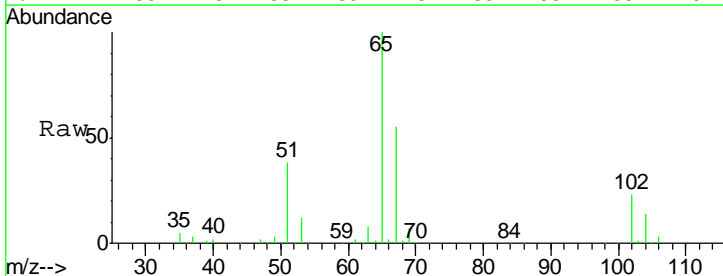
Instrument :
 MSVOA_X
ClientSampled :
 RE103D3-20190308

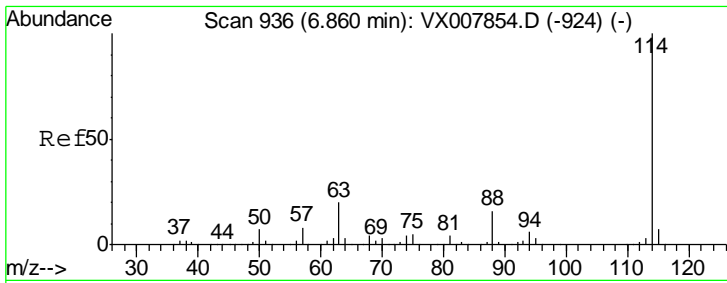
Tgt Ion	Resp	Lower	Upper
56	100		
69	211.6	24.0	36.0#
84	170.7	65.3	97.9#



#33
 1,2-Dichloroethane-d4
 Concen: 52.198 ug/l
 RT: 6.07 min Scan# 806
 Delta R.T. 0.00 min
 Lab File: VX007987.D
 Acq: 11 Mar 2019 22:56

Tgt Ion	Resp	Lower	Upper
65	100		
67	54.7	0.0	110.0

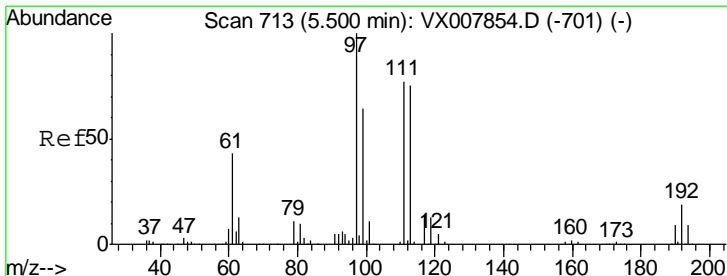
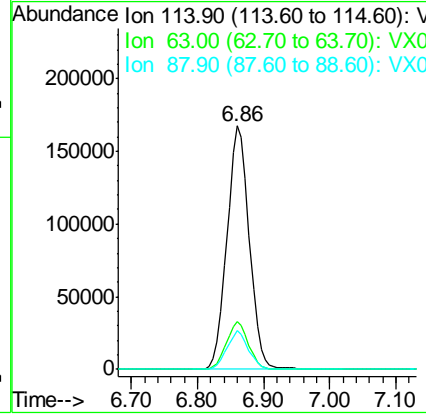
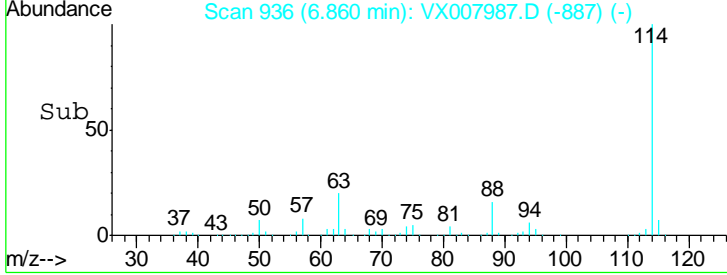
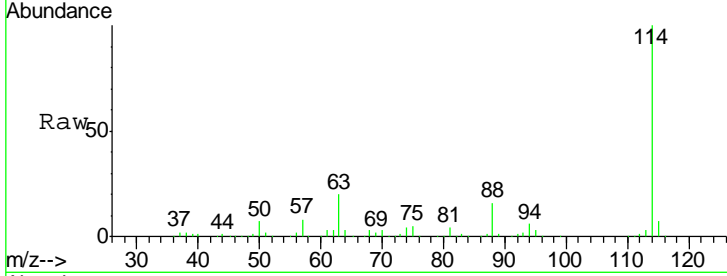




#34
 1,4-Difluorobenzene
 Concen: 50.000 ug/l
 RT: 6.86 min Scan# 936
 Delta R.T. 0.00 min
 Lab File: VX007987.D
 Acq: 11 Mar 2019 22:56

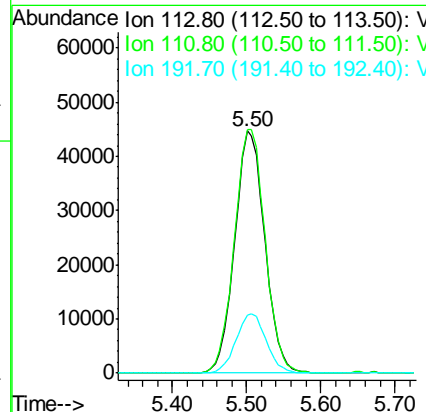
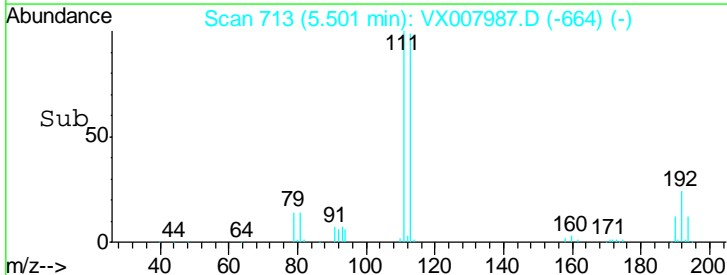
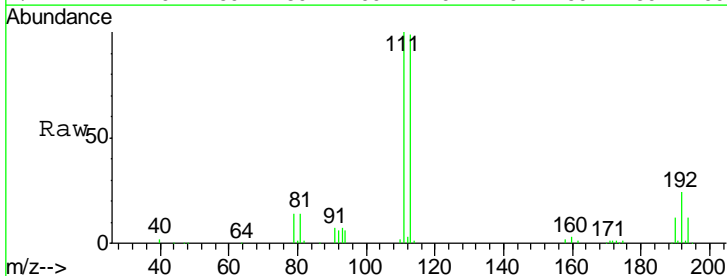
Instrument :
 MSVOA_X
ClientSampleId :
 RE103D3-20190308

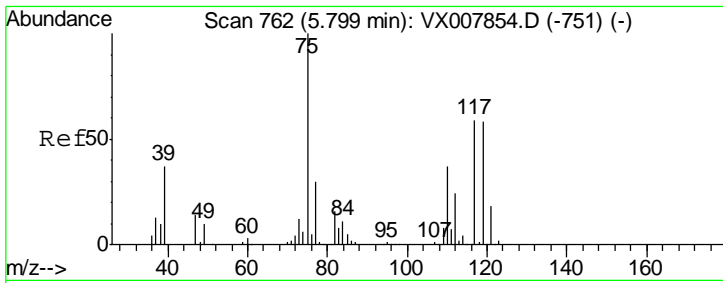
Tgt Ion	Resp	Lower	Upper
114	392245		
63	19.5	0.0	39.8
88	15.8	0.0	31.4



#35
 Dibromofluoromethane
 Concen: 50.503 ug/l
 RT: 5.50 min Scan# 713
 Delta R.T. 0.00 min
 Lab File: VX007987.D
 Acq: 11 Mar 2019 22:56

Tgt Ion	Resp	Lower	Upper
113	126715		
111	102.5	81.4	122.0
192	24.7	19.4	29.0

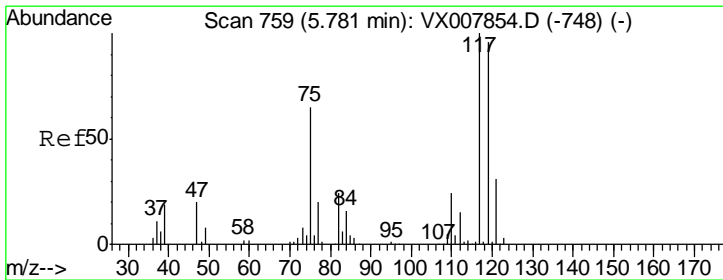
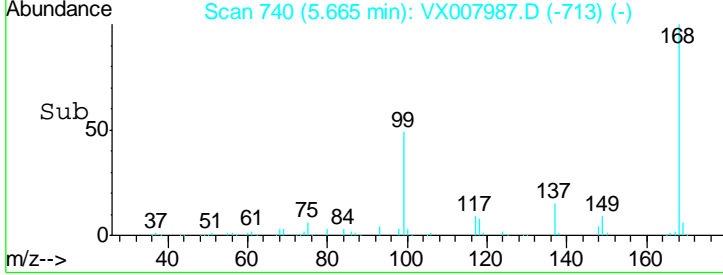
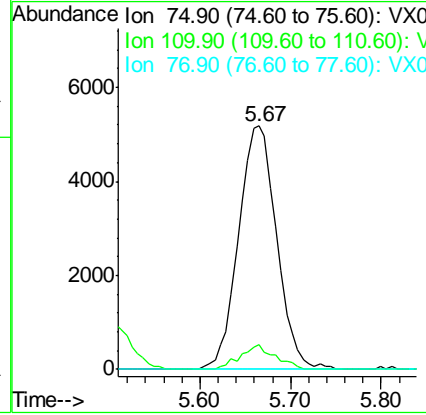
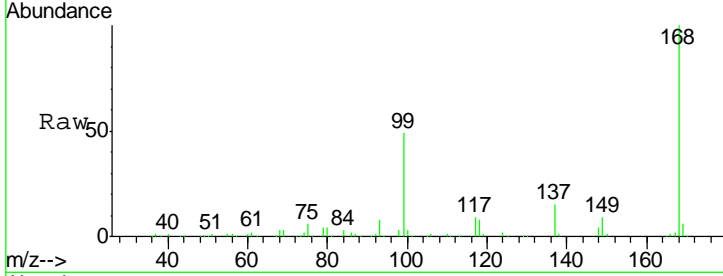




#36
 1,1-Dichloropropene
 Concen: 4.240 ug/l
 RT: 5.67 min Scan# 740
 Delta R.T. -0.13 min
 Lab File: VX007987.D
 Acq: 11 Mar 2019 22:56

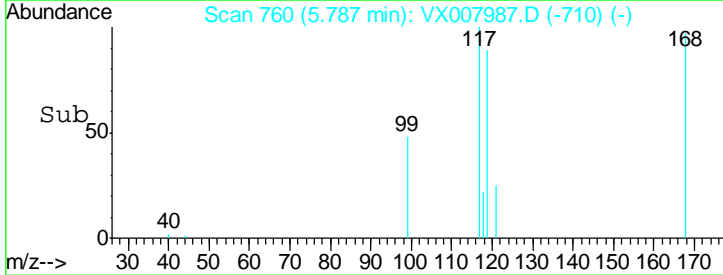
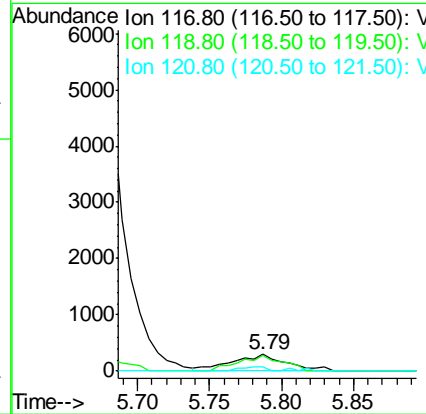
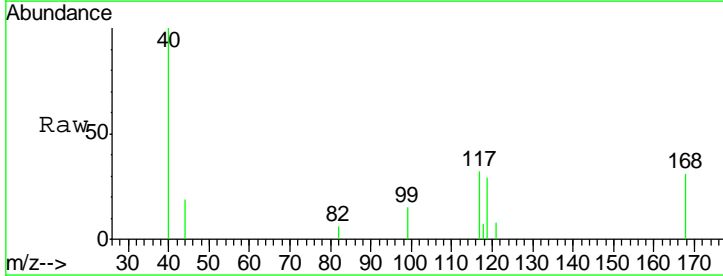
Instrument : MSVOA_X
 ClientSampled : RE103D3-20190308

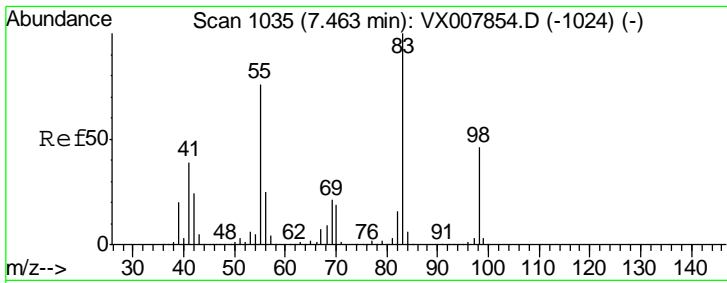
Tgt Ion	Resp	Lower	Upper
75	15058		
110	9.4	18.4	55.0#
77	0.0	25.0	37.4#



#38
 Carbon Tetrachloride
 Concen: 0.239 ug/l
 RT: 5.79 min Scan# 760
 Delta R.T. 0.01 min
 Lab File: VX007987.D
 Acq: 11 Mar 2019 22:56

Tgt Ion	Resp	Lower	Upper
117	805		
119	89.1	76.2	114.2
121	25.2	24.6	36.8

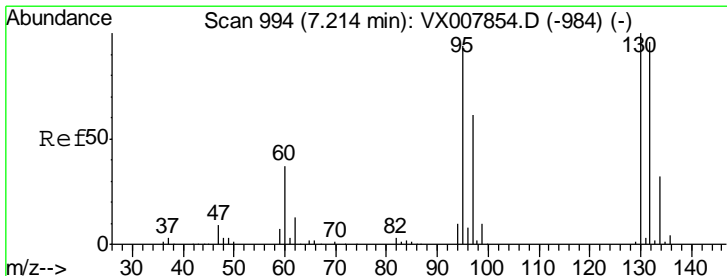
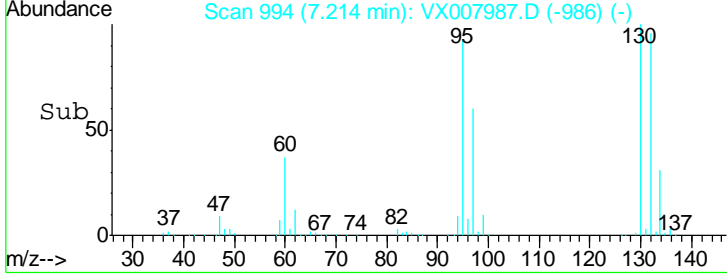
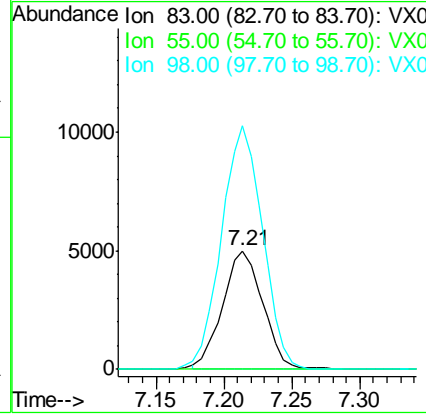
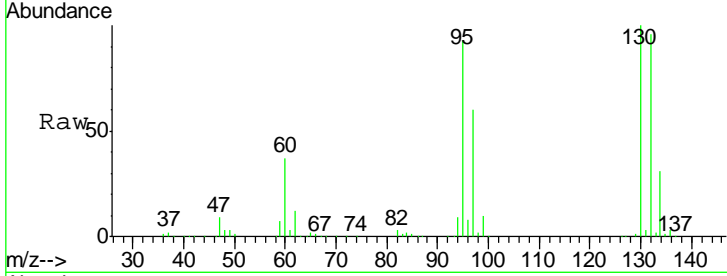




#39
 Methylcyclohexane
 Concen: 2.383 ug/l
 RT: 7.21 min Scan# 994
 Delta R.T. -0.25 min
 Lab File: VX007987.D
 Acq: 11 Mar 2019 22:56

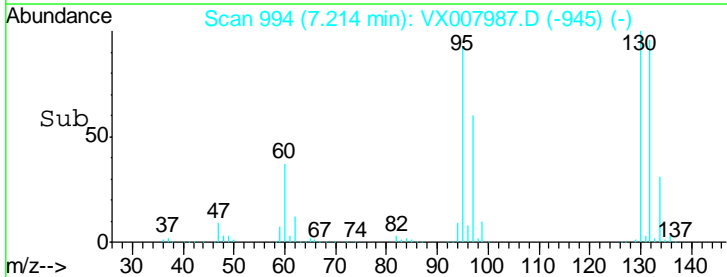
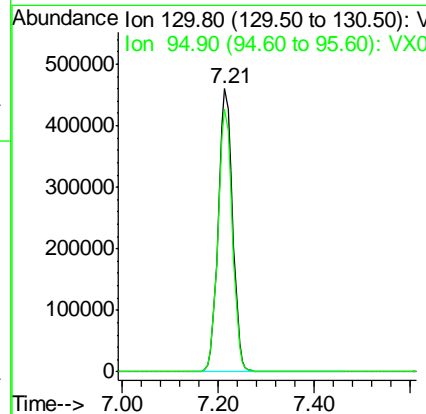
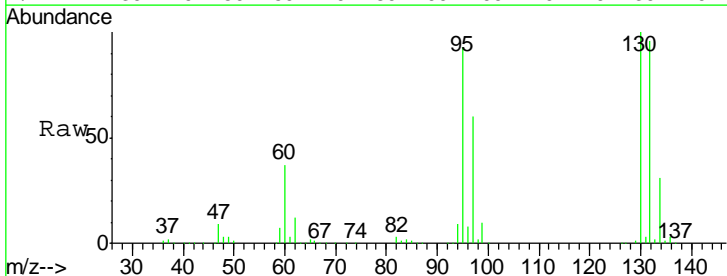
Instrument :
 MSVOA_X
ClientSampled :
 RE103D3-20190308

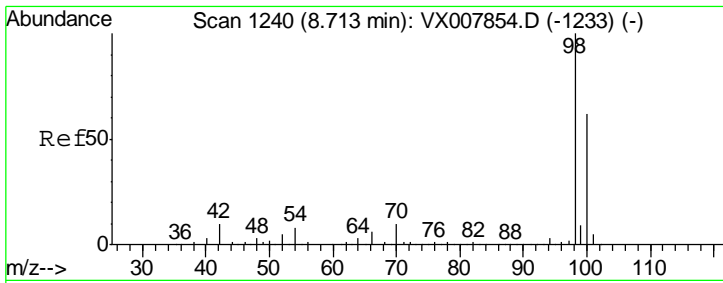
Tgt Ion	Resp	Lower	Upper
83	10257		
55	0.0	60.4	90.6#
98	205.3	36.5	54.7#



#44
 Trichloroethene
 Concen: 329.316 ug/l
 RT: 7.21 min Scan# 994
 Delta R.T. 0.00 min
 Lab File: VX007987.D
 Acq: 11 Mar 2019 22:56

Tgt Ion	Resp	Lower	Upper
130	959590		
95	92.7	0.0	188.0

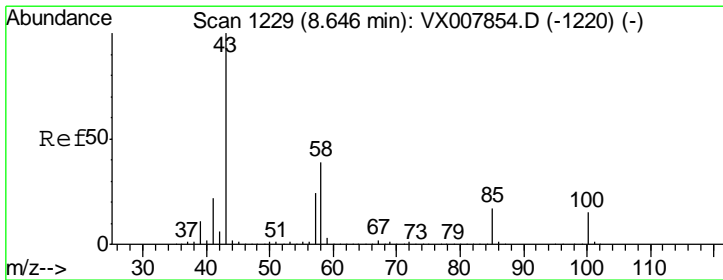
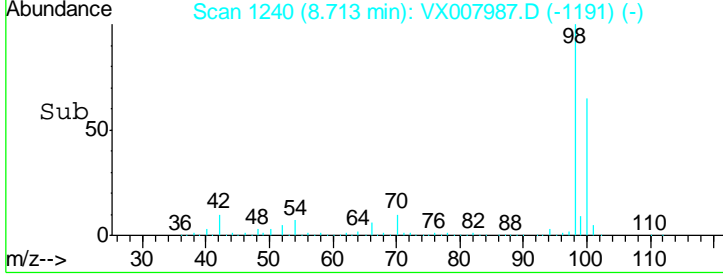
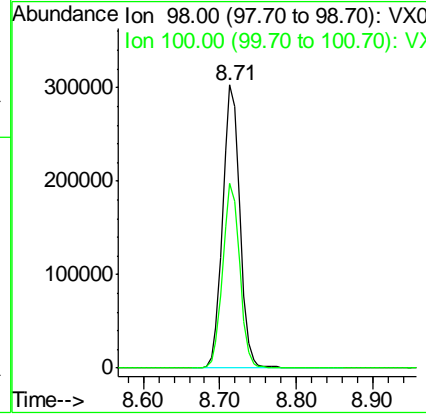
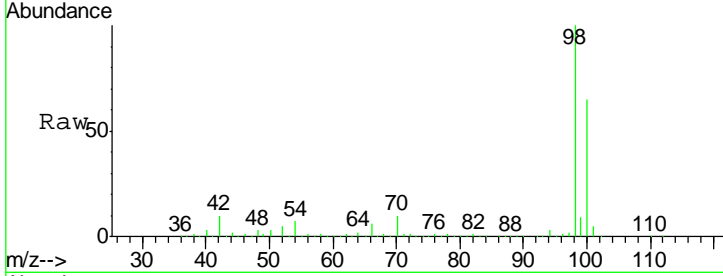




#50
 Toluene-d8
 Concen: 51.237 ug/l
 RT: 8.71 min Scan# 1240
 Delta R.T. 0.00 min
 Lab File: VX007987.D
 Acq: 11 Mar 2019 22:56

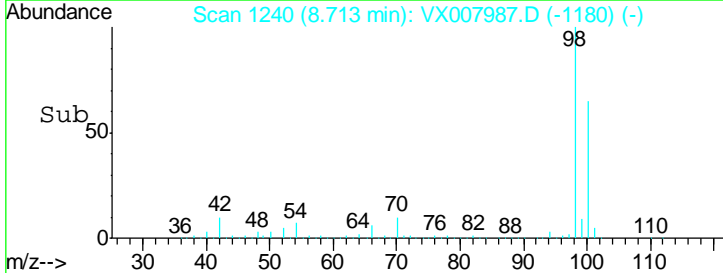
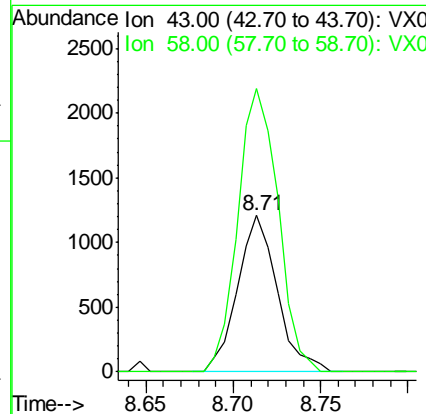
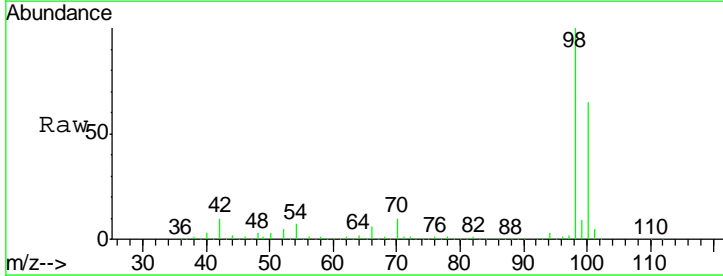
Instrument :
 MSVOA_X
ClientSampled :
 RE103D3-20190308

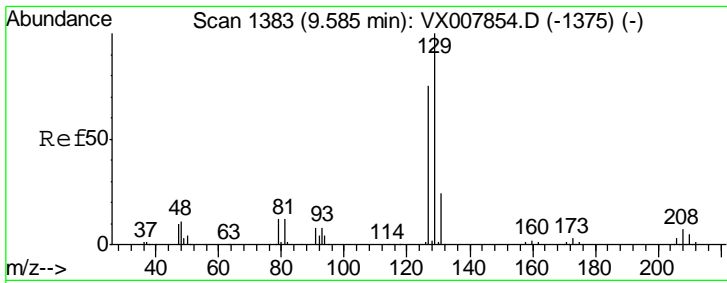
Tot Ion: 98 Resp: 472133
 Ion Ratio Lower Upper
 98 100
 100 64.8 51.7 77.5



#51
 4-Methyl-2-Pentanone
 Concen: 0.476 ug/l
 RT: 8.71 min Scan# 1240
 Delta R.T. 0.07 min
 Lab File: VX007987.D
 Acq: 11 Mar 2019 22:56

Tgt Ion: 43 Resp: 1910
 Ion Ratio Lower Upper
 43 100
 58 183.4 31.3 46.9#

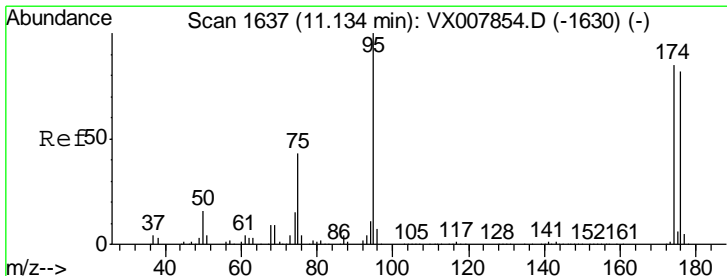
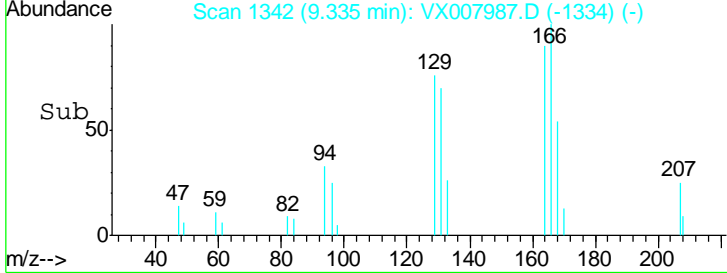
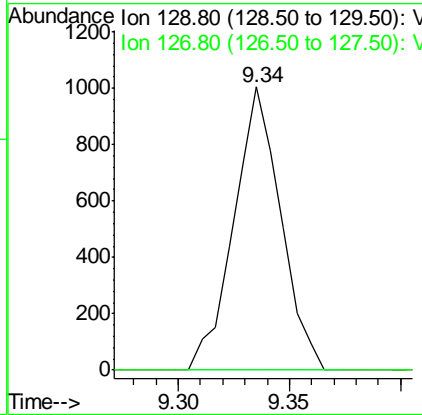
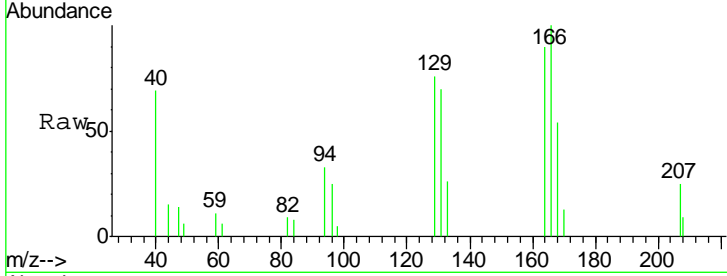




#60
 Dibromochloromethane
 Concen: 0.538 ug/l
 RT: 9.34 min Scan# 1342
 Delta R.T. -0.25 min
 Lab File: VX007987.D
 Acq: 11 Mar 2019 22:56

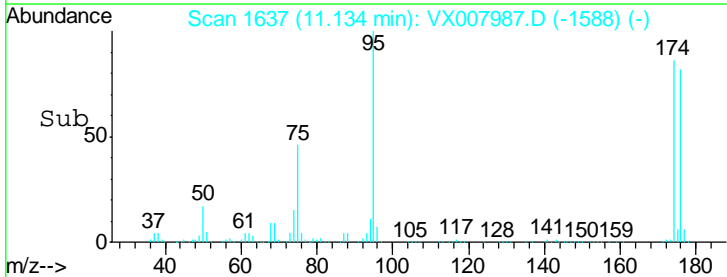
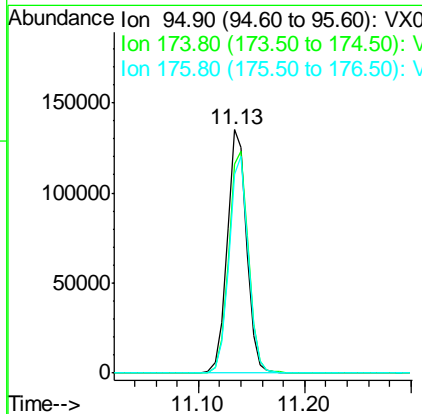
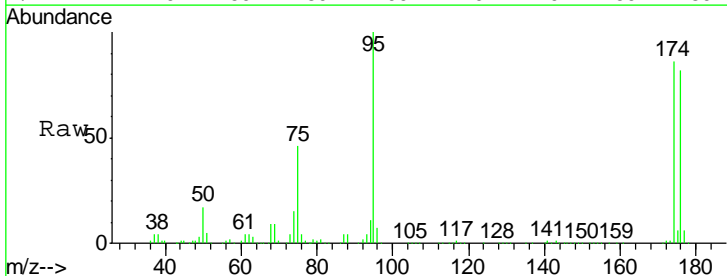
Instrument : MSVOA_X
 ClientSampleId : RE103D3-20190308

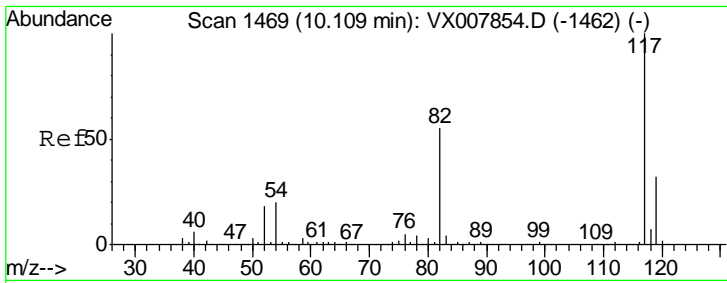
Tgt Ion: 129 Resp: 1470
 Ion Ratio Lower Upper
 129 100
 127 0.0 38.3 114.8#



#62
 4-Bromofluorobenzene
 Concen: 53.289 ug/l
 RT: 11.13 min Scan# 1637
 Delta R.T. 0.00 min
 Lab File: VX007987.D
 Acq: 11 Mar 2019 22:56

Tgt Ion: 95 Resp: 172159
 Ion Ratio Lower Upper
 95 100
 174 92.8 0.0 182.8
 176 88.9 0.0 178.0

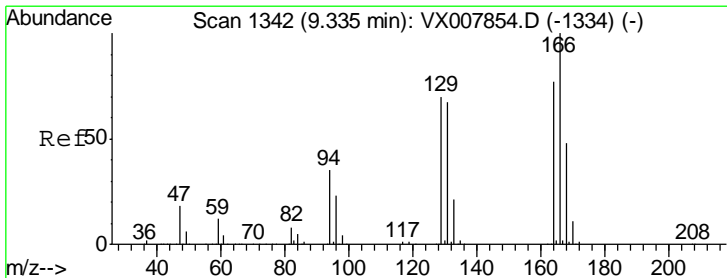
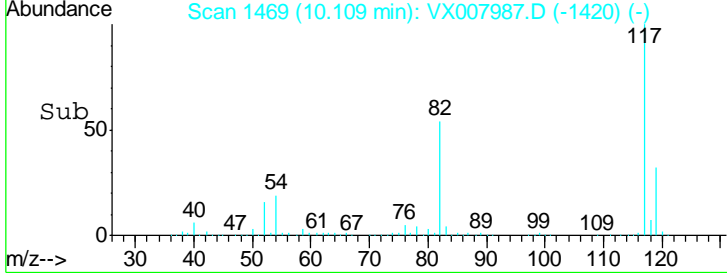
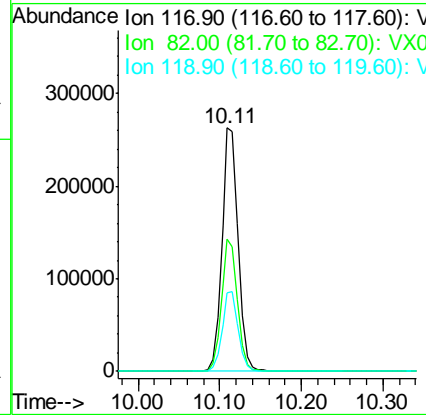
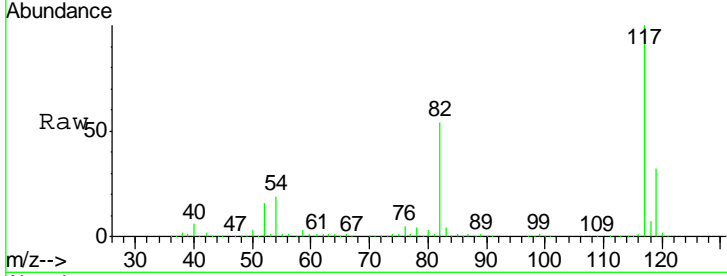




#63
 Chlorobenzene-d5
 Concen: 50.000 ug/l
 RT: 10.11 min Scan# 1469
 Delta R.T. 0.00 min
 Lab File: VX007987.D
 Acq: 11 Mar 2019 22:56

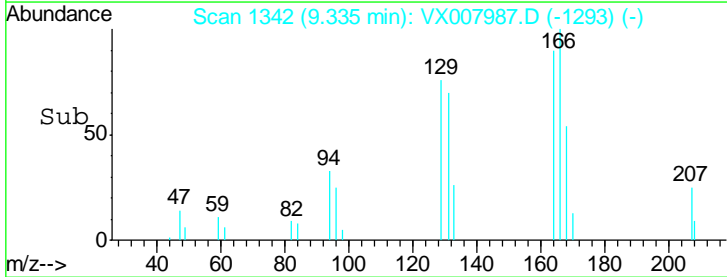
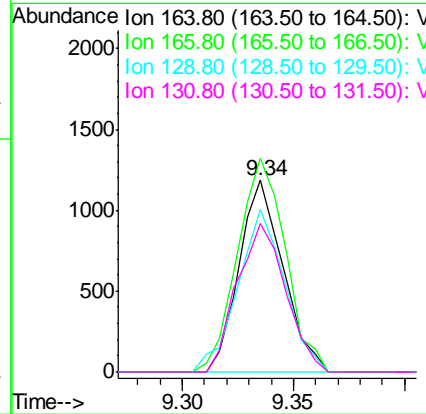
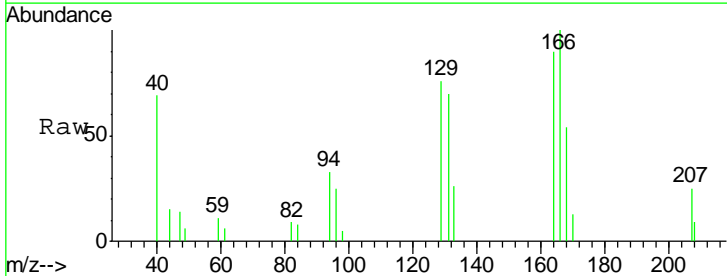
Instrument : MSVOA_X
 ClientSampled : RE103D3-20190308

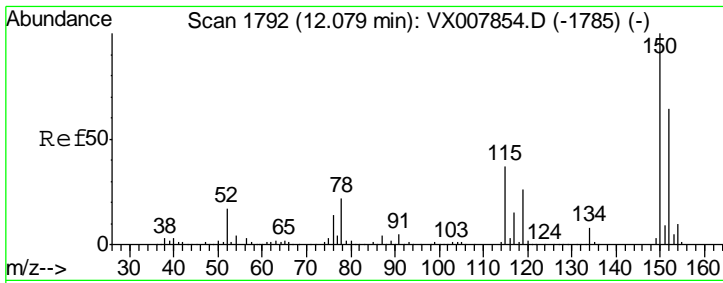
Tgt Ion	Resp	Lower	Upper
117	100		
82	54.4	44.3	66.5
119	32.0	25.3	37.9



#64
 Tetrachloroethene
 Concen: 0.536 ug/l
 RT: 9.34 min Scan# 1342
 Delta R.T. 0.00 min
 Lab File: VX007987.D
 Acq: 11 Mar 2019 22:56

Tgt Ion	Resp	Lower	Upper
164	100		
166	111.5	103.4	155.0
129	84.7	72.2	108.4
131	77.6	69.4	104.2

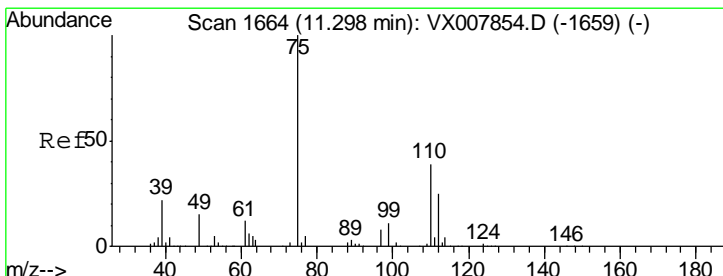
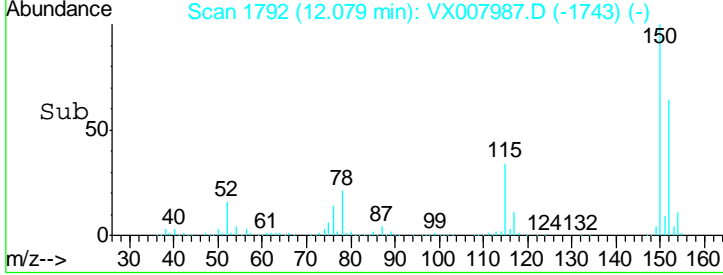
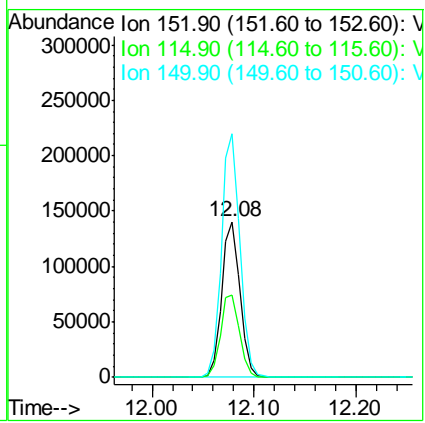
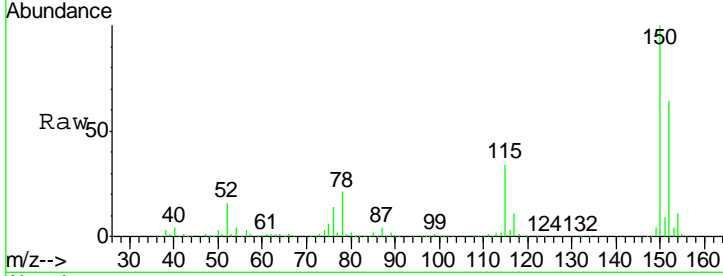




#72
 1,4-Dichlorobenzene-d4
 Concen: 50.000 ug/l
 RT: 12.08 min Scan# 1792
 Delta R.T. 0.00 min
 Lab File: VX007987.D
 Acq: 11 Mar 2019 22:56

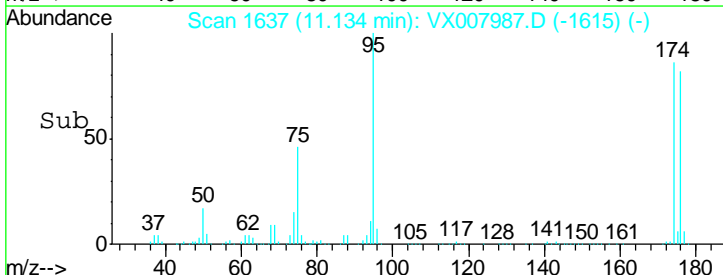
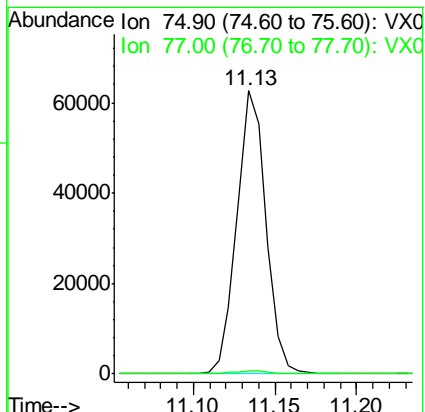
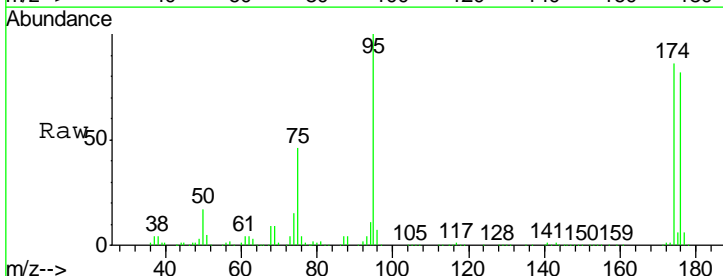
Instrument : MSVOA_X
 ClientSampleId : RE103D3-20190308

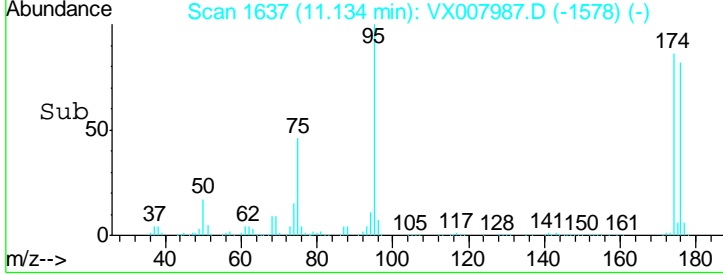
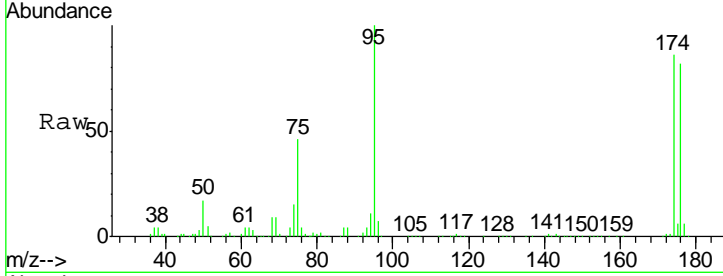
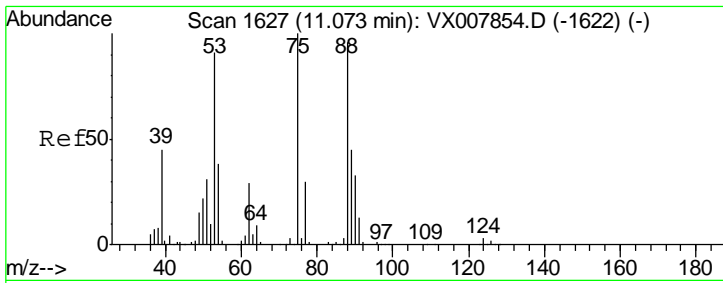
Tgt Ion	Resp	Lower	Upper
152	100		
115	55.5	38.6	115.7
150	157.2	0.0	348.4



#76
 1,2,3-Trichloropropane
 Concen: 21.207 ug/l
 RT: 11.13 min Scan# 1637
 Delta R.T. -0.16 min
 Lab File: VX007987.D
 Acq: 11 Mar 2019 22:56

Tgt Ion	Resp	Lower	Upper
75	100		
77	1.3	18.9	56.7#





#81
 trans-1,4-Dichloro-2-butene
 Concen: 67.789 ug/l
 RT: 11.13 min Scan# 1637
 Delta R.T. 0.06 min
 Lab File: VX007987.D
 Acq: 11 Mar 2019 22:56

Instrument : MSVOA_X
 ClientSampleId : RE103D3-20190308

Tot Ion	Ratio	Lower	Upper
75	100		
53	0.0	76.1	114.1#
89	0.0	36.3	54.5#

