

Data Path : Z:\VOASRV\HPCHEM1\MSVOA\_X\DATA\VX031219\  
 Data File : VX008015.D  
 Acq On : 12 Mar 2019 14:48  
 Operator : JC/SP  
 Sample : K1841-05  
 Misc : 5.0mL/MSVOA\_X/WATER  
 ALS Vial : 7 Sample Multiplier: 1

Instrument :  
 MSVOA\_X  
 ClientSampleId :  
 RE122D3-20190308

Integration Parameters: RTEINT.P  
 Integrator: RTE  
 Smoothing : ON Filtering: 5  
 Sampling : 1 Min Area: 3 % of largest Peak  
 Start Thrs: 0.2 Max Peaks: 100  
 Stop Thrs : 0 Peak Location: TOP

If leading or trailing edge < 100 prefer < Baseline drop else tangent >  
 Peak separation: 5

Method : Z:\VOASRV\HPCHEM1\MSVOA\_X\METHOD\82X030619W.M  
 Title : SW846 8260

Signal : TIC

peak #	R.T. min	first scan	max scan	last scan	PK TY	peak height	corr. area	corr. % max.	% of total
1	2.617	235	240	250	rVB	6709	13330	1.09%	0.202%
2	5.507	702	714	725	rBV	147113	419966	34.36%	6.374%
3	5.665	729	740	754	rVV	236321	660106	54.01%	10.019%
4	6.068	795	806	828	rVB	151027	393575	32.20%	5.974%
5	6.860	926	936	955	rBV	372900	874200	71.53%	13.269%
6	7.214	986	994	1006	rVB	45634	96183	7.87%	1.460%
7	8.714	1233	1240	1259	rBV	793679	1222226	100.00%	18.552%
8	10.110	1463	1469	1489	rBV	771449	1053340	86.18%	15.988%
9	11.134	1632	1637	1651	rBV	653104	843508	69.01%	12.803%
10	12.079	1786	1792	1801	rBV	813037	1011801	82.78%	15.358%

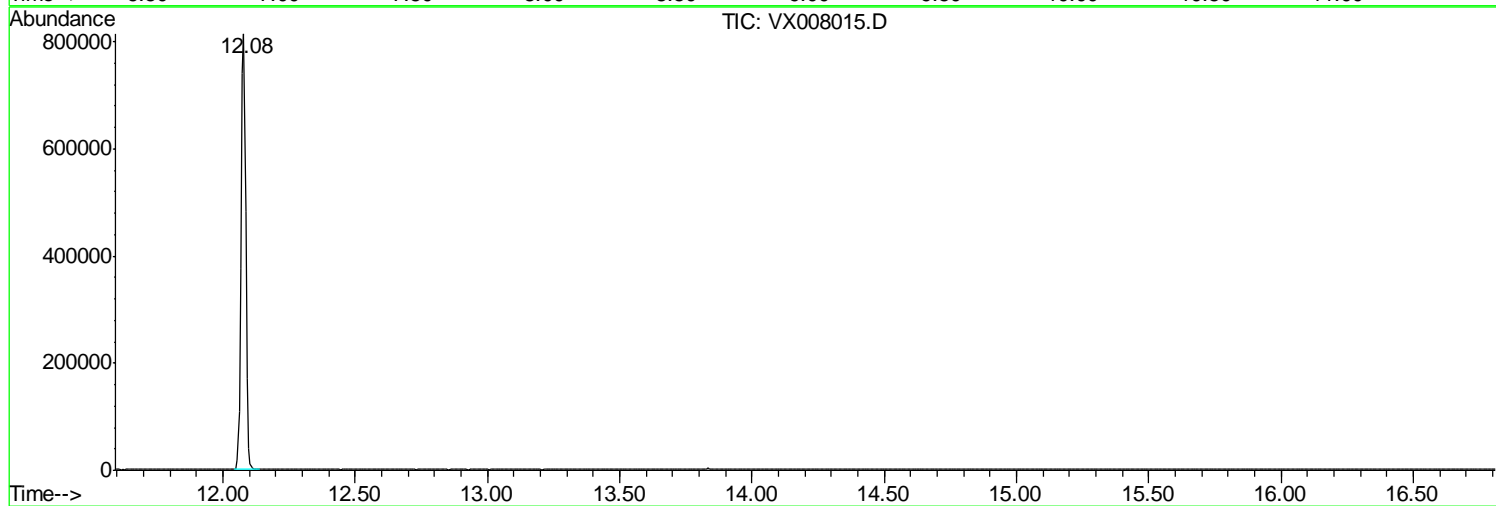
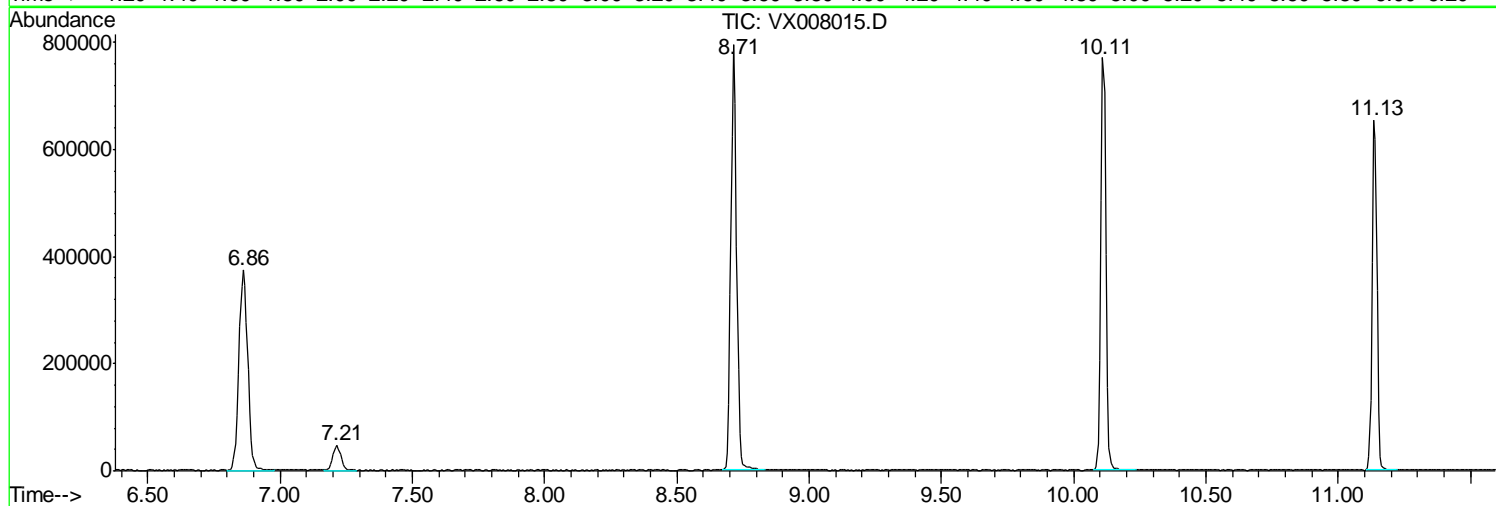
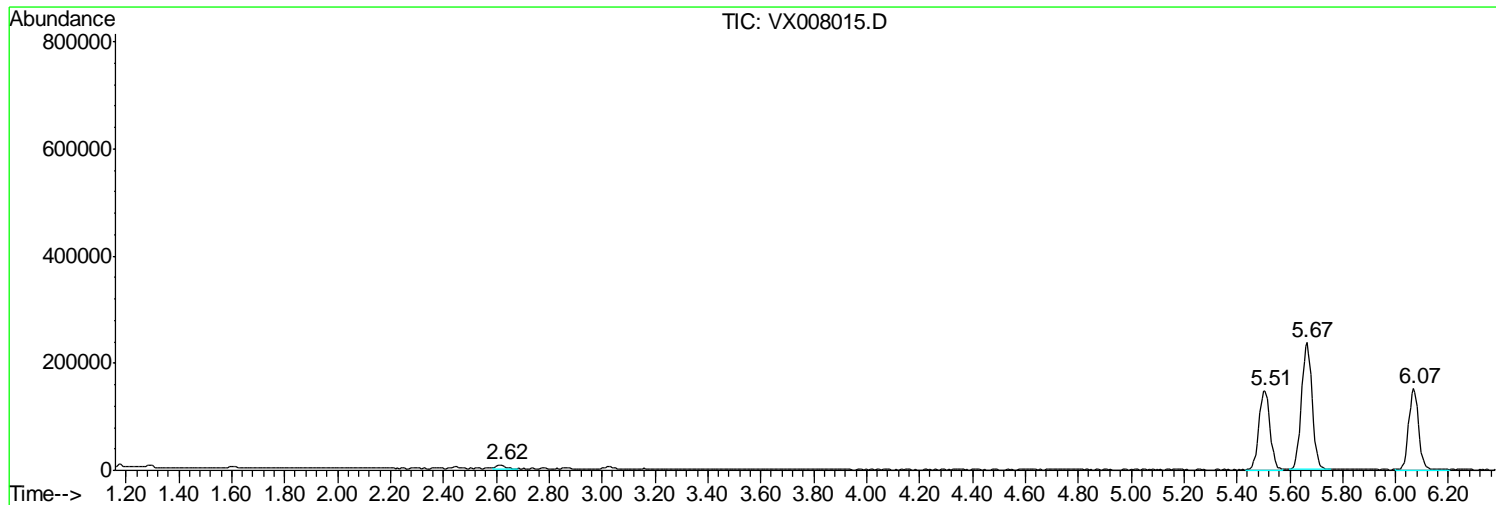
Sum of corrected areas: 6588235

Data Path : Z:\VOASRV\HPCHEM1\MSVOA\_X\DATA\VX031219\  
Data File : VX008015.D  
Acq On : 12 Mar 2019 14:48  
Operator : JC/SP  
Sample : K1841-05  
Misc : 5.0mL/MSVOA\_X/WATER  
ALS Vial : 7 Sample Multiplier: 1

Instrument :  
MSVOA\_X  
ClientSampled :  
RE122D3-20190308

Quant Method : Z:\VOASRV\HPCHEM1\MSVOA\_X\METHOD\82X030619W.M  
Quant Title : SW846 8260

TIC Library : C:\DATABASE\NIST11.L  
TIC Integration Parameters: LSCINT.P



Data Path : Z:\VOASRV\HPCHEM1\MSVOA\_X\DATA\VX031219\  
Data File : VX008015.D  
Acq On : 12 Mar 2019 14:48  
Operator : JC/SP  
Sample : K1841-05  
Misc : 5.0mL/MSVOA\_X/WATER  
ALS Vial : 7 Sample Multiplier: 1

Instrument :  
MSVOA\_X  
ClientSampleId :  
RE122D3-20190308

Quant Method : Z:\VOASRV\HPCHEM1\MSVOA\_X\METHOD\82X030619W.M  
Quant Title : SW846 8260

TIC Library : C:\DATABASE\NIST11.L  
TIC Integration Parameters: LSCINT.P

No Library Search Compounds Detected

\*\*\*\*\*

Data Path : Z:\VOASRV\HPCHEM1\MSVOA\_X\DATA\VX031219\  
Data File : VX008015.D  
Acq On : 12 Mar 2019 14:48  
Operator : JC/SP  
Sample : K1841-05  
Misc : 5.0mL/MSVOA\_X/WATER  
ALS Vial : 7 Sample Multiplier: 1

Instrument :  
MSVOA\_X  
ClientSampleId :  
RE122D3-20190308

Quant Method : Z:\VOASRV\HPCHEM1\MSVOA\_X\METHOD\82X030619W.M  
Quant Title : SW846 8260

TIC Library : C:\DATABASE\NIST11.L  
TIC Integration Parameters: LSCINT.P

TIC Top Hit name	RT	EstConc	Units	Response	--Internal Standard--			
					#	RT	Resp	Conc

---