

Data Path : Z:\VOASRV\HPCHEM1\MSVOA X\DATA\VX031220\
 Data File : VX015239.D
 Acq On : 12 Mar 2020 17:37
 Operator : JC/SP
 Sample : L1913-20
 Misc : 5.0mL/MSVOA X/WATER
 ALS Vial : 21 Sample Multiplier: 1

Instrument :
 MSVOA_X
 ClientSampleId :
 TRIP-BLANK

Quant Time: Mar 13 04:30:47 2020
 Quant Method : Z:\VOASRV\HPCHEM1\MSVOA_X\METHOD\82X030420W.M
 Quant Title : SW846 8260
 QLast Update : Wed Mar 04 14:19:10 2020
 Response via : Initial Calibration

| Internal Standards | R.T. | QIon | Response | Conc | Units | Dev(Min) |
|----------------------------|-------|------|----------|-------|-------|----------|
| 1) Pentafluorobenzene | 5.65 | 168 | 274186 | 50.00 | ug/l | 0.00 |
| 34) 1,4-Difluorobenzene | 6.85 | 114 | 431808 | 50.00 | ug/l | 0.00 |
| 63) Chlorobenzene-d5 | 10.11 | 117 | 383109 | 50.00 | ug/l | 0.00 |
| 72) 1,4-Dichlorobenzene-d4 | 12.07 | 152 | 193354 | 50.00 | ug/l | 0.00 |

| System Monitoring Compounds | R.T. | QIon | Response | Conc | Units | Dev(Min) |
|-----------------------------|-------|------|----------|--------|--------|----------|
| 33) 1,2-Dichloroethane-d4 | 6.05 | 65 | 154403 | 47.47 | ug/l | 0.00 |
| Spiked Amount | | | | 50.000 | | |
| Recovery | | | | = | 94.94% | |
| 35) Dibromofluoromethane | 5.49 | 113 | 132807 | 48.75 | ug/l | 0.00 |
| Spiked Amount | | | | 50.000 | | |
| Recovery | | | | = | 97.50% | |
| 50) Toluene-d8 | 8.71 | 98 | 489846 | 47.27 | ug/l | 0.00 |
| Spiked Amount | | | | 50.000 | | |
| Recovery | | | | = | 94.54% | |
| 62) 4-Bromofluorobenzene | 11.13 | 95 | 178136 | 48.20 | ug/l | 0.00 |
| Spiked Amount | | | | 50.000 | | |
| Recovery | | | | = | 96.40% | |

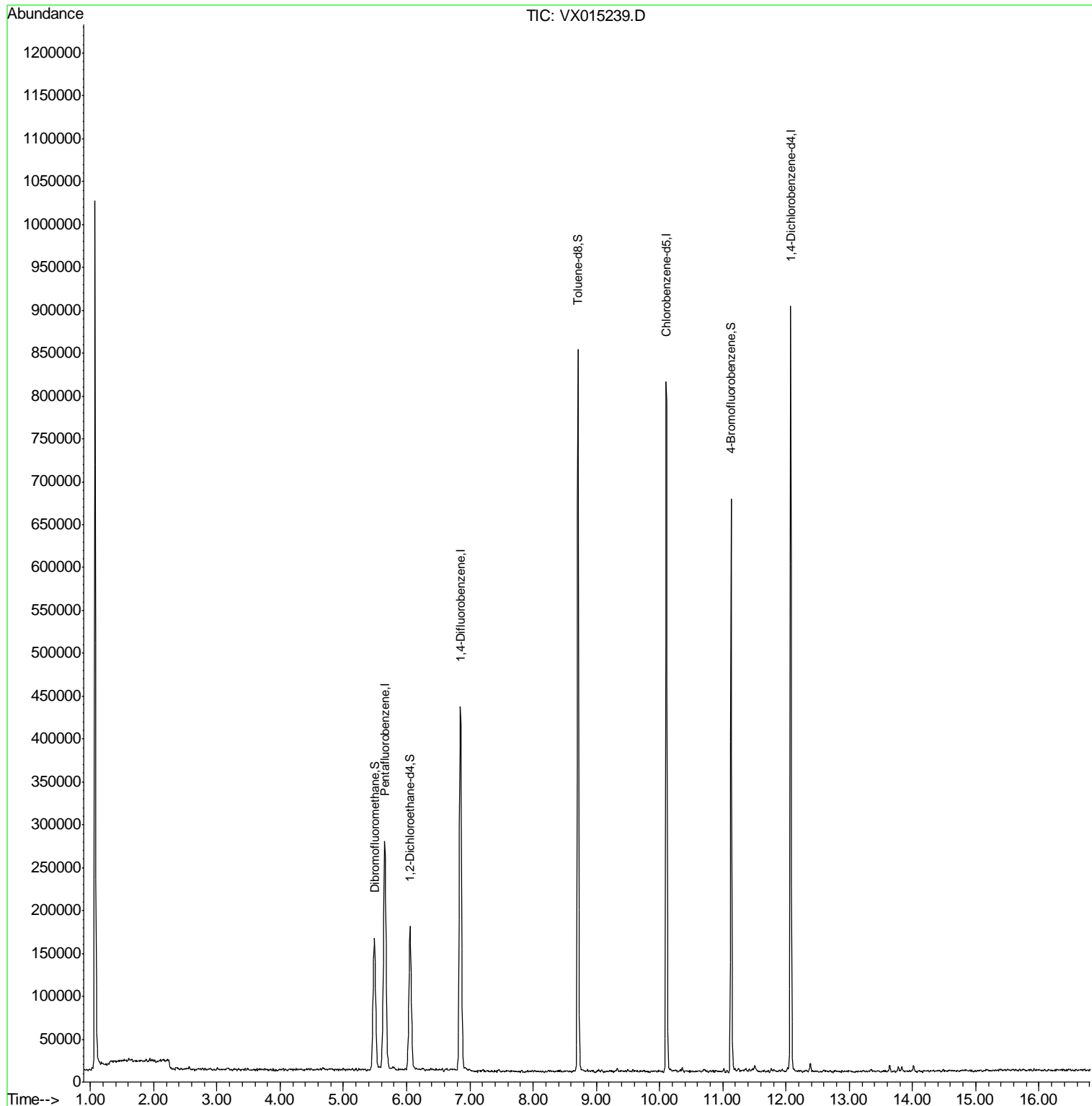
Target Compounds Qvalue

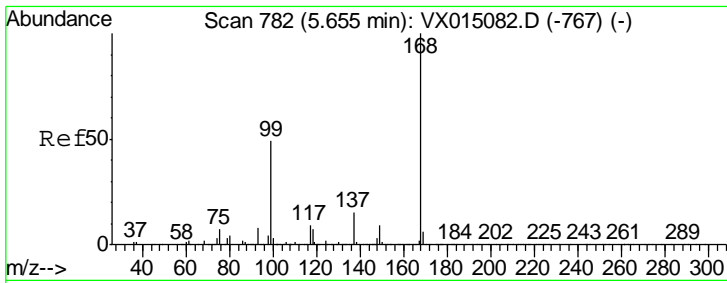
(#) = qualifier out of range (m) = manual integration (+) = signals summed

Data Path : Z:\VOASRV\HPCHEM1\MSVOA X\DATA\VX031220\
 Data File : VX015239.D
 Acq On : 12 Mar 2020 17:37
 Operator : JC/SP
 Sample : L1913-20
 Misc : 5.0mL/MSVOA X/WATER
 ALS Vial : 21 Sample Multiplier: 1

Instrument :
 MSVOA_X
 ClientSampled :
 TRIP-BLANK

Quant Time: Mar 13 04:30:47 2020
 Quant Method : Z:\VOASRV\HPCHEM1\MSVOA_X\METHOD\82X030420W.M
 Quant Title : SW846 8260
 QLast Update : Wed Mar 04 14:19:10 2020
 Response via : Initial Calibration

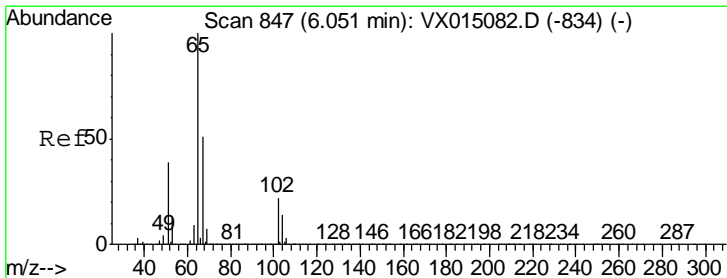
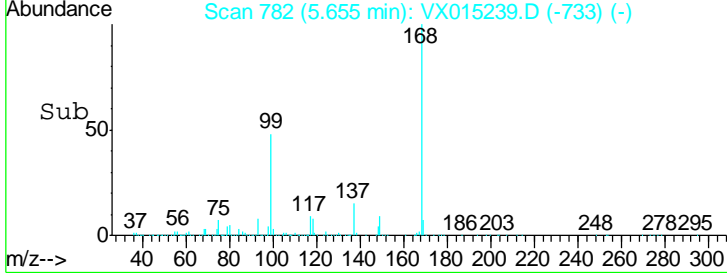
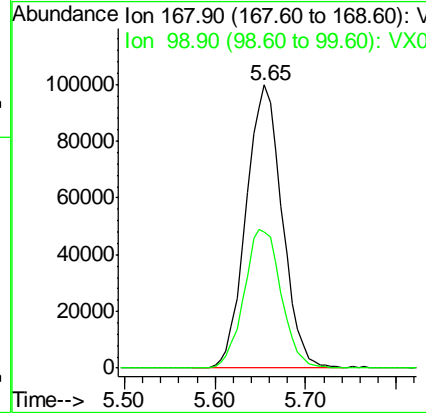
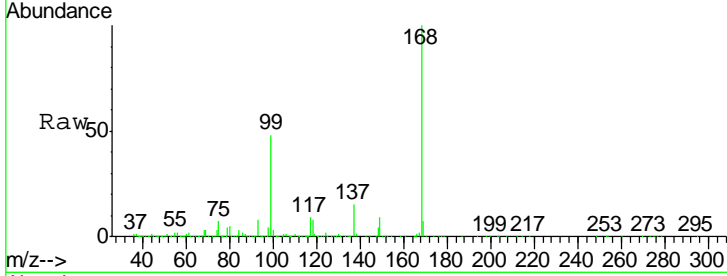




#1
 Pentafluorobenzene
 Concen: 50.000 ug/l
 RT: 5.65 min Scan# 782
 Delta R.T. 0.00 min
 Lab File: VX015239.D
 Acq: 12 Mar 2020 17:37

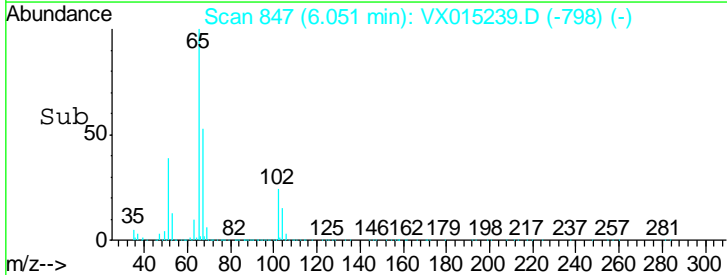
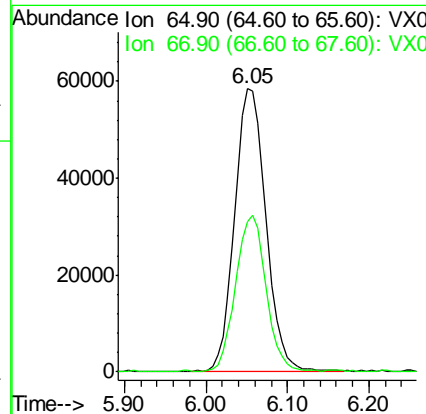
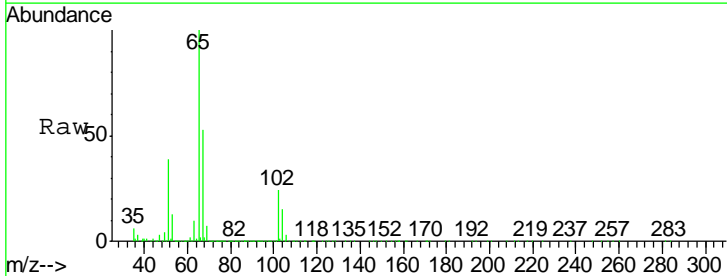
Instrument :
 MSVOA_X
ClientSampled :
 TRIP-BLANK

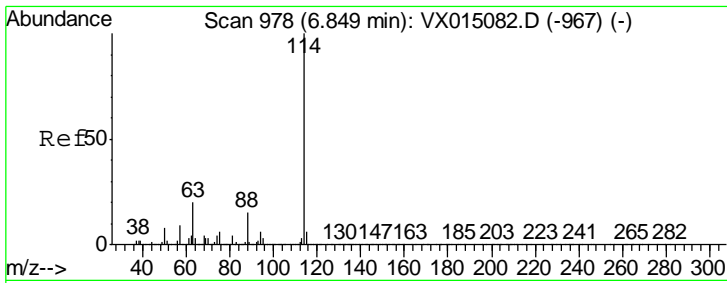
| Tgt Ion | Resp | Lower | Upper |
|---------|------|-------|-------|
| 168 | 100 | | |
| 99 | 48.1 | 39.4 | 59.2 |



#33
 1,2-Dichloroethane-d4
 Concen: 47.467 ug/l
 RT: 6.05 min Scan# 847
 Delta R.T. 0.00 min
 Lab File: VX015239.D
 Acq: 12 Mar 2020 17:37

| Tgt Ion | Resp | Lower | Upper |
|---------|------|-------|-------|
| 65 | 100 | | |
| 67 | 54.2 | 0.0 | 105.6 |

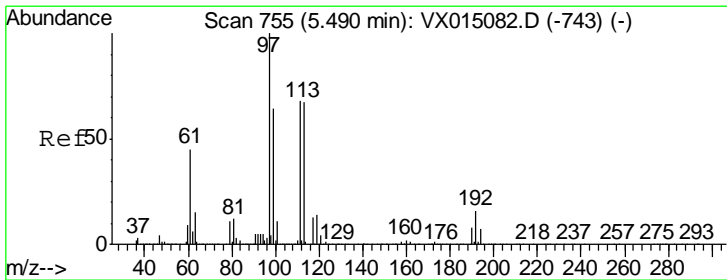
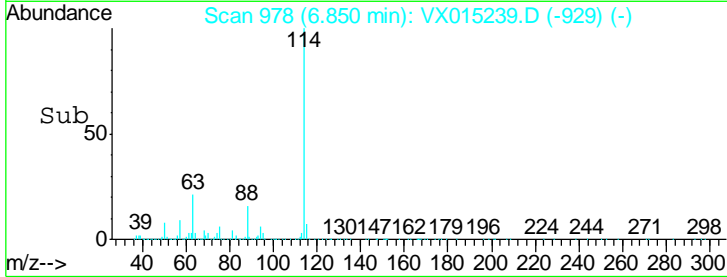
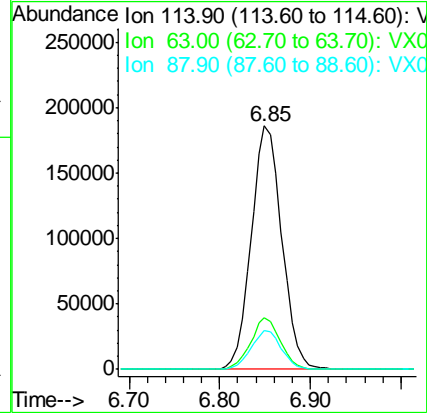
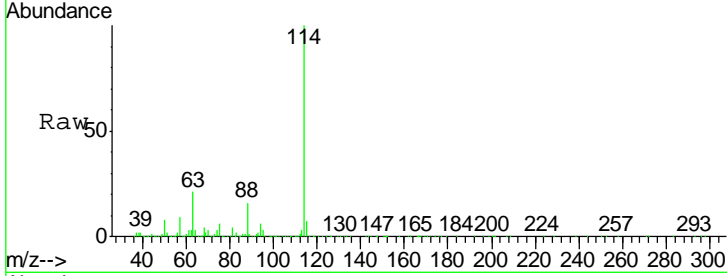




#34
 1,4-Difluorobenzene
 Concen: 50.000 ug/l
 RT: 6.85 min Scan# 978
 Delta R.T. 0.00 min
 Lab File: VX015239.D
 Acq: 12 Mar 2020 17:37

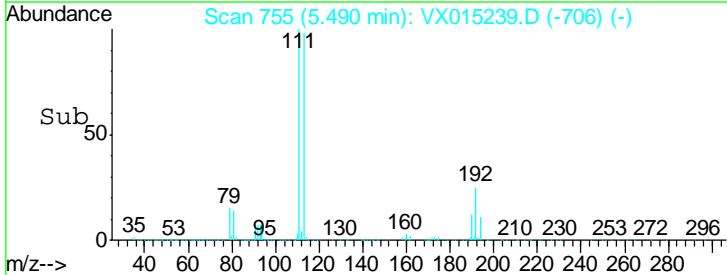
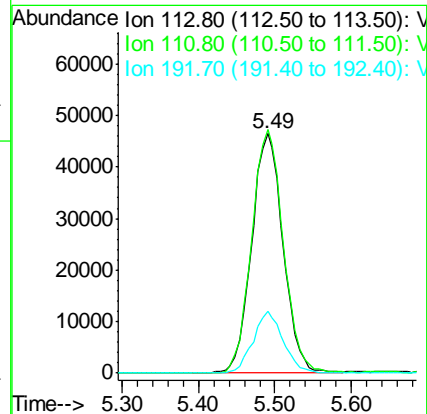
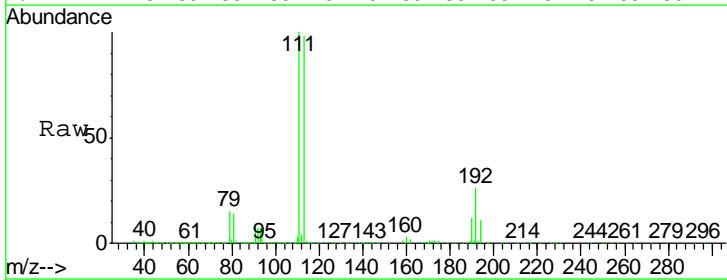
Instrument :
 MSVOA_X
 ClientSampled :
 TRIP-BLANK

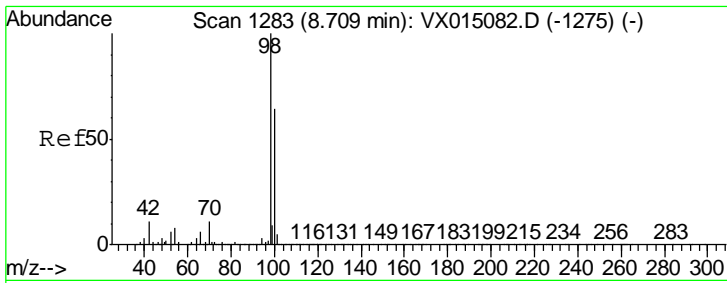
| Tgt Ion | Resp | Lower | Upper |
|---------|--------|-------|-------|
| 114 | 431808 | | |
| 63 | 21.2 | 0.0 | 40.0 |
| 88 | 15.9 | 0.0 | 30.6 |



#35
 Dibromofluoromethane
 Concen: 48.752 ug/l
 RT: 5.49 min Scan# 755
 Delta R.T. 0.00 min
 Lab File: VX015239.D
 Acq: 12 Mar 2020 17:37

| Tgt Ion | Resp | Lower | Upper |
|---------|--------|-------|-------|
| 113 | 132807 | | |
| 111 | 102.7 | 82.6 | 123.8 |
| 192 | 24.8 | 18.6 | 28.0 |

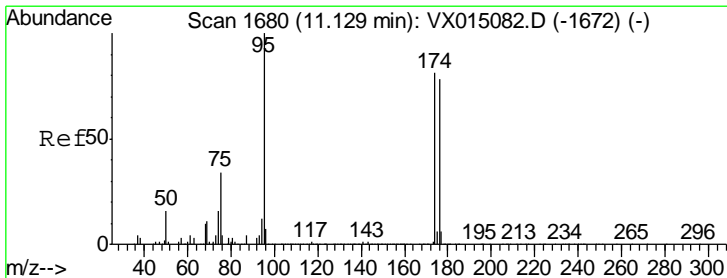
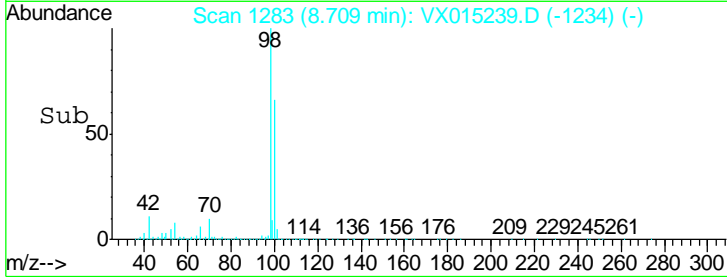
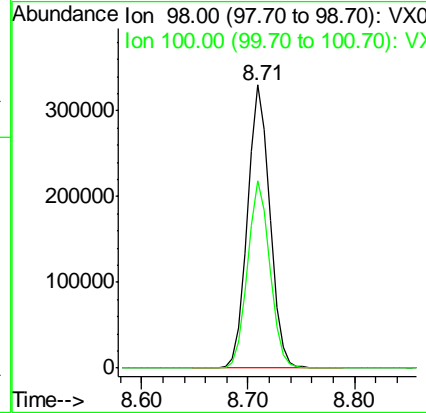
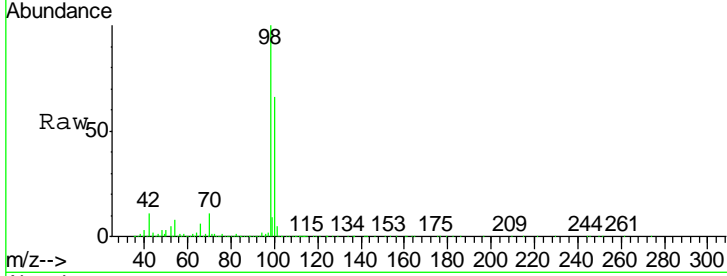




#50
 Toluene-d8
 Concen: 47.272 ug/l
 RT: 8.71 min Scan# 1283
 Delta R.T. 0.00 min
 Lab File: VX015239.D
 Acq: 12 Mar 2020 17:37

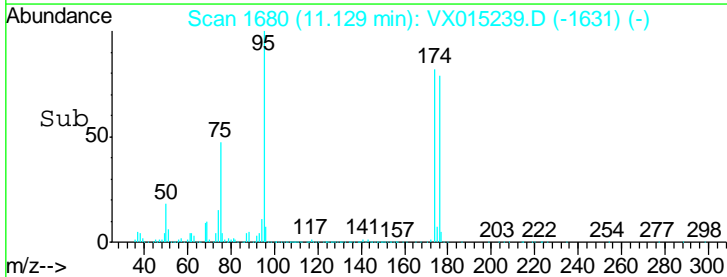
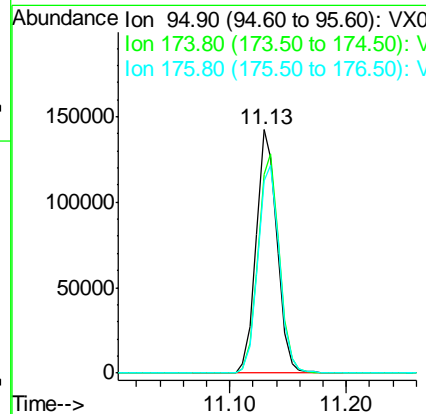
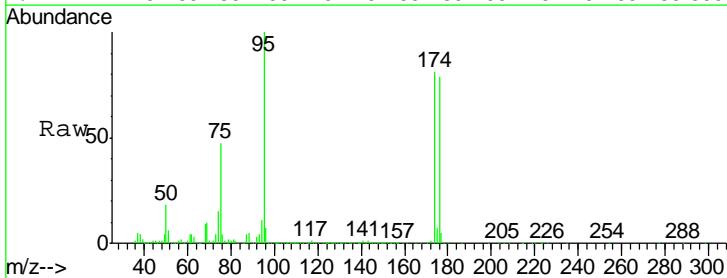
Instrument :
 MSVOA_X
 ClientSampled :
 TRIP-BLANK

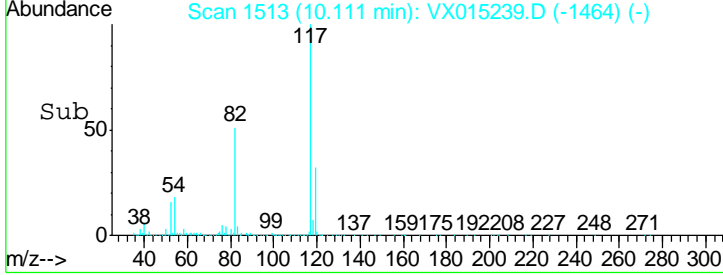
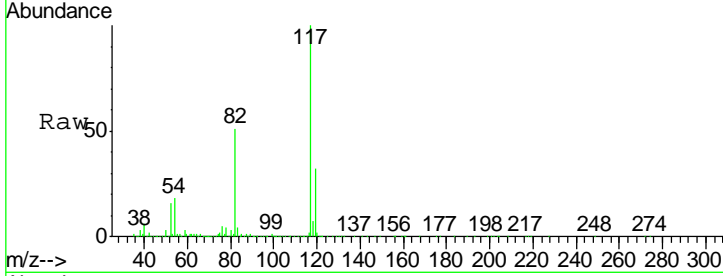
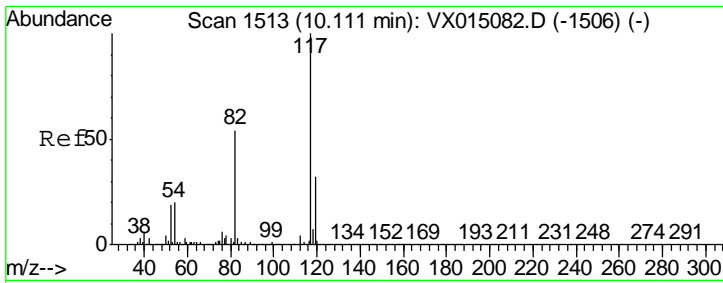
| Tgt Ion | Resp | Lower | Upper |
|---------|--------|-------|-------|
| 98 | 489846 | | |
| 100 | 65.9 | 52.4 | 78.6 |



#62
 4-Bromofluorobenzene
 Concen: 48.196 ug/l
 RT: 11.13 min Scan# 1680
 Delta R.T. 0.00 min
 Lab File: VX015239.D
 Acq: 12 Mar 2020 17:37

| Tgt Ion | Resp | Lower | Upper |
|---------|--------|-------|-------|
| 95 | 178136 | | |
| 174 | 91.8 | 0.0 | 177.6 |
| 176 | 88.3 | 0.0 | 170.2 |

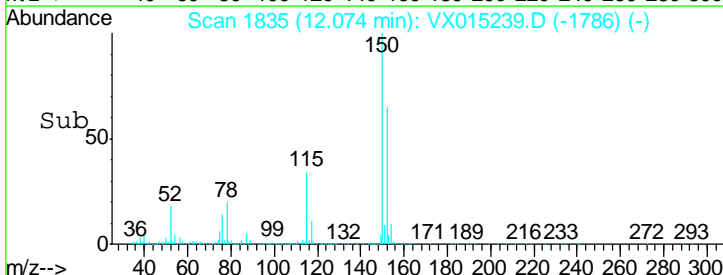
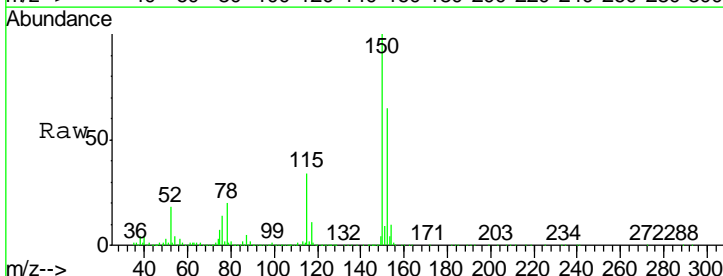
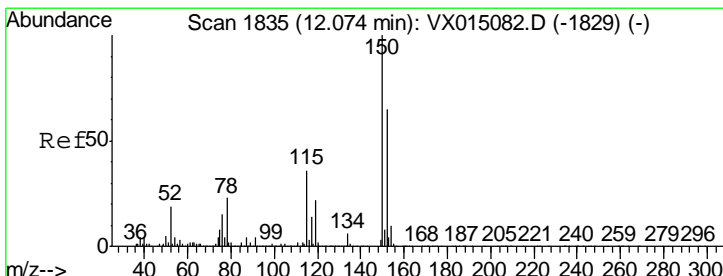
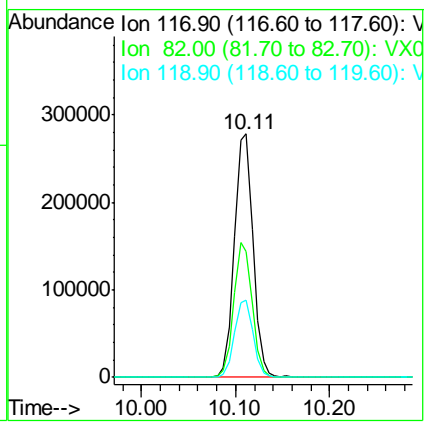




#63
 Chlorobenzene-d5
 Concen: 50.000 ug/l
 RT: 10.11 min Scan# 1513
 Delta R.T. 0.00 min
 Lab File: VX015239.D
 Acq: 12 Mar 2020 17:37

Instrument : MSVOA_X
 ClientSampled : TRIP-BLANK

| Tgt Ion | Resp | Lower | Upper |
|---------|--------|-------|-------|
| 117 | 383109 | | |
| 82 | 51.4 | 43.3 | 64.9 |
| 119 | 31.8 | 25.8 | 38.8 |



#72
 1,4-Dichlorobenzene-d4
 Concen: 50.000 ug/l
 RT: 12.07 min Scan# 1835
 Delta R.T. 0.00 min
 Lab File: VX015239.D
 Acq: 12 Mar 2020 17:37

| Tgt Ion | Resp | Lower | Upper |
|---------|--------|-------|-------|
| 152 | 193354 | | |
| 115 | 54.2 | 38.2 | 114.6 |
| 150 | 155.2 | 0.0 | 343.8 |

