

Data Path : Z:\VOASRV\HPCHEM1\MSVOA X\DATA\VX031319\
 Data File : VX008042.D
 Acq On : 13 Mar 2019 12:12
 Operator : JC/SP
 Sample : K1840-04
 Misc : 5.0mL/MSVOA X/WATER
 ALS Vial : 8 Sample Multiplier: 1

Instrument :
 MSVOA_X
ClientSampleId :
 BP-VPB201-GW-685-687

Quant Time: Mar 13 13:00:48 2019
 Quant Method : Z:\VOASRV\HPCHEM1\MSVOA_X\METHOD\82X030619W.M
 Quant Title : SW846 8260
 QLast Update : Thu Mar 07 07:33:26 2019
 Response via : Initial Calibration

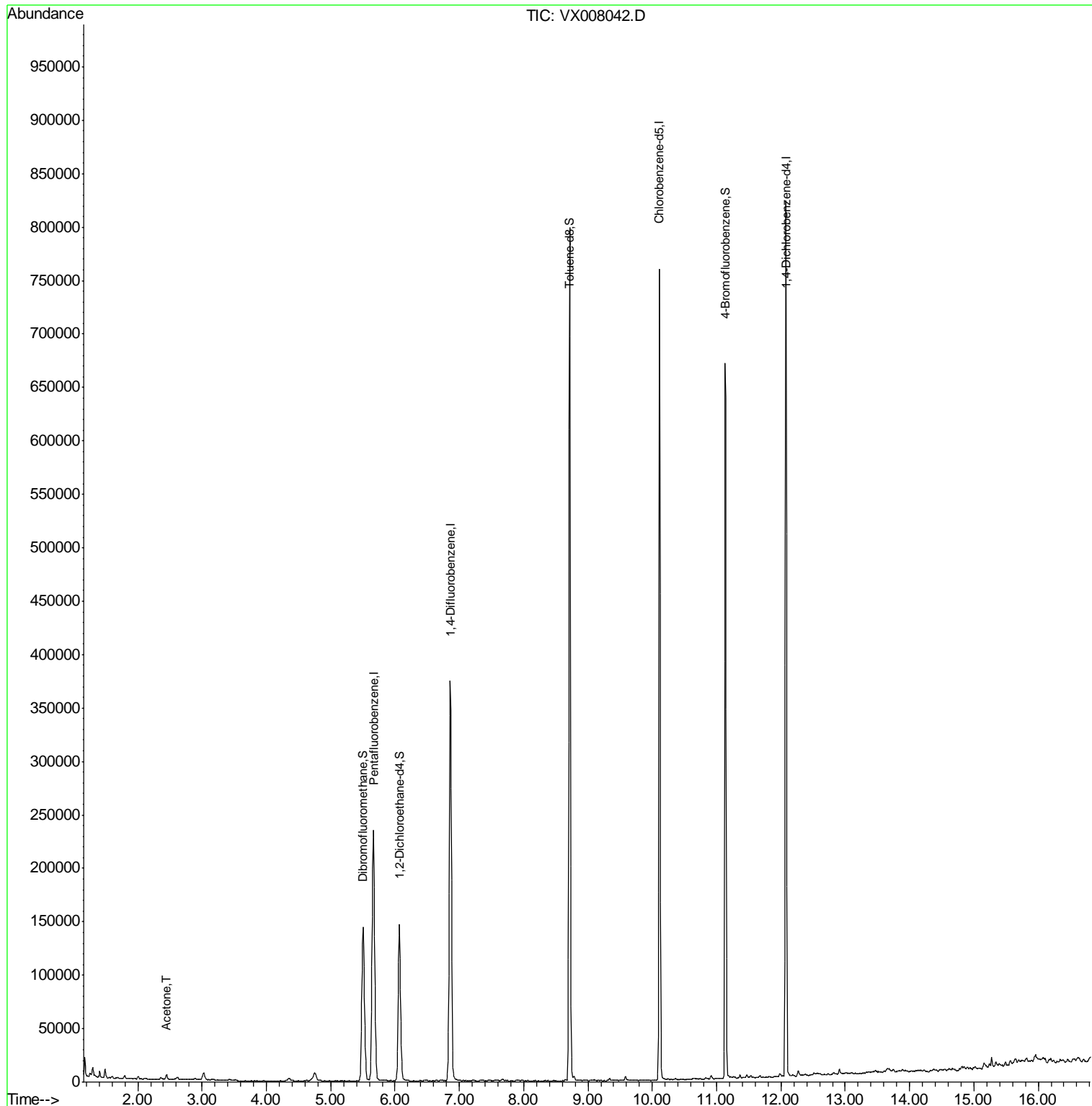
Internal Standards	R.T.	QIon	Response	Conc	Units	Dev(Min)
1) Pentafluorobenzene	5.67	168	251397	50.00	ug/l	0.00
34) 1,4-Difluorobenzene	6.86	114	393979	50.00	ug/l	0.00
63) Chlorobenzene-d5	10.12	117	375510	50.00	ug/l	0.00
72) 1,4-Dichlorobenzene-d4	12.08	152	184862	50.00	ug/l	0.00
System Monitoring Compounds						
33) 1,2-Dichloroethane-d4	6.07	65	133790	50.45	ug/l	0.00
Spiked Amount	50.000		Recovery	=	100.90%	
35) Dibromofluoromethane	5.50	113	126117	50.04	ug/l	0.00
Spiked Amount	50.000		Recovery	=	100.08%	
50) Toluene-d8	8.71	98	474818	51.30	ug/l	0.00
Spiked Amount	50.000		Recovery	=	102.60%	
62) 4-Bromofluorobenzene	11.13	95	179268	55.24	ug/l	0.00
Spiked Amount	50.000		Recovery	=	110.48%	
Target Compounds						
16) Acetone	2.45	43	5094	3.319	ug/l #	87

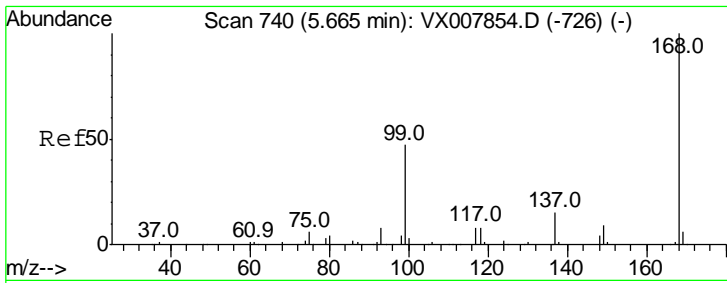
(#) = qualifier out of range (m) = manual integration (+) = signals summed

Data Path : Z:\VOASRV\HPCHEM1\MSVOA X\DATA\VX031319\
 Data File : VX008042.D
 Acq On : 13 Mar 2019 12:12
 Operator : JC/SP
 Sample : K1840-04
 Misc : 5.0mL/MSVOA X/WATER
 ALS Vial : 8 Sample Multiplier: 1

Instrument :
 MSVOA_X
 Client Sampled :
 BP-VPB201-GW-685-687

Quant Time: Mar 13 13:00:48 2019
 Quant Method : Z:\VOASRV\HPCHEM1\MSVOA_X\METHOD\82X030619W.M
 Quant Title : SW846 8260
 QLast Update : Thu Mar 07 07:33:26 2019
 Response via : Initial Calibration

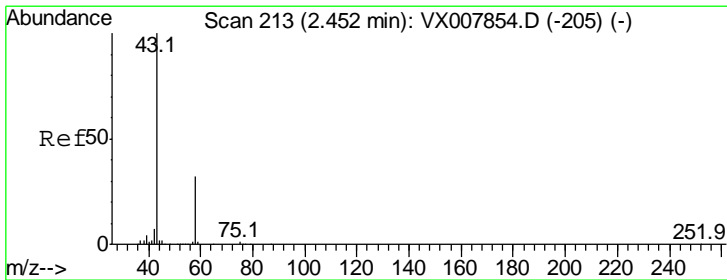
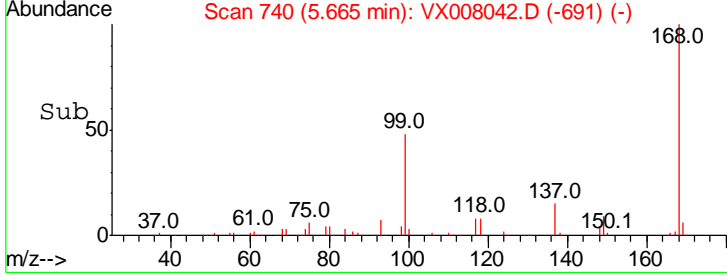
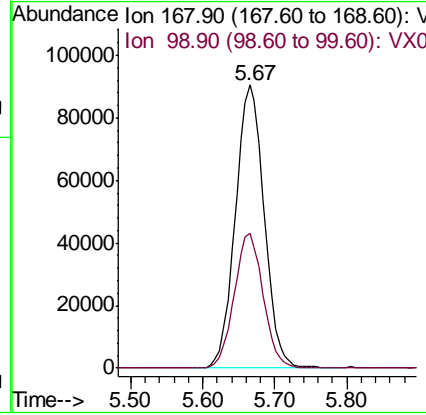
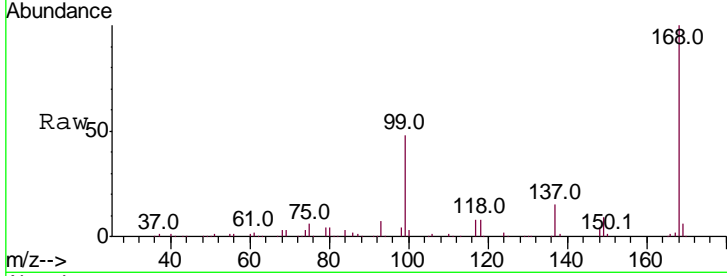




#1
 Pentafluorobenzene
 Concen: 50.000 ug/l
 RT: 5.67 min Scan# 740
 Delta R.T. 0.00 min
 Lab File: VX008042.D
 Acq: 13 Mar 2019 12:12

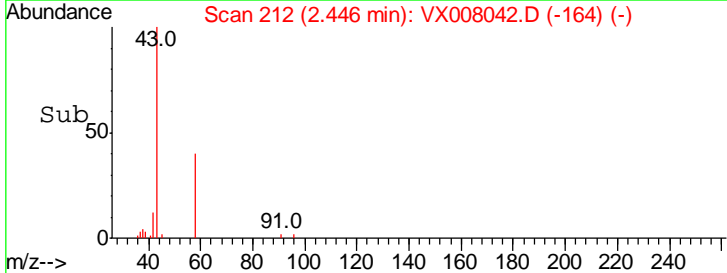
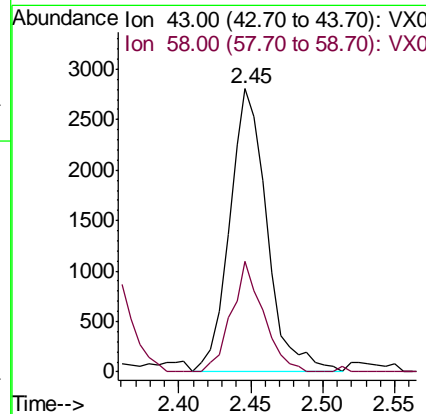
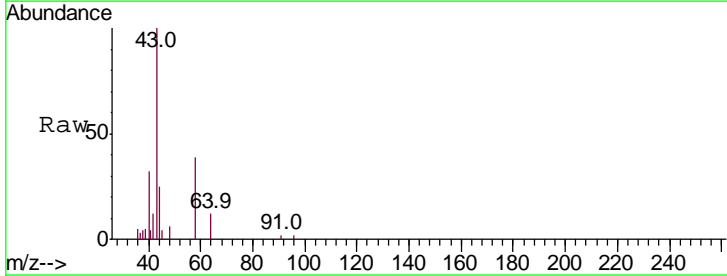
Instrument :
 MSVOA_X
ClientSampleId :
 BP-VPB201-GW-685-687

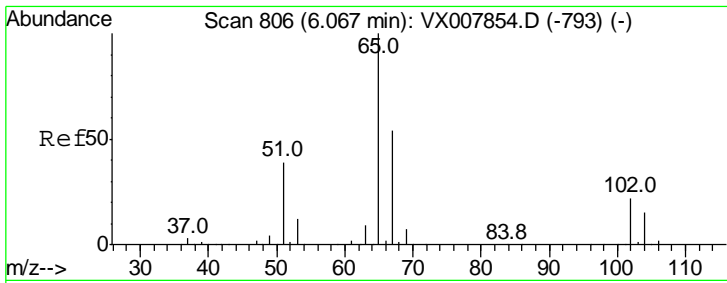
Tgt Ion: 168 Resp: 251397
 Ion Ratio Lower Upper
 168 100
 99 47.7 37.6 56.4



#16
 Acetone
 Concen: 3.319 ug/l
 RT: 2.45 min Scan# 212
 Delta R.T. -0.01 min
 Lab File: VX008042.D
 Acq: 13 Mar 2019 12:12

Tgt Ion: 43 Resp: 5094
 Ion Ratio Lower Upper
 43 100
 58 38.9 25.5 38.3#

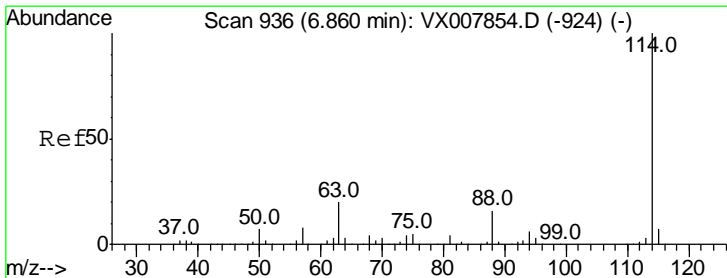
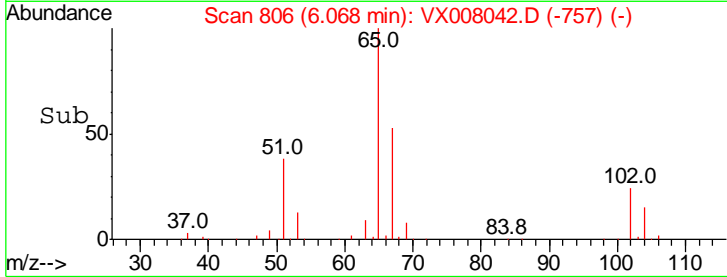
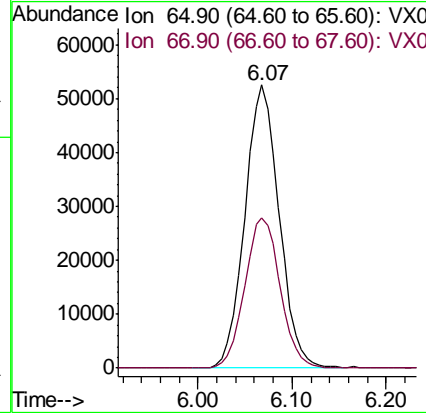
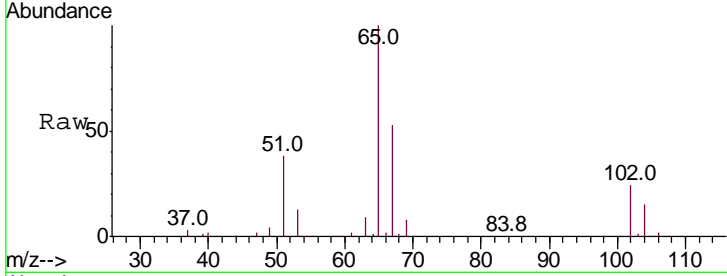




#33
 1,2-Dichloroethane-d4
 Concen: 50.449 ug/l
 RT: 6.07 min Scan# 806
 Delta R.T. 0.00 min
 Lab File: VX008042.D
 Acq: 13 Mar 2019 12:12

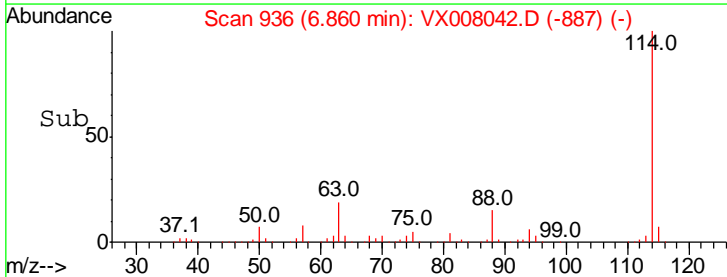
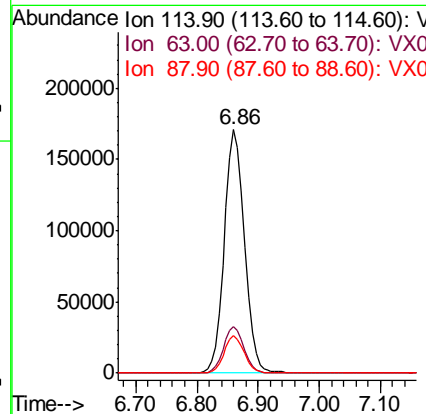
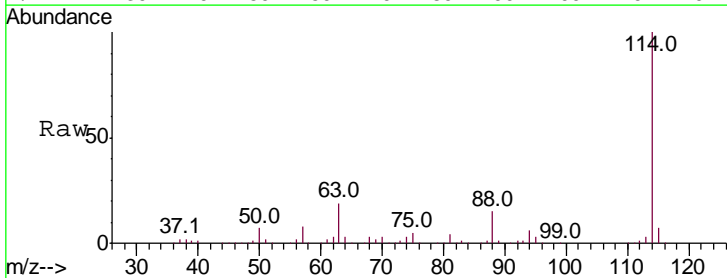
Instrument :
 MSVOA_X
 ClientSampleId :
 BP-VPB201-GW-685-687

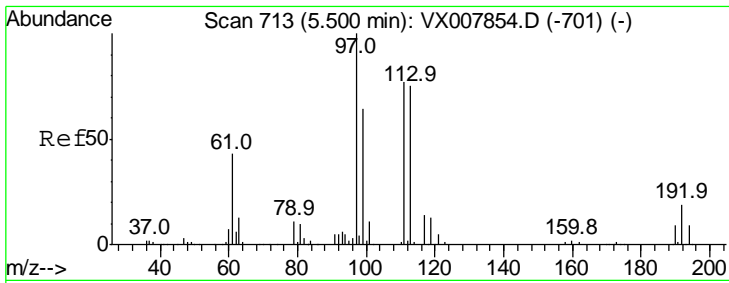
Tgt Ion	Resp	Lower	Upper
65	100		
67	54.9	0.0	110.0



#34
 1,4-Difluorobenzene
 Concen: 50.000 ug/l
 RT: 6.86 min Scan# 936
 Delta R.T. 0.00 min
 Lab File: VX008042.D
 Acq: 13 Mar 2019 12:12

Tgt Ion	Resp	Lower	Upper
114	100		
63	19.3	0.0	39.8
88	15.4	0.0	31.4

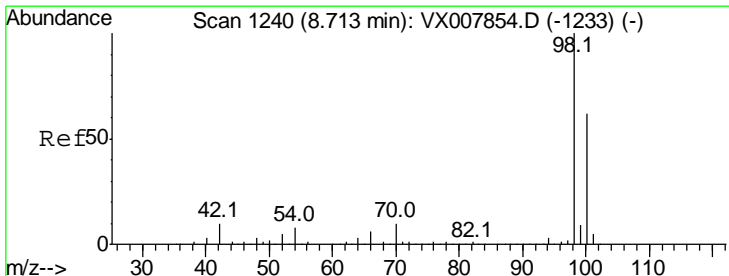
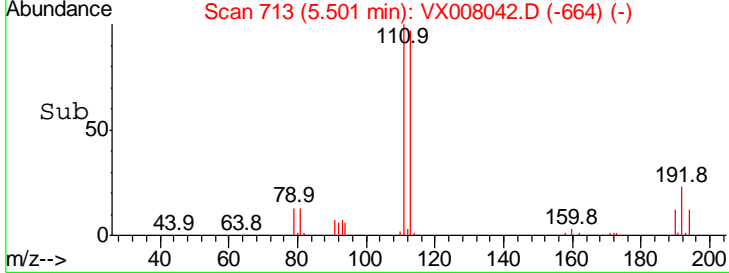
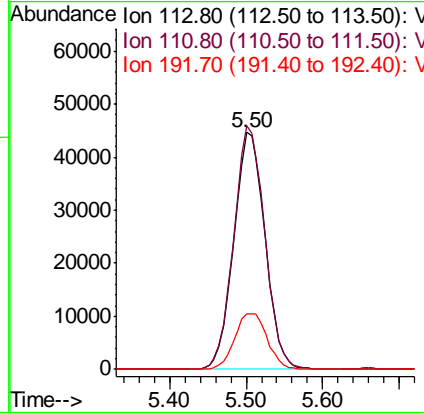
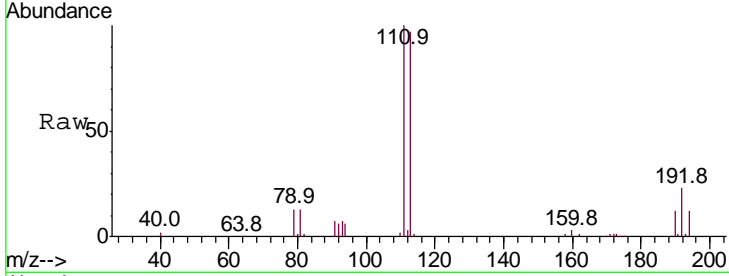




#35
 Dibromofluoromethane
 Concen: 50.043 ug/l
 RT: 5.50 min Scan# 713
 Delta R.T. 0.00 min
 Lab File: VX008042.D
 Acq: 13 Mar 2019 12:12

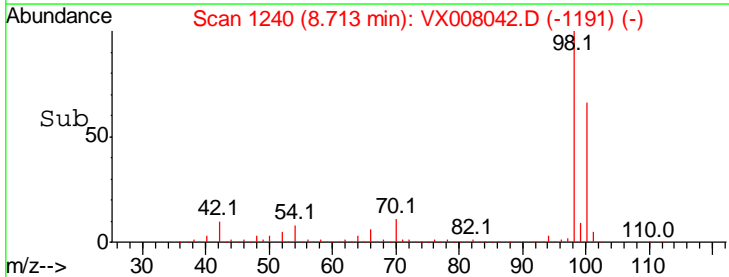
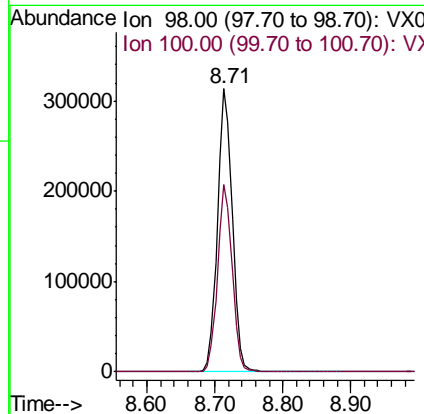
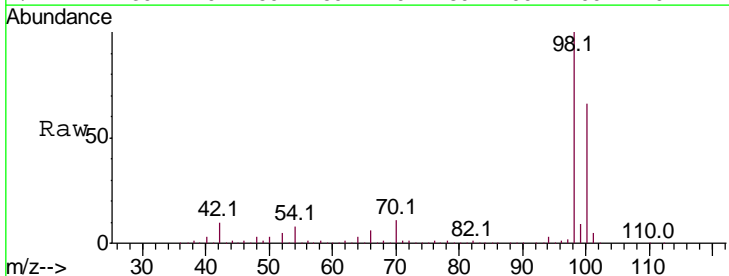
Instrument :
 MSVOA_X
ClientSampled :
 BP-VPB201-GW-685-687

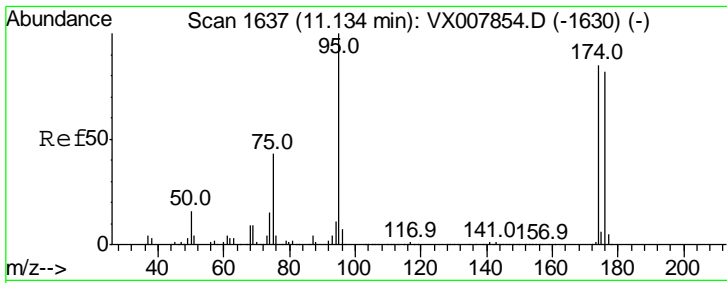
Tgt Ion	Resp	Lower	Upper
113	126117		
111	102.2	81.4	122.0
192	24.6	19.4	29.0



#50
 Toluene-d8
 Concen: 51.302 ug/l
 RT: 8.71 min Scan# 1240
 Delta R.T. 0.00 min
 Lab File: VX008042.D
 Acq: 13 Mar 2019 12:12

Tgt Ion	Resp	Lower	Upper
98	474818		
100	65.3	51.7	77.5

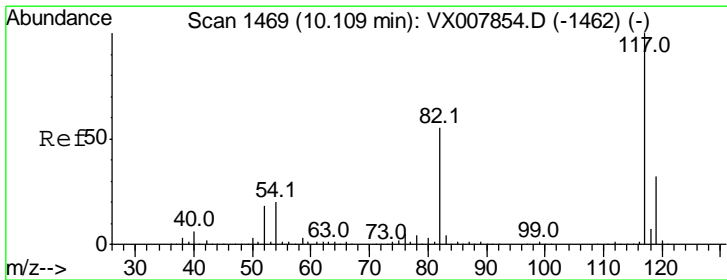
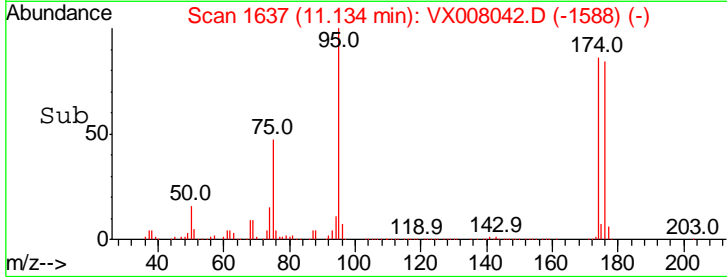
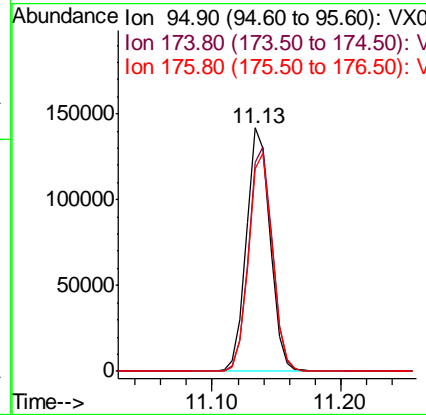
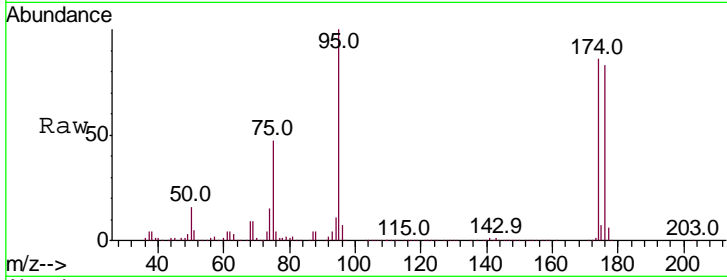




#62
 4-Bromofluorobenzene
 Concen: 55.245 ug/l
 RT: 11.13 min Scan# 1637
 Delta R.T. 0.00 min
 Lab File: VX008042.D
 Acq: 13 Mar 2019 12:12

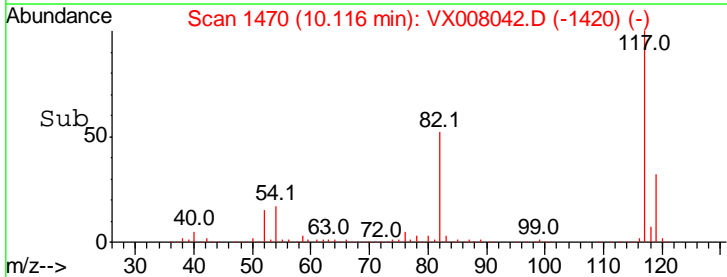
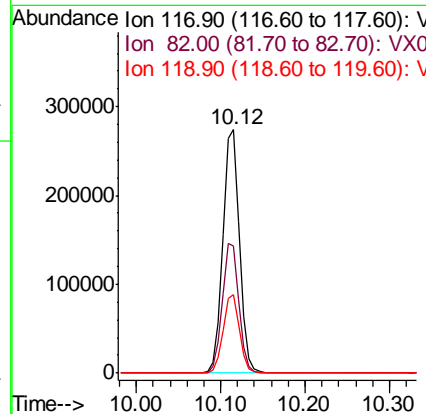
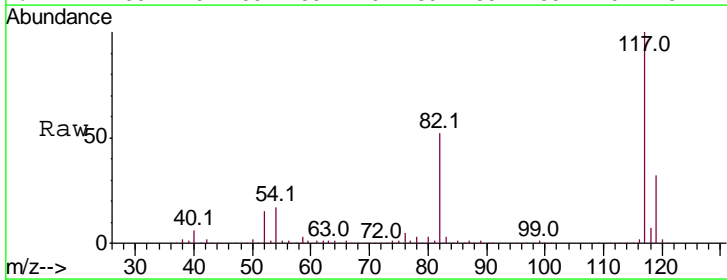
Instrument : MSVOA_X
 ClientSampled : BP-VPB201-GW-685-687

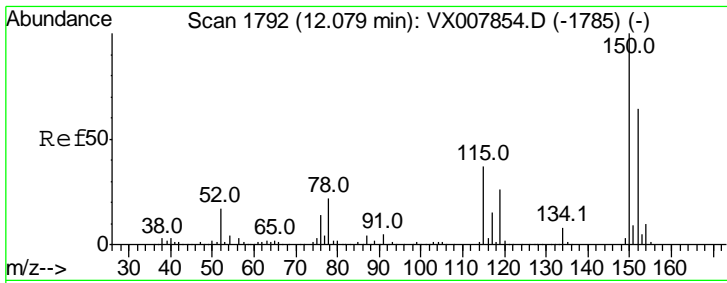
Tgt Ion	Resp	Lower	Upper
95	179268		
174	91.9	0.0	182.8
176	89.7	0.0	178.0



#63
 Chlorobenzene-d5
 Concen: 50.000 ug/l
 RT: 10.12 min Scan# 1470
 Delta R.T. 0.01 min
 Lab File: VX008042.D
 Acq: 13 Mar 2019 12:12

Tgt Ion	Resp	Lower	Upper
117	375510		
82	52.1	44.3	66.5
119	32.1	25.3	37.9





#72
 1,4-Dichlorobenzene-d4
 Concen: 50.000 ug/l
 RT: 12.08 min Scan# 1792
 Delta R.T. 0.00 min
 Lab File: VX008042.D
 Acq: 13 Mar 2019 12:12

Instrument : MSVOA_X
 ClientSampled : BP-VPB201-GW-685-687

Tot Ion:152 Resp: 184862

Ion	Ratio	Lower	Upper
152	100		
115	54.9	38.6	115.7
150	156.3	0.0	348.4

