

Data Path : Z:\voasrv\HPCHEM1\MSVOA_X\Data\VX031323\
 Data File : VX034428.D
 Acq On : 13 Mar 2023 13:27
 Operator : JC/MD
 Sample : 01879-14 20X
 Misc : 5.0mL/MSVOA_X/WATER
 ALS Vial : 8 Sample Multiplier: 1

Instrument :
 MSVOA_X
 ClientSampleId :

Quant Time: Mar 14 02:24:13 2023
 Quant Method : Z:\voasrv\HPCHEM1\MSVOA_X\Method\82X031023W.M
 Quant Title : SW846 8260
 QLast Update : Mon Mar 13 10:29:32 2023
 Response via : Initial Calibration

Compound	R.T.	QIon	Response	Conc	Units	Dev(Min)

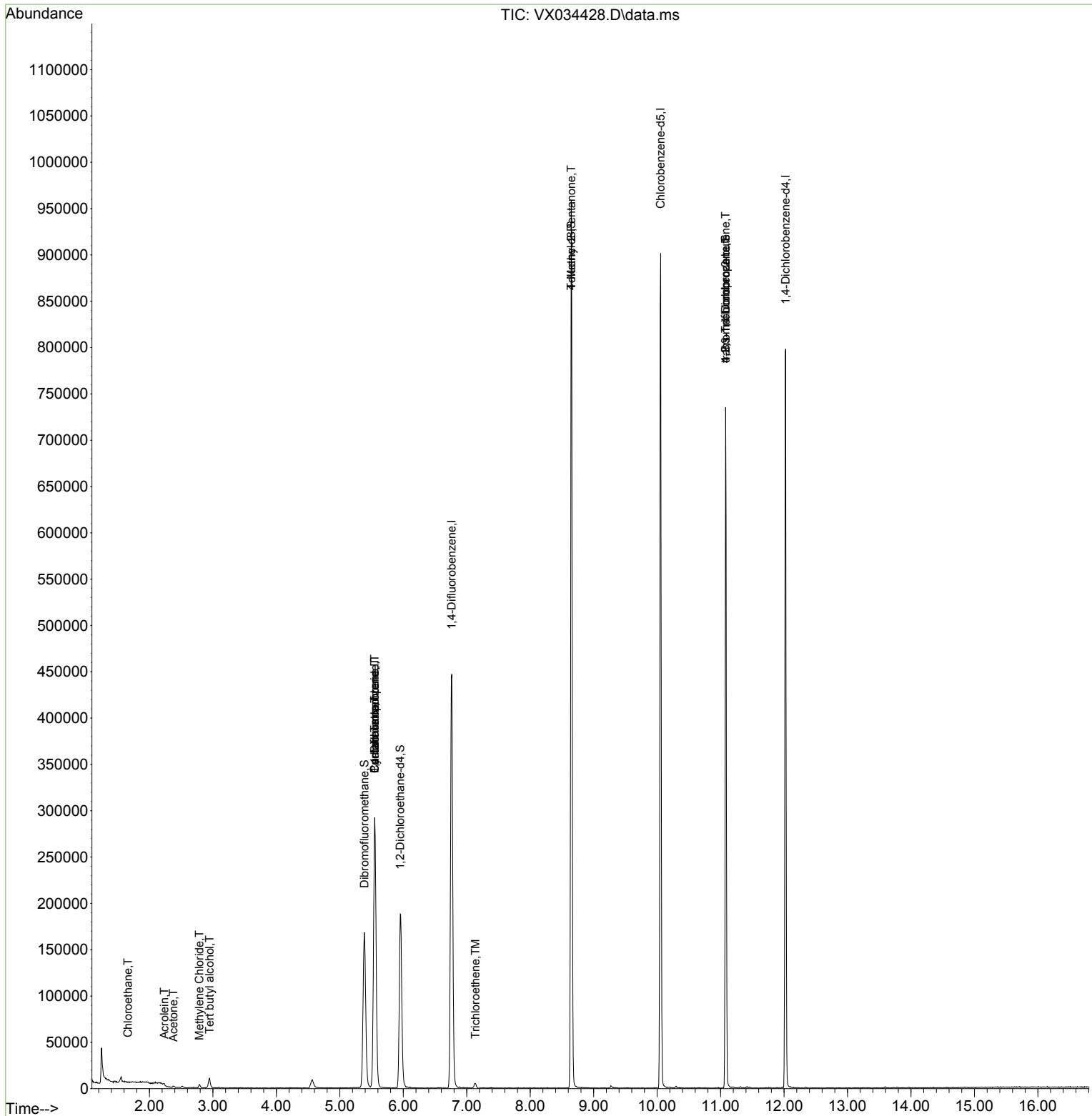
Internal Standards						
1) Pentafluorobenzene	5.550	168	278049	50.000	ug/l	0.00
34) 1,4-Difluorobenzene	6.763	114	463303	50.000	ug/l	0.00
63) Chlorobenzene-d5	10.055	117	394810	50.000	ug/l	0.00
72) 1,4-Dichlorobenzene-d4	12.024	152	167588	50.000	ug/l	0.00
System Monitoring Compounds						
33) 1,2-Dichloroethane-d4	5.952	65	178638	44.162	ug/l	0.00
Spiked Amount	50.000	Range 78 - 117	Recovery =	88.320%		
35) Dibromofluoromethane	5.385	113	146737	47.970	ug/l	0.00
Spiked Amount	50.000	Range 75 - 124	Recovery =	95.940%		
50) Toluene-d8	8.647	98	553888	48.505	ug/l	0.00
Spiked Amount	50.000	Range 92 - 112	Recovery =	97.000%		
62) 4-Bromofluorobenzene	11.079	95	185715	40.263	ug/l	0.00
Spiked Amount	50.000	Range 83 - 123	Recovery =	80.520%#		
Target Compounds						
					Qvalue	
3) Chloromethane	1.313	50	678	Below Cal	#	86
6) Chloroethane	1.660	64	443	0.218	ug/l	99
11) Tert butyl alcohol	2.947	59	5893	6.996	ug/l #	74
13) Acrolein	2.233	56	305	0.458	ug/l #	72
16) Acetone	2.380	43	1822	0.956	ug/l	100
20) Methylene Chloride	2.788	84	1398	0.378	ug/l #	84
31) Cyclohexane	5.550	56	6265	1.104	ug/l #	1
36) 1,1-Dichloropropene	5.550	75	21285	4.530	ug/l #	51
38) Carbon Tetrachloride	5.550	117	27359	5.853	ug/l #	17
44) Trichloroethene	7.135	130	2392	0.670	ug/l	95
51) 4-Methyl-2-Pentanone	8.647	43	2841	0.563	ug/l #	1
76) 1,2,3-Trichloropropane	11.079	75	95615	24.848	ug/l #	34
81) trans-1,4-Dichloro-2-b...	11.079	75	95615	67.221	ug/l #	8

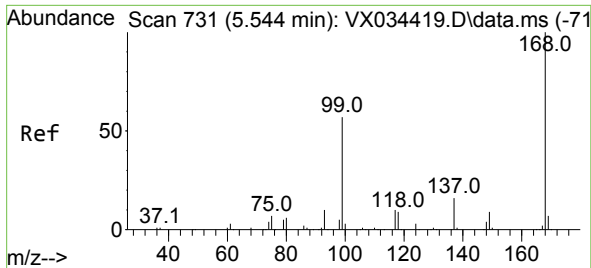
(#) = qualifier out of range (m) = manual integration (+) = signals summed

Data Path : Z:\voasrv\HPCHEM1\MSVOA_X\Data\VX031323\
 Data File : VX034428.D
 Acq On : 13 Mar 2023 13:27
 Operator : JC/MD
 Sample : 01879-14 20X
 Misc : 5.0mL/MSVOA_X/WATER
 ALS Vial : 8 Sample Multiplier: 1

Instrument :
 MSVOA_X
 ClientSampleId :

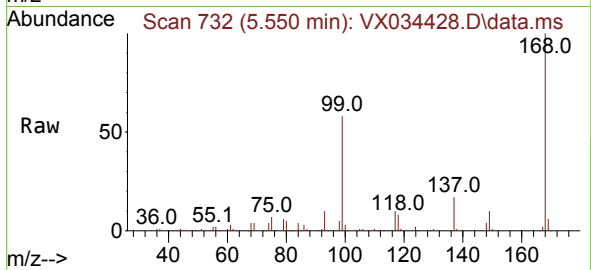
Quant Time: Mar 14 02:24:13 2023
 Quant Method : Z:\voasrv\HPCHEM1\MSVOA_X\Method\82X031023W.M
 Quant Title : SW846 8260
 QLast Update : Mon Mar 13 10:29:32 2023
 Response via : Initial Calibration



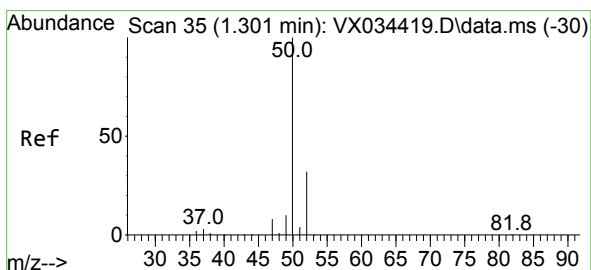
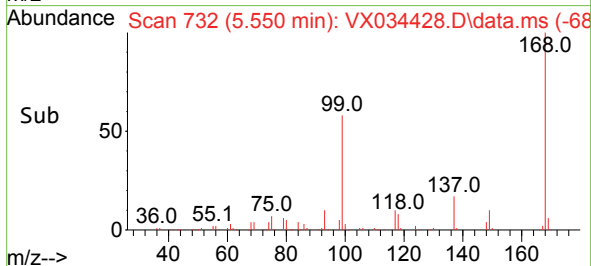
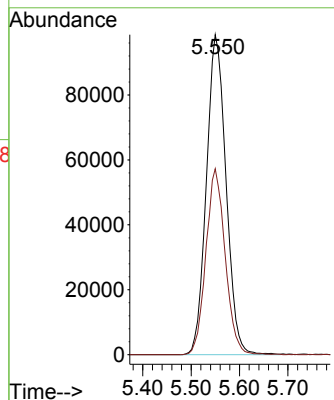


#1
 Pentafluorobenzene
 Concen: 50.000 ug/l
 RT: 5.550 min Scan# 71
 Delta R.T. 0.006 min
 Lab File: VX034428.D
 Acq: 13 Mar 2023 13:27

Instrument :
 MSVOA_X
 ClientSampleId :

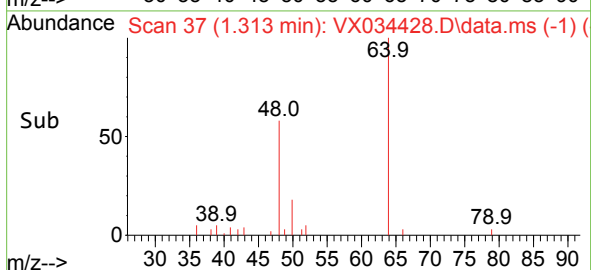
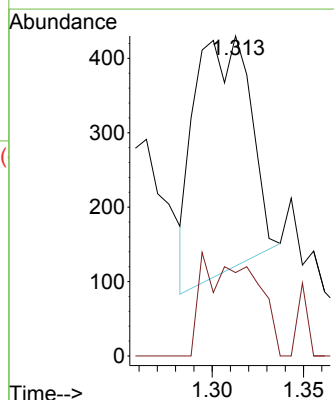
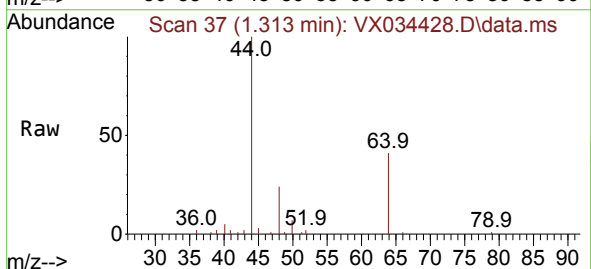


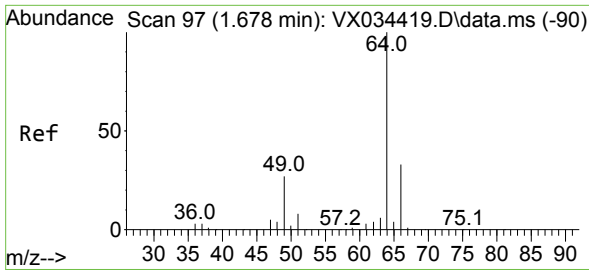
Tgt Ion:168 Resp: 278049
 Ion Ratio Lower Upper
 168 100
 99 58.1 45.7 68.5



#3
 Chloromethane
 Concen: Below Cal
 RT: 1.313 min Scan# 37
 Delta R.T. 0.012 min
 Lab File: VX034428.D
 Acq: 13 Mar 2023 13:27

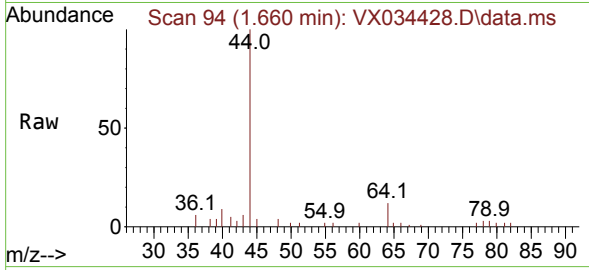
Tgt Ion: 50 Resp: 678
 Ion Ratio Lower Upper
 50 100
 52 40.1 25.9 38.9#



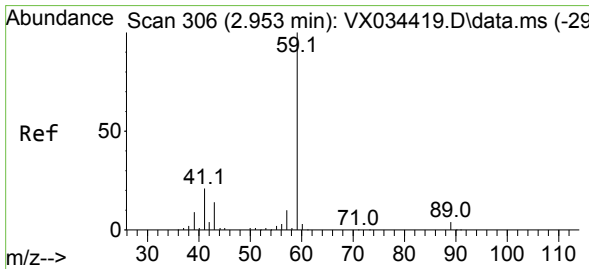
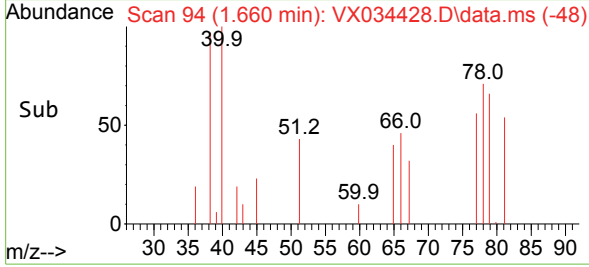
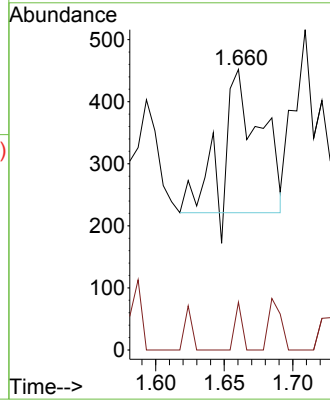


#6
 Chloroethane
 Concen: 0.218 ug/l
 RT: 1.660 min Scan# 94
 Delta R.T. -0.018 min
 Lab File: VX034428.D
 Acq: 13 Mar 2023 13:27

Instrument :
 MSVOA_X
 ClientSampleId :

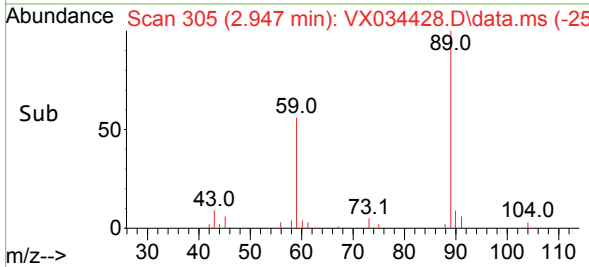
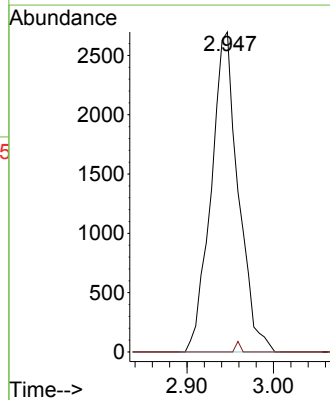
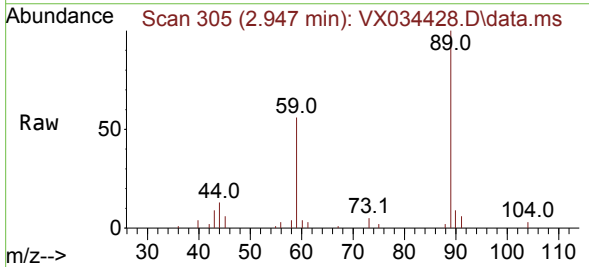


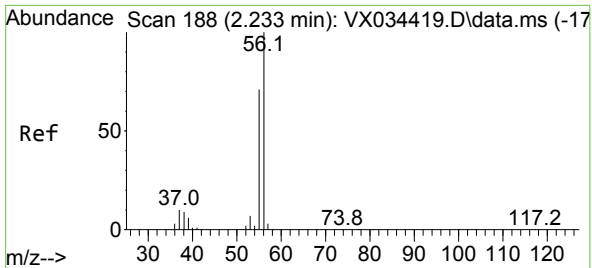
Tgt Ion: 64 Resp: 443
 Ion Ratio Lower Upper
 64 100
 66 33.3 26.2 39.4



#11
 Tert butyl alcohol
 Concen: 6.996 ug/l
 RT: 2.947 min Scan# 305
 Delta R.T. -0.006 min
 Lab File: VX034428.D
 Acq: 13 Mar 2023 13:27

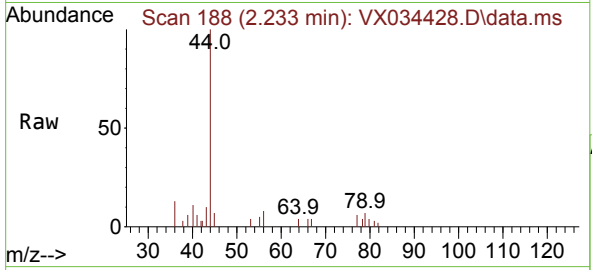
Tgt Ion: 59 Resp: 5893
 Ion Ratio Lower Upper
 59 100
 57 0.6 8.1 12.1#



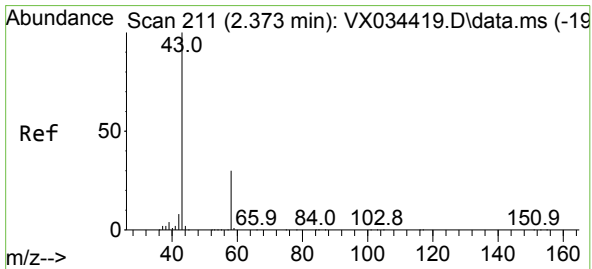
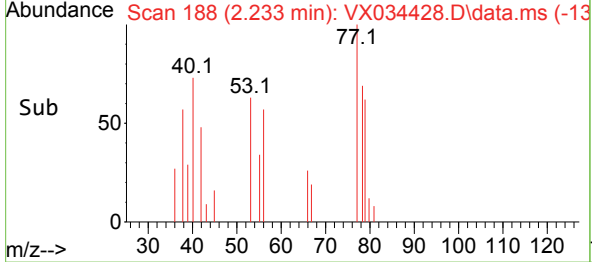
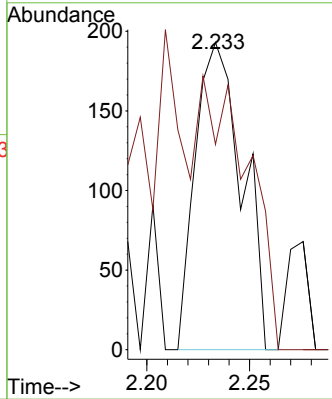


#13
 Acrolein
 Concen: 0.458 ug/l
 RT: 2.233 min Scan# 11
 Delta R.T. 0.000 min
 Lab File: VX034428.D
 Acq: 13 Mar 2023 13:27

Instrument : MSVOA_X
 ClientSampleId :

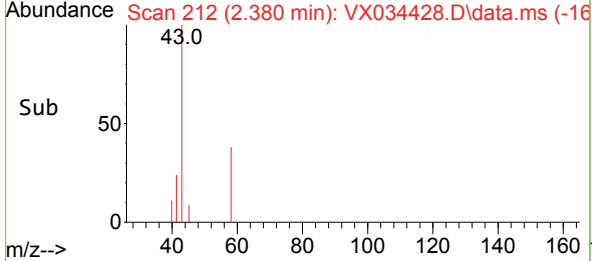
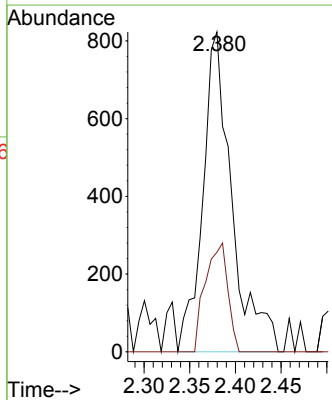
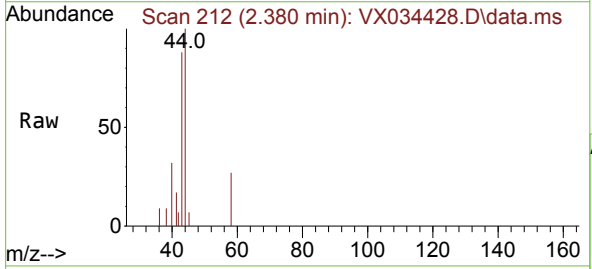


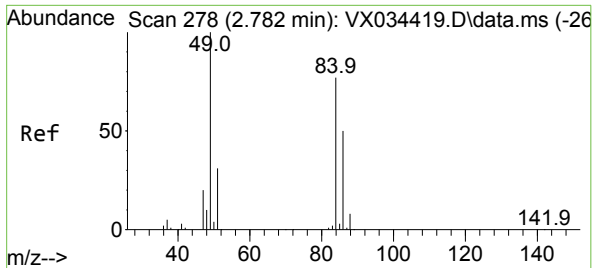
Tgt Ion: 56 Resp: 305
 Ion Ratio Lower Upper
 56 100
 55 93.8 56.6 85.0#



#16
 Acetone
 Concen: 0.956 ug/l
 RT: 2.380 min Scan# 212
 Delta R.T. 0.006 min
 Lab File: VX034428.D
 Acq: 13 Mar 2023 13:27

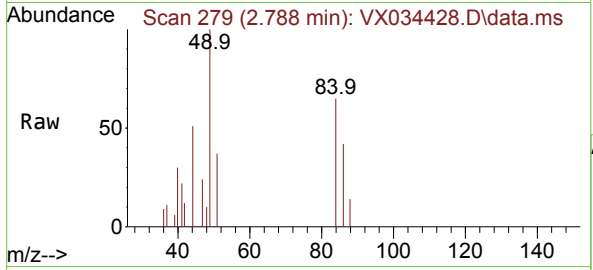
Tgt Ion: 43 Resp: 1822
 Ion Ratio Lower Upper
 43 100
 58 31.1 24.7 37.1





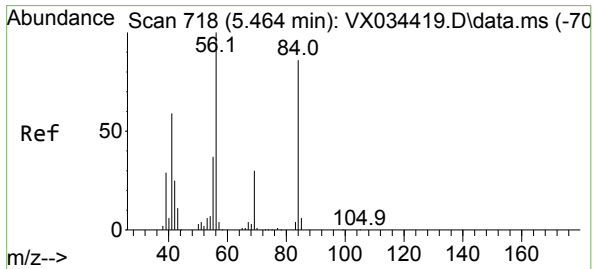
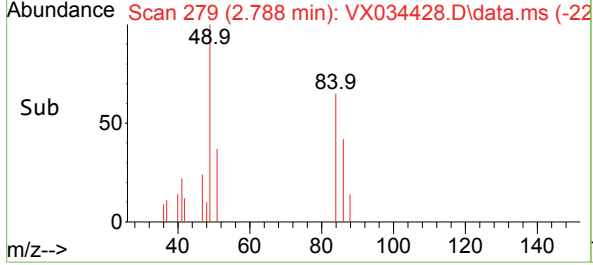
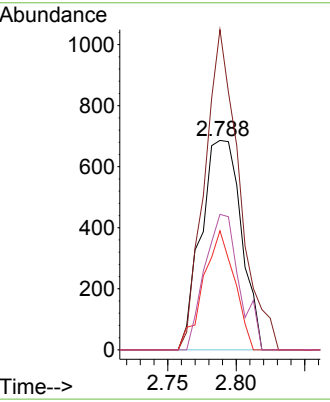
#20
 Methylene Chloride
 Concen: 0.378 ug/l
 RT: 2.788 min Scan# 21
 Delta R.T. 0.006 min
 Lab File: VX034428.D
 Acq: 13 Mar 2023 13:27

Instrument : MSVOA_X
 ClientSampleId :



Tgt Ion: 84 Resp: 1398

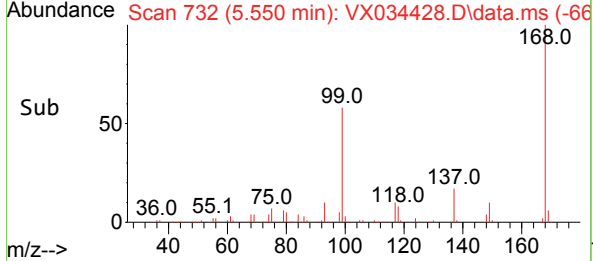
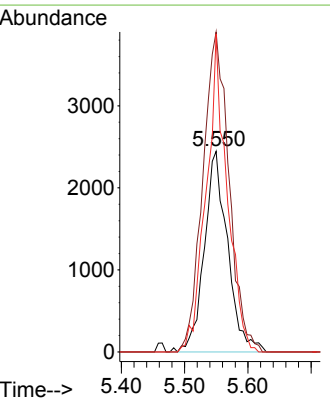
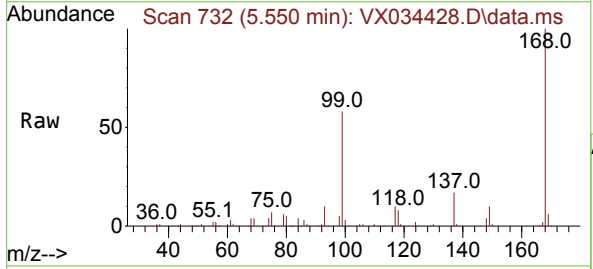
Ion	Ratio	Lower	Upper
84	100		
49	152.9	103.8	155.8
51	56.9	31.8	47.8#
86	64.7	51.4	77.2

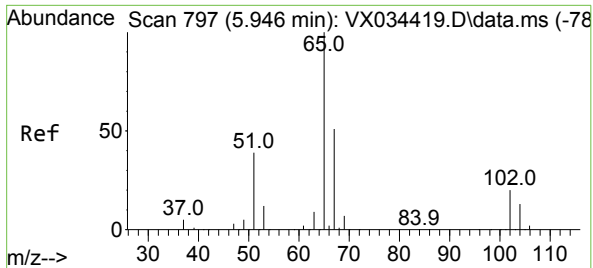


#31
 Cyclohexane
 Concen: 1.104 ug/l
 RT: 5.550 min Scan# 732
 Delta R.T. 0.085 min
 Lab File: VX034428.D
 Acq: 13 Mar 2023 13:27

Tgt Ion: 56 Resp: 6265

Ion	Ratio	Lower	Upper
56	100		
69	159.4	23.7	35.5#
84	158.4	68.5	102.7#

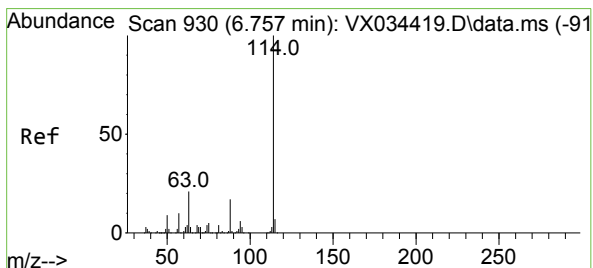
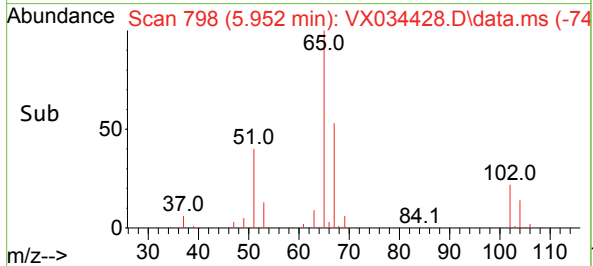
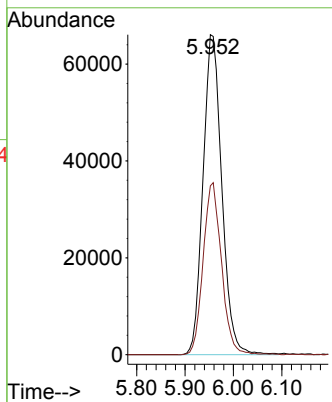
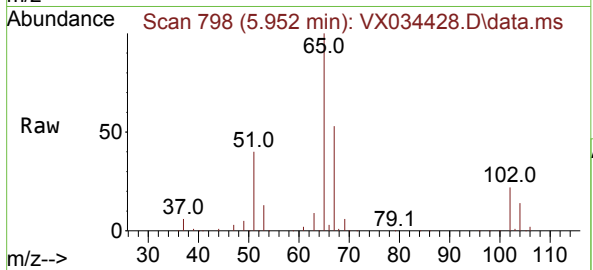




#33
 1,2-Dichloroethane-d4
 Concen: 44.162 ug/l
 RT: 5.952 min Scan# 798
 Delta R.T. 0.006 min
 Lab File: VX034428.D
 Acq: 13 Mar 2023 13:27

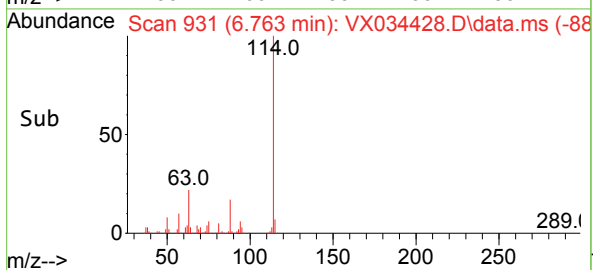
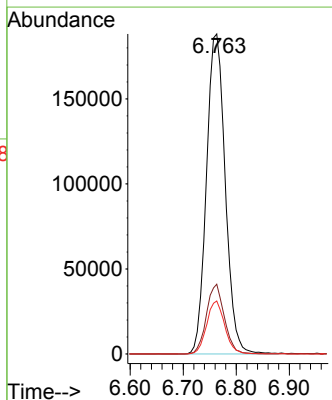
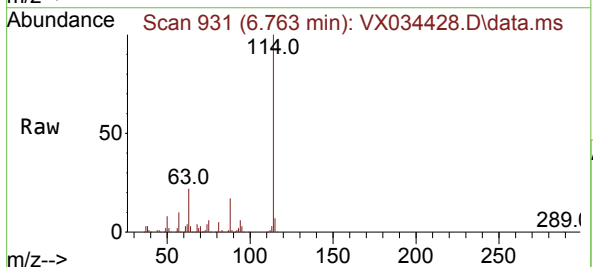
Instrument : MSVOA_X
 ClientSampleId :

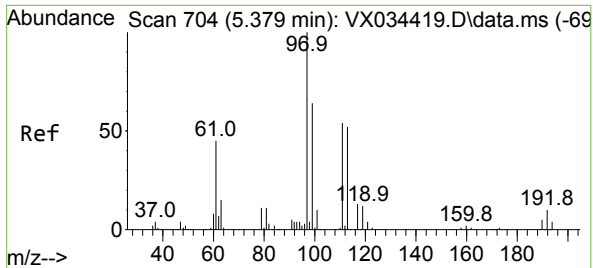
Tgt Ion: 65 Resp: 178638
 Ion Ratio Lower Upper
 65 100
 67 52.4 0.0 104.0



#34
 1,4-Difluorobenzene
 Concen: 50.000 ug/l
 RT: 6.763 min Scan# 931
 Delta R.T. 0.006 min
 Lab File: VX034428.D
 Acq: 13 Mar 2023 13:27

Tgt Ion:114 Resp: 463303
 Ion Ratio Lower Upper
 114 100
 63 21.8 0.0 42.2
 88 16.5 0.0 33.2



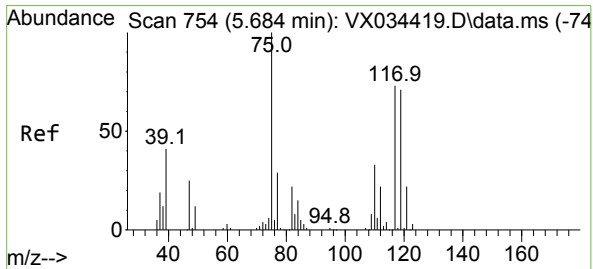
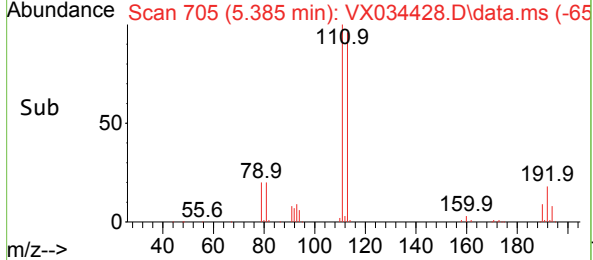
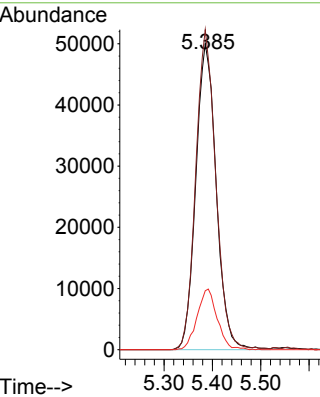
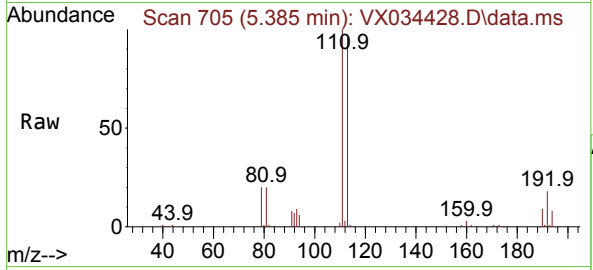


#35
 Dibromofluoromethane
 Concen: 47.970 ug/l
 RT: 5.385 min Scan# 704
 Delta R.T. 0.006 min
 Lab File: VX034428.D
 Acq: 13 Mar 2023 13:27

Instrument : MSVOA_X
 ClientSampleId :

Tgt Ion:113 Resp: 146737

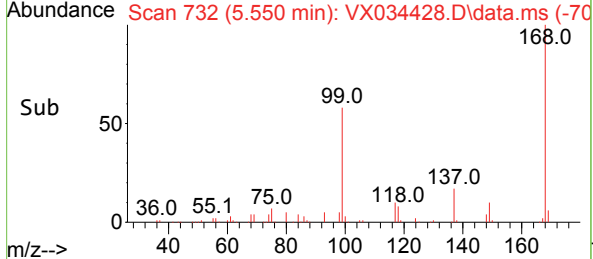
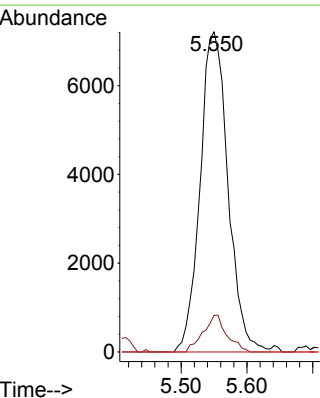
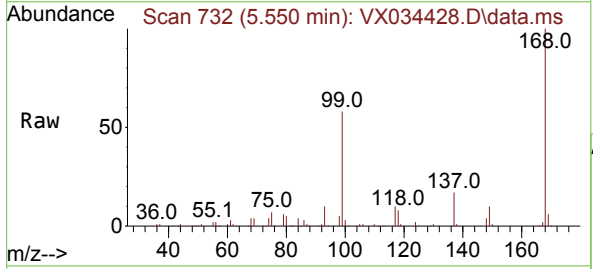
Ion	Ratio	Lower	Upper
113	100		
111	102.7	83.7	125.5
192	19.5	15.4	23.2

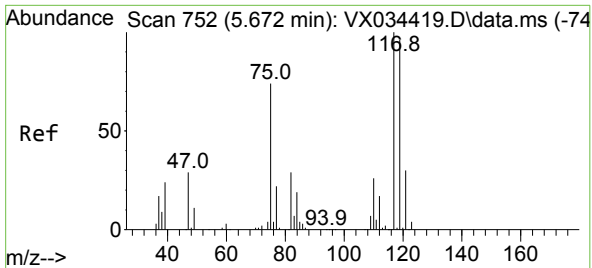


#36
 1,1-Dichloropropene
 Concen: 4.530 ug/l
 RT: 5.550 min Scan# 732
 Delta R.T. -0.134 min
 Lab File: VX034428.D
 Acq: 13 Mar 2023 13:27

Tgt Ion: 75 Resp: 21285

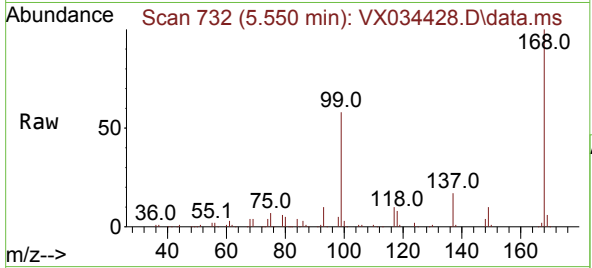
Ion	Ratio	Lower	Upper
75	100		
110	9.8	17.5	52.5#
77	0.0	24.3	36.5#



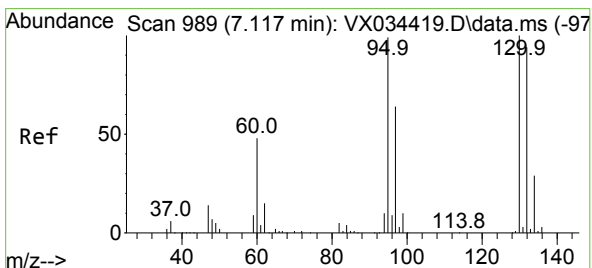
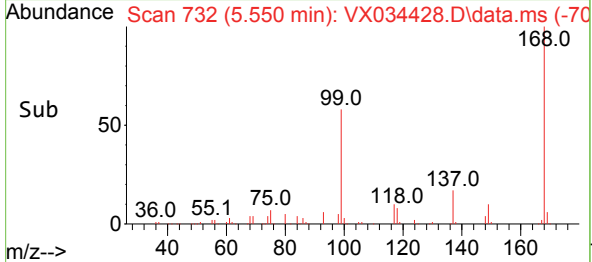
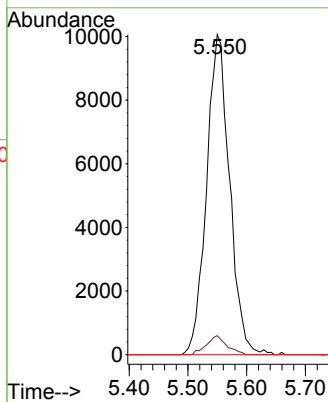


#38
 Carbon Tetrachloride
 Concen: 5.853 ug/l
 RT: 5.550 min Scan# 711
 Delta R.T. -0.122 min
 Lab File: VX034428.D
 Acq: 13 Mar 2023 13:27

Instrument :
 MSVOA_X
 ClientSampleId :

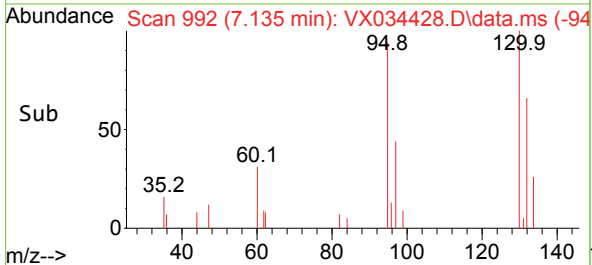
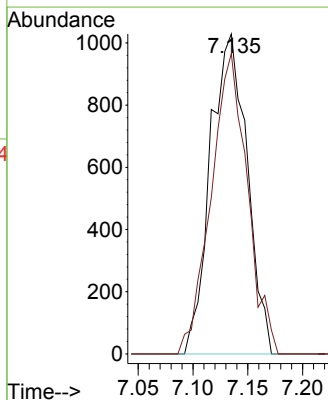
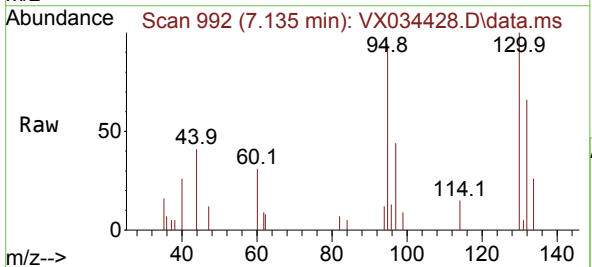


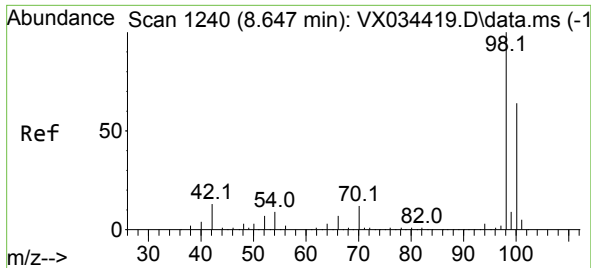
Tgt Ion:117 Resp: 27359
 Ion Ratio Lower Upper
 117 100
 119 5.9 76.6 114.8#
 121 0.0 23.8 35.6#



#44
 Trichloroethene
 Concen: 0.670 ug/l
 RT: 7.135 min Scan# 992
 Delta R.T. 0.018 min
 Lab File: VX034428.D
 Acq: 13 Mar 2023 13:27

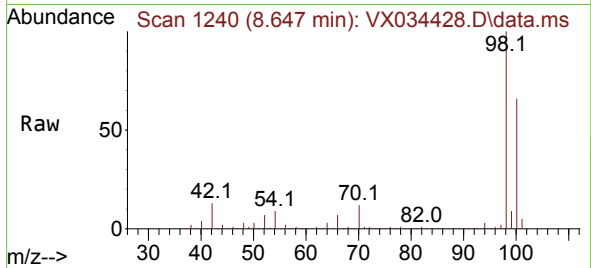
Tgt Ion:130 Resp: 2392
 Ion Ratio Lower Upper
 130 100
 95 93.9 0.0 198.4



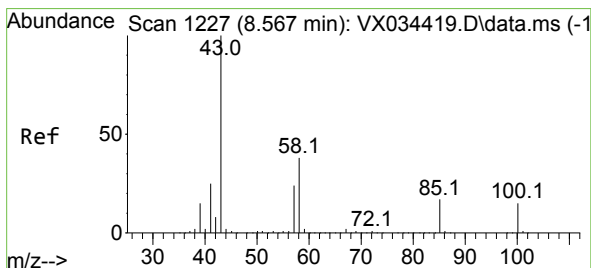
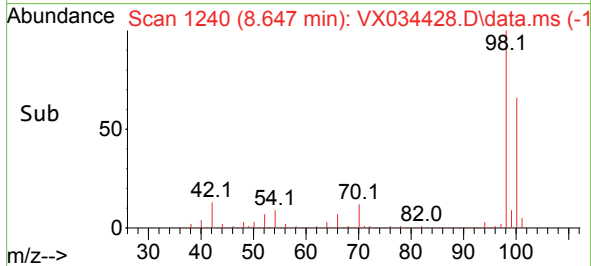
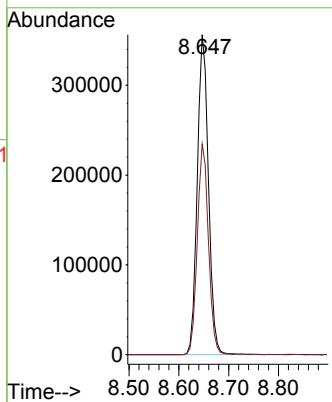


#50
 Toluene-d8
 Concen: 48.505 ug/l
 RT: 8.647 min Scan# 1240
 Delta R.T. 0.000 min
 Lab File: VX034428.D
 Acq: 13 Mar 2023 13:27

Instrument : MSVOA_X
 ClientSampleId :

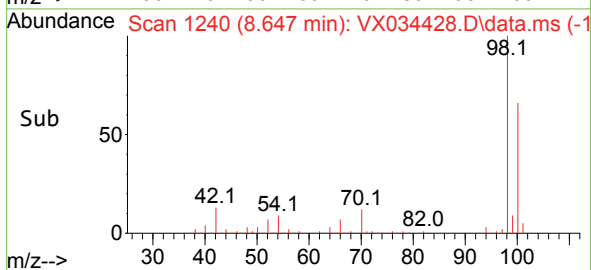
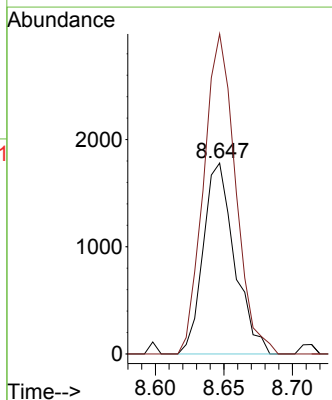
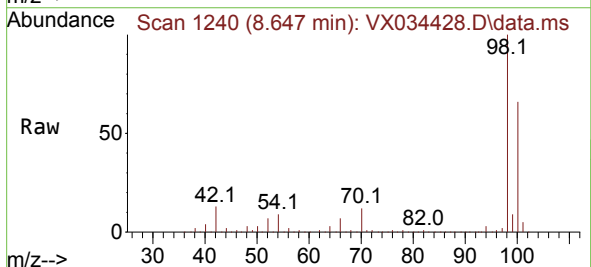


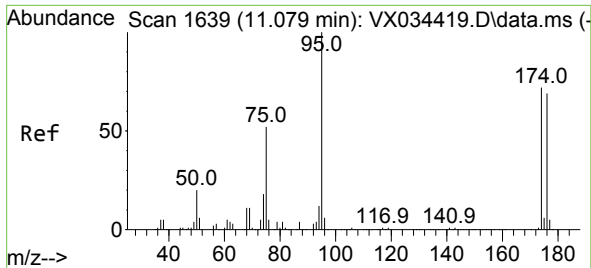
Tgt Ion: 98 Resp: 553888
 Ion Ratio Lower Upper
 98 100
 100 65.5 52.5 78.7



#51
 4-Methyl-2-Pentanone
 Concen: 0.563 ug/l
 RT: 8.647 min Scan# 1240
 Delta R.T. 0.079 min
 Lab File: VX034428.D
 Acq: 13 Mar 2023 13:27

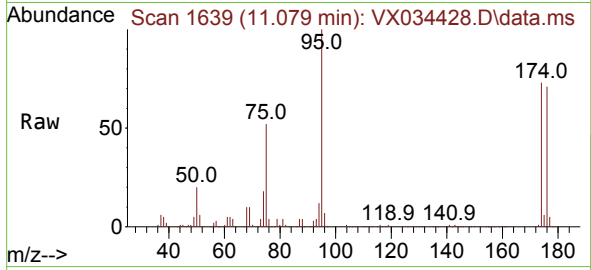
Tgt Ion: 43 Resp: 2841
 Ion Ratio Lower Upper
 43 100
 58 169.8 30.6 46.0#





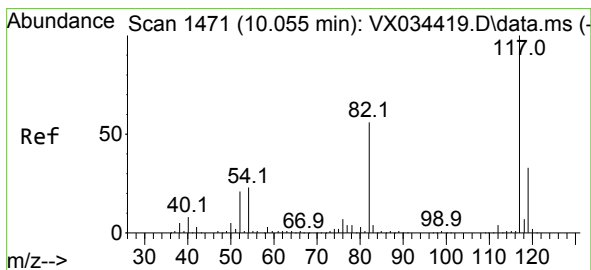
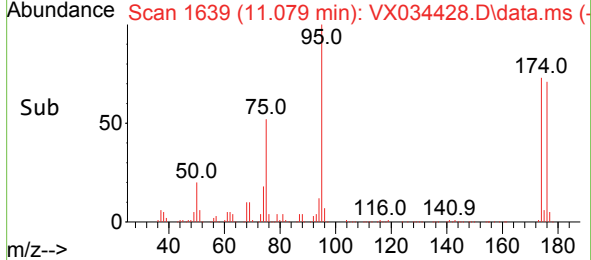
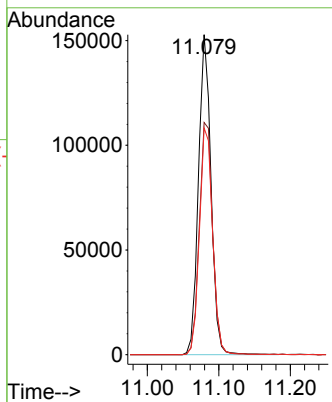
#62
 4-Bromofluorobenzene
 Concen: 40.263 ug/l
 RT: 11.079 min Scan# 1639
 Delta R.T. 0.000 min
 Lab File: VX034428.D
 Acq: 13 Mar 2023 13:27

Instrument : MSVOA_X
 ClientSampleId :

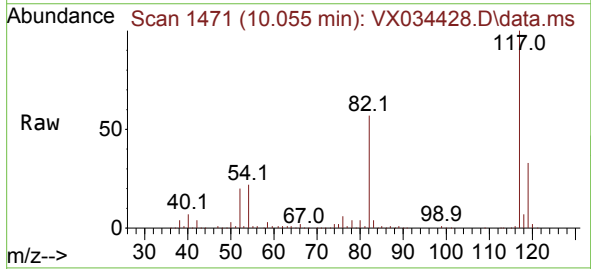


Tgt Ion: 95 Resp: 185715

Ion	Ratio	Lower	Upper
95	100		
174	77.6	0.0	147.4
176	74.6	0.0	140.6

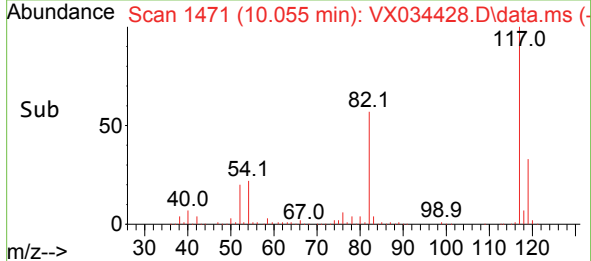
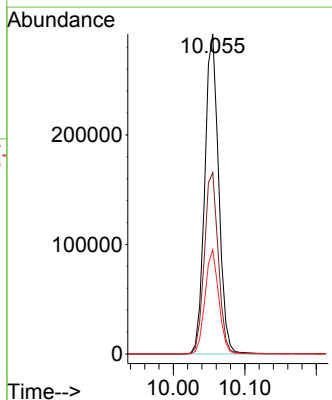


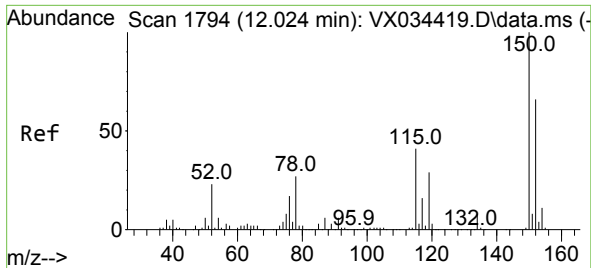
#63
 Chlorobenzene-d5
 Concen: 50.000 ug/l
 RT: 10.055 min Scan# 1471
 Delta R.T. 0.000 min
 Lab File: VX034428.D
 Acq: 13 Mar 2023 13:27



Tgt Ion: 117 Resp: 394810

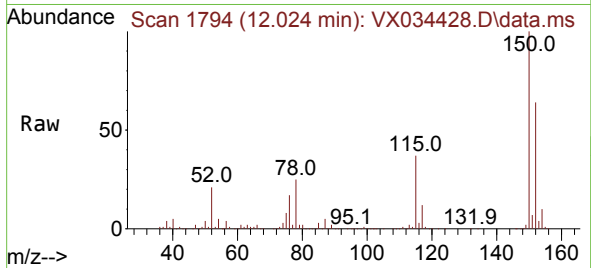
Ion	Ratio	Lower	Upper
117	100		
82	56.6	45.0	67.4
119	32.6	26.0	39.0



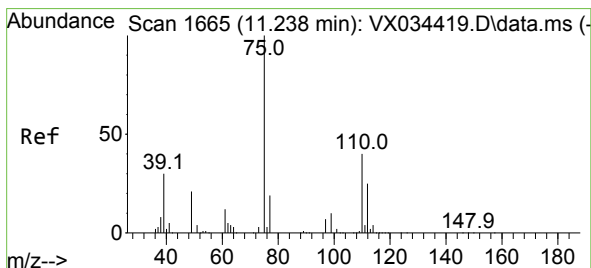
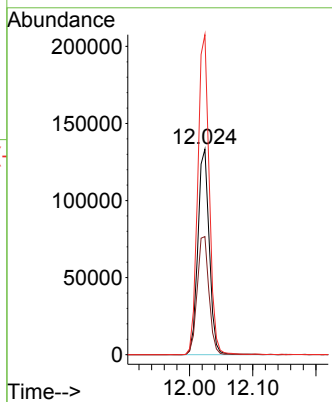
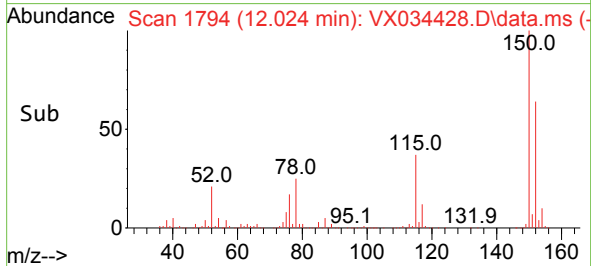


#72
 1,4-Dichlorobenzene-d4
 Concen: 50.000 ug/l
 RT: 12.024 min Scan# 11
 Delta R.T. 0.000 min
 Lab File: VX034428.D
 Acq: 13 Mar 2023 13:27

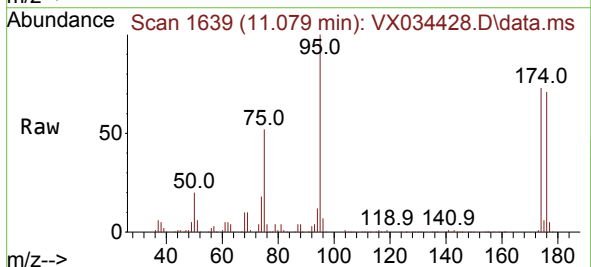
Instrument :
 MSVOA_X
 ClientSampleId :



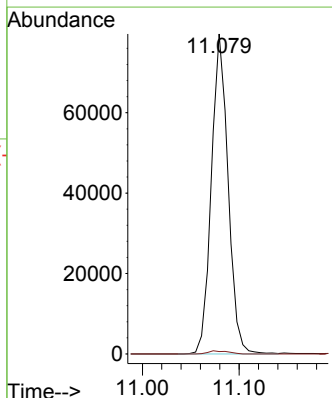
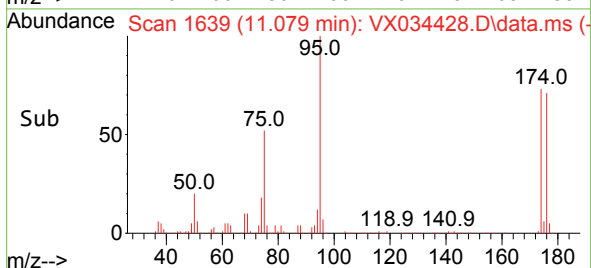
Tgt Ion:152 Resp: 167588
 Ion Ratio Lower Upper
 152 100
 115 59.4 45.0 135.0
 150 156.6 0.0 352.4

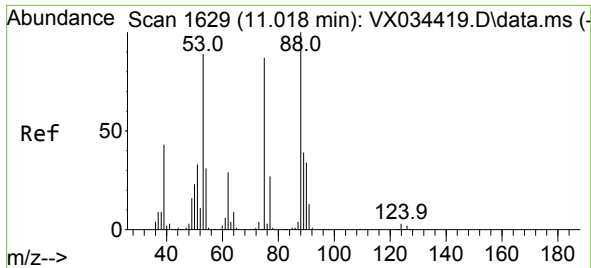


#76
 1,2,3-Trichloropropane
 Concen: 24.848 ug/l
 RT: 11.079 min Scan# 1639
 Delta R.T. -0.158 min
 Lab File: VX034428.D
 Acq: 13 Mar 2023 13:27



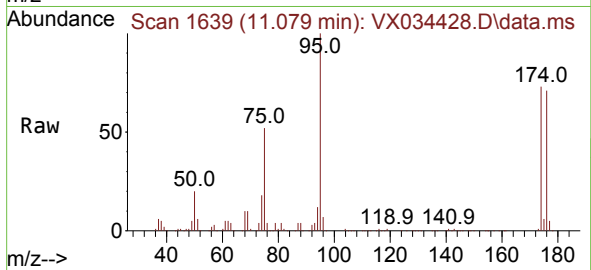
Tgt Ion: 75 Resp: 95615
 Ion Ratio Lower Upper
 75 100
 77 1.2 21.6 64.8#





#81
 trans-1,4-Dichloro-2-butene
 Concen: 67.221 ug/l
 RT: 11.079 min Scan# 1
 Delta R.T. 0.061 min
 Lab File: VX034428.D
 Acq: 13 Mar 2023 13:27

Instrument :
 MSVOA_X
 ClientSampleId :



Tgt Ion: 75 Resp: 95615

Ion	Ratio	Lower	Upper
75	100		
53	0.0	82.6	124.0#
89	0.1	36.9	55.3#

