

Data Path : Z:\voasrv\HPCHEM1\MSVOA_X\Data\VX031325\
 Data File : VX045267.D
 Acq On : 13 Mar 2025 14:23
 Operator : JC/MD
 Sample : Q1559-18
 Misc : 5.0mL/MSVOA_X/WATER
 ALS Vial : 12 Sample Multiplier: 1

Instrument :
 MSVOA_X
ClientSampleId :
 TB

Quant Time: Mar 14 12:28:28 2025
 Quant Method : Z:\voasrv\HPCHEM1\MSVOA_X\Method\82X022825W.M
 Quant Title : SW846 8260
 QLast Update : Fri Feb 28 06:45:16 2025
 Response via : Initial Calibration

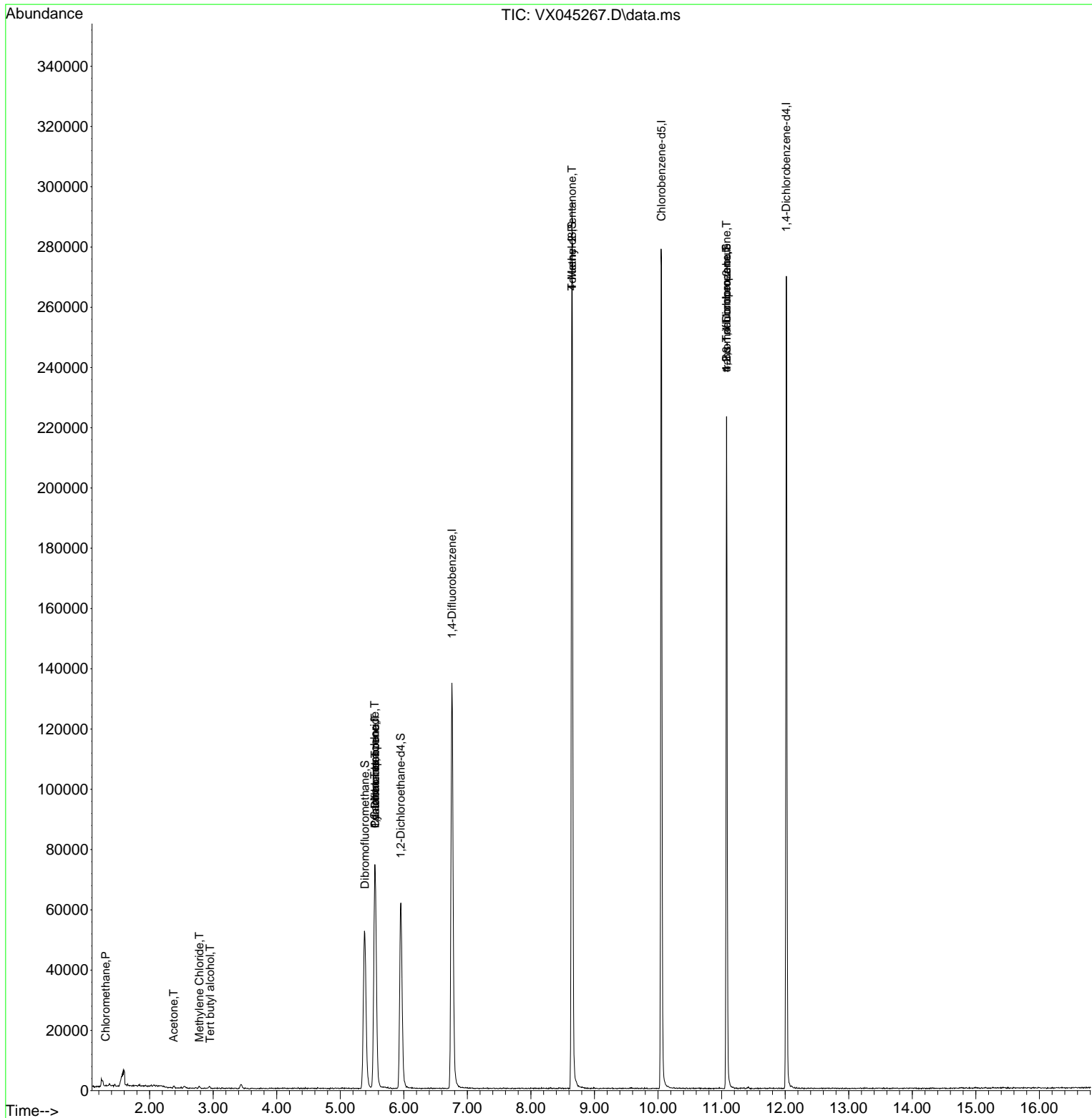
| Compound | R.T. | QIon | Response | Conc | Units | Dev(Min) |
|-------------------------------|--------|----------------|----------|--------|----------|----------|
| ----- | | | | | | |
| Internal Standards | | | | | | |
| 1) Pentafluorobenzene | 5.550 | 168 | 67458 | 50.000 | ug/l | 0.00 |
| 34) 1,4-Difluorobenzene | 6.757 | 114 | 133158 | 50.000 | ug/l | 0.00 |
| 63) Chlorobenzene-d5 | 10.055 | 117 | 121095 | 50.000 | ug/l | 0.00 |
| 72) 1,4-Dichlorobenzene-d4 | 12.018 | 152 | 50304 | 50.000 | ug/l | 0.00 |
| System Monitoring Compounds | | | | | | |
| 33) 1,2-Dichloroethane-d4 | 5.952 | 65 | 58686 | 54.692 | ug/l | 0.00 |
| Spiked Amount | 50.000 | Range 74 - 125 | Recovery | = | 109.380% | |
| 35) Dibromofluoromethane | 5.385 | 113 | 46751 | 52.506 | ug/l | 0.00 |
| Spiked Amount | 50.000 | Range 75 - 124 | Recovery | = | 105.020% | |
| 50) Toluene-d8 | 8.647 | 98 | 167685 | 51.947 | ug/l | 0.00 |
| Spiked Amount | 50.000 | Range 86 - 113 | Recovery | = | 103.900% | |
| 62) 4-Bromofluorobenzene | 11.079 | 95 | 55996 | 52.349 | ug/l | 0.00 |
| Spiked Amount | 50.000 | Range 77 - 121 | Recovery | = | 104.700% | |
| Target Compounds | | | | | | |
| | | | | | | Qvalue |
| 3) Chloromethane | 1.307 | 50 | 242 | 0.233 | ug/l # | 43 |
| 11) Tert butyl alcohol | 2.953 | 59 | 154 | 0.758 | ug/l # | 73 |
| 16) Acetone | 2.380 | 43 | 868 | 1.744 | ug/l # | 87 |
| 20) Methylene Chloride | 2.782 | 84 | 321 | 0.325 | ug/l # | 78 |
| 31) Cyclohexane | 5.550 | 56 | 1760 | 1.206 | ug/l # | 19 |
| 36) 1,1-Dichloropropene | 5.550 | 75 | 6025 | 4.934 | ug/l # | 50 |
| 38) Carbon Tetrachloride | 5.544 | 117 | 7283 | 5.875 | ug/l # | 15 |
| 51) 4-Methyl-2-Pentanone | 8.647 | 43 | 906 | 0.580 | ug/l # | 1 |
| 76) 1,2,3-Trichloropropane | 11.079 | 75 | 30376 | 25.944 | ug/l # | 36 |
| 81) trans-1,4-Dichloro-2-b... | 11.079 | 75 | 30376 | 88.785 | ug/l # | 6 |
| ----- | | | | | | |

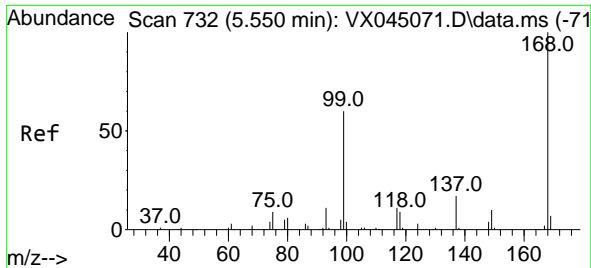
(#) = qualifier out of range (m) = manual integration (+) = signals summed

Data Path : Z:\voasrv\HPCHEM1\MSVOA_X\Data\VX031325\
 Data File : VX045267.D
 Acq On : 13 Mar 2025 14:23
 Operator : JC/MD
 Sample : Q1559-18
 Misc : 5.0mL/MSVOA_X/WATER
 ALS Vial : 12 Sample Multiplier: 1

Instrument :
 MSVOA_X
 ClientSampleId :
 TB

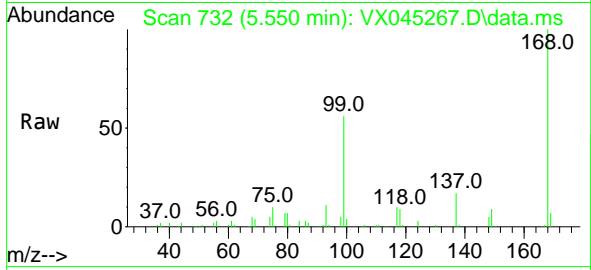
Quant Time: Mar 14 12:28:28 2025
 Quant Method : Z:\voasrv\HPCHEM1\MSVOA_X\Method\82X022825W.M
 Quant Title : SW846 8260
 QLast Update : Fri Feb 28 06:45:16 2025
 Response via : Initial Calibration



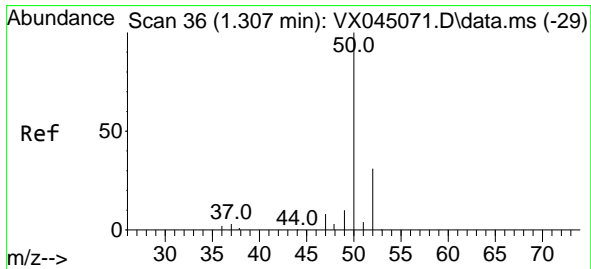
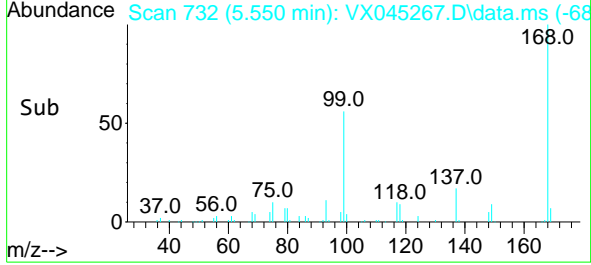
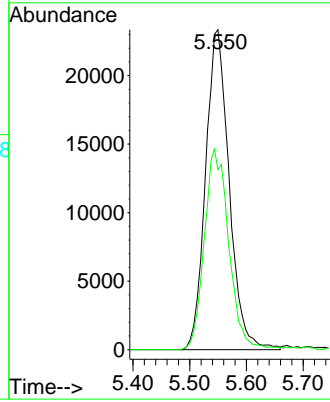


#1
 Pentafluorobenzene
 Concen: 50.000 ug/l
 RT: 5.550 min Scan# 71
 Delta R.T. -0.000 min
 Lab File: VX045267.D
 Acq: 13 Mar 2025 14:23

Instrument : MSVOA_X
 ClientSampleId : TB

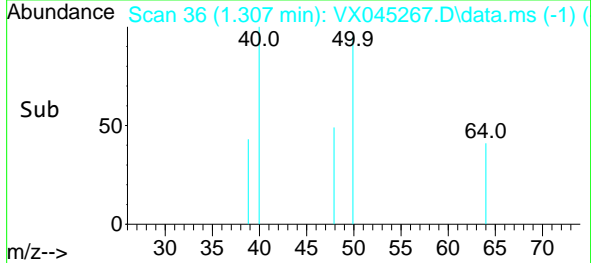
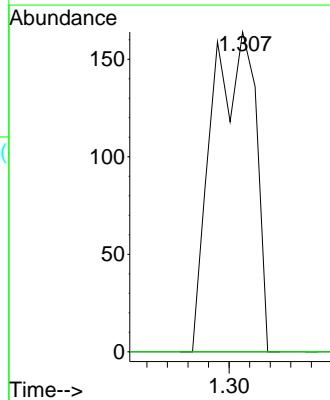
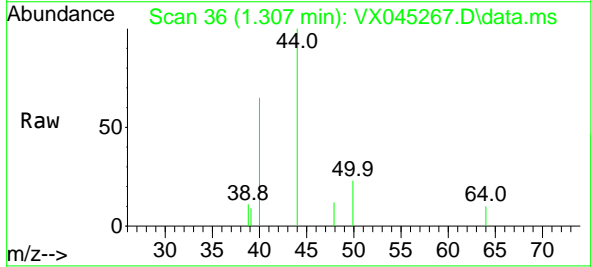


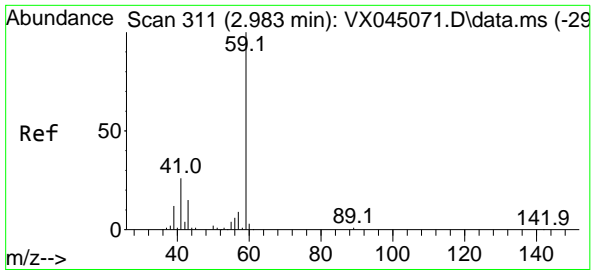
Tgt Ion:168 Resp: 67458
 Ion Ratio Lower Upper
 168 100
 99 56.3 48.2 72.4



#3
 Chloromethane
 Concen: 0.233 ug/l
 RT: 1.307 min Scan# 36
 Delta R.T. -0.000 min
 Lab File: VX045267.D
 Acq: 13 Mar 2025 14:23

Tgt Ion: 50 Resp: 242
 Ion Ratio Lower Upper
 50 100
 52 0.0 25.0 37.4#

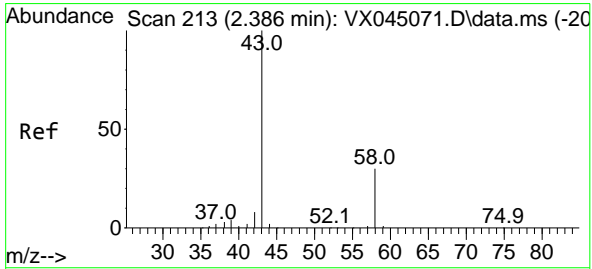
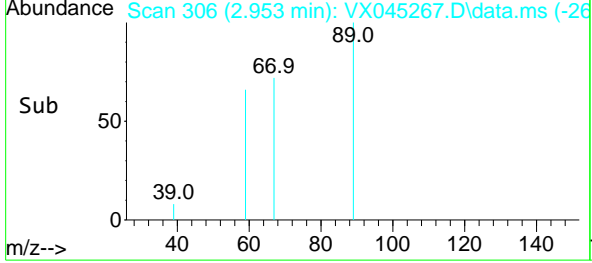
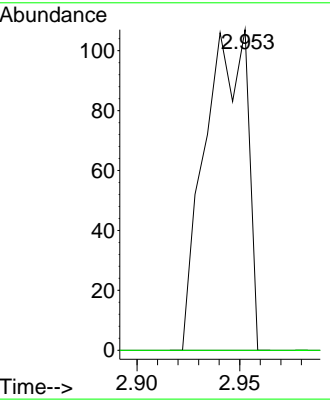
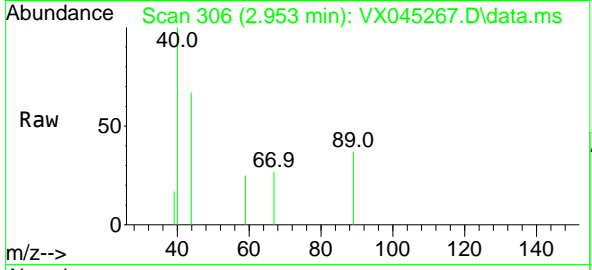




#11
 Tert butyl alcohol
 Concen: 0.758 ug/l
 RT: 2.953 min Scan# 306
 Delta R.T. -0.031 min
 Lab File: VX045267.D
 Acq: 13 Mar 2025 14:23

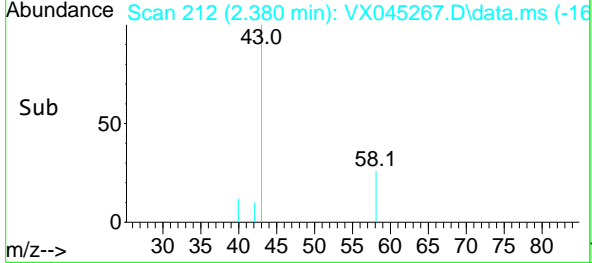
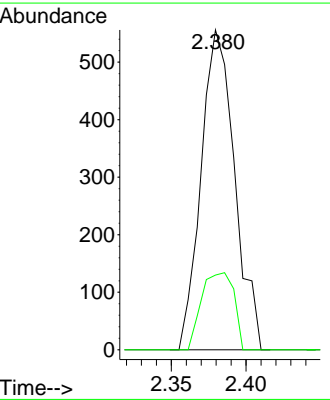
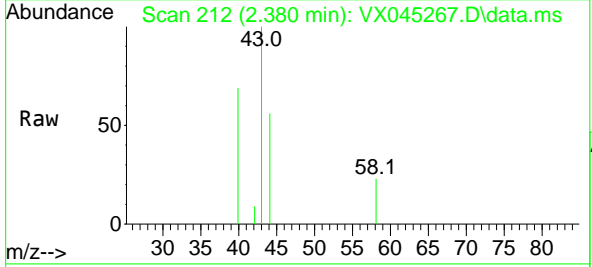
Instrument : MSVOA_X
 ClientSampleId : TB

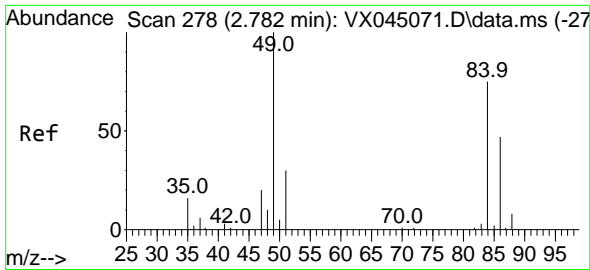
Tgt Ion: 59 Resp: 154
 Ion Ratio Lower Upper
 59 100
 57 0.0 7.8 11.8#



#16
 Acetone
 Concen: 1.744 ug/l
 RT: 2.380 min Scan# 212
 Delta R.T. -0.006 min
 Lab File: VX045267.D
 Acq: 13 Mar 2025 14:23

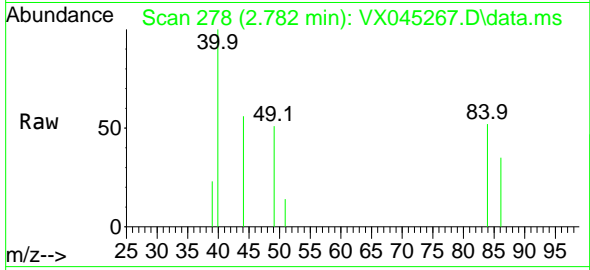
Tgt Ion: 43 Resp: 868
 Ion Ratio Lower Upper
 43 100
 58 23.4 24.2 36.4#





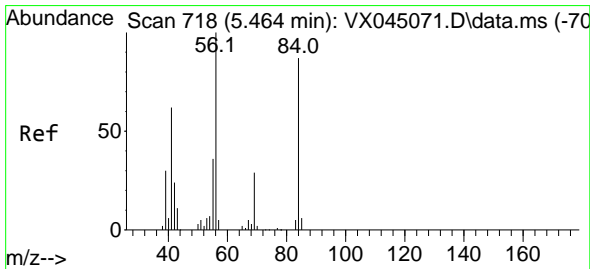
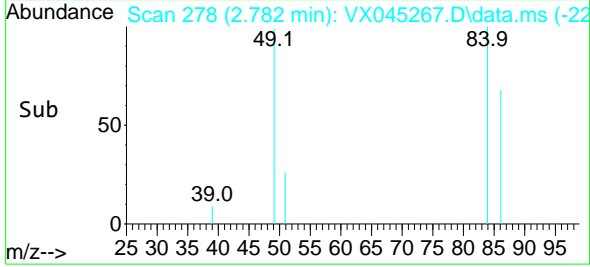
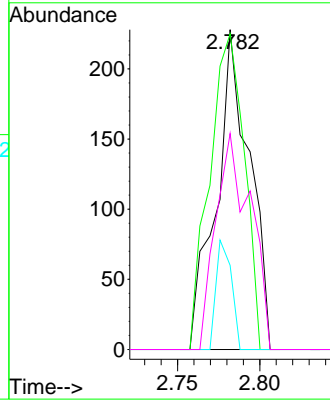
#20
 Methylene Chloride
 Concen: 0.325 ug/l
 RT: 2.782 min Scan# 21
 Delta R.T. -0.000 min
 Lab File: VX045267.D
 Acq: 13 Mar 2025 14:23

Instrument :
 MSVOA_X
 ClientSampleId :
 TB



Tgt Ion: 84 Resp: 321

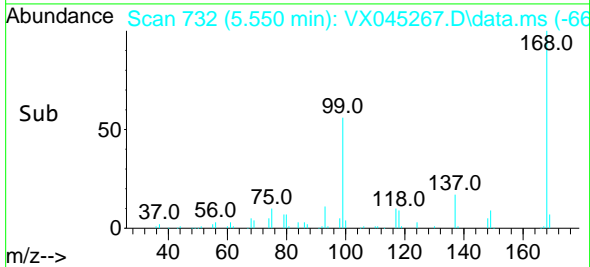
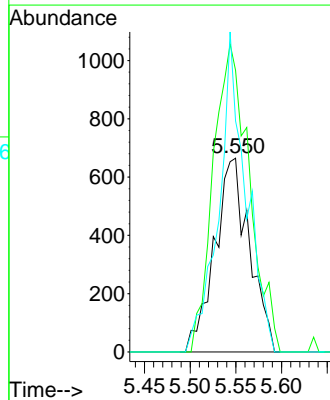
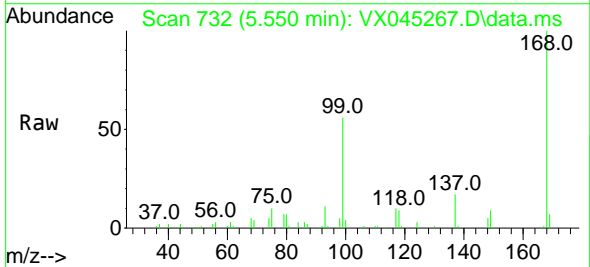
| Ion | Ratio | Lower | Upper |
|-----|-------|-------|--------|
| 84 | 100 | | |
| 49 | 98.7 | 106.5 | 159.7# |
| 51 | 26.3 | 32.1 | 48.1# |
| 86 | 67.5 | 50.0 | 75.0 |

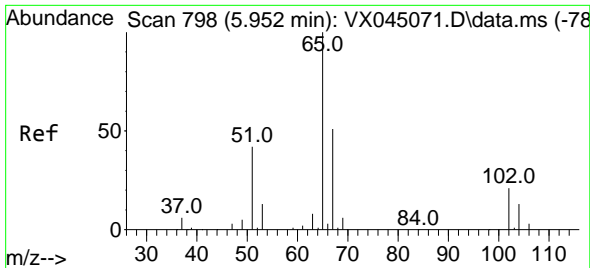


#31
 Cyclohexane
 Concen: 1.206 ug/l
 RT: 5.550 min Scan# 732
 Delta R.T. 0.085 min
 Lab File: VX045267.D
 Acq: 13 Mar 2025 14:23

Tgt Ion: 56 Resp: 1760

| Ion | Ratio | Lower | Upper |
|-----|-------|-------|--------|
| 56 | 100 | | |
| 69 | 145.3 | 23.4 | 35.2# |
| 84 | 119.2 | 69.4 | 104.2# |

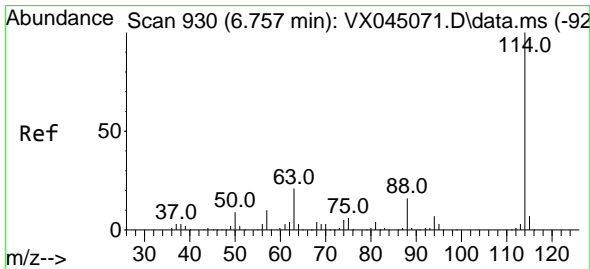
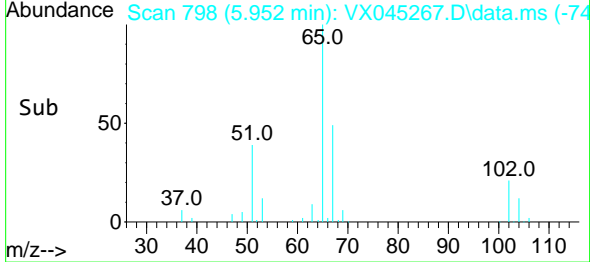
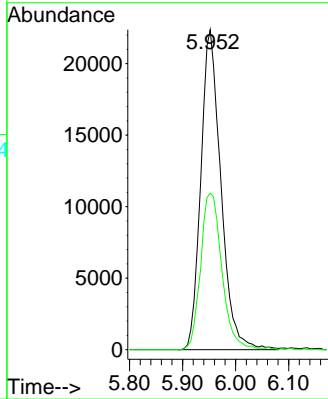
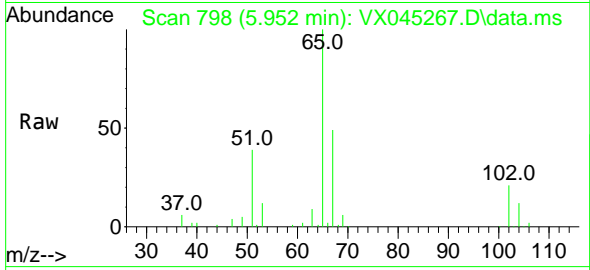




#33
 1,2-Dichloroethane-d4
 Concen: 54.692 ug/l
 RT: 5.952 min Scan# 798
 Delta R.T. -0.000 min
 Lab File: VX045267.D
 Acq: 13 Mar 2025 14:23

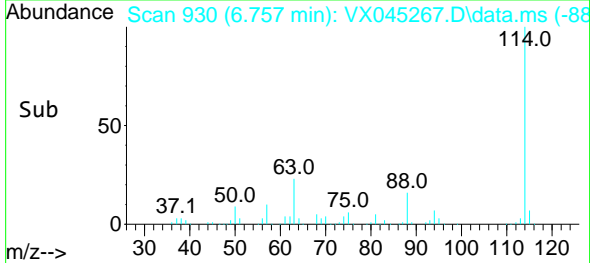
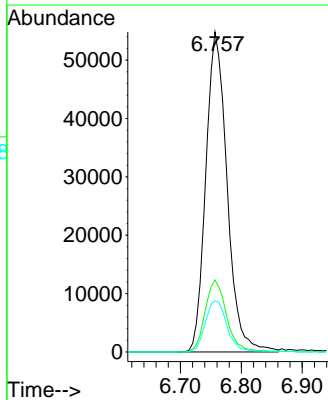
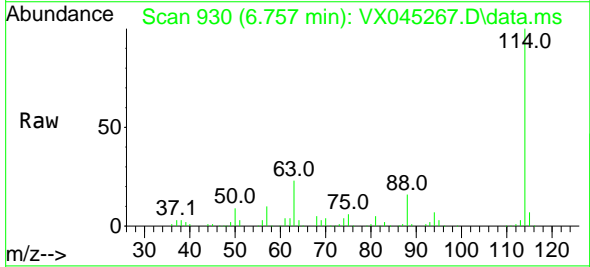
Instrument : MSVOA_X
 ClientSampleId : TB

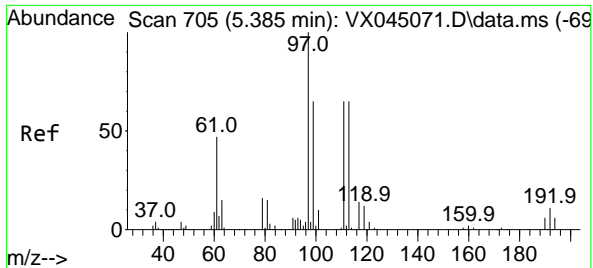
Tgt Ion: 65 Resp: 58686
 Ion Ratio Lower Upper
 65 100
 67 51.7 0.0 106.2



#34
 1,4-Difluorobenzene
 Concen: 50.000 ug/l
 RT: 6.757 min Scan# 930
 Delta R.T. -0.000 min
 Lab File: VX045267.D
 Acq: 13 Mar 2025 14:23

Tgt Ion: 114 Resp: 133158
 Ion Ratio Lower Upper
 114 100
 63 22.5 0.0 41.8
 88 15.9 0.0 32.8

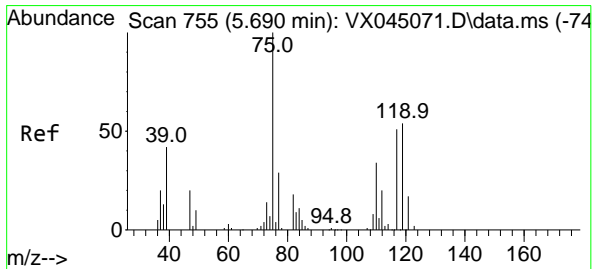
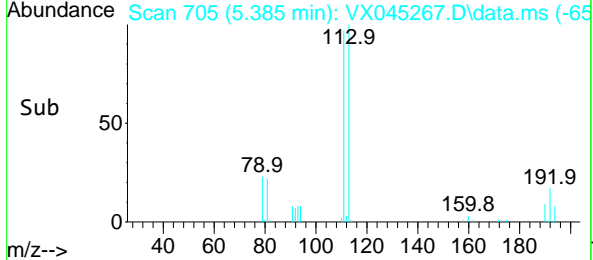
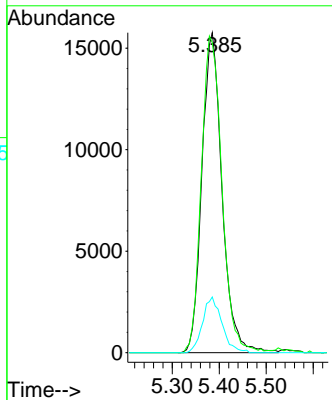
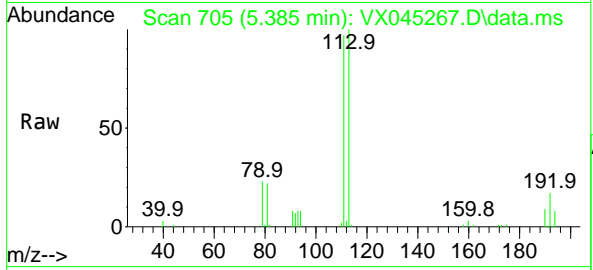




#35
 Dibromofluoromethane
 Concen: 52.506 ug/l
 RT: 5.385 min Scan# 705
 Delta R.T. -0.000 min
 Lab File: VX045267.D
 Acq: 13 Mar 2025 14:23

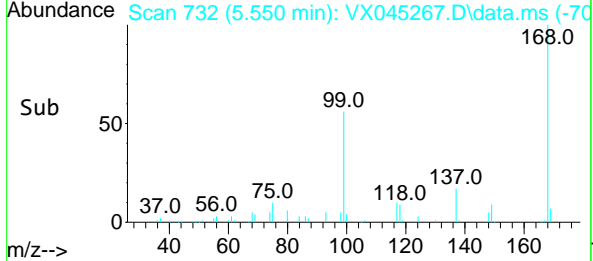
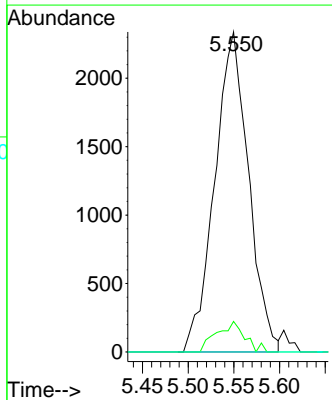
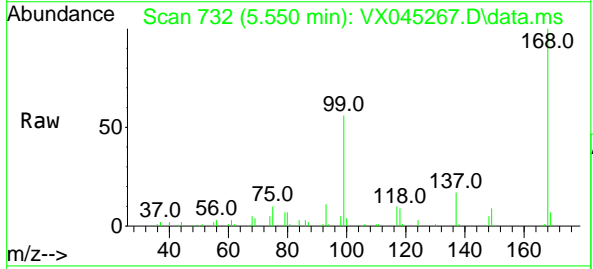
Instrument : MSVOA_X
 ClientSampleId : TB

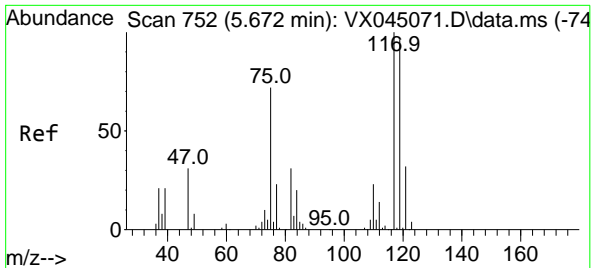
| Tgt Ion | Resp | Lower | Upper |
|---------|-------|-------|-------|
| 113 | 100 | | |
| 111 | 101.5 | 81.8 | 122.6 |
| 192 | 16.8 | 14.3 | 21.5 |



#36
 1,1-Dichloropropene
 Concen: 4.934 ug/l
 RT: 5.550 min Scan# 732
 Delta R.T. -0.140 min
 Lab File: VX045267.D
 Acq: 13 Mar 2025 14:23

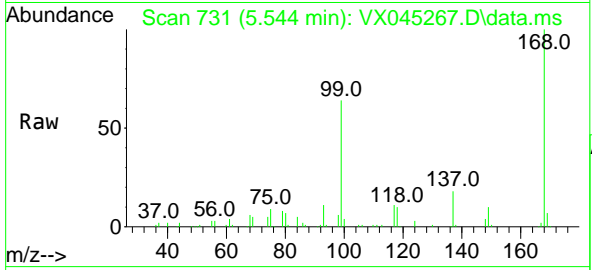
| Tgt Ion | Resp | Lower | Upper |
|---------|------|-------|-------|
| 75 | 100 | | |
| 110 | 7.9 | 16.9 | 50.6# |
| 77 | 0.0 | 24.5 | 36.7# |



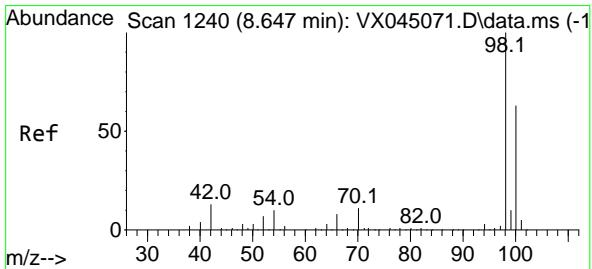
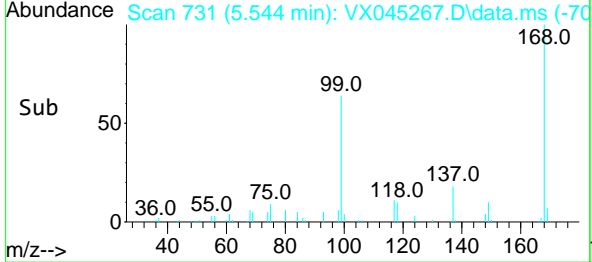
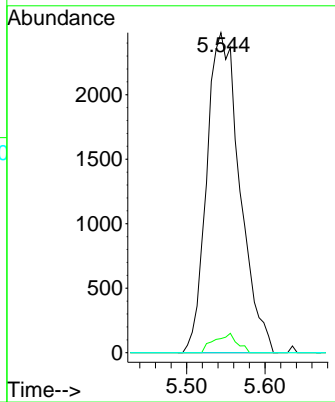


#38
 Carbon Tetrachloride
 Concen: 5.875 ug/l
 RT: 5.544 min Scan# 71
 Delta R.T. -0.128 min
 Lab File: VX045267.D
 Acq: 13 Mar 2025 14:23

Instrument : MSVOA_X
 ClientSampleId : TB

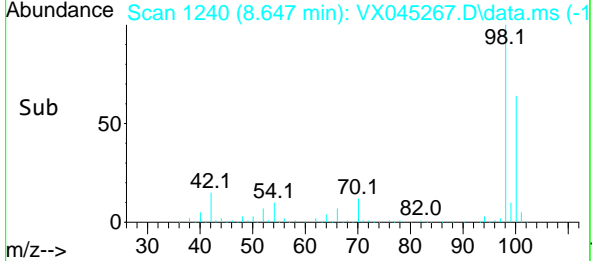
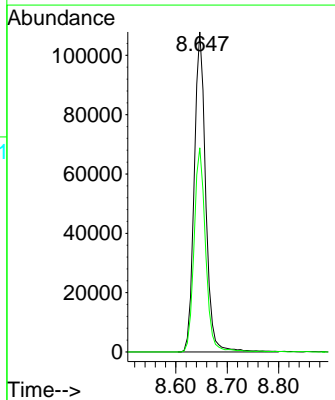
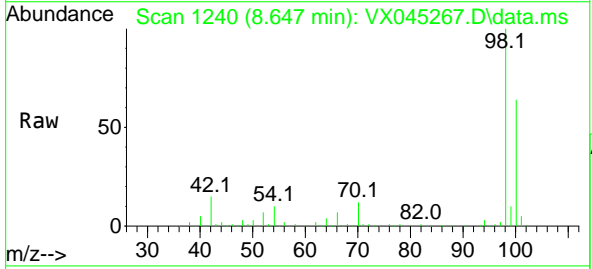


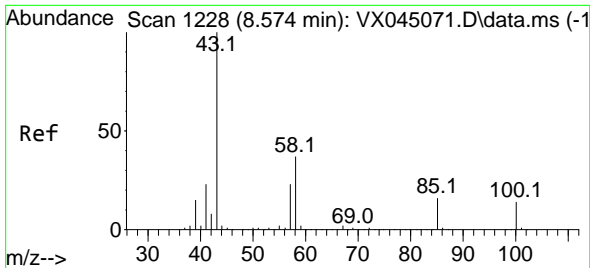
Tgt Ion: 117 Resp: 7283
 Ion Ratio Lower Upper
 117 100
 119 4.4 76.7 115.1#
 121 0.0 25.5 38.3#



#50
 Toluene-d8
 Concen: 51.947 ug/l
 RT: 8.647 min Scan# 1240
 Delta R.T. -0.000 min
 Lab File: VX045267.D
 Acq: 13 Mar 2025 14:23

Tgt Ion: 98 Resp: 167685
 Ion Ratio Lower Upper
 98 100
 100 64.0 52.0 78.0

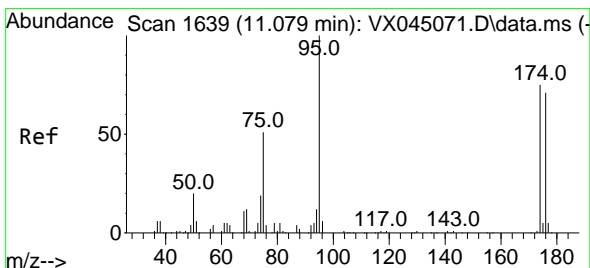
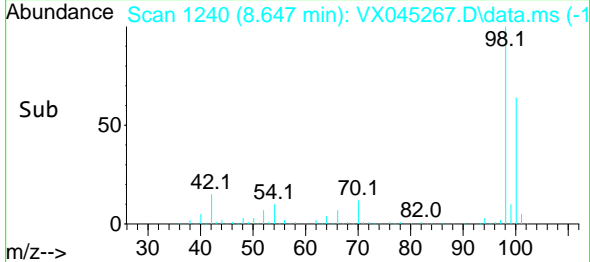
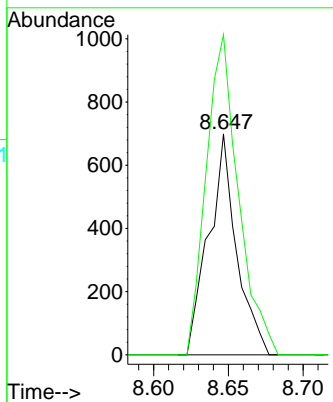
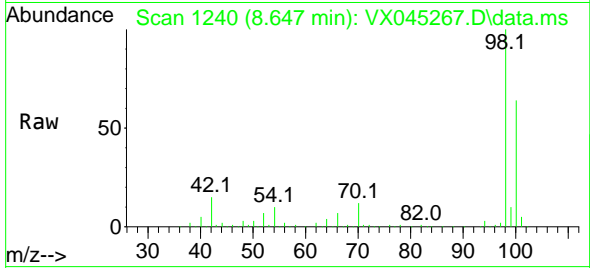




#51
 4-Methyl-2-Pentanone
 Concen: 0.580 ug/l
 RT: 8.647 min Scan# 11
 Delta R.T. 0.073 min
 Lab File: VX045267.D
 Acq: 13 Mar 2025 14:23

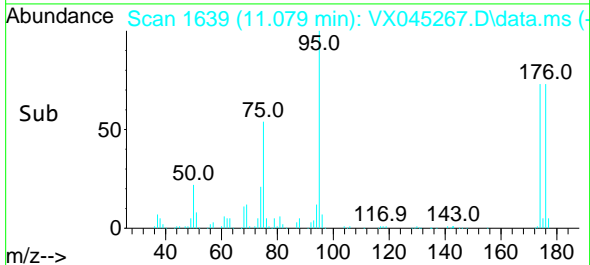
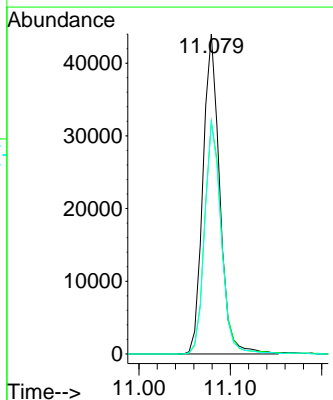
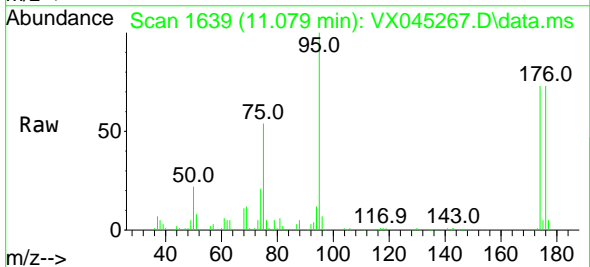
Instrument :
 MSVOA_X
 ClientSampleId :
 TB

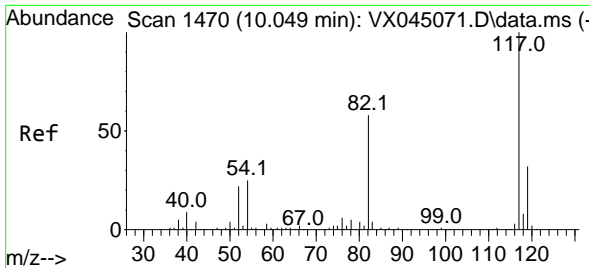
Tgt Ion: 43 Resp: 906
 Ion Ratio Lower Upper
 43 100
 58 167.2 29.2 43.8#



#62
 4-Bromofluorobenzene
 Concen: 52.349 ug/l
 RT: 11.079 min Scan# 1639
 Delta R.T. -0.000 min
 Lab File: VX045267.D
 Acq: 13 Mar 2025 14:23

Tgt Ion: 95 Resp: 55996
 Ion Ratio Lower Upper
 95 100
 174 73.4 0.0 148.2
 176 71.4 0.0 141.4



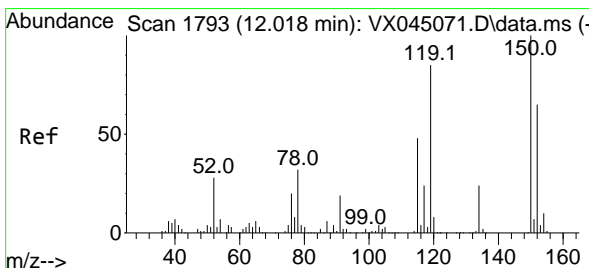
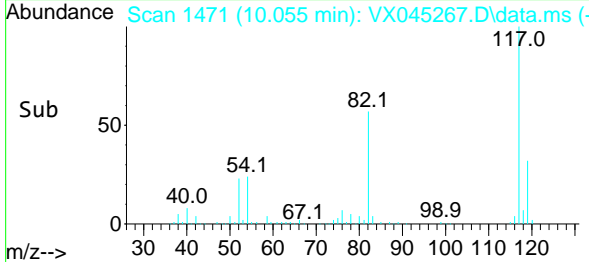
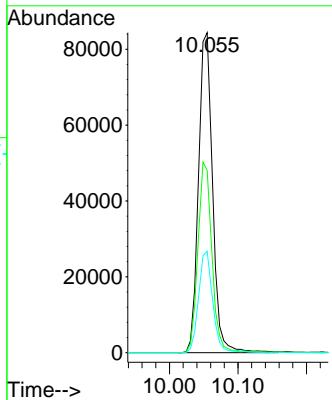
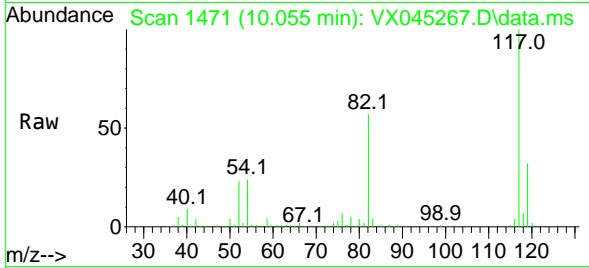


#63
 Chlorobenzene-d5
 Concen: 50.000 ug/l
 RT: 10.055 min Scan# 1470
 Delta R.T. 0.006 min
 Lab File: VX045267.D
 Acq: 13 Mar 2025 14:23

Instrument : MSVOA_X
 ClientSampleId : TB

Tgt Ion:117 Resp: 121095

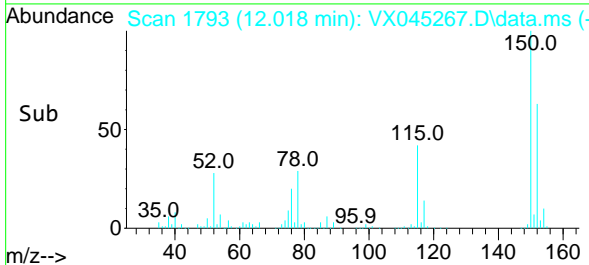
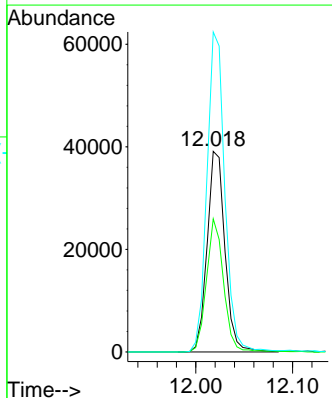
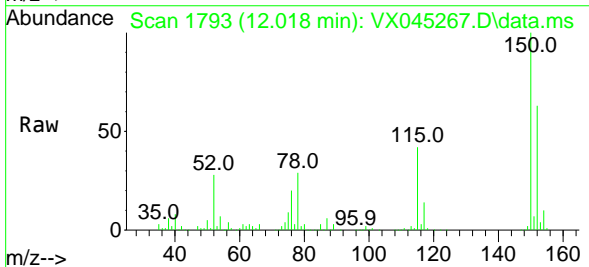
| Ion | Ratio | Lower | Upper |
|-----|-------|-------|-------|
| 117 | 100 | | |
| 82 | 57.0 | 46.3 | 69.5 |
| 119 | 31.7 | 25.7 | 38.5 |

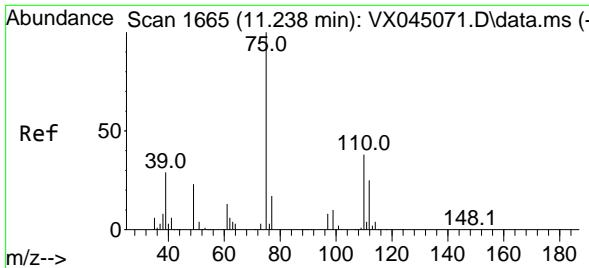


#72
 1,4-Dichlorobenzene-d4
 Concen: 50.000 ug/l
 RT: 12.018 min Scan# 1793
 Delta R.T. -0.000 min
 Lab File: VX045267.D
 Acq: 13 Mar 2025 14:23

Tgt Ion:152 Resp: 50304

| Ion | Ratio | Lower | Upper |
|-----|-------|-------|-------|
| 152 | 100 | | |
| 115 | 63.7 | 44.2 | 132.6 |
| 150 | 159.4 | 0.0 | 349.0 |

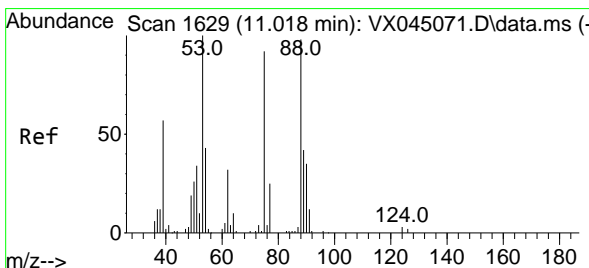
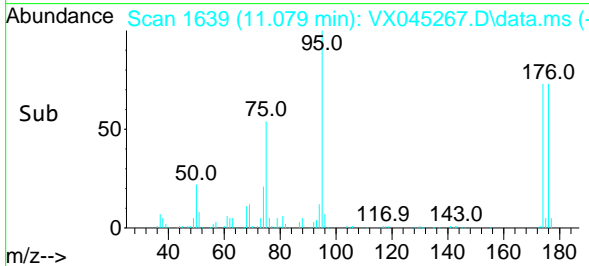
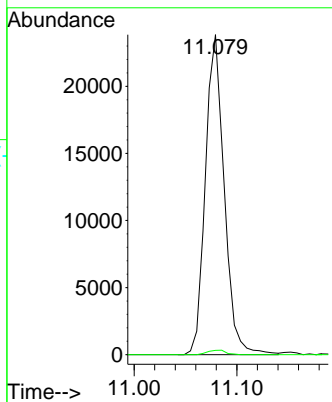
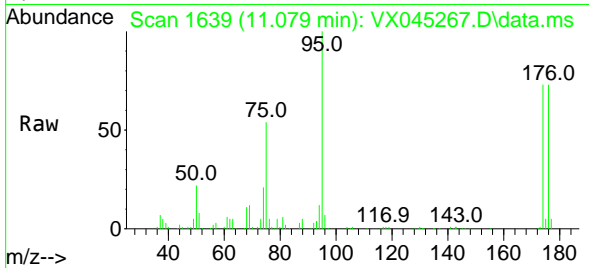




#76
 1,2,3-Trichloropropane
 Concen: 25.944 ug/l
 RT: 11.079 min Scan# 1639
 Delta R.T. -0.159 min
 Lab File: VX045267.D
 Acq: 13 Mar 2025 14:23

Instrument : MSVOA_X
 ClientSampleId : TB

Tgt Ion: 75 Resp: 30376
 Ion Ratio Lower Upper
 75 100
 77 1.4 20.7 62.1#



#81
 trans-1,4-Dichloro-2-butene
 Concen: 88.785 ug/l
 RT: 11.079 min Scan# 1639
 Delta R.T. 0.061 min
 Lab File: VX045267.D
 Acq: 13 Mar 2025 14:23

Tgt Ion: 75 Resp: 30376
 Ion Ratio Lower Upper
 75 100
 53 0.0 88.5 132.7#
 89 0.0 36.2 54.4#

