

Data Path : Z:\voasrv\HPCHEM1\MSVOA_X\Data\VX031325\
 Data File : VX045269.D
 Acq On : 13 Mar 2025 15:10
 Operator : JC/MD
 Sample : Q1559-03
 Misc : 5.0mL/MSVOA_X/WATER
 ALS Vial : 14 Sample Multiplier: 1

Instrument :
 MSVOA_X
 ClientSampleId :

Quant Time: Mar 14 12:28:48 2025
 Quant Method : Z:\voasrv\HPCHEM1\MSVOA_X\Method\82X022825W.M
 Quant Title : SW846 8260
 QLast Update : Fri Feb 28 06:45:16 2025
 Response via : Initial Calibration

Compound	R.T.	QIon	Response	Conc	Units	Dev(Min)

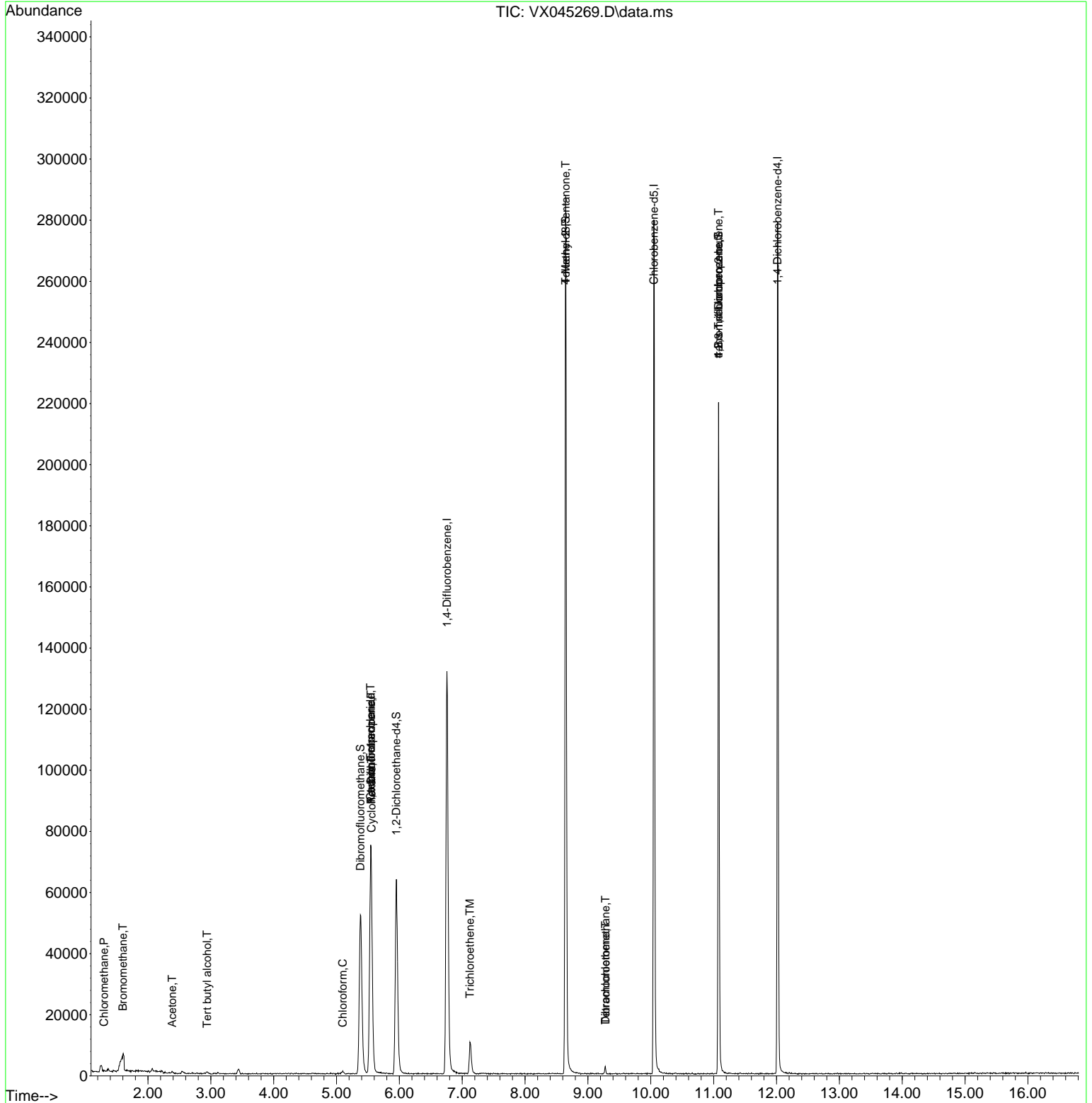
Internal Standards						
1) Pentafluorobenzene	5.550	168	66880	50.000	ug/l	0.00
34) 1,4-Difluorobenzene	6.757	114	131935	50.000	ug/l	0.00
63) Chlorobenzene-d5	10.049	117	120933	50.000	ug/l	0.00
72) 1,4-Dichlorobenzene-d4	12.018	152	51713	50.000	ug/l	0.00
System Monitoring Compounds						
33) 1,2-Dichloroethane-d4	5.952	65	57782	54.315	ug/l	0.00
Spiked Amount	50.000	Range 74 - 125	Recovery	=	108.640%	
35) Dibromofluoromethane	5.379	113	45842	51.962	ug/l	0.00
Spiked Amount	50.000	Range 75 - 124	Recovery	=	103.920%	
50) Toluene-d8	8.647	98	162181	50.708	ug/l	0.00
Spiked Amount	50.000	Range 86 - 113	Recovery	=	101.420%	
62) 4-Bromofluorobenzene	11.079	95	55641	52.500	ug/l	0.00
Spiked Amount	50.000	Range 77 - 121	Recovery	=	105.000%	
Target Compounds						
						Qvalue
3) Chloromethane	1.300	50	239	0.232	ug/l	97
5) Bromomethane	1.599	94	95	0.236	ug/l #	3
11) Tert butyl alcohol	2.940	59	206	1.022	ug/l #	73
16) Acetone	2.386	43	758	1.536	ug/l #	77
30) Chloroform	5.099	83	849	0.512	ug/l #	74
31) Cyclohexane	5.556	56	1871	1.293	ug/l #	66
36) 1,1-Dichloropropene	5.550	75	6076	5.022	ug/l #	51
38) Carbon Tetrachloride	5.544	117	7640	6.220	ug/l #	16
44) Trichloroethene	7.123	130	4200	4.682	ug/l	92
51) 4-Methyl-2-Pentanone	8.647	43	807	0.521	ug/l #	1
60) Dibromochloromethane	9.281	129	326	0.338	ug/l #	11
64) Tetrachloroethene	9.281	164	310	0.400	ug/l	94
76) 1,2,3-Trichloropropane	11.079	75	30680	25.490	ug/l #	36
81) trans-1,4-Dichloro-2-b...	11.079	75	30680	87.230	ug/l #	6

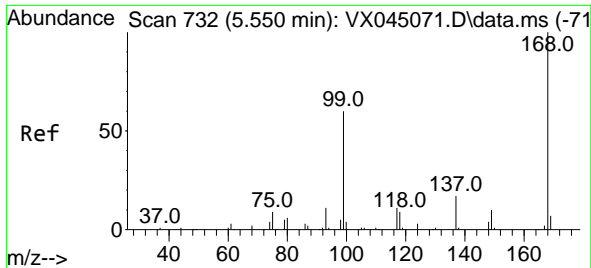
(#) = qualifier out of range (m) = manual integration (+) = signals summed

Data Path : Z:\voasrv\HPCHEM1\MSVOA_X\Data\VX031325\
 Data File : VX045269.D
 Acq On : 13 Mar 2025 15:10
 Operator : JC/MD
 Sample : Q1559-03
 Misc : 5.0mL/MSVOA_X/WATER
 ALS Vial : 14 Sample Multiplier: 1

Instrument :
 MSVOA_X
 ClientSampleId :

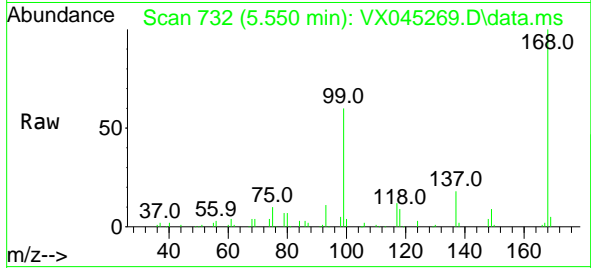
Quant Time: Mar 14 12:28:48 2025
 Quant Method : Z:\voasrv\HPCHEM1\MSVOA_X\Method\82X022825W.M
 Quant Title : SW846 8260
 QLast Update : Fri Feb 28 06:45:16 2025
 Response via : Initial Calibration



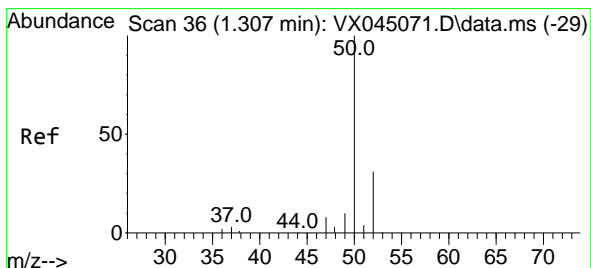
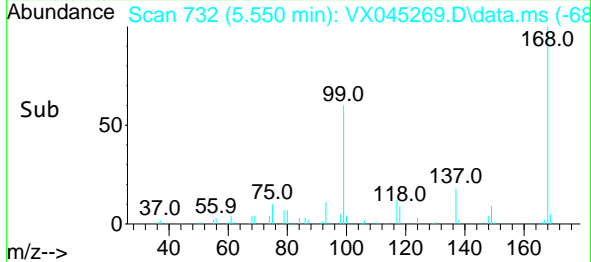
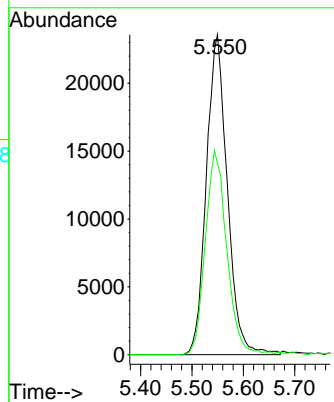


#1
 Pentafluorobenzene
 Concen: 50.000 ug/l
 RT: 5.550 min Scan# 71
 Delta R.T. -0.000 min
 Lab File: VX045269.D
 Acq: 13 Mar 2025 15:10

Instrument :
 MSVOA_X
 ClientSampleId :

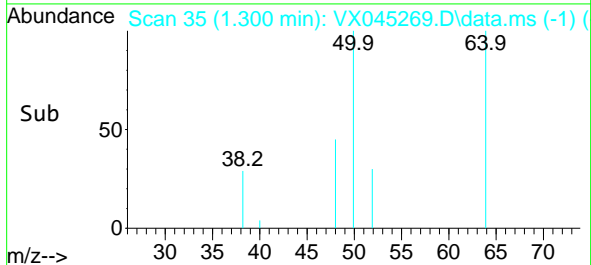
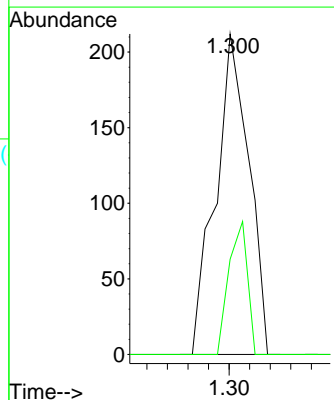
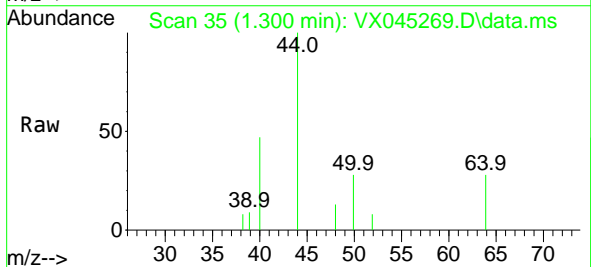


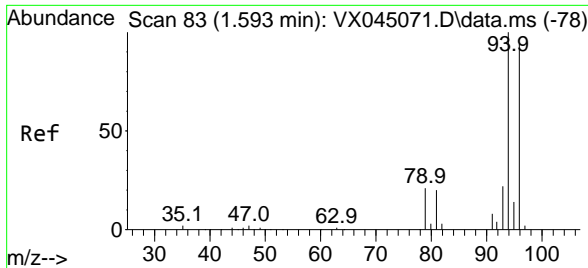
Tgt Ion:168 Resp: 66880
 Ion Ratio Lower Upper
 168 100
 99 59.8 48.2 72.4



#3
 Chloromethane
 Concen: 0.232 ug/l
 RT: 1.300 min Scan# 35
 Delta R.T. -0.006 min
 Lab File: VX045269.D
 Acq: 13 Mar 2025 15:10

Tgt Ion: 50 Resp: 239
 Ion Ratio Lower Upper
 50 100
 52 29.7 25.0 37.4

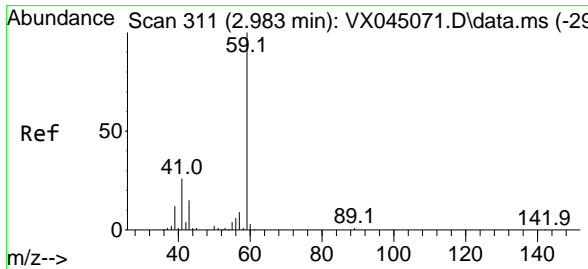
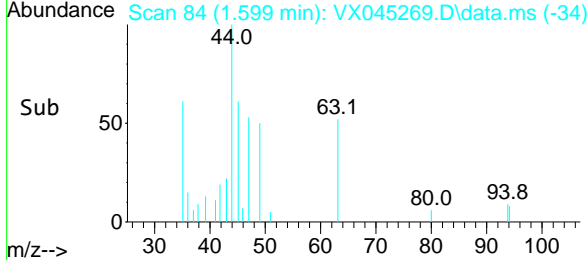
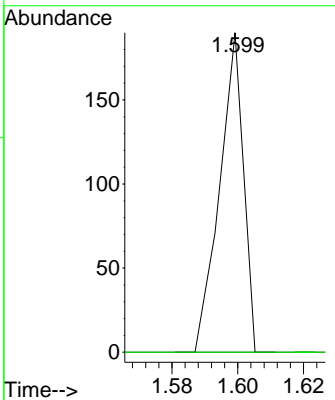
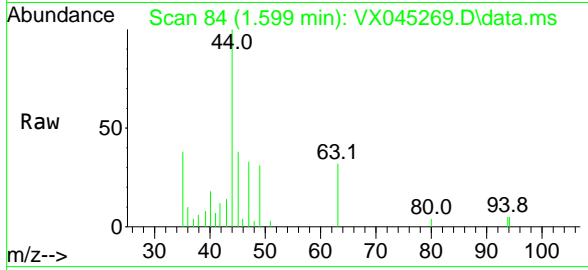




#5
 Bromomethane
 Concen: 0.236 ug/l
 RT: 1.599 min Scan# 84
 Delta R.T. 0.006 min
 Lab File: VX045269.D
 Acq: 13 Mar 2025 15:10

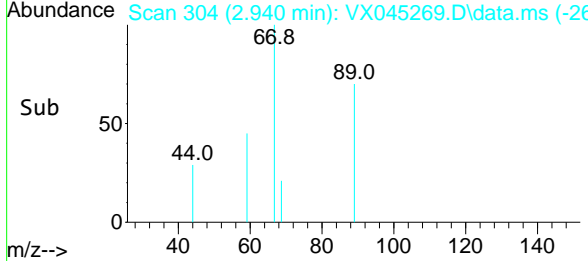
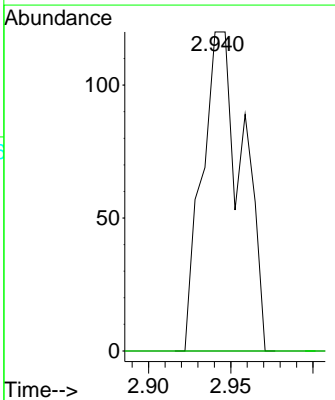
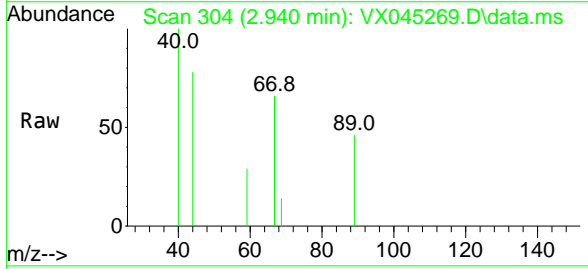
Instrument : MSVOA_X
 ClientSampleId :

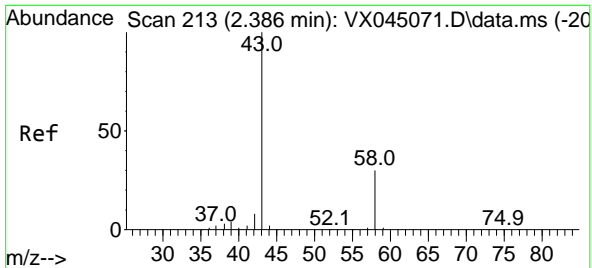
Tgt Ion: 94 Resp: 95
 Ion Ratio Lower Upper
 94 100
 96 0.0 75.0 112.4#



#11
 Tert butyl alcohol
 Concen: 1.022 ug/l
 RT: 2.940 min Scan# 304
 Delta R.T. -0.043 min
 Lab File: VX045269.D
 Acq: 13 Mar 2025 15:10

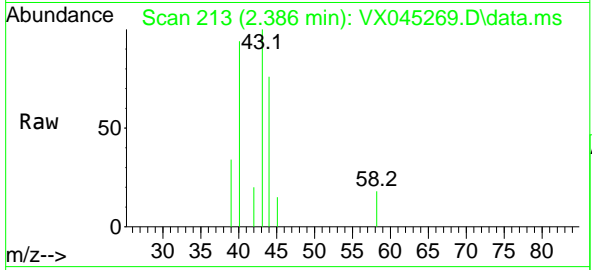
Tgt Ion: 59 Resp: 206
 Ion Ratio Lower Upper
 59 100
 57 0.0 7.8 11.8#



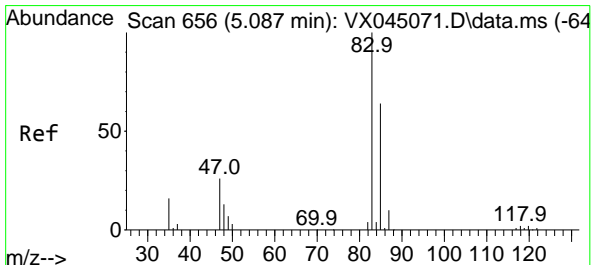
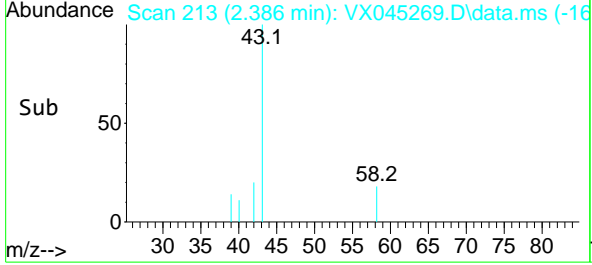
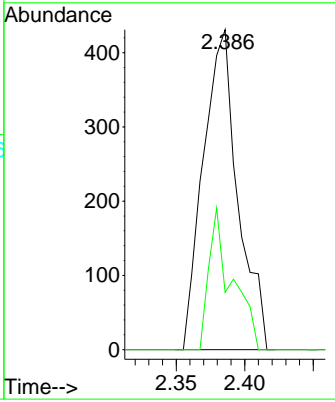


#16
 Acetone
 Concen: 1.536 ug/l
 RT: 2.386 min Scan# 213
 Delta R.T. -0.000 min
 Lab File: VX045269.D
 Acq: 13 Mar 2025 15:10

Instrument : MSVOA_X
 ClientSampleId :

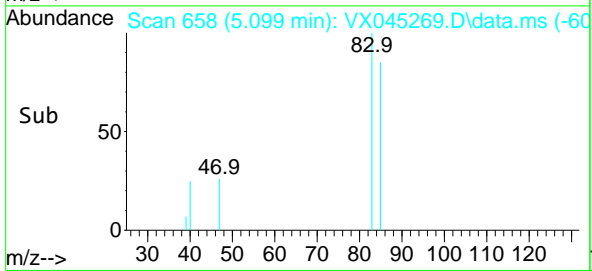
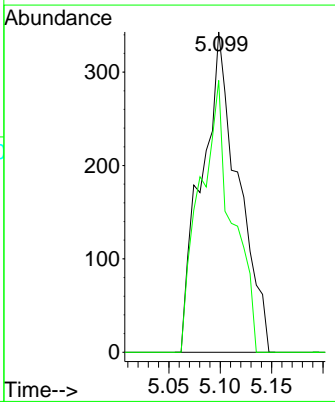
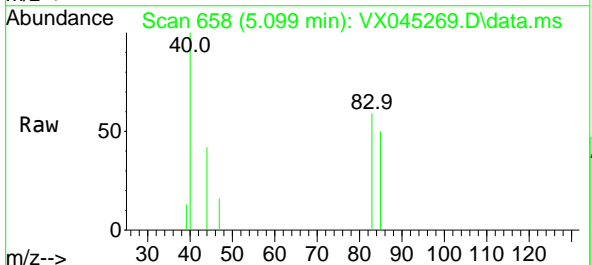


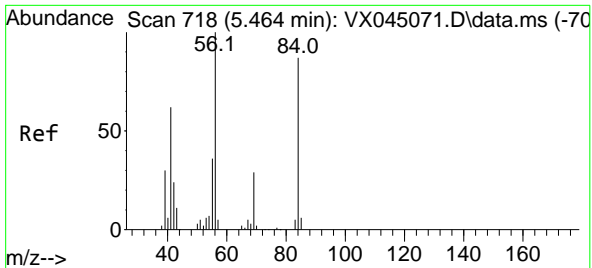
Tgt Ion: 43 Resp: 758
 Ion Ratio Lower Upper
 43 100
 58 17.9 24.2 36.4#



#30
 Chloroform
 Concen: 0.512 ug/l
 RT: 5.099 min Scan# 658
 Delta R.T. 0.012 min
 Lab File: VX045269.D
 Acq: 13 Mar 2025 15:10

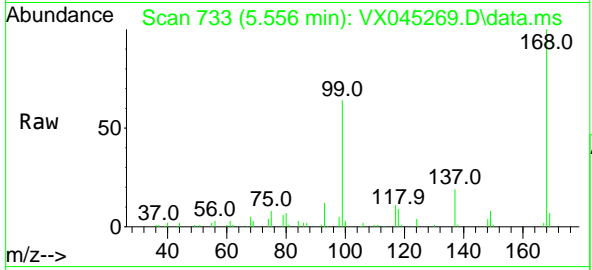
Tgt Ion: 83 Resp: 849
 Ion Ratio Lower Upper
 83 100
 85 84.8 51.4 77.2#



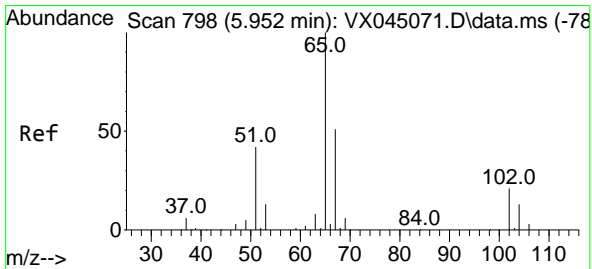
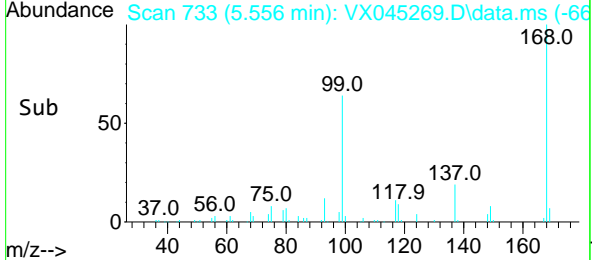
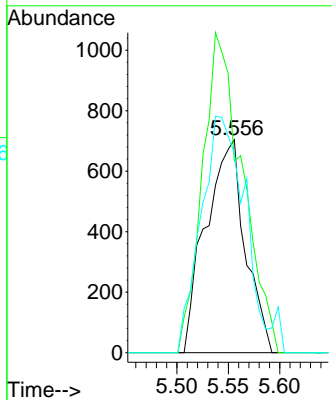


#31
 Cyclohexane
 Concen: 1.293 ug/l
 RT: 5.556 min Scan# 718
 Delta R.T. 0.091 min
 Lab File: VX045269.D
 Acq: 13 Mar 2025 15:10

Instrument :
 MSVOA_X
 ClientSampleId :

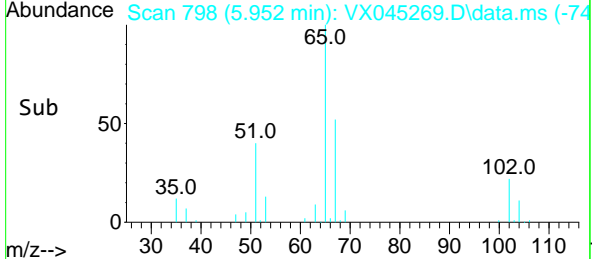
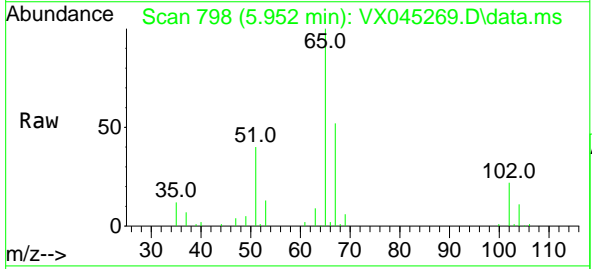
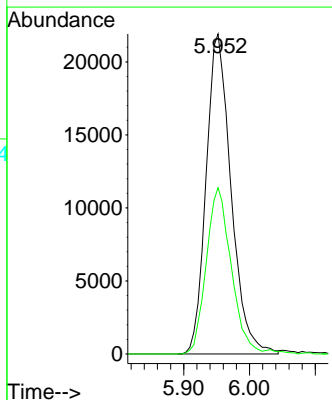


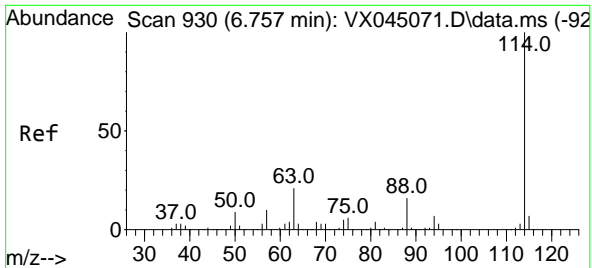
Tgt Ion: 56 Resp: 1871
 Ion Ratio Lower Upper
 56 100
 69 89.9 23.4 35.2#
 84 93.8 69.4 104.2



#33
 1,2-Dichloroethane-d4
 Concen: 54.315 ug/l
 RT: 5.952 min Scan# 798
 Delta R.T. -0.000 min
 Lab File: VX045269.D
 Acq: 13 Mar 2025 15:10

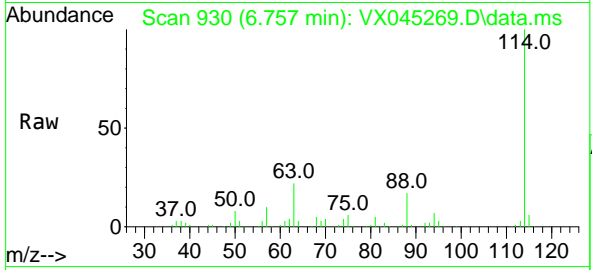
Tgt Ion: 65 Resp: 57782
 Ion Ratio Lower Upper
 65 100
 67 51.6 0.0 106.2





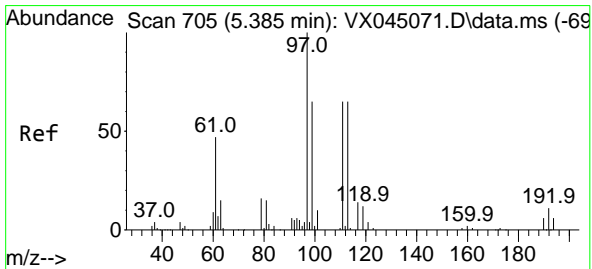
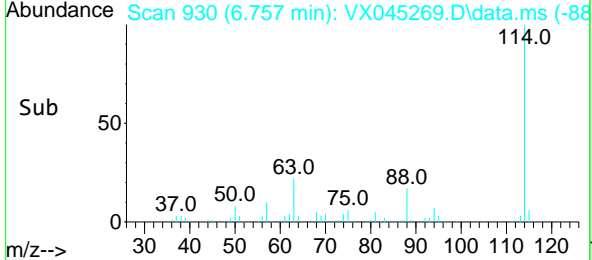
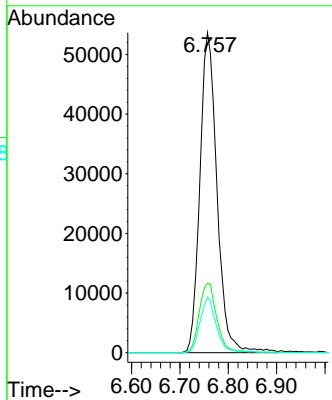
#34
 1,4-Difluorobenzene
 Concen: 50.000 ug/l
 RT: 6.757 min Scan# 91
 Delta R.T. -0.000 min
 Lab File: VX045269.D
 Acq: 13 Mar 2025 15:10

Instrument : MSVOA_X
 ClientSampleId :

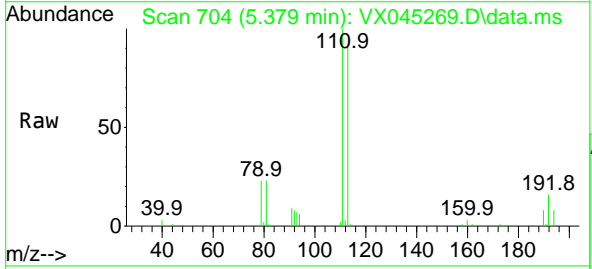


Tgt Ion:114 Resp: 131935

Ion	Ratio	Lower	Upper
114	100		
63	21.7	0.0	41.8
88	17.4	0.0	32.8

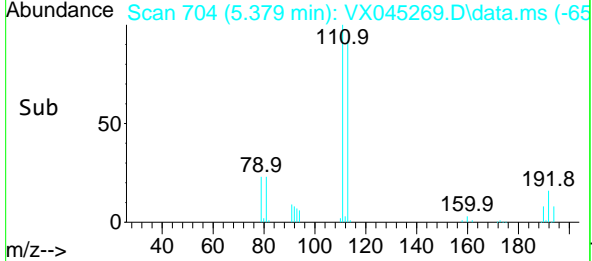
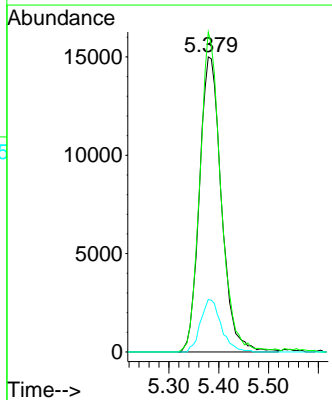


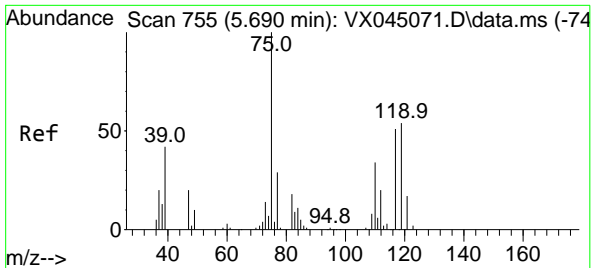
#35
 Dibromofluoromethane
 Concen: 51.962 ug/l
 RT: 5.379 min Scan# 704
 Delta R.T. -0.006 min
 Lab File: VX045269.D
 Acq: 13 Mar 2025 15:10



Tgt Ion:113 Resp: 45842

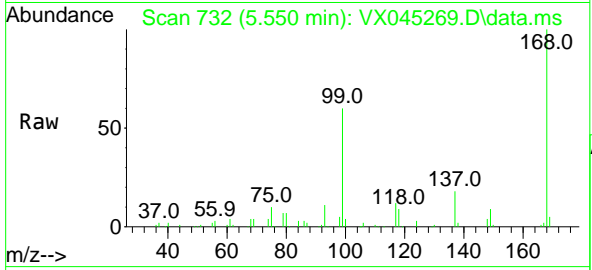
Ion	Ratio	Lower	Upper
113	100		
111	103.0	81.8	122.6
192	16.7	14.3	21.5



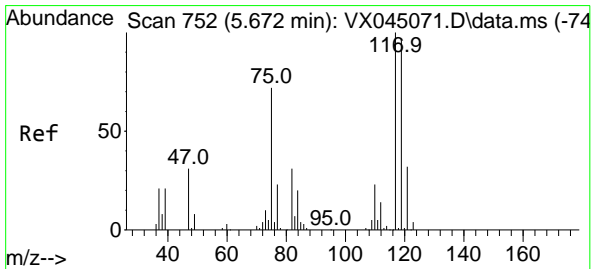
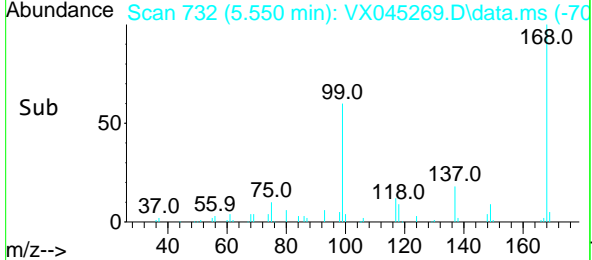
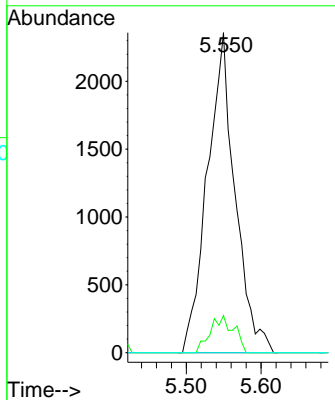


#36
 1,1-Dichloropropene
 Concen: 5.022 ug/l
 RT: 5.550 min Scan# 711
 Delta R.T. -0.140 min
 Lab File: VX045269.D
 Acq: 13 Mar 2025 15:10

Instrument : MSVOA_X
 ClientSampleId :

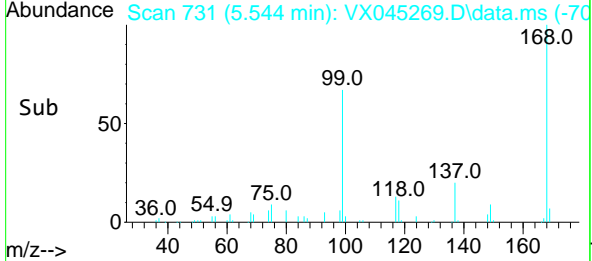
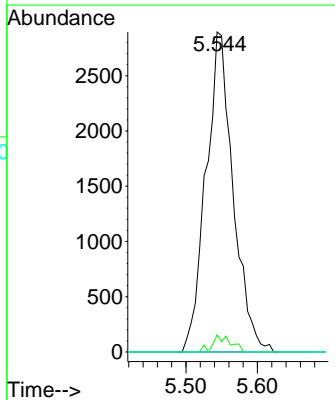
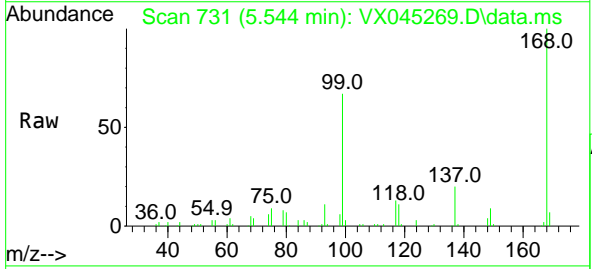


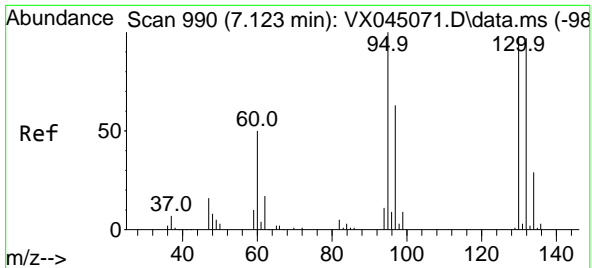
Tgt Ion: 75 Resp: 6076
 Ion Ratio Lower Upper
 75 100
 110 9.8 16.9 50.6#
 77 0.0 24.5 36.7#



#38
 Carbon Tetrachloride
 Concen: 6.220 ug/l
 RT: 5.544 min Scan# 731
 Delta R.T. -0.128 min
 Lab File: VX045269.D
 Acq: 13 Mar 2025 15:10

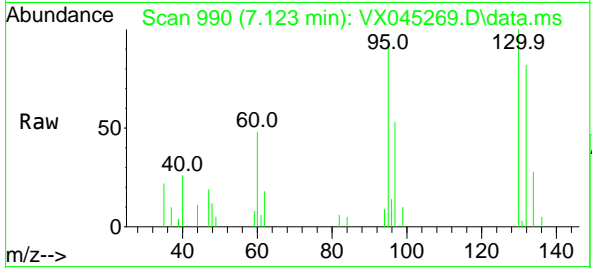
Tgt Ion: 117 Resp: 7640
 Ion Ratio Lower Upper
 117 100
 119 5.4 76.7 115.1#
 121 0.0 25.5 38.3#



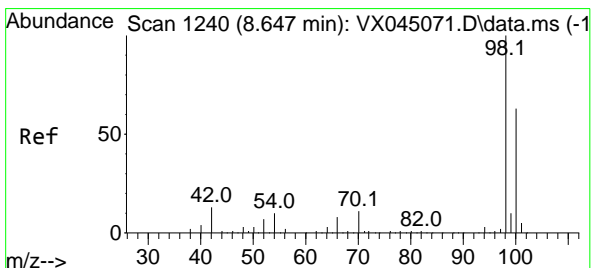
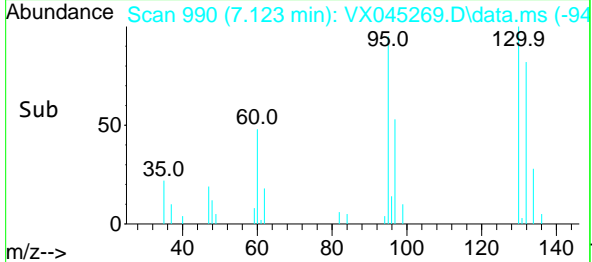
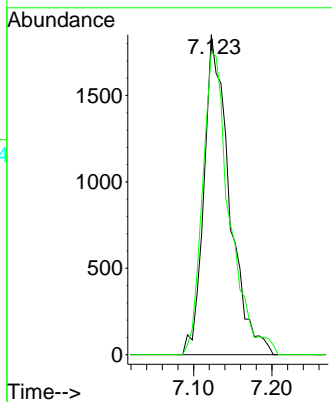


#44
 Trichloroethene
 Concen: 4.682 ug/l
 RT: 7.123 min Scan# 990
 Delta R.T. -0.000 min
 Lab File: VX045269.D
 Acq: 13 Mar 2025 15:10

Instrument : MSVOA_X
 ClientSampleId :

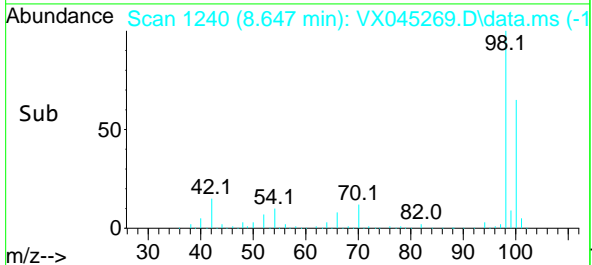
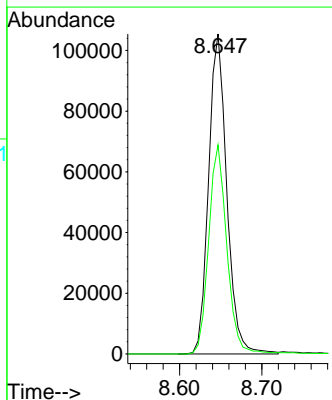
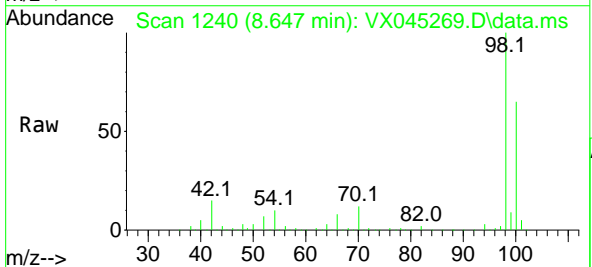


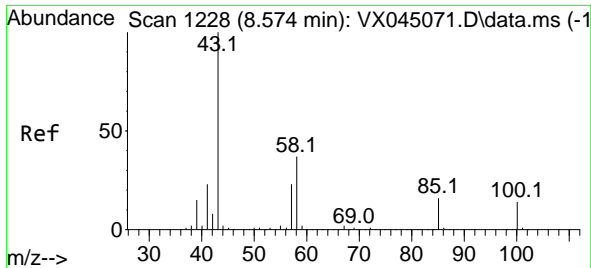
Tgt Ion:130 Resp: 4200
 Ion Ratio Lower Upper
 130 100
 95 94.8 0.0 205.0



#50
 Toluene-d8
 Concen: 50.708 ug/l
 RT: 8.647 min Scan# 1240
 Delta R.T. -0.000 min
 Lab File: VX045269.D
 Acq: 13 Mar 2025 15:10

Tgt Ion: 98 Resp: 162181
 Ion Ratio Lower Upper
 98 100
 100 65.7 52.0 78.0

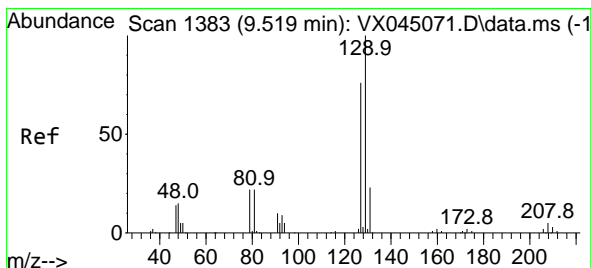
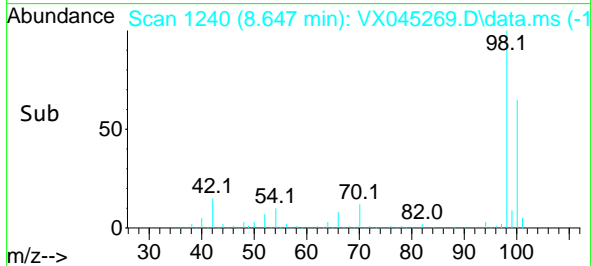
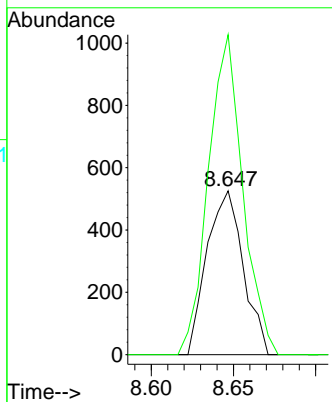
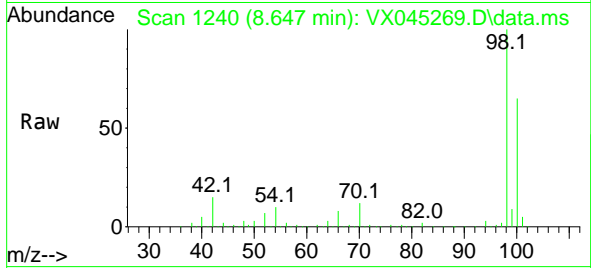




#51
 4-Methyl-2-Pentanone
 Concen: 0.521 ug/l
 RT: 8.647 min Scan# 11
 Delta R.T. 0.073 min
 Lab File: VX045269.D
 Acq: 13 Mar 2025 15:10

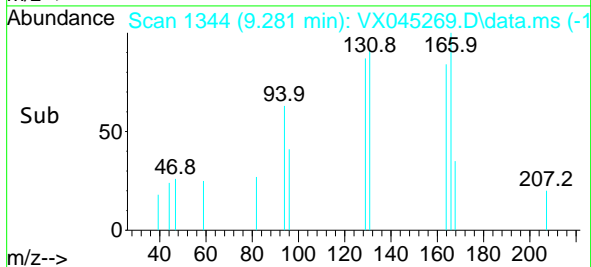
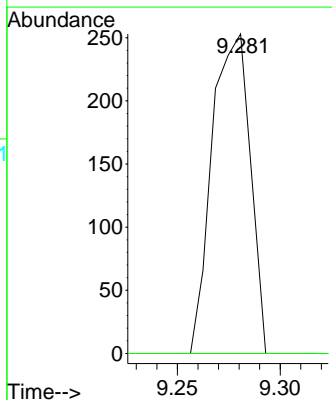
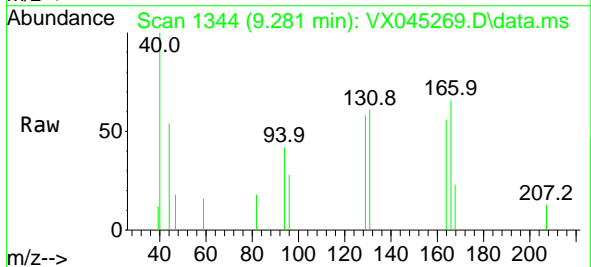
Instrument : MSVOA_X
 ClientSampleId :

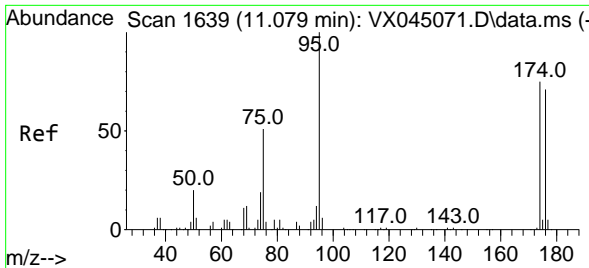
Tgt Ion: 43 Resp: 807
 Ion Ratio Lower Upper
 43 100
 58 185.3 29.2 43.8#



#60
 Dibromochloromethane
 Concen: 0.338 ug/l
 RT: 9.281 min Scan# 1344
 Delta R.T. -0.238 min
 Lab File: VX045269.D
 Acq: 13 Mar 2025 15:10

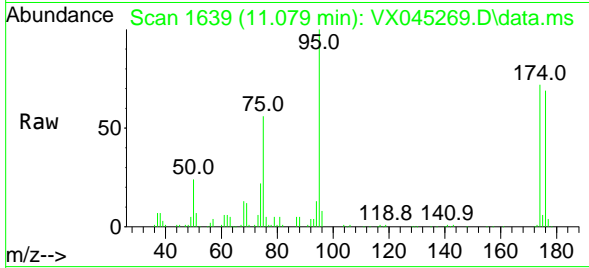
Tgt Ion: 129 Resp: 326
 Ion Ratio Lower Upper
 129 100
 127 0.0 38.5 115.5#



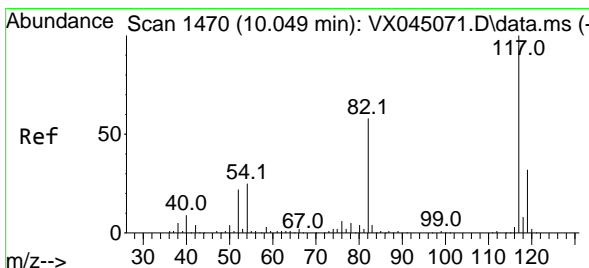
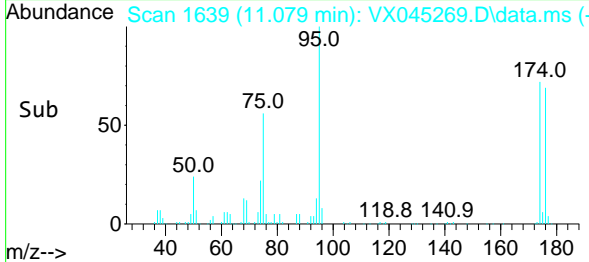
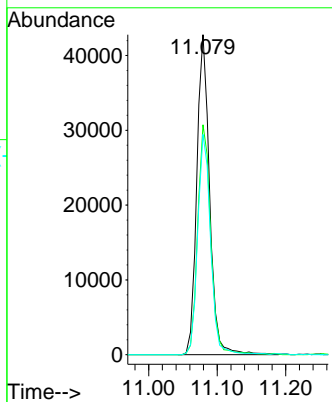


#62
 4-Bromofluorobenzene
 Concen: 52.500 ug/l
 RT: 11.079 min Scan# 1639
 Delta R.T. -0.000 min
 Lab File: VX045269.D
 Acq: 13 Mar 2025 15:10

Instrument : MSVOA_X
 ClientSampleId :

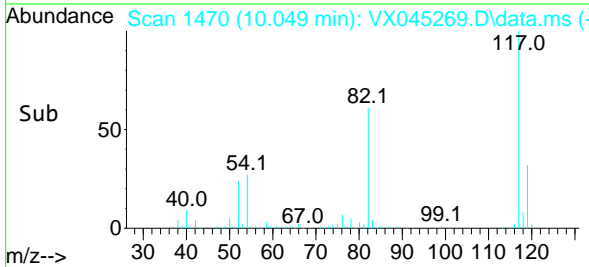
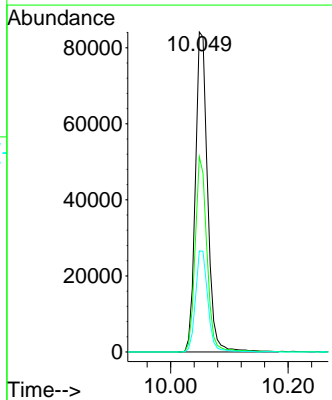
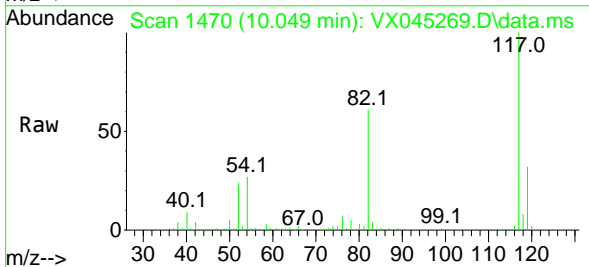


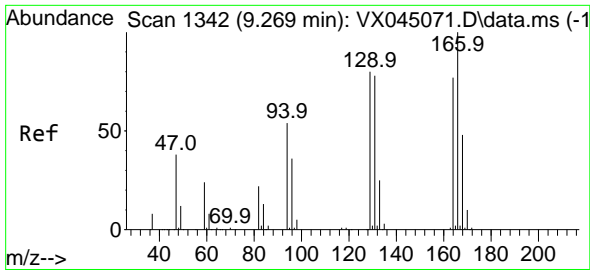
Tgt Ion: 95 Resp: 55641
 Ion Ratio Lower Upper
 95 100
 174 73.4 0.0 148.2
 176 69.4 0.0 141.4



#63
 Chlorobenzene-d5
 Concen: 50.000 ug/l
 RT: 10.049 min Scan# 1470
 Delta R.T. -0.000 min
 Lab File: VX045269.D
 Acq: 13 Mar 2025 15:10

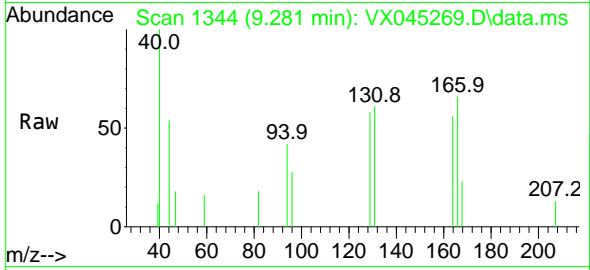
Tgt Ion: 117 Resp: 120933
 Ion Ratio Lower Upper
 117 100
 82 61.0 46.3 69.5
 119 31.6 25.7 38.5



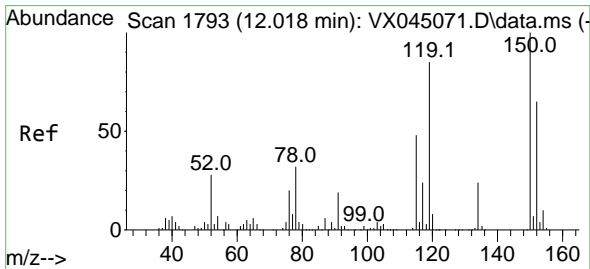
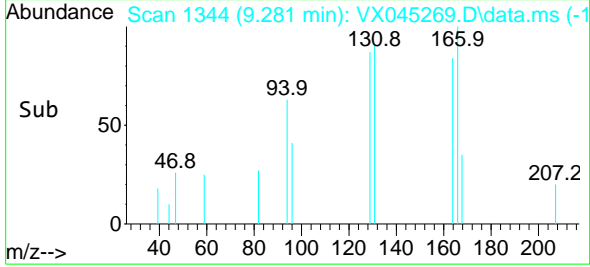
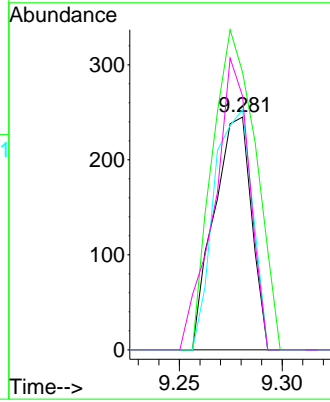


#64
 Tetrachloroethene
 Concen: 0.400 ug/l
 RT: 9.281 min Scan# 11
 Delta R.T. 0.012 min
 Lab File: VX045269.D
 Acq: 13 Mar 2025 15:10

Instrument :
 MSVOA_X
 ClientSampleId :

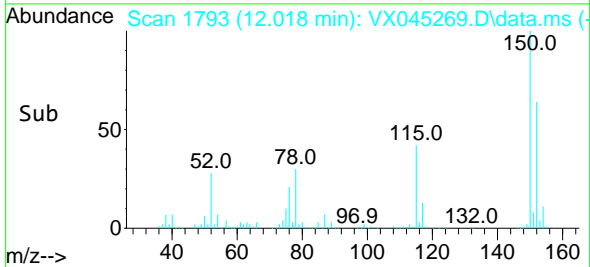
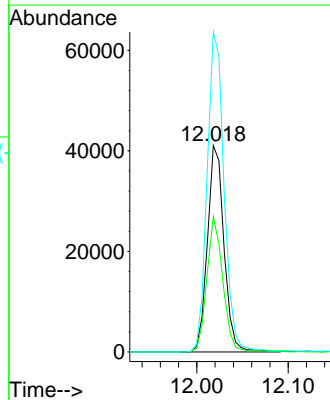
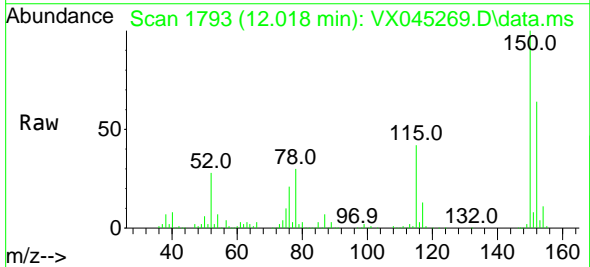


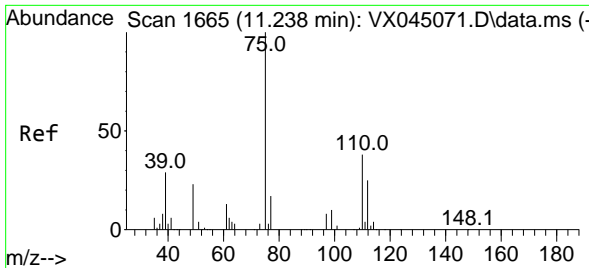
Tgt Ion:164 Resp: 310
 Ion Ratio Lower Upper
 164 100
 166 119.2 103.6 155.4
 129 103.3 82.7 124.1
 131 109.0 80.5 120.7



#72
 1,4-Dichlorobenzene-d4
 Concen: 50.000 ug/l
 RT: 12.018 min Scan# 1793
 Delta R.T. -0.000 min
 Lab File: VX045269.D
 Acq: 13 Mar 2025 15:10

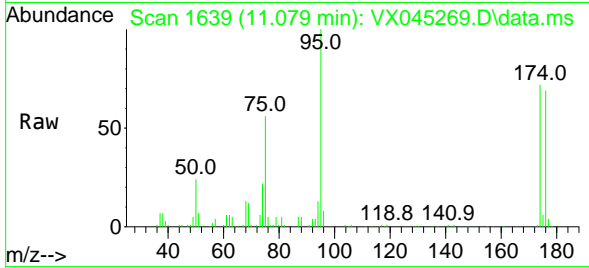
Tgt Ion:152 Resp: 51713
 Ion Ratio Lower Upper
 152 100
 115 63.1 44.2 132.6
 150 157.9 0.0 349.0



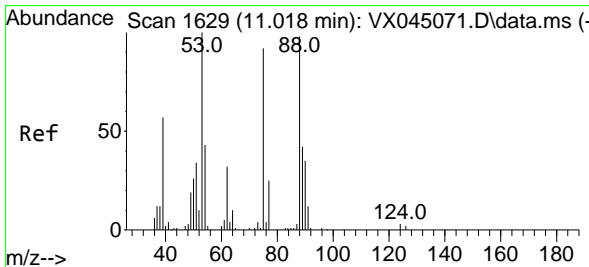
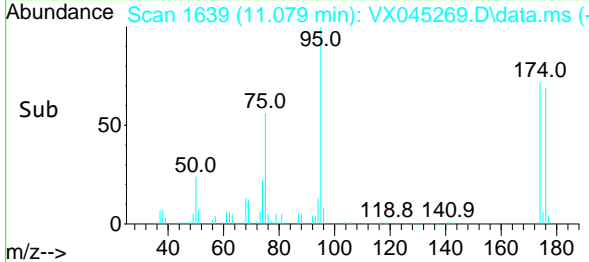
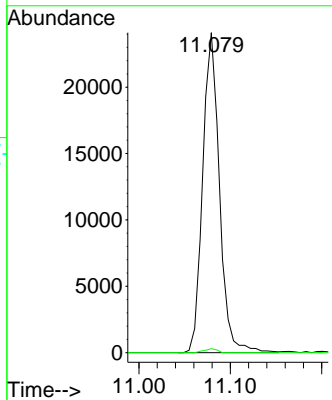


#76
 1,2,3-Trichloropropane
 Concen: 25.490 ug/l
 RT: 11.079 min Scan# 1639
 Delta R.T. -0.159 min
 Lab File: VX045269.D
 Acq: 13 Mar 2025 15:10

Instrument : MSVOA_X
 ClientSampleId :



Tgt Ion: 75 Resp: 30680
 Ion Ratio Lower Upper
 75 100
 77 1.0 20.7 62.1#



#81
 trans-1,4-Dichloro-2-butene
 Concen: 87.230 ug/l
 RT: 11.079 min Scan# 1639
 Delta R.T. 0.061 min
 Lab File: VX045269.D
 Acq: 13 Mar 2025 15:10

Tgt Ion: 75 Resp: 30680
 Ion Ratio Lower Upper
 75 100
 53 0.0 88.5 132.7#
 89 0.0 36.2 54.4#

