

Data Path : Z:\VOASRV\HPCHEM1\MSVOA X\DATA\VX031419\  
 Data File : VX008098.D  
 Acq On : 15 Mar 2019 04:13  
 Operator : JC/SP  
 Sample : K1839-10  
 Misc : 5.0mL/MSVOA X/WATER  
 ALS Vial : 40 Sample Multiplier: 1

Instrument :  
 MSVOA\_X  
 ClientSampleId :  
 DUP03-20190308

Integration Parameters: RTEINT.P  
 Integrator: RTE  
 Smoothing : ON Filtering: 5  
 Sampling : 1 Min Area: 3 % of largest Peak  
 Start Thrs: 0.2 Max Peaks: 100  
 Stop Thrs : 0 Peak Location: TOP

If leading or trailing edge < 100 prefer < Baseline drop else tangent >  
 Peak separation: 5

Method : Z:\VOASRV\HPCHEM1\MSVOA\_X\METHOD\82X031419W.M  
 Title : SW846 8260

Signal : TIC

peak #	R.T. min	first scan	max scan	last scan	PK TY	peak height	corr. area	corr. % max.	% of total
1	5.507	702	714	728	rBV2	162258	468660	5.76%	3.038%
2	5.665	728	740	752	rBV	269316	753310	9.26%	4.884%
3	6.068	795	806	822	rBV	161803	425163	5.22%	2.756%
4	6.860	926	936	948	rBV	416515	971380	11.94%	6.298%
5	7.214	983	994	1017	rBV	3883881	8138580	100.00%	52.765%
6	8.714	1233	1240	1254	rBV	881380	1365328	16.78%	8.852%
7	10.110	1463	1469	1479	rBV	856464	1185672	14.57%	7.687%
8	11.134	1632	1637	1647	rBV	736358	957548	11.77%	6.208%
9	12.079	1786	1792	1804	rVB	914188	1158457	14.23%	7.511%

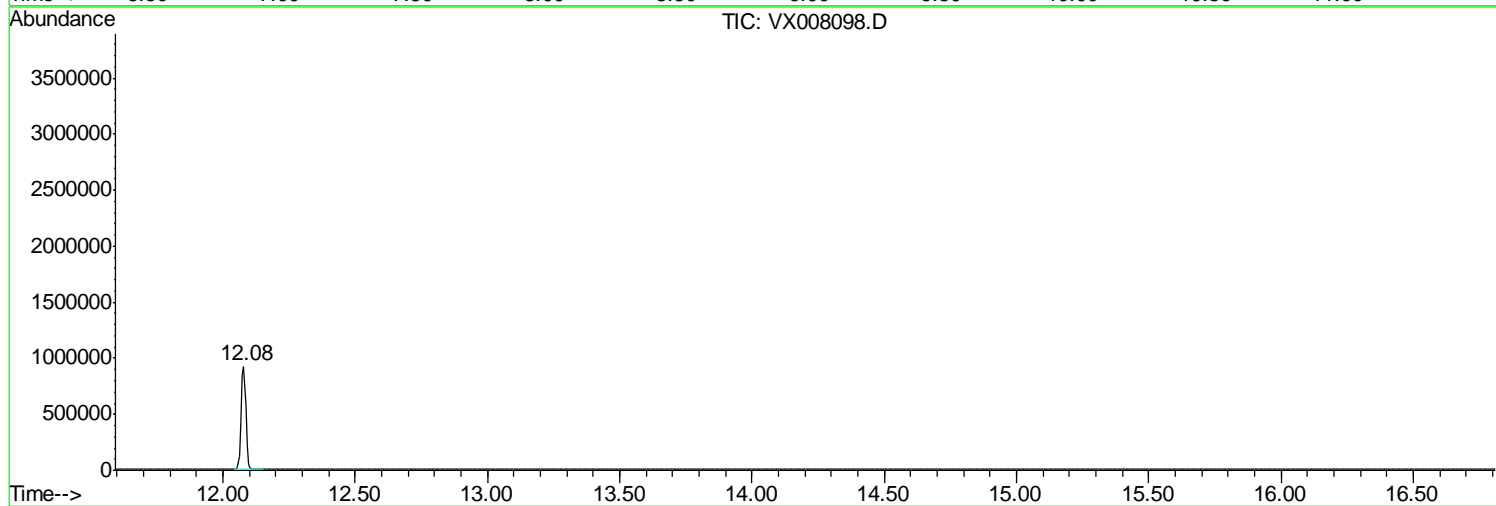
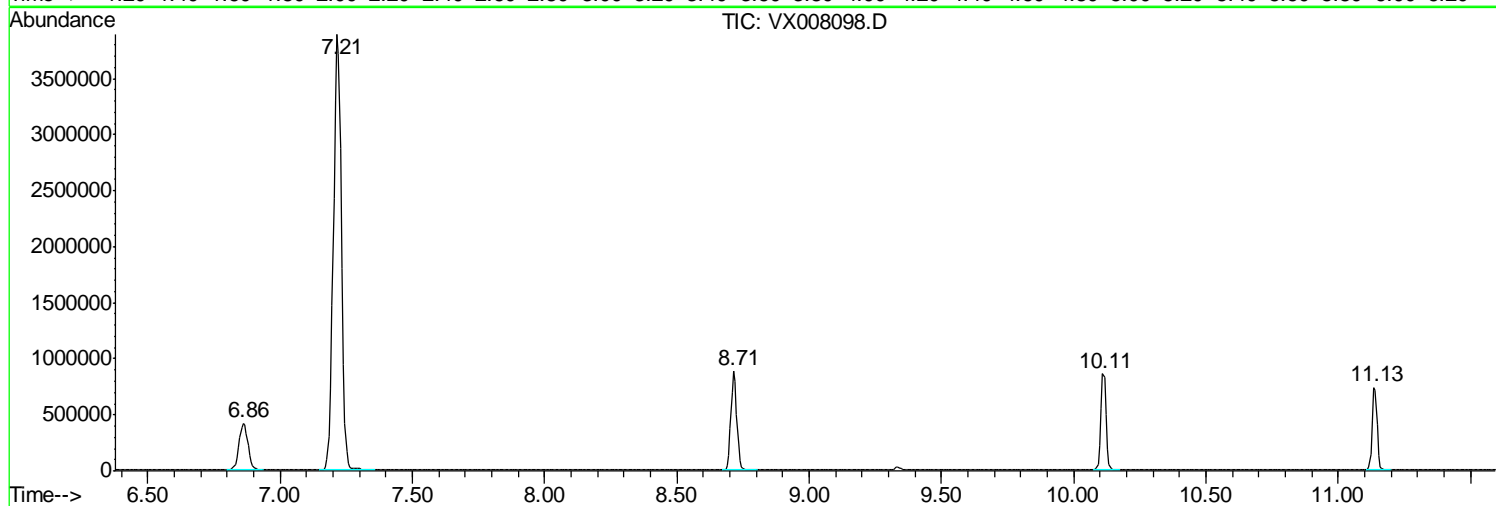
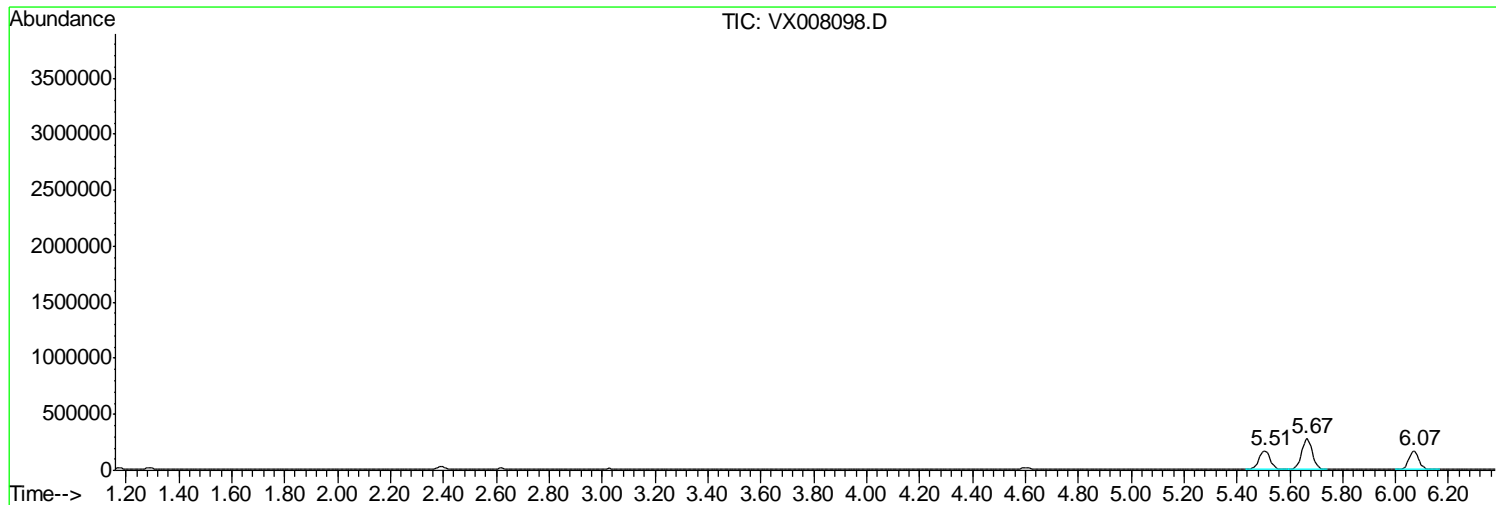
Sum of corrected areas: 15424098

Data Path : Z:\VOASRV\HPCHEM1\MSVOA X\DATA\VX031419\  
Data File : VX008098.D  
Acq On : 15 Mar 2019 04:13  
Operator : JC/SP  
Sample : K1839-10  
Misc : 5.0mL/MSVOA X/WATER  
ALS Vial : 40 Sample Multiplier: 1

Instrument :  
MSVOA\_X  
ClientSampleId :  
DUP03-20190308

Quant Method : Z:\VOASRV\HPCHEM1\MSVOA\_X\METHOD\82X031419W.M  
Quant Title : SW846 8260

TIC Library : C:\DATABASE\NIST11.L  
TIC Integration Parameters: LSCINT.P



Data Path : Z:\VOASRV\HPCHEM1\MSVOA\_X\DATA\VX031419\  
Data File : VX008098.D  
Acq On : 15 Mar 2019 04:13  
Operator : JC/SP  
Sample : K1839-10  
Misc : 5.0mL/MSVOA\_X/WATER  
ALS Vial : 40 Sample Multiplier: 1

Instrument :  
MSVOA\_X  
ClientSampleId :  
DUP03-20190308

Quant Method : Z:\VOASRV\HPCHEM1\MSVOA\_X\METHOD\82X031419W.M  
Quant Title : SW846 8260

TIC Library : C:\DATABASE\NIST11.L  
TIC Integration Parameters: LSCINT.P

No Library Search Compounds Detected

\*\*\*\*\*

Data Path : Z:\VOASRV\HPCHEM1\MSVOA\_X\DATA\VX031419\  
Data File : VX008098.D  
Acq On : 15 Mar 2019 04:13  
Operator : JC/SP  
Sample : K1839-10  
Misc : 5.0mL/MSVOA\_X/WATER  
ALS Vial : 40 Sample Multiplier: 1

Instrument :  
MSVOA\_X  
ClientSampleId :  
DUP03-20190308

Quant Method : Z:\VOASRV\HPCHEM1\MSVOA\_X\METHOD\82X031419W.M  
Quant Title : SW846 8260

TIC Library : C:\DATABASE\NIST11.L  
TIC Integration Parameters: LSCINT.P

TIC Top Hit name	RT	EstConc	Units	Response	--Internal Standard--			
					#	RT	Resp	Conc

---