

Data Path : Z:\voasrv\HPCHEM1\MSVOA_X\Data\VX031422\
 Data File : VX027436.D
 Acq On : 14 Mar 2022 21:06
 Operator : JC/MD
 Sample : N1895-15
 Misc : 5.0mL/MSVOA_X/WATER
 ALS Vial : 22 Sample Multiplier: 1

Instrument :
 MSVOA_X
 ClientSampleId :
 FB031022

Integration Parameters: RTEINT.P
 Integrator: RTE
 Smoothing : ON Filtering: 5
 Sampling : 1 Min Area: 3 % of largest Peak
 Start Thrs: 0.2 Max Peaks: 100
 Stop Thrs : 0 Peak Location: TOP

If leading or trailing edge < 100 prefer < Baseline drop else tangent >
 Peak separation: 5

Method : Z:\voasrv\HPCHEM1\MSVOA_X\Method\82X030822W.M
 Title : SW846 8260

Signal : TIC: VX027436.D\data.ms

peak #	R.T. min	first scan	max scan	last scan	PK TY	peak height	corr. area	corr. % max.	% of total
1	1.252	22	27	40	rVB2	13756	34011	2.16%	0.392%
2	2.538	231	238	249	rBV	11258	21317	1.35%	0.246%
3	5.391	693	706	721	rBV2	195902	570380	36.18%	6.575%
4	5.556	721	733	748	rVV	325798	910541	57.76%	10.496%
5	5.958	789	799	814	rBV	201465	533126	33.82%	6.146%
6	6.763	921	931	949	rBV	496833	1175098	74.54%	13.546%
7	8.653	1234	1241	1257	rBV	1009093	1576548	100.00%	18.174%
8	10.055	1465	1471	1482	rBV	1057040	1418207	89.96%	16.349%
9	11.085	1634	1640	1650	rBV	869327	1104376	70.05%	12.731%
10	12.024	1788	1794	1801	rBV	1116479	1331196	84.44%	15.346%

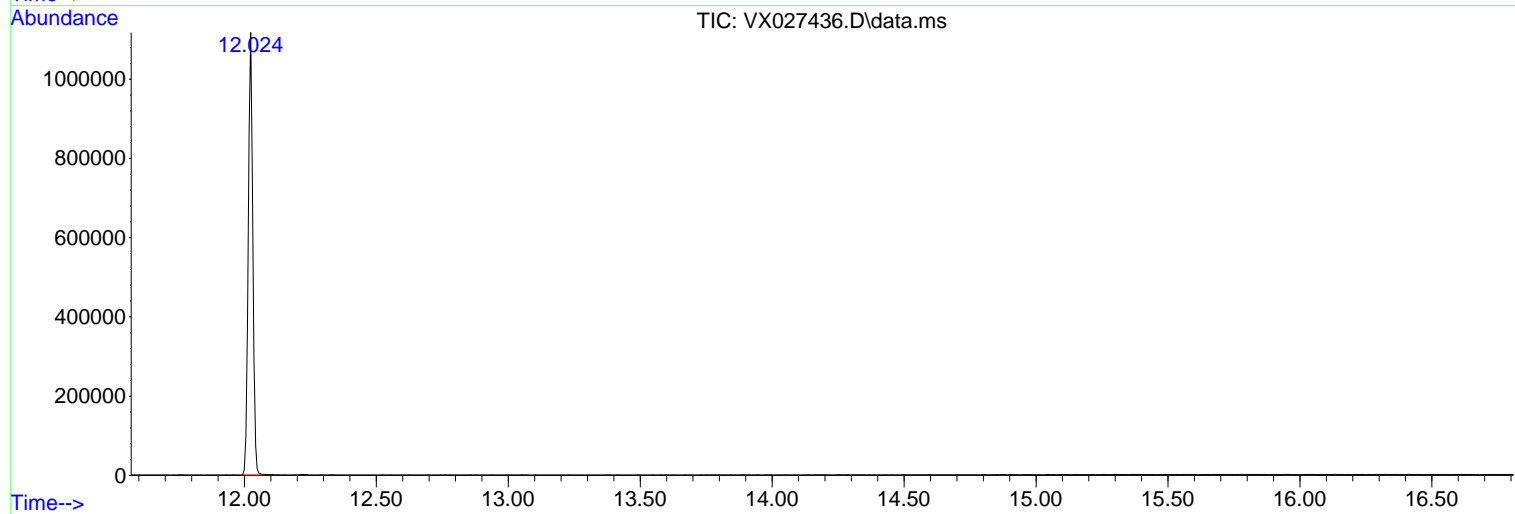
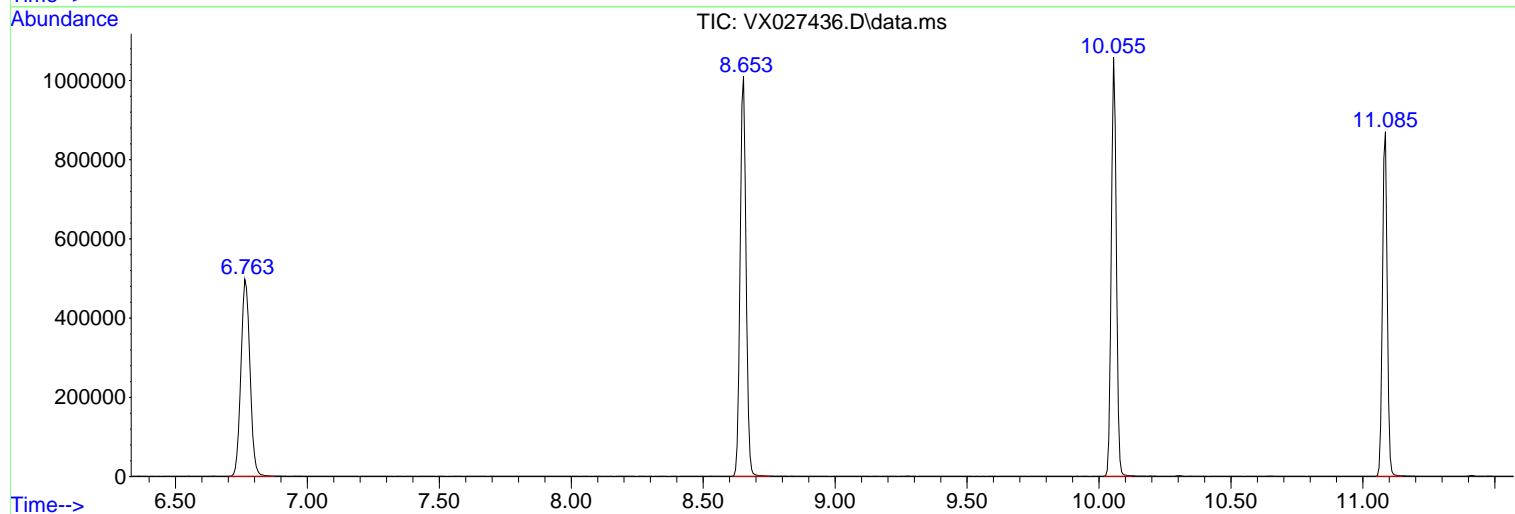
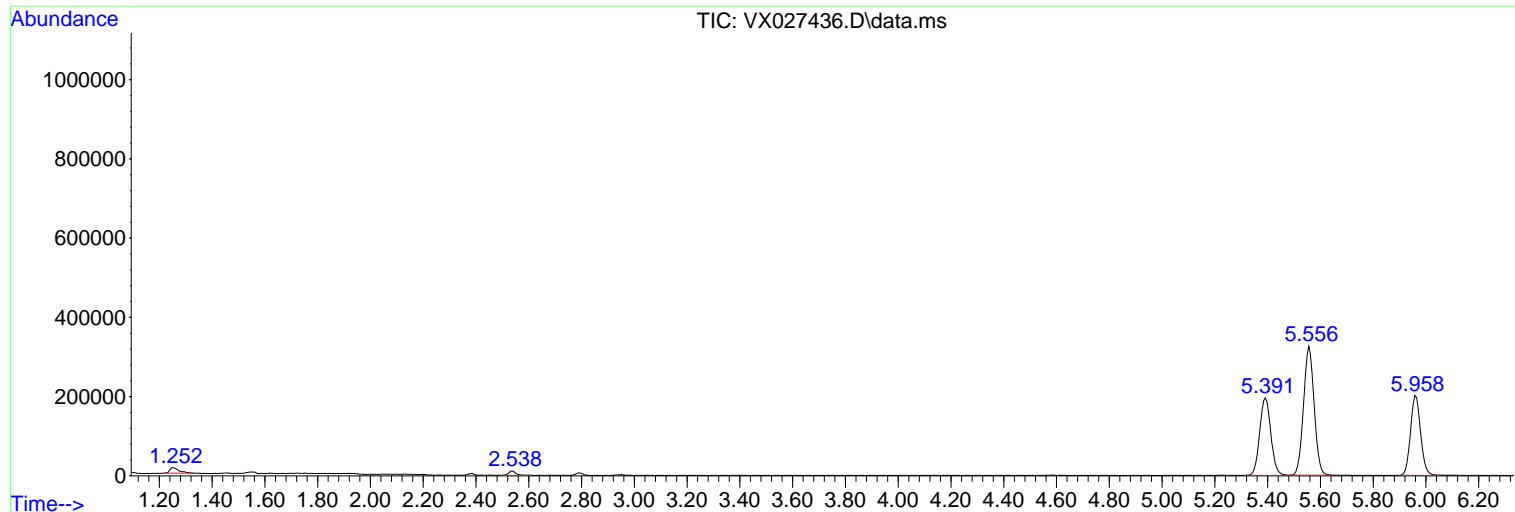
Sum of corrected areas: 8674800

Data Path : Z:\voasrv\HPCHEM1\MSVOA_X\Data\VX031422\
 Data File : VX027436.D
 Acq On : 14 Mar 2022 21:06
 Operator : JC/MD
 Sample : N1895-15
 Misc : 5.0mL/MSVOA_X/WATER
 ALS Vial : 22 Sample Multiplier: 1

Instrument :
 MSVOA_X
 ClientSampleId :
 FB031022

Quant Method : Z:\voasrv\HPCHEM1\MSVOA_X\Method\82X030822W.M
 Quant Title : SW846 8260

TIC Library : C:\Database\NIST20.L
 TIC Integration Parameters: LSCINT.P



Library Search Compound Report

Data Path : Z:\voasrv\HPCHEM1\MSVOA_X\Data\VX031422\
Data File : VX027436.D
Acq On : 14 Mar 2022 21:06
Operator : JC/MD
Sample : N1895-15
Misc : 5.0mL/MSVOA_X/WATER
ALS Vial : 22 Sample Multiplier: 1

Instrument :
MSVOA_X
ClientSampleId :
FB031022

Quant Method : Z:\voasrv\HPCHEM1\MSVOA_X\Method\82X030822W.M
Quant Title : SW846 8260

TIC Library : C:\Database\NIST20.L
TIC Integration Parameters: LSCINT.P

No Library Search Compounds Detected

Data Path : Z:\voasrv\HPCHEM1\MSVOA_X\Data\VX031422\
Data File : VX027436.D
Acq On : 14 Mar 2022 21:06
Operator : JC/MD
Sample : N1895-15
Misc : 5.0mL/MSVOA_X/WATER
ALS Vial : 22 Sample Multiplier: 1

Instrument :
MSVOA_X
ClientSampleId :
FB031022

Quant Method : Z:\voasrv\HPCHEM1\MSVOA_X\Method\82X030822W.M
Quant Title : SW846 8260

TIC Library : C:\Database\NIST20.L
TIC Integration Parameters: LSCINT.P

TIC Top Hit name	RT	EstConc	Units	Response	--Internal Standard--			
					#	RT	Resp	Conc
