

Data Path : Z:\voasrv\HPCHEM1\MSVOA\_X\Data\VX031423\  
 Data File : VX034467.D  
 Acq On : 14 Mar 2023 16:07  
 Operator : JC/MD  
 Sample : 01880-13DL 10X  
 Misc : 5.0mL/MSVOA\_X/WATER  
 ALS Vial : 20 Sample Multiplier: 1

Instrument :  
 MSVOA\_X  
 ClientSampleId :  
 RE120D2-20230310DL

Integration Parameters: RTEINT.P  
 Integrator: RTE  
 Smoothing : ON Filtering: 5  
 Sampling : 1 Min Area: 3 % of largest Peak  
 Start Thrs: 0.2 Max Peaks: 100  
 Stop Thrs : 0 Peak Location: TOP

If leading or trailing edge < 100 prefer < Baseline drop else tangent >  
 Peak separation: 5

Method : Z:\voasrv\HPCHEM1\MSVOA\_X\Method\82X031023W.M  
 Title : SW846 8260

Signal : TIC: VX034467.D\data.ms

peak #	R.T. min	first scan	max scan	last scan	PK TY	peak height	corr. area	corr. % max.	% of total
1	1.252	22	27	35	rBV	16524	36969	2.67%	0.444%
2	1.575	71	80	83	rBV3	8981	19000	1.37%	0.228%
3	2.331	197	204	210	rBV2	20772	39139	2.83%	0.470%
4	2.941	296	304	313	rBV	15744	35172	2.54%	0.422%
5	4.562	562	570	581	rVB2	6467	20354	1.47%	0.244%
6	5.385	691	705	721	rBV2	154676	449882	32.51%	5.400%
7	5.550	721	732	748	rVB2	257301	734151	53.05%	8.813%
8	5.952	789	798	816	rBV	177161	473943	34.25%	5.689%
9	6.763	920	931	954	rBV	413266	999671	72.24%	12.000%
10	7.123	979	990	1006	rBV	461671	1015860	73.41%	12.195%
11	8.647	1233	1240	1254	rBV	891786	1383791	100.00%	16.611%
12	9.275	1337	1343	1350	rBV2	12924	18641	1.35%	0.224%
13	10.055	1465	1471	1481	rBV	829887	1165687	84.24%	13.993%
14	11.079	1634	1639	1653	rBV	728678	923867	66.76%	11.090%
15	12.018	1788	1793	1804	rBV	775546	1014284	73.30%	12.176%

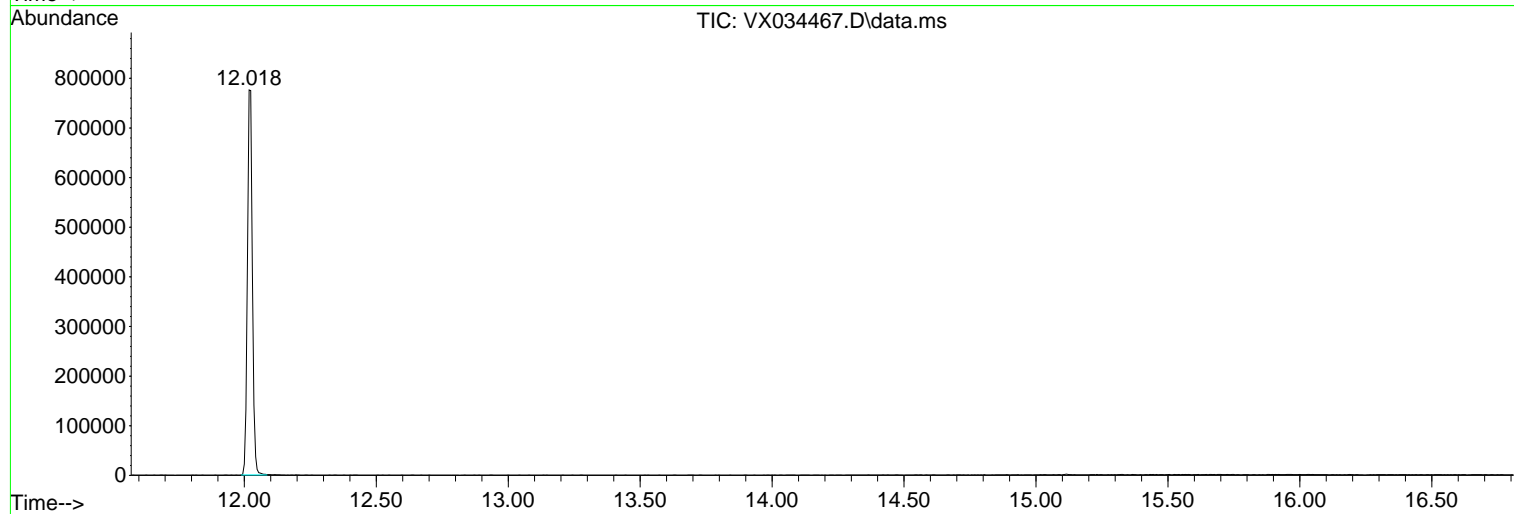
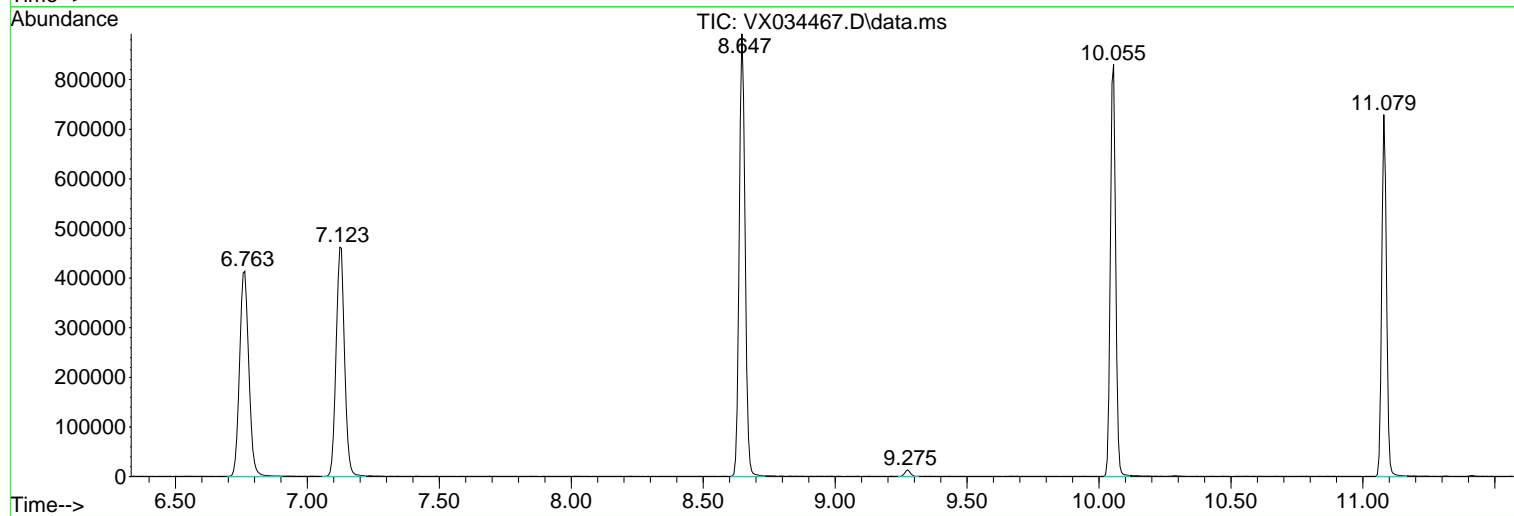
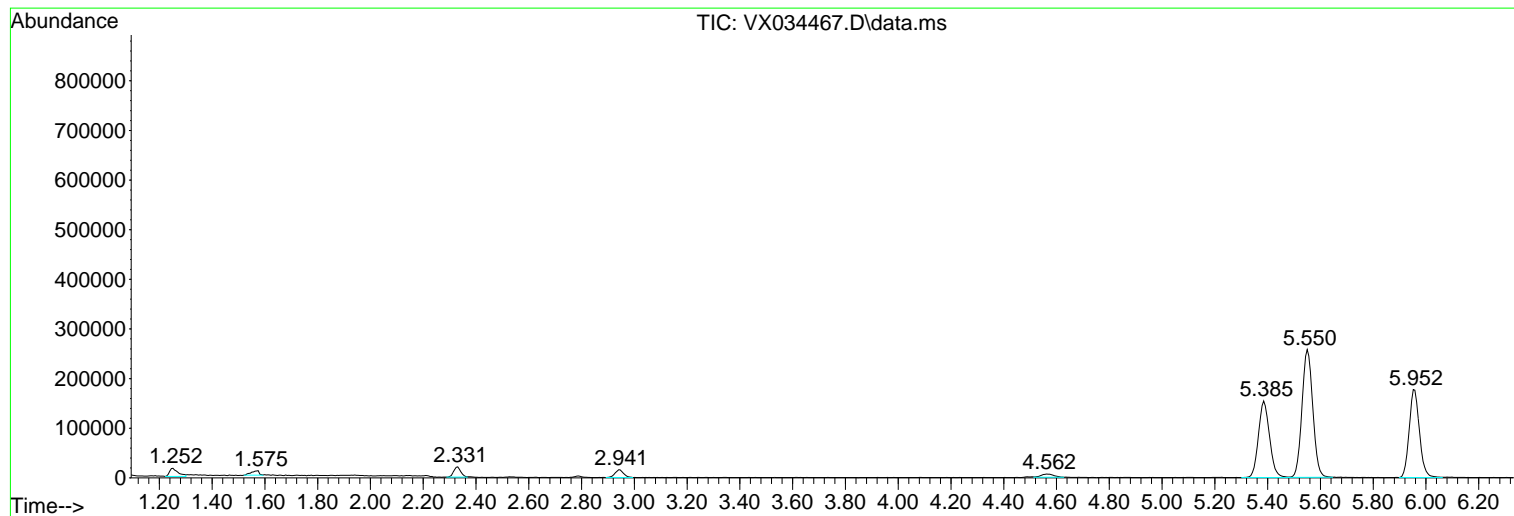
Sum of corrected areas: 8330411

Data Path : Z:\voasrv\HPCHEM1\MSVOA\_X\Data\VX031423\  
Data File : VX034467.D  
Acq On : 14 Mar 2023 16:07  
Operator : JC/MD  
Sample : 01880-13DL 10X  
Misc : 5.0mL/MSVOA\_X/WATER  
ALS Vial : 20 Sample Multiplier: 1

Instrument :  
MSVOA\_X  
ClientSampleId :  
RE120D2-20230310DL

Quant Method : Z:\voasrv\HPCHEM1\MSVOA\_X\Method\82X031023W.M  
Quant Title : SW846 8260

TIC Library : C:\Database\NIST20.L  
TIC Integration Parameters: LSCINT.P



Library Search Compound Report

Data Path : Z:\voasrv\HPCHEM1\MSVOA\_X\Data\VX031423\  
Data File : VX034467.D  
Acq On : 14 Mar 2023 16:07  
Operator : JC/MD  
Sample : 01880-13DL 10X  
Misc : 5.0mL/MSVOA\_X/WATER  
ALS Vial : 20 Sample Multiplier: 1

Instrument :  
MSVOA\_X  
ClientSampleId :  
RE120D2-20230310DL

Quant Method : Z:\voasrv\HPCHEM1\MSVOA\_X\Method\82X031023W.M  
Quant Title : SW846 8260

TIC Library : C:\Database\NIST20.L  
TIC Integration Parameters: LSCINT.P

No Library Search Compounds Detected

\*\*\*\*\*

Data Path : Z:\voasrv\HPCHEM1\MSVOA\_X\Data\VX031423\  
Data File : VX034467.D  
Acq On : 14 Mar 2023 16:07  
Operator : JC/MD  
Sample : 01880-13DL 10X  
Misc : 5.0mL/MSVOA\_X/WATER  
ALS Vial : 20 Sample Multiplier: 1

Instrument :  
MSVOA\_X  
ClientSampleId :  
RE120D2-20230310DL

Quant Method : Z:\voasrv\HPCHEM1\MSVOA\_X\Method\82X031023W.M  
Quant Title : SW846 8260

TIC Library : C:\Database\NIST20.L  
TIC Integration Parameters: LSCINT.P

TIC Top Hit name	RT	EstConc	Units	Response	--Internal Standard--			
					#	RT	Resp	Conc

---