

Data Path : Z:\voasrv\HPCHEM1\MSVOA_X\Data\VX031423\
 Data File : VX034496.D
 Acq On : 15 Mar 2023 10:08
 Operator : JC/MD
 Sample : 01903-16
 Misc : 5.0mL/MSVOA_X/WATER
 ALS Vial : 52 Sample Multiplier: 1

Instrument :
 MSVOA_X
 ClientSampleId :
 RE131D1-20230312

Integration Parameters: RTEINT.P
 Integrator: RTE
 Smoothing : ON Filtering: 5
 Sampling : 1 Min Area: 3 % of largest Peak
 Start Thrs: 0.2 Max Peaks: 100
 Stop Thrs : 0 Peak Location: TOP

If leading or trailing edge < 100 prefer < Baseline drop else tangent >
 Peak separation: 5

Method : Z:\voasrv\HPCHEM1\MSVOA_X\Method\82X031023W.M
 Title : SW846 8260

Signal : TIC: VX034496.D\data.ms

peak #	R.T. min	first scan	max scan	last scan	PK TY	peak height	corr. area	corr. % max.	% of total
1	2.325	196	203	210	rBV3	28478	56841	1.33%	0.480%
2	4.489	549	558	569	rBV	21001	57379	1.34%	0.485%
3	5.385	694	705	721	rBV	152764	437980	10.23%	3.702%
4	5.550	721	732	750	rVB2	252022	722348	16.87%	6.105%
5	5.958	789	799	816	rBV	178504	476751	11.13%	4.029%
6	6.757	920	930	948	rBV	411808	982750	22.95%	8.306%
7	7.123	980	990	1009	rBV	1993272	4282316	100.00%	36.193%
8	8.647	1234	1240	1253	rBV	863959	1360108	31.76%	11.495%
9	9.275	1336	1343	1351	rBV	251783	369280	8.62%	3.121%
10	10.055	1465	1471	1482	rBV	852895	1152513	26.91%	9.741%
11	11.079	1634	1639	1657	rBV	752295	937427	21.89%	7.923%
12	12.024	1788	1794	1802	rBV	764795	996141	23.26%	8.419%

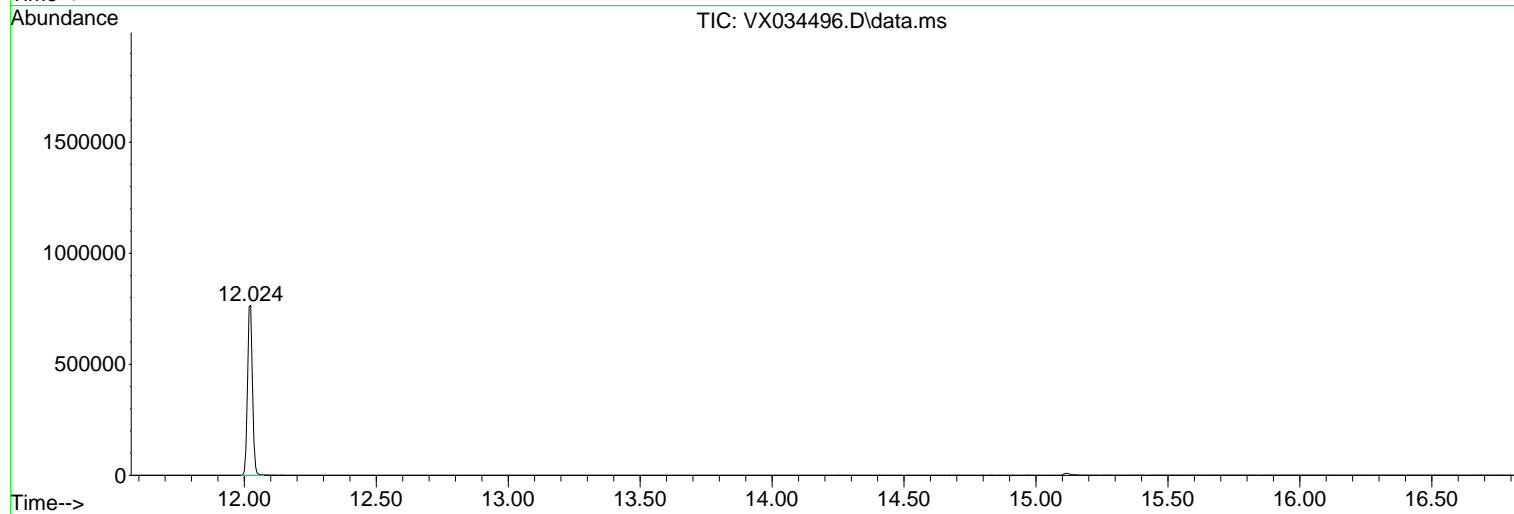
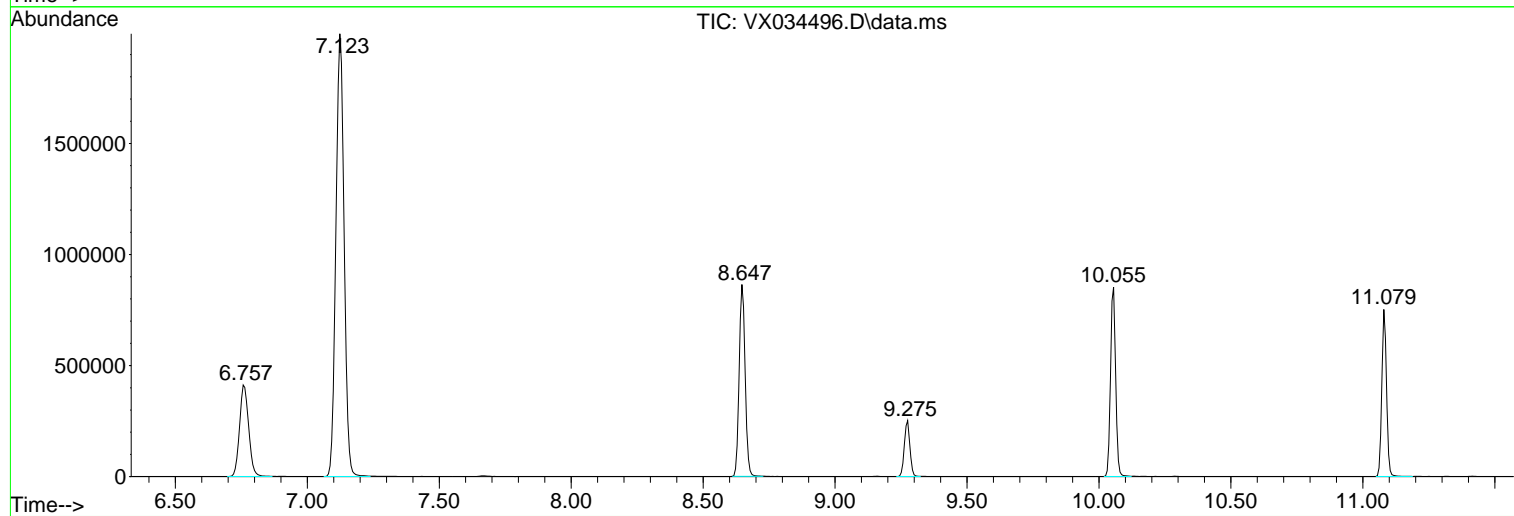
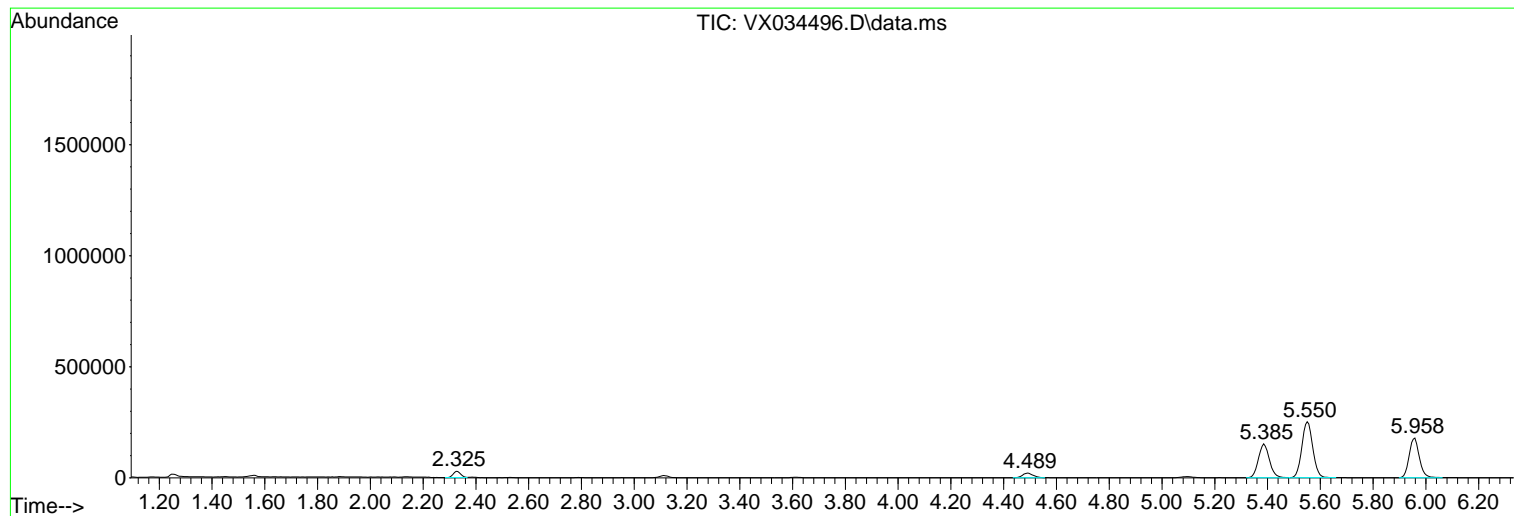
Sum of corrected areas: 11831834

Data Path : Z:\voasrv\HPCHEM1\MSVOA_X\Data\VX031423\
Data File : VX034496.D
Acq On : 15 Mar 2023 10:08
Operator : JC/MD
Sample : 01903-16
Misc : 5.0mL/MSVOA_X/WATER
ALS Vial : 52 Sample Multiplier: 1

Instrument :
MSVOA_X
ClientSampleId :
RE131D1-20230312

Quant Method : Z:\voasrv\HPCHEM1\MSVOA_X\Method\82X031023W.M
Quant Title : SW846 8260

TIC Library : C:\Database\NIST20.L
TIC Integration Parameters: LSCINT.P



Library Search Compound Report

Data Path : Z:\voasrv\HPCHEM1\MSVOA_X\Data\VX031423\
Data File : VX034496.D
Acq On : 15 Mar 2023 10:08
Operator : JC/MD
Sample : 01903-16
Misc : 5.0mL/MSVOA_X/WATER
ALS Vial : 52 Sample Multiplier: 1

Instrument :
MSVOA_X
ClientSampleId :
RE131D1-20230312

Quant Method : Z:\voasrv\HPCHEM1\MSVOA_X\Method\82X031023W.M
Quant Title : SW846 8260

TIC Library : C:\Database\NIST20.L
TIC Integration Parameters: LSCINT.P

No Library Search Compounds Detected

Data Path : Z:\voasrv\HPCHEM1\MSVOA_X\Data\VX031423\
Data File : VX034496.D
Acq On : 15 Mar 2023 10:08
Operator : JC/MD
Sample : 01903-16
Misc : 5.0mL/MSVOA_X/WATER
ALS Vial : 52 Sample Multiplier: 1

Instrument :
MSVOA_X
ClientSampleId :
RE131D1-20230312

Quant Method : Z:\voasrv\HPCHEM1\MSVOA_X\Method\82X031023W.M
Quant Title : SW846 8260

TIC Library : C:\Database\NIST20.L
TIC Integration Parameters: LSCINT.P

TIC Top Hit name	RT	EstConc	Units	Response	--Internal Standard--		
					#	RT	Resp Conc
