

Data Path : Z:\voasrv\HPCHEM1\MSVOA\_X\Data\VX031521\  
 Data File : VX021209.D  
 Acq On : 15 Mar 2021 18:54  
 Operator : JC/MD  
 Sample : M1647-18  
 Misc : 5.0mL/MSVOA\_X/WATER  
 ALS Vial : 24 Sample Multiplier: 1

Instrument :  
 MSVOA\_X  
 ClientSampleId :  
 COMP1-41730:31

Quant Time: Mar 16 03:04:54 2021  
 Quant Method : Z:\voasrv\HPCHEM1\MSVOA\_X\Method\82X031521W.M  
 Quant Title : SW846 8260  
 QLast Update : Mon Mar 15 11:55:59 2021  
 Response via : Initial Calibration

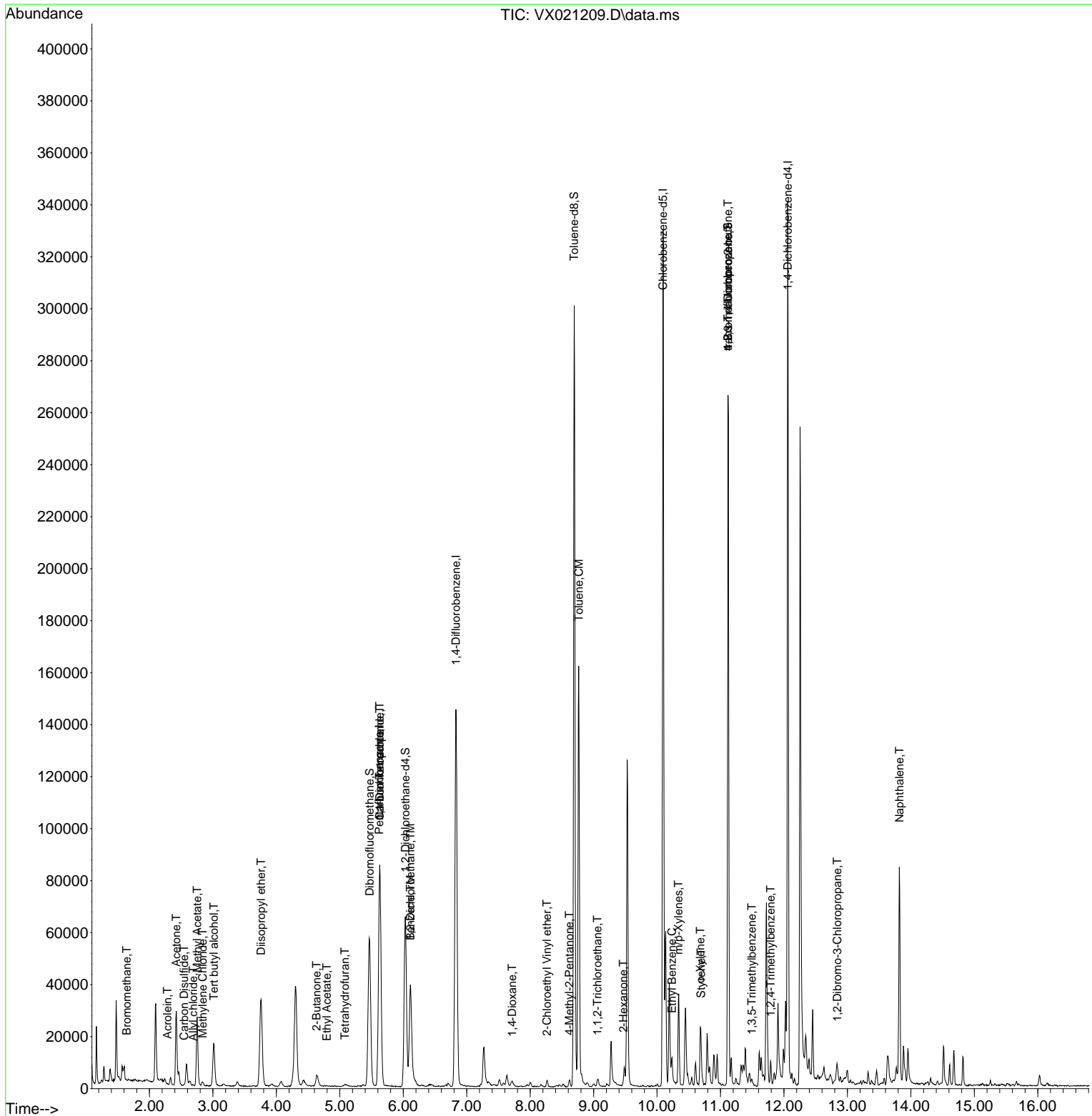
Compound	R.T.	QIon	Response	Conc	Units	Dev(Min)
-----						
Internal Standards						
1) Pentafluorobenzene	5.623	168	73162	50.00	ug/l	0.00
34) 1,4-Difluorobenzene	6.829	114	135286	50.00	ug/l	0.00
63) Chlorobenzene-d5	10.094	117	131377	50.00	ug/l	0.00
72) 1,4-Dichlorobenzene-d4	12.059	152	59003	50.00	ug/l	0.00
System Monitoring Compounds						
33) 1,2-Dichloroethane-d4	6.035	65	64924	52.04	ug/l	0.00
Spiked Amount	50.000	Range 61 - 141	Recovery	=	104.08%	
35) Dibromofluoromethane	5.470	113	47325	50.84	ug/l	0.00
Spiked Amount	50.000	Range 69 - 133	Recovery	=	101.68%	
50) Toluene-d8	8.694	98	169698	50.75	ug/l	0.00
Spiked Amount	50.000	Range 65 - 126	Recovery	=	101.50%	
62) 4-Bromofluorobenzene	11.118	95	68899	54.07	ug/l	0.00
Spiked Amount	50.000	Range 58 - 135	Recovery	=	108.14%	
Target Compounds						
						Qvalue
5) Bromomethane	1.640	94	164	0.30	ug/l #	51
11) Tert butyl alcohol	3.017	59	7702	35.44	ug/l #	89
13) Acrolein	2.281	56	84	0.63	ug/l #	64
14) Allyl chloride	2.687	41	382	0.22	ug/l #	25
16) Acetone	2.422	43	30487	60.80	ug/l	89
17) Carbon Disulfide	2.546	76	499	0.21	ug/l #	75
18) Methyl Acetate	2.752	43	30397	25.03	ug/l	90
20) Methylene Chloride	2.840	84	515	0.54	ug/l #	77
22) Diisopropyl ether	3.758	45	1370	0.44	ug/l #	15
25) 2-Butanone	4.634	43	6933	9.61	ug/l #	88
29) Tetrahydrofuran	5.082	42	135	0.29	ug/l #	27
36) 1,1-Dichloropropene	5.629	75	7093	5.00	ug/l #	49
37) Ethyl Acetate	4.793	43	620	0.40	ug/l #	64
38) Carbon Tetrachloride	5.629	117	8258	5.30	ug/l #	17
40) Benzene	6.111	78	42590	10.75	ug/l	99
42) 1,2-Dichloroethane	6.111	62	708	0.42	ug/l #	73
49) 1,4-Dioxane	7.717	88	1102	48.45	ug/l #	61
51) 4-Methyl-2-Pentanone	8.617	43	1644	1.10	ug/l	89
52) Toluene	8.764	92	57111	23.90	ug/l	99
55) 1,1,2-Trichloroethane	9.059	97	933	0.95	ug/l #	19
58) 2-Chloroethyl Vinyl ether	8.264	63	181	0.24	ug/l #	45
59) 2-Hexanone	9.470	43	558	0.50	ug/l	84
67) Ethyl Benzene	10.235	91	4294	0.85	ug/l	94
68) m/p-Xylenes	10.335	106	7435	4.11	ug/l	91
69) o-Xylene	10.682	106	3652	2.08	ug/l	88
70) Styrene	10.694	104	3622	1.22	ug/l #	77
76) 1,2,3-Trichloropropane	11.118	75	38834	26.54	ug/l #	39
80) 1,3,5-Trimethylbenzene	11.494	105	1003	0.26	ug/l	98
81) trans-1,4-Dichloro-2-b...	11.118	75	38834	75.34	ug/l #	12
84) 1,2,4-Trimethylbenzene	11.788	105	3205	0.83	ug/l	86
92) 1,2-Dibromo-3-Chloropr...	12.841	75	117	0.32	ug/l #	1
95) Naphthalene	13.818	128	29681	8.09	ug/l	100
-----						

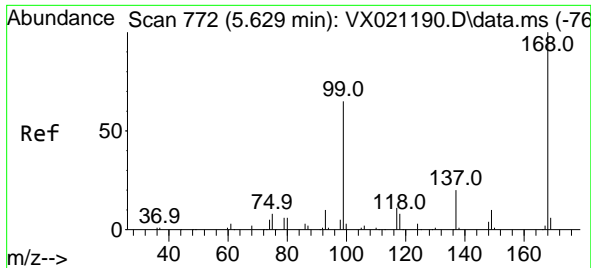
(#) = qualifier out of range (m) = manual integration (+) = signals summed

Data Path : Z:\voasrv\HPCHEM1\MSVOA\_X\Data\VX031521\  
 Data File : VX021209.D  
 Acq On : 15 Mar 2021 18:54  
 Operator : JC/MD  
 Sample : M1647-18  
 Misc : 5.0mL/MSVOA\_X/WATER  
 ALS Vial : 24 Sample Multiplier: 1

Instrument :  
 MSVOA\_X  
 Client Sampled :  
 COMP1-41730:31

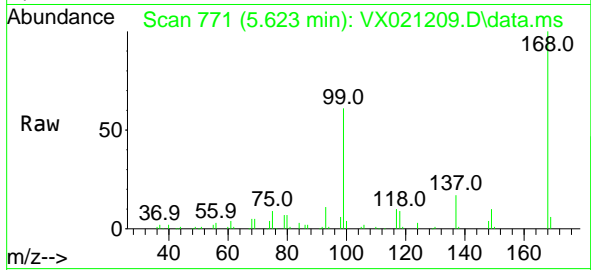
Quant Time: Mar 16 03:04:54 2021  
 Quant Method : Z:\voasrv\HPCHEM1\MSVOA\_X\Method\82X031521W.M  
 Quant Title : SW846 8260  
 QLast Update : Mon Mar 15 11:55:59 2021  
 Response via : Initial Calibration



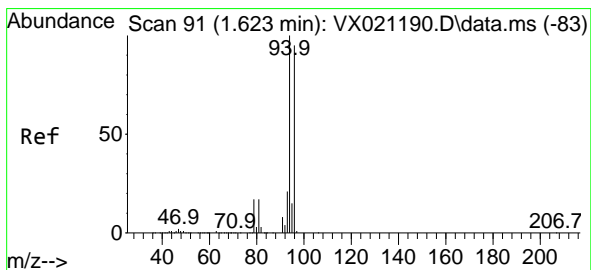
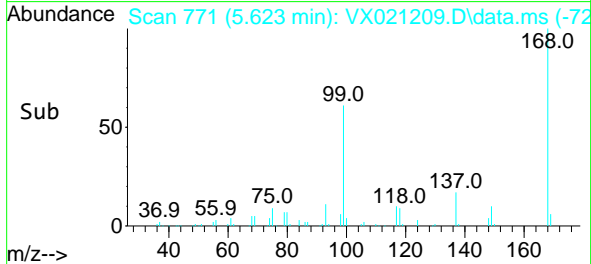
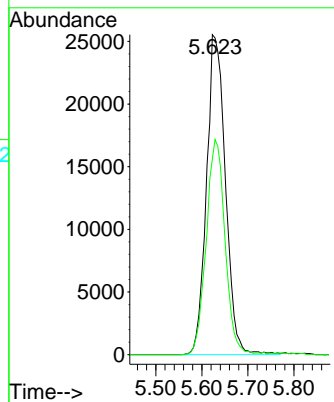


#1  
 Pentafluorobenzene  
 Concen: 50.00 ug/l  
 RT: 5.623 min Scan# 771  
 Delta R.T. -0.000 min  
 Lab File: VX021209.D  
 Acq: 15 Mar 2021 18:54

Instrument :  
 MSVOA\_X  
 ClientSampled :  
 COMP1-41730:31

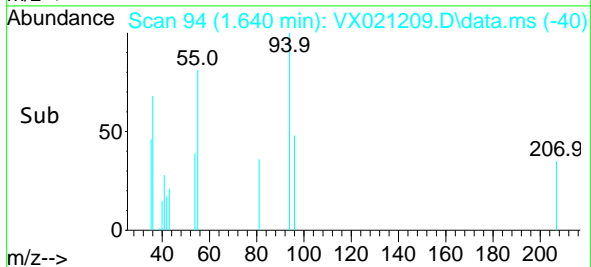
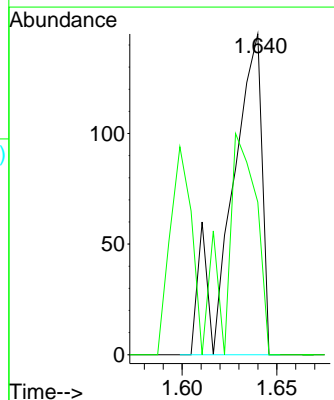
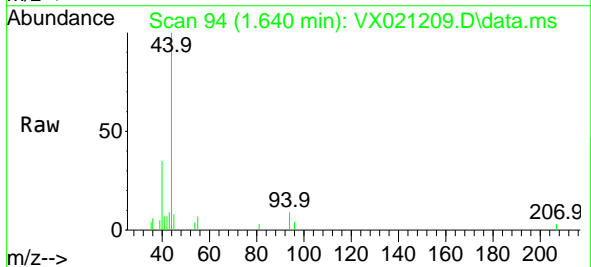


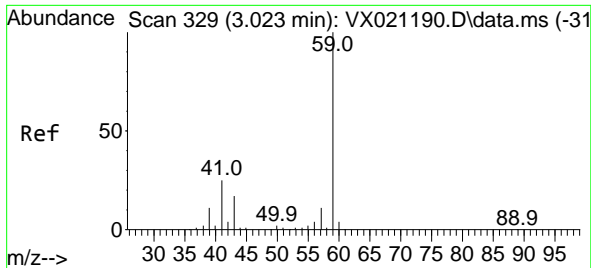
Tgt Ion:168 Resp: 73162  
 Ion Ratio Lower Upper  
 168 100  
 99 61.2 45.8 68.6



#5  
 Bromomethane  
 Concen: 0.30 ug/l  
 RT: 1.640 min Scan# 94  
 Delta R.T. 0.017 min  
 Lab File: VX021209.D  
 Acq: 15 Mar 2021 18:54

Tgt Ion: 94 Resp: 164  
 Ion Ratio Lower Upper  
 94 100  
 96 47.6 76.4 114.6#

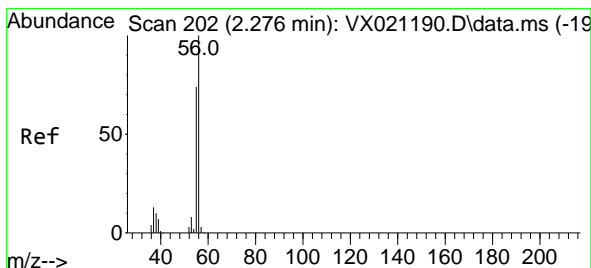
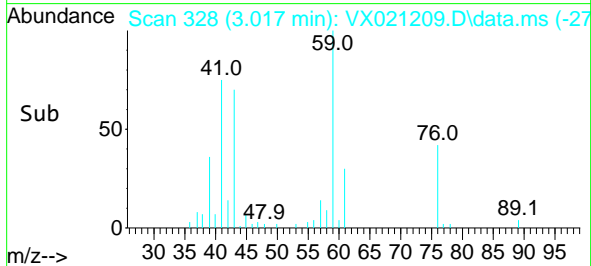
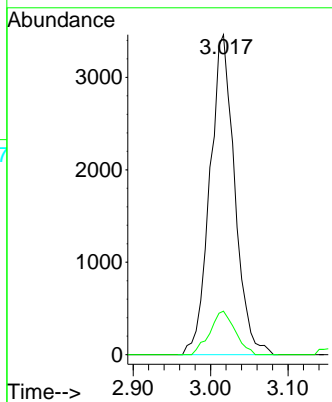
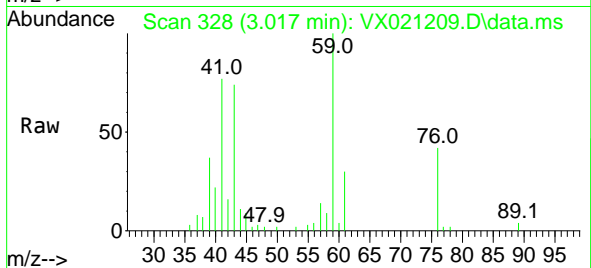




#11  
 Tert butyl alcohol  
 Concen: 35.44 ug/l  
 RT: 3.017 min Scan# 328  
 Delta R.T. -0.000 min  
 Lab File: VX021209.D  
 Acq: 15 Mar 2021 18:54

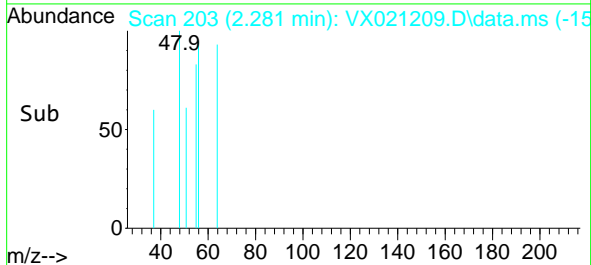
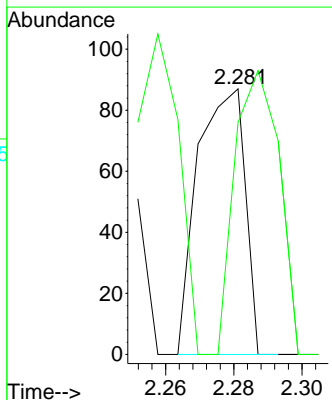
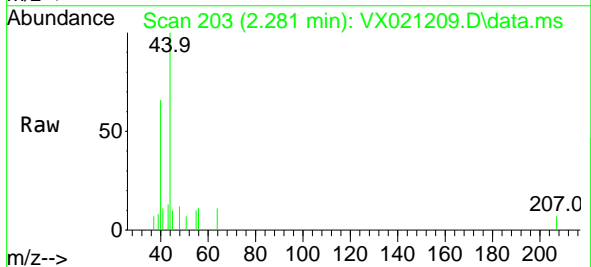
Instrument :  
 MSVOA\_X  
 ClientSampled :  
 COMP1-41730:31

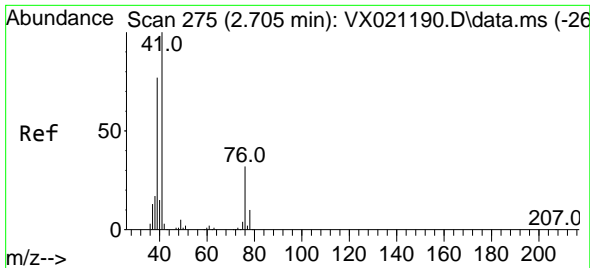
Tgt Ion: 59 Resp: 7702  
 Ion Ratio Lower Upper  
 59 100  
 57 13.8 7.8 11.8#



#13  
 Acrolein  
 Concen: 0.63 ug/l  
 RT: 2.281 min Scan# 203  
 Delta R.T. 0.006 min  
 Lab File: VX021209.D  
 Acq: 15 Mar 2021 18:54

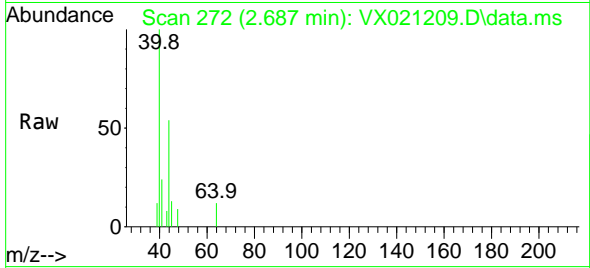
Tgt Ion: 56 Resp: 84  
 Ion Ratio Lower Upper  
 56 100  
 55 100.0 56.4 84.6#



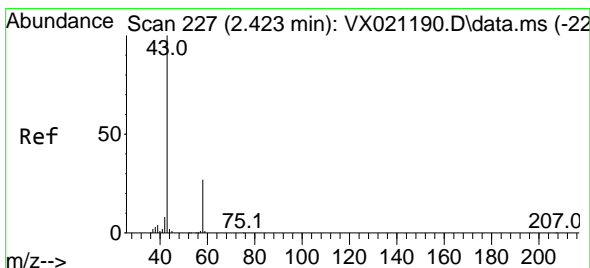
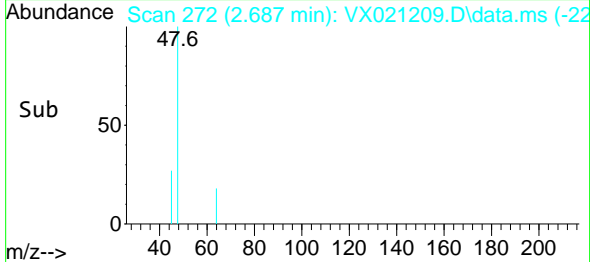
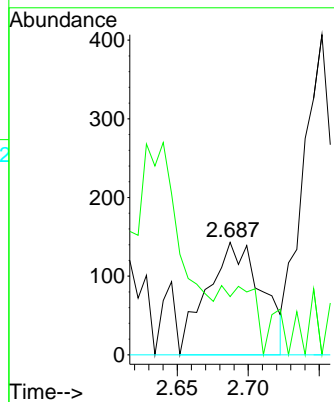


#14  
 Allyl chloride  
 Concen: 0.22 ug/l  
 RT: 2.687 min Scan# 272  
 Delta R.T. -0.018 min  
 Lab File: VX021209.D  
 Acq: 15 Mar 2021 18:54

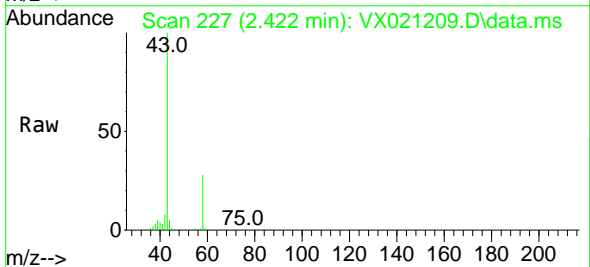
Instrument :  
 MSVOA\_X  
 ClientSampleId :  
 COMP1-41730:31



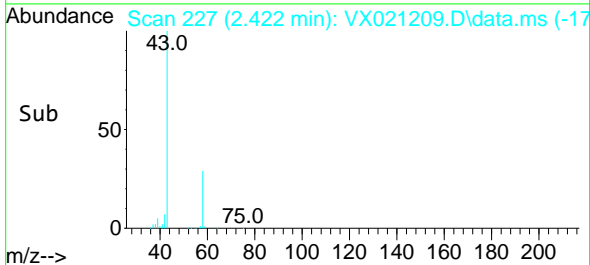
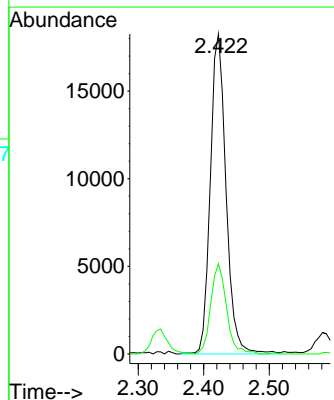
Tgt Ion	Resp	Lower	Upper
41	100		
39	0.0	51.6	77.4#
76	0.0	30.5	45.7#

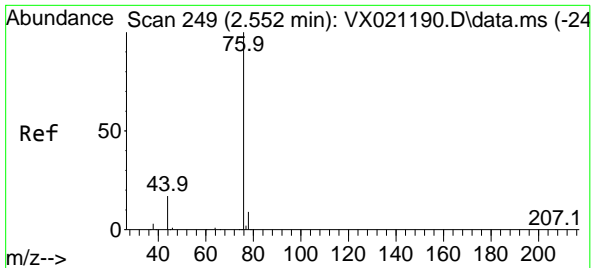


#16  
 Acetone  
 Concen: 60.80 ug/l  
 RT: 2.422 min Scan# 227  
 Delta R.T. -0.000 min  
 Lab File: VX021209.D  
 Acq: 15 Mar 2021 18:54



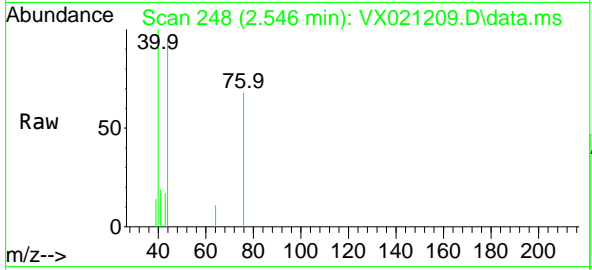
Tgt Ion	Resp	Lower	Upper
43	100		
58	28.2	27.8	41.8



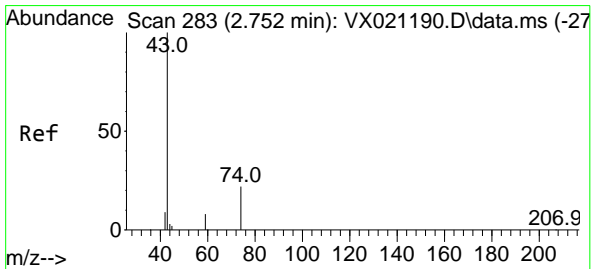
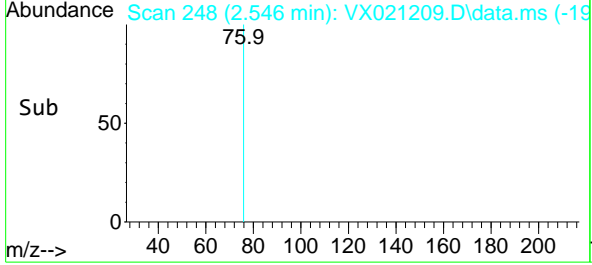
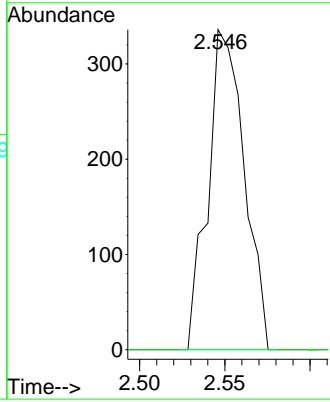


#17  
 Carbon Disulfide  
 Concen: 0.21 ug/l  
 RT: 2.546 min Scan# 248  
 Delta R.T. -0.000 min  
 Lab File: VX021209.D  
 Acq: 15 Mar 2021 18:54

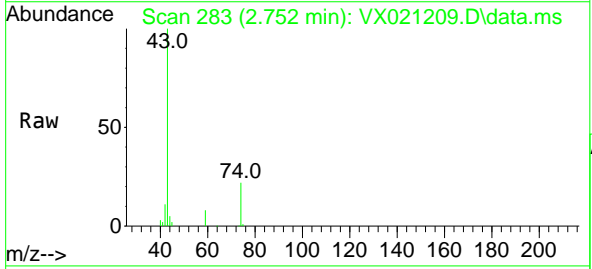
**Instrument :**  
 MSVOA\_X  
**ClientSampled :**  
 COMP1-41730:31



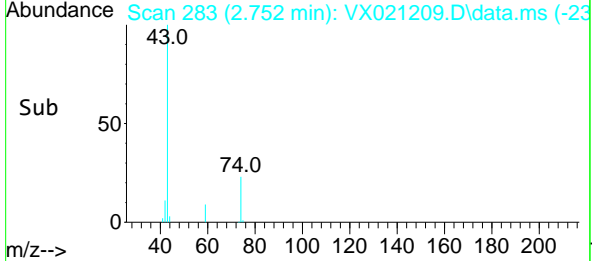
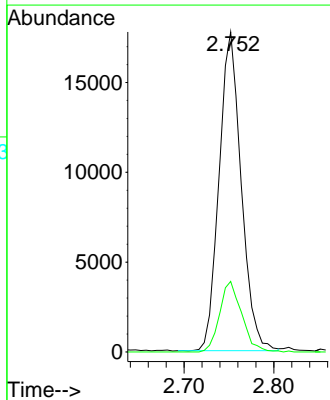
Tgt Ion: 76 Resp: 499  
 Ion Ratio Lower Upper  
 76 100  
 78 0.0 7.2 10.8#

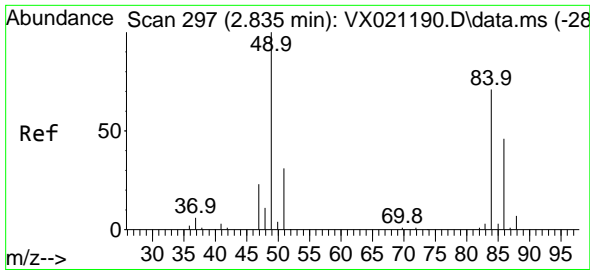


#18  
 Methyl Acetate  
 Concen: 25.03 ug/l  
 RT: 2.752 min Scan# 283  
 Delta R.T. -0.000 min  
 Lab File: VX021209.D  
 Acq: 15 Mar 2021 18:54



Tgt Ion: 43 Resp: 30397  
 Ion Ratio Lower Upper  
 43 100  
 74 22.2 21.9 32.9



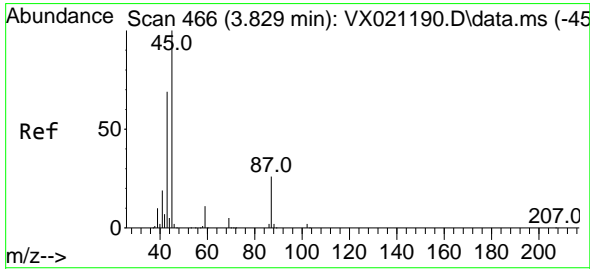
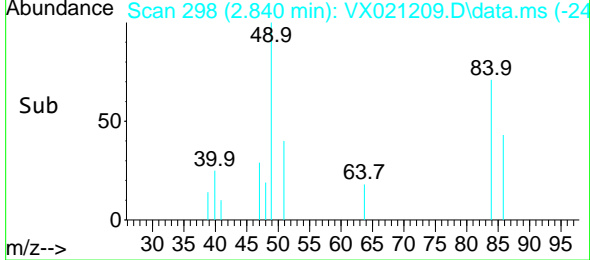
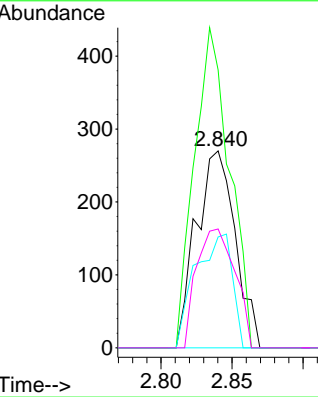
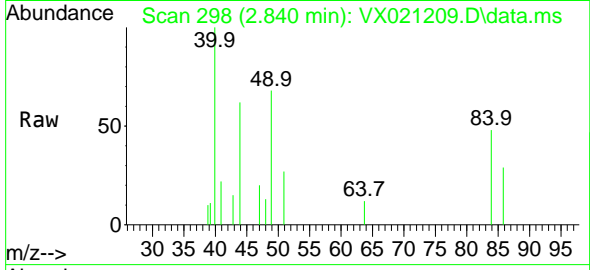


#20  
 Methylene Chloride  
 Concen: 0.54 ug/l  
 RT: 2.840 min Scan# 298  
 Delta R.T. 0.006 min  
 Lab File: VX021209.D  
 Acq: 15 Mar 2021 18:54

Instrument :  
 MSVOA\_X  
 ClientSampled :  
 COMP1-41730:31

Tgt Ion: 84 Resp: 515

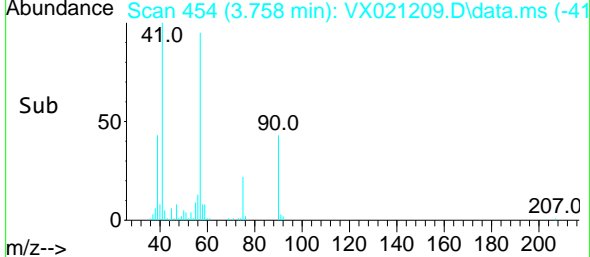
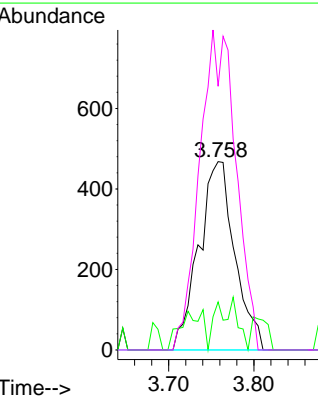
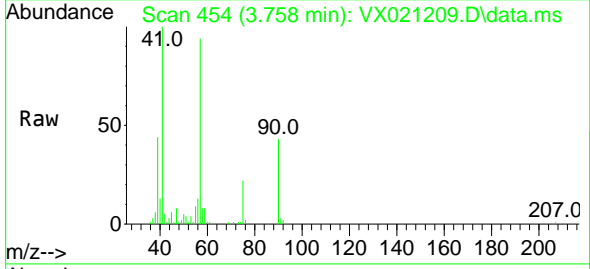
Ion	Ratio	Lower	Upper
84	100		
49	141.1	88.6	132.8#
51	56.3	27.0	40.6#
86	60.4	50.3	75.5

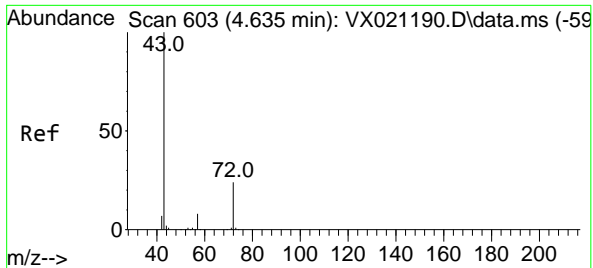


#22  
 Diisopropyl ether  
 Concen: 0.44 ug/l  
 RT: 3.758 min Scan# 454  
 Delta R.T. -0.071 min  
 Lab File: VX021209.D  
 Acq: 15 Mar 2021 18:54

Tgt Ion: 45 Resp: 1370

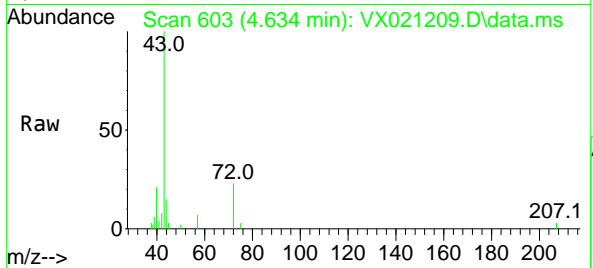
Ion	Ratio	Lower	Upper
45	100		
43	25.4	58.0	87.0#
87	0.0	25.4	38.0#
59	140.0	10.2	15.2#



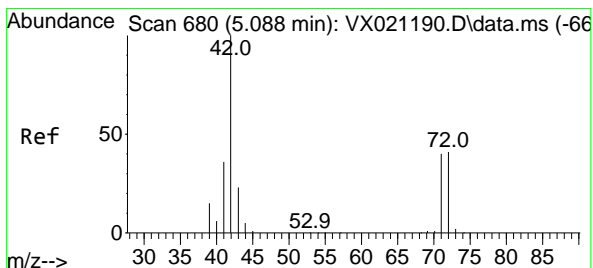
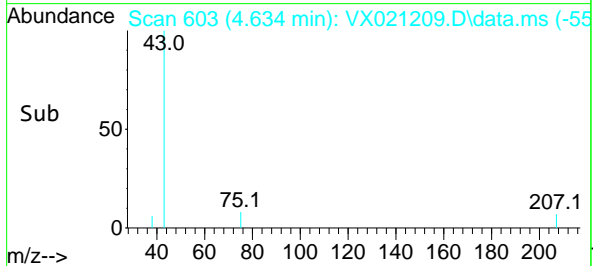
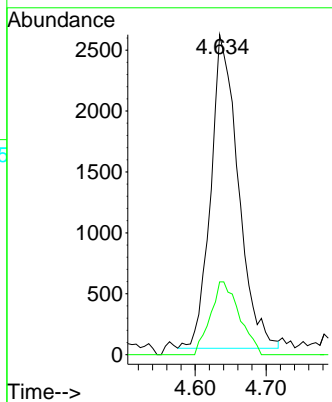


#25  
 2-Butanone  
 Concen: 9.61 ug/l  
 RT: 4.634 min Scan# 603  
 Delta R.T. -0.000 min  
 Lab File: VX021209.D  
 Acq: 15 Mar 2021 18:54

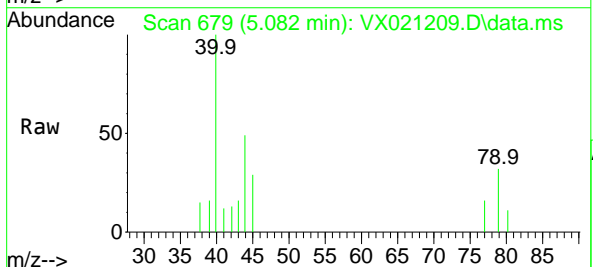
Instrument : MSVOA\_X  
 ClientSampled : COMP1-41730:31



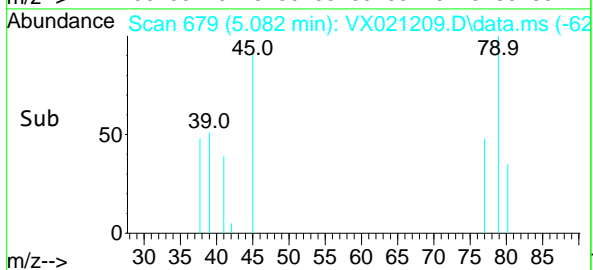
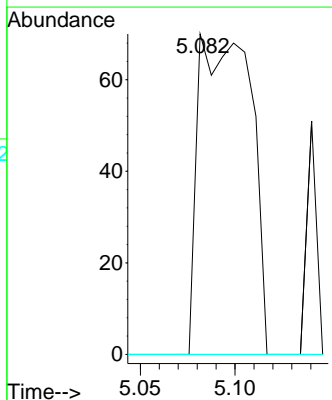
Tgt Ion: 43 Resp: 6933  
 Ion Ratio Lower Upper  
 43 100  
 72 23.2 23.7 35.5#



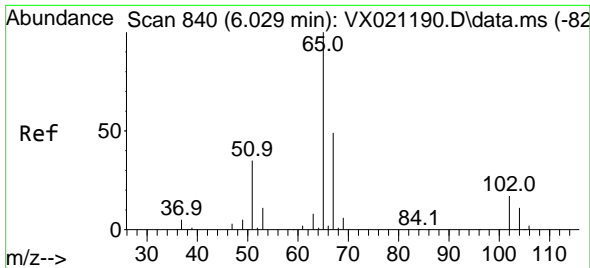
#29  
 Tetrahydrofuran  
 Concen: 0.29 ug/l  
 RT: 5.082 min Scan# 679  
 Delta R.T. -0.006 min  
 Lab File: VX021209.D  
 Acq: 15 Mar 2021 18:54



Tgt Ion: 42 Resp: 135  
 Ion Ratio Lower Upper  
 42 100  
 72 0.0 41.7 62.5#  
 71 0.0 38.4 57.6#



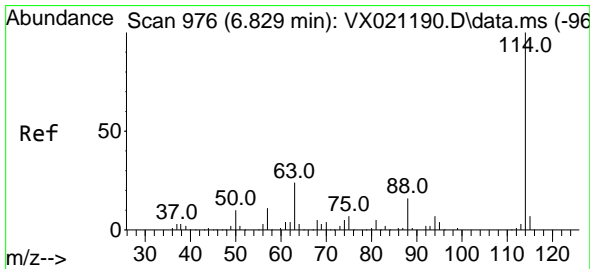
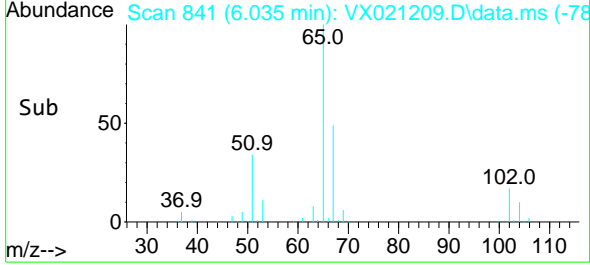
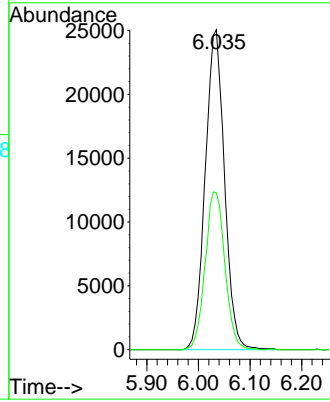
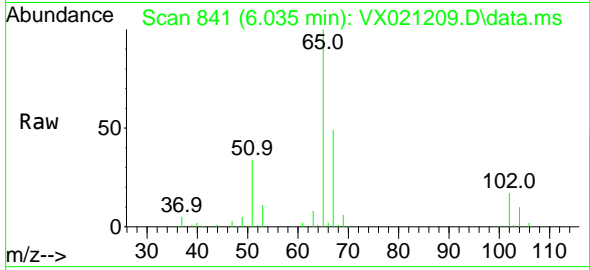




#33  
 1,2-Dichloroethane-d4  
 Concen: 52.04 ug/l  
 RT: 6.035 min Scan# 841  
 Delta R.T. 0.006 min  
 Lab File: VX021209.D  
 Acq: 15 Mar 2021 18:54

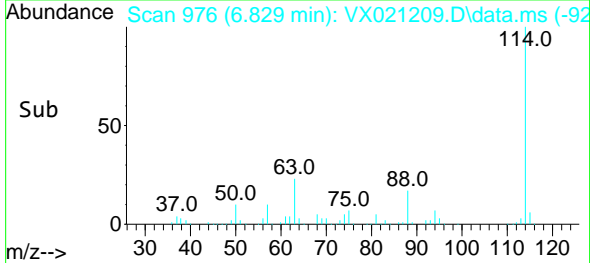
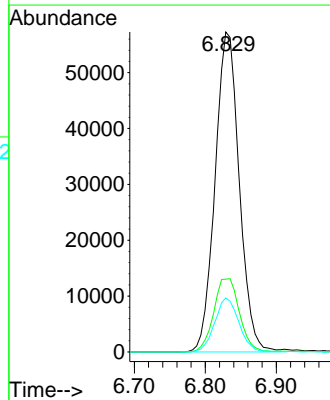
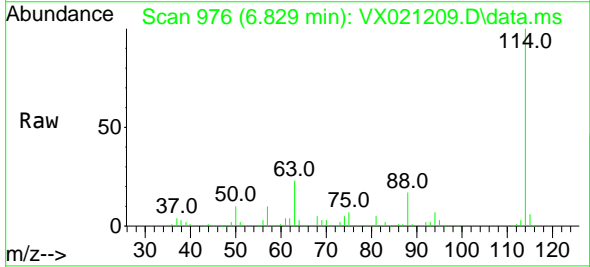
Instrument :  
 MSVOA\_X  
 ClientSampleId :  
 COMP1-41730:31

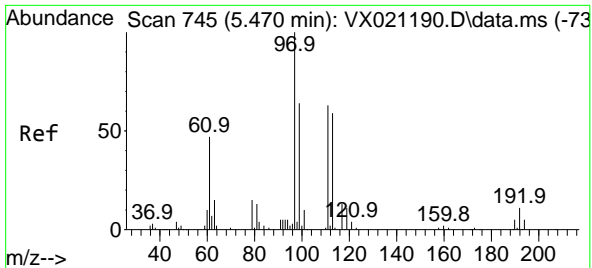
Tgt Ion: 65 Resp: 64924  
 Ion Ratio Lower Upper  
 65 100  
 67 50.5 0.0 105.4



#34  
 1,4-Difluorobenzene  
 Concen: 50.00 ug/l  
 RT: 6.829 min Scan# 976  
 Delta R.T. -0.000 min  
 Lab File: VX021209.D  
 Acq: 15 Mar 2021 18:54

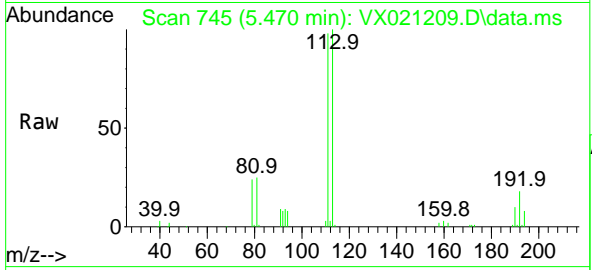
Tgt Ion:114 Resp: 135286  
 Ion Ratio Lower Upper  
 114 100  
 63 22.7 0.0 40.8  
 88 16.9 0.0 32.8



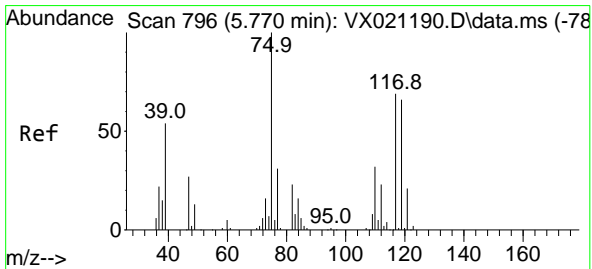
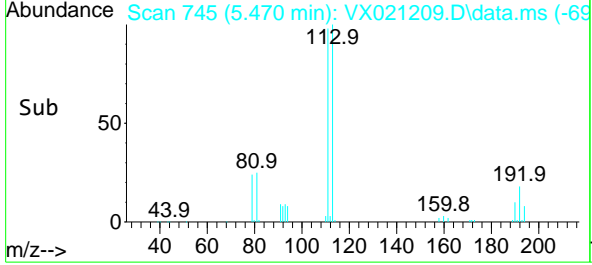
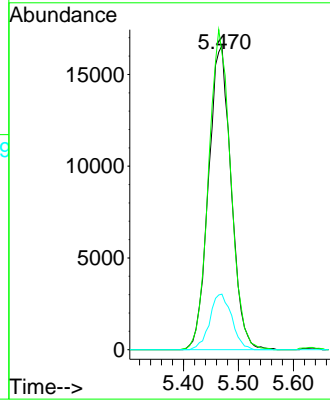


#35  
 Dibromofluoromethane  
 Concen: 50.84 ug/l  
 RT: 5.470 min Scan# 745  
 Delta R.T. 0.006 min  
 Lab File: VX021209.D  
 Acq: 15 Mar 2021 18:54

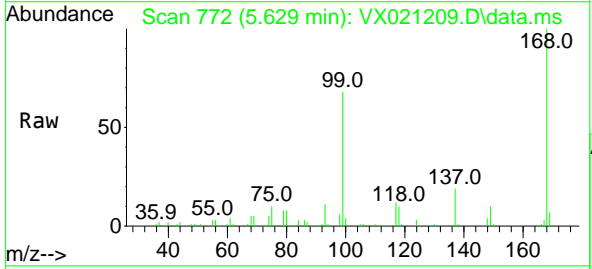
Instrument :  
 MSVOA\_X  
 ClientSampleId :  
 COMP1-41730:31



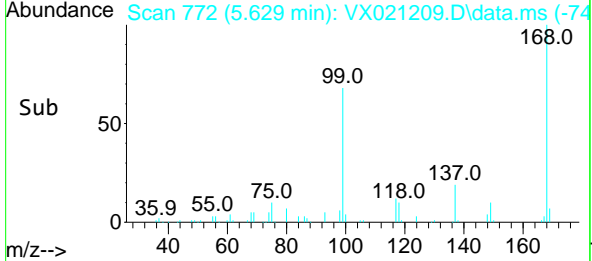
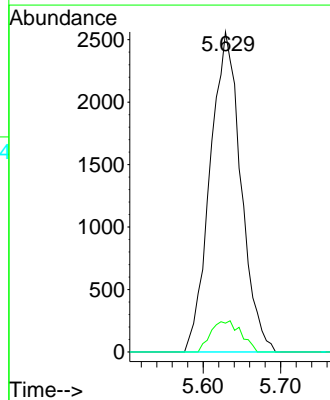
Tgt Ion:113 Resp: 47325  
 Ion Ratio Lower Upper  
 113 100  
 111 102.9 81.9 122.9  
 192 17.8 16.7 25.1

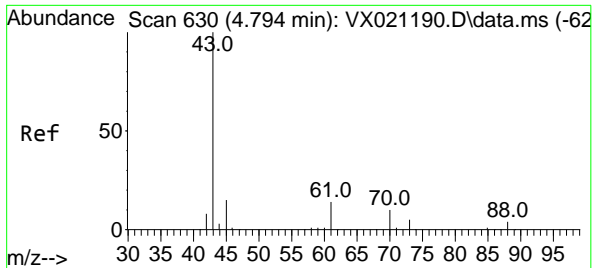


#36  
 1,1-Dichloropropene  
 Concen: 5.00 ug/l  
 RT: 5.629 min Scan# 772  
 Delta R.T. -0.141 min  
 Lab File: VX021209.D  
 Acq: 15 Mar 2021 18:54



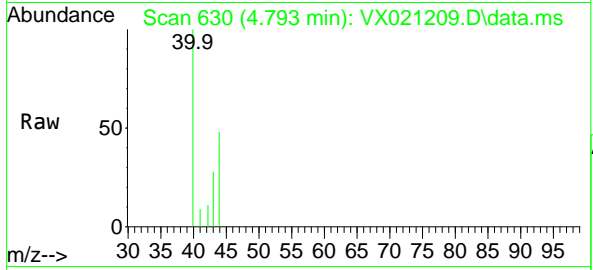
Tgt Ion: 75 Resp: 7093  
 Ion Ratio Lower Upper  
 75 100  
 110 9.5 18.1 54.4#  
 77 0.0 25.3 37.9#



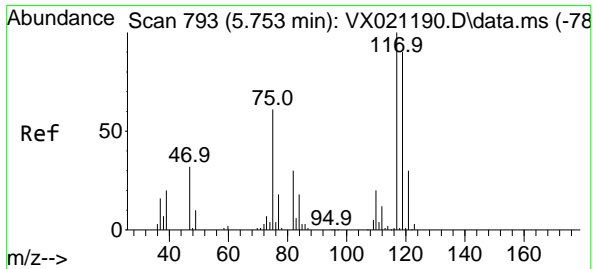
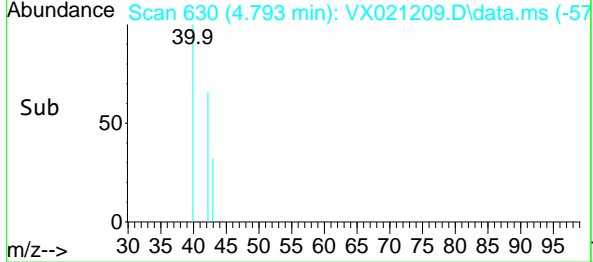
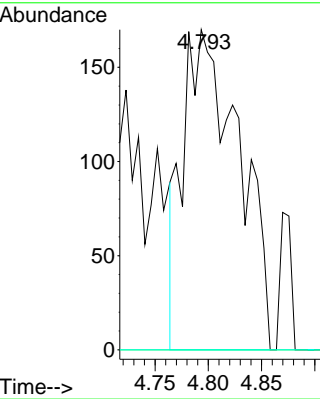


#37  
 Ethyl Acetate  
 Concen: 0.40 ug/l  
 RT: 4.793 min Scan# 630  
 Delta R.T. -0.000 min  
 Lab File: VX021209.D  
 Acq: 15 Mar 2021 18:54

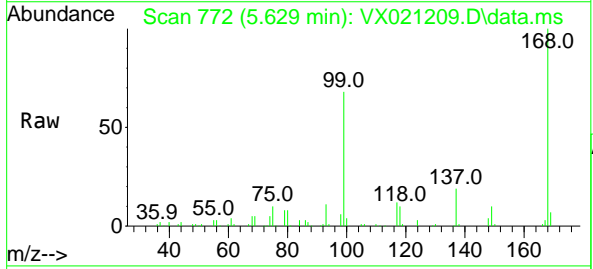
Instrument :  
 MSVOA\_X  
 ClientSampleId :  
 COMP1-41730:31



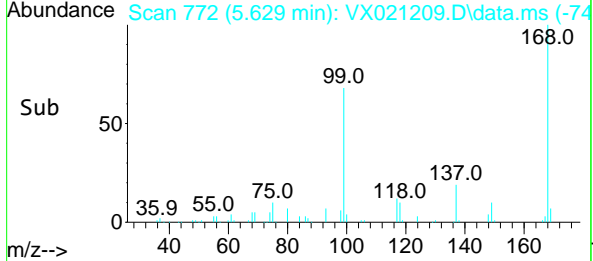
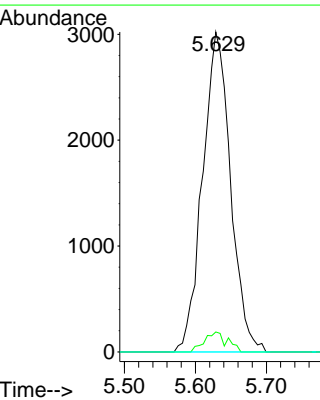
Tgt Ion	Ratio	Lower	Upper
43	100		
61	0.0	12.8	19.2#
70	0.0	10.5	15.7#

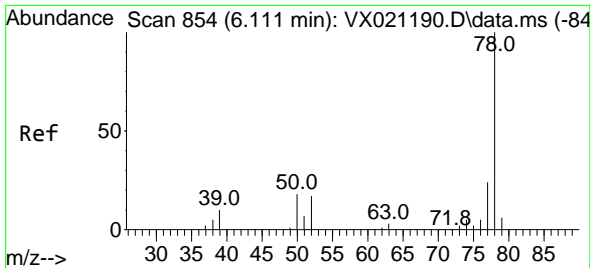


#38  
 Carbon Tetrachloride  
 Concen: 5.30 ug/l  
 RT: 5.629 min Scan# 772  
 Delta R.T. -0.124 min  
 Lab File: VX021209.D  
 Acq: 15 Mar 2021 18:54



Tgt Ion	Ratio	Lower	Upper
117	100		
119	6.3	76.2	114.2#
121	0.0	24.8	37.2#

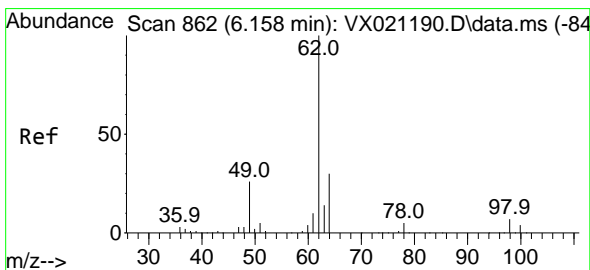
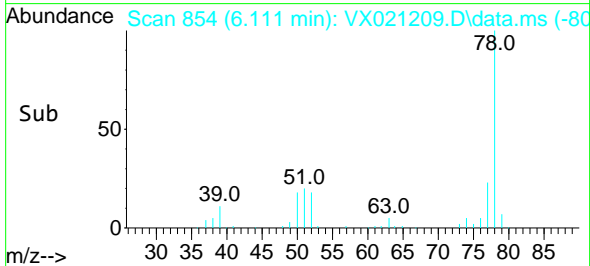
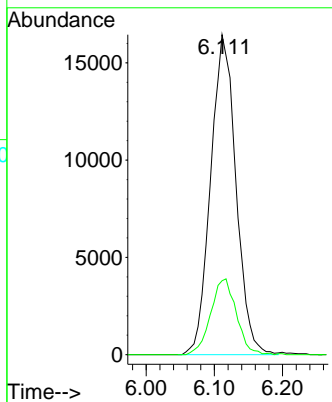
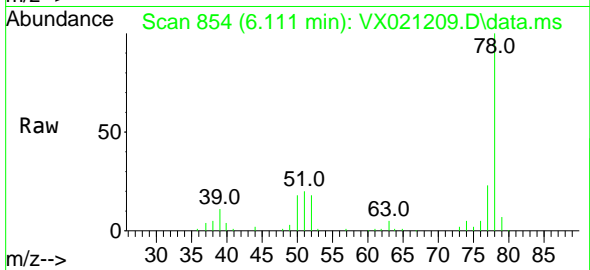




#40  
Benzene  
Concen: 10.75 ug/l  
RT: 6.111 min Scan# 854  
Delta R.T. -0.000 min  
Lab File: VX021209.D  
Acq: 15 Mar 2021 18:54

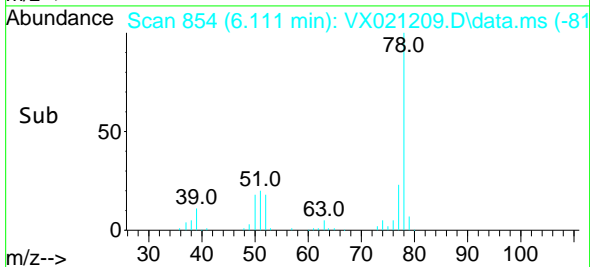
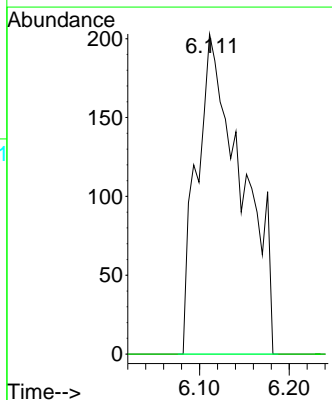
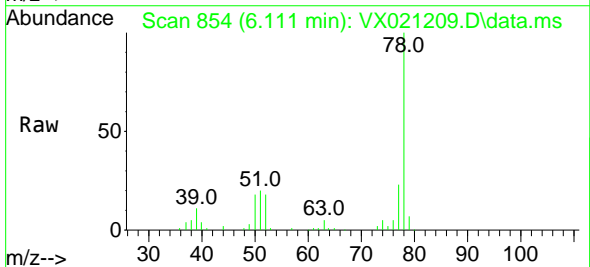
Instrument :  
MSVOA\_X  
ClientSampleId :  
COMP1-41730:31

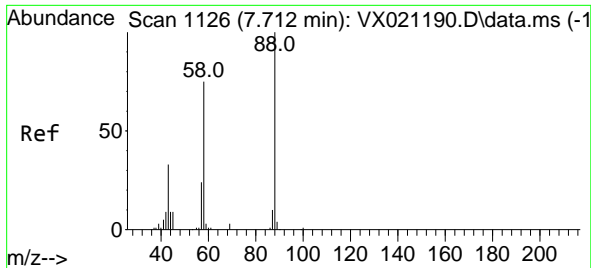
Tgt Ion: 78 Resp: 42590  
Ion Ratio Lower Upper  
78 100  
77 23.1 18.9 28.3



#42  
1,2-Dichloroethane  
Concen: 0.42 ug/l  
RT: 6.111 min Scan# 854  
Delta R.T. -0.047 min  
Lab File: VX021209.D  
Acq: 15 Mar 2021 18:54

Tgt Ion: 62 Resp: 708  
Ion Ratio Lower Upper  
62 100  
98 0.0 0.0 20.2

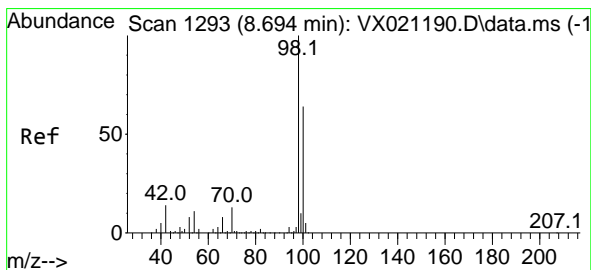
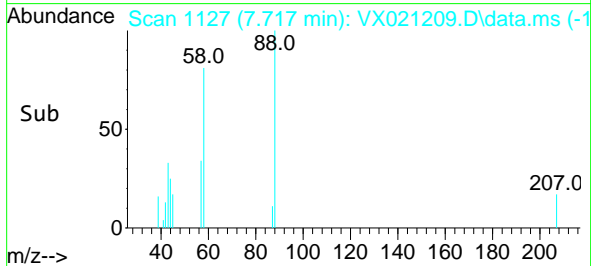
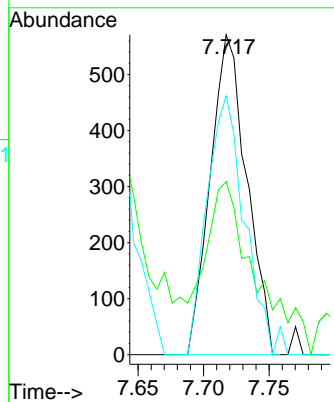
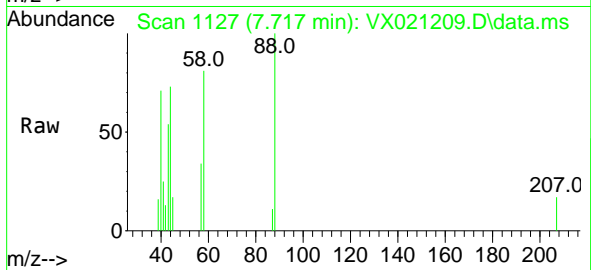




#49  
 1,4-Dioxane  
 Concen: 48.45 ug/l  
 RT: 7.717 min Scan# 1127  
 Delta R.T. 0.006 min  
 Lab File: VX021209.D  
 Acq: 15 Mar 2021 18:54

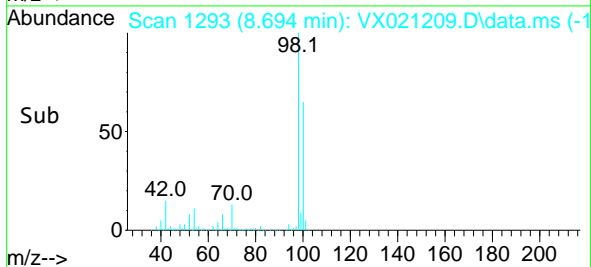
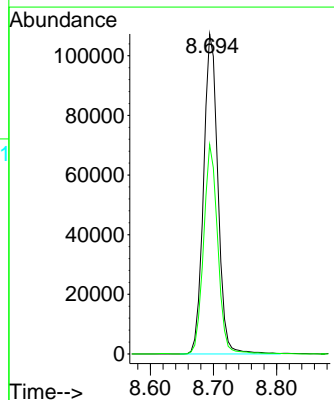
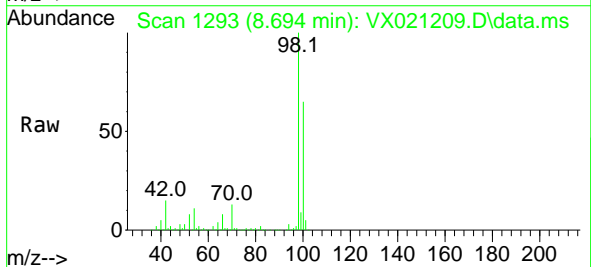
Instrument :  
 MSVOA\_X  
 ClientSampleId :  
 COMP1-41730:31

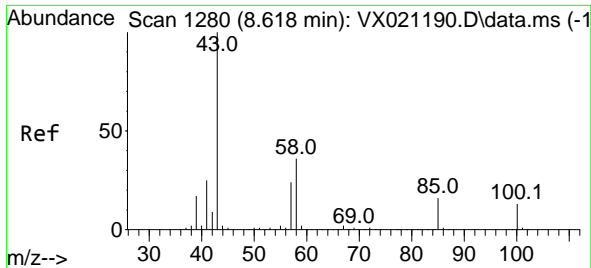
Tgt Ion	Resp	Lower	Upper
88	1102		
43	74.8	23.2	34.8#
58	83.9	55.0	82.4#



#50  
 Toluene-d8  
 Concen: 50.75 ug/l  
 RT: 8.694 min Scan# 1293  
 Delta R.T. -0.000 min  
 Lab File: VX021209.D  
 Acq: 15 Mar 2021 18:54

Tgt Ion	Resp	Lower	Upper
98	169698		
100	64.6	51.9	77.9

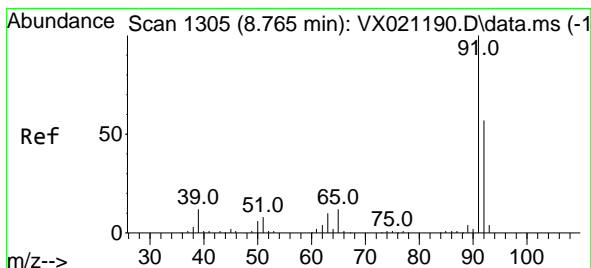
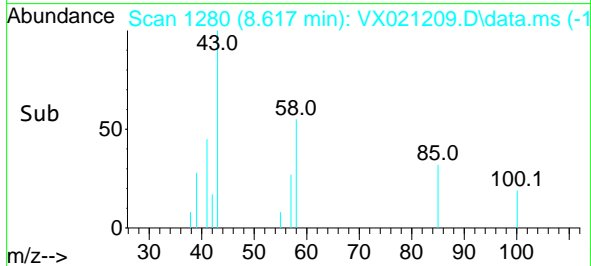
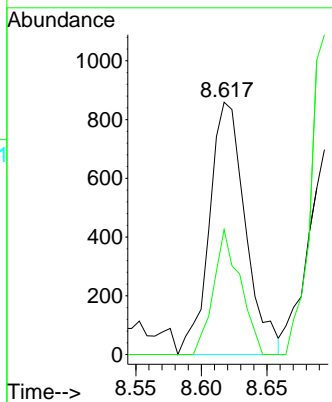
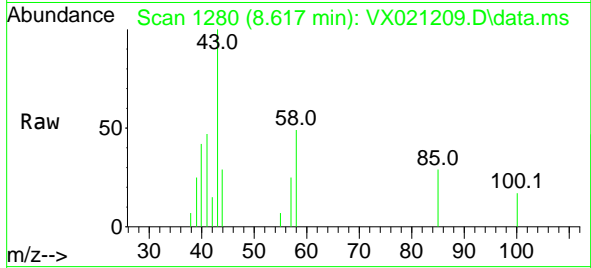




#51  
 4-Methyl-2-Pentanone  
 Concen: 1.10 ug/l  
 RT: 8.617 min Scan# 1280  
 Delta R.T. -0.000 min  
 Lab File: VX021209.D  
 Acq: 15 Mar 2021 18:54

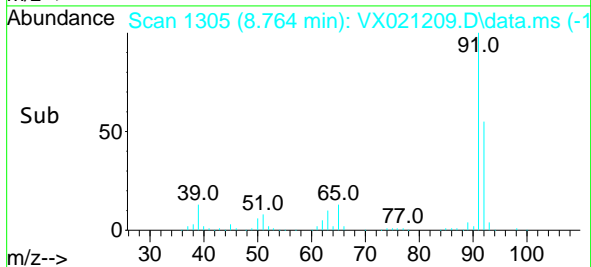
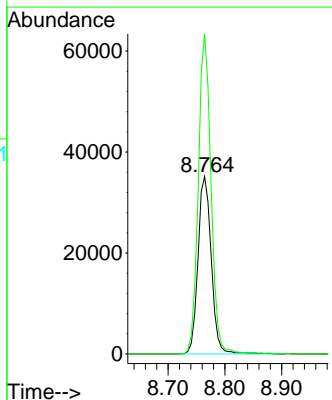
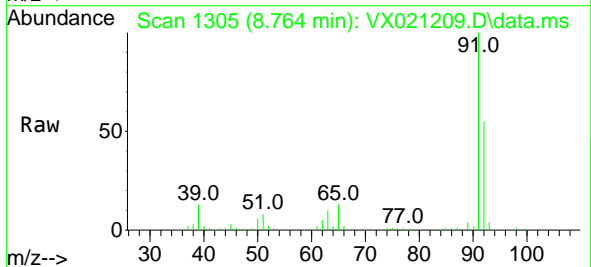
Instrument :  
 MSVOA\_X  
 ClientSampleId :  
 COMP1-41730:31

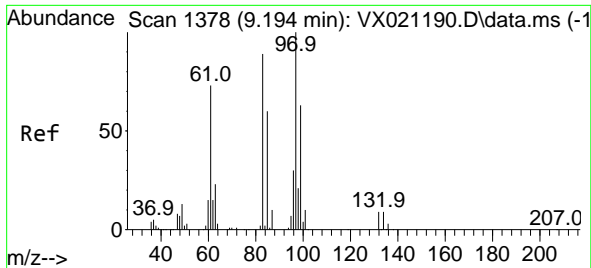
Tgt Ion: 43 Resp: 1644  
 Ion Ratio Lower Upper  
 43 100  
 58 36.9 35.4 53.0



#52  
 Toluene  
 Concen: 23.90 ug/l  
 RT: 8.764 min Scan# 1305  
 Delta R.T. -0.000 min  
 Lab File: VX021209.D  
 Acq: 15 Mar 2021 18:54

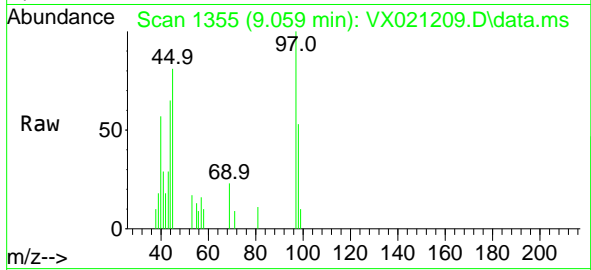
Tgt Ion: 92 Resp: 57111  
 Ion Ratio Lower Upper  
 92 100  
 91 173.2 137.1 205.7





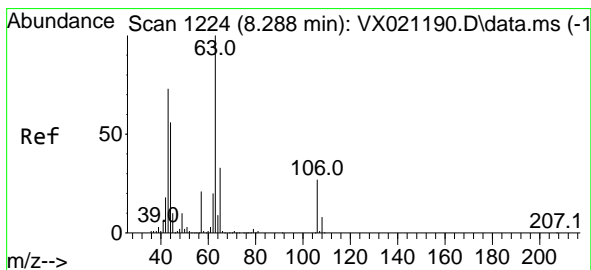
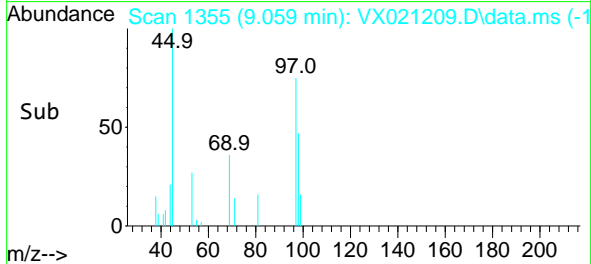
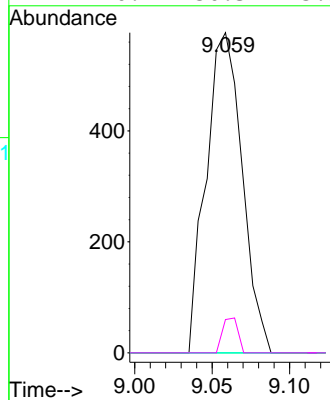
#55  
 1,1,2-Trichloroethane  
 Concen: 0.95 ug/l  
 RT: 9.059 min Scan# 1355  
 Delta R.T. -0.136 min  
 Lab File: VX021209.D  
 Acq: 15 Mar 2021 18:54

Instrument :  
 MSVOA\_X  
 ClientSampleId :  
 COMP1-41730:31

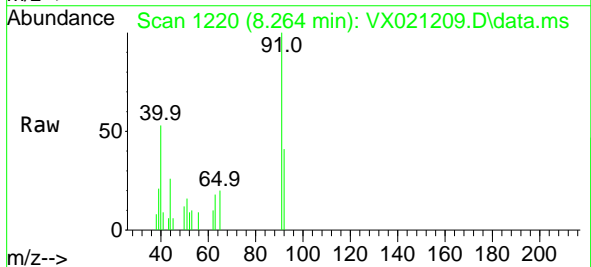


Tgt Ion: 97 Resp: 933

Ion	Ratio	Lower	Upper
97	100		
83	0.0	69.3	103.9#
85	0.0	44.3	66.5#
99	10.4	50.3	75.5#

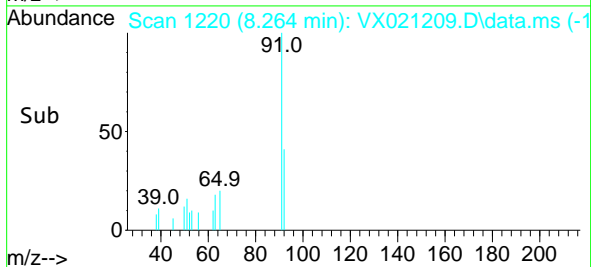
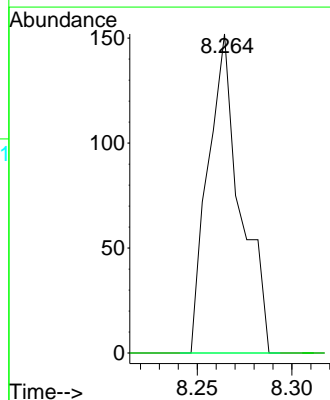


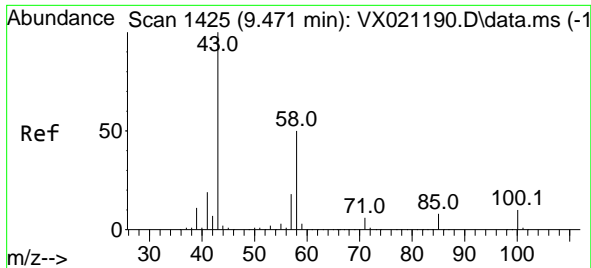
#58  
 2-Chloroethyl Vinyl ether  
 Concen: 0.24 ug/l  
 RT: 8.264 min Scan# 1220  
 Delta R.T. -0.024 min  
 Lab File: VX021209.D  
 Acq: 15 Mar 2021 18:54



Tgt Ion: 63 Resp: 181

Ion	Ratio	Lower	Upper
63	100		
106	0.0	23.5	35.3#

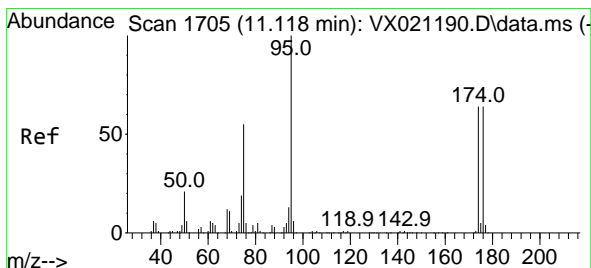
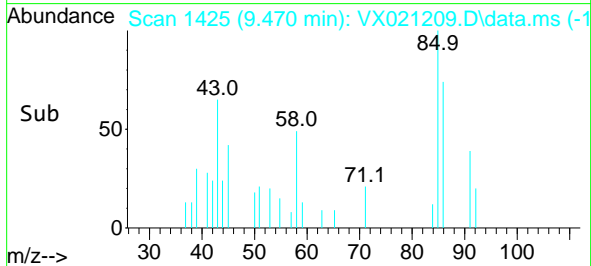
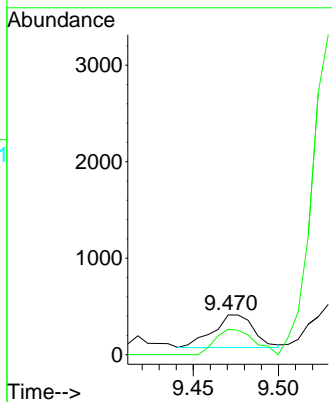
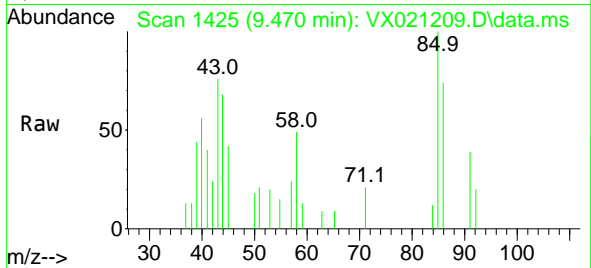




#59  
 2-Hexanone  
 Concen: 0.50 ug/l  
 RT: 9.470 min Scan# 1425  
 Delta R.T. -0.000 min  
 Lab File: VX021209.D  
 Acq: 15 Mar 2021 18:54

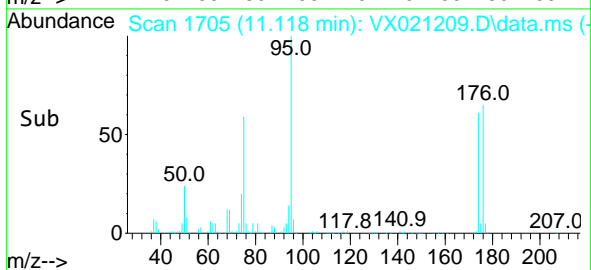
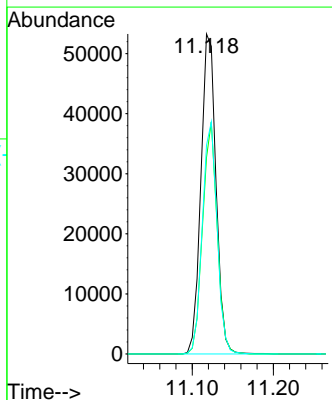
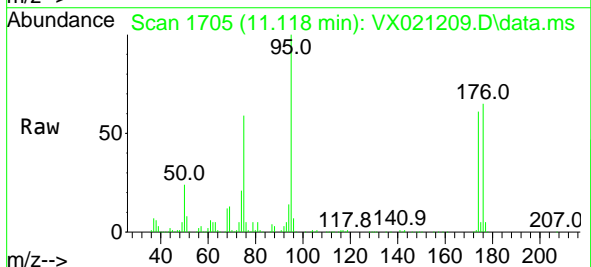
Instrument :  
 MSVOA\_X  
 ClientSampled :  
 COMP1-41730:31

Tgt Ion: 43 Resp: 558  
 Ion Ratio Lower Upper  
 43 100  
 58 74.2 30.9 92.8

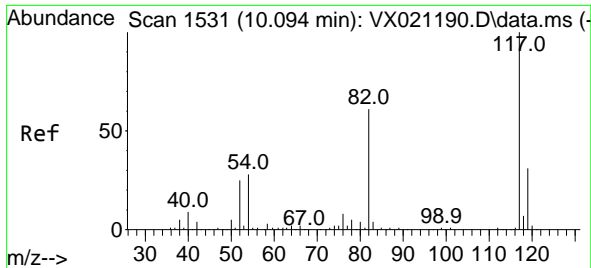


#62  
 4-Bromofluorobenzene  
 Concen: 54.07 ug/l  
 RT: 11.118 min Scan# 1705  
 Delta R.T. -0.000 min  
 Lab File: VX021209.D  
 Acq: 15 Mar 2021 18:54

Tgt Ion: 95 Resp: 68899  
 Ion Ratio Lower Upper  
 95 100  
 174 69.3 0.0 154.6  
 176 70.5 0.0 155.8





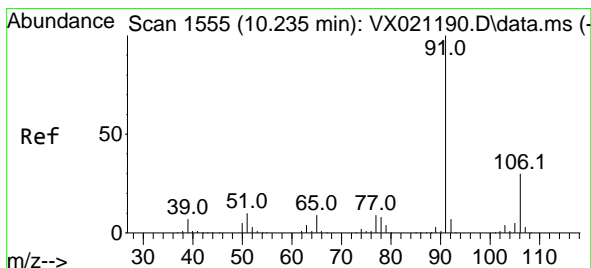
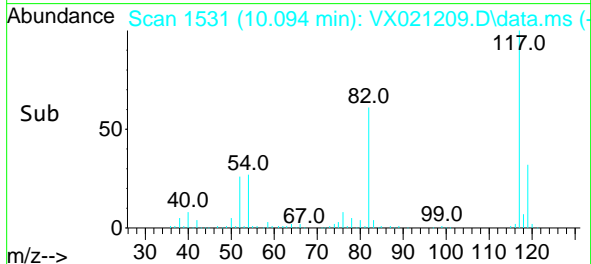
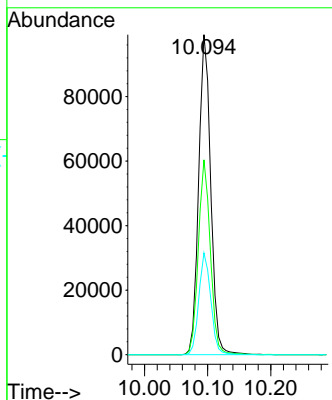
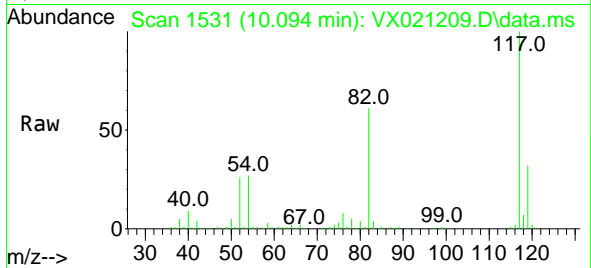


#63  
 Chlorobenzene-d5  
 Concen: 50.00 ug/l  
 RT: 10.094 min Scan# 1531  
 Delta R.T. -0.000 min  
 Lab File: VX021209.D  
 Acq: 15 Mar 2021 18:54

Instrument :  
 MSVOA\_X  
 ClientSampled :  
 COMP1-41730:31

Tgt Ion: 117 Resp: 131377

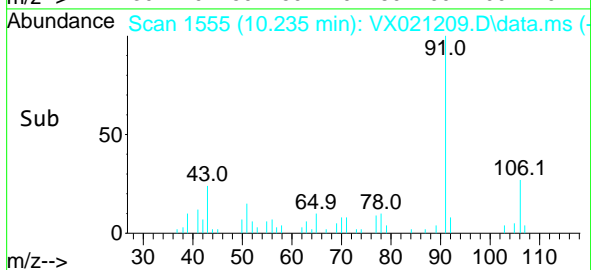
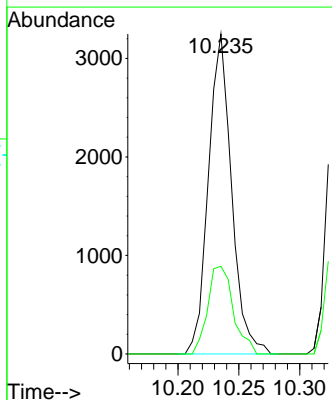
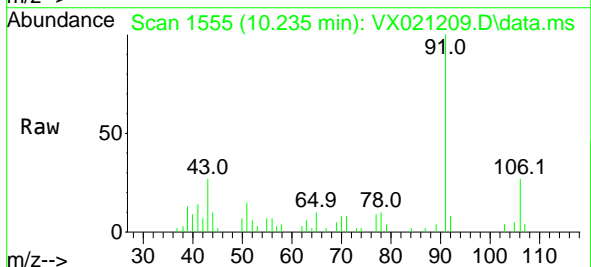
Ion	Ratio	Lower	Upper
117	100		
82	60.9	47.4	71.2
119	31.8	26.6	39.8

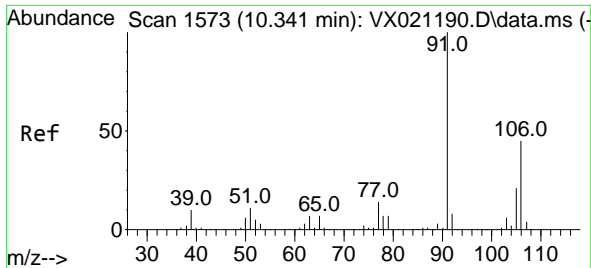


#67  
 Ethyl Benzene  
 Concen: 0.85 ug/l  
 RT: 10.235 min Scan# 1555  
 Delta R.T. 0.000 min  
 Lab File: VX021209.D  
 Acq: 15 Mar 2021 18:54

Tgt Ion: 91 Resp: 4294

Ion	Ratio	Lower	Upper
91	100		
106	27.4	24.6	37.0

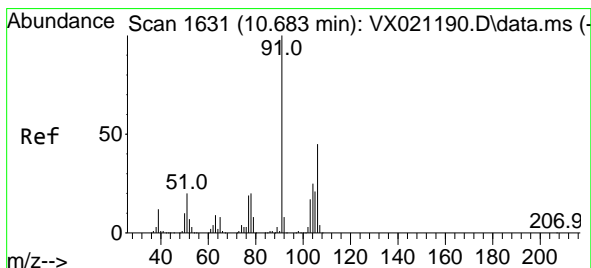
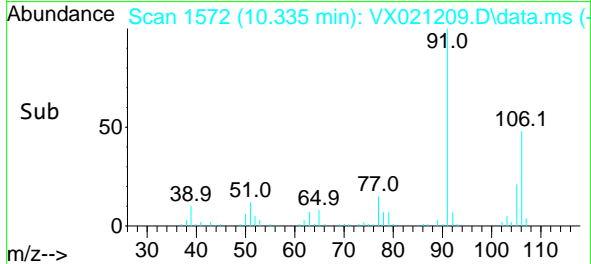
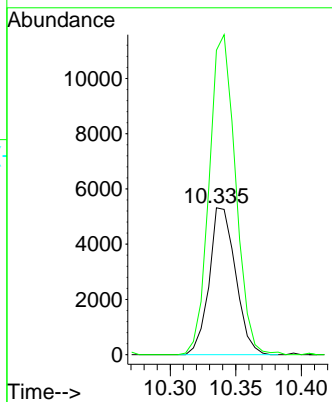
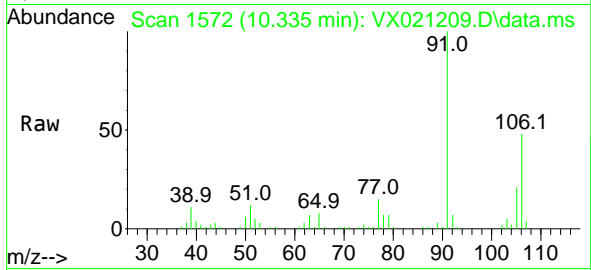




#68  
 m/p-Xylenes  
 Concen: 4.11 ug/l  
 RT: 10.335 min Scan# 1572  
 Delta R.T. -0.006 min  
 Lab File: VX021209.D  
 Acq: 15 Mar 2021 18:54

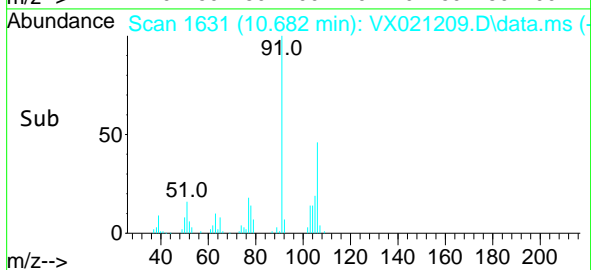
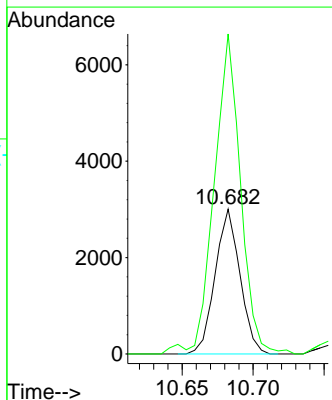
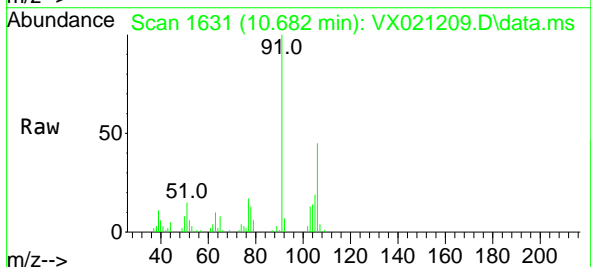
Instrument :  
 MSVOA\_X  
 ClientSampled :  
 COMP1-41730:31

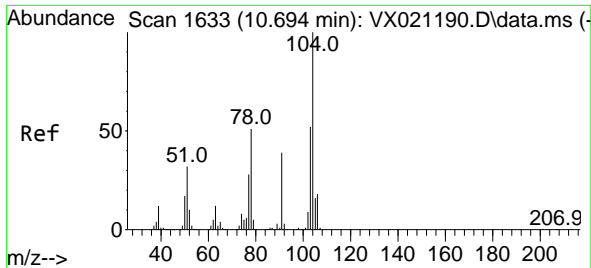
Tgt Ion:106 Resp: 7435  
 Ion Ratio Lower Upper  
 106 100  
 91 217.7 162.8 244.2



#69  
 o-Xylene  
 Concen: 2.08 ug/l  
 RT: 10.682 min Scan# 1631  
 Delta R.T. -0.001 min  
 Lab File: VX021209.D  
 Acq: 15 Mar 2021 18:54

Tgt Ion:106 Resp: 3652  
 Ion Ratio Lower Upper  
 106 100  
 91 234.9 108.1 324.2



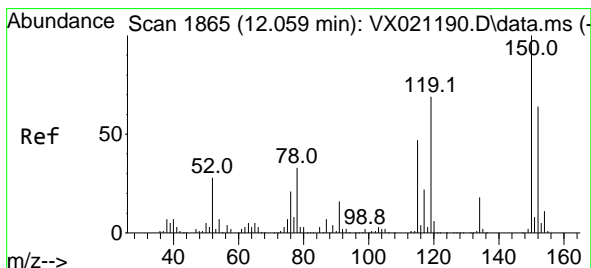
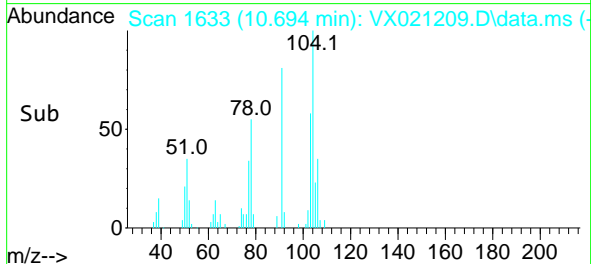
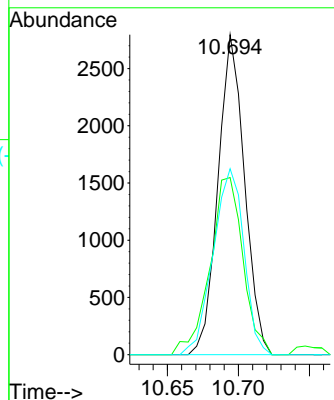
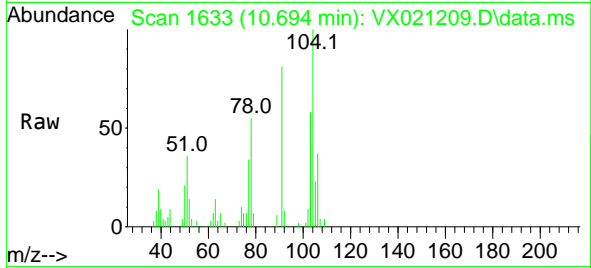


#70  
 Styrene  
 Concen: 1.22 ug/l  
 RT: 10.694 min Scan# 1633  
 Delta R.T. 0.000 min  
 Lab File: VX021209.D  
 Acq: 15 Mar 2021 18:54

Instrument :  
 MSVOA\_X  
 ClientSampleId :  
 COMP1-41730:31

Tgt Ion:104 Resp: 3622

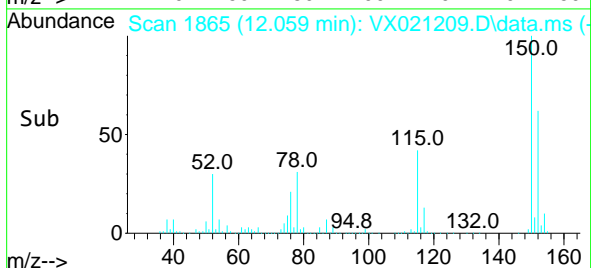
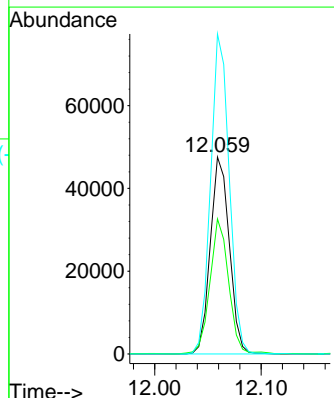
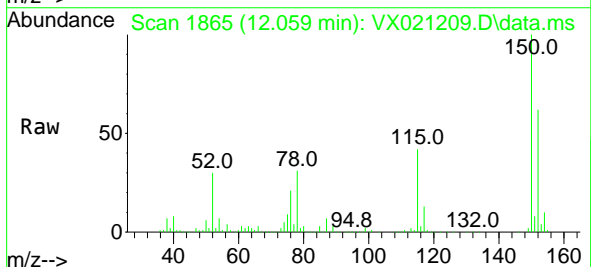
Ion	Ratio	Lower	Upper
104	100		
78	69.1	40.0	60.0#
103	67.5	43.4	65.0#

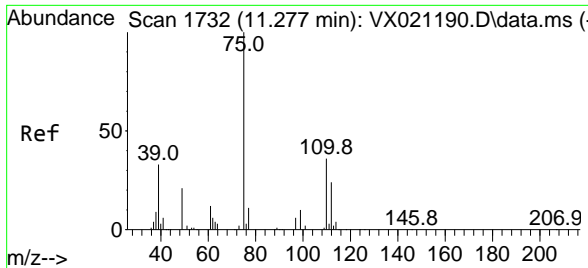


#72  
 1,4-Dichlorobenzene-d4  
 Concen: 50.00 ug/l  
 RT: 12.059 min Scan# 1865  
 Delta R.T. -0.006 min  
 Lab File: VX021209.D  
 Acq: 15 Mar 2021 18:54

Tgt Ion:152 Resp: 59003

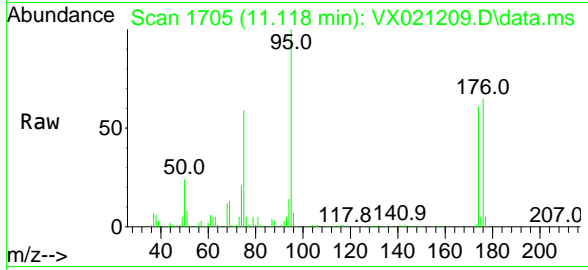
Ion	Ratio	Lower	Upper
152	100		
115	67.8	41.1	123.3
150	159.0	0.0	349.0



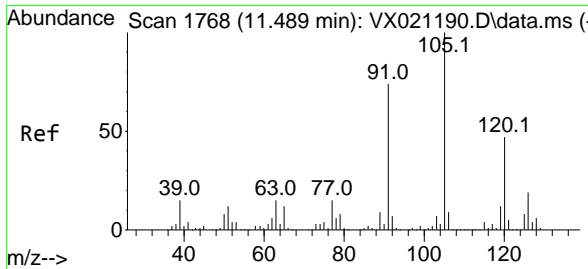
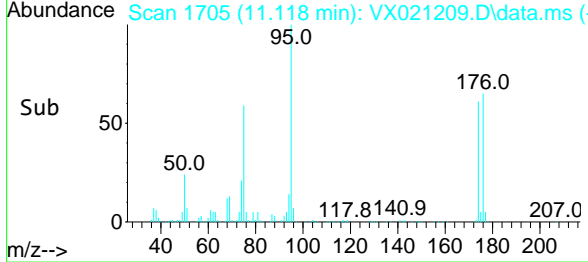
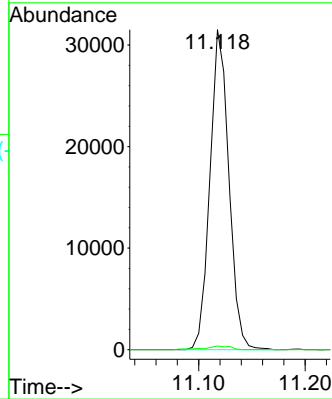


#76  
 1,2,3-Trichloropropane  
 Concen: 26.54 ug/l  
 RT: 11.118 min Scan# 1705  
 Delta R.T. -0.159 min  
 Lab File: VX021209.D  
 Acq: 15 Mar 2021 18:54

**Instrument :**  
 MSVOA\_X  
**ClientSampled :**  
 COMP1-41730:31

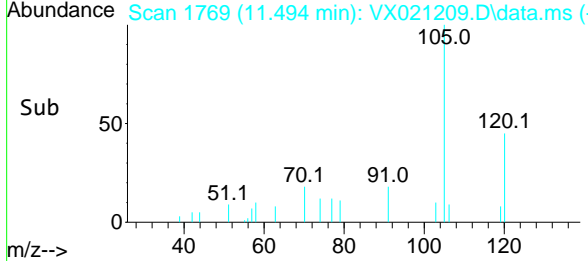
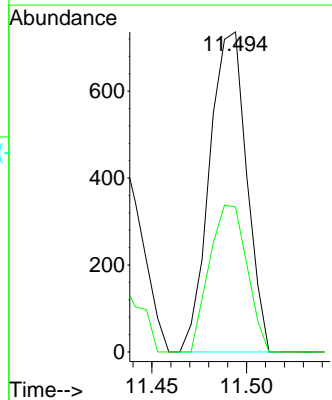
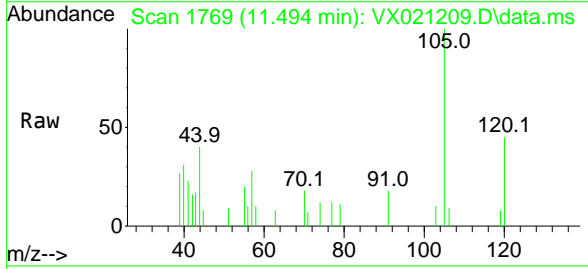


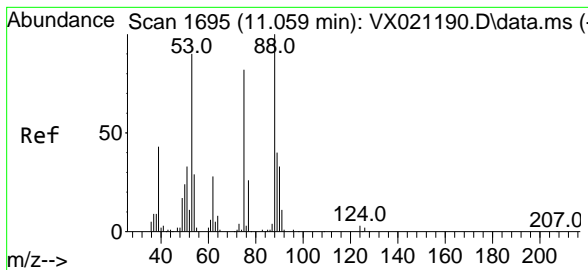
Tgt Ion: 75 Resp: 38834  
 Ion Ratio Lower Upper  
 75 100  
 77 1.5 19.1 57.5#



#80  
 1,3,5-Trimethylbenzene  
 Concen: 0.26 ug/l  
 RT: 11.494 min Scan# 1769  
 Delta R.T. 0.006 min  
 Lab File: VX021209.D  
 Acq: 15 Mar 2021 18:54

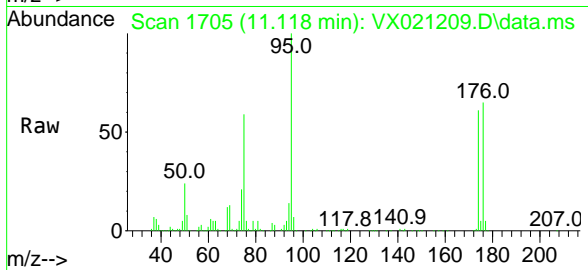
Tgt Ion: 105 Resp: 1003  
 Ion Ratio Lower Upper  
 105 100  
 120 46.4 23.8 71.5



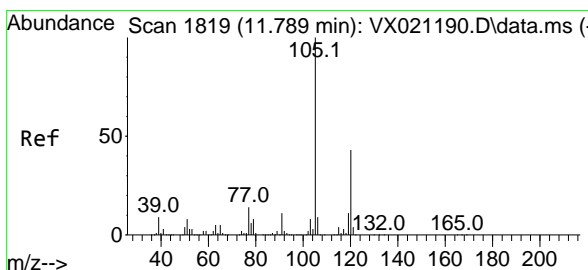
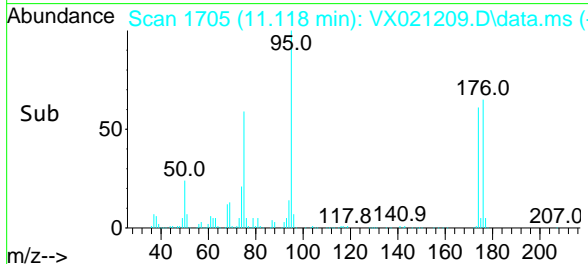
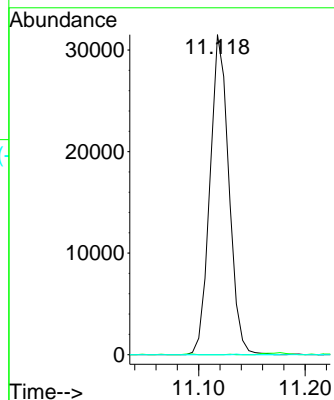


#81  
 trans-1,4-Dichloro-2-butene  
 Concen: 75.34 ug/l  
 RT: 11.118 min Scan# 1705  
 Delta R.T. 0.059 min  
 Lab File: VX021209.D  
 Acq: 15 Mar 2021 18:54

Instrument :  
 MSVOA\_X  
 ClientSampleId :  
 COMP1-41730:31

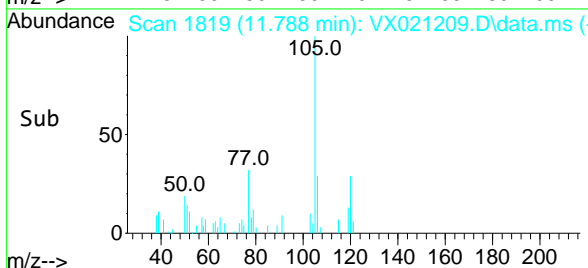
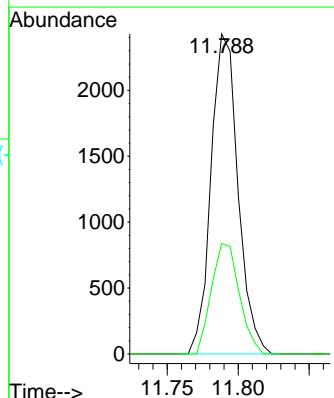
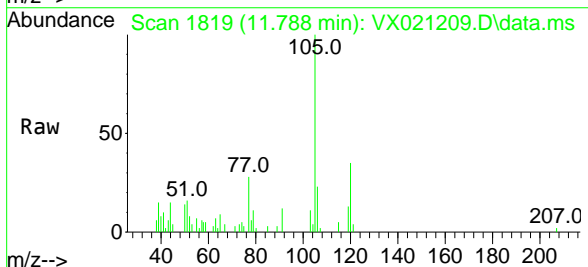


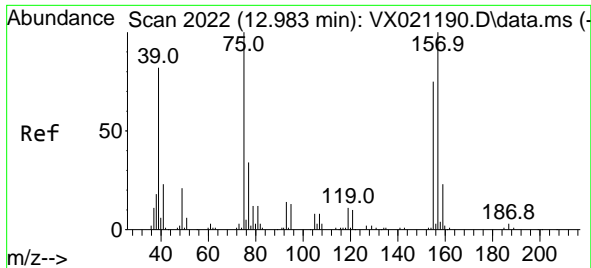
Tgt Ion: 75 Resp: 38834  
 Ion Ratio Lower Upper  
 75 100  
 53 0.0 74.5 111.7#  
 89 0.1 37.9 56.9#



#84  
 1,2,4-Trimethylbenzene  
 Concen: 0.83 ug/l  
 RT: 11.788 min Scan# 1819  
 Delta R.T. -0.000 min  
 Lab File: VX021209.D  
 Acq: 15 Mar 2021 18:54

Tgt Ion: 105 Resp: 3205  
 Ion Ratio Lower Upper  
 105 100  
 120 35.6 22.4 67.3



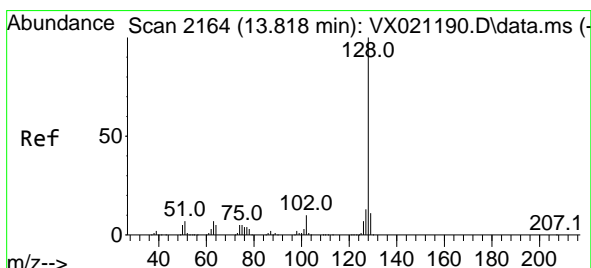
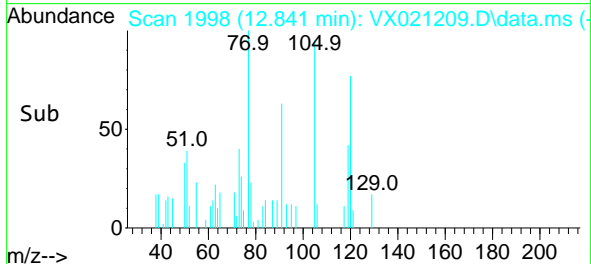
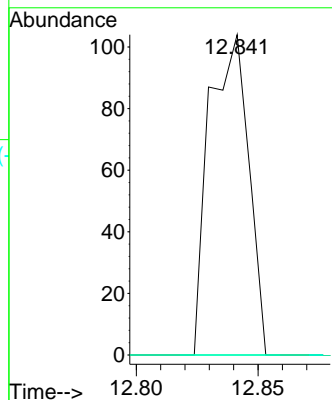
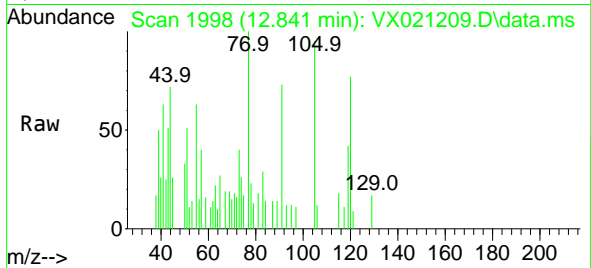


#92  
 1,2-Dibromo-3-Chloropropane  
 Concen: 0.32 ug/l  
 RT: 12.841 min Scan# 1998  
 Delta R.T. -0.141 min  
 Lab File: VX021209.D  
 Acq: 15 Mar 2021 18:54

Instrument :  
 MSVOA\_X  
 ClientSampleId :  
 COMP1-41730:31

Tgt Ion: 75 Resp: 117

Ion	Ratio	Lower	Upper
75	100		
155	0.0	45.3	135.9#
157	0.0	57.7	173.1#



#95  
 Naphthalene  
 Concen: 8.09 ug/l  
 RT: 13.818 min Scan# 2164  
 Delta R.T. 0.000 min  
 Lab File: VX021209.D  
 Acq: 15 Mar 2021 18:54

Tgt Ion: 128 Resp: 29681

Ion	Ratio	Lower	Upper
128	100		
127	13.0	10.3	15.5
129	11.1	8.8	13.2

