

Data Path : Z:\voasrv\HPCHEM1\MSVOA\_X\Data\VX031521\  
 Data File : VX021211.D  
 Acq On : 15 Mar 2021 19:41  
 Operator : JC/MD  
 Sample : M1647-20  
 Misc : 5.0mL/MSVOA\_X/WATER  
 ALS Vial : 26 Sample Multiplier: 1

Instrument :  
 MSVOA\_X  
 ClientSampled :

Quant Time: Mar 16 03:05:41 2021  
 Quant Method : Z:\voasrv\HPCHEM1\MSVOA\_X\Method\82X031521W.M  
 Quant Title : SW846 8260  
 QLast Update : Mon Mar 15 11:55:59 2021  
 Response via : Initial Calibration

Compound	R.T.	QIon	Response	Conc	Units	Dev(Min)
Internal Standards						
1) Pentafluorobenzene	5.629	168	70559	50.00	ug/l	0.00
34) 1,4-Difluorobenzene	6.829	114	130433	50.00	ug/l	0.00
63) Chlorobenzene-d5	10.094	117	123367	50.00	ug/l	0.00
72) 1,4-Dichlorobenzene-d4	12.059	152	54872	50.00	ug/l	0.00
System Monitoring Compounds						
33) 1,2-Dichloroethane-d4	6.029	65	61959	51.50	ug/l	0.00
Spiked Amount	50.000	Range 61 - 141	Recovery	=	103.00%	
35) Dibromofluoromethane	5.470	113	45062	50.21	ug/l	0.00
Spiked Amount	50.000	Range 69 - 133	Recovery	=	100.42%	
50) Toluene-d8	8.694	98	162311	50.35	ug/l	0.00
Spiked Amount	50.000	Range 65 - 126	Recovery	=	100.70%	
62) 4-Bromofluorobenzene	11.118	95	64389	52.41	ug/l	0.00
Spiked Amount	50.000	Range 58 - 135	Recovery	=	104.82%	
Target Compounds						
						Qvalue
3) Chloromethane	1.310	50	221	0.24	ug/l	90
5) Bromomethane	1.634	94	181	0.35	ug/l	81
11) Tert butyl alcohol	3.011	59	3143	15.00	ug/l #	86
13) Acrolein	2.287	56	9547	74.13	ug/l #	14
14) Allyl chloride	2.581	41	2458	1.48	ug/l #	54
16) Acetone	2.422	43	564016	1166.23	ug/l	89
18) Methyl Acetate	2.752	43	2438	2.08	ug/l #	89
20) Methylene Chloride	2.828	84	370	0.41	ug/l #	88
22) Diisopropyl ether	3.940	45	40962	13.52	ug/l #	1
23) Vinyl Acetate	3.940	43	109616	41.37	ug/l #	68
25) 2-Butanone	4.640	43	11157	16.04	ug/l	89
29) Tetrahydrofuran	5.099	42	141	0.31	ug/l #	27
31) Cyclohexane	5.629	56	2088	1.37	ug/l #	33
36) 1,1-Dichloropropene	5.623	75	6621	4.84	ug/l #	49
37) Ethyl Acetate	4.640	43	11157	7.41	ug/l #	65
38) Carbon Tetrachloride	5.629	117	7848	5.23	ug/l #	17
40) Benzene	6.117	78	22889	5.99	ug/l	97
48) Methyl methacrylate	7.746	41	362	0.28	ug/l #	31
49) 1,4-Dioxane	7.717	88	441	20.11	ug/l #	1
51) 4-Methyl-2-Pentanone	8.617	43	3352	2.33	ug/l	89
52) Toluene	8.764	92	5119	2.22	ug/l	98
59) 2-Hexanone	9.470	43	1306	1.20	ug/l	77
67) Ethyl Benzene	10.229	91	1945	0.41	ug/l	100
68) m/p-Xylenes	10.341	106	4793	2.82	ug/l	90
69) o-Xylene	10.682	106	3757	2.28	ug/l	89
70) Styrene	10.694	104	824	0.29	ug/l #	20
74) N-amyl acetate	10.894	43	494	0.24	ug/l #	68
75) 1,1,2,2-Tetrachloroethane	11.188	83	13938	10.61	ug/l #	36
76) 1,2,3-Trichloropropane	11.118	75	36972	27.17	ug/l #	38
79) 2-Chlorotoluene	11.418	91	728	0.25	ug/l #	41
80) 1,3,5-Trimethylbenzene	11.488	105	3574	1.00	ug/l	98
81) trans-1,4-Dichloro-2-b...	11.118	75	36972	77.12	ug/l #	12
84) 1,2,4-Trimethylbenzene	11.788	105	8528	2.37	ug/l	95
95) Naphthalene	13.818	128	4911	2.64	ug/l #	95

Data Path : Z:\voasrv\HPCHEM1\MSVOA\_X\Data\VX031521\  
Data File : VX021211.D  
Acq On : 15 Mar 2021 19:41  
Operator : JC/MD  
Sample : M1647-20  
Misc : 5.0mL/MSVOA\_X/WATER  
ALS Vial : 26 Sample Multiplier: 1

Instrument :  
MSVOA\_X  
ClientSampleId :

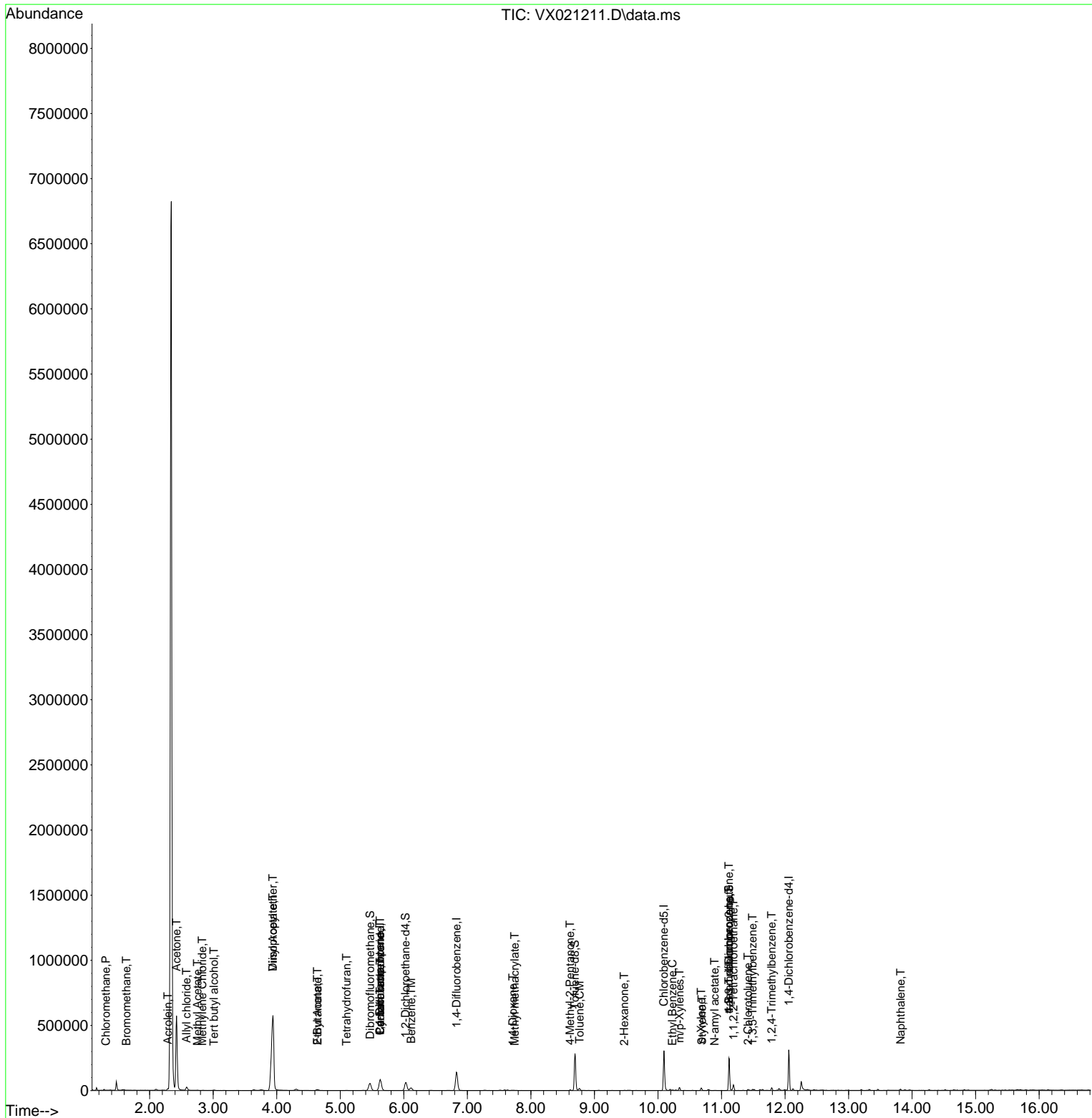
Quant Time: Mar 16 03:05:41 2021  
Quant Method : Z:\voasrv\HPCHEM1\MSVOA\_X\Method\82X031521W.M  
Quant Title : SW846 8260  
QLast Update : Mon Mar 15 11:55:59 2021  
Response via : Initial Calibration

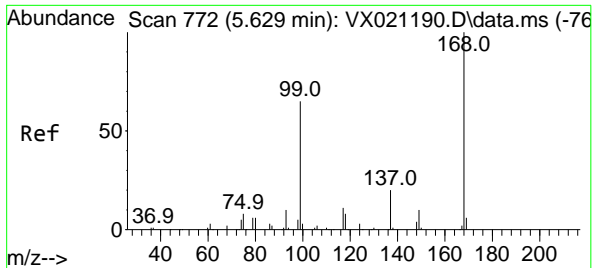
Compound	R.T.	QIon	Response	Conc	Units	Dev(Min)
-----						
(#) = qualifier out of range (m) = manual integration (+) = signals summed						

Data Path : Z:\voasrv\HPCHEM1\MSVOA\_X\Data\VX031521\  
 Data File : VX021211.D  
 Acq On : 15 Mar 2021 19:41  
 Operator : JC/MD  
 Sample : M1647-20  
 Misc : 5.0mL/MSVOA\_X/WATER  
 ALS Vial : 26 Sample Multiplier: 1

Instrument :  
 MSVOA\_X  
 ClientSampleId :

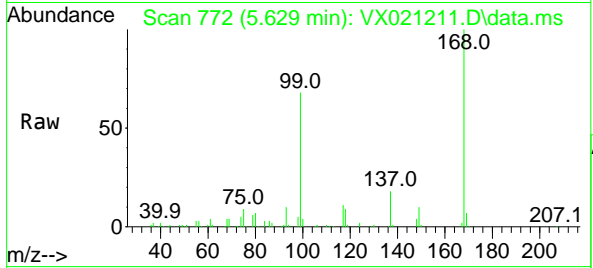
Quant Time: Mar 16 03:05:41 2021  
 Quant Method : Z:\voasrv\HPCHEM1\MSVOA\_X\Method\82X031521W.M  
 Quant Title : SW846 8260  
 QLast Update : Mon Mar 15 11:55:59 2021  
 Response via : Initial Calibration



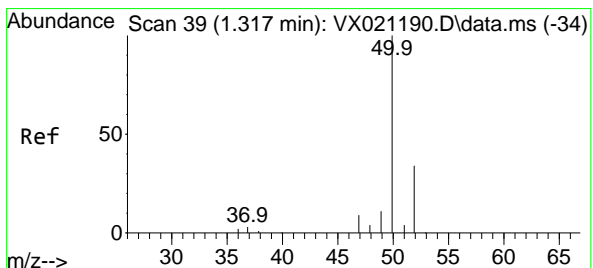
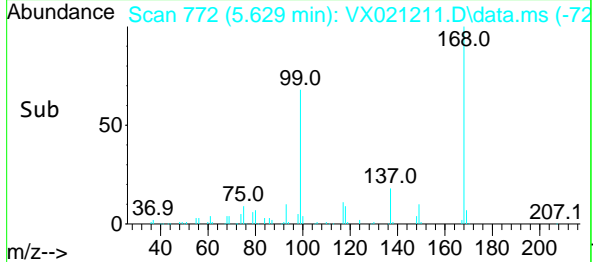
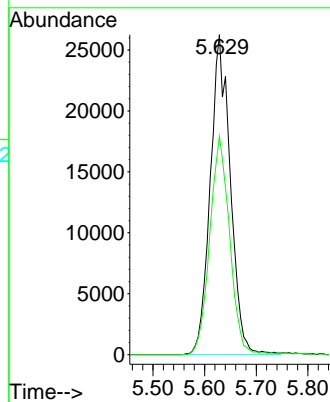


#1  
 Pentafluorobenzene  
 Concen: 50.00 ug/l  
 RT: 5.629 min Scan# 772  
 Delta R.T. 0.006 min  
 Lab File: VX021211.D  
 Acq: 15 Mar 2021 19:41

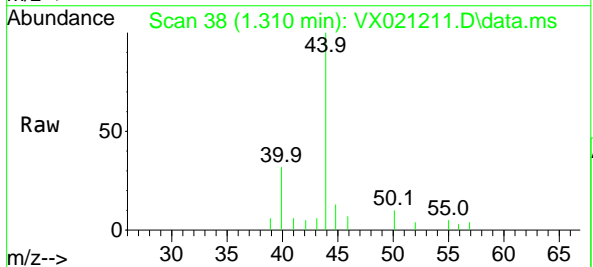
Instrument :  
 MSVOA\_X  
 ClientSampleId :



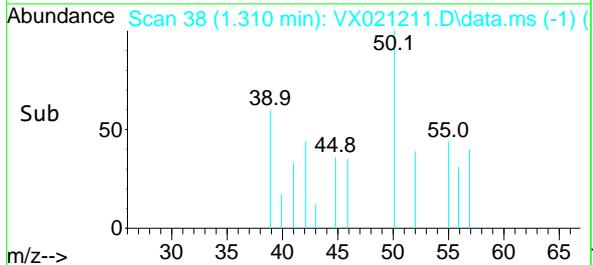
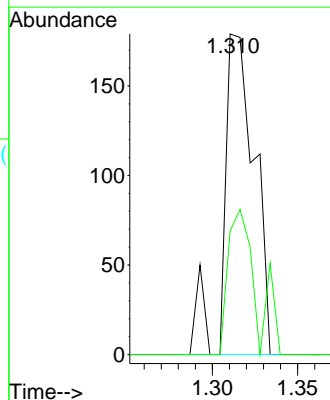
Tgt Ion:168 Resp: 70559  
 Ion Ratio Lower Upper  
 168 100  
 99 68.2 45.8 68.6

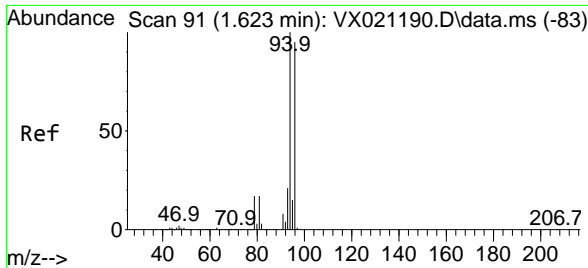


#3  
 Chloromethane  
 Concen: 0.24 ug/l  
 RT: 1.310 min Scan# 38  
 Delta R.T. -0.000 min  
 Lab File: VX021211.D  
 Acq: 15 Mar 2021 19:41



Tgt Ion: 50 Resp: 221  
 Ion Ratio Lower Upper  
 50 100  
 52 38.5 26.4 39.6

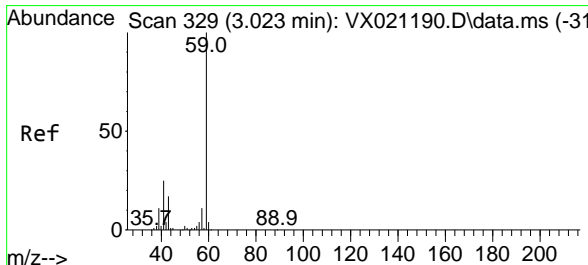
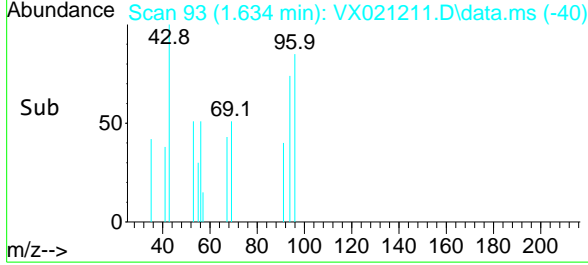
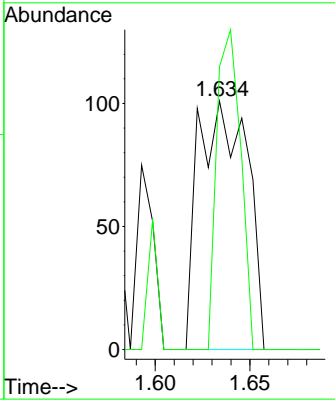
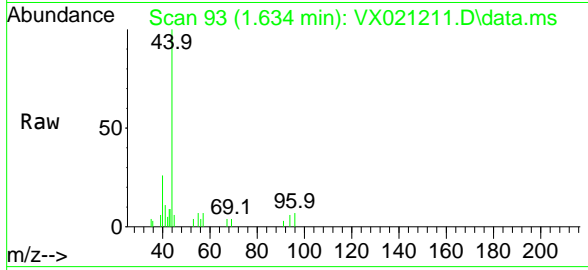




#5  
 Bromomethane  
 Concen: 0.35 ug/l  
 RT: 1.634 min Scan# 93  
 Delta R.T. 0.011 min  
 Lab File: VX021211.D  
 Acq: 15 Mar 2021 19:41

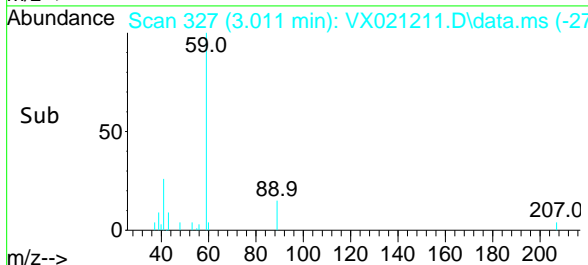
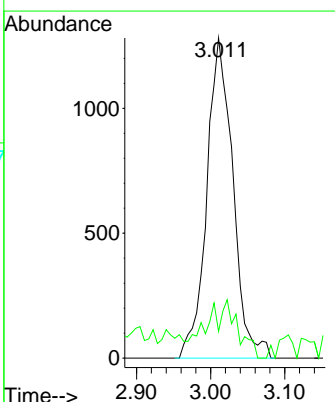
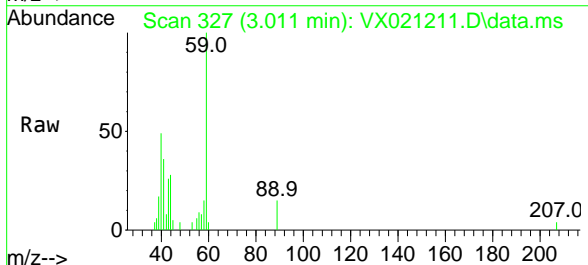
Instrument :  
 MSVOA\_X  
 ClientSampleId :

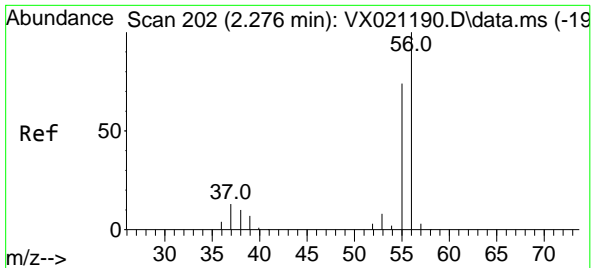
Tgt Ion: 94 Resp: 181  
 Ion Ratio Lower Upper  
 94 100  
 96 113.9 76.4 114.6



#11  
 Tert butyl alcohol  
 Concen: 15.00 ug/l  
 RT: 3.011 min Scan# 327  
 Delta R.T. -0.006 min  
 Lab File: VX021211.D  
 Acq: 15 Mar 2021 19:41

Tgt Ion: 59 Resp: 3143  
 Ion Ratio Lower Upper  
 59 100  
 57 4.8 7.8 11.8#

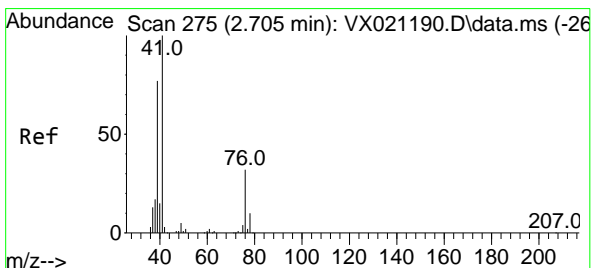
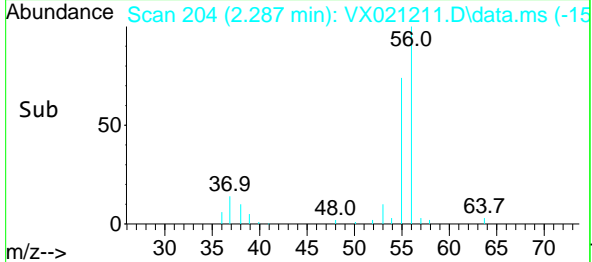
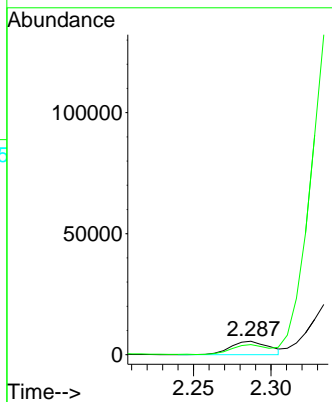
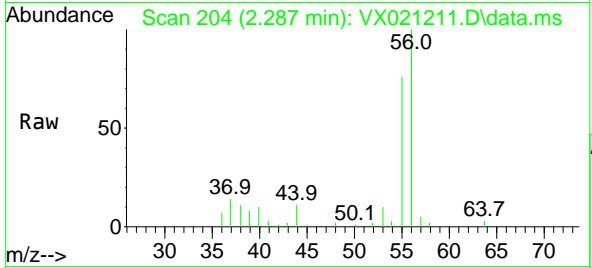




#13  
 Acrolein  
 Concen: 74.13 ug/l  
 RT: 2.287 min Scan# 204  
 Delta R.T. 0.011 min  
 Lab File: VX021211.D  
 Acq: 15 Mar 2021 19:41

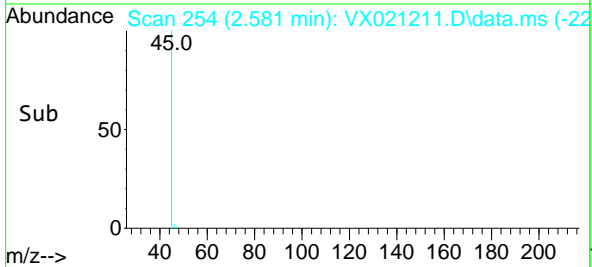
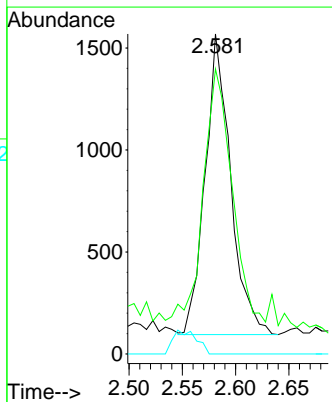
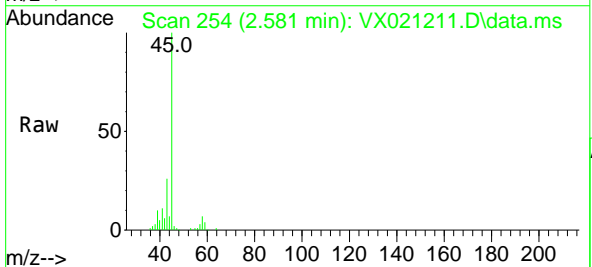
Instrument :  
 MSVOA\_X  
 ClientSampled :

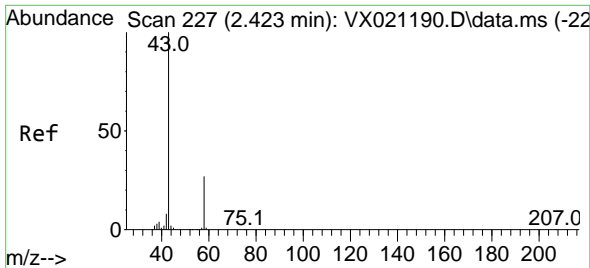
Tgt Ion: 56 Resp: 9547  
 Ion Ratio Lower Upper  
 56 100  
 55 0.0 56.4 84.6#



#14  
 Allyl chloride  
 Concen: 1.48 ug/l  
 RT: 2.581 min Scan# 254  
 Delta R.T. -0.124 min  
 Lab File: VX021211.D  
 Acq: 15 Mar 2021 19:41

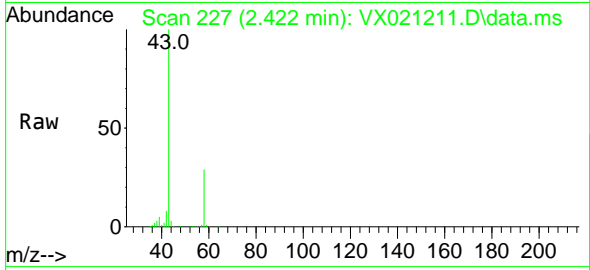
Tgt Ion: 41 Resp: 2458  
 Ion Ratio Lower Upper  
 41 100  
 39 93.1 51.6 77.4#  
 76 0.0 30.5 45.7#



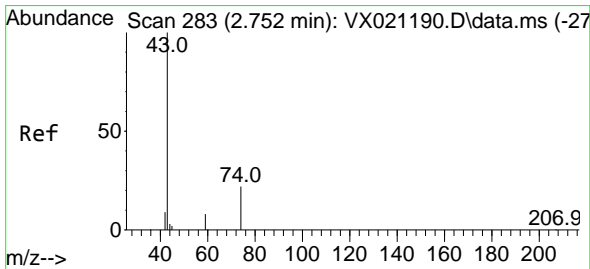
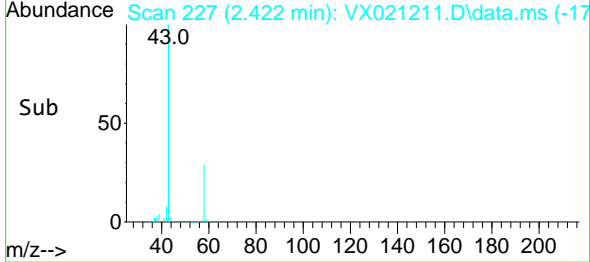
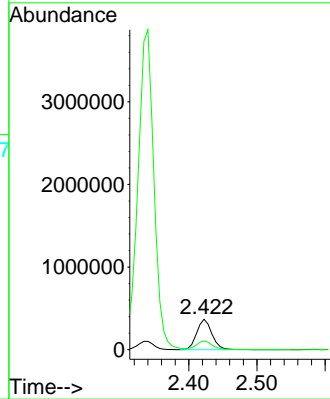


#16  
 Acetone  
 Concen: 1166.23 ug/l  
 RT: 2.422 min Scan# 227  
 Delta R.T. -0.000 min  
 Lab File: VX021211.D  
 Acq: 15 Mar 2021 19:41

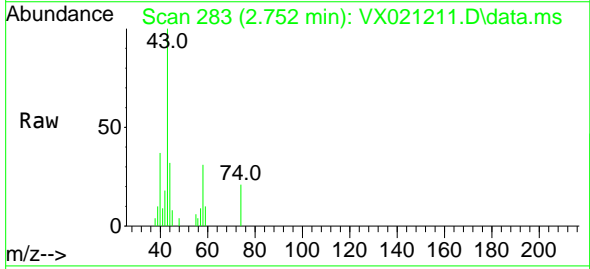
Instrument :  
 MSVOA\_X  
 ClientSampled :



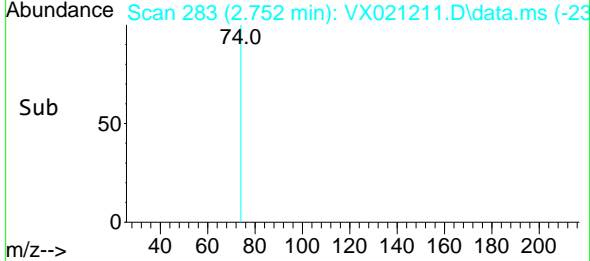
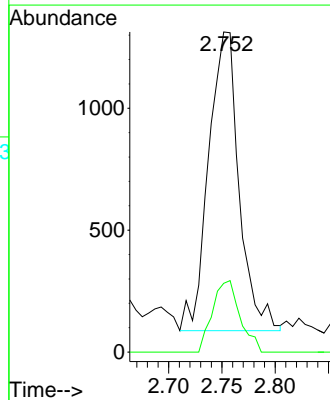
Tgt Ion: 43 Resp: 564016  
 Ion Ratio Lower Upper  
 43 100  
 58 28.3 27.8 41.8

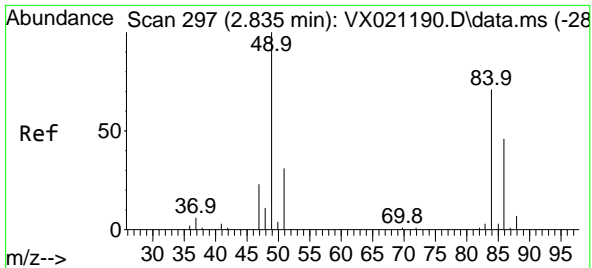


#18  
 Methyl Acetate  
 Concen: 2.08 ug/l  
 RT: 2.752 min Scan# 283  
 Delta R.T. -0.000 min  
 Lab File: VX021211.D  
 Acq: 15 Mar 2021 19:41



Tgt Ion: 43 Resp: 2438  
 Ion Ratio Lower Upper  
 43 100  
 74 21.5 21.9 32.9#

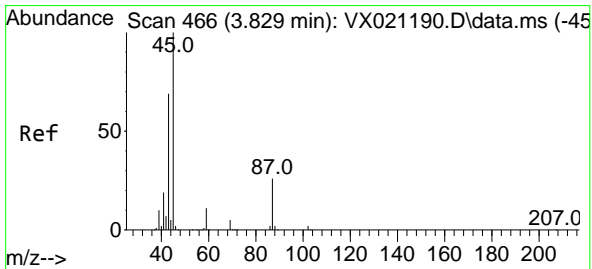
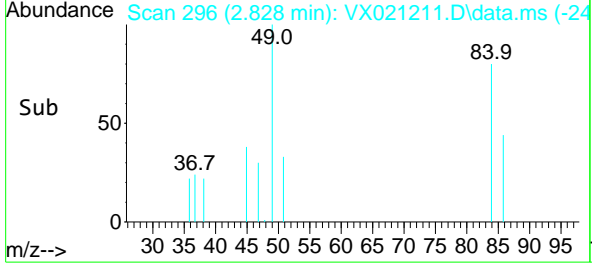
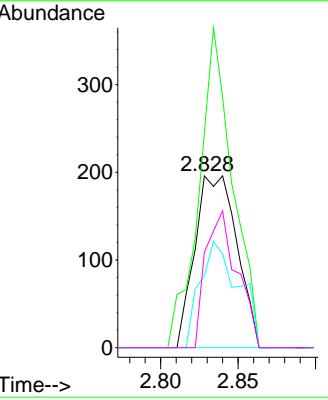
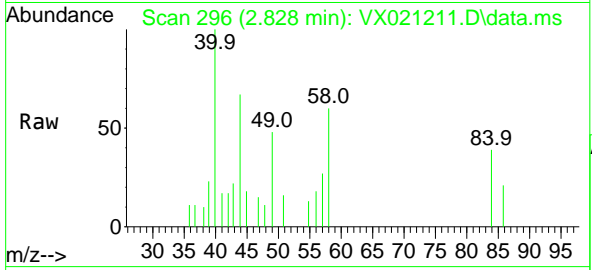




#20  
 Methylene Chloride  
 Concen: 0.41 ug/l  
 RT: 2.828 min Scan# 296  
 Delta R.T. -0.006 min  
 Lab File: VX021211.D  
 Acq: 15 Mar 2021 19:41

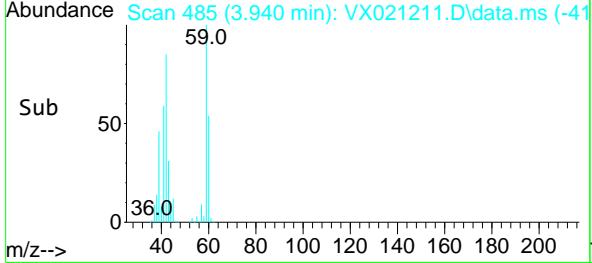
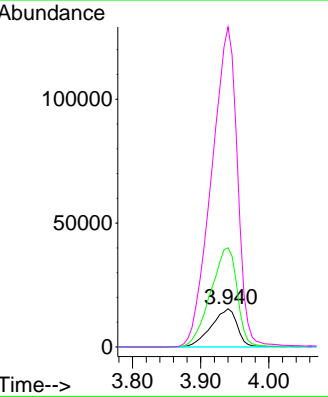
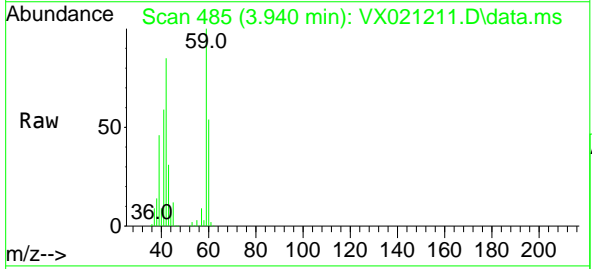
Instrument :  
 MSVOA\_X  
 ClientSampled :

Tgt Ion	Resp	Lower	Upper
84	370		
84	100		
49	125.0	88.6	132.8
51	41.8	27.0	40.6#
86	55.6	50.3	75.5

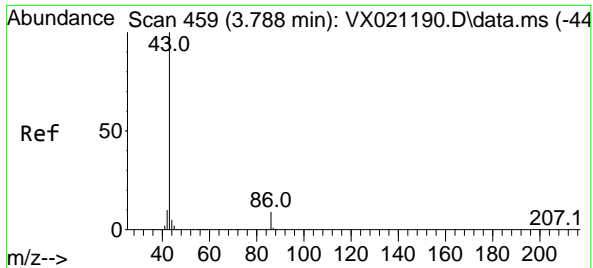


#22  
 Diisopropyl ether  
 Concen: 13.52 ug/l  
 RT: 3.940 min Scan# 485  
 Delta R.T. 0.111 min  
 Lab File: VX021211.D  
 Acq: 15 Mar 2021 19:41

Tgt Ion	Resp	Lower	Upper
45	40962		
45	100		
43	258.8	58.0	87.0#
87	0.0	25.4	38.0#
59	835.7	10.2	15.2#

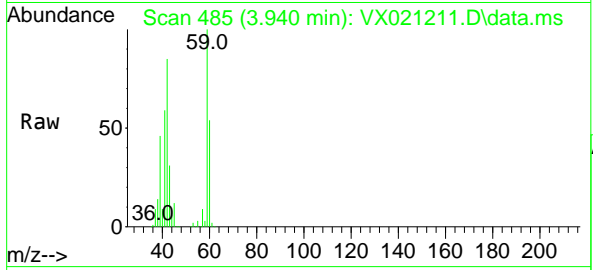




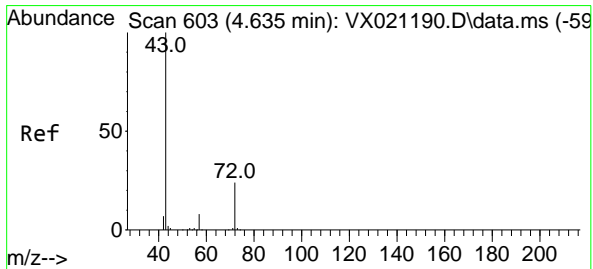
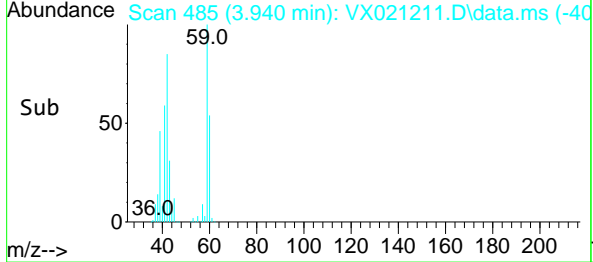
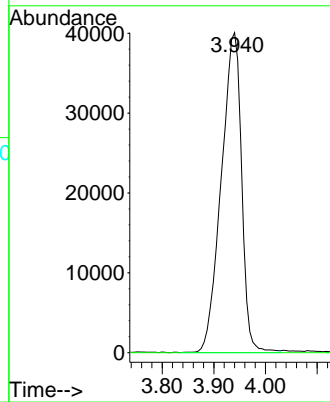


#23  
 Vinyl Acetate  
 Concen: 41.37 ug/l  
 RT: 3.940 min Scan# 485  
 Delta R.T. 0.153 min  
 Lab File: VX021211.D  
 Acq: 15 Mar 2021 19:41

Instrument :  
 MSVOA\_X  
 ClientSampled :

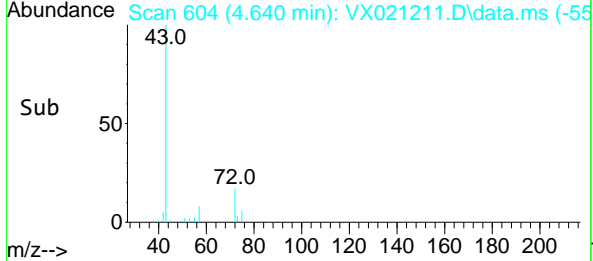
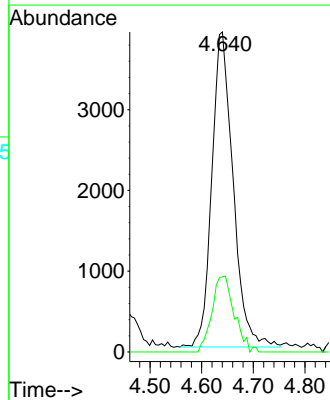
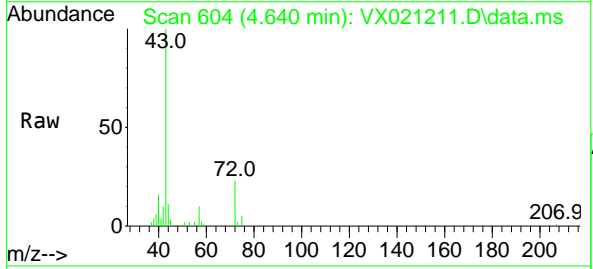


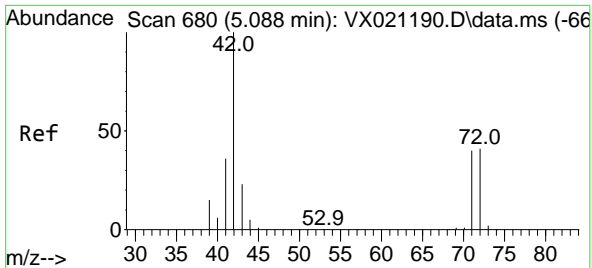
Tgt Ion: 43 Resp: 109616  
 Ion Ratio Lower Upper  
 43 100  
 86 0.0 9.9 14.9#



#25  
 2-Butanone  
 Concen: 16.04 ug/l  
 RT: 4.640 min Scan# 604  
 Delta R.T. 0.005 min  
 Lab File: VX021211.D  
 Acq: 15 Mar 2021 19:41

Tgt Ion: 43 Resp: 11157  
 Ion Ratio Lower Upper  
 43 100  
 72 23.9 23.7 35.5

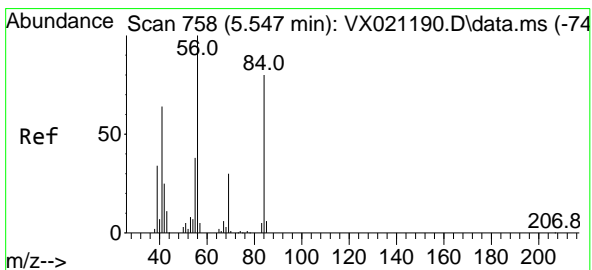
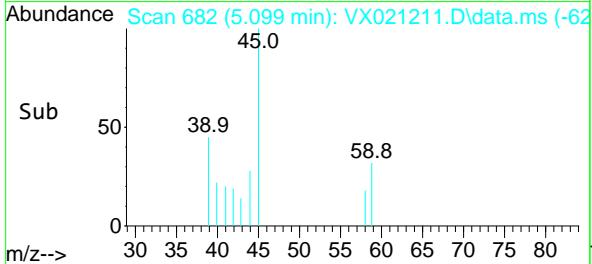
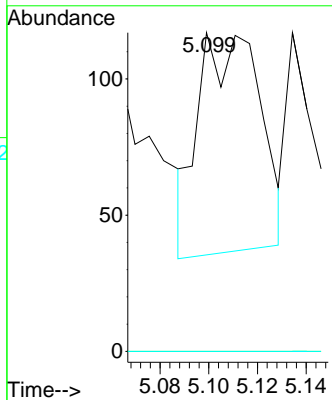
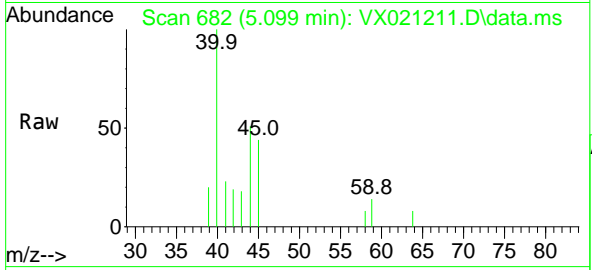




#29  
 Tetrahydrofuran  
 Concen: 0.31 ug/l  
 RT: 5.099 min Scan# 682  
 Delta R.T. 0.011 min  
 Lab File: VX021211.D  
 Acq: 15 Mar 2021 19:41

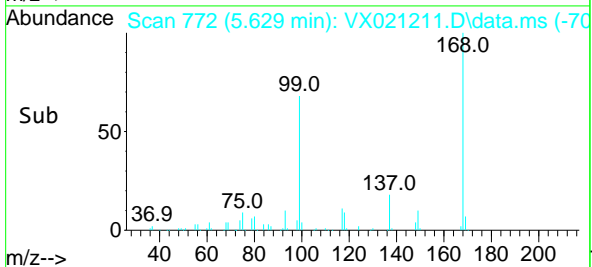
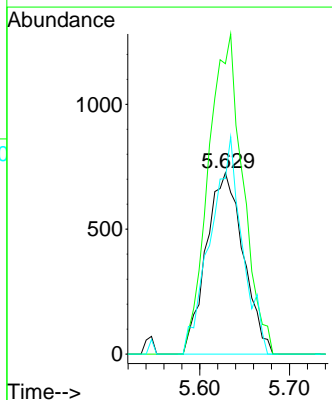
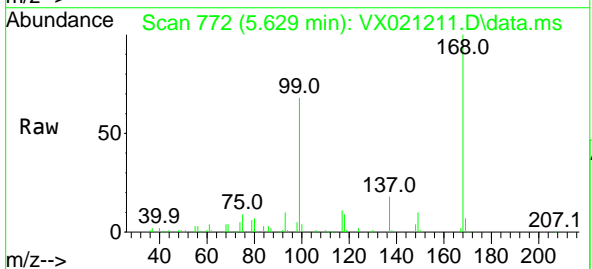
Instrument :  
 MSVOA\_X  
 ClientSampled :

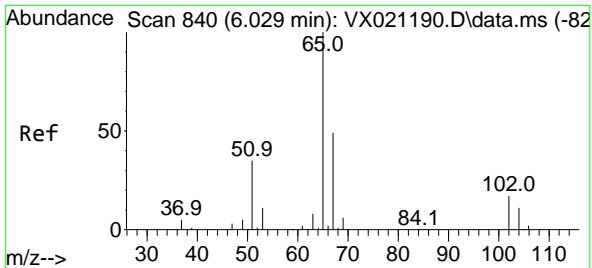
Tgt Ion	Resp	Lower	Upper
42	100		
72	0.0	41.7	62.5#
71	0.0	38.4	57.6#



#31  
 Cyclohexane  
 Concen: 1.37 ug/l  
 RT: 5.629 min Scan# 772  
 Delta R.T. 0.082 min  
 Lab File: VX021211.D  
 Acq: 15 Mar 2021 19:41

Tgt Ion	Resp	Lower	Upper
56	100		
69	160.2	25.3	37.9#
84	96.8	71.4	107.0

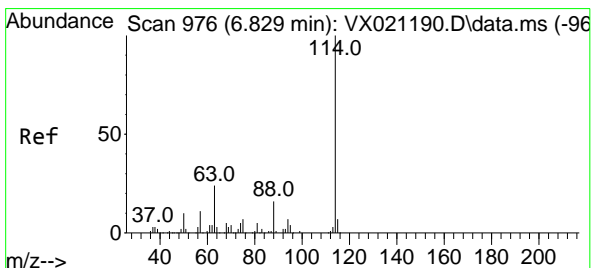
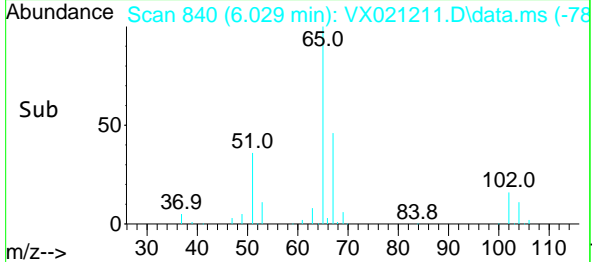
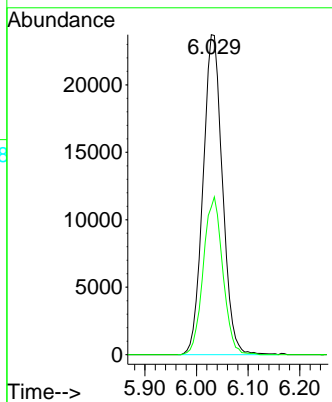
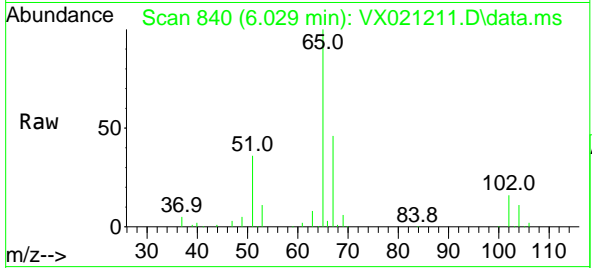




#33  
 1,2-Dichloroethane-d4  
 Concen: 51.50 ug/l  
 RT: 6.029 min Scan# 840  
 Delta R.T. -0.000 min  
 Lab File: VX021211.D  
 Acq: 15 Mar 2021 19:41

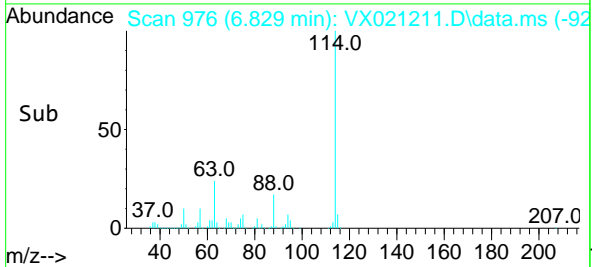
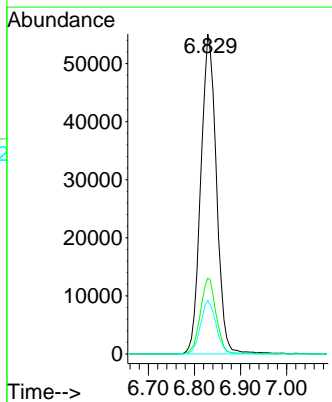
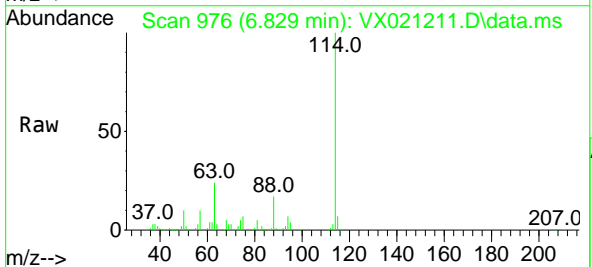
Instrument :  
 MSVOA\_X  
 ClientSampled :

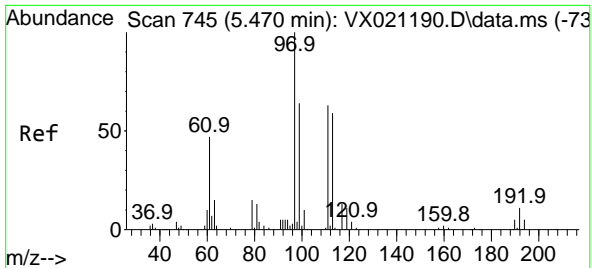
Tgt Ion: 65 Resp: 61959  
 Ion Ratio Lower Upper  
 65 100  
 67 49.4 0.0 105.4



#34  
 1,4-Difluorobenzene  
 Concen: 50.00 ug/l  
 RT: 6.829 min Scan# 976  
 Delta R.T. -0.000 min  
 Lab File: VX021211.D  
 Acq: 15 Mar 2021 19:41

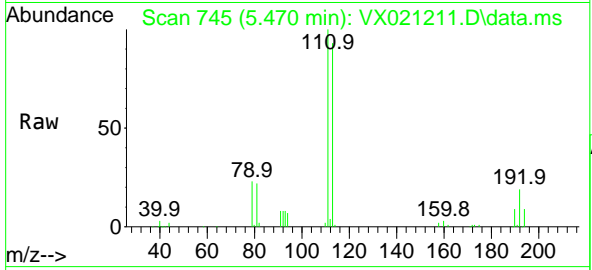
Tgt Ion: 114 Resp: 130433  
 Ion Ratio Lower Upper  
 114 100  
 63 23.6 0.0 40.8  
 88 16.7 0.0 32.8





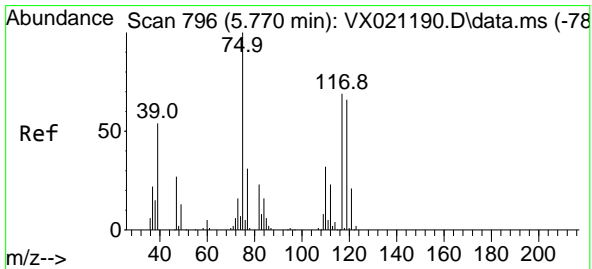
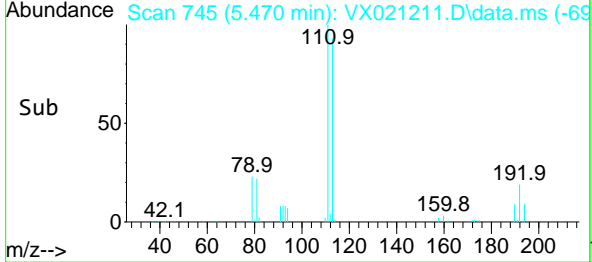
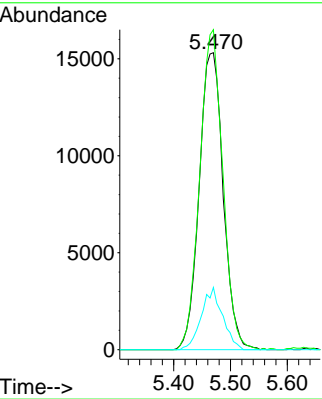
#35  
 Dibromofluoromethane  
 Concen: 50.21 ug/l  
 RT: 5.470 min Scan# 745  
 Delta R.T. 0.005 min  
 Lab File: VX021211.D  
 Acq: 15 Mar 2021 19:41

Instrument :  
 MSVOA\_X  
 ClientSampleId :

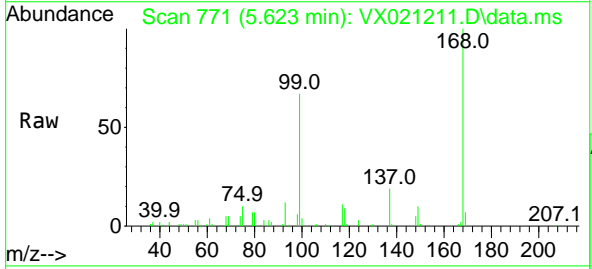


Tgt Ion:113 Resp: 45062

Ion	Ratio	Lower	Upper
113	100		
111	103.3	81.9	122.9
192	18.5	16.7	25.1

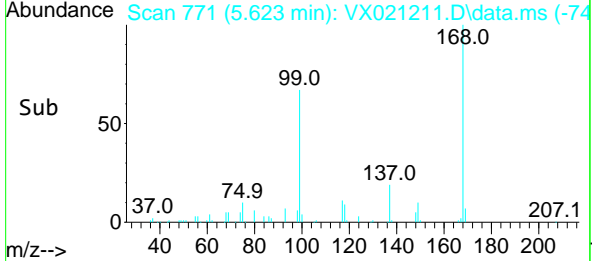
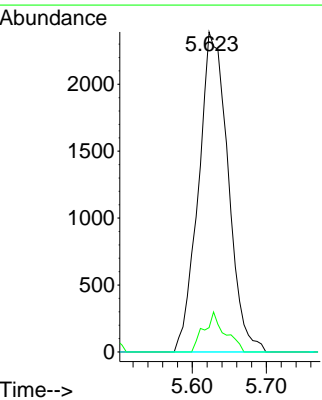


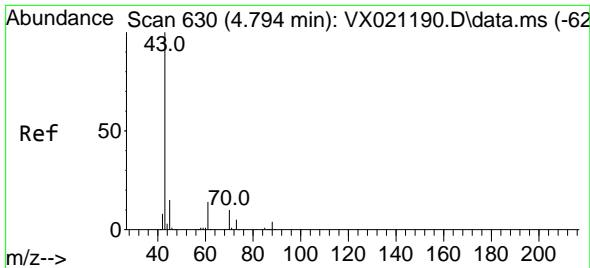
#36  
 1,1-Dichloropropene  
 Concen: 4.84 ug/l  
 RT: 5.623 min Scan# 771  
 Delta R.T. -0.148 min  
 Lab File: VX021211.D  
 Acq: 15 Mar 2021 19:41



Tgt Ion: 75 Resp: 6621

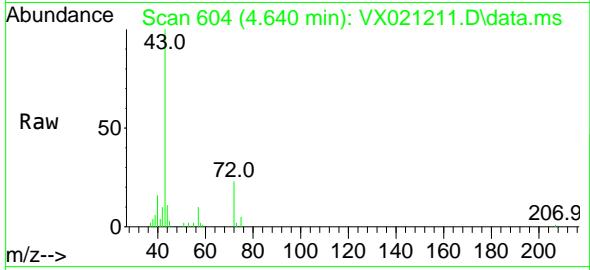
Ion	Ratio	Lower	Upper
75	100		
110	8.8	18.1	54.4#
77	0.0	25.3	37.9#





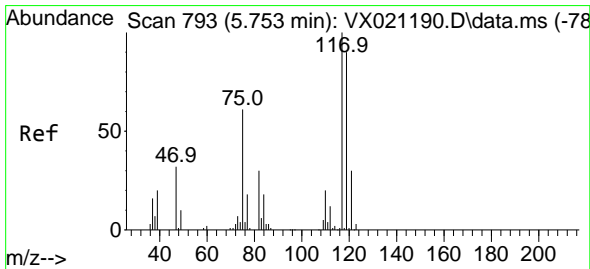
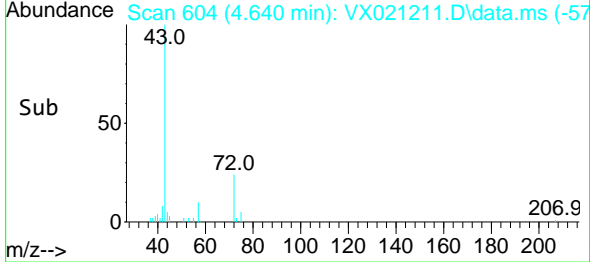
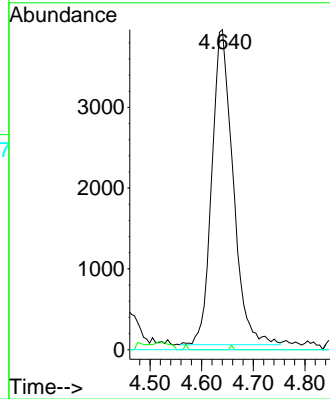
#37  
 Ethyl Acetate  
 Concen: 7.41 ug/l  
 RT: 4.640 min Scan# 604  
 Delta R.T. -0.153 min  
 Lab File: VX021211.D  
 Acq: 15 Mar 2021 19:41

Instrument :  
 MSVOA\_X  
 ClientSampled :

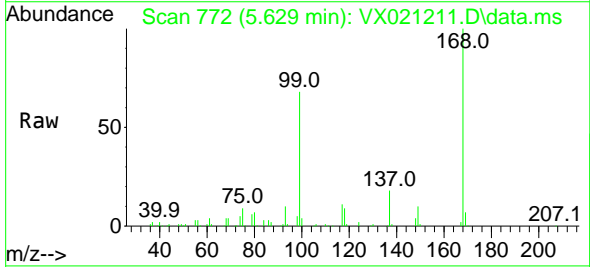


Tgt Ion: 43 Resp: 11157

Ion	Ratio	Lower	Upper
43	100		
61	0.2	12.8	19.2#
70	0.0	10.5	15.7#

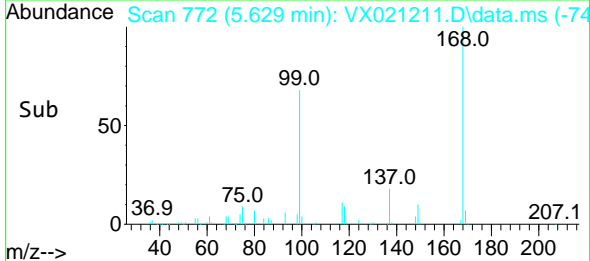
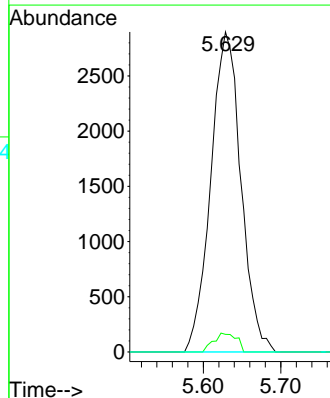


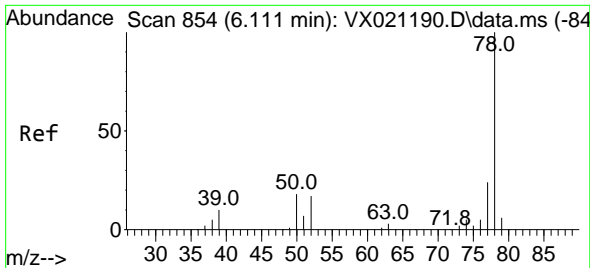
#38  
 Carbon Tetrachloride  
 Concen: 5.23 ug/l  
 RT: 5.629 min Scan# 772  
 Delta R.T. -0.124 min  
 Lab File: VX021211.D  
 Acq: 15 Mar 2021 19:41



Tgt Ion: 117 Resp: 7848

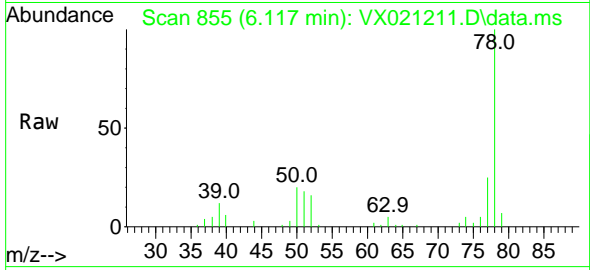
Ion	Ratio	Lower	Upper
117	100		
119	5.5	76.2	114.2#
121	0.0	24.8	37.2#



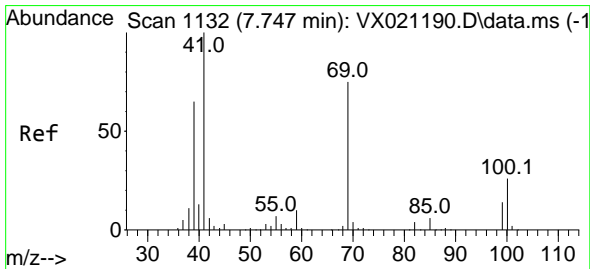
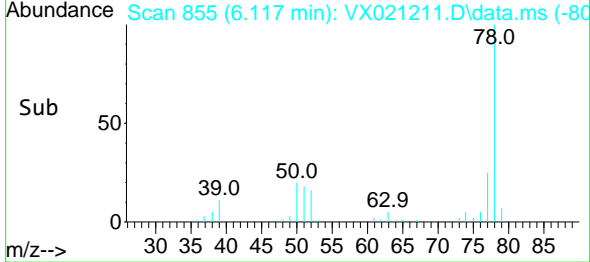
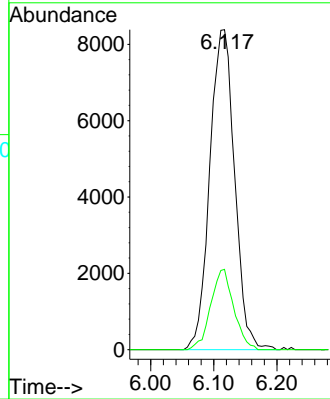


#40  
Benzene  
Concen: 5.99 ug/l  
RT: 6.117 min Scan# 855  
Delta R.T. 0.005 min  
Lab File: VX021211.D  
Acq: 15 Mar 2021 19:41

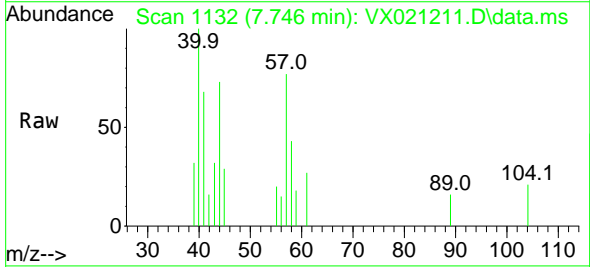
Instrument :  
MSVOA\_X  
ClientSampled :



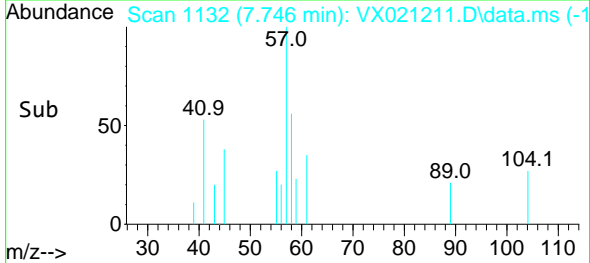
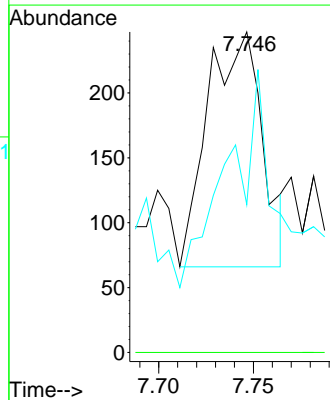
Tgt Ion: 78 Resp: 22889  
Ion Ratio Lower Upper  
78 100  
77 25.1 18.9 28.3

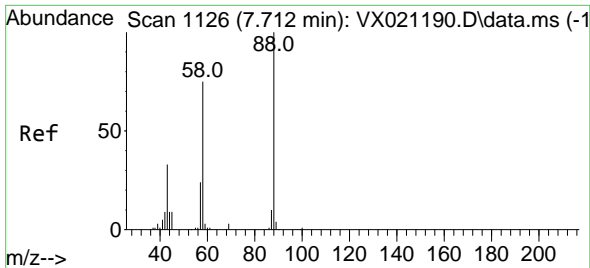


#48  
Methyl methacrylate  
Concen: 0.28 ug/l  
RT: 7.746 min Scan# 1132  
Delta R.T. -0.000 min  
Lab File: VX021211.D  
Acq: 15 Mar 2021 19:41



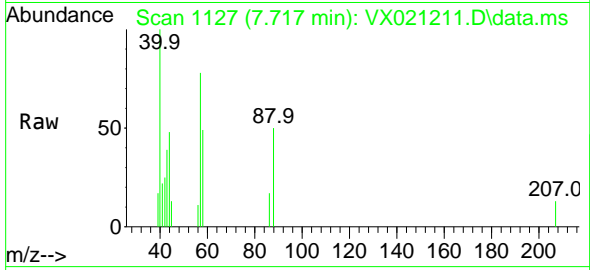
Tgt Ion: 41 Resp: 362  
Ion Ratio Lower Upper  
41 100  
69 0.0 76.0 114.0#  
39 40.6 44.6 67.0#



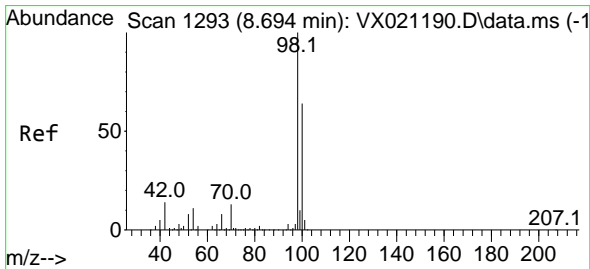
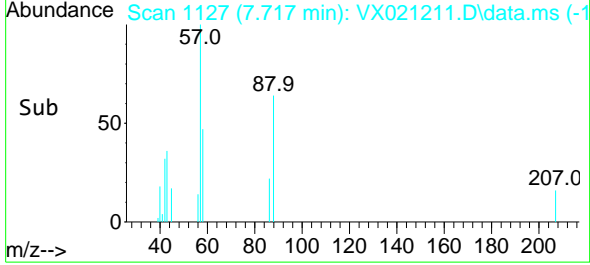
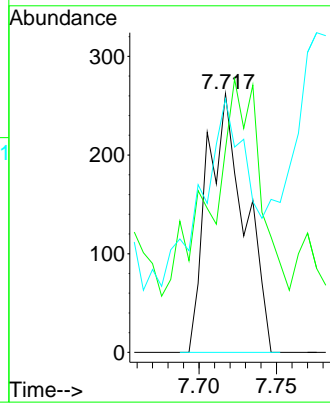


#49  
 1,4-Dioxane  
 Concen: 20.11 ug/l  
 RT: 7.717 min Scan# 1127  
 Delta R.T. 0.005 min  
 Lab File: VX021211.D  
 Acq: 15 Mar 2021 19:41

Instrument :  
 MSVOA\_X  
 ClientSampled :

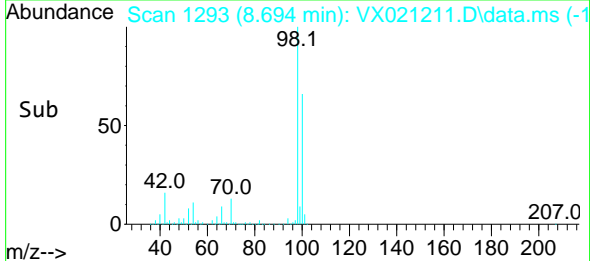
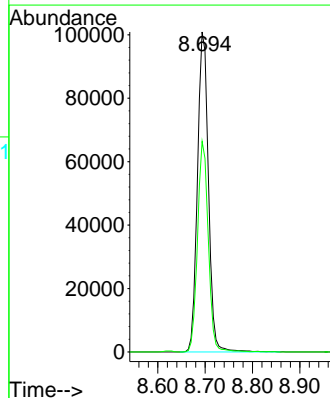
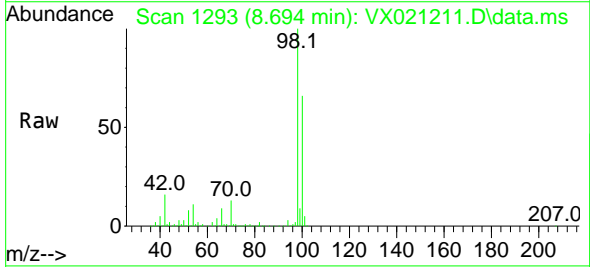


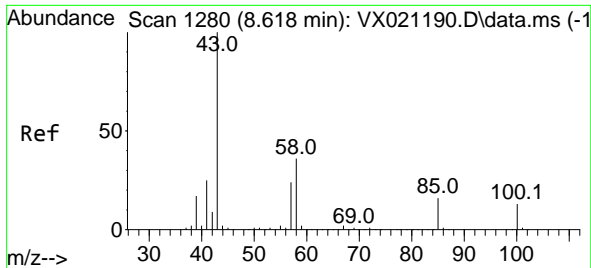
Tgt Ion	Resp	Lower	Upper
88	441		
88	100		
43	106.8	23.2	34.8#
58	146.0	55.0	82.4#



#50  
 Toluene-d8  
 Concen: 50.35 ug/l  
 RT: 8.694 min Scan# 1293  
 Delta R.T. -0.000 min  
 Lab File: VX021211.D  
 Acq: 15 Mar 2021 19:41

Tgt Ion	Resp	Lower	Upper
98	162311		
98	100		
100	64.6	51.9	77.9

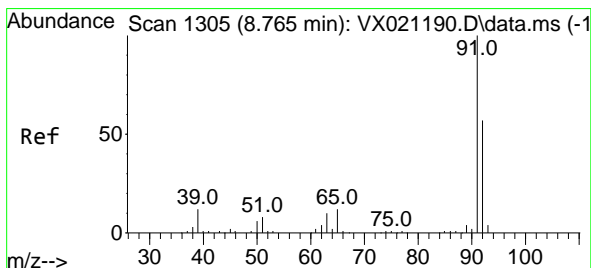
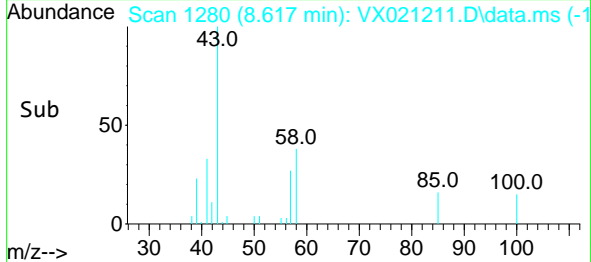
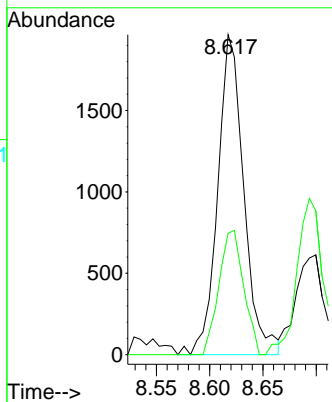
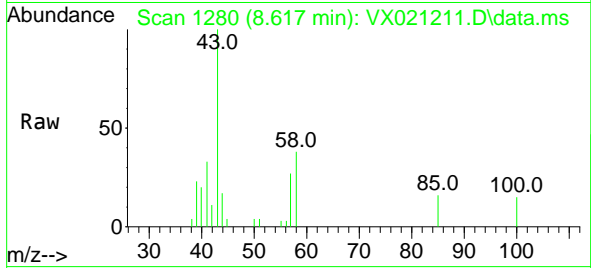




#51  
 4-Methyl-2-Pentanone  
 Concen: 2.33 ug/l  
 RT: 8.617 min Scan# 1280  
 Delta R.T. -0.000 min  
 Lab File: VX021211.D  
 Acq: 15 Mar 2021 19:41

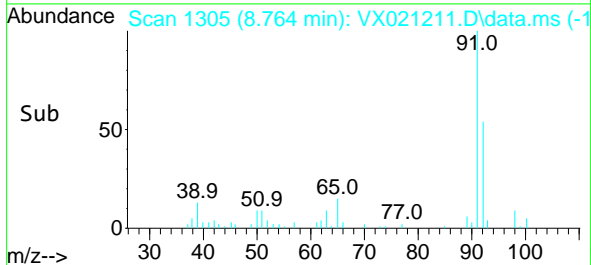
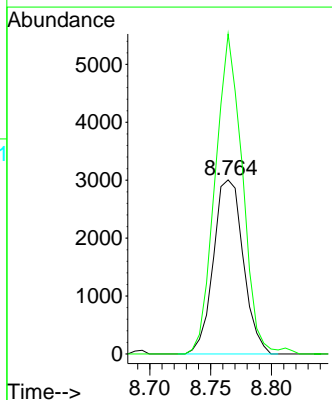
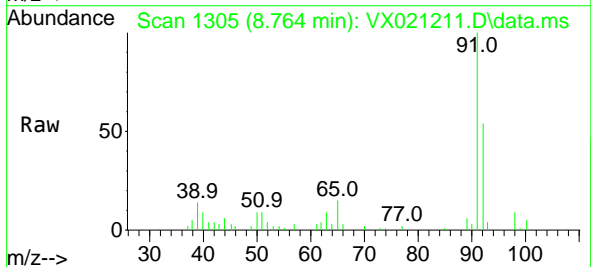
Instrument :  
 MSVOA\_X  
 ClientSampled :

Tgt Ion: 43 Resp: 3352  
 Ion Ratio Lower Upper  
 43 100  
 58 36.8 35.4 53.0

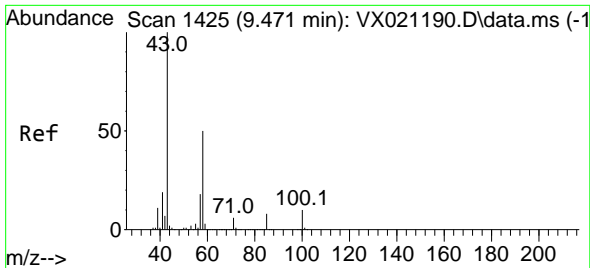


#52  
 Toluene  
 Concen: 2.22 ug/l  
 RT: 8.764 min Scan# 1305  
 Delta R.T. -0.000 min  
 Lab File: VX021211.D  
 Acq: 15 Mar 2021 19:41

Tgt Ion: 92 Resp: 5119  
 Ion Ratio Lower Upper  
 92 100  
 91 168.2 137.1 205.7



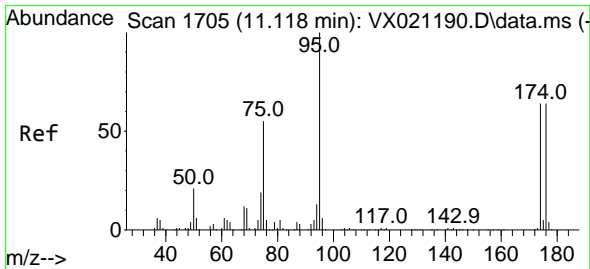
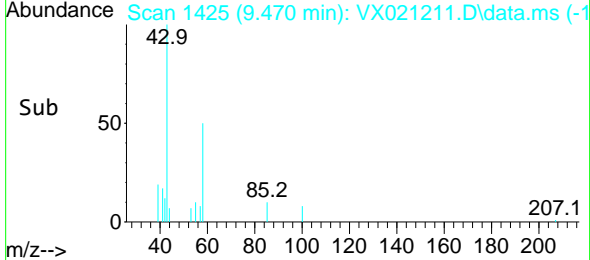
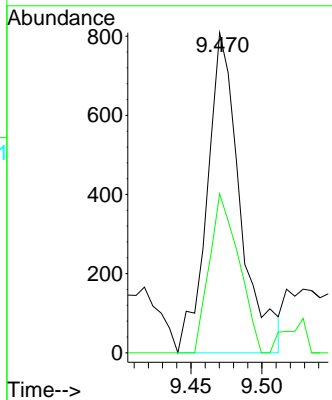
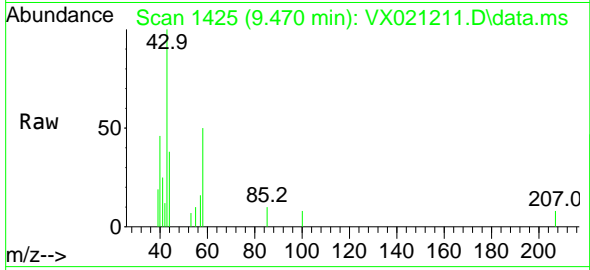




#59  
 2-Hexanone  
 Concen: 1.20 ug/l  
 RT: 9.470 min Scan# 1425  
 Delta R.T. -0.000 min  
 Lab File: VX021211.D  
 Acq: 15 Mar 2021 19:41

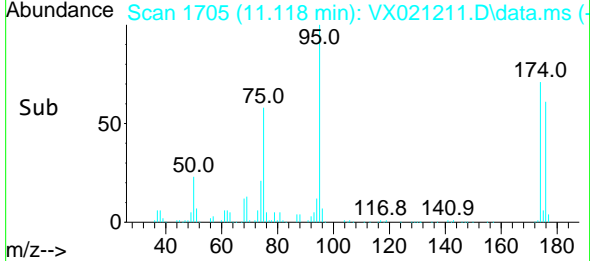
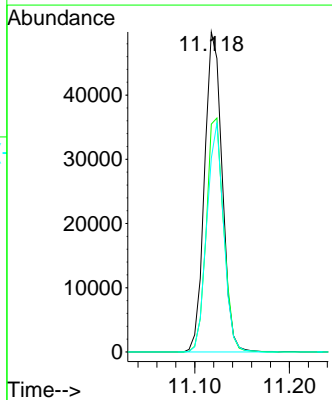
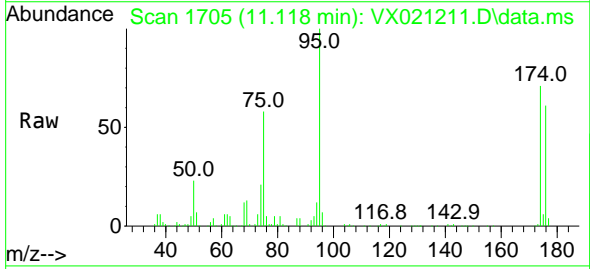
Instrument :  
 MSVOA\_X  
 ClientSampled :

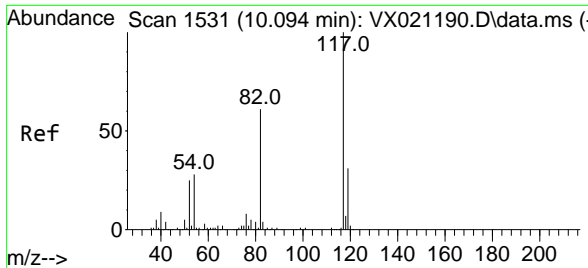
Tgt Ion	Resp	Lower	Upper
43	1306		
58	44.2	30.9	92.8



#62  
 4-Bromofluorobenzene  
 Concen: 52.41 ug/l  
 RT: 11.118 min Scan# 1705  
 Delta R.T. -0.000 min  
 Lab File: VX021211.D  
 Acq: 15 Mar 2021 19:41

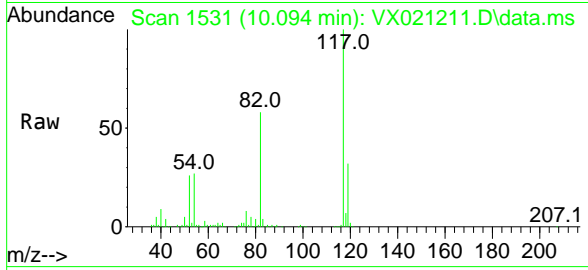
Tgt Ion	Resp	Lower	Upper
95	64389		
174	71.9	0.0	154.6
176	68.2	0.0	155.8





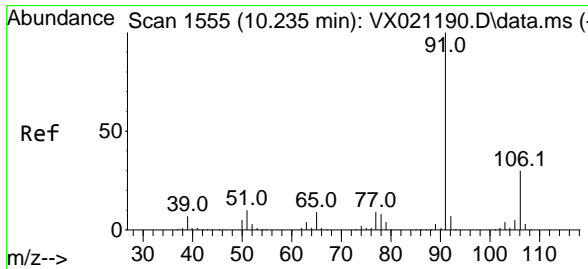
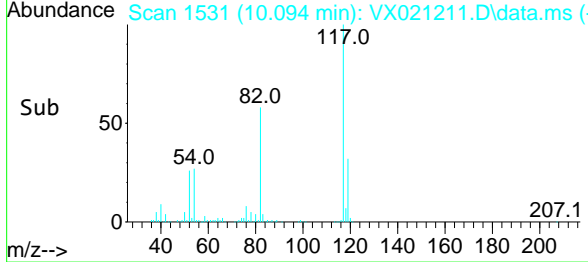
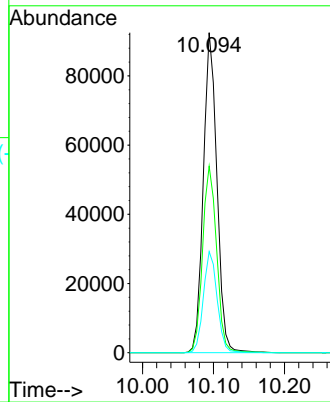
#63  
 Chlorobenzene-d5  
 Concen: 50.00 ug/l  
 RT: 10.094 min Scan# 1531  
 Delta R.T. -0.000 min  
 Lab File: VX021211.D  
 Acq: 15 Mar 2021 19:41

Instrument :  
 MSVOA\_X  
 ClientSampled :

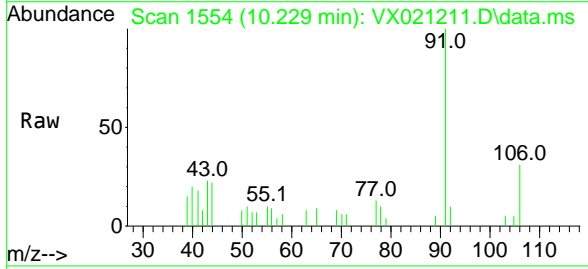


Tgt Ion:117 Resp: 123367

Ion	Ratio	Lower	Upper
117	100		
82	58.3	47.4	71.2
119	31.6	26.6	39.8

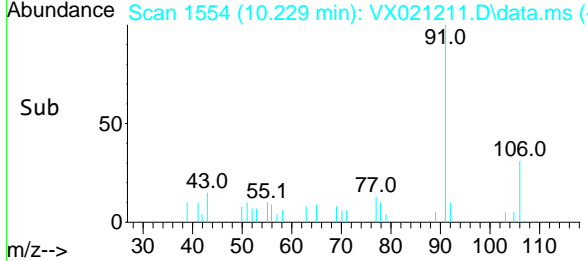
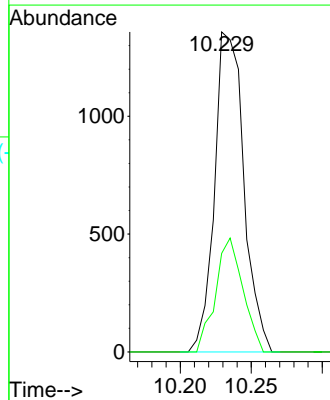


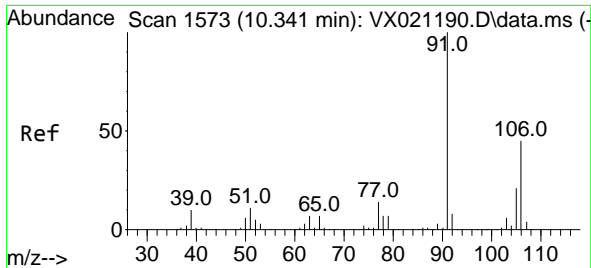
#67  
 Ethyl Benzene  
 Concen: 0.41 ug/l  
 RT: 10.229 min Scan# 1554  
 Delta R.T. -0.006 min  
 Lab File: VX021211.D  
 Acq: 15 Mar 2021 19:41



Tgt Ion: 91 Resp: 1945

Ion	Ratio	Lower	Upper
91	100		
106	30.8	24.6	37.0

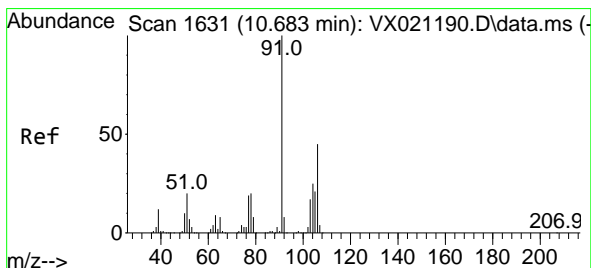
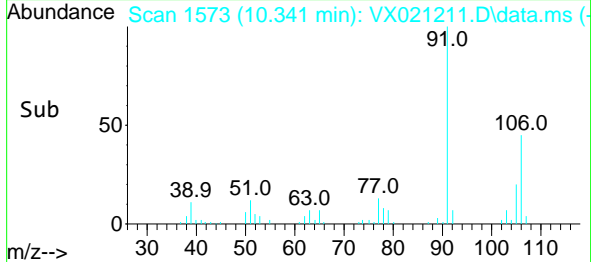
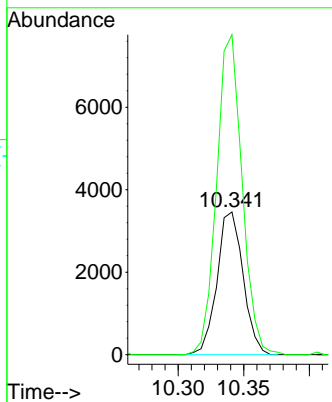
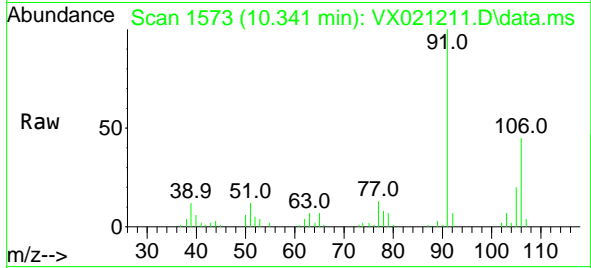




#68  
 m/p-Xylenes  
 Concen: 2.82 ug/l  
 RT: 10.341 min Scan# 1573  
 Delta R.T. -0.000 min  
 Lab File: VX021211.D  
 Acq: 15 Mar 2021 19:41

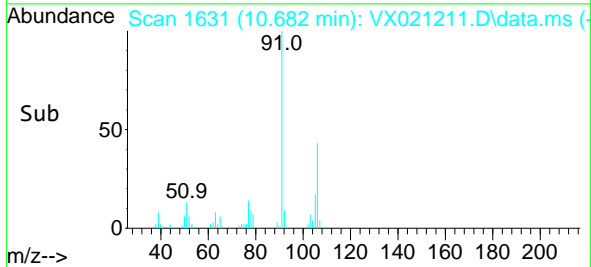
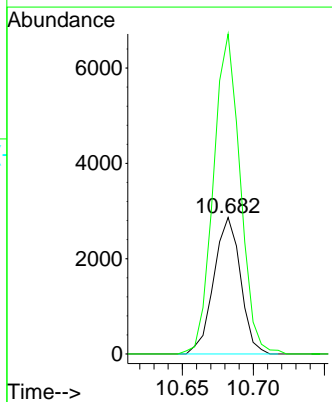
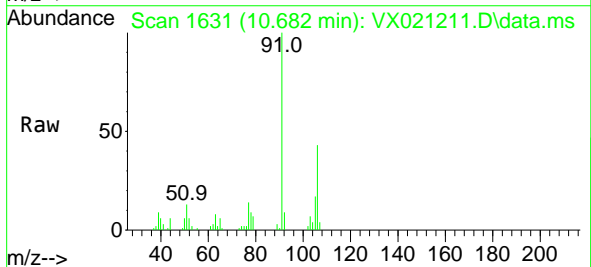
Instrument :  
 MSVOA\_X  
 ClientSampled :

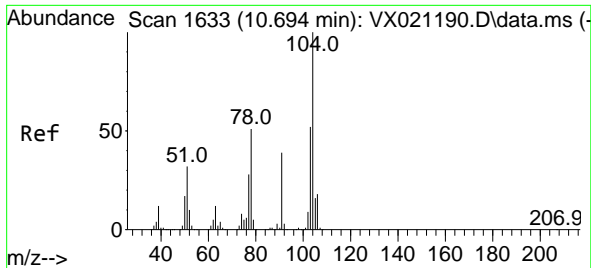
Tgt Ion:106 Resp: 4793  
 Ion Ratio Lower Upper  
 106 100  
 91 218.6 162.8 244.2



#69  
 o-Xylene  
 Concen: 2.28 ug/l  
 RT: 10.682 min Scan# 1631  
 Delta R.T. -0.001 min  
 Lab File: VX021211.D  
 Acq: 15 Mar 2021 19:41

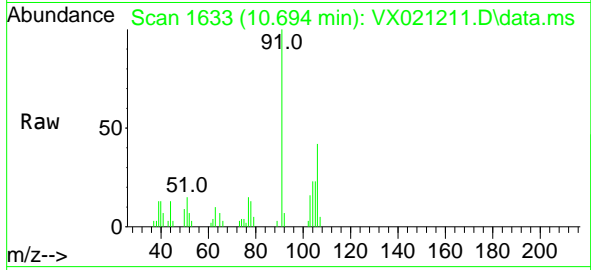
Tgt Ion:106 Resp: 3757  
 Ion Ratio Lower Upper  
 106 100  
 91 234.0 108.1 324.2



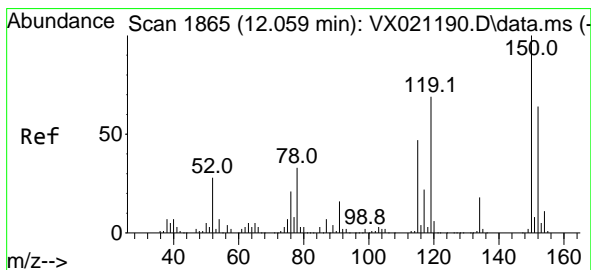
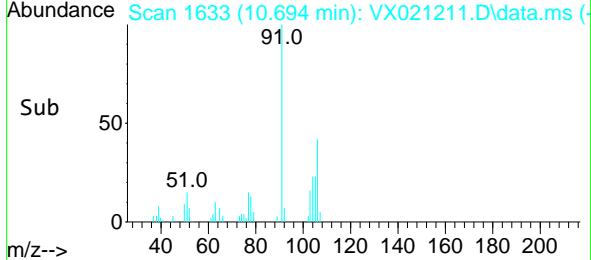
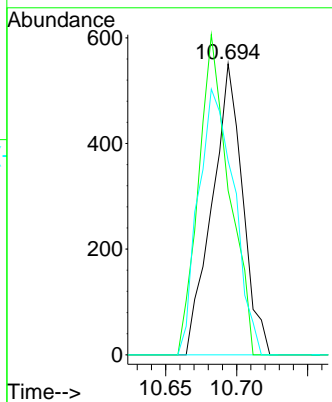


#70  
 Styrene  
 Concen: 0.29 ug/l  
 RT: 10.694 min Scan# 1633  
 Delta R.T. -0.000 min  
 Lab File: VX021211.D  
 Acq: 15 Mar 2021 19:41

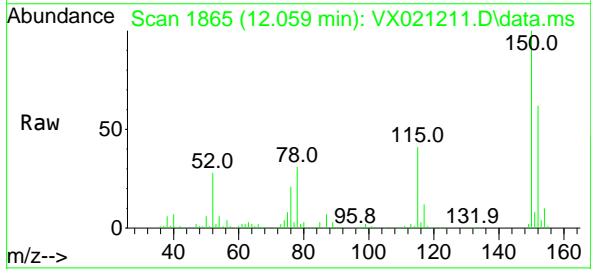
Instrument :  
 MSVOA\_X  
 ClientSampled :



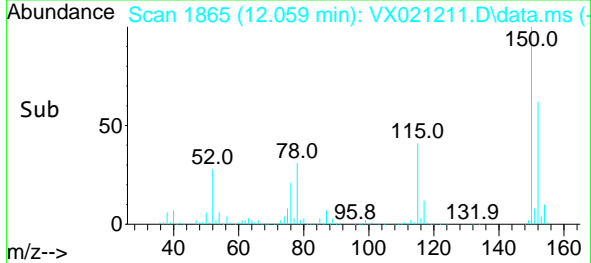
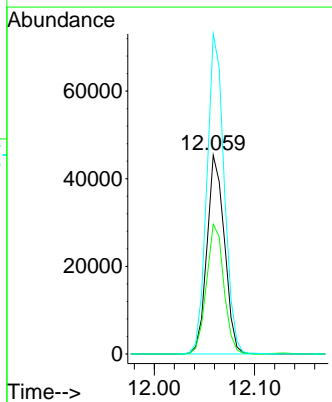
Tgt Ion	Resp	Lower	Upper
104	100		
78	109.8	40.0	60.0#
103	106.4	43.4	65.0#

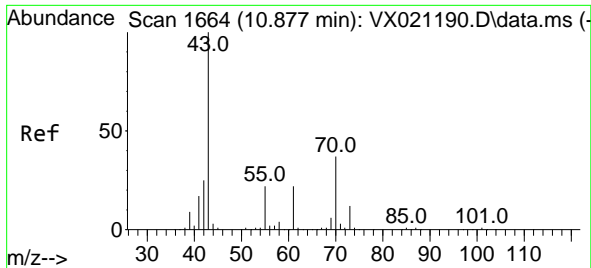


#72  
 1,4-Dichlorobenzene-d4  
 Concen: 50.00 ug/l  
 RT: 12.059 min Scan# 1865  
 Delta R.T. -0.006 min  
 Lab File: VX021211.D  
 Acq: 15 Mar 2021 19:41



Tgt Ion	Resp	Lower	Upper
152	100		
115	64.9	41.1	123.3
150	159.6	0.0	349.0



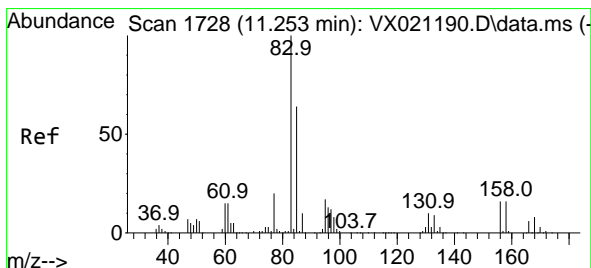
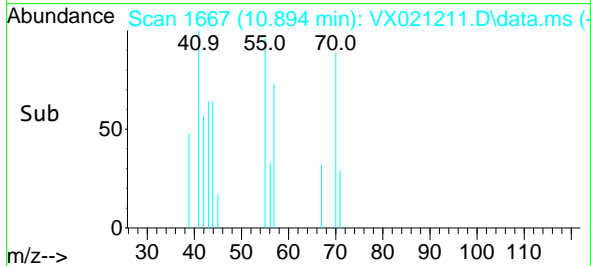
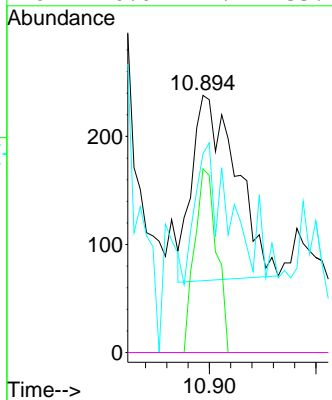
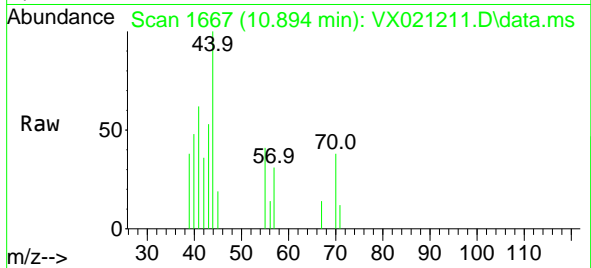


#74  
 N-amy1 acetate  
 Concen: 0.24 ug/l  
 RT: 10.894 min Scan# 1667  
 Delta R.T. 0.017 min  
 Lab File: VX021211.D  
 Acq: 15 Mar 2021 19:41

Instrument :  
 MSVOA\_X  
 ClientSampled :

Tgt Ion: 43 Resp: 494

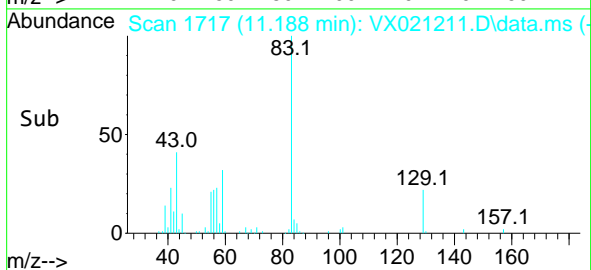
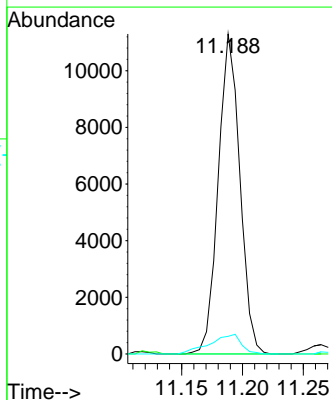
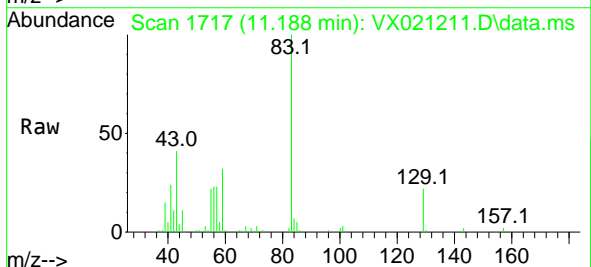
Ion	Ratio	Lower	Upper
43	100		
70	49.6	39.0	58.6
55	60.5	21.5	32.3#
61	0.0	22.1	33.1#

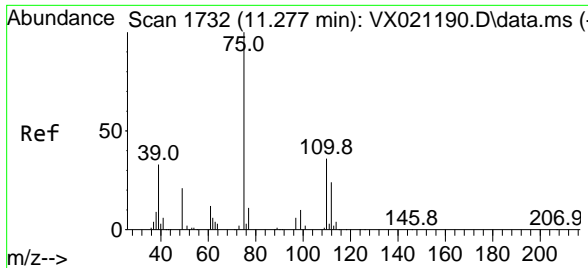


#75  
 1,1,2,2-Tetrachloroethane  
 Concen: 10.61 ug/l  
 RT: 11.188 min Scan# 1717  
 Delta R.T. -0.065 min  
 Lab File: VX021211.D  
 Acq: 15 Mar 2021 19:41

Tgt Ion: 83 Resp: 13938

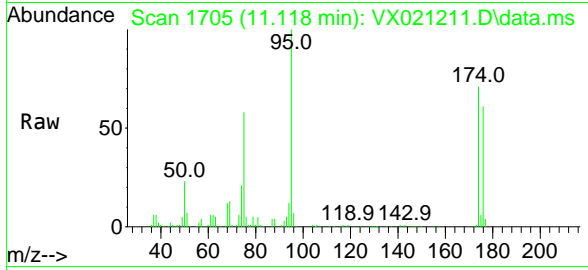
Ion	Ratio	Lower	Upper
83	100		
131	0.0	5.1	15.2#
85	8.9	31.8	95.4#



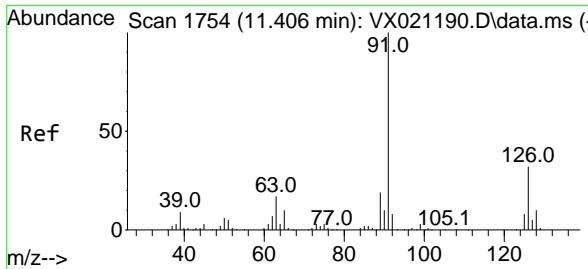
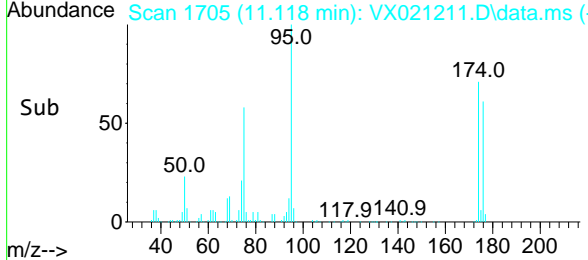
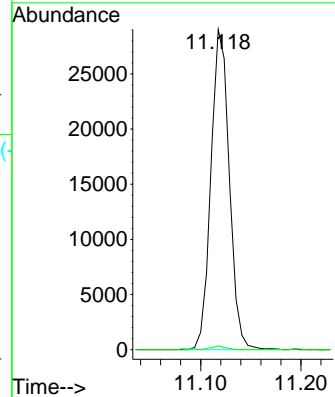


#76  
 1,2,3-Trichloropropane  
 Concen: 27.17 ug/l  
 RT: 11.118 min Scan# 1705  
 Delta R.T. -0.159 min  
 Lab File: VX021211.D  
 Acq: 15 Mar 2021 19:41

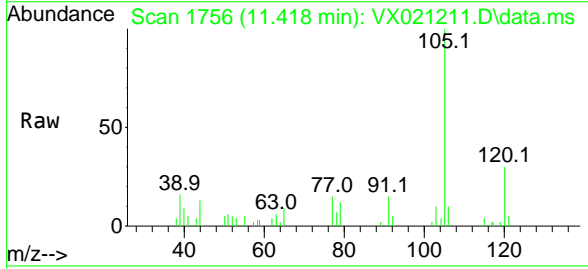
Instrument :  
 MSVOA\_X  
 ClientSampled :



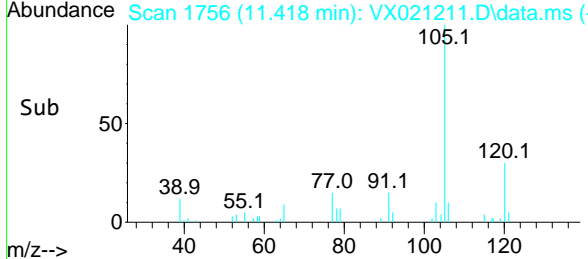
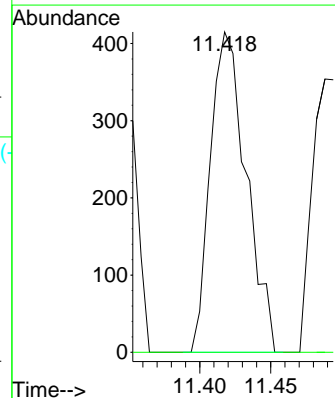
Tgt Ion: 75 Resp: 36972  
 Ion Ratio Lower Upper  
 75 100  
 77 0.9 19.1 57.5#

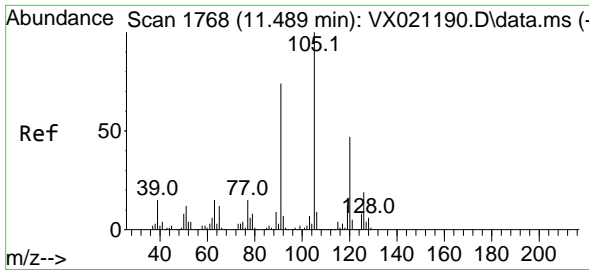


#79  
 2-Chlorotoluene  
 Concen: 0.25 ug/l  
 RT: 11.418 min Scan# 1756  
 Delta R.T. 0.017 min  
 Lab File: VX021211.D  
 Acq: 15 Mar 2021 19:41



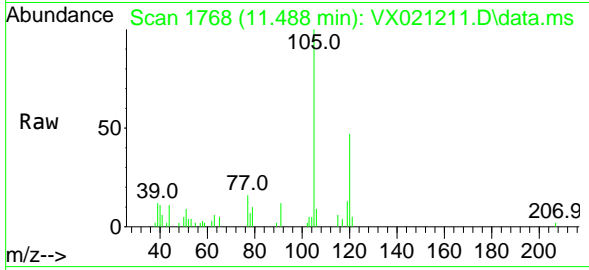
Tgt Ion: 91 Resp: 728  
 Ion Ratio Lower Upper  
 91 100  
 126 0.0 16.6 49.8#



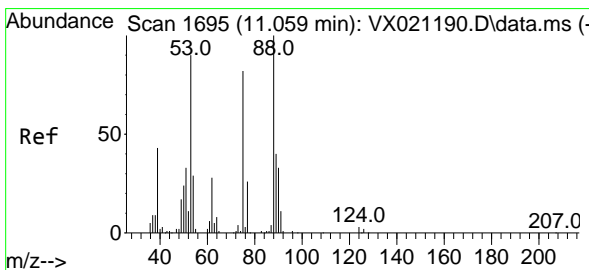
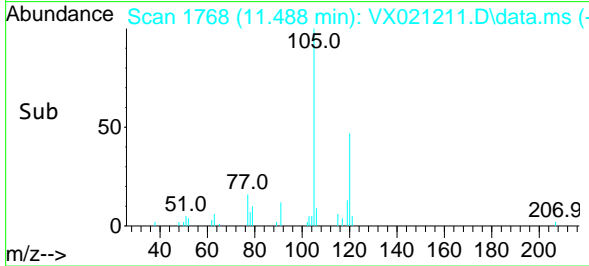
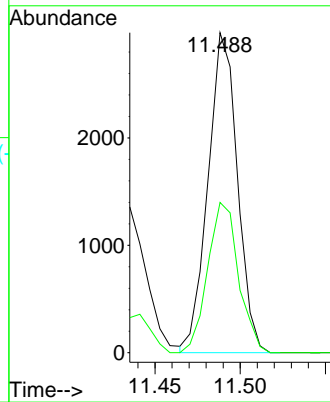


#80  
 1,3,5-Trimethylbenzene  
 Concen: 1.00 ug/l  
 RT: 11.488 min Scan# 1768  
 Delta R.T. -0.000 min  
 Lab File: VX021211.D  
 Acq: 15 Mar 2021 19:41

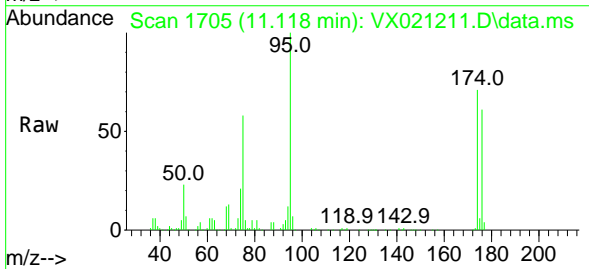
Instrument :  
 MSVOA\_X  
 ClientSampled :



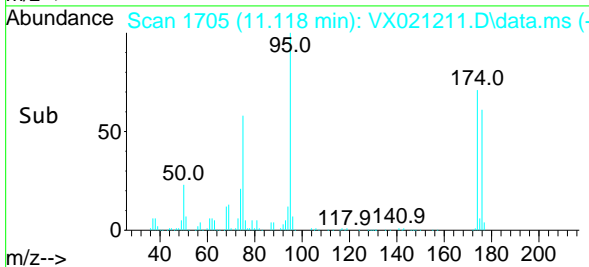
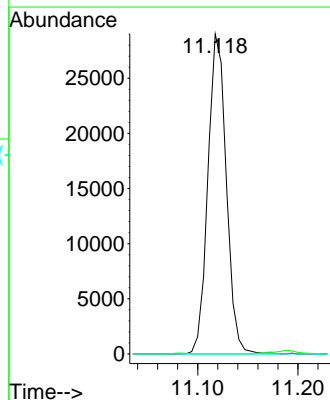
Tgt Ion:105 Resp: 3574  
 Ion Ratio Lower Upper  
 105 100  
 120 49.4 23.8 71.5

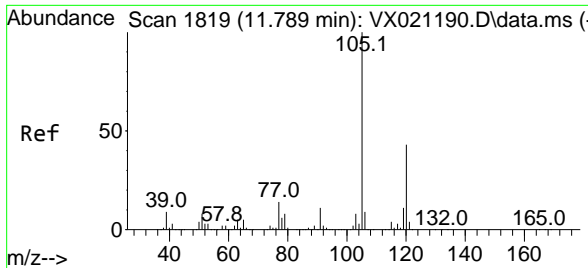


#81  
 trans-1,4-Dichloro-2-butene  
 Concen: 77.12 ug/l  
 RT: 11.118 min Scan# 1705  
 Delta R.T. 0.058 min  
 Lab File: VX021211.D  
 Acq: 15 Mar 2021 19:41



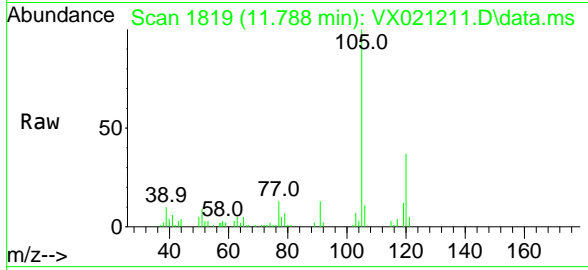
Tgt Ion: 75 Resp: 36972  
 Ion Ratio Lower Upper  
 75 100  
 53 0.0 74.5 111.7#  
 89 0.0 37.9 56.9#



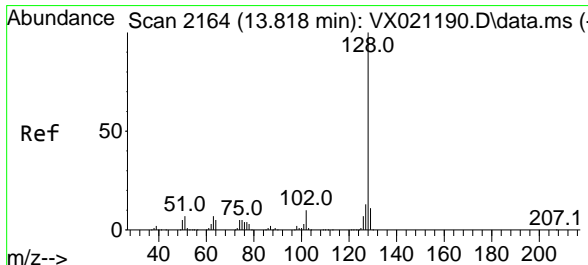
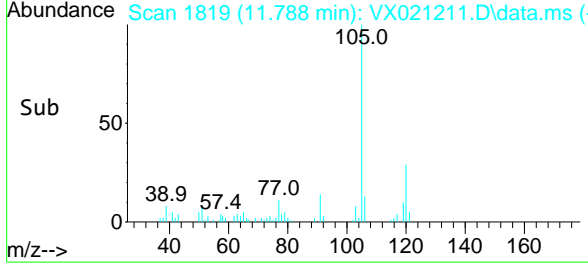
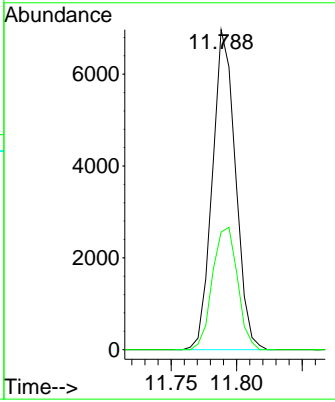


#84  
 1,2,4-Trimethylbenzene  
 Concen: 2.37 ug/l  
 RT: 11.788 min Scan# 1819  
 Delta R.T. -0.000 min  
 Lab File: VX021211.D  
 Acq: 15 Mar 2021 19:41

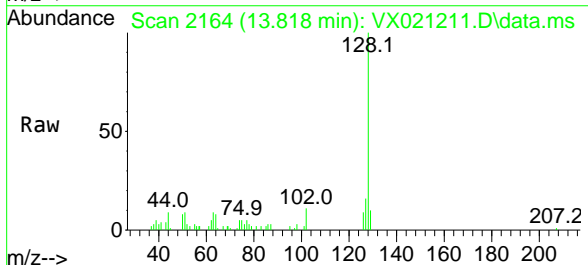
Instrument :  
 MSVOA\_X  
 ClientSampled :



Tgt Ion:105 Resp: 8528  
 Ion Ratio Lower Upper  
 105 100  
 120 41.4 22.4 67.3



#95  
 Naphthalene  
 Concen: 2.64 ug/l  
 RT: 13.818 min Scan# 2164  
 Delta R.T. -0.000 min  
 Lab File: VX021211.D  
 Acq: 15 Mar 2021 19:41



Tgt Ion:128 Resp: 4911  
 Ion Ratio Lower Upper  
 128 100  
 127 16.1 10.3 15.5#  
 129 11.5 8.8 13.2

