

Data Path : Z:\voasrv\HPCHEM1\MSVOA\_X\Data\VX031521\  
 Data File : VX021208.D  
 Acq On : 15 Mar 2021 18:31  
 Operator : JC/MD  
 Sample : M1677-01  
 Misc : 5.0mL/MSVOA\_X/WATER  
 ALS Vial : 23 Sample Multiplier: 1

Instrument :  
 MSVOA\_X  
 ClientSampleId :  
 D2470-D2800(WATER)

Integration Parameters: RTEINT.P  
 Integrator: RTE  
 Smoothing : ON Filtering: 5  
 Sampling : 1 Min Area: 3 % of largest Peak  
 Start Thrs: 0.2 Max Peaks: 100  
 Stop Thrs : 0 Peak Location: TOP

If leading or trailing edge < 100 prefer < Baseline drop else tangent >  
 Peak separation: 5

Method : Z:\voasrv\HPCHEM1\MSVOA\_X\Method\82X031521W.M  
 Title : SW846 8260

Signal : TIC: VX021208.D\data.ms

peak #	R.T. min	first scan	max scan	last scan	PK TY	peak height	corr. area	corr. % max.	% of total
1	2.423	221	227	234	rBV	19364	33346	1.46%	0.435%
2	4.635	591	603	621	rBV	379196	1063254	46.46%	13.884%
3	5.176	686	695	708	rVB	36034	107524	4.70%	1.404%
4	5.464	733	744	758	rBV	50054	143271	6.26%	1.871%
5	5.629	761	772	786	rBV2	74564	210934	9.22%	2.754%
6	6.035	829	841	852	rBV	58141	153231	6.70%	2.001%
7	6.829	966	976	995	rBV	127886	305686	13.36%	3.992%
8	8.694	1285	1293	1301	rBV	263411	417063	18.23%	5.446%
9	10.094	1524	1531	1544	rBV	280062	386195	16.88%	5.043%
10	10.235	1550	1555	1566	rVV	424445	556262	24.31%	7.264%
11	10.341	1566	1573	1591	rVB	1707894	2288375	100.00%	29.881%
12	10.682	1625	1631	1645	rVB	1071110	1323679	57.84%	17.284%
13	11.118	1700	1705	1715	rBV	233061	308019	13.46%	4.022%
14	12.059	1859	1865	1872	rBV	283193	361431	15.79%	4.719%

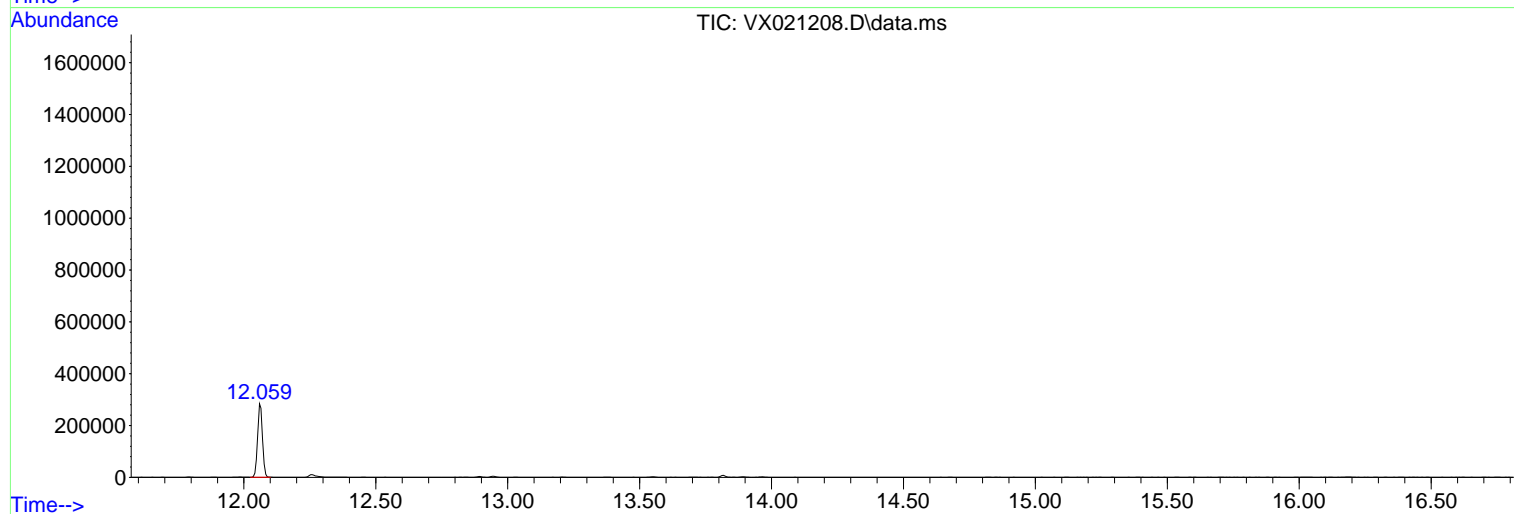
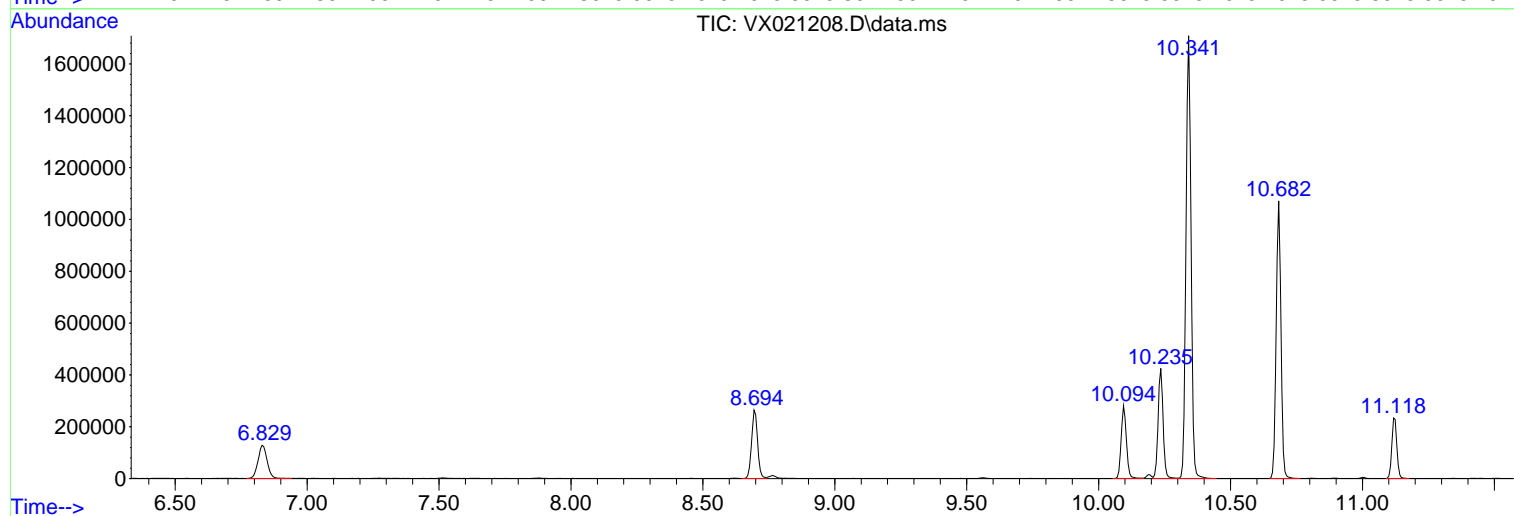
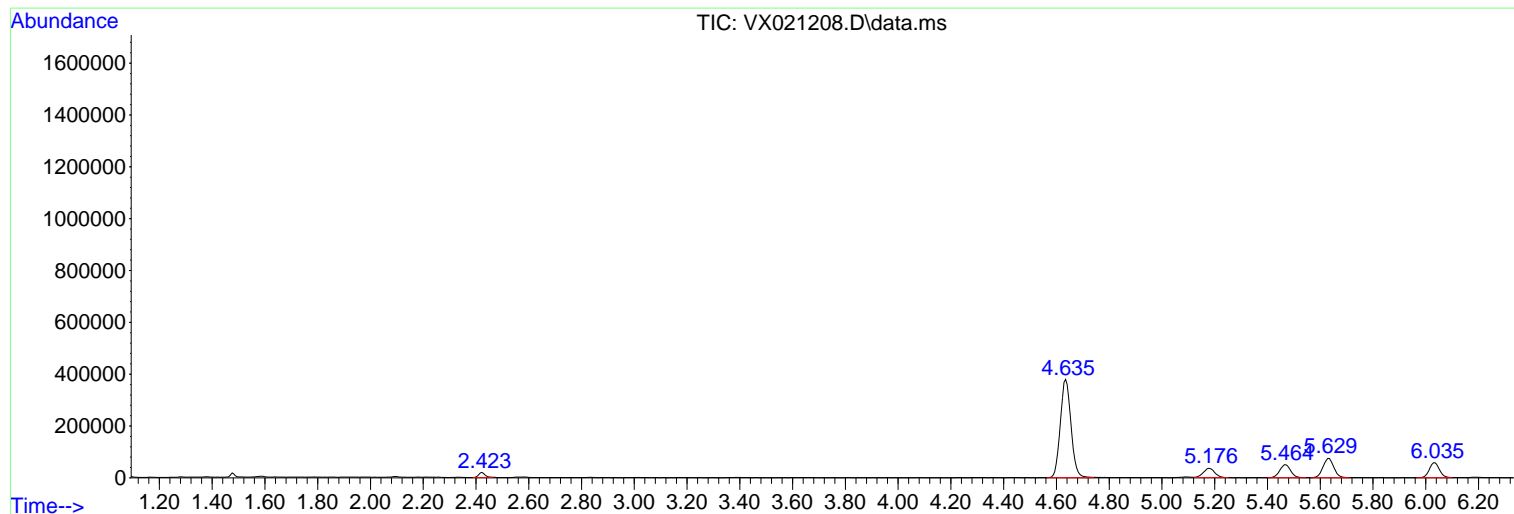
Sum of corrected areas: 7658270

Data Path : Z:\voasrv\HPCHEM1\MSVOA\_X\Data\VX031521\  
Data File : VX021208.D  
Acq On : 15 Mar 2021 18:31  
Operator : JC/MD  
Sample : M1677-01  
Misc : 5.0mL/MSVOA\_X/WATER  
ALS Vial : 23 Sample Multiplier: 1

Instrument :  
MSVOA\_X  
ClientSampleId :  
D2470-D2800(WATER)

Quant Method : Z:\voasrv\HPCHEM1\MSVOA\_X\Method\82X031521W.M  
Quant Title : SW846 8260

TIC Library : C:\DATABASE\NIST11.L  
TIC Integration Parameters: LSCINT.P



Library Search Compound Report

Data Path : Z:\voasrv\HPCHEM1\MSVOA\_X\Data\VX031521\  
Data File : VX021208.D  
Acq On : 15 Mar 2021 18:31  
Operator : JC/MD  
Sample : M1677-01  
Misc : 5.0mL/MSVOA\_X/WATER  
ALS Vial : 23 Sample Multiplier: 1

Instrument :  
MSVOA\_X  
ClientSampleId :  
D2470-D2800(WATER)

Quant Method : Z:\voasrv\HPCHEM1\MSVOA\_X\Method\82X031521W.M  
Quant Title : SW846 8260

TIC Library : C:\DATABASE\NIST11.L  
TIC Integration Parameters: LSCINT.P

No Library Search Compounds Detected

\*\*\*\*\*

Data Path : Z:\voasrv\HPCHEM1\MSVOA\_X\Data\VX031521\  
Data File : VX021208.D  
Acq On : 15 Mar 2021 18:31  
Operator : JC/MD  
Sample : M1677-01  
Misc : 5.0mL/MSVOA\_X/WATER  
ALS Vial : 23 Sample Multiplier: 1

Instrument :  
MSVOA\_X  
ClientSampleId :  
D2470-D2800(WATER)

Quant Method : Z:\voasrv\HPCHEM1\MSVOA\_X\Method\82X031521W.M  
Quant Title : SW846 8260

TIC Library : C:\DATABASE\NIST11.L  
TIC Integration Parameters: LSCINT.P

TIC Top Hit name	RT	EstConc	Units	Response	--Internal Standard--		
					#	RT	Resp Conc

---