

Data Path : Z:\voasrv\HPCHEM1\MSVOA\_X\Data\VX031522\  
 Data File : VX027452.D  
 Acq On : 15 Mar 2022 17:08  
 Operator : JC/MD  
 Sample : N1924-01  
 Misc : 5.0mL/MSVOA\_X/WATER  
 ALS Vial : 13 Sample Multiplier: 1

Instrument :  
 MSVOA\_X  
 ClientSampleId :  
 33585

Quant Time: Mar 16 04:19:52 2022  
 Quant Method : Z:\voasrv\HPCHEM1\MSVOA\_X\Method\82X030822W.M  
 Quant Title : SW846 8260  
 QLast Update : Tue Mar 08 15:54:34 2022  
 Response via : Initial Calibration

Compound	R.T.	QIon	Response	Conc	Units	Dev(Min)
Internal Standards						
1) Pentafluorobenzene	5.556	168	384910	50.000	ug/l	0.00
34) 1,4-Difluorobenzene	6.763	114	590039	50.000	ug/l	0.00
63) Chlorobenzene-d5	10.055	117	549988	50.000	ug/l	0.00
72) 1,4-Dichlorobenzene-d4	12.024	152	259517	50.000	ug/l	0.00
System Monitoring Compounds						
33) 1,2-Dichloroethane-d4	5.964	65	212188	47.272	ug/l	0.00
Spiked Amount	50.000	Range 61 - 141	Recovery	=	94.540%	
35) Dibromofluoromethane	5.391	113	195970	51.472	ug/l	0.00
Spiked Amount	50.000	Range 69 - 133	Recovery	=	102.940%	
50) Toluene-d8	8.653	98	698053	48.565	ug/l	0.00
Spiked Amount	50.000	Range 65 - 126	Recovery	=	97.140%	
62) 4-Bromofluorobenzene	11.085	95	264086	48.207	ug/l	0.00
Spiked Amount	50.000	Range 58 - 135	Recovery	=	96.420%	
Target Compounds						
5) Bromomethane	1.605	94	1061	Below Cal	#	74
6) Chloroethane	1.715	64	213	0.534	ug/l #	72
11) Tert butyl alcohol	2.965	59	33118	37.636	ug/l	97
13) Acrolein	2.233	56	1201	1.947	ug/l #	40
16) Acetone	2.380	43	675783	390.084	ug/l	96
17) Carbon Disulfide	2.514	76	4661	0.460	ug/l	98
18) Methyl Acetate	2.709	43	12729	2.580	ug/l	97
19) Methyl tert-butyl Ether	3.117	73	2488	0.201	ug/l #	85
25) 2-Butanone	4.562	43	68568	22.177	ug/l	96
29) Tetrahydrofuran	5.019	42	1724	0.843	ug/l #	87
31) Cyclohexane	5.470	56	2018	0.321	ug/l #	76
36) 1,1-Dichloropropene	5.556	75	26474	5.008	ug/l #	49
37) Ethyl Acetate	4.562	43	68568	12.306	ug/l #	65
38) Carbon Tetrachloride	5.562	117	36469	6.672	ug/l #	15
39) Methylcyclohexane	7.391	83	1915	0.287	ug/l	96
40) Benzene	6.044	78	2212577	137.427	ug/l	99
42) 1,2-Dichloroethane	6.044	62	18789	3.572	ug/l #	73
43) Isopropyl Acetate	6.354	43	2132	0.254	ug/l #	56
49) 1,4-Dioxane	7.671	88	1709	15.625	ug/l #	63
51) 4-Methyl-2-Pentanone	8.580	43	16773	2.983	ug/l	93
52) Toluene	8.720	92	1795740	174.959	ug/l	98
53) t-1,3-Dichloropropene	8.720	75	20719	3.810	ug/l #	1
56) Ethyl methacrylate	9.189	69	2365	0.374	ug/l #	32
59) 2-Hexanone	9.433	43	6678	1.537	ug/l	93
67) Ethyl Benzene	10.195	91	224088	11.230	ug/l	99
68) m/p-Xylenes	10.305	106	537164	68.629	ug/l	100
69) o-Xylene	10.646	106	319585	41.356	ug/l	99
70) Styrene	10.659	104	272521	21.246	ug/l	88
73) Isopropylbenzene	10.963	105	7748	0.408	ug/l	99
74) N-amy acetate	10.896	43	1953	0.282	ug/l #	48
76) 1,2,3-Trichloropropane	11.079	75	128816	22.624	ug/l #	39
78) n-propylbenzene	11.305	91	17896	0.838	ug/l	98
80) 1,3,5-Trimethylbenzene	11.451	105	58172	3.575	ug/l	99
81) trans-1,4-Dichloro-2-b...	11.079	75	128816	73.167	ug/l #	15
82) 4-Chlorotoluene	11.451	91	6621	0.439	ug/l #	45
83) tert-Butylbenzene	11.756	119	25451	1.565	ug/l #	53

Data Path : Z:\voasrv\HPCHEM1\MSVOA\_X\Data\VX031522\  
 Data File : VX027452.D  
 Acq On : 15 Mar 2022 17:08  
 Operator : JC/MD  
 Sample : N1924-01  
 Misc : 5.0mL/MSVOA\_X/WATER  
 ALS Vial : 13 Sample Multiplier: 1

Instrument :  
 MSVOA\_X  
 ClientSampleId :  
 33585

Quant Time: Mar 16 04:19:52 2022  
 Quant Method : Z:\voasrv\HPCHEM1\MSVOA\_X\Method\82X030822W.M  
 Quant Title : SW846 8260  
 QLast Update : Tue Mar 08 15:54:34 2022  
 Response via : Initial Calibration

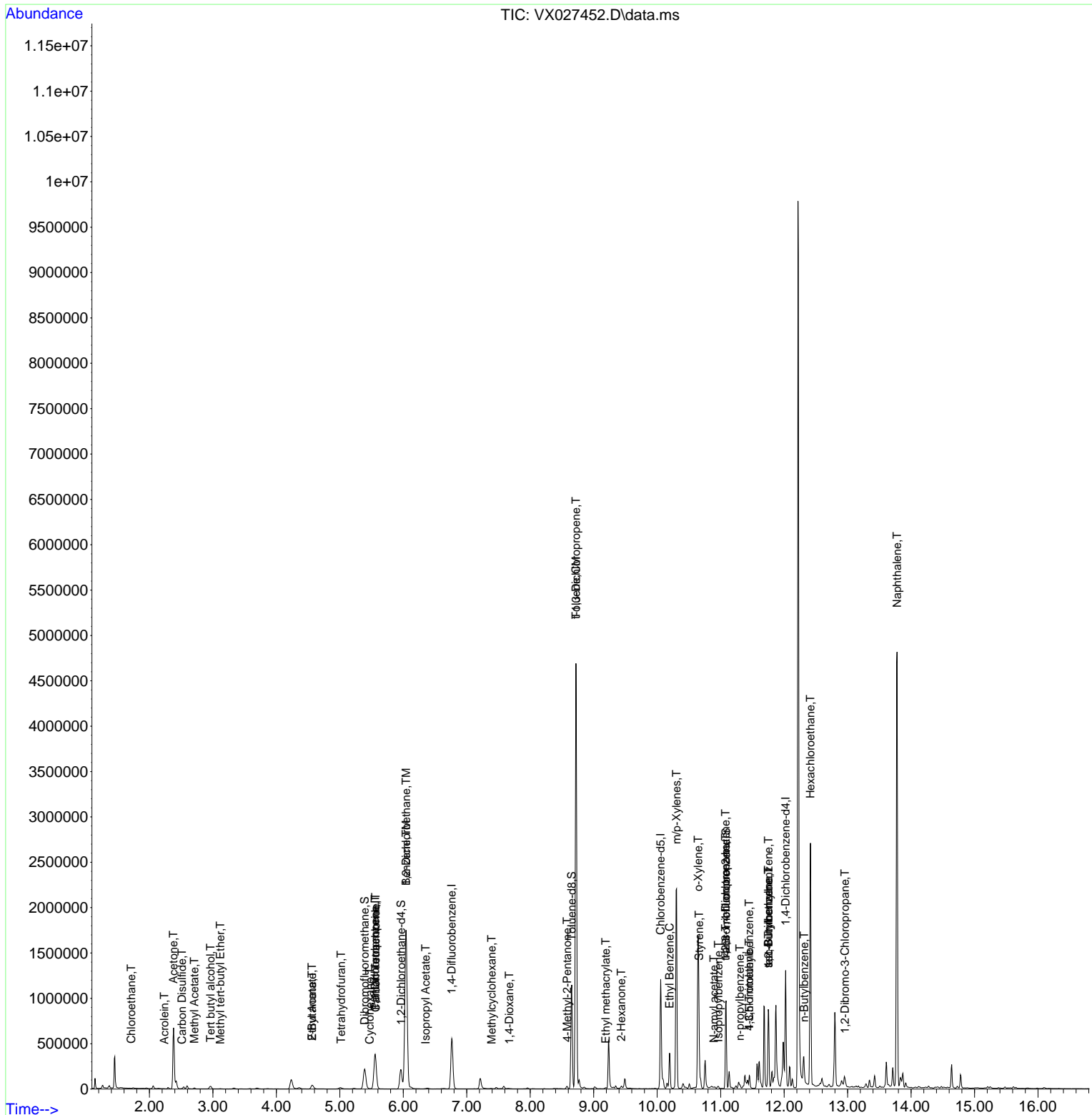
Compound	R.T.	QIon	Response	Conc	Units	Dev(Min)
84) 1,2,4-Trimethylbenzene	11.756	105	323436	20.041	ug/l	75
85) sec-Butylbenzene	11.756	105	323436	16.487	ug/l #	56
89) n-Butylbenzene	12.317	91	5272	0.379	ug/l #	32
90) Hexachloroethane	12.414	117	101225	39.103	ug/l #	10
92) 1,2-Dibromo-3-Chloropr...	12.957	75	1219	0.892	ug/l #	1
95) Naphthalene	13.780	128	3064709	156.761	ug/l	99

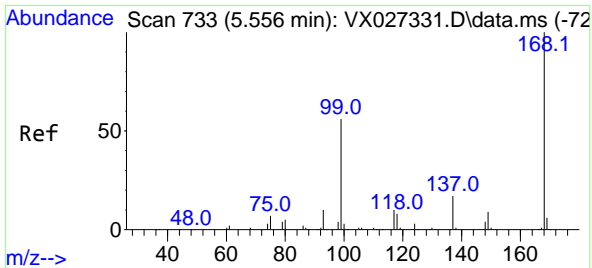
(#) = qualifier out of range (m) = manual integration (+) = signals summed

Data Path : Z:\voasrv\HPCHEM1\MSVOA\_X\Data\VX031522\  
 Data File : VX027452.D  
 Acq On : 15 Mar 2022 17:08  
 Operator : JC/MD  
 Sample : N1924-01  
 Misc : 5.0mL/MSVOA\_X/WATER  
 ALS Vial : 13 Sample Multiplier: 1

Instrument :  
 MSVOA\_X  
 ClientSampleId :  
 33585

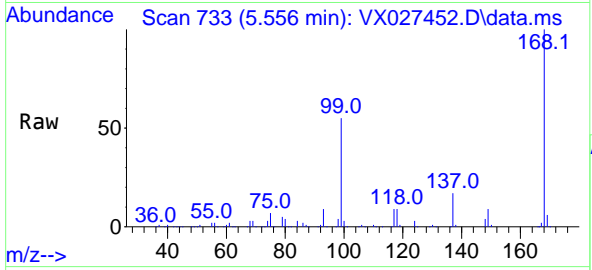
Quant Time: Mar 16 04:19:52 2022  
 Quant Method : Z:\voasrv\HPCHEM1\MSVOA\_X\Method\82X030822W.M  
 Quant Title : SW846 8260  
 QLast Update : Tue Mar 08 15:54:34 2022  
 Response via : Initial Calibration



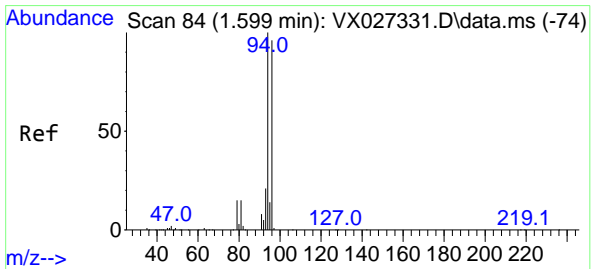
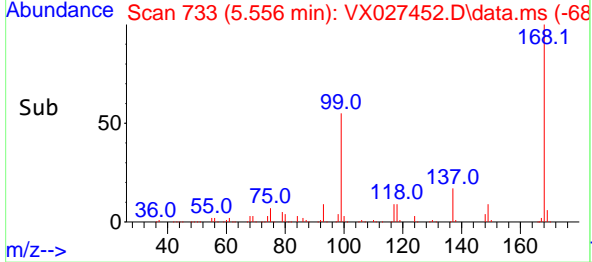
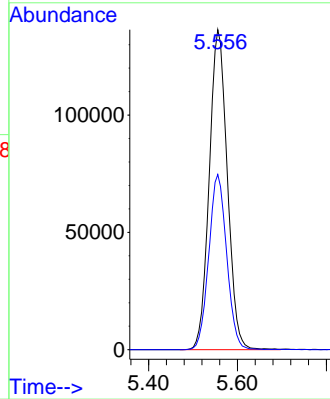


#1  
 Pentafluorobenzene  
 Concen: 50.000 ug/l  
 RT: 5.556 min Scan# 71  
 Delta R.T. -0.000 min  
 Lab File: VX027452.D  
 Acq: 15 Mar 2022 17:08

Instrument : MSVOA\_X  
 ClientSampleId : 33585

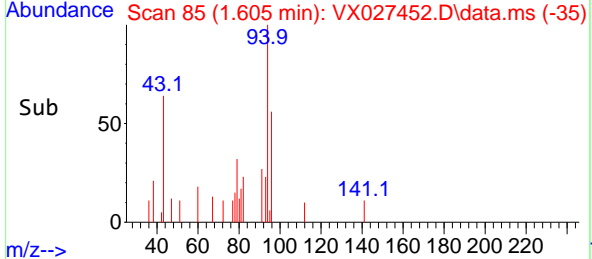
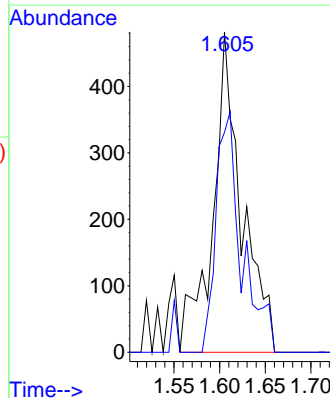
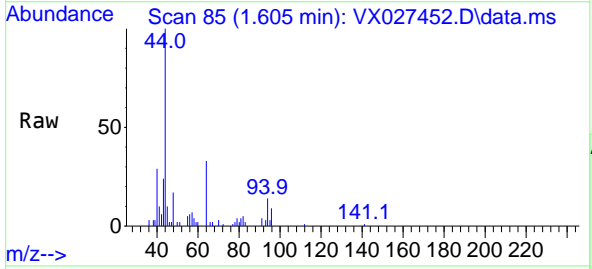


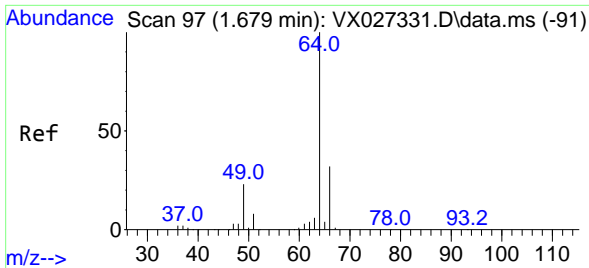
Tgt Ion:168 Resp: 384910  
 Ion Ratio Lower Upper  
 168 100  
 99 54.8 41.7 62.5



#5  
 Bromomethane  
 Concen: Below Cal  
 RT: 1.605 min Scan# 85  
 Delta R.T. 0.006 min  
 Lab File: VX027452.D  
 Acq: 15 Mar 2022 17:08

Tgt Ion: 94 Resp: 1061  
 Ion Ratio Lower Upper  
 94 100  
 96 68.7 75.3 112.9#

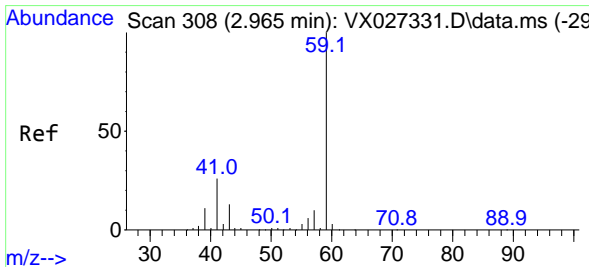
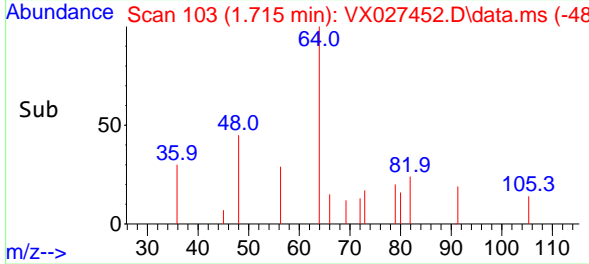
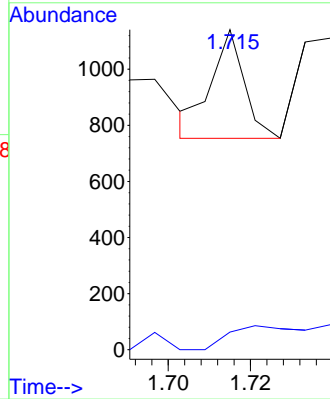
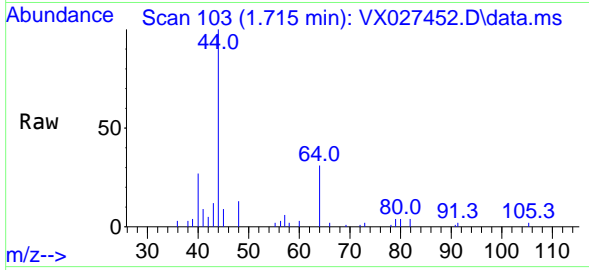




#6  
 Chloroethane  
 Concen: 0.534 ug/l  
 RT: 1.715 min Scan# 103  
 Delta R.T. 0.036 min  
 Lab File: VX027452.D  
 Acq: 15 Mar 2022 17:08

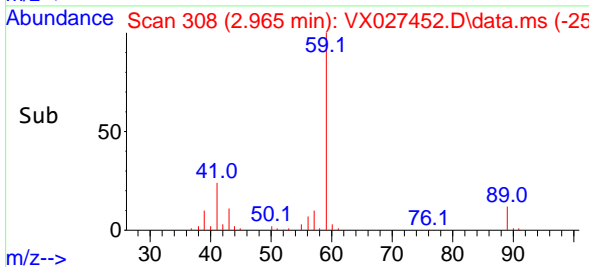
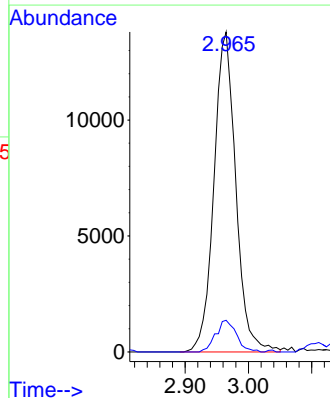
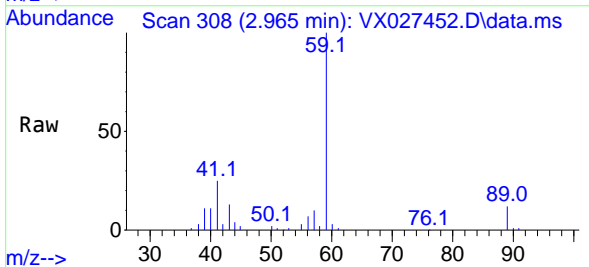
Instrument : MSVOA\_X  
 ClientSampleId : 33585

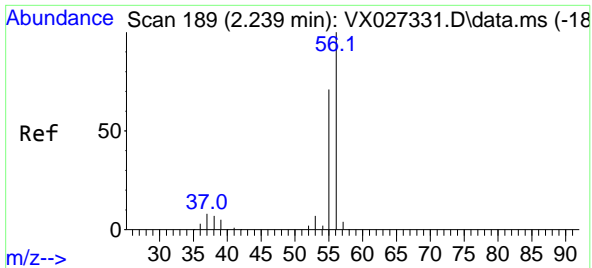
Tgt Ion: 64 Resp: 213  
 Ion Ratio Lower Upper  
 64 100  
 66 16.3 25.3 37.9#



#11  
 Tert butyl alcohol  
 Concen: 37.636 ug/l  
 RT: 2.965 min Scan# 308  
 Delta R.T. -0.000 min  
 Lab File: VX027452.D  
 Acq: 15 Mar 2022 17:08

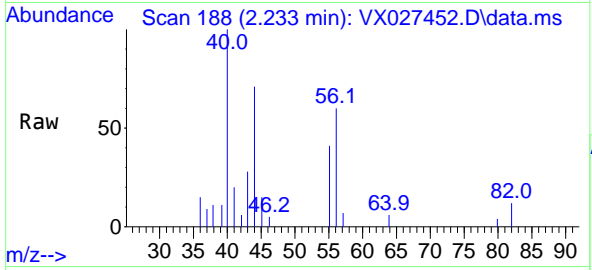
Tgt Ion: 59 Resp: 33118  
 Ion Ratio Lower Upper  
 59 100  
 57 9.4 8.3 12.5



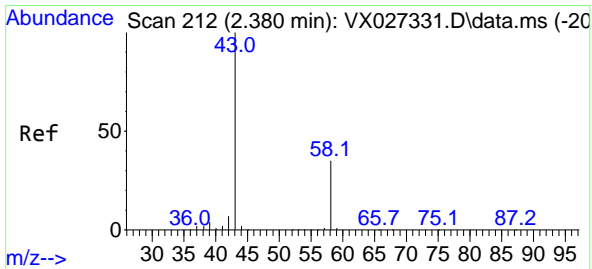
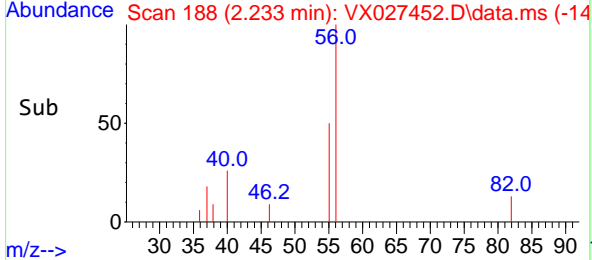
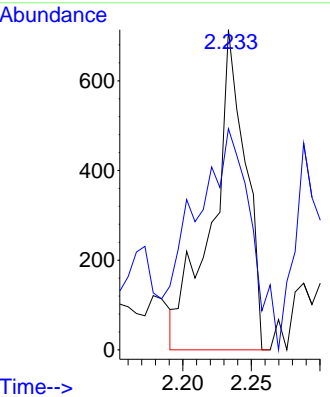


#13  
 Acrolein  
 Concen: 1.947 ug/l  
 RT: 2.233 min Scan# 11  
 Delta R.T. -0.006 min  
 Lab File: VX027452.D  
 Acq: 15 Mar 2022 17:08

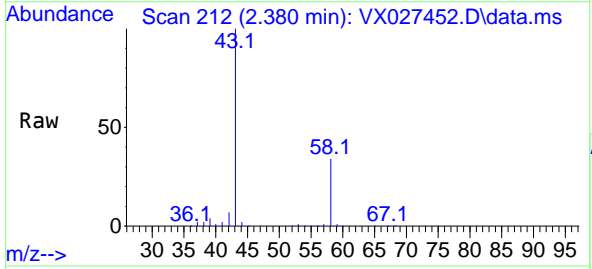
Instrument : MSVOA\_X  
 ClientSampleId : 33585



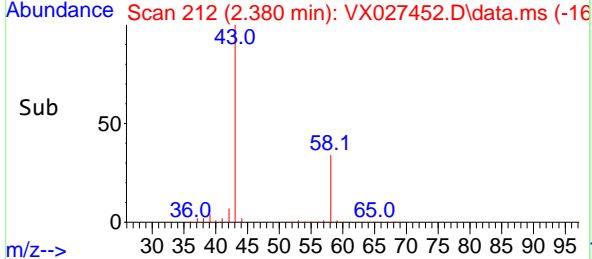
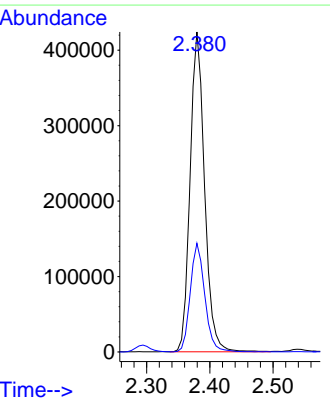
Tgt Ion: 56 Resp: 1201  
 Ion Ratio Lower Upper  
 56 100  
 55 117.7 55.0 82.6#

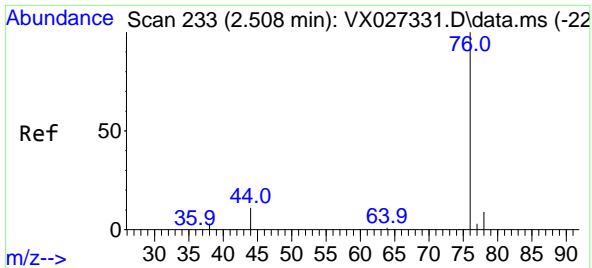


#16  
 Acetone  
 Concen: 390.084 ug/l  
 RT: 2.380 min Scan# 212  
 Delta R.T. -0.000 min  
 Lab File: VX027452.D  
 Acq: 15 Mar 2022 17:08



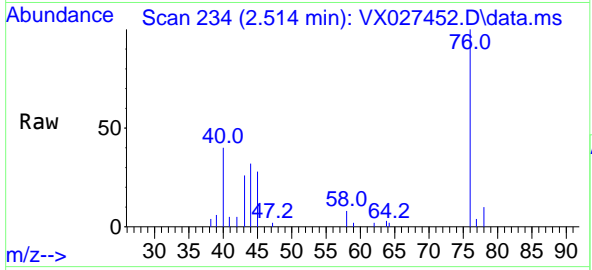
Tgt Ion: 43 Resp: 675783  
 Ion Ratio Lower Upper  
 43 100  
 58 33.9 28.8 43.2



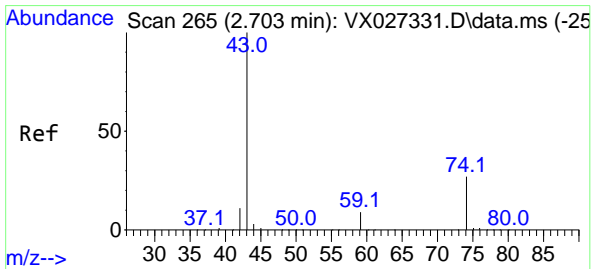
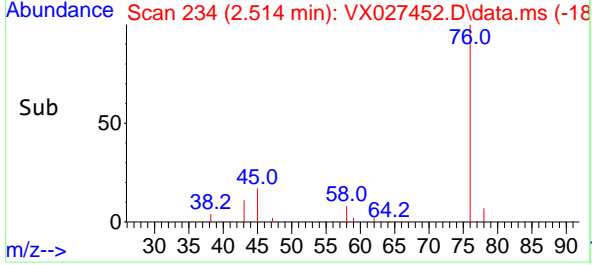
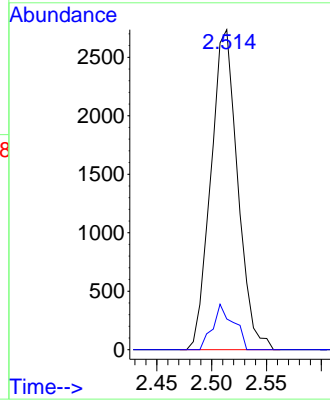


#17  
 Carbon Disulfide  
 Concen: 0.460 ug/l  
 RT: 2.514 min Scan# 21  
 Delta R.T. 0.006 min  
 Lab File: VX027452.D  
 Acq: 15 Mar 2022 17:08

Instrument :  
 MSVOA\_X  
 ClientSampleId :  
 33585

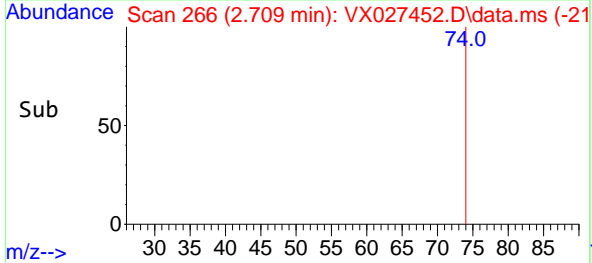
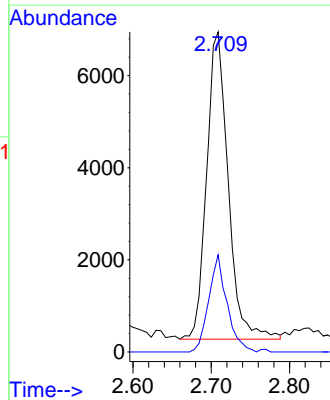
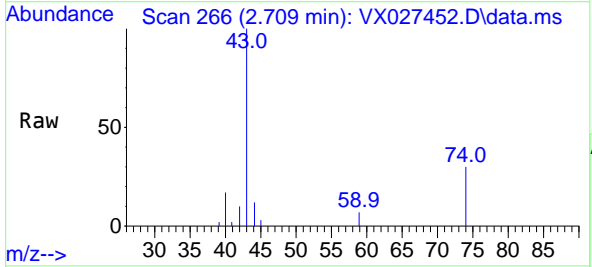


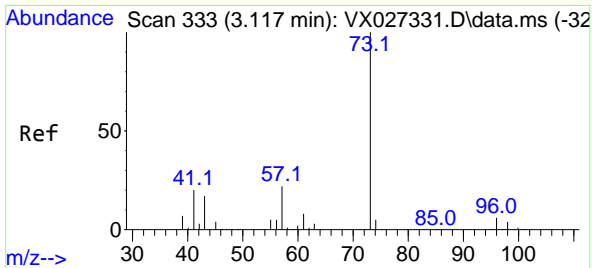
Tgt Ion: 76 Resp: 4661  
 Ion Ratio Lower Upper  
 76 100  
 78 9.6 7.2 10.8



#18  
 Methyl Acetate  
 Concen: 2.580 ug/l  
 RT: 2.709 min Scan# 266  
 Delta R.T. 0.006 min  
 Lab File: VX027452.D  
 Acq: 15 Mar 2022 17:08

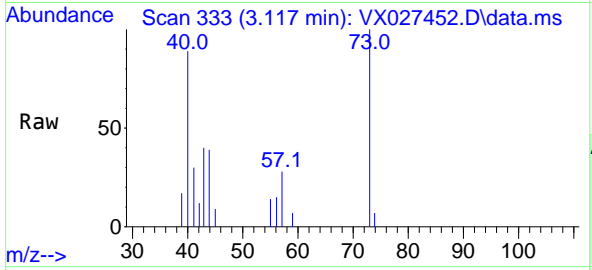
Tgt Ion: 43 Resp: 12729  
 Ion Ratio Lower Upper  
 43 100  
 74 26.8 22.8 34.2



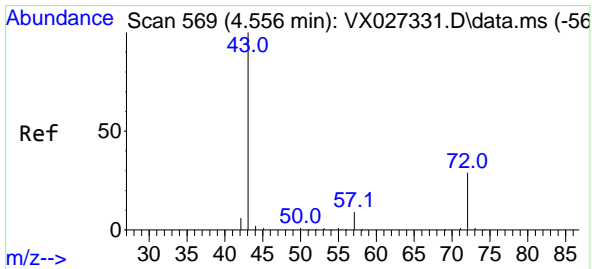
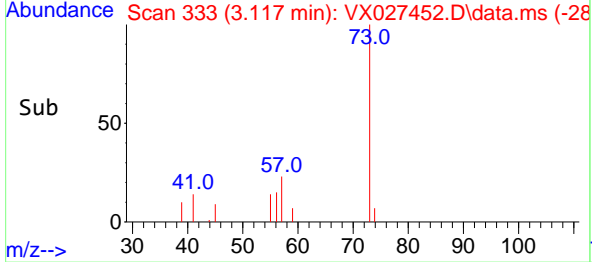
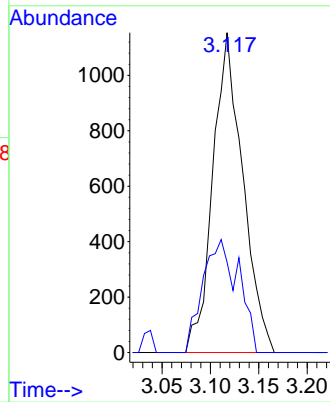


#19  
 Methyl tert-butyl Ether  
 Concen: 0.201 ug/l  
 RT: 3.117 min Scan# 31  
 Delta R.T. 0.000 min  
 Lab File: VX027452.D  
 Acq: 15 Mar 2022 17:08

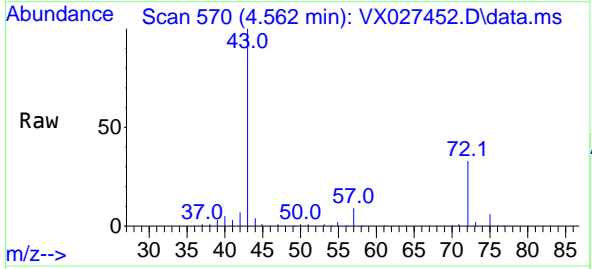
Instrument : MSVOA\_X  
 ClientSampleId : 33585



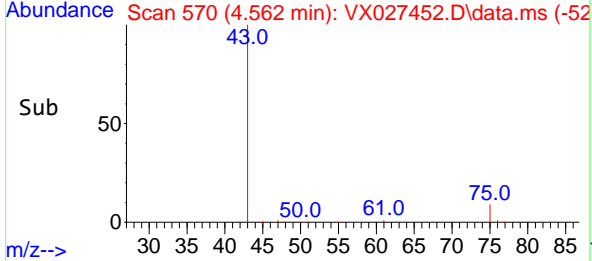
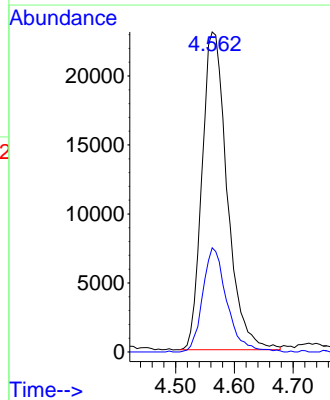
Tgt Ion: 73 Resp: 2488  
 Ion Ratio Lower Upper  
 73 100  
 57 28.2 16.8 25.2#



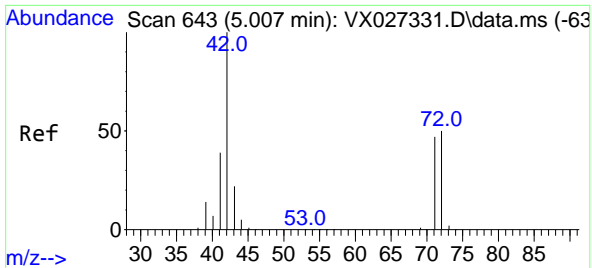
#25  
 2-Butanone  
 Concen: 22.177 ug/l  
 RT: 4.562 min Scan# 570  
 Delta R.T. 0.006 min  
 Lab File: VX027452.D  
 Acq: 15 Mar 2022 17:08



Tgt Ion: 43 Resp: 68568  
 Ion Ratio Lower Upper  
 43 100  
 72 32.8 24.4 36.6

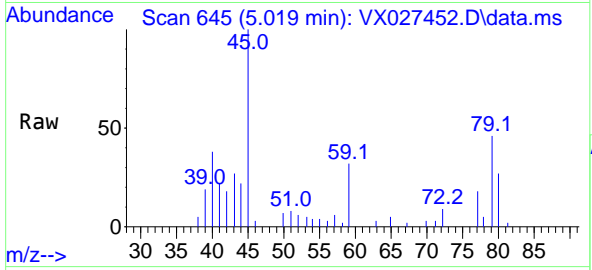




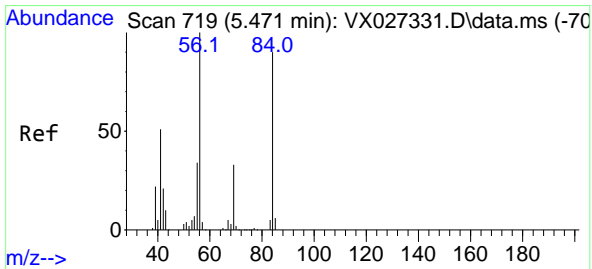
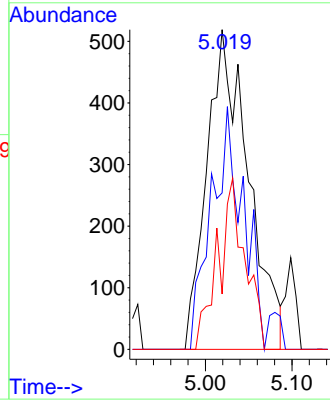
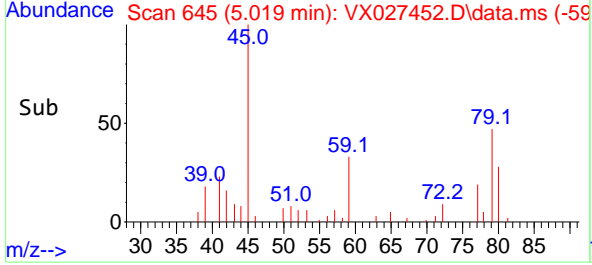


#29  
 Tetrahydrofuran  
 Concen: 0.843 ug/l  
 RT: 5.019 min Scan# 643  
 Delta R.T. 0.012 min  
 Lab File: VX027452.D  
 Acq: 15 Mar 2022 17:08

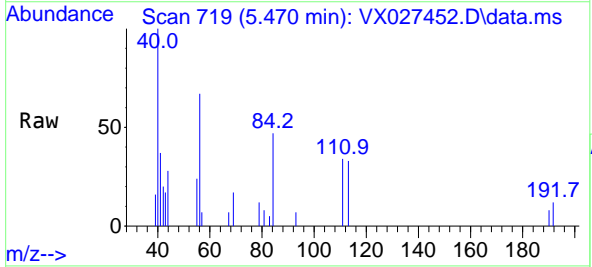
Instrument : MSVOA\_X  
 ClientSampleId : 33585



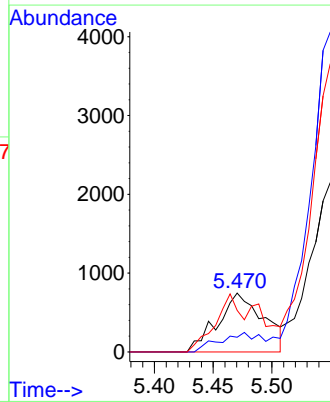
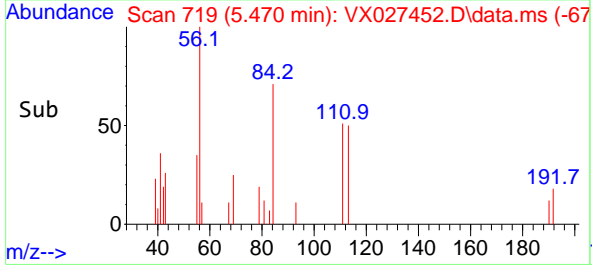
Tgt Ion: 42 Resp: 1724  
 Ion Ratio Lower Upper  
 42 100  
 72 58.6 44.1 66.1  
 71 34.7 40.5 60.7#

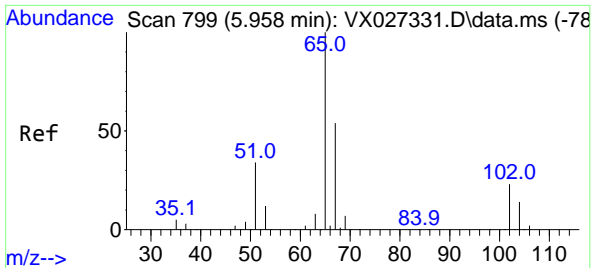


#31  
 Cyclohexane  
 Concen: 0.321 ug/l  
 RT: 5.470 min Scan# 719  
 Delta R.T. -0.001 min  
 Lab File: VX027452.D  
 Acq: 15 Mar 2022 17:08



Tgt Ion: 56 Resp: 2018  
 Ion Ratio Lower Upper  
 56 100  
 69 24.9 26.7 40.1#  
 84 70.5 77.2 115.8#

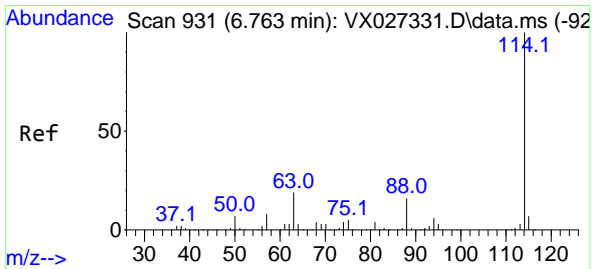
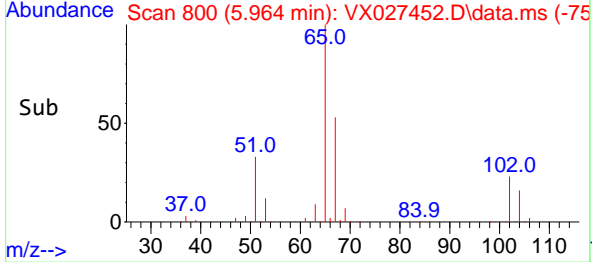
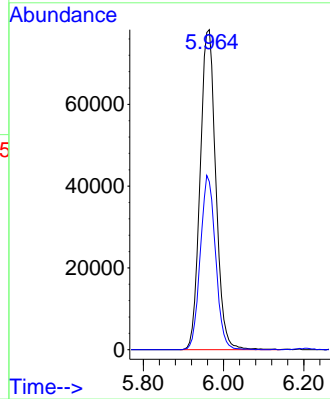
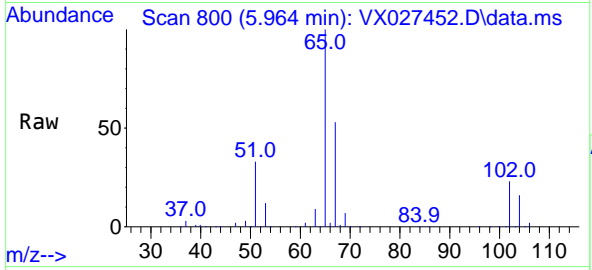




#33  
 1,2-Dichloroethane-d4  
 Concen: 47.272 ug/l  
 RT: 5.964 min Scan# 800  
 Delta R.T. 0.006 min  
 Lab File: VX027452.D  
 Acq: 15 Mar 2022 17:08

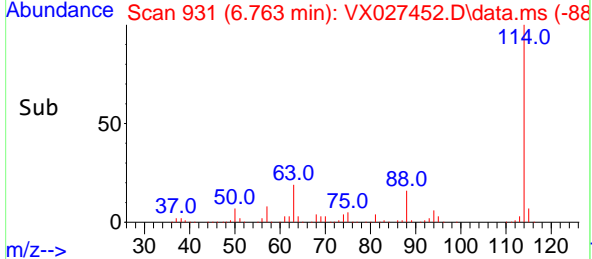
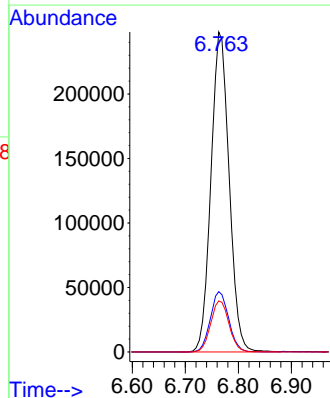
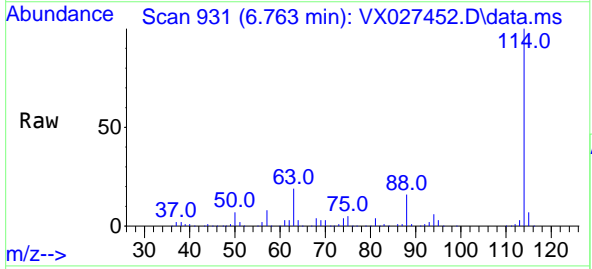
Instrument : MSVOA\_X  
 ClientSampleId : 33585

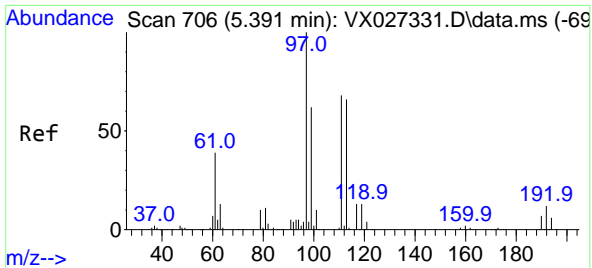
Tgt Ion: 65 Resp: 212188  
 Ion Ratio Lower Upper  
 65 100  
 67 52.9 0.0 107.4



#34  
 1,4-Difluorobenzene  
 Concen: 50.000 ug/l  
 RT: 6.763 min Scan# 931  
 Delta R.T. -0.000 min  
 Lab File: VX027452.D  
 Acq: 15 Mar 2022 17:08

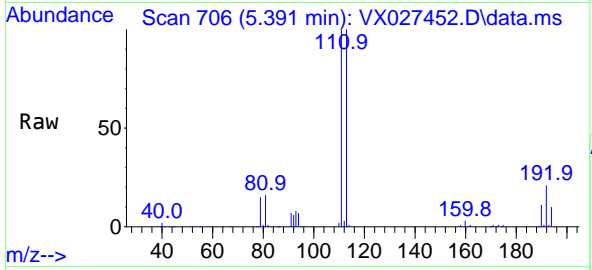
Tgt Ion: 114 Resp: 590039  
 Ion Ratio Lower Upper  
 114 100  
 63 18.9 0.0 36.8  
 88 15.9 0.0 32.4



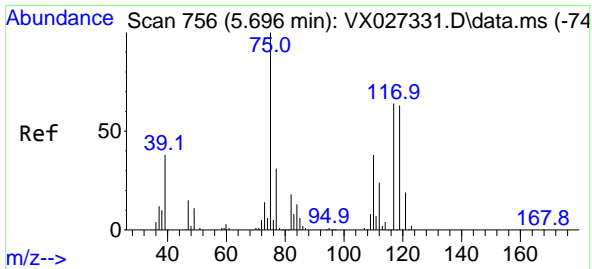
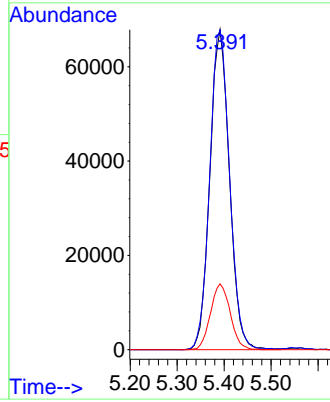
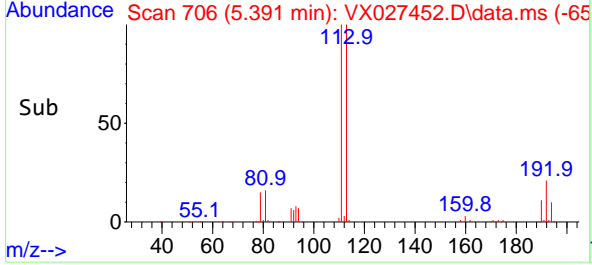


#35  
 Dibromofluoromethane  
 Concen: 51.472 ug/l  
 RT: 5.391 min Scan# 706  
 Delta R.T. 0.000 min  
 Lab File: VX027452.D  
 Acq: 15 Mar 2022 17:08

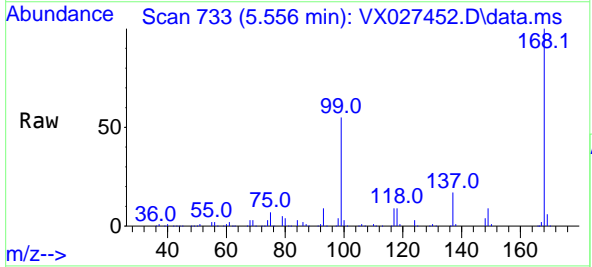
Instrument : MSVOA\_X  
 ClientSampleId : 33585



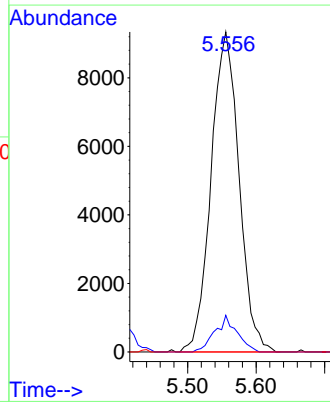
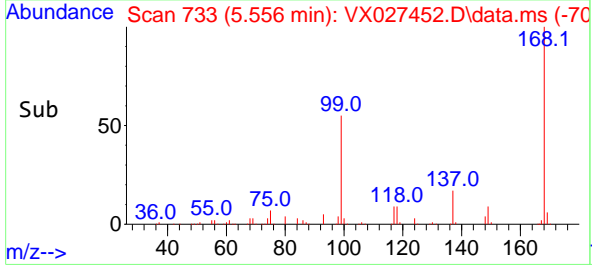
Tgt Ion:113 Resp: 195970  
 Ion Ratio Lower Upper  
 113 100  
 111 101.7 82.8 124.2  
 192 20.8 16.9 25.3

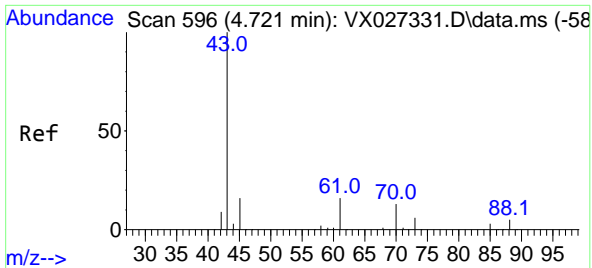


#36  
 1,1-Dichloropropene  
 Concen: 5.008 ug/l  
 RT: 5.556 min Scan# 733  
 Delta R.T. -0.140 min  
 Lab File: VX027452.D  
 Acq: 15 Mar 2022 17:08



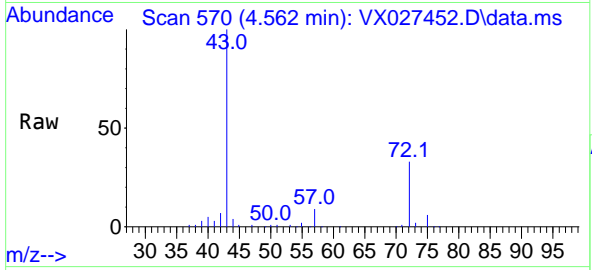
Tgt Ion: 75 Resp: 26474  
 Ion Ratio Lower Upper  
 75 100  
 110 9.0 18.3 54.8#  
 77 0.0 24.8 37.2#





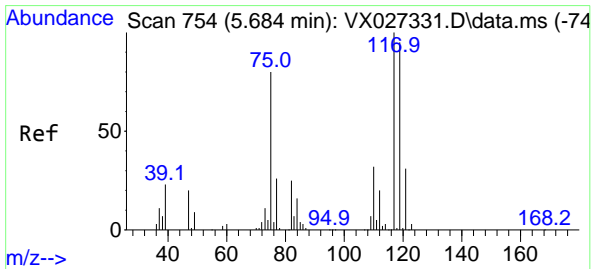
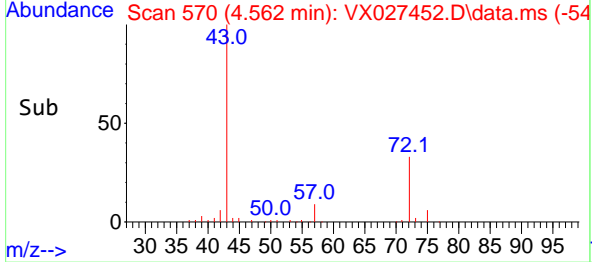
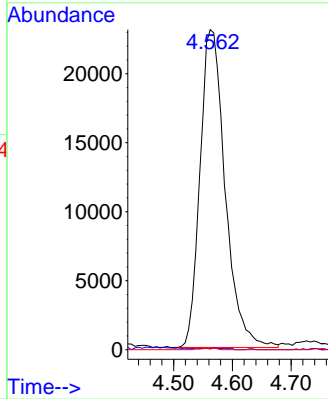
#37  
 Ethyl Acetate  
 Concen: 12.306 ug/l  
 RT: 4.562 min Scan# 51  
 Delta R.T. -0.159 min  
 Lab File: VX027452.D  
 Acq: 15 Mar 2022 17:08

Instrument : MSVOA\_X  
 ClientSampleId : 33585



Tgt Ion: 43 Resp: 68568

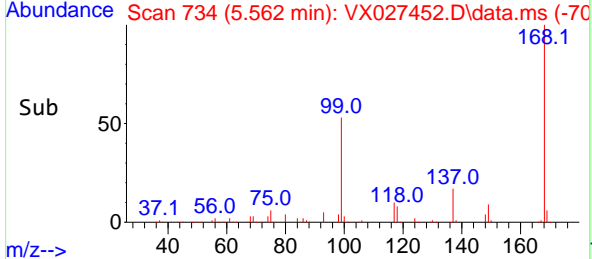
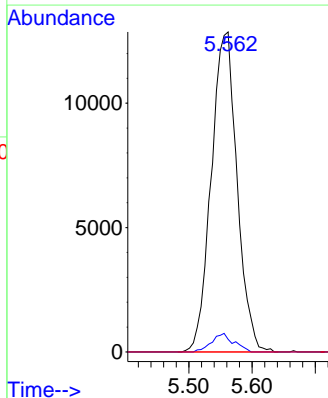
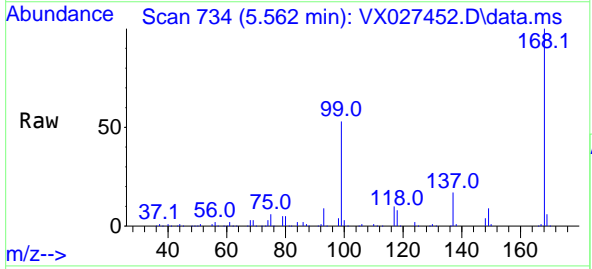
Ion	Ratio	Lower	Upper
43	100		
61	0.0	12.6	19.0#
70	0.3	10.2	15.2#

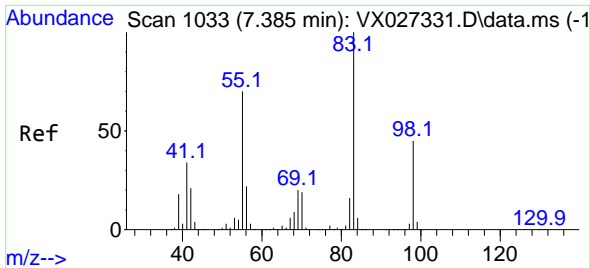


#38  
 Carbon Tetrachloride  
 Concen: 6.672 ug/l  
 RT: 5.562 min Scan# 734  
 Delta R.T. -0.122 min  
 Lab File: VX027452.D  
 Acq: 15 Mar 2022 17:08

Tgt Ion: 117 Resp: 36469

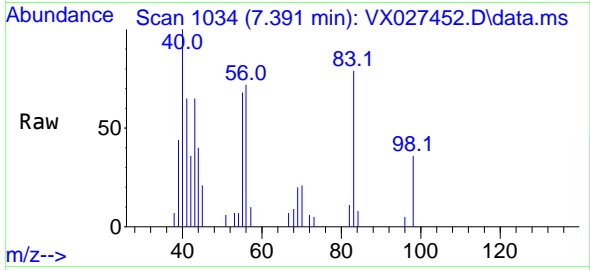
Ion	Ratio	Lower	Upper
117	100		
119	3.9	77.3	115.9#
121	0.0	24.2	36.2#





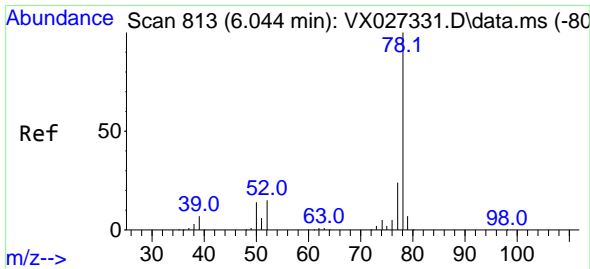
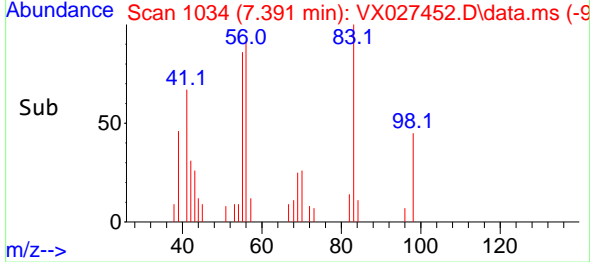
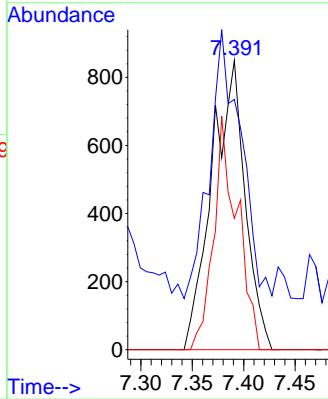
#39  
 Methylcyclohexane  
 Concen: 0.287 ug/l  
 RT: 7.391 min Scan# 1034  
 Delta R.T. 0.006 min  
 Lab File: VX027452.D  
 Acq: 15 Mar 2022 17:08

Instrument : MSVOA\_X  
 ClientSampleId : 33585



Tgt Ion: 83 Resp: 1915

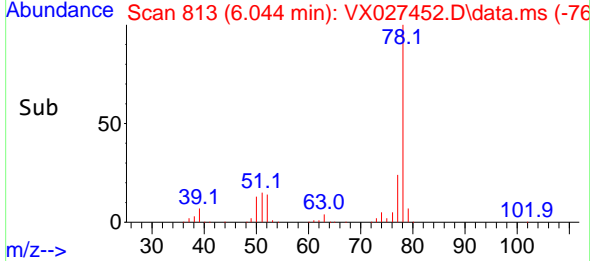
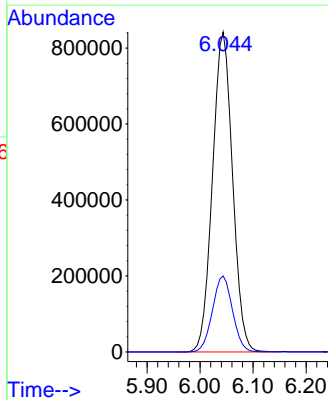
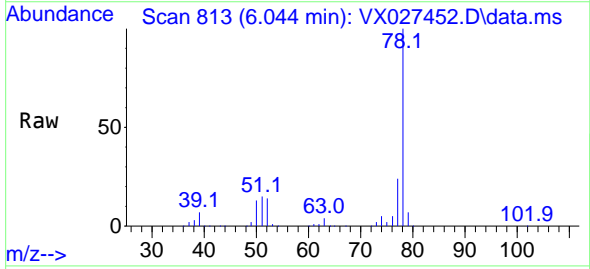
Ion	Ratio	Lower	Upper
83	100		
55	63.8	54.6	81.8
98	45.4	37.4	56.2

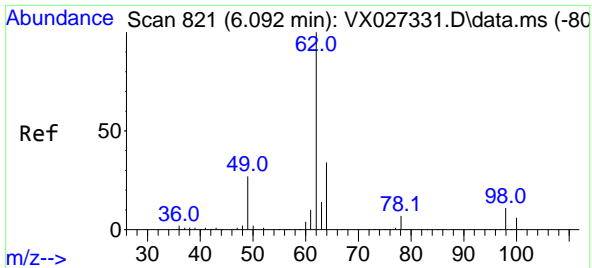


#40  
 Benzene  
 Concen: 137.427 ug/l  
 RT: 6.044 min Scan# 813  
 Delta R.T. -0.000 min  
 Lab File: VX027452.D  
 Acq: 15 Mar 2022 17:08

Tgt Ion: 78 Resp: 2212577

Ion	Ratio	Lower	Upper
78	100		
77	23.7	19.3	28.9

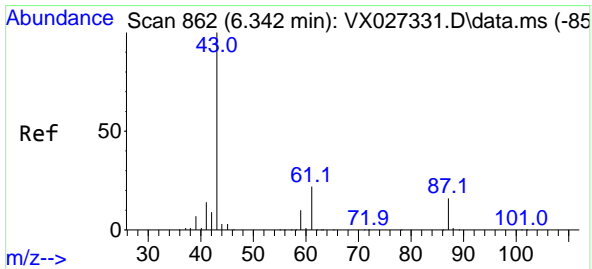
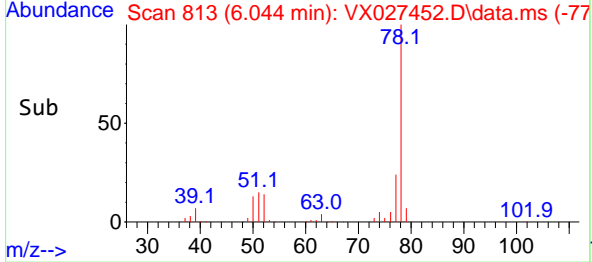
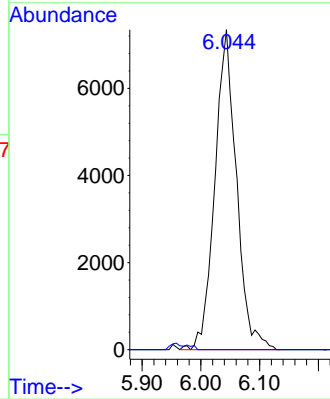
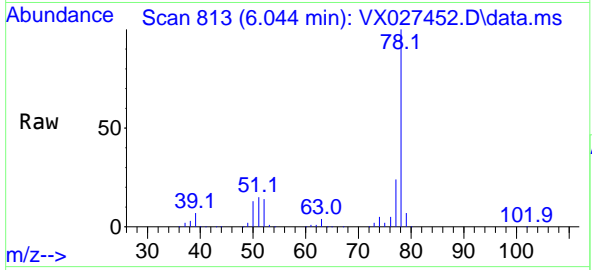




#42  
 1,2-Dichloroethane  
 Concen: 3.572 ug/l  
 RT: 6.044 min Scan# 813  
 Delta R.T. -0.048 min  
 Lab File: VX027452.D  
 Acq: 15 Mar 2022 17:08

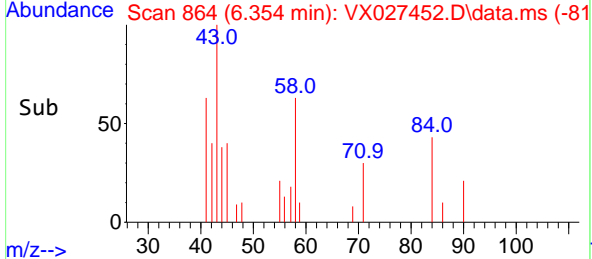
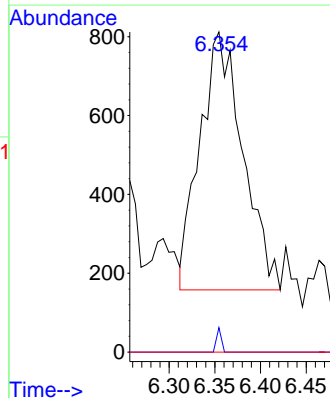
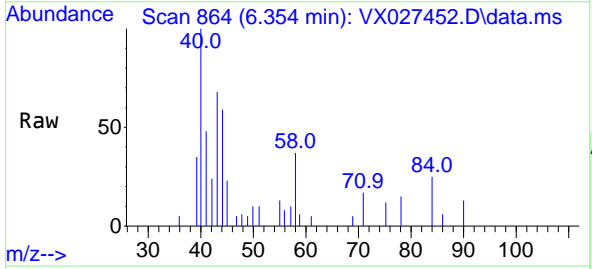
Instrument : MSVOA\_X  
 ClientSampleId : 33585

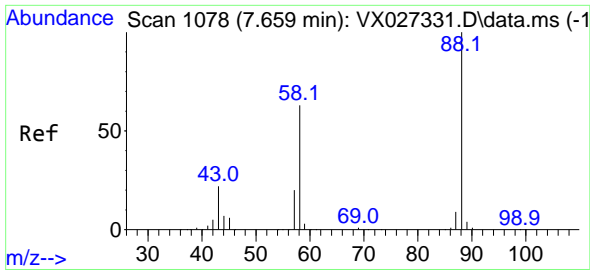
Tgt Ion: 62 Resp: 18789  
 Ion Ratio Lower Upper  
 62 100  
 98 0.0 0.0 20.4



#43  
 Isopropyl Acetate  
 Concen: 0.254 ug/l  
 RT: 6.354 min Scan# 864  
 Delta R.T. 0.012 min  
 Lab File: VX027452.D  
 Acq: 15 Mar 2022 17:08

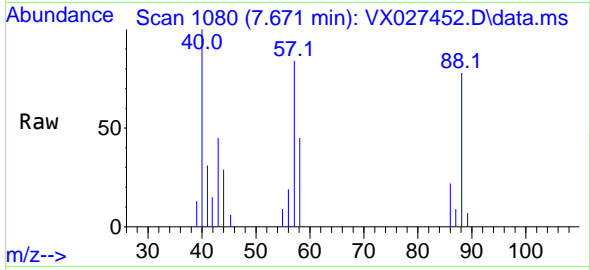
Tgt Ion: 43 Resp: 2132  
 Ion Ratio Lower Upper  
 43 100  
 61 0.0 18.5 27.7#  
 87 0.0 13.0 19.6#



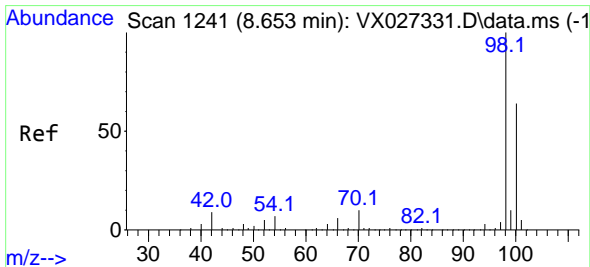
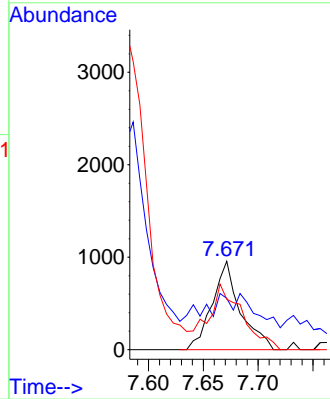
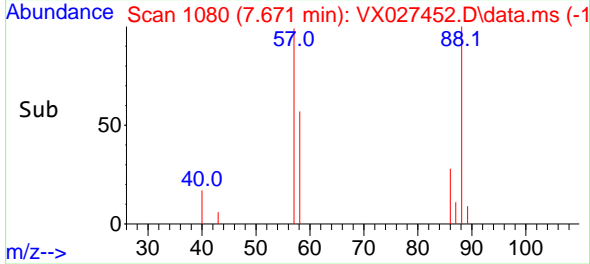


#49  
 1,4-Dioxane  
 Concen: 15.625 ug/l  
 RT: 7.671 min Scan# 1080  
 Delta R.T. 0.012 min  
 Lab File: VX027452.D  
 Acq: 15 Mar 2022 17:08

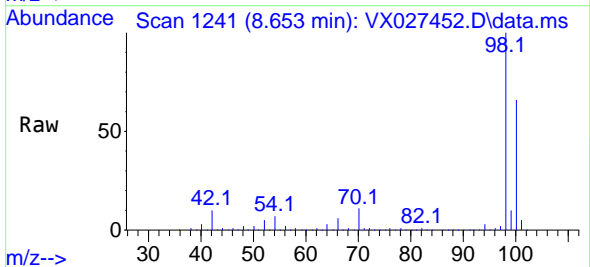
Instrument : MSVOA\_X  
 ClientSampleId : 33585



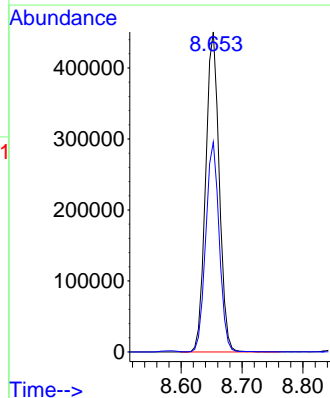
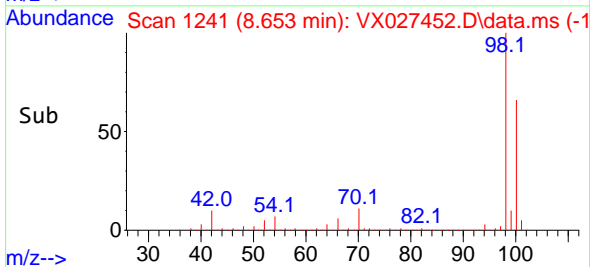
Tgt Ion: 88 Resp: 1709  
 Ion Ratio Lower Upper  
 88 100  
 43 0.0 21.9 32.9#  
 58 91.3 53.7 80.5#

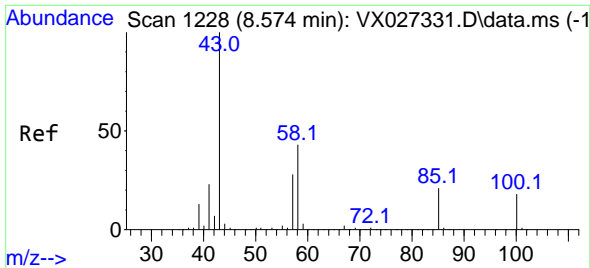


#50  
 Toluene-d8  
 Concen: 48.565 ug/l  
 RT: 8.653 min Scan# 1241  
 Delta R.T. -0.000 min  
 Lab File: VX027452.D  
 Acq: 15 Mar 2022 17:08



Tgt Ion: 98 Resp: 698053  
 Ion Ratio Lower Upper  
 98 100  
 100 65.1 52.6 78.8

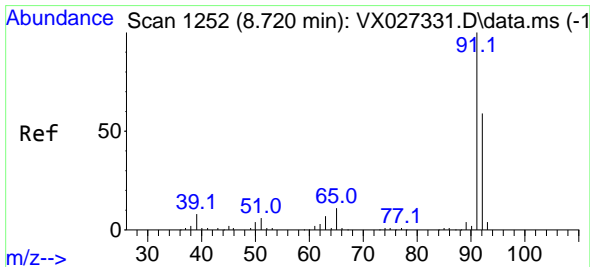
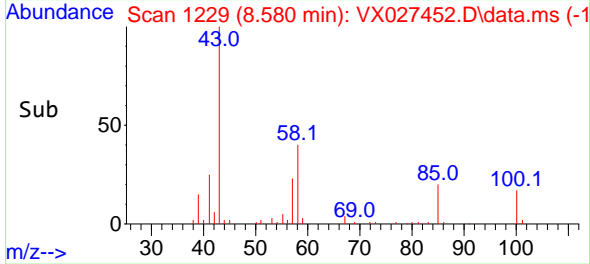
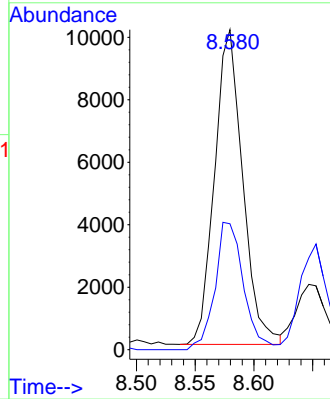
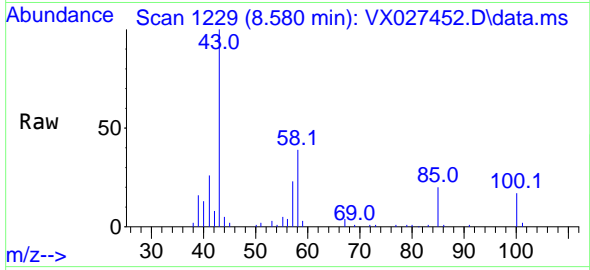




#51  
 4-Methyl-2-Pentanone  
 Concen: 2.983 ug/l  
 RT: 8.580 min Scan# 11  
 Delta R.T. 0.006 min  
 Lab File: VX027452.D  
 Acq: 15 Mar 2022 17:08

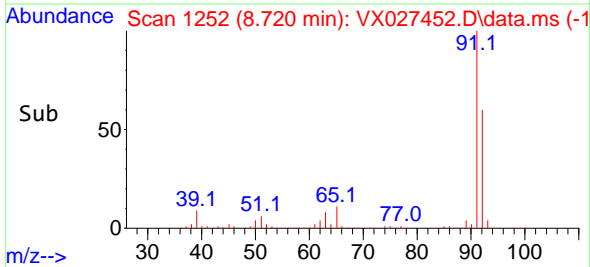
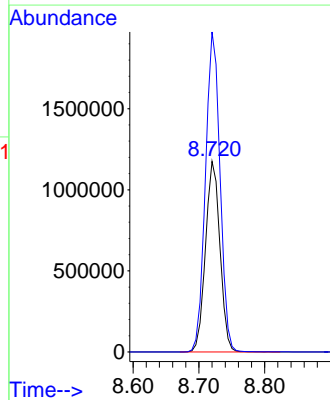
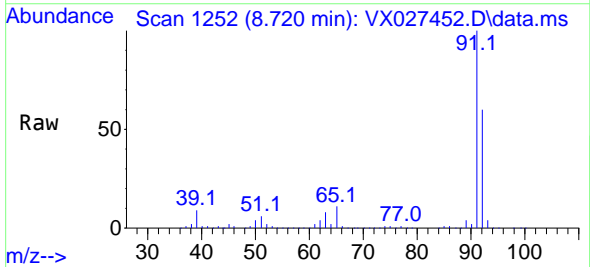
Instrument :  
 MSVOA\_X  
 ClientSampleId :  
 33585

Tgt Ion: 43 Resp: 16773  
 Ion Ratio Lower Upper  
 43 100  
 58 40.8 36.1 54.1

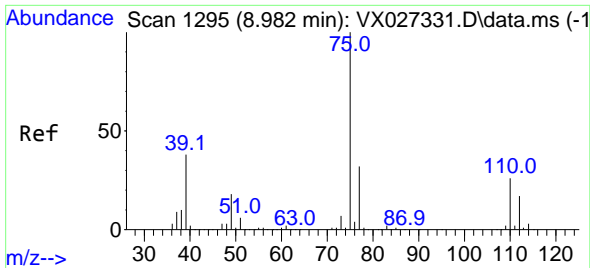


#52  
 Toluene  
 Concen: 174.959 ug/l  
 RT: 8.720 min Scan# 1252  
 Delta R.T. -0.000 min  
 Lab File: VX027452.D  
 Acq: 15 Mar 2022 17:08

Tgt Ion: 92 Resp: 1795740  
 Ion Ratio Lower Upper  
 92 100  
 91 169.2 137.5 206.3



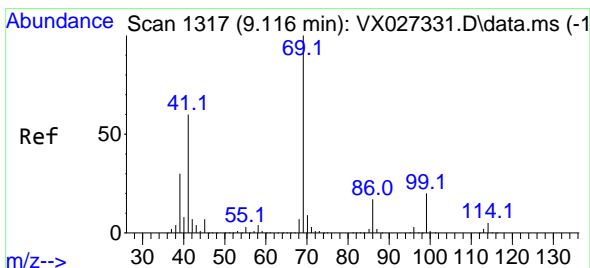
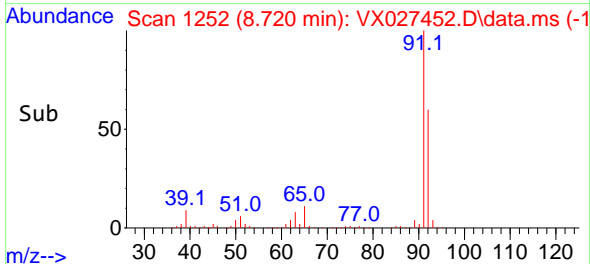
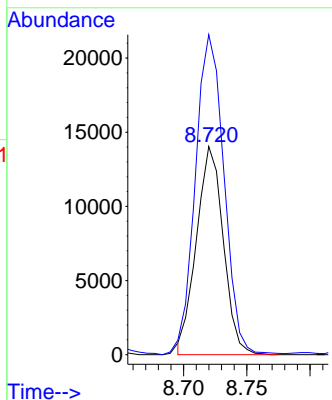
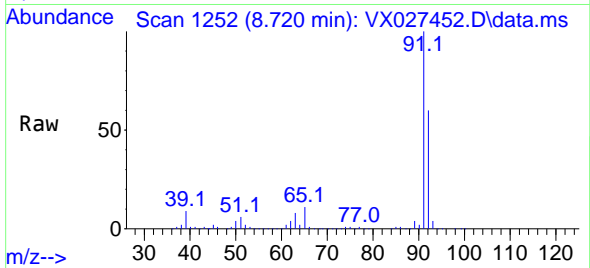




#53  
 t-1,3-Dichloropropene  
 Concen: 3.810 ug/l  
 RT: 8.720 min Scan# 111  
 Delta R.T. -0.262 min  
 Lab File: VX027452.D  
 Acq: 15 Mar 2022 17:08

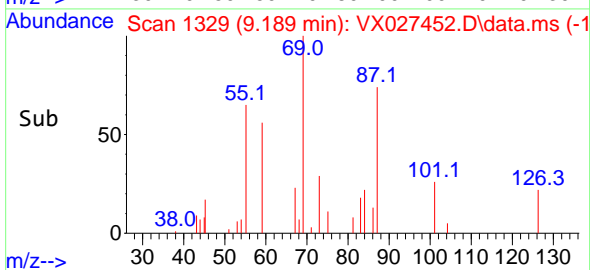
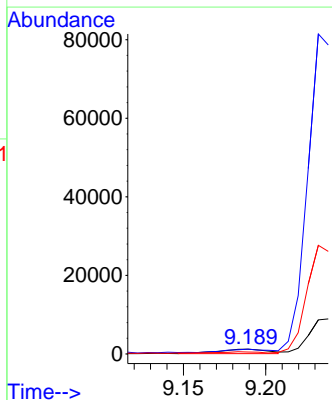
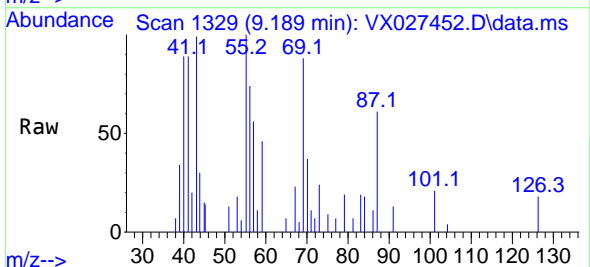
Instrument : MSVOA\_X  
 ClientSampleId : 33585

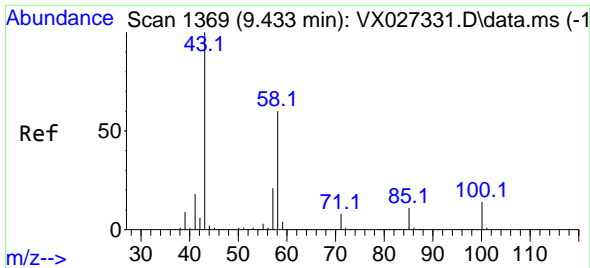
Tgt Ion: 75 Resp: 20719  
 Ion Ratio Lower Upper  
 75 100  
 77 153.1 25.4 38.0#



#56  
 Ethyl methacrylate  
 Concen: 0.374 ug/l  
 RT: 9.189 min Scan# 1329  
 Delta R.T. 0.073 min  
 Lab File: VX027452.D  
 Acq: 15 Mar 2022 17:08

Tgt Ion: 69 Resp: 2365  
 Ion Ratio Lower Upper  
 69 100  
 41 0.0 43.8 65.6#  
 39 0.0 22.2 33.2#

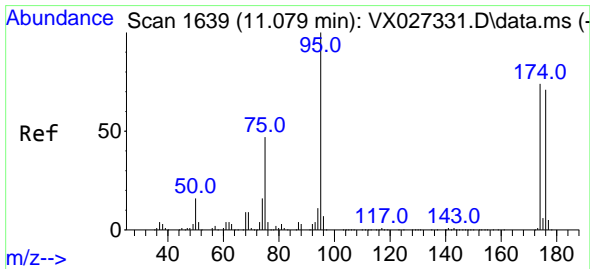
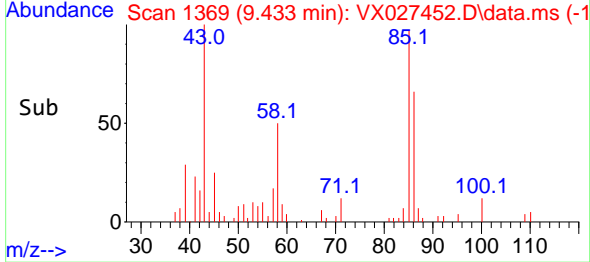
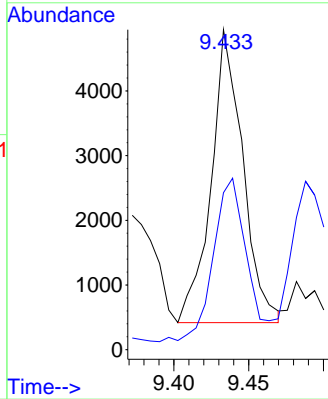
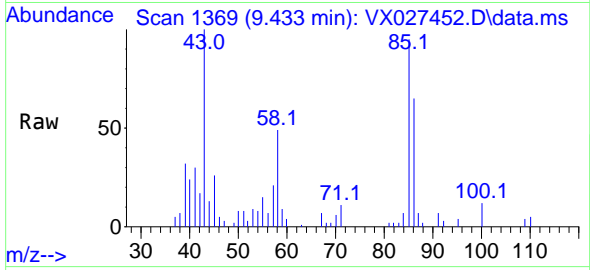




#59  
 2-Hexanone  
 Concen: 1.537 ug/l  
 RT: 9.433 min Scan# 11  
 Delta R.T. 0.000 min  
 Lab File: VX027452.D  
 Acq: 15 Mar 2022 17:08

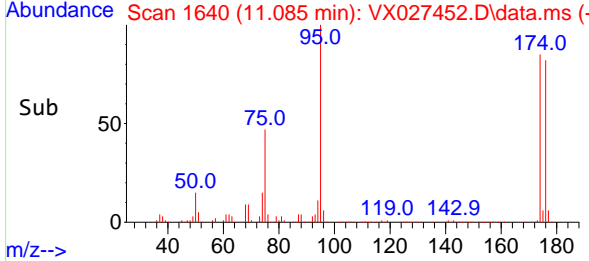
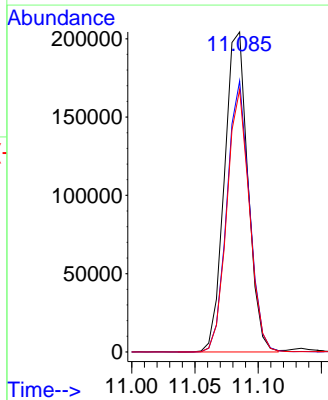
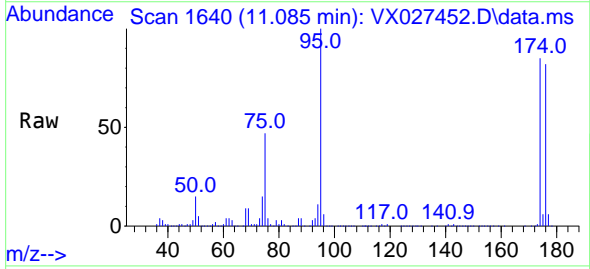
Instrument : MSVOA\_X  
 ClientSampleId : 33585

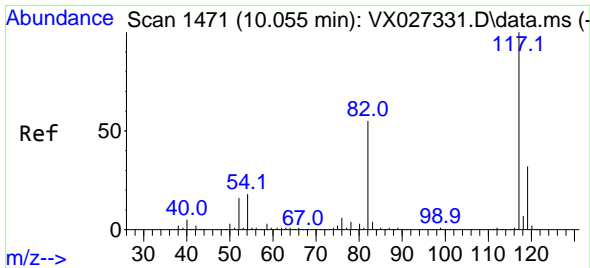
Tgt Ion: 43 Resp: 6678  
 Ion Ratio Lower Upper  
 43 100  
 58 58.6 31.9 95.7



#62  
 4-Bromofluorobenzene  
 Concen: 48.207 ug/l  
 RT: 11.085 min Scan# 1640  
 Delta R.T. 0.006 min  
 Lab File: VX027452.D  
 Acq: 15 Mar 2022 17:08

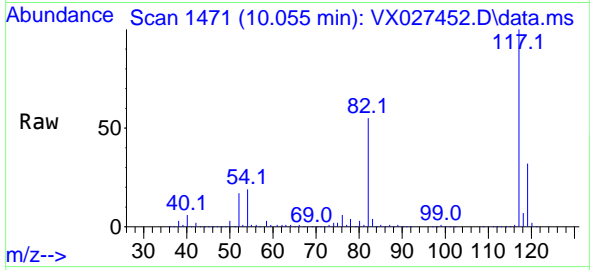
Tgt Ion: 95 Resp: 264086  
 Ion Ratio Lower Upper  
 95 100  
 174 80.9 0.0 163.0  
 176 78.6 0.0 155.0





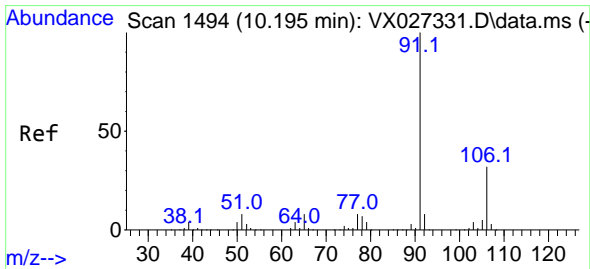
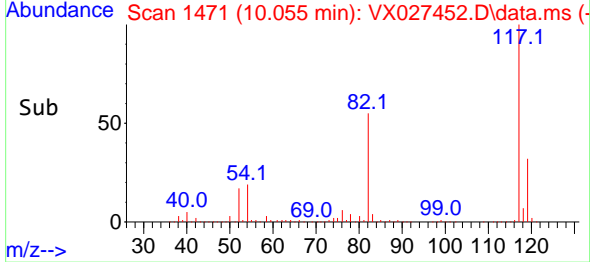
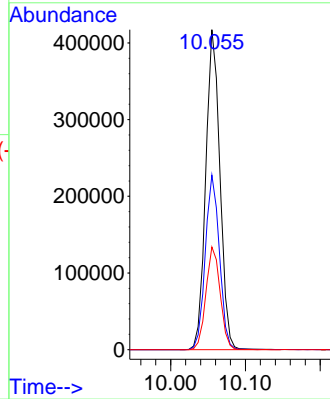
#63  
 Chlorobenzene-d5  
 Concen: 50.000 ug/l  
 RT: 10.055 min Scan# 1471  
 Delta R.T. -0.000 min  
 Lab File: VX027452.D  
 Acq: 15 Mar 2022 17:08

Instrument : MSVOA\_X  
 ClientSampleId : 33585

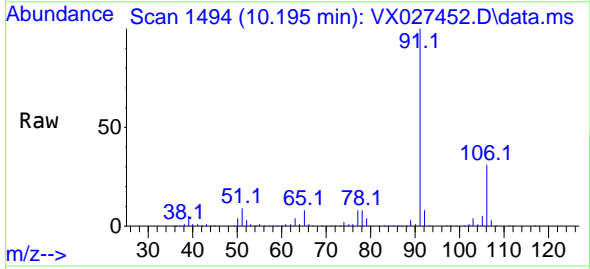


Tgt Ion:117 Resp: 549988

Ion	Ratio	Lower	Upper
117	100		
82	54.5	41.8	62.8
119	32.1	24.8	37.2

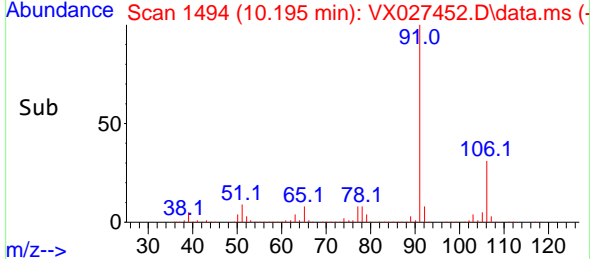
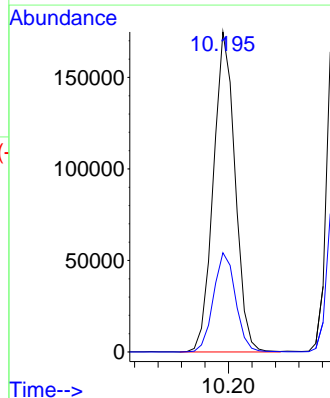


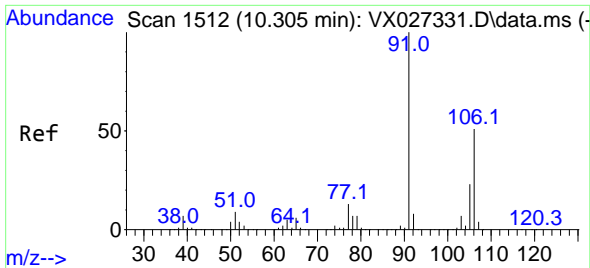
#67  
 Ethyl Benzene  
 Concen: 11.230 ug/l  
 RT: 10.195 min Scan# 1494  
 Delta R.T. 0.000 min  
 Lab File: VX027452.D  
 Acq: 15 Mar 2022 17:08



Tgt Ion: 91 Resp: 224088

Ion	Ratio	Lower	Upper
91	100		
106	31.0	24.6	36.8

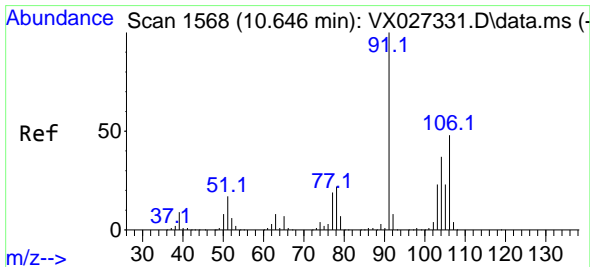
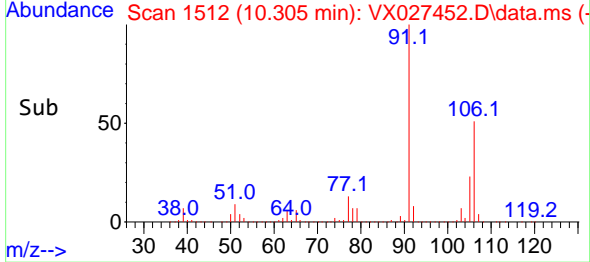
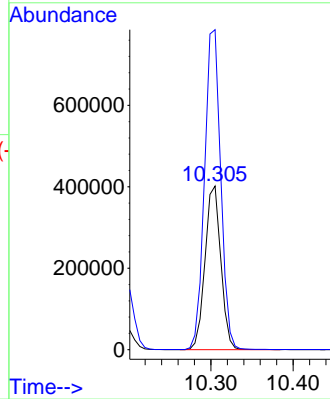
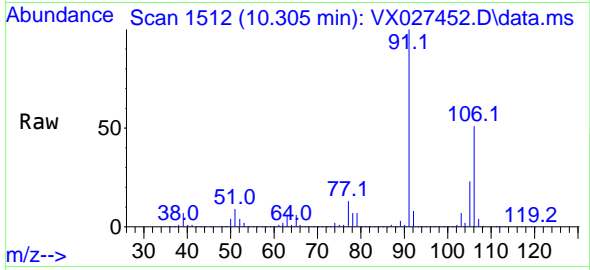




#68  
 m/p-Xylenes  
 Concen: 68.629 ug/l  
 RT: 10.305 min Scan# 1512  
 Delta R.T. -0.000 min  
 Lab File: VX027452.D  
 Acq: 15 Mar 2022 17:08

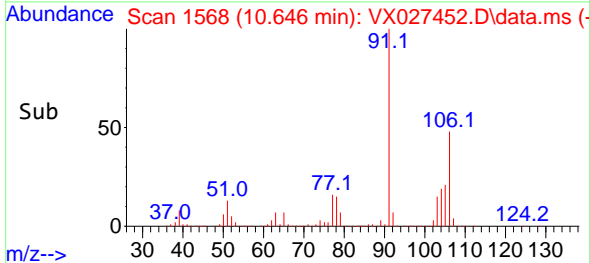
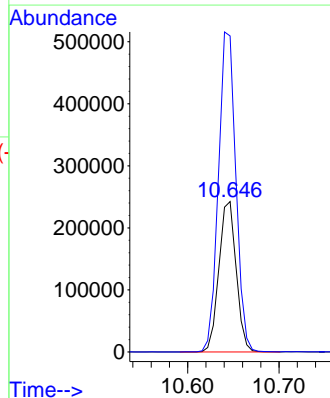
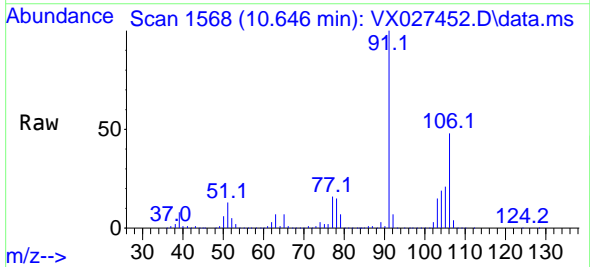
Instrument : MSVOA\_X  
 ClientSampleId : 33585

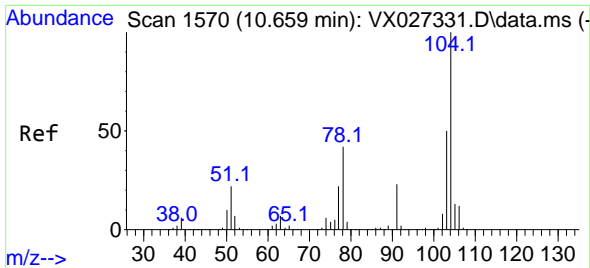
Tgt Ion:106 Resp: 537164  
 Ion Ratio Lower Upper  
 106 100  
 91 199.9 160.4 240.6



#69  
 o-Xylene  
 Concen: 41.356 ug/l  
 RT: 10.646 min Scan# 1568  
 Delta R.T. 0.000 min  
 Lab File: VX027452.D  
 Acq: 15 Mar 2022 17:08

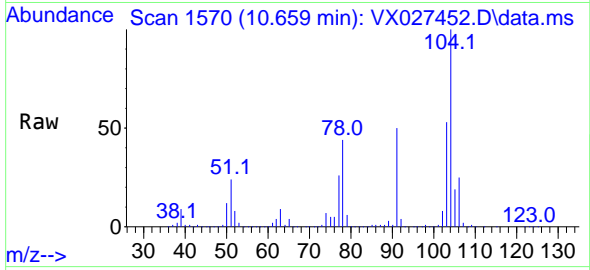
Tgt Ion:106 Resp: 319585  
 Ion Ratio Lower Upper  
 106 100  
 91 214.3 106.1 318.1



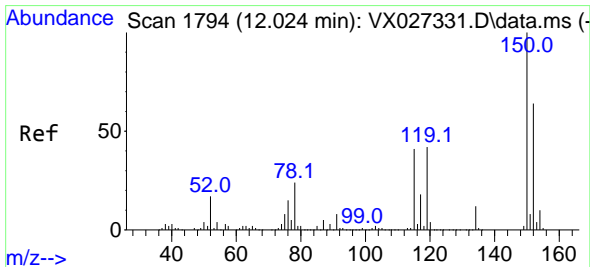
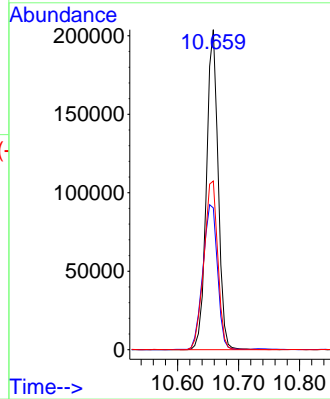
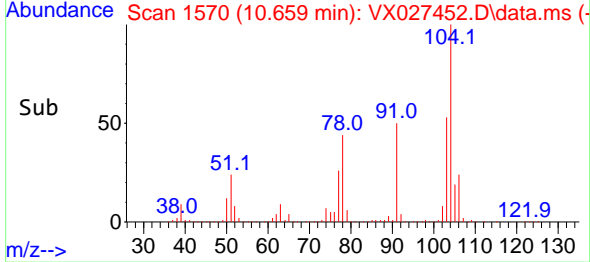


#70  
 Styrene  
 Concen: 21.246 ug/l  
 RT: 10.659 min Scan# 11  
 Delta R.T. -0.000 min  
 Lab File: VX027452.D  
 Acq: 15 Mar 2022 17:08

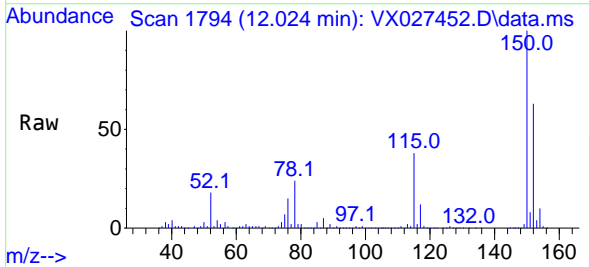
Instrument :  
 MSVOA\_X  
 ClientSampleId :  
 33585



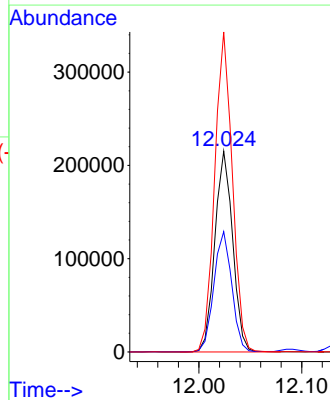
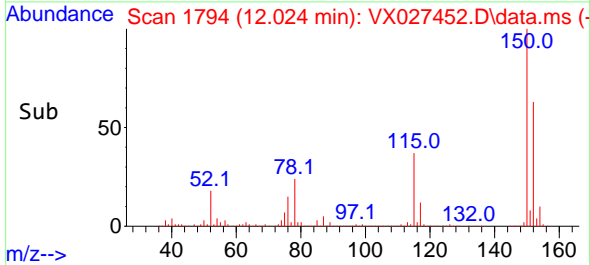
Tgt Ion:104 Resp: 272521  
 Ion Ratio Lower Upper  
 104 100  
 78 56.7 38.6 57.8  
 103 62.6 43.8 65.8

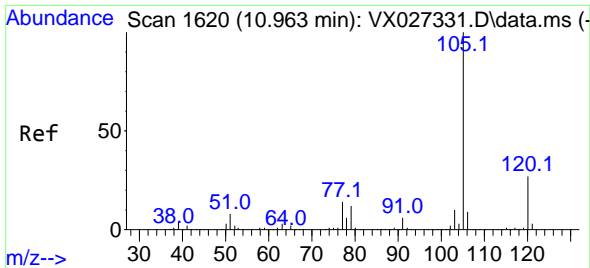


#72  
 1,4-Dichlorobenzene-d4  
 Concen: 50.000 ug/l  
 RT: 12.024 min Scan# 1794  
 Delta R.T. 0.000 min  
 Lab File: VX027452.D  
 Acq: 15 Mar 2022 17:08



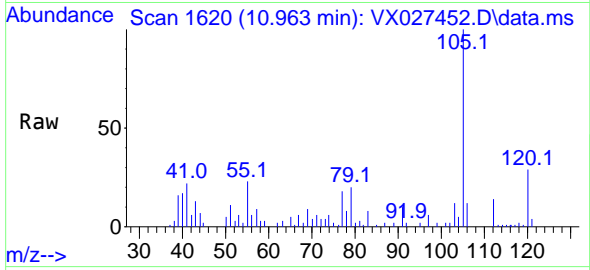
Tgt Ion:152 Resp: 259517  
 Ion Ratio Lower Upper  
 152 100  
 115 60.1 37.5 112.7  
 150 157.7 0.0 338.2



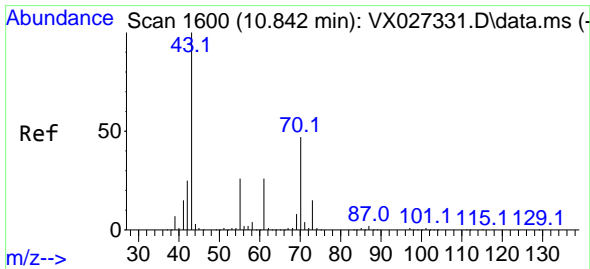
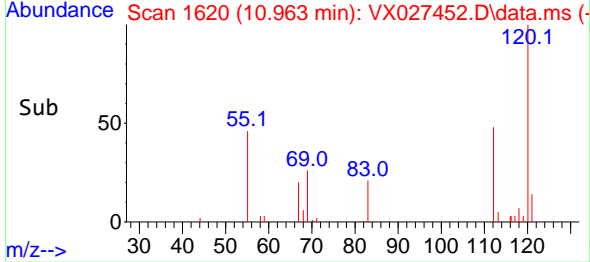
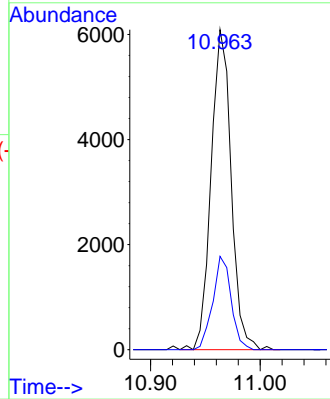


#73  
 Isopropylbenzene  
 Concen: 0.408 ug/l  
 RT: 10.963 min Scan# 1609  
 Delta R.T. 0.000 min  
 Lab File: VX027452.D  
 Acq: 15 Mar 2022 17:08

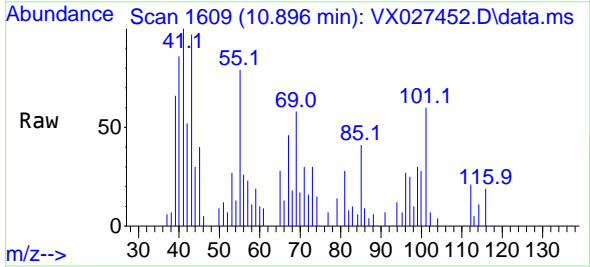
Instrument : MSVOA\_X  
 ClientSampleId : 33585



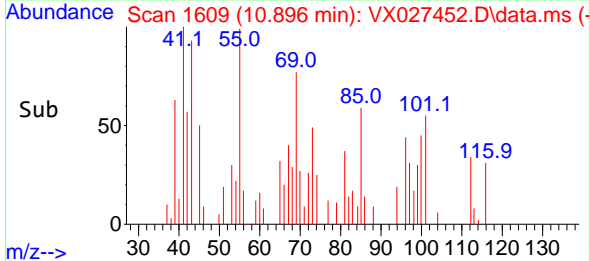
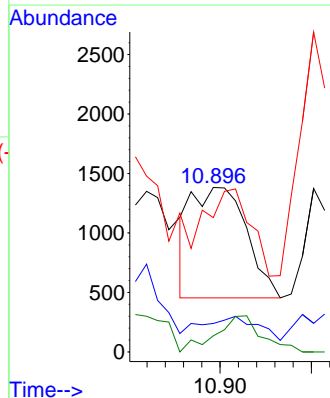
Tgt Ion:105 Resp: 7748  
 Ion Ratio Lower Upper  
 105 100  
 120 26.7 13.5 40.5

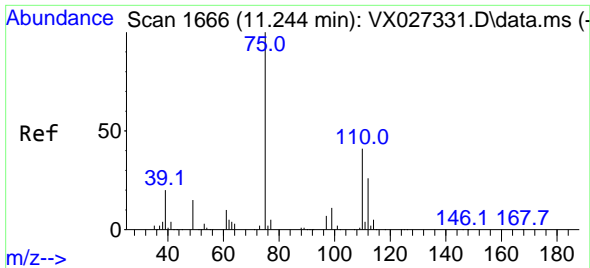


#74  
 N-ethyl acetate  
 Concen: 0.282 ug/l  
 RT: 10.896 min Scan# 1609  
 Delta R.T. 0.054 min  
 Lab File: VX027452.D  
 Acq: 15 Mar 2022 17:08



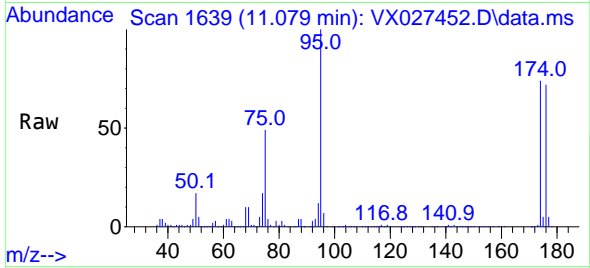
Tgt Ion: 43 Resp: 1953  
 Ion Ratio Lower Upper  
 43 100  
 70 0.0 42.5 63.7#  
 55 0.0 23.1 34.7#  
 61 24.0 22.8 34.2



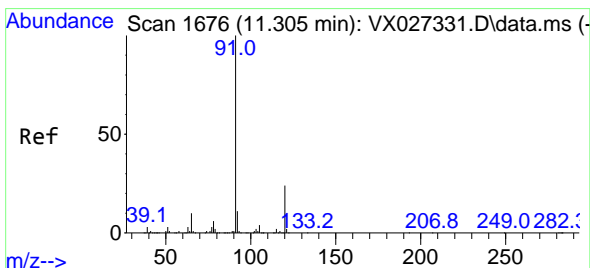
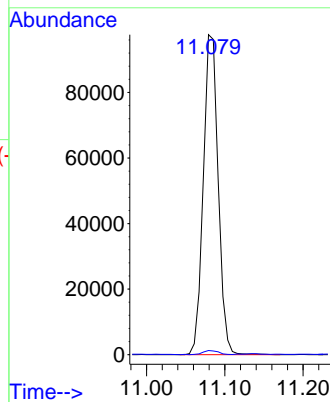
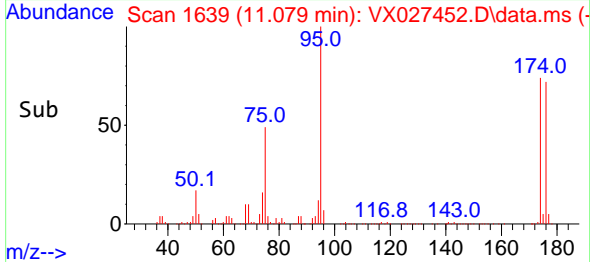


#76  
 1,2,3-Trichloropropane  
 Concen: 22.624 ug/l  
 RT: 11.079 min Scan# 1639  
 Delta R.T. -0.165 min  
 Lab File: VX027452.D  
 Acq: 15 Mar 2022 17:08

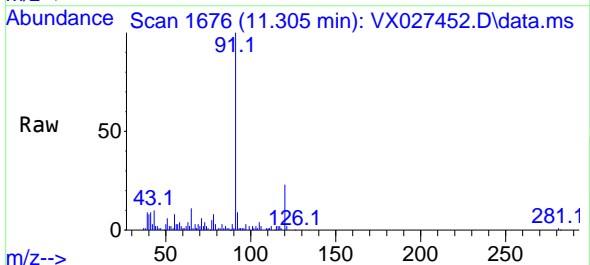
Instrument : MSVOA\_X  
 ClientSampleId : 33585



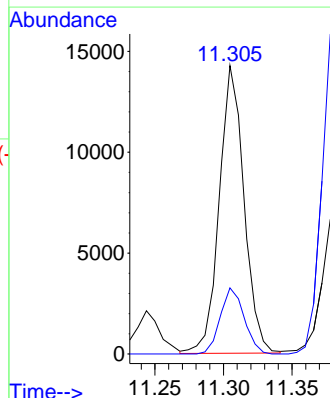
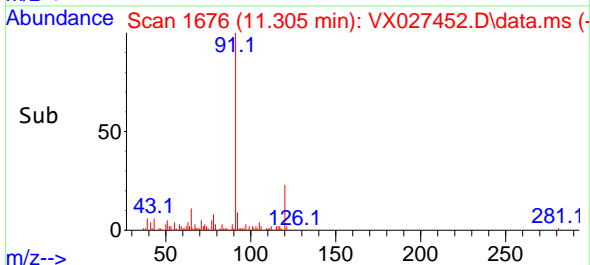
Tgt Ion: 75 Resp: 128816  
 Ion Ratio Lower Upper  
 75 100  
 77 1.4 19.4 58.2#

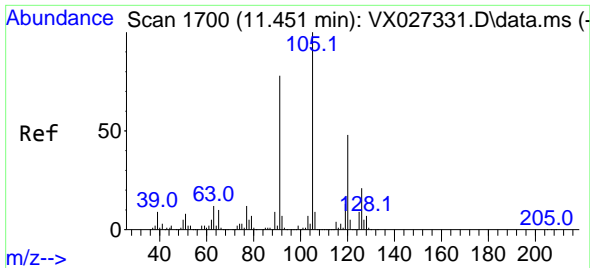


#78  
 n-propylbenzene  
 Concen: 0.838 ug/l  
 RT: 11.305 min Scan# 1676  
 Delta R.T. -0.000 min  
 Lab File: VX027452.D  
 Acq: 15 Mar 2022 17:08



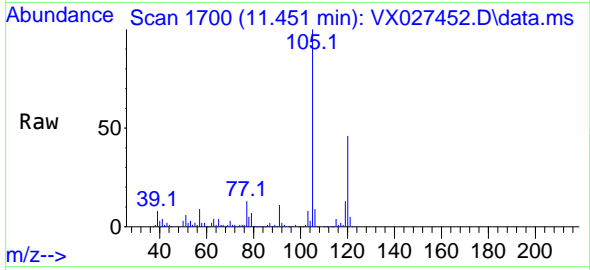
Tgt Ion: 91 Resp: 17896  
 Ion Ratio Lower Upper  
 91 100  
 120 22.1 11.6 34.8



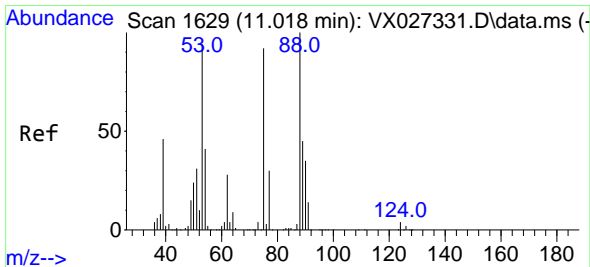
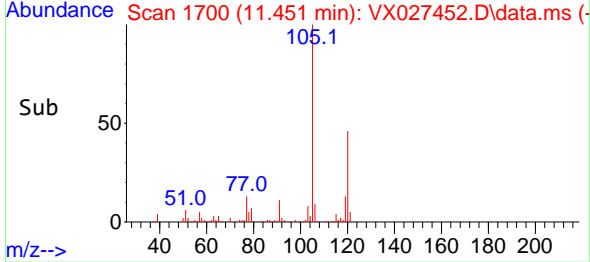
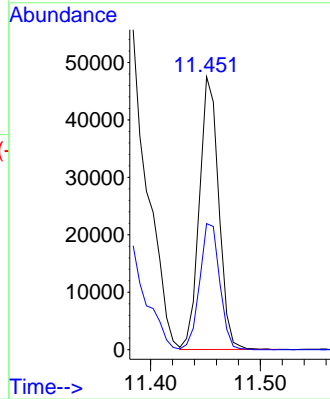


#80  
 1,3,5-Trimethylbenzene  
 Concen: 3.575 ug/l  
 RT: 11.451 min Scan# 11  
 Delta R.T. 0.000 min  
 Lab File: VX027452.D  
 Acq: 15 Mar 2022 17:08

Instrument :  
 MSVOA\_X  
 ClientSampleId :  
 33585

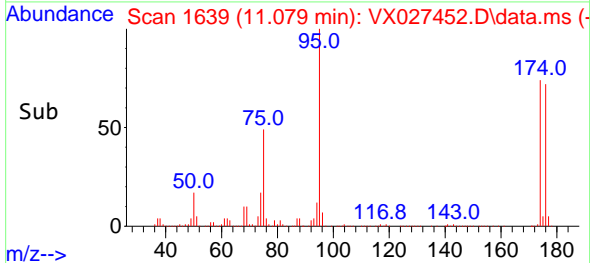
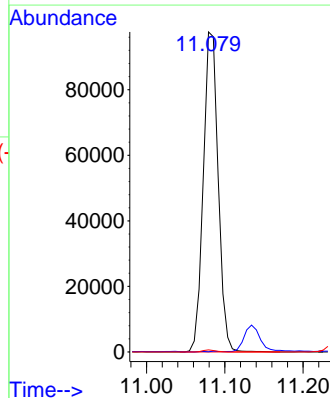
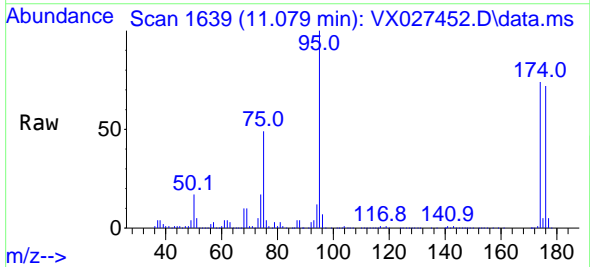


Tgt Ion:105 Resp: 58172  
 Ion Ratio Lower Upper  
 105 100  
 120 48.0 24.3 72.9

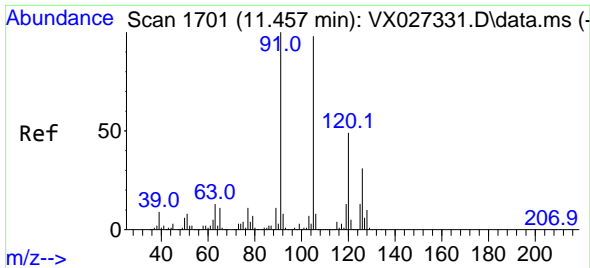


#81  
 trans-1,4-Dichloro-2-butene  
 Concen: 73.167 ug/l  
 RT: 11.079 min Scan# 1639  
 Delta R.T. 0.061 min  
 Lab File: VX027452.D  
 Acq: 15 Mar 2022 17:08

Tgt Ion: 75 Resp: 128816  
 Ion Ratio Lower Upper  
 75 100  
 53 0.0 69.0 103.4#  
 89 0.6 37.0 55.6#



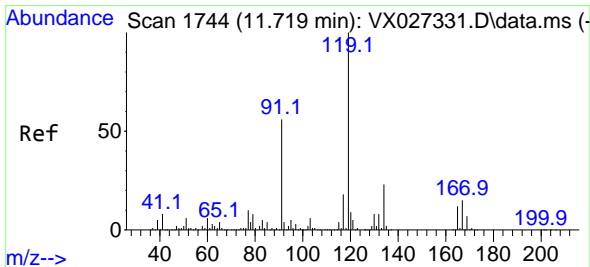
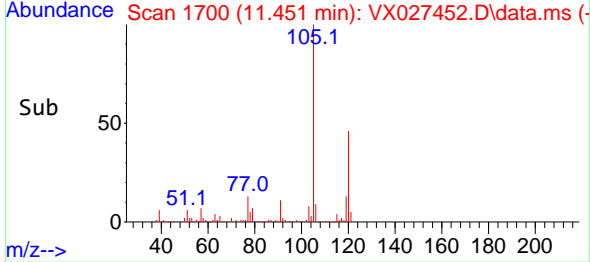
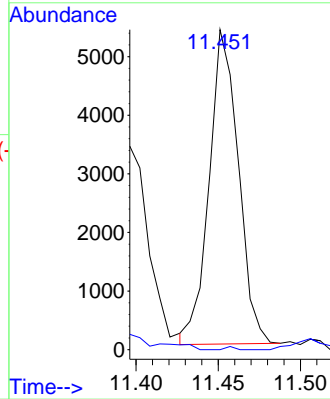
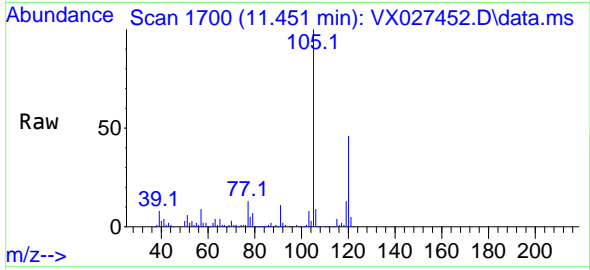




#82  
 4-Chlorotoluene  
 Concen: 0.439 ug/l  
 RT: 11.451 min Scan# 11  
 Delta R.T. -0.006 min  
 Lab File: VX027452.D  
 Acq: 15 Mar 2022 17:08

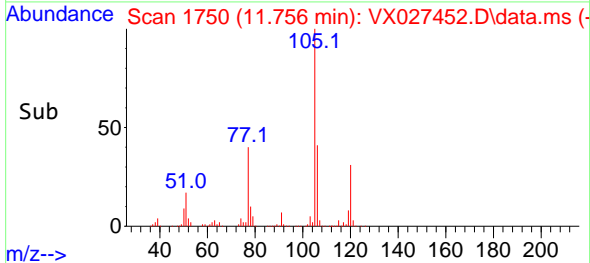
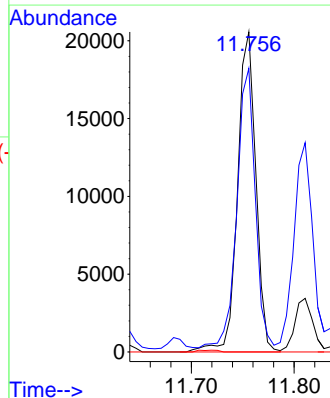
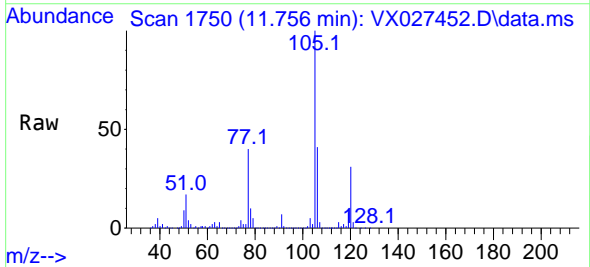
Instrument :  
 MSVOA\_X  
 ClientSampleId :  
 33585

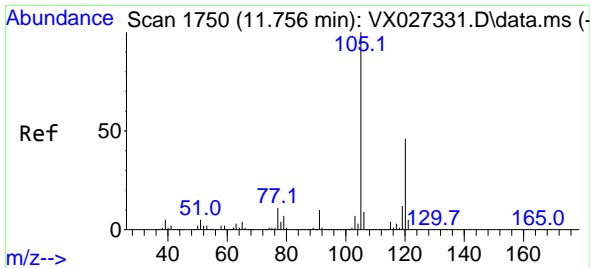
Tgt Ion: 91 Resp: 6621  
 Ion Ratio Lower Upper  
 91 100  
 126 0.0 14.9 44.5#



#83  
 tert-Butylbenzene  
 Concen: 1.565 ug/l  
 RT: 11.756 min Scan# 1750  
 Delta R.T. 0.037 min  
 Lab File: VX027452.D  
 Acq: 15 Mar 2022 17:08

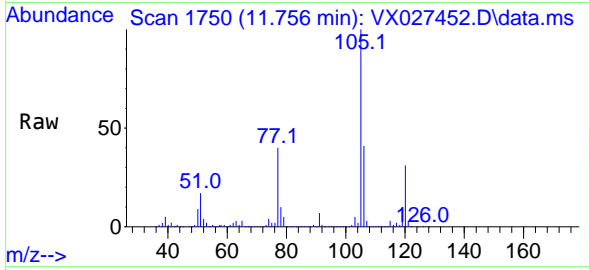
Tgt Ion: 119 Resp: 25451  
 Ion Ratio Lower Upper  
 119 100  
 91 87.3 26.9 80.6#  
 134 0.0 11.4 34.2#



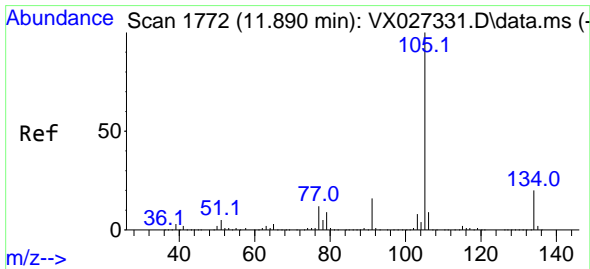
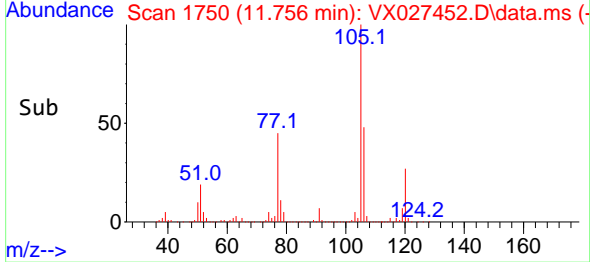
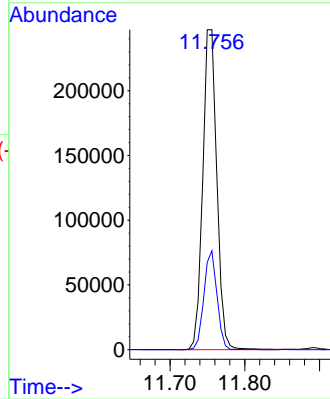


#84  
 1,2,4-Trimethylbenzene  
 Concen: 20.041 ug/l  
 RT: 11.756 min Scan# 1750  
 Delta R.T. -0.000 min  
 Lab File: VX027452.D  
 Acq: 15 Mar 2022 17:08

Instrument : MSVOA\_X  
 ClientSampleId : 33585

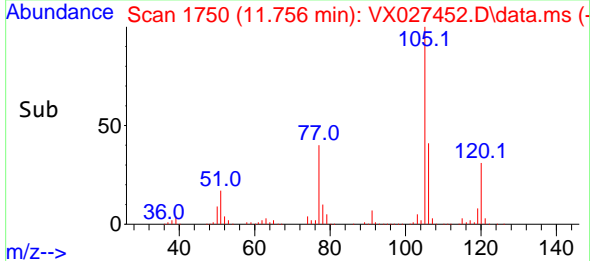
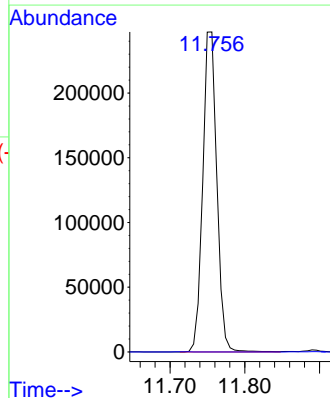
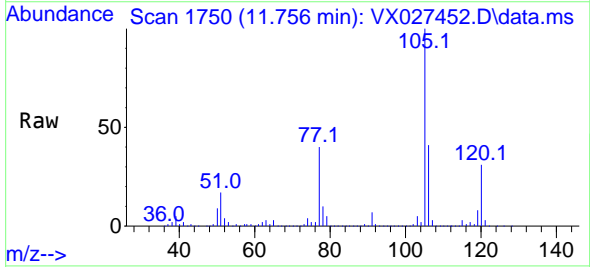


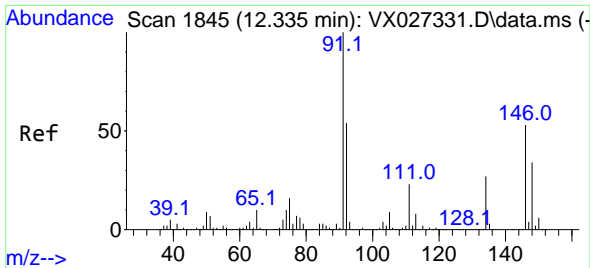
Tgt Ion:105 Resp: 323436  
 Ion Ratio Lower Upper  
 105 100  
 120 28.6 22.6 67.8



#85  
 sec-Butylbenzene  
 Concen: 16.487 ug/l  
 RT: 11.756 min Scan# 1750  
 Delta R.T. -0.134 min  
 Lab File: VX027452.D  
 Acq: 15 Mar 2022 17:08

Tgt Ion:105 Resp: 323436  
 Ion Ratio Lower Upper  
 105 100  
 134 0.0 10.2 30.4#



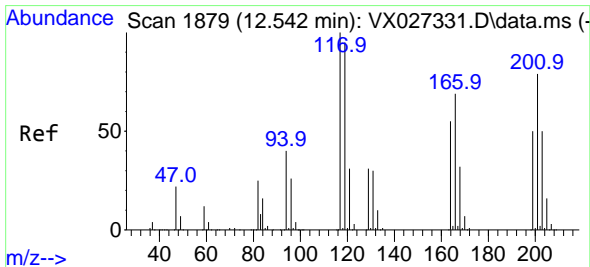
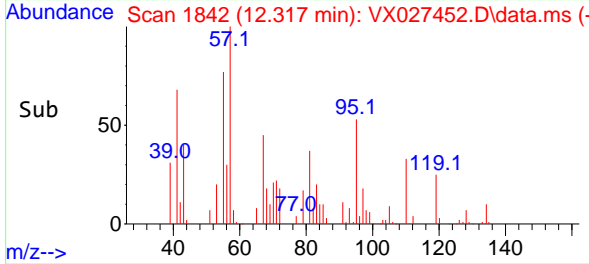
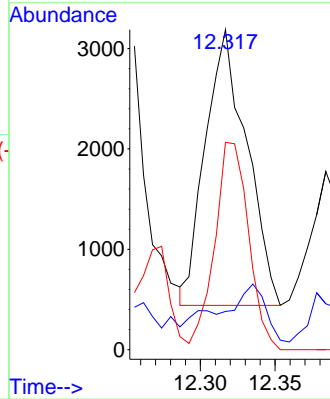
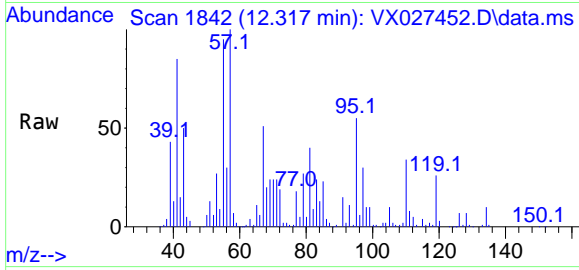


#89  
 n-Butylbenzene  
 Concen: 0.379 ug/l  
 RT: 12.317 min Scan# 11  
 Delta R.T. -0.018 min  
 Lab File: VX027452.D  
 Acq: 15 Mar 2022 17:08

Instrument : MSVOA\_X  
 ClientSampleId : 33585

Tgt Ion: 91 Resp: 5272

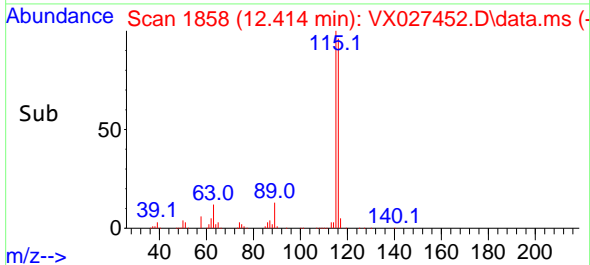
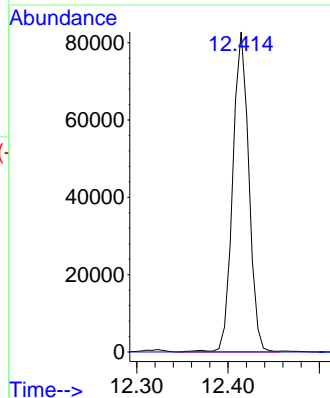
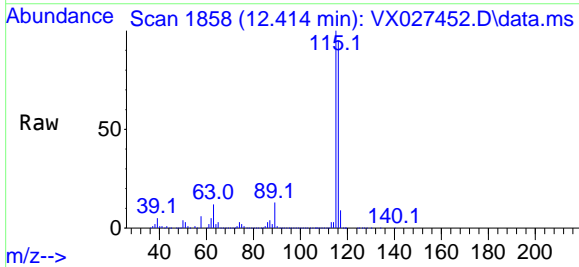
Ion	Ratio	Lower	Upper
91	100		
92	6.4	27.8	83.3#
134	61.6	13.3	39.8#

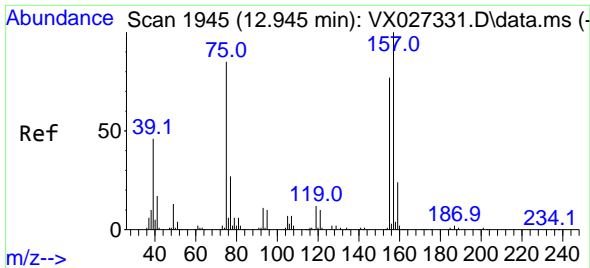


#90  
 Hexachloroethane  
 Concen: 39.103 ug/l  
 RT: 12.414 min Scan# 1858  
 Delta R.T. -0.128 min  
 Lab File: VX027452.D  
 Acq: 15 Mar 2022 17:08

Tgt Ion: 117 Resp: 101225

Ion	Ratio	Lower	Upper
117	100		
201	0.0	39.5	118.5#



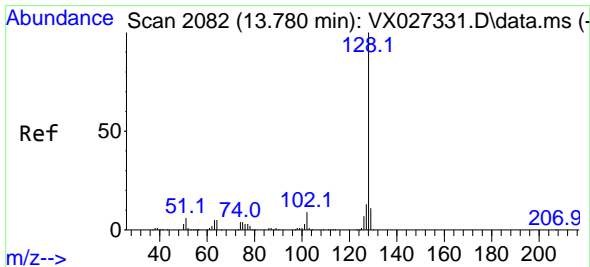
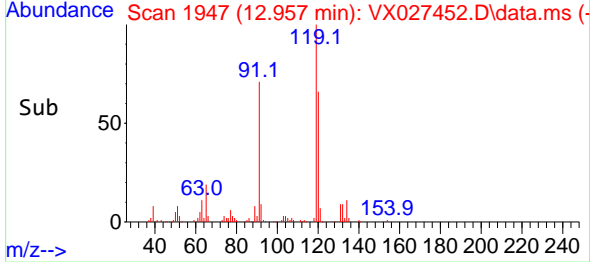
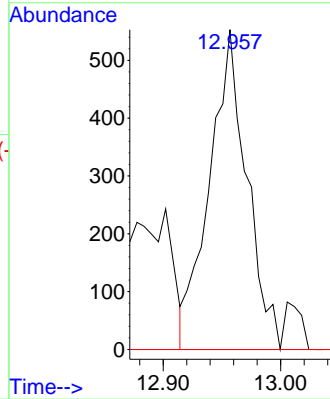
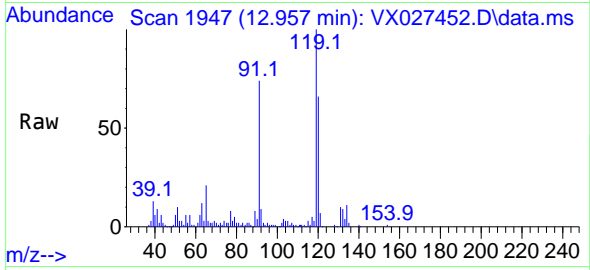


#92  
 1,2-Dibromo-3-Chloropropane  
 Concen: 0.892 ug/l  
 RT: 12.957 min Scan# 1945  
 Delta R.T. 0.012 min  
 Lab File: VX027452.D  
 Acq: 15 Mar 2022 17:08

Instrument : MSVOA\_X  
 ClientSampleId : 33585

Tgt Ion: 75 Resp: 1219

Ion	Ratio	Lower	Upper
75	100		
155	0.0	47.0	141.2#
157	0.0	57.9	173.6#



#95  
 Naphthalene  
 Concen: 156.761 ug/l  
 RT: 13.780 min Scan# 2082  
 Delta R.T. -0.000 min  
 Lab File: VX027452.D  
 Acq: 15 Mar 2022 17:08

Tgt Ion: 128 Resp: 3064709

Ion	Ratio	Lower	Upper
128	100		
127	13.3	10.2	15.4
129	11.4	8.7	13.1

