

Data Path : Z:\voasrv\HPCHEM1\MSVOA_X\Data\VX031524\
 Data File : VX040661.D
 Acq On : 15 Mar 2024 17:55
 Operator : JC/MD
 Sample : P1753-19
 Misc : 5.0mL/MSVOA_X/WATER
 ALS Vial : 23 Sample Multiplier: 1

Instrument :
 MSVOA_X
ClientSampleId :

Quant Time: Mar 16 02:55:15 2024
 Quant Method : Z:\voasrv\HPCHEM1\MSVOA_X\Method\SFAMXMLM030724WMA.M
 Quant Title : VOC Analysis
 QLast Update : Sat Mar 16 01:57:16 2024
 Response via : Initial Calibration

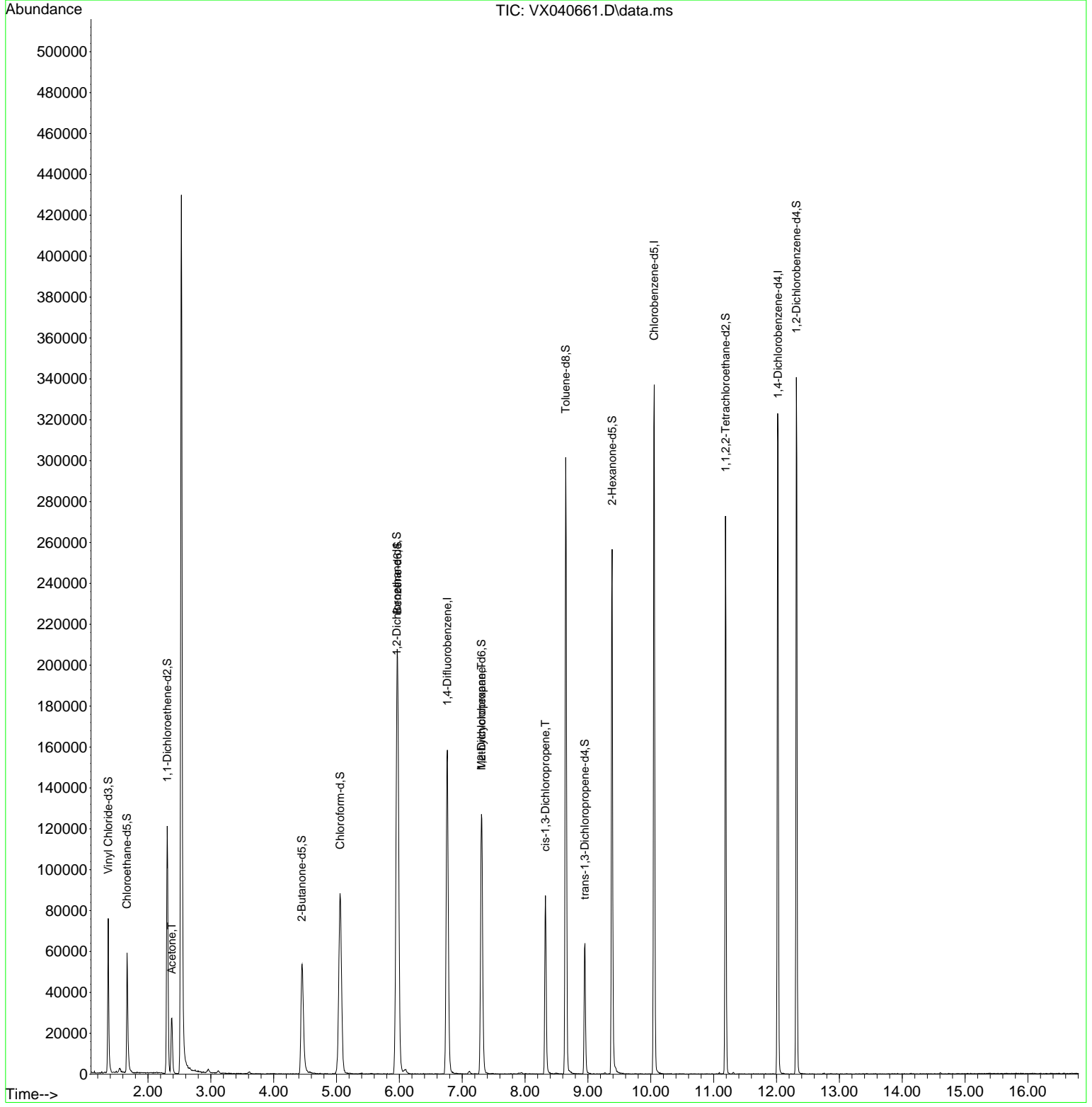
Compound	R.T.	QI on	Response	Conc	Units	Dev(Min)
Internal Standards						
1) 1,4-Difluorobenzene	6.763	114	146963	50.000	ug/L	0.00
28) Chlorobenzene-d5	10.055	117	139910	50.000	ug/L	0.00
58) 1,4-Dichlorobenzene-d4	12.024	152	62157	50.000	ug/L	0.00
System Monitoring Compounds						
4) Vinyl Chloride-d3	1.368	65	45924	35.648	ug/L	0.00
Spike Amount	50.000	Range	60 - 135	Recovery	=	71.300%
7) Chloroethane-d5	1.666	69	43061	41.868	ug/L	0.00
Spike Amount	50.000	Range	70 - 130	Recovery	=	83.740%
11) 1,1-Dichloroethane-d2	2.306	65	22086	37.243	ug/L	0.00
Spike Amount	50.000	Range	60 - 125	Recovery	=	74.480%
21) 2-Butanone-d5	4.446	46	94996	96.094	ug/L	0.00
Spike Amount	100.000	Range	40 - 130	Recovery	=	96.090%
24) Chloroform-d	5.056	84	108683	45.429	ug/L	0.00
Spike Amount	50.000	Range	70 - 125	Recovery	=	90.860%
26) 1,2-Dichloroethane-d4	5.958	65	81500	45.629	ug/L	0.00
Spike Amount	50.000	Range	70 - 125	Recovery	=	91.260%
32) Benzene-d6	5.970	84	186086	43.352	ug/L	0.00
Spike Amount	50.000	Range	70 - 125	Recovery	=	86.700%
36) 1,2-Dichloropropane-d6	7.306	67	62389	46.898	ug/L	0.00
Spike Amount	50.000	Range	70 - 120	Recovery	=	93.800%
41) Toluene-d8	8.647	98	167282	40.439	ug/L	0.00
Spike Amount	50.000	Range	80 - 120	Recovery	=	80.880%
43) trans-1,3-Dichloropropene	8.952	79	29608	41.817	ug/L	0.00
Spike Amount	50.000	Range	60 - 125	Recovery	=	83.640%
47) 2-Hexanone-d5	9.384	63	69459	94.626	ug/L	0.00
Spike Amount	100.000	Range	45 - 130	Recovery	=	94.630%
56) 1,1,2,2-Tetrachloroethane	11.189	84	94320	47.354	ug/L	0.00
Spike Amount	50.000	Range	65 - 120	Recovery	=	94.700%
66) 1,2-Dichlorobenzene-d4	12.317	152	62003	47.627	ug/L	0.00
Spike Amount	50.000	Range	80 - 120	Recovery	=	95.260%
Target Compounds						
13) Acetone	2.380	43	30704	43.493	ug/L	99
35) Methylcyclohexane	7.306	83	14925	9.205	ug/L #	19
39) cis-1,3-Dichloropropene	8.324	75	2356	1.406	ug/L #	43

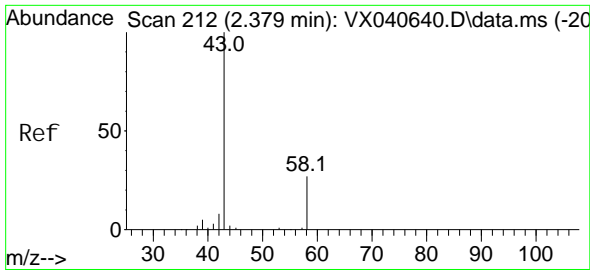
(#) = qualifier out of range (m) = manual integration (+) = signals summed

Data Path : Z:\voasrv\HPCHEM1\MSVOA_X\Data\VX031524\
 Data File : VX040661.D
 Acq On : 15 Mar 2024 17:55
 Operator : JC/MD
 Sample : P1753-19
 Misc : 5.0mL/MSVOA_X/WATER
 ALS Vial : 23 Sample Multiplier: 1

Instrument :
 MSVOA_X
 ClientSampleId :

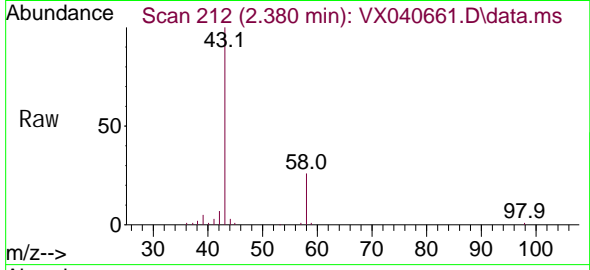
Quant Time: Mar 16 02:55:15 2024
 Quant Method : Z:\voasrv\HPCHEM1\MSVOA_X\Method\SFAMXLM030724WMA.M
 Quant Title : VOC Analysis
 QLast Update : Sat Mar 16 01:57:16 2024
 Response via : Initial Calibration



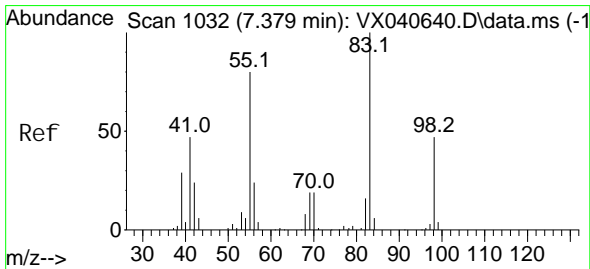
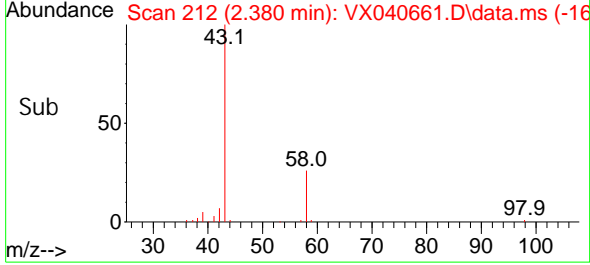
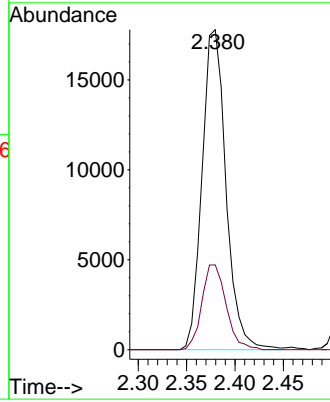


#13
 Acetone
 Concen: 43.493 ug/L
 RT: 2.380 min Scan# 212
 Delta R.T. 0.001 min
 Lab File: VX040661.D
 Acq: 15 Mar 2024 17:55

Instrument : MSVOA_X
 ClientSampleId :

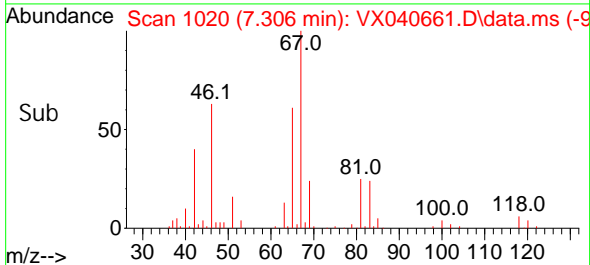
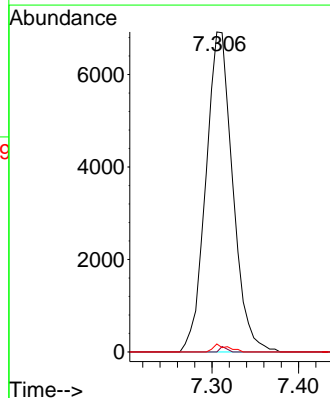
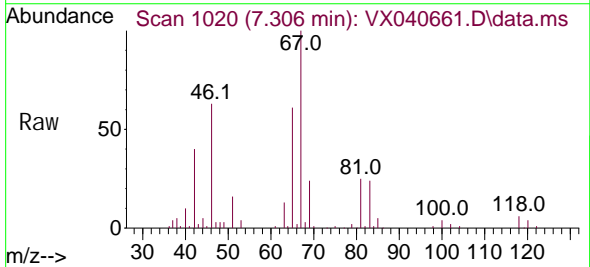


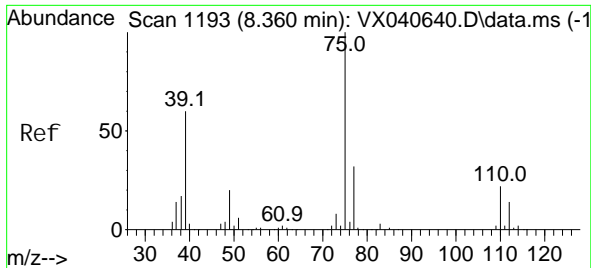
Tgt Ion: 43 Resp: 30704
 Ion Ratio Lower Upper
 43 100
 58 26.8 0.0 54.6



#35
 Methylcyclohexane
 Concen: 9.205 ug/L
 RT: 7.306 min Scan# 1020
 Delta R.T. -0.073 min
 Lab File: VX040661.D
 Acq: 15 Mar 2024 17:55

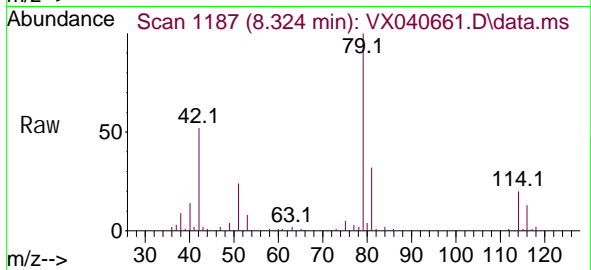
Tgt Ion: 83 Resp: 14925
 Ion Ratio Lower Upper
 83 100
 55 0.4 62.6 94.0#
 98 1.3 37.4 56.2#





#39
 ci s-1, 3-Di chl oroprene
 Concen: 1.406 ug/L
 RT: 8.324 min Scan# 1193
 Del ta R.T. -0.036 min
 Lab File: VX040661.D
 Acq: 15 Mar 2024 17:55

Instrument :
 MSVOA_X
 ClientSampleId :



Tgt Ion: 75 Resp: 2356
 Ion Ratio Lower Upper
 75 100
 77 61.1 21.1 39.3#

