

Data Path : Z:\VOASRV\HPCHEM1\MSVOA X\DATA\VX031619\
 Data File : VX008148.D
 Acq On : 16 Mar 2019 18:27
 Operator : JC/SP
 Sample : K1905-04
 Misc : 5.0mL/MSVOA X/WATER
 ALS Vial : 16 Sample Multiplier: 1

Instrument :
 MSVOA_X
 ClientSampled :
 RBR-200052

Quant Time: Mar 18 01:16:08 2019
 Quant Method : Z:\VOASRV\HPCHEM1\MSVOA_X\METHOD\82X031419W.M
 Quant Title : SW846 8260
 QLast Update : Fri Mar 15 03:56:35 2019
 Response via : Initial Calibration

Internal Standards	R.T.	QIon	Response	Conc	Units	Dev(Min)
1) Pentafluorobenzene	5.67	168	315237	50.00	ug/l	0.00
34) 1,4-Difluorobenzene	6.86	114	428180	50.00	ug/l	0.00
63) Chlorobenzene-d5	10.11	117	372793	50.00	ug/l	0.00
72) 1,4-Dichlorobenzene-d4	12.08	152	172892	50.00	ug/l	0.00

System Monitoring Compounds

33) 1,2-Dichloroethane-d4	6.07	65	139611	43.90	ug/l	0.00
Spiked Amount	50.000		Recovery	=	87.80%	
35) Dibromofluoromethane	5.51	113	130293	47.99	ug/l	0.00
Spiked Amount	50.000		Recovery	=	95.98%	
50) Toluene-d8	8.71	98	498685	48.29	ug/l	0.00
Spiked Amount	50.000		Recovery	=	96.58%	
62) 4-Bromofluorobenzene	11.13	95	163660	44.24	ug/l	0.00
Spiked Amount	50.000		Recovery	=	88.48%	

Target Compounds

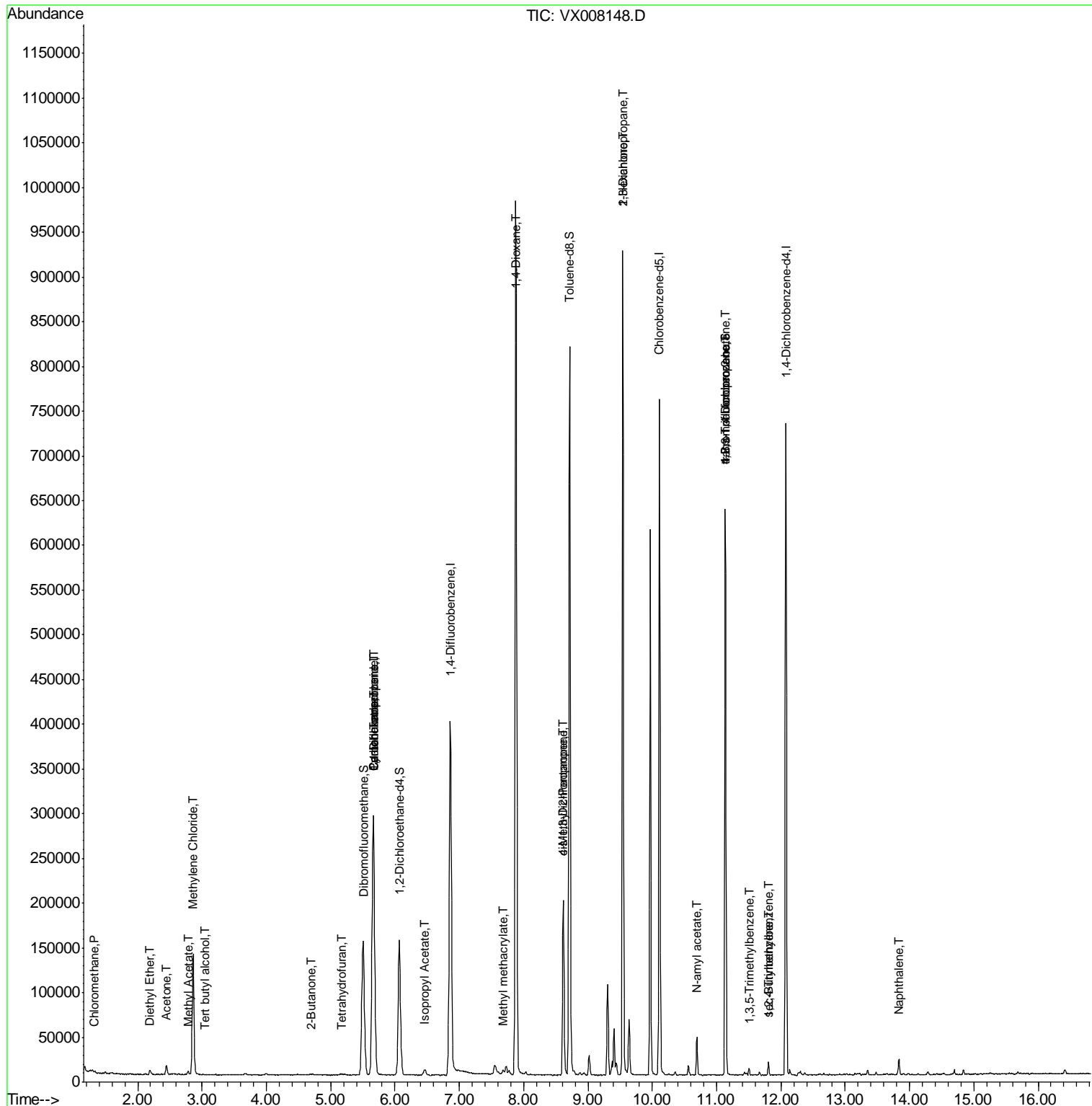
					Qvalue	
3) Chloromethane	1.33	50	1080	0.364	ug/l #	78
5) Bromomethane	1.65	94	21	Below Cal	#	2
6) Chloroethane	1.72	64	172	Below Cal	#	43
8) Diethyl Ether	2.19	74	1689	0.999	ug/l	86
11) Tert butyl alcohol	3.06	59	325	0.529	ug/l #	73
16) Acetone	2.45	43	10815	7.204	ug/l	91
18) Methyl Acetate	2.78	43	4688	1.445	ug/l	100
20) Methylene Chloride	2.86	84	66186	24.685	ug/l	89
25) 2-Butanone	4.70	43	1939	0.841	ug/l #	72
29) Tetrahydrofuran	5.17	42	1060	0.737	ug/l	94
31) Cyclohexane	5.66	56	4228	0.930	ug/l #	1
36) 1,1-Dichloropropene	5.66	75	17767	5.044	ug/l #	49
38) Carbon Tetrachloride	5.66	117	25702	7.580	ug/l #	17
43) Isopropyl Acetate	6.46	43	8341	1.368	ug/l #	96
48) Methyl methacrylate	7.68	41	5665	1.779	ug/l #	16
49) 1,4-Dioxane	7.88	88	133	1.937	ug/l #	1
51) 4-Methyl-2-Pentanone	8.62	43	60995	15.179	ug/l #	50
54) cis-1,3-Dichloropropene	8.62	75	32651	7.897	ug/l #	58
57) 1,3-Dichloropropane	9.54	76	7542	1.632	ug/l #	43
59) 2-Hexanone	9.54	43	98626	31.384	ug/l #	52
74) N-amyl acetate	10.69	43	9425	2.018	ug/l #	54
76) 1,2,3-Trichloropropane	11.13	75	72629	24.188	ug/l #	40
80) 1,3,5-Trimethylbenzene	11.51	105	3383	0.371	ug/l	99
81) trans-1,4-Dichloro-2-buten	11.13	75	72629	68.832	ug/l #	11
84) 1,2,4-Trimethylbenzene	11.80	105	6780	0.720	ug/l	96
85) sec-Butylbenzene	11.80	105	6780	0.622	ug/l #	55
95) Naphthalene	13.83	128	11246	1.058	ug/l	99

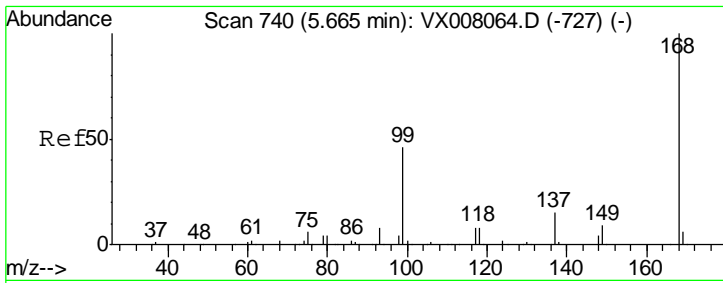
(#) = qualifier out of range (m) = manual integration (+) = signals summed

Data Path : Z:\VOASRV\HPCHEM1\MSVOA X\DATA\VX031619\
 Data File : VX008148.D
 Acq On : 16 Mar 2019 18:27
 Operator : JC/SP
 Sample : K1905-04
 Misc : 5.0mL/MSVOA X/WATER
 ALS Vial : 16 Sample Multiplier: 1

Instrument :
 MSVOA_X
 Client Sampled :
 RBR-200052

Quant Time: Mar 18 01:16:08 2019
 Quant Method : Z:\VOASRV\HPCHEM1\MSVOA_X\METHOD\82X031419W.M
 Quant Title : SW846 8260
 QLast Update : Fri Mar 15 03:56:35 2019
 Response via : Initial Calibration

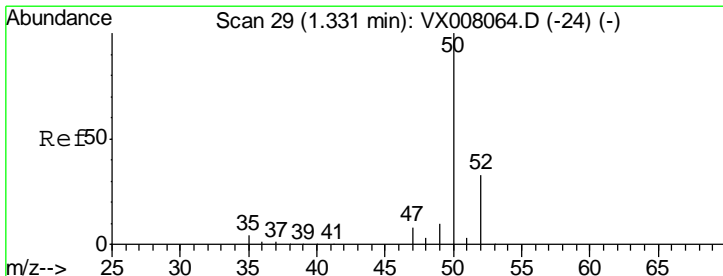
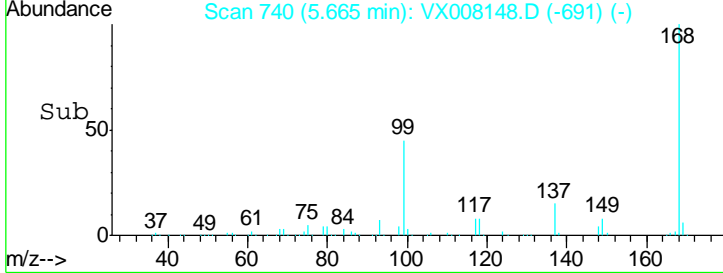
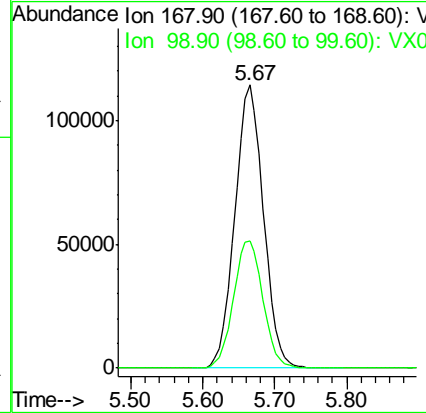
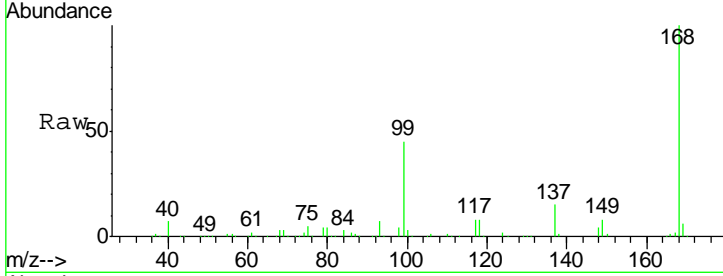




#1
 Pentafluorobenzene
 Concen: 50.000 ug/l
 RT: 5.67 min Scan# 740
 Delta R.T. 0.00 min
 Lab File: VX008148.D
 Acq: 16 Mar 2019 18:27

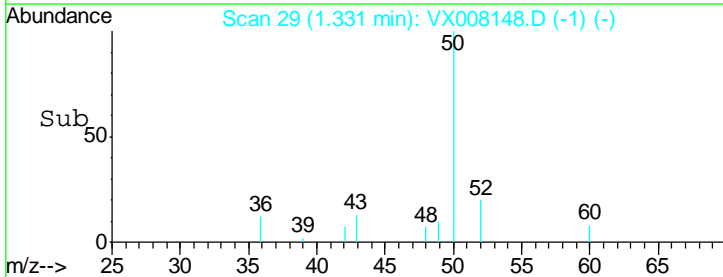
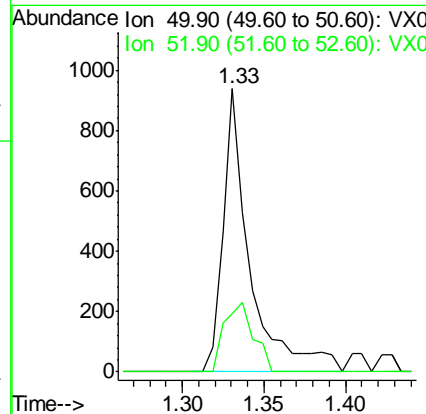
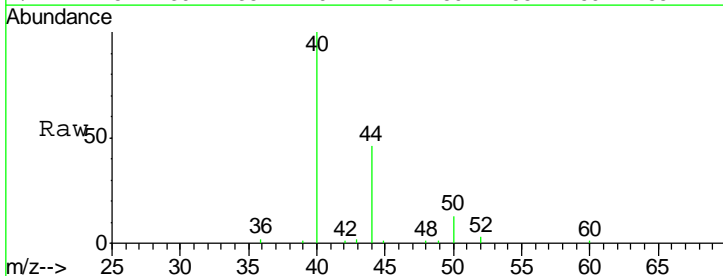
Instrument :
 MSVOA_X
 ClientSampled :
 RBR-200052

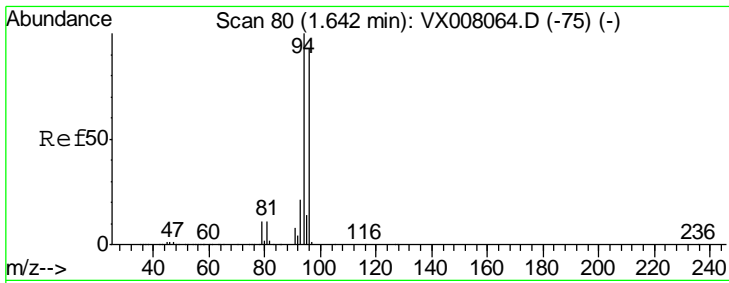
Tgt Ion: 168 Resp: 315237
 Ion Ratio Lower Upper
 168 100
 99 45.1 37.6 56.4



#3
 Chloromethane
 Concen: 0.364 ug/l
 RT: 1.33 min Scan# 29
 Delta R.T. 0.00 min
 Lab File: VX008148.D
 Acq: 16 Mar 2019 18:27

Tgt Ion: 50 Resp: 1080
 Ion Ratio Lower Upper
 50 100
 52 20.5 26.5 39.7#

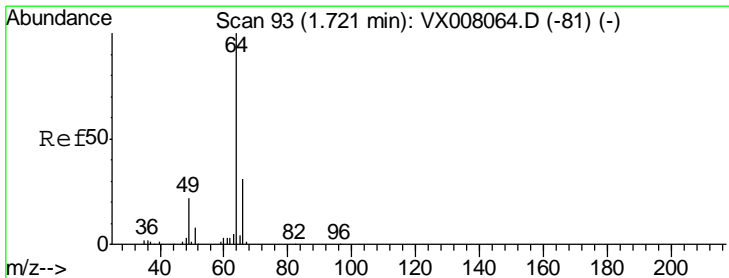
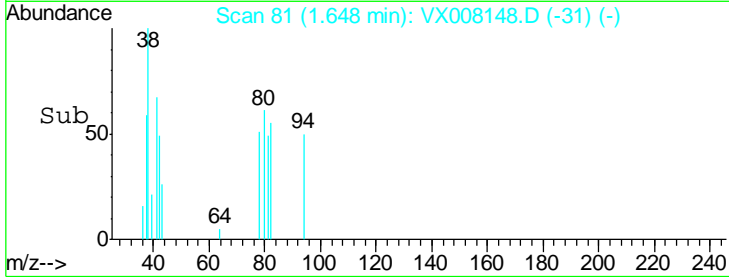
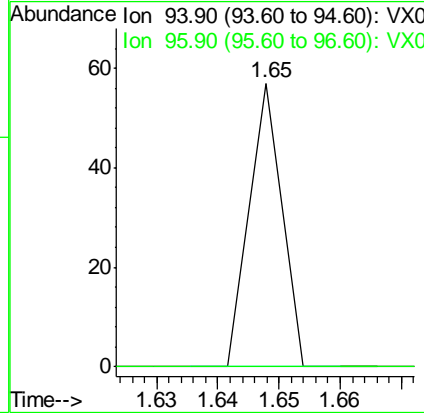
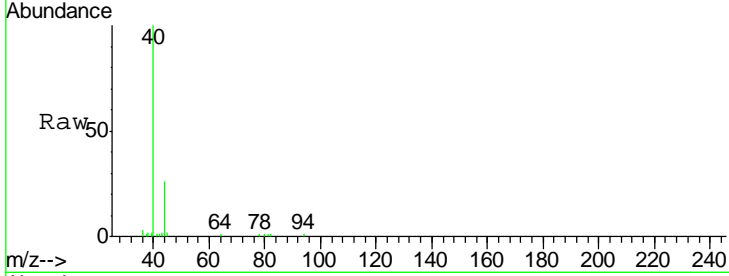




#5
 Bromomethane
 Concen: Below Cal
 RT: 1.65 min Scan# 81
 Delta R.T. 0.01 min
 Lab File: VX008148.D
 Acq: 16 Mar 2019 18:27

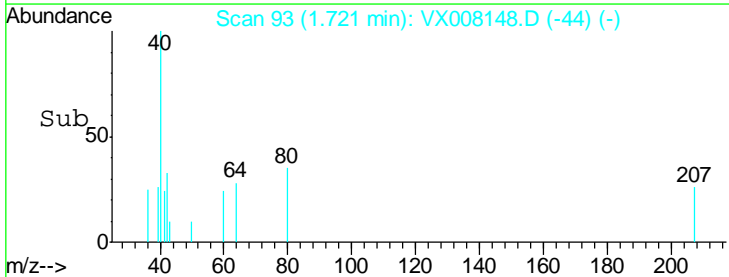
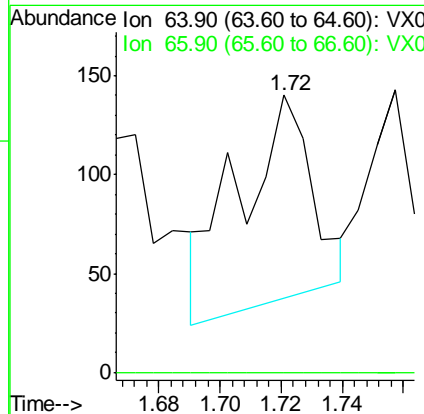
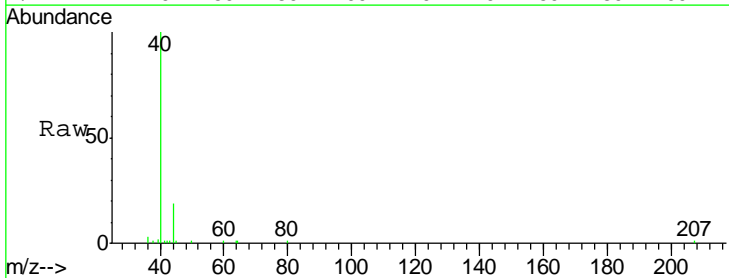
Instrument :
 MSVOA_X
 ClientSampled :
 RBR-200052

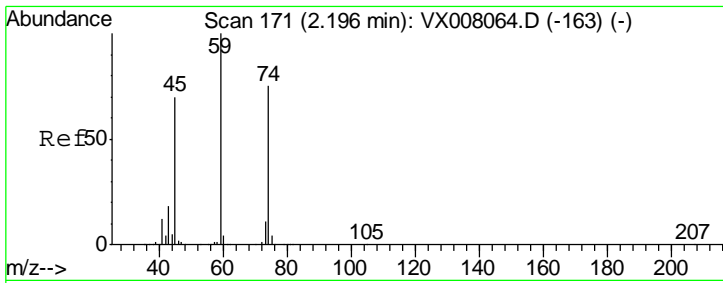
Tgt Ion: 94 Resp: 21
 Ion Ratio Lower Upper
 94 100
 96 0.0 75.5 113.3#



#6
 Chloroethane
 Concen: Below Cal
 RT: 1.72 min Scan# 93
 Delta R.T. 0.00 min
 Lab File: VX008148.D
 Acq: 16 Mar 2019 18:27

Tgt Ion: 64 Resp: 172
 Ion Ratio Lower Upper
 64 100
 66 0.0 25.2 37.8#

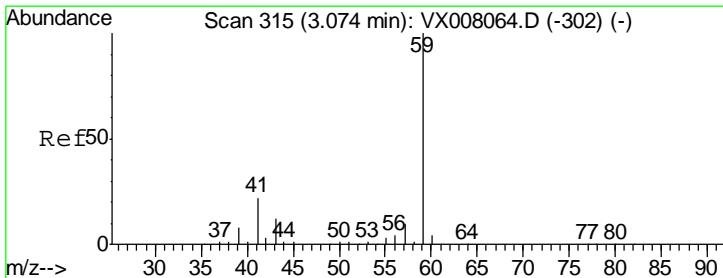
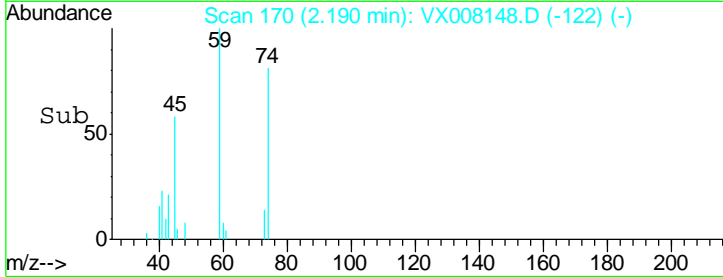
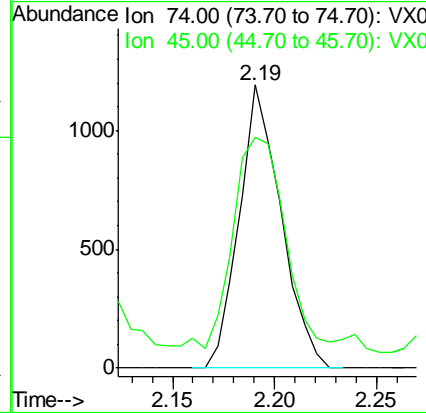
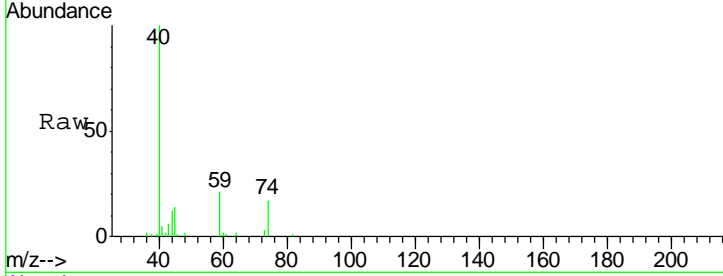




#8
 Diethyl Ether
 Concen: 0.999 ug/l
 RT: 2.19 min Scan# 170
 Delta R.T. -0.01 min
 Lab File: VX008148.D
 Acq: 16 Mar 2019 18:27

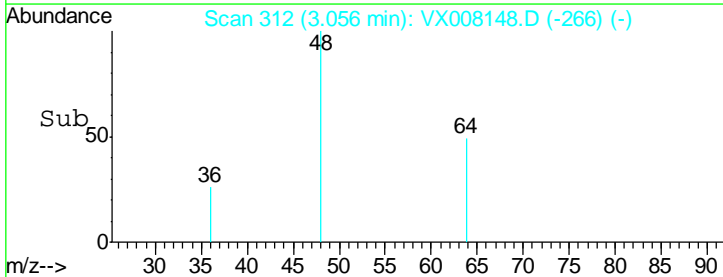
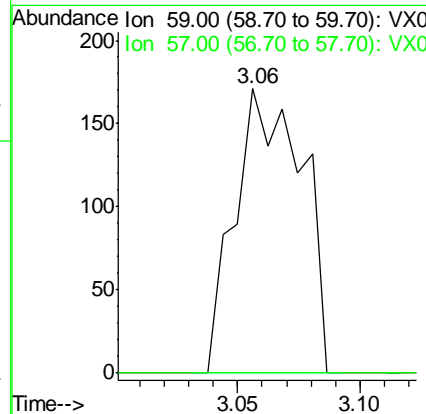
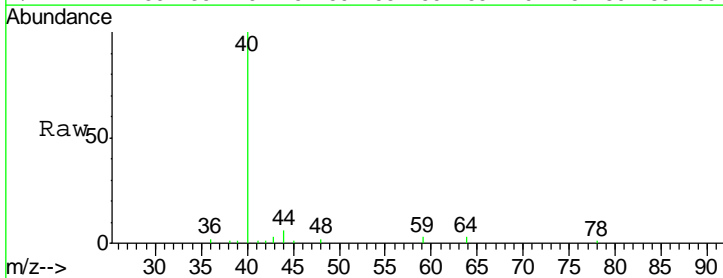
Instrument :
 MSVOA_X
 ClientSampled :
 RBR-200052

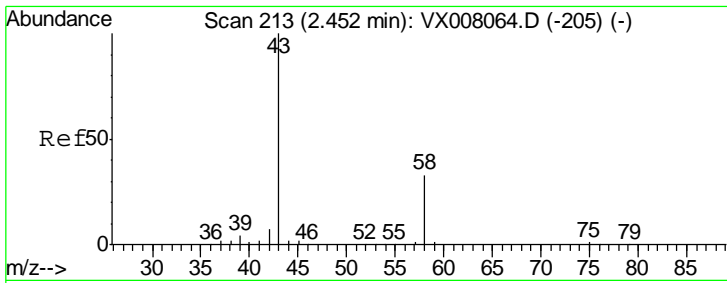
Tgt Ion: 74 Resp: 1689
 Ion Ratio Lower Upper
 74 100
 45 90.5 52.1 156.4



#11
 Tert butyl alcohol
 Concen: 0.529 ug/l
 RT: 3.06 min Scan# 312
 Delta R.T. -0.02 min
 Lab File: VX008148.D
 Acq: 16 Mar 2019 18:27

Tgt Ion: 59 Resp: 325
 Ion Ratio Lower Upper
 59 100
 57 0.0 8.2 12.2#

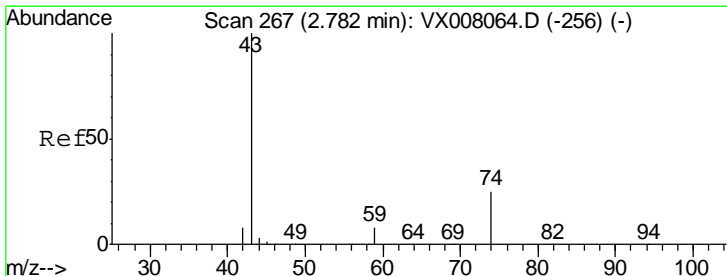
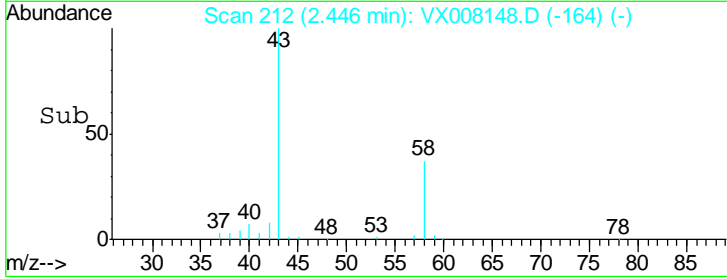
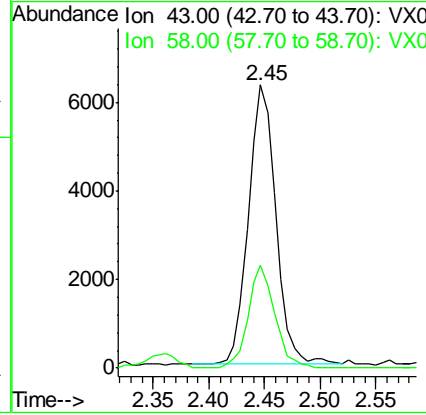
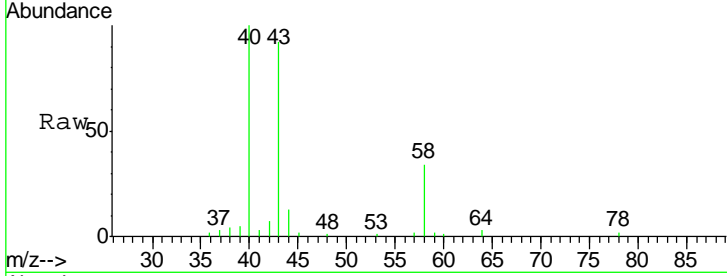




#16
 Acetone
 Concen: 7.204 ug/l
 RT: 2.45 min Scan# 212
 Delta R.T. -0.01 min
 Lab File: VX008148.D
 Acq: 16 Mar 2019 18:27

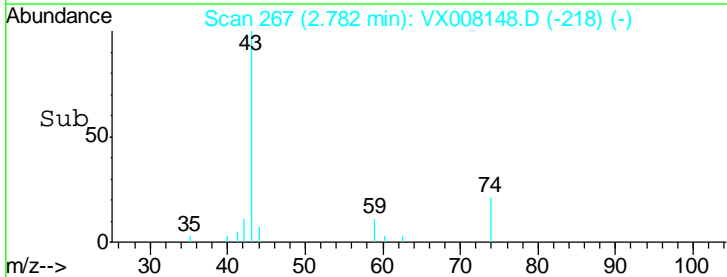
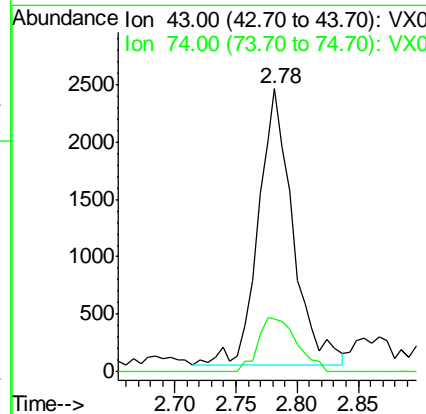
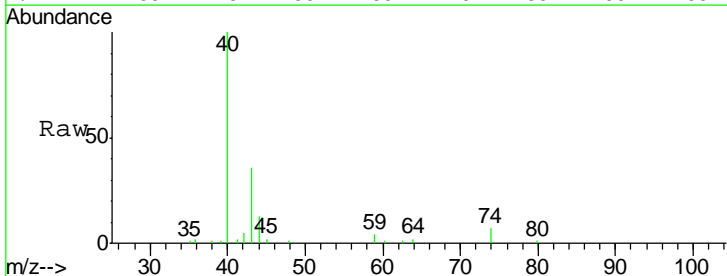
Instrument :
 MSVOA_X
ClientSampled :
 RBR-200052

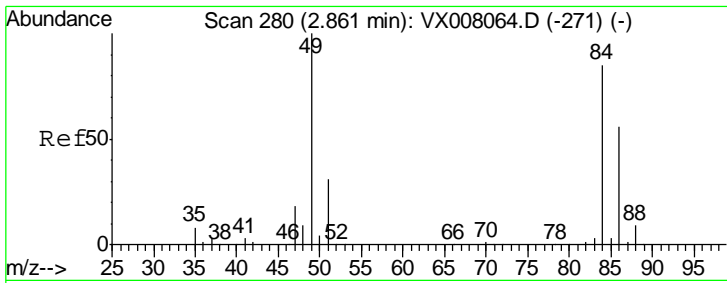
Tgt Ion	Resp	Lower	Upper
43	10815		
58	36.8	25.5	38.3



#18
 Methyl Acetate
 Concen: 1.445 ug/l
 RT: 2.78 min Scan# 267
 Delta R.T. 0.00 min
 Lab File: VX008148.D
 Acq: 16 Mar 2019 18:27

Tgt Ion	Resp	Lower	Upper
43	4688		
74	22.4	17.8	26.6

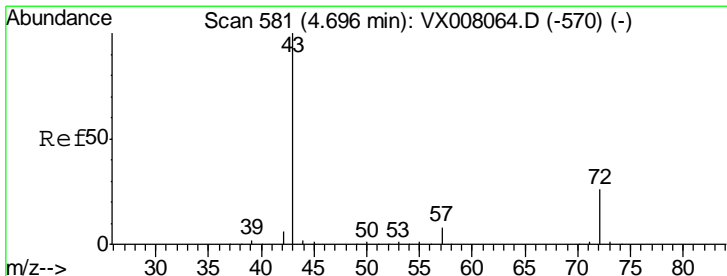
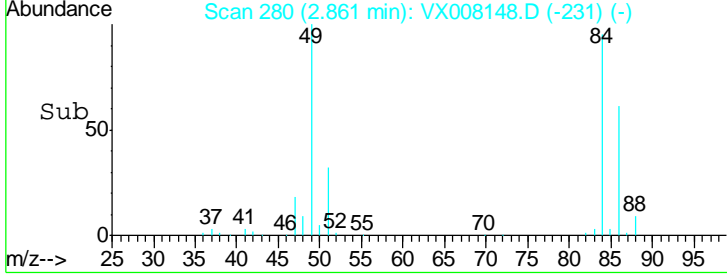
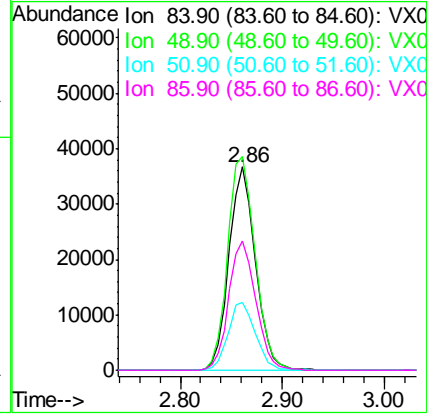
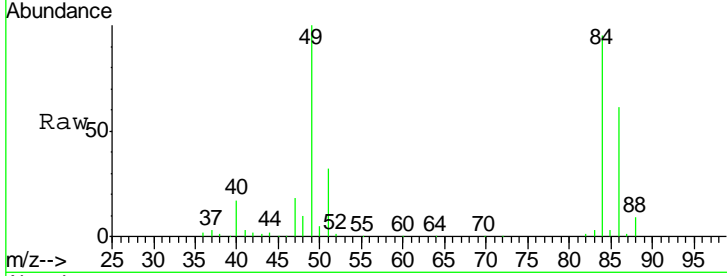




#20
 Methylene Chloride
 Concen: 24.685 ug/l
 RT: 2.86 min Scan# 280
 Delta R.T. 0.00 min
 Lab File: VX008148.D
 Acq: 16 Mar 2019 18:27

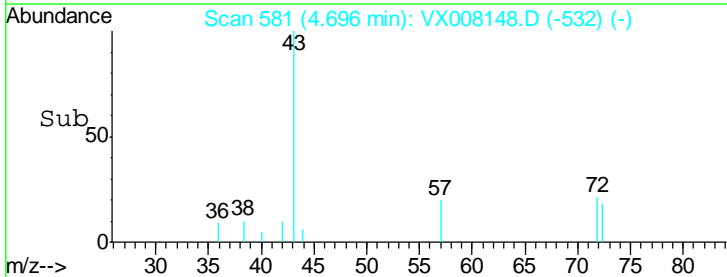
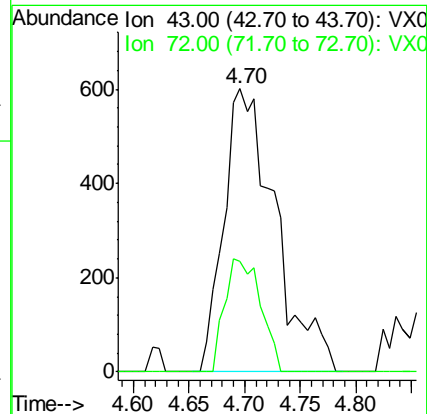
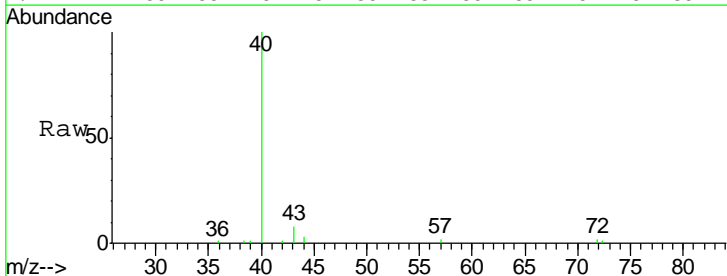
Instrument : MSVOA_X
 ClientSampleId : RBR-200052

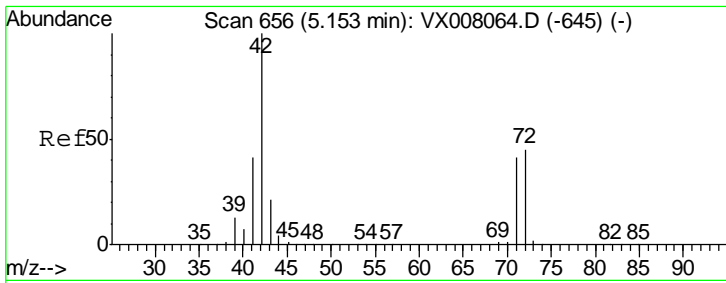
Tgt Ion	Resp	Lower	Upper
84	66186		
49	105.2	99.3	148.9
51	33.6	31.3	46.9
86	63.9	52.6	79.0



#25
 2-Butanone
 Concen: 0.841 ug/l
 RT: 4.70 min Scan# 581
 Delta R.T. 0.00 min
 Lab File: VX008148.D
 Acq: 16 Mar 2019 18:27

Tgt Ion	Resp	Lower	Upper
43	1939		
43	100		
72	39.1	19.9	29.9#

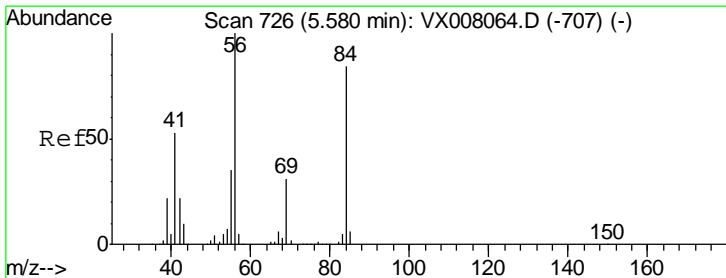
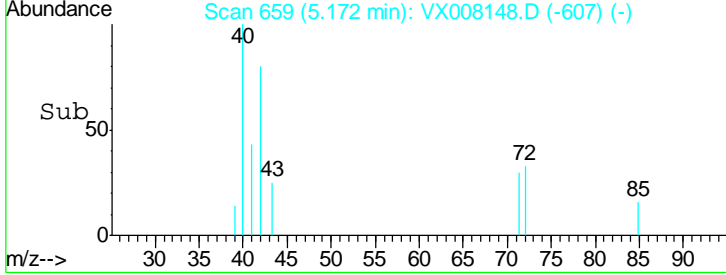
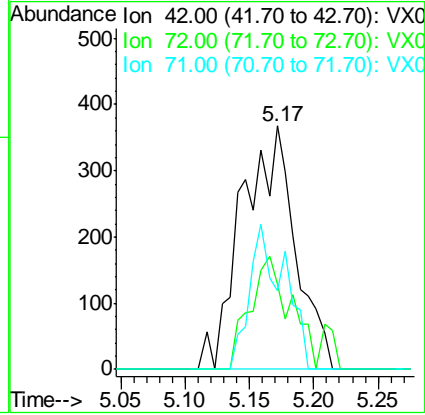
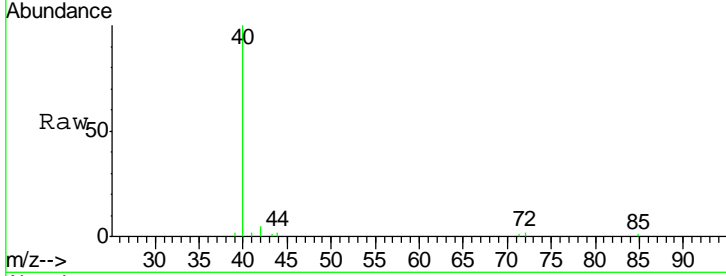




#29
 Tetrahydrofuran
 Concen: 0.737 ug/l
 RT: 5.17 min Scan# 659
 Delta R.T. 0.02 min
 Lab File: VX008148.D
 Acq: 16 Mar 2019 18:27

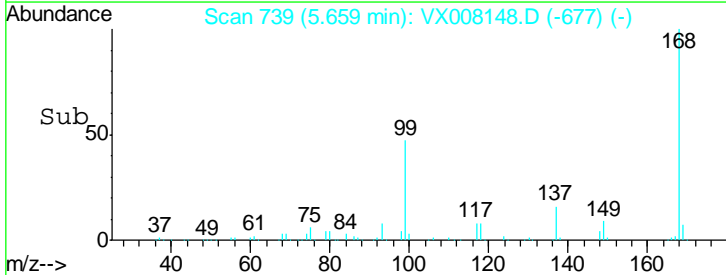
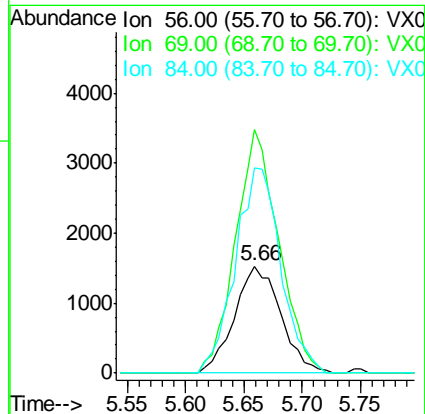
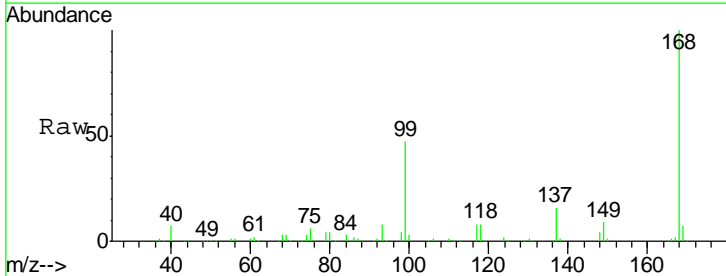
Instrument :
 MSVOA_X
 ClientSampled :
 RBR-200052

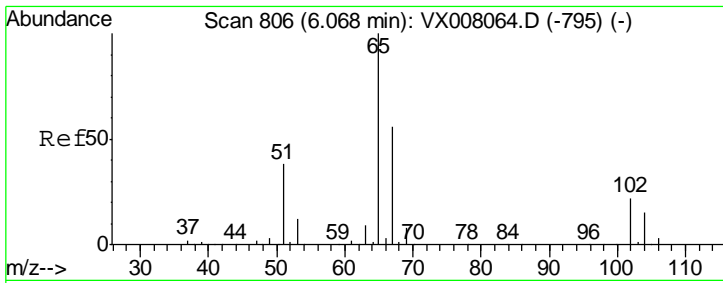
Tgt Ion	Resp	Lower	Upper
42	1060		
72	35.3	33.8	50.6
71	38.7	31.5	47.3



#31
 Cyclohexane
 Concen: 0.930 ug/l
 RT: 5.66 min Scan# 739
 Delta R.T. 0.08 min
 Lab File: VX008148.D
 Acq: 16 Mar 2019 18:27

Tgt Ion	Resp	Lower	Upper
56	4228		
69	227.2	24.0	36.0#
84	191.0	65.3	97.9#

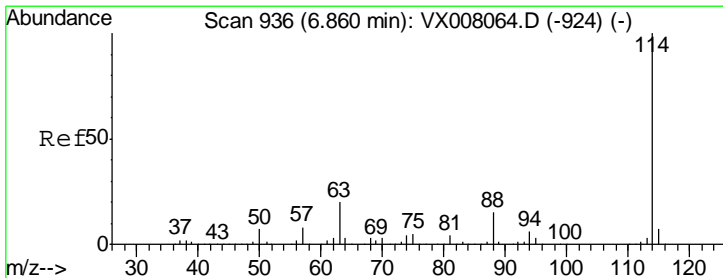
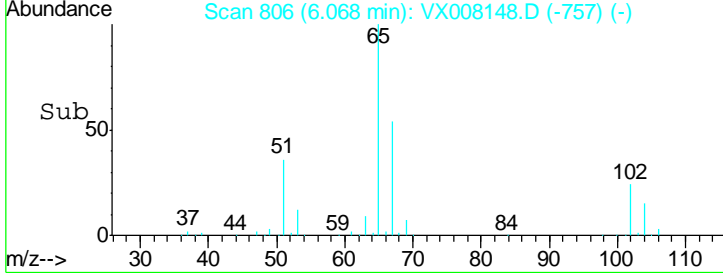
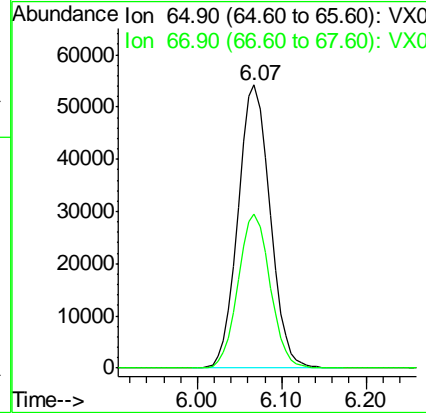
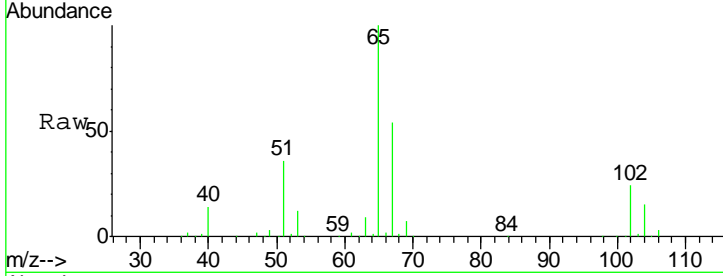




#33
 1,2-Dichloroethane-d4
 Concen: 43.904 ug/l
 RT: 6.07 min Scan# 806
 Delta R.T. 0.00 min
 Lab File: VX008148.D
 Acq: 16 Mar 2019 18:27

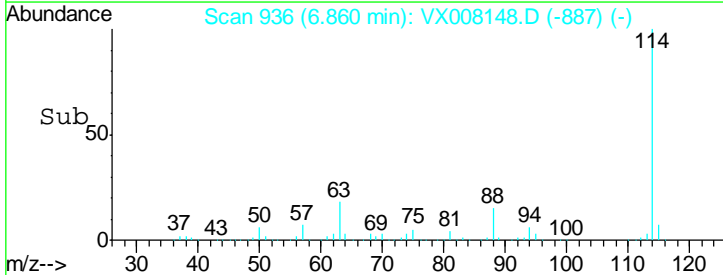
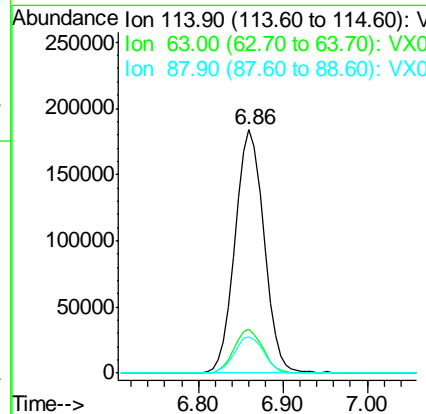
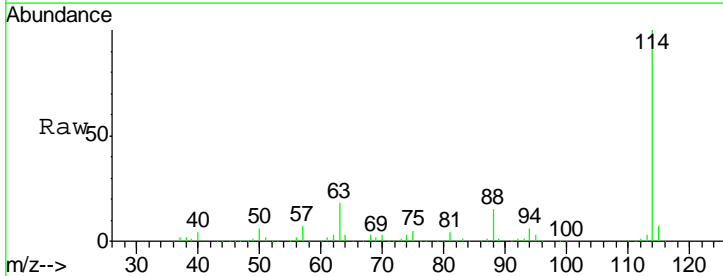
Instrument :
 MSVOA_X
 ClientSampled :
 RBR-200052

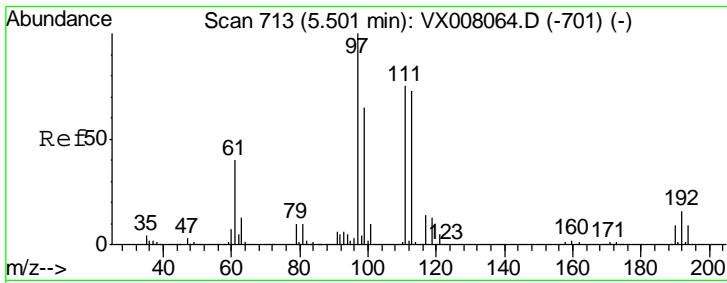
Tgt Ion	Resp	Lower	Upper
65	139611		
67	54.3	0.0	110.0



#34
 1,4-Difluorobenzene
 Concen: 50.000 ug/l
 RT: 6.86 min Scan# 936
 Delta R.T. 0.00 min
 Lab File: VX008148.D
 Acq: 16 Mar 2019 18:27

Tgt Ion	Resp	Lower	Upper
114	428180		
63	18.0	0.0	39.8
88	14.8	0.0	31.4

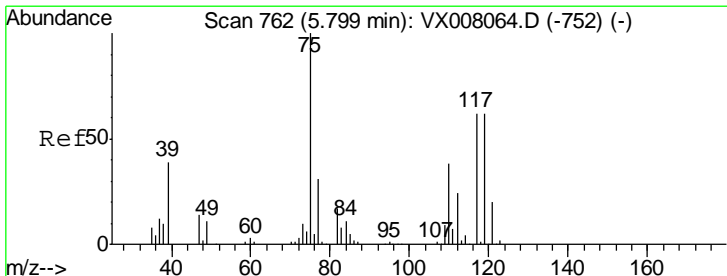
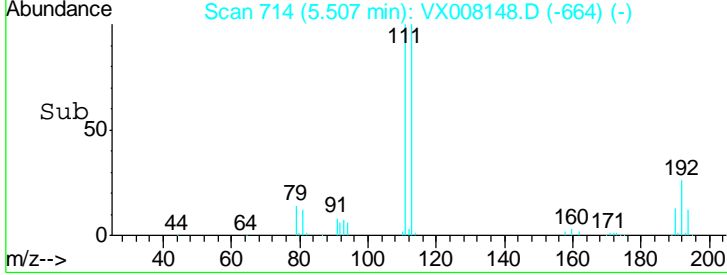
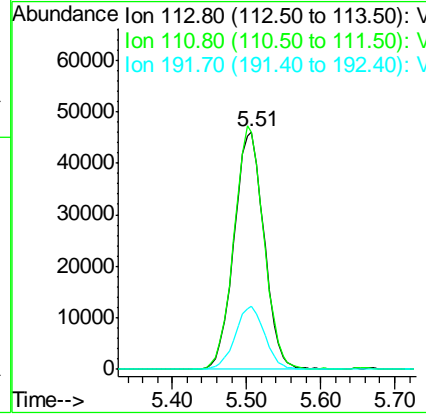
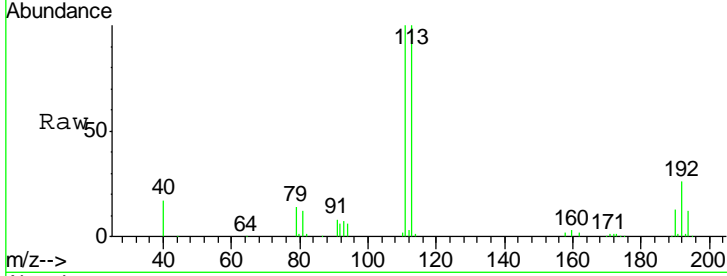




#35
 Dibromofluoromethane
 Concen: 47.985 ug/l
 RT: 5.51 min Scan# 714
 Delta R.T. 0.01 min
 Lab File: VX008148.D
 Acq: 16 Mar 2019 18:27

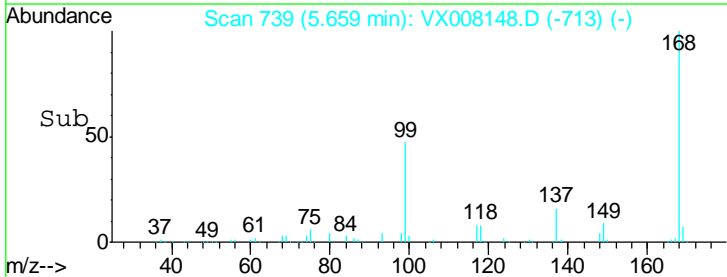
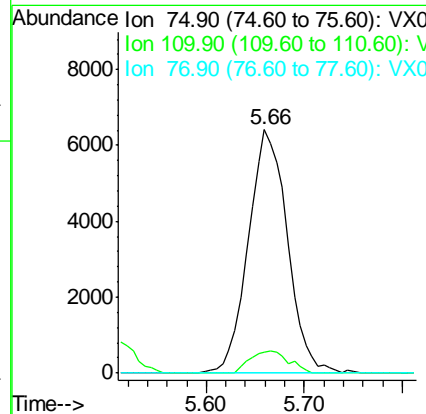
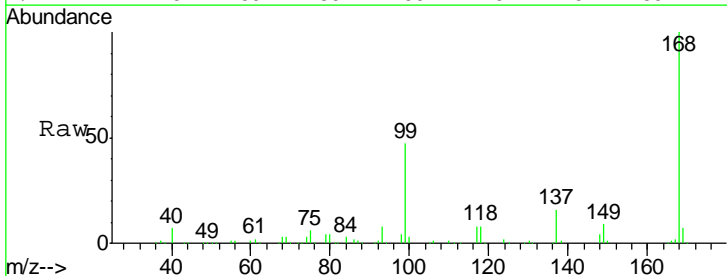
Instrument :
 MSVOA_X
ClientSampled :
 RBR-200052

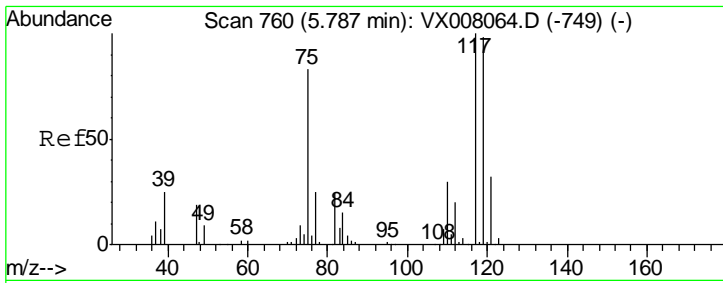
Tgt Ion	Resp	Lower	Upper
113	100		
111	101.3	81.4	122.0
192	26.1	19.4	29.0



#36
 1,1-Dichloropropene
 Concen: 5.044 ug/l
 RT: 5.66 min Scan# 739
 Delta R.T. -0.14 min
 Lab File: VX008148.D
 Acq: 16 Mar 2019 18:27

Tgt Ion	Resp	Lower	Upper
75	100		
110	9.1	18.4	55.0#
77	0.0	25.0	37.4#

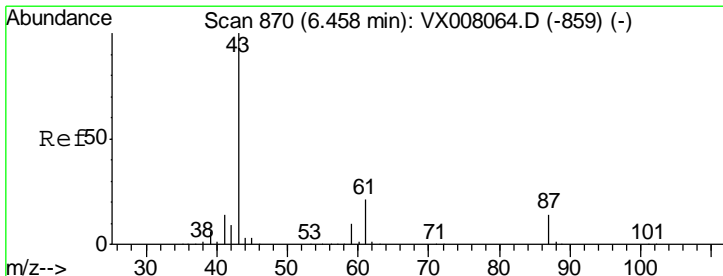
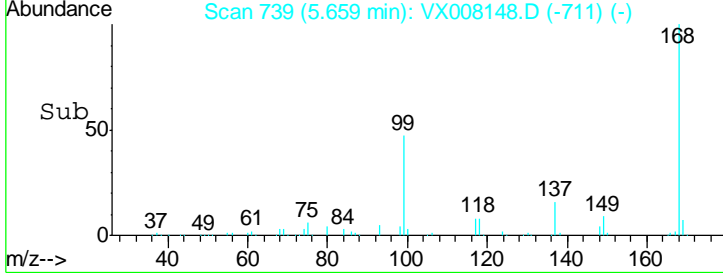
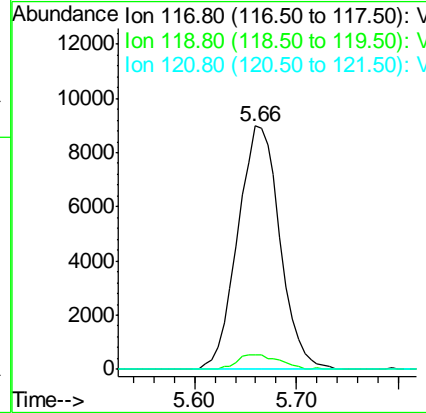
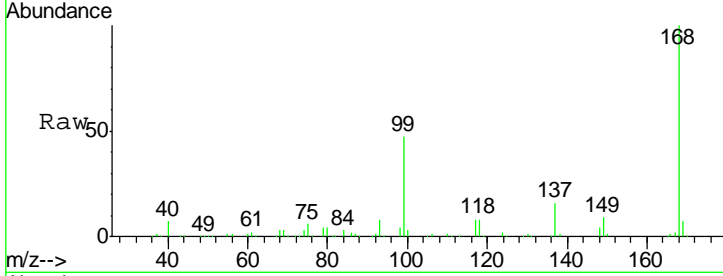




#38
 Carbon Tetrachloride
 Concen: 7.580 ug/l
 RT: 5.66 min Scan# 739
 Delta R.T. -0.13 min
 Lab File: VX008148.D
 Acq: 16 Mar 2019 18:27

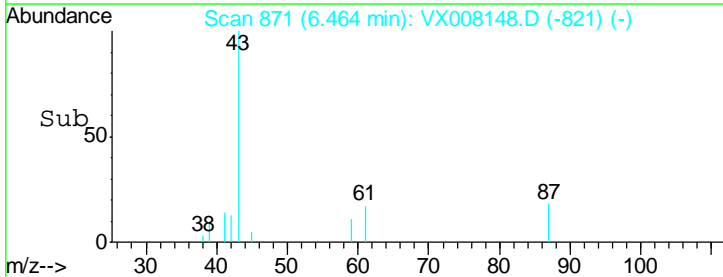
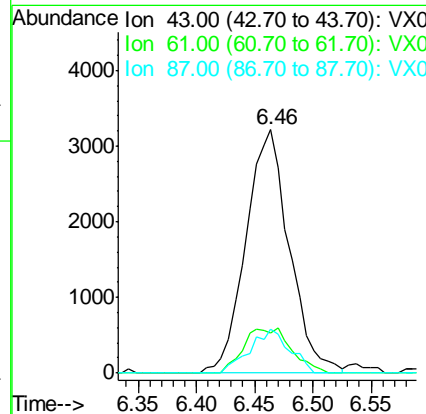
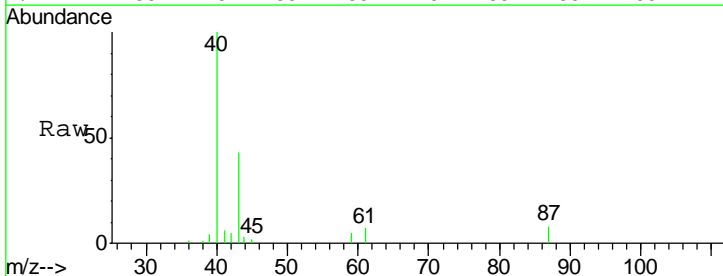
Instrument :
 MSVOA_X
 ClientSampled :
 RBR-200052

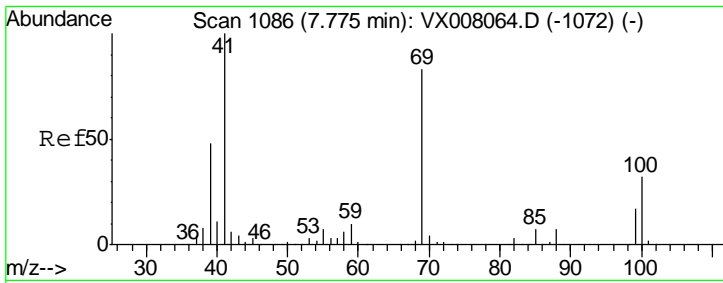
Tgt Ion	Resp	Lower	Upper
117	25702		
119	5.8	76.2	114.2#
121	0.0	24.6	36.8#



#43
 Isopropyl Acetate
 Concen: 1.368 ug/l
 RT: 6.46 min Scan# 871
 Delta R.T. 0.01 min
 Lab File: VX008148.D
 Acq: 16 Mar 2019 18:27

Tgt Ion	Resp	Lower	Upper
43	8341		
61	20.2	16.3	24.5
87	16.5	10.5	15.7#

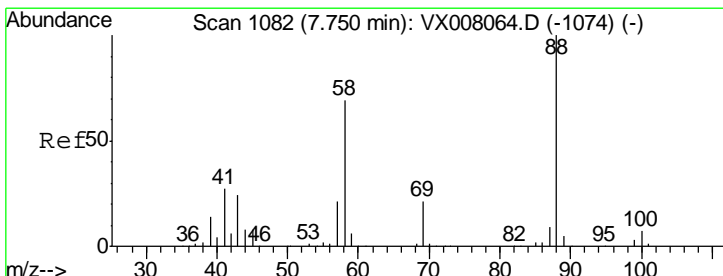
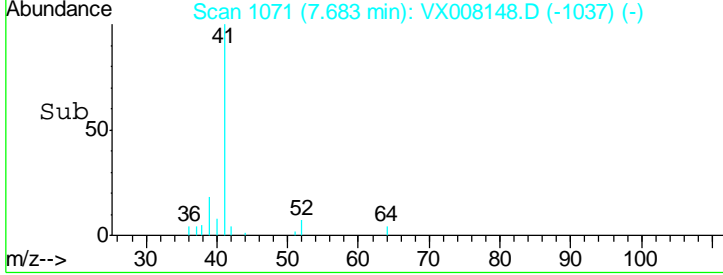
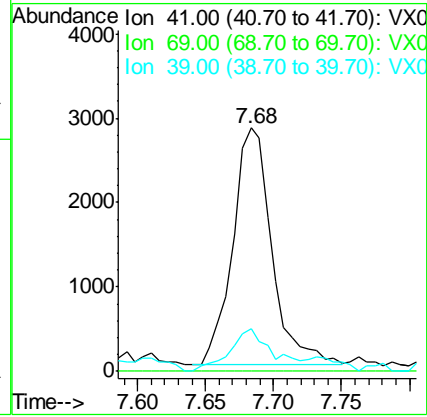
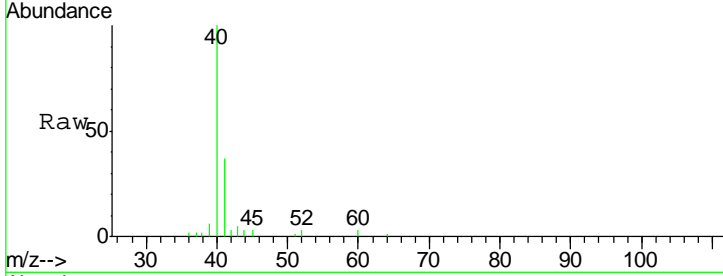




#48
 Methyl methacrylate
 Concen: 1.779 ug/l
 RT: 7.68 min Scan# 1071
 Delta R.T. -0.09 min
 Lab File: VX008148.D
 Acq: 16 Mar 2019 18:27

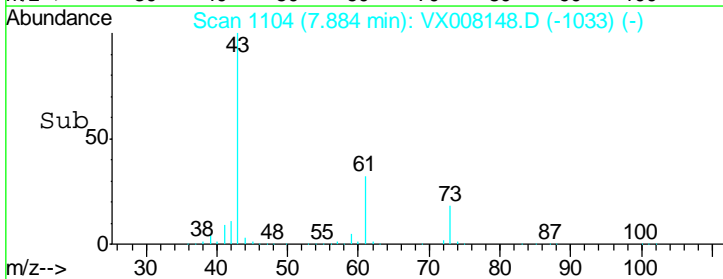
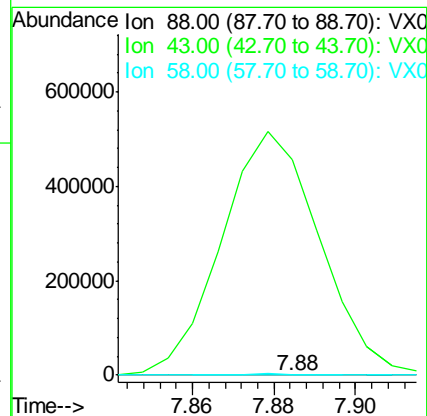
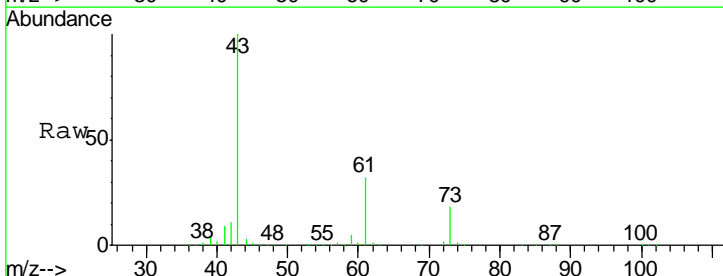
Instrument :
 MSVOA_X
ClientSampled :
 RBR-200052

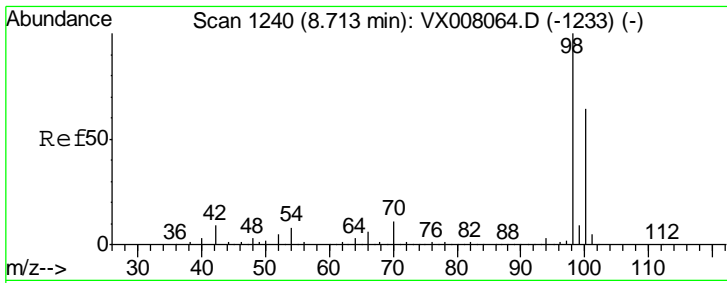
Tgt Ion	Resp	Lower	Upper
41	100		
69	0.0	65.2	97.8#
39	0.0	39.4	59.2#



#49
 1,4-Dioxane
 Concen: 1.937 ug/l
 RT: 7.88 min Scan# 1104
 Delta R.T. 0.13 min
 Lab File: VX008148.D
 Acq: 16 Mar 2019 18:27

Tgt Ion	Resp	Lower	Upper
88	100		
43	658433.1	25.1	37.7#
58	3094.7	57.8	86.6#

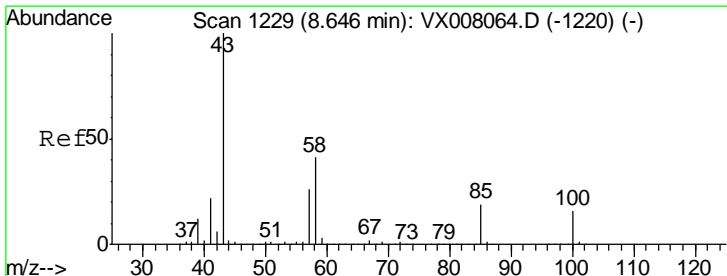
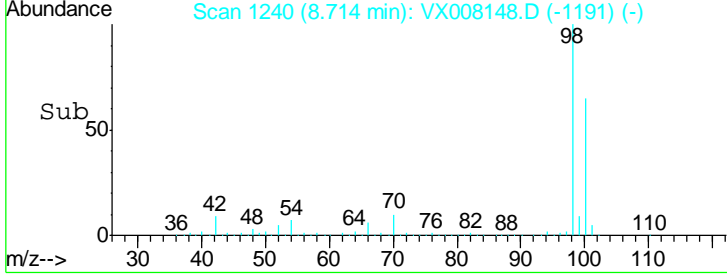
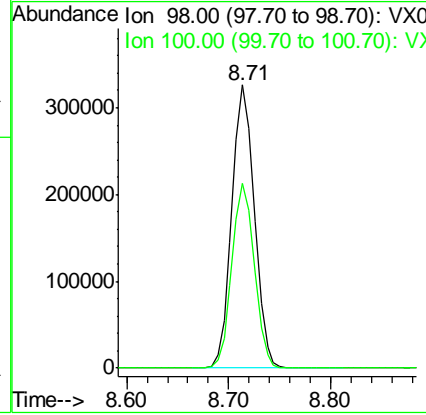
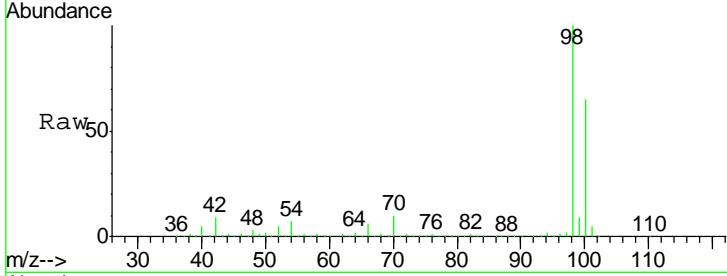




#50
 Toluene-d8
 Concen: 48.289 ug/l
 RT: 8.71 min Scan# 1240
 Delta R.T. 0.00 min
 Lab File: VX008148.D
 Acq: 16 Mar 2019 18:27

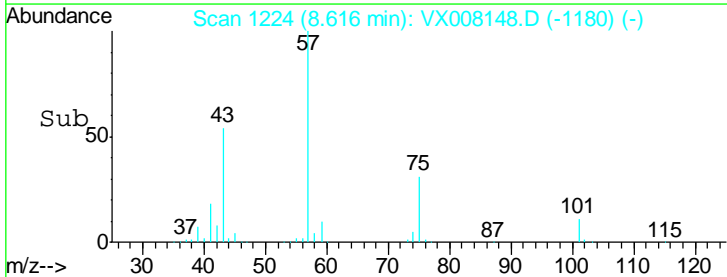
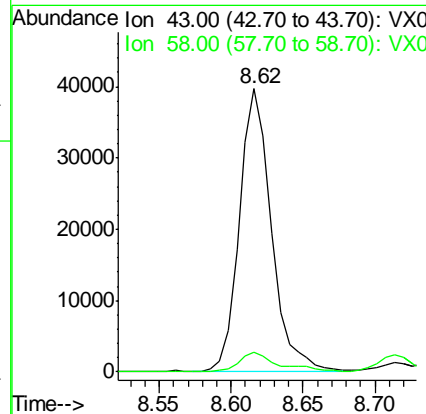
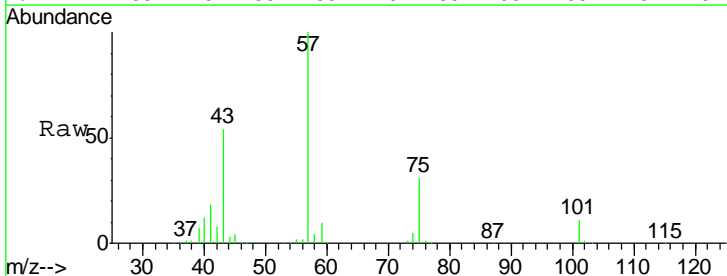
Instrument :
 MSVOA_X
ClientSampled :
 RBR-200052

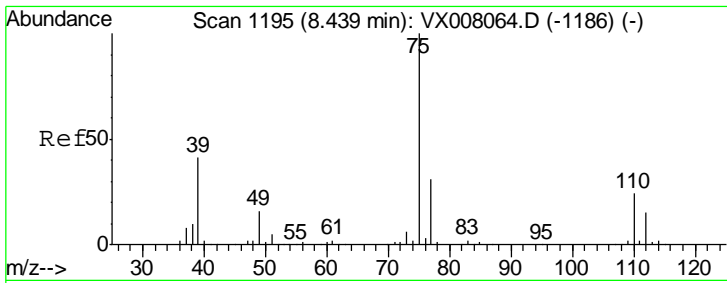
Tgt Ion: 98 Resp: 498685
 Ion Ratio Lower Upper
 98 100
 100 65.1 51.7 77.5



#51
 4-Methyl-2-Pentanone
 Concen: 15.179 ug/l
 RT: 8.62 min Scan# 1224
 Delta R.T. -0.03 min
 Lab File: VX008148.D
 Acq: 16 Mar 2019 18:27

Tgt Ion: 43 Resp: 60995
 Ion Ratio Lower Upper
 43 100
 58 8.5 31.3 46.9#

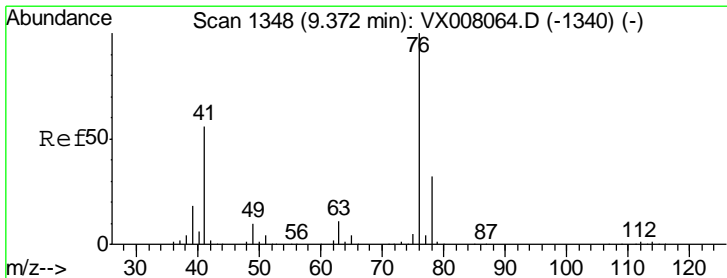
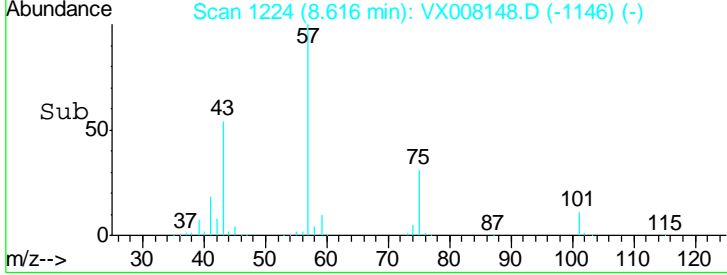
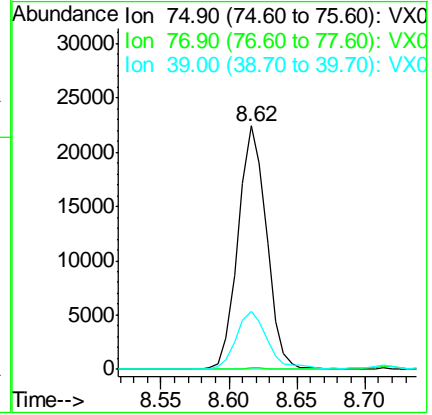
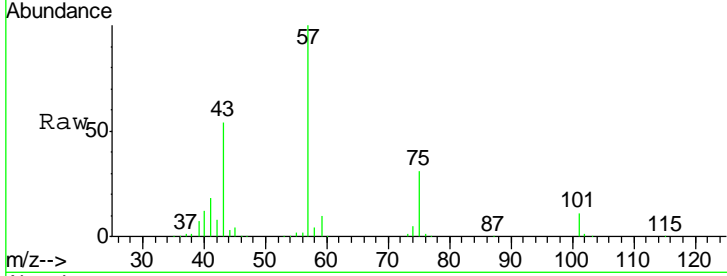




#54
 cis-1,3-Dichloropropene
 Concen: 7.897 ug/l
 RT: 8.62 min Scan# 1224
 Delta R.T. 0.18 min
 Lab File: VX008148.D
 Acq: 16 Mar 2019 18:27

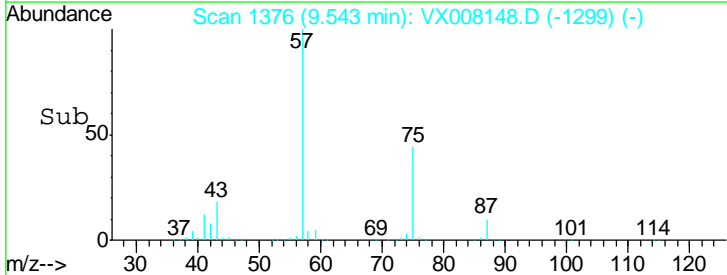
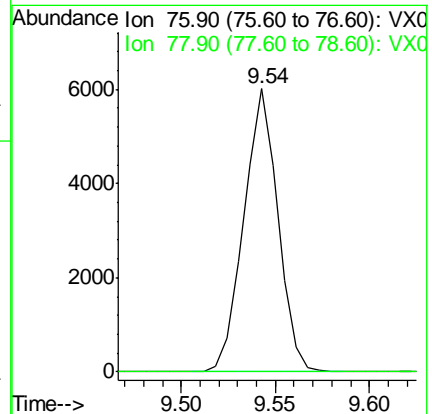
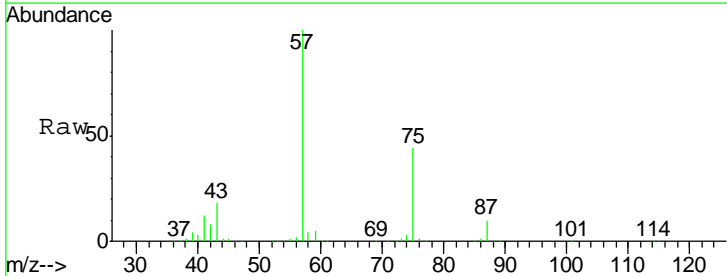
Instrument :
 MSVOA_X
ClientSampleId :
 RBR-200052

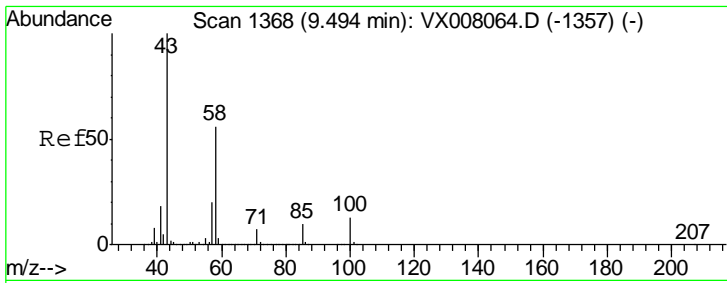
Tgt Ion	Resp	Lower	Upper
75	32651		
77	0.4	25.0	37.6#
39	23.9	36.6	54.8#



#57
 1,3-Dichloropropane
 Concen: 1.632 ug/l
 RT: 9.54 min Scan# 1376
 Delta R.T. 0.17 min
 Lab File: VX008148.D
 Acq: 16 Mar 2019 18:27

Tgt Ion	Resp	Lower	Upper
76	7542		
78	0.0	25.5	38.3#

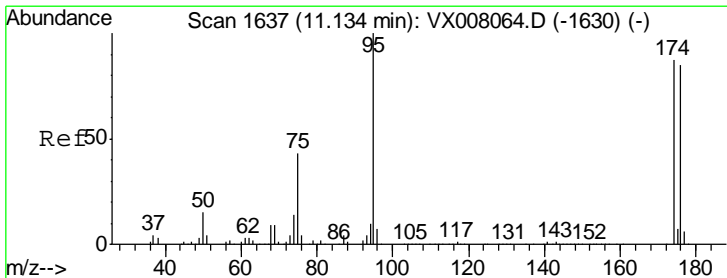
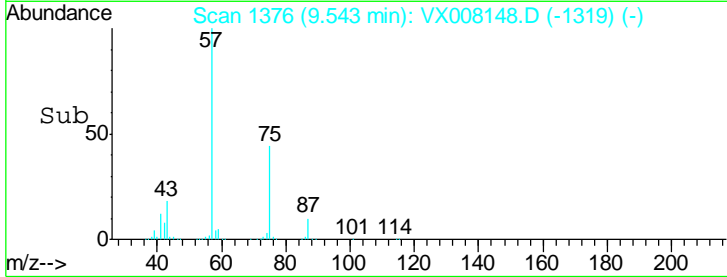
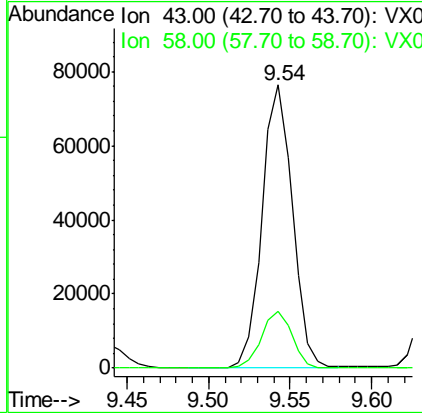
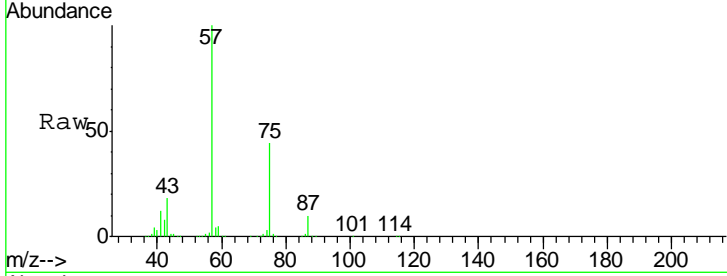




#59
 2-Hexanone
 Concen: 31.384 ug/l
 RT: 9.54 min Scan# 1376
 Delta R.T. 0.05 min
 Lab File: VX008148.D
 Acq: 16 Mar 2019 18:27

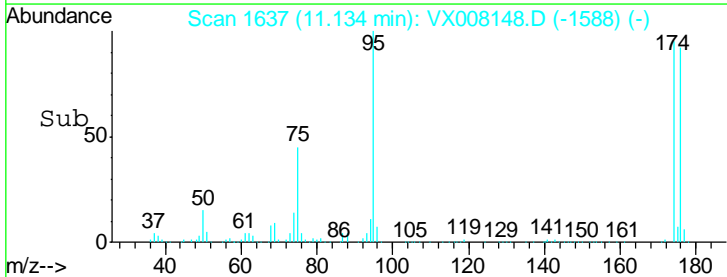
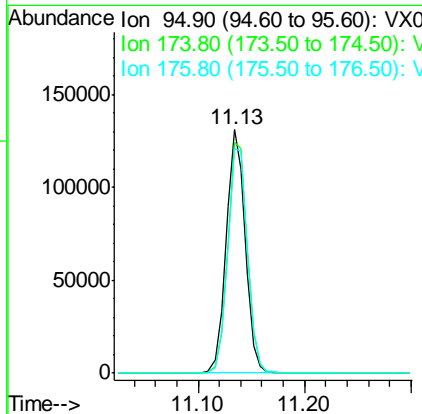
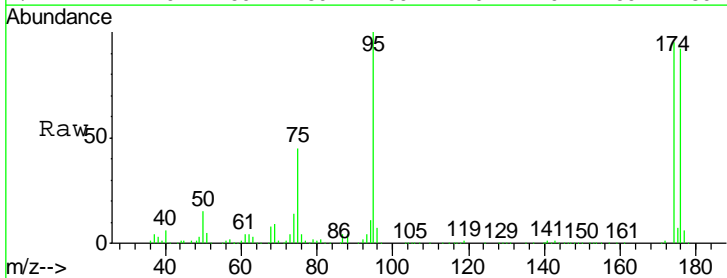
Instrument :
 MSVOA_X
 ClientSampled :
 RBR-200052

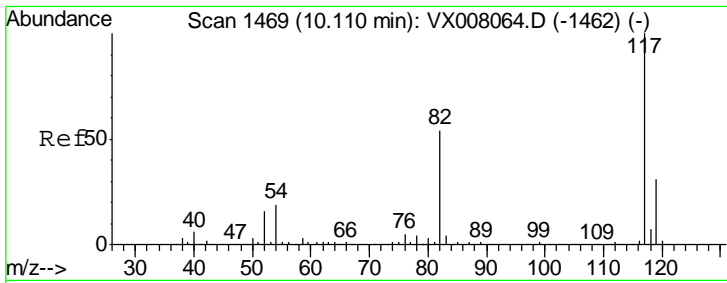
Tgt Ion: 43 Resp: 98626
 Ion Ratio Lower Upper
 43 100
 58 20.5 27.6 82.7#



#62
 4-Bromofluorobenzene
 Concen: 44.238 ug/l
 RT: 11.13 min Scan# 1637
 Delta R.T. 0.00 min
 Lab File: VX008148.D
 Acq: 16 Mar 2019 18:27

Tgt Ion: 95 Resp: 163660
 Ion Ratio Lower Upper
 95 100
 174 98.0 0.0 182.8
 176 96.2 0.0 178.0

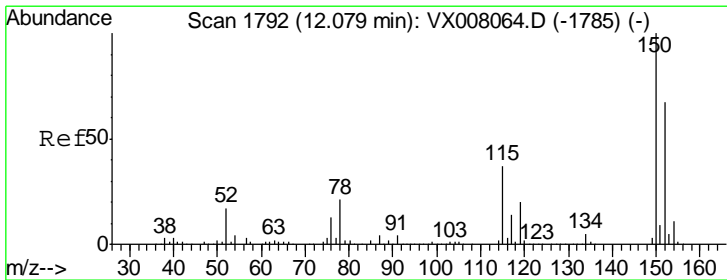
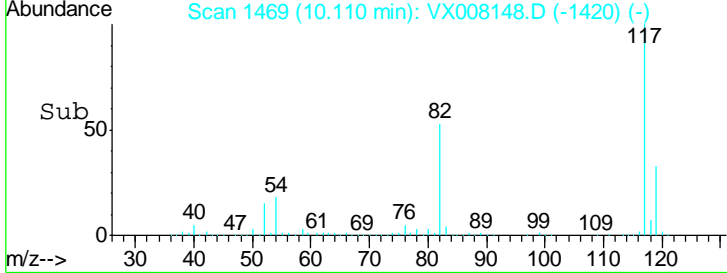
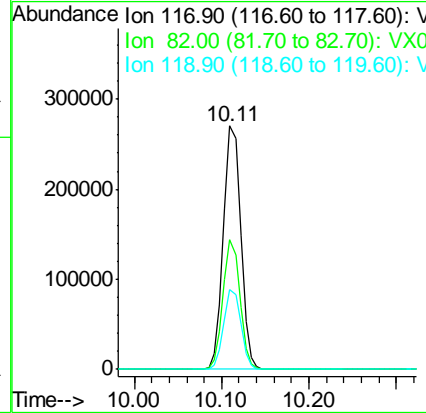
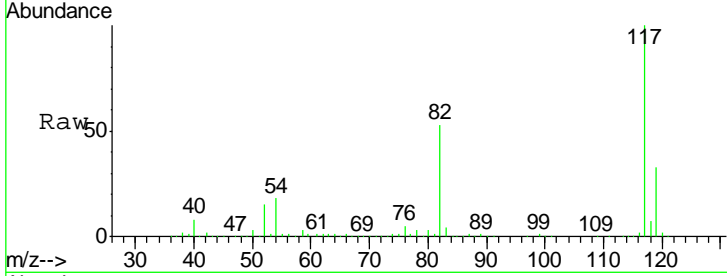




#63
 Chlorobenzene-d5
 Concen: 50.000 ug/l
 RT: 10.11 min Scan# 1469
 Delta R.T. 0.00 min
 Lab File: VX008148.D
 Acq: 16 Mar 2019 18:27

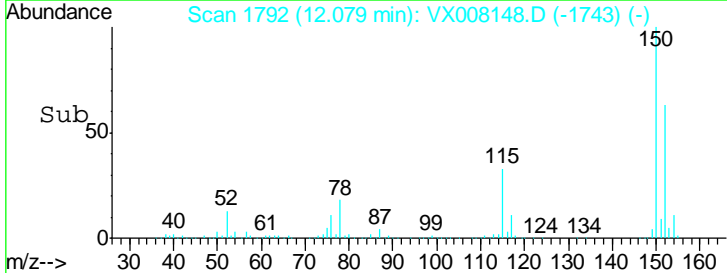
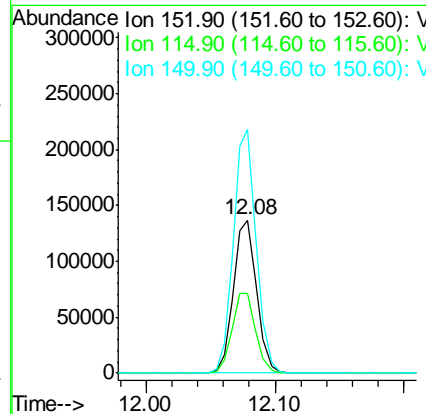
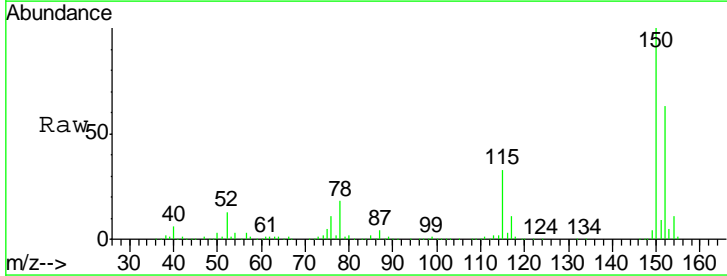
Instrument :
 MSVOA_X
 ClientSampled :
 RBR-200052

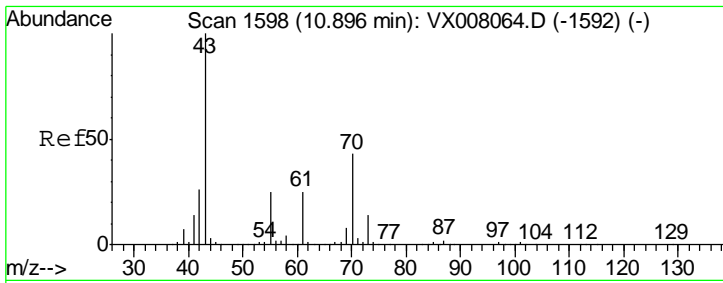
Tgt Ion	Resp	Lower	Upper
117	372793		
82	53.1	44.3	66.5
119	32.6	25.3	37.9



#72
 1,4-Dichlorobenzene-d4
 Concen: 50.000 ug/l
 RT: 12.08 min Scan# 1792
 Delta R.T. 0.00 min
 Lab File: VX008148.D
 Acq: 16 Mar 2019 18:27

Tgt Ion	Resp	Lower	Upper
152	172892		
115	53.2	38.6	115.7
150	156.9	0.0	348.4

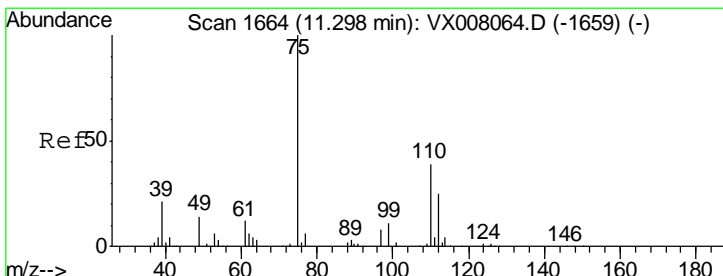
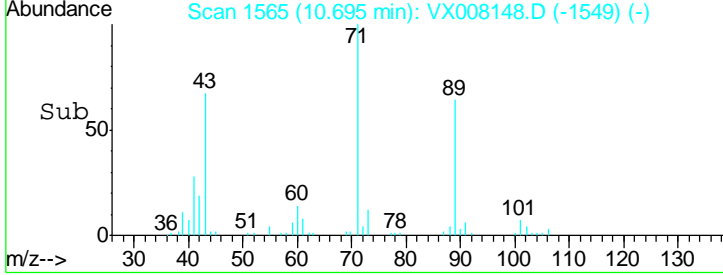
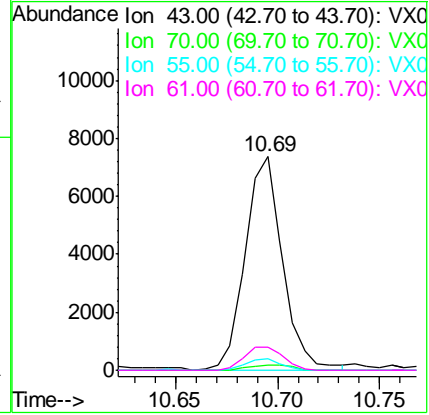
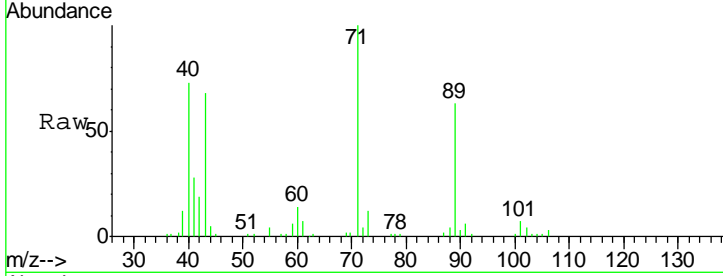




#74
 N-amyl acetate
 Concen: 2.018 ug/l
 RT: 10.69 min Scan# 1565
 Delta R.T. -0.20 min
 Lab File: VX008148.D
 Acq: 16 Mar 2019 18:27

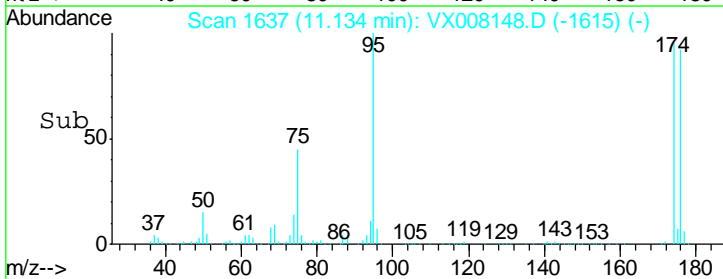
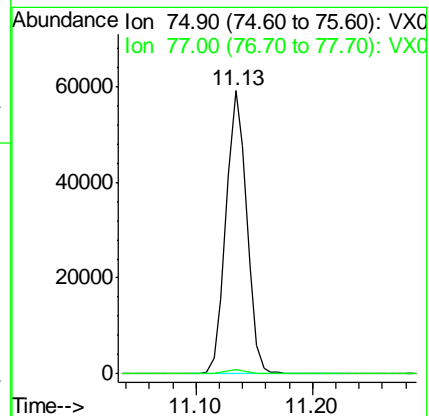
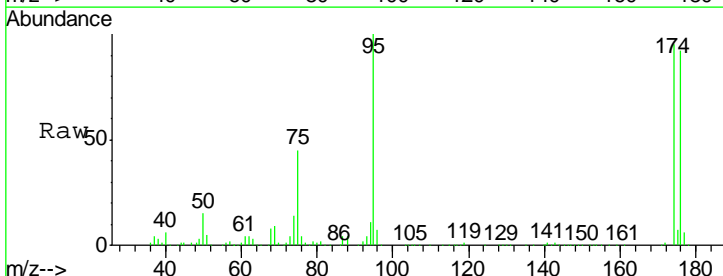
Instrument : MSVOA_X
 ClientSampled : RBR-200052

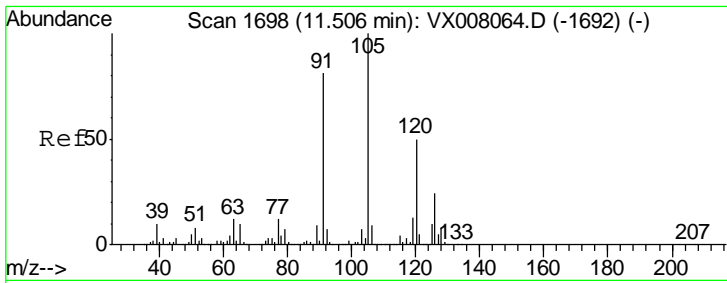
Tgt Ion	Resp	Lower	Upper
43	100		
70	2.6	33.5	50.3#
55	5.1	19.2	28.8#
61	11.5	19.0	28.6#



#76
 1,2,3-Trichloropropane
 Concen: 24.188 ug/l
 RT: 11.13 min Scan# 1637
 Delta R.T. -0.16 min
 Lab File: VX008148.D
 Acq: 16 Mar 2019 18:27

Tgt Ion	Resp	Lower	Upper
75	100		
77	1.4	18.9	56.7#

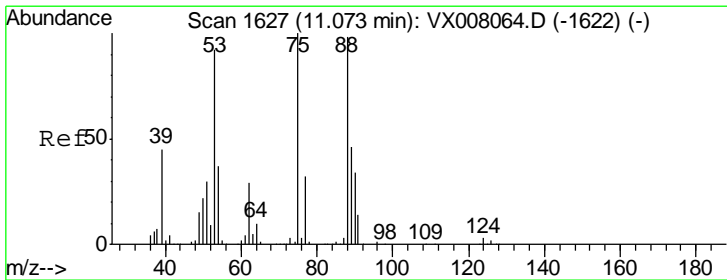
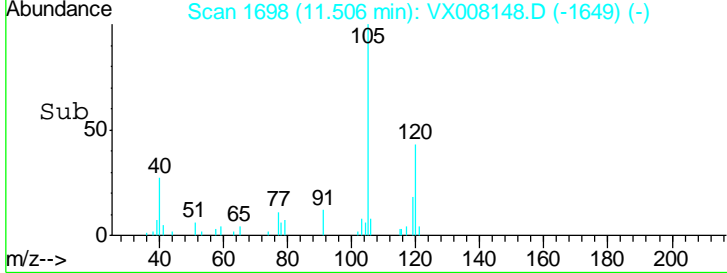
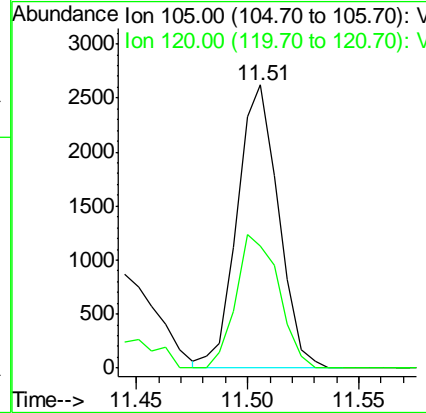
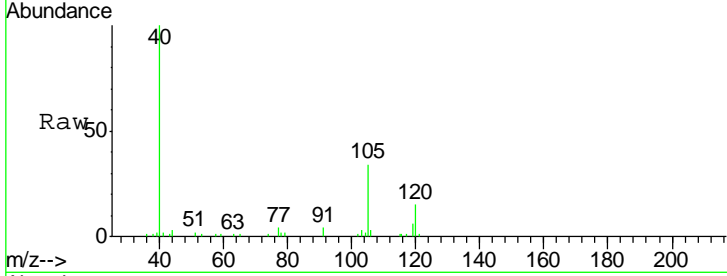




#80
 1,3,5-Trimethylbenzene
 Concen: 0.371 ug/l
 RT: 11.51 min Scan# 1698
 Delta R.T. 0.00 min
 Lab File: VX008148.D
 Acq: 16 Mar 2019 18:27

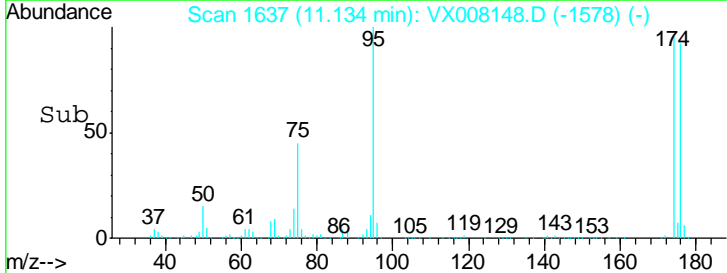
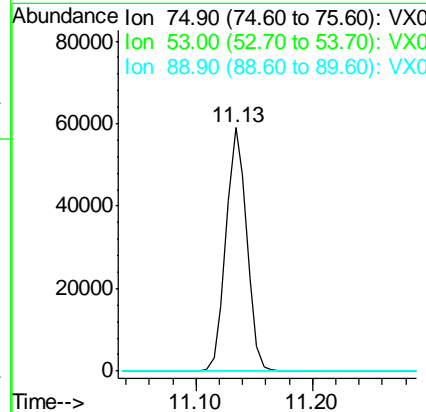
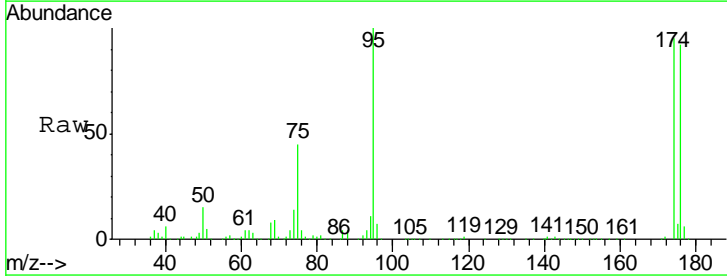
Instrument :
 MSVOA_X
 ClientSampled :
 RBR-200052

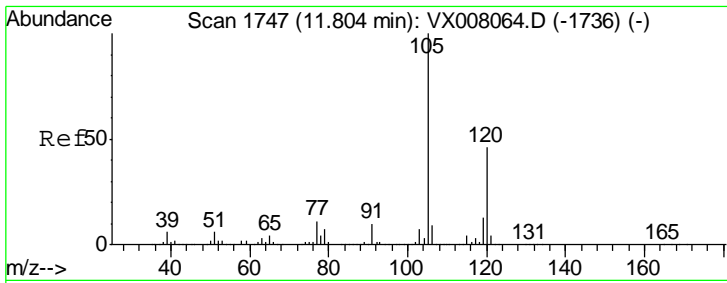
Tgt Ion: 105 Resp: 3383
 Ion Ratio Lower Upper
 105 100
 120 48.9 24.9 74.6



#81
 trans-1,4-Dichloro-2-butene
 Concen: 68.832 ug/l
 RT: 11.13 min Scan# 1637
 Delta R.T. 0.06 min
 Lab File: VX008148.D
 Acq: 16 Mar 2019 18:27

Tgt Ion: 75 Resp: 72629
 Ion Ratio Lower Upper
 75 100
 53 0.0 76.1 114.1#
 89 0.0 36.3 54.5#

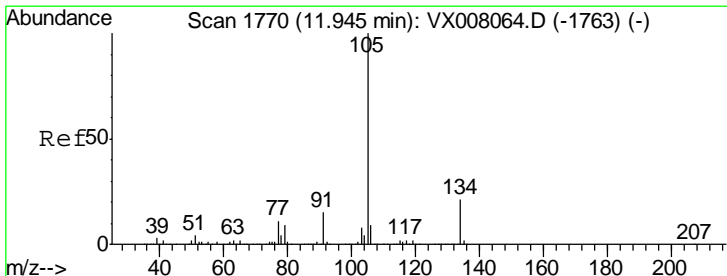
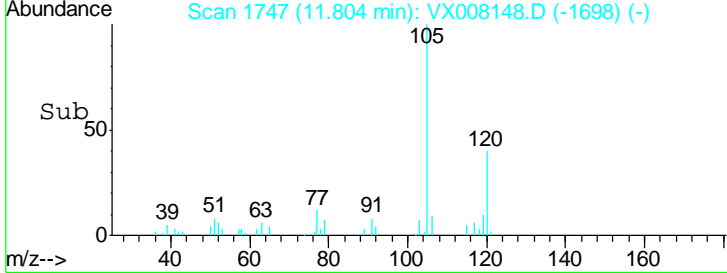
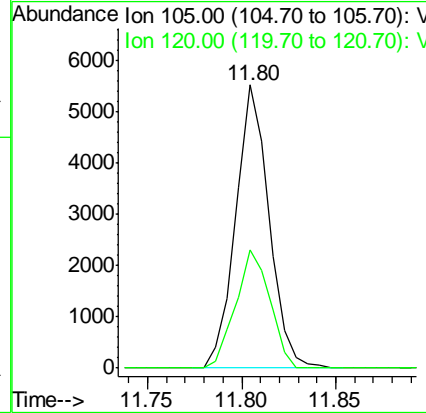
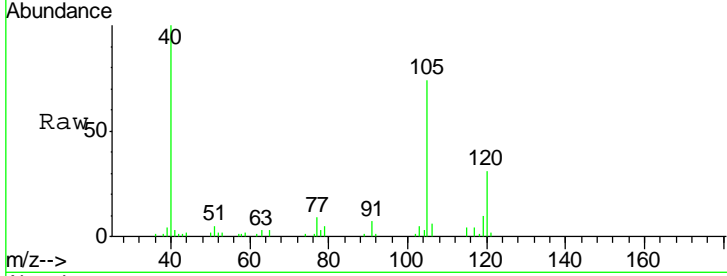




#84
 1,2,4-Trimethylbenzene
 Concen: 0.720 ug/l
 RT: 11.80 min Scan# 1747
 Delta R.T. 0.00 min
 Lab File: VX008148.D
 Acq: 16 Mar 2019 18:27

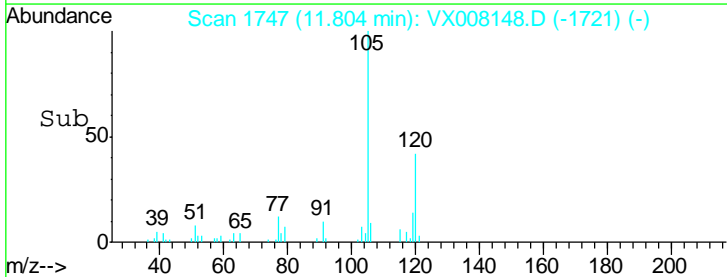
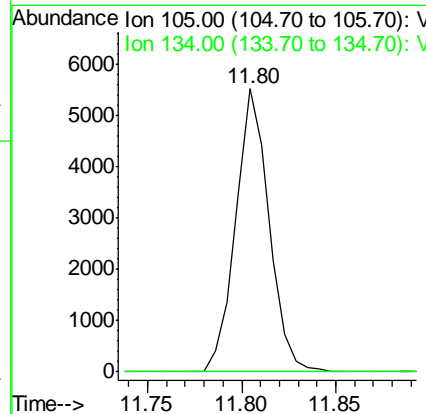
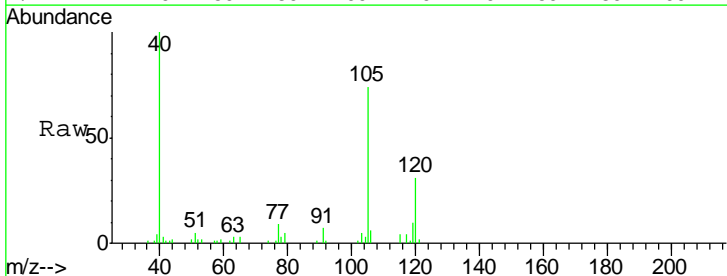
Instrument :
 MSVOA_X
 ClientSampled :
 RBR-200052

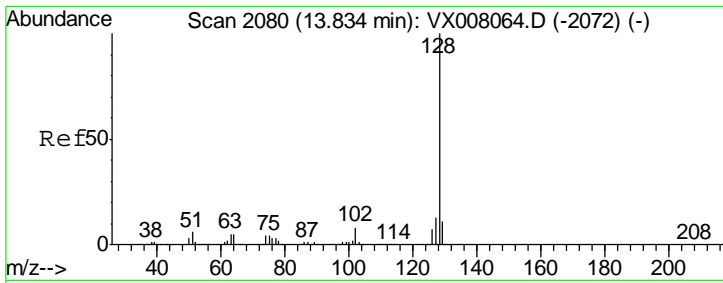
Tgt Ion:105 Resp: 6780
 Ion Ratio Lower Upper
 105 100
 120 42.8 22.6 67.7



#85
 sec-Butylbenzene
 Concen: 0.622 ug/l
 RT: 11.80 min Scan# 1747
 Delta R.T. -0.14 min
 Lab File: VX008148.D
 Acq: 16 Mar 2019 18:27

Tgt Ion:105 Resp: 6780
 Ion Ratio Lower Upper
 105 100
 134 0.0 10.4 31.2#





#95
 Naphthalene
 Concen: 1.058 ug/l
 RT: 13.83 min Scan# 2080
 Delta R.T. 0.00 min
 Lab File: VX008148.D
 Acq: 16 Mar 2019 18:27

Instrument :
 MSVOA_X
ClientSampled :
 RBR-200052

Tot Ion	128	Resp	11246
Ion	Ratio	Lower	Upper
128	100		
127	13.4	10.3	15.5
129	11.2	8.7	13.1

