

Data Path : Z:\VOASRV\HPCHEM1\MSVOA X\DATA\VX031619\
 Data File : VX008154.D
 Acq On : 16 Mar 2019 21:07
 Operator : JC/SP
 Sample : K1960-08
 Misc : 5.0mL/MSVOA X/WATER
 ALS Vial : 22 Sample Multiplier: 1

Instrument :
 MSVOA_X
 ClientSampled :
 T3-MW-7-10.0-031419

Integration Parameters: RTEINT.P

Integrator: RTE
 Smoothing : ON
 Sampling : 1
 Start Thrs: 0.2
 Stop Thrs : 0

Filtering: 5
 Min Area: 3 % of largest Peak
 Max Peaks: 100
 Peak Location: TOP

If leading or trailing edge < 100 prefer < Baseline drop else tangent >
 Peak separation: 5

Method : Z:\VOASRV\HPCHEM1\MSVOA_X\METHOD\82X031419W.M
 Title : SW846 8260

Signal : TIC

peak #	R.T. min	first scan	max scan	last scan	PK TY	peak height	corr. area	corr. % max.	% of total
1	1.794	101	105	112	rVB	15504	22537	1.80%	0.208%
2	2.446	207	212	220	rBV2	7222	13775	1.10%	0.127%
3	2.611	234	239	246	rVB	10756	20225	1.61%	0.186%
4	2.934	287	292	303	rVB2	13961	31109	2.48%	0.287%
5	3.202	324	336	346	rVB5	10815	38876	3.10%	0.358%
6	4.403	524	533	544	rVB2	19632	57981	4.62%	0.534%
7	5.305	671	681	687	rBV3	5291	15115	1.20%	0.139%
8	5.507	703	714	723	rBV	149906	429461	34.23%	3.958%
9	5.665	730	740	759	rVB	298862	838020	66.80%	7.723%
10	6.067	796	806	821	rBV	153932	398383	31.75%	3.672%
11	6.299	831	844	850	rBV6	6135	21742	1.73%	0.200%
12	6.860	926	936	946	rBV	408326	944979	75.32%	8.709%
13	7.457	1023	1034	1043	rBV5	10257	29254	2.33%	0.270%
14	8.213	1153	1158	1163	rVB3	10554	18898	1.51%	0.174%
15	8.567	1212	1216	1224	rVB2	11350	19729	1.57%	0.182%
16	8.713	1232	1240	1248	rBV	823380	1254595	100.00%	11.563%
17	10.109	1460	1469	1476	rBV	754200	1029891	82.09%	9.492%
18	10.353	1502	1509	1515	rVB3	11946	22993	1.83%	0.212%
19	10.658	1553	1559	1564	rBV5	8533	16426	1.31%	0.151%
20	10.835	1584	1588	1597	rVB3	14970	21183	1.69%	0.195%
21	11.018	1613	1618	1625	rBV	72715	97956	7.81%	0.903%
22	11.134	1632	1637	1642	rBV	633092	812392	64.75%	7.487%
23	11.182	1642	1645	1649	rVB3	11928	16919	1.35%	0.156%
24	11.359	1664	1674	1678	rBV	28586	37541	2.99%	0.346%
25	11.670	1717	1725	1731	rBV2	22004	31155	2.48%	0.287%
26	11.768	1735	1741	1745	rBV	30616	39939	3.18%	0.368%
27	11.920	1760	1766	1767	rBV	41072	53132	4.23%	0.490%
28	11.944	1767	1770	1776	rVB	63815	79392	6.33%	0.732%
29	12.079	1786	1792	1800	rBV	754460	954534	76.08%	8.797%
30	12.231	1811	1817	1821	rBV	50047	61040	4.87%	0.563%
31	12.298	1821	1828	1836	rVV	585860	720679	57.44%	6.642%
32	12.383	1836	1842	1847	rVB2	17069	29290	2.33%	0.270%
33	12.457	1849	1854	1860	rBV	72474	91326	7.28%	0.842%
34	12.664	1880	1888	1891	rBV	161083	202936	16.18%	1.870%

Data Path : Z:\VOASRV\HPCHEM1\MSVOA X\DATA\VX031619\
 Data File : VX008154.D
 Acq On : 16 Mar 2019 21:07
 Operator : JC/SP
 Sample : K1960-08
 Misc : 5.0mL/MSVOA X/WATER
 ALS Vial : 22 Sample Multiplier: 1

Instrument :
 MSVOA_X
 ClientSampleId :
 T3-MW-7-10.0-031419

Integration Parameters: RTEINT.P

Integrator: RTE
 Smoothing : ON
 Sampling : 1
 Start Thrs: 0.2
 Stop Thrs : 0

Filtering: 5
 Min Area: 3 % of largest Peak
 Max Peaks: 100
 Peak Location: TOP

If leading or trailing edge < 100 prefer < Baseline drop else tangent >
 Peak separation: 5

Method : Z:\VOASRV\HPCHEM1\MSVOA_X\METHOD\82X031419W.M
 Title : SW846 8260

35	12.700	1891	1894	1898	rVV	132662	161364	12.86%	1.487%
36	12.755	1898	1903	1910	rVV2	330963	496278	39.56%	4.574%
37	12.816	1910	1913	1917	rVB	16286	19431	1.55%	0.179%
38	12.896	1919	1926	1931	rVB	67217	91326	7.28%	0.842%
39	12.975	1931	1939	1944	rBV	290062	360751	28.75%	3.325%
40	13.085	1953	1957	1964	rBV4	19258	31342	2.50%	0.289%
41	13.145	1964	1967	1971	rBV	16786	21083	1.68%	0.194%
42	13.188	1971	1974	1977	rBV2	33007	44190	3.52%	0.407%
43	13.225	1977	1980	1989	rVB	81150	115302	9.19%	1.063%
44	13.347	1989	2000	2006	rBV2	292657	416870	33.23%	3.842%
45	13.402	2006	2009	2011	rBV2	11831	14739	1.17%	0.136%
46	13.481	2018	2022	2027	rVB2	17208	24063	1.92%	0.222%
47	13.560	2031	2035	2038	rVV2	11720	17184	1.37%	0.158%
48	13.597	2038	2041	2044	rVV	35334	47588	3.79%	0.439%
49	13.639	2044	2048	2052	rVV3	44721	68768	5.48%	0.634%
50	13.694	2052	2057	2058	rVV3	31913	45419	3.62%	0.419%
51	13.719	2058	2061	2068	rVB2	51957	79569	6.34%	0.733%
52	13.847	2078	2082	2087	rVB2	10404	16655	1.33%	0.153%
53	13.908	2088	2092	2098	rBV	21666	26605	2.12%	0.245%
54	13.981	2098	2104	2108	rVV2	27662	38964	3.11%	0.359%
55	14.023	2108	2111	2116	rVB2	10478	14180	1.13%	0.131%
56	14.133	2124	2129	2132	rBV	14861	20887	1.66%	0.193%
57	14.267	2146	2151	2158	rBV2	23630	45048	3.59%	0.415%
58	14.377	2165	2169	2174	rBV2	11813	15028	1.20%	0.139%
59	14.426	2174	2177	2183	rVB	14678	19171	1.53%	0.177%
60	14.535	2190	2195	2200	rBV2	29654	40519	3.23%	0.373%
61	14.670	2206	2217	2218	rBV4	6130	12578	1.00%	0.116%
62	14.694	2218	2221	2224	rVB2	13536	16507	1.32%	0.152%
63	14.840	2239	2245	2254	rBV2	26268	41837	3.33%	0.386%
64	15.688	2377	2384	2387	rBV4	7960	13620	1.09%	0.126%

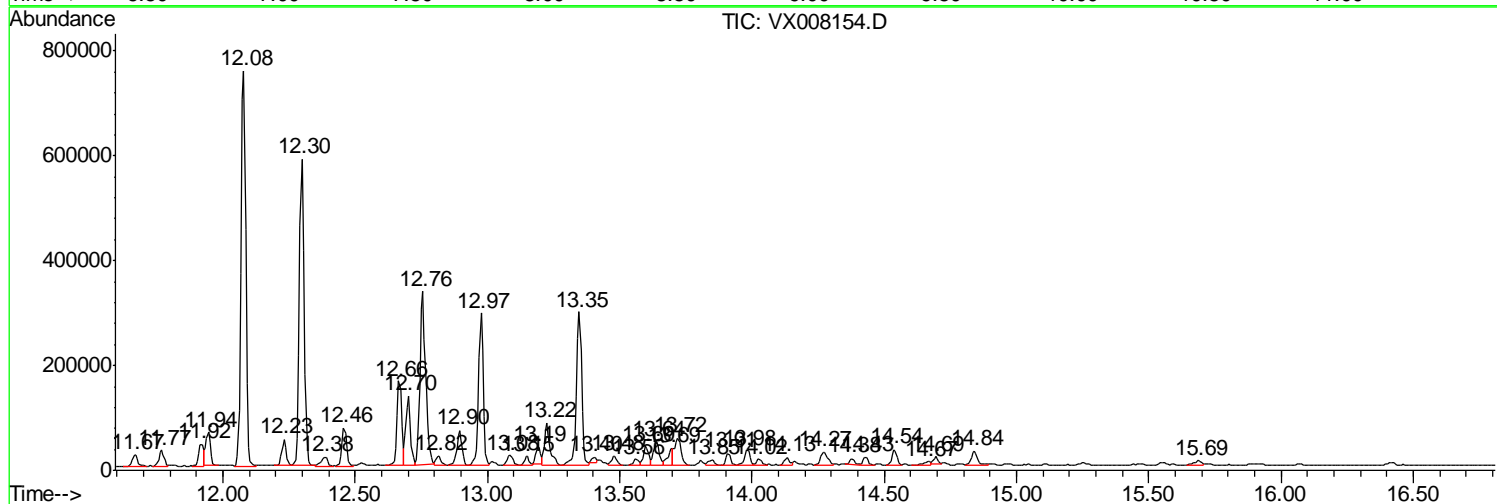
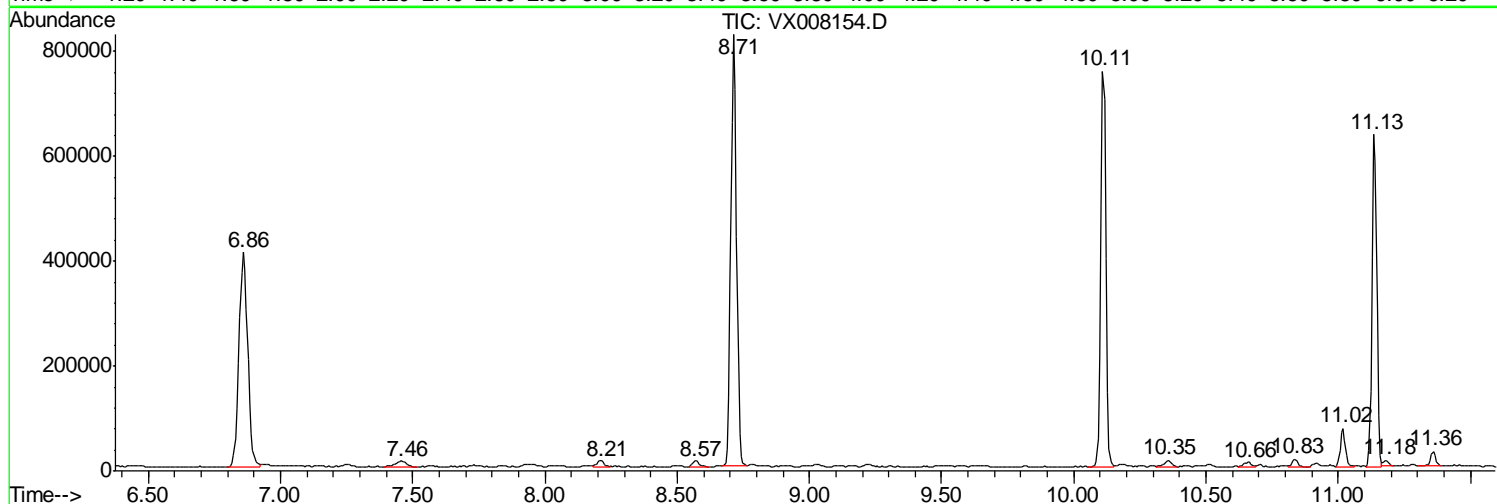
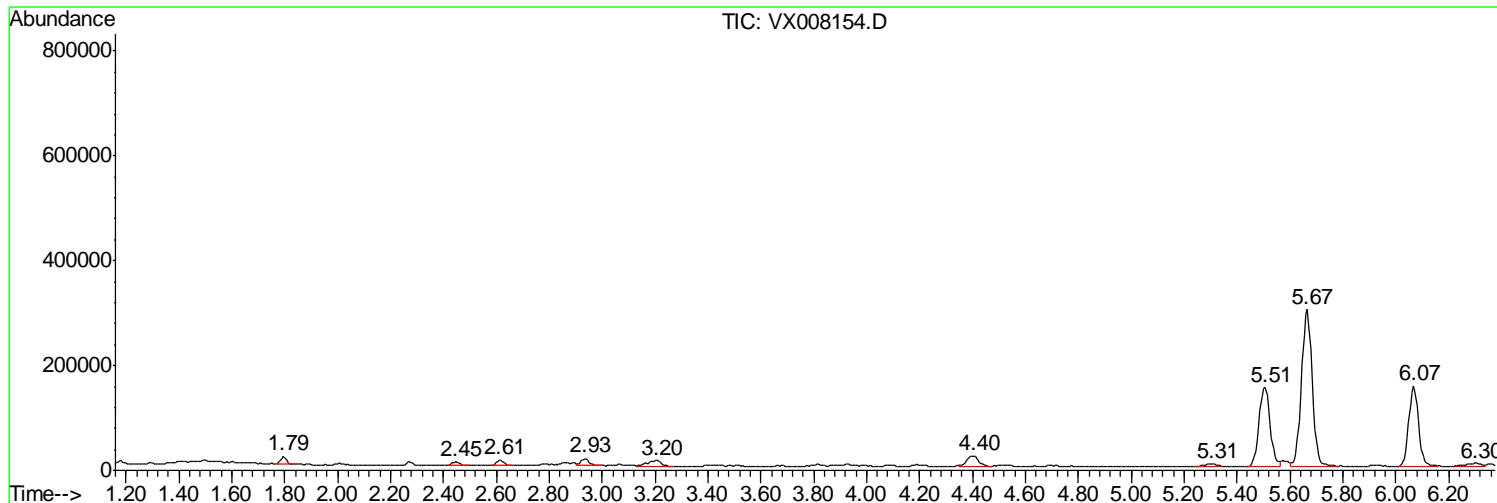
Sum of corrected areas: 10850269

Data Path : Z:\VOASRV\HPCHEM1\MSVOA X\DATA\VX031619\
 Data File : VX008154.D
 Acq On : 16 Mar 2019 21:07
 Operator : JC/SP
 Sample : K1960-08
 Misc : 5.0mL/MSVOA X/WATER
 ALS Vial : 22 Sample Multiplier: 1

Instrument :
 MSVOA_X
ClientSampled :
 T3-MW-7-10.0-031419

Quant Method : Z:\VOASRV\HPCHEM1\MSVOA_X\METHOD\82X031419W.M
 Quant Title : SW846 8260

TIC Library : C:\DATABASE\NIST11.L
 TIC Integration Parameters: LSCINT.P



Data Path : Z:\VOASRV\HPCHEM1\MSVOA X\DATA\VX031619\
 Data File : VX008154.D
 Acq On : 16 Mar 2019 21:07
 Operator : JC/SP
 Sample : K1960-08
 Misc : 5.0mL/MSVOA X/WATER
 ALS Vial : 22 Sample Multiplier: 1

Instrument :
 MSVOA_X
 ClientSampleID :
 T3-MW-7-10.0-031419

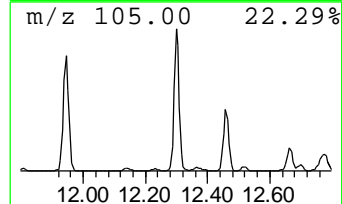
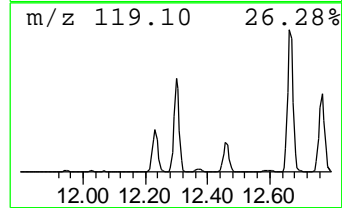
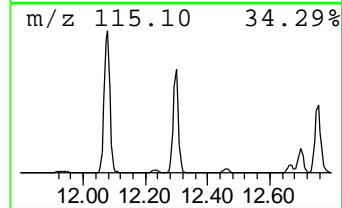
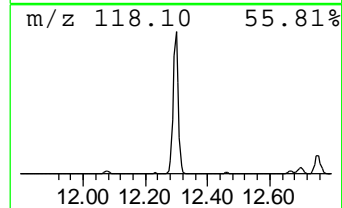
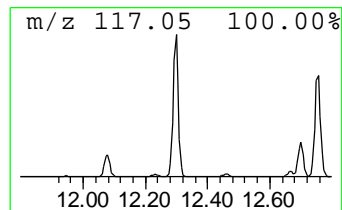
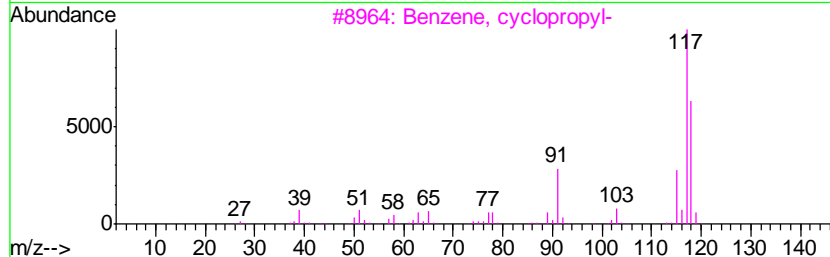
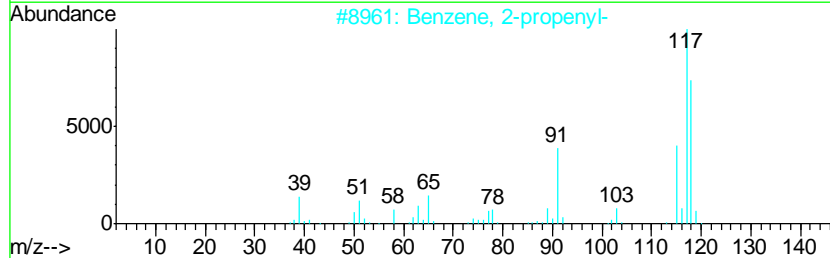
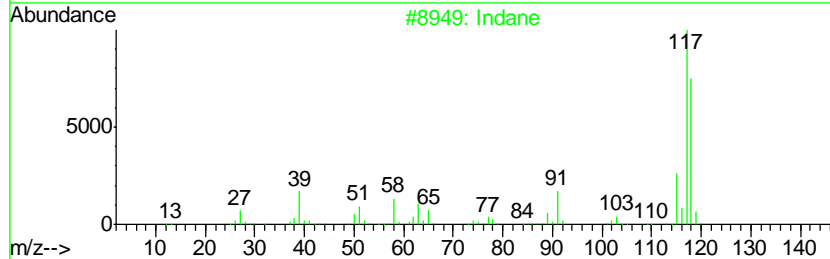
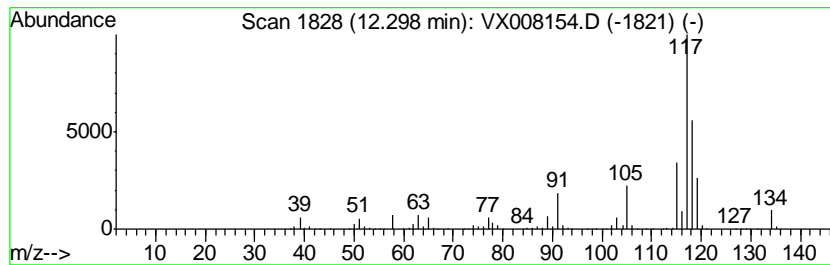
Quant Method : Z:\VOASRV\HPCHEM1\MSVOA_X\METHOD\82X031419W.M
 Quant Title : SW846 8260

TIC Library : C:\DATABASE\NIST11.L
 TIC Integration Parameters: LSCINT.P

 Peak Number 1 Indane Concentration Rank 1

R.T.	EstConc	Area	Relative to ISTD	R.T.
12.30	37.75 ug/l	720679	1,4-Dichlorobenzene-d4	12.08

Hit#	of	Tentative ID	MW	MolForm	CAS#	Qual
1	5	Indane	118	C9H10	000496-11-7	70
2		Benzene, 2-propenyl-	118	C9H10	000300-57-2	70
3		Benzene, cyclopropyl-	118	C9H10	000873-49-4	70
4		Benzene, 1-propenyl-	118	C9H10	000637-50-3	62
5		Deltacyclene	118	C9H10	007785-10-6	52



Data Path : Z:\VOASRV\HPCHEM1\MSVOA X\DATA\VX031619\
 Data File : VX008154.D
 Acq On : 16 Mar 2019 21:07
 Operator : JC/SP
 Sample : K1960-08
 Misc : 5.0mL/MSVOA X/WATER
 ALS Vial : 22 Sample Multiplier: 1

Instrument :
 MSVOA_X
 ClientSampleID :
 T3-MW-7-10.0-031419

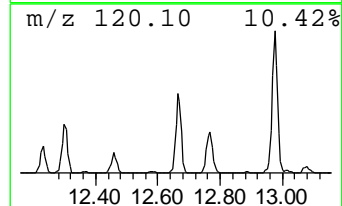
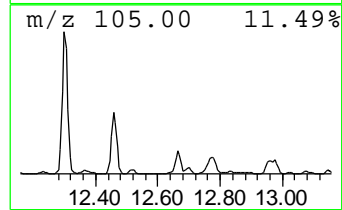
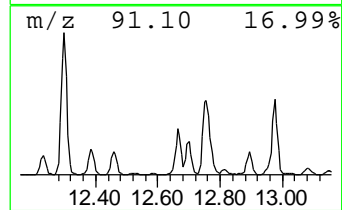
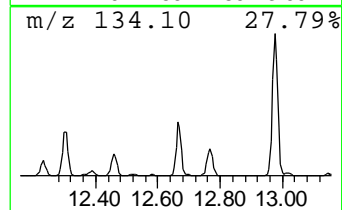
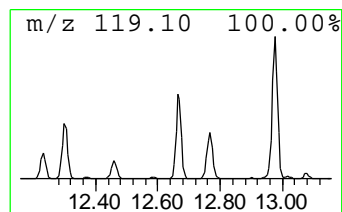
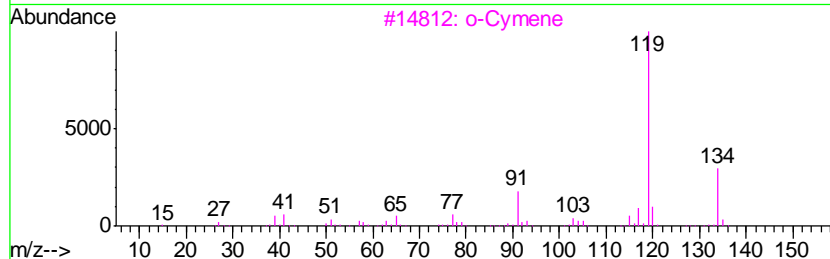
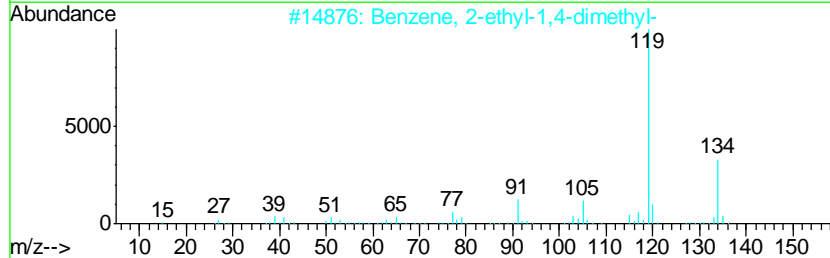
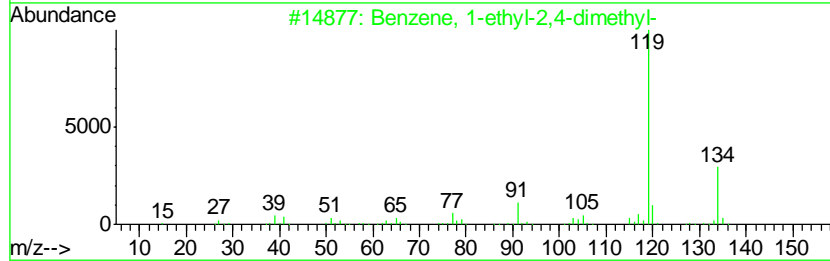
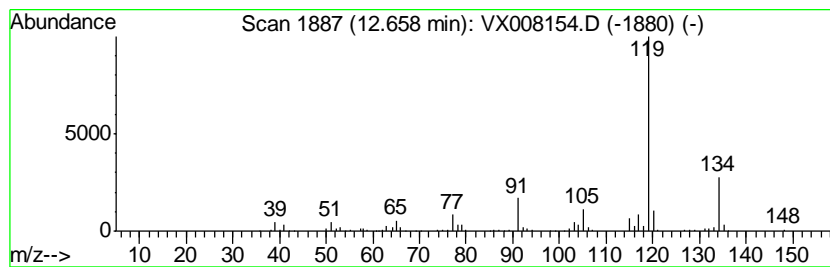
Quant Method : Z:\VOASRV\HPCHEM1\MSVOA_X\METHOD\82X031419W.M
 Quant Title : SW846 8260

TIC Library : C:\DATABASE\NIST11.L
 TIC Integration Parameters: LSCINT.P

 Peak Number 2 Benzene, 1-ethyl-2,4-dimethyl- Concentration Rank 5

R.T.	EstConc	Area	Relative to ISTD	R.T.
12.66	10.63 ug/l	202936	1,4-Dichlorobenzene-d4	12.08

Hit#	of	Tentative ID	MW	MolForm	CAS#	Qual
1	5	Benzene, 1-ethyl-2,4-dimethyl-	134	C10H14	000874-41-9	97
2		Benzene, 2-ethyl-1,4-dimethyl-	134	C10H14	001758-88-9	97
3		o-Cymene	134	C10H14	000527-84-4	95
4		Benzene, 4-ethyl-1,2-dimethyl-	134	C10H14	000934-80-5	95
5		Benzene, 2-ethyl-1,3-dimethyl-	134	C10H14	002870-04-4	95



Data Path : Z:\VOASRV\HPCHEM1\MSVOA X\DATA\VX031619\
 Data File : VX008154.D
 Acq On : 16 Mar 2019 21:07
 Operator : JC/SP
 Sample : K1960-08
 Misc : 5.0mL/MSVOA X/WATER
 ALS Vial : 22 Sample Multiplier: 1

Instrument :
 MSVOA_X
 ClientSampled :
 T3-MW-7-10.0-031419

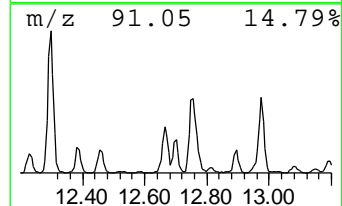
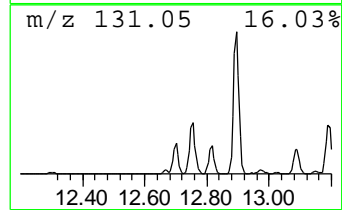
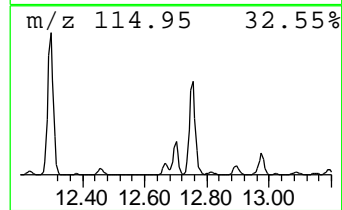
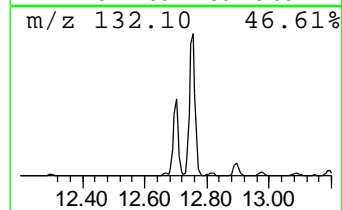
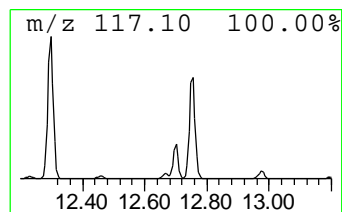
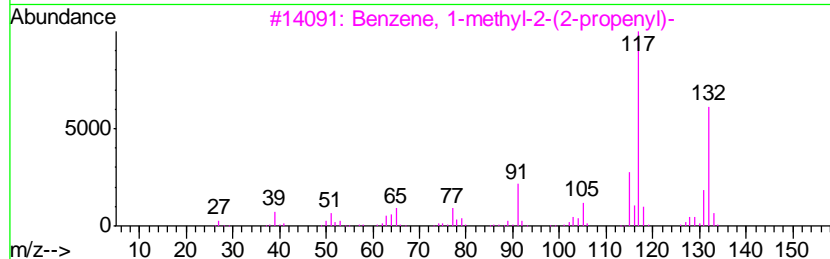
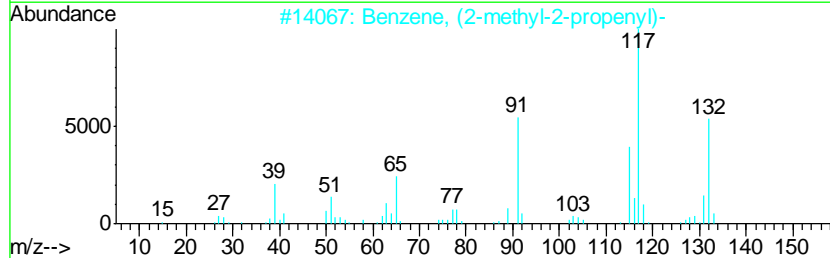
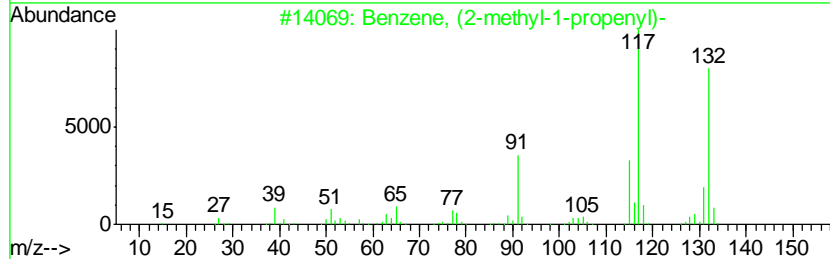
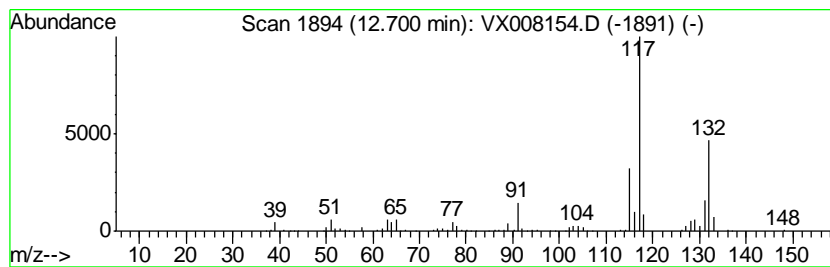
Quant Method : Z:\VOASRV\HPCHEM1\MSVOA_X\METHOD\82X031419W.M
 Quant Title : SW846 8260

TIC Library : C:\DATABASE\NIST11.L
 TIC Integration Parameters: LSCINT.P

 Peak Number 3 Benzene, (2-methyl-1-propenyl) Concentration Rank 6

R.T.	EstConc	Area	Relative to ISTD	R.T.
12.70	8.45 ug/l	161364	1,4-Dichlorobenzene-d4	12.08

Hit#	of	Tentative ID	MW	MolForm	CAS#	Qual
1	5	Benzene, (2-methyl-1-propenyl)-	132	C10H12	000768-49-0	91
2		Benzene, (2-methyl-2-propenyl)-	132	C10H12	003290-53-7	90
3		Benzene, 1-methyl-2-(2-propenyl)-	132	C10H12	001587-04-8	90
4		Indan, 1-methyl-	132	C10H12	000767-58-8	90
5		Benzene, (1-methyl-1-propenyl)-,...	132	C10H12	000768-00-3	90



Data Path : Z:\VOASRV\HPCHEM1\MSVOA X\DATA\VX031619\
 Data File : VX008154.D
 Acq On : 16 Mar 2019 21:07
 Operator : JC/SP
 Sample : K1960-08
 Misc : 5.0mL/MSVOA X/WATER
 ALS Vial : 22 Sample Multiplier: 1

Instrument :
 MSVOA_X
 ClientSampleID :
 T3-MW-7-10.0-031419

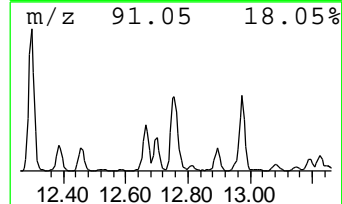
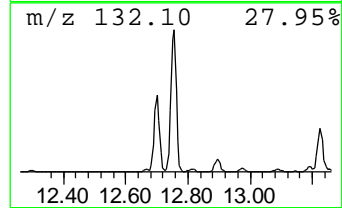
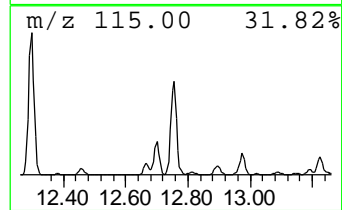
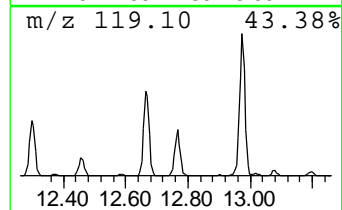
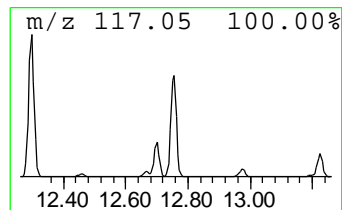
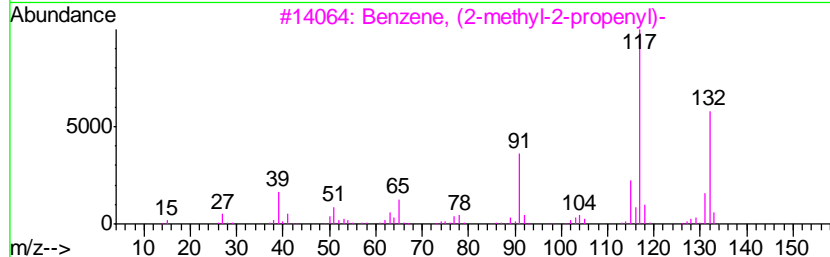
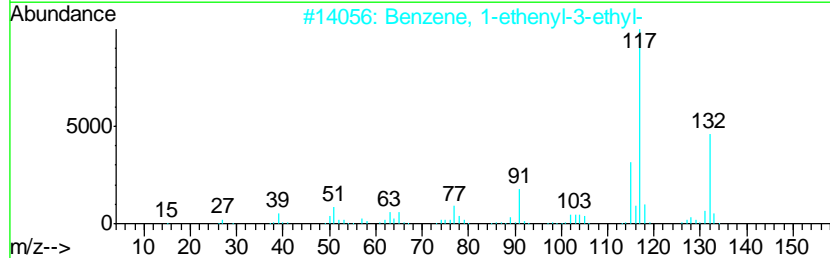
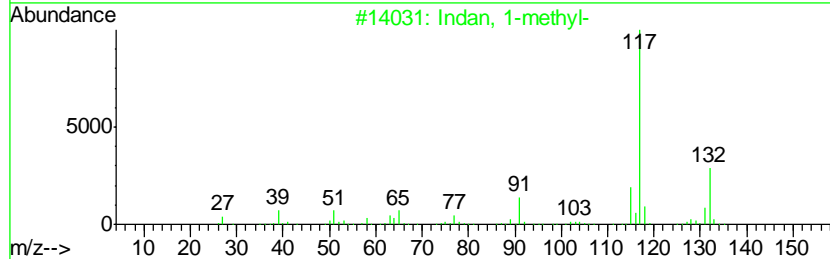
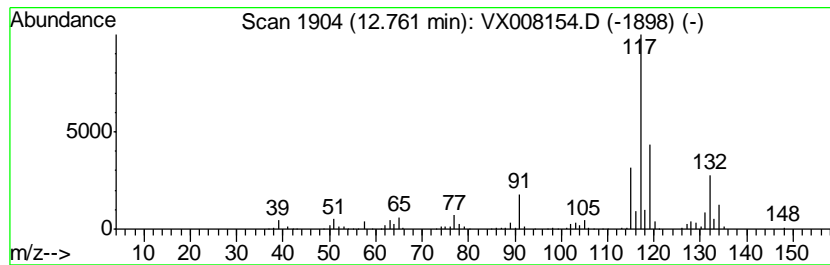
Quant Method : Z:\VOASRV\HPCHEM1\MSVOA_X\METHOD\82X031419W.M
 Quant Title : SW846 8260

TIC Library : C:\DATABASE\NIST11.L
 TIC Integration Parameters: LSCINT.P

 Peak Number 4 Indan, 1-methyl- Concentration Rank 2

R.T.	EstConc	Area	Relative to ISTD	R.T.
12.76	26.00 ug/l	496278	1,4-Dichlorobenzene-d4	12.08

Hit#	of	Tentative ID	MW	MolForm	CAS#	Qual
1	5	Indan, 1-methyl-	132	C10H12	000767-58-8	93
2		Benzene, 1-ethenyl-3-ethyl-	132	C10H12	007525-62-4	87
3		Benzene, (2-methyl-2-propenyl)-	132	C10H12	003290-53-7	86
4		1-Phenyl-1-butene	132	C10H12	000824-90-8	83
5		Benzene, (2-methylcyclopropyl)-	132	C10H12	1000327-39-0	81



Data Path : Z:\VOASRV\HPCHEM1\MSVOA X\DATA\VX031619\
 Data File : VX008154.D
 Acq On : 16 Mar 2019 21:07
 Operator : JC/SP
 Sample : K1960-08
 Misc : 5.0mL/MSVOA X/WATER
 ALS Vial : 22 Sample Multiplier: 1

Instrument :
 MSVOA_X
 ClientSampleID :
 T3-MW-7-10.0-031419

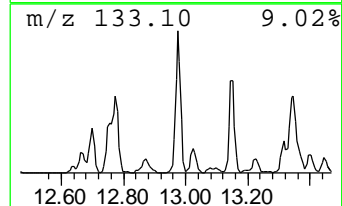
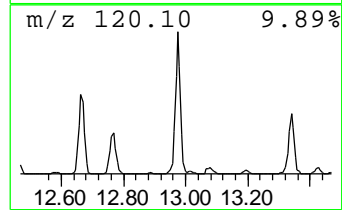
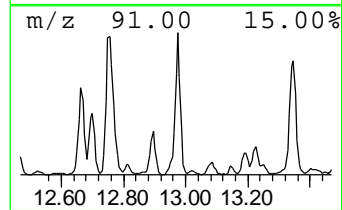
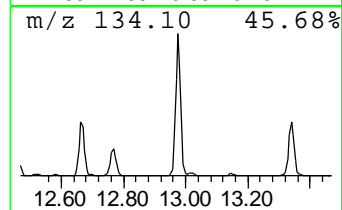
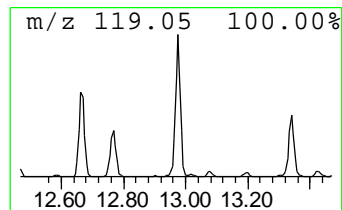
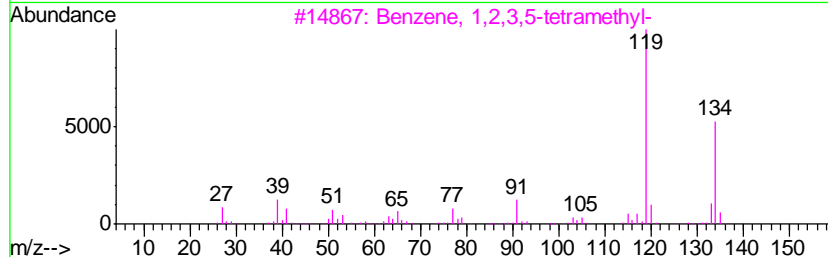
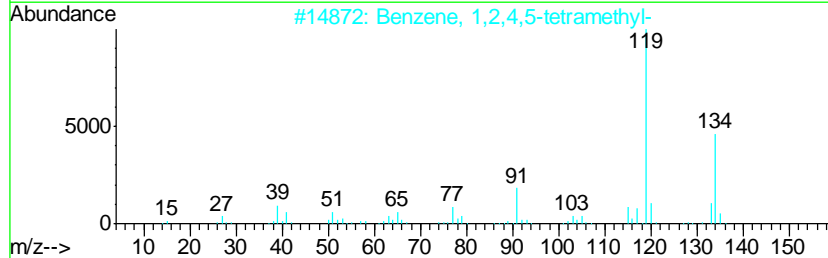
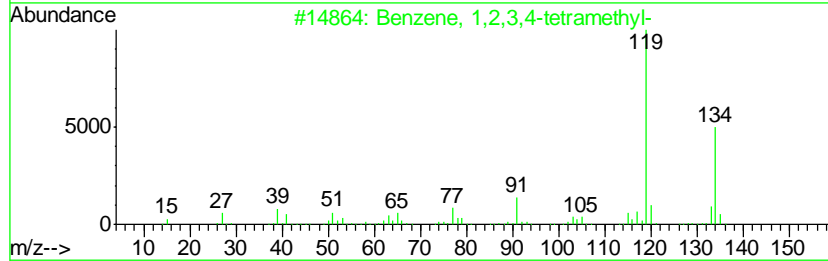
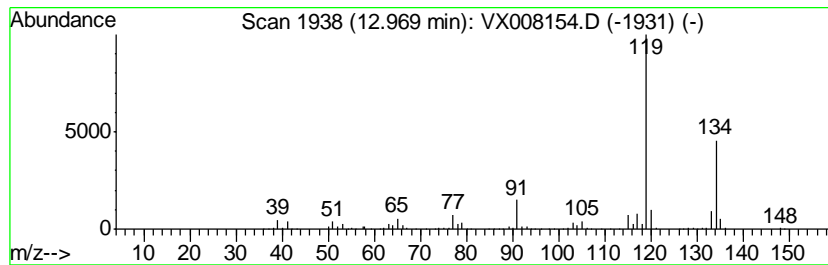
Quant Method : Z:\VOASRV\HPCHEM1\MSVOA_X\METHOD\82X031419W.M
 Quant Title : SW846 8260

TIC Library : C:\DATABASE\NIST11.L
 TIC Integration Parameters: LSCINT.P

 Peak Number 5 Benzene, 1,2,3,4-tetramethyl- Concentration Rank 4

R.T.	EstConc	Area	Relative to ISTD	R.T.
12.97	18.90 ug/l	360751	1,4-Dichlorobenzene-d4	12.08

Hit#	of	Tentative ID	MW	MolForm	CAS#	Qual
1	5	Benzene, 1,2,3,4-tetramethyl-	134	C10H14	000488-23-3	97
2		Benzene, 1,2,4,5-tetramethyl-	134	C10H14	000095-93-2	97
3		Benzene, 1,2,3,5-tetramethyl-	134	C10H14	000527-53-7	97
4		o-Cymene	134	C10H14	000527-84-4	96
5		Benzene, 2-ethyl-1,3-dimethyl-	134	C10H14	002870-04-4	94



Data Path : Z:\VOASRV\HPCHEM1\MSVOA X\DATA\VX031619\
 Data File : VX008154.D
 Acq On : 16 Mar 2019 21:07
 Operator : JC/SP
 Sample : K1960-08
 Misc : 5.0mL/MSVOA X/WATER
 ALS Vial : 22 Sample Multiplier: 1

Instrument :
 MSVOA_X
 ClientSampleID :
 T3-MW-7-10.0-031419

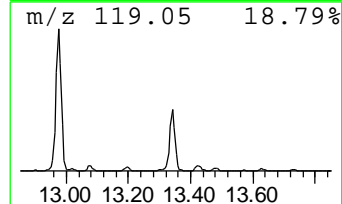
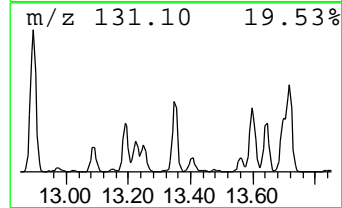
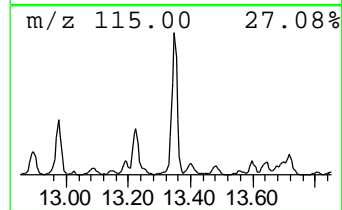
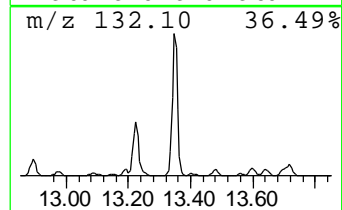
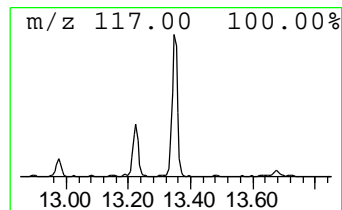
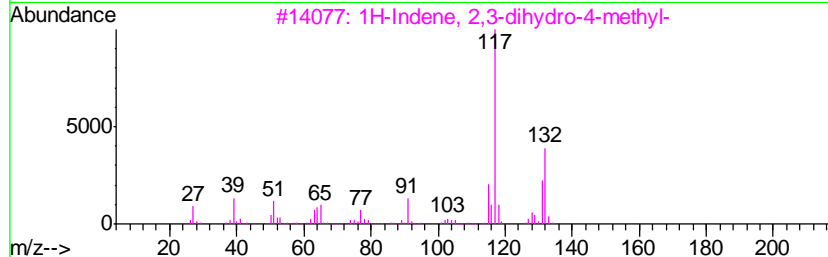
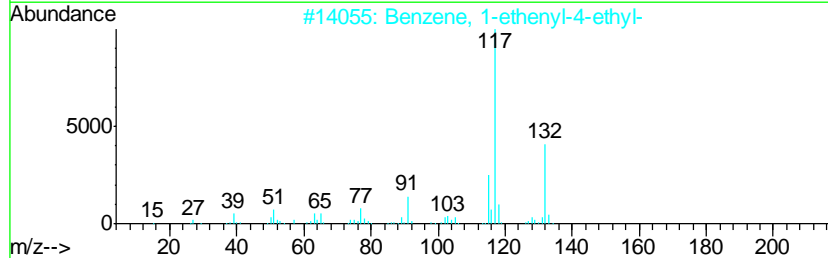
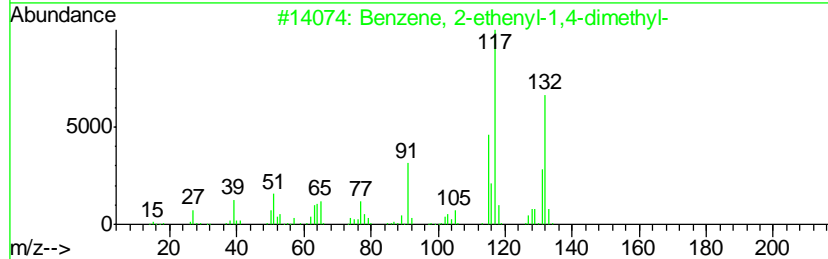
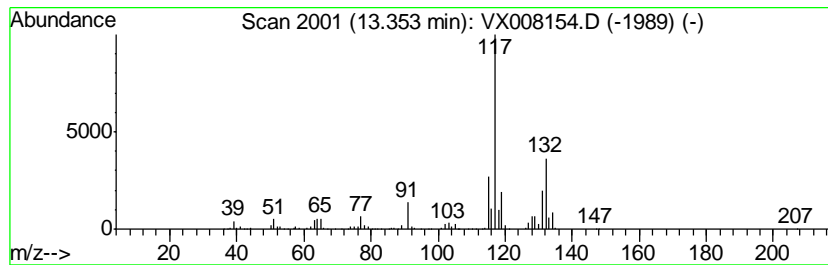
Quant Method : Z:\VOASRV\HPCHEM1\MSVOA_X\METHOD\82X031419W.M
 Quant Title : SW846 8260

TIC Library : C:\DATABASE\NIST11.L
 TIC Integration Parameters: LSCINT.P

 Peak Number 7 Benzene, 2-ethenyl-1,4-dime... Concentration Rank 3

R.T.	EstConc	Area	Relative to ISTD	R.T.
13.35	21.84 ug/l	416870	1,4-Dichlorobenzene-d4	12.08

Hit#	of	Tentative ID	MW	MolForm	CAS#	Qual
1	5	Benzene, 2-ethenyl-1,4-dimethyl-	132	C10H12	002039-89-6	95
2		Benzene, 1-ethenyl-4-ethyl-	132	C10H12	003454-07-7	83
3		1H-Indene, 2,3-dihydro-4-methyl-	132	C10H12	000824-22-6	70
4		1H-Indene, 2,3-dihydro-5-methyl-	132	C10H12	000874-35-1	64
5		Benzene, 2-butenyl-	132	C10H12	001560-06-1	64



Data Path : Z:\VOASRV\HPCHEM1\MSVOA_X\DATA\VX031619\
Data File : VX008154.D
Acq On : 16 Mar 2019 21:07
Operator : JC/SP
Sample : K1960-08
Misc : 5.0mL/MSVOA_X/WATER
ALS Vial : 22 Sample Multiplier: 1

Instrument :
MSVOA_X
ClientSampleId :
T3-MW-7-10.0-031419

Quant Method : Z:\VOASRV\HPCHEM1\MSVOA_X\METHOD\82X031419W.M
Quant Title : SW846 8260

TIC Library : C:\DATABASE\NIST11.L
TIC Integration Parameters: LSCINT.P

TIC Top Hit name	RT	EstConc	Units	Response	--Internal Standard--			
					#	RT	Resp	Conc
Indane	12.30	37.8	ug/l	720679	4	12.08	954534	50.0
Benzene, 1-ethyl-...	12.66	10.6	ug/l	202936	4	12.08	954534	50.0
Benzene, (2-methy...	12.70	8.4	ug/l	161364	4	12.08	954534	50.0
Indan, 1-methyl-	12.76	26.0	ug/l	496278	4	12.08	954534	50.0
Benzene, 1,2,3,4-...	12.97	18.9	ug/l	360751	4	12.08	954534	50.0
Benzene, 2-etheny...	13.35	21.8	ug/l	416870	4	12.08	954534	50.0